

House Testimony

From: Cris South [cris@somoor.com]
Sent: Thursday, October 25, 2007 9:27 AM
To: House Record
Subject: Superferry

Aloha, all of our elected officials...

Thank you for this opportunity to express our opinions for your consideration. At the Maui hearing, the audience was so heavily inflated by the anti-ferry group and they were so incredibly intimidating to those of us who support the ferry that many "pros" chose not to speak out of fear. Since this is a relatively small island, that fear is very real.

I am speaking for myself and my partner. We have a small jam and jelly business here on Maui, using local fruit only and as many Hawaiian ingredients as we possibly can. We strive to honor this land where we have found so much love and acceptance. My partner's mother has lived here for almost 35 years and we moved here 7 1/2 years ago to be with - take care of - her. We are registered and active voters. We take keen interest in what happens in our adopted state.

We are in favor of the superferry sailing while the EIS or EA are done. As a small business, trying to grow is very difficult. There are shows on Oahu and Big Island where we could display and sell our products that we would like to attend but logistics are hard. We were prepared to go over to Oahu today on the ferry, to drive our loaded van on board and have the simplicity of simply driving off when we reached Honolulu. It would have been so easy and we could have taken much more product with us. But instead, Judge Cardoza ruled to keep the ferry at dock and we had to change everything. Because we had to ship our stuff by Young Brothers, we missed several days of production that may potentially cost us a couple of thousand dollars. We could have arrived the day before the show but we had to ship our stuff 5 days before the show.

Many people talk about speaking for the people, for the residents, for Maui, for Hawaii. They blow up giant whales and dolphins and wave signs by the side of the road. I am, too, an environmentalist. I believe in recycling and so on. But I don't live in a gated community as many of these folks do. We work long days and live from account payment to account payment. We bought an older house in an established neighborhood. We don't want to close the door to more people moving here but we do want to stop the wild growth, the gated communities and irresponsible politics of allowing tourism to dictate life on our island. We do not have the time to wave signs, attend meetings and plan strategies. I was on the list to speak at the Maui hearing but could not wait for 5 hours to do so. We have a business to run and an elderly mother who has needs.

But we cannot go backwards. As much as we believe in the EIS or EA as good things, we are also very realistic about the true offenders of the environment here. The rhetoric of the people who testified here was all about respecting Cardoza's ruling. But I would point out that the very people who were insisting we not change anything and that Cardoza's ruling was law are the same people who took his former ruling - with which they did not agree because it would allow the ferry to sail - to the state Supreme Court. These same people talked about how people would come here, clog the roads, speed on the way to Hana. They admitted that they speed but said they were careful. They seemed very hypocritical to us.

I know it's strange to contemplate changing an existing law for this business. But I ask you to see this as applying that law fairly. All of our invasive species have come here aboard Matson, imported cars from the mainland, Young Brothers, airlines, the cruise ships and boats. If we are so in favor of preservation of the ocean, pass legislation to stop all ship and boats from dumping human waste in the ocean, at any distance from shore. Have you ever gone swimming and found yourself surrounded by feces in the water? Happens all the time in Kihei.

If the ferry should stop, then they all should stop while we consider the environmental impact of living in the 21st century. We can't go back. We can be better about smart growth. And our government could do something that helps little people like us, struggling business that already find existence in Hawaii very difficult because of high prices and so on.

Let the ferry sail. Please. Residents of Oahu are not the only ones who support it. Know that there are many, many silenced and intimidated voices on Maui and the other islands. Take our wants and needs also into your consideration. Mahaol nui loa.

10/25/2007

Cris South and Barbara Mooradian
SoMoor (LLC)
Maui Tropical Jams, Jellies & "Moor"
808-573-7524
www.somoor.com
'Put some Maui in your mouth, you'll want SoMoor!'

House Testimony

From: Cathy [cvaldez@activities4less.com]
Sent: Thursday, October 25, 2007 8:12 AM
To: House Record

ATTN: House Committee on Transportation and House Committee on Finance

DATE: Thursday, October 25, 2007

TIME: 9:00 a.m. Auditorium, State Capitol

HB 1 RELATING TO TRANSPORTATION

Requires the Department of Transportation to perform an environmental impact statement (EIS) for certain improvements made to commercial harbors. Permits operation of large capacity ferry vessel company prior to completion of EIS upon meeting certain minimum conditions. Establishes a temporary Hawaii Inter-island Ferry Oversight Task Force.

Dear Chairs Souki and Oshiro:

My name is Cathleen Valdez and I strongly support Hawaii Superferry.

We need alternative means of transportation.

Cathleen Valdez
124 Ipukula Way
Lahaina HI 96761
808-661-8238

House Testimony

From: Stacie Anderson [kilas808@gmail.com]
Sent: Thursday, October 25, 2007 9:18 AM
To: House Record
Subject: HB 1 RELATING TO TRANSPORTATION

ATTN: House Committee on Transportation and House Committee on Finance

DATE: Thursday, October 25, 2007

TIME: 9:00 a.m. Auditorium, State Capitol

HB 1 RELATING TO TRANSPORTATION

Requires the Department of Transportation to perform an environmental impact statement (EIS) for certain improvements made to commercial harbors. Permits operation of large capacity ferry vessel company prior to completion of EIS upon meeting certain minimum conditions. Establishes a temporary Hawaii Inter-island Ferry Oversight Task Force.

Dear Chairs Souki and Oshiro:

My name is Stacie Noelani Lee Anderson and I strongly support Hawaii Superferry.

The Superferry will be great for our economy as it is another means of transportation. Not only for vacationers but also for business'. I understand that tests need to be run in order to protect our marine life. However, it was understood that the Superferry would be available for the people, so why not let the Superferry run without interruption, and have the tests taken at the same time. Everyone can be satisfied so long as we all work together.

SAnderson

PO Box 970845 Waipahu HI 96797

(808) 4781001

10/25/2007

House Testimony

From: Na Lei - Resident Manager [nalei@hawaii.rr.com]
Sent: Thursday, October 25, 2007 9:18 AM
To: House Record
Subject: SUPERFERRIE

TO CHAIR MR SOUKI AND
OSHIRO.

AS A FORMER KAUAIAN,I
WAS SO DISSAPOINTEED ON
THE ATTITUDE
THE PEOPLE OF KAUAI
PRESENTS TO
THE STATE OF HAWAII.NOT
ONLY A HANDFUL OF
TROUBLE MAKERS CANT
STOP THE FUTURE OF
KAUAIS GROWTH.VISTORS
AND LOCOL PEOPLE
SHOULD BE WELCOMED .
WHATS THE DIFFERENCE IF
WE VISIT THERE ON A
PLANE ,CANOE
SHIP BOAT . NA-LEI HULU
KUPUNA

RESIDENT
MANAGER

BRIAN T

House Testimony

From: Jim [baysimpsons@earthlink.net]
Sent: Thursday, October 25, 2007 9:06 AM
To: House Record
Subject: HB 1 RELATING TO TRANSPORTATION

ATTN: House Committee on Transportation and House Committee on Finance
DATE: Thursday, October 25, 2007
TIME: 9:00 a.m. Auditorium, State Capitol

Aloha to our fellow Kama Aina:

Many Kauai Superferry supporters are very reasonably frightened to publicly air our support for the Superferry; we have families, we work, yet we are the majority. Please don't allow loud pirates to hijack our options.

Tens of millions of our tax dollar\$ are spent for harbor facilities. Investors money creates a plan and a vessel. Kama aina start their new jobs; and now we awaken to the environmental issue? Is it a coincidence that the Superferry company is being broken with this timing? What about Matson and the others, should we shut them down too?

Witnessing the tactics and demeanor of anti-ferry activists has really convinced us that our aina is not the real issue. Anti-growth, anti-business and political advantage seem to be the real core of this and many current issues

The people of Hawaii want inter-island transportation choices. Hawaii Superferry is a transportation alternative that is wanted and needed by our residents and businesses of Hawaii. The Superferry will bring many benefits to our people and our state.

Persons of genuine goodwill look for win / win solutions from the beginning to an amenable completion of any issue. Divide and conquer is shameful; no goodwill is present. Will we rise above these trite, trash , travesties of our time?

Aloha?

Mahalo, Jim Simpson ~ Koloa ~ baysimpsons@earthlink.net

House Testimony

From: TailorMadeVend@aol.com
Sent: Thursday, October 25, 2007 9:17 AM
To: House Record
Subject: (no subject)

ATTN: House Committee on Transportation and House Committee on Finance
DATE: Thursday, October 25, 2007
TIME: 9:00 a.m. Auditorium, State Capitol

HB 1 RELATING TO TRANSPORTATION

Requires the Department of Transportation to perform an environmental impact statement (EIS) for certain improvements made to commercial harbors. Permits operation of large capacity ferry vessel company prior to completion of EIS upon meeting certain minimum conditions. Establishes a temporary Hawaii Inter-island Ferry Oversight Task Force.

Dear Chairs Souki and Oshiro:

My name is *Vikki Ferstler* and I strongly support Hawaii Superferry.

I strongly support the superferry ,

- 1. an alternative mode of transportation to outer islands*
- 2. help businesses transport their produce etc. same day delivery*
- 3. School sport teams can go outer island for sport activity with their gear*
- 4. a fun and relaxing way for tourists and locals alike to venture to outer island if only for a day*
- 5. in a case of an emergency (hurricane, fire, terrorist attack ,etc.) supplies can get to outer island)*

6.MOST IMPORTANT THE MAJORITY OF THE PEOPLE ARE IN FAVOR OF SUPERFERRY! THE CONSTITUTION IS FOR THE PEOPLE AND BY THE PEOPLE!! PUT IT TO THE PEOPLE FOR A VOTE!!

DOMACRACY IS WHAT THIS COUNTRY IS ALL ABOUT NOT A HANDFUL OF PAID OFF INDIVIDUALS.LET THE PEOPLE VOTE ON THE SUPERFERRY. THE SUPERFERRY WILL NOT ENDANGER ANY PART OF THE ENVIORMENT ANY MORE THAN THE BARGES,PLANES,RENTAL CARS, FISHERMAN ETC.THE RAIL SYTEM WILL ENDANGER THE ENVIORMENT MORE THAN THE SUPERFERRY . THIS IS IF NOT TOTALLY REDICULAS IT IS AN OUTRAGE.

[VIKKI FERSTLER

886 AKUMU PLACE

KAILUA HI 96734

8082626737

10/25/2007

House Testimony

From: Deanne Swenson [deanneswenson@yahoo.com]
Sent: Thursday, October 25, 2007 8:47 AM
To: House Record
Subject: testimony regarding the Superferry

Thank you for the opportunity to voice my feeling on this issue.

I am strongly in support of allowing the SuperFerry to operate during the Environmental Impact Study.

I speak from the voice of experience. I was born and raised in the Pacific Northwest, in 'ferry country'. My mother grew up on Whidbey Island, totally dependent on the ferry system to get to and from the mainland. I have used the ferry frequently for pleasure and for business. I have worked with those who commuted daily. I lived in this area for fifty years, enjoying ferry travel.

There has been a high speed ferry, the Victoria Clipper (4 boats I believe), travelling between Seattle and Victoria - through year around whale territory - for over twenty years, and I have never heard of a collision with a whale.

Whales, according to those who opposed the sonar testing, have extremely sensitive hearing and senses. To have avoided these high speed ferries in the Pacific Northwest for all these years, they must have a very good sense of when a ferry is approaching, and move out of the way.

The traffic concerns: I have seen ferry traffic control at Mukilteo, Port Townsend, Edmonds, Anacortes, Clinton, plus many more. In all cases, there is a 'ferry traffic lane'. All vehicles going on the ferry are in this lane, which leads directly into the ferry staging area. Local traffic goes BY the ferry lanes - coming and going, turning right and left, with no impact to local traffic. And this is in areas where thousands of vehicles daily travel on the ferries! 200 cars plus passengers on the Big Island will absolutely NOT impact travel to any noticable degree.

The BEST way to perform an environmental study is to perform it while the ferry is in operation. This way direct observations and data will be accumulated, instead of conjecture.

I attended, and gave testimony, at the meeting Tuesday in Kona. It was quite an eye-opener for me to see the irrational and illogical performance of many opponents of this bill. I am not an expert. I am a witness and experienced in ferry systems. I was dismayed by the threats of lawsuits and 'civil disobedience'.

It would be understandable for you to choose the path of least resistance. If you pass this bill, there will be frivolous but time consuming lawsuits, and more protests. If you do not pass this bill, the 90% constituency in favor of it, will just be disappointed, but won't turn violent! I am sorry you are being put in this position, but trust you will do your very best to address this wisely.

I appreciate each and every one of you who have put aside personal plans and are taking the time to have this special session.

Thank you for allowing me to voice my opinion.

Deanne Swenson, Kealakekua

10/25/2007

House Testimony

From: A Castaneda [leaveit_1hoo@yahoo.com]

Sent: Thursday, October 25, 2007 9:00 AM

To: House Record

ATTN: House Committee on Transportation and House Committee on Finance

DATE: Thursday, October 25, 2007

TIME: 9:00 a.m. Auditorium, State Capitol

HB 1 RELATING TO TRANSPORTATION

Requires the Department of Transportation to perform an environmental impact statement (EIS) for certain improvements made to commercial harbors. Permits operation of large capacity ferry vessel company prior to completion of EIS upon meeting certain minimum conditions. Establishes a temporary Hawaii Inter-island Ferry Oversight Task Force.

Dear Chairs Souki and Oshiro:

My name is *Abigail Castaneda* and I strongly support Hawaii Superferry.
I believe it will make available many opportunities for families and small business.

For families, it will make it easier to travel with children and seniors who have many personal needs. Traveling by ferry will allow families to deal with many of those issues such as diaper changes, weak bladders, fear of flying, separate seating, etc.

For small business, it will give them more opportunities to sell their products throughout the islands. This will help keep the island economy healthy and growing.

*Abigail Castaneda
95-035 Kahoea Street
Mililani, HI
808-216-2128*

Do You Yahoo!?

Tired of spam? Yahoo! Mail has the best spam protection around
<http://mail.yahoo.com>

House Testimony

From: whalewritermaui@mac.com
Sent: Thursday, October 25, 2007 9:03 AM
To: testimony
Cc: House Record
Subject: Testimony regarding Hawaii Superferry bill -- I will not be able to attend hearings today.

Testimony regarding Hawaii Superferry bill -- I will not be able to attend hearings today.

My name is Anne Rillero, the Communications Director of Pacific Whale Foundation. I am speaking on behalf of Pacific Whale Foundation's 140 Maui- employees and its 275,000 members and supporters both in Hawaii and around the world.

My message is simple: do not create special legislation allowing a start-up business to operate without complying with Hawaii's environmental laws - particularly HRS 343. We believe such an act would be both illegal and unconstitutional.

If, for some unfathomable reason you choose to pursue this unprecedented and slippery legal slope, we recommend the following conditions be made an integral part of any contemplated legislation:

1. Route: The HSF should never be allowed to use its' proposed "southern route", which transits waters of Penguin Banks and south of Molokai. All travel to and from Maui must be north of Molokai and never enter waters less than 1000 fathoms, unless on entry to and from Kahului or Honolulu Harbors.
2. Speed: In waters depths of 1000 fathoms or less, HSF be limited to speeds of 13 knots or less.
3. Whales: Given HSF acknowledged in court their high-speed vessel has a 100 yard blind spot in front of it, whereby any whale surfacing in this area will be hit (and likely killed), HSF must obtain an Incidental Take permit for endangered humpback and sperm whales found in Hawaii's waters. HSF will be required to apply for such a permit from NOAA's Office of Protected Resources and comply with all such requirements as detailed under Section 10 of the Endangered Species Act prior to operation.
4. Mitigation of Blind Spot: To help reduce the likelihood of HSF hitting whales found inside its 100 yard blind spot, HSF must install a series of cameras on its bow, and the video from these cameras be routed to the wheelhouse whereby a dedicated observer be required to monitor them at all times during operation.
5. Approach Limits: HSF be required to abide by their own self- imposed approach restrictions to humpback whales based upon the Atlantic Right Whale Code which limits approach to no closer than 500 yards and requires that should a vessel find itself within 500 yards to a whale, that it reduce its speed to "a slow safe speed" of 12 knots and depart the area.
6. Marine Life Mitigation Plan: HSF be required to develop, in concert with State and Federal agencies, a Marine Life Mitigation Plan minimizing impacts to whales, dolphins, endangered and threatened turtles and endangered monk seals, and other marine life.
7. Nighttime operations: During humpback whale breeding and calving months, November 1 - June 1, HSF must curtail all nighttime operations. Operation hours will be limited from 30 minutes prior to sunrise to 30 minutes after sunset.
8. Air pollution: To minimize air pollution created by HSF massive engines, the vessel must be required to burn only on-road diesel, and be encouraged to utilize a bio-diesel blend ensuring lower emissions. Further the vessel should be retrofitted with hospital grade mufflers to reduce emissions.
9. Wake: Wake damage from ferries is a serious problem in all communities where they operate. While within one nautical mile of any shoreline HSF must reduce its speed to 6

knots or less.

10. Research: HSF be required to fund independent research identifying distribution and abundance of cetaceans along its routes and to determine long-range effects of these populations due to its operation.

Pacific Whale Foundation is committed to ensuring all facts are heard and understood and that Hawaii and Federal laws protecting the environment are upheld and complied with. Pacific Whale Foundation President Greg Kaufman will be happy to provide scientific expertise during your deliberations on this sensitive matter.

Again, we urge you to reject any special legislative efforts to exempt Hawaii Superferry from compliance with HRS 343 and other environmental laws.

Sincerely,
Anne Rillero
Communications Director
Pacific Whale Foundation

House Testimony

From: Dennis Delos-Reyes [dennisdelosreyes@gmail.com]
Sent: Thursday, October 25, 2007 9:02 AM
To: House Record
Subject: Superferry Support

ATTN: House Committee on Transportation and House Committee on Finance
DATE: Thursday, October 25, 2007
TIME: 9:00 a.m. Auditorium, State Capitol

HB 1 RELATING TO TRANSPORTATION

Requires the Department of Transportation to perform an environmental impact statement (EIS) for certain improvements made to commercial harbors. Permits operation of large capacity ferry vessel company prior to completion of EIS upon meeting certain minimum conditions. Establishes a temporary Hawaii Inter-island Ferry Oversight Task Force.

Dear Chairs Souki and Oshiro:

My name is *Dennis Delos-Reyes* and I strongly support Hawaii Superferry.

Having the Superferry is so necessary for everyone, whether they live here on the islands or tourism. Tourism is extremely important to the islands. We need to do everything to keep tourism here. And, the Superferry is important for people who live on the islands. Why should there only be one way to get to other islands? There should be multiple choices; air or water. Work out the details and make this work. We need the Superferry.

--

Dennis Delos-Reyes, B.S., M.A.
75-6148 Ho'omama Street
Kailua-Kona, HI 96740
808-895-2771

House Testimony

From: KIANA WONG [KWONG@queens.org]
Sent: Thursday, October 25, 2007 9:33 AM
To: House Record
Subject: Superferry Supporter...

ATTN: House Committee on Transportation and House Committee on Finance
DATE: Thursday, October 25, 2007
TIME: 9:00 a.m. Auditorium, State Capitol

My name is Kiana Wong, My boyfriend Gabriel Kahoonei and I both strongly support Hawaii Superferry.

Our families come from Kaua'i & Maui and we hardly ever get to see each other. The Superferry would allow us to see our family more often at a cheaper price then flying. The superferry I feel would mainly be used by locals, so why not approve something that would help out our own people. Also I think that even if all the Hawaiian Islands have different names we are still one state. Being able to have access to all the islands I think would be beneficial to everyone.

I do understand that an EA is important but there are a lot of ships that go around each island now I dont understand why the superferry is any different then all the cruz ships I see by Aloha Tower.

Mahalo,
Kiana wong & Gabriel Kahoonei
87-211 Maia St
Waianae, HI. 96792

House Testimony

From: Nadine Caluag [caluag1992@yahoo.com]
Sent: Thursday, October 25, 2007 9:09 AM
To: House Record
Subject: I strongly support the superferry

ATTN: House Committee on Transportation and House Committee on Finance

DATE: Thursday, October 25, 2007

TIME: 9:00 a.m. Auditorium, State Capitol

HB 1 RELATING TO TRANSPORTATION

Requires the Department of Transportation to perform an environmental impact statement (EIS) for certain improvements made to commercial harbors. Permits operation of large capacity ferry vessel company prior to completion of EIS upon meeting certain minimum conditions. Establishes a temporary Hawaii Inter-island Ferry Oversight Task Force.

Dear Chairs Souki and Oshiro:

My name is [Nadine Alyceson Caluag] and I strongly support Hawaii Superferry.

[I support the Superferry because I think it will give new meaning to those who cant afford to pay for a airline fair ... I have 4 children and I have spent thousands of dollars just to take a family vacation... I feel the superferry will give everyone a chance to experience even the low income people to enjoy the outter Islands.I still say you will never know unless you try, So I think we should be given the chance to atleast try and see how much of a positive or negative impact it will bring.)]

[Nadine A Clauag

74-5219 Kihawahine St

Kailua Kona Hawaii 96740

808-329-3377 or 808-217-9923

Do You Yahoo!?

Tired of spam? Yahoo! Mail has the best spam protection around
<http://mail.yahoo.com>

House Testimony

From: Schultz Rod [schultz369@gmail.com]
Sent: Thursday, October 25, 2007 9:35 AM
To: House Record
Subject: Super Ferry

ATTN: House Committee on Transportation and House Committee on Finance
DATE: Thursday, October 25, 2007
TIME: 9:00 a.m. Auditorium, State Capitol

HB 1 RELATING TO TRANSPORTATION

Requires the Department of Transportation to perform an environmental impact statement (EIS) for certain improvements made to commercial harbors. Permits operation of large capacity ferry vessel company prior to completion of EIS upon meeting certain minimum conditions. Establishes a temporary Hawaii Inter-island Ferry Oversight Task Force.

Dear Chairs Souki and Oshiro:

My name is Roderick A. Schultz and I strongly support Hawaii Superferry.

I believe a second form of inter-island transportation is essential for the future health of the state. Relying on air transportation alone is bad business practice and unreliable.

I believe the environmental concerns raised by residents who have no knowledge or experience with the sea are overblown. I have been sailing the waters of the Hawaiian Islands for 25 years on fast ocean going vessels and slow ones. Sea mammals are few and far between, they stay out of the way of ships, and they are easily avoided. Most unhealthy encounters by boats involve those who are trying to get close to mammals, not those who are trying to avoid them.

I cannot understand why ocean liners are allowed to come and go as they please, but the superferry is restricted. The superferry is smaller and more maneuverable and less hazardous to the environment. Why are foreign and mainland tourists given transportation options, yet Hawaiian residents are not?

Navy and Coast Guard ships have been plying the waters at high speed for decades, and there is little evidence that they have harmed any marine mammals.

Let the Superferry sail while the EIS is conducted.

RODERICK A. SCHULTZ

10/25/2007

5314 Oio Drive

Honolulu, HI 96821

808-373-1712

House Testimony

From: dawn lundquist [dawn@lundquiststudios.com]
Sent: Thursday, October 25, 2007 9:18 AM
To: House Record
Subject: Super Ferry Testimony

Aloha I totally support the super Ferry. It will be wonderful for small business and for me a boon to be able to travel with my art and my van to other islands. Without the super Ferry this would be a daunting task, which by the way I have not done as it is so inconvenient and expensive by other means. The people who travel on the Ferry would be renting cars anyway so what's the big problem? As far as danger to the environment all other archipelagos have ferries why not here? Mahalo Dawn Lundquist



Dawn Lundquist,
Fine Artist
Mediocre Philosopher
P.O.Box 819
Hanalei, Hi 96714
808 635 2785

Aloha, have a wonderful day!
Check out my web site at Lundquiststudios.com.
New paintings added daily!
Come visit the studio or host a home show
call or email for an appointment

Rest assured your email address is safe with us!

If you do not wish to receive newsletters, please reply "remove me from your list"

House Testimony

From: John McBride [mcbridel001@hawaii.rr.com]
Sent: Thursday, October 25, 2007 9:54 AM
To: House Record
Subject: Support Hawaii Superferry

ATTN: House Committee on Transportation and House Committee on Finance
DATE: Thursday, October 25, 2007
TIME: 9:00 a.m. Auditorium, State Capitol

HB 1 RELATING TO TRANSPORTATION

Requires the Department of Transportation to perform an environmental impact statement (EIS) for certain improvements made to commercial harbors. Permits operation of large capacity ferry vessel company prior to completion of EIS upon meeting certain minimum conditions. Establishes a temporary Hawaii Inter-island Ferry Oversight Task Force.

Dear Chairs Souki and Oshiro:

My Name is John K. McBride, there is a number of people who talking against the Superferry which they have that right but, there is a greater silent majority of which I am a part of which supports the Superferry. The EIS is important and should be done while the ferry is in operation. Hawaii already has a black eye world wide for been against new business among other things in the business area. Please give your support to the superferry.

John K. McBride

Big Island Resident

199 Kualua Pl., Hilo, Hawaii

10/25/2007

To
HOUSE OF REPRESENTATIVES
THE TWENTY-FOURTH LEGISLATURE
SECOND SPECIAL SESSION OF 2007
COMMITTEE ON TRANSPORTATION

Rep. Joseph M. Souki, Chair

Rep. Scott Y. Nishimoto, Vice Chair

COMMITTEE ON FINANCE

Rep. Marcus R. Oshiro, Chair

Rep. Marilyn B. Lee, Vice Chair

MY POSITION: Please honor the Court's decision to require an Environmental Review of the HDOT Harbor project BEFORE allowing the Superferry to operate. If you pass this bill, please include the 29 conditions proposed by the Maui delegation (based on the court testimony during the recent trial.)

Aloha Committee Members:

Yesterday in my attempt to present testimony I was prevented from speaking because of time constraints. It is very disappointing, when I continue to be kept from participating within the system. This is democracy?

During the Senate testimony session it is quite clear, when the representatives of the Superferry could not answer or substantiate important questions from the Senators relative to 343 and their responsibility to the people of Hawaii and the environment. It is out in the open because it is on camera. The house should reevaluate their position. There is no logical reason to continue the Superferry operation until the 'Rule of Law' is respected and the Superferry is held responsible along with those in this administration who have deliberately circumvented the laws, rules and regulations of the state of Hawaii.

The Governors Administration is ignoring the Hawaii Supreme Court decision that the SuperFerry must adhere to an 'Environmental Assessment Statement.' The Linda Lingle Administration with Mark Bennett at the wheel continues to espouse that we must be held accountable for our sins. Mr. Mark Bennett was at the forefront in the establishment of the 3 Strikes Law, therefore the administration must be held accountable to the citizens of Hawaii if in deed the administration has broken the law.

The department of Transportation has again over stepped its boundaries and responsibly to the citizens of Hawaii. This is not the first time the Department of Transportation is neglecting the wishes of thousands of citizens of Hawaii.

Therefore, a moratorium on all efforts by the Linda Lingle administration to circumvent the Supreme Court Law should be put in place and a special prosecutor will be nominated by the legislature to fulfill a complete and impartial investigation of the Administration's covert as well as overt activities by the Administration. Mr. Mark Bennett as the Attorney General advocated and implemented the 3 strikes law. He is a profound activist on his rule of law.

The special prosecutor will conduct the investigation allowing no one immunity. All those that have violated the Supreme Court Law as well as those in the cover-up of any associated laws will be prosecuted to the full extent of the law. The prosecutor will adhere to the Federal Sentencing Guidelines as well as State Sentencing Guidelines for all those involved in violating the U.S. Constitution and the laws of the state of Hawaii.

The special prosecutor will implement within due process and hold all those accountable in the administration, that has deliberately broken the trust of the citizens of the State of Hawaii.

The committee members have in their possession testimony and legal documents on the concerns of the citizens of Hawaii about the over load of people to the outer islands with their trash, the American automobile, invasive species and the list goes on.

The Whales are a major issue, with no viable concern from the Linda Lingle administration. It is sad we can not ask the Baby Whales and Mothers for their vote on the SuperFerry. The whales that have been killed to date have been killed by vehicles traveling between 5 and 9 miles per hour, whereas the Superferry travels at over 40 mph.

My major concern is with this administration's pro-war mentality by association with John Lehman the Chair of the Board of the Superferry. The www.wikipedia.org and www.jflpartners.com web sites give a clear understanding of John Lehman's background which is a pro-military involvement. A person can just type in his name in a search engine such as Google to find answers for the real reason to have many superferrys in Hawaii. He is also connected with the 'Project for the New American Century' clean break. This organization is known as extreme radical right wing activists. Documentation from the PNAC used in the run up to the invasion of Iraq and leaving thousands of our military dead and their families without

fathers, mothers, sisters or brothers that will not be coming home. On the Iraqi side, it is over a million that have been killed with over 2 million refugees and the most precious, the children, over 500 thousand.

You must have the courage to reconsider this invasion by foreign business enemies that want nothing more than to continue the rape of the Hawaiian Islands and its people for 'Profit.'

Mahalo

Jesse Ponce de Leon
1545 Kalakaua Ave. #811
Honolulu, HI 96826

jponce@hawaii.edu
808-941-7679

House Testimony

From: La Cher @ NPK [lnapeahi@hawaii.rr.com]
Sent: Thursday, October 25, 2007 9:27 AM
To: House Record
Subject: Testimony

ATTN: House Committee on Transportation and House Committee on Finance

DATE: Thursday, October 25, 2007

TIME: 9:00 am Auditorium State Capitol

HB 1 RELATING TO TRANSPORTATION

Requires the Department of Transportation to perform and environmental impact statement (EIS) for certain improvements made to commercial harbors. Permits operation of large capacity ferry vessel company prior to completion of EIS upon meeting certain minimum conditions. Establishes a temporary Hawaii Inter-Island Ferry Oversight Task Force.

Dear Chairs Souki and Oshiro:

My name is La Cher Kawohikukapalani Napeahi and I strongly support Hawaii Superferry.

Due to the demographics and uniqueness of our islands we have been confined to the availability of the transportation options that we have now. Having the Hawaii Superferry our islanders would be able to have access to some much more. Our children would be able to travel to different historical sites and experience the essence of the different islands and what it has to offer.

As a native child of the Big Island I have not been able to explore some of the other islands that I would like to do with my family.

I also come from the last Hawaiian Fishing Village – Miloli'i, where families and children are isolated. I am the President of the community association, where we have a youth group. With hopes of the Superferry we would be able to drive our van onto the ferry, with all of our supplies instead of having to fly to another island, rent vans, make sure that all of our gear gets there and then be on our way. With the Superferry, its get on and go.

Please take into consideration the benefits of this optional transportation and the future – the KEIKI.

Mahalo nui loa ~

La Cher K Napeahi

89-785 Miloli'i Rd.

Captain Cook, HI 96704

10/25/2007

La Cher K Napeahi

Neighborhood Place of Kona

ph 808.331.8777

fax 808.331.8774

information in this e-mail is confidential and is legally privileged. It is intended solely for the addressee. Access to this e-mail by anyone else is unauthorized and may lead to civil and/or criminal penalties. If you have received this message in error, please delete all electronic copies of this message {and the documents attached to it}, and any hard copies you may have created; and notify the Neighborhood Place of Kona immediately!

10/25/2007

ATTN: House Committee on Transportation and House Committee on Finance
DATE: Thursday, October 25, 2007
TIME: 9:00 a.m. Auditorium, State Capitol

HB 1 RELATING TO TRANSPORTATION

Requires the Department of Transportation to perform an environmental impact statement (EIS) for certain improvements made to commercial harbors. Permits operation of large capacity ferry vessel company prior to completion of EIS upon meeting certain minimum conditions. Establishes a temporary Hawaii Inter-island Ferry Oversight Task Force.

Dear Chairs Souki and Oshiro:

Aloha, my name is Antoinette Tanenbaum -Gordon and I strongly support Hawaii Superferry.

Being a big island resident and home owner of 25 years and watching the many huge ships coming and going for years depositing all their waste and yet nothing being said or done; it is shocking to me that a handful of people on Maui of all islands are trying to prevent this wonderful super ferry.

What is the REAL reason? It is because the people who own and work for the rental car companies and airlines live and own on Maui. No one is talking about the real reason. So they all got together and found an "excuse" to get behind to stop the ferry from operating, because it changes the monopoly that has existed for years in the inter island transportation. I used to live in Hana in 1986 and saw over the years what "happened" to beautiful Maui, now it is a California suburb as all the tourists know. Of all the people to now use this excuse, it is certainly the pot calling the kettle black!

It will be an absolute shame if this wonderful asset to Hawaii is halted because of a few dissenters who are greedy for money and are using this as a way to stop the ferry.

I came over to be with my husband for a few months and we are anxiously awaiting when the ferry will be coming to the Big Island also. If Maui doesn't want it I am sure there are enough people on all the other islands to make up for them.

Please keep it going for ALL to enjoy!
Mahalo,

Antoinette Tanenbaum-Gordon &
Randale K. Jackson

Antoinette Tanenbaum-Gordon

15-159 North Puni Paka Loop
Pahoa, Hawai'i 96778

808 965-0350

islandantoinette@earthlink.net

House Testimony

From: Kristi Parker [kjpark@hawaii.rr.com]
Sent: Thursday, October 25, 2007 9:42 AM
To: House Record
Subject: I SUPPORT THE SUPERFERRY

ATTN: House Committee on Transportation and House Committee on Finance
DATE: Thursday, October 25, 2007
TIME: 9:00 a.m. Auditorium, State Capitol

HB 1 RELATING TO TRANSPORTATION

Requires the Department of Transportation to perform an environmental impact statement (EIS) for certain improvements made to commercial harbors. Permits operation of large capacity ferry vessel company prior to completion of EIS upon meeting certain minimum conditions. Establishes a temporary Hawaii Inter-island Ferry Oversight Task Force.

Dear Chairs Souki and Oshiro:

My name is *Kristi Parker* and I strongly support Hawaii Superferry.

I feel the Superferry is a huge benefit to all Hawaii residents and is very much needed. It will enable my family of four to travel more affordably from Kona to Honolulu to spend more valuable time with my Parents, brother and 100 year old grandmother. It will also give my grandmother who can't travel on airplanes a way to visit her granddaughter and great grandchildren on the Big Island.

Mahalo,

Kristi Parker

73-1197 Hiolani St.

Kailua-Kona, HI 96740

808-256-1669

House Testimony

From: Gorgonio, Kara [kgorgonio@castlecooke.com]
Sent: Thursday, October 25, 2007 9:47 AM
To: House Record
Subject: Personal Testimony in support of the Hawaii Superferry

ATTN: House Committee on Transportation and House Committee on Finance

DATE: Thursday, October 25, 2007

TIME: 9:00 a.m. Auditorium, State Capitol

HB 1 RELATING TO TRANSPORTATION

Requires the Department of Transportation to perform an environmental impact statement (EIS) for certain improvements made to commercial harbors. Permits operation of large capacity ferry vessel company prior to completion of EIS upon meeting certain minimum conditions. Establishes a temporary Hawaii Inter-island Ferry Oversight Task Force.

Dear Chairs Souki and Oshiro:

My name is Kara Gorgonio and I strongly support Hawaii Superferry.

We desperately need this vehicle in order for us to be able to support our farmers and small business on the outer islands. I work in a retail environment and deal with many vendors who are experiencing difficulties in surviving due to the high costs of freight. Not allowing the superferry to operate will severely affect the livelihood of many Hawaii residents and businesses.

Kara Gorgonio

95-1057 Pikokea Street

Mililani, Hawaii 96789

(808) 255-8474 (cell)

Confidentiality Notice: The information contained in this message and any attachments may contain confidential or proprietary material and is intended solely for the use of the person or entity to which it is addressed. Any unauthorized review, use, disclosure or distribution of this communication is strictly prohibited. If you have received this communication in error, please immediately notify the sender by reply e-mail and destroy all copies of this communication and any attachments.

10/25/2007

House Testimony

From: CRRGaines@aol.com
Sent: Thursday, October 25, 2007 9:45 AM
To: House Record
Subject: Support Letter for Superferry

ATTN: House Committee on Transportation and House Committee on Finance
DATE: Thursday, October 25, 2007
TIME: 9:00 a.m. Auditorium, State Capitol

HB 1 RELATING TO TRANSPORTATION

Requires the Department of Transportation to perform an environmental impact statement (EIS) for certain improvements made to commercial harbors. Permits operation of large capacity ferry vessel company prior to completion of EIS upon meeting certain minimum conditions. Establishes a temporary Hawaii Inter-island Ferry Oversight Task Force.

Dear Chairs Souki and Oshiro:

My name is Christopher Gaines and I strongly support Hawaii Superferry.

Where I appreciate the environmental concerns that have been brought to the public's attention, I believe these environmental concerns are more of a "red herring", or a last ditch arguing point to try and prevent a much needed service to our State by a very small few who will be negatively financially affected by the success of this venture. I am also equally fearful of the potential business investment withdrawal that can and will happen as a result of the Superferry's shutdown and bankruptcy.

Other than the Superferry colliding with Whales due to the high speed, which I would assume can be dealt with by sophisticated radar and sonar equipment, I do not understand how the Superferry is any more or less dangerous than a Young Brother's or Smith Maritime Tug and Barge. How will the Superferry promote any more invasive species contamination than we already experience with these barges and with inter-island plane traffic?

As I see it, the Superferry did not hide its intentions. It was greeted with open arms by the state and the vast majority of the public. To punish the Superferry and its investors as well as the people who have banked on a job or career with this company, at the very last minute is inexcusable. This last minute shutdown reminds me of the corruption and fraud that I have experienced in third-world countries. How will future investors in Hawaii ventures respond, knowing, that even though they have been given approval, their ventures can be shut down at the last minute without any recourse?

We, as a State, and a community, are better than this. A compromise must be made to ensure that this business is given the chance to succeed.

Christopher Gaines

808 922 1298
CRRGaines@aol.com

See what's new at AOL.com and [Make AOL Your Homepage.](#)

10/25/2007

House Record

From: kim usher [teriann1@hotmail.com]
Sent: Thursday, October 25, 2007 10:00 AM
To: House Record
Subject: RE: Whales, Superferry and improper use of the legislative process

Monday, October 22, 2007

Aloha To Our Elected Officials,

I have been an islander since I was fifteen and came here to Maui in 1971 to attend Seabury Hall. I would like to address the above subjects. Before I do here is some background on myself and some processes of government I have found interesting.

1) I traveled 2500 miles to vote on a ballot that asked to raise taxes in a district that was becoming a younger neighborhood and wanted more money for the schools -- the problem was that there were many more older retired people in this city of Wilmette who could not afford the increase. I had worked as a school photographer in all the schools in the Chicago neighborhoods and also the schools in Wilmette. The schools there were like Palaces compared to the other schools in Chicago and I felt that the children would not suffer, but the elderly would -- by an increase in taxes. The tax increase was not passed by 100 votes.

2) In the state of Arizona we passed the medical marijuana initiative and watched as the legislature voted to put it on hold until the Federal laws would allow it. The next time we voted the ballot said (in my words) That the Federal Government had no right to tell us what to do and that they could go to *&^%\$%#* and so could the Arizona legislature. It passed with more than 65% of the vote.

3) I marched around the courthouse in Hilo begging the court to make stricter sentences for sexual abuse cases. We are still trying to bring more understanding to the community the horror of this type of action and that it really does exist. I helped put Dr. Richard Williams in Prison, only 8 years, and that took 2 years of talking and telling people he was doing something wrong. Then when he ran away to avoid prosecution I went to the corporation counsel and asked them to bring him back and prosecute. Afterwards many people came to tell me more stories of what he had done to them besides the three women who came forward to the police. I believe he was drugging and raping at least one woman a day in his office.

4) The City Clerk of Chicago gave me a certificate of appreciation for being one of those who care and take action to help solve the problems in the City of Chicago.

5) Working with the Main Street Program in Hilo I found that the older more established merchants were left out of the loop except for when there was a need for something to donate. I never hear

about Maui's Main Street Program, except complaints from Paia who are not receiving enough of the benefits. Redevelopment doesn't mean bring in new but (in my opinion) to help the older businesses become more innovative. Why does Young Brothers need to raise rates? Because money that could be better spent was misappropriated and used in the harbor elsewhere with out the proper authorization..

This brings me to the subject of the Superferry. When one uses their hearts and minds to bring change, there is a different approach to the subject. Our island is not a feast to eat and we do not think with our stomachs or other lower parts of our bodies representing power, control and security. WE are a living breathing system and because we are an island, this includes the living ocean and the beings in it. Even though there are certai

reasons that the Superferry might be good, there are many other reasons it is not. Our system is delicate and must be treated as such a system that includes the understanding of change to a system. The environmental impact assessment determines how something will change this system and should have never been overlooked or not required. Alot of people spent alot of time making the environmental laws we follow today.

Usurping our law is no way to bring change. In my opinion, this is being done to feed others when there never was and they never were invited to a feast. The people who are behind this are only here for the money, and to eat up what they can. I will not be propagandized on this subject and I truly believe that there are some underhanded dealings here. Move in the right direction in this matter. There are laws and all must obey, as that is the will of the people. We the people have already spoken -- informational meetings and unsanctioned polls do not replace the votes in an election. Go the extra mile and stand-up to those who want our legislature to go against the voters wishes and the laws we the people have sanctioned.

Mahalo and Aloha,
Kim Usher
856-5735

P.S. I miss the wili wili trees. Maui is special lets keep it special.
The Whales and other sea creatures are counting on you!

Help yourself to FREE treats served up daily at the Messenger Café. Stop by today!
<http://www.cafemessenger.com/info/info_sweetstuff2.html?ocid=TXT_TAGLM_OctWltagline>

House Record

From: deborahk chrisp [krissyvar@yahoo.com]
Sent: Thursday, October 25, 2007 9:30 AM
To: House Record
Subject: Re: Superferry

ATTN: House Committee on Transportation and House Committee on Finance

DATE: Thursday, October 25, 2007

TIME: 9:00 a.m. Auditorium, State Capitol

HB 1 RELATING TO TRANSPORTATION

Requires the Department of Transportation to perform an environmental impact statement (EIS) for certain improvements made to commercial harbors. Permits operation of large capacity ferry vessel company prior to completion of EIS upon meeting certain minimum conditions. Establishes a temporary Hawaii Inter-island Ferry Oversight Task Force.

Dear Chairs Souki and Oshiro:

My name is Deborah Randolph and I strongly support Hawaii Superferry.

I believe that it would be a great benefit to all of the citizens of the state of Hawaii. The Supperferry will provide an affordable way to travel and an enjoyable one. I ask that you let the Supperferry run, if the people here don't like it after it runs they wont use it. If we like it which we will we will ride with pride!

Thank you for you consideration,
Deborah Randolph
469-471-8098

Do You Yahoo!?

Tired of spam? Yahoo! Mail has the best spam protection around
<http://mail.yahoo.com>

Do You Yahoo!?

Tired of spam? Yahoo! Mail has the best spam protection around <http://mail.yahoo.com>

House Testimony

From: Tana Hilliard [tana@aloha.net]
Sent: Thursday, October 25, 2007 10:40 AM
To: House Record
Subject: Superferry

ATTN: House Committee on Transportation and House Committee on Finance
Date: October 25, 2007

Dear Chairs Souki and Oshir:

I support the Superferry. The reports re: the minor negative impacts on the environment seem minimal. It seems that the public waited too long to try to stop the Superferry. Where were the protesters when the news came out that it was going to happen? With the flights between islands getting more and more expensive, we need an alternative means of transportation.

With regards,

Tana Hilliard
P.O. Box 310
Kamuela, HI 96743

Tana Hilliard
Phone: 808-885-4985
Fax: 808-885-5373
Email: tana@aloha.net

No virus found in this outgoing message.

Checked by AVG Free Edition.

Version: 7.5.503 / Virus Database: 269.15.10/1091 - Release Date: 10/24/2007 2:31 PM

10/25/2007

House Testimony

From: ED MUEGGE [edward.muegge@hawaiiantel.net]
Sent: Thursday, October 25, 2007 10:52 AM
To: House Record
Subject: support for the superferry

Edward F. Muegge 808-879-3544 Emuegge@gmail.com

I do am unable to attend in person due to a disability.

There are a number of reasons why the Superferry should be able to operate while the EIS is being conducted.

There are too many reasons to list in support of this action to list here, but here are a few.

1. The ferry should not be punished because the State made a mistake!
2. This is the only inter-island transportation that is disabled friendly to traveling with personal TRANSPORTAION that is not on most islands to rent or is too expensive.
3. This is **not** the only OCEAN transport that is carrying cars, trucks, etc inter-island, and the others have not been required to meet these standards.
4. Other inter-island transports carry a much larger risk of environmental contamination because of different requirements than the SF has had to under go.
 - a. How many barges carry sonar?
 - b. How many barges can turn on a dime?

Failure to allow the SF to operate will cause the taxpayers to pay a huge bill, and possibly be liable for substantial law suites from the SF investors-owners.

Never in my lifetime will I ever see another company try to introduce this disabled friendly type of transportation again in the state of Hawaii.

This will also send a message to outside investors that Hawaii is a huge risk even when you have all the required agreements to go ahead with your project.

I have been dreaming of this service since I first hear of it three years ago. As a disabled Veteran that uses an electric scooter and converted van for mobility, I was looking forward to being able to travel the state of Hawaii like I use to in CA. and other states that I did my ADA access work in.

Please allow the SF to remain viable here in Hawaii, at least until the EIR is completed. Without the support of our representatives the law will dictate that the SF will leave the state of HI for good. I don't see how good consciousness can allow this with out an EIS that supports discontinuing the service.

Loss of the SF would be a huge loss to the disabled community. One, which I feel the community should respond too.

Mahalo; for your time, consideration, and support in this matter.

Sincerely;
Ed Muegge 808-879-3544

House Testimony

From: AlohaGJL@cs.com
Sent: Thursday, October 25, 2007 10:29 AM
To: House Record
Subject: Superferry

Attn: House Committee on Transportation and House Committee on Finance
Date: Thursday october 25, 2007

Dear Chairs Souki and Oshiro:

My Name is Gerald Lindman of Pahoia and I support the Superferry.

I believe it will be an economic benefit to our State. It will provide another option for transporting both people and goods between the islands.
Please pass the proposed bill to let the superferry operate while the EIS is being done and do not attach so many restrictions to the bill that it makes the operation of the ferry uneconomical.

House Testimony

From: Bob Mundy [rcmundy@hawaiiantel.net]
Sent: Thursday, October 25, 2007 10:37 AM
To: House Record
Subject: Support of Hawaii Superferry

ATTN: House Committee on Transportation and House Committee on Finance
DATE: Thursday, October 25, 2007
TIME: 9:00 a.m. Auditorium, State Capitol

HB 1 RELATING TO TRANSPORTATION

Requires the Department of Transportation to perform an environmental impact statement (EIS) for certain improvements made to commercial harbors. Permits operation of large capacity ferry vessel company prior to completion of EIS upon meeting certain minimum conditions. Establishes a temporary Hawaii Inter-island Ferry Oversight Task Force.

Dear Chairs Souki and Oshiro:

My name is [Robert Clay Mundy] and I strongly support Hawaii Superferry.

Every since the inter-island freighter service ended in the 1950's, Hawaii has been in need of an ocean going mode of transportation for it's people. The "**Hawaii Superferry**" is the **LONG** over due answer to that need.

ALL the concerns that have been mentioned at protest rallies, public and court hearings, are issues that exist presently (with or without the **Superferry**) and we must continue with a reasonable monitoring of these concerns. In the meantime let the **Superferry** begin operation, for the movement of people and their possessions between the islands is going to happen, whether the **HAWAII SUPERFERRY** is operating or not.

Should we have the courts issue an injunction order to prevent motor vehicle owners from operating them, for they **MIGHT** hit an animal, human or another vehicle.

These people are not **PROPHETS** and are irresponsibly making claims that are purely **CONJECTURAL**.

The **IRREPARABLE** damage is not going to be to our **natural resources** and **protected species**, if the **Superferry** was to operate, but instead to an opportunity for **travel options, increased commercial growth and ultimately an improved economy**, if the **Superferry** is not allowed to operate.

Lastly, our **judicial system** is an **embarrassment**. **Bad law** will cause what is **right to oppose** it.

Aloha Plenty!!!!

10/25/2007

ROBERT C. MUNDY

605 Hina Ave.

Kahului, Hawaii 96732

rcmundy@hawaiiantel.net

PCS: (808) 205-7030

Home: (808) 871-7037

House Testimony

From: MaryAnn Makaimoku [suni-girl@hawaiiantel.net]
Sent: Thursday, October 25, 2007 10:23 AM
To: House Record
Subject: Support

Attn: House Committee on Transportation and House Committee on Finance
Date: Oct. 25, 2007
TIME: 9:00 a.m. Auditorium, State Capitol

HB 1 RELATING TO TRANSPORTATION

Requires the Department of Transportation to perform an environmental impact statement (EIS) for certain improvements made to commercial harbors. Permits operation of large capacity ferry vessel company prior to completion of EIS upon meeting certain minimum conditions. Establishes a temporary Hawaii Inter-island Ferry Oversight Task Force.

Dear Chairs Souki and Oshiro:

My name is Mary Makaimoku and I am in support of the Super Ferry as I feel we need other means of transportation between the islands other than by air or barge.

Mary Makaimoku

RR 3, box 1032

Pahoa, HI 96778

808-982-5730

House Testimony

From: Terrie Hayes [terrie_hayes@hotmail.com]
Sent: Thursday, October 25, 2007 10:20 AM
To: House Record
Subject: Oppose H.B. 1

We oppose H.B.1 and any special consideration to: avoid an EA/EIS; operate the Superferry while one is being conducted, or allow any excessive speed, 40-45 knots during whale season, without any comment from the DLNR. Mr. Fukunaga's failure to answer directly is a RED FLAG. LET THE COURT'S DECISION STAND!

Sincerely, Terrie Hayes and Billy Kaohelaulii
2249 Kuai Rd., Koloa, Hi. 96756
(808) 742-9575

Help yourself to FREE treats served up daily at the Messenger Café. Stop by today!

House Testimony

From: scott swanson [scottswanson@hotmail.com]
Sent: Thursday, October 25, 2007 10:20 AM
To: House Record
Subject: Please let the Superferry Sail

ATTN: House Committee on Transportation and House Committee on Finance

DATE: Thursday, October 25, 2007

TIME: 9:00 a.m. Auditorium, State Capitol

HB 1 RELATING TO TRANSPORTATION

Requires the Department of Transportation to perform an environmental impact statement (EIS) for certain improvements made to commercial harbors. Permits operation of large capacity ferry vessel company prior to completion of EIS upon meeting certain minimum conditions. Establishes a temporary Hawaii Inter-island Ferry Oversight Task Force.

Dear Chairs Souki and Oshiro:

My name is *Scott Swanson* and I strongly support Hawaii Superferry.

New alternative to interisland transportation.....I have lot my job to to the Maui Court ruling..... air fare is going up to \$80.....we need alternatives

Scott Swanson

1650 Kanunu St

#616

Honolulu, Hawaii 96815

Peek-a-boo FREE Tricks & Treats for You! [Get 'em!](#)

House Testimony

From: Scott Swanson [scott.swanson@hawaiiisuperferry.com]
Sent: Thursday, October 25, 2007 10:18 AM
To: House Record
Subject: Let Super Fairy Sail :: House Committee on Transportation and House Committee on Finance

ATTN: House Committee on Transportation and House Committee on Finance
DATE: Thursday, October 25, 2007
TIME: 9:00 a.m. Auditorium, State Capitol

HB 1 RELATING TO TRANSPORTATION

Requires the Department of Transportation to perform an environmental impact statement (EIS) for certain improvements made to commercial harbors. Permits operation of large capacity ferry vessel company prior to completion of EIS upon meeting certain minimum conditions. Establishes a temporary Hawaii Inter-island Ferry Oversight Task Force.

Dear Chairs Souki and Oshiro:

My name is *Scott Swanson* and I strongly support Hawaii Superferry.

New alternative to interisland transportation

Scott Swanson

1650 Kanunu St

#616

Honolulu, Hawaii 96815

House Testimony

From: wahler robert [fuzzrabbit@hotmail.com]
Sent: Thursday, October 25, 2007 11:02 AM
To: House Record
Subject: Superferry

ATTN: House Committee on Transportation and House Committee on Finance

DATE: Thursday, October 25, 2007

TIME: 9:00 a.m. Auditorium, State Capitol

HB 1 RELATING TO TRANSPORTATION

Requires the Department of Transportation to perform an environmental impact statement (EIS) for certain improvements made to commercial harbors. Permits operation of large capacity ferry vessel company prior to completion of EIS upon meeting certain minimum conditions. Establishes a temporary Hawaii Inter-island Ferry Oversight Task Force.

Dear Chairs Souki and Oshiro:

My name is Robert Wahler, and I strongly support Hawaii Superferry.

This is a needed service on the Big Island. We must help businesses that need to ship product (like mine--macadamia) and also support tourism and locals needing travel alternatives. Competition is good. Environment concerns have been overstated by many in opposition. The state bears responsibility for the financial trouble that may befall the owner, as it lead them to believe proceeding with the ferry was OK. Let the ferry serve until the studies are completed.

P.O. Box 1011 Pepeekeo, HI 96783 896-6203

Peek-a-boo FREE Tricks & Treats for You! [Get 'em!](#)

House Testimony

From: Lindsay Kamm [lindsay@lauhala.com]
Sent: Thursday, October 25, 2007 11:04 AM
To: House Record
Subject: HB 1 RELATING TO TRANSPORTATION

DEAR CHAIRS SOUKI AND OSHIRO:

As a lifelong resident of Hawaii and a resident of Kauai for over 30 years, I have been looking forward to interisland travel via the Superferry. I am a public school teacher with no ties to anyone employed (or formerly employed) by the Superferry. I have followed the developments of the last couple of months closely, and I am hopeful that the Legislature will allow the Superferry to operate while the mandated studies are being conducted. The State of Hawaii and the taxpayers are already invested in this mode of transportation, the Superferry has been built at great expense, and it is unreasonable to expect that it can sit idly for months on end. If the business should fail because it is not allowed to operate, that would have very bad consequences for our State.

Please do not think that the 1,000 people shown on the TV news speak for the people of Kauai. They are a small fraction of the 60,000 or more who live here, and they speak only for themselves. I believe that the owners of the Superferry have developed this project in good faith, that they are more than willing to obey the law, and that it would be grossly unfair not to allow the boats to run.

With aloha,
Lindsay Kamm
3732 Omao Rd.
Koloa, HI 96756
(808) 742-1752

10/25/2007

House Testimony

From: Victoria Guarracino [vguarracino@kipplynn.org]
Sent: Thursday, October 25, 2007 3:34 AM
To: House Record
Subject: Please protect whales and Hawaii's environment! Do not pass a special bill that would override the court's decision about the Hawaii Superferry!

Dear Legislators,

I am strongly opposed to Governor Lingle's proposed bill to overrule the court's decision about the Hawaii Superferry.

The law is clear. The Hawaii Superferry needs to have an Environmental Assessment before it begins operation in Hawaii.

Please do not weaken our state's environmental laws to cater to one special interest and privately owned business. I urge you to stand by the court's decision. Please put Hawaii's environment first.

*Sincerely,
Vicky Guarracino*

10/25/2007

House Testimony

From: matthew cerizo [matthewcerizo@yahoo.com]
Sent: Thursday, October 25, 2007 11:14 AM
To: House Record
Subject: Super Ferry

ATTN: House Committee on Transportation and House Committee on Finance
DATE: Thursday, October 25, 2007
TIME: 9:00 a.m. Auditorium, State Capitol

HB 1 RELATING TO TRANSPORTATION

Requires the Department of Transportation to perform an environmental impact statement (EIS) for certain improvements made to commercial harbors. Permits operation of large capacity ferry vessel company prior to completion of EIS upon meeting certain minimum conditions. Establishes a temporary Hawaii Inter-island Ferry Oversight Task Force.

Dear Chairs Souki and Oshiro:

My name is *Matthew Cerizo* and I strongly support Hawaii Superferry. *Having used ocean ferries in Seattle, Costa Rica and the Philippines, I find them an excellent mode of transportation among island communities. I am really looking forward to visiting friends on Oahu. Furthermore, I believe it will enhance commercial activity among the citizens of Hawaii. Mainly us consumers should enjoy lower prices across the board.*

I have heard/read the anti superferry arguments. I believe they are naive and ignorant at best.

*Sincerely,
Matthew S. Cerizo
644 Pio Drive
Wailuku, HI 96793
808-242-9434*

Do You Yahoo!?
Tired of spam? Yahoo! Mail has the best spam protection around
<http://mail.yahoo.com>

House Testimony

From: David Buck [david@hawaiihomelistings.com]
Sent: Thursday, October 25, 2007 11:16 AM
To: House Record
Subject: Super Ferry

To Whom it May Concern,

I am a Hawaii resident that was born & raised here & am in strong support of the Super Ferry which would enable us to visit family on the outer islands at affordable rates, take our car, etc. It was also allow our family to visit us.

Mahalo,
David

David E. Buck (RA)
RE/MAX 808 Realty
3465 Waialae Ave., Suite 380
Honolulu, HI 96816
808-732-5400 Office Direct
808-371-3509 Cell
808-739-2808 Fax
david@hawaiihomelistings.com E-Mail
www.hawaiihomelistings.com Website

House Testimony

From: Steve Knight [steve@go-lanai.com]
Sent: Thursday, October 25, 2007 11:04 AM
To: House Record
Cc: elsa@mauichamber.com
Subject: I support the Hawaii Superferry...

HONORABLE CHAIRS SOUKI AND OSHIRO;

I CONTINUE SUPPORT THE HAWAII SUPERFERRY BECAUSE IT'S GOOD FOR BUSINESS AND OUR ECONOMY. IT PROVIDES BUSINESSES WITH ADDITIONAL VENUES FOR COMMERCE, TRANSPORTATION OPTIONS, AND COST SAVINGS, SO DESPERATELY NEEDED BY ALL BUSINESSES IN HAWAII. I BELIEVE THAT THIS VESSEL SHOULD BE ABLE TO OPERATE DURING THE ENVIRONMENTAL ASSESSMENT AND SUCH OPERATION SHOULD BE ALLOWED WITH REASONABLE REGULATION AND ENVIRONMENTAL MITIGATION MEASURES. THEREFORE, I SUPPORT THE HB 1 AND THE HAWAII SUPERFERRY. PLEASE DON'T LET THE VOCAL MINORITY WIN ON THIS IMPORTANT ISSUE THIS IS DEFINITELY WHAT IS NEEDED TO PRESERVE HAWAII'S BUSINESS IMAGE.

MOST SINCERELY,

STEVEN KNIGHT
PRESIDENT/CEO
EXPEDITIONS
MAUI-LANA'I FERRY

House Testimony

From: Kseagles@aol.com
Sent: Thursday, October 25, 2007 11:06 AM
To: House Record
Subject: Superferry - Maui
Attachments: 100_0528.jpg; 100_0542.jpg

Some of the environmental hypocrisy of Maui Co. residents

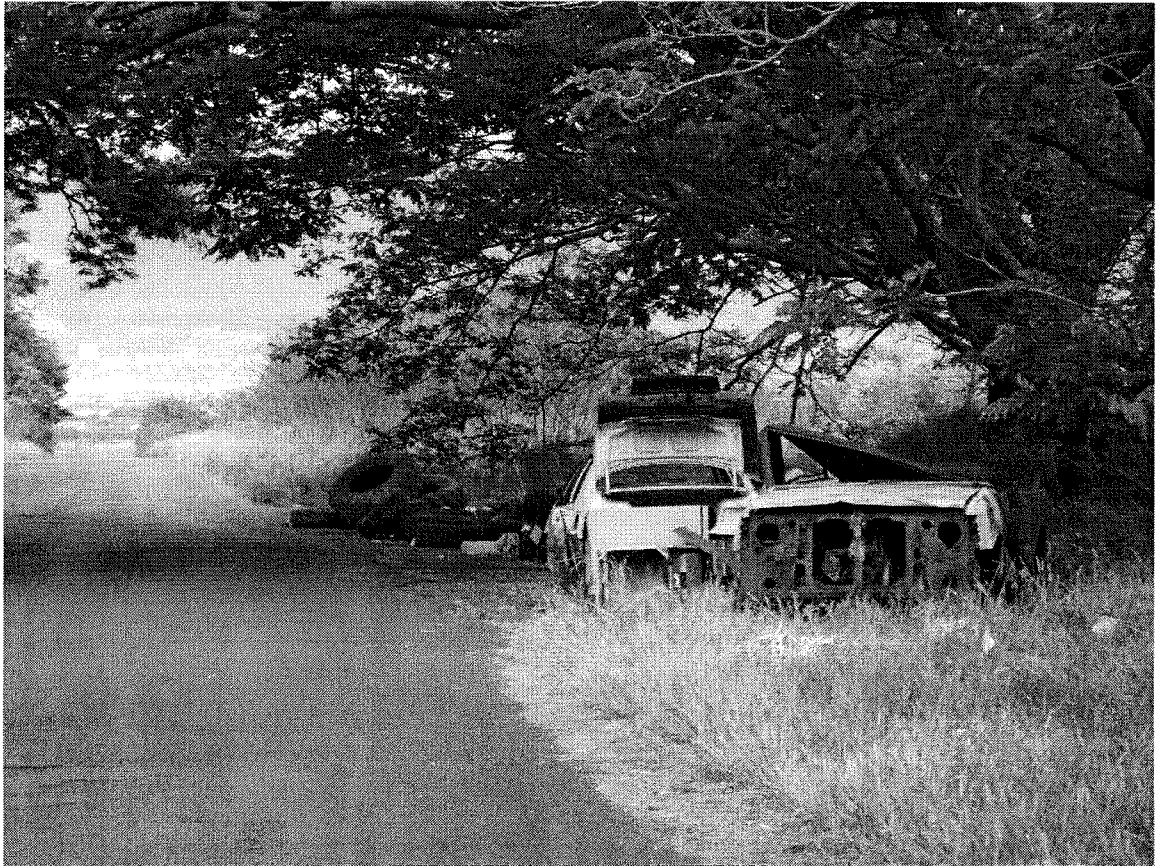
photo of exploded golf ball at Waihee Beach Park. Have picked up as many as 31 balls in one walk

photo cars sitting along roadside

other photos in part 2

Kathy Stump 773 Wailupe Dr., Wailuku, Maui 96793 244-6903

See what's new at AOL.com and [Make AOL Your Homepage](#).

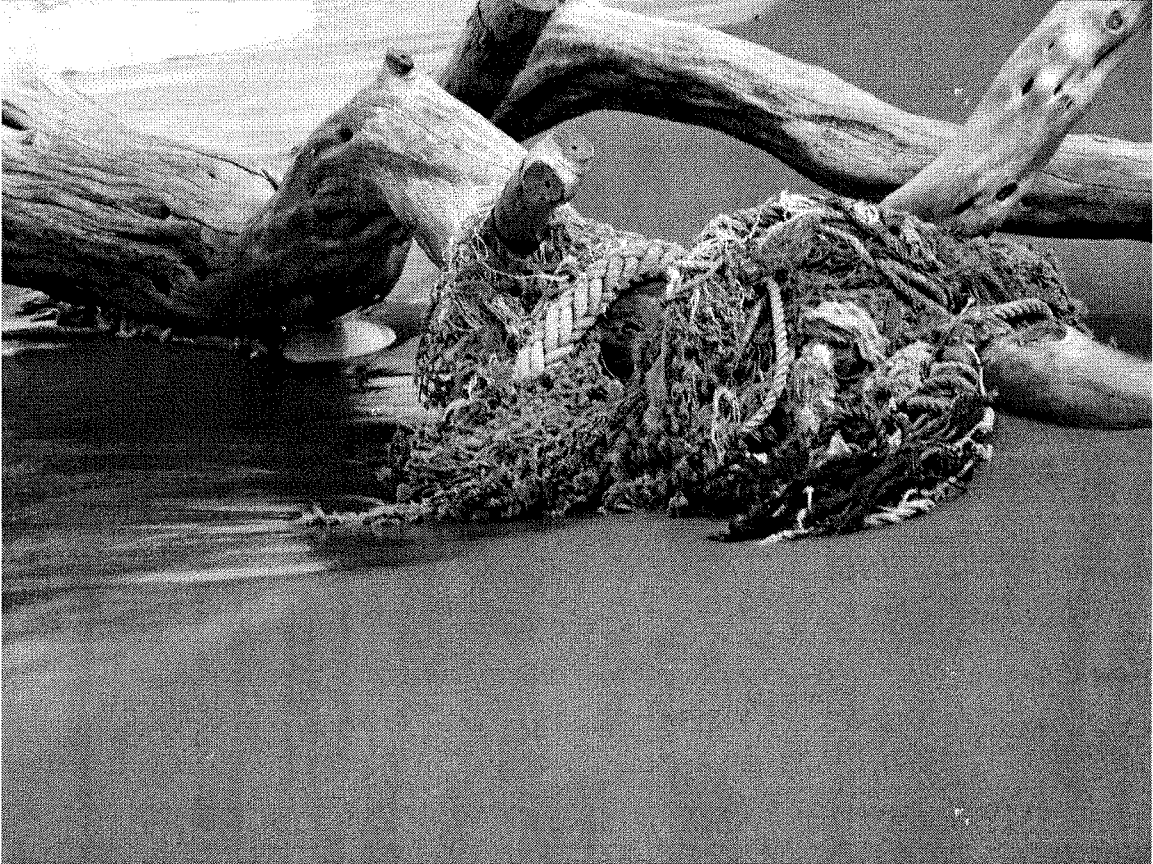
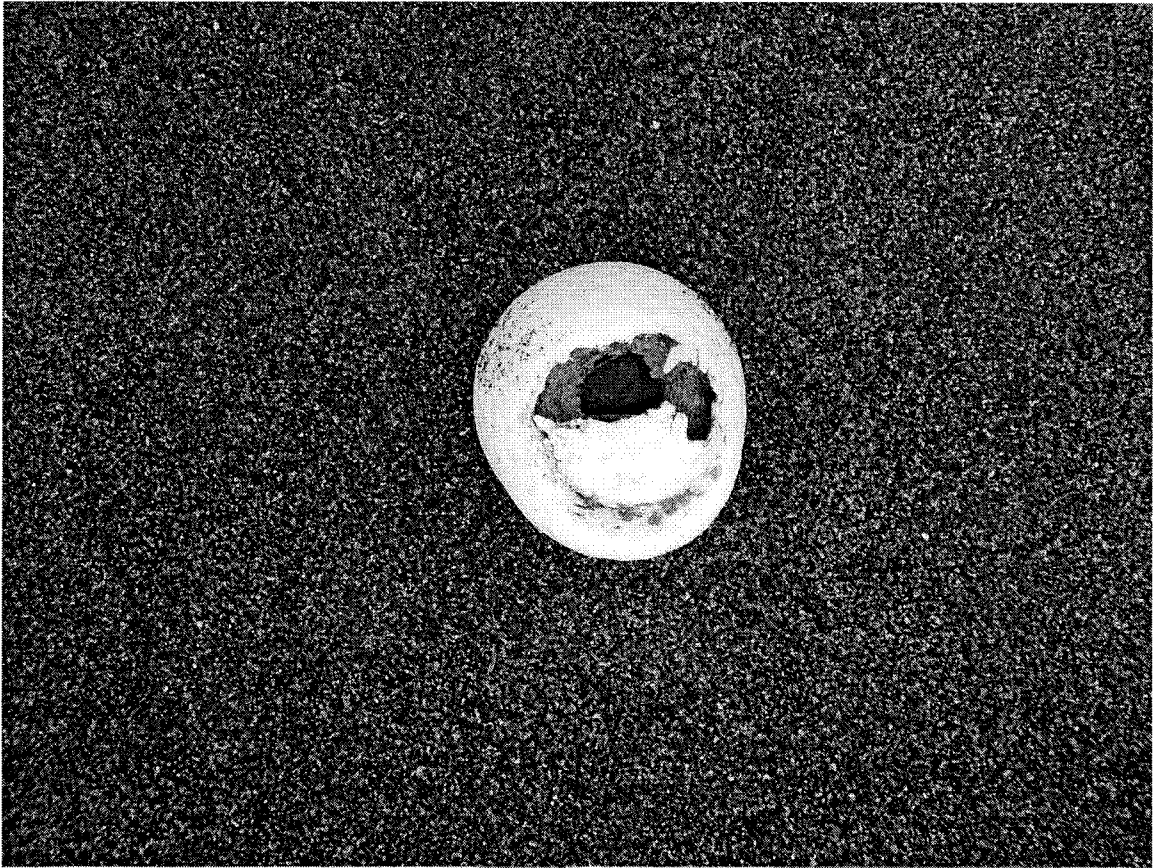


House Testimony

From: Kseagles@aol.com
Sent: Thursday, October 25, 2007 11:17 AM
To: House Record
Subject: Superferry Maui Part 2
Attachments: 100_0113.jpg; 100_0236.jpg

Environmental hypocrisy Kathy Stump

See what's new at AOL.com and [Make AOL Your Homepage](#).



House Testimony

From: andreapeltzer@netscape.net
Sent: Thursday, October 25, 2007 11:20 AM
To: House Record
Subject: Please protect whales and Hawaii's environment! Do not pass a special bill that would override the court's decision about the Hawaii Superferry!

Dear Legislators,

I am strongly opposed to Governor Lingle's proposed bill to overrule the court's decision about the Hawaii Superferry.

The law is clear. The Hawaii Superferry needs to have an Environmental Assessment before it begins operation in Hawaii. The thought that this could happen leads me to think that the Hawaii Supperferry has lined several government representatives pockets with gold. My confidence in our government will be lost if you don't do the right thing.

Please do not weaken our state's environmental laws to cater to one special interest and privately owned business. I urge you to stand by the court's decision. Please put Hawaii's environment first.

*Sincerely,
Andrea Peltzer
688 Kupilau Rd.
Kihei, HI 96753*

Check Out the new free AIM(R) Mail -- Unlimited storage and industry-leading spam and email virus protection.

House Testimony

From: Steve Carr [carrs003@hawaii.rr.com]
Sent: Wednesday, October 24, 2007 4:25 AM
To: House Record
Subject: SuperFerry

Respected Senators and Representatives:

I am in full support without exception the HSF. The economic gain and fast-tracking for commercial businesses and customers must not be hindered. I believe all the facts were in before any of the detractors organized, and we are allowing this very vocal minority stop the efforts for such a positive change the HSF will bring to all of Hawaii. Mahalo.
Steve Carr

10/25/2007

House Testimony

From: Shelly Nakasone [ShellyN@cbpacific.com]
Sent: Thursday, October 25, 2007 11:55 AM
To: House Record
Subject: In support of Hawaii Superferry

ATTN: House Committee on Transportation and House Committee on Finance

DATE: Thursday, October 25, 2007

TIME: 9:00 a.m. Auditorium, State Capitol

HB 1 RELATING TO TRANSPORTATION

Requires the Department of Transportation to perform an environmental impact statement (EIS) for certain improvements made to commercial harbors. Permits operation of large capacity ferry vessel company prior to completion of EIS upon meeting certain minimum conditions. Establishes a temporary Hawaii Inter-island Ferry Oversight Task Force.

Dear Chairs Souki and Oshiro:

My name is Shelly M. Nakasone and I strongly support Hawaii Superferry.

We need and want options for transportation. Hawaii Superferry is a novel & viable source, which more people than not support. Please listen to the majority & not simply to the vocal few who oppose this. Hawaii Superferry is good for Hawaii!

They were given the authority to go forward & spent \$\$\$\$ to do so. It is not their fault, nor should it be their loss that someone in the government made an error in giving that approval. It should be possible to use non-traditional means to cut through the red tape & make this transportation option available to operate & available for us to utilize. Please do what it necessary within your power to make this happen for all of us constituents that support the Hawaii Superferry.

Thank you for your consideration.

Respectfully,

Shelly M. Nakasone

95-1039 Loea St.

Mililani, HI 96789

(808)626-0076

shellyn@cbpacific.com

House Testimony

From: Mark Wilson [marktrek@mac.com]
Sent: Thursday, October 25, 2007 12:02 PM
To: House Record
Subject: SuperFerry

Aloha,

First of all, there should have been an environmental impact statement. But that was the state's fault, not SuperFerry.

I can not believe the anger. And it is backed back silly positions and reasoning.

One person on Maui said that this was like having a refrigerator with opihi and fish. But it is not his opihi, not his fish and not even his refrigerator. This is our state. I could just as easily rent a car as drive over to his fishing spot. Someone n Kauai said that it would be 266 cars coming on an already crowded situation. Does he really not know that the ferry will be going both ways? It can mean 266 cars leaving every day. And what of the person that wants to shop at, say Loews on Oahu. They could drive over, load up and return. Not have to air ship or wait for Young Brothers. They would have a choice.

And at some point, hopefully years away, there will be another Iniki. People with no homes or jobs could pack up what they still have and move or join relatives or friends on another island. More importantly, it would be easier for support items to get to needed victims.

Some environmentalists ask for the vehicles to be vacuumed. Okay. And then we must vacuum cars shipped by Young Brothers and Matson. No, they don't ask for that.

How about crates coming from the mainland and over seas. Are they opened, cleaned and vacuumed? No they only complain about what is on SuperFerry.

Why is it fine to have barges, cruise ships, planes and tourists from around the world come here with minimum inspection, but SuperFerry should not by sailing at all.

We don't make visitors from around the world wash seeds off of their shoes or pollen off of their hair and clothes, but the SuperFerry should not sail at all.

Why are worldwide visitors welcome, but neighbor-island friends and relatives being denied. Are you really saying that I am to welcome on your island if I want to come by SuperFerry?

One of the biggest users of SuperFerry will be neighbor island farmers that would no longer have to airship produce to Oahu. Why hurt neighbor island businesses.

Okay, let's not have interisland connections. Eliminate flights from the mainland that stop on Oahu and continue to the outer islands. Eliminate cargo transfers so you can be responsible for it yourself. In fact there should be no oil or gas shipments. Why should Oahu have to put up with the dirt and pollution? Build your own deep draft harbor. Build your own oil refinery. But, use your own tax dollars instead of being supported by the rest of the state.

There are going to be protesters in the harbors blocking SuperFerry? Why? For one half of one percent of what travels between the islands? As I have stated, this does not stop possible environmental problems. But most importantly. This has nothing to do with real problems from the rest of the world. It only effects our friends and neighbors in Hawaii. In other words, I see no Aloha in this.

Mahalo, Mark Wilson
www.BaliArtisans.com

10/25/2007

House Testimony

From: Ken Curtis [curtis@midpac.net]
Sent: Thursday, October 25, 2007 12:03 PM
To: House Record
Subject: Fwd: Hawaii Superferry

Subject: Hawaii Superferry

ATTN: House Committee on Transportation and House Committee on Finance

DATE: Thursday, October 25, 2007

TIME: 9:00 a.m. Auditorium, State Capitol

HB 1 RELATING TO TRANSPORTATION

Requires the Department of Transportation to perform an environmental impact statement (EIS) for certain improvements made to commercial harbors. Permits operation of large capacity ferry vessel company prior to completion of EIS upon meeting certain minimum conditions. Establishes a temporary Hawaii Inter-island Ferry Oversight Task Force.

Dear Chairs Souki and Oshiro:

I support Hawaii Superferry along with my husband for the following reasons:

1. The Hawaii Superferry has invested millions of dollars to give the people of Hawaii what they wanted--an option for inter island travel.
2. While the State of Hawaii SHOULD HAVE required an EA, and likely a resulting EIS, state officials were remiss in their duties. It is they who should be punished--not the Superferry.
3. It is entirely within the realm of state government to impose temporary restrictions which should appease the concerns of environmentalists. There is a vocal minority who opposes the Superferry without regard to environmental concerns.
4. If people oppose the Superferry, let them cast their economic vote in the marketplace. All people of Hawaii should have the option of choosing to NOT use the Superferry, if that is their decision.

Mahalo,

Marilyn Curtis

2993 Wawae Rd.

Kalaheo, Kauai, HI 96741

808-332-5393

House Testimony

From: dean flanders [dfland1138@msn.com]

Sent: Thursday, October 25, 2007 12:03 PM

To: House Testimony

ATTN: House Committee on Transportation and House Committee on Finance

DATE: Thursday, October 25, 2007

TIME: 9:00 a.m. Auditorium, State Capitol

HB 1 RELATING TO TRANSPORTATION

Requires the Department of Transportation to perform an environmental impact statement (EIS) for certain improvements made to commercial harbors. Permits operation of large capacity ferry vessel company prior to completion of EIS upon meeting certain minimum conditions. Establishes a temporary Hawaii Inter-island Ferry Oversight Task Force.

Dear Chairs Souki and Oshiro:

My name is *Dean Flanders* and I strongly support Hawaii Superferry.

10/25/2007

House Testimony

From: RACHEL.CAMBRA [RACHEL.CAMBRA@pruhawaii.com]

Sent: Thursday, October 25, 2007 12:17 PM

To: House Record

ATTN: House Committee on Transportation and House Committee on Finance

DATE: Thursday, October 25, 2007

TIME: 9:00 a.m. Auditorium, State Capitol

HB 1 RELATING TO TRANSPORTATION

Requires the Department of Transportation to perform an environmental impact statement (EIS) for certain improvements made to commercial harbors. Permits operation of large capacity ferry vessel company prior to completion of EIS upon meeting certain minimum conditions. Establishes a temporary Hawaii Inter-island Ferry Oversight Task Force.

Dear Chairs Souki and Oshiro:

My name is Rachel N. Cambra and I strongly support Hawaii Superferry.

I spend a lot of time traveling back and forth to the outer islands from Oahu and stay there for extended periods. How perfect for me to be able to bring my car with me. It certainly helps me and my family financially. The car rental businesses shouldn't lose any business because there's still tourism where the bulk of their business comes from anyway. It's another form of travel for those who does not like to fly due to their fears. Please keep the Superferry going.

Rachel

Rachel Cambra (RA, E-Certified)

Prudential Locations LLC

Cell: (808) 372-0314

Bus: (808) 738-8926

E-Fax: (808) 738-8716

rachel.cambra@pruhawaii.com

House Testimony

From: BRUNSKI655@aol.com
Sent: Thursday, October 25, 2007 12:22 PM
To: House Record
Subject: Hawaii Superferry

ATTN: House Committee on Transportation and House Committee on Finance
DATE: Thursday, October 25, 2007
TIME: 9:00 a.m. Auditorium, State Capitol

HB 1 RELATING TO TRANSPORTATION

Requires the Department of Transportation to perform an environmental impact statement (EIS) for certain improvements made to commercial harbors. Permits operation of large capacity ferry vessel company prior to completion of EIS upon meeting certain minimum conditions. Establishes a temporary Hawaii Inter-island Ferry Oversight Task Force.

Dear Chairs Souki and Oshiro:

My name is *David Chabriel* and I strongly support Hawaii Superferry.

We have been waiting for decades for another form of transportation between the islands. Ever since the days of the failure of Seaflite. Now it is here. Superferry. Please do not waste this chance. You are doing the right thing. The courts have failed us. Now is the time to do what you have to do to make the Superferry a reality in inter island transportation. 90% of polls show support for you and Superferry. Don't let us all down because of some radical "tree huggers". We live in the 21st century. The Hawaiian Islands are a state. They are not individual islands anymore. Please do what you need to do to get the Superferry in operation.

*Aloha and Mahalo, David Chabriel
655 Akoaoka Street, Kailua Hi. 96734, Ph # 261-4345*

See what's new at AOL.com and [Make AOL Your Homepage](#).

10/25/2007

House Testimony

From: Stan [mahiaijrs001@hawaii.rr.com]
Sent: Wednesday, October 24, 2007 1:50 AM
To: House Record
Cc: Stan
Subject: TESTIMONY SUBMISSION IN SUPPORT FOR THE HAWAII SUPERFERRY

ATTN: House Committee on Transportation and House Committee on Finance

DATE: Thursday, October 25, 2007

TIME: 9:00 A.M. Auditorium, State Capitol

HB 1 RELATING TO TRANSPORTATION

Requires the Department of Transportation to perform an environmental impact statement (EIS) for certain improvements made to commercial harbors. Permits operation of large capacity ferry vessel company prior to completion of EIS upon meeting certain minimum conditions. Establishes a temporary Hawaii Inter-island Ferry Oversight Task Force.

Dear Chairs Souki and Oshiro:

My name is **STANLEY MAHIAI JR.** and I strongly support Hawaii Superferry.

As it will provide me with an alternative transportation choice to travel interisland within the Stae of Hawaii.

I will be able to visit and stay with family, friends, and conduct personal business on the neighbor islands with my personal vehicle. It will save me on car rental and hotel accommodations expenses.

We Kamaaina, have waited a long time for such an alternative as the Hawaii Superferry.

I urge you to make the right decision to allow the Hawaii Superferry to do business at the same time an (EIS) Environmental Impact Statement is being done.

Mahalo for allowing me to submit this testimony in support of the Hawaii Superferry.

**91-1069 KOANIMAKANI STREET
KAPOLEI, O'AHU RESIDENT 96707
PHONE: 808-520-2388 RESIDENCE 808-386-9152 MOBILE CELL PHONE
EMAIL MAHIAIJRS001@HAWAII.RR.COM**

10/25/2007

House Testimony

From: kim usher [teriann1@hotmail.com]

Sent: Thursday, October 25, 2007 12:50 PM

To: House Record; info@mikegabbard.com; jntokuda@hotmail.com; Rep. Karen Awana; Rep. Della Belatti; Rep. Lyla B. Berg; Rep. Joe Bertram III; Rep. Blake Oshiro; Rep. Tom Brower; Rep. Rida Cabanilla; Rep. Kirk Caldwell; Rep. Mele Carroll; Rep. Jerry Chang; Rep. Corinne Ching; Rep. Pono Chong; Rep. Cindy Evans; Rep. Lynn Finnegan; Rep. Josh Green; Rep. Faye Hanohano; Rep. Sharon Har; Rep. Robert Herkes; Rep. Jon Karamatsu; Rep. Marilyn Lee; Rep. Sylvia Luke; Rep. Michael Magaoay; Rep. Joey Manahan; Rep. Barbara Marumoto; Rep. Angus McKelvey; Rep. Colleen Meyer; Rep. John Mizuno; Rep. Marcus Oshiro; Rep. Bob Nakasone; Rep. Scott Nishimoto; Rep. Kymberly Pine; Rep. Karl Rhoads; Rep. Roland Sagum; Rep. Scott Saiki; Rep. Maile Shimabukuro; Rep. Alex Sonson; Rep. Joseph Souki; Rep. K. Mark Takai; Rep. Dwight Takamine; Rep. Roy Takumi; Rep. Cynthia Thielen; Rep. James Tokioka; Rep. Clifton K. Tsuji; Rep. Glenn Wakai; Rep. Gene Ward

Thursday, October 25, 2007
 Kimberly Usher
 808-856-5735

Our Honored Elected Officials
 State Capitol of Hawaii

Aloha Dear Lady or Sir,

On Monday the 22nd of October, I stood before a panel of Hawaii's Elected officials and gave testimony. I gave from my heart the feelings swelled up from inside after hearing the other testimonies. I didn't want to repeat all the various arguments for the stand down until the EA for the ferry. Therefore, I went to personal issues with the ferry and the hazards of operation without an EA and EIS.

We need to know what the ferry has in store for us and become prepared for the arrival. It was a slap in the face that they came when they knew that a court case could not be filed until Monday after the Supreme Court Decision. And we all saw what happened then—the rocks and the confusion.

My first comment to the panel was about my illness that is affected by anything that can kill a plant or a bug. I have a condition where the sheaths that cover my nerve cells are destroyed by herbicides and pesticides. If you can imagine being skinned alive it's the same but on the inside. People have to dress and feed me. It takes 1½ years for the sheaths to regrow.

If there are consequences to the ferry bringing invasive species the way to control that problem is to spray poisons. Are we just going to contaminate everything in this way or what? The EA would address this, before it happens. For my health and the Island of Maui. I don't want to be so sick and with that terrible pain. There is no way to know if something has been sprayed with a poison. Need to know !

My other comment was about the Stryker Brigade. I grew up in the defense dept. industry—My father helped build NORAD, Kwajalein, I lived in Bangkok during the Vietnam war and other missions. I know the word ICBM and have spent my time watching even now the activities—like watching on the internet missiles taking off from Vandenberg—its really cool there is a camera on the missile too and you can watch until it explodes. When I was in Kwajalein in April of 1972 I was herded to the beach and told no pictures. I looked in the direction of where I knew Roi Namor was, knowing that a missile test was being conducted.

I could not see the horizon as where we stood was at the shoreline and there was a rock wall on the edge of the beach. Looking to the farthest cloud I could see far far away I suddenly saw clouds even further as 1/3rd of the sky lit up and made a backlight to other clouds even further. I believe I saw a nuclear explosion above ground. Huge amount of light filled the sky. I felt very small. In my mind I see Maui with the valley as the target as there are mountains to shield other areas. The more we involve ourselves with the military missions the more that becomes a reality. War has no consciences until after the fact.

10/25/2007

JUST LIKE THIS SUPERFERRY ISSUE CAN BECOME.
STOP IT NOW BEFORE THERE ARE CONSEQUENCES THAT CANNOT BE FIXED.

Mahalo and Aloha,
Kim Usher
856-5735

Windows Live Hotmail and Microsoft Office Outlook – together at last. [Get it now!](#)

House Testimony

From: Bonnie Bator [recallbherenow@hotmail.com]
Sent: Thursday, October 25, 2007 12:35 PM
To: House Record
Subject: HouseTestSpSess

5660 Keapana Rd
 Kapa`a, Hawai`i 96746

808-822-5547

25 October 2007

Dear State House Majority Leader
 Kirk Caldwell & Rep Hermina Morita and House Members:

Aloha! Mahalo for the opportunity to present SPECIAL SESSION testimony! My concerns regarding Hawaii Superferry are NUMEROUS!!
 Most IMPORTANT is the "Hidden Agenda" of Military use of the ferry; as reported in the *Pacific Business News*, April 8, 2005:

The following quote from an interview with John F. Lehman,
 (former Secretary of the Navy) in the *Pacific Business News* (April 8, 2005)

"As for the military being able to use it, there's a great advantage to being able to travel between Oahu and the training ranges on the Big Island. There's going to be regular usage by platoons of Stryker vehicles. Armored personnel carriers can travel as a unit and drive on to a ferry, the unit members can go into the passenger area that's set up so that it will be a conference or briefing area. These units can do training sessions on the way over. When they arrive at Kawaihae Harbor they can get into the Strykers and drive away. I would foresee units of three or five going at a time. That might take up room of 15 cars on board the ferry. It's a big advantage to the military. It makes it much cheaper and more efficient for them to train soldiers."

My second concern, is the issue of DU (Depleted Uranium).
 It's called "depleted" uranium, but it's radioactive and on impact and when burned it releases nano-particles of radioactive uranium into the environment.

Lastly, the Hawaii Super Ferry (HSF) is not above the Environmental 'Law of the Land'
 The Environmental Impact Statement (EIS) process was established to protect the `aina.

To allow the HSF to sail prior to completion of the EIS would be make the entire EIS process moot.

Thus, a horrific precedence would be set: opening Hawai`i Nei to ANY business endeavor to desecrate the Hawaiian Islands.

Mahalo Plenty for your time & consideration to preserve and protect our homeland...

Future generations will hold you in high regard for the pono (righteous) decision that you folk's conclude.

The life of the land be preserved and protected for future generations.

As a Grandmother of four (4) mo`opuna I thank you for their sake!!

Sincerely with ALOHA,

Bonnie P. Bator

10/25/2007

House Testimony

From: Deborah Notch [debbienotch@mac.com]
Sent: Thursday, October 25, 2007 1:09 PM
To: House Record
Subject: Please protect whales and Hawaii's environment! Do not pass a special bill that would override the court's decision about the Hawaii Superferry!

Dear Legislators,

I am strongly opposed to Governor Lingle's proposed bill to overrule the court's decision about the Hawaii Superferry.

The law is clear. The Hawaii Superferry needs to have an Environmental Assessment before it begins operation in Hawaii.

Please do not weaken our state's environmental laws to cater to one special interest and privately owned business. I urge you to stand by the court's decision. Please put Hawaii's environment first.

Sincerely,

Jeffrey and Deborah Notch
811 s. Kihei Rd. 1-C
Kihei, HI 96753

House Testimony

From: Wes Fong [wesfong@wing-wing.com]
Sent: Thursday, October 25, 2007 12:01 PM
To: House Record
Subject: Supper Ferry

ATTN: House Committee on Transportation and House Committee on Finance

DATE: Thursday, October 25, 2007

TIME: 9:00 a.m. Auditorium, State Capitol

HB 1 RELATING TO TRANSPORTATION

Requires the Department of Transportation to perform an environmental impact statement (EIS) for certain improvements made to commercial harbors. Permits operation of large capacity ferry vessel company prior to completion of EIS upon meeting certain minimum conditions. Establishes a temporary Hawaii Inter-island Ferry Oversight Task Force.

Dear Chairs Souki and Oshiro:

My name is *Wesley Fong* and I strongly support Hawaii Superferry.

As a small business owner in Honolulu, it will allow me to access other islands and offer our goods to other islands. The economic impact for the good of all islands will benefit from this Superferry.

Wesley Fong

501 Sumner Street -501

Honolulu, HI USA

96817

10/25/2007

House Testimony

From: CERIZO, GARRETT [GARRETTCERIZO@allstate.com]
Sent: Thursday, October 25, 2007 1:25 PM
To: House Record
Subject: Please legislate the Superferry into passage

Dear legislature,

The Superferry is a good thing, that can provide added growth and prosperity to our state. It is shameful that these radical justices have decided against the Superferry and the will of the people. The legislative body represents the people, which has correctly initiated the passage of the Superferry in the first place. Please have the follow through to not be tripped up by over-spoken radicals, and by justices willing to overstep there role.

Garrett Cerizo
30 Walaka St.
Kihei, HI 96753
808-757-0100

The Company reserves the right to review all e-mail. Your sending of e-mail is consent for the Company to review the content of your e-mail. Communicating via e-mail does not constitute an offer of coverage. Eligibility requirements and coverages can vary by state. Allstate coverages are subject to the policy terms, conditions, and exclusions detailed in the insurance contract issued at purchase. Quotations on insurance are provided as estimates and are not an insurance contract.

House Testimony

From: LEHUA MCCOLGAN [liwai@hawaiiantel.net]
Sent: Thursday, October 25, 2007 2:07 PM
To: House Record
Subject: Fw:

----- Original Message -----

From: LEHUA MCCOLGAN
To: testimony@capitol.hawaii.gov
Sent: Wednesday, October 24, 2007 2:28 PM

To: House Committee on Transportation and House Committee on Finance
Date: Thursday, October 25, 2007
Time: 9:00 a.m. Auditorium, State Capitol

HD1 RELATING TO TRANSPORTATION

Dear Chairs Souki and Oshiro

I, Lehua McColgan, wholeheartly support the bill to permit the interisland ferry services while an environmental impact is being conducted.

This service will benefit many of us locals that travel between the islands to visit with family and the offering of makana to our families outside of the island we live in. Many of us have ohana residing on the other islands that cannot make the trip often to Honolulu, because of cost, time involved, family at home that cannot travel, care of animals, etc. With the ferry system, we will be able to take our automobiles, not having to worry how we will get around the island once arriving.

At times our ohana also need to attend schools here on Oahu, and need to return home with family as necessary. Many of the Ohana also are employed on other islands, away from their immediate family, and wish to return to their island and join their families on weekends and holidays.

We here on Oahu would never think of not letting them back on Oahu, remember all the islands are ONE state. There should be no restriction for any one individual from any island to travel as they please. All in all, it will benefit our local people tremendously, financially, timelines, and always bringing our ohana closer to each other with this additional mode of traveling.

Let's get with the advancement of life and not live in the past!

Mahalo for allowing me to present my mana'o of the ferry system.

Kupuna Lehua McColgan

10/25/2007

KUPUNA LEHUA MCCOLGAN
1355 8TH AVE.
HONOLULU, HI 96816
(808) 734-5490

House Testimony

From: Darla Moe [darlamoe888@msn.com]
Sent: Thursday, October 25, 2007 2:17 PM
To: House Record
Subject: IN STRONG SUPPORT OF THE SUPERFERRY

ALOHA,

OUR WHOLE FAMILY ARE IN SUPPORT OF THE SUPERFERRY. HAWAII IS SO UNIQUE WE WANT TO PRESERVE THE BEAUTY BUT AT THE SAME TIME WE ALSO NEED ALTERNATIVE MEANS OF TRANSPORTATION IN TRAVELING (NOT ONLY WITH AIRPLANES) WE CONSTANTLY TRAVEL TO THE INTER-ISLANDS VISITING WITH OUR FAMILY AND FRIENDS. MY SON WHO IS A SURFER/BODY BOARDER CAN BRING ALL HIS SPORTS GEAR IN OUR CAR/VAN IS VERY CONVENIENT AND CHEAPER.

TOURISTS WILL BE PLEASED SEEING AND RIDING IN OUR NEW SUPERFERRY HERE IN HAWAII. THIS NEW ATTRACTION WILL BE A BIG PLUS IN OUR TOURISM INDUSTRY. BUSINESS ARE LOOKING FORWARD OF THIS ALTERNATIVE TRANSPORTATION TO TRANSPORT THEIR GOODS. BIG ORGANIZATIONS AND SPORTS PEOPLE COMPETING INTER-ISLAND WILL BE SERVED WELL WITH THE SUPERFERRY ESPECIALLY WHEN THEY CAN BRING ALL THEIR BULKY/HEAVY STUFF. IT WILL BE SO MUCH FUN TRAVELING LEISURELY WITH FAMILY AND FRIENDS IN THE SUPERFERRY WHILE ENJOYING ALL THE COMFORTS IN IT COMPARED TO AIRPLANES THAT CANNOT GIVE SO MUCH LEG ROOM.

WE ARE BEING WATCHED BY MAINLAND PEOPLE AND BUSINESSES ON HOW THIS PROBLEM WILL BE RESOLVED. PLEASE DON'T LET THE VOCAL MINORITY TO STOP THIS GREAT OPPORTUNITY. PLEASE LET THE SUPERFERRY BE A PART OF THE BEAUTIFUL ISLAND OF HAWAII.

THANK YOU FOR LISTENING AND CONSIDERING OUR FAMILY'S STAND ON THE SUPERFERRY. MUCH MAHALO

DARLA & WALTER MOE
HCR 1 BOX 5029
KEAAU, HI 96749
Tel. (808) 966-5420

email: darlamoe88@msn.com
wmoe21@hotmail.com

Help yourself to FREE treats served up daily at the Messenger Café. Stop by today.
http://www.cafemessenger.com/info/info_sweetstuff2.html?ocid=TXT_TAGLM_OctWLtagline

House Testimony

From: AnJ [jajmeisenzimmer@yahoo.com]
Sent: Thursday, October 25, 2007 2:15 PM
To: House Record
Subject: House Committee on Transportation and House Committee on Finance - Super Ferry

Dear Chairs Souki and Oshiro:

My name is Jay Adam Eisenzimmer, and I strongly support Hawaii Superferry.

I believe the Super Ferry is a positive contribution to the islands. It provides an alternative to the single line of transportation. Professionally we send work vans and personnel to all islands for work. The Super Ferry would allow us to cut down on costs, when transporting. Personally, it would be a great adventure, to ride a ship with my family and car to other islands for day or weekend trips. With transportation and the growing size of the islands, we need alternate ways of transportation.

*Jay A. Eisenzimmer
91-578 Puhilaka Place
Ewa Beach, Hawaii 96706
(808) 780-3716*

Eisenzimmer's
91-578 Puhilaka Place
Ewa Beach, Hawaii 96706
(A) (808) 780-3716 or (J) (808) 479-6702
email: jajmeisenzimmer@yahoo.com

Navy: <http://navy.togetherweserved.com/usn/servlet/tws.webapp.WebApp?cmd=Home>

MySpace: <http://www.myspace.com/jajmeisenzimmer>

Do You Yahoo!?

Tired of spam? Yahoo! Mail has the best spam protection around
<http://mail.yahoo.com>

10/25/2007