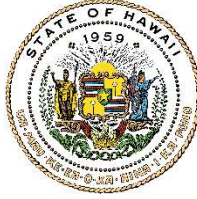


JOSH GREEN, M.D.
GOVERNOR | KE KIA'ĀINA

SYLVIA LUKE
LIEUTENANT GOVERNOR | KA HOPE KIA'ĀINA



DEPT. COMM. NO. 114

DAWN N.S. CHANG
CHAIRPERSON
BOARD OF LAND AND NATURAL RESOURCES
COMMISSION ON WATER RESOURCE
MANAGEMENT

RYAN K.P. KANAKA'OLE
FIRST DEPUTY

CIARA W.K. KAHAHANE
DEPUTY DIRECTOR - WATER

AQUATIC RESOURCES
BOATING AND OCEAN RECREATION
BUREAU OF CONVEYANCES
COMMISSION ON WATER RESOURCE
MANAGEMENT
CONSERVATION AND COASTAL LANDS
CONSERVATION AND RESOURCES
ENFORCEMENT
ENGINEERING
FORESTRY AND WILDLIFE
HISTORIC PRESERVATION
KAHOOLAWE ISLAND RESERVE COMMISSION
LAND
STATE PARKS

STATE OF HAWAII | KA MOKU'ĀINA 'O HAWAI'I
DEPARTMENT OF LAND AND NATURAL RESOURCES
KA 'OIHANA KUMUWAIWAI 'ĀINA

P.O. BOX 621
HONOLULU, HAWAII 96809

December 13, 2024

The Honorable Ronald D. Kouchi,
President
and Members of the Senate
Thirty-Third State Legislature
State Capitol, Room 409
Honolulu, Hawaii 96813

The Honorable Nadine K. Nakamura
Speaker
and Members of the House of Representatives
Thirty-Third State Legislature
State Capitol, Room 431
Honolulu, Hawaii 96813

Dear President Kouchi, Speaker Nakamura, and Members of the Legislature:

For your information and consideration, I am transmitting a copy of Relating to the Forest Stewardship Program report as required by Section 195F-6, Hawaii Revised Statutes (HRS). In accordance with Section 93-16, HRS, a copy of this report has been transmitted to the Legislative Reference Bureau and the report may be viewed electronically at <https://files.hawaii.gov/dlnr/reports-to-the-legislature/2025/FW25-Forest-Stewardship-Rpt-FY24.pdf>.

Sincerely,

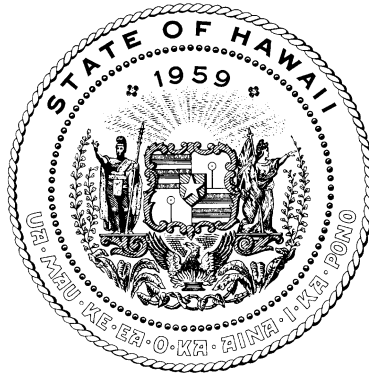
A handwritten signature in black ink, appearing to be "Dawn N.S. Chang".

DAWN N.S. CHANG
Chairperson

Enclosure

**REPORT TO THE THIRTY-THIRD LEGISLATURE
STATE OF HAWAI‘I
2025 REGULAR SESSION**

RELATING TO THE FOREST STEWARDSHIP PROGRAM



Prepared by

THE STATE OF HAWAI‘I
DEPARTMENT OF LAND AND NATURAL RESOURCES
DIVISION OF FORESTRY AND WILDLIFE

In response to Section 195F-6, Hawai‘i Revised Statutes

Honolulu, Hawai‘i
December 2024

RELATING TO THE FOREST STEWARDSHIP PROGRAM

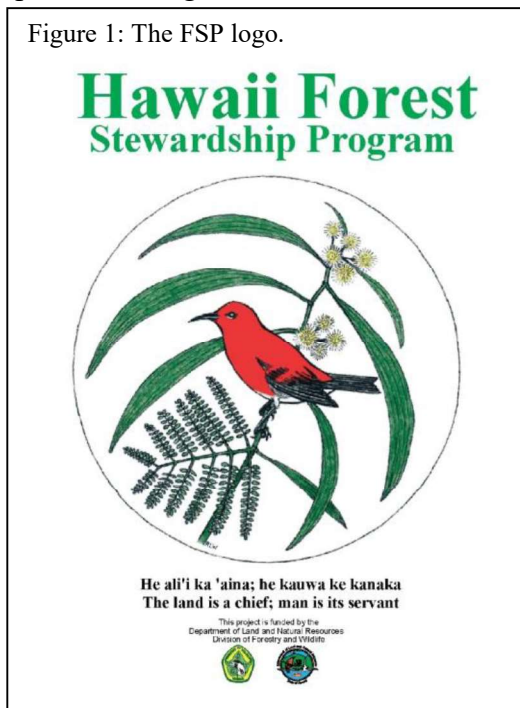
PURPOSE

This report complies with Section 195F-6, Hawai'i Revised Statutes (HRS), and covers topics relating to forest management through the Forest Stewardship Program (FSP) and associated programs for private landowners; management of the Forest Reserve System (FRS); and the status of the Forest Stewardship Special Fund within the Department of Land and Natural Resources (Department). The purpose of Chapter 195F, HRS, is to assist private landowners, including long-term leaseholders, in managing, protecting, and restoring essential watersheds, native vegetation, timber resources, fish and wildlife habitats, rare and endangered plants, and promote forestry activities on forested or formerly forested lands throughout the State. Further, Section 195F-4, HRS, allows the Department to collect fees for forest products, seedling sales, imposition of fines or penalties, and other products and services derived from forest reserves to support the management of the FRS. This report covers Fiscal Year (FY) 2024, from July 1, 2023, to June 30, 2024.

BACKGROUND OF THE HAWAI'I FOREST STEWARDSHIP PROGRAM

The FSP became effective in July 1991 through the passage of Act 327, Session Laws of Hawai'i (SLH) 1991. The Act authorized the Department to provide state funds to technically and financially assist private landowners and managers in protecting, managing, and restoring essential forest resources. Act 195, SLH 1993, and Act 152, SLH 2001, established a dedicated funding source for FSP as a percentage of annual Conveyance Tax revenues that were deposited into the Natural Area Reserve Fund and then disbursed by the Department to the Forest Stewardship Fund pursuant to Section 247-7, HRS. Act 084, SLH 2015 removed this dedicated funding source but provided for general fund allocations to support the program.

Figure 1: The FSP logo.



Act 221 SLH 2021 amended Chapter 195F, HRS, to modify program requirements to allow long-term leaseholders to participate in the program, increase cost-share support from 50% to 75% for the development of forest stewardship management plans, allow non-timber forest products to qualify and modernizes eligibility criteria related to native forest protection and management. These amendments will require changes to Hawai'i Administrative Rules (HAR) 13-109, which the Department is currently updating.

The Department's Division of Forestry and Wildlife (Division) implements the FSP with the oversight of the Forest Stewardship Advisory Committee, a diverse group of 13 natural resource and forestry experts. The FSP helps private landowners or long-term leaseholders restore and responsibly manage important forest resources that provide vital socioeconomic and environmental benefits. Most of Hawaii's forests (66%

or 1,155,000 acres of Hawaii's 1,748,000 acres of forest) are privately owned and managed. Public-private partnerships such as FSP are essential to the health of Hawaii's forests and the public benefits they provide.

The FSP encourages the conservation of existing native forests and the reforestation of degraded lands and provides support for establishing forest production systems. With the decline of Hawaii's agricultural industries, including sugarcane and pineapple, FSP provides an opportunity to stimulate investment in forestry to provide an economically viable agricultural land-use alternative and to encourage economic diversification. The FSP provides options for landowners to keep their land in production while supplying Hawaii's rural communities with a source of income, providing locally grown products and energy, reducing Hawaii's dependence on imported goods, and contributing to environmental benefits, such as clean water and native wildlife habitat.

The primary goals of the FSP:



- Watershed protection
- Native forest restoration and conservation
- Forest product development, including non-timber forest products and high-value commercial timber
- Threatened and endangered species recovery
- Environmental education and community outreach
- Restoration of formerly fallow and degraded agricultural lands
- Establishment of agroforestry systems

The Forest Stewardship Fund, Section 195F-4, HRS, collects money from selling products or services on FRS lands, per Act 144 SLH 1999 and Act 174 SLH 2006. The Fund supports the management of public forest reserves and state timber management areas, as well as environmental education and training programs for sustainable forestry management. Under Act 084, SLH 2015, the Forest Stewardship Fund continues to serve as the repository of forest product revenue but no longer provides financial support for participants in the FSP.

FOREST STEWARDSHIP PROGRAM ACTIVITIES

Since 1990, the FSP has helped **77 private landowners** sustainably manage **44,164 acres** of forested lands (4% of private forest land) through cost-share assistance for FSP management plan development and implementation of management practices over ten years. Management practices include tree planting, fencing, weed control, wildfire protection, and other activities to benefit the establishment and protection of watershed forests. **Exhibit A** provides a summary of all FSP projects to date. Currently, ten projects are implementing their plans through cost-share agreements, 31 have approved management plans implemented using other funding sources, and 36 are in the post-10-year maintenance phase.

Private landowners with approved FSP plans can also seek financial assistance from other federal and state assistance programs to implement their plans. In many cases, FSP projects use a variety of programs to help implement their management plans, targeting each program for its specific objectives and goals (e.g., Natural Resource Conservation Service Environmental Quality Incentives Program, U.S. Fish and Wildlife Service Partners Program). The Division has recently supported several FSP projects through the NRCS Regional Cooperative Partnership Program. The Division received an award of over \$5 million in FY24 to support landowners in restoring private

forest land across the state. Cost-share assistance from FSP, however, is critical as it is the most comprehensive and Hawaii-specific assistance program available.

Figure 2: The Forest Stewardship Advisory Committee, a diverse group of 13 forestry experts provides oversight to the FSP. Photo from Committee site visit to Kaalea Koa Forest Stewardship Project (Kaneohe, O‘ahu).



This is significant, given the program's small budget and staff resources (two part-time federally supported employees (25% FTE and 50% FTE) and one FTE state-funded employee). The Department strives to reach and engage with landowners, including **approximately 40 different landowners** and communities, during FY24, primarily through field visits. The U.S. Forest Service has provided over \$1.6 million to FSP over the last ten years to support state staff, management planning assistance, and support for forest management.

The Department has used **\$7,218,066** in state funds for forest management under FSP agreements spanning ten or more years. Since 1990, this program has **leveraged \$11,006,756 in private funds** as a direct match for sustainable forest management. The total cost to the State for this program is **\$163 per acre for ten or more years of sustainable forest management** – making the FSP one of the best investments in forestland management in Hawai‘i.

Currently, 258 landowners or landowner representatives are on the FSP email list of people interested in participating in the program. With extremely high interest from landowners, there is

significant room to increase the management of important private forests if additional funding were provided for the program. Due to overall forestry program budget cuts, no new FSP projects were funded for implementation (via 10-year cost-share agreements) over the last three fiscal years. Encumbered funds in FY24 supported previously existing 10-year FSP agreements.

Most FSP participants would not have been able to pursue their sustainable and often innovative land-use objectives without technical and financial assistance through this program. The program supports other recent cross-sector initiatives and partnerships, including freshwater security, watershed protection, carbon neutrality, biosecurity, invasive species control, and native species restoration. For example, the FSP has engaged with five private landowners within the State of Hawai‘i Watershed Partnership Program to develop Forest Stewardship management plans that encourage the active participation and management of private lands within the partnerships.

The Department continues to identify methods to address the needs of landowners and the public. The FSP Handbook and links to important forest informational resources and partner programs are accessible from FSP’s web page: <http://dlnr.hawaii.gov/forestry/lap/fsp/>

Figure 3: Mauna Kea Forest Stewardship Project (Kamuela Hawai‘i). Parker Ranch completed a Forest Stewardship Program management plan in 2023 for reforestation of over 3,000 acres of Parker Ranch lands below the State’s Mauna Kea Forest Reserve and adjacent to the State’s Kaohe Palila Mitigation Area.



Conservation Reserve Enhancement Program

The Hawai‘i Conservation Reserve Enhancement Program (CREP) was authorized in 2009 as an initiative under the FSP to expand financial assistance to landowners for conservation practices to restore degraded agricultural lands and protect sensitive habitats. 30 project agreements have been executed covering 1,286 acres, representing a significant increase in native forest cover and

reduced soil erosion. In FY24, \$58,815 of Federal USDA funds were matched by \$16,650, a 4.6:1 ratio of federal to state dollars expended to support the program. The Division and USDA terminated the CREP agreement in 2020 due to changes to the 2018 farm bill, which made the program requirements more restrictive and reduced financial incentives for landowners to participate in the program. However, the Division continues to implement existing contracts.

Forest Legacy Program and Forest Reserve System Land Acquisition

The FSP is aligned with other federal programs, including support for the development of management plans for acquisitions through the USDA-Forest Service Forest Legacy Program. The Department completed three fee acquisition projects and added 6,573 acres to the FRS (Helemano on O‘ahu, Kamehamenui Forest and Pohakea on Maui). The Department currently monitors six conservation easements (protecting 21,119 acres in perpetuity) and one fee-title acquisition for 25,886 acres at Wao Kele O Puna Forest Reserve stewarded by the Office of Hawaiian Affairs. The Department is working to complete three fee title acquisitions for addition to public lands:

- East Maui Fee Acquisition (332 acres), Hana, Maui
- Kāne‘ohe Pali Fee Acquisition (948 acres), Kāne‘ohe, Oahu
- Maunawili Forest Fee Acquisition (672 acres), Maunawili, Oahu

Figure 4: In FY24 the Division acquired 257 acres at Pohakea, Maui, which will be added to the FRS. The Division will restore habitat and manage wildfire to prevent erosion that damages marine environments and manage the historic Lahaina Pali Trail, for public recreation.



FOREST STEWARDSHIP PLANNING, MANAGEMENT, AND ACTIONS

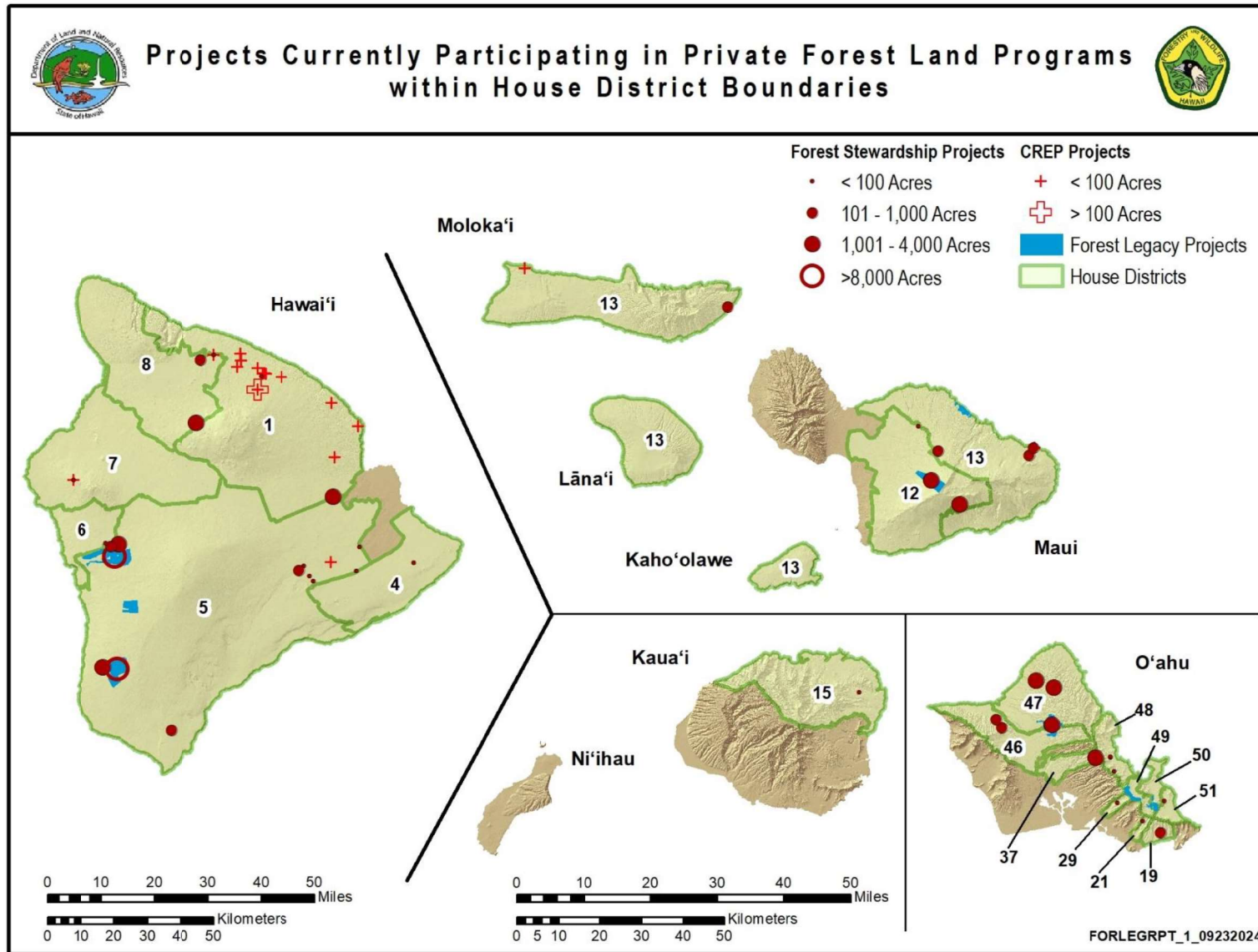
The **State of Hawai‘i Forest Action Plan** identifies the State’s landscape-level forestry priority areas, resources, threats, and issues and is available on the Department’s web page: <http://dlnr.hawaii.gov/forestry/info/fap/>. U.S. Forest Service federal funding is based on Forest Action Plan priorities. This includes the Landscape Scale Restoration grant program, in which the Department successfully competes annually for funds, as well as the 2022 Bipartisan Infrastructure

Law funding, which supports projects under several Division programs (Forest Stewardship, Rural Forestry Assistance, Forest Health and Urban and Community Forestry). FY24 Inflation Reduction Act funds were awarded to the Division to develop an outreach and technical assistance plan for underserved landowners and for capacity building for the Forest Legacy Program.

Figure 5: The Division is working on due diligence for the Maunawili Forest Fee Acquisition (672 acres), Maunawili, Oahu. This project was awarded \$7 million in state CIP funding in FY24.

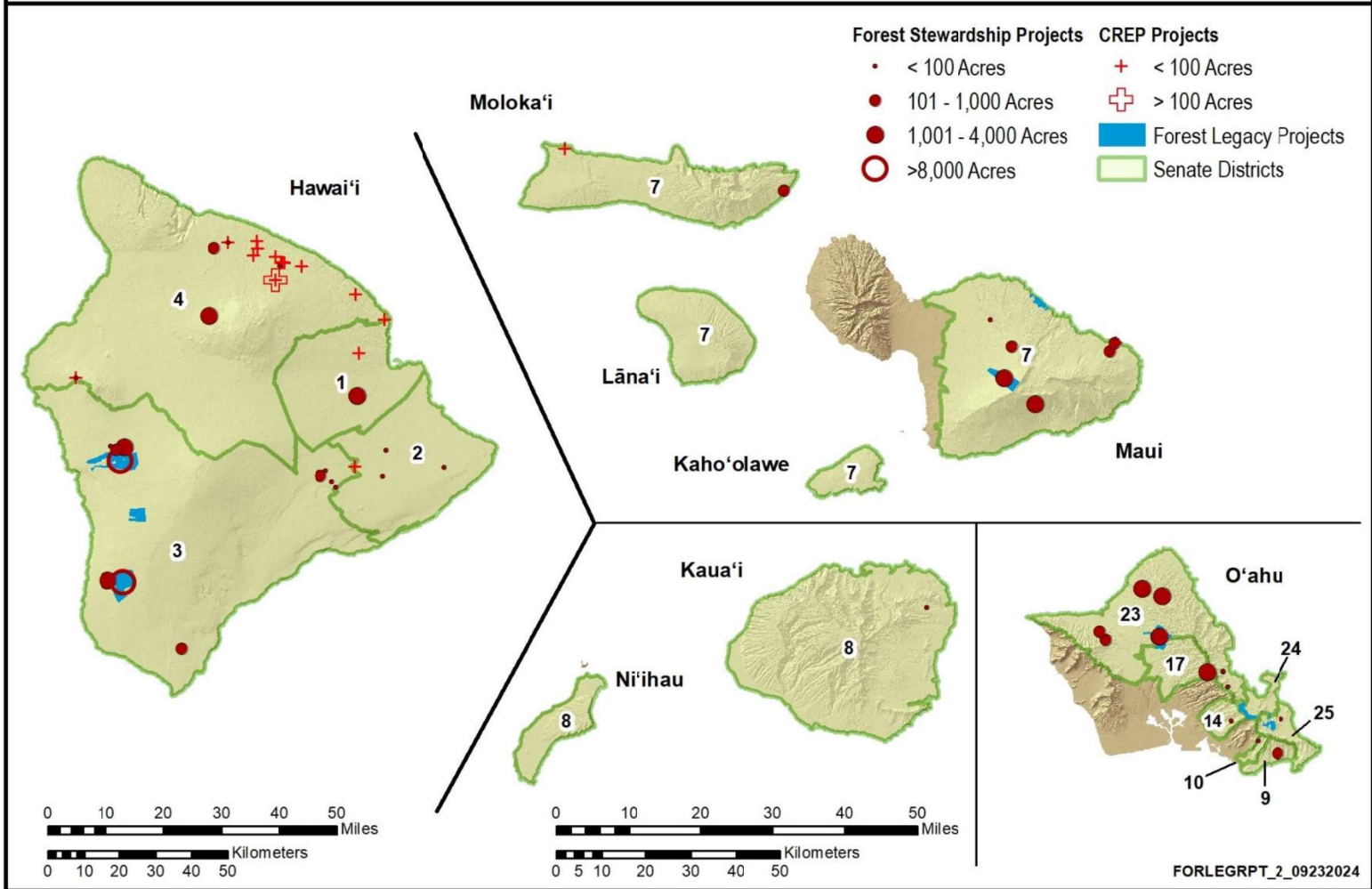


Figure 6: Forest Stewardship, CREP and Forest Legacy Projects (Senate/House Districts)





Projects Currently Participating in Private Forest Land Programs within Senate District Boundaries



STATE FOREST RESERVE SYSTEM REVENUES

Act 144 (SLH 1999) and Act 174 (SLH 2006), with Section 183-16, HRS, provide that revenue generated or accrued from the Forest Reserve System (FRS) be deposited into the Forest Stewardship Fund. Currently, revenue generated is derived from camping fees, nursery sales, various permits, leases, timber, and the sale of forest products. Table 1 below summarizes deposits of revenue generated from the FRS from July 1, 2023, to June 30, 2024.

Table 2. Deposits of Revenue into the Forest Stewardship Fund by District

Location	Amount
Administrative Office	\$15,037
O‘ahu	\$297,775
Kauai	\$34,126
Maui	\$3,553
<u>Hawai‘i</u>	<u>\$245,412</u>
Total	\$598,885

The primary sources of revenue were leases and permits (\$130,781), plant nursery sales (\$209,233), camping fees (\$75,399), and forest product sales (\$11,702). Overall revenue is stable, but nurseries' sales increased in FY24 due to reforestation efforts on private and leased lands.

Future revenue growth opportunities from the FRS include potential markets for emerging ecosystem services (such as for carbon), timber sales/commercial forest production – particularly in-state sales, and other compatible commercial land-use agreements. Trees are one of the most effective tools in capturing and storing carbon dioxide and thus play an essential role in mitigating climate change. The Division continues to move forward with its small-scale, pilot carbon offset project at the Kahikinui Forest Reserve and Nakula Natural Area Reserve to reforest the slopes of leeward Haleakala. Carbon sequestered at this site is expected to prove the concept is feasible in Hawai‘i, given the new methodology used by international carbon verification bodies. Once this project is verified, the Division anticipates adding additional reforestation projects with a carbon component across other lands. In addition, markets are being explored to find ways to sell timber found in the state’s Timber Management Areas. The lack of processing capacity and markets for the less valuable trees makes harvesting them challenging as the cost of operations exceeds the product revenue. In addition, there are no markets available for much of the fiber.

Funds from the Forest Stewardship Fund were used to subsidize a fraction of the costs for managing the full suite of responsibilities of the FRS. Additional funds are needed to manage camping facilities, tree planting, watershed protection/fences, invasive plant and animal control, threatened and endangered species habitat protection, and nursery and seed storage. In addition, there are miles of remote roads, trails, and boundary lines that need upkeep. The forestry program monitors hundreds of kiosks, gates, and fences. With over 680,000 acres within the FRS, the annual revenue generated represents less than 1% of the funds needed to cover the costs associated with these land management activities.

The Division has received USFS wood innovation grants to explore innovative wood use. The Hawai'i Wood Utilization Team (HWUT) was formed many years ago to find new pathways for local wood markets. One of the team's projects was to undertake a demonstration project to design and build an Accessory Dwelling Unit that meets the City and County of Honolulu's permitting requirements using species of locally grown and processed wood materials. This project is federally funded under the U.S. Forest Service's Wood Innovation grant designed to increase market awareness of Hawaii's forest resources. The ADU is finally being built and will be displayed in FY24/25. The long-term vision is to use the project to generate more interest in using local timber with the added benefits of procuring wood from our local economy, expanding demand for local products, and supporting local businesses. An additional U.S Forest Service grant will support public education around sustainable forestry practices, demand, and a chain of custody program within the State. Local wood use, where and when possible, is a win for Hawai'i and should be pursued at all levels of our economy.

State of Hawaii Tree Nurseries and Seed Storage Development

The Division is keen to expand seed production, collection, propagation, and storage capacities to expand reforestation abilities, primarily to mitigate damage to Hawaii's forests from wildfire or other disasters and to expand its ability to reforest areas over the next decade. The department maintains nurseries to support state reforestation projects and to provide plant seedlings for sale to public landowners interested in expanding trees on their lands.

The Division seeks to establish a position that would oversee nursery investments, production standards, and strategy statewide to ensure that DOFAW continues producing reliable and affordable seedlings for tree planting initiatives. A new 2023-2025 revegetation grant provided by the U.S. Forest Service under the Bipartisan Infrastructure Legislation has provided funds to develop recommendations for the state nursery expansion. The draft report is under review, and a set of convenings and trainings will occur in 2025 to share the results and move toward a new vision for nursery expansion.

A total of 95,362 seedlings were produced and 85,749 seedlings distributed by the state nurseries between July 1, 2023, and June 30, 2024, with most plants produced for state reforestation efforts:

- Waimea-Kamuela State Tree Nursery produced 88,396 seedlings and distributed 82,011 seedlings.
- Hilo Branch Nursery produced 180 seedlings.
- Maui Branch Nursery did not produce or distribute seedlings (nursery under construction).
- Oahu Branch Nursery produced 4,489 seedlings and distributed 3,063 seedlings.
- Kauai Branch Nursery produced 2297 seedlings and distributed 675 seedlings.

State Forest Reserve System (FRS)

The Forest Reserve System is managed under the guidance of the Hawai'i State Constitution, HRS (Chapter 183), and Hawai'i Administrative Rules (Chapter 104). Through these directives, the Department focuses its resources on protecting, managing, restoring, and monitoring the FRS's natural resources.

In February 2022, the Department launched a new platform for personal-use collections and commercial harvesting permits. Individuals wishing to collect foliage, fruit, trees, or other items

from the FRS can now apply for permits through an easy-to-use online system. The new platform uses a map interface to allow users to select a collection area geographically. Reviewing and approving permit applications is done digitally, resulting in a faster turnaround time. In FY24, the Division issued 733 online permits to the public.

The Division is currently working on management plans for forest reserves across the state including Pua‘ahala (Moloka‘i Forest Reserve), Makawao Forest Reserve (Maui), and South Kona Forest Reserve (Hawai‘i Island). In FY24, the Kapāpala Koa Canoe Management Area (Ka‘u Forest Reserve – Hawai‘i) and the Kīpahulu Forest Reserve (Maui) were completed and approved by the Board of Land and Natural Resources. The Division continues to develop online digital platforms to engage people in learning about and contributing to the planning process. Using the state’s digital mapping system as a foundation, the public and stakeholders can explore engaging virtual information guides describing forest reserve history, natural resources, threats, public uses, and proposed management and priorities for the area. The public can also participate in online community surveys and find information on submitting comments integrated into the planning process.

Overall, the Division has continued to support responsible resource management on forested lands, manage infrastructure, and ensure access to the FRS (including roads, gates, and boundary lines) so that other related programs can access the forest. In addition, the program explores the efficient uses and revenue opportunities for our forest resources.

Kaulunani Urban and Community Forestry Program

In FY24, Kaulunani initiated new programs with funding from the USDA Forest Service via the Inflation Reduction Act (IRA) (\$3.5M total award amount FY23-FY28), Bipartisan Infrastructure Law (BIL) (\$200,000 in FY24 funding) and the State of Hawai‘i (\$999,534 in FY24 funding). These programs build on ongoing activities to connect communities with trees to promote biocultural well-being. Newly established programs include the Kaulunani IRA Subaward Program, Community Coconut Program, and Shade Trees in Schools Program, funded by IRA through 2028. These programs each support increased personnel capacity. An IRA Community Partnerships Coordinator was hired at the beginning of FY24 and has facilitated the competitive sub-award process to partner with six new grantees. In FY25, an Indigenous Coconut Specialist, Program Assistant, and Campus Forester will be hired, and a contract for tree planting and care at select Title 1 schools will begin.

BIL funding supported six (6) sub-awarded organizations as they continued multi-year projects: Hawai‘i Public Health Institute; Mālama Kaua‘i; Waianae Community Redevelopment Organization; Mālama Learning Center; Hawai‘i Islands Lands Trust; and University of Hawai‘i (SPROUTS O‘ahu). Broadly, projects focus on connecting youth and volunteers with opportunities to plant and care for trees. Local capacity building is another focus of BIL funding, as demonstrated in a chainsaw training for community members pictured below.

Special state funds also expanded Kaulunani’s program activities in FY24. Through state funding, DOFAW secured a contract with Forest Solutions Inc. (\$99,534) to assist Kaulunani in identifying and developing resources to support and improve urban tree management. The project will help build a network of support for Hawaii’s urban forests to sustain and grow their roles as critical green infrastructure for our island communities.

\$900,000 in state funds was competitively sub-awarded to seven partners to enact urban and community forestry projects ([press release](#) with details on the awarded projects). These projects will develop management plans, establish community tree nurseries, and engage community members in restoring accessible community forest sites. Support from the state for urban and community forestry projects is greatly appreciated and demonstrates recognition of the ongoing work of community organizations to connect with and steward accessible forests.

Table 3: FY24 Contracts for Urban and Community Forest Projects:

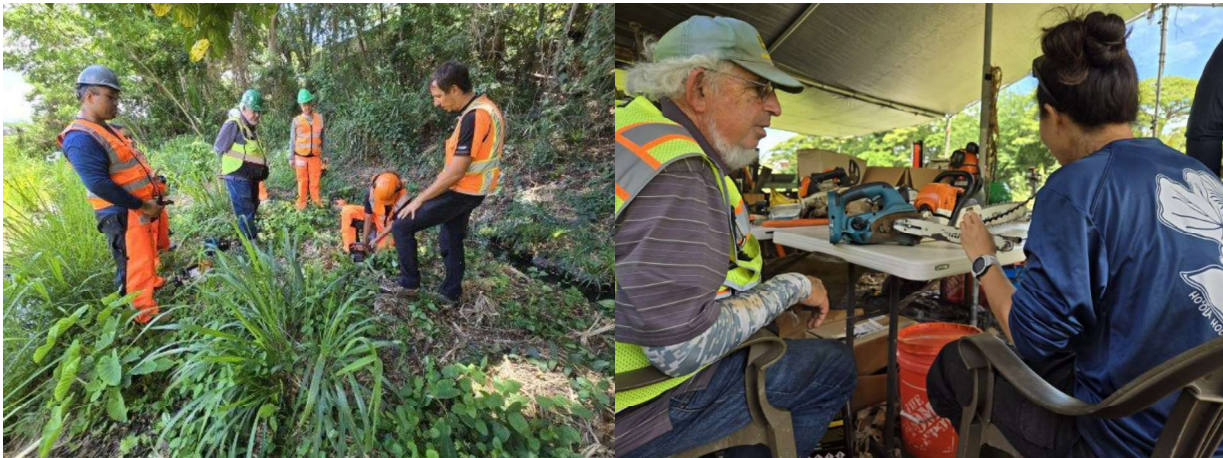
Island	Organization Name	Project title	Award amount
Hawai'i	Hiki Ola	Ola i ka 'Āina	\$69,305
Hawai'i	Waikōloa Dry Forest Initiative	Waikōloa Community Forest Expansion	\$150,000
Kaua'i	Mālama Kaua'i	Village Harvest: Engaging and educating Kaua'i residents in community forestry	\$65,767.89
Maui	County of Maui	Maui Urban Forest Management Plan – Building Capacity and Partnerships and Advancing Equity in Community Forestry	\$42,943.11
Maui	Mālama Hāmākua Maui	Restoring the Hamakualoa Coast through a Community lead Native Plant Project	\$71,984
O'ahu	City and County of Honolulu	Updating Honolulu Rules, Regulations, and Practices for Urban and Community Forestry	\$300,000
O'ahu	Kōkua Kalihi Valley	Ulu Koa: Aligning Generational Abundance & Ancestral Wholeness	\$200,000

We are excited to share that 2025 will be recognized as **Hawaii's Year of Our Community Forests** through a public outreach campaign. In partnership with the DOFAW Outreach team, Kaulunani is planning a year of tree-related celebrations across arts and sciences, encouraging people to reflect on what urban forestry means to them and how trees form part of their community.

The Kaulunani program is grateful for the State of Hawai'i's support of urban and community forests and the communities of people who care for and rely on these trees where we live, work, learn, and play.



Mālama Hāmākua Maui and Kaulunani staff on a site visit at the Hāmākualoa Open Space Preserve. Photo credit: DOFAW



Certified Arborist Steve Nimz leads community partners in a full-day Chainsaw Safety Workshop (supported by BIL funding). Photo credit: Anthony Deluze.

EXHIBIT A: Hawai'i Forest Stewardship Program Enrollment

State Forest Stewardship Program Agreements

Active State Cost-Share Agreements/First 10 Years

Name of Project/ Landowner	Date Enrolled	State Contract Total	Funded to Date	Match to Date	Location	Size (Acres)	Management Practices
Paniolo Tonewoods	3/3/2020	\$749,523	\$396,563	\$837,540	Hamakua, Hawaii Island	552.8	Koa timber, native forest restoration
Masters project	9/13/2019	\$56,525	\$25,514	\$34,812	Puna, Hawaii Island	5	Native forest restoration, seed orchard
Kaalea Farm	3/12/2019	\$123,004	\$99,808	\$100,437	Kaneohe, Oahu	12.5	Native forest restoration, agroforestry
Shlachter	3/7/2019	\$60,411	\$49,630	\$49,630	Puna, Hawaii Island	8.25	Native forest restoration
MDHE LLC	5/24/2019	\$55,324	\$17,226	\$14,370	Kailua, Oahu	6	Native forest restoration, agroforestry
Kona Hema	9/18/2018	\$736,500	\$441,900	\$441,900	South Kona, Hawaii Island	8,073	Native forest restoration, timber
Tripavata, LLC	7/30/2018	\$152,063	\$104,859	\$100,981	North Kona, Hawaii Island	60	Native forest restoration and production
Ukulele Native Forest	3/21/2017	\$199,975	\$57,561	\$42,798	Makawao, Maui	100	Native forest restoration
Ahualoa Homesteads	5/1/2016	\$28,990	\$26,915	\$28,360	Hamakua, Hawaii Island	18	Native forest restoration
Hiipaka LLC	9/1/2015	\$422,639	\$374,337	\$2,956,972	Waimea Valley, Oahu	1,875	Native forest restoration
		2,584,954	1,594,313	4,607,801		10,711	

Projects with Approved Plans not entering into State Cost-Share Agreements

Name of Project/Landowner	Date Plan Approved	State Funds*	Acres	Location	Management Objectives
Hawaii Island Land Trust	8/14/2023	\$7,500.00	1645.8	South Hilo, Hawaii Island	Native forest restoration
Pia Valley	5/26/2023	\$5,000.00	215	Nui Valley, Oahu	Native forest restoration
Parker Ranch	4/3/2023	\$5,200.00	3300	Waimea, Hawaii	Native forest restoration
Puu O Hoku Ranch	3/8/2023	\$3,750.00	160	East Molokai, Molokai	Native forest restoration
Louie (Holokila LLC)	9/29/2022	\$3,000.00	10.6	Volcano, Hawaii	Native forest restoration
Ho'omau Ranch	5/19/2022	\$2,500.00	1563	South Kona, Hawaii Island	Native forest restoration, agroforestry
Regan	4/12/2022	\$991	37	Hamakua, Hawaii Island	Native forest restoration
Herzog	8/26/2021	\$5,200	114	Hana, Maui	Native forest restoration, agroforestry, silvopasture

Dow	8/23/2021	\$750	23.4	Volcano, Hawaii Island	Native forest restoration
Kamanui Ranch	8/22/2021	\$3,250	869	Waialua, Oahu	Native forest restoration and reforestation
Richardson	8/8/2021	\$2,499	8	Ahuimanu, Oahu	Native forest restoration
Haloa Aina, LLC	8/6/2021	\$3,000	2,780	Kealakekua, Hawaii Island	Native forest production (sandalwood oil) and restoration, conservation easement project
Ralston	8/1/2021	\$2,499	8.5	Palolo, Oahu	Native forest restoration
Lyons	2/28/2020	\$3,200	17	Mountain View, Hawaii Island	Native forest conservation, agroforestry
Kaala Ranch	4/12/2019	\$4,350	172.8	Waialua, Oahu	Native forest restoration, silvopasture, agroforestry
Waiawa Waiamano Watershed	1/25/2019	\$5,000	1050	Central Oahu	Native forest restoration and conservation
Duren Native Forest Restoration	4/27/2018	\$1,500	23	North Kona, Hawaii Island	Native forest restoration and management
Kahulu Lio	12/14/2018	\$2,500	5.1	Kaneohe, Oahu	Native forest restoration, agroforestry
Kahanu Gardens	1/20/2017	\$4,446	128	Hana, Maui	Coastal forest restoration
Mana Gardens	9/1/2016	\$0	89	Puna, Hawaii Island	Native forest conservation
Pace Demonstration Forest	9/18/2015	\$4,000	389	South Kona	Native forest restoration and production
Discovery Forest Restoration, KS/KBCC	5/29/2015	\$2,500	120.7	Kau, Hawaii Island	Native forest restoration and management
Black Rhino Foundation	5/29/2015	\$2,100	190	South Point, Hawaii Island	Agroforestry, native forest restoration and production
Kaawaloa Forest	5/14/2014	\$0	1,375	Kealakekua, Hawaii Island	Native forest production and recreation
Ka Mahiai Ihi O Wailea/Alii Pauahi Hawaiian Civic Club	9/24/2013	\$1,750	15	North Hilo, Hawaii Island	Agroforestry
Kealakekua Heritage Ranch	5/10/2013	\$0	8,455	Kealakekua, Hawaii Island	Native reforestation, silvopastoral timber production
Ohulehule Forest Conservancy	10/29/2012	\$5,000	1,000	Waikane, Oahu	Native forest restoration and management
Dalton	1/21/2012	\$781	89	Hamakua, Hawaii Island	Native forest restoration and production
Brooke	2/15/2013	\$1,000	9	North Hilo, Hawaii Island	Native forest restoration
Nierode	3/19/2010	\$2,550	40	Mt. View, Hawaii Island	Native forest restoration and conservation
Ahu Lani Sanctuary	6/20/2008	\$3,000	21	Hamakua, Hawaii Island	Native forest restoration
		\$76,316.50	22,277.10		

*State cost-share assistance is provided for development of forest management plans.

Projects with Approved Plans not entering into State Cost-Share Agreements

Name of Project/Landowner	Date Plan Approved	State Funds*	Acres	Location	Management Objectives
Hawaii Island Land Trust	8/14/2023	\$7,500.00	1645.8	South Hilo, Hawaii Island	Native forest restoration
Pia Valley	5/26/2023	\$5,000.00	215	Nui Valley, Oahu	Native forest restoration
Parker Ranch	4/3/2023	\$5,200.00	3300	Waimea, Hawaii	Native forest restoration
Puu O Hoku Ranch	3/8/2023	\$3,750.00	160	East Molokai, Molokai	Native forest restoration
Loui (Holokila LLC)	9/29/2022	\$3,000.00	10.6	Volcano, Hawaii	Native forest restoration
Ho'omau Ranch	5/19/2022	\$2,500.00	1563	South Kona, Hawaii Island	Native forest restoration, agroforestry
Regan	4/12/2022	\$991	37	Hamakua, Hawaii Island	Native forest restoration
Herzog	8/26/2021	\$5,200	114	Hana, Maui	Native forest restoration, agroforestry, silvopasture
Dow	8/23/2021	\$750	23.4	Volcano, Hawaii Island	Native forest restoration
Kamananui Ranch	8/22/2021	\$3,250	869	Waialua, Oahu	Native forest restoration and reforestation
Richardson	8/8/2021	\$2,499	8	Ahuimanu, Oahu	Native forest restoration
Haloa Aina, LLC	8/6/2021	\$3,000	2,780	Kealakekua, Hawaii Island	Native forest production (sandalwood oil) and
Ralston	8/1/2021	\$2,499	8.5	Palolo, Oahu	Native forest restoration
Lyons	2/28/2020	\$3,200	17	Mountain View, Hawaii Island	Native forest conservation, agroforestry
Kaala Ranch	4/12/2019	\$4,350	172.8	Waialua, Oahu	Native forest restoration, silvopasture, agroforestry
Waiawa Waiamano Watershed	1/25/2019	\$5,000	1050	Central Oahu	Native forest restoration and conservation
Duren Native Forest Restoration	4/27/2018	\$1,500	23	North Kona, Hawaii Island	Native forest restoration and management
Kahulu Lio	12/14/2018	\$2,500	5.1	Kaneohe, Oahu	Native forest restoration, agroforestry
Kahanu Gardens	1/20/2017	\$4,446	128	Hana, Maui	Coastal forest restoration
Mana Gardens	9/1/2016	\$0	89	Puna, Hawaii Island	Native forest conservation
Pace Demonstration Forest	9/18/2015	\$4,000	389	South Kona	Native forest restoration and production
Discovery Forest Restoration,	5/29/2015	\$2,500	120.7	Kau, Hawaii Island	Native forest restoration and management
Black Rhino Foundation	5/29/2015	\$2,100	190	South Point, Hawaii Island	Agroforestry, native forest restoration and
Kaawaloa Forest	5/14/2014	\$0	1,375	Kealakekua, Hawaii Island	Native forest production and recreation
Ka Mahiai Ihi O Wailea/Alii Pauahi	9/24/2013	\$1,750	15	North Hilo, Hawaii Island	Agroforestry
Kealakekua Heritage Ranch	5/10/2013	\$0	8,455	Kealakekua, Hawaii Island	Native reforestation, silvopastoral timber
Ohulehule Forest Conservancy	10/29/2012	\$5,000	1,000	Waikane, Oahu	Native forest restoration and management
Dalton	1/21/2012	\$781	89	Hamakua, Hawaii Island	Native forest restoration and production
Brooke	2/15/2013	\$1,000	9	North Hilo, Hawaii Island	Native forest restoration
Nierode	3/19/2010	\$2,550	40	Mt. View, Hawaii Island	Native forest restoration and conservation
Ahu Lani Sanctuary	6/20/2008	\$3,000	21	Hamakua, Hawaii Island	Native forest restoration
		\$76,316.50	22,277.10		

**State cost-share assistance is provided for development of forest management plans.*

State Forest Stewardship Program Agreements

Projects In Post 10 Year Maintenance Period

Name of Project/Landowner	Date Enrolled	Total Funded	Match	Location	Size (Acres)	Management Objectives
Kaupakuea Orchards, LLC	4/2/2014	\$16,157	\$16,157	Hamakua, Hawaii Island	23	Timber production, native forest buffer
Saiva Siddhanta Church	3/17/2014	\$127,862	\$128,331	Kalepa, Kauai	80	Timber production, native forest production
Lundburg	3/6/2014	\$45,510	\$51,234	Hamakua, Hawaii Island	41	Native forest restoration, agroforestry
Hui Ku Maoli Ola, LLC	5/1/2012	\$408,150	\$462,450	Haiku Valley, Oahu	20	Native forest restoration
Waikoloa Dry Forest Recovery	8/1/2009	\$465,382	\$581,741	Waikaloa, Hawaii Island	275	Dryland forest restoration, education
Conant	2/1/2009	\$6,833	\$6,426	Volcano, Hawaii Island	7	Native forest restoration, pig control
Honolua Wao Kele/MLP	11/1/2008	\$371,880	\$376,706	Kapalua, Maui	30	Native Forest Restoration, erosion control
Koa Aina/Kokua Kalihii Valley	2/8/2008	\$355,520	\$367,776	Kalihii Valley, Oahu	30	Native forest restoration, education
Ola Honua/Neaulani Inc.	8/1/2005	\$492,990	\$712,640	Kipahulu, Maui	121	Native forest restoration, timber production
Honouliuli/TNC	10/25/2002	\$152,325	\$214,149	Waianae, Oahu	3,692	Native forest/habitat restoration
Ookala Community Forest/Laupahoehoe Train Museum	9/1/2002	\$76,554	\$93,864	Laupahoehoe, Hawaii Island	21	Community demonstration of timber species
Ku Ohia Laka	6/22/2001	\$57,192	\$97,064	Mt. View, Hawaii Island	39	Native forest restoration, educational trails
Castle & Cooke Resorts, LLC	5/25/2001	\$608,919	\$801,531	Lanai	3,588	Native forest and watershed restoration
Green & Russo	1/25/2002	\$25,647	\$32,054	Papaaloa, Hawaii Island	17	High-value hardwood production
Dougherty	7/28/2001	\$9,006	\$9,109	Ninole, Hawaii Island	17	High-value hardwood production
Linda & Michael Larish	5/11/2001	\$11,166	\$11,788	Kurtistown, Hawaii Island	20	Hardwood production, forest restoration
Hamakua Hardwoods/Giardina	5/11/2001	\$25,359	\$25,359	Papaaloa, Hawaii Island	17	Native dryland forest restoration
Kainalu Ranch/Dunbar	1/12/2001	\$241,707	\$307,653	Kainalu Ahupuaa, Molokai	141	High-value hardwood production
Walter & Kathy Mendes	2/11/2000	\$19,538	\$21,134	Hoolehua, Molokai	18	Acacia koa timber production
Allan Batesole	2/25/2000	\$15,018	\$24,932	Anahola, Kauai	7	High-value hardwood production
H&G Koa Enterprises, Inc./Hill	6/5/1998	\$33,193	\$39,444	Paaulo, Hawaii Island	14	High-value hardwood production

Kapaka Road Partnership	3/25/1998	\$41,720	\$54,384	Princeville, Kauai	25	High-value hardwood production, restoration
Hawaiian Mahogany, Inc.	1/30/1998	\$698,237	\$1,204,183	Koloa, Kauai	954	koa timber production, forest restoration
Maikai Ranch/Twigg-Smith	7/12/1996	\$7,531	\$8,493	Holualoa, Hawaii Island	321	Silvopasture/agroforestry
Umikoa Ranch/Matsuura	2/23/1996	\$433,373	\$866,750	Kaala, Hawaii Island	850	High-value hardwood production, restoration
Jack Zimmerman	7/1/1995	\$43,203	\$46,170	Honokaa, Hawaii Island	42	High-value hardwood production, restoration
Mark Kimball	12/15/1995	\$83,417	\$92,794	Holualoa, Hawaii Island	156	Native forest restoration & silvopasture
Sam & Tanya Paltin	5/3/1994	\$6,407	\$6,407	Wood Valley, Hawaii Island	12	Native forest restoration & education trails
Kalopi Reforestation/Hancock	5/26/1994	\$38,020	\$38,020	Kawaihae Uka, Hawaii Island	65	High-value hardwood production
Rex Provisor	3/21/1994	\$31,185	\$35,615	Papa Area, Hawaii Island	18	High-value hardwood production, restoration
Stephen Oldfather	12/1/1993	\$4,767	\$4,767	North Hilo, Hawaii	15	High-value hardwood production, restoration
Michael & Kili Matsui	8/13/1993	\$5,935	\$5,923	Wood Valley, Hawaii Island	40	Watershed restoration & erosion control
Wood Valley Community	7/1/1993	\$21,550	\$21,550	Wood Valley, Hawaii Island	34	Native forest restoration
Molokai Ranch	7/1/1992	\$75,723	\$75,723	Puu Nana, Molokai	425	Nene habitat restoration
Kaloko Mauka Cloud Forest	1990	\$87,500	\$128,450	Kaloko Mauka, Hawaii Island	95	Native forest restoration
W.H. Shipman Nene	1990	\$10,000	\$10,000	South Hilo, Hawaii Island	50	Native forest restoration
		\$4,556,796	\$6,322,599		11,176	