



UNIVERSITY  
of HAWAII®

Ke Kulanui o Hawai'i

David Lassner  
President

**DEPT. COMM. NO. 54**

November 17, 2023

The Honorable Ronald D. Kouchi,                      The Honorable Scott Saiki, Speaker  
President and Members of the Senate      and Members of the House of Representatives  
Thirty-Second State Legislature              Thirty-Second State Legislature  
Honolulu, Hawai'i 96813                      Honolulu, Hawai'i 96813

Dear President Kouchi, Speaker Saiki, and Members of the Legislature:

For your information and consideration, the University of Hawai'i is transmitting one copy of the Annual Report on the University of Hawai'i's Continued Participation in the Western Interstate Commission for Higher Education (Section 304A-3205, Hawai'i Revised Statutes) as requested by the Legislature.

In accordance with Section 93-16, Hawai'i Revised Statutes, this report may be viewed electronically at: <https://www.hawaii.edu/offices/government-relations/2024-legislative-reports/>.

Should you have any questions about this report, please do not hesitate to contact Stephanie Kim at (808) 956-4250, or via e-mail at [scskim@hawaii.edu](mailto:scskim@hawaii.edu).

Sincerely,

A handwritten signature in black ink that reads 'David Lassner'.

David Lassner  
President

Enclosure

2444 Dole Street, Bachman Hall  
Honolulu, Hawai'i 96822  
Telephone: (808) 956-8207  
Fax: (808) 956-5286

An Equal Opportunity/Affirmative Action Institution

# UNIVERSITY OF HAWAI‘I SYSTEM ANNUAL REPORT



REPORT TO THE 2024 LEGISLATURE

Annual Report on  
the University of Hawai'i's Continued Participation in the  
Western Interstate Commission for Higher Education

HRS 304A-3205

November 2023

**Annual Report to the 2024 Hawai'i Legislature on  
the University of Hawai'i's Continued Participation in the  
Western Interstate Commission for Higher Education  
HRS 304A-3205**

**History and Membership**

The Western Interstate Commission for Higher Education (WICHE) was created in the 1950s by the Western Regional Education Compact to facilitate resource sharing among the higher education systems of the West. The WICHE Commission's 17 members include representatives from 15 western states—Alaska, Arizona, California, Colorado, Hawai'i, Idaho, Montana, Nevada, New Mexico, North Dakota, Oregon, South Dakota, Utah, Washington, and Wyoming—and the U.S. Pacific territories and freely associated states (Guam and the Commonwealth of the Northern Mariana Islands).

Members work collaboratively to provide educational access and excellence for all citizens. WICHE and its staff are headquartered in Boulder, Colorado, and operate out of the State Higher Education Policy Center, which WICHE owns with the State Higher Education Executive Officers Association and the National Center for Higher Education Management Systems. Since 1959, Hawai'i has benefitted from the partnership with WICHE through regional collaboration, resource-sharing, sound public policy, and innovation.

**Governance**

The WICHE Commission, with three commissioners from each state, molds the organization's mission and sets its priorities. The Governor appoints each Commissioner who serves a four-year term. Hawai'i's commissioners are David Lassner, President of the University of Hawai'i; John Morton, Vice President Emeritus, Community Colleges of the University of Hawai'i; and Colleen Sathre, Vice President Emeritus, University of Hawai'i. WICHE also seeks assistance and advice from policymakers, educators, administrators, and legislators. WICHE's Legislative Advisory Committee (LAC) is composed of legislator-members from each state—including representatives from the State of Hawai'i, Senator Donna Mercado Kim, Senator Michelle N. Kidani, Representative Lisa Kitagawa, and Representative Amy Perruso. WICHE staff also serves the LAC by informing its members about emerging policy issues in the West. The University of Hawai'i System Office of the Vice President for Academic Strategy is assigned to administratively manage WICHE-related programming for the Professional Student Exchange Program (PSEP) and other initiatives, such as the WICHE Interstate Passport®.

**WICHE Workplan for 2024**

WICHE's 48-member Commission updates and approves the organization's annual workplan each May. This workplan outlines the diverse set of activities, projects, and initiatives that the WICHE Commission has prioritized for the fiscal year beginning July 1, 2023, all of which are intended to advance WICHE's mission.

WICHE's five key focus areas guide the work of the organization:

- **Finance and Affordability:** Supporting the alignment of appropriations, tuition, and financial aid policy and practice at the institutional, state, and federal levels to make postsecondary education more accessible for those who seek it.
- **Access and Success:** Improving access to and success in postsecondary education for all students, especially those historically underserved, by developing and sharing evidence-based strategies to increase student outreach and engagement.
- **Workforce and Society:** Collaborating across all sectors, including but not limited to behavioral health, business, and industry, to meet the region's workforce needs so that our communities can thrive.
- **Innovation:** Developing and supporting advancements in teaching and learning, student services, and technology to help students access and succeed in postsecondary education and increase the value of their investment after completion.
- **Value and Accountability:** Collecting and measuring sound data about postgraduate outcomes to determine the true value of WICHE's partnerships for students and society at large so that we can continually improve how students, institutions, and WICHE members spend their time, effort, and money on postsecondary education and workforce training.

### **WICHE's Added Value**

This work plan is executed through the various programs, projects, and initiatives developed and coordinated by members of four operational units: Program and Services, Policy Analysis and Research, WICHE Cooperative for Educational Technologies (WCET), and Behavioral Health. Highlights of their work are provided in the following sections.

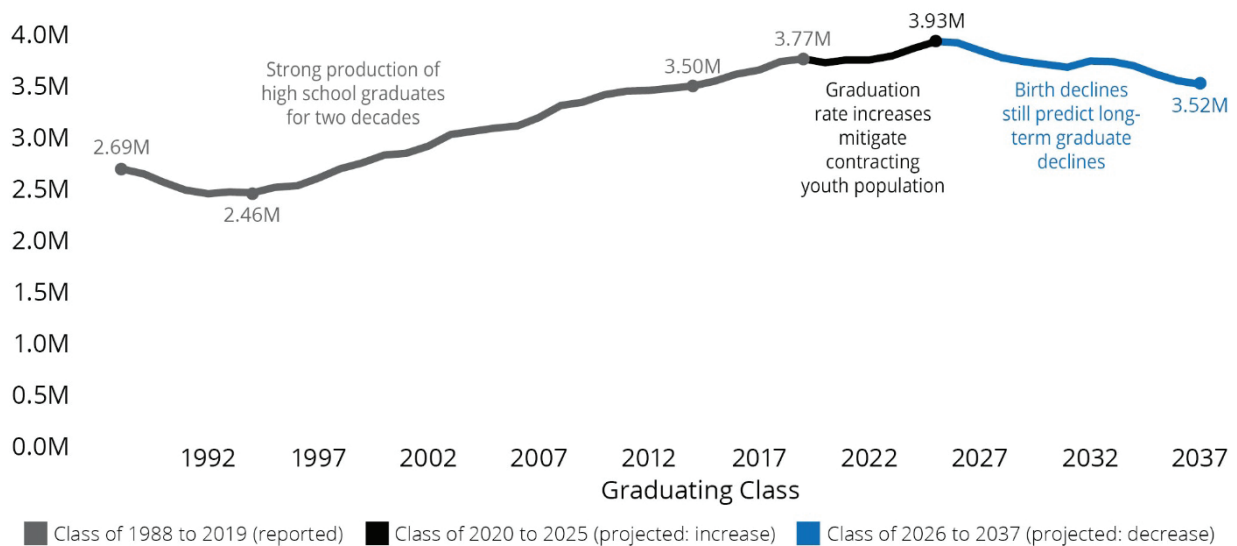
***Programs and Services:*** The Programs and Services unit is where students thrive, and institutional leaders collaborate. The unit's primary goals are to broaden student access and success and to foster higher education collaborations that address institutional strategic goals. The Programs and Services unit manages WICHE's three Student Access Programs and other initiatives that help institutions and students—undergraduate, graduate, and health professional—save money and efficiently use available resources. The unit also oversees initiatives that bring together the West's higher education leaders to address shared goals and concerns and develop a new cadre of academic administrative leaders. In addition, it helps institutions achieve cost savings through three programs in collaboration with the Midwestern Higher Education Compact (MHEC), which created and administers the programs.

***Policy Analysis and Research:*** WICHE is a valued research and policy resource that provides Hawai'i with various policy analysis and data resources by leveraging its convening power to foster regional collaboration. Access to this information and collaboration with other regional institutions helps Hawai'i make better-informed policy decisions. The unit leads research projects and collaborative initiatives focusing on open educational resources, the West's workforce challenges, and supporting postsecondary education and completion. WICHE staff provides expertise on higher education issues, including demographic change, governance, equitable opportunity in higher education, adult learners, state and federal financial aid, finance, articulation and transfer, federal policy, and college completion initiatives. WICHE is responsible for implementing the Western Region's State Authorization Reciprocity Agreement (SARA). The unit's publication series, *WICHE Insights*, explores a wide range of significant policy issues. The unit also undertakes major long-term, grant-funded projects, collaborates with other regional and national organizations, and provides short-term technical assistance to members.

Through regional collaboration, WICHE brings together senior academic leaders to foster dialogue about issues facing individual institutions through its leadership and professional development networks. Currently, all seven Hawai'i Community Colleges and the University of Hawai'i Community College (UHCC) system office participate in the Western Alliance of Community College Academic Leaders, and Della Teraoka, Acting Vice President of Community Colleges, serves as a member of the Alliance executive committee. Additionally, all three of our four-year universities, plus the University of Hawai'i System office, participate in the Western Academic Leadership Forum for four-year institutions with Debora Halbert, Vice President for Academic Strategy, representing Hawai'i as a member of the Alliance executive committee.

Hawai'i has also participated in projects like the Multistate Longitudinal Data Exchange program and research projects like the *Knocking at the College Door* report.

WICHE's latest quadrennial [\*Knocking at the College Door\*](#) report, published in December 2020, updated its previous projections of college-ready students, noting that while there is going to be an expected peak in the number of high school graduates in the mid-2020s, we will see a modest decline through 2037.



**Figure 1 GRADUATION BY THE NUMBERS THROUGH 2037**

Source: Western Interstate Commission for Higher Education, *Knocking at the College Door*, 10th edition, 2020. See the [Technical Appendix](#) for detailed sources of data through the Class of 2019; WICHE projections, Class of 2020 through 2037. ([View states or regions](#))

*Knocking at the College Door* provides WICHE participating states with a plethora of information, including breaking down projections based on race/ethnicity, so states can pay close attention to the achievement gaps identified and take action to help close those gaps.

Through the data published in this report, Hawai'i is projected to have, at its peak in 2025, 15,800 graduates. Between the class of 2018 and the class of 2037, high school graduates are projected to average 14,530 per year. With this information, our State can better prepare and lay the groundwork to help our students pursue higher educational opportunities.

**WCET – WICHE Cooperative for Educational Technologies:** WCET is the leader in the practice, policy, and advocacy of technology-enhanced learning in higher education. Its growing membership includes institutions, higher education agencies and systems, nonprofit organizations, government agencies, and corporations in all U.S. states and several Canadian provinces. WCET members include Kapi'olani Community College, Leeward Community

College, the University of Hawai'i System, and the University of Hawai'i - West O'ahu. Gloria Niles, University of Hawai'i System, serves on the WCET Steering Committee.

WICHE has also convened the OERwest Network, part of a nationwide collaborative to scale the development and adoption of free course materials. Open educational resources (OER) have shown promise in improving student outcomes, particularly for poverty-affected students, for whom the high cost of textbooks can be a barrier to postsecondary success.

The State Authorization Reciprocity Agreement (SARA) is a voluntary, state-led initiative designed to establish comparable standards for U.S. states and territories regulating postsecondary distance education. SARA expands access to postsecondary educational opportunities while ensuring meaningful consumer protections for students and reducing regulatory red tape for institutions. WICHE is responsible for coordinating the membership of SARA states in the West through the WICHE State Authorization Reciprocity Agreement (W-SARA). Currently, Hawai'i has ten institutions participating in this program, of which eight of the ten University of Hawai'i campuses are members. They include Hawai'i Community College, Kapi'olani Community College, Kaua'i Community College, Leeward Community College, University of Hawai'i at Mānoa, University of Hawai'i Maui College, University of Hawai'i West O'ahu, and Windward Community College. W-SARA is also advised by a Regional Steering Committee (RSC) that is responsible for evaluating and determining whether WICHE states and territories that participate in SARA demonstrate adequate capacity and sufficient standards for membership and provide oversight of institutions under SARA.

Additionally, as a part of being a WICHE member, Hawai'i also has access to resources such as [Every Learner Everywhere](#), which is a network of 12 organizations that are committed to helping institutions use new technology to innovate teaching and learning, with the ultimate goal of improving student outcomes for Black, Latinx, and indigenous students, poverty-affected students, and first-generation students. This network is funded by the Bill and Melinda Gates Foundation and hosted within WCET.

The network provides two- and four-year institutions with consulting, training, and resources to support the adoption and implementation of adaptive courseware. Hawai'i schools have been an active part of this network, taking advantage of resources from such partners as Achieving the Dream and WCET, as noted above, just to name a few.

***Behavioral Health:*** The WICHE Behavioral Health Program (BHP), established in 1955, seeks to support the public systems of care and the workforce that serve people with behavioral health issues and their families. The program supports this mission through partnerships with state behavioral health agencies, federal agencies, advocacy and consumer groups, and higher education institutions. WICHE Behavioral Health activities focus on direct technical assistance to state and local agencies, policy analysis and research, support of state behavioral health agency data analysis, and higher education liaison activities to enhance workforce development and campus behavioral health.

The WICHE Behavioral Health Program helped establish and continues supporting rural psychology internship consortia in Alaska, Hawai'i, Idaho, Nevada, Oregon, New Mexico, Utah, and newly developing programs in Guam, South Dakota, and with Sanford Health.





*“WICHE Behavioral Health was instrumental in helping state agencies in Hawai‘i develop an APA-accredited predoctoral psychology internship training program for our state. The ability of the WICHE consultants to integrate our internship into the nationwide APPIC match selection process and their invaluable assistance with obtaining APA accreditation has enabled our program to attract and train highly competent doctoral students for work in our public service agencies across the state.”*

---

**ALEX BIVENS, PH.D.**

Clinical Psychologist Faculty,  
Hawai‘i Psychology Internship  
Consortium

### Hawai‘i Psychology Internship Consortium

The WICHE Behavioral Health Program continues to assist the State of Hawai‘i in the operation and continuous accreditation of its psychology internship consortium. A primary goal of the internship is to increase the number of psychologists in Hawai‘i and build the state’s behavioral health workforce. Three Hawai‘i State agencies (Department of Education, Department of Health, and Department of Public Safety) provide funding to support the WICHE BHP’s ongoing development and operations of the Hawai‘i Psychology Internship Consortium (HI-PIC). In fiscal year (FY) 2022, the HI-PIC program graduated nine interns across seven sites, and since its inception in 2013, the program has graduated 70 interns, achieving a 98.91% graduation rate.

### Hawai‘i Department of Education: Supplement Recruitment of Clinical Psychologists

The Hawai‘i Department of Education continued its contract with the WICHE Behavioral Health Program to recruit and contract with clinical psychologists to ensure all program requirements for supervision and support of staff, students, and program fidelity are maintained for the West Hawai‘i’s School-Based Behavioral Health (WH-SBBH) program. The WH-SBBH program has historically faced significant challenges in recruiting and retaining professionals for service provision because of the rural and workforce challenges that leave WH-SBBH without the needed professional credentials to supervise and train new SBBH personnel.

### Together with Veterans (TWV) – Rural Veteran Suicide Prevention Program

is a national program that enlists rural veterans and local partners to join forces to reduce veteran suicide in their communities. Funded by the U.S. Department of Veterans Affairs and administered by the WICHE BHP, TWV provides communities with individualized coaching, tools, training, technical assistance, and resources to implement the program in their communities. The BHP supports 35 rural communities as far east as New Hampshire and as far west as Guam, and of those, it supports 11 rural

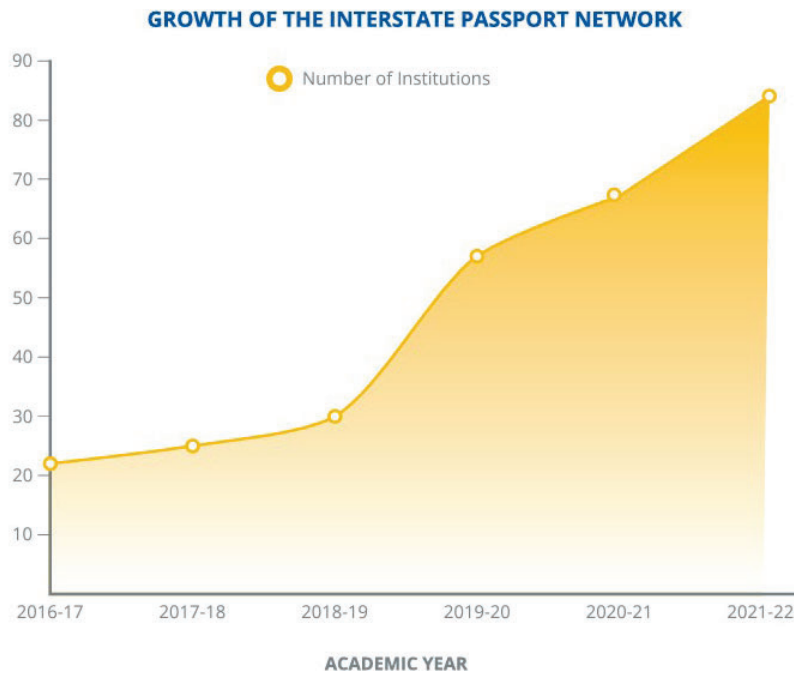
communities in the WICHE region. The TWV Program has one site in Hawai‘i and has served nearly 700 rural veterans.

Detailed information on WICHE’s current work plan and their current and ongoing projects can be found at: <https://www.wiche.edu/wp-content/uploads/2023/07/FY2024-WICHE-Workplan.pdf>

### Interstate Passport®

Interstate Passport® is a program that enables block transfer of lower-division general education based on learning outcomes and proficiency criteria rather than on specific courses and credits. Students who complete a Passport at one network institution will be recognized as having completed all lower-division general education requirements at any other network institution. Its overarching goal is simple: to eliminate unnecessary repetition of academic work

after students transfer. It also provides institutions in the network with an academic progress tracking system for Passport transfer students, designed by registrars and institutional researchers in conjunction with the National Student Clearinghouse. WICHE staff provides overall direction and support for this innovative program.



Students who earn a Passport and transfer to another network-member institution need not repeat or take additional courses to meet that institution’s lower-division general education requirements. Taking fewer unnecessary courses helps students complete degrees more quickly and at higher rates, with lower cost and debt—factors improving institutions’ performance metrics. The Interstate Passport® program’s focus on learning outcomes (instead of course-by-course articulation) increases curricular flexibility and reduces time negotiating equivalencies.

**Figure 2 GROWTH OF THE INTERSTATE PASSPORT® NETWORK**

*Source: Western Interstate Commission for Higher Education, Interstate Passport® Annual Report 2021-2022*

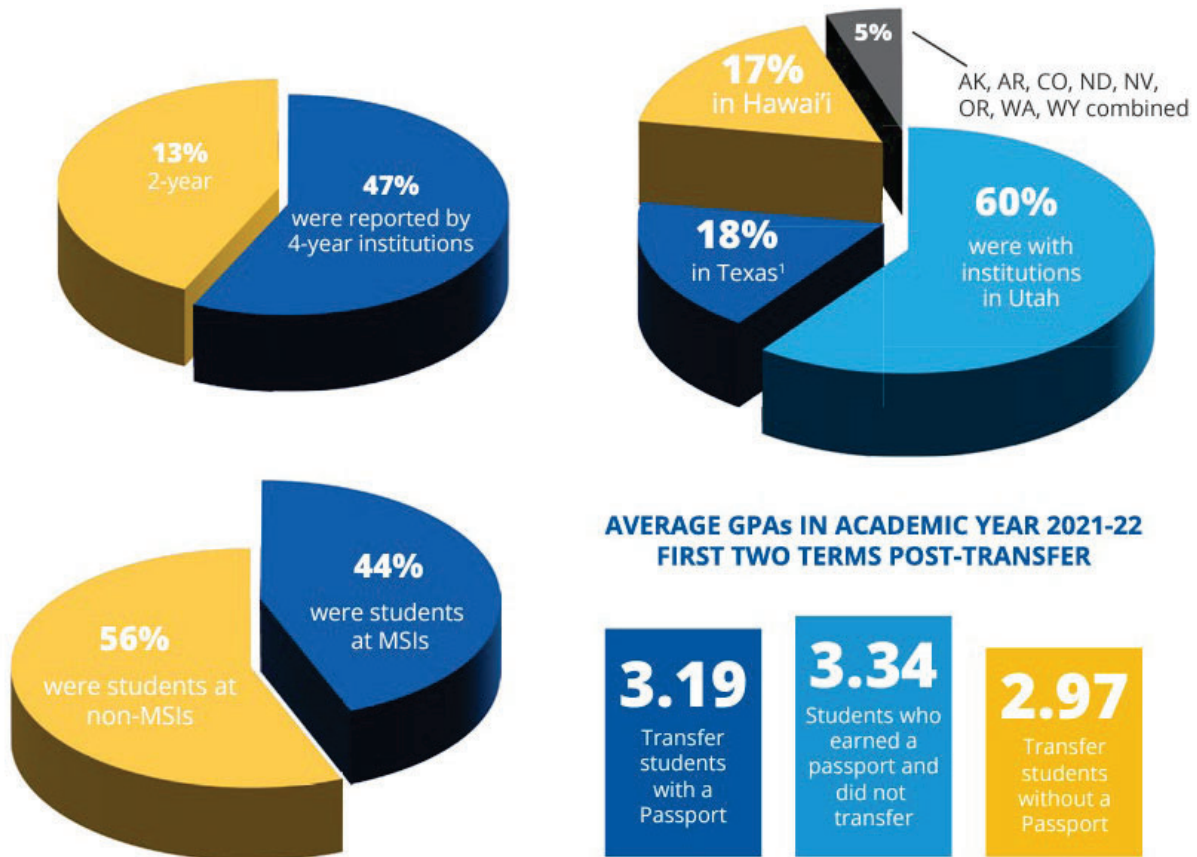
The academic progress of students who transfer with a Passport to other network-member institutions is tracked through the National Student Clearinghouse and reported to students’ sending institutions for use in continuous improvement and sustainability efforts. Additionally, the Student Transfer Destinations by State database, developed by the Interstate Passport® program, illustrates transfer patterns of students across the entire United States.

Each cohort of students is made up of first-time students of any age who began their postsecondary studies in one of these years. Cohorts include full-time and part-time students and exclude students who received any degree or certificate from a two- or four-year institution prior to 2006, 2008, 2010, 2012, and 2014, respectively. This database serves as a dynamic tool to demonstrate, over time, the interstate and intrastate transfer trends among cohorts and provides a visual display of where students are transferring to and from across state lines.

At the end of the 2022 fiscal year, the network has 71 member institutions spanning 21 states, including all the public two- and four-year institutions in four of those states. To date, just under 90,000 students have earned a Passport.



**AMONG STUDENTS REPORTED TO HAVE RECEIVED A PASSPORT IN ACADEMIC YEAR 2021-2022:**



**Figure 3 STUDENTS WHO RECEIVED PASSPORTS**

*Source: Western Interstate Commission for Higher Education, Hawai'i Factsheet Academic Year 2022-2023*

All ten of the University of Hawai'i campuses participate in the Interstate Passport® Network. The University of Hawai'i West O'ahu and Leeward Community College have been members since 2016 and have been heavily involved in developing Interstate Passport® policies and practices. Overall enrollment in the system is nearly 50,000 full- and part-time students across 700 undergraduate and graduate programs.

In June 2023, WICHE notified all stakeholders that the WICHE Interstate Passport® Program will be sunsetting effective December 31, 2023. Currently, WICHE is working on materials that WICHE schools can use for curricular alignment, articulation agreements, and a framework for thinking about block transfer of credits. According to WICHE, these materials will reflect the lessons learned by implementing the Interstate Passport® and will remain public and available to any institution at [www.wiche.edu](http://www.wiche.edu). All ten University of Hawai'i campuses are currently preparing for this transition.

## Return on Investment

### Programs and Participation

Hawai'i is active in all three WICHE Student Access Programs: The Western Undergraduate Exchange (WUE), the Professional Student Exchange Program (PSEP), and the Western Regional Graduate Program (WRGP). WICHE provides Hawai'i with a strong return on investment.

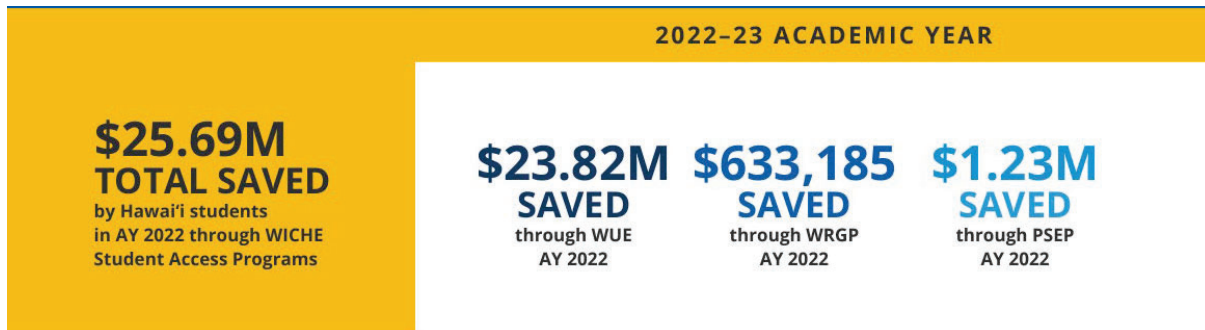


Figure 4 HAWAII'S RETURN ON INVESTMENT

Source: Western Interstate Commission for Higher Education, Hawai'i Factsheet Academic Year 2022-2023

Hawai'i has been a trusted partner in regional collaboration, resource sharing, sound public policy, and innovation since 1959. This partnership continues to save the State and our residents \$25.69 million through WICHE's Student Access Programs in academic year (AY) 2022-2023—which is a 1,851% return on Hawai'i's investment through WICHE membership dues (\$159,000/FY 2023) and appropriations from the State legislature of \$1,096,392 to support PSEP.

### Western Undergraduate Exchange (WUE)

The Western Undergraduate Exchange (WUE) is the nation's largest regional tuition-savings program, which allows students from WICHE state and Pacific Island members to enroll in participating two- or four-year public colleges or universities located in another WICHE state or territory at a discounted tuition rate. Students can choose from over 164 participating WUE institutions that offer hundreds of majors and pay no more than 150% of that school's resident tuition (often much less than the non-resident tuition rate they would normally pay). Through WUE, out-of-state study becomes more affordable for most families.



*"WUE helped me to leave my home and comfort zone and be able to study alongside people with different beliefs, characteristics, and lifestyles than me."*

Quentin - Hawai'i  
Political Science major  
University of Northern Colorado

In the academic year 2022-2023:

- 2,067 Hawai'i undergraduates saved \$23.82 million by paying up to 150% of resident tuition.
- The top three out-of-state WUE schools of choice for Hawai'i undergraduates are: the University of Nevada-Las Vegas, Northern Arizona University, and Washington State University.
- More WUE students came to Hawai'i than left. In AY 2022-2023, 3,671 out-of-state students chose WUE schools in Hawai'i compared to 2,067 Hawai'i students who chose an out-of-state WUE school.

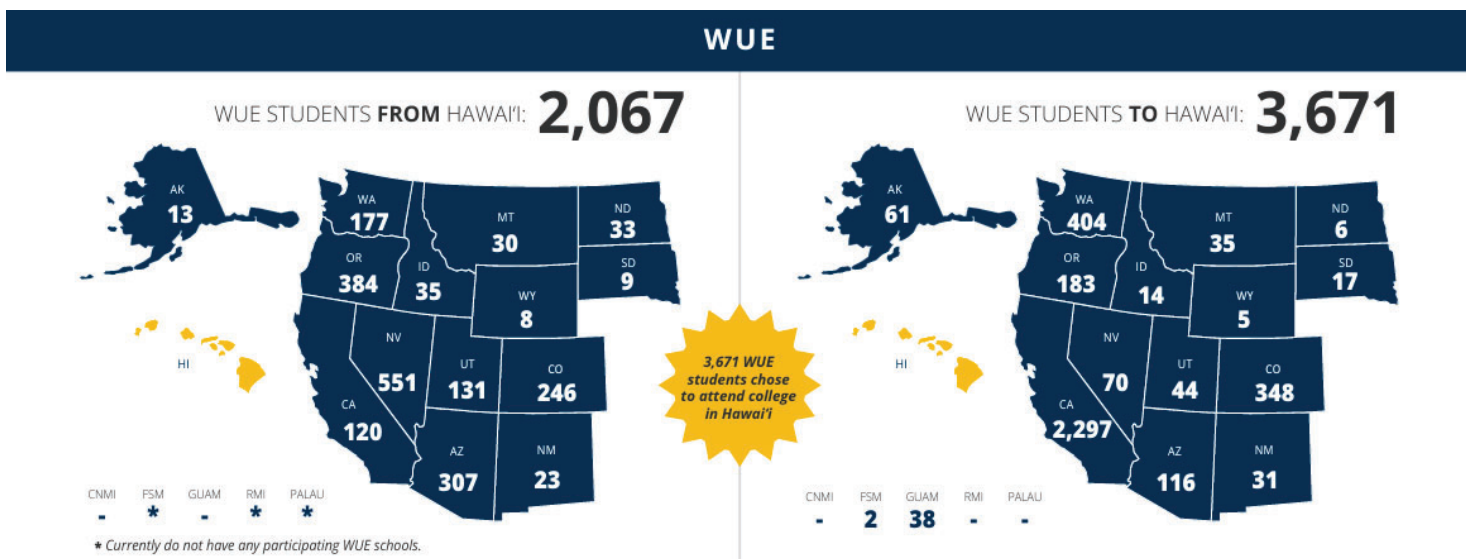


Figure 5 WUE AY 2022-2023 STUDENT DISTRIBUTION

Source: Western Interstate Commission for Higher Education, Hawai'i Factsheet Academic Year 2022-2023

Table 1. Western Undergraduate Exchange Program

Academic Year	Hawai'i Students Out-Bound to Continental U.S.	Total Savings in Tuition and Fees	U.S. Continental Students In-Bound to Hawai'i
2022-2023	2,067 students	\$23.82 million	3,671 students
2021-2022	2,141 students	\$23.7 million	3,628 students
2020-2021	2,163 students	\$22.6 million	2,905 students
2019-2020	2,450 students	\$24.4 million	2,555 students

Source: Western Interstate Commission for Higher Education, Hawai'i Factsheet Academic Year 2022-2023

Hawai'i benefits from WUE in another way—by receiving students from out of state. Hawai'i's institutions can choose how many out-of-state slots to offer and in which areas, allowing them to make the best use of their resources by accepting students in under-enrolled programs. There's also a workforce benefit for the state as students often stay in Hawai'i after graduating.

**Table 2. Breakdown by University of Hawai'i Campuses**

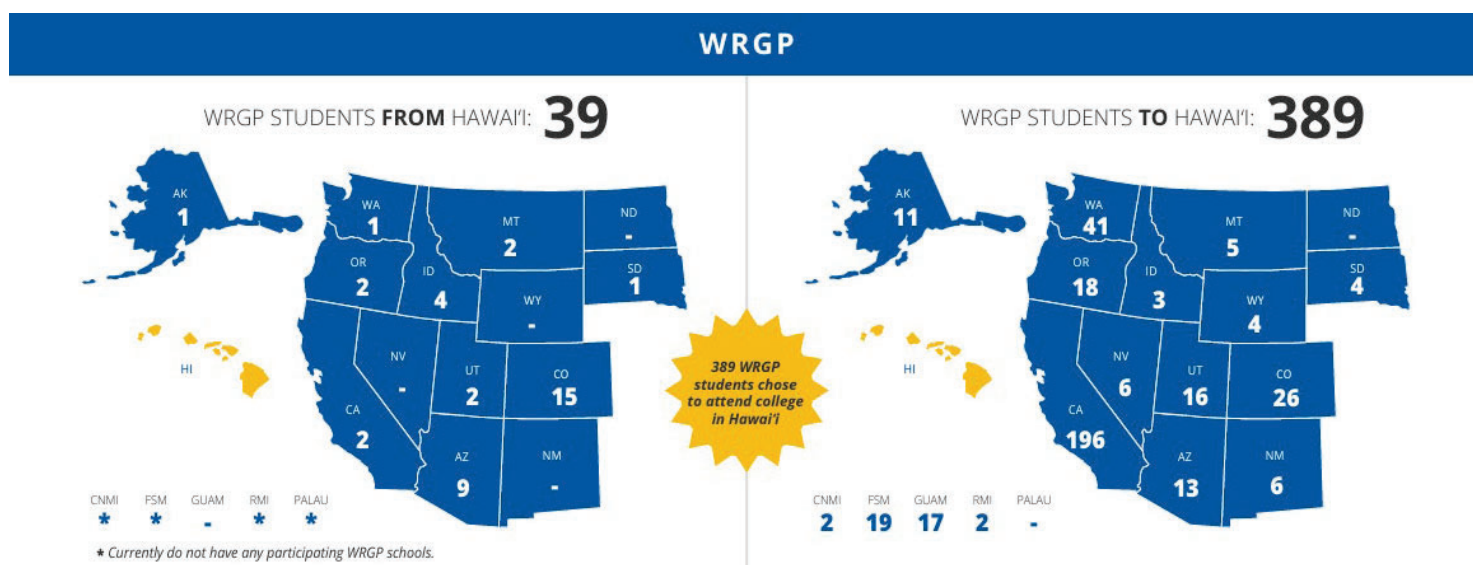
Hawai'i institutions enrolled 3,671 WUE students from other WICHE states and territories

4-Year	No. of Students
University of Hawai'i, Hilo	396
University of Hawai'i, Mānoa	3,262
University of Hawai'i, West O'ahu	11

*Source: Western Interstate Commission for Higher Education, Hawai'i Factsheet Academic Year 2022-2023*

### **Western Regional Graduate Program (WRGP)**

WRGP allows WICHE-region students to enroll out of state and pay no more than 150 % of resident tuition for more than 1,800 master's, graduate certificate, and doctoral programs at more than 60+ participating public universities. Since public-university nonresident tuition rates are typically much higher than resident rates—sometimes by 300% or more—WRGP increases affordable higher education options for students and minimizes student loan debt.



**Figure 6 WRGP AY 2022-2023 STUDENT DISTRIBUTION**

*Source: Western Interstate Commission for Higher Education, Hawai'i Factsheet Academic Year 2022-2023*

WRGP remains an important alternative for students pursuing healthcare credentials (in such programs as audiology, speech-language pathology, graduate nursing, public health, and psychology) not offered through WICHE's Professional Student Exchange Program.

Hawai'i's postgraduates participated in graduate programs through the Western Regional Graduate Program, which offers access to high-quality, distinctive programs at 60+ institutions in all WICHE states. Additionally, Hawai'i graduate programs also received a significant increase in in-bound students in 2022-2023:

- Hawai'i universities enrolled 389 WRGP students from other WICHE states.
- The top three out-of-state WRGP schools for Hawai'i students include the University of Colorado-Denver (4), the University of Arizona (7), and the University of Northern Colorado (4).

**Table 3. Western Regional Graduate Program Use**

<b>Academic Year</b>	<b>Hawai'i Graduate Students Out-Bound to Continent</b>	<b>U.S. Continent Students In-Bound to Hawai'i</b>
2022-2023	39	389
2021-2022	38	308
2020-2021	38	190
2019-2020	36	71

*Source: Western Interstate Commission for Higher Education, Hawai'i Factsheet Academic Year 2022-2023*

### **Professional Student Exchange Program (PSEP)**

PSEP provides affordable access to over 130+ healthcare professional programs in 10 eligible PSEP healthcare fields at 60 institutions—ranging from optometry to dentistry to veterinary medicine—for students in the western region.

With out-of-state tuition for some healthcare programs often exceeding resident tuition by over 300%, this can be daunting for tomorrow's health professionals. It may saddle them in debt, force them to leave their community for more lucrative opportunities, or discourage them from pursuing a passion for healing.

WICHE collaborates with 12 western states and Pacific island jurisdictions to provide a solution. Through the Professional Student Exchange Program, students pursuing careers in ten health fields—from optometry to dentistry to veterinary medicine—may enroll in participating programs across state lines and receive substantial tuition support from their home state or territory.

Through PSEP, a student can save \$34,100 to \$133,600 on tuition over the duration of a health degree study. By participating in PSEP, western states and territories benefit by inspiring and compelling graduates to return home to practice and bolster the professional healthcare workforce of their communities.

By participating in PSEP, Hawai'i offers local students the chance to realize their goal of pursuing a professional degree in a health profession not offered in our state. As a small state with limited options in health profession educational programs, this partnership with WICHE PSEP provides that bridge and access for our students to pursue educational opportunities in the fields of veterinary medicine, dentistry, and physical therapy, one of our most popular programs, just to name a few. While applicants must meet Hawai'i's residency requirements and be "certified" for PSEP participation, we have seen interest in this program grow steadily over the years.

In the academic year 2022-2023:

- Fifty-three students paid reduced tuition for healthcare studies not offered by public institutions in Hawai'i and saved \$1,228,650.
- In AY 2022-2023, two PSEP students enrolled in public programs located in Hawai'i. Institutions received \$68,350 in support fees to reduce the student's tuition costs.
- 62% of Hawai'i's PSEP graduates (from 2012 to 2021) returned home to practice; students are contractually required to return home and serve.



With the launch of Hawai'i's [WICHE online application](#), we have seen an increase in applications since applying to PSEP is a much more streamlined and straightforward process for students. Below is an overview of the number of students the state of Hawai'i has supported over the last three academic years.

**Table 4. Professional Student Exchange Program**

Academic Year	2022-2023		2021-2022		2020-2021	
Professional Field	Total No. of Hawai'i Students Supported	Support Fees Paid	Total No. of Hawai'i Students Supported	Support Fees Paid	Total No. of Hawai'i Students Supported	Support Fees Paid
Dentistry	9	\$267,167	8	\$224,000	9	\$255,267
Occupational Therapy	5	\$69,883	3	\$39,067	3	\$38,135
Optometry	12	\$236,400	10	\$192,750	9	\$169,470
Physical Therapy	13	\$214,500	13	\$209,625	12	\$189,000
Veterinary Medicine	14	\$440,700	13	\$430,950	13	\$421,200
<b>TOTAL SUPPORT</b>	53	\$1,228,650	47	\$1,096,392	46	\$1,073,072

*Source: Western Interstate Commission for Higher Education. Hawai'i Factsheet Academic Year 2022-2023*

PSEP operates with the generous support of participating legislatures of WICHE member states and territories. The Hawai'i State Legislature has consistently appropriated funds to buy down tuition costs for resident students pursuing professional degrees in selected healthcare fields. These funds are administered through WICHE and sent directly to enrolling university healthcare programs.

We annually get more than 90 to 100+ applicants who apply for PSEP funding and continue to see a high demand in the area of physical therapy; however, because of our limited budget, we are only able to award minimal spots each year.

The per-student award amounts for each eligible PSEP field are approved biennially by the WICHE Commission, which approved program support fee increases at the May 2022 WICHE Commission meeting. Program support fee increases, as outlined below, will apply to all fields that are served by PSEP, five of which Hawai'i participates in.




---

*"I am extremely grateful for the opportunity PSEP has given me to further my education and career goals. Once I graduate, I plan on returning home to O'ahu and serving my community as a physical therapist. Thanks to PSEP and the state of Hawai'i, I'll have less of a financial burden when I graduate."*

---

Christina - Hawai'i Resident  
Physical Therapy  
Pacific University



## **Future Considerations**

The University of Hawai'i's participation in WICHE, especially in PSEP, is valuable to our state because residents are the true beneficiaries. WICHE allows local students to benefit from affordable access to higher education through WICHE's three Student Exchange Programs. Interest in participating in these programs continues to grow.

Support fee costs for the PSEP programs are not fixed. It is projected that support fees per program will continue to increase by almost 3% annually, and state dues are also projected to increase by about 3% annually. Therefore, with this projected trajectory and the allocated funds we receive, we hope that, in the future, we can look at increasing support in PSEP funding levels so that we can continue to provide tuition assistance to those students who are still mid-way through their programs, while also awarding more new students each year.

***Table 5. Program Fee Increase Cost for (AY) 2023-2024 and 2024-2025 Biennium***

Professional Field	Max. No. of PSEP Funding Years Per Student	2022-2023	2023-2024	2024-2025
Dentistry	4 years	\$28,625	\$29,250	\$29,900
Occupational Therapy	2 2/3 years	\$14,975	15,300	15,625
Optometry	4 years	\$19,700	20,125	20,575
Physical Therapy	3 years	\$16,500	16,850	17,225
Veterinary Medicine	4 years	\$33,900	34,650	35,400

*Source: Western Interstate Commission for Higher Education, What's a PSEP Award Worth*