

Aloha Senator Shimabukuro and Senator Fevella.

Please accept this email as public testimony in strong support of Sanoë Marfil's appointment to serve as the Hawaiian Homes Commissioner for the island of O'ahu. Sanoë is a well respected native Hawaiian advocate, cultural practitioner and educator. She is a recognized leader within her community and beyond. She resides on Nanakuli Homestead Lands and understands the impact that Commission decision making has on the lives of our beneficiaries. She has spent less than a year as a Commissioner and yet I have observed her demonstrate tremendous integrity and courage in representing the interests of our beneficiaries. The Hawaiian Homes Commission will continue to face challenges as well as experience rewards in serving our beneficiaries. For these reasons it is important that we delegate leadership roles to our younger leaders. Sanoë is a native Hawaiian wahine with the values, cultural awareness, insight and commitment that qualifies her to serve in this capacity. Therefore, I respectfully request your support in appointing Sanoë Marfil to the Hawaiian Homes Commission.

Mahalo nui - Randy Awo
Hawaiian Homes Commissioner, Maui Island

GM-746

Submitted on: 4/8/2024 4:23:02 PM

Testimony for HWN on 4/11/2024 1:00:00 PM

Submitted By	Organization	Testifier Position	Testify
Dennis L. Neves	Testifying for Hawaiian Homes Commissioner - Kaua'i	Support	Written Testimony Only

Comments:

I am in total support of Sanoë Marfil for Hawaiian Homes Commissioner. She is a current lessee in Nanakuli homesteads and very articulate in providing positive responses to beneficiary issues. Her work in childhood education and olelo will benefit the commission moving forward. I look forward to her positive involvement in the commission's decisions and policy making for the future of our beneficiaries. Sanoë will be a great addition to the commission.

Mahalo,

Dennis L. Neves

Hawaiian Homes Commissioner - Kaua'i

**TESIMONY IN SUPPORT OF
GM 746
Thursday, April 11, 2024, 1:00pm, Rm.224, & Videoconference**

Submitting for consideration and confirmation to the Hawaiian Homes Commission,
Gubernatorial Nominee, **Sanoë Marfil**, for a term to expire 06-30-2027.

Senator Maile S. L. Shimabukuro, Chair, Senator Kurt Fevella, Vice-Chair, and
Members of the Committee on Hawaiian Affairs. I am Pauline N. Namuo, Oahu
Commissioner of the Hawaiian Homes Commission. I am submitting my testimony in
support of **Sanoë Marfil** to the Hawaiian Homes Commission.

Sanoë Marfil has an outstanding resume' of community leadership with
experience in a diverse array of skills in assisting people to succeed and these are
assets that are highly beneficial in working to assist beneficiaries. I look forward to
continue to work with her as we move forward into the future.

I support Sanoë Marfil to be a member of the Hawaiian Homes Commission.

Thank you for the opportunity to testify on behalf of **Sanoë Marfil**. Your
significant authority of Advice and Consent to this gubernatorial nominee will help
us to move forward, together, for all beneficiaries of the Trust.

Respectfully submitted,

Pauline N. Namuo
Oahu Commissioner
Hawaiian Homes Commission

Hawai'i State Senate – Committee on Hawaiian Affairs
GM 746 – Submitting for consideration and confirmation to the
Hawaiian Homes Commission, Gubernatorial Nominee, Sanoë Marfil.

RE: Strong support of GM 746

April 11, 2024

The Council for Native Hawaiian Advancement writes in enthusiastic **support** of Sanoë Marfil's confirmation for the Hawaiian Homes Commission (HHC). Her appointment would serve as a powerful voice for Native Hawaiians within the Department of Hawaiian Home Lands (DHHL).

Ms. Marfil is a nonprofit leader with nearly 20 years of experience in people, programs, and project management. Ms. Marfil is currently the chief program officer at the Institute of Native Pacific Education and Culture (INPEACE) Hawai'i, a Native Hawaiian non-profit organization committed to improving the quality of life for Native Hawaiians through community partnerships that provide educational opportunities and promote self-sufficiency. Throughout her career, she has overseen state, federal, and foundational grants as well as assumed responsibility for deliverables at both a program- and division-level. Ms. Marfil will bring a much-needed professional expertise to the Commission.

Given the Department's significant task of utilizing the historic \$600 million appropriation and addressing its numerous challenges, it is crucial for Nānākuli and the Westside homesteads to have effective representation. Sanoë Marfil grew up in Wahiawa and Nānākuli, where she currently resides with her family. She is an active alumna of Nanakuli High and Intermediate School, a graduate of Leeward Community College and University of Hawai'i West O'ahu, and is currently pursuing a doctoral degree in Education in Leadership for Change at Fielding Graduate School. Her deep community roots and relationships serve as a strong foundation to her ability to establish community partnerships and collaborations that more effectively serves the community in a holistic manner.

Perhaps most importantly, Ms. Marfil is already a strong voice for the Native Hawaiian community. She is currently the President of the Nānāikapono Hawaiian Civic Club, which actively aims to support organizations that improve the social and economic welfare of native Hawaiians as well as encourage civic engagement and legislation beneficial to Nanakuli and Hawaiian communities. Ms. Marfil is also an advocate for 'Ōlelo Hawai'i with experience in Hawaiian culture- and place-based pedagogy. Finally, Ms. Marfil is a DHHL beneficiary herself and has extensive personal experience with the Department.

For these reasons, we humbly ask that you **SUPPORT GM 746** and Sanoë Marfil's confirmation. Her appointment would be a great benefit to the Commission, the State, and housing in Hawai'i.

Mahalo,


Kūhiō Lewis
Chief Executive Officer, CNHA

GM-746

Submitted on: 4/1/2024 11:51:11 AM

Testimony for HWN on 4/11/2024 1:00:00 PM

Submitted By	Organization	Testifier Position	Testify
Lu Ann Mahiki Lankford-Faborito	Testifying for Makaha Hawaiian Civic Club	Support	Written Testimony Only

Comments:

strong support as an active civic club member community leader, based in education and nonprofit expertise so happy to support her nomination,



Josiah Hoochuli Pelekikena
Ahupua'a O Nānākuli Homestead
89-137 Nānākuli Ave
Wai'anae, Hawai'i 96792

April 10, 2024

Kali Watson
Chairman
Department of Hawaiian Homelands
91-5420 Kapolei Parkway
Kapolei, HI 96707

Dear Chairman Kali Watson,,

We, the undersigned members of the Ahupua'a O Nānākuli Homestead, write to offer our highest recommendation and endorsement for Sanoë Marfil as Commissioner for the Department of Hawaiian Home Lands. With deep respect and admiration for Sanoë's unwavering dedication and remarkable contributions to our community, we wholeheartedly support her candidacy for this esteemed position.

As individuals deeply rooted in the Nānākuli Homestead community, we have had the privilege of witnessing Sanoë's tireless efforts and profound commitment to serving our community. Her generational ties to Nānākuli, coupled with her professional experience as Chief Program Officer at INPEACE (Institute for Native Pacific Education and Culture), uniquely position her as an exemplary leader capable of effecting positive change and advocating for the interests of Hawaiian residents.

Sanoë's expertise in management, interpersonal relationships, community co-design, and program development has been instrumental in advancing initiatives that uplift and empower our community members. Her collaborative approach and ability to foster

meaningful partnerships have contributed significantly to the progress and prosperity of our community.

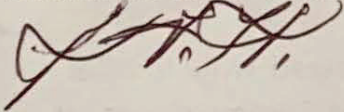
As Commissioner for the Department of Hawaiian Home Lands, Sanoë Marfil would bring invaluable insights, passion, and expertise to the table. Her dedication, integrity, and deep-rooted commitment to serving Hawaiian communities make her exceptionally qualified for this role.

We wholeheartedly endorse Sanoë Marfil's candidacy and believe that she will serve with distinction, integrity, and a steadfast commitment to advancing the interests of Hawaiian residents. We urge you to consider her candidacy favorably for this vital position. In addition, her membership with Nānāikapono Hawaiian Civic Clubs adheres her to our community.

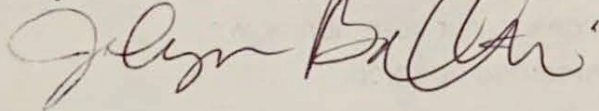
Thank you for your attention to this matter. Please do not hesitate to contact us if you require any further information or assistance.

Sincerely,

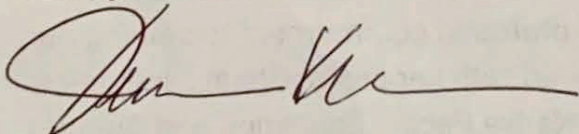
Josiah Ho'ohuli - Pelekikena



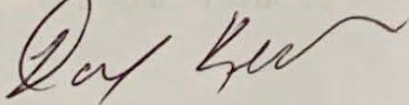
Jolynn Ballenti - Hope Pelekikena



Jewelynn Kirkland - Kakau 'Olelo



David Keola - Pu'uku



GM-746

Submitted on: 4/8/2024 6:44:09 PM

Testimony for HWN on 4/11/2024 1:00:00 PM

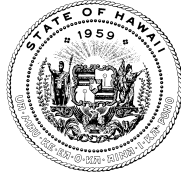
Submitted By	Organization	Testifier Position	Testify
Lu Ann Mahiki Lankford-Faborito	Testifying for Makaha Hawaiian civic club	Support	Remotely Via Zoom

Comments:

absolute strong support

JOSH GREEN, M.D.
GOVERNOR
STATE OF HAWAII
*Ke Kia'āina o ka Moku'āina 'o
Hawai'i*

SYLVIA J. LUKE
LT. GOVERNOR
STATE OF HAWAII
*Ka Hope Kia'āina o ka Moku'āina
'o Hawai'i*



KALI WATSON
CHAIRMAN, HHC
Ka Luna Ho'okele

KATIE L. DUCATT
DEPUTY TO THE CHAIRMAN
Ka Hope Luna Ho'okele

STATE OF HAWAII
DEPARTMENT OF HAWAIIAN HOME LANDS

Ka 'Oihana 'Āina Ho'opulapula Hawai'i

P. O. BOX 1879
HONOLULU, HAWAII 96805

TESTIMONY OF KALI WATSON, CHAIRMAN
HAWAIIAN HOMES COMMISSION
BEFORE THE SENATE COMMITTEE ON HAWAIIAN AFFAIRS
HEARING ON APRIL 11, 2024 AT 1:00PM IN CR 224

IN SUPPORT OF

GM 746

for consideration and confirmation to the
Hawaiian Homes Commission,
Gubernatorial Nominee, **SANOE MARFIL**,
for a term to expire 6-30-2027

April 11, 2024

Aloha Chair Shimabukuro, Vice-Chair Fevella, and members of the Committee:

Thank you for the opportunity to provide testimony in support of Sanoe Marfil as Commissioner for the island of O'ahu on the Hawaiian Homes Commission.

The Department of Hawaiian Home Lands is confident that Ms. Marfil will fulfill her fiduciary duties as a Commissioner on the Hawaiian Homes Commission through her strong reverence for the Hawaiian Home Lands Trust, the Department of Hawaiian Home Lands (DHHL), and the beneficiaries of the Hawaiian Homes Commission Act, 1920, as amended (HHCA).

Ms. Marfil is a team leader, master collaborator, and strategist with 20 years of experience in people, programs, and project management. She currently serves as Chief Program Officer at the Institute for Native Pacific Education and Culture (INPEACE), a Native Hawaiian nonprofit organization where she has served for 14 years. Rooted in culture and community, Ms. Marfil is a beneficiary of the HHCA, an active alumni of Nānākuli High and Intermediate school, President of the Nānāikapono Hawaiian Civic Club, and an advocate of 'Ōlelo Hawai'i.

Ms. Marfil brings a broad community perspective to the Hawaiian Homes Commission and DHHL is certain that her skills and experience in strategic programming as well as budget and grant management will help to guide DHHL in serving beneficiaries of the HHCA.

Department of Hawaiian Home Lands
April 11, 2024
Page 2

DHHL looks forward to continuing to work with Sanoë Marfil on the Hawaiian Homes Commission and we respectfully ask your committee to advise and consent to this nomination. Thank you for your consideration of our testimony.

Wai'anae Valley Homestead Community Association
P.O. Box 601, Wai'anae, HI 96792

Sen. Maile Shimabukuro
Re: Sanoë Marfil

Board of Directors

President

Jan Makepa

Vice President

Keola Rosario

Secretary

Linda Jury

Treasurer

Kehau Hanohano

Sgt. of Arms

Vacant

Directors

Georgie Navarro

Lokana Keliikoa-Pua

Welina Mai e Senator Shimabukuro,

4/1/2024

We are most pleased to have been informed of Governor Josh Green's nomination of Sanoë Marfil for DHHL's O'ahu Commissioner, GM746.

The Wai'anae Valley Homestead Community Association humbly supports Sanoë's nomination and confirmation.

Please keep/present this letter as testimony on behalf of our Homestead's support.

Mahalo,



Pelekikena, WVHCA

'A'ohe hana nui ke alu 'ia.

There is no task too great when done together.



Keaukaha Pana'ewa Farmers Association

PO Box 6844, Hilo HI 96720

April 10, 2024

Senate Committee on Hawaiian Affairs
State Capitol
415 South Beretania Street
Honolulu, HI 96813

RE: GM746 Support Testimony-Sanoë Marfil Appointment to the Hawaiian Homes
Commission

Aloha Chair Shimabukuro and Committee Members,

This is a request for your recommendation of Sanoë Marfil's appointment to the Hawaiian Homes Commission for confirmation to the Senate.

Ms. Marfil has tremendous community support and she will be an invaluable asset to the Commission. Ms. Marfil brings a set of skills and community experience that the Commission needs.

KPFA represents over 1,000+ native Hawaiian Homestead beneficiaries and their 'ohana on agricultural Hawaiian Home Trust Lands in Pana'ewa, Hawai'i Island. KPFA is a Hawaiian Homes Commission Act Beneficiary Association and Homestead Association controlled by beneficiaries, as defined by the Hawaiian Home Lands Recovery Act, 109 Stat. 537. KPFA is registered as a Homestead Beneficiary Association with the U.S. Department of Interior, 43 CFR §§ 47.10 and 48.6.

We appreciate your consideration of this request.

Sincerely,

Maile Lu'uwai
President
Keaukaha Pana'ewa Farmers Association



NANĀNĀKULI-MĀ'ILI NEIGHBORHOOD BOARD NO. 36

c/o NEIGHBORHOOD COMMISSION • 925 DILLINGHAM BLVD, SUITE 160 HONOLULU, HI 96817
TEL: (808) 768-3710 • FAX: (808) 768-3711 • www.honolulu.gov/nco

April 10, 2024

Hawaii State Senate
Senate Committee on Hawaiian Affairs Committee
Senator Maile Shimabukuro, Chair
Senator Kurt Fevella, Vice Chair
Senator Les Ihara, Jr.
Senator Jarrett Keohokalole
Senator Herbert M. "Tim" Richards, III

Subject: GM746: Submitting for consideration and confirmation to the Hawaiian Homes Commission, Gubernatorial Nominee, SANOE MARFIL, for a term to expire 06-30-2027.
Nānākuli-Mā'ili Neighborhood Board No. 36 unanimously **SUPPORTS**

On February 20, 2024, the Nānākuli-Mā'ili Neighborhood Board No. 36, unanimously voted in support of the appointment of Ms. Sanoë Marfil to the Department of Hawaiian Homes Commission. During the interim, Ms. Marfil has already proven herself to be a dedicated and effective leader in this role. Her experience, passion, and deep understanding of the needs of the beneficiaries make her an ideal candidate for this important position.

In light of her outstanding qualifications and demonstrated commitment to serving our beneficiaries, we, the Nānākuli-Mā'ili Neighborhood Board No. 36 respectfully urge the Senate Committee on Hawaiian Affairs to support the confirmation of Ms. Sanoë Marfil to the Hawaiian Homes Commission with the term expiring, June 30, 2027. Her leadership will undoubtedly benefit the commission and beneficiaries.

Thank you for your attention to this matter.

Mahalo,

A handwritten signature in black ink, appearing to read "Samantha DeCorte".

Samantha DeCorte, CHAIR
Nānākuli-Mā'ili Neighborhood Board No. 36
925 Dillingham Boulevard, Suite 160
Honolulu, HI 96817
Direct: (808) 306-9604
Email: sdecorte@hotmail.com

CC: Senator Maile Shimabukuro
Senator Kurt Fevella
Senator Jarrett Keohokalole
Senator Les Ihara, Jr.
Senator Herbert M. "Tim" Richards
Representative Darius Kila

GM-746

Submitted on: 4/10/2024 11:47:30 AM

Testimony for HWN on 4/11/2024 1:00:00 PM

Submitted By	Organization	Testifier Position	Testify
Mapuana Tector	Testifying for Nanakuli High & Intermediate School PTSA	Support	Remotely Via Zoom

Comments:

Aloha Senator Shimabukuro,

It gives me great joy to speak on behalf of our Nanakuli High & Intermediate School PTSA (Parent Teacher Student Association) with unanimous support for Sanoë Marfil. As a leader in my community and a volunteer of various organizations such as the NHIS PTSA also a current member of the Nanaikapono Hawaiian Civic Club My personal experiences under Sanoë Marfil while she was the President of the NHCC she showed great leadership skills. Again, everything that I saw was her volunteerism and dedicated time to the NHCC meant a lot and the time away from her *e na ohana* plus the many other projects at home shows her exemplary female leadership skills.

Furthermore, with the economy in Hawaii, how is it that a Commissioners positions at the Department of Hawaiian Homes is volunteered and not a paid position is overwhelmingly intense to say the least.

It goes without saying, if Sanoë Marfil is willing to sacrifice her unpaid time toward making a difference for our native hawaiian people also known as the Beneficiaries for hawaiian home land it is commendable.

In closing, the Nanakuli High & Intermediate School PTSA over a hundred members duly support Sanoë Marfil as a beneficiary herself, to be placed on the DHHL as an Oahu Commissioner as volunteer to serve our Beneficiaries. That is the recommendation set forward.

Mapuana Tector, NHIS PTSA President



April 10, 2024

Committee on Hawaiian Affairs (HWN)

Chair - Senator Maile Shimabukuro

Vice Chair - Senator Kurt Fevella

RE: GM 746 - Consideration and confirmation to the Hawaiian Homes Commission-Sanoe Marfil

Aloha mai e Chair & Vice Chair,

SCHHA and AHHL are the 2 largest and most representative policy voices on issues impacting trust lands as defined under the Hawaiian Homes Commission Act of 1920 (HHCA). SCHHA founded in 1987, and AHHL founded in 2008 represent the interests of 10,000 trust land lessees and 28,000 on the waitlist. Each is registered as federally defined homestead associations under 43 CFR Part 47/48 with the Department of Interior. SCHHA was founded in 1987 by Homestead Beneficiary Association (HBA) leaders from every island.

As a newly appointed homestead leader serving as Maui/Lana'i Moku-puni Governing Council 2023-2027 as well as Secretary on the Association of Hawaiians for Homestead Lands (AHHL) Waitlist. I am pleased to present this letter of support to **GM 746 of the Hawaiian Homes Commission for Sanoe Marfil for a term to expire on 06-30-27**. Attached are submittals to Governor Green's office in February to advocate for her consideration. Along with the Kahea petition on January 16, 2024. This documents the strong opposition from beneficiaries towards using our State DHHL resources towards the purchase of the Waipouli property that would displace 82 Kaua'i families, this was unacceptable for native Hawaiians to have our resources once again diverted away from the mission of the HHCA, over the issuance of homestead lots to our Waitlist citizens. It is important to have representation and leadership that engages with beneficiaries to consider the voices in support of the community of which she serves. Lastly, it is equally important how Commissioner Marfil recognizes the value of our collaborative efforts to bring unified action of HBAs serving the entire HHCA lahui despite the overwhelming pressure as a woman in this male dominated Commission.

Mahalo nui for your consideration to support Sanoe Marfil. Policy not politics drive this opportunity to empower beneficiaries to not only advocate, but to build upon our Congressional Delegate Prince Jonah Kuhio Kalaniana'ole vision when he championed the Hawaiian Homes Commission Act 104 years ago.

Me ke aloha,

Kainoa MacDonald - SCHHA Maui/Lana'i Moku-puni Council

Sovereign Council of Hawaiian Homestead Associations (SCHHA)-Maui/Lana'i Moku-puni Council

Association of Hawaiian for Homestead Lands (AHHL)-Moku Honu Director/Secretary

DATE: 02/26/24

Aloha Governor Josh Green,

This is a request for you to appoint Sanoë Marfil to represent O'ahu on the Hawaiian Homes Commission. We understand the appointment will be sent to the Senate Committee on Hawaiian Affairs.

With Chair Kali Watson making changes to the original Act 279 that was approved in 2022 by the Hawaiian Homes Commission. As a beneficiary on the Maui waitlist it is imperative to stay the course and not change or delay development projects that were already approved. Having another female on the Hawaiian Homes Commission. At a recent beneficiary meeting via zoom she joined statewide beneficiaries and homestead association leaders and shared her willingness to learn more of the tenets of the Hawaiian Homes Commission Act of 1920, engage with our communities which is very promising. This direction is important to gain a better understanding of what the island communities need. Commissioner Marfil most recently engaged with SCHHA leadership & beneficiaries across the islands on last month's Moloka'i Mokupuni, where she shared her commitment to protect the Hawaiian Homes Commission Act. She also supported the beneficiary opposition on January 16, 2024, DHHL Hawaiian Homes Commission Meeting agenda item C-1 on kupuna housing at Waipouli.

Your consideration of our request is greatly appreciated.

Mahalo,



Kainoa Lei MacDonald
Hawaiian Home Lands Waitlister
808-419-8646
808divergentgroup@gmail.com



Summary Report of the
AHHL Waitlist Initiative

Respectfully Opposing
Hawaiian Home Land Resources of \$27.4M
to New Lunalilo Corporate Team

January 16-17, 2024
Hawaiian Homes Commission Meeting

AHHL Waitlist HBA Truths

The State of Hawaii continues to keep over 29,000 native Hawaiians on a Waitlist to receive a homestead lot award to build a home, a farm or a ranch, promised by the federal government in 1920 under the Hawaiian Homes Commission Act (HHCA), and promised by the State of Hawaii under the 1959 Admissions Act as a condition of Statehood.

Over the last 65 years, one of the many failings of the State of Hawaii, Governor after Governor, DHHL Director after DHHL Director, is the persistent disregard of the HHCA, its Lands and its People. This ‘Broken Promise’ includes the failure to dedicate all resources, time and energy to the basic duty of the State of Hawaii - the development and issuance of lot awards to native Hawaiians on the State Waitlist.

Instead, the State DHHL continues to direct time and resources away from its primary mission of land distribution to eligible Waitlist Beneficiaries and to Homestead Beneficiary Associations (HBAs), which has resulted in the suffering of 29,000 HHCA Beneficiaries on the State Waitlist.

Premise for the AHHL Waitlist HBA Aole Petition

Placed on the January 16th agenda of the Hawaiian Homes Commission, by the State DHHL under the Governor Green Administration, together with a team consisting of the Lunalilo Trust, its new nonprofit affiliate and a proposed limited partnership structure, all of which are non-HHCA beneficiary organizations, to obtain authorization to:

1. Divert a grant of \$25M from HHCA Beneficiary resources to the Lunalilo team to purchase a \$44M rental apartment asset of 82 apartments on the island of Kauai.
2. Divert an additional \$2.4M to the Lunalilo team to hire staff and consultants to package a Low-Income Housing Tax Credit (LIHTC) application toward the asset purchase.
3. Issue a 65-year, \$1 per year general lease to components of the Lunalilo team and commit to giving a right of first refusal to purchase the asset at the 15-year mark for a “nominal” fee, entirely privatizing the asset.

This proposal to subsidize a new start-up corporate affiliates of the Lunalilo team, would allocate \$27.4M of HHCA Beneficiary resources, to acquire an existing 82-unit apartment complex without capital investment by the Lunalilo team itself, nor analysis of financial or operational capacity. Further, it privatizes the entire vertical asset to the Lunalilo team at the 15-year mark with a \$1 dollar per year ground lease for 65 years.

AHHL Waitlist HBA Basis of Opposition

The AHHL Waitlist HBA, representing the interests of native Hawaiians on the Waitlist opposed the proposal as follows:

- A. Off HHCA Mission.** The proposal does NOT result in a single issuance of a homestead lot to the State Waitlist of 29,000 native Hawaiians, the highest purpose and mission of the State DHHL. It directs HHCA Beneficiary resources to rental housing with the intent of renting units to Waitlist Beneficiaries.
- B. Non-Beneficiary Corporate Asset Control.** The proposal will result in a \$44M rental property asset controlled by the Lunalilo team, without any direct investment of its own, nor any partnership or inclusion of any HBA organization. Of significant note - the Lunalilo Trust has long divested itself of

AHHL is a Homestead Beneficiary Association founded in 2008 dedicated to Ending the Hawaiian Home Lands Waitlist of 29,000 native Hawaiians enrolled for a Residential, Farming or Ranching Homestead

serving native Hawaiians or Hawaiians, as evidenced by its modern-day mission, vision and strategic plan dedicated to serving any kupuna in the State of Hawaii.

C. Lack of Government Transparency. The proposal was developed in a vacuum, without consultation with HBAs, nor consideration of the expertise and priorities of the HHCA or its Beneficiaries. In fact, HBAs and HHCA Beneficiaries were informed about the proposal on January 15, 2024 through the online posting of the Hawaiian Homes Commission 449-page agenda document, with the meeting starting the following morning of January 16, 2024.

Hawaiian Homes Commission Action

On January 16, 2024, the State DHHL request to authorize \$27.4M was not approved, with Commissioners voting as follows:

- | | | |
|---------------------|--|--|
| 5 Opposed: | Randy Awo, Maui
Zachary Helm, Molokai
Michael Kaleikini, East Hawaii | Dennis Neves, Kauai
Sanoe Marfil, Oahu |
| 4 Supported: | Kali Watson, At Large Chair
Makai Freitas, West Hawaii | Pauline Namuo, Oahu
Walter Kaneakua, Oahu |

AHHL Waitlist HBA recognizes the dedication of the five Commissioners that opposed the State DHHL request based on the best interests of HHCA Beneficiaries on the State Waitlist. Further, AHHL requests the four Commissioners that supported the State DHHL request, to consider the manao of HHCA Beneficiaries, long suffering on the State Waitlist.

Summary of AHHL Waitlist HBA Aole Petition Testimonies

The AHHL Waitlist HBA leadership was extremely troubled by the lack of transparency by the State DHHL and its intention to direct valuable Hawaiian Home Land resources away from issuing lots to the State Waitlist, and instead funding a non-beneficiary corporate team to rent apartments to the Waitlist.

On the evening of January 15, 2024, AHHL issued a call for Petition Testimonies describing the State DHHL request to the Hawaiian Homes Commission, to oppose with the following statement:

“I oppose Hawaiian Homes Commission Agenda Item C-1 – `Aole to providing \$25M of our NAHASDA funds to a \$44M apartment asset acquisition wherein no beneficiary consultation was done, no partnership with HBAs like the Waitlist is included in the proposal and the \$25M allocation WILL NOT RESULT IN A HOMESTEAD AWARD TO A BENEFICIARY ON THE WAITLIST.”

Following is a sampling of comments included in the 130+ Petition Testimonies received within 5 hours:

1. *Hewa!!! Give the people on the waitlist their aina!*
2. *My Mom is on the Kaua’i waitlist. I am her successor. She has waited 40 years. No to giving her a rental apartment, give her birthright - a vacant lot. We can build our own home.*
3. *I oppose! What happened to Lunalilo trust lands inventory and money?*

AHHL is a Homestead Beneficiary Association founded in 2008 dedicated to Ending the Hawaiian Home Lands Waitlist of 29,000 native Hawaiians enrolled for a Residential, Farming or Ranching Homestead

4. *Strong opposition! #1 priority of money and lands should always be waitlisters receiving 99-year lease to pass on to their descendants. Rentals are month to month and leave no legacy successorship. Rentals transfers land, monies and ownership to the developer. Developer becomes the beneficiary.*
5. *My kupuna waited 43 years on the list and was 75 when called for an award. My Aunty is 80 and still waiting 50 years. I'm the successor to my dad lease. My mana'o from my ohana they want to pass on their lease for another 99 years not give it to a non-homestead association or homestead waitlist org. I maybe young but I see rental is not getting my kupunas off the wait list*
6. *Use our Trust land and Trust money for Homeownership not rentals*
7. *I'm on the Agricultural Waitlist on Kaua'i since 1980. We haven't had any ag lots awarded here since 1984. Please commit all our lands and our funding towards accelerating awards to all our waitlists and not to organizations that are not made up exclusively of and dedicated to trust beneficiaries, waitlisters and their families.*
8. *Outside entities need to get monies elsewhere. We need to take care the waitlist.*
9. *Let's get people off the waitlists and on an awarded lease*
10. *We want our land to live on. Please don't allow private corporations to take what has been promised to all of us on the waitlist. This is so wrong on so many levels!*
11. *'Aole to taking the opportunity for my child's land to be given away so a non-Hawaiian company can profit.*
12. *My sisters and brothers, all in our 60's are awaiting leases for Hawaiian Homestead lands. We haven't been on the list as long as some but are still waiting, nonetheless. We all have kids too, many who cannot qualify.*
13. *I strongly oppose. We are giving up too much of our money and resources. Our lands MUST be given to beneficiaries only, not an outsider. My mother, father, sister and brother are on the waitlist for Maui and Molokai. They want their Lease not a rental!*
14. *DHHL monies should not be used for this project. Lunalilo should fund raise through Federal, State, or Private entities. The Lunalilo does service kupuna, but their services are not directly tied to the DHHL lessee's or it's waitlist. Strongly oppose.*
15. *My mom comes from a family of 6 siblings, all HHCA eligible Hawaiians. We are from Kauai, hundreds of cousins, aunties and uncles, from and on Kauai. This is an insult to give our money to anyone, especially non-homestead mission organizations. NAHASDA was championed by senator Inouye for our people, our homestead organizations, not to grant \$25M as some bailout to Lunalilo or anyone else to own property. I'm sorry, it's difficult to speak against the powerful, but my kids need me to say no.*
16. *C-1 or any future planning of our lands do not belong to the State for deals with outsiders, it belongs to the Beneficiaries of the Trust. NO ONE ELSE. The State of Hawaii is not the Beneficiary. Stop bullying Commissioners by giving them lack of information at last minute. And forcing them to make decisions without our input. I'm already repeating myself and now ask that it is in writing that the State gives our commissioners one month (30 days) in advancement notice of information, appropriate time*

for any agenda item or it shall be rejected. This affects me deeply. They should never be rushed into any compromise of my Trust. We take our time to make the right decision. S T O P it!

17. *DHHL is taking the successorship rights from the Kupuna who has been on the waitlist for many years. This is so unfair and insensitive to those who have waited so long. You are trying to sugarcoat the wait listers and taking advantage of their need for health care by placing them in a home. They are supposed to be in their own homes with their families as Act granted. Minamina!*
18. *I received my lease recently. Any/all monies should be used to get beneficiaries onto Hawaiian home lands so they can enjoy the benefits of home ownership.*
19. *But will this result in getting more waitlisters off the list? Or is it just a band-aid solution? Use the money for actually getting them into something that's not just transitional.*
20. *Put our Hawaiians on the aina like how Prince Kuhio wants it to be.*
21. *This is HEWA!! You are wasting money to give other entities, instead of helping our people to build their own homes and their lands!*
22. *I'm 55 and still waiting, let's stop with the finagling and get the Hawaiians on Hawaiian Home Lands NOW!*
23. *My mana'o is any lands of Hawaiian Homes Trust should be in partnership with HBA's Homestead Beneficiary Associations First!*
24. *Our lands should NOT be used for purposes other than leases for Waitlisters. Our monies should NOT be used for purposes other than putting Waitlisters on the aina.*
25. *I have been trying to get NAHASDA help and couldn't am still waiting for our chance to build on a lease I received in.2004.*
26. *DHHL NEEDS TO STOP THE PRACTICE OF DESIGNATING OTHER THAN THE BENEFICIARIES THEMSELVES, THE RIGHT TO LEASE, MANAGE, FACILITATE, OCCUPY OR BENEFIT FROM OR OF HAWAIIAN HOME LANDS!*
27. *I think it's another way that our people are being robbed of our rights. This so called kupuna project does not give their children's or future generations the right to have homes kept within their ohana. The commission is definitely not thinking of way the Hawaiian homelands was put in place, and another reason of why so much of our people are dying before even getting a chance to their birth rights of being native Hawaiian.*
28. *We strongly oppose Agenda Item C-1. Stop worrying about how you can make more money and start worrying about awarding the lands that has been in your hands for what now, over a hundred years?*
29. *The funds you received, we hoped would put infrastructure on all the Hawaiian Home lands so at least Hawaiians can move onto the land, whether they have to build themselves or not. Do it please!! Mahalo!!*
30. *Help us who are still waiting.*
31. *I have three wait listers for over 30 years*

32. *Take care of our people on the waitlist FIRST!*
33. *Use the money for those on the list as it was intended.*
34. *My ohana line has been cut off from HHCA trust lands, due to the state of Hawaii DHHL inability to award leases. My 50% plus great grandparents died on the death list, effectively ensuring our entire lineal descendants never access HHCA trust lands.*
35. *STOP THE MADNESS!*
36. *I am a lessee of a Hawaiian homes property on Lanai. 3 of my 5 children have 50% Hawaiian blood quantum and are / will become beneficiaries or are currently on the wait list. I am in strong opposition to item C1 because I believe that there are many more of our kanaka who would benefit from this land.*
37. *You need to concentrate on fixing your current system and getting beneficiaries into homes instead of starting new projects. How do you expect beneficiaries to support your projects if they don't feel supported? Also, Kupuna could stay with family.*
38. *WE JUST WANT DHHL TO DO RIGHT TO US, THE BENEFICIARY AS WHAT WAS INTENDED TO BY HHCA*
39. *On behalf of the Maui-based beneficiary nonprofit Pa'upena Community Development Inc., I oppose this and any other Department of Hawaiian Home Lands (DHHL) and Hawaiian Homes Commission vote, approval or action that uses Hawaiian Homes Commission Act (HHCA) federal trust lands, trust monies and/or DHHL staff resources toward rentals. The latter rentals (1) are counter to the trust mission to reconnect native Hawaiians with ka'aina ho'oku'ono'ono (homelands) in 99- and/or 198-year multigenerational homestead leases; (2) are counter to the State of Hawai'i's and Hawaiian Homes commissioners' fiduciary responsibility to the 29,000 waitlist beneficiaries, and (3) diminish the trust entitlements and rights of said 29,000 waitlisters, which means Congress must approve any such rentals. These proposed rentals could engender a Kalima-type litigation resulting in another \$328 million settlement for negligence on the part of the State, DHHL and the commissioners. The latter statement may sound like extortion, but our beneficiary contentions are, in fact, (1) a call for fiduciary accountability by the State, the department and the commission, and (2) resistance to theft of trust lands, funds and resources.*

To obtain a copy of the more than 130 Petition Testimonies Submitted to the Hawaiian Homes Commission meeting record, which include individual names, contact ahhlwaitlist@gmail.com.

AHHL Waitlist HBA Closing Statement

We call on Governor Green and DHHL Director Watson to concentrate all resources and energies on the mission of the HHCA – to issue homestead land awards to 29,000 HHCA Beneficiaries. Rental housing with our resources is NOT a priority of the HHCA or those of us on the State Waitlist.

We need every penny of every resource available to be directed to the mission of the HHCA, which is homesteading for eligible HHCA Beneficiaries on the State Waitlist. Mahalo.



April 10, 2024

Committee on Hawaiian Affairs (HWN)
Chair - Senator Maile Shimabukuro
Vice Chair - Senator Kurt Fevella

RE: GM 746 - Consideration and confirmation to the Hawaiian Homes Commission-Sanoe Marfil

Aloha mai e Chair & Vice Chair,

SCHHA is the largest and most representative policy voices on issues impacting trust lands as defined under the Hawaiian Homes Commission Act of 1920 (HHCA). SCHHA was founded in 1987 and registered as federally defined homestead associations under 43 CFR Part 47/48 with the Department of Interior. SCHHA was founded in 1987 by Homestead Beneficiary Association (HBA) leaders from every island.

As a newly appointed homestead leader serving as Oahu Mokupuni Governing Council 2023-2027 and the current President of Kaupe'a Homestead Association. Please accept my letter of support to **GM 746 of the Hawaiian Homes Commission for Sanoe Marfil for a term to expire on 06-30-27**. Attached is the 'Aole petition on January 26, 2024, in support of the Association of Hawaiian for Homestead Lands (AHHL) waitlist organization whose mission is to end the DHHL waitlist. This document is proof of the 250 + who participated in strong opposition from homestead leaders and waitlist beneficiaries towards using our State DHHL resources towards the purchase of the Waipouli property that would displace 82 Kaua'i families, this was unacceptable for native Hawaiians to have our resources once again diverted away from the mission of the HHCA, over the issuance of homestead lots to our Waitlist citizens. I personally delivered this summary report to the Legislative & Executive branch along with 2 other community leaders.

It is imperative as a representative of my homestead to build a collaborative approach with our Hawaiian Homes Commissioner to engage with lessees on Hawaiian Homes Trust Lands who have community concerns to be heard, to have a seat at the table, to bring solutions that support our community needs. Lastly, it is equally important how Commissioner Marfil recognizes the value of our advocacy efforts to bring unified action among HBAs that serve the entire HHCA lahui.

As a native Hawaiian woman her strong foundation rooted to her community speaks volumes on her commitment to serve in this capacity. With the mounting kuleana facing this Commission tasked to deliberate the housing crisis, budget cuts, skyrocketing cost to build homes. I believe Sanoe's belief in Akua (the creator) will guide her decision making to be pono in this male dominated Commission.

Mahalo nui for your consideration to support Sanoe Marfil.

Me ke aloha,

Iwalani Laybon-McBrayer

Iwalani Laybon-McBrayer - SCHHA Oahu Mokupuni Council & Kaupe'a Homestead Association

Sovereign Council of Hawaiian Homestead Associations (SCHHA) Oahu Mokupuni Council

Kaupe'a Homestead Association - President

Release: January 29, 2024

Statement of AHHL Waitlist Homestead Beneficiary Association

Re: Action of the State DHHL Agency on January 16 & January 26, 2024
Opposition to Direct \$25M toward the Purchase Waipouli Apartments on Kauai

Aloha,

The Association of Hawaiians for Homestead Lands (AHHL), founded in 2008, is a national Homestead Beneficiary Association (HBA) registered under 43 CFR Part 48.6 with the U.S. Department of Interior, to represent the interests and provision of services to native Hawaiian citizens defined in the Hawaii Constitution and the Hawaiian Homes Commission Act of 1920 (HHCA). Our mission is dedicated to *Ending the Hawaiian Home Lands Waiting List*, of which 29,000 of our people languish on a State government Waitlist to receive a homestead lot award.

We share our deep disappointment in the administration of **Governor Green** and his State Department of Hawaiian Home Lands (DHHL) agency, for its lack of transparency and lack of engagement with the citizens and HBA organizations most impacted by government decisions, actions and inactions as they relate to the HHCA. **Governor Green** can do better, and we extend our hopefulness in his leadership.

On Friday, January 26, 2024, the State DHHL agency utilized its power, political influence and staff resources to overturn a decision by the Hawaiian Homes Commission on January 16, 2024 denying the proposed purchase of the Waipouli 82-unit Apartment Complex, which will lead to the eviction of its tenants to rent the units to native Hawaiians on the Waitlist instead of issuing a Hawaiian Home Lands lot award. As a result, the State DHHL intends to expend \$2.4M from our resources for consulting and professional services, and \$25M from our NAHASDA, toward the \$44M purchase on Kauai.

The AHHL Waitlist HBA hereby provides its summary report of the State DHHL proposal, and the more than 250 opposition testimonies filed with the State DHHL and the Hawaiian Homes Commission on January 26, 2024. The 6.5 hour hearing itself was incredibly inspiring. Near universal opposition, with extraordinary common-sense rationale by citizens of our State.

Yet, the politics, influence and violations of Sunshine Laws, by the State DHHL ensured the outcome was predetermined well before the January 26, 2024 hearing ever started. It is an all-too-common reality of native Hawaiian citizens in the State of Hawaii, where the politics of the powerful seem to always outweigh good policy for the people defined in the HHCA.

Nevertheless, the AHHL Waitlist HBA is determined to continue to participate in our great democracy, filing this report with relevant State and Federal officials.

The AHHL Waitlist is **opposed** to using our State DHHL resources to acquire Waipouli, however, **supports** its purchase by more appropriate government agencies, such as the County of Kauai or the State DBEDT or State Public Housing Agency, to convert its private investor ownership to an affordable workforce housing project for all citizens on Kauai. It is unacceptable for native Hawaiians to have our resources once again, diverted away from the mission of the HHCA - the issuance of homestead lots to our Waitlist citizens. **Mahalo.**



Summary Report of the
Hana Hou AHHL Waitlist Petition

Respectfully Opposing for a Second Time
Hawaiian Home Land Resources of \$27.4M
to Purchase the Waipouli Apartment Complex

January 26, 2024
Hawaiian Homes Commission Special Meeting

This report summarizes over 250 pieces of opposition testimony received by the AHHL Waitlist Homestead Beneficiary Association, filed with the Hawaiian Homes Commission on January 26, 2024. This is the second time in 10 days Hawaii citizens defined in the Hawaii Constitution and the federal Hawaiian Homes Commission Act of 1920 (HHCA), have stood against the Governor Green Administration proposal to divert resources totaling \$27.4M away from the mission of its State agency, the Department of Hawaiian Home Lands (DHHL).

Instead of issuing homestead lots to the 29,000 on the Waitlist for a Hawaiian Home Lands award, the State DHHL is seeking to purchase the Waipouli 82-unit apartment complex located on Kauai, which will result in evictions of existing tenants to replace them with aging Waitlist Hawaiians. Opposition is deafening, against spending a single dollar on “rent to own” schemes – calling on the Green Administration to live up to his promise to be loyal to the HHCA, to issue homestead lot awards.

On January 16, 2024, the proposal was voted down through a 5-4 vote of the Hawaiian Homes Commission.

Jan 16 - 5 Opposed:	Randy Awo, Maui	Dennis Neves, Kauai
	Zachary Helm, Molokai	Sanoe Marfil, Oahu
	Michael Kaleikini, East Hawaii	

Jan 16 - 4 Supported:	Kali Watson, At Large Chair	Pauline Namuo, Oahu
	Makai Freitas, West Hawaii	Walter Kaneakua, Oahu

On January 26, 2024, the Governor Green Administration called for a second meeting of the Commission to attempt to turn any one of the 5 opposition votes, to support the State DHHL apartment complex proposal. After a 6.5-hour meeting, the Governor Green Administration achieved its intended reversal, with Commission votes as follows:

Jan 26 – 1 Absent Sanoe Marfil, Oahu

Jan 26 – 3 Opposed	Randy Awo, Maui	Dennis Neves, Kauai
	Zachary Helm, Molokai	

Jan 26 – 5 Supported	Kali Watson, At Large Chair	Pauline Namuo, Oahu
	Makai Freitas, West Hawaii	Walter Kaneakua, Oahu
	Michael Kaleikini, East Hawaii	

The State DHHL was successful in switching the vote of Commissioner **Michael Kaleikini**, East Hawaii from Opposed on January 16, 2024, to Supported on January 26, 2024, without explanation by Mr. Kaleikini.

Special mahalo to Commissioner **Randy Awo** of Maui, Commissioner **Dennis Neves** of Kauai, and Commissioner **Zachary Helm** of Molokai, for leading the opposition so eloquently, articulating the obvious misuse of Beneficiary resources on the high-end and expensive apartment purchase which the State DHHL’s own 2020 Survey clearly shows, native Hawaiians do not want. It is notable, all three of these Commissioners, as well as Commissioner **Sanoe Marfil** of Oahu that opposed the measure on January 16, 2024 are HHCA Beneficiaries themselves, understanding deeply the impact on native Hawaiians enrolled under the HHCA, and respecting Beneficiary and HBA constituent expertise.

While the people spoke broadly, in person and on zoom at the hearing, with near complete opposition, the politics of the State DHHL overturned the January 16, 2024 decision.

Basic Components of the State DHHL Request for \$27.4M

Following are the core components of the State DHHL request to the Hawaiian Homes Commission:

1. Requests the diversion of \$25M in federal grant funds in HHCA Beneficiary resources to purchase a \$44M rental apartment asset of 82 apartments on the island of Kauai, instead of dedicating these funds to the issuance of homestead lots and directly supporting the building of homes by native Hawaiians.
2. Requests the diversion of an additional \$2.4M to hire staff and consultants to package a Low-Income Housing Tax Credit (LIHTC) application toward the asset purchase due in February 2024.
3. Once acquired, to achieve the State DHHL plan, evict the current occupants of the complex to rent the apartments to Waitlist individuals for 15 years, at which time, an opportunity would be available to obtain a mortgage to purchase and own the apartment or condominium unit.

It is deeply troubling, yet not surprising, that the State DHHL failed in any reasonable effort to be transparent with members of its own governing body, the Hawaiian Homes Commission, as well as native Hawaiian citizens it is obligated to serve. The proposal was released the day before the January 16, 2024 Commission meeting, consisting of over 90 pages imbedded in a 449-page Commission packet.

AHHL Waitlist HBA Basis of Opposition

The AHHL Waitlist HBA, representing the interests of native Hawaiians on the Waitlist opposed the original January 16, 2024 proposal, and again, opposed the January 26, 2024 resubmission. Opposition is concentrated in three common-sense categories:

1. **Proposal is Off HHCA Mission.** The proposal does NOT result in a single issuance of a homestead lot to the State Waitlist of 29,000 native Hawaiians, the highest purpose and mission of the State DHHL. It directs HHCA Beneficiary resources to rental housing with the intent of renting units to Waitlist Beneficiaries, and after 15 years, providing an opportunity to complete a purchase of a condominium.

We remind, the mission of the HHCA is to develop and issue homestead lots for residential, farming and ranching purposes. The expectation has not changed, that this and every Governor must be loyal to the HHCA mission.

2. **Proposal is Poor Investment of Beneficiary Resources.** The proposal requests \$25M in NAHASDA funding, intended to support low-income native Hawaiians on Hawaiian Home Lands, and another \$2.4M to complete a LIHTC application. Testimonies abound on the spending of limited resources away from the core mission of the HHCA – the issuance of homestead lots and directing the NAHASDA funds to supporting low-income Waitlist individuals to build vertical homes they own, on their lot award.

We encourage more relevant public agencies, like the County of Kauai or the State of Hawaii public housing agency, or DBEDT to spend \$25M in its resources to acquire the project for affordable and workforce housing, avoid evictions and increase access to affordable rentals on the island for all

AHHL is a Homestead Beneficiary Association founded in 2008 dedicated to Ending the Hawaiian Home Lands Waitlist of 29,000 native Hawaiians enrolled for a Residential, Farming or Ranching Homestead

citizens, including native Hawaiians. It is unnecessary to deplete the coffers of native Hawaiians, which continue to wait for a lot award on Hawaiian Home Lands.

3. Proposal is an Expensive Property with Insufficient Financial Analysis. The proposal is the acquisition and renovation costs of Waipouli at just under \$60M or \$732,000 per unit on average, against an appraised value of \$44M. It’s an extremely expensive property, hence the State DHHL request to divert \$25M in Beneficiary NAHASDA grant funds toward its purchase. The State DHHL Appraisal indicates the highest and best use supporting the \$44M valuation is to convert the 82 units to condominiums, for sale, documenting price points of \$600k for a one bedroom, \$750k for a two-bedroom and \$880k for a 3 bedroom.

Presently, Waipouli is operated as a rental project, where the State DHHL Appraisal discloses operating costs at \$1.2M. Total rental revenues annually are \$2.4M due to the rent levels of \$2,050 to \$2,250 for the 20 one-bedroom units, \$2,350 to \$2,550 for the 42 two-bedroom units and \$2,250 to \$2,750 for the 20 three-bedroom units. Even if the State DHHL subsidized the purchase price with our grant funds, it has yet to disclose how it will lower rents to affordable rental rates that are sufficient to cover the operating costs, year over year.

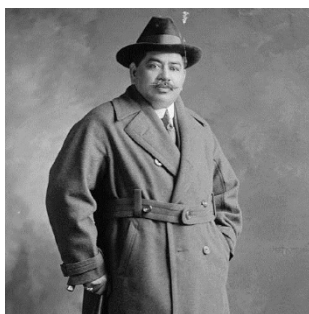
In summary, the State DHHL went from a proposal to acquire an expensive apartment complex for strictly kupuna housing rentals in partnership with new start up nonprofit affiliates and within 10 days, changed the proposal to instead purchase the property for a “rent to own” approach to the Waitlist.

The resources the State DHHL manages on our behalf as HHCA Beneficiaries deserves far greater analysis, and inclusion of Homestead Beneficiary Associations (HBAs) before anything of this financial magnitude spends resources we prioritize to support homestead lot disposition over apartments.

Excerpts from State DHHL Website

The AHHL Waitlist HBA has been confounded by the State DHHL efforts to push tens of millions of dollars of Beneficiary resources to “rent to own” and/or apartment living for those of us on the Waitlist. It is in direct conflict with the HHCA, but also the State DHHL’s own messaging:

Excerpt from State DHHL Website: *“The Hawaiian Homes Commission Act intended to return native Hawaiians to the land, while encouraging them to become self-sufficient homesteaders on leased parcels of land.”*



“After extensive investigation and survey.....it was found that the only method in which to rehabilitate the race was to place them (native Hawaiians) back upon the soil,”

Prince Jonah Kūhio, a Congressional Delegate of the Territory of Hawaii, wrote to U.S. Senators before the passage of the Act.

The Citizen Prince
March 26, 1871 – January 7, 1922

Sampling of the Hana Hou Aole Petition Testimonies

The AHHL Waitlist HBA published a sampling report of the 130+ Petition Testimonies received in less than 5 hours in opposition to the January 16, 2024 agenda item on this project.

This summary is provided on the 250+ Hana Hou Petition Testimonies received in opposition on the second attempt on January 26, 2024. The AHHL Waitlist Petition seeks solutions as follows:

1. *Do NOT spend \$25M of our NAHASDA funds to put us in a rental apartment. Spend our resources to issue homestead lots, not apartments.*
2. *Governor Green and DHHL Director Watson must focus every penny of every resource available at DHHL to the mission of the HHCA, do not be sidetracked. Issue homestead lots not apartments.*
3. *Do NOT buy an apartment complex on Kauai that will evict 82 Kauai citizens in the middle of a housing crisis, just to place us in them as renters. Issue homestead lots, not apartments.*

Hano Hou Petition Testifiers signed their names, gave email addresses, hail from every island and some from the continent. Following is a sampling of just 55 comments out of the 250+ Hana Hou Petition Testimonies:

1. *HEWA LOA! Where is Governor Green?! Senator Schatz? Why doing this to us?*
2. *The purpose of Department of Hawaiian Home Lands is to provide Hawaiians with LAND! It's in the name! The purpose is to have land to homestead, allow Hawaiians that connection with aina and be able to work to sustain ourselves!*
3. *Do not evict Kauai citizens to put beneficiaries in it as renters. Issue homestead lots not apartments.*
4. *Gov Green and Director Watson, please direct all funds and resources to the mission of The HHCA. Do not put our kupunas in rentals. Put them back on land.*
5. *Stop the oppressive tactics !*
6. *The Act promised Hawaiians land to live off of, and they have been let down for far too long. Apartments would be a shameful and unintended waste of these funds.*
7. *The display of political underhandedness, government is rotten.*
8. *It is ridiculous to keep up this facade of caring about Kānaka by exploiting them in this manner. Kānaka needs land and land needs kānaka. Stop creating generational trauma by imprisoning kānaka in rentals.*
9. *Fulfill the duty and obligation of DHHL and its only purpose, which is to put the Hawaiian people back on the 'āina. My mother died waiting on the list to get pastoral land. And now I am not able to succeed her and the 'āina owed to her because she died before she got hers and I'm 5% less than 50. Do what's right. We don't need apartments, we need the 'āina.*
10. *Aloha, I am Kuuipoonālani Melani Estoy, and I am the granddaughter of a waitlisted kupuna that has already passed on. Her name was Lorraine Ah-yo of Pahoā, Puna. My mother Ramona Estoy now 62yrs strong is also on the wait list. Both applied at the age of 18 years old. When I turned 18 my hope was to also apply but I was warned I might end up on the wait list like many others. Please have the kupuna in mind when making your decision. Me ke aloha nui.*

AHHL is a Homestead Beneficiary Association founded in 2008 dedicated to Ending the Hawaiian Home Lands Waitlist of 29,000 native Hawaiians enrolled for a Residential, Farming or Ranching Homestead

11. *Hawaiian homestead land was not established by Kuhio to simply house Hawaiians. Kuhio seen his people dying and landless. It was established to give Hawaiians a homestead where they can be self-sufficient, sustainable and to be able to pass that privilege and culture down for generations. Shame on you for continuing to displace Hawaiians from their land by putting us in apartments. Hewa loa! Foreigners should be the ones being put in apartments and the 'aina should be available for the kanaka to ola & malama! What a senseless proposal!*
12. *How dare they try to offer Kanaka apartments!!! I was so offended when I got that survey. All this land that they're leasing out to other entities give it to the HAWAIIAN!!! we have to take our land back!!! I've been waiting for The Last over 20 years!!! I'm so angry. We are too nice to them.*
13. *Give the Hawaiian people their land now.*
14. *No apartments homestead land or lots to build houses we want to be homeowners not apartments owners there's a big difference between both*
15. *Apartments won't grow us food*
16. *I've been on the waitlist for many years and am from Niihau waiting for land to be available for my keiki. I am 78 years old, and almost passed away last year from a heart attack. How much longer do I have to wait? Till I make?! Shame on you DHHL for having us kupuna wait so long on the list then only offer us an apartment while you hold out on vacant land. Stop selling all our land off to investors so we can get back onto it!*
17. *Both of my parents passed away waiting for their opportunity...it's been well over 40 years! Issue homestead lots not apartments!*
18. *Well said in the announcement of the "waitlist organizations" petition. I oppose the proposal and the US Federal and State governments management styles with an authoritarian attitude and nature that contradicts the U.S. of America's Public Law doctrines!*
19. *I have been waiting over 3 decades to be awarded an estate so I can farm, take care of my livestock and Malama and Aloha 'aina. I DO NOT support getting rentals to house waiting list homesteaders. Do what's right and fair for the Indigenous kanaka maoli of this 'aina!*
20. *Do in righteousness. Prince Kuhio 's legacy is to PUT OUR PEOPLE ON THE LAND. OUR QUEEN SAID TO STANDFAST.*
21. *I strongly object to the Dept. Of Hawaiian Homes using any of our NAHASDA monies to buy property that would not only kick out 80+ tenants, and offer tiny boxes to whomever, but Not put a single wait lister on the 'Aina!*
22. *No rental apartments for Leasee just household lots!*
23. *Give us what we are rightfully entitled too and help by spending it on improvements to those lands, not five, ten, or 20yrs down the road but soon. My sister waited 58 yrs and still waiting. Our people suffered many hard times with looking for a place to set themselves in, all the while they could have been living in a home and could have had the opportunity to live sustainably.*
24. *Do what the trust says to do. Don't deviate and allow Hawaiians to own a home.*

25. *I live in Ka'u on the south of Hawaii island. I have been on the waitlist for 36 years. I oppose renting after waiting for more than half of my lifetime. I want to leave succession to my keiki or moopuna*
26. *I am in opposition to buying an apartment complex with the idea of rent to own in the future. I prefer DHHL using monies for infrastructure and rewarding current wait listers with their own leased lots.*
27. *How dare the state wants to steal money from us poor Hawaiians again. So sad.*
28. *Use DHHL funds to create Home OWNERSHIP!*
29. *Use the money for what it was intended! Let the Hawaiians get on their own land to build their private homes.*
30. *Democrats continue to steal and have no care for the Hawaiian People as a race or a community*
31. *We witnessed the deceit and chaos around the deferred interest rent-with-option-to buy program that DHHL implemented in partnership with Ikaika Property Managers in Kona on the Big Island. The tenants and their homes are neglected and abandoned by the property management team with Ikaika and DHHL does nothing. The urgency to chip away at the waitlist list has led to decisions being made in haste. The impacts of those decisions are everlasting. A'ole to more hasty decisions that compromise our right to homestead living.*
32. *As President of Kamiloloa-One Ali'i Homesteaders Association, we vehemently oppose the use of DHHL funding to purchase apartment or condominium rental units for those on the wait list, but rather encourage the department to open up actual lots for our people to be able to choose the best place and lifestyle for themselves, and not be forced to 'take what get' and live like sardines in a complex. Rental appartments or condominiums are NOT acceptable!!*
33. *I totally oppose using the monies to buy rental property. Put the Hawaiians on their own land where they can build/own their own home.*
34. *I am opposed to this proposed project. The Hawaiian Homes Comission Act promised land awards for the Hawaiian people to be rehabilitated & prosper. It promises house lots, farm lots, pasture lands, aquaculture areas, and commercial business land for Hawaiian beneficiaries. Rent to own apartments do not align with what was promised to our people in the Hawaiian Homes Commission Act.*
35. *I am strongly opposed to this proposed use of our funds. Give us our land. I am a Kauai kupuna on the waitlist for 63 years. I do not want an apartment to rent. Award Hawaiians our land as promised in the HHCA, pastures, house lots, agricultural lands.*
36. *Use money to give funds to wait list or lessee to build on their vacant lots.*
37. *Make qualifying to get money for low/lower income or those with hardly any savings or with debts to be able to get NAHASDA funds.*
38. *This is not right! Aole'*
39. *No apartment rental awards. Only land*
40. *This is so terrible another way to oppress the Hawaiian people! Aole pono to purchasing the Kauai apartment bldg!!*

41. *Hewa ! I hope this reaches our Senators in Washington.*
42. *Make everyday's number 1 priority to get native Hawaiian families off the waitlist before they move off island and a Hawaiian coco no more...*
43. *No more Kroc center, solar power farms, special Olympics, and omg a rail system with the name "Skyline" because people cannot pronounce "Leihua"*
44. *Use the money for hawaiian home lands, not apartments/condos.*
45. *We need grants to renovate our homes. Renting? That makes no sense. We want homes for our people not apartments, we waited for so many many years and want a house not an apartment. Especially when we must rent with an option to buy.*
46. *My wife is on the residential waitlist. I am her successor. A'ole to wasting money on rentals. My wife would be 77 if we waited 15 years to buy under this proposal.*
47. *We want homes with yards to grow our own food!*
48. *Why is this being forced again on our people?*
49. *Didn't DHHL hear from us in their 2020 survey and last week denial by the Commission for this same thing. Aole. Please, listen to the people that are dying on the waitlist. Don't spend our funds chasing apartments no one wants. Just give a homestead lease, even if just an undivided interest lease.*
50. *Where is Governor Green?*
51. *Homestead lots are the goal. Apartments are a distraction.*
52. *Hawaiian Homestead is ridiculous, who the hell is monitoring this people this ridiculous next thing you come here someone asked him for 25 million for their own pocket. Maybe I should do the same Hawaiian Homestead needs revamp we need to scrub the whole system. And start again*
53. *Opposed to DHHL spending monies on rental or condos!!!
AOLE.....give the lots to the Hawaiian people!!!! Successor for Oahu*
54. *Those NAHASDA funds SHOULD ABE USED for the beneficiaries' needs as that's why it was allocated to the State DHHL. Surveys taken, some through Beneficiary Consultation, showed the use of RENTALS are the least requested use of our lands, so why would the Administration keep PUSHING RENTALS.*
55. *DHHL had already attempted this in maluohai, and it was and is a failure for those that after renting were then subjected to paying more than what the home had cost when initially built. Also, apartment/condo is not in my opinion what the waitlisters want.*

AHHL Waitlist HBA Closing Statement

We call on Governor Green and DHHL Director Watson to stop, to reverse course on your proposal to evict Kauai citizens to place 82 of us on the Waitlist into an apartment. Concentrate all resources and energies on the mission of the HHCA – to issue homestead land awards to 29,000 HHCA Beneficiaries. Rental housing with our resources is NOT a priority of the HHCA.

We do not want to repeat the pain and anguish of the last 10 decades, nor the 25-year journey of the Kalima Case Plaintiffs forced to sue the State of Hawaii and DHHL. Mahalo.

AHHL is a Homestead Beneficiary Association founded in 2008 dedicated to Ending the Hawaiian Home Lands Waitlist of 29,000 native Hawaiians enrolled for a Residential, Farming or Ranching Homestead



April 11, 2024

TESTIMONY OF THE ASSOCIATION OF HAWAIIAN CIVIC CLUBS
To the Senate Committee on Hawaiian Affairs

**Submitting for consideration and confirmation to the Hawaiian Homes Commission,
Gubernatorial Nominee, SANOE MARFIL, for a term to expire 06-30-2027 .**

Aloha Chair Shimabukuro, Vice Chair Fevella, and members of the Committee:

The Association of Hawaiian Civic Club **supports** GM 746, which confirms Sanoe Marfil to the Hawaiian Homes Commission. Ms. Marfil is the current President of the Nānāikapono Hawaiian Civic Club and she is well-qualified for this appointment. Ms. Marfil's long-standing track record of serving and advocating for Native Hawaiians as well as her experience with State and Federal grant programs and as a beneficiary of the Department of Hawaiian Home Lands will serve her well in her duties as a member of Hawaiian Homes Commission.

Founded by Prince Kūhiō in 1918, the Hawaiian Civic Club movement is the oldest Native Hawaiian community-based advocacy movement. The Association of Hawaiian Civic Clubs is a not-for-profit organization that is a confederation of 61 individual and autonomous Hawaiian Civic Clubs located across Hawai'i and across the continental United States. With more than 3,000 members, we advocate for improved welfare of Native Hawaiians in culture, health, economic development, and education.

We appreciate your favorable consideration of our support for Ms. Marfil.

Testimony of Matson Navigation Company, Inc.
Support of GM746
Before the Committee on Hawaiian Affairs
April 11, 2024

Dear Chair Shimabukuro, Vice Chair Fevella, and Members of the Committee,

Matson Navigation Company, Inc. supports GM746, which nominates Sanoë Marfil to the Hawaiian Homes Commission. Ms. Marfil has a long history of serving the community. We believe her experience as the chief program officer for the Institute for Native Pacific Education for past 14 years and as president of the Nanaikapono Hawaiian Civic Club for the past three years qualifies her to serve on the Commission. We believe Ms. Marfil will positively contribute to the betterment of native Hawaiians.

Thank you for considering our testimony in support.

HO`OMANA PONO, LLC
Mamua Kānaka

Attn: Senator Maile S.L. Shimabukuro, Chair, Hawaiian Affairs Committee
Senator Kurt Fevella, Vice Chair, Hawaiian Affairs Committee
Members of Hawaiian Affairs Committee

April 1, 2024

Re: **GM746 Advise & Consent for Sanoë Marfil Submitting for consideration and confirmation to the Hawaiian Homes Commission**

We **STRONGLY SUPPORT** this appointment of Sanoë Marfil to the Hawaiian Homes Commission. As a native Hawaiian advocacy Corporation operating out of the Westside, we support our people, 96792 & culturally relative appointments.

Here, we are grateful to the Governor for seeking the appointment of a Mana Wahine from Nānākuli Homestead. Sanoë is a force in her own right. Her quiet and contemplative demeanor since she has been on the HHC, demonstrates an aptitude to thoroughly vet issues BEFORE rendering her vote on each matter that comes before the commission.

Sanoë's resumé further demonstrates a commitment to the organization called: "INPEACE "programs and services that strengthen, support, educate and empower communities"¹.

Therefore, we believe that Sanoë will continue in her commitment to EMPOWER native Hawaiians to get off the Waitlist, and instead, get back on to the `Aina, to facilitate `Aina Ho`opulapula.

Please give Sanoë your "Advise and Consent". Mahalo Nunui.

De Mont Kalai Manaole

De MONT Kalai Manaole, Co-Manager
86-044 Hoaha St.
Wai`anae, HI 96792
Email: Hoomanaponollc96792@gmail.com

¹ **INPEACE** is a nonprofit organization that relies heavily on grants to fund programs and services that strengthen, support, educate and empower our communities.

Aloha e Chair Shimabukuro, Vice Chair Fevella and honorable members of the Hawaiian Affairs Committee...

I am Patrick Kahawaiolaa in native Hawaiian as defined, Pursuant to the HHCA 1920 as amended July 9, 1921 (42, 42, stat 108), 67th Congress and the current president of the Keaukaha Community Association.

I am here to solicit the support of the Hawaiian Affairs Committee for the Governor's GM message 746 recommending that Ms. Sanoë Marfil be confirmed as an Oahu Commissioner representing beneficiaries of the HHCA, 2920, as amended.

Has a native Hawaiian who now spends her time outside of her primary occupation as a Mother & spouse as a leader with the organization called INPEACE is a nonprofit organization that relies heavily on grants to fund programs and services that strengthen, support, educate and empower our communities. ...

Her work in her native Hawaiian community of Nanakuli also speaks volumes for her relationship to connect with the native Hawaiian beneficiaries that is the primary constituency of the Hawaiian Homes Commission

Thank you for any favorable consideration for moving her name forward to the full Senate for confirmation to the Hawaiian Homes Commission...

I can be reached at (808) 937-8217

https://www.capitol.hawaii.gov/sessions/session2024/bills/GM746_.PDF

GM-746

Submitted on: 4/1/2024 12:46:36 PM

Testimony for HWN on 4/11/2024 1:00:00 PM

Submitted By	Organization	Testifier Position	Testify
Kahea Faria	Individual	Support	Written Testimony Only

Comments:

Strong support

GM-746

Submitted on: 4/3/2024 8:29:12 PM

Testimony for HWN on 4/11/2024 1:00:00 PM

Submitted By	Organization	Testifier Position	Testify
Walt Kaneakua	Individual	Support	Written Testimony Only

Comments:

I support Sanoë Marfil's nomination to the Hawaiian Homes Commission. Sanoë is a community advocate whose work builds relationships, furthers education, training and life skills for Native Hawaiians. She and I serve on the commission together and she participates with a large heart for the programs that build capacity for homestead assignment. Her strategic relationships with Nanakuli and Waianae community is helpful for assisting homestead issues. She is a strong commissioner with much to give to the program. Please confirm her.

GM-746

Submitted on: 4/8/2024 2:20:40 PM

Testimony for HWN on 4/11/2024 1:00:00 PM

Submitted By	Organization	Testifier Position	Testify
Kaipo Nuuanu	Individual	Support	Written Testimony Only

Comments:

Aloha Chair Shimabukuro and Member of the Senate Committee on Hawaiian Affairs,

My name is D. Kaipo Nuuanu. I support the confirmation of Sanoë Marfil to the Hawaiian Homes Commission.

DHHL has approximately 4,783 acres on the Leeward coast, including Nanakuli, Maili, Lualualei, and Waianae. There are 590 existing residential homestead and 42 agriculture Homestead in these communities. It is vital that beneficiaries be represented by someone who lives and works on the Leeward coast.

Mahalo.

GM-746

Submitted on: 4/8/2024 3:40:21 PM

Testimony for HWN on 4/11/2024 1:00:00 PM

Submitted By	Organization	Testifier Position	Testify
Allen Cardines, Jr.	Individual	Support	Remotely Via Zoom

Comments:

Aloha Chair Shimabukuro, Vice Chair Favella, and Members of the Senate Committee on Hawaiian Affairs,

I strongly support Sanoë Marfil's confirmation as a DHHL Commissioner. She is an Ambassador of Aloha from Nanakuli, of moral character, ethical conviction, and proven competence. She has proven that as a wife, mom, alumna of Nanakuli High and Intermediate School, DHHL beneficiary, and community leader.

Thank you for allowing me to submit my testimony in strong support.

Mahalo,

Allen Cardines, Jr.

GM-746

Submitted on: 4/8/2024 5:51:52 PM

Testimony for HWN on 4/11/2024 1:00:00 PM

Submitted By	Organization	Testifier Position	Testify
Georgette Stevens	Individual	Support	Written Testimony Only

Comments:

Aloha kākou,

I support Gubernatorial Nominee Sanoë Marfil's consideration and confirmation to the Hawaiian Homes Commission. She has always been a supporter of Native Hawaiian initiatives. She serves as a vice president for InPeace and currently serves as the Nānāikapono Hawaiian Civic Club.

She is aware of all the issues and needs of our people. Her service with the Department of Hawaiian Homelands will be a benefit to all.

Mahalo piha,

Georgette Stevens

GM-746

Submitted on: 4/8/2024 8:19:18 PM

Testimony for HWN on 4/11/2024 1:00:00 PM

Submitted By	Organization	Testifier Position	Testify
Paul Aio	Individual	Support	Written Testimony Only

Comments:

Resident leasee here in the Nanakuli Ahapuaa and a retired law enforcement officer who is thoroughly involved in our community organizations and assisting in community activities (ie. education, public safety and athletic programs). Having initially met Sanoë in our Nanaikapono Hawaiian Civic Club I was impressed with her knowledge, thoroughness, pleasant candor and sincerity in conducting our civic club meeting. Her personality exudes thoughtfulness with clarity on issues surrounding our Nanakuli Ahapuaa and beneficiaries of homesteads. I am endorsing Sanoë Marfil and ask our legislators there in the Senate to confirm her status as a Commissioner for DHHL.

GM-746

Submitted on: 4/8/2024 9:08:21 PM

Testimony for HWN on 4/11/2024 1:00:00 PM

Submitted By	Organization	Testifier Position	Testify
Tamra Hayden	Individual	Support	Written Testimony Only

Comments:

I live on the West side of Oahu and love this community. I am writing in support of SANOE MARFIL who I Believe would be an excellent choice. We have so many homesteads on this side of the island and the largest Hawaiian population. We desperately need representation of someone who knows and understands this population. As a graduate of Nanikuli High School and as a recipient of the program, I cannot think of a choice that would be timely and appropriate. Please consider her for this position. Vote with your mind and heart and remember the people who she will represent and assist.

Mahalo Nui Loa

T. Hayden

GM-746

Submitted on: 4/9/2024 8:47:03 AM

Testimony for HWN on 4/11/2024 1:00:00 PM

Submitted By	Organization	Testifier Position	Testify
Ileana Ruelas	Individual	Support	Written Testimony Only

Comments:

Sanoë Marfil is a committed consistent community advocate. I strongly support her nomination.



HOUSE OF REPRESENTATIVES

Hale o nā Luna Makaʻāinana

STATE OF HAWAIʻI
STATE CAPITOL
415 SOUTH BERETANIA STREET
HONOLULU, HAWAIʻI 96813

April 9, 2024

To the Senate Committee on Hawaiian Affairs

Hearing on April 11, 2024, at 1:00 p.m. in Conference Room 224

RE: GM746, Gubernatorial Nominee SANOE MARFIL to the
Hawaiian Home Commission

Aloha e Chair Shimabukuro, Vice Chair Fevella, and members of the Senate Committee on
Hawaiian Affairs:

I stand in **STRONG SUPPORT** of the Governor's nominee to the Hawaiian Homes
Commission, SANOE MARFIL.

Mrs. Marfil is eminently qualified to fill the vacancy on the Hawaiian Homes
Commission. She is a beneficiary of the Department of Hawaiian Home Lands, currently resides
in Nānākuli with her family, President of the Nānāikapono Hawaiian Civil Club, and is an
advocate of ʻŌlelo Hawaiʻi. She has earned a Bachelor of Arts with a concentration in Hawaiian
Pacific Studies and is currently working on her Master of Arts in Hawaiian Studies at the
University of Hawaiʻi at Mānoa.

Mrs. Marfil currently is the Chief Program Officer for the Institute for Native Pacific
Education and Culture (INPEACE) in Waiʻanae, Hawaiʻi and, as such, is deeply involved with
the community. She has nearly 20 years of experience working with people, programs and
project management, and is bilingual (Hawaiian and English). She is experienced in handling
federal, state and foundation grants, with responsibility for all program and project deliverables.

Mrs. Marfil, through her experience, has demonstrated that she is more than capable of
serving on the Hawaiian Homes Commission, and brings a wealth of knowledge and
understanding in working with not only the people on the Commission, but with the people
which the Department of Hawaiian Home Lands seeks to serve.

I strongly urge you to vote in favor of SANOE MARFIL to fill the vacancy on the
Hawaiian Homes Commission.

Representative Darius K. Kila

House District 44—Honokai Hale, Nānākuli, Maʻili
Hawaii State Capitol, Room 322 / Honolulu, HI 96813
Phone: (808) 586-9480 / Fax: (808) 586-9485 / Email: RepKila@capitol.hawaii.gov

The Senate Committee on Hawaiian Affairs

RE: GM746, Gubernatorial Nominee SANOE MARFIL to the Hawaiian Homes Commission

April 9, 2024

Page Two

Thank you for your consideration and support of SANOE MARFIL in this matter.

Very truly yours,

A handwritten signature in black ink, appearing to read "Darius K. Kila". The signature is fluid and cursive, with a large initial "D" and "K".

Darius K. Kila

Representative, House District 44

GM-746

Submitted on: 4/9/2024 2:13:31 PM

Testimony for HWN on 4/11/2024 1:00:00 PM

Submitted By	Organization	Testifier Position	Testify
Michelle Brown	Individual	Support	Written Testimony Only

Comments:

I AM IN STRONG SUPPORT OF GOVERNOR'S MESSAGE 746

MAHALO

GM-746

Submitted on: 4/9/2024 4:10:06 PM

Testimony for HWN on 4/11/2024 1:00:00 PM

Submitted By	Organization	Testifier Position	Testify
Carm Akim	Individual	Support	Written Testimony Only

Comments:

As 'Ohana of Hawaiian Homelands Beneficiaries, we testify in strong support for Sanoë Marfil as DHHL Commissioner.

GM-746

Submitted on: 4/9/2024 4:27:13 PM

Testimony for HWN on 4/11/2024 1:00:00 PM

Submitted By	Organization	Testifier Position	Testify
Ed werner	Individual	Support	In Person

Comments:

Fully support Sanoë marfil

GM-746

Submitted on: 4/9/2024 4:28:08 PM

Testimony for HWN on 4/11/2024 1:00:00 PM

Submitted By	Organization	Testifier Position	Testify
Elijah Werner	Individual	Support	Written Testimony Only

Comments:

I fully support Mrs sanoe marfil

GM-746

Submitted on: 4/9/2024 4:25:49 PM

Testimony for HWN on 4/11/2024 1:00:00 PM

Submitted By	Organization	Testifier Position	Testify
P.w	Individual	Support	In Person

Comments:

I fully support Mrs sanoe marfil

GM-746

Submitted on: 4/9/2024 4:30:27 PM

Testimony for HWN on 4/11/2024 1:00:00 PM

Submitted By	Organization	Testifier Position	Testify
Johnny	Individual	Support	Written Testimony Only

Comments:

I fully support Mrs sanoe Marfil

GM-746

Submitted on: 4/9/2024 5:48:07 PM

Testimony for HWN on 4/11/2024 1:00:00 PM

Submitted By	Organization	Testifier Position	Testify
pua auwae	Individual	Support	Written Testimony Only

Comments:

Fully support sanie marfil

GM-746

Submitted on: 4/9/2024 8:10:09 PM

Testimony for HWN on 4/11/2024 1:00:00 PM

Submitted By	Organization	Testifier Position	Testify
Makai Freitas	Individual	Support	Written Testimony Only

Comments:

Aloha,

I am in strong support of Sanoë Marfils nomination to the Hawaiian Homes Commission. I have had wonderful opportunity to work along side Sanoë on the Hawaiian Homes Commission for the past few months. During that time, I must say that learned a lot from her. She is highly educated, and I am impressed with the passion that she has to serve her community. I feel that she will be an asset to our Commission, as well as to our Beneficiaries.

Mahalo,

Makai Freitas

GM-746

Submitted on: 4/9/2024 8:30:16 PM

Testimony for HWN on 4/11/2024 1:00:00 PM

Submitted By	Organization	Testifier Position	Testify
Marsha Hee	Individual	Support	Written Testimony Only

Comments:

Aloha,

I support the confirmation of nominee Sanoë Marfil for appointment to the Department of Hawaiian Homelands Commission. Ms. Marfil would bring representation by and for native Hawaiian beneficiaries on the West side of Oahu. Thank you for this consideration.

Respectfully submitted by,

Marsha Hee, life-long citizen of Hawaii

Current resident of Volcano, Hawaii Island

GM-746

Submitted on: 4/9/2024 9:33:51 PM

Testimony for HWN on 4/11/2024 1:00:00 PM

Submitted By	Organization	Testifier Position	Testify
Andrea Dias-Machado	Individual	Support	Written Testimony Only

Comments:

Aloha mai kākou,

I write to support the appointment of Sanoë Marfil to the Department of Hawaiian Homelands Commission. Sanoë is wholeheartedly committed to supporting the health and welfare of Kānaka which is evident in all facets of her life as a makua kaiapuni, an executive professional serving the Native Hawaiian community and as a beneficiary of ‘āina hoōpulapula ma Nānākuli with her ‘ohana.

I am confident without a doubt that she will continue to make a significant impact to uplift our Native Hawaiian people in this role and ensure that kānaka receive Hawaiian Homestead lots and are connected to the ‘āina as Prince Jonah Kūhīō Kalanianaʻōle had envisioned more than 100 years ago through the establishment of the Hawaiian Homes Act.

Mahalo for the opportunity to submit testimony on behalf of Ms. Marfil I look forward to a favorable outcome on her behalf.

Me ke aloha,

Andrea Dias-Machado

andrea.puanani@gmail.com

(808) 590-7349

GM-746

Submitted on: 4/10/2024 5:32:26 AM

Testimony for HWN on 4/11/2024 1:00:00 PM

Submitted By	Organization	Testifier Position	Testify
Robin Brandehoff	Individual	Support	Written Testimony Only

Comments:

Aloha,

My name is Dr. Robin Brandehoff, and I am an assistant professor at University of Colorado Denver. I have known Mrs. Sanoë Marfil since about 2018 when we started working together through our Grow Your Own initiatives via the national Grow Your Own Collective and INPEACE. I have continued to partner with Mrs. Marfil and INPEACE as well as schools within Nānākuli-Wai'anae Area Complex with my research and one does not go far on the coast without hearing Sanoë being referred to as someone to talk to for support, guidance, or mentorship!

I have had the honor to see Mrs. Marfil grow in her work through her outreach within the community and her leadership within the organization throughout the years, always standing up for the linguistic, cultural, and land rights of Kanaka on the Leeward coast and throughout Hawai'i. Mrs. Marfil's passion and dedication to her homeland and community is what sets her apart from others. She genuinely cares about the culture, tradition, and language of the 'āina and kanaka of Hawai'i and she lives and speaks her truth with every fiber of her being with humility and grace. As an educator, a mother, an advocate, and a human being, Mrs. Marfil IS Nānākuli and all that the community and its ancestral history represents. I cannot think of a better representative to protect and serve the community than she.

If you have any questions, please do not hesitate to reach out. My email is robin.brandehoff@ucdenver.edu

Mahalo nui loa,

Dr. Robin Brandehoff

GM-746

Submitted on: 4/10/2024 7:35:21 AM

Testimony for HWN on 4/11/2024 1:00:00 PM

Submitted By	Organization	Testifier Position	Testify
Michelle Pieper	Individual	Support	Written Testimony Only

Comments:

Aloha,

I write this letter in wholehearted support of Sanoë Marfil's appointment to the Department of Hawaiian Homelands Commission, as the Senate Committee on Hawaiian Affairs considers GM746. Having had the privilege of being Sanoë's teacher at Nanakuli High and Intermediate School, I have been a firsthand witness to her remarkable journey of growth, her unwavering dedication to our community, and her leadership qualities that shine brightly in every endeavor she undertakes.

Sanoë is not only a beneficiary of the Department but also a beacon of hope and progress for our community. Her involvement as an active alumna of Nānākuli High and Intermediate School, her leadership as the President of the Nānāikapono Hawaiian Civic Club, her passionate advocacy for ‘Ōlelo Hawai’i, and her committed employment at INPEACE Hawai’i, all speak volumes of her dedication to nurturing and uplifting our community.

Sanoë's deep roots in and profound understanding of our culture and needs make her an ideal candidate for this role. She embodies the spirit of aloha and has continuously demonstrated her commitment to serving our people with compassion, integrity, and innovation. Her leadership has not only been transformative on a local level but also serves as an inspiring model for the broader Hawaiian community.

The Department of Hawaiian Homelands is at a pivotal moment, tasked with the historic responsibility of utilizing the \$600 million appropriation effectively to address numerous challenges. Now, more than ever, it is critical that we have representation that is not only knowledgeable and passionate but also deeply connected to the community's heart. Sanoë Marfil is that representative. Her insights, experiences, and visionary leadership will be invaluable in navigating the complexities of this role and in making strides toward a brighter future for Nānākuli and the Westside homesteads.

I share my mana‘o with the hope that it will illuminate the path towards recognizing the profound impact Sanoë Marfil will undoubtedly make on the Department of Hawaiian Homelands Commission. Her appointment is not just a step in the right direction for our community; it is a leap towards realizing the potential of our lands and our people. She will be an asset to the Department of Hawaiian Homelands.

Mahalo for considering my testimony.

With utmost respect and support,

Michelle Pieper

Nānākuli High School Teacher

Wai‘anae Moku Resident



94-1181 Ka Uka Blvd. Box E Waipahu HI, 96797 Tel: (808) 671-0066 F: (808) 671-5552 Email: vanellkn@aol.com

April 9, 2024

Aloha,

It is a pleasure to be able to give testimony on behalf of the character of Sanoe Marfil. Our time together has been well spent as our daughters were 2020 graduates of Kamehameha Schools. Sanoe is an outstanding Hawaiian woman who loves her culture and native language. She is always willing to set aside her personal time for the needs of others, learn innovative ways to readily implement in on-going projects, programs and fulfill commitments. I have witnessed how she is personally involved in conversations that are addressed to her and can recall favorable moments to encourage others in her circle of influence.

I highly recommend Sanoe Marfil, as I too am a Native Hawaiian Woman from Nanakuli, O'ahu.

Sincerely,

Vanell Kawai Naum

c/o 1991 Nanakuli Hawk Alumni

VKN Services, Inc

Owner/President

GM-746

Submitted on: 4/10/2024 11:18:17 AM

Testimony for HWN on 4/11/2024 1:00:00 PM

Submitted By	Organization	Testifier Position	Testify
Chadwick Roldan	Individual	Support	Written Testimony Only

Comments:

I strongly support Sanoe

COUNTY COUNCIL

Mel Rapozo, Chair
KipuKai Kualii, Vice Chair
Addison Bulosan
Bernard P. Carvalho, Jr.
Felicia Cowden
Bill DeCosta
Ross Kagawa



OFFICE OF THE COUNTY CLERK

Jade K. Fountain-Tanigawa, County Clerk
Lyndon M. Yoshioka, Deputy County Clerk

Telephone: (808) 241-4188
Facsimile: (808) 241-6349
Email: cokcouncil@kauai.gov

Council Services Division
4396 Rice Street, Suite 209
Lihu'e, Kaua'i, Hawai'i 96766

April 10, 2024

**TESTIMONY OF KIPUKAI KUALII
COUNCIL VICE CHAIR, KAUAI COUNTY COUNCIL
ON**

**GM 746, Gubernatorial Nomination of Sanoë Marfil to the
Hawaiian Homes Commission
Senate Committee on Hawaiian Affairs
Thursday, April 11, 2024
1:00 p.m.
Conference Room 224
Via Videoconference**

Dear Chair Shimabukuro and Members of the Committee:

Thank you for this opportunity to provide testimony in strong SUPPORT of GM 746, Gubernatorial Nomination of Sanoë Marfil to the Hawaiian Homes Commission. My testimony is submitted in my individual capacity as Council Vice Chair of the Kaua'i County Council.

Ms. Marfil has demonstrated exceptional dedication and effectiveness in her current term, and her continued service would greatly benefit our community. She brings nearly 20 years of experience in nonprofit leadership, program management, and project coordination. As Chief Program Officer at the Institute for Native Pacific Education and Culture (INPEACE), Ms. Marfil has shown outstanding leadership in overseeing various programs, including Early Learning, Educational Equity, and Economic Development. Ms. Marfil's strategic direction and ability to foster strong relationships with foundations, businesses, and community leaders have been instrumental in the success of these programs.

In her previous roles within INPEACE, including Program Director and Program Manager, she consistently delivered on grant requirements and ensured the smooth implementation of projects. Her expertise in Hawaiian culture and place-based pedagogy has enriched educational initiatives, contributing to positive outcomes for participants and the community at large. Additionally, Ms. Marfil's commitment to serving the Hawaiian community extends beyond her professional roles. As President of the Nanaikapono Hawaiian Civic Club and through her involvement in various professional affiliations, she actively engages in initiatives that promote cultural preservation, education, and community development.

Chair Shimabukuro and Members of the Committee
Re: GM 746, Gubernatorial Nomination of Sanoë Marfil to the Hawaiian Homes
Commission

April 10, 2024

Page 2

I wholeheartedly support Ms. Marfil's reappointment to the Hawaiian Homes Commission as her leadership, experience, and dedication make her exceptionally qualified to continue serving in this important role. Furthermore, she has the support of many within our beneficiary community and has proven herself to be an invaluable asset to the Hawaiian Homes Commission.

Thank you again for this opportunity to provide testimony in strong support of Sanoë Marfil's nomination to the Hawaiian Homes Commission. Should you have any questions, please feel free to contact me or Council Services Staff at (808) 241-4188 or via email to cokcouncil@kauai.gov.

Sincerely,

A handwritten signature in black ink, appearing to read "Kipukai Kualiti". The signature is fluid and cursive, with the first name "Kipukai" and the last name "Kualiti" clearly distinguishable.

KIPUKAI KUALITI

Council Vice Chair, Kaua'i County Council

AAO:slr

GM-746

Submitted on: 4/10/2024 12:07:50 PM

Testimony for HWN on 4/11/2024 1:00:00 PM

Submitted By	Organization	Testifier Position	Testify
Michael Kaleikini	Individual	Support	Written Testimony Only

Comments:

Aloha Chair Shimabukuro and members of the Senate Hawaiian Affairs Committee.

Mahalo for this opportunity to provide written testimony in SUPPORT of Gubernatorial Nominee Sanoë Marfil, to the Hawaiian Homes Commission.

The summary of experience stated on Ms. Marfil's resume will be a welcomed addition to the Hawaiian Homes Commission.

Mahalo for this opportunity, please support Ms. Marfil's appointment to the Hawaiian Homes Commission.

April 10th, 2024

The Thirty-Second Legislature, State of Hawai'i
Hawai'i State House of Representatives
Committee on Hawaiian Affairs (HWN)

RE: GM746 – SANOE MARFIL – Hawaiian Homes Commission Nominee

Hearing: April 11, 2024, 1:00PM, CR 224, Hawai'i State Capitol

Aloha, Chair Shimabukuro, Vice Chair Fevella and Committee Members –

I am writing in **support** of Sanoë Marfil's nomination to the Hawaiian Homes Commission.

Although I do not know her personally, several friends and associates of mine whom I hold in high regard have expressed their support for Ms. Marfil. She also has an impressive resume of Kanaka community service and leadership.

Please add my name to her list of supporters.

'IMUA,


Irish Barber

GM-746

Submitted on: 4/10/2024 1:01:48 PM

Testimony for HWN on 4/11/2024 1:00:00 PM

Submitted By	Organization	Testifier Position	Testify
Kapua Keliikoa-Kamai	Individual	Support	In Person

Comments:

Aloha kakou,

Mahalo for confirming and consenting to forward GM746 Submitting for consideration and confirmation to the Hawaiian Homes Commission, Gubernatorial Nominee, SANOE MARFIL, for a term to expire 06-30-2027 to the Senate Floor.

Sanoe Marfil has the qualifications that all Hawaiian Homes Commissioner's should have! She's the right person because her resume speaks volumes on her professional accomplishments! But you should also know that:

1. She's a beneficiary on the Wait List, 8/21/00. That's almost half of her lifetime for an AG lot.
2. She moved to Nanakuli Homestead (NH) since her youth with her parents. And continues to reside in NH with her husband, their daughters and uncle.
3. She knows firsthand what it is to be a homesteader as an opio and a makua.
 - o To see and face the challenges and obstacles of homestead life.
 - o To know of and receive the benefits of being a homesteader and beneficiary.
4. She faced the financial and familial challenges to go to college and recognized that education had to take a backseat to meet familial financial needs and went back to work full-time.
5. After a few years, she MADE it a priority to RE-START her educational path to improve her professional career and financial needs.
6. She continued her 100% commitment to her ohana and career and community while making the necessary accomodations.
7. She a community volunteer and supporter.
8. She's a mana makuahine, she's one of us!

Mahalo nui!

Kapua Keliikoa-Kamai

Hawaiian Home Lands Beneficiary

Wai'anae Valley Homestead Lessee

Concerned Wai'anae Moku Resident

GM-746

Submitted on: 4/10/2024 2:23:34 PM

Testimony for HWN on 4/11/2024 1:00:00 PM

Submitted By	Organization	Testifier Position	Testify
Germaine Meyers	Individual	Support	In Person

Comments:

I am in strong support of Sanoë Marfil's confirmation to the Hawaiian Homes Commission. I humbly ask for your vote in support of her confirmation.



April 8, 2024

SENATE COMMITTEE ON HAWAIIAN AFFAIRS

Hearing Date: April 11, 2024

Time 1:00 pm

Location: Conference Room, Hawaii State Capitol

RE: GM 746 Submitting for consideration and confirmation to the Hawaiian Homes Commission, Gubernatorial Nominee, SANOE MARFIL, for a term to expire 06-30-2027

To the Honorable Chair, Vice Chair and Members of the Senate Hawaiian Affairs Committee:

I would like to submit strong support to the nomination and confirmation of Sanoe Marfil as a Commissioner to the Hawaiian Homes Commission.

Ms. Marfil is a longstanding member and CEO of INPEACE with distinction, devoting much of her energies to understanding and providing commentary of programs work to achieve impactful of many communities of Olelo and 'Ohana! Further in fostering unity in schools and community on the Leeward Coast in strengthening conditions and opportunity for the future of our youth.

She is a beneficiary of Nanakuli Hawaiian Homestead and also a alumni of Nanakuli High and Intermediate School, our former President of Nanaikapono Hawaiian Civic and a strong advocate for native Hawaiians.

With every confidence I believe she will be able to build bridges and arrive at mutually agreeable solutions, an attribute which is key for anyone desiring to serve on a board like the Hawaiian Homes Commission. Peak and represent the beneficiaries she serves!

With respect, I urge you Senators, to support Ms. Sanoe Marfil to fill my seat which I had the opportunity to serve for four years to our beneficiaries in the State of Hawai'i.

Mahalo nu'u – God Bless you all!

KAHANAMOKU-TERUYA, Patty

GM-746

Submitted on: 4/10/2024 5:29:17 PM

Testimony for HWN on 4/11/2024 1:00:00 PM

Submitted By	Organization	Testifier Position	Testify
Eva Elizabeth Eli	Individual	Support	Written Testimony Only

Comments:

Aloha kākou e nā ‘elele alaka‘i o Hawai‘i pae ‘āina,

My name is Kapela Eli and I am a 3rd generation Hawaiian Homestead resident of Nānākuli & Wai‘anae. I was privileged to be raised in and by a loving Native Hawaiian ‘ohana and community and have a deep aloha and gratitude to the homestead communities that have raised me. These communities functioned and thrived as a result of deep pilina (connections), family obligation and communal accountability. As a result of living amongst Native Hawaiian families, we understood the value of aloha and mālama kekahi i kekahi.

I believe that the candidate for consideration, Sanoë Marfil, exemplifies all of the beautiful values that made my homestead upbringing special. She is a multi generation homesteader and deeply rooted and committed to the communities where she lives and serves. Beyond her aloha and pilina to Nānākuli and Wai‘anae, Sanoë also brings her knowledge and experience as an educator, program manager and Chief Program Officer with the statewide non-profit organization INPEACE. Sanoë continues to uplift her community and our lāhui in her daily work, in her community service initiatives and in her personal life as a working daughter, wife, mother, sister and friend.

There is no doubt in my mind that Sanoë is capable and full of the aloha and commitment that is required to lead our DHHL legacy forward into a bright future yet firmly grounded in her kuleana to our ali‘i, our kūpuna, our keiki and our lāhui. I highly recommend Sanoë Marfil to be appointed in the position of DHHL Commissioner.

Me ke aloha kaiāulu mau,

Kapela Eli

aloha ‘āina, aloha ‘ohana, aloha lāhui

GM-746

Submitted on: 4/10/2024 5:37:35 PM

Testimony for HWN on 4/11/2024 1:00:00 PM

Submitted By	Organization	Testifier Position	Testify
Stacelynn Eli	Individual	Support	Written Testimony Only

Comments:

Aloha e Honorable Chair Shimabukuro, Honorable Vice Chair Fevella, and Honorable Members of the Senate Committee on Hawaiian Affairs,

My name is Stacelynn Eli of Nānākuli and I am a former Hawai‘i State Representative and Department of Hawaiian Home Lands waitlister. Mahalo for the opportunity to provide strong support of Sanoë Marfil as commissioner for the Department of Hawaiian Home Lands.

I’ve known Sanoë Marfil since were both ‘ōpio at Nānākuli High & Intermediate School. She has always served humbly in our community. She’s well known for her firm but gracious commitment to excellence and service.

She’s a wahine that I deeply respect and I have always looked to her as a leader and person that I would seek out for mana‘o while serving as a state legislator. She’s exmplified pono leadership and I know that there are many from our community that are proud and encouraged to have her serve as commissioner for the beneficiaries of the Hawaiian Homes Act.

I strongly urge you to support her confrimation.

Me ka mahalo,

Stacelynn Eli

GM-746

Submitted on: 4/10/2024 9:18:07 PM

Testimony for HWN on 4/11/2024 1:00:00 PM

Submitted By	Organization	Testifier Position	Testify
Dember Momoa	Individual	Support	Written Testimony Only

Comments:

Aloha Chairman Shimabukuro, Vice Chair Favella and Members of the Senate Committee of Hawaiian Affairs.

It's a privilege to share my testimony in Strongly Supporting Sanoë Marfil's Nomination and Confirmation as a DHHL Commissioner.

Sanoë is an Outstanding Individual and a Leader whom I've had the Privilege of knowing for over 25 years. Sanoë has ALWAYS remained Humble, Loyal and Honest. She see's value and adds value to her Family, Community Members and Organizations around the world.

I Admire her Dedication and Ambition in helping our Community, Laying a Solid Foundation for our Keiki and Helping our Native Hawaiians Thrive.

It's an Honor to submit my testimony urging the Confirmation of Sanoë Marfil as a DHHL Commissioner.

Mahalo

GM-746

Submitted on: 4/11/2024 5:41:39 AM

Testimony for HWN on 4/11/2024 1:00:00 PM

Submitted By	Organization	Testifier Position	Testify
LIANA M CORTEZ- KEKAWA	Individual	Support	Written Testimony Only

Comments:

Aloha everyone,

My name is Liana M. Cortez-Kekawa and I am writing this testimony in strong support of Sanoë Marfil filling the position of DHHL commissioner for our Waianae, Nanakuli and entire WestSide.

As a long time community member I have had the pleasure to work along side Sanoë when she worked at Nānākuli Elementary. She has always shown to be a hard worker and a person of integrity and love.

I have watch Sanoë grow into the person she is today with both her family and her career.

As I try to be in the community and as involved as much as I can to build relationships with others I have been noticing many key people that I respect endorsing Sanoë also so after many nudges and prayers over this matter I am able to come here now to write my recommendation of this beautiful soul.

I pray that whomever gets this opportunity to sit in this seat is productive, effective and able to really use their time there to help our community, our families and our people.

I appreciate the time that I was allowed to speak here and now and I speak peace, life and blessings upon each and everyone of you.

Mahalo,

Liana M. Cortez-Kekawa

Nanakuli Hawaiian Homestead Resident and community member.

GM-746

Submitted on: 4/11/2024 9:48:38 AM

Testimony for HWN on 4/11/2024 1:00:00 PM

Submitted By	Organization	Testifier Position	Testify
Shirreen Keliinoi	Individual	Support	Written Testimony Only

Comments:

Sanoë has been a great contributor to our native Hawaiian community on the Leeward Coast!
She has my full support! Mahalo Nui!

GM-746

Submitted on: 4/11/2024 10:34:24 AM

Testimony for HWN on 4/11/2024 1:00:00 PM

Submitted By	Organization	Testifier Position	Testify
Krissel Westbrook	Individual	Support	Written Testimony Only

Comments:

Sanoë Marfil is well known in the leeward community! Always showing her Aloha for her community & peers she runs into. Sanoë is well educated in her Hawaiian Culture & will be a excellent DHHL Commissioner. Our Ohana has her support!