

SENATOR DONNA MERCADO KIM

PROUDLY SERVING DISTRICT 14

·Alewa·Ft. Shafter·Kalihi·Kalihi Valley·Kapalama·Moanalua Gardens & Valley-Red Hill·

Kalihi Valley August 2022 Report



Exercise your right to VOTE

If you haven't mailed in your ballot yet & prefer an alternative in-person voting is available!

- City Hall (530 South King St) is open for in-person voting from now until Election Day (bring your ID)
 - August 1st - August 12th: 8:00a.m.- 4:30p.m.
 - August 13, 2022: 7:00 a.m. to 7:00 p.m.
- Drop box in front of city hall 24/7

Ballots must be received by elections by August 13th so keep that in mind when you mail your ballot. Visit elections.hawaii.gov for more information.

Don't know who your candidates are? Go to <https://www.civilbeat.org/election-ballot-2022/> to see Civil

Beat's resource guide.



Mauna Kea Stewardship and Oversight Authority

- Act 255 (HB2024) establishes the Mauna Kea Stewardship and Oversight Authority as the sole administration for the management of Mauna Kea lands.
- Application deadline for the Mauna Kea Authority has now passed.
- There are 11 positions to be filled.
- Further details to come.
- Follow my Facebook for updates!



Connect with me!



Phone: 808-587-7200



Email: senkim@hawaii.capitol.hawaii.gov



Instagram: [@donnamercadokim14](https://www.instagram.com/donnamercadokim14)



Facebook: [@senatordonnamercadokim](https://www.facebook.com/senatordonnamercadokim)

Property Tax Bills for Homeowners

- Payments due on August 20th.
- Did you know that there is a City drive by drop box for property tax payers?
- Can pay via www.rphnlpay.com (fees applied), telephone (877)309-9117, in person at the Honolulu Hale room 115 or via drop-box outside of Honolulu Hale (530 S King St).





Kalihi

HI Connect Broadband Pilot

Access free wifi through these steps:

1 | Go to settings on your
computer or mobile device

2 | Choose Network & internet or
WIFI

3 | Select the WIFI network
named **HIConnect**

HI Connect WiFi is available at:

Hale Po'ai

Halia Hale

Hauiki Homes

Puahala I, II, III & IV

**HI Connect is a FREE broadband service provided by the State of
Hawaii. Call 808-587-2163 if you have any issues or questions.**

COMMUNITY NEWS & UPDATES

Air Conditioning Units to be Installed in DOE Classrooms

Act 260 (SB2862) appropriates funds to the Department of Education to install a/c units for public school classrooms that do not have them already. Here are the following Kalihi Valley schools waiting in the queue:

- Fern Elementary
- Dole Middle
- Linapuni Elementary
- Kalihi Waena Elementary
- Kalihi Uka Elementary
- Kalihi Elementary
- Kaewai Elementary
- Kapalama Elementary

For any questions regarding this Act contact the Department of Education for more information at 808-586-3230 or via email at doeinfo@k12.hi.us



Interstate Route H-1 Eastbound (EB) Improvements

Ola Lane overpass to Likelike Off-Ramp, Oahu

- To finance additional design for Interstate Route H-1 EB improvements from Ola Lane Overpass to Likelike Off-Ramp on Oahu.
- Amount Released: \$500,000.00
- Total project Cost: \$5,900,105.00
- Est. Completion: September 2022



Act 142 lowers cost of school supplies for Title I school participants

- Act 142, provides families of schools composed entirely of students eligible for Title I funding with free school supplies to help ensure educational success.
- Participating schools in our community are **Kaewai Elementary and Linapuni Elementary.**
- Contact these schools for more information



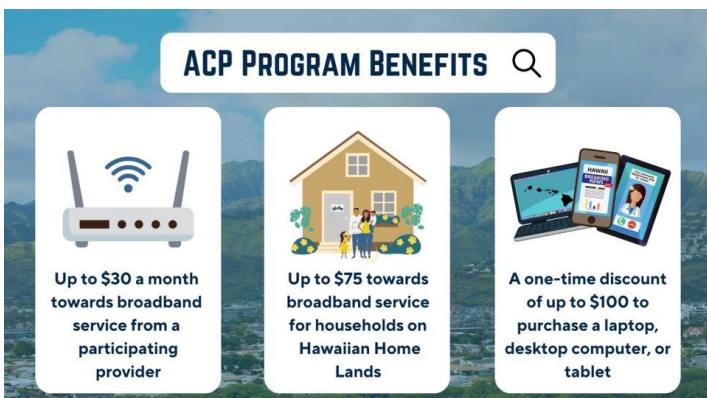
Back to School Reminders

- Keep our keiki safe from COVID!
- Although masks are optional for DOE students, make sure they're protected with a vaccine.
- Ensure that your children avoid close physical contact and wash their hands often.



Affordable Connectivity Program

- ACP provides qualified households up to \$30 a month off internet service bills with a \$75 discount for households on Hawaiian Home Lands.
- The program is funded through the \$65 billion Infrastructure Investments and Jobs Act that was passed by Congress in November 2021.
- The ACP is helping to build digital equity so Hawai'i residents can work remotely, take classes online, receive telehealth consults, access government services, and are able to participate in more activities.
- To see the full list of ACP eligibility details and participating Hawaii internet service providers, visit <http://broadband.hawaii.gov/acp/>.
- Apply now at <https://acpbenefit.org/>



What you need to know about Monkeypox:

- **What is monkeypox?**
 - a viral infection stemming from the same family as the smallpox virus
- **What are the symptoms?**
 - rash, fever, body aches, swollen lymph nodes, respiratory systems
- **How does it spread?**
 - direct contact from an infected person with a rash, scabs, or respiratory secretions
 - touching unwashed objects, fabrics, and surfaces
- **How do I protect myself?**
 - Get vaccinated once the vaccine is available to you
 - If you are considered high-risk you may be eligible for a monkeypox vaccine
- Call Malama I Ke Ola Center for more information
 - 808-871-7772
 - Mon-Thurs 8am-7pm
 - Friday: 9am-5pm
 - Saturday 9am-12pm

