



Representative Tina Wildberger
 Hawai'i State Capitol Building
 415 S Beretania Street, Room 327
 Honolulu, HI 96813

How to Contact Me

- ◇ repwildberger@capitol.hawaii.gov
- ◇ (808)586-8525
- ◇ www.dist11smaui.com

 @repwildberger

 Facebook.com/repwildberger

 @repwildberger

South Maui Food Distribution Sites

Monday - Friday 9:00am-2:00pm:

Calvary Chapel S. Maui 320 Ohukai Rd. Ste. 420 (808) 463-2099

Monday - Friday 5:00pm-6:00pm, Sat & Sun @ 4:30pm:

Hale Kau Kau - St. Theresa's Church 25 W. Lipoa St. (808) 875-8754

Every Friday 9:00am-10:00am:

Keolahou Church 177 S. Kihei Rd. (808) 879-4693

Every Saturday 10:30am to 12:00pm:

Hope Chapel Parking Lot 300 E. Welakahao St. (808) 879-3853

Aloha South Maui,

As I gear up for the 2021 legislative session, I'm working to ensure that I introduce bills that reflect the needs of South Maui, including several that were requested by constituents like you.

All of the community events I've participated in are keeping me energized and hopeful that we can pass some strong legislation in the next few months. I am especially looking forward to working with State and County officials to keep Maui residents safe as we continue navigating the COVID-19 pandemic.

Regarding COVID-19 updates, my office is working closely with County officials to learn more about vaccine options. Currently, vaccines are being distributed at Maui Memorial, and Maui College is doing drive-thru vaccines. However, vaccine information, including distribution, is a rapidly evolving issue so please follow me on social media @repwildberger for the latest updates.



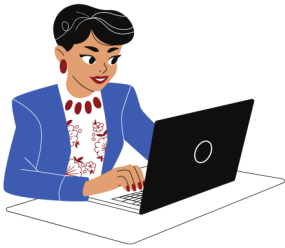
Rep Wildberger & Office Team

From Left: Rep. Tina Wildberger, Dr. Hannah Liebreich (Committee Clerk), Natalia Hussey-Burdick (Office Manager)

Please take good care,

*Mahalo,
Tina*

Remote Testimony!



The legislature is closed to the public this year due to COVID-19 precautions, but that means we're finally adopting remote testimony procedures! Now, you can testify on State bills via Zoom without ever leaving the comfort of your own home.

You must create an account on capitol.hawaii.gov in order to testify.

Visit dist11smaui.com/testify for full details, and feel free to contact my office or the Public Access Room if you have any questions about the legislative Process.

Public Access Room:

Website: <http://lrbhawaii.org/par>

Telephone:

(toll free from Maui) (808)984-2400

Session Hours:

Mon-Fri 7:45am - 6:00pm

Email: par@capitol.hawaii.gov



Community Plan Update

At long last...

We are updating the South Maui Community Plan!



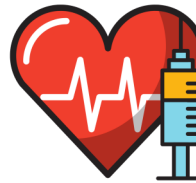
For more information & to contribute to the plan, visit:

southmaui.wearemaui.org

Vaccine Update

Vaccines are being distributed equitably by county, but there are Statewide shortages..

The DoH, healthcare providers & pharmacies are working together to distribute vaccine in four ways:



1. Large long-term care homes are being done by Walgreens and CVS.
2. Then they will pivot to smaller care facilities.
3. Federally Qualified Health Centers (FQHCs) are administering vaccine in rural communities like Hana.
4. PODs or Points of Distribution are administering by group category 1a & 1b via Maui Memorial and Maui College.

More details at dist11smaui.com/vaccines

Rep. Wildberger's 2021 Bill Package

Money Matters

- **Essential Wages for Essential Workers:** Increases Minimum Wage to \$15, Indexes it to the AMI, Robust Tip Credit for High-Tipped Employees.
- **Cannabis:** Legalizes & Taxes Responsible, Adult-Use Cannabis, including expungement & social equity elements.
- **Tuition Waivers:** Provides Tuition Waivers to Children of 100% Disabled or Deceased Veterans.
- **MCO Disclosure:** Requires medical loss ratio disclosure from Managed Care Organizations
- **Tax Audits:** Requires audits of companies who routinely undervalue their assets to avoid taxes

Environmental Justice

- **ESG Investing:** Requires State Trust Funds to Develop Sustainable Investment Plans.
- **Procurement:** Prioritizes Electric Vehicles When Renting Vehicles for State Business.
- **Waste Management:** Facilitates Small-Scale Recycling & Composting
- **E-Foils:** Adds e-foils to The List of Water Crafts Banned During Whale Season.
- **DEP:** Creates a State Department of Environmental Protection, reorganizing some duties from DOH, DOA, DLNR, etc.

Remedies & Reform

- **Election Reform:** Increases Voting Accessibility & Improves various Campaign Ethics Rules.
- **Restorative Justice:** Requires all Counties' Judiciary Branch to implement a Restorative Justice Program.
- **Law Enforcement:** Mandates Reporting of Lawbreaking Witnessed by Fellow Officers, Requires Psych Evaluations, & Prohibits Chokeholds.
- **Lexi's Law:** Requires all Moped & Scooter Rentals to Provide a Helmet.
- **Child Welfare:** Clarifies & Improves Rights of Children During Custody & Visitation Cases.
- **Parental Alienation Syndrome:** Disallows PAS in Cases With Reported Childhood Sexual Abuse

Pandemic & Preparedness

- **Data Modernization:** Strengthening Public Data Reporting Requirements, and Funding a Chief Data Officer to Facilitate Statewide System Upgrades.
- **Restaurant Recovery:** Providing Additional Revenue to Restaurants for COVID Response, Requires All Counties' Liquor Commissions to allow Take-Out Liquor Sales
- **Disaster Prep:** Requiring all new buildings to withstand Cat 4 storms, and all new State buildings to withstand Cat 5
- **Homestead Exemption:** To mitigate the wave of post-pandemic foreclosures, allows Homeowners Who Declare Bankruptcy to Keep Their Primary Residence (Up to \$2M)

Let us know if you'd like to receive newsletters by email instead! (808) 586-8525 repwildberger@capitol.hawaii.gov