



Joy A. San Buenaventura

State Representative
District 4, Puna

2017 Legislative E-Newsletter January 2017



With Governor David Ige

Opening Day 2017



Olelo Youth Capitol Commentary.



ILWU, Local 142, Hawaii Island.



SAG, IATSE & teamsters-local artists & workers who benefit from local film production.



With Councilwoman Eileen O'Hara and Barbara Lively.



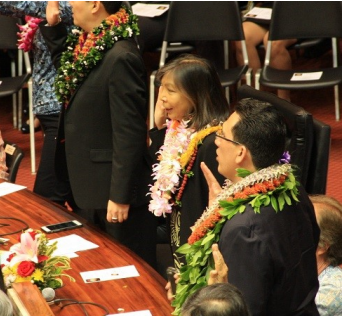
With members of the United Public Workers Union, Local 646



Sheldon Lehman, Rep. San Buenaventura, Bobby Jean Leithead Todd, and Senator Russell Ruderman.



With Hawaii Community College chancellor Rachel Solemsaas.



Breathe Aloha

For More Opening day photos: <https://www.flickr.com/photos/hihousedems/albums/with/72157679347128515>

This is a tremendous loss for the Pahoia community; we have lost an icon. The Akebono Theatre was one of the oldest theaters operating in Hawaii and it was a site of multiple community events, and Luquin's Mexican Restaurant was a popular eatery. My condolences to Sal Luquin. Thankfully, no one was physically injured.



A 'shocking' loss; Fire ravages Pahoia's Akebono Theatre, Luquin's restaurant

By John Burnett and Tom Callis | Hawaii Tribune-Herald

Published January 17, 2017 - 12:05am

<http://hawaiitribune-herald.com/news/local-news/shocking-loss-fire-ravages-pahoia-s-akebono-theatre-luquin-s-restaurant>

A night-time blaze gutted the historic Akebono Theatre and Luquin's Mexican Restaurant in Pahoia.

Hawai'i Women's Legislative Caucus Support National Anti-Opioid Abuse

By WAYNE YOSHIOKA - JAN 17,2017

<http://hpr2.org/post/hawaii-womens-legislative-caucus-support-national-anti-opioid-abuse>

(from left-right) Representative Andria Tupola, Linda Ichiyama, Della Au-Bellati, Senator Rosalyn Baker, Representatives Lauren Matsumoto, Dee Morikawa, Joy San Buenaventura and Beth Fukumoto-Chang.



4TH ANNUAL
HAWAII
COMMUNITY
COLLEGE DAY

Friday, February 24, 2017
9am to 1pm

UNIVERSITY OF HAWAII
HAWAII
COMMUNITY COLLEGE

HAPPENING AT
MANONO CAMPUS
IN HILO!

FREE AND OPEN
TO THE PUBLIC!

Our 4th Annual Hawaii CC Day celebrates the college's value to our Hawai'i Island community by engaging our current students, faculty, and staff with future students and the community for a fun day of demonstrations, exhibits, displays and more. Explore our 26 academic programs, campus resources and services!

Call (808) 934-2800 for more information. #HawaiiCCDay2017

Hawaii Community College is an equal opportunity institution. Individuals with disabilities are invited to participate in all programs and activities. Accessible routes and facilities are provided. For more information, contact the Office of Disability Services, 2000 University Avenue, Hilo, HI 96720. (808) 934-2800. TDD: (808) 934-2800. Email: ds@hawaii.edu

4TH ANNUAL
HAWAII
COMMUNITY
COLLEGE DAY

Friday, February 24th
2017, 9am—1pm

(For more
information, please
call (808) 934-2800.)

BIG ISLAND INTERNATIONAL
MARATHON

Race Date: Sunday,
March 19, 2017

Location: Bay Front, Hilo,
Hawaii (Canoe Beach Area)

Start Times:

Marathon (Map): Race Start:
6 AM Cut Off Time: 1 PM

Half-Marathon (Map): Race Start: 6:15 AM Cut Off Time: 1
PM

5K(Map): Race Start: 6:40 AM 2 Mile

Fun Walk: Race Start: 7:00 AM (IS NOT TIMED)

Register online at: <http://hilomarathon.org/>

2

Hawaii Volcanoes National Park to Offer Free Admission on 10 Days in 2017

Hawaii National Park, Hawai'i – There are 10 more reasons to enjoy Hawai'i Volcanoes National Park in 2017! The park will offer free admission to all on 10 days in 2017.

The 2017 entrance fee-free days are:
 January 16: Martin Luther King, Jr. Day
 February 20: Presidents Day
 April 15-16 & April 22-23: National Park Week Weekends
 August 25: National Park Service Birthday
 September 30: National Public Lands Day
 November 11-12: Veterans Day Weekend

For more information check out: https://www.nps.gov/havo/learn/news/20161130_pr_2017feefree.htm



INTERNATIONAL NIGHTS 2017

Friday & Saturday, February 10 & 11, 2017
7:30 pm at the UH Hilo Performing Arts Center
Please visit: <http://www.hilo.hawaii.edu/international/IN.php> for ticket information



Timeless Treasures-Dietrich Varez

Volcano Arts Center will be presenting a collection of original paintings by Big Island artist Dietrich Varez. The exhibition is titled "Timeless Treasures" and will be open to the public from

January 7th and continue through February 12th. A special reception honoring Varez will be held on Saturday, January 14th from 5:00pm-7:00pm.

For more information, please visit: <http://volcanoartcenter.org/new-exhibit-timeless-treasures/>

STATE OF HAWAII
911 CALL IF YOU CAN
TEXT IF YOU CAN'T

- Requires a text enabled/capable cellular phone.
- It is necessary that Location Services on the phone be turned on.
- Text messages only. No group messages, photos, videos or emojis will be accepted.
- Text messages must be brief and easily understood.
- Use plain English. No abbreviations, short cuts or slangs.
- Text to 9-1-1 services may not be available everywhere and at all times.
- No guarantee a text message will be sent or received.
- Voice call preferred. Text only when you cannot make a call.

www.hawaitextto911.com

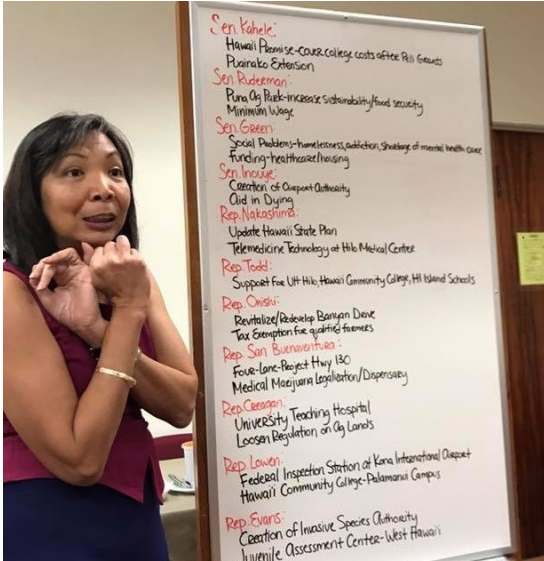
Have you been in a situation where you were unable to call 911.

Hawaii has Text to 911. For more information visit:

<http://ags.hawaii.gov/hawaii-enhanced-9-1-1-board/text-to-911/>

Hawaii State Capitol

January , 2017



- Sen. Kahaie:**
Hawaii Promise-Cover college costs after Pell Grants
Punaako Extension
- Sen. Rudeeman:**
Puna Oa Park-increase sustainability/food security
Minimum Wage
- Sen. Green:**
Social Problems-homelessness, addiction, shortage of mental health care
Funding-healthcare/housing
- Sen. Inouye:**
Creation of Cleanup Authority
Aid in Dying
- Rep. Nakagami:**
Update Hawaii State Plan
Telemedicine Technology at Hilo Medical Center
- Rep. Todd:**
Support for UH Hilo, Hawaii Community College, HI Island Schools
- Rep. Oniz:**
Revitalize/Re-develop Banyan Drive
Tax Exemption for quality homes
- Rep. San Buenaventura:**
Four-lane Project Hwy 130
Medical Marijuana Legislation/Dispensary
- Rep. Cannon:**
University Teaching Hospital
Loosen Regulation on Ag Lands
- Rep. Low:**
Federal Inspection Station at Kaneohe International Airport
Hawaii Community College-Palamarua Campus
- Rep. Evans:**
Creation of Invasive Species Authority
Invasive Assessment Center-West Hawaii

Hawaii Island Legislative Caucus 2017. Discussing goals and priorities with fellow Big Island Legislators.



At the grand openings of county councilor Eileen Ohara's office. With Julie and Bob Jacobson (both former county council dist. 5), Ralph Boyea, Murphy and County Councilor Eileen Ohara.



With Rene Siracusa at Malama O Puna's grand opening next door to Puna County Council office

Some Bills I Plan to Introduce This Session:

Albizia and Private Property: Authorizes a property owner or agent like BIISC to eradicate albizia trees before they become hazardous when absent landowner ignores multiple notices. Provides a defense from criminal trespass.



Annulment, Divorce, and Separation: Imposes an automatic restraining order that preserves the financial assets of the parties and their dependents upon the commencement of annulment, divorce, or separation court action.



Relating to Health; Advanced Life Support Ambulance: Purchase and staffing for an advanced life support ambulance to be based in Puna. With the significant population increase, and advanced life support ambulance is needed.



PayDay Loans: Caps the allowable interest rate of a payday loan at forty-five percent from its present annual rate of over 425% and requires reimbursement of the prorated interest amount charged upon prepayment.



Drug Treatment: Clarifies that treatment drugs such as suboxone may be used in the maintenance or detoxification of narcotic dependent persons.

Property Exemptions: Creates an updated safety net of assets for Hawaii families who are struggling to earn a living under heavy debt obligations by increasing the amount of the exemption from attachment or execution by exempting one month of child support and spousal support; increasing real property exemption from \$25,000.



Private Roads: Requires counties to create special improvement districts in subdivisions with privately owned roads that do not have existing procedures to maintain the private roads. Prohibits the approval of new subdivisions unless a county can certify there are mechanisms or procedures in place to ensure the private roads are maintained adequately.



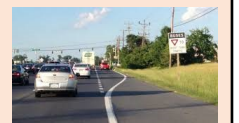
Relating to Family Law: Temporarily requires parties in a divorce proceeding to refrain from removing a child from island, removing the child from school, interfering with custodial arrangements, or discontinuing payments on financial obligations. Expedites mediation and financial and property disclosure.



Relating to Capital Improvement Projects: Appropriates funds for capital improvement projects for the benefit of the 4th Representative District. Projects include: Renewed request for construction of a bypass road to Highway 130; Construction of a Pahoa Elementary school cafeteria; For Pahoa High and Intermediate: Covering for the middle school playcourt; Covered walkway from the cafeteria to the upper portables; and Upgrade the track field.



Relating to Transportation: Feasibility study on whether to establish a boat ramp at Kapoho bay. The lava threat has shown that Pohoiki boat ramp could not be used for a ferry or cargo.



Some Bills I Will Be Introducing This Session (Cont.):

Relating to Transportation: Permits a driver of a vehicle to make a right turn from the shoulder of a roadway with a speed limit of forty-five miles per hour or higher under certain conditions and it is reasonably safe to turn.



Relating to Homeowners' Associations: Expands the law on planned community associations to include homeowners' associations.

Relating to Medical Marijuana Collectives: Authorizes certification and regulation of medical marijuana collectives comprising qualifying patients.



Relating to Marijuana: Creates a Hawaii law legalizing Marijuana based on the California version of the bill.

Relating to Medical Marijuana Distribution: Amends the law to allow transportation of medical marijuana for testing between patients and their caregivers who grow their own marijuana and the certified laboratories.



Form an Albizia Control Team in Your Neighborhood!

Please visit: the BIISC Website at: <http://www.biisc.org/neighborhood-albizia-control-teams/> for a program overview and guides to get started.

*****ALBIZIA UPDATE*****

This year, I plan to introduce a bill that aims to control Albizia growth and reduce the risk of Albizia related property damage. The wood of Albizia trees tend to be very fragile and easily broken which, makes this invasive tree especially dangerous to property and structures that neighbor Albizia growths. While Albizia trees have been successfully removed on many properties, owners of properties adjacent to private properties containing Albizia trees are subject to the hazardous conditions presented by owners who are unwilling to remove Albizia trees and/or are unresponsive to inquiries from owners of adjacent properties. The bill I plan on introducing this session would make it easier for a property owner or agent, under certain conditions, to remove any Albizia trees that pose a potential danger to the neighboring property at the expense of the property being entered.

The Hawaii Public Access Room has provided how-to videos for the public. Please follow the links below to learn more about registering on the Hawaii State Legislature's website and submitting testimony online.

Registering: <https://www.youtube.com/watch?v=HIHAnelf7Tw>

Submitting testimony: <https://www.youtube.com/watch?v=B6nAkiYCXRA>

The Hawaii Public Access Room serves the citizens of Hawai'i by providing facilities, services and equipment to enhance their ability to participate in the legislative process. Please visit the [Hawaii Public Access Room Website](#) for more information about their services.



Last session my squatters bill passed. This authorized HOA's and neighbors to evict squatters. In this case, and many others like it, the problem seems to be getting out-of-state landowners and the banks involved in the process of evicting squatters that pose a threat to public health and safety.

NUISANCE NEIGHBORS: Ohai Street house fire sheds renewed light on island's squatter dilemma

By IVY ASHE Hawaii Tribune-Herald



HOLLYN JOHNSON/Tribune-Herald Allen Filoteo, left, manager of Riverside Apartments, and neighborhood resident Don Medeiros stand Wednesday in front of what remains of the house at 375 Ohai St.

Published January 14, 2017 - 12:05am

<http://www.hawaiitribune-herald.com/news/local-news/nuisance-neighbors-ohai-street-house-fire-sheds-renewed-light-island-s-squatter>

A destructive house fire last week underscores the problem of squatters on Hawaii Island.

The fire broke out the morning of Jan. 7 at 375 Ohai St. in Hilo. The Hawaii Fire...

January 19, 2017-Asset-Forfeiture

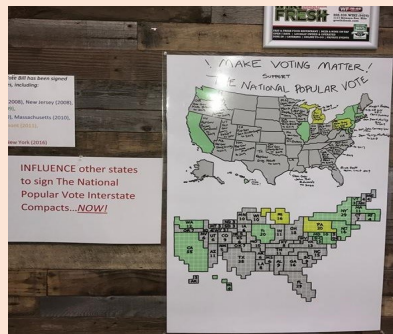
Today's star-advertiser referred to my asset-forfeiture reform bills I introduced last year and have re-introduced this year (HB 171, passed first reading). The bill specifies that no property shall be forfeited unless the owner or interest-holder of the property has been convicted of a covered offense or indicted for a covered offense and there is a significant risk that the property will be destroyed or otherwise made unavailable, and the State has met its rebuttable presumption for forfeiture. Requires the State to show by clear and convincing evidence that a claimant's interest in the property is subject to forfeiture.



Link the article: <http://www.staradvertiser.com/2017/01/19/hawaii-news/group-gives-state-a-d-for-asset-seizure-program/>

For updates on the bill status: http://www.capitol.hawaii.gov/measure_indiv.aspx?billtype=HB&billnumber=171

Thankful that county council chair Valerie poindexter and state dem chair Tim Deveer made time to be with us in Hilo to talk about the national popular vote compact. Hawaii is one of 10 states + DC which passed the act. Compact requires states that pass the compact to use entire electors in the state to vote what the national popular vote is for president. It is triggered when enough states consisting of 270 or more electors pass the NPVC. By passing the NPVC we don't need a constitutional amendment to get rid of the electoral college.

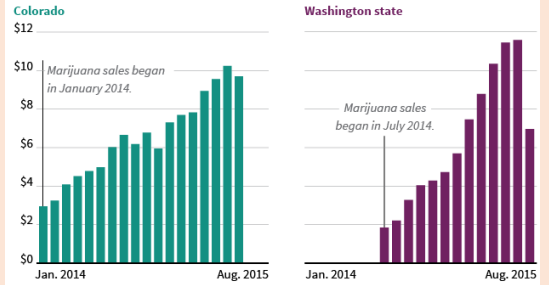


Pioneer Pot States Have Collected More Than \$200 Million In Marijuana Taxes

http://www.huffingtonpost.com/entry/washington-colorado-marijuana-taxes_us_55d6133be4b07addcb45e65d

Colorado And Washington Are Making Millions Off Marijuana Sales

Marijuana tax revenue, since sales began through present, in millions of dollars



Sources: Washington State Liquor and Cannabis Board, Colorado Department of Revenue

THE HUFFINGTON POST

Keeping mulch free of little fire ants

Be vigilant in Little Fire Ants infestations if you drop off green waste to the West and East Hawaii mulching facilities; this can help prevent further infestation throughout the island. For more information, please visit: www.littlefireants.com



January 4, 2017-

Much awaited traffic light is finally being constructed. It is safer because Orchidland commuters will be able to safely make a left onto Hwy 130 towards Hilo and pedestrians going across the street to the bus stop will be protected more but I expect there will be long delays during early morning commutes for HPP drivers who now will have to stop for a light instead of just turning right onto the shoulder lane. The funded alternate road should alleviate the traffic and I'll continue talks to DoT as to whether they will build that alternate road.

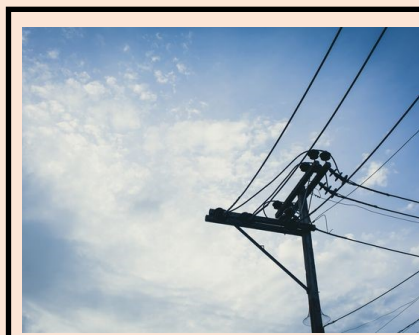


Work begins on Highway 130 traffic light

By IVY ASHE Hawaii Tribune-Herald

<http://hawaiitribune-herald.com/news/local-news/work-begins-highway-130-traffic-light>

Cost is the major obstacle in securing affordable broadband in Puna. The 2015 County-State feasibility study shows that low-cost wireless broadcasting does not reach areas of Kapoho or Kalapana because of terrain. Is there any interest in forming a co-op like that in Tennessee or rural Ireland?



Elusive high-speed internet sprouts in rural Tennessee

January 8, 2017

As Tennessee officials grapple with how to improve broadband access in rural areas as a means for economic improvement, Highland and other companies in rural Tennessee are demonstrating how grant dollars can...

TENNESSEAN.COM | BY JAMIE MCGEE

jmcgee@tennessean.com

Visiting Hawaii Community College's Panaewa Ag farm on January 6, 2017



Rep-elect Chris Todd was educated with the rest of us as to what they need to educate future farmers and landscapers.



Visiting Hawaii Community College's Panaewa Ag farm. Very pleased to hear that 90% of what they produce serve the culinary program as a true farm-to-table.



At Big Island Labor Alliance conference where the Big Island delegation learned about the concern regarding the protection of local jobs.



Had a great time participating in the High Technology Development Corporation (HTDC) annual Innovation Crawl!



Addressing the press, with fellow members of the Hawaii Women's Caucus, regarding a bipartisan bill that would tighten rules for prescription opioids.

Would you like to learn more about the legislative process?

The House Majority Staff Office and Hawaii State House of Representatives, with contributions from the Senate Majority Research Office Hawaii State Senate have put together a "Citizen's Guide to Participation in the Legislative Process." The document can be found at: <http://www.capitol.hawaii.gov/citizensguide.aspx>. Learn about How a Bill Becomes Law, Types of Bills and Resolutions, Legislative Timetables and Process, Committee Testimony, Leadership and Standing Committees, Legislative Resource and Reference Centers, and the Citizen Participation Factsheet.



My 2017 Legislative Staff

Born in Honolulu, **Blyth Iwasaki**, lived in California as a youngster for a few years before moving to the Big Island.

Blyth knows me well, as she was my paralegal for over 7 year before relocating to O'ahu.

John Honda graduated from the University of Hawaii at Manoa with a B.S. in Travel Industry Management. This year, John will be joining the team as our legislative aide. John is very excited to be a part of the staff and looks forward to the challenges of this year's session.



Pictured from left to right: Ka Nani Among, Intern; Blyth Iwasaki, Office Manager; Representative Joy San Buenaventura; Allison Jacobs, Committee Clerk; John Honda, Legislative Aide.

Originally from Kailua, **Ka Nani Among** is currently living on Oahu and attending the University of Hawaii West O'ahu where she is pursuing a degree in Political Science. She plans to further her education at Richardson Law School in Fall 2018. This year, we are very fortunate to have Ka Nani bring her talents to the internship position.

Allison Jacobs was a staff member with the House during the 2016 session. This year, we are very fortunate to have Allison join the team as our Committee Clerk. With Allison's expertise in the legislative field we can look forward to a very productive session.

If you have a community event that you want featured in my newsletter/e-newsletter e-mail us at b.iwasaki@capitol.hawaii.gov. No guarantee that it will be included; however, we will do our best.

Thank you for subscribing to my E-Newsletter!
 This allows me to send out more information about what's going on here at the State Legislature. If you know anyone who would be interested in receiving the E-Newsletter please have them contact my office at: b.iwasaki@capitol.hawaii.gov

Please FOLLOW my Twitter and Instagram!
<https://twitter.com/repjoydistrict4>
<https://www.instagram.com/repjoysanbuenaventura/>



Be sure to LIKE my page!
<https://www.facebook.com/repjoydistrict4>

E-mail Address: repsanbuenaventura@capitol.hawaii.gov
 Visit my capitol website for updates on bills and other legislative activities:
<http://capitol.hawaii.gov/memberpage.aspx?>

Vice Chair: Judiciary
Committee Member: Transportation and Housing
Contact Information:
 Hawaii State Capitol, Room 302, 415 South Beretania Street, Honolulu, Hawaii 96813
Telephone: (808)586-6530
Neighbor Island Access dial 974-4000 then extension 66530#, after the recording.

