

MESSAGE FROM TROY



REPRESENTATIVE  
**Troy N. Hashimoto**

# News & Updates

Aloha! Now that the 2022 election has concluded, I want to remind my constituents that we are now House District 10, which encompasses Waiehu, Wailuku, Waikapu, Sand Hills, and a portion of Kahului (near the stadium). I will be joined by 16 new colleagues in the House and many changes will be taking place, including committee assignments and even office locations.

The 2023 Legislative Session officially begins on Jan. 18, but I have been working hard since the end of last session attending many community events and meetings. I find that every opportunity to connect with constituents and learn more is key to being a successful legislator.

In this update, I want to share with you some of the events that I attended and also important news impacting our district.

As the holiday season approaches, continue to stay safe and healthy. I would like to wish you and your family a wonderful holiday season! I look forward to having many of our holiday celebrations and traditions come back into full-swing this year!

If you have any ideas or priorities, please do not hesitate to contact me either by email at [rephashimoto@capitol.hawaii.gov](mailto:rephashimoto@capitol.hawaii.gov) or by phone at (808) 586-9444 so I can include them in the upcoming legislative session. It truly is an honor serving as your representative and I look forward to the upcoming year!

Mahalo,



## WAILUKU HOUSING: KUIKAHI VILLAGE PROJECT

In October, the Maui County Council voted to approve the Kuikahi Village, a project by Alaula Builders set for 14 acres mauka of Honoapi'ilani Highway and adjacent to Kuikahi Drive, below Wailuku Heights. The project is 202-units, 100 percent workforce housing project that will include a mix of single-family, multifamily, duplex, live-work townhomes and tiny homes and will be marketed to households earning at or below 140 percent of the area median income.

Proposed prices for the lowest of incomes are around \$236,000 for a tiny home model and around \$754,000 for a single-family residence in the highest range of incomes.

The project also includes five spot parks with exercise equipment, walking and biking paths, a playground, a pavilion and a 40-foot buffer along Kuikahi Drive. Construction is predicted to start late next year and move-ins to start in mid- 2024.



If you would like more information or to sign up for updates, please go to <https://alaula.org/kuikahi>



In June, the Department of Land and Natural Resources Division of State Park announced the closure of 'Iao Valley State Monument for the final phase of a slope stabilization project and parking lot improvements until January 15, 2023. The Department announced as of November that the project will take longer than expected and will remain **closed through February 2023**.

The first phase of slope stabilization and repair project began in 2017 following a historic flood in 2016 that caused extensive damage to state, county and private lands. You can find information and updates on the Department of Land and Natural Resources Division of State Parks page at: <https://dlnr.hawaii.gov/dsp/parks/maui/iao-valley-state-monument/>



Attending the Hawai'i State Board of Education strategic community meeting for the Maui hosted by our Board member Kili Namau'u along with members Makana McClellan, Ken Kuraya and Shanty Asher.





## UNIVERSITY OF HAWAI'I MAUI COLLEGE UPDATES

# Addressing the statewide nursing shortage

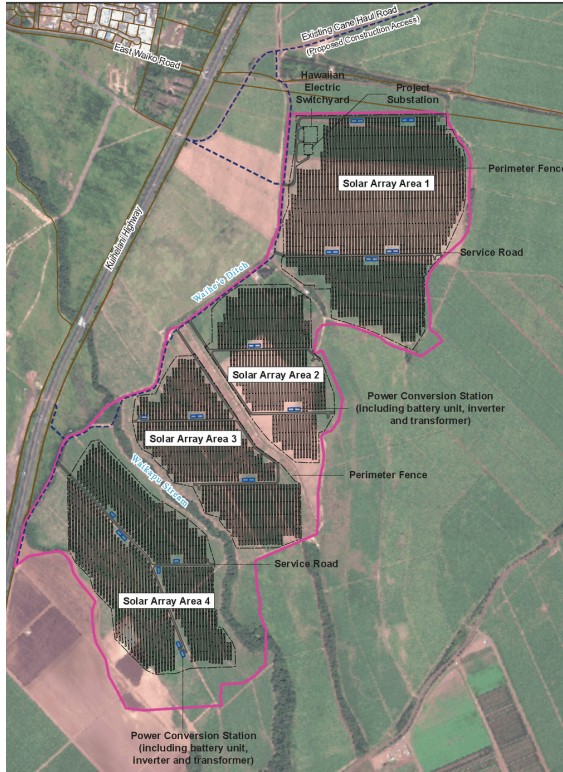
In October, Governor David Ige released the funding for 39 new instructor positions which will support approximately 230 nursing students and to support University of Hawai'i nursing programs statewide, including neighbor island programs.

UH Maui College will receive three new positions and will have access to funding for professional development training for new nursing instructors. The long-term goal is to help gain new competencies in nursing education.

Prior to the COVID-19 pandemic, state nursing schools were able to graduate an adequate number of nurses to meet workforce needs, according to the Hawai'i State Center for Nursing. However, in the last two academic years, there has been a loss of 15 percent of state-funded nursing positions.

## NEXT STEPS KUIHELANI SOLAR + STORAGE

In July, AES' Kuihelani Solar project broke ground for the start of their construction. The project is located in Central Maui, off Kuihelani Highway and utilizes approximately 450 acres D & E rated agricultural lands. AES has predicted that the project may be completed by October of 2023. The project will generate 15 percent of Maui's energy needs. It is estimated that these solar panels and batteries will divert over 1.9 million barrels of oil over 25 years and will contribute to Hawaii reaching its 100 percent renewable energy goal by 2045.



If you have any questions or concerns please reach out to the Community Outreach Representative by email at [KuihelaniSolar@aes.com](mailto:KuihelaniSolar@aes.com) or call the Project Hotline at (808) 800-3942. For updates on this project, go to [www.aes.com/kuihelani-solar-storage-project](http://www.aes.com/kuihelani-solar-storage-project)



REPRESENTATIVE  
**Troy N. Hashimoto**

## Capital Improvement Project Releases



Governor David Ige announced the release of funding for a variety of projects which were appropriated by the Legislature in a joint effort with Rep. Hashimoto and Sen. Keith-Agaran. Most CIP projects are paid for with borrowed bond funds and must be a large scale renovation, repair, or new construction.

### \$150,000 for Pu'u Kukui Elementary School



To finance land acquisition to expand the school campus to help with overcrowding.

### \$800,000 for 'Iao Intermediate School

To finance land acquisition to expand the school campus to help with overcrowding.



### \$150,000 for Waihe'e Elementary School

To remove and replace the existing playground equipment.



### \$600,000 for H.P. Baldwin High School

For the design of a girls locker room. Currently, students use County facilities for athletics and physical education classes.



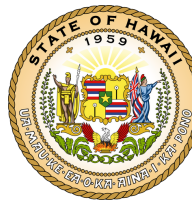
### \$270,000 for Wailuku Elementary School

For school-wide improvements to comply with ADA standards.



### \$225,000 for Hawaii Public Housing Authority

To develop a master plan for the redevelopment of Kahekili Terrace. It will include an environmental review, contaminated soil mitigation, Complete Streets elements and multi-modal mobility options, and evaluation of mixed-use development and infrastructure needs.



Touring the University of Hawai'i Maui College MEO Headstart location identifying future locations for early childhood education sites with former Representative Sylvia Luke, Representative Kyle Yamashita and University of Hawai'i staff.





## "THE HOUSE OF LIFE" Supporting Maui's vulnerable

I was fortunate to be able to tour and talk with staff of **Ka Hale A Ke Ola Homeless Resource Centers, Inc.** at their Wailuku location.

For the past 30 plus years, nonprofit KHAKO has been offering services such as a comprehensive resource center that provides emergency shelter, life skills training, case management, a primary care medical clinic, and facilities for child care.



With Executive Director Monique Ibarra, Shelter Program Director Kurt Schmidt, Housing Program Manager Mary Nakooka, Director of Operations Lee Thompson, Food Services Director Todd Andrew Aken Kanoa and Board member Alvin Tagomori.

## IN THE COMMUNITY



Past COVID-19 food drives at the Binhi at Ani Filipino Community Center

### What is National Foundation Day?

Every year, on October 3rd, Koreans celebrate the founding of the first Korean state, which was established over 4,000 years ago.



Attending the Republic of Korea National Foundation Day and Armed Forces Day event hosted by the Consul-General of the Republic of Korea Hong, Seok-in in Honolulu.



In October, the County of Maui Department of Transportation unveiled six new GILLIG BAE hybrid electric buses. The 35-foot ADA low-floor energy efficient buses will be deployed throughout Maui including Wailuku and can carry up to 40 passengers.

## SHINNING THE SPOTLIGHT Honoring those in our Community

Congratulations to each of the awardees at the 11th annual **Maui High School Foundation 2022 Hall of Honor Awards Banquet**. Honorees include **Senator Gilbert Keith-Agaran** was recognized with the Award of Excellence, **Earl Tanaka** was recognized with the Silversword Heritage award, **Yaemi Yogi** was recognized with the Spirit of Maui award, **Keith Imada** was recognized with the Inspiration Award and **Lynnette Ducosin** was recognized with the Saber Spirit award.



With Sen. Keith-Agaran's family & friends



With Yaemi Yogi

Celebrating Wailuku's own **Kalani Pe'a** for his **2022 Grammy Award for Best Regional Roots Music Album** for his newest album, Kau Ka Pe'a. This is Kalani's third Grammy Award which he won for his first album E Walea in 2017 and his second album No 'Ane'i in 2019.



Congratulations to **Mercer "Chubby" Vicens** for being honored with the **Legacy Award** from Big Brothers Big Sisters of Maui for all of his work on the Board of Directors and his virtual role in ensuring that BBBS Maui will always have a home.



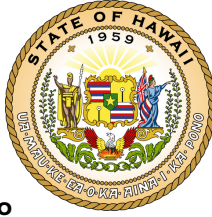


REPRESENTATIVE

# Troy N. Hashimoto

Hawai'i State Capitol  
415 S. Beretania Street, Room 332  
Honolulu, Hawai'i 96813

Contact: (808) 586-9444  
RepHashimoto@capitol.hawaii.gov  
Follow: [linktr.ee/reptroyhashimoto](https://linktr.ee/reptroyhashimoto)



## In case you missed it...

Latest news and events around Maui County

### Improvement projects for War Memorial Football Stadium and Satoki Yamamoto Track and Field Facility

The repair projects will keep the facilities closed until **May 4, 2023**. The repair projects include track resurfacing and repainting; pole vault runway resurfacing; long jump renovation, repairs and resurfacing; bleacher chain-link fence demolition and replacement; and bleacher concrete repairs.



### EXPRESS pilot to expand student ridership options with county bus passes

Hawai'i Department of Education announced in September a pilot program with the Counties to expand subsidized county bus passes for high schoolers grades 9-12. The pilot program aims to help mitigate the impacts of the national school bus driver shortage. Recipients will receive passes good for each month through July 2023. Interested students with an active HDOE student ID number may sign up online at <https://portal.k12.hi.us/express/>.

## Reminder to reapply for Real Property Long-Term Rental Exemption Deadline is Dec 31, 2022

Property owners whose rental or lease agreement with tenants expires this year have until Dec. 31, 2022, to reapply for Maui County's 2023 long-term rental exemption program and qualify for an exemption of up to \$200,000.

To qualify for the long-term rental exemption of up to \$200,000, the real property must be occupied as a residential long-term rental as of Jan. 1, 2023. A property owner must have a signed contract to lease for 12 consecutive months or longer to the same tenant.

The long-term rental exemption claim form can be found at [www.mauipropertytax.com](http://www.mauipropertytax.com). Click on the "Forms" tab, then "Long Term Exemption" under "Exemption Forms." To receive confirmation of receipt, email your claim form and a legible copy of the signed contract to lease to the Division at [RPA@co.maui.hi.us](mailto:RPA@co.maui.hi.us) by the Dec. 31 due date.

November-  
December  
2022  
Newsletter

## TAO INTERMEDIATE SCHOOLS 3RD ANNUAL MONSTER MASH



Such a fun filled family night at TAO Intermediate thanks to their dedicated staff like 8th Grade Vice Principal Mitchell Wendorff and Student Activities Coordinator Ed Garcia.