

Application Submittal Checklist

The following items are required for submittal of the grant application. Please verify and check off that the items have been included in the application packet.

- X 1) Hawaii Compliance Express Certificate (If the Applicant is an Organization)
- X 2) Declaration Statement
- X 3) Verify that grant shall be used for a public purpose
- X 4) Background and Summary
- X 5) Service Summary and Outcomes
- X 6) Budget
 - a) Budget request by source of funds ([Link](#))
 - b) Personnel salaries and wages ([Link](#))
 - c) Equipment and motor vehicles ([Link](#))
 - d) Capital project details ([Link](#))
 - e) Government contracts, grants, and grants in aid ([Link](#))
- X 7) Experience and Capability
- X 8) Personnel: Project Organization and Staffing



Megan Fox, Executive Director

1/17/24

AUTHORIZED SIGNATURE

PRINT NAME AND TITLE

DATE



**STATE OF HAWAII
STATE PROCUREMENT OFFICE**

CERTIFICATE OF VENDOR COMPLIANCE

This document presents the compliance status of the vendor identified below on the issue date with respect to certificates required from the Hawaii Department of Taxation (DOTAX), the Internal Revenue Service, the Hawaii Department of Labor and Industrial Relations (DLIR), and the Hawaii Department of Commerce and Consumer Affairs (DCCA).

Vendor Name: Malama Kauai

DBA/Trade Name: Malama Kauai

Issue Date: 01/15/2024

Status: Compliant

Hawaii Tax#: [REDACTED]
New Hawaii Tax#: [REDACTED]
FEIN/SSN#: XX-XXX7488
UI#: XXXXXXX1691
DCCA FILE#:

Status of Compliance for this Vendor on issue date:

Form	Department(s)	Status
A-6	Hawaii Department of Taxation	Compliant
8821	Internal Revenue Service	Compliant
COGS	Hawaii Department of Commerce & Consumer Affairs	Exempt
LIR27	Hawaii Department of Labor & Industrial Relations	Compliant

Status Legend:

Status	Description
Exempt	The entity is exempt from this requirement
Compliant	The entity is compliant with this requirement or the entity is in agreement with agency and actively working towards compliance
Pending	A status determination has not yet been made
Submitted	The entity has applied for the certificate but it is awaiting approval
Not Compliant	The entity is not in compliance with the requirement and should contact the issuing agency for more information

Application for Grants

If any item is not applicable to the request, the applicant should enter "not applicable".

I. Certification – Please attach immediately after cover page

1. Hawaii Compliance Express Certificate (If the Applicant is an Organization)

If the applicant is an organization, the applicant shall submit one (1) copy of a Hawaii Compliance Express Certificate from the Comptroller of the Department of Accounting and General Services that is dated no earlier than December 1, 2023.

2. Declaration Statement

Mālama Kaua'i affirms its compliance with [Section 42F-103, Hawaii Revised Statutes](#).

3. Public Purpose

Mālama Kaua'i affirms this grant will be used for a public purpose pursuant to [Section 42F-102, Hawaii Revised Statutes](#).

II. Background and Summary

This section shall clearly and concisely summarize and highlight the contents of the request in such a way as to provide the State Legislature with a broad understanding of the request. Please include the following:

1. A brief description of the applicant's background;

Founded in 2006, MK is a community-based nonprofit that focuses on increasing local food production and access for Kaua'i. With equity and resilience at its core, MK:

- Grows community capacity by leveraging workforce and economic development efforts, public-private partnerships and innovative community-based programming.
- Spearheads increased food access for our island's most vulnerable, leads community food system development and provides technical assistance and resources to food producers.
- Alleviates inequities by prioritizing the needs of small and minority farmers and food insecure residents.
- Supports farmers and our community through many programs and projects including farm to school, farmer support programs, workforce development initiatives, and emergency response.
- Increases local food access for low-income residents through farm to school, gleaning (harvesting and redistributing unwanted/extra produce), keiki summer meal programs, food box distributions, Supplemental Nutrition Assistance (SNAP) / DA BUX Double Up Food Bucks incentives, and more.

2. The goals and objectives related to the request;

The goal of the Poultry Egg Education Project (PEEP) Scaling program is to provide advanced resources and education for small poultry egg producers with education, financial support, technical assistance, and distribution support for scaling their small egg farms into profitable farming operations. This program's larger goals are to increase local egg production and access to eggs within the local community.

Our objectives and activities include:

1. delivery of 6 advanced poultry egg production workshops, promoted and available statewide; also recorded and added to YouTube channel for an ongoing resource
2. a minimum of 30 egg producers statewide will increase their knowledge of poultry egg production through this series of online workshops focused on topics such as flock management, incubation and hatching for sustainable flock expansion, etc.
3. 7 to 15 Kaua'i egg producers will increase the size of their flock to 100-200+ birds to become more sustainably sized operations
4. an increased local egg supply is made available to the Kaua'i community, especially to those using SNAP/EBT and WIC
5. to continue to scale MK's cooperative egg washing program to ensure that locally produced eggs can be safely and compliantly washed and brought to larger commercial markets

3. The public purpose and need to be served;

Supplying fresh local eggs to the community, especially to underserved populations, goes beyond meeting a basic nutritional need. It contributes to food security, economic development, environmental sustainability, community health, and cultural preservation, making it a vital public service. Some of these public benefits include:

- **Nutritional Benefits:** Local eggs are often fresher and may contain higher nutritional value compared to commercially produced eggs that might travel long distances. Access to fresh eggs contributes to a more nutritious diet, providing essential proteins, vitamins, and minerals.
- **Food Security:** Offering local eggs helps enhance food security within a community. By establishing a local source of this staple food item, communities are less dependent on external sources, reducing vulnerability to disruptions in the supply chain.
- **Supporting Local Economy:** Engaging in local egg production supports the local economy by creating jobs and economic opportunities for farmers and businesses in the community. It fosters a sustainable economic ecosystem, keeping resources within the local region. Assisting small, primarily minority-owned, egg producers in growing and stabilizing their businesses to a

scale that is profitable supports their identified needs in keeping their businesses going.

- **Reduced Environmental Impact:** Local egg production often involves shorter transportation distances, leading to a reduced carbon footprint compared to eggs transported over long distances. This aligns with environmentally friendly practices, contributing to sustainability.
- **Community Health:** Access to fresh, locally sourced eggs can positively impact community health. Eggs are a versatile and affordable source of high-quality protein, essential for overall well-being. Improving community health contributes to a stronger and more resilient population and reduced public health costs and negative impacts..
- **Educational Opportunities:** The PEEP Scaling Program can also serve as an educational tool for the community. It offers opportunities for learning about sustainable agriculture, responsible farming practices, and the importance of supporting local businesses.
- **Addressing Food Deserts:** Underserved communities often face challenges in accessing fresh and healthy food options, leading to the existence of food deserts. Providing local eggs directly through MK’s food hub programs which offer delivery and accept Federal subsidies such as SNAP/EBT and WIC addresses this issue, ensuring that residents have access to a valuable source of nutrition.
- **Cultural and Community Connection:** Local food production fosters a sense of community and connection to cultural practices. By providing fresh local eggs, communities can maintain and celebrate food traditions, promoting a shared identity and sense of belonging.
- **Increasing Food Safety:** the majority of currently available local eggs in our community are not washed in commercial kitchens, stored compliantly, or have traceability protocols in place. By providing a cooperative system for our eggs to reach the market safely and compliantly, we are contributing to a safer food supply chain that prevents illness and illegal operations.

4. Describe the target population to be served; and

Population to be served	How they benefit
7 to 15 Kaua'i egg producers	Provided education, technical assistance, and financial support in scaling their flocks for business sustainability
30+ egg producers	Provided education to support improved flock management,

statewide	and possibly educating new egg producers to entering the field
Community statewide	Increase in local egg availability and accessibility, safer food supply chain for eggs on Kauaʻi, and the other public service benefits mentioned in the previous section

5. Describe the geographic coverage.

This project primarily serves Kauaʻi island; however, egg producers statewide will be allowed to participate in the online educational portions of the program, providing statewide benefit.

III. Service Summary and Outcomes

The Service Summary shall include a detailed discussion of the applicant’s approach to the request. The applicant shall clearly and concisely specify the results, outcomes, and measures of effectiveness from this request. The applicant shall:

1. Describe the scope of work, tasks and responsibilities;

The goal of the Poultry Egg Education Project (PEEP) Scaling program is to provide advanced resources and education for small poultry egg producers with education, financial support, technical assistance, and distribution support for scaling their small egg farms into profitable farming operations. This program’s larger goals are to increase local egg production and access to eggs within the local community.

An estimated 7 to 15 Kauaʻi egg producers will participate in the funding portion of the program and will receive the following resources to grow to a 100-200 hen operation over the next two years, depending upon producer readiness for expansion:

Supplies & Support Provided to Kauaʻi Egg Producers	100-Hen Operation Target	200-Hen Operation Target
Expansion supplies budget to meet production growth goals for items such as hatching/incubation equipment, expanded feed storage capacity, new coops/tractors/runs for chicken protection, automation equipment for feeding/watering/lighting, roll-down egg collection trays for nesting boxes, etc.	\$2,000	\$4,000
# of chicks provided	50 chicks (25 every 6 months)	100 chicks (50 every 6 months)
Chick feed (approx. 20 weeks of medicated chick	\$1,000	\$2,000

feed @ approx. \$1/wk per bird)		
Continuing Education	6 Workshops 1:1 Technical Assistance	6 Workshops 1:1 Technical Assistance
# of Birds in Peak Production with Flock Size	50 Birds	100 Birds
Eggs Supplied Weekly for MK Distribution Upon Maturity	20 dozen	40 dozen

2. Provide a projected annual timeline for accomplishing the results or outcomes of the service;

This project will be a 12-month project, initiated upon approval to proceed by the state. The Program Manager will be responsible for executing this work plan. A general timetable will be:

Quarter	Activities
1	Announce program, recruit and select participants, and execute MOUs Develop plan with each producer to expand capacity for flock expansion Begin purchasing producer supplies to ready their farms for expansion Order first round of chicks for participants Schedule, promote, and host 1 online workshop Ongoing operations of cooperative egg washing and distribution
2	Continue to purchase producer supplies to ready their farms for expansion Receive first round of chicks and purchase chick feed for producers Schedule, promote, and host 2 online workshops Ongoing operations of cooperative egg washing and distribution
3	Schedule, promote, and host 2 online workshops Order second round of chicks for participants Ongoing operations of cooperative egg washing and distribution
4	Receive second round of chicks and purchase chick feed for producers Schedule, promote, and host 1 online workshop Final project and outcomes reporting Ongoing operations of cooperative egg washing and distribution

3. Describe its quality assurance and evaluation plans for the request. Specify how the applicant plans to monitor, evaluate, and improve their results; and

Program manager and administration team will have monthly meetings at a minimum to ensure that the project is on track to meet its timeline, activities, and outcomes/objectives. Data tracking is done via Google Drive for shared collaboration, and will include files for workshop attendance, program participation, budget management and financial tracking, and more. All financial records are also held within Quickbooks in a separate job tracker for quality recordkeeping. Some of the key targets will be tracked in the following ways:

Target	Tracking Mechanism	Final Output Evidence
6 workshops delivered	Workshop hosting records; final videos release	6 recorded workshops available on YouTube
30+ egg producers educated	Workshop attendance records	Total list of all workshop attendees
7 to 15 Kaua'i egg producers supported	Participant records; ongoing farm visits	7 to 15 Kaua'i egg producers are maintaining flocks of 100-200+ birds
Increased egg supply made available to Kaua'i community	Egg sales data tracking via Google Sheets and Local Food Marketplace (MK's food hub software)	summary egg sales data and year-over-year comparisons
Continuance of MK's cooperative egg washing and distribution program	Weekly egg washing and distribution records via Google Sheets and Local Food Marketplace (MK's food hub software)	summary egg purchasing and sales data

4. List the measure(s) of effectiveness that will be reported to the State agency through which grant funds are appropriated (the expending agency). The measure(s) will provide a standard and objective way for the State to assess the program's achievement or accomplishment. Please note that if the level of appropriation differs from the amount included in this application that the measure(s) of effectiveness will need to be updated and transmitted to the expending agency.

Measurements of success for this project, include reaching the following targets:

1. delivery of 6 advanced poultry egg production workshops, promoted and available statewide; also recorded and added to YouTube channel for an ongoing resource
2. a minimum of 30 egg producers statewide will increase their knowledge of poultry egg production through a series of online workshops focused on topics such as flock management, incubation and hatching for sustainable flock expansion, etc.

- 3. 7 to 15 Kaua'i egg producers will increase the size of their flock to become more sustainable operations
- 4. an increased local egg supply is made available to the Kaua'i community, especially to those using SNAP/EBT and WIC
- 5. to continue to scale MK's cooperative egg washing program to ensure that locally produced eggs can be safely and compliantly washed and brought to larger commercial markets

IV. Financial

Budget

- 1. The applicant shall submit a budget utilizing the enclosed budget forms as applicable, to detail the cost of the request.
 - a. Budget request by source of funds ([Link](#))
 - b. Personnel salaries and wages ([Link](#))
 - c. Equipment and motor vehicles ([Link](#))
 - d. Capital project details ([Link](#))
 - e. Government contracts, grants, and grants in aid ([Link](#))

- 2. The applicant shall provide its anticipated quarterly funding requests for the fiscal year 2025.

Quarter 1	Quarter 2	Quarter 3	Quarter 4	Total Grant
\$29,207.50	\$28,207.50	\$20,207.50	\$19,207.50	\$96,830

- 3. The applicant shall provide a listing of all other sources of funding that they are seeking for fiscal year 2025.

We have not currently been able to identify any funding sources where this program would be eligible and meet funder interests, hence why State funding is so needed. Funding to support agricultural producers directly is very limited. We will continue to seek opportunities that may be a match.

- 4. The applicant shall provide a listing of all state and federal tax credits it has been granted within the prior three years. Additionally, the applicant shall provide a listing of all state and federal tax credits they have applied for or anticipate applying for pertaining to any capital project, if applicable.

We anticipate applying for the ITC Direct Pay Federal tax credit for the solar installation on our recently completed Moloa'a 'ĀINA Center food hub buildout.

- 5. The applicant shall provide a listing of all federal, state, and county government contracts, grants, and grants in aid it has been granted within the prior three years and will be receiving for fiscal year 2025 for program funding.

Please see section "GOVERNMENT CONTRACTS, GRANTS, AND / OR GRANTS IN AID" for a detailed listing.

6. The applicant shall provide the balance of its unrestricted current assets as of December 31, 2023.

\$2,535,789.38 cash basis; includes all facilities and equipment

V. Experience and Capability

1. Necessary Skills and Experience

The applicant shall demonstrate that it has the necessary skills, abilities, knowledge of, and experience relating to the request. State your experience and appropriateness for providing the service proposed in this application. The applicant shall also provide a listing of verifiable experience of related projects or contracts for the most recent three years that are pertinent to the request.

MK has been supporting increased local food production, including producer support program, since 2006 - over 18 years. The community-based nonprofit has distributed over \$650,000 in grants to Kaua'i farmers in just the last five years, and regularly provides producers with resources for grant writing support, fiscal sponsorship for small farming groups, informative newsletters, workshops and webinars, and more.

MK started the Poultry Egg Education Project (PEEP) program in 2021 with financial support from the USDA Beginning Farmer Rancher Development Program and the Native American Agriculture Foundation. This project helped to educate and startup 22 small egg producers on Kaua'i - 73% of which were Native Hawaiian owned and 95% minority-owned businesses.

During this time MK was also able to develop a cooperative style egg washing process that helped to bring producers' eggs to market in a food safe and legally compliant manner, with appropriate washing and storage facilities. This helped to support an additional 5 local egg producers, outside of the original PEEP program, in selling their eggs into the program for compliant washing and distribution.

This new program will address several issues that the producers and MK are experiencing to bring the project closer to sustainability, including:

- **Exorbitant feed costs:** by scaling farms to larger flock sizes, better discounts can be received for feed purchasing, and temporary subsidies of chick feed during non-production periods will help producers scale to this level with support, de-risking the cost of their expansions
- **High labor costs for egg washing:** the cooperative washing and distribution program can break even on egg washing once it reaches the 300 dozen eggs per

week mark; this expansion program should help us to get halfway there or more

- **High labor costs for egg layer care:** the inclusion of automation technology and modernization techniques to help automate processes such as feeding, watering, egg collection, and lighting to reduce on-farm labor needed
- **Continued education needed:** producers are still in need of further education to more tightly manage their flocks and their profit margins; a new workshop series will focus on key skills that will assist in these areas, such as flock management, culling, advanced bird health, hatching and incubation, recordkeeping, and more

These learnings positioned the team to develop a PEEP Scaling program that will meet the growing needs of beginning chicken egg farmers to help bring them to the next level, and will provide them the strong foundation to support the producers moving forward.

2. Facilities

The applicant shall provide a description of its facilities and demonstrate its adequacy in relation to the request. If facilities are not presently available, describe plans to secure facilities.

MK just completed the construction of their Moloa'a ĀINA Center, a food hub for post-harvest processing, storage, and aggregation of local food products. This facility build included the purchase of a commercial-scale PowerScrub II egg washer, which can be used by a single operator with a washer, dryer, and candler - and the capacity to wash 3,000-3,500 eggs per hour. This facility, its equipment, and its walk-in cold storage capacity will allow MK to continue to scale its shared egg washing program to assist local egg producers in safely and compliantly getting their eggs to market.

VI. Personnel: Project Organization and Staffing

1. Proposed Staffing, Staff Qualifications, Supervision and Training

The applicant shall describe the proposed staffing pattern and proposed service capacity appropriate for the viability of the request. The applicant shall provide the qualifications and experience of personnel for the request and shall describe its ability to supervise, train and provide administrative direction relative to the request.

MK launched the first PEEP program to start chicken egg farms on Kaua'i in 2021, and the PEEP Expansion project will help to scale those efforts and bring them towards sustainability.

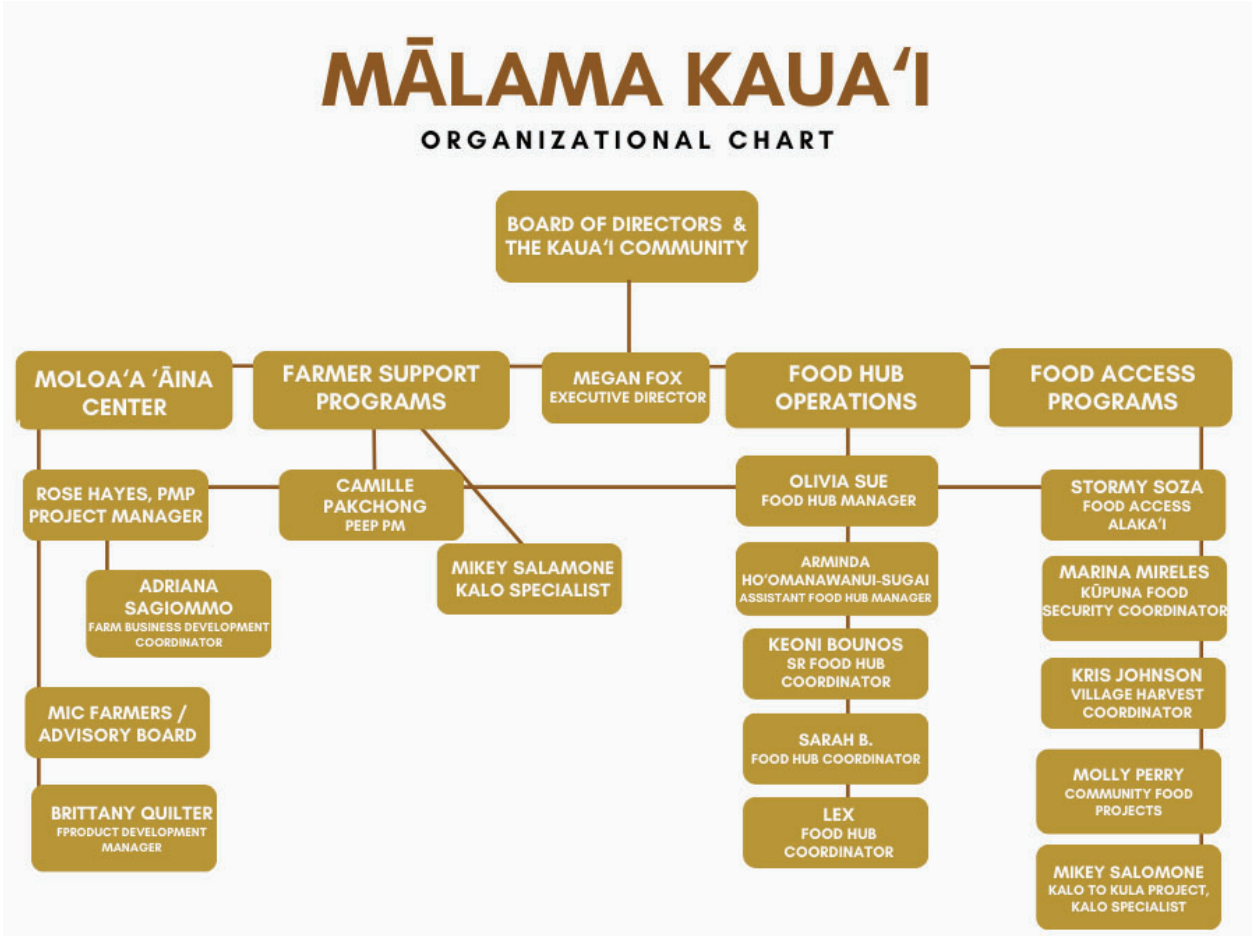
Program Manager Camille Pakchong has run the PEEP program since Summer 2023, taking over for the previous Program Manager who moved on to co-manage a very large chicken operation. Camille was in the first GoFarm graduate class on Kaua'i in 2017, is Vice-President for the Hawai'i Farmers Union United Kaua'i Chapter, and has

operated her small farm, Rainbow Roots, since 2018. She has an Associates in Office Management and certificates in Facility Engineering and ran a commercial maintenance and landscaping business for 13 years. Camille oversees all general program operations, including coordinating educational sessions, providing technical assistance and resource referrals to participants, and executing weekly egg aggregation, washing, and storage operations at half-time (20 hours per week).

Executive Director Megan Fox has been MK's Executive Director since 2017 and responsible for MK's programs since she joined the nonprofit in 2014. She holds a BS in Management and Public Policy and is a published author on creating job programs. She previously managed a 100-head chicken egg operation on MK's Kalihiwai Community Farm and has provided administrative oversight and grant management on the previous 3-year PEEP program. Megan is responsible for financial operations, grant management, and project compliance and oversight as the administrative support lead on the project.

2. Organization Chart

The applicant shall illustrate the position of each staff and line of responsibility/supervision. If the request is part of a large, multi-purpose organization, include an organization chart that illustrates the placement of this request.



3. Compensation

The applicant shall provide an annual salary range paid by the applicant to the three highest paid officers, directors, or employees of the organization by position title, not employee name.

Executive Director: \$88,814.59

Food Hub Manager: \$56,089.08

Food Access Director: \$55,705.20

VII. Other

1. Litigation

The applicant shall disclose any pending litigation to which they are a party, including the disclosure of any outstanding judgment. If applicable, please explain.

N/A

2. Licensure or Accreditation

The applicant shall specify any special qualifications, including but not limited to licensure or accreditation that the applicant possesses relevant to this request.

State DoA Dealers License

PCQI - Preventive Controls Qualified Individual, certified by AIB International

DoH Food Establishment Permit

Food Handlers Cards

3. Private Educational Institutions

The applicant shall specify whether the grant will be used to support or benefit a sectarian or non-sectarian private educational institution. Please see [Article X, Section 1, of the State Constitution](#) for the relevance of this question.

No it will not

4. Future Sustainability Plan

The applicant shall provide a plan for sustaining after fiscal year 2024-25 the activity funded by the grant if the grant of this application is:

- (a) Received by the applicant for fiscal year 2024-25, but
- (b) Not received by the applicant thereafter.

MK is developing its sustainability plan for both egg producers and its operations in coordinating washing and distribution of eggs. For egg producers, they will be most sustainable with a flock size of ~100+, and MK's washing and distribution operations will reach break even when selling 300 dozen eggs per week. This can be achieved within the next two years with continued funding to scale producers' production to meet these levels - the demand for eggs is already there as we have a waitlist for commercial

buyers and always sell out on retail. The State's GIA funding would get us halfway there as a gap funding opportunity, while we explore other funding opportunities for mechanisms for the following year's program.

**DECLARATION STATEMENT OF
APPLICANTS FOR GRANTS PURSUANT TO
CHAPTER 42F, HAWAI'I REVISED STATUTES**

The undersigned authorized representative of the applicant certifies the following:

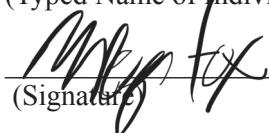
- 1) The applicant meets and will comply with all of the following standards for the award of grants pursuant to Section 42F-103, Hawai'i Revised Statutes:
 - a) Is licensed or accredited, in accordance with federal, state, or county statutes, rules, or ordinances, to conduct the activities or provide the services for which a grant is awarded;
 - b) Complies with all applicable federal and state laws prohibiting discrimination against any person on the basis of race, color, national origin, religion, creed, sex, age, sexual orientation, or disability;
 - c) Agrees not to use state funds for entertainment or lobbying activities; and
 - d) Allows the state agency to which funds for the grant were appropriated for expenditure, legislative committees and their staff, and the auditor full access to their records, reports, files, and other related documents and information for purposes of monitoring, measuring the effectiveness, and ensuring the proper expenditure of the grant.
- 2) If the applicant is an organization, the applicant meets the following requirements pursuant to Section 42F-103, Hawai'i Revised Statutes:
 - a) Is incorporated under the laws of the State; and
 - b) Has bylaws or policies that describe the manner in which the activities or services for which a grant is awarded shall be conducted or provided; and
- 3) If the applicant is a non-profit organization, it meets the following requirements pursuant to Section 42F-103, Hawai'i Revised Statutes:
 - a) Is determined and designated to be a non-profit organization by the Internal Revenue Service; and
 - b) Has a governing board whose members have no material conflict of interest and serve without compensation.
- 4) The use of grant-in-aid funding complies with all provisions of the Constitution of the State of Hawaii (for example, pursuant to Article X, section 1, of the Constitution, the State cannot provide "... public funds ... for the support or benefit of any sectarian or nonsectarian private educational institution...").

Pursuant to Section 42F-103, Hawai'i Revised Statutes, for grants used for the acquisition of land, when the organization discontinues the activities or services on the land acquired for which the grant was awarded and disposes of the land in fee simple or by lease, the organization shall negotiate with the expending agency for a lump sum or installment repayment to the State of the amount of the grant used for the acquisition of the land.

Further, the undersigned authorized representative certifies that this statement is true and correct to the best of the applicant's knowledge.

Megan Fox

(Typed Name of Individual or Organization)



(Signature)

1/16/2024

(Date)

Megan Fox

(Typed Name)

Rev 8/30/23

Executive Director

(Title)

5Application for Grants

BUDGET REQUEST BY SOURCE OF FUNDS

Period: July 1, 2024 to June 30, 2025

Applicant: Mālama Kaua'i

BUDGET CATEGORIES	Total State Funds Requested (a)	Total Federal Funds Requested (b)	Total County Funds Requested (c)	Total Private/Other Funds Requested (d)
A. PERSONNEL COST				
1. Salaries	31,928			
2. Payroll Taxes & Assessments				
3. Fringe Benefits	6,624			
TOTAL PERSONNEL COST	38,552			
B. OTHER CURRENT EXPENSES				
1. Airfare, Inter-Island				
2. Insurance				
3. Lease/Rental of Equipment				
4. Lease/Rental of Space				
5. Staff Training				
6. Supplies	50,750			
7. Telecommunication				
8. Utilities				
9. Administrative (10% request, 5% match)	8,990			4,495
10. Guest Speaker Stipends	600			
11				
12				
13				
14				
15				
16				
17				
18				
19				
20				
TOTAL OTHER CURRENT EXPENSES	60,340			4,495
C. EQUIPMENT PURCHASES				
D. MOTOR VEHICLE PURCHASES				
E. CAPITAL				
TOTAL (A+B+C+D+E)	98,892			4,495
SOURCES OF FUNDING		Budget Prepared By:		
(a) Total State Funds Requested	98,892	Megan Fox 808-828-0685		
(b) Total Federal Funds Requested		Name (Please type or print) Phone		
(c) Total County Funds Requested		1/16/24		
(d) Total Private/Other Funds Requested	4,495	Signature of Authorized Official Date		
TOTAL BUDGET	103,387	Megan Fox, Executive Director Name and Title (Please type or print)		

BUDGET JUSTIFICATION - PERSONNEL SALARIES AND WAGES Period: July 1, 2024 to June 30, 2025

Applicant: Mālama Kaua'i

POSITION TITLE	FULL TIME EQUIVALENT	ANNUAL SALARY A	% OF TIME ALLOCATED TO GRANT REQUEST B	TOTAL STATE FUNDS REQUESTED (A x B)
PEEP Program Manager	0.50 FTE	\$31,928.00	100%	\$ 31,928.00
				\$ -
				\$ -
TOTAL:				\$ 31,928.00
JUSTIFICATION/COMMENTS:				

BUDGET JUSTIFICATION - EQUIPMENT AND MOTOR VEHICLES

Period: July 1, 2024 to June 30, 2025

Applicant: Mālama Kaua'i

DESCRIPTION EQUIPMENT	NO. OF ITEMS	COST PER ITEM	TOTAL COST	TOTAL BUDGETED
N/A			\$ -	
			\$ -	
TOTAL:				
JUSTIFICATION/COMMENTS: N/A				

DESCRIPTION OF MOTOR VEHICLE	NO. OF VEHICLES	COST PER VEHICLE	TOTAL COST	TOTAL BUDGETED
			\$ -	
			\$ -	
TOTAL:				
JUSTIFICATION/COMMENTS: N/A				

Applicant: Mālama Kaua'i

FUNDING AMOUNT REQUESTED						
TOTAL PROJECT COST	ALL SOURCES OF FUNDS RECEIVED IN PRIOR YEARS		STATE FUNDS REQUESTED	OTHER SOURCES OF FUNDS REQUESTED	FUNDING REQUIRED IN SUCCEEDING YEARS	
	FY: 2022-2023	FY: 2023-2024	FY:2024-2025	FY:2024-2025	FY:2025-2026	FY:2026-2027
PLANS						
LAND ACQUISITION						
DESIGN						
CONSTRUCTION						
EQUIPMENT						
TOTAL:	0	0	0	0	0	0
JUSTIFICATION/COMMENTS:						
This is only representative of the PEEP Program - N/A						

GOVERNMENT CONTRACTS, GRANTS, AND / OR GRANTS IN AID

Applicant: Mālama Kauaʻi

Contracts Total: 3,349,433

	CONTRACT DESCRIPTION	EFFECTIVE DATES	AGENCY	GOVERNMENT ENTITY (U.S./State/Hawaii/ Honolulu/ Kauai/ Maui County)	CONTRACT VALUE
1	Kaukau 4 Keiki Summer Food Service Program	06/01/2021 - 08/05/2021	USDA / Hawaii Child Nutrition Programs	US	309,587
2	Kauai Food Access Capacity Building Project	10/08/2020 - 09/30/2021	Department of Health	State	49,945
3	Kauaʻi Farm to ECE Project	07/20/2021 - 06/30/2022	USDA	US	95,212
4	Kauai Food Access Capacity Building Project	10/01/2021 - 09/30/2022	Department of Health	State	49,945
5	Moloaʻa ʻĀINA Center: Catalyzing Kauaʻi Ag	05/25/2021 - 12/25/2022	Department of Agriculture	State	250,000
6	GIA: Ag Internship Program	07/01/2019 - 12/31/2022	Department of Agriculture	State	45,000
7	WIC EBT Expansion to Farmers Markets	05/21/2021 - 12/31/2022	Department of Health	State	49,750
8	Kauaʻi Poultry Egg Education Project (PEEP)	09/01/2021 - 08/31/2024	USDA	US	226,947
9	2021 Farm to School	07/20/2021 - 9/30/2022	USDA	US	95,212
10	Payroll Protection Program	02/26/2021 - 5/26/2021	Small Business Administration	US	38,000
11	Kauai County Food Access Summit	08/01/2022 - 07/30/2023	Department of Health	State	26,000
12	Food Access Capacity Building Project for Kauai County	10/03/2022 - 09/30/2023	Department of Health	State	49,945
13	2022 State GIA: CIP for AINA Ctr	03/01/2022 - 02/29/2024	OCS	State	300,000
14	Kaukau 4 Keiki Summer Food Service Program	06/01/2022 - 08/05/2022	USDA / Hawaii Child Nutrition Programs	US	37,043
15	Rural Business Development Grant	06/30/2023 - 04/30/2024	USDA / Rural Business Development	US	50,000
16	Rural Development Community Facilities Program	08/30/2023 - 08/30/2026	USDA / Rural Business Development	US	492,000
17	Kaukau 4 Keiki Summer Food Service Program	06/01/2023 - 08/05/2023	USDA / Hawaii Child Nutrition Programs	US	214,561
18	FASLP: Kalo to Kula	09/01/2023 - 08/31/2025	USDA / NIFA	US	220,476
19	LFPP: Moloaʻa ʻĀINA Center	09/30/2023 - 09/29/2026	USDA / NIFA	US	749,809
20					