



## Application Submittal Checklist

*The following items are required for submittal of the grant application. Please verify and check off that the items have been included in the application packet.*

- 1) Hawaii Compliance Express Certificate (If the Applicant is an Organization)
- 2) Declaration Statement
- 3) Verify that grant shall be used for a public purpose
- 4) Background and Summary
- 5) Service Summary and Outcomes
- 6) Budget
  - a) Budget request by source of funds ([Link](#))
  - b) Personnel salaries and wages ([Link](#))
  - c) Equipment and motor vehicles ([Link](#))
  - d) Capital project details ([Link](#))
  - e) Government contracts, grants, and grants in aid ([Link](#))
- 7) Experience and Capability
- 8) Personnel: Project Organization and Staffing



Jennifer Gladwin

1.19.24

AUTHORIZED SIGNATURE

PRINT NAME AND TITLE

DATE



STATE OF HAWAII  
STATE PROCUREMENT OFFICE

**CERTIFICATE OF VENDOR COMPLIANCE**

This document presents the compliance status of the vendor identified below on the issue date with respect to certificates required from the Hawaii Department of Taxation (DOTAX), the Internal Revenue Service, the Hawaii Department of Labor and Industrial Relations (DLIR), and the Hawaii Department of Commerce and Consumer Affairs (DCCA).

**Vendor Name:** KELEA FOUNDATION

**Issue Date:** 01/19/2024

**Status:** **Compliant**

Hawaii Tax#:

New Hawaii Tax#:

FEIN/SSN#: XX-XXX8906

UI#: No record

DCCA FILE#: 236570

Status of Compliance for this Vendor on issue date:

| Form  | Department(s)                                     | Status    |
|-------|---|-----------|
| A-6   | Hawaii Department of Taxation                     | Compliant |
| 8821  | Internal Revenue Service                          | Compliant |
| COGS  | Hawaii Department of Commerce & Consumer Affairs  | Exempt    |
| LIR27 | Hawaii Department of Labor & Industrial Relations | Compliant |

**Status Legend:**

| Status        | Description   |
|---------------|---|
| Exempt        | The entity is exempt from this requirement  |
| Compliant     | The entity is compliant with this requirement or the entity is in agreement with agency and actively working towards compliance |
| Pending       | A status determination has not yet been made  |
| Submitted     | The entity has applied for the certificate but it is awaiting approval  |
| Not Compliant | The entity is not in compliance with the requirement and should contact the issuing agency for more information                 |

## Application for Grants

*If any item is not applicable to the request, the applicant should enter "not applicable".*

### **I. Certification – Please attach immediately after cover page**

#### **1. Hawaii Compliance Express Certificate (If the Applicant is an Organization)**

If the applicant is an organization, the applicant shall submit one (1) copy of a Hawaii Compliance Express Certificate from the Comptroller of the Department of Accounting and General Services that is dated no earlier than December 1, 2023.

**ATTACHED**

#### **2. Declaration Statement**

The applicant shall submit a declaration statement affirming its compliance with [Section 42F-103, Hawaii Revised Statutes](#).

**Kelea Foundation is in full compliance and agreement to the standard for award of grants statues set forth in section 42F-103**

#### **3. Public Purpose**

The applicant shall specify whether the grant will be used for a public purpose pursuant to [Section 42F-102, Hawaii Revised Statutes](#).

**The grant in aid funds will be used to benefit the residents of the County of Maui according to section 42F-102**

### **II. Background and Summary**

This section shall clearly and concisely summarize and highlight the contents of the request in such a way as to provide the State Legislature with a broad understanding of the request. Please include the following:

#### **1. A brief description of the applicant's background;**

Kelea Foundation began as a non-profit dedicated to making outdoor recreation accessible to all. We work with underserved populations such as young girls and women as well as those living with disabilities. As we progressed in our mission, we realized that in order to get people into the ocean, they had to be able to physically access the beach. Since 2018 our mission has expanded to advocate for accessibility in our community so that we can all access the outdoors.

Since the Maui Fires, Kelea Foundation has taken on the responsibility of advocating for fire survivors with disabilities and kupuna. Working with medical teams, we source, organize and distribute durable medical equipment to those who lost their mobility aids and other aids that support activities of daily living. To date, we have helped source equipment to over 250 families. The Kelea Foundation continues to advocate and provide plans to ensure congregate and non-congregate shelters are as accessible as possible. Our interventions have included the use of equipment such as ramps and shower chairs, as well as advocating for accessibility in places such as porta potties and the showering areas. We are currently supporting individuals and families, those who qualify for federal assistance and those who do not, as they navigate the disaster recovery system to source accessible accommodations. Additionally, Kelea Foundation helps to connect people to resources such as prescription replacement, eyeglass and hearing aid replacement, denture replacement, and vital records and services replacement.

The scope of our entire Inclusive Recovery Program includes an Inclusive Recovery Program director and advocacy specialist as well as the recreation specialist. This team will provide wrap around services to individuals with access and/or functional needs, including those with disabilities, kupuna and other at-risk populations. The program director provides macro level advocacy in every aspect of the rebuilding phase, particularly in built environment and policy decisions. The advocacy specialist provides individual level services, helping families and individuals access the resources they need and navigate the systems they must work within. The recreation specialist, which we are requesting funding for in this grant, will focus on the behavioral health and emotional and spiritual care of survivors. They will advocate for and support inclusion in community based support services, behavioral health and wellness resources. **Ultimately, Kelea Foundation is advocating for systemic improvements for individuals and families, especially those with disabilities and/or access and functional needs.**

## **2. The goals and objectives related to the request;**

Our goal at the Kelea Foundation is a completely inclusive recovery for all fire survivors. We are currently helping to meet access and functional needs of survivors but see a significant gap in the accessibility of community based support services, behavioral health and wellness resources. Kelea Foundation is seeking funding to hire a therapeutic recreation specialist to create inclusive and accessible therapeutic recreational services to fire survivors. Our goal is that no one is left behind in any aspect of this recovery, including the benefits of wellness and recreation services. These vital behavioral health opportunities must be accessible and inclusive to ensure that our most vulnerable do not get left even further behind.

Our goal is to create a consistent, reliable and healing calendar of recreational and wellness events that fire survivors with disabilities can count on and can feel completely included in. We will also work with those providing services and events to help make those existing services truly inclusive. We are also seeking funding to cover a portion of

the cost of an accessible van to help alleviate the stress of transportation for Maui's most vulnerable.

**Objective 1:**

To Obtain funding for the salary and benefits of one FTE inclusive Recovery Recreation Specialist for the 2025 fiscal year.

**Outcome 1:**

Coordination and implementation of at least 10 inclusive and accessible therapeutic recreational activities for survivors of the Maui Fires.

**Outcome 2:**

Coordination and implementation of at least 20 inclusive and accessible community based activities for survivors of the Maui Fires.

**Outcome 3:**

Enhanced advocacy for individuals with access and/or functional needs, including those with disabilities, kupuna and other at-risk populations.

**Objective 2:**

To obtain 29.17% of the funding (\$30,000) to purchase a 13 passenger accessible van

**Outcome 1:**

Accessible transportation provided to 50 Maui fire survivors, resulting in the restoration of dignity and independence

**Outcome 2:**

Increased participation in community based support services, behavioral health and wellness resources for individuals with access and/or functional needs, including those with disabilities, kupuna and other at-risk populations.

**3. The public purpose and need to be served;**

Since the Maui Fires, thousands of people have been experiencing high levels of trauma and stress on Maui. Many victims who are facing the greatest challenges are Kupuna and those living with disabilities. Kelea Foundation has been working with partners to find solutions to the immediate access and functional needs of this population, but behavioral and mental health support is vital. In this area of the recovery, people with disabilities and Kupuna have been utterly left behind. There are a plethora of wellness services designed for the general population, but literally nothing that is guaranteed accessible for those with mobility and communication differences. This population has been historically left behind, which we have seen being exacerbated through this recovery effort so far.

Behavioral health services are not just about talking with a psychologist. Behavioral health and wellness is about cultural connection, community connection, connection to Aina and place. Opportunities for access to the ocean and outdoors, to sports and to social gatherings is critical to the healing process for our survivors. It is important that we include both Kupuna and those living with disabilities in this part of our recovery. Many of the buildings destroyed in the fires were low income and kupuna housing. These smaller communities and neighborhoods were thriving places, where people connected and relied on each other. They kept people vital and strong because of those social connections made and maintained there. Now, those who lost that sense of place and community are experiencing significant cognitive declines and higher rates of mental health needs. Our goal is to help bridge the gap by creating new opportunities to bring together former communities in a safe and accessible place.

One of the biggest barriers for those living with disabilities who are currently being sheltered all over the island is reliable and easy to use transportation to appointments and other activities. Transportation services being provided by the American Red Cross and the County of Maui are not always accessible and can be confusing, limiting and frustrating to use because they are not designed for those living with disabilities. Some of these appointments are critical to physical health while others are critical to emotional health and wellbeing. We are seeing survivors of the fire, who have lost everything, significantly lose their independence both in sheltering situations and as a result of the lack of transportation options. This van will create more opportunities for those living with disabilities to integrate into our community at large and to be included in spaces that are not accessible due to this hardship. One specific example of the challenge of accessible transportation is with a board member of Kelea Foundation. She is quadriplegic and uses a power wheelchair. Because her wheelchair is heavy, she needs special transportation services to get to any event or meeting we hold. She must schedule at least 48 hours in advance and is often late to the event, picked up early or sometimes never makes it at all. She is also only able to visit one location per day. So, if she had a doctor's appointment in the morning and an event in the evening, she would have to choose. This van will help us eliminate barriers like this for those in our community. We will be able to simply pick up and drop off those in need according to our own schedule and with much more flexibility.

#### **4. Describe the target population to be served; and**

The target population for this request is individuals with access and/or functional needs, including those with disabilities, kupuna and other at-risk populations. In addition to these people, those who will also be impacted are the caretakers, family and children of those kupuna and disabled survivors. This group is under possibly the most stress of any cohort of survivors. Accessing resources is always difficult for those with disabilities. As we well know, the process to access basic resources for those without disabilities has been an immense trial for our community. Those who are caregivers and children of people living with disabilities are struggling all that much more to support their loved ones. Our programs will give an opportunity for caregivers and family members to participate as well. Building families back stronger and supporting caregivers to rest and be supported as well.

**5. Describe the geographic coverage.**

This program will impact Maui County, particularly the communities impacted by the fire. Now, many survivors are spread throughout the county and we will work to serve them where they are within the county.

**III. Service Summary and Outcomes**

The Service Summary shall include a detailed discussion of the applicant's approach to the request. The applicant shall clearly and concisely specify the results, outcomes, and measures of effectiveness from this request. The applicant shall:

**1. Describe the scope of work, tasks and responsibilities;**

Kelea Foundation has a basis in inclusive recreation and wellness programming. Since the Maui fires, we have been working intensively to ensure an inclusive recovery process for those living with disabilities, including Kupuna. As part of this work, we hope to also provide inclusive wellness and therapeutic recreation services to fire survivors. We are seeking funding to hire a recreation specialist to help us achieve this mission. The responsibilities of the recreation specialist will include:

- Creating and implementing a calendar of accessible and inclusive outdoor recreational activities with at least 10 beach or other outdoor activities.
- Create and implement a calendar of regular bi-weekly wellness activities at our headquarters in Kahului. This will include support groups, yoga and mindfulness workshops and exercise and movement classes and wellness services clinics that are inclusive of all regardless of mobility or communication type.
- Coordinating transportation for survivors to these activities through our 13 passenger accessible van, which we are requesting support funding for.
- Helping to ensure that other cultural and community activities for survivors are accessible and inclusive, collaborating with other organizations that are currently providing services and help to source solutions and remove barriers to access these services.
- Supporting programs through adaptive equipment management and development
- Developing and training a robust volunteer network to assist in recreational events. Training includes safety, risk management, equipment operation and trauma informed care basics.

We are requesting a portion of funding for a specialized accessible van that can accommodate up to 13 ambulatory riders and up to 3 wheelchair-using riders. Reliable transportation is one of the cornerstones of independent living. It is also a critical component to being included in community activities, meetings, and other social events. A significant barrier to participation in social gatherings or recreational opportunities is the lack of transportation. This project will help eliminate that barrier for many survivors. An accessible van will provide



opportunities for survivors living with disabilities and kupuna to do basic life skills such as running errands and getting to doctor appointments as well as help to transport them to social gatherings and events. Transportation to and from events will be coordinated with each survivor as needed. The recreational specialist and advocacy specialist will work together to provide this service to survivors.

Collaboration is the key to access and inclusion. The cornerstone of our work is collaborating with work already being done, helping those leading the way to create an inclusive environment by offering simple access solutions and training. We are also currently working with the Maui County Parks and Recreation department to create more inclusive programming for fire survivors on the west side and in other districts.

## **2. Provide a projected annual timeline for accomplishing the results or outcomes of the service;**

The funding request is for one year salary for the recreational specialist position as well as to cover 29.17% of the cost of an accessible van to help transport survivors to community activities. During the fiscal year, we will implement a monthly outdoor recreation program including ocean and beach days, adaptive snorkeling, kayaking or surfing or adaptive biking. We will also implement at least 1 indoor wellness activities per week during the duration of the grant funding, this may include support group meetings, adaptive exercise or yoga classes, community gatherings for cultural activities or other social gatherings to support survivors' unique needs. We anticipate that the accessible van will be operational within 6 months of funds being released from this request due to the vehicle built out and delivery time.

### **Projected Timeline**

#### **July- August 2024-**

- Staff recruitment and hiring
- Order vehicle

#### **September -December 2024-**

- Host 4 outdoor recreation opportunities
- Host 8 indoor community gatherings
- Analyze participant data and feedback and adjust as needed
- Van arrival anticipated December 2024

#### **January-June 2025**

- Host 6 outdoor recreation opportunities
- Host 12 indoor community gatherings
- Each month, analyze participant data and feedback and adjust as needed
- Support 50+ fire victims with transportation to events and/or appointments
- Gather data and reporting

3. **Describe its quality assurance and evaluation plans for the request. Specify how the applicant plans to monitor, evaluate, and improve their results; and**

Tracking participation in inclusive programs is the main method we will use to evaluate effectiveness of our programs. Each participant will register for programs with their name, contact and basic demographic information. Numbers will be tracked and each month, we will review and reevaluate methods of advertising events, types of events and other communities not being served and make adjustments as needed.

Community feedback is critical to building trust and participation in programs, particularly in the disability community. We will provide feedback opportunities at each event as well as through our website. This feedback will be reviewed each month and adjustments will be made as needed.

4. **List the measure(s) of effectiveness that will be reported to the State agency through which grant funds are appropriated (the expending agency). The measure(s) will provide a standard and objective way for the State to assess the program's achievement or accomplishment. Please note that if the level of appropriation differs from the amount included in this application that the measure(s) of effectiveness will need to be updated and transmitted to the expending agency.**

This program will be considered effective with:

- the coordination and implementation of at least 10 inclusive and accessible therapeutic recreational activities for survivors of the Maui Fires.
- The coordination and implementation of at least 20 inclusive and accessible community based activities for survivors of the Maui fires.
- Transportation services being utilized by 50 individuals through the accessible passenger van.

## **IV. Financial**

### **Budget**

1. The applicant shall submit a budget utilizing the enclosed budget forms as applicable, to detail the cost of the request.
  - a. Budget request by source of funds ([Link](#))
  - b. Personnel salaries and wages ([Link](#))
  - c. Equipment and motor vehicles ([Link](#))

- d. Capital project details ([Link](#))
- e. Government contracts, grants, and grants in aid ([Link](#))

**ATTACHED**

**2. The applicant shall provide its anticipated quarterly funding requests for the fiscal year 2025.**

Q1: \$53,720.00  
 Q2: \$18720.00  
 Q3: \$18720.00  
 Q4: \$18720.00  
 Total: \$109,880.00

| Quarter 1 | Quarter 2 | Quarter 3 | Quarter 4 | Total Grant |
|-----------|-----------|-----------|-----------|-------------|
| 53,720.00 | 18720.00  | 18720.00  | 18720.00  | 109,880.00  |

**3. The applicant shall provide a listing of all other sources of funding that they are seeking for fiscal year 2025.**

- Cooke Family Foundation
- Atherton Family Foundation
- Reeves Foundation
- Baldwin Family Foundation
- Maui Strong Fund

**4. The applicant shall provide a listing of all state and federal tax credits it has been granted within the prior three years. Additionally, the applicant shall provide a listing of all state and federal tax credits they have applied for or anticipate applying for pertaining to any capital project, if applicable.**

N/A

**5. The applicant shall provide a listing of all federal, state, and county government contracts, grants, and grants in aid it has been granted within the prior three years and will be receiving for fiscal year 2025 for program funding.**

N/A

**6. The applicant shall provide the balance of its unrestricted current assets as of December 31, 2023.**

\$44,455.00

**V. Experience and Capability**

## 1. Necessary Skills and Experience

**The applicant shall demonstrate that it has the necessary skills, abilities, knowledge of, and experience relating to the request. State your experience and appropriateness for providing the service proposed in this application. The applicant shall also provide a listing of verifiable experience of related projects or contracts for the most recent three years that are pertinent to the request.**

Prior to the August 8th wildfires on Maui, Kelea Foundation worked to advocate for accessibility and inclusion, specifically through recreation and sports. We have extensive experience in adaptive sports equipment and adapting environments to be more accessible for everyone. We help train staff of other organizations and government partners such as Maui Parks and Recreation Department. We coordinate competitive adaptive surfing through the Hawaiian Surfing Association and empower people through community based activities. We advocate for accessibility and inclusion through recreation and community involvement. Our Executive Director is a Lifeguard Instructor with the American Red Cross and we have been implementing therapeutic recreation programs since 2012.

Kelea Foundation has been working with those impacted by the recent wildfires to replace lost medical equipment and get much needed services reestablished or started. We are working alongside community partners, local government, state government, federal government and local non-profit partners to ensure that the Maui recovery is accessible and inclusive.

### Experience:

- August 8th - Present- Collect organize and distribute durable medical equipment to Maui Fire Survivors
  - Over 50 pallets of equipment have arrived and been sorted for distribution
  - Over 250 families have been served through these services to date
- August 8th- present- Advocating for the needs of Maui fire survivors with disabilities
  - We help to coordinate case management and public services for fire survivors with disabilities, ensuring that their access and functional needs and sheltering needs are met
  - Over 100 Individuals served to date
- August 8th- present- Collaborating with other organizations to help provide for their clients with disabilities. Collaborating organizations list includes but is not limited to:
  - Aloha Independent Living (Brian Hauser 808.866.4690)
  - Na HoAloha (Kathleen Kenny 808.707.7374)
  - Project Vision Hawaii (Darrah Kauhane 808.306.4406)
  - DOH (Dr. Anna Eckhart-Dodd 808.255.8627)
  - DOH Mental Health Division
  - Mauna Medics (Noe 808.269.9995)
  - American Red Cross Disaster Health Services (Katie Ahmand 651.315.4728)
  - American Red Cross Mass Care (Tyler Dahlgren [Tyler.dahlgren@redcross.org](mailto:Tyler.dahlgren@redcross.org))

- FEMA Voluntary Agency Liaison (Cece Woodley 202.705.9609)
  - FEMA Disability Integration Specialist (Roxanne Crawford [roxanne.crawford@fema.dhs.gov](mailto:roxanne.crawford@fema.dhs.gov))
  - Roots Reborn (Veronica Jachowinski 808.212.3402)
  - State Developmental Disabilities Council (Daintry Bartoldus [Daintry.Bartoldus@doh.hawaii.gov](mailto:Daintry.Bartoldus@doh.hawaii.gov))
  - Maui Rapid Response (Nicole 650.279.1662)
  - Maui County Parks & Recreation (Inclusion Specialist Richard Antone 808.270.1792)
  - Long Term Recovery Group (Hawaii Community Foundation Keoni Kuoha [KKuoha@hcf-hawaii.org](mailto:KKuoha@hcf-hawaii.org))
  - Department of Health - Kokua Lahaina Rising (Amy Petersen 808.419.5610)
  - Lahaina Comprehensive Behavioral Health Clinic (Kamaile Luke 808.658.5770)
- 
- Nov 2023- Hawaii Adaptive Surf Team World Parasurf Championships
    - Traveled to California with the Hawaii Adaptive Surf Team with 9 disabled athletes to compete in the World Championship of Adaptive Surf
  - 2023- HSA 2023 season 3 Adaptive Heats during contests.
    - Organized training days for 6 disabled surfers
    - Helped to coordinate adaptive heats in local surf competitions
  - Jun/Jul 2023- Girls In the Lineup Summer Camps
    - Various outdoor recreation programs for girls aged 8-13
    - Three, week long camps highlight outdoors sports, ocean safety and leadership
  - 2023- 15 Individual Outdoor Recreation experiences
    - Hosted 15 individuals in unique adaptive sports experiences including, hiking, surfing, snorkeling, kayaking and swimming
  - Dec 2022- Hawaii Adaptive Surf Team World Parasurf Championships
    - Traveled to California with the Hawaii Adaptive Surf Team with 9 disabled athletes to compete in the World Championship of Adaptive Surf
  - 2022- HSA 2022 season 3 Adaptive Heats during contests.
    - Organized training days for 6 disabled surfers
    - Helped to coordinate adaptive heats in local surf competitions
  - Jun/Jul 2022- Girls In the Lineup Summer Camps
    - Various outdoor recreation programs for girls aged 8-13
    - Week long camps highlight outdoors sports, ocean safety and leadership
  - 2023- 10 Individual Outdoor Recreation experiences
    - Hosted 10 individuals in unique adaptive sports experiences including, hiking, surfing, snorkeling, kayaking and swimming
  - Dec 2021- Full scale organizational training and program access planning for Wahine Project
  - 2019- Maui County Parks Accessibility & Inclusion training (50 participants)
    - Developed and implements one day training program to highlight adaptive recreation and accessibility issues in the community. This was a presentation and panel led discussion by people living with disabilities. Participants learned some

of the basic accessibility issues in sports and recreation and were able to ask questions to and interact with a live panel of people with various disabilities.

## **2. Facilities**

**The applicant shall provide a description of its facilities and demonstrate its adequacy in relation to the request. If facilities are not presently available, describe plans to secure facilities.**

In November of 2023, through grant funding and community support, Kelea Foundation opened its disability resource center at 111 Hana Hwy in Kahului, Maui. Through these facilities, we receive, sort and distribute durable medical equipment donations, host community meetings and other social workers assisting Maui fire survivors. This location is fully accessible and in an easy to access central location. There is ample parking and disabled parking stalls available. This space is being designed with inclusion in mind. Its purpose is to host inclusive community gatherings and services.

We are currently requesting funding from multiple sources to purchase an accessible van to help transport participants and those in need to these community gatherings as well as to vital service appointments. The van will be a 13 passenger van that can accommodate 13 ambulatory riders or three wheelchair using riders. We are able to configure these numbers in various ways as needed. The van has an electric ramp out the back. We will use private funding to cover additional costs of the van such as insurance, maintenance and other costs.

Kelea Foundation utilizes a donated storage space to hold its recreation equipment such as paddle boards, surf boards, kayaks, snorkel gear and handcycles. We currently use volunteer vehicles to transport equipment to event sites.

## **VI. Personnel: Project Organization and Staffing**

### **1. Proposed Staffing, Staff Qualifications, Supervision and Training**

**The applicant shall describe the proposed staffing pattern and proposed service capacity appropriate for the viability of the request. The applicant shall provide the qualifications and experience of personnel for the request and shall describe its ability to supervise, train and provide administrative direction relative to the request.**

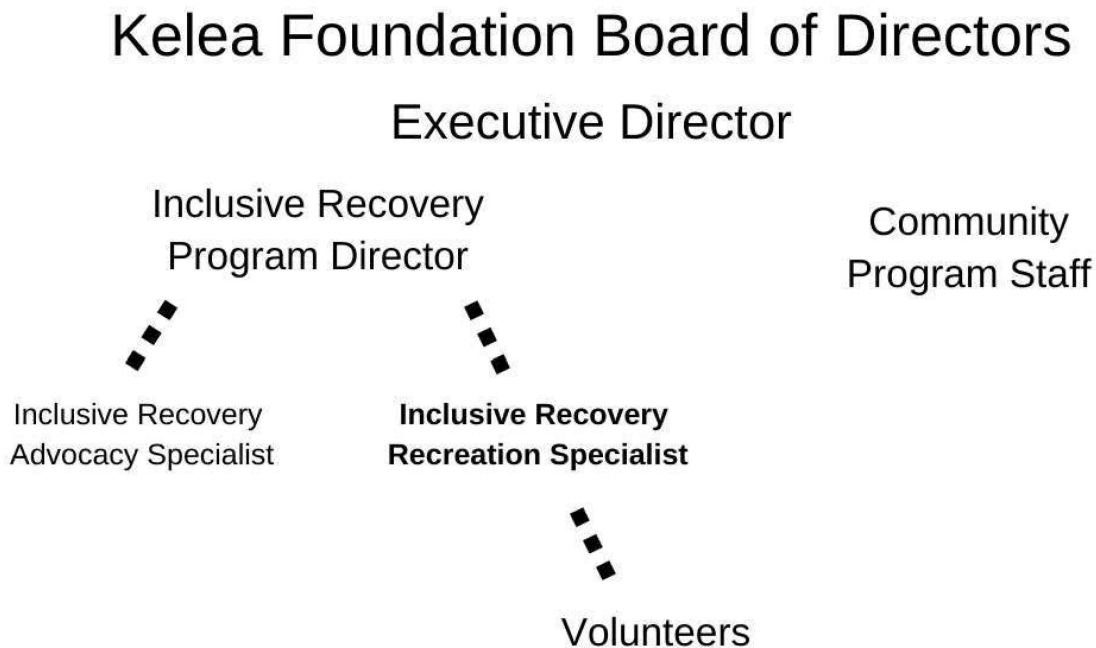
Under the direction of the Board of Directors, the Inclusive Recovery Program Director will oversee the Inclusive Recovery Advocacy Specialist and the Inclusive Recovery Recreation Specialist. Both specialists will work together to identify individuals in need of support and develop ways to provide this support. Additionally, the recreation

specialist will plan and implement a calendar of recreational and wellness events and network with other organizations who are providing recreational support. The recreation specialist will develop and utilize a network of volunteers to implement these events. In partnership with the Program director, the recreational specialist will provide training to these volunteers.

The program director is a Red Cross Lifeguard instructor and will work alongside the recreation specialist to ensure that volunteers have the appropriate certification and safety training for each type of event.

## 2. Organization Chart

**The applicant shall illustrate the position of each staff and line of responsibility/supervision. If the request is part of a large, multi-purpose organization, include an organization chart that illustrates the placement of this request.**



## 3. Compensation

**The applicant shall provide an annual salary range paid by the applicant to the three highest paid officers, directors, or employees of the organization by position title, not employee name.**

Executive Director- Volunteer

Inclusive Recovery Program Director- \$65,000-\$70,000

Inclusive Recovery Advocacy Specialist- \$52,000-\$54,000  
Inclusive Recovery Recreation Specialist- \$52,000-\$54,000

## **VII. Other**

### **1. Litigation**

**The applicant shall disclose any pending litigation to which they are a party, including the disclosure of any outstanding judgement. If applicable, please explain.**

N/A

### **2. Licensure or Accreditation**

**The applicant shall specify any special qualifications, including but not limited to licensure or accreditation that the applicant possesses relevant to this request.**

N/A

### **3. Private Educational Institutions**

**The applicant shall specify whether the grant will be used to support or benefit a sectarian or non-sectarian private educational institution. Please see [Article X, Section 1, of the State Constitution](#) for the relevance of this question.**

This grant will NOT be used to support or benefit a sectarian or nonsectarian private educational institute.

### **4. Future Sustainability Plan**

**The applicant shall provide a plan for sustaining after fiscal year 2024-25 the activity funded by the grant if the grant of this application is:**

We are continually seeking grant funding to expand and sustain our Fire Recovery programs. Funding comes from private individuals, foundations and government funding. We are continuing to build an online presence to solicit donations from additional private donors



**DECLARATION STATEMENT OF  
APPLICANTS FOR GRANTS PURSUANT TO  
CHAPTER 42F, HAWAI'I REVISED STATUTES**

The undersigned authorized representative of the applicant certifies the following:

- 1) The applicant meets and will comply with all of the following standards for the award of grants pursuant to Section 42F-103, Hawai'i Revised Statutes:
  - a) Is licensed or accredited, in accordance with federal, state, or county statutes, rules, or ordinances, to conduct the activities or provide the services for which a grant is awarded;
  - b) Complies with all applicable federal and state laws prohibiting discrimination against any person on the basis of race, color, national origin, religion, creed, sex, age, sexual orientation, or disability;
  - c) Agrees not to use state funds for entertainment or lobbying activities; and
  - d) Allows the state agency to which funds for the grant were appropriated for expenditure, legislative committees and their staff, and the auditor full access to their records, reports, files, and other related documents and information for purposes of monitoring, measuring the effectiveness, and ensuring the proper expenditure of the grant.
- 2) If the applicant is an organization, the applicant meets the following requirements pursuant to Section 42F-103, Hawai'i Revised Statutes:
  - a) Is incorporated under the laws of the State; and
  - b) Has bylaws or policies that describe the manner in which the activities or services for which a grant is awarded shall be conducted or provided; and
- 3) If the applicant is a non-profit organization, it meets the following requirements pursuant to Section 42F-103, Hawai'i Revised Statutes:
  - a) Is determined and designated to be a non-profit organization by the Internal Revenue Service; and
  - b) Has a governing board whose members have no material conflict of interest and serve without compensation.
- 4) The use of grant-in-aid funding complies with all provisions of the Constitution of the State of Hawaii (for example, pursuant to Article X, section 1, of the Constitution, the State cannot provide "... public funds ... for the support or benefit of any sectarian or nonsectarian private educational institution...").

Pursuant to Section 42F-103, Hawai'i Revised Statutes, for grants used for the acquisition of land, when the organization discontinues the activities or services on the land acquired for which the grant was awarded and disposes of the land in fee simple or by lease, the organization shall negotiate with the expending agency for a lump sum or installment repayment to the State of the amount of the grant used for the acquisition of the land.

Further, the undersigned authorized representative certifies that this statement is true and correct to the best of the applicant's knowledge.

**Kelea Foundation**

\_\_\_\_\_  
(Typed Name of Individual or Organization)

  
(Signature)

1.19.24

\_\_\_\_\_  
(Date)

**Jennifer Gladwin**

\_\_\_\_\_  
(Typed Name)

**Executive Director**

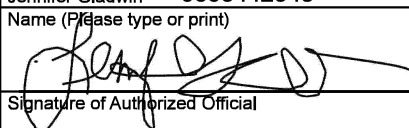
\_\_\_\_\_  
(Title)

# BUDGET REQUEST BY SOURCE OF FUNDS

Period: July 1, 2024 to June 30, 2025

App

Kelea Foundation

| BUDGET CATEGORIES                       | Total State<br>Funds Requested<br>(a) | Total Federal<br>Funds Requested<br>(b)   | Total County<br>Funds Requested<br>(c) | Total Private/Other<br>Funds Requested<br>(d) |
|---|---------------------------------------|---|--|---|
| <b>A. PERSONNEL COST</b>                |                                       |   |  |   |
| 1. Salaries                             | 52,416                                | 0   | 0                                      | 122,304                                       |
| 2. Payroll Taxes & Assessments          | 11,232                                | 0   | 0                                      | 26,208  |
| 3. Fringe Benefits                      | 11,232                                | 0   | 0                                      | 26,208  |
| <b>TOTAL PERSONNEL COST</b>             | <b>74,880</b>                         | <b>0</b>  | <b>0</b>                               | <b>174,720</b>                                |
| <b>B. OTHER CURRENT EXPENSES</b>        |                                       |   |  |   |
| 1. Airfare, Inter-Island                | 0                                     | 0   | 0                                      | 0   |
| 2. Insurance                            | 0                                     | 0   | 0                                      | 1,500   |
| 3. Lease/Rental of Equipment            | 0                                     | 0   | 0                                      | 0   |
| 4. Lease/Rental of Space                | 0                                     | 0   | 0                                      | 45,328  |
| 5. Staff Training                       | 0                                     | 0   | 0                                      | 0   |
| 6. Supplies                             | 0                                     | 0   | 0                                      | 500   |
| 7. Telecommunication                    | 0                                     | 0   | 0                                      | 500   |
| 8. Utilities                            | 0                                     | 0   | 0                                      | 1,500   |
| 9                                       |                                       |   |  |   |
| 10                                      |                                       |   |  |   |
| 11                                      |                                       |   |  |   |
| 12                                      |                                       |   |  |   |
| 13                                      |                                       |   |  |   |
| 14                                      |                                       |   |  |   |
| 15                                      |                                       |   |  |   |
| 16                                      |                                       |   |  |   |
| 17                                      |                                       |   |  |   |
| 18                                      |                                       |   |  |   |
| 19                                      |                                       |   |  |   |
| 20                                      |                                       |   |  |   |
| <b>TOTAL OTHER CURRENT EXPENSES</b>     |                                       |   |  | <b>49,328</b>                                 |
| <b>C. EQUIPMENT PURCHASES</b>           |                                       |   |  |   |
| <b>D. MOTOR VEHICLE PURCHASES</b>       | <b>35,000</b>                         |   |  | <b>85,000</b>                                 |
| <b>E. CAPITAL</b>                       |                                       |   |  |   |
| <b>TOTAL (A+B+C+D+E)</b>                | <b>109,880</b>                        |   |  | <b>309,048</b>                                |
| <b>SOURCES OF FUNDING</b>               |                                       | Budget Prepared By:   |  |   |
| (a) Total State Funds Requested         | 109,880                               | Jennifer Gladwin 8083442345   |  |   |
| (b) Total Federal Funds Requested       | 0                                     | Name (Please type or print) <span style="float: right;">Phone</span>  |  |   |
| (c) Total County Funds Requested        | 0                                     |  <span style="float: right;">1.19.24</span> |  |   |
| (d) Total Private/Other Funds Requested | 309,048                               | Signature of Authorized Official <span style="float: right;">Date</span>  |  |   |
| <b>TOTAL BUDGET</b>                     | <b>418,928</b>                        | Jennifer Gladwin, Executive Director  |  |   |
|   |                                       | Name and Title (Please type or print)   |  |   |







BUDGET JUSTIFICATION - EQUIPMENT AND MOTOR VEHICLES      Period: July 1, 2024 to June 30, 2025

Applicant: \_Kelea Foundation

| DESCRIPTION<br>EQUIPMENT | NO. OF<br>ITEMS | COST PER<br>ITEM | TOTAL<br>COST | TOTAL<br>BUDGETED |
|--------------------------|-----------------|------------------|---------------|-------------------|
| NA                       |                 |                  | \$ -          |                   |
|                          |                 |                  | \$ -          |                   |
|                          |                 |                  | \$ -          |                   |
|                          |                 |                  | \$ -          |                   |
|                          |                 |                  | \$ -          |                   |
| TOTAL:                   |                 |                  |               |                   |

JUSTIFICATION/COMMENTS:

| DESCRIPTION<br>OF MOTOR VEHICLE | NO. OF<br>VEHICLES | COST PER<br>VEHICLE | TOTAL<br>COST | TOTAL<br>BUDGETED |
|---------------------------------|--------------------|---------------------|---------------|-------------------|
| Wheelchair Accessible Van       | 1.00               | \$120,000.00        | \$ 120,000.00 | 35000             |
|                                 |                    |                     | \$ -          |                   |
|                                 |                    |                     | \$ -          |                   |
|                                 |                    |                     | \$ -          |                   |
|                                 |                    |                     | \$ -          |                   |
| TOTAL:                          | 1                  |                     | \$ 120,000.00 | 35,000            |

JUSTIFICATION/COMMENTS:

We are seeking funding to help cover a portion of the cost of an accessible van to transport fire survivors to inclusive community gatherings and important appointments

BUDGET JUSTIFICATION - CAPITAL PROJECT DETAILS Period: July 1, 2024 to June 30, 2025

Applicant: Kea Foundation Kele

| FUNDING AMOUNT REQUESTED   |  |               |                       |                                  |                                      |              |
|--|--|---------------|-----------------------|----------------------------------|--------------------------------------|--------------|
| TOTAL PROJECT COST   | ALL SOURCES OF FUNDS RECEIVED IN PRIOR YEARS |               | STATE FUNDS REQUESTED | OTHER SOURCES OF FUNDS REQUESTED | FUNDING REQUIRED IN SUCCEEDING YEARS |              |
|  | FY: 2022-2023                                | FY: 2023-2024 | FY:2024-2025          | FY:2024-2025                     | FY:2025-2026                         | FY:2026-2027 |
| PLANS  | NA   |               |                       |                                  |                                      |              |
| LAND ACQUISITION   | NA   |               |                       |                                  |                                      |              |
| DESIGN   | NA   |               |                       |                                  |                                      |              |
| CONSTRUCTION   | NA   |               |                       |                                  |                                      |              |
| EQUIPMENT  | 0  | 0             | 35000                 | 85000                            | 0                                    | 0            |
| <b>TOTAL:</b>  |  |               | <b>35,000</b>         |                                  |                                      |              |
| <b>JUSTIFICATION/COMMENTS:</b><br>Requesting funding for an accessible van to transport maui fire survivors with with access and/or functional needs, including those with disabilities, kupuna and other at-risk populations. |  |               |                       |                                  |                                      |              |

**GOVERNMENT CONTRACTS, GRANTS, AND / OR GRANTS IN AID**

App

Kelea Foundation

Contracts Total: -

|    | <b>CONTRACT DESCRIPTION</b> | <b>EFFECTIVE DATES</b> | <b>AGENCY</b> | <b>GOVERNMENT ENTITY<br/>(U.S./State/Hawaii/<br/>Honolulu/ Kauai/<br/>Maui County)</b> | <b>CONTRACT VALUE</b> |
|----|-----------------------------|------------------------|---------------|--|-----------------------|
| 1  | N/A                         |                        |               |  | -                     |
| 2  |                             |                        |               |  |                       |
| 3  |                             |                        |               |  |                       |
| 4  |                             |                        |               |  |                       |
| 5  |                             |                        |               |  |                       |
| 6  |                             |                        |               |  |                       |
| 7  |                             |                        |               |  |                       |
| 8  |                             |                        |               |  |                       |
| 9  |                             |                        |               |  |                       |
| 10 |                             |                        |               |  |                       |
| 11 |                             |                        |               |  |                       |
| 12 |                             |                        |               |  |                       |
| 13 |                             |                        |               |  |                       |
| 14 |                             |                        |               |  |                       |
| 15 |                             |                        |               |  |                       |
| 16 |                             |                        |               |  |                       |
| 17 |                             |                        |               |  |                       |
| 18 |                             |                        |               |  |                       |
| 19 |                             |                        |               |  |                       |
| 20 |                             |                        |               |  |                       |
| 21 |                             |                        |               |  |                       |
| 22 |                             |                        |               |  |                       |
| 23 |                             |                        |               |  |                       |
| 24 |                             |                        |               |  |                       |
| 25 |                             |                        |               |  |                       |
| 26 |                             |                        |               |  |                       |
| 27 |                             |                        |               |  |                       |
| 28 |                             |                        |               |  |                       |
| 29 |                             |                        |               |  |                       |
| 30 |                             |                        |               |  |                       |