



STATE Grant in Aid 2024 Application  
**TABLE OF CONTENTS**

I. Certifications

1. Certificate of Good Standing
2. Signed Declaration of Statement
3. Public Purpose
4. Signed Type of Grant Request
5. Signed Application Checklist

II. Background and Summary

III. Service Summary and Outcomes

IV. Financial

V. Experience and Capability

VI. Personnel: Project Organization and Staffing

1. Proposed Staffing, Staff Qualification, Supervision, and Training
2. Organizational Chart
3. Compensation

VII. Other

1. Litigation
2. Licensure or Accreditation
3. Private Education Institutions
4. Future Sustainability Plan

VIII. Attachments

1. Budget
2. Staff Qualification/ Resumes



STATE Grant in Aid 2024 Application

## **I. Certifications**

- 1. Certificate of Good Standing**
- 2. Signed Declaration of Statement**
- 3. Public Purpose**
- 4. Signed Type of Grant Request**
- 5. Signed Application Checklist**

## Application Submittal Checklist

*The following items are required for submittal of the grant application. Please verify and check off that the items have been included in the application packet.*

- X 1) Certificate of Good Standing (If the Applicant is an Organization)
- X 2) Declaration Statement
- X 3) Verify that grant shall be used for a public purpose
- X 4) Background and Summary
- X 5) Service Summary and Outcomes
- X 6) Budget
  - a) Budget request by source of funds (Attachment 1)
  - b) Personnel salaries and wages (Attachment 1)
  - c) Equipment and motor vehicles (Attachment 1)
  - d) Capital project details (Attachment 1)
  - e) Government contracts, grants, and grants in aid (Attachment 1)
- X 7) Experience and Capability
- X 8) Personnel: Project Organization and Staffing

*Cara Short*

CARA SHORT, EXECUTIVE DIRECTOR

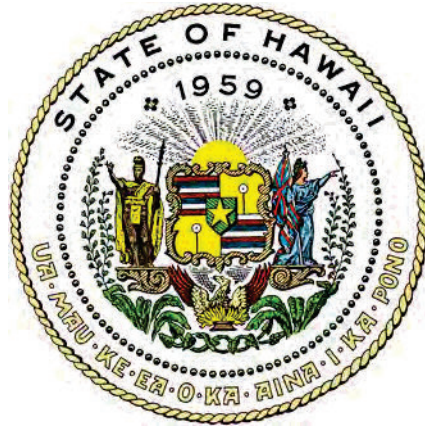
JANUARY 19,2024

AUTHORIZED SIGNATURE

PRINT NAME AND TITLE

DATE





## Department of Commerce and Consumer Affairs

### CERTIFICATE OF GOOD STANDING

I, the undersigned Director of Commerce and Consumer Affairs of the State of Hawaii, do hereby certify that

ACCESSURF HAWAII, INC.

was incorporated under the laws of Hawaii on 02/21/2006 ; that it is an existing nonprofit corporation; and that, as far as the records of this Department reveal, has complied with all of the provisions of the Hawaii Nonprofit Corporations Act, regulating domestic nonprofit corporations.



IN WITNESS WHEREOF, I have hereunto set my hand and affixed the seal of the Department of Commerce and Consumer Affairs, at Honolulu, Hawaii.

Dated: January 07, 2024

Director of Commerce and Consumer Affairs

**DECLARATION STATEMENT OF  
APPLICANTS FOR GRANTS PURSUANT TO  
CHAPTER 42F, HAWAI'I REVISED STATUTES**

The undersigned authorized representative of the applicant certifies the following:

- 1) The applicant meets and will comply with all of the following standards for the award of grants pursuant to Section 42F-103, Hawai'i Revised Statutes:
  - a) Is licensed or accredited, in accordance with federal, state, or county statutes, rules, or ordinances, to conduct the activities or provide the services for which a grant is awarded;
  - b) Complies with all applicable federal and state laws prohibiting discrimination against any person on the basis of race, color, national origin, religion, creed, sex, age, sexual orientation, or disability;
  - c) Agrees not to use state funds for entertainment or lobbying activities; and
  - d) Allows the state agency to which funds for the grant were appropriated for expenditure, legislative committees and their staff, and the auditor full access to their records, reports, files, and other related documents and information for purposes of monitoring, measuring the effectiveness, and ensuring the proper expenditure of the grant.
  
- 2) If the applicant is an organization, the applicant meets the following requirements pursuant to Section 42F-103, Hawai'i Revised Statutes:
  - a) Is incorporated under the laws of the State; and
  - b) Has bylaws or policies that describe the manner in which the activities or services for which a grant is awarded shall be conducted or provided.
  
- 3) If the applicant is a non-profit organization, it meets the following requirements pursuant to Section 42F-103, Hawai'i Revised Statutes:
  - a) Is determined and designated to be a non-profit organization by the Internal Revenue Service; and
  - b) Has a governing board whose members have no material conflict of interest and serve without compensation.

Pursuant to Section 42F-103, Hawai'i Revised Statutes, for grants used for the acquisition of land, when the organization discontinues the activities or services on the land acquired for which the grant was awarded and disposes of the land in fee simple or by lease, the organization shall negotiate with the expending agency for a lump sum or installment repayment to the State of the amount of the grant used for the acquisition of the land.

Further, the undersigned authorized representative certifies that this statement is true and correct to the best of the applicant's knowledge.

AccesSurf Hawaii \_\_\_\_\_  
(Typed Name of Individual or Organization)

*Cara Short*

\_\_\_\_\_  
(Signature)

January 18, 2024 \_\_\_\_\_  
(Date)

\_\_\_\_\_  
(Typed Name)

\_\_\_\_\_  
(Title)

Cara Short

Executive Director

**Public Purpose**  
**Pursuant to Section 42F-102 - Applications for grants**

(1) The name of the requesting organization: AccesSurf Hawaii (ASH)

(2) The public purpose for the grant:

The mission of AccesSurf Hawaii (ASH) is to build an inclusive community that empowers people with disabilities (PWD) through accessible, community-based beach and adaptive water programs. The programs are free of cost and available to anyone with any physical, mental, or cognitive disability of any age, gender, ethnic, or financial background. Activities enhance socialization, encourage health and fitness, and build confidence for participants and volunteers. This request supports the continuation of ASH's core programs and the expansion to Maui with a pilot program for PWD and individuals experiencing trauma around the fires and the ocean. For many PWD in Hawaii, the ASH programs are life changing.

The need for ASH programs is rooted in Hawaii's location and island culture. PWD are often afraid and physically unable to visit the beach or have never had the opportunity to swim. PWD are at a higher risk of drowning. They also face other discriminatory behaviors such as stigmatization, stereotyping, and targeting that pose barriers to their participation. PWD may themselves adopt negative beliefs about their disability and feel ashamed or embarrassed about it. These factors negatively affect both lifespan and quality of life. Furthermore, they carry a significant healthcare cost of approximately \$3 BILLION per year, or up to 31% of the state's healthcare spending, amounting to about \$17,721 per person with a disability. See below the CDC health impact chart for PWD vs. non-PWD.

(<https://www.cdc.gov/ncbddd/disabilityandhealth/impacts/hawaii.html>)

(3) The services to be supported by the grant:

ASH plans to present the following programs for people with disabilities with funding from this grant:

- Day at the Beach (DATB): This is a monthly event serving PWD of all ages at various beach sites across Oahu. 11 events per year wit adaptive swimming, surfing, education, and beach activities.
- Wounded Warrior Day at the Beach (WWDATB): This monthly event supports active-duty military and veterans with disabilities. 11 events per year wit adaptive swimming, surfing, education, and beach activities.
- Adaptive Swim clinic: This adaptive swim program is expanding through partnerships with the YMCA, the Rehab, and other organizations. 4 Clinics per year.
- Adaptive surf clinics: This program and Adaptive outrigger canoe are offered regularly throughout the year. 2 Clinics per year.
- Adaptive outrigger canoe clinics. 4 Clinics per year.
- Maui Day at the Beach Pilot Event: A new program in 2024 that ASH will lead in collaboration with Maui government and community organizations for people with disabilities and people experiencing trauma.
- Volunteer Training: ASH will recruit and train community volunteers throughout the year to support these programs. 10+ training sessions per year in addition to the regular on-site trainings with each core activity above.

**(4) The target group:**

ASH programs serve people with disabilities of all ages and hundreds of youth and adult community members who support our programs with passion and energy.

**(5) The cost of the grant and the budget:**

The overall budget for AccesSurf Hawaii in 2024 is \$756,187. ASH is requesting \$244,350 from the State of Hawaii for these programs.

HRS § 42F-102

Amended by L 2014, c 96, § 6, eff. 6/16/2014.

L 1997, c 190, pt of §3





STATE Grant in Aid 2024 Application

## II. Background and Summary

## **Application for Grants**

*If any item is not applicable to the request, the applicant should enter "not applicable".*

### **I. Certification** – Please attach immediately after cover page

#### **1. Hawaii Compliance Express Certificate (If the Applicant is an Organization)**

If the applicant is an organization, the applicant shall submit one (1) copy of a Hawaii Compliance Express Certificate from the Comptroller of the Department of Accounting and General Services that is dated no earlier than December 1, 2023.

See Hawaii Compliance Express Certificate attached.

#### **2. Declaration Statement**

The applicant shall submit a declaration statement affirming its compliance with [Section 42F-103, Hawaii Revised Statutes](#).

See Declaration Statement attached.

#### **3. Public Purpose**

The applicant shall specify whether the grant will be used for a public purpose pursuant to [Section 42F-102, Hawaii Revised Statutes](#).

See Public Purpose attached

## **II. Background and Summary**

This section shall clearly and concisely summarize and highlight the contents of the request in such a way as to provide the State Legislature with a broad understanding of the request. Please include the following:

### **1. A brief description of the applicant's background:**

The mission of AccesSurf Hawaii (ASH) is to build an inclusive community that empowers people with disabilities (PWD) through accessible, community-based beach and adaptive water programs. The programs are free of cost and available to anyone with any physical, mental, or cognitive disability of any age, gender, ethnic, or financial background. Activities enhance socialization, encourage health and fitness, and build confidence for participants and volunteers.

Founded in 2006, AccesSurf Hawaii (ASH) is a pioneer in the advancement of adaptive water sports, ocean and beach recreation, and healing experiences for people with disabilities (PWD). Since then, ASH has grown to provide over 3500 life-changing ocean experiences through more than forty (40) program days each year. ASH programs include adaptive surfing, swimming, canoe paddling and prone paddling; ASH was first to develop competitive adaptive surfing. In 2012, ASH hosted its first adaptive swim clinic on the Island of Maui. Programs rely heavily on a core of trained volunteers to provide the support and aloha needed to ensure PWD are given the best possible experiences and opportunities. For most ASH volunteers, the adaptive water programs are transformational learning and engagement activities.

ASH provides a unique service in Hawaii. With this request, ASH seeks funding to continue and expand our core adaptive water programs in FY24-25. The ASH core programs include: Day at the Beach (for all ages of PWD); Day at the Beach Wounded Warrior (for active duty military, veterans, and first responders); Adaptive Swim Clinic; Adaptive Surf Clinic; and Adaptive Outrigger Clinic. COVID-19 delayed ASH from launching Maui programs as we had planned to

do in late 2019. At the request of Maui County and other community partners, ASH plans to hire a Maui Program Coordinator and launch a pilot Day at the Beach program in 2024. Additionally, ASH will host community meetings and assess how best to build from the pilot in 2025.

## **2. The goals and objectives related to the request:**

### **Goals:**

- a. ASH aims to give people with disabilities in Hawaii rich and supportive opportunities to enjoy and feel safe at the beach, ocean, and in the water.
- b. ASH aims to provide adaptive water and beach activities that have a positive impact on mental and physical health for PWD and volunteers.
- c. ASH aims to expand our programs to serve PWD and people with fire-related trauma on the Island of Maui.

### **Objectives of ASH Request:**

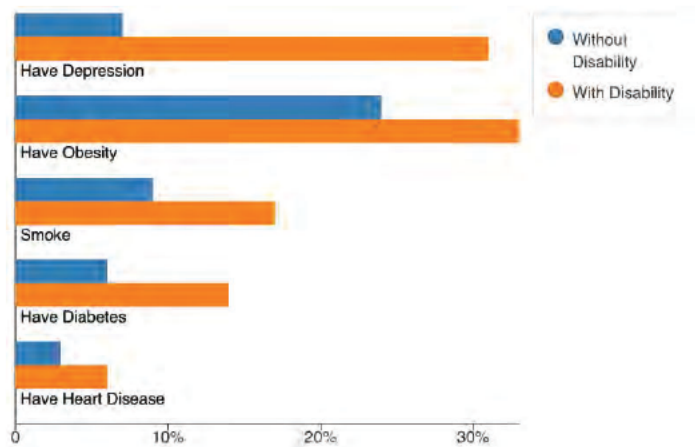
- a. To offer a total of 42 ASH core programs throughout the year that provide meaningful adaptive water and beach experiences for PWD and volunteer participants. Core programs include:
  - i. Day at the Beach (DATB) - 11 events per year
  - ii. Wounded Warrior Day at the Beach (WWDATB) - 11 events per year
  - iii. Adaptive Swim clinic - 4 events per year
  - iv. Adaptive Outrigger Canoe Clinic - 4 events per year
  - v. Adaptive Surf Clinic - 2 events per year
  - vi. Volunteer Training - 10+ stand alone events per year
- b. To expand ASH programming to the Island of Maui - total of 10 meetings/events  
In FY24-25,  
ASH plans to host a pilot DATB event. To prepare for that event, ASH staff will meet with County officials and other community stakeholders throughout the year to identify a location for DATB, secure permits, assess community needs, and recruit and train volunteers.

## **3. The public purpose and need to be served:**

This Grant-in-Aid request supports the continuation of ASH's core programs and the expansion to Maui with a pilot program for PWD and individuals experiencing trauma around the fires and the ocean. ASH core programs and the Maui pilot program will engage and support people with disabilities (PWD) by providing adaptive water and beach programs that benefit their mental and physical health. For many PWD in Hawaii, the ASH programs are life changing.

The need for ASH programs is rooted in Hawaii's location and island culture. PWD are often afraid and physically unable to visit the beach or have never had the opportunity to swim. PWD are at a higher risk of drowning. They also face other discriminatory behaviors such as stigmatization, stereotyping, and targeting that pose barriers to their participation. PWD may themselves adopt negative beliefs about their disability and feel ashamed or embarrassed about it. According to the Center for Disease Control (CDC), PWD in Hawaii are more likely than non-PWD to experience health disparities such as depression, diabetes, obesity, and heart disease. These factors negatively affect both lifespan and quality of life. Furthermore, they carry a significant healthcare cost of approximately \$3 BILLION per year, or up to 31% of the state's healthcare spending, amounting to about \$17,721 per person with a disability. See below the

CDC health impact chart for PWD vs. non-PWD.  
(<https://www.cdc.gov/ncbddd/disabilityandhealth/impacts/hawaii.html>)



ASH programs have become increasingly important over the last three years. PWD were at the highest risk of infection and dying from COVID-19 and many experienced severe trauma and isolation. More recently, the Maui fires intensified the fear and anxiety around the water for both PWD and non-PWD. ASH participant surveys indicate that people experience improved well-being at our core events. PWD relate that they feel empowered to surf on a wave, which then enlightens other areas of their lives. Over 500 post-event surveys that ASH collected between 2017 and 2020 relate that ocean-based programs give them a sense of safety, and support, and the experience of being part of the larger community.

#### 4. Describe the target population to be served:

There are two target populations served by ASH programs: PWD participants and program volunteers. The CDC reports that there are 258,555 adults in Hawaii who have a disability, a number equal to 22 percent of the population. Disabilities are defined as having difficulties in the following areas: vision, hearing, the ability to walk or climb stairs, cognition (remembering, concentrating, or making decisions), self-care (dressing or bathing), and independent living (doing errands alone such as visiting a doctor's office or shopping). In Hawaii, Native Hawaiians and Pacific Islanders have the highest disability rate among working-age adults, followed by Caucasian, Hispanics, and Asians. PWD are also more likely to have lower levels of education and higher rates of poverty.

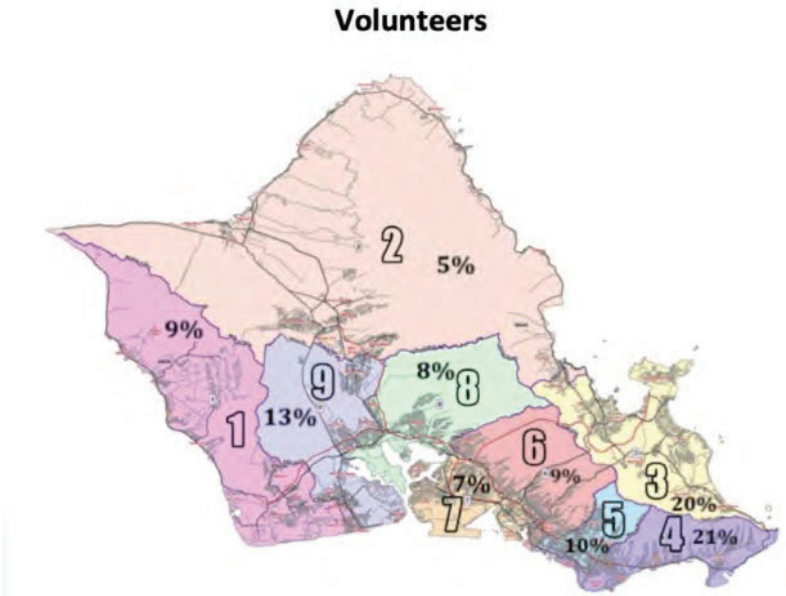
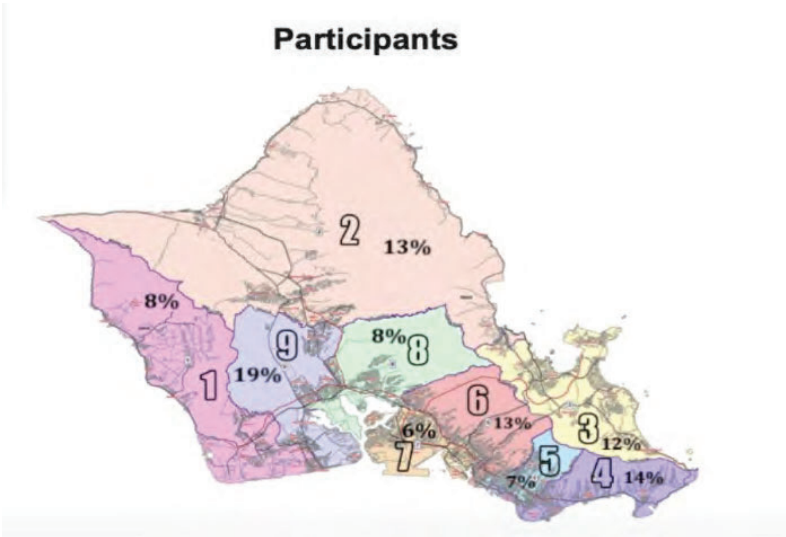
ASH's volunteers include past volunteers, current volunteers and newly recruited volunteers. Typically, most, if not all volunteers reside on the island of Oahu (see distribution map below). Through our recruitment process, we also try to identify those with expertise relevant to the skills and knowledge needed to effectively support our PWD in the water and/or provide training for different roles and adapt to any ability. These include surf instructors, physical therapists, health care providers, etc. For example, a qualified surf instructor already has the skills to clearly instruct anyone on how to surf. ASH has a staff member trained with occupational therapy training and we have physical therapists who regularly volunteer for our programs. The staff and volunteers will be trained to safely transport a PWD into the water and a volunteer health care provider can provide special assistance when needed for some PWD participants.

**5. Describe the geographic coverage:**

AccesSurf serves PWD and volunteers from across the Island of Oahu. For FY24-25, ASH will serve PWD participants and volunteers from every region of Oahu and on the Island of Maui. The focus of ASH's Maui pilot DATB program will be the Lahaina area but activities may occur in Kihei or Kaanapali depending on where we identify we are most needed by the community.

Participants in core ASH programs have come from across the Island of Oahu. The percentages were established by collecting participant zip codes at registration. A small percentage <10% of volunteers come from outer islands. In FY24-25, we will expand to the Island of Maui.

:





STATE Grant in Aid 2024 Application

### **III. Service Summary and Outcomes**

### **III. Service Summary and Outcomes**

The Service Summary shall include a detailed discussion of the applicant's approach to the request. The applicant shall clearly and concisely specify the results, outcomes, and measures of effectiveness from this request. The applicant shall:

#### **1. Describe the scope of work, tasks and responsibilities:**

ASH core programs are run 12 months a year, providing PWD with opportunities to participate in adaptive water and beach experiences on a regular basis. In FY24-25, the core programs will be held on Oahu and at least one pilot Day at the Beach program (DATB) will be piloted on Maui. The scope of work is as follows and for each of the activities, ASH aims for the Objectives listed above in Section 2.

#### **Scope of Work: Tasks: Responsibilities:**

##### **Core Program 1: Day at the Beach (DATB) [11 events per year]**

###### **Tasks:**

- a. Match PWD with appropriate volunteers and determine individual support needs.
- b. Provide assisted swimming and surfing activities.
- c. Provide Hawaiian cultural and place-based learning.
- d. Host talk story activities.
- e. Locations include Pokai Bay and Kalaeoa (White Plains). The August DATB is held at the Kualoa Regional Park, where ASH also offers paddle boarding.

**Responsibilities:** ASH staff and volunteers. Typically the ratio is 2-5 volunteers per PWD participant. Each DATB might serve 50-100 PWD participants.

##### **Core Program 2: Wounded Warrior Day at the Beach (WWDATB) [11 events per year]**

###### **Tasks:**

- a. Match PWD with appropriate volunteers and determine individual support needs.
- b. Provide assisted swimming and surfing activities.
- c. Provide Hawaiian cultural and place-based learning.
- d. Host talk story activities.
- e. Provide space for military programming.
- f. Locations include Pokai Bay and Kalaeoa (White Plains). The program is similar to DATB but focused on adults.

**Responsibilities:** ASH staff and an average of 40 volunteers per WWDATB event. There are typically 20 PWD participants. This program is expanding through partnerships with other organizations such as military groups, the YMCA, and the Rehab Hospital.

##### **Core Program 3: Adaptive Swim clinic [4 events per year]**

**Tasks:** This program is expanding through partnerships with the YMCA, the Rehab, and other organizations.

- a. Match PWD with appropriate volunteers and determine individual support needs.
- b. Provide assisted swimming lessons and opportunities.

**Responsibilities:** ASH staff and an average of 30 volunteers per swim clinic event. There are typically 20 PWD participants.

##### **Core Program 4: Adaptive surf clinic [2 events per year]**

###### **Tasks:**

- a. Participants surf independently or in tandem with volunteer surfers.

**Responsibilities:** ASH staff and an average of 20 volunteers per surf clinic event. There are typically 4-6 PWD participants.

**Core Program 5:** Adaptive outrigger canoe [4 events per year]

**Tasks:**

- a. Participants and volunteers paddle six-person or 12-person (double hull) outrigger canoes.
- b. PWD learn how to paddle together with others.

**Responsibilities:** ASH staff and an average of 60 volunteers per canoe program. There are typically 40 PWD participants.

**Core Program 6:** Volunteer Training [10+ training sessions additional to DATB and WWDATB]

This is a critical component of all ASH programs and activities. Volunteer training consists of two parts: an introduction and educational session and on-the-job experience.

**Tasks:**

- Check-in (pre-registration and sign in at event including data collection)
- Scheduling (pairing participants and volunteers for activities)
- Safely handle PWD to/from water and land
- Water safety
- Profiler- determining PWD function and support needs
- Water support with PWD
- Swim Specialist
- Surfers Instructors
- Equipment (we provide general and adaptive equipment that needs to be handed it, potentially fitted and collected after event)
- Collect data for quality improvement
- Set-up/tear down (transporting, unloading and setting up equipment area such as tent, accessibility mat etc.).
- In-depth specialized training events for core volunteers

**Responsibilities:** ASH staff will train volunteers and core volunteers, lead/ oversee peer training (core/lead volunteers run trainings for volunteers)

**New Program 1:** Maui Day at the Beach Pilot Event.

A new program in 2024 that ASH will lead in collaboration with Maui government and community organizations for people with disabilities and people experiencing trauma.

**Tasks:**

- a. Meetings with Maui County staff and with other community stakeholders.
- b. Identification of appropriate beach and ocean site.
- c. Recruitment of volunteers and identification of PWD and population we plan to serve.
- d. Hosting the event.
- e. Obtaining community feedback and follow up.
- f. Determination as to doing future events on Maui.

**Responsibilities:** ASH staff and approximately 30-60 volunteers per Maui DATB event. We anticipate 20-30 PWD participants for the pilot DATB; we will expand this following the pilot program for future programs on Maui.



**2. Provide a projected annual timeline for accomplishing the results or outcomes of the service:**

<b>Activity/Outcome</b>	<b>Timeline</b>
<b>Core Program 1:</b> <i>Day at the Beach (DATB)</i>	Monthly event (except for May)
<b>Core Program 2:</b> <i>Wounded Warrior Day at the Beach (WWDATB)</i>	Monthly event (except for May)
<b>Core Program 3:</b> <i>Adaptive Swim clinic</i>	Quarterly but may be more frequent as we train partner organizations to offer this.
<b>Core Program 4:</b> <i>Adaptive surf clinic</i>	2 annually
<b>Core Program 5:</b> <i>Adaptive outrigger canoe</i>	Quarterly
<b>Core Program 6:</b> Volunteer Training	3-4 Trainings per month
<b>New Program 1:</b> <i>Maui Day at the Beach Pilot Event</i>	Program will take place in Q3*

\*Note: Preparation for the pilot project has already begun. We plan to meet with the County and community organizations for several months leading up to the event and then afterwards to follow up and prepare for future programs on Maui.

**3. Describe its quality assurance and evaluation plans for the request. Specify how the applicant plans to monitor, evaluate, and improve their results:**

Our assurance and evaluation plans are embedded in all ASH programs. We evaluate and improve program satisfaction and quality through data-led analysis. ASH tracks participant numbers for every core program through pre-registration and day-of sign-ins. This information helps us understand how effective we are in our volunteer or participant recruitment.

Additionally, ASH conducts periodic surveys of participants. The survey responses help us continually improve our programs. In early 2020, ASH conducted a survey needs assessment with 150 respondents. At that time, we recognized the need to include Hawaiian cultural and spiritual components in our training activities. Through this project, we intend to reach this new standard by bringing in Native Hawaiian practitioners and offering a variety of cultural training to test out which ones fit the needs of PWD participants and volunteers.

**Evaluation:** Data collected through surveys and feedback will be evaluated by the Program Evaluator. This will be done quarterly. The evaluation process will be developed through this project and will be used to evaluate what kinds of cultural and spiritual components fit the needs of our volunteers and to develop improvement plans for reaching the new standard of including cultural and spiritual components within the ASH programs and our volunteer training program.

**Improvement:** Based on evaluation results, we will have meetings with staff and

volunteers to jointly discuss conclusions resulting from the analysis and finalize the cultural and spiritual components that will be included in our volunteer trainings moving forward. The same team will develop improvement plans based on the results of the analysis.

**4. List the measure(s) of effectiveness that will be reported to the State agency through which grant funds are appropriated (the expending agency). The measure(s) will provide a standard and objective way for the State to assess the program's achievement or accomplishment. Please note that if the level of appropriation differs from the amount included in this application that the measure(s) of effectiveness will need to be updated and transmitted to the expending agency.**

<b>Program Activities</b>	<b>Output Reported to State</b>	<b>Method of Tracking</b>
<b>Core Program 1:</b> <i>Day at the Beach (DATB)</i>	# of PWD participants (est. 50-100 per) # of volunteers (est. 100-150 per) # of program events (11)	Pre-event registration Check-in at event
<b>Core Program 2:</b> <i>Wounded Warrior Day at the Beach (WWDATB)</i>	# of PWD participants (est. 50-100 per) # of volunteers (est. 100-150 per) # of program events (11)	Pre-event registration Check-in at event
<b>Core Program 3:</b> <i>Adaptive Swim clinic</i>	# of PWD participants (est. 4-10) # of volunteers (est.10-20) # of program events (est. 4)	Pre-event registration Check-in at event
<b>Core Program 4:</b> <i>Adaptive surf clinic</i>	# of PWD participants (est.4-10) # of volunteers (est.10-20) # of program events (2)	Pre-event registration Check-in at event
<b>Core Program 5:</b> <i>Adaptive outrigger canoe</i>	# of PWD participants (est. 20-40) # of volunteers (est.40-60) # of program events (est. 4)	Pre-event registration Check-in at event
<b>Core Program 6:</b> Volunteer Training	# of PWD participants # of volunteers # of program events Est. #s variable	Pre-event registration Check-in at event
<b>New Program 1:</b> <i>Maui Day at the Beach Pilot Event</i>	# of PWD participants # of volunteers # preparatory meetings	Pre-event registration

		Check-in at event Staff tracking
--	--	-------------------------------------



STATE Grant in Aid 2024 Application

## IV. Financial

**IV. Financial**  
**Budget**

- 1. The applicant shall submit a budget utilizing the enclosed budget forms as applicable, to detail the cost of the request.**
  - a. Budget request by source of funds ([Link](#))
  - b. Personnel salaries and wages ([Link](#))
  - c. Equipment and motor vehicles ([Link](#))
  - d. Capital project details ([Link](#))
  - e. Government contracts, grants, and grants in aid ([Link](#))
1. The applicant shall provide its anticipated quarterly funding requests for the fiscal year 2025.

Quarter 1	Quarter 2	Quarter 3	Quarter 4	Total Grant
\$61,088	\$61,088	\$61,088	\$61,088	\$244,350

**2. The applicant shall provide a listing of all other sources of funding that they are seeking for fiscal year 2025.**

- City & County of Honolulu, Grant-in-Aid, \$200,000
- Atherton Family Foundation, \$19,000
- Hawai'i Tourism Authority, \$80,000 (for Adaptive surf competition not funded by this project)

**3. The applicant shall provide a listing of all state and federal tax credits it has been granted within the prior three years. Additionally, the applicant shall provide a listing of all state and federal tax credits they have applied for or anticipate applying for pertaining to any capital project, if applicable.**

- NA

**4. The applicant shall provide a listing of all federal, state, and county government contracts, grants, and grants in aid it has been granted within the prior three years and will be receiving for fiscal year 2025 for program funding.**

- Hawaii Grant-in-Aid, FY23-24 Grant Amount \$150,000 Grant Purpose: Volunteer recruitment and training.
- City & County of Honolulu, Grant-in-Aid FY24-25 Grant Amount: \$200,000 Grant Purpose: Support for PWD and Kupuna.
- City & County of Honolulu, Grant-in-Aid FY23-24 Grant Amount: \$200,000 Grant Purpose: To help PWD and older adults age actively and to build intergenerational relationships and to address the impact of isolation and trauma due to COVID-19 restrictions.
- City & County of Honolulu, Grant-in Aid FY21-22 CT DCS-00003 Grant Period: 10/09/2021-10/08/2022 Grant Amount: \$200,000 Grant Purpose: AccesSurf Program and Training Growth

**4. The applicant shall provide the balance of its unrestricted current assets as of December 31, 2023.**



STATE Grant in Aid 2024 Application

## **V. Experience and Capability**

## **V. Experience and Capability**

### **1. Necessary Skills and Experience**

**The applicant shall demonstrate that it has the necessary skills, abilities, knowledge of, and experience relating to the request. State your experience and appropriateness for providing the service proposed in this application. The applicant shall also provide a listing of verifiable experience of related projects or contracts for the most recent three years that are pertinent to the request.**

#### **a. Experience and Skills:**

Since our launch in 2006, ASH has had 17 years' experience pioneering the advancement of adaptive water sports, ocean and beach recreation, and healing experiences for PWD and trained thousands of volunteers to aid in these programs. The COVID-19 pandemic posed significant challenges for PWD and for ASH. Nevertheless, ASH has continued to grow, recognizing the high value of our programs for participants and volunteers and the significant need that PWD in Hawaii have for opportunities to engage in sports and socialization activities. ASH is governed by a dedicated 14-member Board of Directors of professional business and community leaders who oversee the organization's financial stability, governance, and program activities.

**ASH's past projects related to this request:** ASH has received funding from multiple sources, such as government entities, private donors, fundraising, and private foundations to create an inclusive community of PWD and people without disabilities. ASH's showed success through the Hawaii Grant-in-Aid, FY23-24 Grant focusing on volunteer recruitment and training; the City & County of Honolulu, Grants-in-Aid FY23-24 that have enabled ASH to help PWD and older adults age actively and to build intergenerational relationships and to address the impact of isolation and trauma due to COVID-19 restrictions.

**In 2023, ASH played a unique role in Hawaii's services and activities for PWD. The following reflect our accomplishments over the past twelve months:**

- Hosted 60 Aquatic and beach activities with average engagement of 60 PWD and 150 volunteers (some who are PWD) per event.
- Hosted 11 Wounded Warrior and Day at the Beach (DATB) events with accessible adaptive surfing, swimming and canoeing. Average of 20 Wounded Warrior participants and 30 volunteers per event.
- Presented 42 Volunteer Trainings for new and advanced participants and volunteers.
- Hosted monthly Adaptive Swim clinics with an average of 20 PWD and 30 volunteers per session.
- Hosted monthly Adaptive outrigger canoe with an average of 40 participants with disabilities and 60 volunteers per session.
- Re-engaged more than 89% of the volunteers who participated in ASH programs to participate in multiple programs throughout the year.

### **2. Facilities**

**The applicant shall provide a description of its facilities and demonstrate its adequacy in relation to the request. If facilities are not presently available, describe plans to secure facilities.**

**Facilities and vehicles:** ASH's office, including a parking stall, is located at 3615 Harding Ave (410), Honolulu. This is a central location with access to and from around the island for staff, volunteers and participants. The office facility is positioned close to several major bus lines providing maximum access for anybody needing or wanting to come to our office. The building, office and bathrooms are wheelchair accessible. It contains desks and computers for staff members and volunteers to run or perform project and training related tasks. The office also stores virtual training equipment and some limited essential in-person training materials and equipment that need to be accessible conveniently.

ASH possesses two equipment vehicles (vans) and a trailer that transport specialized program equipment to and from our PASHA storage unit at Barbers Point, to and from the office and other program sites. The first van is parked at the Barbers Point Coast Guard Base, and the second van is parked at the Program Administrator's house for safety purposes and access. Both vans will be used for this project, however, a third van is needed. We have limited access to our equipment storage on our partner's property. In order to deliver programs on a timely basis we need these vans to transport from the storage area to the program area and sometimes we have three programs running at the same time.

The ASH office is compliant with Federal and State building codes, providing a clean, safe and secure facility. Participant and volunteer information is stored in password protected computers to keep records confidential. All evaluation materials are de-identified by the Program Administrator and provided to Program Evaluator for analyses without any names. ASH employs a drug and smoke free workplace policy with staff, volunteers, and visitors. Training is accessible to those with hearing, speech, psychological, and other disabilities. ASH values are focused on inclusion for all people and as such our events do, so that staff, participants and volunteers of diverse backgrounds come together, feeling safe and respected.

**Training Sites (In person):** We have long standing partnerships that provide access to beaches and pools for our programs around the island. These sites will be available for project related events. When choosing program sites, we always assess the sites for safety and accessibility (parking, walkway, bathrooms, transfer chairs etc.) and conditions (such water); if the site is not accessible but safe and meets other aspects of the event needs, ASH will bring ASH own accessible mats and make the site accessible for anyone with assisted walking devices or wheelchairs. ASH also possesses transfer beach chairs for access to the water.

Training partners that provide program sites include: Honolulu Pearl Canoe Club (for paddle training), Na Kama Kai (for ocean safety training collaborations). To secure additional program venues, ASH works closely with Honolulu City and County Parks and Recreation Department, Morale, Welfare and Recreation (MWR) with the Joint Base Pearl Harbor Hickam. Examples of Beach Parks used for ASH programming are: White Plains, Kualoa Regional, Ala Moana, Pokai Bay, Ali'i, Oneula, Kuhio Beach Parks. Examples of pools used are: Kaneohe, Manoa Valley District Parks, Waikele Community Park.





STATE Grant in Aid 2024 Application

## **VI. Personnel: Project Organization and Staffing**

- 1. Proposed Staffing, Staff Qualification, Supervision, and Training**
- 2. Organizational Chart**
- 3. Compensation**

## **VI. Personnel: Project Organization and Staffing**

### **1. Proposed Staffing, Staff Qualifications, Supervision and Training**

**The applicant shall describe the proposed staffing pattern and proposed service capacity appropriate for the viability of the request. The applicant shall provide the qualifications and experience of personnel for the request and shall describe its ability to supervise, train and provide administrative direction relative to the request.**

#### **Qualified staff:**

ASH currently has six highly experienced staff members and two contractors; three are part time and three are full time; contractors are part time. The ASH Executive Director and the Training and Innovation Specialist have been advisors for organizations around the world providing accessibility, water sports programs and competitions for PWD and have assisted in developing a competitive athlete classification system. They hold multiple leadership and community awards, such as Pacific Business News' (PBN) Leadership Award 2019 (Cara), and the Hawaii Waterman Hall of Fame Title 2019 (Ann). ASH staff Cara Short and Simone Schmid co-authored and published a Pilot Program Evaluation in 2019: Physical Activity & People with Disabilities - A Qualitative Process and Outcome Pilot Evaluation of the Non-Profit Organization AccesSurf Hawaii. Schmid has published three additional studies in 2021 relating to Program Evaluation of AccesSurf Hawaii, an adaptive surf, swim and canoe program for people with disabilities.

#### **Current ASH Staff supported by Hawai'i Grant-in-Aid Funding:**

**Cara Short, Executive Director:** Short has been ED since 2014. Prior to this, from 2012-2014, she was the ASH Program Coordinator responsible for overseeing and executing all program operations and coordinating volunteers and equipment. She will oversee the implementation, tracking, and reporting of the Hawai'i GIA funding.

**Ann Yoshida, CRC, OTD, Training and Innovation Specialist:** Yoshida has been the Training specialist for ASH since 2017. She has a masters OTD in Occupational Therapy from Pacific; a masters in Rehabilitation Counseling from Utah State University; and a BS in Speech Pathology & Audiology from University of Hawaii. From 2011-2015, Yoshida was a Professor of Social Welfare/ Special Education/ Occupational Therapy at Far East University. She will oversee training curriculum and volunteer engagement for ASH.

**Angela Atkins, Operations Director (OD):** Atkins has been with ASH since 2022. From 2012 to 2022, she was a tenured Physical and Health Education Teacher and Coach, Niu Valley Middle School, Aina Haina, HI. She has a Hawai'i Physical Education K-12 / Hawai'i Health Education 7-12 teaching license. Atkins has a Master of Public Health: Social and Behavioral Health Sciences, University of Hawaii at Mānoa, and a Bachelor of Science in Movement and Sport Studies: Physical Education and Health Studies from Springfield College, Springfield, MA. She will oversee daily program activities and events.

**Simone Schmid, Grant Manager/ Evaluator:** Schmid started as an ASH volunteer in 2010 and transitioned to staff in 2019. She jointly evaluated ASH's impact on participants' benefits, ability to assess community need during COVID-19, and program sustainability, in collaboration with the University of Hawaii at Manoa. Simone holds a PhD in public health, has master's degrees in Physical Activity and Health, and Public Health. She will oversee program evaluation and grant reporting.

**Shaina Bachstein, Program Communications and Social Media Coordinator:** Bachstein started supporting ASH as a volunteer in 2016 and is now a part-time staff. She is a Flight Attendant for Hawaiian Airlines and 'Ohana by Hawaiian. Bachstein has a BA in Child and Adolescent Development and Psychology from Point Loma Nazarene University. She will do external communications, including social media, for ASH.

**Russell James Kim, Program Administrator:** Kim has been with ASH since 2016, starting as a Wounded Warrior Day at the Beach volunteer. He supports ASH IT and program needs and is a certified American Red Cross Basic LifeGuard/First Aid/ CPR with AED. From 2014 to 2018, he was the NCI Inc./Agile Defense Field Service Engineer at Hickham AFB. Kim has been an ASH Water Safety Key Leader/Member of Leadership Committee, a member of the Adaptive Surf Team Honolulu, Hawaii, and a Volunteer/Water Safety/Athlete Assistance. He will be in charge of IT and ASH internal organization.

**Justin Stanford, Equipment/Program Manager:** Stanford has been with ASH since 2018, first as a volunteer, and now as the pt manager of equipment and programs. From 2017-2020, he was a Lead Aircraft Production Manager, and now works part time in Human Resources for Clinical Labs of Hawaii. He has a Master of Business Administration, Human Resources Management from Columbia Southern University, and a Bachelor of Applied Arts in Psychology from Ashford University. Stanford will coordinate and ensure that ASH programs have appropriate and safe equipment suited to the activities and needs of participants being served.

**Additional Staff in FY24-25:** These are new staff that will be supported with funding from Hawai'i Grant-in-Aid.

**Program Coordinator for Maui:** This staff, who will live and work on Maui, will work with the ASH team to organize a pilot DATB event on Maui in the late summer. He/she will be our point person in coordinating with Maui County and Recreation and Parks; this role will also help ASH strengthen connections with nonprofit and healthcare organizations serving PWD on Maui.

**Program Coordinator:** This is a new position to coordinate all program logistics.

**Other ASH Teams that support our programs and activities:**

**Leadership Committee (LC):** The LC is trained by staff to evaluate and lead the development of our volunteers. The LC is dedicated to support and encourage our volunteers into the future.

**Outreach & Ambassador Committee:** Composed of educators, this committee develops curriculum and instructs individuals to represent ASH while engaged in outreach efforts. This support will be in place for continued recruitment.

**Key Leaders:** Most of our key leaders have been volunteering and training with our organization for more than 10 years.

**Trained Volunteer Community:** Are all program volunteers who have received training. Seasoned and well-maintained partnerships: ASH has many long standing and diverse partnerships and continually forges new partners where recruitment and training of volunteers will be supported past the grant period. Our long-term partnerships with business and community groups establish support and expertise to improve volunteer skills and bring more awareness of the needs of PWD. We have developed partnerships with corporations and

organizations that provide financial support and volunteer for our programs. Experts partner with ASH to share their knowledge and skills to develop our community capabilities.

**2. Organization Chart**

The applicant shall illustrate the position of each staff and line of responsibility/supervision. If the request is part of a large, multi-purpose organization, include an organization chart that illustrates the placement of this request.

See Organization Chart attached.

**3. Compensation**

The applicant shall provide an annual salary range paid by the applicant to the three highest paid officers, directors, or employees of the organization by position title, not employee name.

These are 2024 salaries.

Executive Director: \$95,914

Operations Director: \$85,919

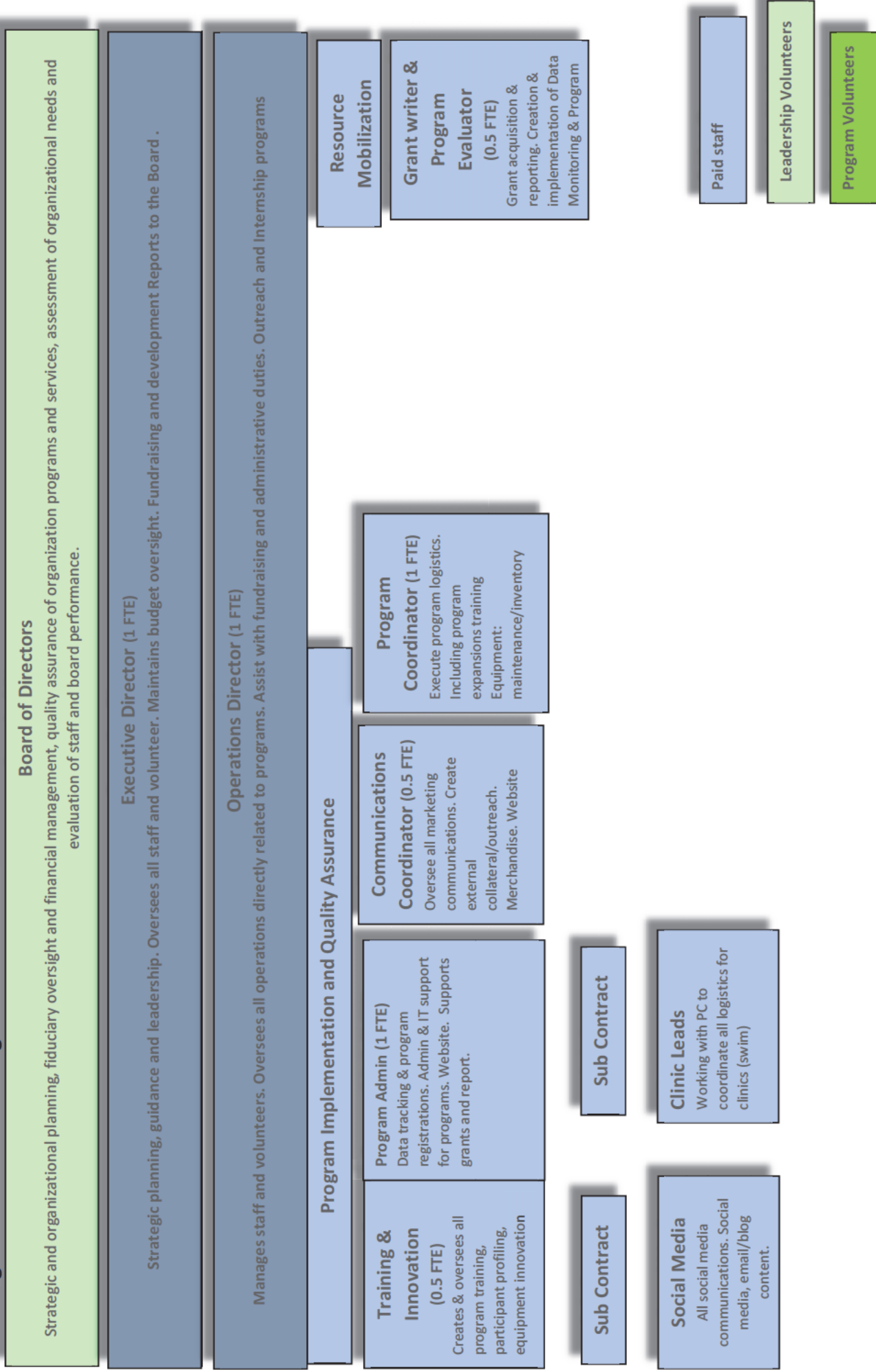
Program Administrator: \$56,461

### 3. Compensation

**The applicant shall provide an annual salary range paid by the applicant to the three highest paid officers, directors, or employees of the organization by position title, not employee name.**

Executive Director: \$75,000  
Program Evaluator: \$61,981  
Operations Director: \$43,680

# Organizational and Management Structure: AccessSurf



## Organizational and Management Structure: AccessSurf

### Leadership Committee (15)

Operational support for all programs/events.  
Program policy and procedure including program structure, training, equipment and safety

### Key Leaders for programs

Each of the clinic & programs areas have 7 Key Leaders with staff to oversee all logistics

### Clinic Coaches & Leads

*Help organize and implement clinic days. Coaches for participants, help with goal setting and evaluation. Support volunteer trainings. Leads oversee organization and implementation of clinic days (surf, swim, canoe)*

### Volunteer Community (400-900)

Representative of community members, with age, gender and ethnicities mix.

Volunteers undertake a variety of roles according to their preferences and particular strengths – surf and swim, check in, food, equipment, transfers, water safety, volunteer support, merchandise, recording, promoting, fundraising and event planning. [They receive at minimum a general Training and Tasks specific instruction.]  
*1 to 14 year commitment (continuous, sporadic, new)*



STATE Grant in Aid 2023 Application

## **VII. Other**

- 1. Litigation**
- 2. Licensure or Accreditation**
- 3. Private Education Institutions**
- 4. Future Sustainability Plan**



**VII. Other**

**1. Litigation**

**The applicant shall disclose any pending litigation to which they are a party, including the disclosure of any outstanding judgment. If applicable, please explain.**

Not Applicable

**2. Licensure or Accreditation**

**The applicant shall specify any special qualifications, including but not limited to licensure or accreditation that the applicant possesses relevant to this request.**

Not Applicable

**3. Private Educational Institutions**

**The applicant shall specify whether the grant will be used to support or benefit a sectarian or non-sectarian private educational institution. Please see [Article X, Section 1, of the State Constitution](#) for the relevance of this question.**

Not Applicable

**4. Future Sustainability Plan**

**The applicant shall provide a plan for sustaining after fiscal year 2024-25 the activity funded by the grant if the grant of this application is:**

- (a) Received by the applicant for fiscal year 2024-25, but**
- (b) Not received by the applicant thereafter.**

ASH has been able to effectively host programs for PWD and train volunteers for the past 17 years, including sustaining our activities during the COVID-19 pandemic. We have three viable revenue streams that support our operations. These streams include donations, fundraisers, and grants. During the COVID-19 pandemic, our two major funding streams (donations and fundraisers) decreased significantly, mainly because everyone was experiencing financial challenges. Grant funding, and especially government grants (Hawai'i Grant-in-Aid and City & County of Honolulu Grant-in-Aid) have been critical to ASH especially during the pandemic.

ASH is building capacity to seek more grant funding. Our intention in the coming year is to position our team to seek federal funding and ramp up our requests to private foundations and individual donors. The Hawai'i FY24-25 GIA funding will help ASH continue to grow following the pandemic, which will build financial resilience after the grant period ends.



STATE Grant in Aid 2024 Application

## **VIII. Attachments**

### **1. Budget**

- a) Budget request by source of funds
- b) Personnel salaries and wages
- c) Equipment and motor vehicles
- d) Capital project details
- e) Government contracts, grants, and grants in aid

### **2. Staff Qualification/ Resumes**

## BUDGET REQUEST BY SOURCE OF FUNDS

Period: July 1, 2024 to June 30, 2025

Applicant: AccesSurf Hawaii

BUDGET CATEGORIES	Total State Funds Requested (a)	Total Federal Funds Requested (b)	Total County Funds Requested (c)	Total Private/Other Funds Requested (d)
A. PERSONNEL COST				
1. Salaries	167,250	0	151,803	10,000
2. Payroll Taxes & Assessments	25,100	0		
3. Fringe Benefits	28,400	0	48,197	0
TOTAL PERSONNEL COST	<b>220,750</b>	<b>0</b>	<b>200,000</b>	<b>10,000</b>
B. OTHER CURRENT EXPENSES				
1. Airfare, Inter-Island	3,600			
2. Insurance				
3. Lease/Rental of Equipment				
4. Lease/Rental of Space				
5. Staff Training	0			
6. Supplies	5,000			9,000
7. Telecommunication	0			
8. Utilities				
9				
10				
11				
12				
13				
14				
15				
16				
17				
18				
19				
20				
TOTAL OTHER CURRENT EXPENSES	<b>8,600</b>			<b>9,000</b>
C. EQUIPMENT PURCHASES	15,000			
D. MOTOR VEHICLE PURCHASES	0			
E. CAPITAL	0			
<b>TOTAL (A+B+C+D+E)</b>	<b>244,350</b>		<b>200,000</b>	<b>19,000</b>
<b>SOURCES OF FUNDING</b>		Budget Prepared By:		
(a) Total State Funds Requested	244,350	Diane Evans <span style="float: right;">808-372-7333</span>		
(b) Total Federal Funds Requested	0	Name (Please type or print) <span style="float: right;">Phone</span>		
(c) Total County Funds Requested	200,000	<i>Cara Short</i>		
(d) Total Private/Other Funds Requested	19,000	Signature of Authorized Official <span style="float: right;">Date</span>		
		Cara Short, Executive Director		
<b>TOTAL BUDGET</b>	<b>463,350</b>	Name and Title (Please type or print)		

Applicant: AccesSurf Hawaii

POSITION TITLE	FULL TIME EQUIVALENT	ANNUAL SALARY A	% OF TIME ALLOCATED TO GRANT REQUEST B	TOTAL STATE FUNDS REQUESTED (A x B)
Executive Director	1 FTE	\$80,000.00	25.00%	\$ 20,000.00
Operations Director	1 FTE	\$72,000.00	50.00%	\$ 36,000.00
Program Coordinator Maui	0.5 FTE	\$20,000.00	100.00%	\$ 20,000.00
Program Administrator	1 FTE	\$56,000.00	50.00%	\$ 28,000.00
Trainer & Innovation Specialist	0.5 FTE	\$29,000.00	25.00%	\$ 7,250.00
Program Coordinator	1 FTE	\$56,000.00	100.00%	\$ 56,000.00
subtotal personnel				\$ 167,250.00
payroll taxes and assessments (calc @15%)				\$ 25,100.00
Fringe Benefits (calc at 17%)				\$ 28,400.00
<b>TOTAL:</b>				<b>220,750.00</b>

**JUSTIFICATION/COMMENTS:** Note: all positions support the launch of the Maui program in FY 24-25. Executive Director: Provides oversight for all staff, programs and operations. Partner relationships including program location partnerships. Operations Director supervises staff and volunteer management for all programs, outreach and internships. Program Coordinator Maui: A new position that will work closely with Oahu staff to plan the pilot DATB. He/she will be the on-site Maui coordinator for all program logistics. Program Administrator: provides support for all staff and programs and assists with program logistics, including registration, data tracking, website, and program evaluation. Trainer & Innovation Specialist: has a professional Occupational Therapy background and is an adaptive athlete. This role creates all training protocol and trains staff and key volunteers to

Applicant: AccesSurf Hawaii

DESCRIPTION EQUIPMENT	NO. OF ITEMS	COST PER ITEM	TOTAL COST	TOTAL BUDGETED
CRM Database	1.00	\$2,500.00	\$ 2,500.00	2500
Utility trailer	1.00	\$12,500.00	\$ 12,500.00	12500
Inter-Island travel (12 rt flights from Honolulu to Kahalui; 4x 1 day car rental)	multiple	varied	\$ 3,600.00	3600
Beach and adaptive surf equipment (chairs, tents, laptop for Program Coordinator)	multiple		\$ 5,000.00	5000
			\$ -	
TOTAL:	2		\$ 23,600.00	23,600

RT flights calculated at \$200/trip; Program equipment will support the creation of the pilot DATB event on Maui - we will need tents, tables, chairs, etc. to ensure people are comfortable. The new Maui staff needs a laptop and internet access.

DESCRIPTION OF MOTOR VEHICLE	NO. OF VEHICLES	COST PER VEHICLE	TOTAL COST	TOTAL BUDGETED
			\$ -	
			\$ -	
			\$ -	
			\$ -	
			\$ -	
TOTAL:				

JUSTIFICATION/COMMENTS:

Applicant: AccesSurfHawaii

FUNDING AMOUNT REQUESTED						
TOTAL PROJECT COST	ALL SOURCES OF FUNDS RECEIVED IN PRIOR YEARS		STATE FUNDS REQUESTED	OTHER SOURCES OF FUNDS REQUESTED	FUNDING REQUIRED IN SUCCEEDING YEARS	
	FY: 2020-2021	FY: 2021-2022			FY: 2022-2023	FY: 2023-2024
PLANS						
LAND ACQUISITION						
DESIGN						
CONSTRUCTION						
EQUIPMENT						
TOTAL:						
JUSTIFICATION/COMMENTS:						

**GOVERNMENT CONTRACTS, GRANTS, AND / OR GRANTS IN AID**

Applicant: AccessSurfHawaii

Contracts Total: -

	<b>CONTRACT DESCRIPTION</b>	<b>EFFECTIVE DATES</b>	<b>AGENCY</b>	<b>GOVERNMENT ENTITY</b> (U.S./State/Hawaii/ Honolulu/ Kauai/ Maui County.)	<b>CONTRACT VALUE</b>
1	Hawaii Grant in Aid FY23-24	8/1/2023-7/31/2024		Maui County.) State	\$149,500
2	City & County GIA FY23-24	10/1/2023-9/30/2024		County	\$200,000
3	City & County GIA FY24-25	10/1/2024-9/30/25		County	\$200,000
4					
5					
6					
7					
8					
9					
10					
11					
12					
13					
14					
15					
16					
17					
18					
19					
20					
21					
22					
23					
24					
25					
26					
27					
28					
29					
30					

# Cara Short

1992 St.Louis Dr  
Honolulu, HI 96816  
H: 808-748-1820  
cara@accessurf.org

## Skills

- Team leadership, training and development
- Business administration
- Quality control
- Documentation and reporting
- Program monitoring
- Budgeting and financial management
- Communications strategy
- Program management
- Public speaking
- Outreach programs

## Experience

- 2014 to present **AccessSurf Hawai'i** Honolulu, Hawaii  
**Executive Director**  
AccessSurf is a non-profit empowering people with disabilities through accessible beach and ocean sports programs and building an inclusive community.
- increased programs on O'ahu to host 50 program days annually
  - formalized adaptive surf team representing locally, nationally and internationally
  - expanded to include a sister organization in Okinawa
  - increased staff to 2 full time, 2 part-time plus a communication consultant
  - created an Executive level Board of Directors (15 members), Leadership Committee (13 members)
  - assisted with local City and County for permanent beach access mats
  - office and permanent equipment storage
  - increased revenue and budget by 8 times
  - increased annual international event to host over 80 adaptive athletes from 16 nation
  - developed community relationship with schools and other organizations to bring more awareness about inclusion
- 2012 to 2014 **AccessSurf Hawai'i** Honolulu, Hawaii  
**Program Coordinator**  
Oversee and execute all program operations (part time position)
- volunteer coordination
  - equipment and maintenance
  - coordination of all programs - pre, during and post event
- 2012 to 2014 **Aloha Provisions** Honolulu, Hawaii  
**Owner**  
Aloha Provisions was an online grocery delivery service for fresh quality groceries to vacation rentals and local residents on Oahu.



**Simone M. Schmid**

Post-doctoral Researcher | RCUH | University of Hawai'i at Mānoa  
 sschmid@hawaii.edu | 808-219-9409

**EDUCATION**

- 
- 2016 - 2021 **Ph.D., Public Health**  
*University of Hawai'i at Mānoa, USA*  
Dissertation in collaboration with AccesSurf Hawai'i: Program evaluation of an adaptive surf, swim and canoe program for people with disabilities
- 2014 - 2016 **M.A., Physical Activity and Health**  
*Friedrich-Alexander University Nuremberg-Erlangen, Germany*  
Thesis in collaboration with AccesSurf Hawai'i: Physical activity promotion among individuals with disabilities - Outcome evaluation through a focus group
- 2013 - 2014 **M.Sc., Public Health**, Specialization in Health Promotion  
*London School of Hygiene and Tropical Medicine (LSHTM), UK*  
Thesis in collaboration with the World Health Organization (WHO): Analysis of the relationship between national policies and physical activity within the WHO European Region
- 2008 - 2012 **B.Sc., Health Economics / Health Care Management**  
*University of Bayreuth, Germany*  
Thesis: The role of migration as an influencing factor on children's and youth's health - An analysis of the status quo and possible approaches to action
- 2010 - 2011 **Study Abroad**: Nursing, Health Promotion and Alternative Medicine  
*Hawai'i Pacific University and University of Hawai'i, USA*

**PUBLIC HEALTH WORK EXPERIENCE**

- 
- 2022 - **Post-doctoral Researcher, Research Corporation of the University of Hawai'i, USA**  
Bridge position between the Department of Health, Chronic Disease Prevention and Health Promotion Division, Surveillance, Evaluation and Epidemiology Office, and the University of Hawai'i, Office of Public Health Studies
- Coverdell Grant Implementation Brief and Evaluation of Stroke Symposium
  - Culturally-based physical activity in Hawai'i: data analysis, visualization and presentation
  - Working with MedQUEST on 1115 Waiver for Native Hawaiian Healing Practices including cultural relevant physical activity
  - Recruitment and supervising assistant staff
  - Development of educational trifold for legislators on sugary sweetened beverages fees
  - Grant application and implementation Ola HAWAII: principal investigator: Metabolic equivalent determination for outrigger canoeing for health equity (*pending*)
  - Preparing and presenting research findings at conferences via poster and presentations
- 2015 - **Program Evaluator and Grant Writer (Principal Investigator), AccesSurf Hawai'i, USA**  
 Adaptive programs for people with mental, physical, emotional, and developmental disabilities
- Analysis of current funding situation and possibilities
  - Grant applications: 43 approved grants out of 52 applications (>\$1.3 million)
  - Essential part of increasing annual program budget from \$50K to \$750K
  - Developed and implemented: Monitoring and Evaluation
  - Support for programmatic and strategic planning and upscaling
- 2019 - 2021 **Self-Directed Care Employee, United Health Care, Hawai'i, USA**
- Trained as home health nurse substitute for care of patient with tracheostomy, ventilator, oxidant, wound vacuum, and pulse oximeter
  - Managed 24/7 intensive home care for high need infant patient including staffing and equipment
  - Selected, trained, and supervised a total of 32 nurses
  - Scheduling and attending daily to weekly medical appointments and surgeries
  - Ordering supplies from four specialty pharmacies and seven different medical vendors

- Working with hospital, outpatient complex care team, social workers, Exceptional Family Member Program (EFPM), Early Intervention, Primary Care Physician and seven medical specialists for patient's best outcome
- 2016 - 2019 **Graduate Research Assistant, University of Hawai'i Cancer Center: Prevention and Cancer Control, USA**
- Data Collection (incl. participant recruitment) federal funded project: Marketing and Young Adult Behavior Study (for over 2400 young adults)
  - Analysis of data: ordered logistics regression
- 2015 **Graduate Research Assistant, Institute for Sport Science and Sports, Friedrich-Alexander-University Erlangen-Nuremberg, Germany**
- Project:** Physical activity recommendations – A project to further academically conceptualize physical activity recommendations
- Search strategies for literature search engines, such as PubMed and Scopus
  - Analysis of status-quo of physical activity guidelines for patients with non-communicable diseases
  - Literature search and selection of result for stroke
  - Quality assessment of articles through rating criteria based on the German Instrument DELBI - developed based on the instrument AGREE used in USA
- 2014 **Collaborator, London School of Hygiene and Tropical Medicine, UK and World Health Organization Regional Office for Europe, Copenhagen, Denmark**
- Analysis of status-quo of the Nutrition, Obesity and Physical Activity Platform and its policy documents across the WHO European region
  - Contacted and interviewed high-level stakeholders engaged in physical activity (PA) promotion in Austria, Germany, Finland, the UK, Switzerland, WHO and HEPA-Europe regarding development and impact of PA promotion policies
  - Recommendations for the European region
- 2013 **Assistant, Partner Outreach and Business Development Team**  
*United Nation Office for Project Services, UNOPS Headquarter, Denmark*
- Business Analysis and Partner Outreach to support UNOPS Sustainable Procurement Practice Group (SPPG)
  - Implementation of the knowledge management system for the SPPG Partner Outreach and Development team
- 2012 - 2013 **Carlo-Schmid Fellow, Strategic Partnership / Regional Director's Office**  
*WHO Regional Office for Europe, Denmark*
- Reviewed, monitored, analyzed and reported on on-going health-related legislative processes, partnership developments and activities, fundraising, donors
  - Prepared for high level meetings and in-house workshops as well as subsequent follow-up with partners such as UNFPA, UNAIDS, the World Bank
  - Briefing & reports on key issues, events, partners for Executive Management
  - Maintenance and evaluation of Partnership Information System (PAR)
- 2009 - 2010 **Student Assistant, Medicine & Health Sciences Department**  
*University of Bayreuth, Germany*
- Publication of the Rehabilitation Centre *Ederhof* magazine; Lecture assistance
- 2009 **Intern, Endowment Fund, Tan Tock Seng Hospital, Singapore**
- Organization of volunteer program and funding
- 2008 **Intern, Spinal and Brain Unit, Royal Rehabilitation Centre Sydney, Australia**
- Assisted with interventions and rehabilitation for people with spinal & brain injury
  - Developed user-guide & provision of tele-health services in client education

---

**HONORS AND AWARDS: UPON REQUEST**


---

**SELECTED POSTER AND CONFERENCE PRESENTATIONS**


---

**Hawai'i**

1. **Schmid S**, Heil D., Yoshida A., Ching L, Sentell T (2024) Metabolic equivalents of outrigger canoe paddling for health equity. Oral presentation at the Annual Pacific Rim International Conference on Disability and Diversity, organized by the Center on Disability Studies. O'ahu, Hawai'i, USA, 2024 (Accepted)
2. Yoshida A. Atkins A. Short C. **Schmid S**. (2024) Hawaii's Beach and Ocean Accessibility Map Pilot. Oral presentation at the Annual Pacific Rim International Conference on Disability and Diversity,

organized by the Center on Disability Studies. O'ahu, Hawai'i, USA, 2024 (Accepted)

3. **Schmid S**, Finn J, Phillips M, Thompson M, Hansen-Smith H, Ching L, Sentell T (2023) Outrigger canoe paddling: Culturally-relevant physical activity for the people of Hawai'i. 2023. Poster presentation at the Biomedical Science and Disparities Symposium JABSOM Hawai'i, April 20, 2023.
4. Thompson M, Phillips M, Rodericks R, **Schmid S**, Pirkle C, Ching L, Look M, Wu Y, Finn J, Sentell T (2023) Engagement in culturally-relevant physical activity (paddling, hula, surfing, and spearfishing) in the State of Hawai'i by age, island, race/ ethnicity, and gender. Poster presentation at the Biomedical Science and Disparities Symposium JABSOM Hawai'i, April 20, 2023.

#### National

5. **Schmid S**, Finn J, Phillips M, Thompson M, Hansen-Smith H, Ching L, Sentell T. (2023) Outrigger canoe paddling: Culturally-relevant physical activity for the people of Hawai'i across levels of the social ecological model. 2023. Oral presentation at the American Public Health Association Conference Atlanta, GA, November 15, 2023.
6. Sentell T, Thompson M, Rodericks R, **Schmid S**, Pirkle C, Ching L, Look M, Wu Y, Dudla S, Finn J, & Phillips M. (2023). Engagement in culturally-relevant physical activity (paddling, hula, surfing, and spearfishing) in the state of Hawai'i over the lifecourse. Oral presentation at the American Public Health Association Conference, Atlanta, GA, November 15, 2023.

#### International

7. Sentell T, Thompson M, Rodericks R, **Schmid S**, Pirkle C, Ching L, Look M, Wu Y, Finn J, & Phillips M. Culturally-relevant physical activity over the lifecourse and association with chronic disease. E-poster presentation at the European Public Health Conference, Dublin, Ireland, November 8-11, 2023.

#### SELECTED PEER-REVIEWED PAPERS

1. **Schmid S**, Troy C, Nigg C (2019). Physical activity & people with disabilities - A qualitative process and outcome pilot evaluation of the non-profit organization AccesSurf Hawai'i. *HJMPH*, 78,2.
2. **Schmid S** (2021) Program evaluation of AccesSurf Hawai'i, an adaptive surf, swim and canoe program for people with disabilities. Dissertation report to AccesSurf Hawai'i. [Scholarspace](#).

#### SELECTED GRANTS:

1. **Schmid S** (2023) Ola HAWAII. Principal Investigator. Metabolic equivalents of outrigger canoe paddling for health equity Project. Pending \$50,000
2. **Schmid S** (2023) GIA City and County. Grant Writer and Evaluator. AccesSurf's Active Aging and Oahu's Accessibility Map Project. Approved \$200,000
3. **Schmid S** (2022) GIA State. Grant Writer and Evaluator. *Volunteer Training*. Approved \$150,000
4. **Schmid S** (2022) Move United and Hartford. Grant Writer and Evaluator. *Adaptive Equipment*. Approved \$50,000
5. **Schmid S** (2021) GIA City and County. Grant Writer and Evaluator. *AccesSurf Program*. Approved \$200,000
6. **Schmid S** (2020) Craig H. Neilsen Foundation. Grant Writer and Principal Investigator. *AccesSurf. Pandemic Program Support*. Approved \$15,000.
7. **Schmid S** (2020) Craig H. Neilsen Foundation. Grant Writer and Principal Investigator. *AccesSurf. Adaptive Aquatic Sports for people with Spinal Cord Injury (SCI) and Volunteer Training*. Approved \$45,000.
8. **Schmid S** (2020) GIA City and County. Grant Writer and Evaluator. AccesSurf Program and Training Growth. Approved \$ 125,000
9. **Schmid, S** (2020). McInerney Foundation Grant Proposal. Grant Writer and Evaluator. *AccesSurf. Trainings and Virtual Training Handbook*. Funded \$40,000.
10. **Schmid, S**, Yoshida A (2019). GIA City and County. Grant Writer and Evaluator. AccesSurf Programs. *AccesSurf*. Funded \$123,966
11. **Schmid, S** (2019). FLEX Grant Proposal. Grant Writer and Evaluator. *AccesSurf. All Programs*. Funded \$30,000.
12. **Schmid, S** (2018). Atherton Foundation Grant Proposal. Grant Writer and Evaluator. *AccesSurf Hawai'i. Day at the Beach* Program improvement and addition. Funded \$25,000
13. **Schmid, S**, Yoshida A (2018). Hawaii Tourism Association Grant Proposal. Grant Writer and Evaluator. *AccesSurf*. Funded \$15,000
14. **Schmid, S**, Short, C (2017). FLEX Grant Proposal. Grant Writer and Evaluator. *AccesSurf. Day at the Beach*. Funded \$15,000.
15. **Schmid, S**, Short, C (2017/2016). Atherton Foundation. Grant Writer and Evaluator. *AccesSurf. Day at*

*the Beach*. Funded Total \$35,000.

16. **Schmid, S**, Short, C (2017). McInerny Foundation. Grant Writer and Evaluator. *AccesSurf. Day at the Beach and Clinics*. Funded \$40,000.

**COMPUTER SKILLS**

---

- |  |           |
|--|-----------|
| • Electronic work/communication: Internet, Email, Microsoft Office Package, Slack etc. | All:      |
| • Survey Software: Qualtrics, Formidable Forms, Wordpress, Survey Monkey               | Very good |
| • Quantitative Analysis: STATA, SPSS   | to        |
| • Qualitative Analysis: NVIVO, Dedoose, MaxQDA   | expert    |
| • Reference Manager: Endnote, Zotero, Citavi   | level     |
| • Visualization/ Data presentation: GIS, Canva   |           |
| • Virtual Meeting: Zoom, Webex, MicrosoftTeams   |           |

# SHAINA BACHSTEIN

## EXPERIENCE

### PROGRAM COMMUNICATIONS COORDINATOR

AccessSurf Hawai'i 2020 - Present

Oversees promotional and communications for the organizations. Works alongside the Program Administrator and Program Coordinator planning and communicating about programs and events.

### COMMUNICATIONS CONSULTANT

AccessSurf Hawai'i July 2020 - Dec. 2020

Oversees promotional and communications for the organizations. Works alongside the Program Administrator and Program Coordinator planning and communicating about programs and events.

### SOCIAL MEDIA MANAGER

AccessSurf Hawai'i 2016 - Present

Manage all social media presence and content on multiple platforms. Utilize social media analytical data and metrics to measure effectiveness. Design new, engaging content. Develop engagement strategies, including contests and giveaways, to enhance brand awareness.

### FLIGHT ATTENDANT

Hawaiian Airlines & 'Ohana by Hawaiian 2014 - Present

Ensure passenger safety onboard the aircraft, enforce Federal Aviation Administration regulations and company policy. Uphold customers needs and satisfaction, embodying the Aloha spirit and Hawaiian Hospitality.

### ABA THERAPIST

All About Behavior LLC 2013 - 2014

Provide developmental assessments and assisted with case management for children with autism spectrum disorders in the home, community, and school.


### SOCIAL MEDIA MANAGER & SALES ASSOCIATE


Plant Hawai'i & Aloha Pearls Hawai'i 2013 - 2014

Sales and Marketing. Create and manage Etsy website including content, sales, and communication. Manage Facebook posts and message communications.

## CONTACT

 808-372-0381

 shaina@accessurf.org

 46-153 Hilinama St  
Kaneohe, HI. 96744

## EDUCATION

B.A. Child and Adolescent  
Development & Psychology  
Point Loma Nazarene University,  
San Diego – 2009-2013

## SKILLS

- Efficient and organized
- Communication
- Writing
- Canva
- Mail Chimp
- Computer Skills
- Problem-Solving
- Project Management Tools
- Interpersonal Skills

# Russell James Kim

3593 Alani Drive • Honolulu, Hawaii 96822  
(808) 551-6824 • russkim80@gmail.com

---

## Summary:

Highly experienced IT engineer and manager with refined troubleshooting abilities. Ingenious in maximizing resources to meet all demands. Analytical leader with excellent multitasking abilities.

## Certifications:

- CompTIA Security+
- CompTIA A+
- Cisco Certified Network Associate (CCNA)
- Microsoft 70-410 Installing and Configuring Windows Server 2008
- American Red Cross Basic Lifeguard/First Aid/CPR with AED

## Work Experience:

12/19 – Present

Honolulu, Hawaii

### **AccesSurf Hawaii Inc. Program Administrator**

- Office administration: merchandise inventory and fulfillment, email and phone correspondence, equipment organization.
- Program support: configured and implemented a new information and check in database system, assists other staff members at all events and programs.
- IT support: assists other staff members with any IT related issues, website design and updates, email and website administration.

4/19 – 12/19

Honolulu, Hawaii

### **Self Employed Home Renovation Manager**

- Coordinated several house renovation projects including plumbing, electrical, carpentry, drainage, landscaping, and cabinet refacing.
- Interviewed potential contractors and reviewed quotes for work that needed to be completed.
- Oversaw all work to ensure quality workmanship and products were used.

11/14 – 8/18

Hickam AFB, Hawaii

### **NCI Inc./Agile Defense Field Service Engineer**

- Performed maintenance on physical and virtual servers, blade enclosures, network devices, tape backup devices, and SAN storage.
- Coordinated global projects involving deployments of hardware to Air Force bases around the Pacific Ocean and technical refreshes to upgrade older equipment.
- Traveled out of country to perform work on equipment located on a remote Air Force base.

10/10 – 4/14

Hickam AFB, Hawaii

### **Pelatron Inc./Valdez International Corp. Monitoring Management Subject Matter Expert**

- Supervised and trained USAF airmen how to operate and maintain the monitoring software and the virtual environment it is installed on.
- Managed the installation of client and server upgrades, e-mail notifications, display configurations, and updating leadership of any changes.

4/07 – 9/10

Hickam AFB, Hawaii

### **Washington Technology Group Network Engineer**

- Responsibilities included maintaining, troubleshooting, and upgrading network devices in various locations in and around the Pacific Theatre.
- Performed work on Cisco routers, switches, VPN devices, and CiscoWorks software as well as updated and closed tickets in the Remedy ticketing system.

### **Information Assurance Specialist**

- Responsibilities included the maintenance and health of network monitoring software as well as the stability of the notifications which are sent.
- Maintained the NetIQ AppManager software suite, EMC Ionix Smarts In Charge software suite, and Solarwinds installed on Dell and HP physical servers in a Microsoft Windows client/server environment.

### **Volunteer Experience:**

7/16-Present      **AccesSurf Key Leader**      Honolulu, Hawaii

#### **Water Safety Key Leader/Member of Leadership Committee**

- Providing a safe environment for everyone to experience the ocean.
- Constantly training and adapting to create a smooth program.
- Supervising volunteers to maintain a safe perimeter for all participants.

4/16-Present      **Hawaii Adaptive Surf Team**      Honolulu, Hawaii

#### **Volunteer/Water Safety/Athlete Assistance**

- Assisting competitive adaptive athletes at the local and international level.
- Helping adaptive athletes to compete by pushing them into waves.

4/15-Present      **AccesSurf Volunteer**      Honolulu, Hawaii

#### **Day at the Beach/Wounded Warrior**

- Transferring participants with disabilities into and out of the ocean and pools.
- Providing surf instruction to injured American service men and women.

### **Education:**

9/02-12/06      University of Hawaii Manoa Campus      Honolulu, Hawaii

B.B.A., Management Information Systems

7/98-12/02      Honolulu Community College      Honolulu, Hawaii

A.S., Computing Electronics Networking Technologies

8/94-6/98      Roosevelt High School      Honolulu, Hawaii

### **Security Clearance:**

10/12 – 10/17      Department of Defense Secret Clearance

10/07 – 10/12      Department of Defense Top Secret Clearance

**Ann Hamanalau Yoshida CRC, OTD**

Email: [otdr.yoshida@gmail.com](mailto:otdr.yoshida@gmail.com)

Digital Resume: <https://sites.google.com/a/pacificu.edu/ann-yoshida-ot/home>

Phone: 808-741-6899

**QUALIFICATIONS:**

Utilizing innovation and best practice models, my life is devoted to building a community of inclusion, empowerment and excellence throughout the world of meaningful and purposeful occupation. In work, education, recreation or selfcare, my education and experience of 18 years helps support, innovate and sustains programming, education, capacity and funding in a fun and progressive manner using theoretical framework to build occupational and rehabilitation practice. With speech pathology, rehabilitation counseling and occupational therapy as my educational foundation, I embrace opportunities to support communication, relationship building and development of occupational development. All to develop a community of inclusion where an individual that has been marginalized from society, has the opportunity, incentive and exposure to build their physical, emotional, spiritual, social, and academic functions. Utilizing the scientific process and evidence based practice, my efforts to build a body of knowledge surrounding adaptive equipment, community rehabilitation and occupational justice. Volunteerism is essential to build a community that paints a beautiful picture of disability. As a professional athlete, opportunities to travel the world, develop as an athlete and share my experience have given me a platform that has cultivated the opportunities and my desire to build a sport, mindset and community around balance, health, well being.

**PHILANTHROPY**

2011-2020 Life Accessed, Speaker and co-founder

2005-2020 AccesSurf, Volunteer/Athlete

2008-2010 National Rehabilitation Association, Student Vice President

2007-2008 State of Hawaii Neurotrauma Advising Board, Member

2000-2008 Independent Living Waipahu, President of the Board

**EDUCATION**

2013-2017 Doctorate in Occupational Therapy, Pacific University

2008-2010 Masters in Rehabilitation Counseling, Utah State University

2002-2005 Bachelors of Science, Speech Pathology & Audiology, University of Hawaii

1998 Emergency Medical Technician-B, Utah Valley State College

1996-1999 Human Biology & Child Cognition, Brigham Young University

**EMPLOYMENT:**

2018-present Transition Program Director, Network Enterprises, Inc.

2017-present Training and Innovation Specialist, AccesSurf Hawaii

2011-2015 Professor, Far East University, Social Welfare/ Special Education/ Occupational Therapy

2009 Rehabilitation Supervisor, Nevada State DETR, North



2008-2013 Rehabilitation Partner, Ed Howden and Associates  
2006-2007 K-5 Art Instructor, Palisades Elementary

**FIELDWORK EXPERIENCE:**

2016 OTS Outpatient Neuro Rehabilitation, ALS clinic, Concussion, Driving Rehab, Providence Health  
2015 OTS Acute care, Seating, Research, MDA clinic, Cardiac rehab, Nationwide Children's Hospital  
2014 OTS Middle school, Occupational Balance, Miller Education  
2013 OTS PreK-6th, Activity tolerance, Variety Schools, Learning Tree  
2013 OTS Justice System, Occupational Justice, Washington County Correctional Facility

**SPORTING:**

2020 Ocean of Possibilities, awardee  
2018 Hawaii Adaptive Surfing Championships, Open Prone 2<sup>nd</sup>  
2018 Hawaii Watermen's Hall of Fame, Inductee  
2017-2018 International Surfing Association, Woman's Prone Adaptive Surfer World Champion  
2016 International Canoe Federation, Woman's, V-1 Va'a World Champion  
2016 International Canoe Federation, Woman's K-1 Paralympian

**CERTIFICATIONS:**

Certified Rehabilitation Counselor #00112029  
Basic Life support and First aid exp. 2020  
HIPPA certified, exp 2020  
USADA Drug free educator, exam date 2016

**COURSES TAUGHT:**

Research and Presentation Occupational Science	Assistive Technology Design
Social Rehabilitation	Survey of Disability
Adaptive Recreation	Culture in Occupation
Rehabilitation Counseling Disability and Human Sexuality	Introduction to Social Problems
	International Foundations: Resource Identification
	Global Leadership Development

**PUBLICATIONS:**

Yoshida, A. (2017). State of Hawaii, Neurotrauma Advisory Spinal Cord Awareness education website. Found here: <http://health.hawaii.gov/nt/spinal-cord-injury-awareness-month/>

Yoshida, A. (2017). Occupational performance using a culturally sanctioned activity model. Pacific University Commons. Symposium given August 2017. <https://commons.pacificu.edu/otde/>

---

## Simone Schmid, PhD, MPH, MA, B.Sc

### SUMMARY

---

I am an aspiring health professional with a *PhD in Public Health, Master's degree in Physical Activity and Health, a Master's degree in Public Health and a Bachelor's degree in Health Economics/Health Care Management*. I have professional public health experience in the areas of health policy, research, evaluation, development cooperation, and management. This experience was gained within the United Nations, non-profit organizations and the private sector in Hawai'i, England, Denmark, Germany, Singapore and Australia. My goal is to connect academia and health practitioners to design applicable, research-based, innovative solutions and policies addressing health behaviour, especially to improve health equity by supporting disadvantaged population groups to reach their full potential.

### EDUCATION

---

August 2016 - May 2021 USA	<b>PhD Public Health</b> <b>University of Hawai'i (UH) at Manoa</b> <i>Dissertation title: Program Evaluation of AccesSurf Hawai'i, an adaptive surf, swim and canoe program for people with disabilities.</i>
October 2014 - July 2016 Germany	<b>M. A., Physical Activity and Health</b> <b>Friedrich-Alexander University Nuremberg-Erlangen</b> <i>Thesis in collaboration with AccesSurf Hawai'i: Physical Activity Promotion among individuals with disabilities - Outcome evaluation of AccesSurf Hawai'i – a non-profit organization- through a focus group</i>
September 2013-2014 UK	<b>M. Sc., Public Health, Specialization in Health Promotion</b> <b>London School of Hygiene and Tropical Medicine (LSHTM)</b> <i>Thesis in collaboration with the World Health Organization (WHO): Analysis of the relationship between national policies and physical activity, within the WHO European Region</i>
October 2008- June 2012 Germany	<b>B. Sc., Health Economics/ Health Care Management</b> <b>University of Bayreuth</b> Awarded best graduate 2012 <i>Thesis: The role of migration as an influencing factor on children's and youth's health - An analysis of the status quo and possible approaches to action</i>
August 2010-2011 USA	Student Abroad: Nursing, Health Promotion and Alternative Medicine (Dean's list) <b>Hawai'i Pacific University and University of Hawai'i</b>

### PUBLIC HEALTH WORK EXPERIENCE

---

Since March 2015 (contractor), (2019: staff) USA	<b>Program Evaluator, AcesSurf Hawai'i</b> adaptive aquatic programs for people disabilities <ul style="list-style-type: none"><li>• Monitoring and Evaluation, e.g. Focus group with people with physical disabilities as an outcome evaluation, needs assessment, Outcome evaluation</li><li>• Analysis of current funding situation and possibilities; Grant Application for grants – approved for 15 grants (&gt;\$750,000)</li></ul>
August 2016 to September 2019 USA	<b>GRA, UH Cancer Center: Prevention and Cancer Control</b> <ul style="list-style-type: none"><li>• Facilitating Data Collection and Analysis</li></ul>
March-September 2015 Germany	<b>Research Assistant, Institute for Sport Science and Sports</b> <b>Friedrich-Alexander-University Erlangen-Nuremberg; Germany</b> <b>Project: Physical Activity Recommendations – A project to further academically conceptualize physical activity recommendations</b> <ul style="list-style-type: none"><li>• Search strategies for literature search engines, such as PubMed and Scopus</li><li>• Analysis of current status of Physical Activity Guidelines for patients with NCDs</li><li>• Literature search and selection of result for stroke</li><li>• Quality assessment of articles through rating criteria based on the German Instrument DELBI - developed based on the instrument AGREE used in the US</li></ul>
June-September 2014 London, UK &	<b>Collaborator, LSHTM and WHO</b> <ul style="list-style-type: none"><li>• Analysis of current status of the Nutrition, Obesity and Physical Activity Platform and its policy documents across the WHO European region</li></ul>

Copenhagen, Denmark	<ul style="list-style-type: none"> <li>• Contact and interviews with high-level stakeholders engaged in physical activity (PA) promotion in Austria, Germany, Finland, the UK, Switzerland, WHO and HEPA-Europe: regarding development and impact of PA promotion policies</li> <li>• Recommendations for WHO-EURO</li> </ul>
June-July 2013 Copenhagen, Denmark	<p><b>Assistant, Partner Outreach and Business Development Team</b> <i>United Nation Office for Project Services, UNOPS Headquarter</i></p> <ul style="list-style-type: none"> <li>• Business Analysis and Partner Outreach to support UNOPS Sustainable Procurement Practice Group (SPPG)</li> <li>• Implementation of the knowledge management system for the SPPG Partner Outreach and Development team</li> </ul>
October 2012- June 2013 Copenhagen, Denmark	<p><b>Carlo-Schmid fellow, Strategic Partnership / Regional Director's Office</b> <i>WHO Regional Office for Europe</i></p> <ul style="list-style-type: none"> <li>• Review, monitor, analyze and report on on-going health-related legislative processes, partnership developments and activities, fundraising, donors</li> <li>• Preparation for high level meetings and in-house workshops as well as subsequent follow-up with partners such as UNFPA, UNAIDS, the World Bank</li> <li>• Briefing &amp; reports on key issues, events, partners for Executive Management</li> <li>• Maintenance and evaluation of Partnership Information System (PAR)</li> </ul>
May 2009- June 2010 Bayreuth, Germany	<p><b>Student Assistant, Medicine Department &amp; Health Sciences (IMG)</b> <i>University of Bayreuth</i></p> <ul style="list-style-type: none"> <li>• Publication of the Rehabilitation Centre <i>Ederhof</i> magazine</li> <li>• Lecture Assistance</li> </ul>
August-October 2009 Singapore	<p><b>Intern, Endowment Fund, Tan Tock Seng Hospital</b></p> <ul style="list-style-type: none"> <li>• Organization of volunteer program and Funding</li> </ul>
May-July 2008 Sydney, Australia	<p><b>Intern, Spinal and Brain Unit, Royal Rehabilitation Centre Sydney</b></p> <ul style="list-style-type: none"> <li>• Assistance with interventions and initiatives for spinal &amp; brain injury rehabilitation</li> <li>• Development of user-guide &amp; provision of tele-health services in client education</li> </ul>

## PRESENTATION(S)

---

Schmid, S. (2016). *Physical Activity and people with disabilities – A qualitative process and outcome evaluation of AccesSurf Hawai'i*. Oral session at the Hawai'i Public Health Conference, organized by the Hawai'i Public Health Association, O'ahu, Hawai'i, USA, 2016.

## SCHOLAR- & FELLOWSHIP(S)

---

2016-2020	<p><b>UH Manoa, Office of Public Health Achievement Scholarship (\$4000), Pauline Stitt Scholarship (\$2000)/ Academic Merit, June Chun Naughton ISS Scholarship (\$1000), Kenji Yamaguma Scholarship (\$700)</b></p>
October 2012- April 2013	<p><b>Paid Carlo-Schmid Fellow</b> to support the WHO's strategic partnership. German National Merit Foundation and the German Academic Exchange Service (DAAD)</p>
October 2008- May 2009-2016	<p><b>Full stipend including tuition fees for Bachelor and Masters</b> Evangelisches Studienwerk e.V. Villigst, protestant scholarship for gifted students Konrad Adenauer-Stiftung, political foundation for academic excellence</p>

## PAPERS & AWARD

---

2021 Induction into the Delta Omega Honorary Society in Public Health for PhD Graduate

Pallav Pokhel, Simone Schmid, Ian Pahano (2019). *Physical activity and use of cigarettes and e-cigarettes among young adults. American Journal of Preventive Medicine.* 58 (4)

Schmid Simone, Cara Short Troy, Claudio Nigg (2019). *Physical Activity & People with Disabilities -A Qualitative Process and Outcome Pilot Evaluation of the Non-Profit Organization AccesSurf Hawai'i.* HJMPH, 78,2. [Winner of the 3rd annual Hawaii Journal of Medicine & Public Health Writing Contest (\$500)]

Pallav Pokhrel, Pebbles Fagan, Thaddeus A. Herzog, Simone Schmid, Crissy T. Kawamoto, Jennifer B. Unger (2017). *Comparison of Measures of E-cigarette. Advertising Exposure and Receptivity.* Tob Regul Sci; 3(4): 424-434.