





December 15, 2022

## Senate Committee on Water and Land Briefing

- DLNR Division of Aquatic Resources Overview
- Holomua Initiative Update

## DAR's Mission:

To work with the people of Hawai'i to manage, conserve and restore the state's unique aquatic resources and ecosystems for present and future generations



## ARTICLE XI

### CONSERVATION, CONTROL AND DEVELOPMENT OF RESOURCES

#### CONSERVATION AND DEVELOPMENT OF RESOURCES

**Section 1.** For the benefit of present and future generations, the State and its political subdivisions shall conserve and protect Hawaii's natural beauty and all natural resources, including land, water, air, minerals and energy sources, and shall promote the development and utilization of these resources in a manner consistent with their conservation and in furtherance of the self-sufficiency of the State.

All public natural resources are held in trust by the State for the benefit of the people. [Add Const Con 1978 and election Nov 7, 1978]



## DAR's Kuleana

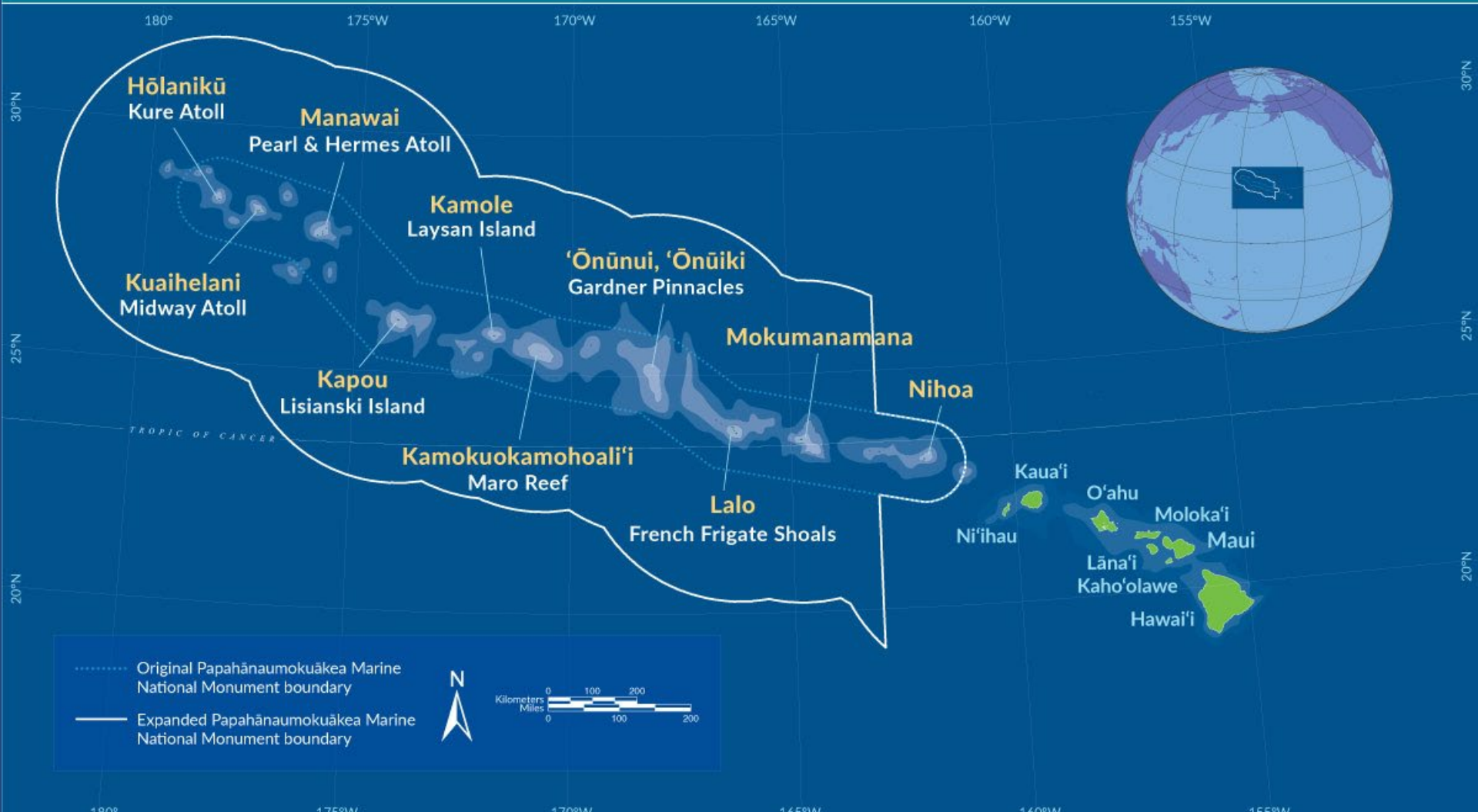
- State waters (3-miles)
- Over 2-million acres of ocean
- Over 1,400-miles of shoreline
- 440,000 miles of stream
- >400 Estuaries





Hawaii Division of Aquatic Resources

## » Ko Hawai'i Pae 'Āina - Hawaiian Archipelago





## Benefits:

- **Shoreline Protection: \$835 million/yr**
- **Coral Reefs valued at \$360 million/yr**
- **Nearshore Fisheries: \$10-16 million/yr**
- **Local Food Production: 7 million meals/yr**





## Benefits:

- Culture and Way of Life







Hawaii Division of Aquatic Resources

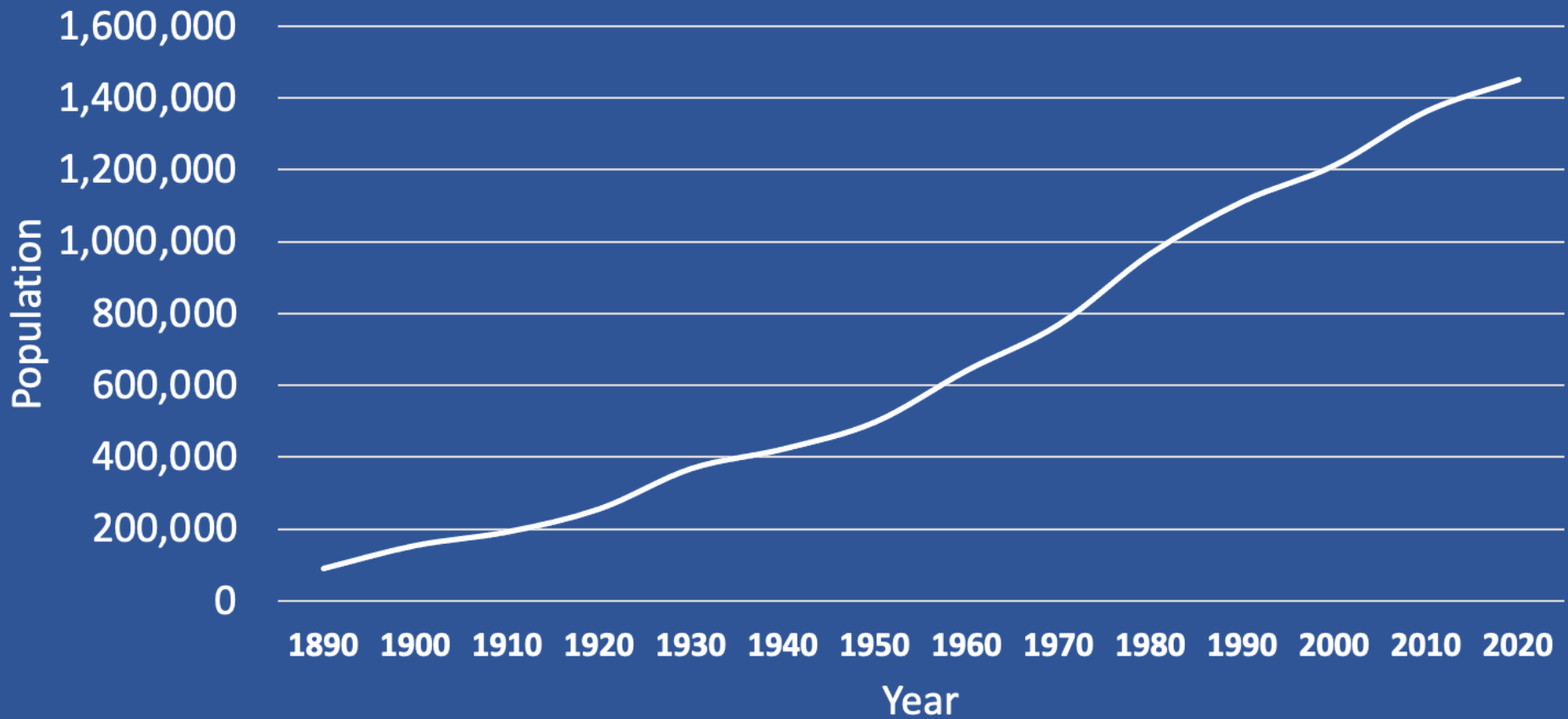


## KEY THREATS

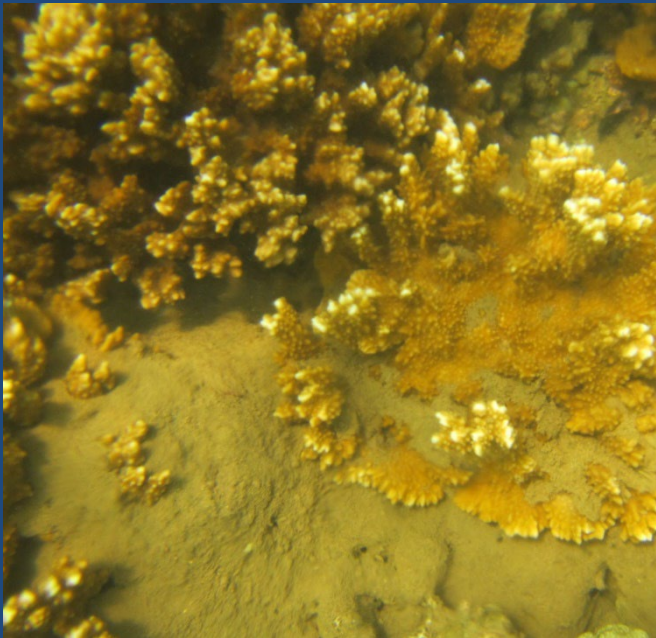
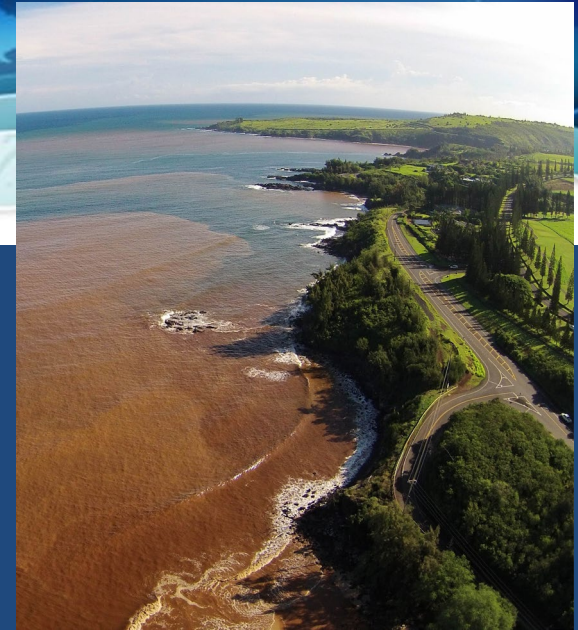





## Hawaii Population

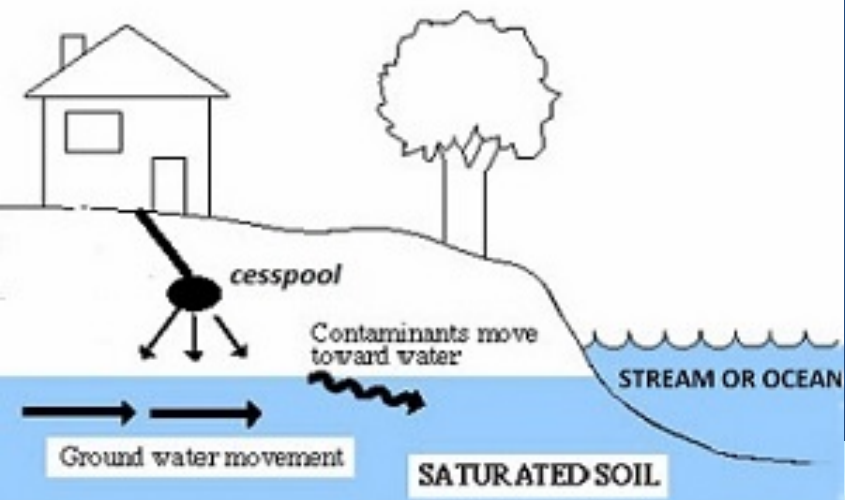






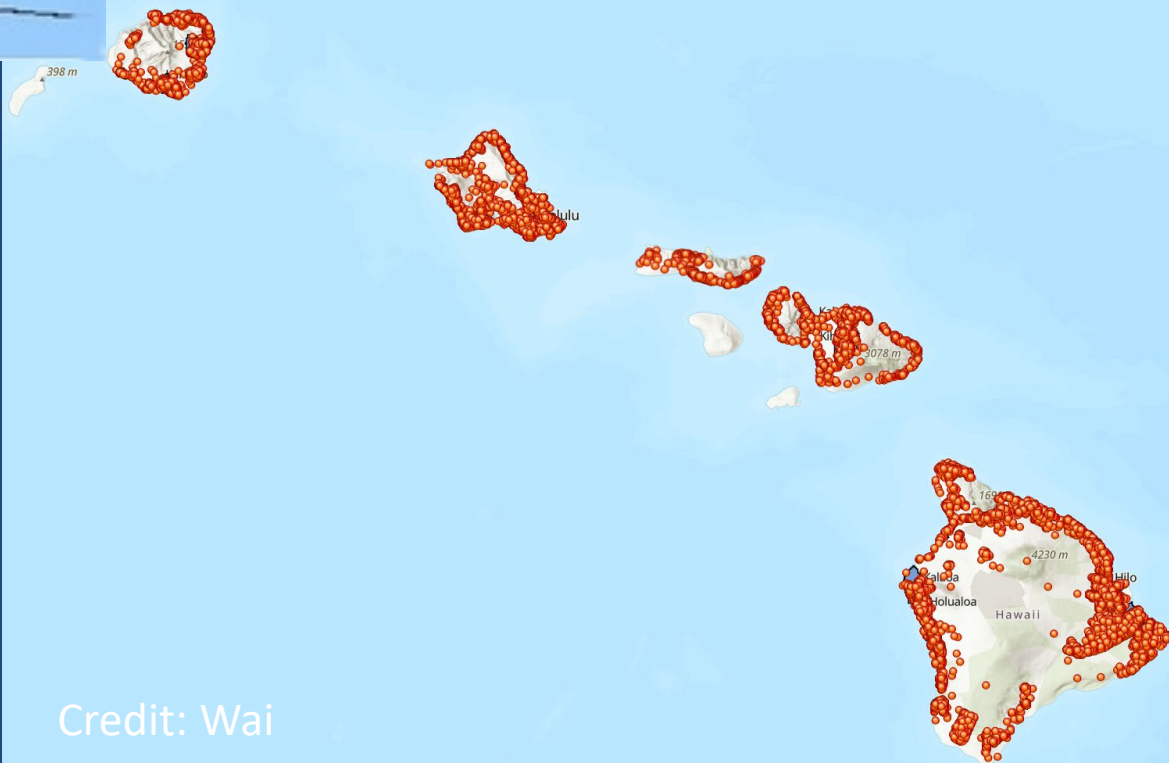
# Sedimentation

 Cesspools contaminate our ground water, streams and oceans



# Sewage Pollution

Credit: Dept. of Health



Credit: Wai



# Water Availability







Invasive Species



# Climate Change







# THREATS TO CORAL REEFS CLIMATE CHANGE

Increased greenhouse gases from human activities result in climate change and ocean acidification.

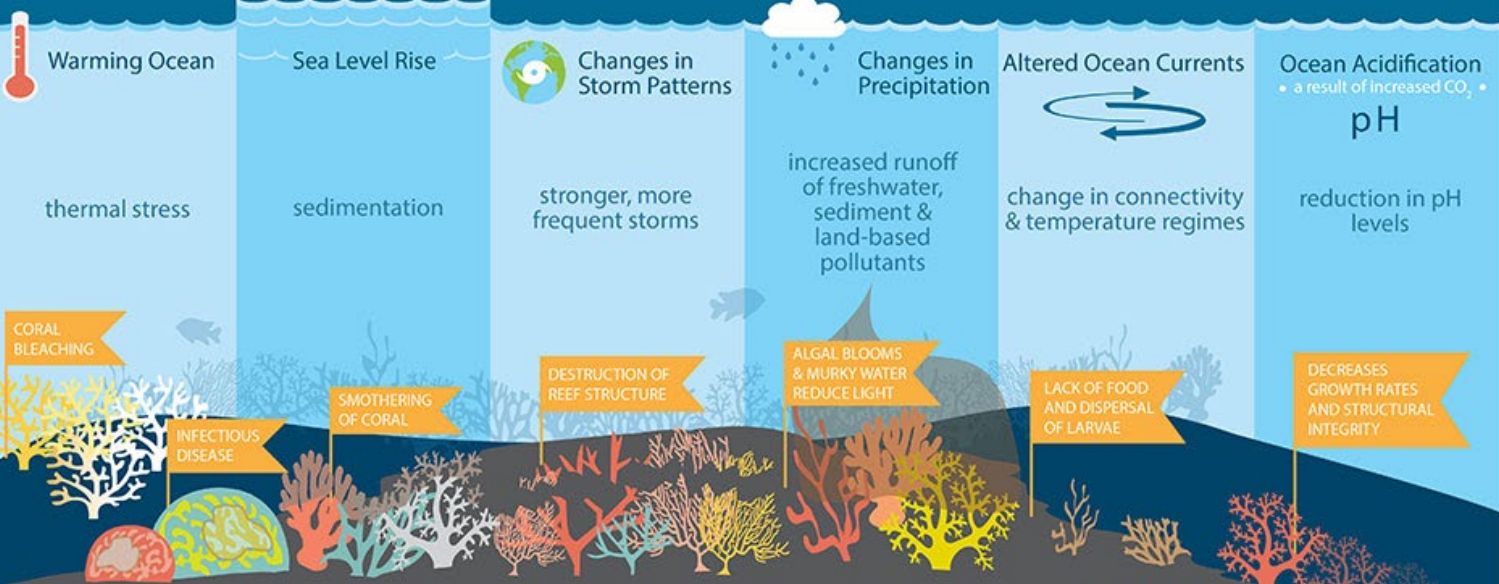
CLIMATE CHANGE = OCEAN CHANGE



## CO<sub>2</sub>

The world's ocean is a massive sink that absorbs carbon dioxide (CO<sub>2</sub>). Although this has slowed global warming, it is also changing ocean chemistry.

## CLIMATE CHANGE dramatically affects CORAL REEF ECOSYSTEMS



Impacts are immediate and long term, direct and indirect - A weakened coral is vulnerable.

## HOW YOU CAN HELP

Shrink your carbon footprint to reduce greenhouse gases.

- Drive less.
- Reduce, reuse or recycle.
- Purchase energy-efficient appliances and lightbulbs.
- Print less. Download more. Use less water.

Do your part to help improve overall coral reef condition.

- Reduce the use of lawn and garden chemicals.
- DO NOT dump household chemicals in storm drains.
- Choose sustainable seafood. [www.FishWatch.gov](http://www.FishWatch.gov)
- Learn about good reef etiquette and practice it when in the water.
- Volunteer for beach and waterway clean ups.





# Unsustainable Fishing

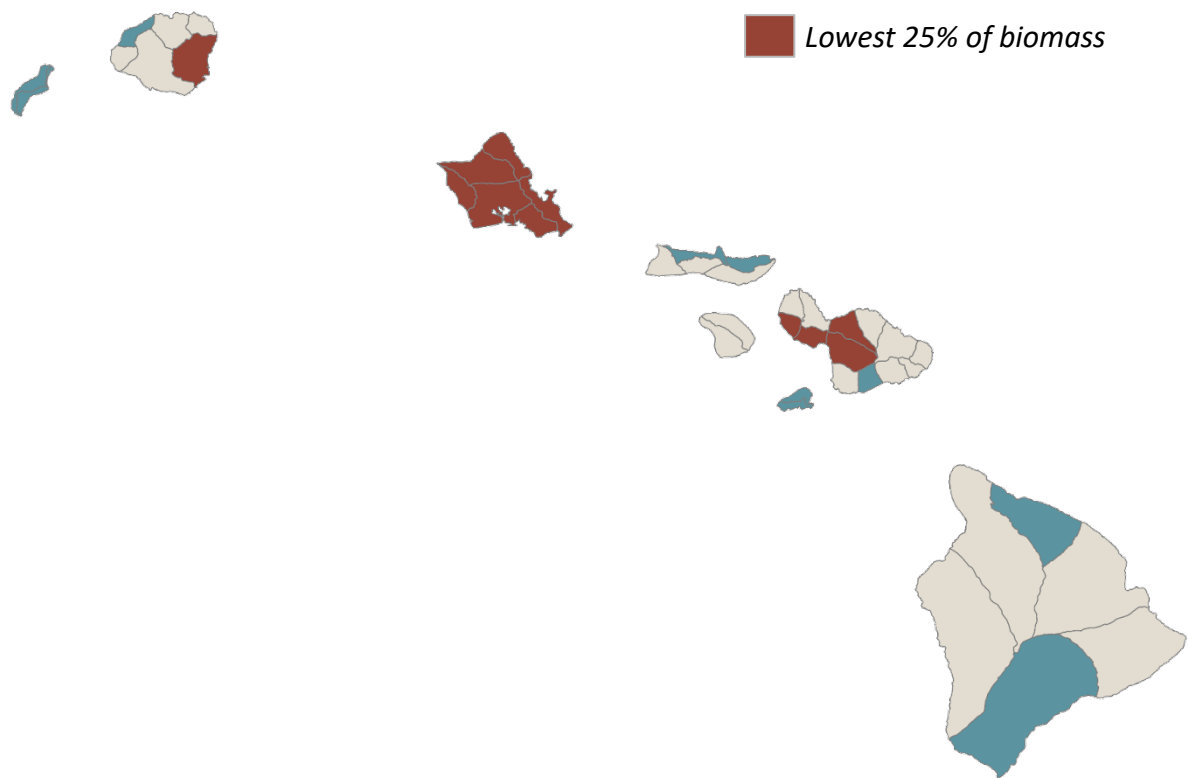
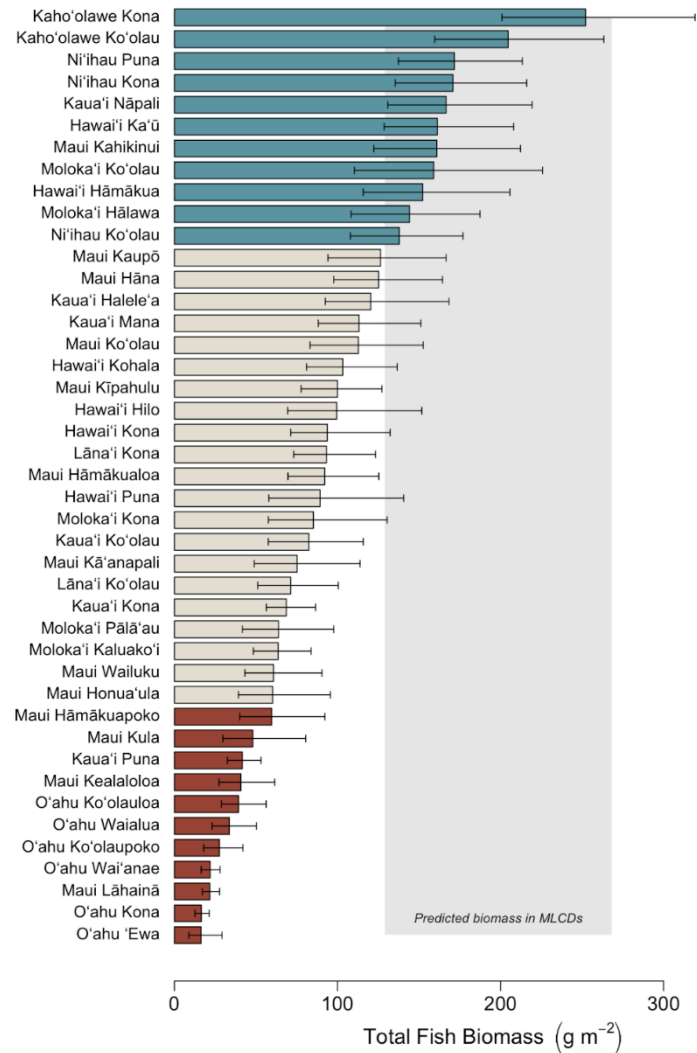
**Fre\$h**

\$6

Listed over a week ago in Honolulu, HI

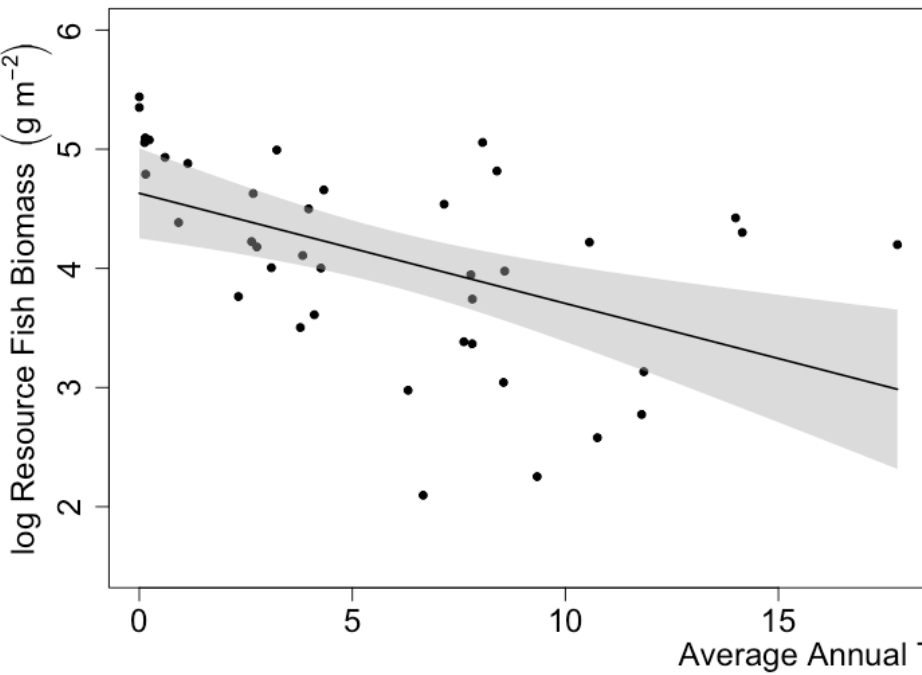


# Nearshore Fisheries



# Fisheries Impacts

Popular Food Fish







Hawaii Division of Aquatic Resources



**Protection &  
Restoration**



**Monitoring**



**Place-based  
Planning**



**Pono  
Practices**





# Fisheries Management

- Commercial Fisheries
- Recreational Fisheries
- Protected Species
- Rulemaking
- Administrative Enforcement





# Commercial Fisheries

- Licensing Section
- Statistical and Database
- Fisheries Section





# Recreational Fisheries

## Sportfish Restoration Program

- Rainbow trout fishing in Kōke'e
- Bass restocking in Wahiawa Reservoir
- FAD Deployment
- Life History study of uouoa mullet
- Weke and moi tagging
- Artificial Reefs
- Education and Outreach
- Hawaii Marine Recreational Fishing Survey





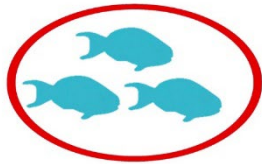
# Protected Species

- Monk Seals, Turtles, False Killer Whales
- Outreach and education, monitoring, and response
- Humpback Whale Sanctuary Co-Management



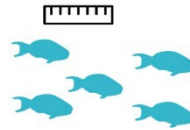


# Administrative Rulemaking



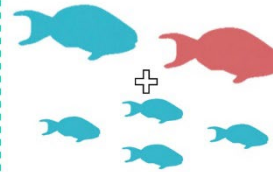
Take only what  
you need

**Bag Limit**



Let the keiki  
grow

**Size  
Limit**



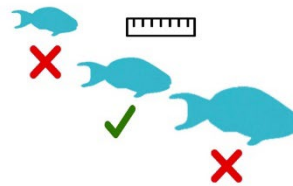
Let the fish  
reproduce

**Closed  
Season**



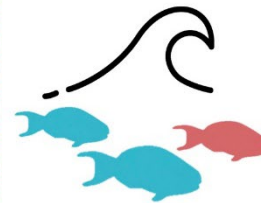
Use the right gear

**Gear  
Regulations**



The sweet spot:  
catch medium fish

**Slot Limit**



Respect Local Rules

**Place-based  
Regulations**

# Fisher Engagement

- Fishers Working Group
- SAFE Meeting
- Holoholo Fisher Talk Story
- Hawaii Fishing News Articles
- Lawai'a Pono
- West Hawaii Fisheries Council
- Western pacific Fisheries Council
- Kaneohe Bay Regional Council

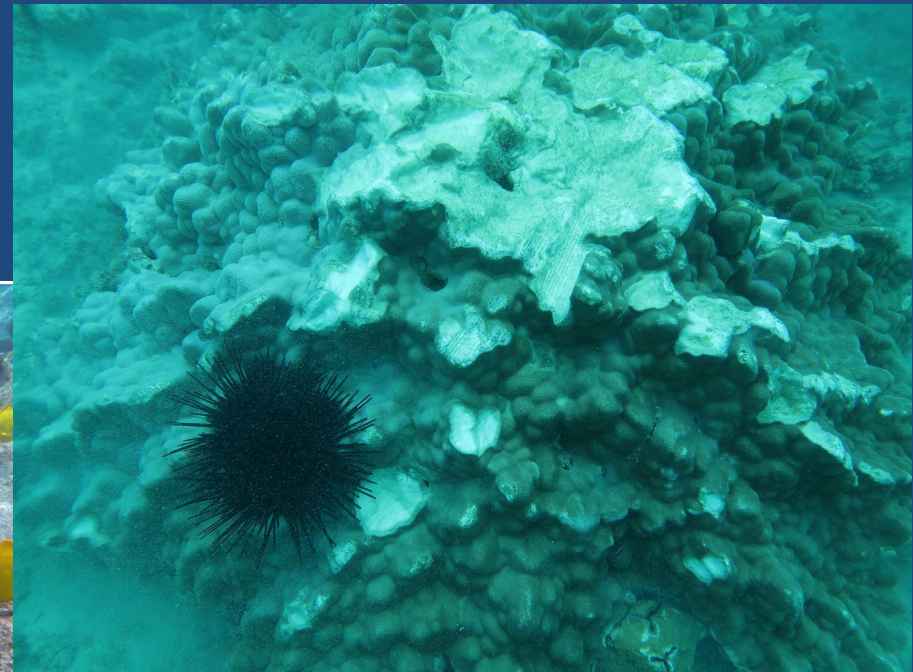




# Administrative Enforcement

*Pursue administrative enforcement of aquatic resource violations*

- Coral & live rock damage from vessel groundings and illegal anchoring
- Aquarium fish poaching— 3 recent cases
- Stream poisoning incident in Pahe'ehe'e Stream





# Watershed Restoration

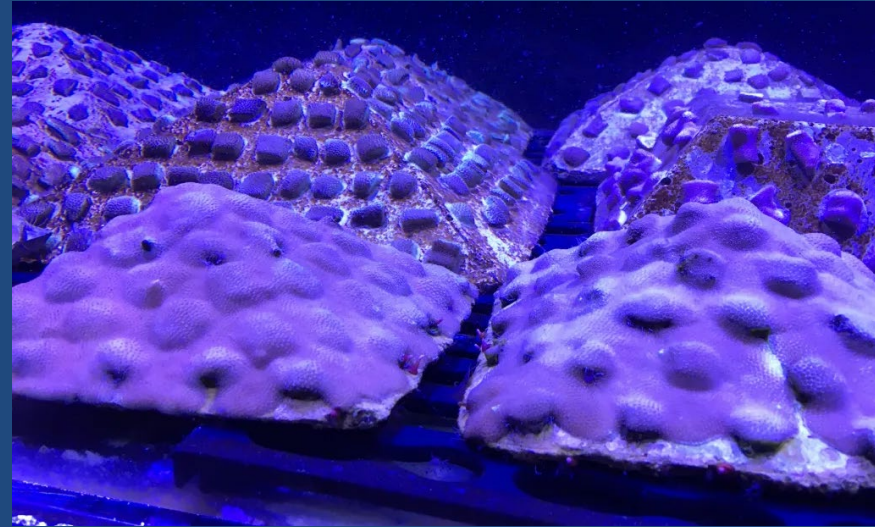
- Partnership Sites
  - West Maui
  - South Kohala
  - Honouliuli
  - He'eia





# Coral Restoration

- Coral nursery
- Coral restoration planning
- Kona and Waikiki coral restoration projects





# Limu Restoration

- *Restore culturally significant limu, and habitat for aquatic resources*

## Limu Restoration Nursery

Healthy and Diverse  
Native Limu  
Communities =  
Healthy Local  
Communities

This area is utilized for the culturing, propagation, and sharing of limu and its importance in Hawai'i's native ecosystems



For more information please visit  
<https://dlnr.hawaii.gov/dar/>





# Aquatic Invasive Species

## *Prevention, Rapid Response, and Control*

- Wailoa tilapia tournament
- Corallimorph at Ala Wai Small Boat Harbor
- Alien coral in Kauai and Kaneohe Bay
- Water hyacinth removal Kauai
- Ballast water and hull fouling





# Coral Disease Prevention



Ballast Water

Image Credit: Sonora Meiling (University of the Virgin Islands)



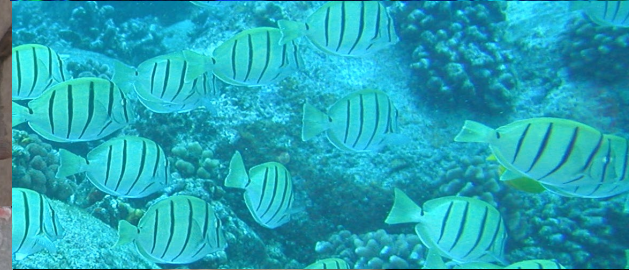
# Sea Urchin Hatchery

- Invasive Algae Control
  - Kaneohe Bay
  - Waikiki
  - Maunalua Bay (pilot)





# Streams and Estuaries





# Environmental Damage Response

- Coral damage events
- Red Hill





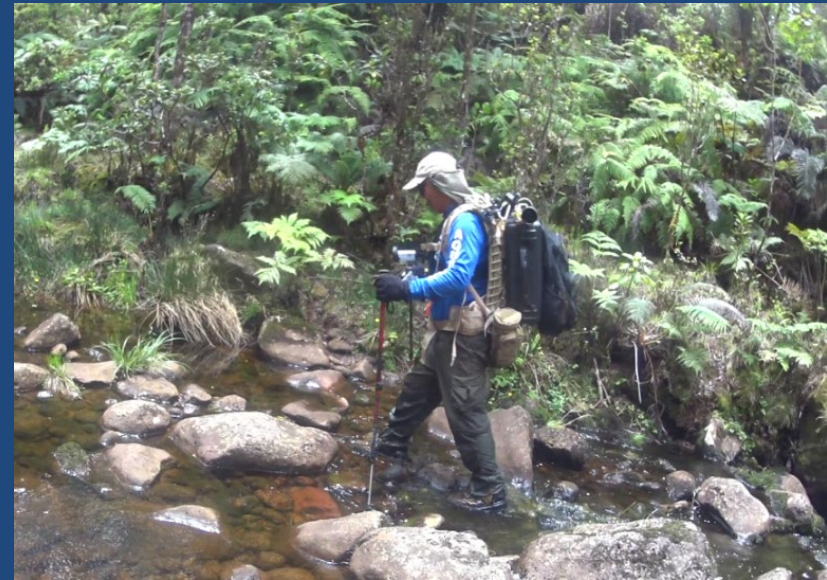
# Special Activity Permits

- Research
- Coral Restoration
- Coral restoration permitting framework
- Papahānaumokuākea
- Native Hawaiian Traditional and Customary Practices (explore adding)



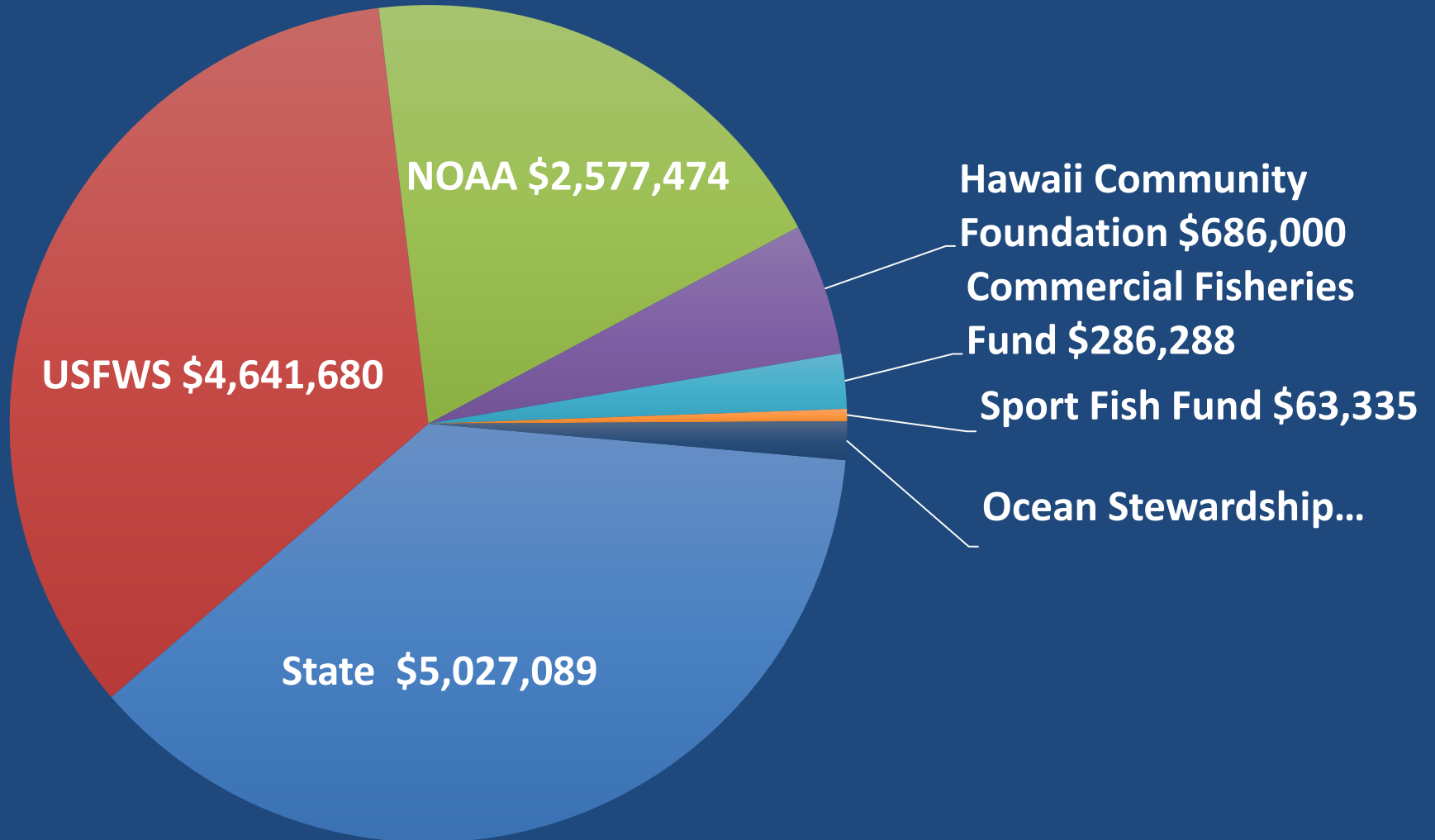


# Ecosystem Monitoring





# DAR Budget FY 2023





## Staffing:

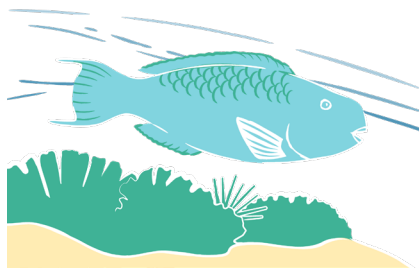
- 77 civil service positions
- 26 Vacancies (4 are Fed funded)
- ~50 contract staff (RCUH)
- Re-organization underway



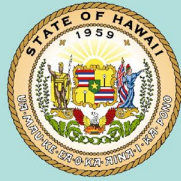


# HOLOMUA INITIATIVE

Engaging communities to effectively manage the nearshore resources of Hawai'i







# SUSTAINABLE HAWAII INITIATIVE

Strengthening our waters, land and food for Hawaii's communities

double local food production



100% increase in local agricultural production by 2020

Hawaii interagency biosecurity plan



Stronger invasive species policy, infrastructure and capacity by 2027

30 x 30 watershed protection



30% of priority watersheds protected by 2030

30 x 30 marine management



30% of nearshore marine areas effectively managed by 2030

100% renewable energy



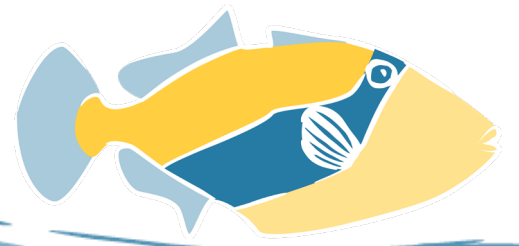
Complete transfer to clean, renewable energy by 2045



## Aloha+ CHALLENGE

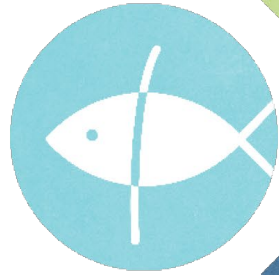






# Management Pillars

MONITORING



PLACE-BASED  
PLANNING



PROTECTION  
AND RESTORATION



PONO  
PRACTICES



# What the Holomua Initiative is... and is not...

## The Holomua Initiative Is:

- A process to engage stakeholders
- To ensure healthy reefs and abundant resources for future generations
- Supports fishing and fishers
- Adaptive
- Inclusive
- Nearshore waters
- Sustainable fishing
- Restoring reefs for shoreline protection

## The Holomua Initiative is not:

- **Not** about banning fishing
- **Not** about closing areas to fishing
- **Not** about offshore fishing

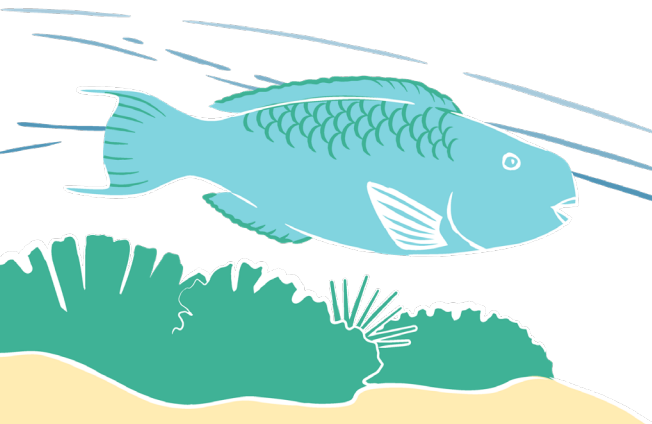
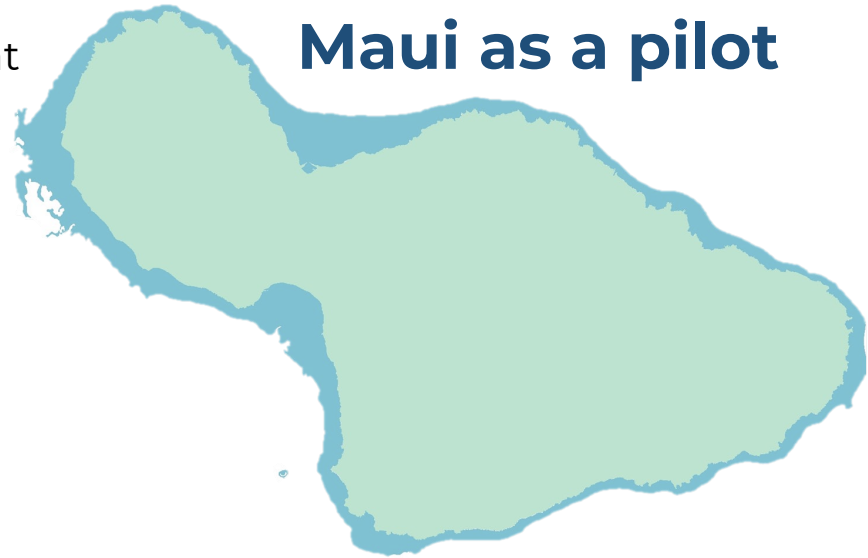


# Community Engagement Process

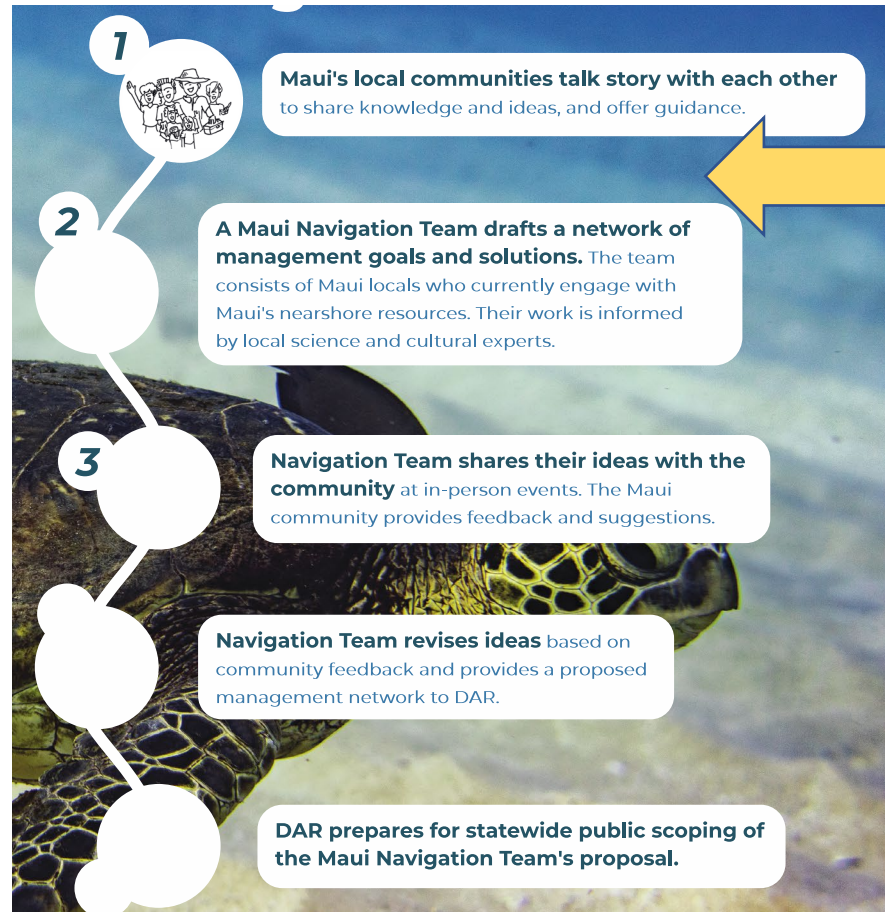
## Goals

- Get people involved!
- Talk Story
- Compile concerns and potential solutions at the island scale
- Form Navigation Team for Maui
- Build Island Management Plan
- Build partnerships

**Maui as a pilot**



# Community Engagement Process



**WE ARE HERE**

Building Maui Navigation Team based on community-provided nominations

## Ch. 91 Rule Making Process





# Maui Talk Story Sessions



## Teach Us

What kind of fishing do you do?  
Please place a dot in all that apply.

Boat-based Fishing Ex: Trolling, Bottom	Pole & Line From Shore Ex: Whipping, Dunking	Spearfishing or Diving
Hand Harvest	Net Fishing Ex: Throw Net, Surround Net	I do not fish

photo: NOAA



# HFACT Meetings

## Talk Story with HFACT



Hawai'i Fishermen's Alliance for Conservation and Tradition, Inc.

## HOLOMUA ROADSHOW

### Biggest change to fishing rules in decades!

Learn from fishermen what the potential impacts of DLNR's 30 x 30 initiative may be across the state.

#### Bag Limits?

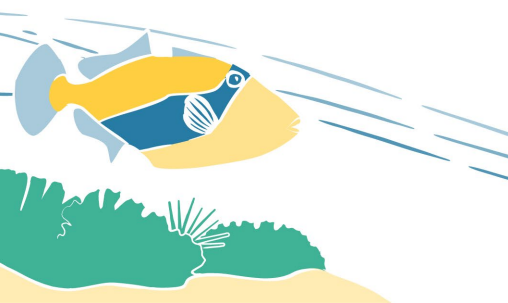
#### Closed Areas?

#### Fishing Gear Restrictions?

Learn how to get involved in science to monitor your nearshore fisheries.

 [HfactPhil@gmail.com](mailto:HfactPhil@gmail.com)

 [facebook.com/hfact4u](https://facebook.com/hfact4u)



### Statewide meetings: 6:30 - 8:30pm at the following locations

October 4	Lihue, Kauai	Wilcox Elementary School
October 6	Wailuku, Maui	The Cameron Center Auditorium
October 11	Kaneohe, Oahu	Kaneohe Elementary School
October 12	Waianae, Oahu	Nānāikapono Elementary School
October 13	Honolulu, Oahu	Robert Louis Stevenson Middle School





# Additional Meetings

(HFACT HOSTED)

## Holomua Information Session on Kaua'i

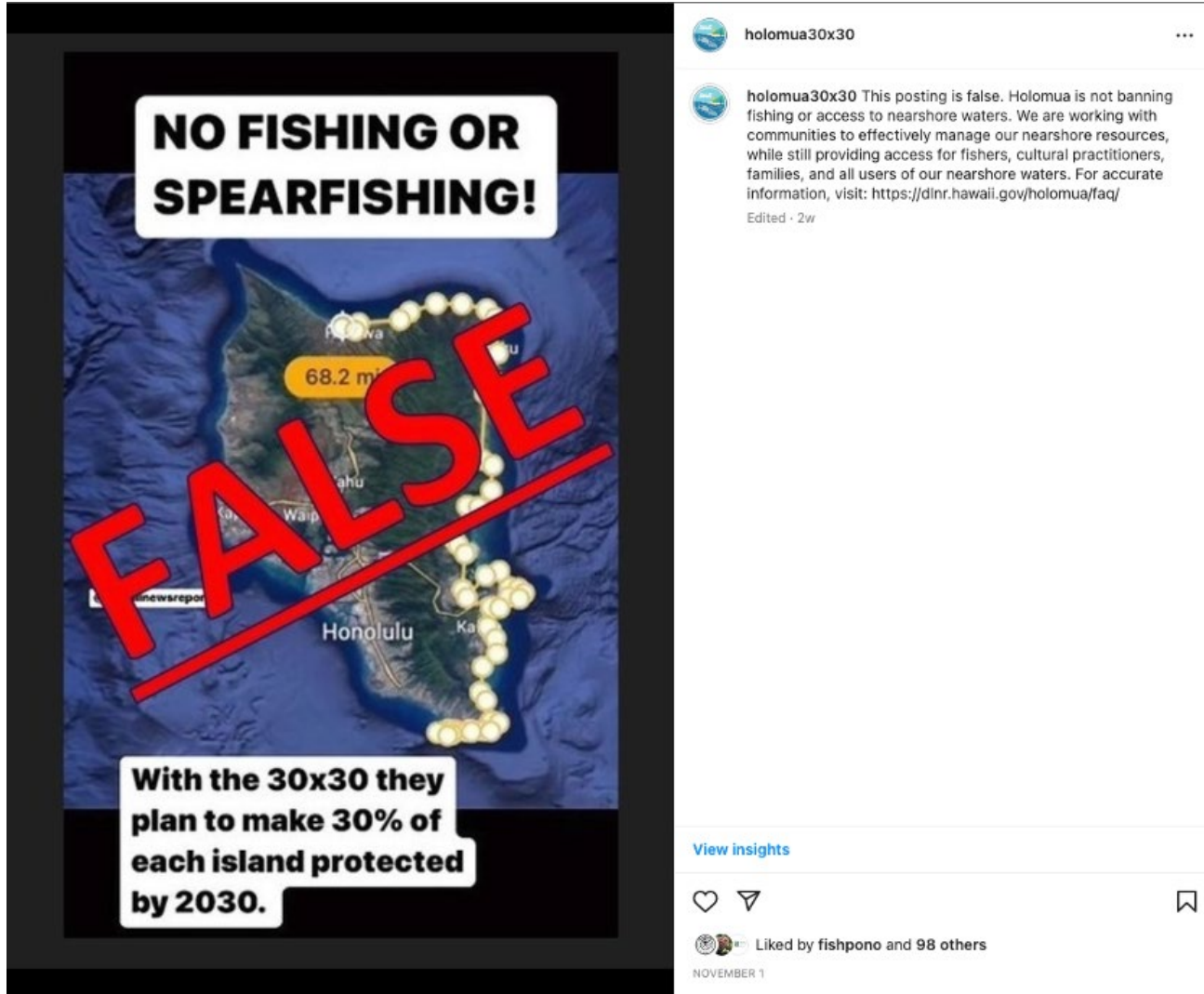
**WHEN:** Wednesday, November 16

**TIME:** 6:00 – 8:00 p.m.

**WHERE:** Wilcox Elementary School  
4319 Hardy Street, Lihue



# Misinformation on Social Media



**NO FISHING OR SPEARFISHING!**

**FALSE**

68.2 mi

Honolulu

**With the 30x30 they plan to make 30% of each island protected by 2030.**

**holomua30x30**

**holomua30x30** This posting is false. Holomua is not banning fishing or access to nearshore waters. We are working with communities to effectively manage our nearshore resources, while still providing access for fishers, cultural practitioners, families, and all users of our nearshore waters. For accurate information, visit: <https://dlnr.hawaii.gov/holomua/faq/>

Edited · 2w

[View insights](#)

Liked by fishpono and 98 others

NOVEMBER 1







# What We're Hearing from Fishers:

What about the other threats to our nearshore resources?

Sedimentation, pollution, sewage, water diversions

What about over-tourism?

What about enforcement?

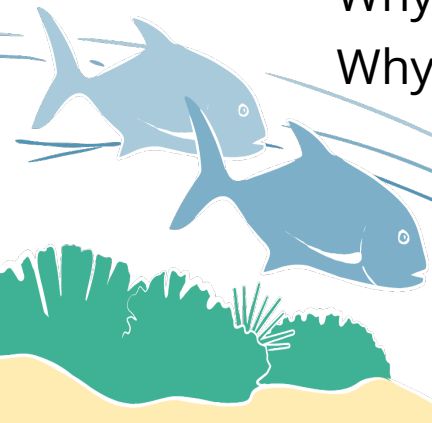
What about the limited fishing access?

Why "30 x 30" ?

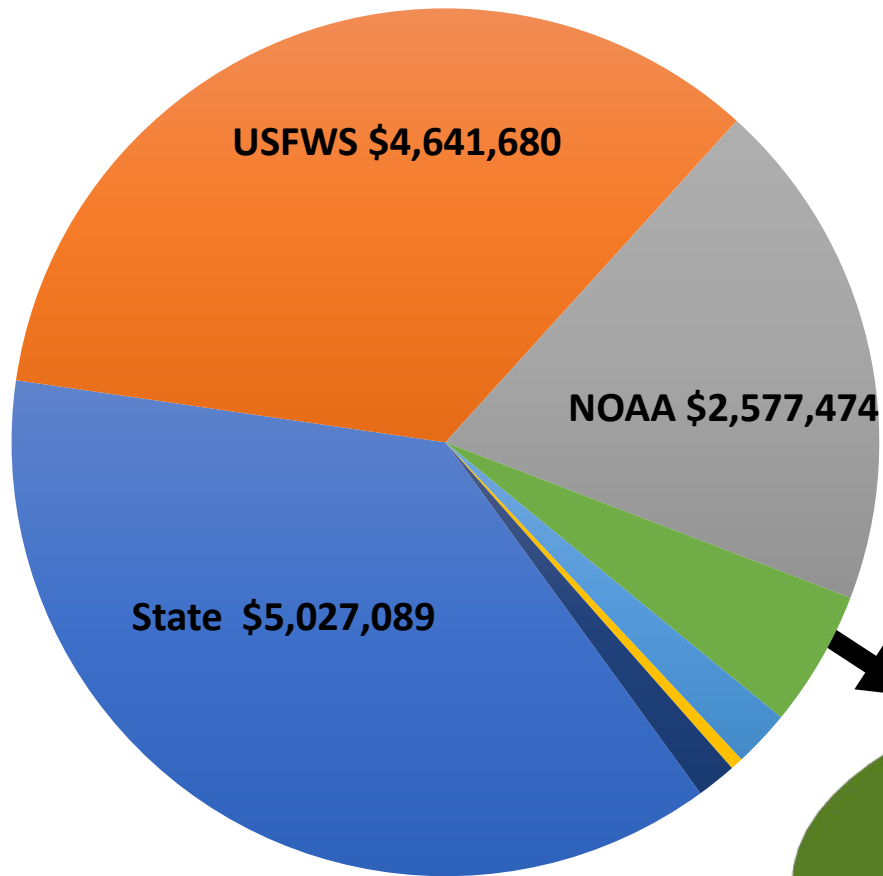
Why only 30% "effective management" Why Not 100%?

Why Marine Management Areas vs Island-wide vs State-wide?

Why not Artificial Reefs?

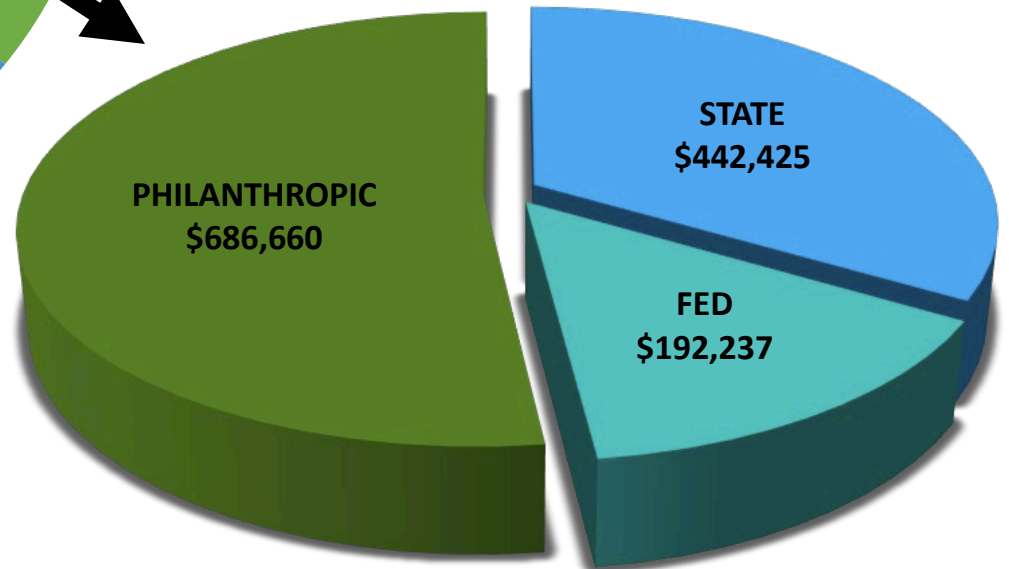


# Holomua Initiative Funding FY 22-23



DAR Total Budget

## Holomua Focused Funding





# Holomua Initiative Philanthropic Funding

*Hawai'i Community Foundation*

## MARINE 30X30 INITIATIVE



- MOU
- HCF Advisory Committee
  - *Made up of representatives in fields including marine science, conservation, community organizations, **fishers**, and cultural experts*
  - *Identify funding priorities that are best suited for philanthropic support to reach the goals of the Marine 30x30 Initiative*
- Funds DLNR, Community Groups, NGO's, Facilitators, Communications
- DAR Funding Supports: Contract planning staff, Makai Watch, Legal Fellows, Data Support, Travel Funds, Meeting Space Rentals, Print Materials and Supplies,





## LEARN MORE

Website:

<https://dlnr.hawaii.gov/holomua/>

To subscribe for updates:

<https://dlnr.hawaii.gov/holomua/sign-up-for-30x30-news/>

Key contacts:

Brian Neilson, DAR Administrator  
Luna Kekoa, DAR Program Manager  
Stacia Marcoux, MMA Biologist

