

JOSH GREEN, M.D.  
GOVERNOR  
KE KIA'ĀINA



KEITH A. REGAN  
COMPTROLLER  
KA LUNA HO'OMALU HANA LAULĀ

MEOH-LENG SILLIMAN  
DEPUTY COMPTROLLER  
KA HOPE LUNA HO'OMALU HANA LAULĀ

**STATE OF HAWAII | KA MOKU'ĀINA O HAWAII**  
**DEPARTMENT OF ACCOUNTING AND GENERAL SERVICES | KA 'OIHANA LOIHELU A LAWELAWE LAULĀ**  
P.O. BOX 119, HONOLULU, HAWAII 96810-0119

January 17, 2023

**VIA ELECTRONIC MAIL**

The Honorable Ronald D. Kouchi,  
President  
and Members of the Senate  
Thirty-Second State Legislature  
State Capitol, Room 409  
Honolulu, Hawaii 96813

The Honorable Scott K. Saiki, Speaker  
and Members of the House of  
Representatives  
Thirty-Second State Legislature  
State Capitol, Room 431  
Honolulu, Hawaii 96813

Dear President Kouchi, Speaker Saiki, and Members of the Legislature:

For your information and consideration, I am transmitting a copy of the Hawai'i State Foundation on Culture and the Arts, Annual Report for the period July 1, 2021 through June 30, 2022, as required by Section 9-3(8), Hawai'i Revised Statutes (HRS).

In accordance with Section 93-16, HRS, a copy of this report has been transmitted to the Legislative Reference Bureau and the report may be viewed electronically at:

<https://ags.hawaii.gov/reports/legislative-reports/>.

Sincerely,

A handwritten signature in blue ink, appearing to read "K. Regan".

KEITH A. REGAN  
Comptroller

Enclosure



# 2022 ANNUAL REPORT

---

State Foundation on Culture and the Arts



## BOARD OF COMMISSIONERS

---

*JULY 1, 2021 - JUNE 30, 2022*

**LLOYD UNEBASAMI** • Chairperson

**SUSAN BROWNE** • At-Large

**NALANI BRUN** • Kaua'i County

**JANE CLEMENT** • Hawai'i County

**KĀLEWA CORREA** • At-Large

**RONALD MICHIOKA** • City & County of Honolulu

**CLYDE SAKAMOTO** • Maui County

**KAREN TILLER POLIVKA** • At-Large

**ALLISON WONG** • At-Large



## **MISSION**

---

To promote, perpetuate, and preserve culture and the arts in Hawai'i.

## **VALUES**

---

1. We celebrate and emphasize the cultural richness and diversity of Hawai'i.
2. We believe in equitable access, transparency, and community-based decision making.
3. We share in the responsibility to perpetuate the Native Hawaiian culture and the arts.
4. We view art and cultural engagement as critical to the educational, economic, and social well-being of individuals, communities, and the state of Hawai'i.



# ABOUT THE SFCA

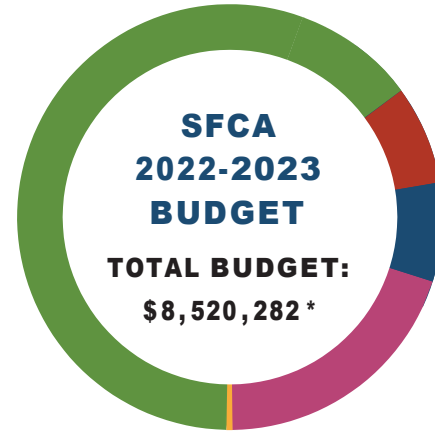
The Hawai'i State Foundation on Culture and the Arts (SFCA) is Hawaii's state government arts agency. Established in 1965 by the Hawai'i State Legislature, through the vision and effort of Hawai'i leaders including architect and State Planning Coordinator Alfred Pries, SFCA Founding Chairperson Masaru "Pundy" Yokouchi, State Senator Nadao Yoshinaga, and Governor John Burns. The creation of a state arts agency made Hawai'i eligible to receive federal grants from the National Endowment for the Arts (NEA), newly established on September 29, 1965. The SFCA is administratively attached to the Department of Accounting and General Services.

## WHAT IS A STATE ARTS AGENCY?

State arts agencies were created by legislatures and governors to promote the arts and reduce barriers to cultural participation. Every state and U.S. jurisdiction has a designated arts agency, providing grants, services, and leadership that make the arts accessible to everyone. State arts agencies help people and places to thrive by making our economy, our schools, our communities, and our connections with each other stronger through the arts.

State arts agencies are funded through appropriations from state legislatures. State arts agencies also receive 40% of the federal grant dollars Congress provides to the National Endowment for the Arts.

Learn more about state arts agencies and regional arts organizations nationwide on the National Assembly of State Arts Agencies website: [NASAA-Arts.org/state-arts-agencies](https://NASAA-Arts.org/state-arts-agencies).



\*Budget appropriation includes 7% total restriction on spending by administration and 20% legislative reduction.

### WORKS OF ARTS SPECIAL FUND APPROPRIATION

\$5,885,735 (65%)

### STATE GENERAL FUND

\$767,672 (9%)

### FEDERAL FUND

National Endowment for the Arts  
State Partnership Agreement

\$750,700 (9%)

### FEDERAL RELIEF FUND

National Endowment for the Arts  
American Rescue Plan Act

\$1,346,000 (16%)

### KING KAMEHAMEHA CELEBRATION COMMISSION TRUST FUND

\$70,175 (1%)



## SFCA PROGRAMS



### ART IN PUBLIC PLACES PROGRAM

Public Art Collection  
Hawai'i State Art Museum (HiSAM)

### GRANTS & PROGRAMS

Arts Education  
Community Arts  
Folk and Traditional Arts

### KING KAMEHAMEHA CELEBRATION COMMISSION

## STRATEGIC PRIORITIES AND VISION

### VISION

**WE ENVISION A THRIVING AND VIBRANT HAWAI'I ENRICHED BY CULTURE AND THE ARTS.**

The SFCA's goals are outlined in our current Strategic Plan which includes strategic priorities, vision, mission, and values. The plan is effective July 1, 2019 through June 30, 2023 as required by the agency's federal partnership with the National Endowment for the Arts. The priorities adopted are reflective of the input by the community, SFCA Commissioners and staff. In implementing the plan's priorities and accompanying strategies, SFCA intends to strengthen existing programs and services, pursue new initiatives, embrace a culture of transparency and accountability, as well as set and meet benchmarks that communicate our intentions clearly to our staff, partners, and the broader community.



### CULTURE

Support, foster and celebrate the artistic expressions of Hawaii's diverse cultures and communities.



### ENGAGEMENT

Enhance public engagement in culture and the arts.



### EDUCATION

Strengthen arts education for all learners.



### THE ARTS

Enrich the public sphere through the arts.



# ENRICHING THE PUBLIC SPHERE THROUGH THE ARTS

## 2022 STRATEGIC PLAN ACCOMPLISHMENTS

### CULTURE



- Increase acquisition of works of art by Native Hawaiian artists.
- Administer \$1,346,000 in Coronavirus State Fiscal Recovery Funds (CSFRF) of American Rescue Plan Act (ARPA) to Hawai'i Museum of Natural and Cultural History (Bishop Museum) and the State of Hawai'i Museum of Monarchy History ('Iolani Palace).

### ENGAGEMENT



- Develop support areas including web presence for King Kamehameha Celebration Commission, newly added to SFCA program structure in Fiscal Year 2022.
- Distribute \$144,500 American Rescue Plan Act (ARPA) to Individuals awards to 20 Individual Artists and Cultural Practitioners statewide for public impact projects.

### EDUCATION



- Restructure State Art Museum Education Program.
- Increase and diversify Teaching Artist Roster.
- Develop and launch Teaching Artist Mentorship Program.

### THE ARTS



- Host Honolulu Triennial Exhibition at the State Art Museum inclusive of exhibitions and pop-up chefs in the Café area at Hawai'i State Art Museum (HiSAM).
- Partner with community organizations to develop an augmented reality experience integrating works of art, culture, and history.



# STRATEGIC PLAN

## FISCAL YEAR 2023 GOALS

### CULTURE

- Share stories of Native Hawaiian creatives/practices/art through contemporary media.

### ENGAGEMENT

- Collaborate with community organizations across the state to develop the new SFCA Strategic Plan.

### EDUCATION

- Work with ARTS FIRST Partners to implement new core standards.

### THE ARTS

- Rebrand the HiSAM to increase public awareness and engagement in the arts.







# COMMUNITY MAHALO!

Community panelists make decisions at the SFCA regarding grants, artwork commissions, art acquisitions and judging student competitions. With the dedication and expertise of these volunteers, we make informed decisions that result in effective programming. Mahalo to all who participated in the decision making of the SFCA in Fiscal Year 2022.

## HAWAI‘I ISLAND

- Valerie Allen
- Dr. Lawrence Butler
- Larry Reitzer
- Judy Bisgard
- Kaholo Daguman
- Maja Grajski
- Carl Jennings
- Codie King
- Michael Marshall
- Fia Mattice
- Brenda McConnell
- Margo Ray
- Sherm Warner

## KAUA‘I

- Sally French
- Kloe Kang

## MAUI

- Leimomi Ah Sing
- Neida Bangerter
- Paul Janes-Brown
- Lana Coryell
- Jen Cox
- David Johnston
- Jennifer Owen
- Moira Pirsch
- Michael Takemoto
- Inger Tully

## MOLOK A‘I

- Raiatea Helm
- Alice Kaahanui

## O‘AHU

- Beth Iwata
- Michael Pili Pang
- Stacey Aldrich
- Christopher Au
- Mark Branner
- Drew Broderick
- Sean Browne
- Brandon Bunag
- Gaye Chan
- Eric Chang
- Dr. Taran Chun
- Stephanie Conching
- Deena Dray
- Rebecca Dunning
- Dr. Maria 'Nina' Guerrero
- Jaimey Hamilton
- Aly Ishikuni-Sasaki
- Denise Karabinus
- Wendy Kawabata
- Douglas Kaya
- Daniel Kelin
- Val Krohn-Ching
- Sarah Letarte
- Terry Liu

- Zoe Liu
- Katherine Love
- Antoinette Martin
- Patricia Massoth
- Martin John Kalani McMorrow
- Yoshimi Teh Soo Mei
- Ronald Michioka
- Rick Mills
- Michelle Morihara
- Deborah G. Nehmad
- Greg Northrup
- Andree Paradis
- Kamaka Pili
- Maya Portner
- Kristin Remington
- Aaron Salā
- Makanani Salā
- Terry Savage
- Amy Schiffner
- Hannah Shun
- Dr. Tim Slaughter
- Amanda Smith
- Maya Soetoro-Ng
- Jessica Stack
- Jill Weiner
- Randy Wong
- Allison Yanagi
- Maile Yawata



Exploring the Sculpture Garden at the State Art Museum through the “Imi Ā Loa’a” interactive experience. Supported in part by grant funding from the SFCA, the Honolulu Theatre for Youth’s “Imi Ā Loa’a” uses Augmented Reality, a walking tour, and digital gaming to engage people with art and history. Experience it yourself at the State Art Museum Sculpture Garden and borrow a tablet at the visitor’s desk! **Photo credit: Honolulu Theatre for Youth**

## WHY ENGAGEMENT MATTERS

**WE VIEW ART AND CULTURAL ENGAGEMENT AS CRITICAL TO THE EDUCATIONAL, ECONOMIC, AND SOCIAL WELL-BEING OF INDIVIDUALS, COMMUNITIES, AND THE STATE OF HAWAII’I.**

Through our programs, we encourage people to embrace creative expression as an integral part of life in Hawai’i. Engagement includes arts integration in school curriculums, such as SFCA’s Artists in the Schools residencies for grades K–12, interactive technology like SFCA partner Honolulu Theatre for Youth’s “Imi Ā Loa’a,” and community programs, like Hawaiian History Month programming supported in part by grant funding from the SFCA.



## 2022 COMMUNITY PROJECT HIGHLIGHTS

The SFCA has distributed \$759,500 to 41 Hawai'i arts and culture organizations and 20 individual arts/culture practitioners impacted by COVID-19. These American Rescue Plan (ARP) federal funds, provided by the National Endowment for the Arts (NEA), are designed to support the arts sector as it recovers from the devastating impact of COVID-19.

### ARTIST IN THE SCHOOL (AITS) HIGHLIGHTS

“This year, our resident teacher added a presentation of learning opportunity at the end of the residency. We invited artists and makers from our community to come and see the pieces. The students also invited their parents. The pride that the students felt, even if their piece was not quite complete, was evident.

A couple of our students are lobbying to establish this residency as a standing course offering in our course catalog. The students were articulate about the skills they learned through participation in this program and they feel that everyone should have the opportunity to take this residency as an elongated course offering. You know you have a successful residency when the students don't want to stop learning!”

— **TRACI SULLIVAN, MATH/SCIENCE TEACHER AT HAWAI'I TECHNOLOGY ACADEMY KAUA'I PCS (LĪHU'E, KAUA'I)**

“Students learned a way to see the world differently as they conducted their ethnographical interviews with family members and used this experience to write poetry. Students shared that they were grateful to have time with their families to sit down and hear their stories.”

— **ANN TANAKA, AP ENGLISH TEACHER AT JAMES CAMPBELL HIGH SCHOOL ('EWA BEACH, O'AHU)**



“Students were able to understand the connection between Hawaiian cultural values in relationship to our native ohia forest and explored artistic expressions that communicated their feelings about the effects of rapid ohia death. Students found a creative approach to writing, various modes of expression, and multiple pathways of understanding of our environment and Hawaiian culture. In addition to the visual art projects, 3rd and 4th graders learned a Hawaiian mele “E Ala E Na Mamo E” to capture the importance of working together to meet challenges and to honor our ancestors of the past to move toward a better future. Environmental and cultural empathy became apparent among students. The artistic process truly allowed students to connect with ohia on a personal level.”

— **STEPHAN SHEPHERD, TEACHER AT HŌLUALOA ELEMENTARY SCHOOL  
(KONA, HAWAI‘I ISLAND)**

## 175TH ANNIVERSARY OF WASHINGTON PLACE TASK FORCE

The SFCA participated in the 175th Anniversary Host Committee with funding support of the exhibit, booklet, and television broadcast.

## CORONAVIRUS STATE FISCAL RECOVERY FUNDS (CSFRF)

### \$1,346,000 FUNDS FOR THE BERNICE PAUHI BISHOP MUSEUM AND THE FRIENDS OF IOLANI PALACE

Contracts were issued in support of Cultural Preservation at the State of Hawai‘i Museum of Natural and Cultural History (Bishop Museum) and the State of Hawai‘i Museum of Monarchy History (‘Iolani Palace). Preserving and protecting the irreplaceable cultural resource collections of these State cultural institutions includes costly electrical bills and proper staffing.

## AMERICAN RESCUE PLAN ACT (ARPA) GRANTS

### \$759,500 DISTRIBUTED TO ORGANIZATIONS IN ARPA GRANTS

The SFCA distributed \$759,500 to 41 Hawai‘i arts and culture organizations and 20 individual arts/culture practitioners impacted by COVID-19. These ARP federal funds, provided by the NEA, were designed to support the arts sector as it recovers from the devastating impact of COVID-19.



Visitors walking into Washington Place. **Photo credit: SFCA**



Bishop Museum visitors learning how to make kapa cloth.

Photo credit: Bishop Museum

“The SFCA ARP Recovery Grant funding allowed us to share unique cultural arts methods and applications like weaving lau hala, making a fishnet and learning how to throw it, and the process of making and stamping kapa cloth. Opportunities for visitors to see these traditional practices are rare; even rarer is having hands-on experience learning the practice or art form. The Living Culture Program Series is impactful in sustaining these traditional practices and sharing this important cultural knowledge. The benefit of personal interaction with practitioners is not limited to a first-time introduction to an activity. It is an opportunity for those who have a depth of cultural knowledge and experience to share what has been given to them with others.”

— BERNICE PAUHI BISHOP MUSEUM

## BIENNIUM GRANT HIGHLIGHTS

Biennium Grants provides funding for organizations who support programs and projects that advance the arts, culture, and creativity in the lives of the people of Hawai‘i. Funds are distributed through the State to nonprofit organizations offering culture and arts programs, many of which reach the neighbor islands and underserved and rural areas. See pages 34–35 for a full list of grantees and projects.

## HAWAII INSTITUTE FOR MUSIC ENRICHMENT AND LEARNING EXPERIENCES (HIMELE)

Livestream Steel Guitar Saturdays featured popular Hawaiian steel guitarists including Alan Akaka, Greg Sardinha, Bobby Ingano, Paul Kim, Kaipo Asing, Helene Woodward, Gary Aiko, Eric Keawe, Pomaika‘i Keawe, Momi Bee Kahawaiola‘a, and Jeremy “Kama” Hopkins.

The livestream Kanikapila provided the viewing audience the chance to play along with the musicians or enjoy the

all-star band performances. The Kanikapila also traveled to Moloka‘i and featured Moloka‘i Hui musicians Sterling Kalua, Kevin Hallinan, Fred Reyes, Uncle Benny de Luna, Kini Christie, Jeff Ballard, and Molokai steel guitarist Victor Patron, and Alan Akaka, Kapono Lopes, Mālie Lyman, Pomaika‘i Keawe, and Helene Woodward.

The live stream Open Stage invited viewers from all over the world to submit steel guitar performance videos for broadcast. Steel guitarists submitted performances from Hawai‘i, the Continental US, Japan, England, Australia, Spain, and Sweden.



Bobby Ingano playing steel guitar during a HIMELE Steel Guitar Saturday. Photo credit: HIMELE



HOT Opera Residency Program. Photo credit: HOT

The Hawai'i Opera Theatre (HOT) Opera Residency Program worked with four different schools. The residency program has several different variations which include a “create your own opera” project, a traditional residency using a work from our custom library of operas intended for performance by children, and special projects.

- Students at **Blanche Pope Elementary** worked with the HOT Education Department to create their own opera. They created a story based off another story of old Waimānalo (where the school is located). They used the mural painted on the side of their building to help build their opera.
- **He'eia Elementary** created an opera based off Hawaiian marsh birds.
- **Waikele Elementary** used their location of Waipahu for inspiration, while **Pālolo Elementary** created an opera titled “Superheroes of the South Pacific.”

All these projects culminated in a performance for their peers and the community.

## SOUNDING JOY MUSIC THERAPY

### MUSIC FOR LIFELONG RESILIENCE: ENGAGING OLDER ADULTS THROUGH MUSIC THERAPY

Sounding Joy's Arts and Healing project provided weekly music therapy to enhance well-being and quality of life for 560 older adults on Hawai'i Island, Maui, and O'ahu, in collaboration with a variety of community organizations, including the Hawai'i Parkinson Association, Alzheimer's Association — Aloha Chapter, Hawai'i Pacific Neuroscience, Waimānalo Health Center, Hawai'i Kai Retirement Center, Kīnā 'Ole Estate, and Mānoa Cottage Care Homes. Sounding Joy Music Therapy prioritized services to older adults with disabilities and those in financial need, whose access to therapy would otherwise be limited.

## STATEWIDE CULTURAL EXTENSION PROGRAM (SCEP)

The SFCA contract with the University of Hawai'i—Mānoa Outreach College's SCEP provides statewide access to arts and culture presentation through public libraries, senior centers, public housing communities, and online. In Fiscal Year 2022, these performances reached 6,435 people across the State.





# ARTS EDUCATION

## ARTS INTEGRATION GETS STUDENTS EXCITED ABOUT LEARNING

“Using drama as a way of teaching early Hawaiian migration and society was an especially beneficial, effective, and fun approach for our high English Language Learner student population to learn. Through role-play or acting scenes out, students engaged with content on a deeper, emotional, visceral level. When my class traveled to Hawai’i from Tahiti (pretending and acting), the students really began to understand the danger of such a long-distance voyage, and the skill necessary to the navigate 2,500 miles of open ocean!”

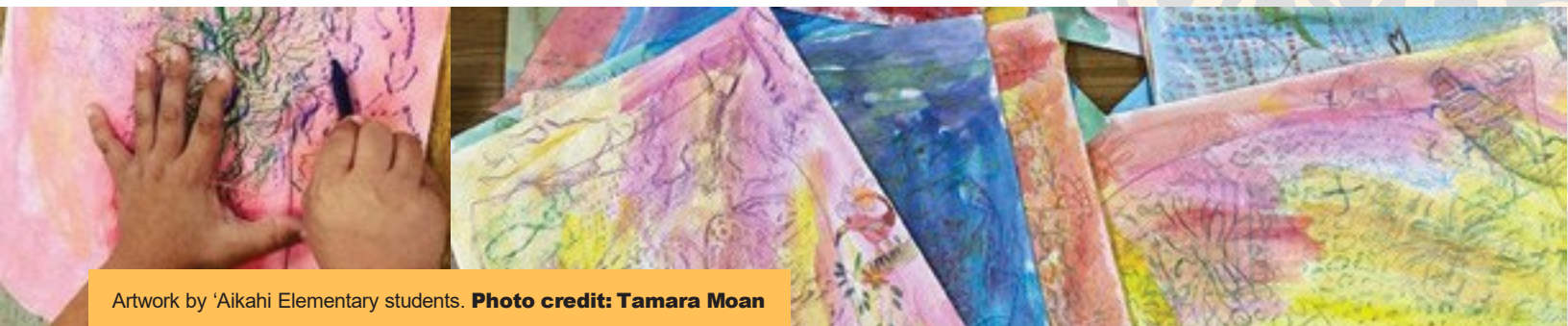
— DOE GRADE 4 TEACHER REFLECTING ON THE SFCA AITS ARTIST RESIDENCY

## ARTS EDUCATION PROVIDES SKILLS VITAL TO 21ST-CENTURY SUCCESS

“Critical thinking, creative problem-solving, collaboration, communication, and information literacy. In a global economy driven by knowledge and ideas, arts education is a necessity. The best-paying jobs require workers with creativity and higher-order thinking and communication skills, and companies are increasingly looking for these qualities in the workers they recruit. In studying the arts, students hone their perceptual, analytic, and interpretive skills while developing creative thinking, communications, and problem-solving abilities. Additionally, 74% of educators say that the risk of job automation is lower in professions that require creative problem-solving skills.”

– NATIONAL ASSEMBLY OF STATE ARTS AGENCIES, “ARTS EDUCATION PROVIDES SKILLS CRITICAL TO 21ST CENTURY SUCCESS” <sup>1</sup>

<sup>1</sup> National Assembly of State Arts Agencies, Arts Education Provides Skills Critical to 21st century success <https://nasaa-arts.org/communication/arts-education-provides-skills-critical-to-21st-century-success/>.



Artwork by 'Aikahi Elementary students. Photo credit: Tamara Moan



SFCA's Arts Education programs engage participants in the artistic processes of C.P.R.C:

- **CREATING** (making art)
- **PERFORMING/PRESENTING** (sharing our art with others)
- **RESPONDING** (thinking/reflecting about art)
- **CONNECTING** (relating ideas and works with context to deepen understanding)

These are the anchors of the National Core Arts Standards, a process that guides educators in providing a unified quality arts education for students pre-K through high school. In 2022, the Hawai'i State Department of Education adopted the National Core Arts Standards with encouragement from the ARTS FIRST Partnership (page 24). Learn more about the National Core Arts Standards at [NationalArtsStandards.org](https://NationalArtsStandards.org).



Pālolo Elementary students during an AITS arts residency session. **Photo credit: Monica Garrett**



Child rolling out clay during a Super Saturday at the State Art Museum. **Photo credit: Brandyn Liu**



Hāna School 7th grade student learning nature journaling and observational drawing during an AITS residency by Artistic Teaching Partners (ATP) Maggie Sutrov, integrating art into a science class. **Photo credit: Maggie Sutrov**





## ARTS EDUCATION ENGAGES STUDENTS IN SCHOOL

Students are more likely to participate in arts and arts integrated classes, and have higher attendance than classes where the arts are absent.<sup>1</sup>

“A couple of our students are lobbying to establish this residency as a standing course offering in our course catalog. The students were articulate about the skills they learned through participation in this program and they feel that everyone should have the opportunity to take this residency. You know you have a successful residency when the students don't want to stop learning!”

— HAWAI'I TECHNOLOGY ACADEMY KAUAI PUBLIC CHARTER SCHOOL  
CLASSROOM TEACHER, REFLECTING ON THE SFCA AITS RESIDENCY

## ARTS EDUCATION HELPS CLOSE ACHIEVEMENT GAPS FOR DISADVANTAGED STUDENTS

Research confirms that students from low-income families, English language learners, and students with special needs all do better in arts-infused schools than in schools that do not have robust arts programming as a meaningful part of the curriculum.<sup>2</sup>

The SFCA provides various arts education programs and opportunities to the State of Hawai'i Department of Education public and charter schools:

- AITS artist residencies for grades K–12, statewide
- Art Bento Museum Education activities at HiSAM for grades 2–6, O'ahu
- Student exhibitions at HiSAM for grades K–12, statewide
- Poetry Out Loud national poetry recitation competition for grades 9–12, statewide
- Biennium grants to organizations for arts education for grades pre-K–12, statewide

<sup>1</sup>Arts Education Partnership, Preparing Students for the Next America: The Benefits of an Arts Education, April 2013. [www.aep-arts.org/wp-content/uploads/Preparing-Students-for-the-Next-America\\_The-Benefits-of-an-Arts-Education.pdf](http://www.aep-arts.org/wp-content/uploads/Preparing-Students-for-the-Next-America_The-Benefits-of-an-Arts-Education.pdf).

<sup>2</sup>National Endowment for the Arts, The Arts and Achievement in At-Risk Youth: Findings from Four Longitudinal Studies, March 2012. <https://www.arts.gov/sites/default/files/Arts-At-Risk-Youth.pdf>.



## ARTISTIC TEACHING PARTNERS (ATP)

The SFCA's roster of ATP provides schools with highly qualified teaching artists. The ATP stay current with best arts education practices through ongoing training and professional development.

In 2022, 9 of 18 new teaching artists on the roster took part in an Emerging Teaching Artist Program. This program partnered Veteran Teaching Artists with Emerging Teaching Artists, to one-on-one support for curriculum development, lesson planning, and grant writing for their first year on the roster.

“The first adjustment for me was teaching a class in such a short time period. I had taught for 1-3 hours in a museum setting. Managing to complete everything within the 45-minute timetable felt more challenging. [The mentor's] feedback helped me best identify which parts of the lesson I should simplify and how to stagger the steps of the artmaking process to keep students engaged.”

— EMERGING TEACHING ARTIST, REFLECTING ON THE PROGRAM

## THE ARTS PREPARE STUDENTS FOR SUCCESS IN WORK

“Arts education develops thinking skills and capacities key to success in the 21st-century workforce. Arts education equips students to be creative, strengthens problem solving ability, builds collaboration and communication skills, and increases capacity for leadership.”<sup>1</sup>

<sup>1</sup> Arts Education Partnership, *Preparing Students for the Next America: The Benefits of an Arts Education*, April 2013. [https://www.aep-arts.org/wp-content/uploads/Preparing-Students-for-the-Next-America\\_The-Benefits-of-an-Arts-Education.pdf](https://www.aep-arts.org/wp-content/uploads/Preparing-Students-for-the-Next-America_The-Benefits-of-an-Arts-Education.pdf).



Museum visitors participating in free art activities inspired by artworks in the SFCA Art in Public Places (APP) Collection and guided by SFCA ATP Monica Garrett. **Photo credit: SFCA**



# STATE POET LAUREATE

The Hawai'i State Poet Laureate program has launched! Congratulations to Hawai'i State Poet Laureate Brandy Nālani McDougall, selected by a committee. Brandy is an accomplished Hawai'i based poet who will help activate poetry in the community throughout the state of Hawai'i for three years. This fellowship will award \$20,000 per year.

The program was initiated by the Hawai'i Council for the Humanities, who reached out to SFCA and began a dialogue of monthly meetings that included the State Librarian and others in the community to build the platform of the poet laureate. The group then reached out to Senator Brian Taniguchi to include his input. A committee brought the program to the attention of the state legislature via the concurrent resolution. Learn more about resolutions on the Legislative Reference Bureau (LRB) website: [LRB.Hawaii.gov/PAR/overview-of-the-legislative-process](http://LRB.Hawaii.gov/PAR/overview-of-the-legislative-process).



Hawai'i State Poet Laureate Brandy Nālani McDougall. **Photo courtesy of the author**

“Poetry has a unique contribution to make to our society — strengthening civic voice, empathy, and understanding, expanding our hearts. A State Poet Laureate Program will encourage and value poetry in our many communities and help to make poetry feel like it truly belongs to everyone as a powerful mode of expression, connection, and enriching way of life.”

— AIKO YAMASHIRO, EXECUTIVE DIRECTOR, HAWAI'I COUNCIL FOR THE HUMANITIES

Learn more on our website: [SFCA.Hawaii.gov/PL](http://SFCA.Hawaii.gov/PL).





In 2022, two Jun Kaneko sculptures from the Art in Public Places Collection were placed at Richards St. entrance to No. 1 Capitol District building, home to the State Art Museum. **Photo credit: Brandyn Liu**

## ART IN PUBLIC PLACES PROGRAM

### ART IN PUBLIC PLACES (APP) PROGRAM OBJECTIVES

The objectives of the APP Program are:

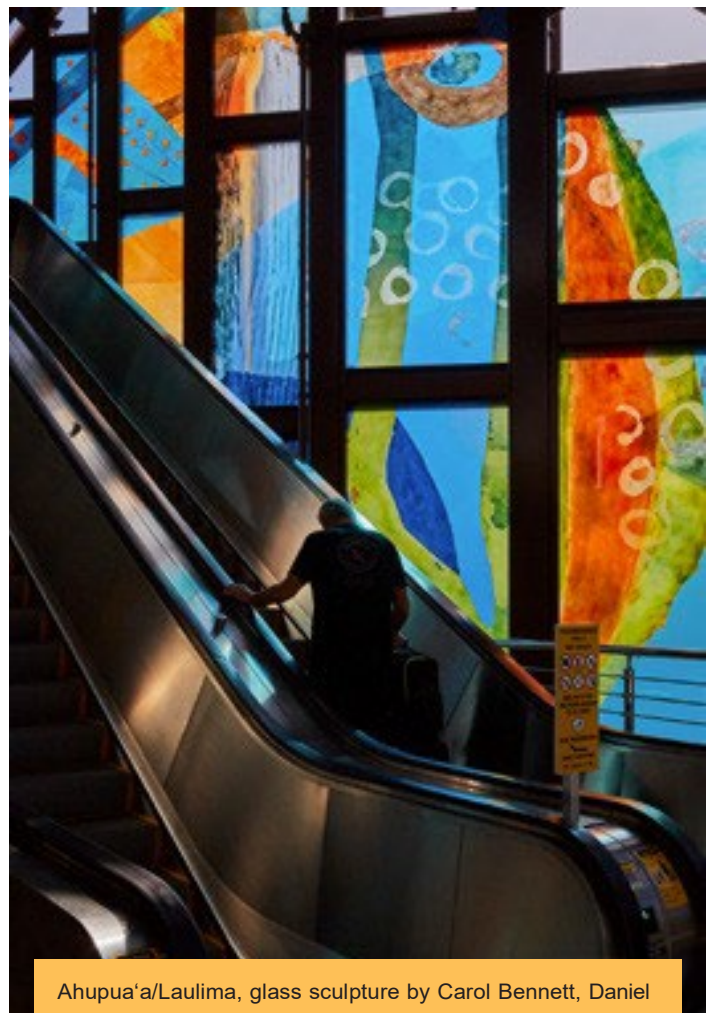
- To enhance the environmental quality of public buildings and spaces throughout the state for the enjoyment and enrichment of the public.
- To cultivate the public's awareness of visual arts in all media, styles, and techniques.
- To contribute to the development and recognition of a professional artistic community.
- And to acquire, interpret, preserve, and display works of art expressive of the Hawaiian Islands, the multicultural heritages of its people, and the creative interests of its artists.



### APP COMMISSIONED WORKS OF ART

The state of Hawai'i opened the Consolidated Rent-A Car (Conrac) Facility at the Daniel K. Inouye International Airport on Wednesday December 1, 2021. In addition to being the new location for rental cars, the facility features a striking glass art installation, "Ahupua'a/Laulima" by Kaua'i artist Carol Bennett. The artwork includes a series of two-story tall art glass panels depicting abstract images inspired by Hawaiian land divisions. From waterfalls and kī leaves to sea urchin and fish patterns, the vibrant colors serve as a grand welcome for visitors to O'ahu.

An Art Advisory Committee (AAC) is convened for each building or space selected for a permanent work of art. The AAC participates in every phase of discussion to ensure the work of art is relevant and accessible to the community where it is placed.



Ahupua'a/Laulima, glass sculpture by Carol Bennett, Daniel K. Inouye International Airport. **Photo credit: Linn Morris**



## ART IN PUBLIC PLACES — PUBLIC ART COLLECTION

The SFCA APP Collection has nearly 7,000 works of art, over 65% of which is currently on display statewide in over 500 state government sites including public schools, libraries, airports, hospitals, State office buildings, and HiSAM. The collection is managed by the SFCA for accountability, accessibility, preservation, and appropriate use.

Please see Appendix A, APP (page 30) for details on Fiscal Year 2022 purchases and gifts.

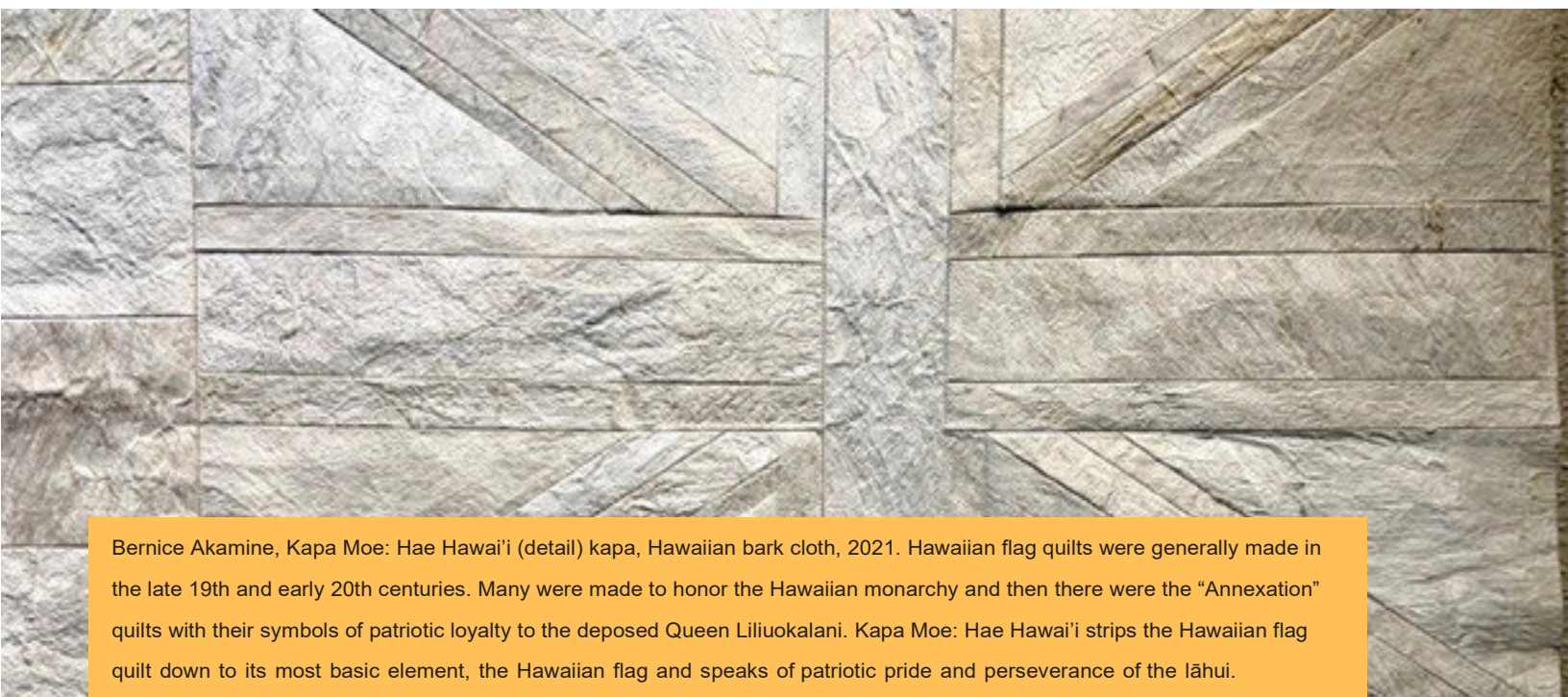
### ART AT THE CAPITOL

Art at the Capitol invites the public to visit Capitol building offices and spaces to view and learn more about the SFCA APP Collection artworks installed there. This year, Art at the Capitol returned as an in-person evening event after two years of online-only content. Youth from Ballet Hawai'i and the Honolulu Symphony for Youth performed live in the rotunda. This year, 35 legislative offices participated.

SFCA hosted a hands-on art making workshop with legislators and legislative staff. SFCA has hosted these workshops for the past few years as an opportunity for legislators to experience the high-quality arts education programs SFCA provides to Hawai'i public and charter school students and teachers. This year's workshop was "Poetic Self Portrait as Fresh Water" with SFCA ATP Laurel Nakanishi, combining image making with poetry writing.

### NATIVE HAWAIIAN ART

The SFCA supports the acquisition and creation of Native Hawaiian art through a variety of programs including the APP program. For a detailed report relating to expenditures for the curation and preservation of Native Hawaiian art go to [sfca.hawaii.gov](https://sfca.hawaii.gov).



Bernice Akamine, Kapa Moe: Hae Hawai'i (detail) kapa, Hawaiian bark cloth, 2021. Hawaiian flag quilts were generally made in the late 19th and early 20th centuries. Many were made to honor the Hawaiian monarchy and then there were the "Annexation" quilts with their symbols of patriotic loyalty to the deposed Queen Liliuokalani. Kapa Moe: Hae Hawai'i strips the Hawaiian flag quilt down to its most basic element, the Hawaiian flag and speaks of patriotic pride and perseverance of the lāhui.

## STATE ART MUSEUM

The State Art Museum is a powerful tool to maximize public art access and promote lifelong learning, and an educational teaching tool for students, teachers, visitors and the public. Supported by the Works of Art Special Fund, the museum is free for everyone and open Monday – Saturday 10 am – 4 pm, with evening hours during special museum events. Learn more about the museum online:

[SFCA.Hawaii.gov/hisam](https://www.sfca.hawaii.gov/hisam).

### 2022 EXHIBITS HAWAI‘I TRIENNIAL

February 18 – December 3, 2022. Hawai‘i Triennial 2022 (HT22) was framed around the fluid concept of Pacific Century — E Ho‘omau no Moananuiākea, interweaving themes of history, place, and identity within the context of Hawaii's unique location at the confluence of Asia-Pacific and Oceania. The citywide exhibition was open February 18 – May 8, 2022; the exhibit at the State Art Museum was both expanded and extended to December 3, 2022, in partnership with Hawai‘i Contemporary, a Honolulu-based nonprofit organization.

### 59TH ANNUAL HAWAI‘I REGIONAL SCHOLASTIC ART AWARDS EXHIBITION — GRADES 7-12

February 18 – March 12, 2022. Gold and Silver Key award-winning artworks, selected by a panel of judges from the Hawai‘i arts community. Top award winners continue on to the national level competition. In the Expanded Projects category for the Hawai‘i Regional Scholastic Art Awards competition this year, the Kamehameha Schools Kapālama Mural Club created the “Hawaiian Renaissance” mural on their upper campus. The work honors leaders and activists throughout Hawaii's history and how these moments emulated principles of aloha ‘āina. Twenty students collaborated under the guidance of educator Boz Schurr. The mural received a Gold Key award.

The expanded projects category in the Scholastic Art Awards is for community projects, site-specific installations, and research-driven processes.

A virtual tour of the exhibit (and other past exhibits) can be explored on the State Art Museum website: [hisam.hawaii.gov/exhibits/virtual-tours](https://www.hisam.hawaii.gov/exhibits/virtual-tours).





## 2022 YOUNG ARTISTS OF HAWAI‘I — GRADES K–6

May 14 – June 25, 2022 at the State Art Museum and August 2022 – March 2023 at the Hawai‘i Convention Center. 2022 theme: “What does good leadership look like?” Presented by the SFCA, the Hawai‘i Tourism Authority, and The Native Imaginative, this program recognizes creative excellence among Hawaii’s K–6 students. A panel of judges select 96 works for the exhibition. Mahalo nui to 2022 judges Kamaka Pili, Raiatea Helm, and Makanani Salā.

As a part of the SFCA’s Art in Public Places Program, the intention of the State Art Museum is to explore creative and dynamic ways to support artists and their diverse art forms. This is accomplished through public programming, museum education, and the engagement of students. We are continuously evolving in becoming even more inclusionary and accessible to the needs of our community, as a welcoming space for creatives to collaborate, share and encourage one another in the arts.

Visitors to HiSAM are now greeted by a friendly face! A group of interpretive guides are present on both the first and second floors to aid in the visitor experience.

## COLLABORATION WITH THE HONOLULU MAYORS OFFICE ON CULTURE AND THE ARTS (MOCA)

### PĀ‘INA PŌ‘ALIMA

As a partnership with the Honolulu MOCA, the Pā‘ina Pō‘alima events began in the Spring of 2022. These dynamic evenings are filled with food and entertainment from our ‘aiga (family) Pasifika to celebrate Pacific Islander performances, artful expressions, and cultures.

## “DEAR SAUMOLIA”

Emerging Hawai‘i artist Saumolia Puapuaga participated in a Friends of HiSAM residency in the “Passion on Display” (POD) space (previously filled by the State Art Museum gift shop). Saumolia activated the space by:

- Inviting underserved communities to HiSAM and hosting their visits to the POD,
- Creating commissioned work in the space for a collector in Austin, Texas (pictured below),
- And making connections for gallery representation in Santa Fe, New Mexico.

“Dear Saumolia” is a series of paintings to my younger self and current self: celebrating the innocence of my childhood, addressing the insecurities of my past/present, and expressing the triumphs of self-love and happiness through inclusivity. Throughout the month of October, I intend to share the space with other queer artists to celebrate our identity through fellowship.



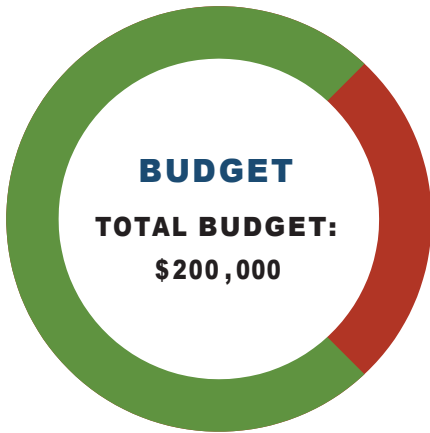


# KING KAMEHA MEHA CELEBRATION COMMISSION

On December 22, 1871, King Kamehameha V proclaimed a national holiday to honor and celebrate his grandfather and the father of the Hawaiian Kingdom. Originally, the people of Hawai'i wanted to mark the legacy of Lot Kapūaiwa (Kamehameha V) on his birthday, December 11. Being the humble chief that he was, he opted to honor his grandfather instead and pushed the holiday as far away from his (Lot's) birthday as possible, hence the arbitrary date of June 11. Thus, June 11, 1872, was the very first Kamehameha Day holiday ever celebrated.



Hawaiian flags held high during a King Kamehameha Celebration Floral Parade. **Photo credit: King Kamehameha Celebration Commission**



**HAWAII TOURISM AUTHORITY**  
Community Enrichment Program  
\$150,000 (75%)

**STATE FOUNDATION ON CULTURE  
AND THE ARTS**  
Art in Public Places (APP) Program  
\$50,000 (25%)

## 2022 KING KAMEHA MEHA DAY CELEBRATION

Sixteen official events were held on Hawai'i Island, Kaua'i, Maui, Moloka'i, and O'ahu from June 3 – June 18, 2022.

Special sections created for each island's newspapers (Hawai'i Tribune Herald, West Hawai'i Today, The Garden Island, and the Honolulu Star-Advertiser).

A list of official events on Hawai'i Island, Kaua'i, Maui, Moloka'i, and O'ahu is posted online at [KamehamehaDay.Hawaii.gov](https://www.kamehamehaday.hawaii.gov).



## 2022 COMMUNITY ENGAGEMENT — ABCMOUSE HOMESCHOOL CURRICULUM

The King Kamehameha Celebration Commission partnered with ABCmouse.com Online Curriculum to create programming featuring King Kamehameha Day. The ABCmouse organization provides supplemental Homeschool Curriculum with reading, writing, counting including puzzles, books, videos and more in a child-safe online curriculum. As of September 2022, the videos “What is Kamehameha Day?” and “Nanea and Leilani” had over 99,000 and 88,900 views, respectively.

## ART IN PUBLIC PLACES

Interaction with the King Kamehameha I statues in Honolulu, Hilo, and Kona.



King Kamehameha I statue in Honolulu adorned with lei.

**Photo credit: King Kamehameha Celebration Commission**

## STAY IN TOUCH!

Website: [KamehamehaDay.Hawaii.gov](http://KamehamehaDay.Hawaii.gov)

Email: [KKCC@hawaii.gov](mailto:KKCC@hawaii.gov)

Telephone: (808) 586-0333

Facebook: [@KingKamehamehaCelebration](https://www.facebook.com/KingKamehamehaCelebration)

Instagram: [@KingKamehamehaCelebration](https://www.instagram.com/KingKamehamehaCelebration)

## BOARD OF COMMISSIONERS

- Royal Order of Kamehameha I: Kainoa Daines, Chair
- ‘Ahahui Ka’ahumanu: Louise Alina
- Hale O Nā Ali‘i: Ian Custino, Vice Chair
- Daughters & Sons of Hawaiian Warriors, Māmakakaua: Puake‘ala Mann
- Daughters of Hawai‘i: Kehaulani Keana‘aina
- Association of Hawaiian Civic Clubs: Shelley Kēhaulani Pe‘a
- Kamehameha Schools Alumni Association: Napu‘unoa Crabbe
- Kapahulu Music Club: Kimo Keaulana
- Waimānalo Hawaiian Homestead Association: Vacant
- Papakōlea Community Association: Vacant
- Island of Hawai‘i: Desiree Moana Cruz
- Island of Maui: Moani Whittle-Wagner
- Island of Kaua‘i: Lyah Kama-Drake
- Island of Moloka‘i: Vacant
- Island of Lāna‘i: Vacant
- Amy Hammond, Executive Director



Pā‘ū riders from Maui in the King Kamehameha Celebration Floral Parade (2014). **Photo credit: King Kamehameha Celebration Commission**



## ARTS FIRST PARTNERS

The Hawai'i State Legislature enacted ACT 80 in 1999 which called for Hawaii's major stakeholders in arts education to revise the State's Fine Arts standards and develop a statewide Strategic Plan for Arts Education. In 2001, ACT 306/01 passed into law (SFCA's HRS Chapter 9) formally naming the ARTS FIRST Partners and mandating the implementation of the Strategic Plan.

This year, the ARTS FIRST Partners assisted in the Board of Education's adoption of the National Core Arts Standards. Since the adoption, various partners are assisting in the implementation and rollout phase of the standards, which will occur over the next 3 years (2022–2025).

In addition, various organizations within ARTS FIRST supported Professional Development for teachers, teaching artists and community members. Several sessions had a focus on culturally responsive and sustaining teaching methods. Professional Development this year was held online and in person on islands including Maui, Hawai'i Island, and O'ahu.





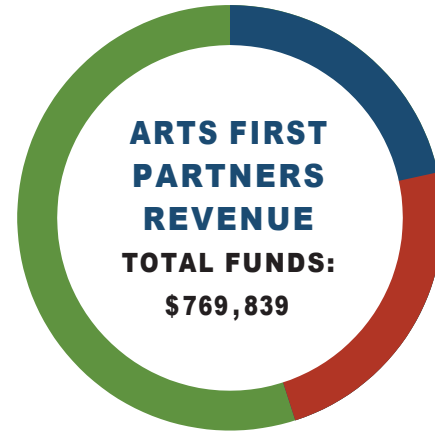
## ARTS FIRST PARTNERS 2021-2015 STRATEGIC PLAN MISSION AND VISION

**MISSION:** To collectively advance diverse, equitable and quality arts education in Hawai'i through advocacy and access.

**VISION:** A vibrant, arts-enriched learning culture in which

- Arts are diverse, equitable, and inclusive;
- The Arts are subjects in schools as well as integrated throughout subjects in schools;
- Arts support community, community supports arts.

ARTS FIRST Partners includes the State of Hawai'i Department of Education; Hawai'i Association of Independent Schools; College of Arts and Humanities—University of Hawai'i—Mānoa; College of Education—University of Hawai'i—Mānoa (UHM COE); Hawai'i State Foundation on Culture and the Arts (SFCA); Hawai'i Arts Alliance; Holualoa Foundation for Arts and Culture (Donkey Mill Art Center); Honolulu Theatre for Youth; Maui Arts & Cultural Center; Molokai Arts Center. Any not-for-profit arts education focused organization in Hawai'i is welcome to attend meetings.



### STATE AND COUNTY FUNDS

\$429,900 (56%)

### FEDERAL FUNDS

\$171,800 (22%)

### PRIVATE FUNDS

\$168,139 (22%)



# SFCA FINANCIAL SUMMARY

Department of Accounting and General Services, State of Hawai'i.

**Fiscal Year Ended June 30, 2022**

## REVENUES

### STATE

Executive Allotment.....	\$825,454.00
Works of Art Special Fund (Expenditure Ceiling).....	\$5,585,735.00
Works of Art Capital Improvement Project Fund.....	\$33,566.28
<b>SUBTOTAL.....</b>	<b>\$6,444,755.28</b>

### FEDERAL

National Endowment for the Arts — State Partnership Agreement.....	\$750,700.00
American Relief Fund — American Rescue Plan Act.....	\$1,346,000.00
<b>SUBTOTAL.....</b>	<b>\$2,096,700.00</b>

### PRIVATE CONTRIBUTORS

Carryover from Previous Year.....	\$108,114.39
Hawai'i Community Foundation Donation to Artists in the School.....	\$3,000.00
Private Donation for Hawai'i State Art Museum.....	\$1,600.00
Investment Pool Earnings/pCard Rebate.....	\$1,202.06
<b>SUBTOTAL.....</b>	<b>\$113,916.45</b>

**TOTAL REVENUES ..... \$8,655,371.73**



## EXPENSES

### SFCA ADMINISTRATION ..... \$814,239.86

Personnel .....	\$450,204.18
Operating .....	\$364,035.68

### PROGRAM GRANTS ..... \$2,039,736.32

State .....	\$378,717.07
Federal — National Endowment for the Arts .....	\$315,019.25
Basic State Plan .....	\$156,019.25
Arts in Education .....	\$34,800.00
Underserved Communities .....	\$84,200.00
Poetry Out Loud .....	\$20,000.00
Folk Arts Partnership .....	\$20,000.00
Federal Relief Fund — American Rescue Plan Act .....	\$1,346,000.00

### ART IN PUBLIC PLACES PROGRAM ..... \$5,571,428.37

Commissioned Works of Art .....	\$768,469.87
Relocatable Works of Art .....	\$446,032.16
Acquisitions .....	\$322,392.17
Exhibition Services .....	\$123,639.99
Works of Art Conservation .....	\$854,418.43
Registration .....	\$20,174.70
Art in Public Places Administration .....	\$1,776,667.72
Personnel .....	\$1,418,166.78
Operating .....	\$72,161.33
Special Fund Assessments by Department of Budget & Finance .....	\$286,339.61
Hawai'i State Art Museum .....	\$1,361,665.49
Artists in the School .....	\$344,000.00

### PRIVATE CONTRIBUTIONS ..... \$39,516.58

Hawai'i State Art Museum .....	\$39,516.58
--------------------------------	-------------

### TOTAL EXPENSES ..... \$8,464,921.13



**EXCESS OF REVENUE OVER EXPENSES**

**STATE**

General Fund Lapsed .....	\$3,297.85
General Fund Lapsed due to Restrictions by Administration .....	\$42,470.00
Works of Art Special Fund Reversion .....	\$14,306.63
Works of Art Capital Improvement Project Fund .....	\$33,566.28
(carryover from previous year, fund established prior to Works of Art Special Fund)	

**FEDERAL**

National Endowment for the Arts Reversion .....	\$22,409.97
Basic State Grant .....	\$22,409.97

**PRIVATE CONTRIBUTIONS**

Carryover from previous year .....	\$73,197.81
Investment Pool Earnings .....	\$1,202.06

**TOTAL REVENUES OVER EXPENSES ..... \$190,450.60**





## APPENDIX A: ART IN PUBLIC PLACES PROGRAM

The State Foundation on Culture and the Arts was established by the Hawai'i State Legislature in 1965 as the official arts agency of the State of Hawai'i. The concept of setting aside one percent of construction appropriations to provide a funding base for the acquisition of works of art set a national standard in 1967 when Hawai'i became the first state in the nation to pass such legislation. The 1989 revision of the law created the Works of Art Special Fund, a non-lapsing account into which all funds set aside for works of art are deposited and from which expenditures for purposes consistent with Section 103-8.5, Hawai'i Revised Statutes, are made.

**The Works of Art Special Fund** shall be used solely for the following purposes:

1. Costs related to the acquisition of works of art, including any consultant or staff services required to carry out the art in public places and relocatable works of art programs;
2. Site modifications, display, and interpretive work necessary for the exhibition of works of art;
3. Upkeep services, including maintenance, repair, and restoration of works of art;
4. Storing and transporting works of art.



"Kumu lipo (Source of Life)" kapa by Roen Hufford, 2021 (detail). Art in Public Places (APP) Collection of the SFCA. **Photo credit: Roen Hufford**





## FISCAL YEAR 2022 ART IN PUBLIC PLACES (APP) COLLECTION PURCHASES AND GIFTS

The APP Program acquires works of art and commissions artists to create works of art for specific locations. These works of art are displayed in over 500 sites statewide.

60 artworks from 15 exhibits and venues were purchased this year. Works of art are purchased through a community process where an Acquisition Award Selection Committee (AASC) is convened to select works of art for purchase from public galleries, studios of master artists, gifts, and other approved sources. The AASC follows selection criteria to recommend artwork to the SFCA Board of Commissioners for approval to purchase. This year, AASC's visited 20 exhibits, reviewed 10 gifts, and recommended 65 artworks for purchase (note: the number of nominations and purchases differ as the purchase date of an artwork may be in a different fiscal year than the nomination). To learn more about how exhibit organizers can invite an AASC to an exhibit, please visit the SFCA website at [SFCA.Hawaii.gov/art-in-public-places-program/invite-committee](https://www.sfca.hawaii.gov/art-in-public-places-program/invite-committee).

## ARTISTS OF RELOCATABLE WORKS OF ART (PURCHASED)

Bernice Akamine, Charlene Asato, Margaret Barnaby, Derek Bencomo, Don Bernshouse, Jake Boggs, Tobias Brill, Drew Kahu'aina Broderick, V. Lee Cabanilla, Gaye Chan, Melissa Chimera, Ghislaine Chock, Jazmine Coke, Debra Drexler, Lynn Martin Graton, J. Griggs, Cheri Groom, Joy Sanchez and Daven Hee, Joanne Hopper, Roen Hufford, Jacob Jackson, Jackie Johnston, Keala Kai, Elizabeth Keller, James Knudsen, John Krenik, Kapulani Landgraf, Tom Lieber, Constance Liu, Licia McDonald, Sarah Metz, Elizabeth Miller, Joan Namkoong, Ann Okada, Carl F.K. Pao, Zach Pezzillo, Maya Lea Portner, Margo Ray, Mari Sakamoto, Don Shamblin, Michael Patrick Smith, Juvana Soliven, Dalani Tanahy, Lauren Trangmar, Jerry Vasconcellos, Carol Kouchi Yotsuda.

## GIFTS

Over 15% of the APP Collection artworks were gifted to the State of Hawai'i. In Fiscal Year2022, 9 gifts were received.

- Gift of First Hawaiian Bank: "Early Cultural Exchanges," fresco mural by Jean Charlot.
- Gift of Carrillio Ganther: "High Tide Kona," "Jetty and Boats," "Pandanus Palms," and "Mountains," all watercolor paintings by Juanita Vitousek.
- Gift of Danielle Koki: "Darkside," oil painting by Takeo Miji.
- Gift of Madeline Soder: "Ke Ola I Ka Wai," indigo-dyed and waxed hand-stitched paper by Madeline Soder.
- Gift of Wesley Oh and Reiko Stiver: "No. 7 Brambles" and "Seascape," both oil paintings by Takeo Miji.





## DISPL AY

4,995 Relocatable Works of Art were on view in over 600 sites in Fiscal Year 2022.

The APP Collection online catalog can be accessed via the SFCA website, searchable by artist, title, material and more at [sfca.hawaii.gov/art-in-public-places-program](https://sfca.hawaii.gov/art-in-public-places-program).

## MAINTENANCE

45 Commissioned Works of Art were cleaned and/or conserved in Fiscal Year 2022, including “The Eternal Flame” by Bumpei Akaji at the Hawai‘i State Capitol and “Maui Releasing the Sun” by Shige Yamada at Kahului Airport. 23 on O‘ahu, 2 on Hawai‘i Island, 17 on Maui, and 13 on Lāna‘i.

## FISCAL YEAR 2022 APP CONTRACTS

**AI MEDIA LLC**, Public program coordination for HiSAM 2022-2023, \$165,200.00

**ALII SECURITY SYSTEMS**, Security services for HiSAM, \$210,496.80

**BROMELKAMP COMPANY**, Database transition support, \$2,400.00

**DONALD HARVEY**, Maintenance of various APP Collection commissioned works of art, \$17,277.37

**DTL LLC**, Social media management service for HiSAM, \$69,600.00

**HONOLULU BIENNIAL FOUNDATION**, Curatorial work for HiSAM, \$522,513.00

**JESSICA BODNER**, Creation/installation of an exterior work of art for the University of Hawai‘i—West O‘ahu, \$300,000.00

**KIRK KUROKAWA**, Creation of Governor David Ige’s Portrait \$50,000.00

**LIGHTHOUSE PROJECT**, Video production services for interpretive work for HiSAM Museum exhibits and the APP Collection, \$218,324.52

**MAUREEN-MICHELLE K. CHUN**, Creation/installation of an exterior work of art for the Kapi‘olani Community College Culinary Institute of the Pacific, \$241,000.00

**PAUL HAYASHI**, Photo documentation of works of art in the APP Collection, \$20,104.70

**PIONEER MACHINERY INC.**, Demolition and disposal services, \$2,575.25

**ROBERTS HAWAII SCHOOL BUS**, Transportation services for the Art Bento museum education program for public and charter schools, \$40,319.36

**ROSA LOWINGER AND ASSOCIATES**, Conservation of APP Collection commissioned works of art located at various State properties on O‘ahu, \$271,796.00

**ROYAL MEDIA NETWORK**, Purchase of cargo van, \$66,800.00

**STAFFING SOLUTIONS OF HAWAII**, Interpretive guide services at HiSAM, \$199,693.92

**TREE CONCEPTS HAWAII**, Landscape maintenance of the Sculpture Garden and Courtyard, \$37,420.00

**WALL-TO-WALL STUDIOS, INC.**, Marketing coordination for HiSAM, \$88,617.77

## ART BENTO TEACHING ARTISTS

**DENISE KARABINUS**, \$8,500.00

**ELIZABETH TRAIN**, \$2,705.00

**HANNAH SHUN**, \$7,240.00

**LAI UE LIU**, \$9,890.00

**LAUREL NAKANISHI**, \$2,670.00

**MIMI E. WISNOSKY**, \$8,900.00

**MICHAEL R. COWELL**, \$11,020.00

**STEVEN KEAN**, \$6,580.00





# APPENDIX B: GRANTS AND COMMUNITY PROJECTS

\$759,500 in American Rescue Plan Act (ARPA) grants were distributed in Fiscal Year 2022 by the SFCA to 41 Hawai'i arts and culture organizations and 20 individual arts/culture practitioners impacted by COVID-19. These ARPA funds, appropriated by the National Endowment for the Arts (NEA), support the arts sector as it recovers from the devastating impact of COVID-19.

The recovery grants for organizations supported salaried staff positions, fees for artists and contractual personnel, facilities expenses, costs associated with the health and safety supplies for staff and/or visitors and audiences (PPE and cleaning supplies) and select marketing and promotion costs. Recovery grants for individuals supported artist stipend/fees to carry out specific projects and activities.

Each organization received \$15,000. Of the 41 organizations, 22 are located on O'ahu, 9 on Hawai'i Island, 8 on Maui, and 1 each on Kaua'i and Lana'i.

Individuals received \$7,225 each. Several projects included multiple islands, as reflected in the list of funded projects below.

## NONPROFIT ORGANIZATIONS RECEIVING GRANTS (BY ISLAND)

### HAWAI'I ISLAND

- Aloha Performing Arts Company d.b.a. Aloha Theatre
- Edith K. Kanaka'ole Foundation
- Holualoa Foundation for Arts & Culture  
d.b.a. Donkey Mill Art Center
- Kahilu Theatre Foundation
- Kamuela Philharmonic Orchestra Society
- Kona Dance and Performing Arts
- Kona Historical Society
- Pūlama Nā Liko
- West Hawaii Dance Theatre

### KAUA'I

- Garden Island Arts Council

### LĀNA'I

- Lāna'i Academy of Performing Arts Inc.

### MAUI

- Alexander & Baldwin Sugar Museum
- Ebb & Flow Arts
- Hana Arts
- Hui Noeau
- Hui O Wa'a Kaulua
- Kāhuli Leo Le'a
- Maui Academy of Performing Arts
- Maui Dance Council

### O'AHU

- Alliance for Drama Education
- Bishop Museum
- Chamber Music Hawai'i
- Diamond Head Theatre
- Hawai'i Alliance for Arts Education  
d.b.a. Hawai'i Arts Alliance
- Hawai'i International Film Festival
- Hawai'i Symphony Orchestra
- Hawaii Theatre Center



Hawaii Youth Opera Chorus  
 Hawai'i Youth Symphony Association  
 Honolulu Biennial Foundation  
 Honolulu Theatre for Youth  
 Hula Preservation Society  
 Kumu Kahua Theatre  
 Mānoa Heritage Center  
 Moanalua Gardens Foundation, Inc.  
 Monkey Waterfall  
 Nova Arts Foundation Inc.  
 PA'I Foundation  
 Sounding Joy Music Therapy, Inc.  
 The Friends of Iolani Palace  
 YOUNG OF HEART WORKSHOP  
 d.b.a. Pu'uhonua Society

## INDIVIDUAL AMERICAN RESCUE PLAN ACT (ARPA) GRANTS

Roberta LW Ahsing, "INSIGHT: Developing Student Voice and Visual Literacy through the Arts" (Dance); Maui and O'ahu

Wailani Artates "Hawaiian Music Album Concept Development and Package Design" (Cultural and Media Arts); Maui and O'ahu

Sean-Joseph Choo "Kamamo House Short Play Showcase" (Theatre); O'ahu

Shannon Hiramoto "Mu'umu'u Digital Archive" (Visual Arts); Hawai'i Island, Kaua'i, Lāna'i, Maui, Moloka'i, and O'ahu

Matthew Jakielski "Hot Glass Hawaii" (Visual Arts); Hawai'i Island

Victoria Nalani Kneubuhl "E Huliāmahi: The Life of Prince Jonah Kūhiō Kalaniana'ole Pi'ikoi" (Literary, Media, and Theatre Arts); Hawai'i Island, Kaua'i, Maui, and O'ahu

Frances Kuba "Preserving the Legacy of our rich Okinawan culture" (Cultural and Dance); O'ahu

Anne Victoria Leilehua Lanzilotti "Sky Gate" (Music); O'ahu

Maile Loo "Auntie Nona's Key to the Ki" (Cultural and Dance); O'ahu

Robin Lung "Short Documentary on Preservationist/ Photographer Nancy Bannick" (Literary, Media, and Multimedia Arts); Hawai'i Island, Kaua'i, Lāna'i, Maui, Moloka'i, and O'ahu

Mark K. Lupenui "PASSING NOTES: The Kohala Ephemera Project" (Cultural, Music, and Visual Arts); Hawai'i Island

Julie Matheis "Elevating Foster & Biological 'Ohana Connections Through Art" (Visual Arts), Lāna'i, Maui, and Moloka'i

Jeff Peterson "Hawaiian Slack Key Guitar Instructional Method by Jeff Peterson" (Music); Hawai'i Island, Kaua'i, Maui, and O'ahu

Angel Prince "My Empty Body is Full of Stars" (Dance, Multimedia, and Theatre Arts); Hawai'i Island

Christopher Ritson "Creating a Creator: Biogenerative Art and Sustainable Esthetics" (Media, Multimedia, and Visual Arts); O'ahu

Stefan C Schaefer "Short Film Created with Maui Teens (film title TBD)" (Literary and Media Arts); Maui

Margaret Theresa Sutrov "Ulana 'Aina" (Visual Arts); Maui

Dalani Tanahy "Supporting New Kapa Makers With Ongoing Classes, Interaction and Materials" (Cultural); O'ahu

Stuart Yamane "The Making of DAC: The Downtown Art Center" (Media Arts); O'ahu

Allison T Yanagi "Kucho Girl on YouTube: Classical and Traditional Okinawan Music and Poetry" (Dance and Music); Hawai'i Island, Kaua'i, Lāna'i, Maui, Moloka'i, and O'ahu



## ARTISTS IN THE SCHOOLS (AITS) CONTRACTS

All public and charter schools in the state can apply annually for a Pre-K–12 arts residency grant. Schools are required to use an artist from the SFCA Artistic Teaching Partners Roster. Most elementary schools do not have arts specialists despite the arts being considered a core subject, so most of the applications serve elementary grades. AITS offers residencies in dance, drama, music, literary arts, and visual arts. Under the SFCA, over 12,000 children and 500 teachers in approximately 100 schools are serviced statewide on 6 islands.

97 school grant applications were received, reviewed, and awarded grants this year. Applications are reviewed by a Grant Review Panel of individuals with a deep understanding of arts education and who reside on different islands. Panelists are volunteers and do not receive compensation.

The AITS program follows Hawai'i Administrative Rules, Chapters 3-92 to 3-93 concerning panel and application administration.

The Hawai'i Community Foundation (HCF) has contributed matching funds since 2008 with direct funding to the Artistic Teaching Partner 501(c)(3) organizations that are working with the selected AITS schools.

## FOLK AND TRADITIONAL ARTS GRANTS

**NATIONAL ORGANIZATION FOR TRADITIONAL ARTIST EXCHANGE (NOTAE)**, Folk and Traditional Arts Program Support, Kumulā'au Sing, \$80,000.00

### CULTURE CONTRACTS

**BISHOP MUSEUM**, Cultural Preservation Support: Corona State Fiscal Recovery Funds (CSFRF), \$80,000.00

**DESIGN ASYLUM, INC.**, Annual Report Design and Printing, \$7,672.01

**FRIENDS OF IOLANI PALACE**, Cultural Preservation Support: Corona State Fiscal Recovery Funds (CSFRF), \$720,000.00

**UNIVERSITY OF HAWAI'I**, Statewide Presenting and Touring — Statewide Cultural Extension Program (SCEP), \$75,000.00

### BIENNIUM GRANTS

The SFCA provides public funds to Hawai'i nonprofit 501(c)3 arts and culture organizations through Biennium Grants to support projects designed to promote, perpetuate, and preserve culture and the arts in Hawai'i. Funding categories are Presenting and Performing Arts, Heritage and Preservation, Arts Education, and Community Arts. Grants are funded in the amounts of \$5,000, \$10,000, and \$15,000. Organizations are located statewide, and many include Neighbor Islands in their program outreach.

Grant Review Panels consisting of professionals with backgrounds in the arts and culture sector review and score submitted applications based on their proposed activities (50%), qualifications (25%), and the need, benefit, impact, and good use of public funds (25%). Panelists are volunteers and do not receive compensation.

The Biennium Grants Program follows Hawai'i Chapters 3-92 and 3-93 HRS concerning panel and application administration, including Chapter 9-11 for applicant eligibility purposes.

### HAWAI'I ISLAND

**EAST HAWAI'I CULTURAL COUNCIL D.B.A. EAST HAWAI'I CULTURAL CENTER**, Young at Art, \$10,000

**HAWAI'I CONCERT SOCIETY**, Hawai'i Concert Society Season 2021-2022, \$5,000

**HAWAI'I FOREST INSTITUTE (HFI)**, Symphony of the Hawai'i Forests: Engaging Through Music, Art, Dance & Stories, \$15,000

**HOLUALOA FOUNDATION FOR ARTS & CULTURE D.B.A. DONKEY MILL ART CENTER**, Donkey Mill Art Center Exhibition Program 2021-2022, \$15,000



**KAHILU THEATRE FOUNDATION**, Kahilu Theatre  
2021-2022 Season, \$15,000

**PRINCE DANCE COMPANY**, Dancing Galaxies Interactive  
Dance Education in Schools, \$15,000

**SOCIETY FOR KONA'S EDUCATION AND ART**, The Basic  
Art of Community Learning, \$10,000

**VOLCANO ART CENTER**, The Arts of Creative Cultures  
Program, \$15,000

**SOCIETY FOR KONA'S EDUCATION AND ART**, The Basic  
Art of Community Learning, \$10,000

**VOLCANO ART CENTER**, The Arts of Creative Cultures  
Program, \$15,000

## KAU'AI

**THE KAUAI CHORALE**, The Kauai Chorale, \$5,000

## LĀNA'I

**LĀNA'I ACADEMY OF PERFORMING ARTS INC.**, Acting,  
Music, Dance, and Creative Writing Classes, \$5,000

## MAUI

**HANA ARTS**, Strengthening the East Maui Community  
through Art, \$15,000

**HUI NO'EAU**, Enhancing Lives on Maui through Visual  
Arts Education, \$15,000

**MAUI ARTS & CULTURAL CENTER**, MACC Presents  
2021-2022: Selected Works, \$15,000

**MAUI POPS ORCHESTRA, INC.**, Maui Pops Orchestra  
2021/2022 Concert Season, \$15,000

**PORTUGUESE ASSOCIATION OF MAUI**, Basic Portuguese  
Culture, \$5,000

## MOLOKA'I

**MOLOKAI ARTS CENTER, INC.**, Malu Kukui, \$15,000

## O'AHU

**BALLET HAWAII**, Ballet Hawaii Presents 2021–2022, \$15,000

**BAMBOO RIDGE PRESS**, Publication of Literary Books,  
\$15,000

**HAWAI'I COUNCIL FOR THE HUMANITIES**, Hawai'i  
History Day: Debate and Diplomacy/Successes,  
Failures, Consequences, \$15,000

**HAWAI'I ALLIANCE FOR ARTS EDUCATION D.B.A.  
HAWAI'I ARTS ALLIANCE**, Traditional Arts Program,  
\$15,000

**HAWAII INSTITUTE FOR MUSIC ENRICHMENT  
AND LEARNING EXPERIENCES, INC. (HIMELE)**,  
Hawaiian Steel Guitar Festivals and Showcases, \$15,000

**HAWAI'I OPERA THEATRE**, Hawai'i Opera Theatre  
— Education Programs, \$15,000

**HAWAII PERFORMING ARTS COMPANY, LTD. D.B.A.  
MĀNOA VALLEY THEATRE**, 2021-2022 Mainstage  
Season; Studio Series; Educational Outreach, \$15,000

**HAWAII THEATRE CENTER**, Partners in the Arts 2021–  
2022, \$15,000

**HAWAII YOUTH OPERA CHORUS**, Music Education  
and Performance on Oahu, Emphasizing Hawaiian  
Culture, \$15,000

**HISTORIC HAWAI'I FOUNDATION**, Historic District  
Story Maps, \$5,000

**HONOLULU THEATRE FOR YOUTH**, 1 HTY Virtual Field Trip  
(VFT) Production & 1 Live Site-Specific Show, \$15,000

**KUMU KAHUA THEATRE**, Kumu Kahua Theatre 2022  
Season, \$15,000

**MĀNOA HERITAGE CENTER**, Engaging Community to  
Build Cultural Resilience, \$15,000

**NOVA ARTS FOUNDATION INC.**, Oh My Goddess!  
(Ola Ko'u Akua Wahine!) Phase 1: Creation, \$15,000

**SOUNDING JOY MUSIC THERAPY, INC.**, Music for  
Lifelong Resilience: Engaging Older Adults through  
Music Therapy, \$15,000

**UNIVERSITY OF HAWAI'I—MĀNOA (OUTREACH  
COLLEGE)**, World Performance Series, \$10,000

**UNIVERSITY OF HAWAI'I—WEST O'AHU (HUMANITIES  
DIVISION)**, Kani Kuola: Annual University of Hawai'i System  
Music Festival, \$15,000



# APPENDIX C: SCHOOLS SERVED

This list includes schools served by SFCA arts education programs (Artists in the Schools, Poetry Out Loud, and Art Bento) as well as community programs supported by SFCA funding (Biennium Grants and American Rescue Plan Act grants), and schools that participated in student art competitions and exhibitions at the State Art Museum.

## ONLINE

Hawai'i Virtual Learning Network

## HAWAI'I ISLAND

### SCHOOL DISTRICT: HAWAI'I

- Connections PCS
- Ernest Bowen de Silva Elementary
- Ha'aheo Elementary School
- Haili Christian School\*
- Hawai'i Academy of Arts and Sciences PCS
- Hawai'i Montessori Schools\*
- Hawaii Preparatory Academy\*
- Hawaii Technology Academy, Kona PCS
- Hilo High
- Hilo Intermediate
- Hilo Union Elementary
- Holualoa Elementary
- Hōnaunau Elementary
- Honoka'a Elementary
- Honoka'a Intermediate
- Ho'okena Elementary
- Innovations PCS\*
- Ka 'Umeke Kā'eo PCS
- Kamehameha Schools — Hawai'i Island
- Kanu o ka 'Āina New Century PCS
- Ka'ū High & Pāhala Elementary
- Ka'umana Elementary
- Kea'au High
- Kealakehe Elementary
- Kealakehe Intermediate

- Kealakehe High
- Keonepoko Elementary
- Kohala Elementary & Middle
- Kohala High
- Kona Pacific PCS
- Konawaena Elementary
- Konawaena Middle
- Konawaena High
- Kua O Ka La New Century PCS
- Laupāhoehoe Elementary & High School Community PCS
- Makua Lani Christian Academy\*
- Pa'auilo Elementary and Middle
- Parker School\*
- Volcano School of Arts and Sciences PSC
- Waiākea High
- Waiākeawaena Elementary
- Waikoloa Elementary and Middle School
- Waimea Elementary
- Waimea Middle PCS
- West Hawai'i Explorations Academy PCS\*

## KAU'AI

### SCHOOL DISTRICT: KAU'AI

- Hanalei Elementary School
- Hawaii Technology Academy, Kauai PCS
- Island School\*
- Kalaheo Elementary
- Kanuikapono PCS
- Kapa'a Elementary
- Kapa'a High



Kawaikini New Century PCS  
Kilauea Elementary  
Koloa Elementary

## MAUI

### SCHOOL DISTRICT: MAUI

Baldwin High  
Christ the King Preschool\*  
Emmanuel Lutheran Preschool\*  
Hā'iku Elementary  
Haleakalā Waldorf School\*  
Hāna High and Elementary  
Hana School  
Hawaii Technology Academy, Maui PCS  
Henry Perrine Baldwin High  
Homeschool Students of East Maui  
Iao Intermediate  
Kahului Baptist Preschool\*  
Kamehameha Schools — Maui  
Kihei Elementary  
King Kekaulike High  
Kula Elementary  
Lahaina Head Start Preschool  
Lihikai Elementary  
Lokelani Intermediate  
Makawao Elementary  
Makawao Head Start Preschool  
Maui High  
Maui Preparatory Academy\*  
Maui Waena Intermediate  
MEO Head Start — University of Hawai'i Maui College  
Pa'ia Elementary  
Pōmaika'i Elementary  
Pukalani Elementary  
Pu'u Kukui Elementary  
Seabury Hall School\*  
Waihe'e Elementary

Wailuku Elementary School  
Wailuku Hongwanji Preschool\*

## MOLOK A'I

### SCHOOL DISTRICT: MAUI

Kaunakakai Elementary  
Kilohana Elementary  
Kualapu'u Elementary PCS  
Maunaloa Elementary

## O'AHU

### SCHOOL DISTRICT: CENTRAL O'AHU

'Aiea Hongwanji Preschool\*  
'Aiea Intermediate School  
Āliamanu Elementary School  
Āliamanu Middle School  
Daniel K. Inouye Elementary  
Excel Church Preschool\*  
Gustav H. Webling Elementary  
Hale'iwa Elementary School  
Hanalani Schools\*  
Helemano Elementary  
Ho'āla School\*  
'Iliahi Elementary  
Ka'ala Elementary  
Keiki Care Center of Hawai'i Preschool\*  
Leilehua High  
Makalapa Elementary  
Mililani High  
Mililani 'Ike Elementary  
Mililani Mauka Elementary  
Mililani Presbyterian Preschool\*  
Mililani Uka Elementary  
Mililani Waena Elementary  
Moanalua High  
Mokulele Elementary  
Navy Hale Keiki School\*





Our Savior Lutheran School (Cross Academy)\*  
 Red Hill Elementary  
 Salt Lake Elementary School  
 Waialua Elementary  
 Waimalu Elementary

**SCHOOL DISTRICT: HONOLULU**

Ala Wai Elementary  
 Ali‘iolani Elementary School  
 Central Pacific College\*  
 Governor Wallace R. Farrington High School  
 Haha‘ione Elementary School  
 Hanahau‘oli School\*  
 Hawai‘i Baptist Academy  
 Henry J. Kaiser High  
 Hōkūlani Elementary  
 Holy Nativity School\*  
 Hongwanji Mission School\*  
 ‘Iolani School\*  
 Ka‘uluwela Elementary  
 Kāhala Elementary  
 Kaimukī Christian School\*  
 Kaimuki High  
 Kaimuki Middle  
 Kalani High  
 Kalihi Elementary  
 Kalihi Kai Elementary  
 Kalihi Uka Elementary  
 Kamehameha Elementary\*  
 Kamehameha Schools Kapālama\*  
 Kamilo‘iki Elementary  
 Kauluwela Elementary  
 King David Kalākaua Middle  
 King Liholiho Elementary  
 Kula Kaiapuni ‘O Ānuenu Hawaiian  
 Language Immersion

La Pietra — Hawai‘i School For Girls\*  
 Lanakila Elementary  
 Linapuni Elementary  
 Makiki Christian Church Preschool\*  
 Mānoa Elementary  
 Mānoa Japanese Language School  
 Maryknoll Grade School\*  
 Maryknoll High School\*  
 Mayor Joseph J. Fern Elementary  
 McKinley High  
 Mid-Pacific Institute\*  
 Mo‘O Montessori School\*  
 Myron B. Thompson Academy PCS  
 Niu Valley Middle  
 Noelani Elementary  
 Nu‘uanu Elementary  
 Pacific Buddhist Academy\*  
 Pālolo Elementary  
 President Abraham Lincoln Elementary  
 President George Washington Middle  
 President Theodore Roosevelt High  
 President Thomas Jefferson Elementary  
 Prince David Kawanānakoā Middle  
 Prince Jonah Kūhiō Elementary  
 Princess Kaiulani Elementary  
 Princess Likelike Elementary  
 Princess Ruth Ke‘elikōlani Middle  
 Princess Victoria Ka‘iulani Elementary  
 Pu‘uhale Elementary  
 Punahou Schools\*  
 Queen Ka‘ahumanu Elementary  
 Royal Elementary  
 Sacred Hearts Academy\*  
 School for Examining Essential Questions  
 of Sustainability (SEEQS) PCS



St. Andrew's Schools\*  
 St. Patrick School\*  
 University Laboratory PCS  
 Voyager PCS  
 Wai'alae Elementary PCS  
 Waikīkī Elementary  
 Waolani Judd Nazarene School\*

### SCHOOL DISTRICT: LEEWARD O'AHU

August Ahrens Elementary  
 DreamHouse 'Ewa Beach Public Charter School  
 'Ewa Elementary  
 'Ewa Beach Elementary  
 Hawaii Technology Academy, Waipahu PCS  
 Highlands Intermediate  
 Honowai Elementary  
 Island Pacific Academy\*  
 Ka'imiloa Elementary  
 Kamaile Academy PCS  
 Kapolei Middle  
 Kapolei High  
 Mākaha Elementary  
 Makakilo Elementary  
 Mānana Elementary  
 Mauka Lani Elementary  
 Nānākuli Elementary  
 Pearl City High  
 Pearl Harbor Christian Academy\*  
 Pearl Ridge Elementary  
 St. Francis Preschool\*  
 Wai'anae High  
 Wai'anae Elementary  
 Waiau Elementary  
 Waikele Elementary  
 Waipahu Intermediate

### SCHOOL DISTRICT: WINDWARD O'AHU

'Aikahi Elementary  
 'Āhuimanu Elementary  
 Asia Pacific International School\*  
 Blanche Pope Elementary  
 Enchanted Lake Elementary  
 Governor Samuel Wilder King Intermediate  
 Hau'ula Elementary  
 Hawaiian Mission Academy Windward\*  
 He'eia Elementary  
 James B. Castle High  
 James Campbell High  
 Ka'ōhao PCS  
 Ka'a'awa Elementary  
 Ka'elepulu Elementary  
 Kahuku High and Intermediate  
 Kailua Elementary  
 Kailua Intermediate  
 Kailua High  
 Kainalu Elementary  
 Kalaheo High  
 Kāne'ohe Elementary  
 Ka'ōhao PCS  
 Ke Kula 'O Samuel M. Kamakau Laboratory PCS  
 Lā'ie Elementary  
 Le Jardin Academy\*  
 Mālama Honua PCS  
 Maunawili Elementary  
 Parent Participation Nursery School Kailua\*  
 St. Mark Lutheran School\*  
 Sunshine School Kailua\*  
 Trinity Christian School\*  
 Waimanalo Elementary and Intermediate  
 Windward Nazarene Academy

PCS = Public Charter School

\*Non-Department of Education Schools



## KEEP IN TOUCH!

Keep in touch with the SFCA and the State Art Museum!

Get updates on events, grants, calls for artists, and other creative opportunities.

Telephone: (808) 586-0300

Website: [www.sfca.hawaii.gov](http://www.sfca.hawaii.gov) | Email: [HawaiiSFCA@hawaii.gov](mailto:HawaiiSFCA@hawaii.gov)

Facebook: [@hawaiisfca](https://www.facebook.com/hawaiisfca) | Instagram: [@hawaii\\_sfca](https://www.instagram.com/hawaii_sfca) | Twitter: [@hawaii\\_sfca](https://twitter.com/hawaii_sfca)

Subscribe to our monthly email newsletter: [sfca.hawaii.gov/newsletter](http://sfca.hawaii.gov/newsletter)



# SFCA STAFF: JULY 1, 2021 – JUNE 30, 2022

## DEPARTMENT OF ACCOUNTING AND GENERAL SERVICES

Curt Otaguro, Comptroller

Audrey Hidano, Deputy Comptroller

## STATE FOUNDATION ON CULTURE AND THE ARTS

### ADMINISTRATION

Jonathan Johnson, Executive Director

Rhiannon Keene, Secretary

### SUPPORT SERVICES

Lorelin Bartolome-Castillo,  
Account Clerk

Mamiko K. Carroll, Information  
Specialist

Susan Naanos, Accountant

Sara Beth Newell, Administrative  
Services Assistant

### DESIGNATED PROGRAMS

Denise Miyahana,  
Arts Program Specialist  
(through October 29, 2021)

Brittany Rakowitz,  
Arts Program Specialist

Danica “Nikki” Rosengren,  
Arts Program Specialist

### ART IN PUBLIC PLACES

Karen Ewald, Director, Hawai'i State  
Art Museum and Art in Public  
Places Program

Nathan Balcombe, Exhibit Specialist

Elizabeth Baxter, Curator

Derek Erwin, Conservation  
Coordinator

K. Teig Grennan,  
Senior Exhibit Specialist

Susan M. Hogan, Museum Educator  
(through May 31, 2021)

Kamakani Konia, Project Manager

Ozzie Kotani, Registrar  
(through June 30, 2022)

Katharena Rentumis, Exhibit Specialist  
(through June 3, 2022)

Zhi Situ, Exhibit Specialist  
(through June 3, 2022)

Alexandra Skees, Project Manager

Scott M. Young, Visitor Services  
Manager

Vacant: .25 FTE Office Assistant III

### FISCAL YEAR 2021 – 2022 ANNUAL REPORT

Mamiko K. Carroll, Editor

Design Asylum, Inc., Designer

HONBLUE, Printer

### PHOTO CREDITS

Cover: Linnny Morris

Page 19: courtesy of the artist

Pages 5, 20, 21, 24, 40, and  
back cover: Brandyn Liu

Page 40 (ballet dancer): SFCA



**HAWAII'**

STATE FOUNDATION on  
CULTURE and the ARTS

**250 South Hotel St., Second Floor, Honolulu, HI 96813**

Phone: (808) 586-0300 | Fax: (808) 586-0308

Website: [HawaiiSFCA@hawaii.gov](mailto:HawaiiSFCA@hawaii.gov) | Email: [www.sfca.hawaii.gov](http://www.sfca.hawaii.gov)

Facebook: [@hawaiisfca](https://www.facebook.com/hawaiisfca) | Instagram: [@hawaii\\_sfca](https://www.instagram.com/hawaii_sfca) | Twitter: [@hawaii\\_sfca](https://twitter.com/hawaii_sfca)

**SUBSCRIBE TO OUR MONTHLY EMAIL NEWSLETTER:**

[www.sfca.hawaii.gov/newsletter](http://www.sfca.hawaii.gov/newsletter)