

## Application Submittal Checklist

*The following items are required for submittal of the grant application. Please verify and check off that the items have been included in the application packet.*

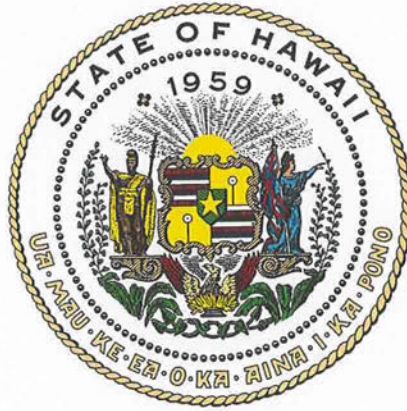
- 1) Certificate of Good Standing (If the Applicant is an Organization)
- 2) Declaration Statement
- 3) Verify that grant shall be used for a public purpose
- 4) Background and Summary
- 5) Service Summary and Outcomes
- 6) Budget
  - a) Budget request by source of funds ([Link](#))
  - b) Personnel salaries and wages ([Link](#))
  - c) Equipment and motor vehicles ([Link](#))
  - d) Capital project details ([Link](#))
  - e) Government contracts, grants, and grants in aid ([Link](#))
- 7) Experience and Capability
- 8) Personnel: Project Organization and Staffing

  
AUTHORIZED SIGNATURE

Richard Bettini, President & CEO  
PRINT NAME AND TITLE

01/20/2023  
DATE





## Department of Commerce and Consumer Affairs

### CERTIFICATE OF GOOD STANDING

I, the undersigned Director of Commerce and Consumer Affairs of the State of Hawaii, do hereby certify that

WAIANAE DISTRICT COMPREHENSIVE HEALTH AND HOSPITAL BOARD,  
INCORPORATED

was incorporated under the laws of Hawaii on 05/06/1969 ;  
that it is an existing nonprofit corporation; and that,  
as far as the records of this Department reveal, has complied  
with all of the provisions of the Hawaii Nonprofit Corporations  
Act, regulating domestic nonprofit corporations.

IN WITNESS WHEREOF, I have hereunto set  
my hand and affixed the seal of the  
Department of Commerce and Consumer  
Affairs, at Honolulu, Hawaii.

Dated: January 19, 2023

Director of Commerce and Consumer Affairs



**DECLARATION STATEMENT OF  
APPLICANTS FOR GRANTS PURSUANT TO  
CHAPTER 42F, HAWAII REVISIED STATUTES**

The undersigned authorized representative of the applicant certifies the following:

- 1) The applicant meets and will comply with all of the following standards for the award of grants pursuant to Section 42F-103, Hawaii Revised Statutes:
  - a) Is licensed or accredited, in accordance with federal, state, or county statutes, rules, or ordinances, to conduct the activities or provide the services for which a grant is awarded;
  - b) Complies with all applicable federal and state laws prohibiting discrimination against any person on the basis of race, color, national origin, religion, creed, sex, age, sexual orientation, or disability;
  - c) Agrees not to use state funds for entertainment or lobbying activities; and
  - d) Allows the state agency to which funds for the grant were appropriated for expenditure, legislative committees and their staff, and the auditor full access to their records, reports, files, and other related documents and information for purposes of monitoring, measuring the effectiveness, and ensuring the proper expenditure of the grant.
  
- 2) If the applicant is an organization, the applicant meets the following requirements pursuant to Section 42F-103, Hawaii Revised Statutes:
  - a) Is incorporated under the laws of the State; and
  - b) Has bylaws or policies that describe the manner in which the activities or services for which a grant is awarded shall be conducted or provided; and
  
- 3) If the applicant is a non-profit organization, it meets the following requirements pursuant to Section 42F-103, Hawaii Revised Statutes:
  - a) Is determined and designated to be a non-profit organization by the Internal Revenue Service; and
  - b) Has a governing board whose members have no material conflict of interest and serve without compensation.
  
- 4) The use of grant-in-aid funding complies with all provisions of the Constitution of the State of Hawaii (for example, pursuant to Article X, section 1, of the Constitution, the State cannot provide "... public funds ... for the support or benefit of any sectarian or nonsectarian private educational institution...").

Pursuant to Section 42F-103, Hawaii Revised Statutes, for grants used for the acquisition of land, when the organization discontinues the activities or services on the land acquired for which the grant was awarded and disposes of the land in fee simple or by lease, the organization shall negotiate with the expending agency for a lump sum or installment repayment to the State of the amount of the grant used for the acquisition of the land.

Further, the undersigned authorized representative certifies that this statement is true and correct to the best of the applicant's knowledge.

Waianae Coast Comprehensive Health Center

\_\_\_\_\_  
(Typed Name of Individual or Organization)

*Jaym O'Brien, Exec. V. P.*  
\_\_\_\_\_  
(Signature)

01/20/2023  
\_\_\_\_\_  
(Date)

*For*  
Richard Bettini  
\_\_\_\_\_  
(Typed Name)

President & CEO  
\_\_\_\_\_  
(Title)



**WAIANAЕ COAST  
COMPREHENSIVE  
HEALTH CENTER**  
www.wcchc.com

**Declaration Statement**

Waianae Coast Comprehensive Health Center (WCCHC) maintains compliancy with the “Standards for the award of grants and subsidies” under Section 42F-103, Hawaii Revised Statutes. WCCHC is approved by the Dept. of Health and Human Services/Health Resources and Services Administration to operate as a Federally Qualified Health Center; has been incorporated since May 6, 1969 and was designated as a nonprofit organization by the Internal Revenue Service in January 25, 1972. WCCHC adheres to a discrimination policy committed to promoting workplace inclusion in all demographic areas and prohibits discrimination against any person on the basis of race, color, national origin, religion, creed, sex, age, sexual orientation, and disability. WCCHC agrees to use state funds only for the established activities of the grant awarded and will not use state funds for entertainment or lobbying activities. WCCHC will grant full access to our records, reports, files, and other related documents for the purposes of monitoring, measuring of effectiveness, and ensuring the proper expenditure of the grant. WCCHC attests to having bylaws/policies that describe the manner in which the activities awarded by the grant shall be conducted or provided. WCCHC has a governing board of 19 members who have no material conflict of interest and serve without compensation.

**Public Purpose**

The Health Center is the only medical provider serving the Waianae coast and its’ 24-hour (365 days a year) emergency room is a vital service to the community. During medical emergencies, crisis in the community, disaster, or other occurrences that require immediate and urgent emergency services, the Health Center is the only medical facility within an accessible radius that is available and sufficiently equipped to be responsive with medical care. The Health Center’s central location in Waianae identifies its substantial role as part of the statewide Emergency Medical System (EMS) Network in time of a disaster and need for emergency medical response. The majority of emergency room visits are for conditions related to asthma, upper respiratory infection, and complications from insulin-dependent diabetes, and cardiovascular conditions, such as chest pains and heart attacks, threatened labor, and trauma injuries and wounds. A 30-40-minute commute (over an hour during the workweek) to the next closest emergency room (Queen’s Medical Center – West Oahu) can be a matter of life and death.

*Richard Bettini, Exec. V.P.*

*R* Richard Bettini, MPH, MS  
President and CEO

*1/20/2023*  
Date

## Application for Grants

*If any item is not applicable to the request, the applicant should enter "not applicable".*

### **I. Certification – Please attach immediately after cover page**

#### **1. Certificate of Good Standing (If the Applicant is an Organization)**

See attached.

#### **2. Declaration Statement**

See attached.

#### **3. Public Purpose**

See below in Section II. 3 and attached.

### **II. Background and Summary**

#### **1. BRIEF DESCRIPTION OF THE APPLICANT'S BACKGROUND**

The Waianae Coast Comprehensive Health Center (Health Center), established in 1972, opened its doors with one doctor and five staff. This past year, the Health proudly celebrated its 50th anniversary as the oldest and second largest of 15 community health centers in the state, and the largest employer on the Waianae coast. The Health Center currently employs over 600 staff that work throughout its main center in Waianae, at satellite clinics located in Kapolei, Nanakuli, Waianae, Waipahu and Ewa, four school-based sites on the Waianae coast, and at various other business and program sites throughout West Oahu.

The Health Center is the only health safety-net provider serving the medically underserved living in West Oahu. In 2022, the Health Center served 34,800 patients, the majority being Native Hawaiian (49%), followed by Asian & other Pacific Islanders (26%), and Caucasians (10%). Data shows 71% of patients are at 100% of the federal poverty level or below, 4% are uninsured, and 60% are receiving coverage under QUEST, the State of Hawaii's Medicaid program. Of the total patients served, 900 are identified as being homeless.

The Health Center's services include: primary medical care (adult medicine, family practice, pediatric health, women's health and school-based services); 24-hour emergency, laboratory and imaging services; walk-in clinics; behavioral health, substance abuse treatment, pain management; dental; specialty services; nutrition counseling; health professional training; case management; transportation; pharmacy; vision; WIC, patient assistance services, health promotion; food distributions; farmers' markets; Native Hawaiian Healing, and more.

The Health Center is proud of its mission as a healing center that provides accessible and affordable medical and traditional healing services with Aloha; a learning center that offers health career training to ensure a better future for our community; and an innovator, using leading edge technology to deliver the highest quality of medical services to our community.

The Health Center achieves its mission by not only serving patients who seek services, but also by incorporating the goal of improving the overall health status of the community it serves.

## **2. GOALS AND OBJECTIVES RELATED TO THE REQUEST**

Identified by the community as a vital service for the Waianae coast, emergency medical services were established at the Health Center on a limited basis starting in 1976 and since then, has been the sole provider of emergent care for the community. In 1986, with assistance from the state legislature, the Health Center's emergency room has been open twenty-four hours per day, 365 days a year. The emergency department has since added the critical role as a primary component on the Waianae coast for disaster preparedness and response in coordination with the state Emergency Medical Services (EMS) network.

Subsidy funding from the legislature, administered through the Department of Health, has supported the Health Center's emergency department to be open between the hours of midnight to 8:00am.

Although the state's current subsidy support is significant and valued, there has not been an increase in support since 2008 to compensate for the growth in operating costs the Health Center experiences. From 2008, the state has provided \$1,468,000 annually to subsidize the Health Center's emergency medical services from midnight to 8:00am.

The Health Center's 24-hour emergency medical services, which includes the capacity to be prepared to address any medically related disaster situation, operates at a severe loss. Emergency medical services operating costs for FY 2023 is projected to be \$14,645,674. The projected loss is \$5,113,838 with 71% (\$3,672,316) of the loss being for the midnight to eight a.m. period.

The Health Center is requesting \$2,000,000 to support the Health Center's ability to maintain its full emergency medical response for the community. (The \$2,000,000 is in addition to the \$1,468,000 subsidy allocated by the Department of Health to support the midnight to 8:00am emergency medical services).

As the primary medical provider on the Waianae Coast, the Health Center fills a major role in providing health services to the community, which allows the State to focus its limited resources in other areas.

There are factors that contribute to the inability of the Health Center to support itself financially, such as:

- The emergency department services a low-income, uninsured, and underinsured population;
- The emergency department serves a large homeless population on the Waianae coast;
- The economic base of the community is not able to support medical services on a fee-for-service basis and must absorb the cost of uninsured and underinsured patients;
- Due to the Center's status as a federally qualified health center, the Center is not allowed the benefit of hospital-based emergency departments to bill an emergency department facility fee for emergency patients covered under the federal Medicaid, Medicare, and Tri-care programs. Patients under these federal programs make up seventy per cent of the Center's base;
- The State's uninsured funding is capped at \$100 per visit for uninsured primary care visits and does not cover the full cost of the uninsured emergency department visits; and
- Other rural communities receive a large state subsidy for emergency services through the state hospital system, however, the Center does not receive proportionate support.

### **3. PUBLIC PURPOSE AND NEED TO BE SERVED**

The Health Center is the only medical provider serving the Waianae coast. The majority of emergency room visits are for conditions related to asthma, upper respiratory infection, and complications from insulin-dependent diabetes, and cardiovascular conditions, such as chest pains and heart attacks, threatened labor, and trauma injuries and wounds. A 30-40-minute commute (over an hour during the workweek) to the next closest emergency room (Queen's Medical Center – West Oahu) can be a matter of life and death.

The necessity for 24-hour emergency medical services on the Waianae coast has always existed. The coast is impacted by isolating events such as traffic accidents, fallen telephone poles, weather-related and other issues that close off-road access.

During medical emergencies, such as national crisis or disaster, or other occurrences that require immediate and urgent emergency services, the Health Center is the only medical facility within an accessible radius that is available and sufficiently equipped to be responsive. Furthermore, the Health Center's central location in Waianae, identifies its substantial role as part of the statewide Emergency Medical System (EMS).

The Health Center's emergency room is also used by the Honolulu Police Department (HPD) and Child Protective Services (CPS). The HPD brings in individuals who are in custody to the emergency room for medical care. The CPS uses the emergency room for pre-placement physical exams when children have been removed from the care of their parents or guardians. If the Honolulu Police Department had to transport individuals in their custody to Queens Medical Center - West Oahu (the second nearest emergency



facility), or another heavily utilized emergency facility, police protection in the community would decline during their commute.

#### **4. TARGET POPULATION TO BE SERVED**

The Waianae Coast is an economically distressed community of 50,127 that has yielded poor healthcare outcomes. The 2021 State of Hawaii Primary Care Needs Assessment Data Book Tracker states the following:

- 22.4% of the population has an annual income less than 100% of the federal poverty level, the highest in the County of Honolulu (9.8%) and third highest in the state (11.4%);
- 34.3% of Waianae households are receiving SNAP/Cash or other forms of public assistance, the highest rate in the City & County (9.7%) and the State (11.1%);
- The average per capita income is \$21,084 making it the lowest in the County (\$35,202) and the State (\$34,035);
- 55.0% of the children in households are receiving assistance, the highest in the County (22.4%) and the State (25.3%);
- 7.2% of adults aged 25 and older do not have a high school diploma, the second highest in the County (4.2%) and the State (4.4%).

The Health Center serves 34,800 patients through its main center in Waianae, satellite clinics in Waianae, Nanakuli, Kapolei, Ewa and Waipahu, its school-based sites, and its 24-hour emergency room.

The majority of emergency room visits are made by Waianae residents (90%), while 10% of patients are self-reported as tourists or non-Waianae residents either working in the community or taking part in recreational activities, such as fishing, hunting, diving, swimming, boating or surfing. The use of the emergency room by Waianae residents increases to 92% during the hours of midnight to 8:00am. Local residents, as well as the greater community and visitors to Waianae, are able to access much-needed services through the emergency room. The majority of the patients currently served by the Health Center's emergency room have multiple chronic conditions and are in need of care required for late stages of various illnesses. Drug use is also a major problem in the community and it is one of the root causes to many of the emergency room visits.

#### **5. GEOGRAPHIC COVERAGE**

As the primary medical provider on the Waianae Coast, the Health Center continues to fill a major role in providing health services to the community. This allows the State to focus its limited resources in other areas. Challenged by today's healthcare market, the Health Center is impacted by a community that continues to experience major erosion to its economic base and overall well-being. Increased homelessness, economic conditions, and

behavioral health conditions have increased the demand for emergency medical services on the Waianae coast, and the Health Center continues to be the safety net for uninsured and medically underserved patients.

### **III. Service Summary and Outcomes**

#### **1 & 2. SCOPE OF WORK, TASKS, RESPONSIBILITIES AND TIMELINE**

Since the request is for continued funding of emergency medical services that are already in place, the scope of work, tasks, responsibilities, and results, would be continuous.

#### **3. QUALITY ASSURANCE AND EVALUATION PLANS**

The Health Center has an active and robust quality improvement and compliance program. Quality and performance improvement activities of the Health Center represent an integrated multidisciplinary effort by all of its employees, including:

Medical providers, clinical and non-clinical management, mid-management, and program managers are active in addressing quality management components at the Health Center through the following: Peer Review Committee; Quality Improvement Committee; Compliance and Risk Management Committees; Adult Medicine, Pediatrics and Women's Health Specialty Committees; Disaster Preparedness Committee; Health and Safety Committee; Clinical Leadership Team; and the Executive Leadership Team.

Improvement of the overall organization is addressed through the Quality Improvement Committee, the Executive Leadership Team, and the Board of Directors.

#### **4. MEASURE(S) OF EFFECTIVENESS**

The effectiveness of this project will be measured by continuity of emergent care provided to the community 24 hours a day, 365 days a year. The Health Center will continue to report to the Department of Health the numbers served for the 24-hour operation and for the midnight to 8:00am period.

### **IV. Financial**

#### **1. BUDGET**

The Health Center's 24-hour emergency medical services, which includes the capacity to be prepared to address any medically related disaster situation, operates at a severe loss annually.

The Health Center's 24-hour emergency medical services operating costs for FY 2023 is projected to be \$14,645,674. The projected loss is \$5,113,838 with 71% (\$3,672,316) of the loss being for the midnight to eight a.m. period.

The Health Center is requesting \$2,000,000 to support the Health Center’s ability to maintain its full emergency medical response for the community between the hours of midnight to 8:00 am. The \$2,000,000 is in addition to the \$1,468,000 subsidy already allocated by the Department of Health to support the midnight to 8:00am emergency medical services. The current contract with the Dept. of Health for the ER subsidy ends June 30, 2024.

See attached budget pages.

**1. ANTICIPATED QUARTERLY FUNDING**

Quarter 1: \$500,000	Quarter 2: \$500,000	Quarter 3: \$500,000	Quarter 4: \$500,000	Total Grant: \$2,000,000
-------------------------	-------------------------	-------------------------	-------------------------	-----------------------------

**2. SOURCES OF FUNDING SEEKING FOR FISCAL YEAR 2024.**

The Health Center will be utilizing its own financial resources and emergency services revenue to cover any remaining costs to keep the emergency room open 24 hours/365 days a year.

**3. STATE AND FEDERAL TAX CREDITS**

The Health Center is not, and will not, be pursuing tax credits for emergency department funding.

**4. PRIOR THREE YEARS AND FISCAL YEAR 2024 PROGRAM FUNDING.**

Besides the current \$1,468,000 provided through the Department of Health as a subsidy for midnight to 8:00 am emergency medical services, that runs through June 30, 2024, the Health Center has also received \$50,000 in Trauma Support funding for the past six years. The Health Center has not received notification on FY 2024 Trauma Support funding.

**5. BALANCE OF UNRESTRICTED CURRENT ASSETS AS OF DEC. 31, 2022.**

As of November 30, 2022, the Health Center had \$30.0 million in unrestricted current assets. The federal Health Resources and Services Administration (HRSA) -- the agency that has oversight over the community health center program, under which the Health Center is funded, expects a health center to maintain cash on hand to cover an equivalent of two months operating expenses.

**V. Experience and Capability**

**1. Necessary Skills and Experience**

The Health Center is a non-profit community health center that has served the community going on 51 years. The growth of both the physical and program aspects of the Health Center over the past 50 years demonstrates the Health Center's experience and ability to plan and manage financial resources and capital development activities.

The Health Center has been ranked as one of the top three largest community service providers in the state for many years (Pacific Business News).

The Health Center is the only medical facility within an accessible radius that is available and sufficiently equipped to be responsive in the event of a national crisis, a natural disaster, or other occurrences that require immediate and urgent emergency services. The Health Center's emergency facility has been the sole provider of emergent care on the Waianae coast since 1976.

With recognition by the State of Hawaii as a Trauma Support Facility, the Health Center serves as a safety net for the residents of the Waianae coast and its participation in the statewide EMS is considered "crucial." Emergency department staff and administrative staff are active members in the Health Care Association of Hawaii, regularly updating and coordinating with other hospitals and members for disaster preparedness.

The Health Center's emergency room is disaster-ready in that it is connected to the Emergency Management computer that connects all of Hawaii hospitals within the statewide Emergency Medical System (EMS); it has mass casualty/disaster gear issued through the Health Care Association; and it has a command structure in place in case of a disaster (i.e. messaging systems, command post call in line, phone rosters, hand-held radios, mass casualty triage area, etc.)

## **2. Facilities**

The Health Center operates out of a main center in Waianae, five satellite clinics located in Kapolei, Nanakuli, Waianae, Ewa, and Waipahu, four school-based sites in Waianae and Nanakuli, and other business and program sites.

The Health Center's 16-plus acre main campus is situated on state Department of Land and Natural Resources and Department of Hawaiian Home Land parcels centrally located on the Waianae Coast. Permanent structures have been constructed or renovated through funding support from state, city, federal government and private foundations.

The main upper campus where the Emergency Medical Services Building is located sits on land managed by the Department of Land and Natural Resources.

Also, on the main upper campus are the primary care clinics, a specialty clinic, dental clinic, imaging, laboratory, a pharmacy, case management and outreach services, a

dining facility, the Native Hawaiian Healing Center, and administrative and information technology functions.

**VI. Personnel: Project Organization and Staffing**

**1. Proposed Staffing, Staff Qualifications, Supervision and Training**

Proposed staffing includes: Emergency medical technicians; Registered nurses; Medical Receptionists; Physicians; Physician’s Assistants, etc. See Budget for detail.

Clinical staff are credentialed and supervision/training is provided for all positions.

**2. Organization Chart**

See attached for the Organization chart.

**3. Compensation of Highest Paid Employees**

POSITION	SALARY
President/Chief Executive Officer	\$320,000 - \$400,000
Emergency Department Director	\$270,000 - \$350,000
Chief of Behavioral Health Sciences	\$200,000 - \$280,000

**VII. Other**

**1. Litigation**

The Health Center does not have any pending litigations, nor outstanding judgments against the agency.

**2. Licensure or Accreditation**

There is no specific licensure or accreditation required to operate the Health Center's emergency medical services. All medical staff are licensed and go through a credentialing process.

**3. Private Educational Institutions**

The grant request is to support 24-hour emergency services at the Health Center. The Health Center is a federally qualified community health center. Funding will not support or benefit a sectarian or non-sectarian private education institution.

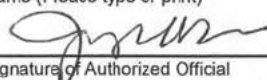
**4. Future Sustainability Plan**

The Health Center started discussions with Department of Health administrators and the Department Director in 2021 on avenues to seek growing and sustaining support for emergency medical and disaster preparedness services for the Waianae Coast. These discussions will continue.

**BUDGET REQUEST BY SOURCE OF FUNDS**

Period: July 1, 2023 to June 30, 2024

Applicant: Waianae District Comprehensive Health and Hospital Board, Incorporated  
dba Waianae Coast Comprehensive Health Center

<b>BUDGET CATEGORIES</b>	<b>State Grant-in-Aid Requested (a)</b>	<b>State Funds (b)</b>	<b>WCCHC and Other Funds (c)</b>	<b>Total Program Budget (d)</b>
<b>A. PERSONNEL COST</b>				
1. Salaries	981,786	644,378	5,425,380	7,051,544
2. Payroll Taxes & Assessments	84,637	56,956	466,299	607,892
3. Fringe Benefits	147,646	102,491	810,310	1,060,447
<b>TOTAL PERSONNEL COST</b>	<b>1,214,069</b>	<b>803,825</b>	<b>6,701,989</b>	<b>8,719,883</b>
<b>B. OTHER CURRENT EXPENSES</b>				
1. Airfare, Inter-Island	896	0	5,536	6,432
2. Airfare, Out-of-State	1,467	0	9,067	10,534
3. Contractual Services - Administrative	28,973	47,750	131,369	208,092
4. Insurance	12,205	7,625	67,833	87,663
5. Lease/Rental of Equipment	0	9	3,351	3,360
6. Lease/Rental of Space	0	0	0	0
7. Postage, Freight & Delivery	198	4	1,217	1,419
8. Repair & Maintenance	34,910	4,370	211,453	250,733
9. Staff Training	1,330	359	7,866	9,555
10. Supplies	83,478	97,084	419,009	599,571
11. Telecommunication	2,530	3,315	12,326	18,171
12. Utilities	34,611	16,541	197,437	248,589
13. Facilities Allocation	111,715	116,991	573,671	802,377
14. Patient Service Support Costs	163,270	140,580	865,438	1,169,288
15. Finance & Admin Allocation	310,348	229,547	1,689,130	2,229,025
16. Other	0	0	810,831	810,831
17				
18				
19				
20				
<b>TOTAL OTHER CURRENT EXPENSES</b>	<b>785,931</b>	<b>664,175</b>	<b>5,005,534</b>	<b>6,455,640</b>
<b>C. EQUIPMENT PURCHASES</b>				
<b>D. MOTOR VEHICLE PURCHASES</b>				
<b>E. CAPITAL</b>				
<b>TOTAL (A+B+C+D+E)</b>	<b>2,000,000</b>	<b>1,468,000</b>	<b>11,707,523</b>	<b>15,175,523</b>
<b>SOURCES OF FUNDING</b>		Budget Prepared By:		
(a) State Grant-in-Aid Requested	2,000,000	Cindy Yee	808-697-3128	
(b) State Funds (ER Subsidy)	1,468,000	Name (Please type or print)	Phone	
(c) WCCHC and Other Funds	11,707,523		1/17/2023	
		Signature of Authorized Official	Date	
<b>TOTAL BUDGET</b>	<b>15,175,523</b>	Joyce O'Brien, Executive Vice President		
		Name and Title (Please type or print)		

**BUDGET JUSTIFICATION - PERSONNEL SALARIES AND WAGES**

Period: July 1, 2023 to June 30, 2024

Applicant: Waianae District Comprehensive Health and Hospital Board, Inc.  
 dba Waianae Coast Comprehensive Health Center

POSITION TITLE	POSITION NO.	FULL TIME EQUIVALENT	ANNUAL SALARY A	% OF TIME ALLOCATED TO GRANT REQUEST B	TOTAL STATE FUNDS REQUESTED (A x B)
ED Medical Receptionist Supervisor	001789	1.00	70,581	13.92%	\$ 9,826
ED Technician	003094	0.10	6,013	13.92%	\$ 837
ED Technician	003103	0.90	54,121	13.92%	\$ 7,535
ED Technician	003187	0.90	56,921	13.92%	\$ 7,925
ED Technician	004676	0.10	6,013	13.92%	\$ 837
ED Technician	001116	0.90	54,121	13.92%	\$ 7,535
ED Technician	004900	0.10	6,013	13.92%	\$ 837
ED Technician	002551	0.90	54,121	13.92%	\$ 7,535
ED Technician	002683	0.90	54,305	13.92%	\$ 7,561
ED Technician	001700	0.90	54,285	13.92%	\$ 7,558
ED Technician	002461	0.90	54,121	13.92%	\$ 7,535
Medical Receptionist	003278	0.90	38,997	13.92%	\$ 5,429
Medical Receptionist	003144	0.90	32,702	13.92%	\$ 4,552
Medical Receptionist	001734	0.90	45,619	13.92%	\$ 6,351
Medical Receptionist	004118	0.90	32,702	13.92%	\$ 4,552
Medical Receptionist	002472	0.90	45,619	13.92%	\$ 6,352
Medical Receptionist	003615	0.90	32,702	13.92%	\$ 4,552
Medical Receptionist	003028	0.90	42,308	13.92%	\$ 5,891
Medical Receptionist	PR2739	0.90	32,702	13.92%	\$ 4,553
Registered Nurse - ED	003453	0.10	13,571	13.92%	\$ 1,889
Registered Nurse - ED	002368	0.10	13,571	13.92%	\$ 1,890
Registered Nurse - ED	PR2717	0.10	13,571	13.92%	\$ 1,890
Registered Nurse - ED	004870	0.10	13,571	13.92%	\$ 1,890
Registered Nurse - ED	003985	0.90	117,583	13.92%	\$ 16,371
Registered Nurse - ED	002300	0.90	117,583	13.92%	\$ 16,371
Registered Nurse - ED	003334	0.90	117,583	13.92%	\$ 16,371
Registered Nurse - ED	001716	0.90	117,583	13.92%	\$ 16,371
Registered Nurse - ED	002221	0.90	117,583	13.92%	\$ 16,371
Registered Nurse - ED	004787	0.10	13,571	13.92%	\$ 1,890
Registered Nurse - ED	003776	0.90	117,583	13.92%	\$ 16,371
Registered Nurse - ED	004224	0.90	117,583	13.92%	\$ 16,371
Registered Nurse - ED	004494	0.10	13,571	13.92%	\$ 1,890
Registered Nurse - ED	002652	0.90	105,708	13.92%	\$ 14,718
Registered Nurse - ED	004830	0.10	13,571	13.92%	\$ 1,890



Registered Nurse - ED	003173	0.10	13,571	13.92%	\$ 1,890
Registered Nurse - ED	004345	0.10	13,571	13.92%	\$ 1,890
Registered Nurse - ED	004700	0.10	13,571	13.92%	\$ 1,890
Registered Nurse - ED	004516	0.90	117,583	13.92%	\$ 16,371
Registered Nurse - ED	004003	0.90	117,583	13.92%	\$ 16,371
Registered Nurse - ED	003795	0.10	13,571	13.92%	\$ 1,890
Registered Nurse - ED	002481	0.90	117,583	13.92%	\$ 16,371
Registered Nurse - ED	002937	0.60	78,388	13.92%	\$ 10,914
Registered Nurse - ED	002615	0.10	13,571	13.92%	\$ 1,890
Registered Nurse - ED	003872	0.90	117,583	13.92%	\$ 16,371
Registered Nurse - ED	004673	0.10	13,571	13.92%	\$ 1,890
Registered Nurse - ED	002578	0.90	117,583	13.92%	\$ 16,371
Registered Nurse - ED	003570	0.10	13,571	13.92%	\$ 1,890
Registered Nurse - ED	002658	0.10	13,571	13.92%	\$ 1,890
Registered Nurse - ED Manager	002262	1.00	153,380	13.92%	\$ 21,355
Registered Nurse - ED Assistant Manager	001576	1.00	148,338	13.92%	\$ 20,653
Registered Nurse in Training - ED	003845	0.90	106,219	13.92%	\$ 14,789
Registered Nurse in Training - ED	PR2697	0.50	47,656	13.92%	\$ 6,635
Radiology Manager	004818	1.00	106,113	13.92%	\$ 14,774
Radiology Receptionist	004588	1.00	35,610	13.92%	\$ 4,958
Radiology Receptionist	004832	1.00	35,610	13.92%	\$ 4,958
Radiology Technologist	003069	0.90	40,934	13.92%	\$ 5,699
Radiology Technologist	003838	0.83	63,229	13.92%	\$ 8,803
Radiology Technologist	003844	0.90	75,368	13.92%	\$ 10,493
Radiology Technologist	004075	0.90	80,502	13.92%	\$ 11,208
Radiology Technologist	004627	0.75	76,256	13.92%	\$ 10,617
Radiology Technologist	004725	0.50	80,923	13.92%	\$ 11,267
Radiology Technologist	PR2454	0.10	21,115	13.92%	\$ 2,940
Radiology Technologist - Mammography	004527	0.75	64,164	13.92%	\$ 8,934
Radiology Technologist - Mammography	PR2256	0.75	57,587	13.92%	\$ 8,018
<b>Total Staff</b>			<b>3,765,625</b>		<b>\$ 524,287</b>
MD ED Physician	004819	0.10	37,306	13.92%	\$ 5,194
MD ED Physician	PR2719	0.20	75,320	13.92%	\$ 10,487
MD ED Physician	PR2700	0.40	149,224	13.92%	\$ 20,776
MD ED Physician	003977	0.10	38,798	13.92%	\$ 5,402
MD ED Physician	004514	0.10	38,798	13.92%	\$ 5,402
MD ED Physician	003229	0.10	38,798	13.92%	\$ 5,402
MD ED Physician	004667	1.00	314,291	13.92%	\$ 43,759
MD ED Physician	002538	1.00	340,311	13.92%	\$ 47,382
MD ED Physician	004629	0.60	232,789	13.92%	\$ 32,411

MD ED Physician	PR2708	0.60	225,961	13.92%	\$ 31,461
MD ED Physician	004576	0.10	37,660	13.92%	\$ 5,243
MD ED Physician	004650	0.10	37,306	13.92%	\$ 5,194
MD ED Physician	004625	0.10	37,306	13.92%	\$ 5,194
MD ED Physician	004477	1.00	320,312	13.92%	\$ 44,597
MD ED Physician	004839	0.10	37,306	13.92%	\$ 5,194
MD ED Physician	PR2732	0.40	150,641	13.92%	\$ 20,974
MD ED Physician	PR2713	0.40	150,641	13.92%	\$ 20,974
MD ED Physician - ED Director	003681	0.60	234,914	13.92%	\$ 32,707
<b>Total Physicians</b>			<b>2,497,683</b>		<b>\$ 347,753</b>
ED Physician Assistant	004116	1.00	157,193	13.92%	\$ 21,886
ED Physician Assistant	004799	0.40	67,056	13.92%	\$ 9,336
ED Physician Assistant	002319	0.88	155,503	13.92%	\$ 21,651
ED Physician Assistant	002321	0.40	70,683	13.92%	\$ 9,841
ED Physician Assistant	004160	0.10	17,435	13.92%	\$ 2,427
ED Physician Assistant	004602	0.10	17,435	13.92%	\$ 2,427
ED Physician Assistant	003385	0.60	114,921	13.92%	\$ 16,001
ED Physician Assistant	PR2713	0.10	14,875	13.92%	\$ 2,071
ED Sr. Physician Assist	001015	1.00	173,135	13.92%	\$ 24,106
<b>Total Mid-Level Providers</b>			<b>788,236</b>		<b>\$ 109,746</b>
<b>TOTAL:</b>					<b>\$ 981,786</b>
<b>JUSTIFICATION/COMMENTS:</b>					

## BUDGET JUSTIFICATION - EQUIPMENT AND MOTOR VEHICLES

Period: July 1, 2023 to June 30, 2024

Applicant: Waianae Coast Comprehensive Health Center

DESCRIPTION EQUIPMENT	NO. OF ITEMS	COST PER ITEM	TOTAL COST	TOTAL BUDGETED
			\$ -	
			\$ -	
			\$ -	
			\$ -	
			\$ -	
<b>TOTAL:</b>				
<b>JUSTIFICATION/COMMENTS:</b>				

DESCRIPTION OF MOTOR VEHICLE	NO. OF VEHICLES	COST PER VEHICLE	TOTAL COST	TOTAL BUDGETED
			\$ -	
			\$ -	
			\$ -	
			\$ -	
			\$ -	
<b>TOTAL:</b>				
<b>JUSTIFICATION/COMMENTS:</b>				

# BUDGET JUSTIFICATION - CAPITAL PROJECT DETAILS

Period: July 1, 2023 to June 30, 2024

Applicant: Waianae Coast Comprehensive Health Center

FUNDING AMOUNT REQUESTED						
TOTAL PROJECT COST	ALL SOURCES OF FUNDS RECEIVED IN PRIOR YEARS		STATE FUNDS REQUESTED	OTHER SOURCES OF FUNDS REQUESTED	FUNDING REQUIRED IN SUCCEEDING YEARS	
	FY: 2021-2022	FY: 2022-2023	FY:2023-2024	FY:2023-2024	FY:2024-2025	FY:2025-2026
PLANS						
LAND ACQUISITION						
DESIGN						
CONSTRUCTION						
EQUIPMENT						
<b>TOTAL:</b>						
<b>JUSTIFICATION/COMMENTS:</b>						

**GOVERNMENT CONTRACTS, GRANTS, AND / OR GRANTS IN AID**

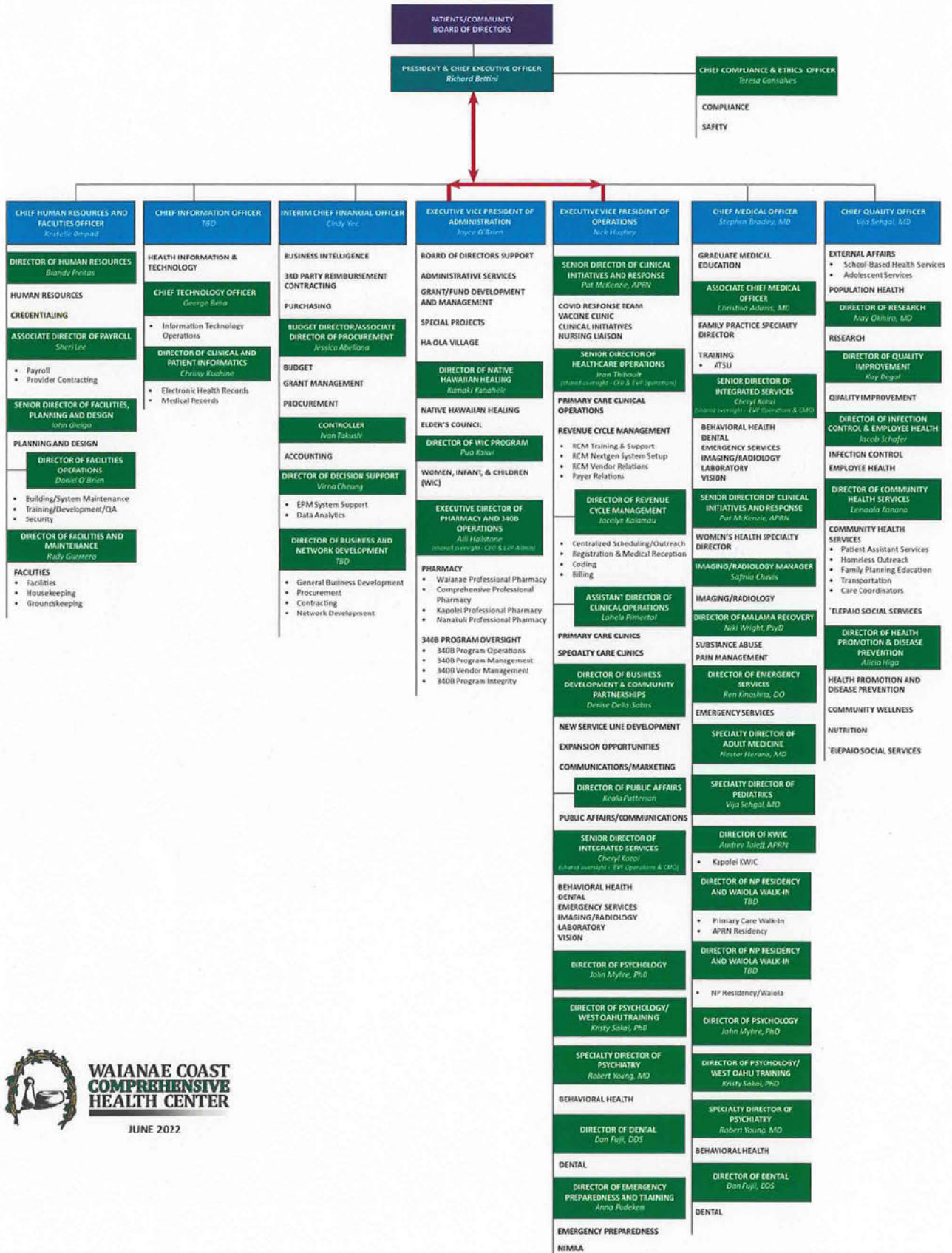
Applicant: Waianae Coast Comprehensive Health Center

Contracts Total:

12,313,231

	<b>CONTRACT DESCRIPTION</b>	<b>EFFECTIVE DATES</b>	<b>AGENCY</b>	<b>GOVERNMENT ENTITY (U.S./State/Hawaii/ Honolulu/ Kauai/ Maui County)</b>	<b>CONTRACT VALUE</b>
1	Optimizing Virtual Care	03/01/2022-02/29/2024	HRSA	Federal	2,000,000
2	Security Gate/Parking Expansion	09/15/2021-09/14/2024	HRSA	Federal	925,689
3	School Based Expansion	05/01/2022-04/30/2024	HRSA	Federal	200,000
4	Primary Care	07/01/2019-06/30/2025	State of Hawaii Department of Health	State	Rate Schedule
5	Midnight to 8am ER Subsidy	07/01/2020-06/30/2024	State of Hawaii Department of Health	State	5,872,000
6	Teaching Health Center-Planning	12/01/2021-11/30/2023	HRSA	Federal	472,834
7	Community Health Center Operations	02/01/2023-01/31/2024	HRSA	Federal	2,842,708
8					
9					
10					
11					
12					
13					
14					
15					
16					
17					
18					
19					
20					
21					
22					
23					
24					
25					
26					
27					
28					
29					
30					

**WAIANAЕ COAST COMPREHENSIVE HEALTH CENTER  
ORGANIZATIONAL CHART**



JUNE 2022