

**THE THIRTIETH LEGISLATURE  
APPLICATION FOR GRANTS  
CHAPTER 42F, HAWAII REVISED STATUTES**

Type of Grant Request:

Operating                       Capital

Legal Name of Requesting Organization or Individual:    Db:

Kualoa-Heeia Ecumenical Youth Project

Amount of State Funds Requested: \$ 200,000

Brief Description of Request (Please attach word document to back of page if extra space is needed):

KEY Project proposes, with the support of the 2023 Grant-in-Aid, funding for the growth of our Hoopilina Youth Program in its second year of programming. The program mission for the Ho'opilina Youth Program is to empower youth in grades 6-8 with enduring skills and knowledge that can assist in a successful transition through life. The upcoming year has new goals to increase protective factors against adverse childhood experiences, empower youth and families to cultivate Hawai'i's cultural practices, and continue to hold our status of a safe community resilience hub. +

Amount of Other Funds Available:

State:                      \$ \_\_\_\_\_

Federal:                      \$ \_\_\_\_\_

County:                      \$ \_\_\_\_\_

Private/Other: \$ 603,302

Total amount of State Grants Received in the Past 5 Fiscal Years:

\$ 429,775.94

Unrestricted Assets:

\$ 570,262

New Service (Presently Does Not Exist):     Existing Service (Presently in Operation):

Type of Business Entity:

- 501(C)(3) Non Profit Corporation
- Other Non Profit
- Other

Mailing Address:

47-200 Waihee Rd.

City:    State:    Zip:

Kaneohe    HI    96744

Contact Person for Matters Involving this Application

Name:  
Rainbow Ulii

Title:  
Executive Director

Email:  
impact@keyproject.org

Phone:  
(808)239-5777

Federal Tax ID#:

██████████

State Tax ID#

██████████████████



Authorized Signature

Rainbow Ulii- Executive Director

Name and Title

1-20-2023

Date Signed

## Application Submittal Checklist

*The following items are required for submittal of the grant application. Please verify and check off that the items have been included in the application packet.*

- 1) Certificate of Good Standing (If the Applicant is an Organization)
- 2) Declaration Statement
- 3) Verify that grant shall be used for a public purpose
- 4) Background and Summary
- 5) Service Summary and Outcomes
- 6) Budget
  - a) Budget request by source of funds ([Link](#))
  - b) Personnel salaries and wages ([Link](#))
  - c) Equipment and motor vehicles ([Link](#))
  - d) Capital project details ([Link](#))
  - e) Government contracts, grants, and grants in aid ([Link](#))
- 7) Experience and Capability
- 8) Personnel: Project Organization and Staffing

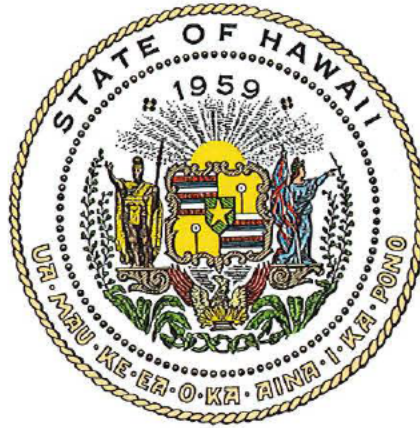
AUTHORIZED SIGNATURE

Rainbow Wai Executive Director

PRINT NAME AND TITLE

1/20/2023

DATE



## Department of Commerce and Consumer Affairs

### CERTIFICATE OF GOOD STANDING

I, the undersigned Director of Commerce and Consumer Affairs of the State of Hawaii, do hereby certify that

#### KUALOA-HEEIA ECUMENICAL YOUTH PROJECT

was incorporated under the laws of Hawaii on 06/10/1968 ; that it is an existing nonprofit corporation; and that, as far as the records of this Department reveal, has complied with all of the provisions of the Hawaii Nonprofit Corporations Act, regulating domestic nonprofit corporations.

IN WITNESS WHEREOF, I have hereunto set my hand and affixed the seal of the Department of Commerce and Consumer Affairs, at Honolulu, Hawaii.

Dated: November 16, 2022

Director of Commerce and Consumer Affairs



## Application for Grants

*If any item is not applicable to the request, the applicant should enter "not applicable".*

### **I. Certification – Please attach immediately after cover page**

#### **1. Certificate of Good Standing (If the Applicant is an Organization)**

If the applicant is an organization, the applicant shall submit one (1) copy of a certificate of good standing from the Director of Commerce and Consumer Affairs that is dated no earlier than December 1, 2022.

#### **2. Declaration Statement**

The applicant shall submit a declaration statement affirming its compliance with [Section 42F-103, Hawaii Revised Statutes](#).

#### **3. Public Purpose**

The applicant shall specify whether the grant will be used for a public purpose pursuant to [Section 42F-102, Hawaii Revised Statutes](#).

Our mission of KEY Project is to nurture and promote the cultural, environmental, social, economic and recreational well-being of the Kualoa-He'eia area by providing a grassroots civic resource that effectively serves the needs of our diverse multicultural community. Over the past five decades KEY Project has been an active leader in serving a public purpose by carrying out our mission to support the specific needs of our community. At the same time, our partnerships and collaborations validate our efforts to not only serve our community, but to share our values of public service at home and beyond.

### **II. Background and Summary**

This section shall clearly and concisely summarize and highlight the contents of the request in such a way as to provide the State Legislature with a broad understanding of the request. Please include the following:

1. A brief description of the applicant's background; Kualoa-He'eia Ecumenical Youth (KEY) Project is a 501(c)(3) non-profit organization in Kāne'ohe. Since 1968, the agency has worked to serve and empower youth and families living throughout the diverse ahupua'a along the Windward coast from Northern Ko'olaupoko to Ko'olauloa. KEY Project's mission is to nurture and promote cultural, environmental, social, economic, and recreational well-being by providing a vital grassroots civic resource that serves a diverse multicultural community. We are a critical

community resource center serving vulnerable keiki to kūpuna and have provided social services, programs, and essential meeting spaces to our rural windward community for over 55 years. KEY is a high functioning multi-purpose facility, with a long history of impactful partnerships and collaborations, and a robust financial and project management system. The nature of our community still thrives with agrarian essence and cultural values.

KEY Project's secondary mission of Pono Social Community Development involves the essential principle of implementing the culture and tradition of laulima, "many hands working together," which incorporates communication, coordination, and cooperation. This vision is driving the efforts to develop new programming to meet the needs of cultural preservation and bring the community together to enhance the process.

The Ho'opilina Youth Program, the Nā Pua O Ko'olau Kūpuna Program, and the Living Library are the three pillar programs at KEY Project and each program supports a specific population in KEY's service area. KEY Project proposes, with the support of the 2023 Grant-in-Aid, the funding for the Ho'opilina Youth Program. The Ho'opilina Youth Program is on a growth trajectory as it emerged back from the COVID-19 pandemic. The structure of the program is designed to increase exposure and promotion of 'āina aloha concepts to transform and support community-based values and systems, and combat Adverse Childhood Experiences (ACE) within our service area. KEY Project aims to maintain the status of being an inclusive and accessible community hub through the Ho'opilina Youth Program.

2. The goals and objectives related to the request;

The goals and objectives through this grant will support the KEY Project - Ho'opilina Youth Program to implement continued experiential opportunities in response to requests for increased 'āina and culturally based youth programming which were identified in a 2021 Community Needs Assessment by 42% of respondents. Through additional qualitative data collection, the need for programs that support combating ACEs through building stronger families was identified. In its second year of programming, KEY's Ho'opilina Youth Program doubled in size, interest, 'ohana event registration, and capacity for intersession participants. The continued expansion of the programming funded through this grant will build onto the foundation of current cultural activities that specifically target the development of cultural identity. Youth will participate in a variety of experiences designed to build personal relationships and sense of place within the Ko'olau region of O'ahu. Coupled with six weeks of intersession programming a year, the 'Ohana events are designed to increase community protective factors through building stronger families. In addition, structured program events where families have access to safe childcare, engaging after school programs, and culturally relevant activities will allow residents to feel connected to each other and remain involved in the community. These traits also encourage strong

partnerships between families and community support services, representing the protective factors KEY Project aims to develop through 'Ohana events. The participants and 'ohana will build (1) pilina (relationships) by assisting in partner-led culturally focused projects along the coast; (2) mana'o (knowledge), through intergenerational discussions with kūpuna and exposure to mo'olelo and 'oli; and (3) 'ai pono (conscious consumption), by learning and preparing local recipes with food provided from the Ko'olaupoko region.

The specific goals and objectives of this project are outlined below.

Goal 1: Build capacity and empower our 'ōpio (youth) to cultivate Hawai'i's cultural practices and maintain a connected community.

Objective 1: Implement hands-on 'āina programming that encourages pilina for 'ōpio in grades five to eight. Program activities immerse youth in outdoor and indoor challenge experiences and protocols aimed at strengthening a connection to culture, environment, community and self.

Goal 2: Progressively combat ACE of youth in our service district.

Objective 2: Our goal is to develop spaces and opportunities for growth and resiliency to produce healthy outcomes through developing protective factors.

Goal 3: Continue to hold our status of a safe community and resilience hub for 'ōpio and 'ohana that reside within our service area; Kāne'ohe to Kahuku.

Objective 3: Build our commitment to being a community partner for the Castle Complex Area Schools, and actively engage in district school events, activities, and programs.

### 3. The public purpose and need to be served;

The KEY Project Ho'opilina Youth Program serves a public purpose by supporting a safe space for youth to develop their cultural identity, kuleana for their community, and stronger familial values as a direct result of small group 'āina based activities. There is also an emphasis on civic responsibility for youth, families, volunteers, and staff while participating in these KEY Project activities.

2019 Census data was used to gauge the extent of adverse experiences that may impact the youth and families in KEY Project's service district of Kāne'ohe to Kahuku. Compared against known risk factors, the data points that impact windward youth include families with low income, families that are isolated or do not feel connection to others, limited educational opportunities, communities with unstable housing, families that frequently struggle with food insecurity, and high unemployment rates (Center for Disease Control, 2021). Census data reported that more than 50% of the neighborhoods that fall under KEY's service district have achieved a high school diploma and some college credits with no degree awarded. In response to these impacts, we identify a need for intersession and out-of-school programming to assist parents who are working full time, and those with limited familial support.

Youth that have preexisting ACE's have higher risk for chronic illnesses, mental health disorders, and substance abuse (Center for Disease Control, 2021). Prevention and reversal of adverse experiences comes from developing protective factors. The goals of the KEY Project Ho'opilina Youth Program target these risks by creating stronger ties to community, family members, cultural identity, and the 'āina.

KEY Project was chosen to join as a community stakeholder for the Department of Education Castle Schools Complex to improve the social determinants of the youth that are enrolled in the public school system. Using this connection with the public schools based in our service area allows KEY to assist in keeping students engaged during out-of-school periods through the Ho'opilina Youth Program. In addition, the community requests for increased 'āina and Hawaiian culture focused activities generate additional design of the stand-alone 'ohana events which allow for families to be civically engaged and foster protective factors against adverse experiences that are prevalent in the Windward O'ahu community by connecting families to the 'āina and others.

4. Describe the target population to be served;

Our primary service area (Kāne'ohe-Kahuku) has the most immediate access to program opportunities. Students within this area can actively engage in our youth and 'ohana services at KEY.

Connection to 'āina serves a valuable component to Native Hawaiian health. The connection to the physical environment and the design of the community in which we live helps facilitate the development of cultural identity. Due to the long standing reputation of KEY project in effectively serving the community, youth programming has been able to leverage a strong community network to grow participation. Based on the numbers that were gathered from the 2019 Census data, there are 5,950 youth residing in the KEY service area. An estimated 38% of this population make up the target population of 'ōpio in grades five thru eight.

The KEY Project Ho'opilina Youth Program will devote efforts to this subpopulation by focusing on 'āina education, culture, and connection to community to build relationships and foster a sense of place in the Ko'olau region.

5. Describe the geographic coverage.

Located at 47-200 Waihe'e Rd. Kāne'ohe 96744, KEY Project's geographical service area includes the whole of northern Ko'olaupoko and the urban-fringe/semi-rural communities situated within and between He'eia and Kualoa. While KEY is conveniently located near urban Kāne'ohe town, our service region still retains much of the open space and agrarian character that has been called home to many over several generations. We are resource rich in ways that are still very much appreciated and valued because the communities we serve are surrounded by many kahawai (streams),

lo'i kalo (taro fields), and healthy oceans that promote sustainability and subsistence. Our community center serves families beyond Kualoa, along the windward coast throughout the adjacent moku of Ko'olauloa.

KEY's geographic coverage includes a culturally and economically diverse area. As reported in 2019 Census data, the neighborhoods that exist in KEY's service area have higher costs of living and contribute higher rates of income towards housing compared to the Hawai'i state average. Additionally, unemployment rates in this service district are well above the state average. The neighborhoods included in the service area are Hawai'i Public Housing Authority (HPHA) complex in northern Ko'olaupoko district, Ahuimanu, He'eia, Kahalu'u, Waiāhole, Ka'alaea, Waikāne, Hakipu'u, and Kualoa. This project's targeted group is aimed at youth within KEY's geographic service area, which includes the coastline within Kāne'ohe Bay (96744) and the adjacent moku of Ko'olauloa, as well as youth from the Castle Complex Area Schools.

### **III. Service Summary and Outcomes**

The Service Summary shall include a detailed discussion of the applicant's approach to the request. The applicant shall clearly and concisely specify the results, outcomes, and measures of effectiveness from this request. The applicant shall:

1. Describe the scope of work, tasks and responsibilities;

The goals and objectives that have been outlined previously are the leading factors of identifying program tasks and responsibilities. KEY Project's Ho'opilina Youth Program is designed to address community requests for more land, culture, and health focused programming. This will be provided in two main formats. The first will be a full-day and week-long youth program during school intersessions (Spring, Summer, and Fall break) to fill a gap in available educational opportunities; the second will be two 'ohana engagement events each month. These events will be built to foster deeper connections to family, community, and the land. 'Ohana events may include holiday celebrations, māla (garden) workdays, ku'i (poi-pounding) nights, educational movie nights, and demonstrations from community partner organizations. 'Ohana events may also include volunteer opportunities that will be focused on furthering projects that cultivate the unique cultural and community resources of the Ko'olau coast such as lo'i, loko i'a, heiau, farms, and community gathering spaces.

All methods of community outreach will be designed to reinforce a strong sense of place within the Ko'olau region of O'ahu and build skills, resilience, and interpersonal networks in our community. Through the Hawaiian framework of Maui Ola, KEY Project understands that when addressing health concerns, we have to examine the health and wellbeing of our families, community, and 'āina. Our goal is to develop spaces and opportunities for growth and resiliency for healthy outcomes. The KEY Project



Ho‘opilina Youth Program ‘ohana engagement events are designed to connect families to the youth in multiple dimensions, while also promoting health and well-being.

The full-day programming will be during intersessions from the Castle Complex Area Schools. The hours of these week-long sessions will be 8am-2pm, Monday through Friday. During these sessions, the participants will be provided with nutritious lunches. ‘Ohana events will be offered on varying days and times throughout the month. The focus of ‘ohana events will range from promoting quality time with family, connectedness with our neighbors, or caring for the community.

2. Provide a projected annual timeline for accomplishing the results or outcomes of the service;

Month	Multi-Day Programming	Event Programming
January	Finalize Program Design and Partner Outreach	2 ‘ohana engagement events each month
February	Participant Recruitment	2 ‘ohana engagement events each month
March	Spring Intersession Programming Implementation	2 ‘ohana engagement events each month
April	Program review and redesign Partner outreach for Summer	2 ‘ohana engagement events each month
May	Solidify Summer program, participants, and partners	2 ‘ohana engagement events each month
June	Summer Intersession Programming Implementation (Session 1)	2 ‘ohana engagement events each month
July	Summer Intersession Programming Implementation (Session 2)	2 ‘ohana engagement events each month
August	Program review and redesign Partner outreach for fall	2 ‘ohana engagement events each month
September	Solidify Fall program, participants, and partners	2 ‘ohana engagement events each month
October	Fall Intersession Programming Implementation	2 ‘ohana engagement events each month
November	Program review and redesign	2 ‘ohana engagement events each month
December	Thorough evaluation and outcome assessment	2 ‘ohana engagement events each month

3. Describe its quality assurance and evaluation plans for the request. Specify how the applicant plans to monitor, evaluate, and improve their results; and

As a community focused organization, KEY Project will consistently be available for feedback on programming possibilities through surveys and interviews. With a focus on programming during the Hawai'i DOE school breaks, there is ample opportunity for the integration of community input into each successive iteration.

Evaluation strategies will straddle both quantitative surveys and qualitative interviews with program participants, participants in other KEY Project events, and non-participating community members within staff networks. Hō'ike, or community sharing of learned information, will be a capstone part of each multi-day programming session.

Planned data collection tools include:

- 1) Attendance sheets and completed program registration forms will collect participation data for full day intersessions and 'ohana event programming.
- 2) Community Hō'ike opportunities offer space for qualitative assessment of knowledge and depth of understanding gained by participants as they share their knowledge with the broader community.
- 3) Post event surveys with participant self-assessments of knowledge covered during the session
- 4) Suggestion forms delivered after the programming requesting feedback on facilitation, timing, and future topics to be covered.
- 5) Community impact reporting of participant volunteer work.

Program review, redesign, and outreach following each deployment of inter-session programs will be based on the data collected from participants and KEY Project community members. The community impact will be available for showcase in the KEY Project annual reporting for participant viewing.

4. List the measure(s) of effectiveness that will be reported to the State agency through which grant funds are appropriated (the expending agency). The measure(s) will provide a standard and objective way for the State to assess the program's achievement or accomplishment. Please note that if the level of appropriation differs from the amount included in this application that the measure(s) of effectiveness will need to be updated and transmitted to the expending agency.

Our proposed performance measures are used to track the effectiveness of our program by aligning our outputs to our goals and objectives. There are detailed outputs and outcomes for both full-day programming and event programming. The outputs show the efforts provided by the KEY Project Ho'opilina Youth Program staff. Outcomes are the desired result following the completion of the programming.

Connecting youth and families to the ‘āina, being rooted in Hawaiian identity, and developing protective factors are key ways to address the social determinants of health and adverse childhood experiences. The concepts and activities that we propose as outcomes are ways that we can reach goals. We are confident that these performance measures are realistic and achievable within the time span of this grant period.

**Full-Day Intersession Programming**

<b>Outputs</b>	
Total number of participants for intersession	25
Total number of intersessions per contract period	4
Total number of participants per contract period	100
Youth and families feel rooted in Hawaiian Identity	100
Youth develop protective factors	100
<b>Outcomes</b>	
Total number of participants who completed the program	100
Participants attend a community work day or community workshop	100
Students exposed to concepts that surround culture, education and ‘āina	100

**‘Ohana Event Single-Day Programming**

<b>Outputs</b>	
Total number of individual participants in single-day programming	400
Total number of ‘Ohana events per contract period	18
Total number of partner agencies for event days per contract period	5
Youth and families feel rooted in Hawaiian Identity	40
Families offer volunteer services to their community	40
<b>Outcomes</b>	
Total number of participants per contract period	400
Participants attend a community work day or community workshop	100
Families exposed to concepts that surround culture, education and ‘āina	100

**IV. Financial**

**Budget**

1. The applicant shall submit a budget utilizing the enclosed budget forms as applicable, to detail the cost of the request.
  - a. Budget request by source of funds (Link)
  - b. Personnel salaries and wages (Link)
  - c. Equipment and motor vehicles (Link)
  - d. Capital project details (Link)
  - e. Government contracts, grants, and grants in aid (Link)
2. The applicant shall provide its anticipated quarterly funding requests for the fiscal year 2024.

Quarter 1	Quarter 2	Quarter 3	Quarter 4	Total Grant
\$50,000	\$50,000	\$50,000	\$50,000	\$200,000

3. The applicant shall provide a listing of all other sources of funding that they are seeking for fiscal year 2024.

1. New York Life Foundation: 2023 Aim High: Supporting Out-of-School Time Programs Serving Middle School Youth Grant-\$50,000.

4. The applicant shall provide a listing of all state and federal tax credits it has been granted within the prior three years. Additionally, the applicant shall provide a listing of all state and federal tax credits they have applied for or anticipate applying for pertaining to any capital project, if applicable.

Not Applicable.

5. The applicant shall provide a listing of all federal, state, and county government contracts, grants, and grants in aid it has been granted within the prior three years and will be receiving for fiscal year 2024 for program funding.

See Attachment.

6. The applicant shall provide the balance of its unrestricted current assets as of December 31, 2022.

Unrestricted Net Assets as of January 20th 2023 is \$1,616,186.

## **V. Experience and Capability**

### **1. Necessary Skills and Experience**

The applicant shall demonstrate that it has the necessary skills, abilities, knowledge of, and experience relating to the request. State your experience and appropriateness for

providing the service proposed in this application. The applicant shall also provide a listing of verifiable experience of related projects or contracts for the most recent three years that are pertinent to the request.

Community members in the service area view KEY's community center - and the sites we visit, with chaperones/mentors - as "kīpuka" or safe havens. This is in keeping with the sense of place we have consistently promoted in the Civic Center that surrounds and includes KEY - the *piko of our community*. KEY's state-of-the-art facilities, equipped with SMART Boards, Computer Learning Center, web conferencing, a State-certified commercial kitchen, and large-scale screening and presentation capabilities complement all the above. KEY also has the ability to extend into non-school hours with activities, curriculum support and unique learning opportunities. An especially unique benefit for participants in this program and for those with whom we partner is KEY's Memorandum of Understanding (2003) with the Honolulu Board of Water Supply, which allows access to crucial outdoor classrooms and ecological systems mauka and makai in Waihe'e ahupua'a.

KEY Project's experience, supportive staff, and strategically-located facilities have positioned our agency for effective delivery of services and access to resources for the target population and proposed project. KEY Projects Ho'opilina Youth Program will continue engaging youth to teach the critical skills related to culture, farming, and nutrition education. The program mission for the Ho'opilina Youth Program is to empower youth with enduring skills and knowledge that can assist in a successful transition through life.

KEY Project has successfully hosted multiple youth programs since it opened its doors over 50 years ago. Brief descriptions to demonstrate staff and organization capacity are listed below.

Examples of past youth programs include:

1. The *Summer Cultural Heritage Program*, a successful 30-year program for elementary-age youth
2. The *Teen to Work Program*, a 10-year collaboration with Alu Like, Inc. and the Queen Lili'uokalani Children's Center, provided work experience on-site for over 25 youth annually (ages 16-21) — an opportunity to gain employable/life skills and explore career pathways
3. *Hoohuli Competency Based High School Diploma Program (CBASED)* operated at KEY for over five years as an alternative path to earn a high school diploma for youth ages 16 and above, a springboard to career choices and for many a "light at the end of the tunnel". In conjunction with a five-unit curriculum (focused on practical knowledge), students were coached in skill-strengthening activities to enhance: career choices, higher education options, and technical skills opportunities with the *Kuder Online Career Planning System*; KEY's state of the art *Computer Learning Center*.

4. *The KEY Project Ho'opilina Youth Program*, only in its second year of programming, the Ho'opilina Youth Program is focused on increasing intersession options for keiki in grade levels five to eight, a pivotal point in a child's development. The program is projected to double in size over the next year due to the community demand and increased staffing capacity.

## 2. Facilities

The applicant shall provide a description of its facilities and demonstrate its adequacy in relation to the request. If facilities are not presently available, describe plans to secure facilities.



KEY Project is a large multi-purpose community center hosting a variety of facilities designed by the Kahalu'u community in the 1960's. The diversity of spaces allow for extreme flexibility in activities and implementation strategies to accommodate public-health regulations while continuing to ensure a quality youth experience and the programmatic

outcomes. KEY Project fully transitioned back to on-site and in-person programming for 2023 to allow for continued physical, social, and emotional outlets for youth and 'ohana.

These facilities currently include:

1. A certified commercial kitchen (460 sq ft) distribution of food for programming, and the creation of value added products. This kitchen is also available for community member use;
2. Large pavilion (stated capacity of 250) connected to the kitchen and outfitted with audio-visual capacity and room enough for community/'ohana events, conferences and public meetings, area church and club use, early childhood programming and community hō'ike events serving as authentic assessments of youth learning and development.
3. Well-equipped meeting rooms with ranging maximum capacity to accommodate all group sizes.
4. A computer learning center and classrooms with excellent IT capacity in a connected two-story structure (with elevator). These classrooms have been used for cooking demonstrations, rainy-day activities, and community discussions.



5. An Administrative Building at the center of the complex where agency staff work and walk-in services are provided for all ages;
6. An open portico and large private parking area, connected to additional parking in nearby Kahalu'u Regional Park below and surrounding the multi-purpose center
7. An area mauka of KEY, belonging to the City, has also been cleared, maintained and utilized on site as a māla or farm/garden by the Ho'opilina Youth Program, *kupuna* (seniors) and volunteers - with a small nursery for plant propagation, aquaponics and other learning options.
8. **The entire facility is connected to surrounding park lands and is ADA accessible and occupies a footprint of 10,740 sq ft.** Our connection to surrounding parklands is "seamless". The entire site is mauka of the floodplain and Special Management Area. Situated as we are, within the Kāne'ohē Bay area, KEY's site is well-protected with respect to *tsunamis*.
9. Finally, Kahalu'u Fire Station is located a few hundred yards mauka, on widened Waihe'e Road, just above Kahalu'u Elementary School, ensuring rapid "first response" during emergencies.



**ACCESS TO OTHER SITES/FACILITIES:** In addition to the strategically located multi-purpose community center on Waihe'e Road, KEY has excellent access to various nearby outdoor learning sites through relationships with fellow organizations/entities and/or more formal agreements that have evolved over our 55 years of service in this community. Example partner environmental organizations with an educational focus within a 30 minute drive of our facilities include Waihe'e Farm, Paepae o He'eia, Papahana Kuaola, Windward Community College, Ho'omaika'i Hālau, Kauluakalana, Kualoa Ranch, and more. KEY Project has long standing relationships and trust in the cultural significance and educational rigor of these teaching partners. These partners will be introduced to the KEY Project community as both field trips and guest speakers in both multi-day and stand-alone 'ohana event programming.

## **VI. Personnel: Project Organization and Staffing**

### **1. Proposed Staffing, Staff Qualifications, Supervision and Training**

The applicant shall describe the proposed staffing pattern and proposed service capacity appropriate for the viability of the request. The applicant shall provide the qualifications and experience of personnel for the request and shall describe its ability to supervise, train and provide administrative direction relative to the request.

KEY Project's Ho'opilina Youth Program will have the competent staff of the Executive Director and Executive Administrator in supervisory roles. The Community Development Coordinator, in partnership with the Ho'opilina Youth Program Coordinator, will be in direct service positions for programming. Additional staff will be called upon to connect relevant community partners for program activities and trips.

**Executive Director: Rainbow Uli'i-** graduated from the University of Hawai'i at West O'ahu with two Bachelor's Degrees in Social Science with a concentration in Political Science and Applied Science with a concentration in Sustainable Community Food Systems. In May 2022, Rainbow also received her Master's Degree in Urban and Regional Planning from UH Mānoa. She has previously worked as a Hawaiian Studies teacher at Sunset Beach Elementary School, and taught 'āina-based education with Kōkua Hawai'i Foundation at elementary schools across the Windward side of O'ahu. More recently, Rainbow served as the University of Hawai'i System Student Basic Needs Coordinator where she helped connect college students to resources and services that would allow them to meet their basic needs. She has been Executive Director since December of 2022.

**Executive Administrator: Kehaulani Volhein-** Graduated with a BA in Business Administration from Chaminade University in 1999. Previous positions include expertise in high level customer service, hospitality, human resources, event coordination, administrative and operational management. She also serves on the Board of Directors for nonprofit Dancers Unlimited. Her current role at KEY includes overseeing day to day operations, programs, and facilities, while also managing fiscal and human resources responsibilities.

**Community Development Coordinator: Joseph Hnatusko Wat** - Graduated with a BS in Biology and BA in Chinese Language and Culture from Tufts University in 2013. He has 7+ years of leading youth through educationally rigorous nutrition and gardening experiences for a diverse range of participants. Previously, with the Kōkua Hawai'i Foundation, he co-led 48 farm workdays with 921 participating unique volunteers. He also developed and piloted two internship sessions (12 participants Spring 2021, 14 participants Fall 2021) for high school students based off of the GoFarm Hawai'i Farmer Training program. Joseph will be designing and co-facilitating programming and program evaluations in partnership with the Ho'opilina Youth Program Coordinator.

**Ho'opilina Youth Program Coordinator: Kimberley Jones** - Her academic background includes a MA in Reading Instruction and a BA in Early Childhood Education with a focus on print journalism. As a previous DOE 6th grade teacher at Aikahi Elementary School, Kimberley is fluent in curriculum planning and program implementation. In partnership with the Community Development Coordinator, the Ho'opilina Youth Program Coordinator will manage day to day operations of the designed youth programming.

**Executive Director Emeritus and Community Outreach: John Reppun-** has 30 years of experience in program creation, implementation, and delivery with KEY

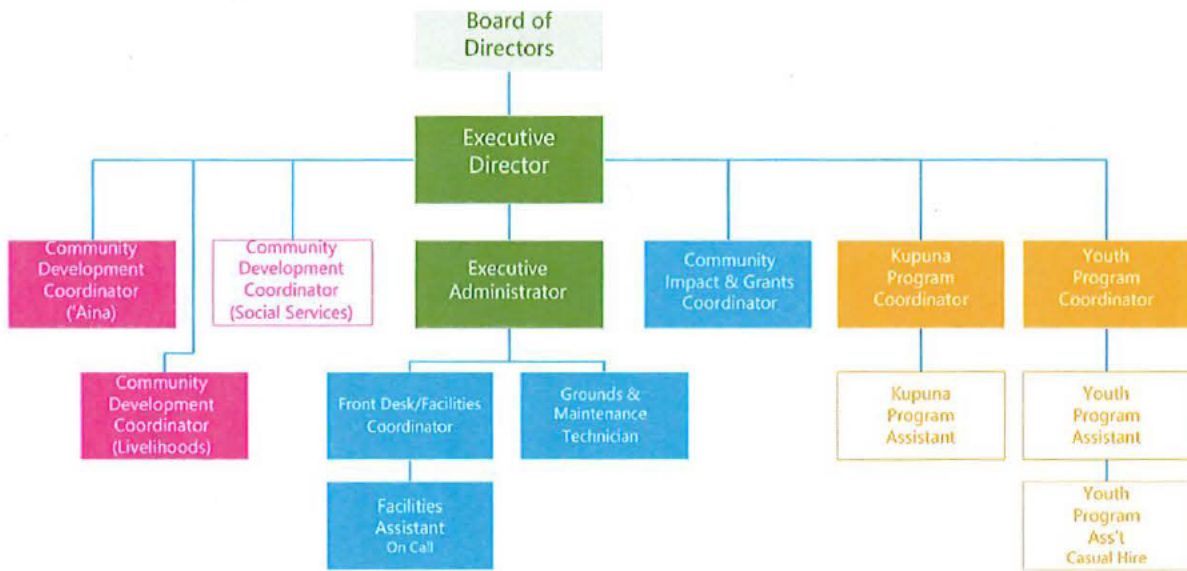


Project. He has extensive experience in community building both through KEY and for the greater community as well. His relationships, work, and advocacy on behalf of the district is an important asset that will help the Ho'opilina Youth Program to connect with project partners and develop value-added collaborative programming.

## 2. Organization Chart

The applicant shall illustrate the position of each staff and line of responsibility/supervision. If the request is part of a large, multi-purpose organization, include an organization chart that illustrates the placement of this request.

Kualoa - He'eia Ecumenical Youth (KEY) Project  
Organizational Chart



As of 1/11/2023

## 3. Compensation

The applicant shall provide an annual salary range paid by the applicant to the three highest paid officers, directors, or employees of the organization by position title, not employee name.

- Executive Director- \$80,000
- Executive Administrator - \$70,000
- Community Impact & Grants Coordinator- \$60,000

## **VII. Other**

### **1. Litigation**

The applicant shall disclose any pending litigation to which they are a party, including the disclosure of any outstanding judgment. If applicable, please explain.

Not Applicable.

### **2. Licensure or Accreditation**

The applicant shall specify any special qualifications, including but not limited to licensure or accreditation that the applicant possesses relevant to this request.

Not Applicable.

### **3. Private Educational Institutions**

The applicant shall specify whether the grant will be used to support or benefit a sectarian or nonsectarian private educational institution. Please see [Article X, Section 1, of the State Constitution](#) for the relevance of this question.

Not Applicable.

### **4. Future Sustainability Plan**

The applicant shall provide a plan for sustaining after fiscal year 2023-24 the activity funded by the grant if the grant of this application is:

- (a) Received by the applicant for fiscal year 2023-24, but
- (b) Not received by the applicant thereafter.

KEY Project's strategic plan includes diversifying funding sources for our three pillar programs, Na Pua O Ko'olau, the Living Library, and the Ho'opilina Youth Program. Currently, all of the programs are reliant on single sources of county and state funding. The diversification of funders to both private foundations and government funding, lowering our overhead costs, and building models within the programs to generate higher levels of earned income, will allow for sustainability.

Indirect ways generating revenue to support programming include maximizing facility use and securing long-term facility users who act as anchor partners. Several partnerships and long-term users like the Ho'omaika', and Hope Chapel Kahalu'u, offer our organization the ability to maximize use of its space while providing social, cultural

and spiritual benefits to KEY's service area. We expect to see continual growth in staple partnerships for facilities use. Our facility is our biggest asset and we continue to generate creative ways of utilizing our space through hosting community partners and growing our footprint.

**DECLARATION STATEMENT OF  
APPLICANTS FOR GRANTS PURSUANT TO  
CHAPTER 42F, HAWAII REVISED STATUTES**

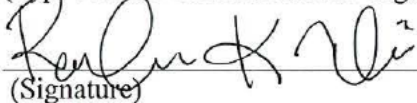
The undersigned authorized representative of the applicant certifies the following:

- 1) The applicant meets and will comply with all of the following standards for the award of grants pursuant to Section 42F-103, Hawaii Revised Statutes:
  - a) Is licensed or accredited, in accordance with federal, state, or county statutes, rules, or ordinances, to conduct the activities or provide the services for which a grant is awarded;
  - b) Complies with all applicable federal and state laws prohibiting discrimination against any person on the basis of race, color, national origin, religion, creed, sex, age, sexual orientation, or disability;
  - c) Agrees not to use state funds for entertainment or lobbying activities; and
  - d) Allows the state agency to which funds for the grant were appropriated for expenditure, legislative committees and their staff, and the auditor full access to their records, reports, files, and other related documents and information for purposes of monitoring, measuring the effectiveness, and ensuring the proper expenditure of the grant.
- 2) If the applicant is an organization, the applicant meets the following requirements pursuant to Section 42F-103, Hawaii Revised Statutes:
  - a) Is incorporated under the laws of the State; and
  - b) Has bylaws or policies that describe the manner in which the activities or services for which a grant is awarded shall be conducted or provided; and
- 3) If the applicant is a non-profit organization, it meets the following requirements pursuant to Section 42F-103, Hawaii Revised Statutes:
  - a) Is determined and designated to be a non-profit organization by the Internal Revenue Service; and
  - b) Has a governing board whose members have no material conflict of interest and serve without compensation.
- 4) The use of grant-in-aid funding complies with all provisions of the Constitution of the State of Hawaii (for example, pursuant to Article X, section 1, of the Constitution, the State cannot provide "... public funds ... for the support or benefit of any sectarian or nonsectarian private educational institution...").

Pursuant to Section 42F-103, Hawaii Revised Statutes, for grants used for the acquisition of land, when the organization discontinues the activities or services on the land acquired for which the grant was awarded and disposes of the land in fee simple or by lease, the organization shall negotiate with the expending agency for a lump sum or installment repayment to the State of the amount of the grant used for the acquisition of the land.

Further, the undersigned authorized representative certifies that this statement is true and correct to the best of the applicant's knowledge.

Kualoa Heeia Ecumenical Youth Project  
(Typed Name of Individual or Organization)

  
(Signature)

1/26/2023  
(Date)

Rainbow Uli'i Executive Director  
(Typed Name) (Title)

## BUDGET REQUEST BY SOURCE OF FUNDS

Period: July 1, 2023 to June 30, 2024

App Kualoa Heeia Ecumenical Youth Project

BUDGET CATEGORIES	Total State Funds Requested (a)	Total Federal Funds Requested (b)	Total County Funds Requested (c)	Total Private/Other Funds Requested (d)
<b>A. PERSONNEL COST</b>				
1. Salaries	79,030			
2. Payroll Taxes & Assessments	7,310			
3. Fringe Benefits	17,959			
<b>TOTAL PERSONNEL COST</b>	<b>104,299</b>			
<b>B. OTHER CURRENT EXPENSES</b>				
1. Airfare, Inter-Island				
2. Insurance				
3. Lease/Rental of Equipment				
4. Lease/Rental of Space				5,000
5. Staff Training				
6. Supplies	26,968			15,000
7. Telecommunication				
8. Utilities				5,000
9. Contract Services	23,733			
10. Program Activities	5,000			
11. Transportation	20,000			
12. Food	20,000			
13				
14				
15				
16				
17				
18				
19				
20				
<b>TOTAL OTHER CURRENT EXPENSES</b>	<b>95,701</b>			<b>25,000</b>
<b>C. EQUIPMENT PURCHASES</b>				
<b>D. MOTOR VEHICLE PURCHASES</b>				
<b>E. CAPITAL</b>				
<b>TOTAL (A+B+C+D+E)</b>	<b>200,000</b>			<b>25,000</b>
<b>SOURCES OF FUNDING</b>		Budget Prepared By:		
(a) Total State Funds Requested	200,000	<div style="display: flex; justify-content: space-between;"> <span><i>Rainbow Wili</i></span> <span>808 380 1376</span> </div>		
(b) Total Federal Funds Requested	0	Name (Please type or print) <span style="float: right;">Phone</span>		
(c) Total County Funds Requested	0	<div style="display: flex; justify-content: space-between;"> <span><i>Pailua K. Wili</i></span> <span>1/20/2023</span> </div>		
(d) Total Private/Other Funds Requested	25,000	Signature of Authorized Official <span style="float: right;">Date</span>		
<b>TOTAL BUDGET</b>	<b>225,000</b>	<div style="display: flex; justify-content: space-between;"> <span><i>Executive Director</i></span> </div>		
		Name and Title (Please type or print)		



Applicant: \_\_Kualoa Heeia Ecumenical Youth Project\_\_

DESCRIPTION EQUIPMENT	NO. OF ITEMS	COST PER ITEM	TOTAL COST	TOTAL BUDGETED
			\$ -	
			\$ -	
			\$ -	
			\$ -	
			\$ -	
TOTAL:				

JUSTIFICATION/COMMENTS: Not applicable

DESCRIPTION OF MOTOR VEHICLE	NO. OF VEHICLES	COST PER VEHICLE	TOTAL COST	TOTAL BUDGETED
			\$ -	
			\$ -	
			\$ -	
			\$ -	
			\$ -	
TOTAL:				

JUSTIFICATION/COMMENTS: Not Applicable

Applicant: \_Kualoa Heeia Ecumenical Youth Pr

**FUNDING AMOUNT REQUESTED**

TOTAL PROJECT COST	ALL SOURCES OF FUNDS RECEIVED IN PRIOR YEARS		STATE FUNDS REQUESTED	OTHER SOURCES OF FUNDS REQUESTED	FUNDING REQUIRED IN SUCCEEDING YEARS	
	FY: 2021-2022	FY: 2022-2023	FY:2023-2024	FY:2023-2024	FY:2024-2025	FY:2025-2026
PLANS						
LAND ACQUISITION						
DESIGN						
CONSTRUCTION						
EQUIPMENT						
TOTAL:						

JUSTIFICATION/COMMENT Not Applicable



**GOVERNMENT CONTRACTS, GRANTS, AND / OR GRANTS IN AID**

App: Kualua Heeia Ecumenical Youth Project

Contracts Total: -

	<b>CONTRACT DESCRIPTION</b>	<b>EFFECTIVE DATES</b>	<b>AGENCY</b>	<b>GOVERNMENT ENTITY (U.S./State/Hawaii/ Honolulu/ Kauai/ Maui County)</b>	<b>CONTRACT VALUE</b>
1	N/A				
2					
3					
4					
5					
6					
7					
8					
9					
10					
11					
12					
13					
14					
15					
16					
17					
18					
19					
20					
21					
22					
23					
24					
25					
26					
27					
28					
29					
30					