

## Department of Commerce and Consumer Affairs

### CERTIFICATE OF GOOD STANDING

I, the undersigned Director of Commerce and Consumer Affairs of the State of Hawaii, do hereby certify that

**KINGDOM PATHWAYS**

was incorporated under the laws of Hawaii on 03/24/2021 ; that it is an existing nonprofit corporation; and that, as far as the records of this Department reveal, has complied with all of the provisions of the Hawaii Nonprofit Corporations Act, regulating domestic nonprofit corporations.



IN WITNESS WHEREOF, I have hereunto set my hand and affixed the seal of the Department of Commerce and Consumer Affairs, at Honolulu, Hawaii.

Dated: January 20, 2023

Director of Commerce and Consumer Affairs

**DECLARATION STATEMENT OF  
APPLICANTS FOR GRANTS PURSUANT TO  
CHAPTER 42F, HAWAII REVISED STATUTES**

The undersigned authorized representative of the applicant certifies the following:


- 1) The applicant meets and will comply with all of the following standards for the award of grants pursuant to Section 42F-103, Hawaii Revised Statutes:
  - a) Is licensed or accredited, in accordance with federal, state, or county statutes, rules, or ordinances, to conduct the activities or provide the services for which a grant is awarded;
  - b) Complies with all applicable federal and state laws prohibiting discrimination against any person on the basis of race, color, national origin, religion, creed, sex, age, sexual orientation, or disability;
  - c) Agrees not to use state funds for entertainment or lobbying activities; and
  - d) Allows the state agency to which funds for the grant were appropriated for expenditure, legislative committees and their staff, and the auditor full access to their records, reports, files, and other related documents and information for purposes of monitoring, measuring the effectiveness, and ensuring the proper expenditure of the grant.
- 2) If the applicant is an organization, the applicant meets the following requirements pursuant to Section 42F-103, Hawaii Revised Statutes:
  - a) Is incorporated under the laws of the State; and
  - b) Has bylaws or policies that describe the manner in which the activities or services for which a grant is awarded shall be conducted or provided; and
- 3) If the applicant is a non-profit organization, it meets the following requirements pursuant to Section 42F-103, Hawaii Revised Statutes:
  - a) Is determined and designated to be a non-profit organization by the Internal Revenue Service; and
  - b) Has a governing board whose members have no material conflict of interest and serve without compensation.

The use of grant-in-aid funding complies with all provisions of the Constitution of the State of Hawaii (for example, pursuant to Article X, section 1, of the Constitution, the State cannot provide "... public funds ... for the support or benefit of any sectarian or nonsectarian private educational institution...").

Pursuant to Section 42F-103, Hawaii Revised Statutes, for grants used for the acquisition of land, when the organization discontinues the activities or services on the land acquired for which the grant was awarded and disposes of the land in fee simple or by lease, the organization shall negotiate with the expending agency for a lump sum or installment repayment to the State of the amount of the grant used for the acquisition of the land.

Further, the undersigned authorized representative certifies that this statement is true and correct to the best of the applicant's knowledge.

Kingdom Pathways \_\_\_\_\_  
(Typed Name of Individual or Organization)

 \_\_\_\_\_  
(Signature) 1 (Date) JANUARY 20, 2023

Joseph K. Sempliciano Jr. \_\_\_\_\_  
(Typed Name) Chief Executive Officer  
(Title)



# Application for Grants

*If any item is not applicable to the request, the applicant should enter "not applicable".*

## **I. Certification – Please attach immediately after cover page**

### **1. Certificate of Good Standing (If the Applicant is an Organization)**

If the applicant is an organization, the applicant shall submit one (1) copy of a certificate of good standing from the Director of Commerce and Consumer Affairs that is dated no earlier than December 1, 2022.

SEE ATTACHED CERTIFICATE OF GOOD STANDING.

### **2. Declaration Statement**

The applicant shall submit a declaration statement affirming its compliance with [Section 42F-103, Hawaii Revised Statutes](#).

SEE ATTACHED DECLARATION STATEMENT.

### **3. Public Purpose**

The applicant shall specify whether the grant will be used for a public purpose pursuant to [Section 42F-102, Hawaii Revised Statutes](#).

The grant shall be used for a public purpose pursuant to section 42F-102, Hawaii. Revised. Statues.

## **II. Background and Summary**

This section shall clearly and concisely summarize and highlight the contents of the request in such a way as to provide the State Legislature with a broad understanding of the request. Please include the following:

### **1. A brief description of the applicant's background;**

Kingdom Pathways is a Veteran Owned and Operated by 501 (c)(3), a Native Hawaiian Organization that laid the first stone in 2011 and attained a registered LLC in 2020. Kingdom Pathways is a grassroots organization often sought out by fellow Wai'anae Coast community members, organizations, public and private schools, and leaders for their ability to identify, relate to and implement solutions at the lowest level possible.

Kingdom Pathways has bridged the gap between the community and the Departments of the State of Hawai'i and the City and County of Honolulu where no one else has been able to. This ability has led to correcting numerous generational issues, significantly improving the health and welfare of a community with the highest concentration of Native Hawaiians. Kingdom Pathways has received the Honolulu City Council, Honors for our community leadership and advocacy.

Our mission that we are dedicated to achieving is the restoration of environmental and social justice, perpetuating our culture and sustainability through the many ways we have accomplished thus far. Our mission has always derived from these foundational questions: "How are we creating a legacy for the next ten generations of my descendants and the descendants of the community that I live in? How am I making Hawai'i our home, a better place? How am I making the globe a better place?" At the heart of our Hawaiian values is a malama 'aina concept care for the land, and the land will care for you. Our intent has always been community building. The people who make up our Wai'anae Moku are vital in preserving and protecting our culture and historical beauty along the Leeward Coast from Mauka to Makai. We are invoking this through stewardship, education, and participation.

This journey has also led to the protection of our native plants and animal species. Kingdom Pathways initiated a partnership with the State's Historic Preservation Department and the City and County of Honolulu to acknowledge an unmarked heiau called Kū'īlioloa Heiau. Through the efforts of Kingdom Pathways, this once unmarked heiau will now have the proper signage affirming its original name. Along with an informational sign and an art sculpture donated to the mayor's cultural arts program to help educate the Community and its many visitors from all over the world at the same time, Kū'īlioloa Heiau is a seasonal home to Federally protected U'au birds. For the first time in history, we have successfully gained a partnership and program to monitor a population that was never documented with the Department of Forestry and Wildlife and afforded its rightful protection, preservation, and documentation to keep track of its dwindling numbers.

2. The goals and objectives related to the request.

The goal and objective of the Aloha 'Āina program spearheaded by Kingdom Pathways are to continue its mission to eliminate the negative impacts on the environment and community by means of continuous education to the lowest level possible, community-engaged workshops, scheduled cleanups, guest speaking, and related informational content through social media, and email.

As a permittee through the City and County of Honolulu Adopt-A-Park program, Kingdom Pathways will continue to restore and beautify Pōkaī Bay Beach Park by continuing its work for water quality and social issues. Kingdom Pathways, along with Kuleana Coral and the Division of Aquatics Division, will continue with the coral restoration project in Pōkaī Bay, an RFA or Restricted fishing management area aimed at improving marine wildlife numbers and providing self-sustainability to the community. In addition, Kingdom Pathways, alongside the Surfrider Foundation, Wai'anae High School marine science group, and community, will continue to work on the water quality issues at Pōkaī Bay which is generationally known to sicken the community and beachgoers. As stewards to Kū'īlioloa Heiau located in Wai'anae, Hawai'i our tri-monthly cleanups also include our Na Ho'okele (the many navigator's) sculpture gifted to the Mayor's Cultural Arts Program. We have been given the role of caretaker's by Anakala Kamaki Kanahale and the Wai'anae Coast Comprehensive Kupuna Council. This grant will assist in the perpetuation of the Heiau's beauty and rich history. Kingdom Pathways intend to host workshops aimed at the practical uses of the heiau such as but not limited to star gazing, navigation, lauhala weaving, upena (net making).

As a permittee through the City and County of Honolulu, the Department of Parks and Recreations Adopt-a-Park Program Kingdom Pathways will continue to restore and beautify Mākaha Beach Park. Regarding working on the Mākaha Beach Park Realignment and reopening the Mākaha Beach Fishpond, currently under the jurisdiction of the City and County of Honolulu. This fishpond is carbon-dated back to prehistoric times and through Kingdom history. Kingdom Pathways has opened the conversation with DLNR, specifically the Division of Aquatic Resources, for removing invasive plants/species and intend to reintroduce native plants/species with hopes of giving the scarcely numbered and federally protected species a place to thrive. The overall goal is to have a culturally accurate and fully restored fishpond that will help further our public and private school's education, cultural practices, and community awareness while providing self-sustainability in an uncertain future.

Kingdom Pathways will continue to volunteer our services to address community issues such as litter, illegal dumping, identification of safety hazards leading up to work orders, and area beautification through monthly cleanups and education throughout the leeward coast. Kingdom Pathways will continue to work out of a job while providing safe places for the community and visitors to enjoy.



3. The public purpose and need to be served;

The public purpose of the continued work is to provide the community with a safe and clean coastline for their Ohana to thrive. The leeward coast, its mountains, streams, and the ocean are vital to community health, gathering rights, and self-sustainability. Unfortunately, the lands have been abused due to pollution, litter, and illegal dumping on both land and sea. It has also created a sense of helplessness in the community.

The people of Wai'anae are intelligent, territorial, and deeply connected to their roots. Still, due to the high cost of living and unaffordable homes, the people of Wai'anae sometimes must work more than one job to make ends meet, which often disconnects parents from Keiki. Kingdom Pathways continues to promote family-oriented cleanups and invites families to help be a part of the solution, whether through educational means, sharing mana'o, or hands-on work. We firmly believe that Ohana is the very fabric that will change how the leeward coast is heading. We are creating a Youth Ambassador Program to bring together students to be mentored by adults to promote mutual understanding, increase leadership skills, and prepare youth to make a difference in their communities.

4. Describe the target population to be served; and

The target population to be served is 49,694 Leeward Coast communities which is the 23<sup>rd</sup> most populated city in the state out of 163 within this demographic area is 48.40% of Native Hawaiians. In 2021, the median households were \$71,681 however, 27.40% of these families live below the poverty level in comparison to Honolulu County where the household median income is \$92,600 and only 10% in poverty. There is a clear need to invest in the people that call Wai'anae home, from parents to Keiki, public and private schools, and colleges including the visitors who frequent the leeward coast.

Throughout the pandemic our coast had experienced a rise in visitor's. We noticed as a community the shift in our environment, resources, and the detrimental affects since the reopening of covid. Our state has been unable to keep up with the over tourism, the rise in crime, the illegal dumping. To include, the over use of our public beaches and parks and the destruction done to these public areas. In addition, the damage done in our mountains and streams due to illegal hunters, hikers, thrill seekers and houseless individual's.



5. Describe the geographic coverage.

The subsidy will cover the Wai'anae area a city located in Honolulu County of Hawai'i. Leeward Coast of O'ahu, State District 44 and 43, to include Senate District 21.

### **III. Service Summary and Outcomes**

The Service Summary shall include a detailed discussion of the applicant's approach to the request. The applicant shall clearly and concisely specify the results, outcomes, and measures of effectiveness from this request. The applicant shall:

1. Describe the scope of work, tasks and responsibilities;

The support from this grant will help us continue fostering our initiatives on the following:

Perpetuation of our Culture through education and outreach, Protection and Preservation of native species and natural resources, Sustainability along our Leeward Coast.

Presently, Kingdom Pathways educates and empowers the Wai'anae community, schools, and visitors on the sensitivity of culturally significant areas through our social media platforms and our website's monthly newsletters. Our social issues have been reported on multiple news outlets. We have been guest speakers on various platforms, including Harvard University's (Hawai'i Club), about environmental impacts, climate resiliency, global health, indigenous science, and policies we've championed. Hearing other panelists speak of issues they face in their communities gives us a heartwarming experience to know the little kuleana we've been called to help invoke change in Hawai'i and globally.

Kingdom Pathways will also accomplish education opportunities that'll be performed at Kū'īlioloa Heiau by conducting cleanups which we require everyone to register and sign waivers. Also, hosting workshops that perpetuate our culture and rich history, and at the end of each workshop, a survey will be required to make improvements.

In addition, we will continue maintaining the partnership with DLNR and DOFAW. To collect data on the Federally Protected species and work on removing invasive plants and invasive feral cats that pose a threat to the Ua'u. The collaborative efforts also comprise the seasonal installation of awareness signage from June through November. As well as assisting

DOFAW through breeding, migratory, and fall-out season where birds become destabilized and injured.

Kingdom Pathways will continue to expand on our Mākaha Beach Parks Adopt-A-Park agreement, including maintenance and restoration. Grant funding will help directly support these activities as outlined by the formal volunteer agreement: removing litter, graffiti, leaves, and pods from park grounds and parking lot, cutting grass, trimming hedges, and painting picnic tables and benches. We also create cleanups encouraging the public to help sustain beaches by participating in creating their own sand sifter and educating them that micro-plastics threaten marine, terrestrial, and aquatic ecosystems.

Kingdom Pathways will continue its mission of Aloha 'Āina on the leeward coast, picking up the social issues and injustices in areas where it is often neglected and monitoring illegal activities that continue to take place and further destroy our coastline and ocean. When outreach is warranted, we host zoom meetings to consult with multiple community members, organizations, schools, colleges, and groups to weigh in on the matter. We plan to run our Youth Ambassador Program to support future innovators and change-makers to create and build upon social impacts by creating opportunities for mentorship, workshops, and discussions. In addition, we take on the kuleana by suggestive corrective measures, provide solutions to our representatives, and help with community-driven remedial action such as resolutions, policies, measures, and petitions.

Information passed through genealogy for the betterment of the community Kingdom Pathways as a cultural practitioner, Kumu, and lineal descendants, especially to the Wai'anae Coast, we will continue to champion on behalf of the community. Work to correct and collect data on pertinent social and cultural issues, which in turn is conveyed to Departments of the State of Hawai'i and the City and County of Honolulu for their awareness and implementation of a work order.

2. Provide a projected annual timeline for accomplishing the results or outcomes of the service;

July 2023 - June 30, 2024

- Conduct tri-monthly alternating cleanups of State and City owned beachfront, shoreline beaches, and parks to prevent ocean pollution.
- Continue with the water quality testing, collect data, and work alongside the Wai'anae High School Students in the Marine Science Program and the Surfrider Foundation.
- Initiate Youth Ambassador Program

- Continue to collect data on cultural and social issues and implement solutions at the lowest level possible.
- Maintain, clean, educate and monitor the Federally Protected Ua'u birds at Kū'iilioloa Heiau
- Remove invasive plants/species to make room for native plants/species in areas of proposed tri-monthly clean ups

July 2023 - September 2023

- Make necessary movement to obtain a permit from the City and County of Honolulu as the landowner of Mākaha Beach Park and the Makaha fishpond.

September 2023

- Purchase needed equipment to conduct the removal of invasive plants at the Mākaha fishpond

October 2023

- Initiate a conversation with DAR to rehabilitate the Mākaha fishpond and agree on a start date

November 2023 - February 2024

- Document the process of Mākaha fishpond restoration, share data with Agencies, invite schools to partake, collect data and share their findings with the community through various platforms.

March 2024

- Populate the Mākaha Fishpond with native fish, collect data and monitor with DAR and schools

April 2024 - June 30, 2024

- Monitor progress and reassess the need for future grants to progress the Mākaha fishpond further.

3. Describe its quality assurance and evaluation plans for the request. Specify how the applicant plans to monitor, evaluate, and improve their results; and

The Chief Executive Officer of Kingdom Pathways and the working board will oversee all activities concerning this grant, and progress will be reported and documented for transparency. In addition, the Chief Executive Officer will monitor the progress and potential of each project weekly and, if necessary, make any adjustments to meet its timely completion.

Kingdom Pathways CEO has the military experience to meet timelines and conduct operations with meticulous precision if needed. In addition,

Kingdom Pathways has been organizing, educating, and mobilizing our all-volunteer grassroots effort since 2011 with noticeable outcomes and solutions.

4. List the measure(s) of effectiveness that will be reported to the State agency through which grant funds are appropriated (the expending agency). The measure(s) will provide a standard and objective way for the State to assess the program's achievement or accomplishment. Please note that if the level of appropriation differs from the amount included in this application that the measure(s) of effectiveness will need to be updated and transmitted to the expending agency.

The continued work through Kingdom Pathways will meet future generation's sustainable needs. In addition, the Aloha 'Āina Program, its workshops, and hands-on work will continue to develop our future leaders from Kindergarten to College students by instilling in them a sense of pride and the hope needed to see the potential in every project we touch. Ultimately, Kingdom Pathways will continue to clean out coastlines, beaches, and parks. Protecting cultural sites and endangered species will help ensure their future, not something we can only read about in a book. The need to cater to the Wai'anae Coast supersedes the need to sit back and allow nothing to happen. As Wai'anae residents, Kingdom Pathways have an in-depth relationship with the land and sea.

Kingdom Pathways will provide City and State agencies or departments with "boots on the ground" reports and data collecting monthly from our scheduled events. Kingdom Pathways will also determine what illegal activities are trending and what are not so we can effectively deploy ourselves and volunteers in areas along the Wai'anae Coast to take appropriate action. As with anything we do, we identify an issue, gather community input, and make necessary movements with Departments such as DLNR or the City and County of Honolulu and then conduct our projects accordingly.

By conducting the proposed grant activities, it is the objective of Kingdom Pathways to meet the following measurable outcomes:

The Aloha 'Āina Program will aim to build ambassadors to sign up members and develop our future leaders.

Youth Ambassador Program will introduce sustainable solutions for ohana's and provide families with Mala'ai-kits, a variation of vegetables, kalo, 'uala (sweet potatoes).

In obtaining these goals, the following measures will be reported to the State agency:

- Number of members joined programs
- Pounds of rubbish removed at tri-monthly cleanups
- Number of mala-ai kits that have been distributed to each ohana
- Number of witnessed or evidence based environmental infractions reported to authorities
- Report any measures, policies, petitions and or resolutions conducted
- Before and After progress pictures of all activities
- Report the number of reintroduction and reforestation of native plants and species
- Report the number of Ua'u survival rate
- Report on water quality progress

#### **IV. Financial**

##### **Budget**

1. The applicant shall submit a budget utilizing the enclosed budget forms as applicable, to detail the cost of the request.
  - a. Budget request by source of funds (Link)
  - b. Personnel salaries and wages (Link)
  - c. Equipment and motor vehicles (Link)
  - d. Capital project details (Link)
  - e. Government contracts, grants, and grants in aid (Link)
  
2. The applicant shall provide its anticipated quarterly funding requests for the fiscal year 2024.

Quarter 1	Quarter 2	Quarter 3	Quarter 4	Total Grant
169,917.25	25,917.00	25,917.00	25,917 00	238,669.00

3. The applicant shall provide a listing of all other sources of funding that they are seeking for fiscal year 2024.
  
4. The applicant shall provide a listing of all state and federal tax credits it has been granted within the prior three years. Additionally, the applicant shall provide a listing of all state and federal tax credits they have applied for or anticipate applying for pertaining to any capital project, if applicable.

5. The applicant shall provide a listing of all federal, state, and county government contracts, grants, and grants in aid it has been granted within the prior three years and will be receiving for fiscal year 2024 for program funding.
6. The applicant shall provide the balance of its unrestricted current assets as of December 31, 2022.

## **V. Experience and Capability**

### **1. Necessary Skills and Experience**

The applicant shall demonstrate that it has the necessary skills, abilities, knowledge of, and experience relating to the request. State your experience and appropriateness for providing the service proposed in this application. The applicant shall also provide a listing of verifiable experience of related projects or contracts for the most recent three years that are pertinent to the request.

Since 2011, the Executive Director and founder of Kingdom Pathways, Joseph K. Simpliciano, has been an active and exceedingly vocal community member. He has been seen numerous times on tv, in newspapers, and zoom meetings. In addition, he has been a very proactive member of the Wai'anae Neighborhood Board and successfully implemented resolutions and recommendations that benefitted the community. Joseph is also the Wai'anae Harbormaster, a State employee of the Division of Land and Natural Resources, DOBOR. Similarly, he has an excellent relationship with other State agencies such as DOCARE, DOFAW, DAR, and the Department of Health. Joseph is also a Native Hawaiian and Disabled Veteran who retired from the U.S. Army and received the General Omar Bradley Award for leadership, Bronze Star recipient amongst many other military leadership schools and training.

Carmen Guzman-Simpliciano, the Assistant Director of Kingdom Pathways, was appointed in 2021 so that Wai'anae Community members and visitors would have a "Canoe" to navigate the many issues facing the Wai'anae coast. It also gave them a chance to be a part of the solution. This solution would carry out into the future as our educational outreaches have groomed keiki to kupuna because it is never too late to learn something new. Being a Native Hawaiian and a lifelong resident of Wai'anae, Kingdom Pathways has been aware of the need to conserve and protect our land and sea (from Mauka to Makai). Kingdom Pathways has also been instrumental in implementing various community projects along the coastline; unlike others, we do not focus on one area or State Park. Instead, we can physically work and improve areas in districts 43 and 44.

## **2. Facilities**

The applicant shall provide a description of its facilities and demonstrate its adequacy in relation to the request. If facilities are not presently available, describe plans to secure facilities.

Kingdom Pathways intends to acquire a self-storage unit to secure equipment and supplies.

## **VI. Personnel: Project Organization and Staffing**

### **1. Proposed Staffing, Staff Qualifications, Supervision and Training**

The applicant shall describe the proposed staffing pattern and proposed service capacity appropriate for the viability of the request. The applicant shall provide the qualifications and experience of personnel for the request and shall describe its ability to supervise, train and provide administrative direction relative to the request.

The Chief Executive Officer will ensure that all grant activity progresses promptly, within allocation, and fulfills all milestones and objectives. Thus, include records, documentation, and reports for appropriated grant funds. The founder of Kingdom Pathways will meet monthly with the Board of Directors to coordinate cleanups and provide oversight to the program coordinator. In addition, review grant activity progress and make any modifications necessary.

The Assistant Director and Program Coordinator will work to ensure all volunteers and students are engaged and safe during grant activities and assist in promoting grant activities to our communities. In addition, the Program Coordinator will oversee the Youth Ambassador program to provide opportunities for training and fostering youths to have a strong sense of civic engagement, commitment to community development, and an awareness of current and global issues. Finally, the Assistant Director will proactively look for opportunities to be engaged, particularly by paying attention to Facebook, Instagram, News posts, and emails.

The Youth Ambassador program leader will work together to tackle bi-monthly projects to look into issues that affect youth come up with ideas and solutions and empower and inspire others to become young professionals. In addition, the Youth Ambassador Leader will take the initiative to represent us at events, speaking from their own experiences.



Finally, the youth ambassador leader will write a summary when attending events or meetings.

The Executive Officer - Joseph K. Simpliciano Jr, is a lineal descendant of Keku'iapoiwa II, mother of King Kamehameha the great. Joseph is also a descendant of Henry Kanihonui, a subject of the Kingdom of Hawai'i who has lived in Wai'anae and signed the Ku'e Petition. Joseph is a disabled combat veteran who served in the U.S. Army. One of the many recognitions received was a Bronze Star and the General Omar Bradley award for leadership. Joseph is a natural leader at heart and has successfully led over 2000 Soldiers in Garrison and conducted multiple Combat missions in foreign countries. Joseph held many other positions in the Army, such as a procurement officer and master instructor, and often held positions meant for senior non-commissioned officers, which was well above Joseph's pay grade and rank.

Joseph is a graduate of Wai'anae High School and wears many hats in the Wai'anae Community, such as a previous Neighborhood Board Member, proactive community member, parent, and most importantly, the Wai'anae Small Boat Harbormaster under the Department of Land and Natural Resources, DOBOR.

Joseph had years of mentorship from the Konohiki of Wai'anae until his passing. Joseph then received the Konohiki instruments and has been carrying on the Kuleana and leadership role of the community. The Wai'anae community often seeks out Joseph to raise issues, a person who can mobilize a community and implement solutions.

The Assistant Director - Carmen Guzman-Simpliciano is a Lineal Descendant of Līloa. Carmen has spent summers and a portion of her life on a Molokai homestead living sustainably and learning various cultural arts and practices. Carmen is no stranger to the cultural arts. Most recently, Carmen became a Kapa Kumu under Dalani Tanahy. Besides her other duties, Carmen is essential in Kingdom Pathways as an event planner and organizer, website designer, and social media manager. Carmen has been tasked with carrying on the kuleana from the late Konohiki of Wai'anae's Hanale Kila Hopfe Aha Moku Council, a state advisory committee. To carry on multi-projects, for example, the aforementioned "Na Ho'okele" project. The Konohiki also entrusted the water quality and health of our Wai'anae community, specifically in Pōka'i Bay, to include the issues the mooring buoy's pose, and the dilapidated jetty wall that contribute to the poor water quality directly affected our community. Carmen has built numerous bridges and partnerships with our state and city entities, private and public schools, and other non-profits and organizations.

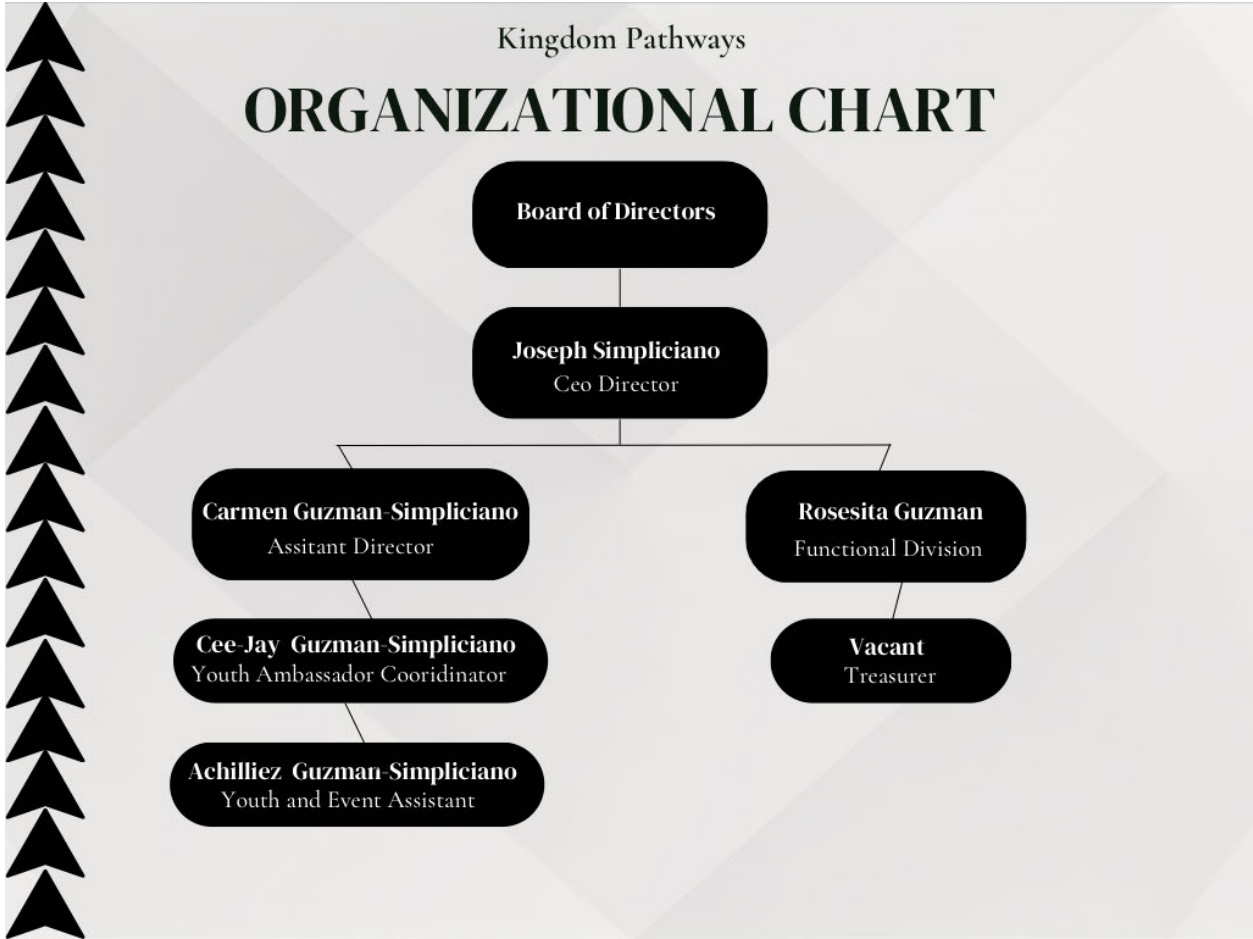
The Functional Division – Rosesita Guzman is an assistant director in the film industry. She's worked on multiple episodic features, Chief of War, Doogie Kamealoha, NCIS, Magnum PI, and Hawaii Five-O, to name a few. Her daily task includes tracking progress against the filming production schedule, preparing call sheets, checking cast and crews, and maintaining order on set. In addition, she has helped Kingdom Pathways by donating funds and goods, assisting with human resource needs, and special event assistance, including serving on our working board of directors.

The Youth Director- Cee-Jay Guzman-Simpliciano, is the Aloha Aina Youth coordinator and ambassador. Cee-jay is a Wai'anae High School Honor Role Student and junior that has played a vital role over the years with Kingdom Pathways. Cee-jay is often seen organizing and planning our beach and park cleanups and participates in reforestation projects that reintroduce native plant species along the Wai'anae Coast. Cee-jay is a proactive Wai'anae High School student that looks out for others; she recently petitioned Wai'anae High School and its principal, advocating the request of conducting a test of the drinking fountains after a recent article about lead contamination. She has been the current volunteer coordinator. While cleanups are being conducted, she tracks on-site registration and manages the volunteer's food and drinks services. Cee-Jay is a well mature and in tune with her culture and history and is well-prepared to carry us into the future.

The Youth Assistant - Achilliez Guzman- Simpliciano, Aloha Aina youth volunteer organizer. Achilliez is a Wai'anae Intermediate School student who has experience in team building and excels at leadership he's been awarded most helpful award by all his teachers. Achilliez has been integral to Kingdom Pathways, always leading Keiki volunteers during projects. He is often spotted checking on their safety, welfare, and progress. Achilliez's responsibility is to identify what can be done and track the cleanups, trash pilings, and weighing. In addition, he will manage the mala'ai seedling kit's growth daily. Finally, Achilliez fundraised for multi-events seeking in-person donations at multiple outlet stores.

**2. Organization Chart**

The applicant shall illustrate the position of each staff and line of responsibility/supervision. If the request is part of a large, multi-purpose organization, include an organization chart that illustrates the placement of this request.



**3. Compensation**

The applicant shall provide an annual salary range paid by the applicant to the three highest paid officers, directors, or employees of the organization by position title, not employee name.

To date, Kingdom Pathways does not have paid employees. All are on volunteer bases, and all expenses are out of pocket.

## **VII. Other**

### **1. Litigation**

The applicant shall disclose any pending litigation to which they are a party, including the disclosure of any outstanding judgement. If applicable, please explain.

There are no pending litigation or outstanding judgements against any and all parties.

### **2. Licensure or Accreditation**

The applicant shall specify any special qualifications, including but not limited to licensure or accreditation that the applicant possesses relevant to this request.

NOT APPLICABLE

### **3. Private Educational Institutions**

The applicant shall specify whether the grant will be used to support or benefit a sectarian or non-sectarian private educational institution. Please see [Article X, Section 1, of the State Constitution](#) for the relevance of this question.

The grant will not be used to support or benefit a sectarian or non-sectarian private educational institution.

### **4. Future Sustainability Plan**

The applicant shall provide a plan for sustaining after fiscal year 2023-24 the activity funded by the grant if the grant of this application is:

- (a) Received by the applicant for fiscal year 2023-24, but
- (b) Not received by the applicant thereafter.

Kingdom Pathways has always been a grassroots effort and realizes the amount of work and equipment needed to set up the Wai'anae community and visitors for success and future sustainability. Therefore, if there are no funding afterwords, Kingdom Pathways will continue to operate normally. Kingdom Pathways genuinely appreciate the opportunity and consideration given to us, as do the many lives we touch, from Keiki to Kupuna.

Kingdom Pathways has a robust group of volunteers from all over the island, and we continue to attract more due to the issues and solutions we tackle as a collective unit. The educational workshops that helped to build our future Aloha

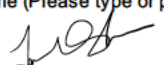
'Āina Stewards will pay off, and this will help Kingdom Pathways continue its mission and move on to other projects along the Wai'anae Coast.

# BUDGET REQUEST BY SOURCE OF FUNDS

Period: July 1, 2023 to June 30, 2024

App

Kingdom Pathways

BUDGET CATEGORIES	Total State Funds Requested (a)	Total Federal Funds Requested (b)	Total County Funds Requested (c)	Total Private/Other Funds Requested (d)
<b>A. PERSONNEL COST</b>				
1. Salaries	82,368			
2. Payroll Taxes & Assessments	6,301			
3. Fringe Benefits	0			
<b>TOTAL PERSONNEL COST</b>	<b>88,669</b>			
<b>B. OTHER CURRENT EXPENSES</b>				
1. Airfare, Inter Is and	0			
2. Insurance (gen ab ty, TDI, workcomp)	8,000			
3. Lease/Renta of Equ pment	0			
4. Lease/Renta of Space	1,500			
5. Staff Tra n ng	0			
6. Supp es	2,000			
7. Te ecommun cat on	0			
8. Ut t es	0			
9. Cr cket mach ne bu k package	700			
10. Heat Press	300			
11. B ank T sh rts n bu k	1,000			
12 Trave /gas	1,500			
13				
14				
15				
16				
17				
18				
19				
20				
<b>TOTAL OTHER CURRENT EXPENSES</b>	<b>15,000</b>			
<b>C. EQUIPMENT PURCHASES</b>	<b>78,000</b>			
<b>D. MOTOR VEHICLE PURCHASES</b>	<b>57,000</b>			
<b>E. CAPITAL</b>				
<b>TOTAL (A+B+C+D+E)</b>	<b>238,669</b>			
<b>SOURCES OF FUNDING</b>		Budget Prepared By:		
(a) Total State Funds Requested	237,169	Joseph K. Simpliciano Jr	808-291-5527	
(b) Total Federal Funds Requested		Name (Please type or print) Phone		
(c) Total County Funds Requested				
(d) Total Private/Other Funds Requested		Signature of Authorized Official Date		
<b>TOTAL BUDGET</b>	<b>237,169</b>	Executive Director Name and Title (Please type or print)		

## BUDGET JUSTIFICATION - PERSONNEL SALARIES AND WAGES

Period: July 1, 2022 to June 30, 2023

Kingdom Pathways

POSITION TITLE	FULL TIME EQUIVALENT	ANNUAL SALARY A	% OF TIME ALLOCATED TO GRANT REQUEST	TOTAL STATE FUNDS REQUESTED
Assistant Director	1	\$60,000.00	100.00%	\$ 60,000.00
Aloha Aina youth organizer and ambassador	0.5	\$12,000.00	100.00%	\$ 12,000.00
Aloha Aina youth volunteer organizer	0.45	\$10,368.00	100.00%	\$ 10,368.00
				\$ -
				\$ -
				\$ -
				\$ -
				\$ -
				\$ -
				\$ -
				\$ -
				\$ -
<b>TOTAL:</b>				<b>82,368.00</b>
<b>JUSTIFICATION/COMMENTS: Funding requested to compensate one full time position and two part time or less than youth organizers</b>				



## BUDGET JUSTIFICATION - EQUIPMENT AND MOTOR VEHICLES

Period: July 1, 2023 to June 30, 2024

Kingdom Pathways

DESCRIPTION EQUIPMENT	NO. OF ITEMS	COST PER ITEM	TOTAL COST	TOTAL BUDGETED
12 inch wood chipper	1.00	\$70,000.00	\$ 70,000.00	
Shindaiwa T302 Weed Eater	2.00	\$500.00	\$ 1,000.00	
Brush Mower	1.00	\$6,000.00	\$ 6,000.00	
chainsaw	2.00	\$500.00	\$ 1,000.00	
			\$ -	
<b>TOTAL:</b>	<b>6</b>		<b>\$ 78,000.00</b>	

**JUSTIFICATION/COMMENTS:**

Equipment will be used to remove and clear out areas with invasive plant species and overgrowth

DESCRIPTION OF MOTOR VEHICLE	NO. OF VEHICLES	COST PER VEHICLE	TOTAL COST	TOTAL BUDGETED
Flatbed Truck	1.00	\$55,000.00	\$ 55,000.00	
Trailer	1.00	\$2,000.00	\$ 2,000.00	
			\$ -	
			\$ -	
			\$ -	
<b>TOTAL:</b>	<b>2</b>		<b>\$ 57,000.00</b>	

**JUSTIFICATION/COMMENTS:**

flatbed truck will be used to haul trash and to transport equipment and personnel

## BUDGET JUSTIFICATION - CAPITAL PROJECT DETAILS

Period: July 1, 2023 to June 30, 2024

Kingdom Pathways

<b>FUNDING AMOUNT REQUESTED</b>						
TOTAL PROJECT COST	ALL SOURCES OF FUNDS RECEIVED IN PRIOR YEARS		STATE FUNDS REQUESTED	OTHER SOURCES OF FUNDS REQUESTED	FUNDING REQUIRED IN SUCCEEDING YEARS	
	FY: 2021-2022	FY: 2022-2023	FY:2023-2024	FY:2023-2024	FY:2024-2025	FY:2025-2026
PLANS						
LAND ACQUISITION						
DESIGN						
CONSTRUCTION						
EQUIPMENT						
<b>TOTAL:</b>						
<b>JUSTIFICATION/COMMENTS:</b>						
Not Applicable						

**GOVERNMENT CONTRACTS, GRANTS, AND / OR GRANTS IN AID**

Appr

Kingdom Pathways

Contracts Total:

-

	<b>CONTRACT DESCRIPTION</b>	<b>EFFECTIVE DATES</b>	<b>AGENCY</b>	<b>GOVERNMENT ENTITY (U.S./State/Hawaii/ Honolulu/ Kauai/ Maui County)</b>	<b>CONTRACT VALUE</b>
1	Not Applicable				
2					
3					
4					
5					
6					
7					
8					
9					
10					
11					
12					
13					
14					
15					
16					
17					
18					
19					
20					
21					
28					
29					
30					