

DAVID Y. IGE
GOVERNOR



CRAIG K. HIRAI
DIRECTOR

GLORIA CHANG
DEPUTY DIRECTOR

STATE OF HAWAII
DEPARTMENT OF BUDGET AND FINANCE
P.O. BOX 150
HONOLULU, HAWAII 96810-0150

EMPLOYEES' RETIREMENT SYSTEM
HAWAII EMPLOYER-UNION HEALTH BENEFITS TRUST FUND
OFFICE OF THE PUBLIC DEFENDER

ADMINISTRATIVE AND RESEARCH OFFICE
BUDGET, PROGRAM PLANNING AND
MANAGEMENT DIVISION
FINANCIAL ADMINISTRATION DIVISION
OFFICE OF FEDERAL AWARDS MANAGEMENT (OFAM)

WRITTEN ONLY
TESTIMONY BY CRAIG K. HIRAI
DIRECTOR, DEPARTMENT OF BUDGET AND FINANCE
TO THE SENATE COMMITTEE ON WATER AND LAND
ON
SENATE BILL NO. 3330

January 31, 2022
1:00 p.m.
Room 229 & Videoconference

RELATING TO THE PUPUKEA MARINE LIFE CONSERVATION DISTRICT

The Department of Budget and Finance (B&F) offers comments on this bill.

Senate Bill No. 3330 establishes the Pupukeya Marine Life Conservation District Carrying Capacity pilot program and appropriates an unspecified sum of general funds for FY 23 to the Department of Land and Natural Resources for the pilot program.

B&F notes that the federal Coronavirus Response and Relief Supplemental Appropriations Act requires that states receiving Elementary and Secondary School Emergency Relief (ESSER) II funds and Governor's Emergency Education Relief II funds must maintain state support for:

- Elementary and secondary education in FY 22 at least at the proportional level of the state's support for elementary and secondary education relative to the state's overall spending, averaged over FYs 17, 18 and 19; and
- Higher education in FY 22 at least at the proportional level of the state's support for higher education relative to the state's overall spending, averaged over FYs 17, 18 and 19.

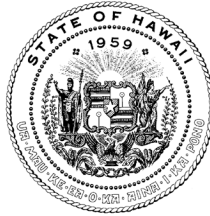
Further, the federal American Rescue Plan (ARP) Act requires that states receiving ARP ESSER funds must maintain state support for:

- Elementary and secondary education in FY 22 and FY 23 at least at the proportional level of the state's support for elementary and secondary education relative to the state's overall spending, averaged over FYs 17, 18 and 19; and
- Higher education in FY 22 and FY 23 at least at the proportional level of the state's support for higher education relative to the state's overall spending, averaged over FYs 17, 18 and 19.

The U.S. Department of Education has issued rules governing how these maintenance of effort (MOE) requirements are to be administered. B&F will be working with the money committees of the Legislature to ensure that the State of Hawai'i complies with these ESSER MOE requirements.

Thank you for your consideration of our comments.

DAVID Y. IGE
GOVERNOR OF HAWAII



STATE OF HAWAII
DEPARTMENT OF LAND AND NATURAL RESOURCES

POST OFFICE BOX 621
HONOLULU, HAWAII 96809

**Testimony of
SUZANNE D. CASE
Chairperson**

**Before the Senate Committee on
WATER AND LAND**

**Monday, January 31, 2022
1:00 PM**

State Capitol, Conference Room 229 & Videoconference

**In consideration of
SENATE BILL 3330
RELATING TO THE PUPUKEA MARINE LIFE CONSERVATION DISTRICT**

Senate Bill 3330 proposes to require the Department of Land and Natural Resources (Department) to establish and conduct the Pupukea Marine Life Conservation District (MLCD) carrying capacity pilot program; and appropriates moneys. **The Department supports this measure provided that its passage does not replace or adversely impact priorities indicated in the Executive Budget request.**

The Department's Division of Aquatic Resources (DAR) is leading the "Holomua: Marine 30x30" initiative to improve marine management practices across the state to ensure healthy ecosystems and abundant resources that allow the people of Hawai'i to enjoy coastal waters, support local livelihoods, and feed our families. One of the four pillars of Holomua: Marine 30x30 is monitoring to measure current conditions and track progress following implementation of new management approaches and to use data to identify areas where management actions need to be further adapted.

Recent events such as the extreme flooding in Hā'ena, Kaua'i and the COVID-19 pandemic have provided unique glimpses into how nearshore marine resources respond to reduced human use. It is becoming increasingly evident that activities long considered "non-extractive" can have significant impacts on nearshore ecosystems. It is critical that we better understand these impacts and use thresholds so we can prevent precious and unique areas like Pūpūkea from being loved to death.

DAR estimates that a well-designed carrying capacity pilot program would cost around \$100,000 per year to conduct.

Thank you for the opportunity to comment on this measure.

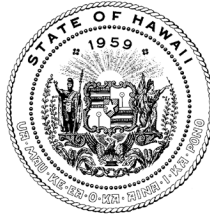
SUZANNE D. CASE
CHAIRPERSON
BOARD OF LAND AND NATURAL RESOURCES
COMMISSION ON WATER RESOURCE MANAGEMENT

ROBERT K. MASUDA
FIRST DEPUTY

M. KALEO MANUEL
DEPUTY DIRECTOR - WATER

AQUATIC RESOURCES
BOATING AND OCEAN RECREATION
BUREAU OF CONVEYANCES
COMMISSION ON WATER RESOURCE MANAGEMENT
CONSERVATION AND COASTAL LANDS
CONSERVATION AND RESOURCES ENFORCEMENT
ENGINEERING
FORESTRY AND WILDLIFE
HISTORIC PRESERVATION
KAHOOLAWE ISLAND RESERVE COMMISSION
LAND
STATE PARKS

DAVID Y. IGE
GOVERNOR OF HAWAII



STATE OF HAWAII
DEPARTMENT OF LAND AND NATURAL RESOURCES

POST OFFICE BOX 621
HONOLULU, HAWAII 96809

**Testimony of
SUZANNE D. CASE
Chairperson**

**Before the Senate Committee on
WATER AND LAND**

**Monday, January 31, 2022
1:00 PM**

State Capitol, Conference Room 229 & Videoconference

**In consideration of
SENATE BILL 3330
RELATING TO THE PUPUKEA MARINE LIFE CONSERVATION DISTRICT**

Senate Bill 3330 proposes to require the Department of Land and Natural Resources (Department) to establish and conduct the Pupukea Marine Life Conservation District (MLCD) carrying capacity pilot program; and appropriates moneys. **The Department supports this measure provided that its passage does not replace or adversely impact priorities indicated in the Executive Budget request.**

The Department's Division of Aquatic Resources (DAR) is leading the "Holomua: Marine 30x30" initiative to improve marine management practices across the state to ensure healthy ecosystems and abundant resources that allow the people of Hawai'i to enjoy coastal waters, support local livelihoods, and feed our families. One of the four pillars of Holomua: Marine 30x30 is monitoring to measure current conditions and track progress following implementation of new management approaches and to use data to identify areas where management actions need to be further adapted.

Recent events such as the extreme flooding in Hā'ena, Kaua'i and the COVID-19 pandemic have provided unique glimpses into how nearshore marine resources respond to reduced human use. It is becoming increasingly evident that activities long considered "non-extractive" can have significant impacts on nearshore ecosystems. It is critical that we better understand these impacts and use thresholds so we can prevent precious and unique areas like Pūpūkea from being loved to death.

DAR estimates that a well-designed carrying capacity pilot program would cost around \$100,000 per year to conduct.

Thank you for the opportunity to comment on this measure.

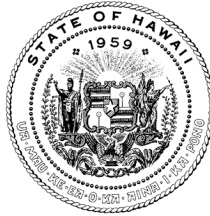
SUZANNE D. CASE
CHAIRPERSON
BOARD OF LAND AND NATURAL RESOURCES
COMMISSION ON WATER RESOURCE MANAGEMENT

ROBERT K. MASUDA
FIRST DEPUTY

M. KALEO MANUEL
DEPUTY DIRECTOR - WATER

AQUATIC RESOURCES
BOATING AND OCEAN RECREATION
BUREAU OF CONVEYANCES
COMMISSION ON WATER RESOURCE MANAGEMENT
CONSERVATION AND COASTAL LANDS
CONSERVATION AND RESOURCES ENFORCEMENT
ENGINEERING
FORESTRY AND WILDLIFE
HISTORIC PRESERVATION
KAHOOLAWE ISLAND RESERVE COMMISSION
LAND
STATE PARKS

DAVID Y. IGE
GOVERNOR OF HAWAII



STATE OF HAWAII
DEPARTMENT OF LAND AND NATURAL RESOURCES

POST OFFICE BOX 621
HONOLULU, HAWAII 96809

**Testimony of
SUZANNE D. CASE
Chairperson**

**Before the Senate Committee on
WATER AND LAND**

**Monday, January 31, 2022
1:00 PM**

State Capitol, Conference Room 229 & Videoconference

**In consideration of
SENATE BILL 3330
RELATING TO THE PUPUKEA MARINE LIFE CONSERVATION DISTRICT**

Senate Bill 3330 proposes to require the Department of Land and Natural Resources (Department) to establish and conduct the Pupukea Marine Life Conservation District (MLCD) carrying capacity pilot program; and appropriates moneys. **The Department supports this measure provided that its passage does not replace or adversely impact priorities indicated in the Executive Budget request.**

The Department's Division of Aquatic Resources (DAR) is leading the "Holomua: Marine 30x30" initiative to improve marine management practices across the state to ensure healthy ecosystems and abundant resources that allow the people of Hawai'i to enjoy coastal waters, support local livelihoods, and feed our families. One of the four pillars of Holomua: Marine 30x30 is monitoring to measure current conditions and track progress following implementation of new management approaches and to use data to identify areas where management actions need to be further adapted.

Recent events such as the extreme flooding in Hā'ena, Kaua'i and the COVID-19 pandemic have provided unique glimpses into how nearshore marine resources respond to reduced human use. It is becoming increasingly evident that activities long considered "non-extractive" can have significant impacts on nearshore ecosystems. It is critical that we better understand these impacts and use thresholds so we can prevent precious and unique areas like Pūpūkea from being loved to death.

DAR estimates that a well-designed carrying capacity pilot program would cost around \$100,000 per year to conduct.

Thank you for the opportunity to comment on this measure.

SUZANNE D. CASE
CHAIRPERSON
BOARD OF LAND AND NATURAL RESOURCES
COMMISSION ON WATER RESOURCE MANAGEMENT

ROBERT K. MASUDA
FIRST DEPUTY

M. KALEO MANUEL
DEPUTY DIRECTOR - WATER

AQUATIC RESOURCES
BOATING AND OCEAN RECREATION
BUREAU OF CONVEYANCES
COMMISSION ON WATER RESOURCE MANAGEMENT
CONSERVATION AND COASTAL LANDS
CONSERVATION AND RESOURCES ENFORCEMENT
ENGINEERING
FORESTRY AND WILDLIFE
HISTORIC PRESERVATION
KAHOOLAWE ISLAND RESERVE COMMISSION
LAND
STATE PARKS



Mālama Pūpūkea-Waimea
Post Office Box 188
Hale'iwa, HI 96712

Board of Directors

Denise Antolini
Anne Chung
Sydney Covell
Bob Leinau
Jacqueline Leinau

Advisory Council

Athline Clark
John Cutting
Dr. Alan Friedlander
Debbie Gowensmith
Maxx E. Phillips
Bill Quinlan
Palakiko Yagodich

Staff

Jenny Yagodich, Director of
Educational Programs &
Community Outreach

Federal Nonprofit Organization
501(c)(3) FEIN 27-0855937
www.pupukeawaimea.org
info@pupukeawaimea.org

January 29, 2022

Senator Lorraine R. Inouye, Chair
Senator Gilbert S.C. Keith-Agaran, Vice Chair
Hawai'i State Senate Committee on Water and Land
Hearing: Monday, January 31, 2022, 1:00 p.m.
Conference Room 229 & Videoconference

Re: SB3330 – Pūpūkea Marine Life Conservation District

Aloha Chair Inouye, Vice Chair Keith-Agaran, and Members of the Committee,

Mālama Pūpūkea-Waimea (MPW) is a Hawai'i non-profit organization founded on the North Shore of O'ahu in 2005. Our mission is "working to replenish and sustain the natural and cultural resources of the Pūpūkea and Waimea ahupua'a for present and future generations through active community stewardship, education, and partnerships." For eighteen years, we have focused our stewardship and education efforts on the Pūpūkea Marine Life Conservation District (MLCD), one of only three MLCDs on O'ahu and eleven statewide.

First, mahalo nui loa to Chair Inouye and WTL Committee Members Misalucha, Fevella, and Riviere (whose district includes the Pūpūkea MLCD) for co-sponsoring SB3330! We are grateful for your leadership and support for moving the bill forward.

Second, as the bill explains, sensitive areas of the Pūpūkea MLCD, particularly the Kapo'o Tidepools and Sharks Cove, have become overcrowded by visitors in recent years and this trend is predicted to increase. As the attached photos show, virtually every day of the week, 50-100 people may be walking, snorkeling, and swimming in the shallow tidepool and cove area, impacting this piko or nursery for marine life of the MLCD and nearby areas.

Detrimental levels of human use – or "anthropogenic impacts" -- are not currently mitigated, resulting in threats to marine life and limiting the use and enjoyment of this protected area by residents. Without a rest period, kapu, or other appropriate restrictions, the Kapo'o Tidepools and Sharks Cove in particular will continue to be degraded, contrary to the State's recognition, in 1983, that this spectacular area deserves the highest level of protection, not to be "loved to death."

Third, now is the ideal time to launch a three-year pilot program under the leadership of the Department of Land and Natural Resources, to: (1) assess the "carrying capacity" (i.e. the impacts to the marine life from anthropogenic uses) of sensitive areas in the MLCD, (2) monitor, document, and assess the effectiveness of mandatory and voluntary kapu or closures, and other potential restrictions, in high traffic areas; and (3) propose long-term natural resource management options to reduce

human use impacts, evaluate options for restrictions on access, and (at the same time) increase education of all users to avoid impacts. A report back to the Legislature in 2026 will help not only the Pūpūkea MLCD but, with appropriate funding and support, could set a statewide model for monitoring and managing similarly threatened nearshore protected areas, fully in line with the goals of the State's 30x30 Holomua Initiative.

In conclusion, MPW fully supports the bill and asks the Committee to move it forward with only these clarifying amendments, as suggested by Friends of Hanauma Bay, a sister organization that has direct experience with recent carrying capacity studies of the Hanauma MLCD:

1. Page 4, line 10: Unlike Hanauma Bay, there are no plans to restrict access to the Pupukea marine life conservation district and the associated Waimea and Pupukea beach parks or protect these areas from human access.

Recommend **bolded** change: Unlike Hanauma Bay, there are no plans to **mitigate ongoing and increasing anthropogenic impacts** to the Pūpūkea marine life conservation district and the associated Waimea and Pūpūkea beach parks.

2. Page 5, line 2: The results of unlimited human access to the sensitive areas of the Pupukea marine life conservation district appear to

Recommend change to: The results of unlimited human access to the sensitive areas of the Pupukea marine life conservation district (**delete "appear to"**)

3. Page 6, line 13: propose long—term management options to reduce the impact of

Recommend **bolded** change: propose long—term **natural resource** management options to reduce the impact of

4. Page 7, line 11: (3) Propose long—term management options to reduce the

Recommend **bolded** change: (3) Propose long—term **natural resource** management options to reduce the

5. Page 7, line 15: (b) In establishing and conducting the Pupukea marine life conservation district carrying capacity pilot program, the department of land and natural resources shall consult with the city and county of Honolulu; university of Hawaii, including the institute of marine biology; and nonprofit community organizations in the ahupuaa of Pupukea and Waimea.

Recommend **bolded** change: (b) In establishing and conducting the Pupukea marine life conservation district carrying capacity pilot program, the department of land and natural resources shall consult with the city and county of Honolulu; university of Hawaii, including the institute of marine biology; **other state and federal agencies and subject matter experts as appropriate**; and nonprofit community organizations in the ahupuaa of Pupukea and Waimea.

6. Page 8, line 13: The sum appropriated shall be expended by the department of land and natural resources for the purposes of this Act.

Recommend **bolded** change: The sum appropriated shall be expended by the department of land and natural resources **only** for the purposes of this Act.

For more information about the Kapo'o Tidepools, please see this story map and short video:

<https://storymaps.arcgis.com/stories/f0e9e87f4fc34e9ebe0600a01ebf995d>

https://www.youtube.com/watch?v=2mVHVLr1EUA&ab_channel=BenDuncan

Mahalo nui and best regards,



Denise Antolini
President, MPW

Kapoʻo Tidepools, Pūpūkea MLCD



Sharks Cove area of MLCD



Examples of Trampling and Harassment in Kapo'o and Sharks Cove



8 snorkelers pursuing a Honu in shallow waters of Sharks Cove





Testimony Before The
Senate Committee on Water and Land
IN SUPPORT OF SB 3330
Monday, January 31, 2022, 1:00PM, Room 229

My name is Kevin Chang and I am the Executive Director of Kua'āina Ulu 'Auamo (or KUA). KUA works to empower grassroots rural and Native Hawaiian mālama 'āina groups to celebrate their places and pass on their traditions to better Hawai'i and achieve 'āina momona— an abundant, productive ecological system that supports community well-being.

KUA supports SB 3330 as an incremental step towards 'āina momona.

KUA employs a community-driven approach that currently supports statewide networks of more than 36 mālama 'āina community groups collectively referred to as E Alu Pū (moving forward together), 40 fishpond projects and practitioners called the Hui Mālama Loko I'a, and a growing hui of over 60 Limu practitioners.

A cherished network member is Mālama Pūpūkea-Waimea (MPW), a Hawai'i non-profit organization founded on the North Shore of O'ahu in 2005 with a mission of "working to replenish and sustain the natural and cultural resources of the Pūpūkea and Waimea ahupua'a for present and future generations through active community stewardship, education, and partnerships." MPW has a record of exemplary community leadership in co-management and co-governance bringing awareness to their community and our state of the significance of the resources of the Pūpūkea Marine Life Conservation District (MLCD).

We support this bill which creates a three year pilot program to address natural resource impact issues currently being observed and experienced by MPW and the greater north shore region to: (1) assess the "carrying capacity" (i.e. the impacts to the marine life from anthropogenic uses) of sensitive areas in the MLCD, (2) monitor, document, and assess the effectiveness of mandatory and voluntary kapu or closures, and other potential restrictions, in high traffic areas; and (3) propose long-term natural resource management options to reduce human use impacts, evaluate options for restrictions on access, and (at the same time) increase education of all users to avoid impacts. If fully supported we believe lessons from this pilot could inform statewide approaches to monitor and manage similarly threatened nearshore protected areas, fully in line with the goals of the State's 30x30 Holomua Initiative.

The communities we work with are committed to ensuring the long-term health of our biocultural resources because they have depended on them for generations. We believe our environment is about long-term investing and vision. We believe the vision of 'āina momona our communities hold, includes collaborative innovative pilot projects like this which can serve as a model for improved environmental care.

Mahalo for this opportunity to testify in support.

Aloha 'Āina Momona.

SB-3330

Submitted on: 1/29/2022 6:25:04 PM

Testimony for WTL on 1/31/2022 1:00:00 PM

Submitted By	Organization	Testifier Position	Remote Testimony Requested
Ted Bohlen	Testifying for Hawaii Reef and Ocean Coalition	Support	No

Comments:

The Hawaii Reef and Ocean Coalition strongly supports this bill!

Please pass it! Mahalo!



Mālama Pūpūkea-Waimea
Post Office Box 188
Hale'iwa, HI 96712

Board of Directors

Denise Antolini
Anne Chung
Sydney Covell
Bob Leinau
Jacqueline Leinau

Advisory Council

Athline Clark
John Cutting
Dr. Alan Friedlander
Debbie Gowensmith
Maxx E. Phillips
Bill Quinlan
Palakiko Yagodich

Staff

Jenny Yagodich, Director of
Educational Programs &
Community Outreach

Federal Nonprofit Organization
501(c)(3) FEIN 27-0855937
www.pupukeawaimea.org
info@pupukeawaimea.org

January 29, 2022

Senator Lorraine R. Inouye, Chair
Senator Gilbert S.C. Keith-Agaran, Vice Chair
Hawai'i State Senate Committee on Water and Land
Hearing: Monday, January 31, 2022, 1:00 p.m.
Conference Room 229 & Videoconference

Re: SB3330 – Pūpūkea Marine Life Conservation District

Aloha Chair Inouye, Vice Chair Keith-Agaran, and Members of the Committee,

Mālama Pūpūkea-Waimea (MPW) is a Hawai'i non-profit organization founded on the North Shore of O'ahu in 2005. Our mission is "working to replenish and sustain the natural and cultural resources of the Pūpūkea and Waimea ahupua'a for present and future generations through active community stewardship, education, and partnerships." For eighteen years, we have focused our stewardship and education efforts on the Pūpūkea Marine Life Conservation District (MLCD), one of only three MLCDs on O'ahu and eleven statewide.

First, mahalo nui loa to Chair Inouye and WTL Committee Members Misalucha, Fevella, and Riviere (whose district includes the Pūpūkea MLCD) for co-sponsoring SB3330! We are grateful for your leadership and support for moving the bill forward.

Second, as the bill explains, sensitive areas of the Pūpūkea MLCD, particularly the Kapo'o Tidepools and Sharks Cove, have become overcrowded by visitors in recent years and this trend is predicted to increase. As the attached photos show, virtually every day of the week, 50-100 people may be walking, snorkeling, and swimming in the shallow tidepool and cove area, impacting this piko or nursery for marine life of the MLCD and nearby areas.

Detrimental levels of human use – or "anthropogenic impacts" -- are not currently mitigated, resulting in threats to marine life and limiting the use and enjoyment of this protected area by residents. Without a rest period, kapu, or other appropriate restrictions, the Kapo'o Tidepools and Sharks Cove in particular will continue to be degraded, contrary to the State's recognition, in 1983, that this spectacular area deserves the highest level of protection, not to be "loved to death."

Third, now is the ideal time to launch a three-year pilot program under the leadership of the Department of Land and Natural Resources, to: (1) assess the "carrying capacity" (i.e. the impacts to the marine life from anthropogenic uses) of sensitive areas in the MLCD, (2) monitor, document, and assess the effectiveness of mandatory and voluntary kapu or closures, and other potential restrictions, in high traffic areas; and (3) propose long-term natural resource management options to reduce

human use impacts, evaluate options for restrictions on access, and (at the same time) increase education of all users to avoid impacts. A report back to the Legislature in 2026 will help not only the Pūpūkea MLCD but, with appropriate funding and support, could set a statewide model for monitoring and managing similarly threatened nearshore protected areas, fully in line with the goals of the State's 30x30 Holomua Initiative.

In conclusion, MPW fully supports the bill and asks the Committee to move it forward with only these clarifying amendments, as suggested by Friends of Hanauma Bay, a sister organization that has direct experience with recent carrying capacity studies of the Hanauma MLCD:

1. Page 4, line 10: Unlike Hanauma Bay, there are no plans to restrict access to the Pupukea marine life conservation district and the associated Waimea and Pupukea beach parks or protect these areas from human access.

Recommend **bolded** change: Unlike Hanauma Bay, there are no plans to **mitigate ongoing and increasing anthropogenic impacts** to the Pūpūkea marine life conservation district and the associated Waimea and Pūpūkea beach parks.

2. Page 5, line 2: The results of unlimited human access to the sensitive areas of the Pupukea marine life conservation district appear to

Recommend change to: The results of unlimited human access to the sensitive areas of the Pupukea marine life conservation district (**delete "appear to"**)

3. Page 6, line 13: propose long—term management options to reduce the impact of

Recommend **bolded** change: propose long—term **natural resource** management options to reduce the impact of

4. Page 7, line 11: (3) Propose long—term management options to reduce the

Recommend **bolded** change: (3) Propose long—term **natural resource** management options to reduce the

5. Page 7, line 15: (b) In establishing and conducting the Pupukea marine life conservation district carrying capacity pilot program, the department of land and natural resources shall consult with the city and county of Honolulu; university of Hawaii, including the institute of marine biology; and nonprofit community organizations in the ahupuaa of Pupukea and Waimea.

Recommend **bolded** change: (b) In establishing and conducting the Pupukea marine life conservation district carrying capacity pilot program, the department of land and natural resources shall consult with the city and county of Honolulu; university of Hawaii, including the institute of marine biology; **other state and federal agencies and subject matter experts as appropriate**; and nonprofit community organizations in the ahupuaa of Pupukea and Waimea.

6. Page 8, line 13: The sum appropriated shall be expended by the department of land and natural resources for the purposes of this Act.

Recommend **bolded** change: The sum appropriated shall be expended by the department of land and natural resources **only** for the purposes of this Act.

For more information about the Kapo'o Tidepools, please see this story map and short video:

<https://storymaps.arcgis.com/stories/f0e9e87fadc34e9ebe0600a01ebf995d>

https://www.youtube.com/watch?v=2mVHVLr1EUA&ab_channel=BenDuncan

Mahalo nui and best regards,



Denise Antolini
President, MPW

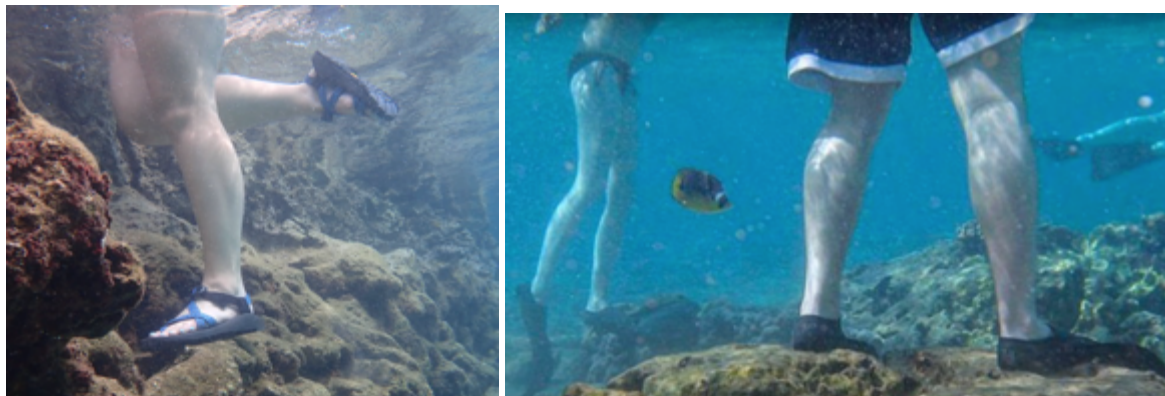
Kapoʻo Tidepools, Pūpūkea MLCD



Sharks Cove area of MLCD



Examples of Trampling and Harassment in Kapo’o and Sharks Cove



8 snorkelers pursuing a Honu in shallow waters of Sharks Cove



SB-3330

Submitted on: 1/30/2022 12:01:26 PM

Testimony for WTL on 1/31/2022 1:00:00 PM

Submitted By	Organization	Testifier Position	Remote Testimony Requested
Richard Pezzulo	Testifying for Hi`ipaka LLC	Support	No

Comments:

The protection and preservation of our sensitive marine resources supports Waimea Valley's mission to preserve and perpetuate the human, natural and cultural resources of Waimea Valley for future generations through stewardship and education. Waimea Valley is one of few intact ahupua'a on Oahu. The preservation of this important ahupua'a cannot be accomplished without the protection of the MLDC. Hi`ipaka LLC, Waimea Valley fully supports this important bill.

SB-3330

Submitted on: 1/31/2022 6:52:56 AM

Testimony for WTL on 1/31/2022 1:00:00 PM

Submitted By	Organization	Testifier Position	Remote Testimony Requested
Maxx Phillips	Testifying for Center for Biological Diversity	Support	No

Comments:

The Center strongly supports this bill and asks the Committee to please move it forward with the clarifying amendments suggested by Mālama Pūpūkea-Waimea and Friends of Hanauma Bay.

Mahalo,

Maxx Phillips, Esq.

Hawai'i Director and Staff Attorney

Center *for* Biological Diversity

1188 Bishop Street, Suite 2412

Honolulu, Hawai'i 96813

SB-3330

Submitted on: 1/29/2022 7:08:30 AM

Testimony for WTL on 1/31/2022 1:00:00 PM

Submitted By	Organization	Testifier Position	Remote Testimony Requested
Angela Huntemer	Individual	Support	No

Comments:

As an avid North Shore swimmer and snorkeler I have witnessed first hand the proliferation of life in the Pupukea MLCD during the lock down and it subsequent destruction during the summers of 2020 and 2021. Based on my personal experience I would advocate for a complete shut down of the Sharks Cove/Three Tables area for the maximum time attainable. At the very least there should be a system similar to that of Haunama Bay. Although it may be ostensibly more complicated to close off the entrance to the Sharks Cove and Three Tables area, a temporary solution would be movable riot control fencing that the city or state must have somewhere. It was a horror show in the MLCD during the period of high tourist use over the last few years. Hoards of people were trampling over the coral, trying to touch and ride on turtles, swimming straight into schools of fish and deliberately dismembering urchins and other organisms in the tide pools. I tried to calmly inform and redirect but honestly it took a huge toll on me emotionally to watch the destruction of this important marine area first hand. We HAVE TO find a solution for protecting the MLCD better. The destruction that has been inflicted since Summer 2020 by the overuse will take years to recover from. The food truck park owned by Hanopohaku opposite Sharks Cove is a significant source of first time, uneducated "snorkelers" who rent equipment from the businesses there. They are specifically given reef walkers instead of fins. This means that they stand and walk on the coral. The businesses at Hanopohaku are the source of a significant propotion of the trash in the bins and on the ground in the public park at Sharks Cove. (One of my best friends picks up trash there on a very regular basis - here 808 cleanups spot) Foodland Pupukea also sells items that could be used illegally such as nets, with no explanation of the prohibition of disturbing wildlife or rocks in the MLCD. There is SO MUCH work to be done to insure that the Pupukea-Waimea MLCD gets the protection it deserves as a world class dive and snorkel site but more mportantly a varied ecosystem with the kind of biodiversity that seeds surrounding waters. Please pass this bill. Mahalo. Angela Huntemer MEd, Kahuku



*Dedicated to the conservation of coastal and marine environments,
emphasizing stewardship of the natural resources of Hanauma Bay*

To: Senator Lorraine R. Inouye, Chair; Senator Gilbert S.C. Keith-Agaran, Vice Chair;
and Members of the Committee on Water and Land (WTL)

Date: Monday, January 31, 2022

Time: 1 p.m.

Place: Conference Room 229 & Videoconference

**Re: STRONG SUPPORT FOR SB3330 RELATING TO THE PUPUKEA MARINE LIFE
CONSERVATION DISTRICT**

Aloha Chair Inouye, Vice Chair Keith-Agaran, and WTL Committee Members,

Friends of Hanauma Bay (FOHB) strongly supports SB3330 which proposes a three-year pilot program to assess the carrying capacity of certain areas of the Pupukea Marine Life Conservation District (MLCD) to inform the best natural resource management of this sensitive, varied, and much-beloved protected marine environment on North Shore Oahu.

Established in 1983 and expanded in 2003, the Pupukea MLCD receives so many residents and non-resident visitors that a carrying capacity of the anthropogenic stressors impacting this unique MLCD is long overdue.

As we found at Hanauma Bay, a series of carrying capacity surveys focusing on different biological parameters pre-COVID and during its COVID Closure in 2020 were critical to documenting the extent of anthropogenic stressors from overtourism on Hanauma's fragile marine environment. These surveys confirmed the community's long standing concerns about the adverse impacts of overtourism, and led to a renewed commitment to greatly reducing the number of daily visitors, the implementation of a reservation system, reduced visitor hours, and Hanauma's closure to visitors two days a week. These measures help ensure that Hanauma's unprecedented natural resurgence during its COVID closure to visitors is maintained.

Unlike Hanauma Bay, the Pupukea MLCD is open to visitors 24 hours every day of the year which allows for unlimited, unsupervised access to its most sensitive marine ecosystems. Even assuming no intent to harm, there is enough data about serious anthropogenic impacts on sensitive marine environments around the world that merit the implementation of a carrying capacity study of Pupukea.



*Dedicated to the conservation of coastal and marine environments,
emphasizing stewardship of the natural resources of Hanauma Bay*

Further, the Department of Land and Natural Resources Division of Aquatic Resources has a history of strong collaborative engagement with the community and Malama Pupukeya Waimea. This should greatly assist with implementing this much-needed carrying capacity pilot project and ensure the creation of a science-driven natural resource management plan that has full community support.

Mahalo for the opportunity to testify in **strong support of SB3330.**

With Aloha,

Lisa Bishop
President
Friends of Hanauma Bay

SB-3330

Submitted on: 1/29/2022 2:41:04 PM

Testimony for WTL on 1/31/2022 1:00:00 PM

Submitted By	Organization	Testifier Position	Remote Testimony Requested
Bill Quinlan	Individual	Support	No

Comments:

Malama Pupukea Waimea is doing a very important job protecting the Pupukea Marine Life Conservation District.

Passing this bill is critical to ensure that the MLCDC can continue to be protected going forward.

PLEASE pass this bill.

SB-3330

Submitted on: 1/30/2022 9:05:21 AM

Testimony for WTL on 1/31/2022 1:00:00 PM

Submitted By	Organization	Testifier Position	Remote Testimony Requested
Larry McElheny	Individual	Support	No

Comments:

Aloha

I strongly support SB 3330.

Mahalo

Larry McElheny

(808) 237-9354

SB-3330

Submitted on: 1/30/2022 9:40:30 AM

Testimony for WTL on 1/31/2022 1:00:00 PM

Submitted By	Organization	Testifier Position	Remote Testimony Requested
David Orr	Individual	Support	No

Comments:

I support investigating how to mitigate the overcrowding of the Pupukea Marine Life Conservation District. Attention must be brought to the slow-down of traffic on Kamehameha Hwy. and protection of the turtles, and more surveillance is needed over the Pupukea-Shark's Cove area. The Malama Pupukea organization and the Trust for Public Land deserves all of our support

SB-3330

Submitted on: 1/30/2022 10:01:42 AM

Testimony for WTL on 1/31/2022 1:00:00 PM

Submitted By	Organization	Testifier Position	Remote Testimony Requested
Anne chung	Individual	Support	No

Comments:

I am writing in strong support of SB3330. As a graduate student, I conducted ecological and social surveys of the Kapoo tidepools, I saw firsthand the crowded intertidal environment and how our actions could potentially be negatively affected the benthic marine and coastal ecosystems. The pupukea marine life conservation district is a special and unique place, with deep cultural and biological significance to us all. This would be a great opportunity to further understand how we can protect it. Mahalo for your efforts.

Delivered by submission to: www.capitol.hawaii.gov

January 30, 2022

Senator Lorraine R. Inouye, Chair
Senator Gilbert S.C. Keith-Agaran, Vice Chair
Hawai‘i State Senate Committee on Water and Land
Hearing: Monday, January 31, 2022, 1:00 p.m.
Conference Room 229 & Videoconference

Re: **In Support of SB3330** – Relating to the Pūpūkea Marine Life Conservation District.

Aloha Chair Inouye, Vice Chair Keith-Agaran, and Members of the Committee:

Mahalo for the opportunity to provide testimony **in strong support** of establishing and conducting a carrying capacity pilot program for the Pūpūkea Marine Life Conservation District (MLCD). In my home community of Pūpūkea, the MLCD is where I fostered my passion for coastal ecology and marine conservation which led me to my career in marine resource management in Hawai‘i.

The passage of SB3330 will support the widely accepted Holomua: Marine 30x30 Initiative led by the State Department of Land and Natural Resources, Division of Aquatic Resources to effectively manage 30% of Hawai‘i’s nearshore waters by 2030.

Effective management of our marine resources includes place-based planning. The establishment of **a carrying capacity pilot program for the Pūpūkea MLCD will be a source of place-based information crucial for achieving Hawai‘i’s makai 30x30 goals.** Legislation is one of many tools to compliment this statewide effort including leadership in marine resource management demonstrated by this committee.

I reside in Pūpūkea and continue to observe the anthropogenic pressures mentioned in this bill that affect marine ecosystem health, coastal resilience in the face of climate change, cultural and recreational activities. I am the eyes on the ground. As a concerned resident of Pūpūkea and an advocate for sustainable and balanced management of our marine and coastal resources, culture, and economic wellbeing, **I kindly ask for your support in passing SB3330.**

Thank you for this opportunity to comment and for your thoughtful consideration of SB3330 that will ultimately lead to effective management of Hawai‘i’s nearshore waters. Mahalo nui.

Respectfully,

Keelan Barcina
Pūpūkea resident

SB-3330

Submitted on: 1/30/2022 10:58:32 AM

Testimony for WTL on 1/31/2022 1:00:00 PM

Submitted By	Organization	Testifier Position	Remote Testimony Requested
Joe Wilson	Individual	Support	No

Comments:

Senate Committee on Water and Land,

As a resident of North Shore O'ahu and member of numerous grassroots community groups dedicated to the protection of our region's sensitive natural and cultural resources, I write in strong support of SB3330, requiring the Department of Land and Natural Resources to establish and conduct the Pupukea marine life conservation district carrying capacity pilot program.

I also support and echo the clarifying amendments recommended by Malama Pupukea-Waimea, a vital steward of the area.

Thank you for finally addressing these long-neglected concerns,

Joe Wilson

Kaunala Ahu'pua'a

Ko'olau Waialua Alliance

Malama Waiale'e Ohana

SB-3330

Submitted on: 1/30/2022 11:30:46 AM

Testimony for WTL on 1/31/2022 1:00:00 PM

Submitted By	Organization	Testifier Position	Remote Testimony Requested
Roberts Leinau	Individual	Support	No

Comments:

Some of our popular nearshore waters are literally being loved [stressed] to death. SB3330 is an important opportunity to explore better ways of protecting an important sensitive area. As a long term regular recreational visitor to the Pupukea Marine Life Conservation area I can testify first hand that the Kapo'o tide pool needs more support than it currently receives. Watching degeneration is both unconscionable and unethical. We all need to work toward how to improve our natural assets. Anthropomorphic impacts need to be quantitatively assessed in the context of appropriate carrying capacity. Mahalo for your support!

SB-3330

Submitted on: 1/30/2022 11:51:49 AM

Testimony for WTL on 1/31/2022 1:00:00 PM

Submitted By	Organization	Testifier Position	Remote Testimony Requested
Sydney Covell	Individual	Support	No

Comments:

Aloha,

My name is Sydney Covell and I am a North Shore resident and user of the Pupukea Marine Life Conservation District. I am raising my two young children to respect our natural surroundings and understand the complex life that the MLCD sustains. I strongly support SB3330 so that we can see the impacts of human use on the Kapoo tide pools. These are sacred spaces that are vital to the biodiversity of our fragile ecosystem and deserve better protection.

Mahalo,

Sydney Covell

SB-3330

Submitted on: 1/30/2022 12:20:07 PM

Testimony for WTL on 1/31/2022 1:00:00 PM

Submitted By	Organization	Testifier Position	Remote Testimony Requested
Susan Cortes	Individual	Support	No

Comments:

I strongly support managing the overcrowding that I can observe, almost daily, at the Pūpūkea MLCD. The marine resources there are degraded by the number of visitors to this once pristine area and some sort of management must be devised. Since Haunama Bay has limited the days and times it is open, the overflow of people wanting a marine life experience has ballooned in Pūpūkea. Please support SB3330.

Mahalo,

Sue Cortés

SB-3330

Submitted on: 1/30/2022 12:28:23 PM

Testimony for WTL on 1/31/2022 1:00:00 PM

Submitted By	Organization	Testifier Position	Remote Testimony Requested
Jim Blattau	Individual	Support	No

Comments:

Please support SB3330. The Pūpūkea MLCD is in dire need of management of the many, many users of this resource. The various species of coral and fish need times to rest and recover from the multitudes of users that come their environment. Please help protect this fragile, priceless resource, The Pūpūkea Marine Life Conservation District, by supporting SB3330.

Mahalo, Jim Blattau

SB-3330

Submitted on: 1/30/2022 12:43:12 PM

Testimony for WTL on 1/31/2022 1:00:00 PM

Submitted By	Organization	Testifier Position	Remote Testimony Requested
Cynthia Punihaole Kennedy	Individual	Support	No

Comments:

To: The Honorable Lorraine Inouye, Chair, The Honorable Gilbert Keith-Agaran, Vice-Chair, and Members of the Senate Committee on Water and Land

I strongly support the appropriation of monies from the Department of Land and Natural Resources to establish and conduct the Pupukea marine life conservation district carrying capacity pilot program.

SB-3330

Submitted on: 1/30/2022 12:47:08 PM

Testimony for WTL on 1/31/2022 1:00:00 PM

Submitted By	Organization	Testifier Position	Remote Testimony Requested
Yvonne Alexander	Individual	Support	No

Comments:

I have lived on the the North Shore of Oahu for 57 years. I raised 2 childern here as well.

I am an active member of both the Sunset Beach Community Association and was its president for 3 years. I am also the treasurer for the North Shore Outdoor Circle. I am involved with many active volunteer groups as well.

For many years my beaches of choice to snorkle were Kapo'o Tidepools and Sharks Cove, often times my friend and I would be the only people in the water. Those days are gone. I have not been to my favorite spots for 5 years or more.

Things started to change out here as tourists discovered the North Shore. Traffic increased and all our beaches started to fill with non-residents. Scuba and surf schools took over beaches especially where kids used to learn to surf.

We are at the mercy of vacation rentals in our neighborhoods. Parking for people not living on the beach has become impossible.

Now that we have food trucks across from Kapo'o Tidepools and Sharks Cove it is overused and unsupervised. The water now on most days is cloudy and park trash cans are alway overflowing. Parking is impossible and cars illegally parked are hardly ever ticketed.

The impact of tourism on the North Shore is out of control. We get no help to control our beaches, bike paths, parking and traffic.

I am in support of SB3330 and hope that measures can be put in place to minimize impact and protect this special place for generations to come.

Sincerely,

Yvonne Alexander

LATE

SB-3330

Submitted on: 1/30/2022 1:33:52 PM

Testimony for WTL on 1/31/2022 1:00:00 PM

Submitted By	Organization	Testifier Position	Remote Testimony Requested
Andrea Woods	Individual	Support	No

Comments:

Shark's Cove and the tidepools need protection against overcrowding, and SB3330 will allow that to happen.

LATE

SB-3330

Submitted on: 1/30/2022 1:54:32 PM

Testimony for WTL on 1/31/2022 1:00:00 PM

Submitted By	Organization	Testifier Position	Remote Testimony Requested
John Thielst	Individual	Support	No

Comments:

Dear commitee,

I am a 37 year resident on Pahoe Rd right across from sharks cove and use the area very much.

Due to population growth and the tremendous increase in touriustum this marine area is dieing and needs help.

This bill is a step forward to a better and more up to date managenment of this Hawaii state enviroment marine preserve.

Please pass this bill.

Thank you, Regards

John

LATE

SB-3330

Submitted on: 1/30/2022 1:59:51 PM

Testimony for WTL on 1/31/2022 1:00:00 PM

Submitted By	Organization	Testifier Position	Remote Testimony Requested
Samantha Mislinski	Individual	Support	No

Comments:

I grew up swimming in the Pūpūkea-Waimea Marine Life Conservation District. I have seen the marine habitat improve since I was a child. There is now more coral, more fish, and more diversity of fish. I am however worried. this past summer I saw this MLCD more crowded with people than I have ever seen. It was hard to find places to sit on the beaches, swim in the water without running into someone else, find parking, and I saw more litter than I have ever seen. It was also clear over this past summer that there were more people using the park than the facilities could handle. Even though the trashcans were being emptied every day, they were overflowing with trash by noon. Every single day there was a truck pumping the septic tank at Waimea. The amount of litter in the park and in the water made me want to cry every single time I went to the park. The traffic that was caused by people trying to find parking or crossing the street, not in the crosswalk, to eat at the food trucks impacted my family and I on a daily bases. This overuse of the park has a defiant impact on the marine environment. On the days were there was a high number of visitors to the parks I saw fewer fish and fewer species in all areas of the MLCD. The behavior of the fish changed on these days. They hid more. Throughout the summer I saw multiple groups of people harassing turtles, dolphins, and monk seals. I also noticed more coral being trampled and broken by people walking on the reef. This beautiful area desperately needs more protection and this bill will help alleviate some of the stress on this habitat and the local community.

LATE

SB-3330

Submitted on: 1/30/2022 2:09:22 PM

Testimony for WTL on 1/31/2022 1:00:00 PM

Submitted By	Organization	Testifier Position	Remote Testimony Requested
Monique Cole	Individual	Support	No

Comments:

I support bill SB3330 because I feel as though the Pūpūkea Marine Life Conservation District is getting “loved to death” by visitors, whether they are from the Mainland, neighbor islands, or here on Oahu. We need to know the true carrying capacity of this special place that is a nursery for marine life, supporting ecosystems along the entire North Shore.

As a longtime North Shore resident (my family moved here in 1968, the year I was born) and an avid water-person, I frequently snorkel in the MLCD with my kids and my parents. We try to avoid peak hours by going on weekdays, in the mornings or late afternoons, yet we often still face crowded parking lots and crowded waters. It breaks our hearts to see people in reef tabs and diving fins trampling the fragile coral and harassing the protected marine animals. Sometimes we try to educate visitors about floating over the surface instead of standing on the reef, but it is an uphill battle.

The Pūpūkea MLCD, along with other conservation measures and changing land use, has created a much richer ecosystem than when I was growing up here. It fills me with joy to see honu, rays, rare fish and nudibranchs, and the occasional monk seal -- animals we never or rarely saw in the 1970s and 80s. Sadly, these beautiful animals and the stunning setting are attracting too many people for their own good.

Visitors to Hawaii are changing, they are often seeking adventure rather than just sipping mai tais on the beach. That’s great, but we have to protect the natural areas where we all are recreating, for our own sake and for future generations of marine life and humans. SB3330 is a step in the right direction to protect this precious marine park.

Mahalo,

Monique Cole

SB-3330

Submitted on: 1/30/2022 5:51:44 PM

Testimony for WTL on 1/31/2022 1:00:00 PM

Submitted By	Organization	Testifier Position	Remote Testimony Requested
Randolph Moore	Individual	Support	No

Comments:

I live two miles from Sharks Cove and have witnessed the steady increase of visitors to the Pupukea marine life conservation district. The 3-year study of the carrying capacity of this resource proposed by this bill will provide the basis for evidence-based effective management of the area.