

DAVID Y. IGE  
GOVERNOR



CRAIG K. HIRAI  
DIRECTOR

GLORIA CHANG  
DEPUTY DIRECTOR

EMPLOYEES' RETIREMENT SYSTEM  
HAWAII EMPLOYER-UNION HEALTH BENEFITS TRUST FUND  
OFFICE OF THE PUBLIC DEFENDER

**STATE OF HAWAII**  
**DEPARTMENT OF BUDGET AND FINANCE**  
P.O. BOX 150  
HONOLULU, HAWAII 96810-0150

ADMINISTRATIVE AND RESEARCH OFFICE  
BUDGET, PROGRAM PLANNING AND  
MANAGEMENT DIVISION  
FINANCIAL ADMINISTRATION DIVISION  
OFFICE OF FEDERAL AWARDS MANAGEMENT (OFAM)

**WRITTEN ONLY**

TESTIMONY BY CRAIG K. HIRAI  
DIRECTOR, DEPARTMENT OF BUDGET AND FINANCE  
TO THE HOUSE COMMITTEE ON FINANCE  
ON  
SENATE BILL NO. 2070, S.D.1

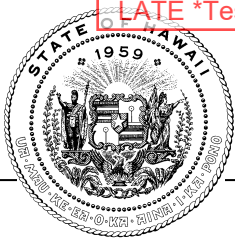
**April 6, 2022**  
**1:30 P.M.**  
**Room 308 and Videoconference**

RELATING TO SPECIAL PURPOSE REVENUE BONDS TO ASSIST THE HAWAIIAN LEGACY REFORESTATION INITIATIVE TO RESTORE HAWAII'S FORESTS AND NATURAL RESOURCES.

The Department of Budget and Finance (the "Department") offers the following comments on Senate Bill No. 2070, S.D. 1, which authorizes the issuance of Special Purpose Revenue Bonds (SPRB) to assist the Hawaiian Legacy Reforestation Initiative LLC, a Hawaii corporation, to generate a sustainable model of endemic reforestation, ecosystem revitalization, endangered species recovery, and carbon credit sequestering by planning, designing, constructing, and equipping private and public land owners with tools for endemic forest development, processing and distribution of forest products, including eco-assets such as tree planting, endangered species management, endemic species propagation, value-added agriculture, advanced materials, sustainable timber, carbon credits, Hawaii cultural practice, fine art, and Hawaii made products pursuant to Part IV, Chapter 39A, Hawaii Revised Statutes. The amount of the authorization is unspecified.

The Department would like to inform the Legislature and prospective SPRB parties that should the legislation be approved, approval of the SPRB issuance and conduit loan will require further review of the financing proposal to ensure compliance with all federal, state and credit underwriting requirements. Additionally, the Department would like to note that House Bill No. 1829, H.D. 2, S.D. 1, and Senate Bill No. 2812, S.D. 2, H.D. 1, specifies that no SPRBs requiring an allocation of annual state ceiling under Section 39B-2 Hawaii Revised Statutes, shall be authorized after June 30, 2022 and before December 31, 2028, unless requested by the Governor and approved by the Legislature. To permit the issuance of SPRBs authorized during this session, may we suggest an effective date of June 29, 2022 for Senate Bill 2070, S.D.1. For additional information, please consult our FAQ located at the following link: <http://budget.hawaii.gov/wp-content/uploads/2012/11/SPRB-FAQ.pdf>.

Thank you for your consideration of our comments.



LATE \*Testimony submitted late may not be considered by the Committee for decision making purposes.

**STATE OF HAWAII**  
**OFFICE OF PLANNING**  
**& SUSTAINABLE DEVELOPMENT**

DAVID Y. IGE  
GOVERNOR

MARY ALICE EVANS  
DIRECTOR

235 South Beretania Street, 6th Floor, Honolulu, Hawaii 96813  
Mailing Address: P.O. Box 2359, Honolulu, Hawaii 96804

Telephone: (808) 587-2846  
Fax: (808) 587-2824  
Web: <https://planning.hawaii.gov/>

Statement of  
**MARY ALICE EVANS**  
Director, Office of Planning and Sustainable Development  
before the

**HOUSE COMMITTEE ON FINANCE**

Wednesday, April 6, 2022  
1:30 PM

State Capitol, Conference Room 308 & Videoconference  
in consideration of

**SB 2070, SD 1**

**RELATING TO SPECIAL PURPOSE REVENUE BONDS TO ASSIST THE HAWAIIAN  
LEGACY REFORESTATION INITIATIVE TO RESTORE HAWAI'I'S FORESTS AND  
NATURAL RESOURCES.**

Chair Luke, Vice Chair Yamashita, and Members of the House Committee on Finance:

The Office of Planning and Sustainable Development (OPSD) **offers comments and concerns** on SB 2070, SD 1, which authorizes the Department of Budget and Finance to issue special purpose revenue bonds to assist Hawai'i Legacy Reforestation Initiative LLC in their mission to proliferate a sustainable model of endemic reforestation, ecosystem revitalization, endangered species recovery, and carbon credit sequestering.

The Office of Planning and Sustainable Development supports planting trees to sequester carbon, reduce heat stress due to climate change and restore native forests. However, OPSD published the [\*Feasibility and Implications of Establishing a Carbon Offset Program in the State of Hawai'i\*](#) in December 2019, strongly recommending against State's establishment of a Carbon Offset Program administered by the State Government. The feasibility analysis noted that:

1. It is unlikely that the State of Hawai'i would generate significant revenue through the production of offsets, and
2. Any trading of offset credits produced within Hawai'i would be limited by the State's Zero Emissions Clean Economy target (p.67).

The Office of Planning and Sustainable Development understands that the carbon crediting/carbon offsetting conducted by Hawai'i Legacy Reforestation Initiative LLC, as proposed by this measure is administered privately by that business.

However, the Office of Planning and Sustainable Development has concerns about the State's consideration to provide Special Purpose Revenue Bond loan financing to assist qualifying private capital improvement projects in relation to carbon offsetting.

Thank you for the opportunity to testify on this measure.

**WILKINSON KOA FURNITURE**  
96-1276 Waihona Street, Unit 115  
Pearl City, Hawaii 96782

March 11, 2022

The Honorable Sylvia Luke, Chair  
The Honorable Kyle T. Yamashita, Vice Chair  
Members of the House Committee on Finance  
31st Hawaii State Legislature, Regular Session 2022  
State of Hawaii

Measure Title: RELATING TO SPECIAL PURPOSE REVENUE BONDS TO ASSIST THE HAWAIIAN LEGACY REFORESTATION INITIATIVE TO RESTORE HAWAII'S FORESTS AND NATURAL RESOURCES.

Description: Authorizes the Department of Budget and Finance to issue special purpose revenue bonds to assist Hawaiian Legacy Reforestation Initiative, LLC in its mission to proliferate a sustainable model of endemic reforestation, ecosystem revitalization, endangered species recovery, and carbon credit sequestering. Effective 7/12050. (SD1)

Chair Sylvia Luke, Vice Chair Kyle T. Yamashita, and Members of the House Committee on Finance, I submit the following testimony in support of Senate Bill SB 2070 SD1 regarding Hawaiian Legacy Reforestation Initiative LLC.

I am an artisan who specializes in creating one-of-a-kind koa furniture and heirlooms with the utmost care and skill. I look forward to the success of Hawaiian Legacy Lumber and Hamakua Mill forest industry, that would provide diversity and strengthen the economy of Hawai'i.

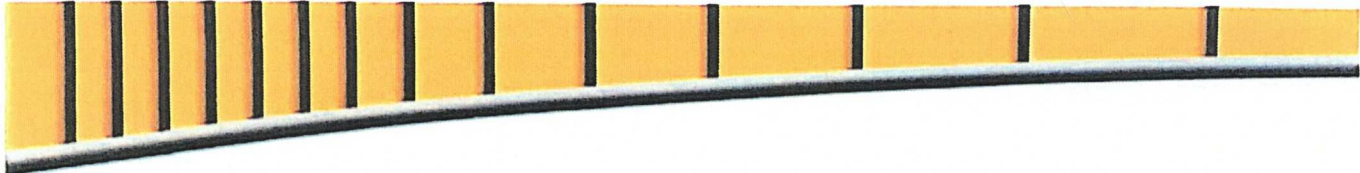
Hawaiian Legacy Hardwoods committed years of hard work towards growing native Hawaiian trees that sequestered carbon and added to the biodiversity of the area. Thinning the forest improves the growth condition and contributes to sturdier, quality trees. Forest specialists say that thinning also ensures the carbon sequestration for dozens to hundreds of years. Wilkinson Koa Furniture knows the importance of sustainability in the koa industry. My commitment is to offer full support towards growing the trees that are necessary to provide material for artisans like myself to continue creating Koa furniture and art works for the foreseeable future.

The importance that Hawaiian Legacy Lumber and Hamakua Mill will bring to the State of Hawai'i will be increased and new employment opportunities to help generate a more diverse workforce. Wilkinson Koa Furniture supports SB 2070 SD1.

Sincerely,

**Alan E. Wilkinson, Owner**

Alan E. Wilkinson  
Wilkinson Koa Furniture



March 11, 2022

The Honorable Sylvia Luke, Chair  
The Honorable Kyle T. Yamashita, Vice Chair  
Members of the House Committee on Finance  
31st Hawaii State Legislature, Regular Session 2022  
State of Hawaii

Measure Title: RELATING TO SPECIAL PURPOSE REVENUE BONDS TO ASSIST THE HAWAIIAN LEGACY REFORESTATION INITIATIVE TO RESTORE HAWAII'S FORESTS AND NATURAL RESOURCES.

Description: Authorizes the Department of Budget and Finance to issue special purpose revenue bonds to assist Hawaiian Legacy Reforestation Initiative, LLC in its mission to proliferate a sustainable model of endemic reforestation, ecosystem revitalization, endangered species recovery, and carbon credit sequestering. Effective 7/12050. (SD1)

Chair Sylvia Luke, Vice Chair Kyle T. Yamashita , and Members of the House Committee on Finance on behalf of Ponsse Plc, I submit the following testimony in support of Senate Bill SB 2070 SD1 regarding Hawaiian Legacy Reforestation Initiative LLC.

Our mission at Ponsse Plc, one of the world's largest manufacturers of cut-to-length forest machines, is to contribute to our customers' success with our forest machines, products, technology expertise, and services. We look forward to the success of Hawaiian Legacy Lumber and Hamakua Mill forest industry that would provide diversity and strengthen the economy of Hawai'i.

Hawaiian Legacy Hardwoods committed years of hard work towards growing native Hawaiian trees that sequestered carbon and added to the biodiversity of the area. Thinning the forest improves the growth condition and contributes to sturdier, quality trees. Forest specialists say that thinning also ensures the carbon sequestration for dozens to hundreds of years. Posse provides the equipment and expertise needed to assist Hawaiian Legacy Lumber and Hamakua Mill with their workforce and the development of their business. Our commitment to offer full customer support, training solutions, and collaborative consulting in all phases of our service will contribute to their successful operations.

The importance that Hawaiian Legacy Lumber and Hamakua Mill will bring to the State of Hawai'i will be increased and new employment opportunities to help generate a more diverse workforce. Ponsse Plc supports SB 2070 SD1.

Sincerely, 

Ponsse Plc



Ponsse North America, Inc. 4400 International Lane, Rhinelander WI 54501  
Phone 715 369 4833, Fax 715 369 4838



# DAMIEN MEMORIAL SCHOOL

March 11, 2022

The Honorable Sylvia Luke, Chair  
The Honorable Kyle T. Yamashita, Vice Chair  
Members of the House Committee on Finance  
31st Hawaii State Legislature, Regular Session 2022  
State of Hawaii

SB 2070 SD1

Measure Title: RELATING TO SPECIAL PURPOSE REVENUE BONDS TO ASSIST THE HAWAIIAN LEGACY REFORESTATION INITIATIVE TO RESTORE HAWAII'S FORESTS AND NATURAL RESOURCES.

Description: Authorizes the Department of Budget and Finance to issue special purpose revenue bonds to assist Hawaiian Legacy Reforestation Initiative, LLC in its mission to proliferate a sustainable model of endemic reforestation, ecosystem revitalization, endangered species recovery, and carbon credit sequestering. Effective 7/12050. (SD1)

Chair Sylvia Luke, Vice Chair Kyle T. Yamashita , and Members of the House Committee on Finance on behalf of Damien Memorial School, I submit the following testimony in support of Senate Bill SB 2070 SD1 regarding Hawaiian Legacy Reforestation Initiative LLC.

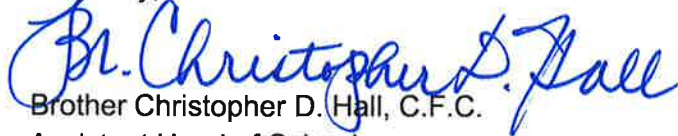
Damien Memorial School is pleased to provide a Letter of Support for SB2070 SD1; Relating to Special Purpose Revenue Bonds to assist Hawaiian Legacy Reforestation Initiative.

Damien Memorial School is a private Roman Catholic preparatory school for boys and girls in grades 6 - 12 located in Honolulu, Hawai'i. Our mission is to guide students from all walks of life to become responsible, respectful, and community-minded individuals who are ready for the challenges of the future. The mission of Hawaiian Legacy Reforestation Initiative (HLRI) to restore the integrity and diversity of the native ecosystem of Hawai'i through reforestation, building a sustainable future for our state is a solid foundation to help Damien School with their mission. Damien School looks forward to our collaboration with HLRI to help prepare our students to become responsible members of our community through their programs.

Damien, its students, and members of our Damien community plan to participate in HLRI's educational and economic development programs. One example of our collaboration would be to plan and develop a "work and learn model" at the school where students would design and build an on-site nursery, propagate native Hawaiian seeds, care for the plants, then plant them through HLRI's reforestation project. HLRI field crew would train and assist students in the field. Upon successful completion of this program students gain valuable experiences and emerge with new in-demand skills and knowledge to advance their careers.

Damien School recognizes the importance of our students to prepare for their future by strengthening our State's ability to retain our local people with quality jobs and employment opportunities. That is the reason we support SB2070 SD1 and look forward to our collaboration with Hawaiian Legacy Reforestation Initiative.

Sincerely,

A handwritten signature in blue ink that reads "Br. Christopher D. Hall". The signature is written in a cursive style with a large initial "B".

Brother Christopher D. Hall, C.F.C.

Assistant Head of School





# THE KAHALA

HOTEL & RESORT

Honolulu, Hawaii

March 11, 2022

The Honorable Sylvia Luke, Chair  
The Honorable Kyle T. Yamashita, Vice Chair  
Members of the House Committee on Finance  
31st Hawaii State Legislature, Regular Session 2022  
State of Hawaii

Measure Title: RELATING TO SPECIAL PURPOSE REVENUE BONDS TO ASSIST THE HAWAIIAN LEGACY REFORESTATION INITIATIVE TO RESTORE HAWAII'S FORESTS AND NATURAL RESOURCES.

Description: Authorizes the Department of Budget and Finance to issue special purpose revenue bonds to assist Hawaiian Legacy Reforestation Initiative, LLC in its mission to proliferate a sustainable model of endemic reforestation, ecosystem revitalization, endangered species recovery, and carbon credit sequestering. Effective 7/12050. (SD1)

Chair Sylvia Luke, Vice Chair Kyle T. Yamashita , and Members of the House Committee on Finance on behalf of The Kahala Hotel & Resort, I submit the following testimony in support of Senate Bill SB 2070 SD1 regarding Hawaiian Legacy Reforestation Initiative LLC.

The Kahala Hotel & Resort has been an industry leader in the State of Hawaii in implementing sustainability practices in all areas of our hotel operations. We were awarded the 2020 Hawaii Green Business Award that recognizes businesses that operate in an environmentally and socially responsible manner.

Together, with Hawaiian Legacy Reforestation Initiative (HLRI), we formed the Kahala Initiative for Sustainability, Culture, and the Arts (KISCA) to help perpetuate our lands, ocean, and culture for generations to come. To date, The Kahala Resort and its guests have planted 12,758 trees to support the reforestation and environmental preservation of our island state. Consequently, our guests get a better understanding of our Hawaiian culture while making a positive impact.

This initiative is necessary for the state of Hawaii as it provides organizations and the general community a means to plant trees and make an impact towards reforestation and revitalizing the ecosystem. HLRI has made it possible for our hotel to engage their employees and guests in the process to understand the cultural relevance and environmental impact of planting trees, regenerating the forest, and taking care of our natural resources.

The Kahala Hotel & Resort supports and recommends the Hawaiian Legacy Reforestation Initiative LLC in its ability to expand its mission in Hawai'i through SB2070. The need for awareness of the cultural relevance and environmental sustainability of our state, along with creating new green jobs and revenue, will contribute to a stable and promising future.

Malama Pono,



Joe Ibarra  
General Manager  
The Kahala Hotel & Resort



1801 Kalākaua Avenue, Honolulu, Hawai'i 96815  
kelepona tel (808) 943-3500  
kelepa'i fax (808) 943-3599  
kahua pa'a web www.hawaiiiconvention.com

March 11, 2022

The Honorable Sylvia Luke, Chair  
The Honorable Kyle T. Yamashita, Vice Chair  
Members of the House Committee on Finance  
31st Hawaii State Legislature, Regular Session 2022  
State of Hawaii

SB 2070 SD1

Measure Title: RELATING TO SPECIAL PURPOSE REVENUE BONDS TO ASSIST THE HAWAIIAN LEGACY REFORESTATION INITIATIVE TO RESTORE HAWAII'S FORESTS AND NATURAL RESOURCES.

Description: Authorizes the Department of Budget and Finance to issue special purpose revenue bonds to assist Hawaiian Legacy Reforestation Initiative, LLC in its mission to proliferate a sustainable model of endemic reforestation, ecosystem revitalization, endangered species recovery, and carbon credit sequestering. Effective 7/12050. (SD1)

Chair Sylvia Luke, Vice Chair Kyle T. Yamashita, and Members of the House Committee on Finance on behalf of Hawaii Convention Center, I submit the following testimony in support of Senate Bill SB 2070 SD1 regarding Hawaiian Legacy Reforestation Initiative LLC.

The Hawaii Convention Center is pleased to provide a Letter of Support for SB2070 SD1; Relating to Special Purpose Revenue Bonds to assist Hawaiian Legacy Reforestation Initiative.

The Hawai'i Convention Center's commitment to sustainability is visible from our LEED (Leadership in Energy and Environmental Design) green building certification system to our multi-faceted approach to environmental conservation. Our Ho'omaluo program celebrates this commitment to be responsible stewards. Through our partnership with the Hawaiian Legacy Reforestation Initiative, we pledged to plant a million trees to support their mission of reforestation. These native Hawaiian trees will bring back the biodiversity of our islands while sequestering carbon.

Hawaiian Legacy Reforestation's presence is critical to our residents and our economy. This company that promotes sustainable practices also develops opportunities for employment and creates new resources. Their efforts will build our agriculture and forestry industries as Hawai'i recognized the need for diverse economic opportunities during the pandemic. They also serve as an educational resource for our state as meeting planners, guests, and our community have the opportunity to sponsor native Hawaiian trees while learning about our rich cultural history. Trees planted help to offset the carbon footprint of a typical vacation for a family of four.

The Hawai'i Convention Center is committed to our continued support of Hawaiian Legacy Reforestation. Their mission has been instrumental in the expansion of our visitor industry's engagement in environmental sustainability.

Sincerely,

Teri Orton, General Manager  
Hawaii Convention Center



LATE \*Testimony submitted late may not be considered by the Committee for decision making purposes.



# Hawaiian Legacy Forest Plan 2022 Blueprint for Going Green

Hawaiian Legacy Reforestation Initiative  
REF: SB 2070

22435 P.O. Box Honolulu, HI 96823 / [legacytrees.org](http://legacytrees.org)

## Hawaiian Legacy

We are reversing two centuries of deforestation here in Hawaii through a creative collaboration of forestry, eco-science, technology and tourism. Through these practices, we can restore 100% of our endemic forests, protect endangered species, sequester carbon and recharge watersheds through conservation partnerships in education and community engagement in Hawaii and beyond; for generations to come.



*As an island nation Hawaii requires the active participation and preservation of our resources to sustain the rare and fragile environment hosting our the industry we rely upon.”*

### WHAT WE DO

- ▶ **1. ReEstablish Endemic and Native Forest** The non-profit HLRI has created a platform to demonstrate a synergistic approach to forest restoration and management. HLRI seeks to build an alternative to traditional forestry that is economically superior by tapping into the growing ecological consciousness of the public and use educational outreach to inspire others to implement and build on these methods.
- ▶ **2. Culturally and Ecosystem ReSurgeance** Our approach takes what are traditionally separate enterprises and integrates them into a synergistic model. All are interdependent on one another and at the same time, they catalyze each other's success.
- ▶ **3. Develop New Models to Promote Sustainable Agriculture** In just over one decade, the Hawaiian Legacy family of companies have become recognized leaders in their respective fields. Having become the leader in sustainable forest timber, ecotours, the only certified carbon credit in Hawaii and the first company in the United States with the technology to geo-tag and track every tree throughout the lifetime of the tree, and been the recipient of the prestigious International Phoenix Award for conservation and preservation.
- ▶ **4. Build Hawaii's Circular Economy** HLRI has assisted in laying the framework for new industry in agriculture that connects corporate best practices and supports our rare ecosystem simultaneously, in a locally focused, globally scalable mission.

## Our Team

I am the principal shareholder and Chairman of Genesis Hotel Development LLC, an international leading provider of corporate hotel development services. I co-developed and owned several hotels in California and Hawaii, including the Maui Marriott Resort and the Fairmont Kea Lani on Maui, and have provided development and hospitality consultancy services for various hotel properties in Vancouver and Whistler, BC and Palm Desert, CA.

As a retired Hawaii State Senator, I had a distinguished political career—including being a member of staff of the U.S. Senator John F. Kennedy. During my time as Senator, I helped create the Medical and Law Schools at the University of Hawaii and its West Oahu campus, the Shoreline Management Act, and the Hawaii State Plan for economic, physical, and social development policies.

I am also named in the first edition of Best Lawyers in America and am a director of the H.N. and Frances C. Berger Foundations, one of California largest charitable organizations. I am passionate about sustainability and was one of the founders of the British Columbia Council on Sustainability and the Palm Springs Institute of Sustainability at Cal State San Bernardino, Palm Desert, CA.

Francis Wong



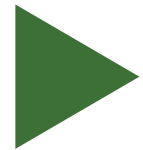
Susan Dujmovic



During my more than 30 years with HSBC Bank Canada, I held a variety of executive management positions working with the bank's domestic and international sectors in the areas of Risk Management and Governance, Compliance, and Corporate Sustainability.

I am an experienced director with extensive audit, risk, and governance expertise. I am currently Audit Committee Chair for Partnerships BC, a provincial crown corporation and procurement advisor for major infrastructure projects in BC. I was both Chair and Audit Committee Chair of the Royal Canadian Mint, a multi-billion dollar Crown Corporation, during my twelve years on the Board. The Mint has international dealings with four business lines: Canadian coin circulation; Foreign Circulation; Bullion Products and Refinery Services; and Numismatics. I also served as a Board Director of the Mutual Fund Dealer's Association, an SRO regulating over 100 mutual fund dealers and 82,000 advisors, and served on the Audit Committee and Regulatory Issues Committee.

I remain committed to community leadership, serving on the Boards of non-profit organizations, most recently as a Director and Audit Committee Chair of the Hawaiian Legacy Reforestation Initiative. I also served as Audit & Finance Committee Chair of Coast Mental Health, Chaired the Youth Exchange Committee for the Semiahmoo Rotary Club, am a Leadership Vancouver graduate and a Canada Board Diversity Council, Diversity 50 award recipient.



## Hawaiian Legacy

Jason Ho'opai



Maui born entrepreneur, Jason comes from a background in design and commercial real estate throughout the Pacific. Jason has a real estate focus in repositioning, retail, and hospitality assets, with a core interest in tenant mix, finance, and technology deployment.

Jason is accredited for multiple software startups surrounding retail intelligence, consumer behavior, and security compliance SAAS systems, among other contributions. He is a life learner with an appetite for large-scale problem solving. Currently you can find him serving as one of 4 board members of Hawaiian Legacy Reforestation Initiative (HLRI).

Jason's current focus is creating turn key programs for corporations to meet their ESG goals by generating Gold Standard Carbon Credits through reforesting Hawaii's endemic forest. He carries a dedication to our cultural history and natural beauty by being a force of good. Lastly Jason oversee's passive and active investments in San Francisco, Kona, Maui, and Oahu and currently lives in Honolulu with my 3 children and wife of 15 years.

Darrell Fox



Graduated Cum Laude with a Bachelor of Science degree in Biology from Wayne State University in 1973. My undergraduate specialty was in Botany and I did extensive graduate research at the University of Hawaii in nutrient cycling. I was twice the recipient of the Achievement Reward for College Scientists. Upon finishing up with academia, I became the managing partner of an aquaculture project. We designed a state-of-the-art cultivation system for producing premium shellfish for the restaurant industry.

As the world changes one must direct their attention to fields that will thrive under the new paradigm. Deforestation is becoming a global calamity, but it is also the signpost to an incredible opportunity. The growing shortage of tropical hardwood lumber is driving prices at an average of 13% per year. The United Nations Food and Agriculture Organization expects that rate to increase. As a hard asset, lumber of all kinds will rise in value in response to inflation. This makes it a defensive strategy in troubled economic times. I see it as my responsibility to the planet and more personally my responsibility to my wife and children to be a part of the solution.



## Our Team

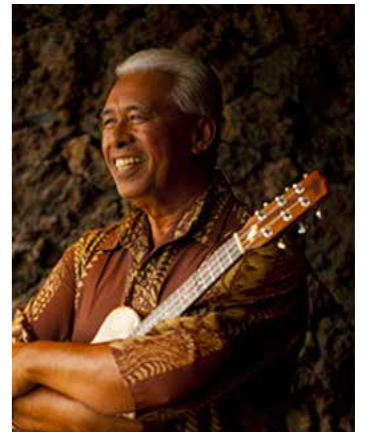
I was born and raised in the quaint sugar plantation village of Pa'auilo, Hāmākua, Island of Hawai'i, and am the youngest in a family of 12 children. My dad, John Juan Regidor, emigrated from the Philippines to Hawai'i in 1919, to work on the sugar plantation. In 1926, John married Mary Keai Mahauna. It is to my mother that I credit my love for the culture, Hawaiian music, Hawaiian language, and most importantly, Hawaiian values of laulima (cooperation, working together), hanalima (work, working with your hands), lōkahi (unity, harmony), aloha (love), kōkua (to help unconditionally), to name a few.

If I could bring one of my dreams to fruition, it would be to create a small-scale facsimile of a functioning ahupua'a. An ahupua'a was a land division that ran from mountain to the sea, enabling a sustainable environment—a symbiotic relationship of those within the community—each contributing his/her responsibility/expertise, ranging from farmers, fishermen, adze makers, healers, etc. The word "ahupua'a" is derived from "ahu" or heap (as in stones), as a heap of stones often marked the boundaries, and "pua'a," or pig, as this animal was often laid on the altar as tax to the chief of the area. While chances of a real life ahupua'a may be distant, I am currently working on bringing components of an ahupua'a to the cultural center. Plans are in progress to replant only native fauna and foliage in the lawn area near the center, and beautiful, original oil paintings by noted native Hawaiian artist Herb Kawainui Kane grace the center's wall, each telling its own story about life in an ancient ahupua'a.

As cliché as it sounds however, my most challenging and rewarding job has been that of a dad. I have five young children who mean everything to me. As any parent can tell you, the single most important thing you can do for your children is to be a good example. It is so important that we instill in them, a moral compass; one that balances personal goals with personal responsibility. I see the condition of our planet today and it saddens me. It is clear that some members of our own generation and those who came before us, lacked that type of character and have in turn, placed a huge burden on your children and mine.

No single act will repair the environment and no government will ever be able to legislate morality by passing laws. It's simply up to each one of us to make right choices and to pass on that legacy to our children. HLH was created to allow a new generation of socially responsible individuals an opportunity to secure financial independence for themselves and their loved ones while helping the planet in the process.

Earl Kamakaonao ona Regidor



Jeff Dunster





# Hawaiian Legacy

Jack Jefferey



I feel it's my responsibility to assist not only the refuge, but other organizations such as Hawaiian Legacy Hardwoods, The Nature Conservancy of Hawaii, and Hawaii's Watershed Partnerships in protecting Hawaii's native forest habitat through reforestation and habitat protection. It's vitally important to all generations to be socially responsible for the welfare of our planet and all the other species that share our home. Our only home.

I retired from USFWS in 2008, and still volunteer for the refuge as often as I can. I also visit the refuge several times a week leading birding tours for birders from around the world, telling them the story of Hakalau Forest. Retirement also allows me more time for world travel and pursuing my other career; Wildlife photography.

Tellus Fix



Born and raised in Hawai'i, Tellus brings more than 45 years of working experience on Hawaiian ranches and forest supporting farming & agricultural operations. An avid waterman, outdoorsman and carpenter, Tellus provides a host of skills to bring practical knowledge to work in building forest.

Additionally, Tellus is responsible for program development for field operations and forest management including the successful deployment of those programs to meet Hawaiian Legacy's reforestation initiatives for Oahu.



# Our Team

John Farias



I am a graduate of the University of Hawaii and have had a long career serving the public as a government employee and volunteer. I was elected to the Hawaii County Council; served as a Regent and Chair of the University of Hawaii Board of Regents; was appointed as Chairman of the Hawaii State Board of Agriculture; was instrumental in establishing the Oceanic Thermal Energy Conservation (OTEC) facility on Hawaii Island; served 24 years as a member of the Board of Directors, and later as Chairman of the Board of St. Francis Hospital; and served as Director and Chair of the Healthcare Association of Hawaii for over a decade. In the private sector, I continue to champion Hawaii's agriculture, aquaculture, and energy-related industries as engines of economic opportunity and stability for Hawaii by mentoring innovative and productive projects.

As manager for the Legacy Tree Program, I network with individuals and businesses that understand the importance of hardwoods and the reforestation mission and share in the goal of perpetuating the gift of giving back to the earth for future generations.

A professional in Hawaii's residential, commercial, and industrial real estate community, I bring a wealth of experience to Hawaiian Legacy Hardwoods, from property management, investment sales and acquisitions to consulting and leasing.

I received my education in the field of nursing. With that knowledge, I developed a hospital management billing company resulting in increased revenue and awareness of compliance for nurses, physicians, and billers.

Betsy Maler



# ▶ Leading Sustainability



## ▶ Evidence of Success

Since its inception in 2014, HLRI's grassroots initiative has engaged more than 400 organizations, over 5,000 volunteers and more than 100,000 individual donations to build the most successful endemic forest in Hawaii's history.

**Rebuilding endemic habitat is the most cost-effective means of achieving carbon neutrality, and the only way to do that is through actively managing the lands as our Hawaiian ancestors once did.**

HLRI has taken cultural practices of forest management and integrated the aid of advanced technology to gather new data points for a new understanding of how we can improve our resource management practices.

*"Sustainable Hawaiian forests is an opportunity for the State to foster a new, green, sustainable industry in the field of agriculture-production, food forests, and eco-asset creation which will rival the era of sugar and pine."*

## ▶ Recent Third Party Study Highlights

▶ Wildlife Study 2021	Recorded notable increase in Io, Pueo and Apapane bird counts Endemic species growth rates exceed prior study predictions 89%+ of all revenue is dedicated to fulfilling its mission.
▶ Forest Growth Audit 2020	
▶ Spire Financial Audit 2020	

# ▶ Legacy Vision

This initiative is necessary for the state of Hawaii as it provides organizations and the general community a means to plant trees and make an impact towards reforestation and revitalizing the ecosystem. Organizations can engage their employees and customers/visitors in the process to understand the cultural relevance and environmental impact of planting trees and regenerating the forest and taking care of our natural resources. Through the growth of this initiative, HLRI is creating new green jobs and revenue for the State of Hawaii while establishing an economically sustainable agricultural model to support private and public land owners. As HLRI implements reforestation through effective forestry management processes, we are also developing the infrastructure and production capability that will also produce value-added products to be used in Hawaii and exported outside of Hawaii further generating revenue and jobs and providing educational opportunities of historic cultural practices.

## ▶ Advancing Sustainability

▶ Advancing Agriculture & Education	<b>Integrated Data &amp; Benefits of Cultural Practices</b>
▶ Adding Significantly More Natural Resources	<b>More Food, Commodity Resources and Jobs</b>
▶ Carbon Neutrality	<b>New Eco-Assets to foster a Greener future</b>
▶ Agro-Forestry & Urban Forestry Solutions	<b>Food &amp; Forestry integrated into best practices for future land management</b>

## ▶ Workforce Development

▶ Community Engagement	<b>Sustainability Service Engagements</b>
▶ K - 12 Forestry Curriculum	<b>Hands on nursery and forestry programs</b>
▶ High Education Career Development	<b>Internship and Career Pathways</b>
▶ Sustainability Industry	<b>High Tech Jobs tied to the advancement of the environment and culture</b>

## ▶ Future Forestry

▶ Increase Hawaii's Forest Products and Resources	<b>More Made in Hawaii High Valued Local Resource</b>
▶ Future of Forest Management is uniquely Localized	<b>Growing Industry of Local Jobs for Local People</b>
▶ Advanced Materials and Product Development	<b>New and Unknown Industry</b>
▶ Cooperative, Self Sustaining Industry	<b>Industry Supports its Environment &amp; Hospitality</b>



## Community Engagement



Rotary Clubs of Hawaii have come together to fulfill a major goal towards sustainability by committing to plant more than 5,000 trees in 2021 and 5,000 in 2020. In a culmination of corporate support and volunteerism the Rotary Clubs of Hawaii have been able to engage in critical work which made the restoration of Hawaiian Legacys Forest at Gunstock Ranch a success story for Hawaii.

**Through corporate led volunteerism Hawaii have been able to reverse generations of degradation on previously fallowed sugar plantations lands.**



Decades of research and development at UH has culminated in an abundance of field research for the preservation of Hawaii's endemic species. Through a dynamic partnership with UH Manoa Professor Camilo Mora, PHD., Hawaiian Legacy was able to save some 10,000 trees by providing long term planting sites for the ongoing research and development of advancing the planting of Hawaii's rare forest. HLRI through its strict guidelines of forest management, is able to provide thorough data collection and reporting of unique planting scenarios Hawaiian Legacy is able to conduct.

**To advance the recovery of Hawaii's forest in a timeline equitable to meet the environmental needs of our community, we need to engage in cross functional partnerships designed to plant more trees and engage our people to be involved.**



Through Legacy tree plantings, HLRI has assisted HEI in achieving its organizations ESG goals. Providing turn key solutions for Hawaii utility providers is critical to how we meet our sustainability goals as a community. Hawaiian Legacy is able to provide certified turn key solutions for Hawaii's businesses. Through key partnerships HLRI is able to establish a standard for Going Green which provides a pathway for Hawaii to be a leader in sustainable solutions.

**Sustainable Carbon Offsets is a solution for Hawaii's industries. HEI is a perfect example of how Hawaii business can make sustainability a part of their business not just an option.**

## Making a Lasting Impression



Hawaii convention center has commitment to plant 1 million trees across all islands with Hawaiian Legacy. In many ways the Convention Center is the face of Hawaii and through their activity has demonstrated to our visitors and industry that today's businesses can do well while doing good.

**A platform of sustainability is a lasting message the convention center will showcase to attract new discerning customers to Hawaii's venue space.**



Highgate Hotels, Aohilani Resort is recognized as a leading industry in its initiatives to promote and provide lasting difference in its practices to support local at every opportunity possible. Having planted more than 10,000 trees in their 100,000+ commitment has helped Highgate Hotels to become a cornerstone for the hospitality industry in Hawaii. The future of Highgate Hotels will be fulfilling its environmental goals while providing unique experiences for our visitors. Providing authentic experiences is a primary component to achieving a new image for Hawaii's visitor industry.

**Having the Hospitality industry in support of the environmental success of Hawaii is a direct benefit to the beauty of our islands, our visitors and the industry at large. Giving our tourism industry new opportunities to explore Hawaii is what drives the right customers to Hawaii.**



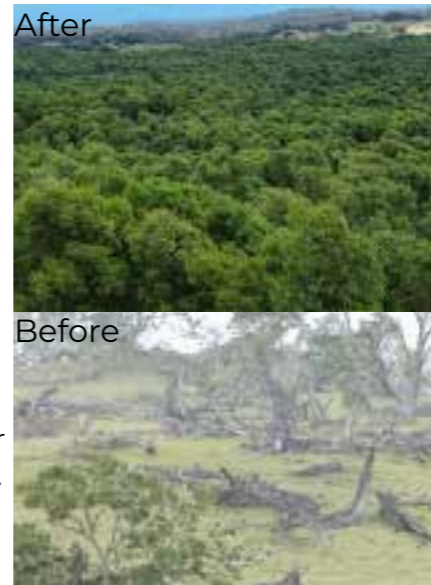
Hawaii Planing Mill has been a notable provider of forestry products for the local community for more than 100 years. As a leader in Hawaii's home builder industry HPM's multigeneration approach recognizes the importance of sustainability in its products, practices and its impact to the community. Through this dynamic partnership we are able to produce sustainable grown, carbon neutral, endemic materials which supports Hawaii's home builder industry.

**By incorporating sustainable local products into our home builder industries HLRI and HPM will be able to offer carbon neutral materials and products to make the future housing of Hawaii a sustainable activity while promoting the regeneration of our local forests.**

# ▶ Legacy Forest

## ▶ Forest at Kukaiau Ranch

The forest at Kukaiau lays along the ancient UmiKoa trail on the slopes of Maunakea. Hawaiian Legacy has taken 1,100 acres of denuded pasture lands and replaced it with a pristine endemic Hawaiian forest ecosystem. Our success at Kukaiau Ranch has enabled HLRI to expand into 2 more Legacy Forest location and provided new opportunities to plant 3 additional forests as well. The opportunity to replicate this successful model hinges on your support of this program. Hawaiian Legacy has been able to establish the highest honor among the Gold Standard in its Kukaiau Afforestation project being noted as the ideal carbon project for the Gold Standard to hold all other Afforestation projects against. After 10+ years of forest management and habitat restoration, Hawaiian Legacy has planted well over 500,000 endemic trees and sequestered more than 220,000 Tones of Carbon to date. Kukaiau is a corner stone for the future of Hawaii, where we will establish new endemic forests as a solution for landowners to meet their conservation demands and add to our natural resources.



**Kukaiau Forest is a opportunity to be a classroom for advancing Hawaii's forest resources on all islands.**

## ▶ Forest Gunstock Ranch ▶ Forest at Hapuna

HLRI has been able to successfully replicate its model at Kukaiau Ranch with an entirely different endemic species mix historically accurate to the North Shore of Oahu. The initial planting of 82 acres of what will be a 400 acres forest, is a private landowner partnership where we are able to provide corporate forest sponsorships to kickstart this exciting restoration work.

**Gunstock Ranch currently has more than 20,000 mixed endemic trees in the ground, providing a level of soil retention and soil moisture which has allow the area to rehabilitate. introducing hundreds of native bird back into the are.**

Through a visionary partnership between hospitality resort owner Hapuna Beach Resort and Maunakea Resort, the Hawaiian Legacy team has the honor of rebuilding the ancient Milo forest of the Hapuna Beach which once stood where the resort now stands. The dedication of what will be nearly 150 acres of their resort lands to meet new conservation demands, is the first ever in the United States.

**This program will offer the community and the out of State ownership a rooted connection to their role in stewardship. By evoking the kuleana of our partnerships we collectively bring about a new perspective of resource management and ho omaika i.**

# ▶ Hamakua Center for Sustainability



## ▶ Workforce Housing

Hamakua Center for Sustainability will provide the next generation with the tools necessary to enter into new sustainable businesses which support the environment and culture of Hawaii while providing opportunities to compete globally. This will be a campus focused on building new industry in sustainability where education and workforce development will be in continuous advancement.

**Advanced Work and Live space will allow an immersive environment to build Hawaii's next generation of land stewards and eco-preneur. Adding new workforce housing along the Hamakua Coast is a critical need in our community.**

## ▶ Product Development

Agricultural processing and product development with a focus on zero waste, zero carbon, Hawaiian made products. The Center for Sustainability will be the culmination of cutting edge technology and cultural practice building a new generation of stewardship. The advancement of technology and natural resources offers Hawaii the opportunity to build new forest products and high tech jobs around sustainability.

**Advancing Hawaii's local product development will bring new resources for our community resulting in more made in Hawaii goods and uniquely sustainable products representing carbon neutrality in Hawaii's future.**

## ▶ Education / Training

Building up a new industry around sustainability and natural resources needs a place based educational space amidst the cutting edge of industry. Having an advanced learning space is critical to bringing Hawaii's next generation into taking on the future development of Hawaiian Legacy's program.

**Science and manufacturing blending into a working space designed to integrate workshops and continued education for advancing workforce training.**



## Haleiwa Center for Sustainability



### ► Eco Tourism

The growth of sustainable tourism is happening world wide, not just in Hawaii, and not just for tourists. Since ecotour operations began, HLRI has found that more than 50% of all of Hawaiian Legacy eco-tours are provided to locals. Recognized as a leader in ecotourism, HLRI, in partnership with a large private landowner, has recognized the opportunity to provide a tourism component that supports our growing farms and provides new, localized experiences around Hawaii food, and agriculture.

**Supporting the Haleiwa project, will allow us, for the first time, to include a food forest component within our Legacy Forest. HLRI can capture the growing demand to the agriculture and farm based tourism while rebuilding the delicate ecosystems around Haleiwa's independent farmers.**

### ► Food Sustainability

There is a natural synergy between agriculture and forestry and HLRI can provide a backbone of support for the independent farmers which can mitigate the environmental cost of food production. Through its corporate sponsorships, Hawaiian Legacy has an opportunity to expand its impact into agroforestry models while supporting Hawaii's local farmers and food production.

**Food sustainability has been recognized locally as a critical component of a healthy community. Building the forestry component to expand on successful agro-forestry models has proven to be success around the globe.**

### ► Education / Training

SPARC (Sectoral Partnerships for Advancing Resilient Cross-Cutting) for Hawaii, is a new cooperation of like minded organizations who have helped to develop new programs for implementing curriculum, training and workforce development to advance the sustainability industry beyond the existing footprint. In cooperation with Kamehameha Schools, PICHTR, Lanakila Pacific, Hawaii Unified, and Hawaiian Legacy; SPARC, represents future career training preparing to support a recent EDA grant submission to promote a new sustainable industry in Hawaii.

**SPARC is an opportunity for Hawaii to build into its career path new and advanced careers in future industry driven through sustainability, forestry and the advancement of Hawaii's natural resources.**

## Legacy Forest

### ► Forest at Maulua

In a drive to extend the Hamakua Coast Watershed Conservation, Hawaiian Legacy has dedicated itself to preserving more than 2,000 acres. This partnership between private landowners and Hawaiian Legacy is an opportunity to activate these vital conservation zones into productive forest resources functioning as protected and properly managed native species habitat areas.

**The opportunity to extend HLRI's effort in the Hamakua Coastal Preservation zone is a critical watershed and habitat restoration effort. The project will add more than 1 million endemic trees back into the environment and add 2,000 acres into conservation.**

### ► Forest at Kapaa Kauai

We are partnering with a local land owner, to establish the Kauai Kapaa Legacy Forest. This Forest will provide opportunities to fulfill the existing demands HLRI has to involve Kauai businesses to support this local forest through the sponsorship of Legacy Trees. The project on Kauai will encompass more than 500 acres and offer unique species only found on Kauai.

**Kapaa will represent the first Hawaiian Legacy's forest on the island of Kauai. This project will incorporate carbon neutral tree planting experiences with various modes of carbon neutral transportation including helicopter, ATV, horseback or hiking.**

### ► Forest at Maui

After years of communication between hospitality partners and private landowners, the opportunity to support a Legacy Forest on Maui is becoming near term.

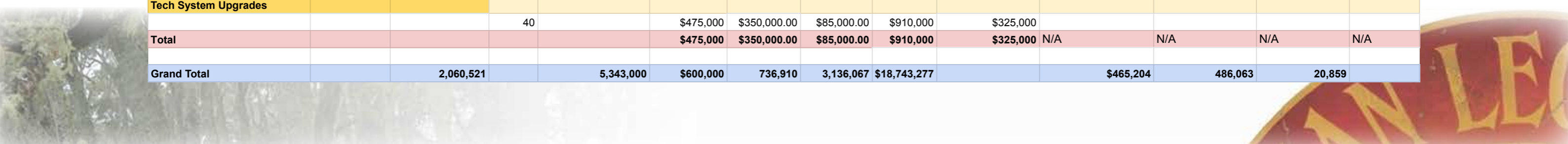
**Maui has been a frequent request of our sponsors and donors, and through the support of our collective partnership HLRI is finally taking that next step in planning a new Legacy Forest on Maui. Stay tuned...**

# Our Kuleana

*"Hawaiian Legacy will continue to replenish a lost asset of Hawaii through the painstaking process of building a forest, one tree at a time."*

# Budget Breakdown

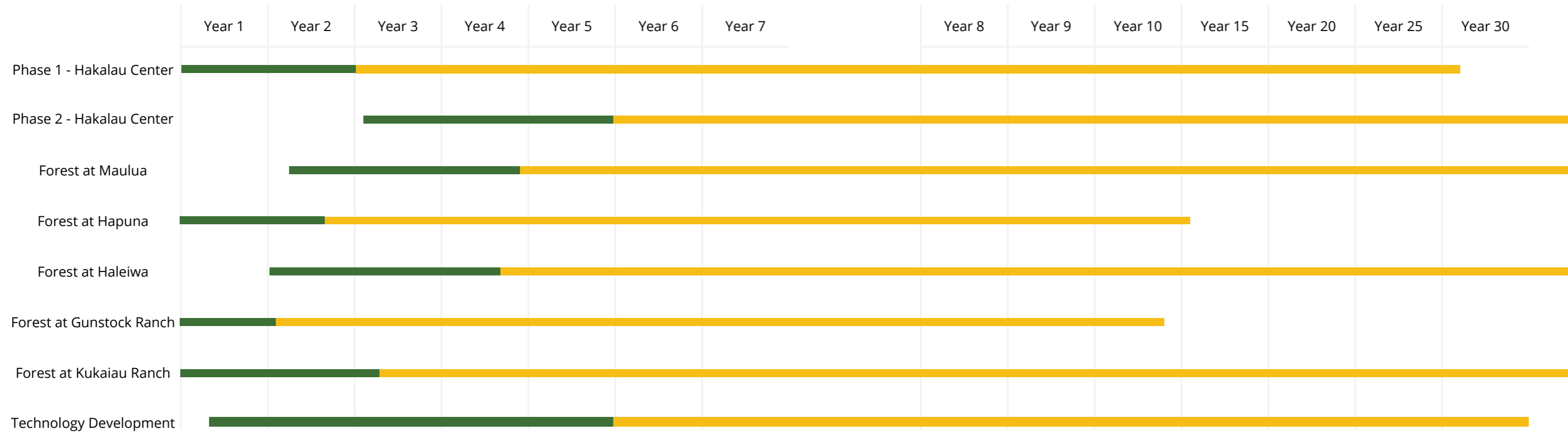
Asset	Trees Planted	Proposed Planting	Term/Yrs	Land/ Infrastructure	Construction	Maintenance	Equipment	ASK	Investment To Date	Monthly Debt Service	Monthly Revenue	Monthly Net Gain	Annual ROI
<b>Hakalau Point Phase I</b>													
Center for Sustainability	2022/2023		40	\$2,118,500	\$550,000	\$185,000		\$2,853,500	\$807,500	\$11,054	\$7,500	-\$3,554	
Harvest/Milling Equipment	2022/2023		40			\$57,520	\$2,876,267	\$2,933,787	\$125,000	11,365	\$10,000	-\$1,365	
<b>Total</b>				<b>\$2,118,500</b>	<b>\$550,000</b>	<b>\$242,520</b>	<b>\$2,876,267</b>	<b>\$5,787,287</b>	<b>\$932,500</b>	<b>\$22,419</b>	<b>\$17,500</b>	*	
Month Rental Ecotech Nursery Systems LLC = 2,500/month. Hamakua Mill Co. = \$5,000 • HLRI owns 113,000 trees of which 20% will be thinned at a bottom value of \$750 per whole Koa tree, which is extremely conservative Hamakua Mill Equipment Lease = \$10,000/month HLRI owns the timber value of 113,501 trees, 22,650 (19.9%) of which is scheduled to be thinned (for the health of the forest) over the next eight years, conservative value													
<b>Hakalau Point Phase II</b>													
Land	2025		40	\$1,312,500		\$119,200		\$1,431,600	\$0	\$5,545		-\$5,545	
Workforce Housing	2024		40	\$800,000		\$200,000	\$0	\$1,000,000	\$0	\$3,873	\$10,500	6,627	
<b>Total</b>				<b>\$800,000</b>	<b>\$0</b>	<b>\$200,000</b>	<b>\$0</b>	<b>\$2,431,600</b>	<b>\$0</b>	<b>\$9,418</b>	<b>\$10,500</b>	<b>\$1,082</b>	<b>11%</b>
<b>10 Units @ 480 sf ea.</b>	<b>\$1050 Rental Rate</b>												
<b>Legacy Forest at Kukaiau</b>													
Land	533,558	800,337	40	\$2,200,000			\$0	\$2,200,000	\$23,023,260	\$8,522	\$9,879	1,357	
Workforce Housing			40	\$400,000	\$75,000	\$25,000	\$0	\$500,000	\$0	\$1,936	\$2,700	1,829	
<b>Total</b>				<b>\$2,600,000</b>	<b>\$75,000</b>	<b>\$25,000</b>	<b>\$0</b>	<b>\$2,700,000</b>	<b>\$23,023,260</b>	<b>\$10,458</b>	<b>\$12,579</b>	<b>\$3,186</b>	<b>33%</b>
<b>5 Units @ 480 sf ea.</b>	Four Seasons \$299,712/yr. (Plus land is leased to HLH for \$118,000 annual lease payment) (trees already planted, thus, no labor cost / Land contains more than 10,000 bf in dead-standing old-growth koa)												
<b>\$950 Rental Rate</b>													
<b>Gunstock Ranch</b>													
Field Operations	23566	29934	10	\$165,000		\$49,390	\$135,000	\$349,390	\$1,620,333	\$41,460	\$100,235	58,775	141%
<b>Total</b>				<b>\$165,000</b>	<b>\$0</b>	<b>\$49,390.00</b>	<b>\$135,000.00</b>	<b>\$349,390</b>	<b>\$1,620,333</b>	<b>\$41,460</b>	<b>\$100,235</b>	<b>\$58,775</b>	<b>141%</b>
for planting 30,000 Legacy Trees to fulfill Kahala Resort commitment Revs: = \$119,544/year (less HLRI costs of \$16,434 for planting 2,988 trees/yr)													
<b>Haleiwa</b>													
Field Operations	0	65,050	40	250,000	\$175,000	\$225,000.00	\$125,000.00	\$775,000	\$15,000	\$3,875	\$24,394	\$20,519	529.52%
<b>Total</b>				<b>250,000</b>	<b>\$175,000</b>	<b>\$225,000.00</b>	<b>\$125,000.00</b>	<b>\$775,000</b>	<b>\$15,000</b>	<b>\$3,875</b>	<b>\$24,394</b>	<b>\$20,519</b>	<b>\$5</b>
<b>Hapuna</b>													
Field Operations	150	97800	25	125,000	\$675,000	\$225,000.00	\$125,000.00	\$1,150,000	\$45,000	\$5,750	\$22,922	\$17,172	298.64%
<b>Total</b>				<b>125,000</b>	<b>\$675,000</b>	<b>\$225,000.00</b>	<b>\$125,000.00</b>	<b>\$1,150,000</b>	<b>\$45,000</b>	<b>\$5,750</b>	<b>\$22,922</b>	<b>\$17,172</b>	<b>\$3</b>
<b>Maulua</b>													
50% ownership 2100 Acre	0	878400	40	3,500,000	\$250,000	\$150,000.00	\$125,000.00	\$4,025,000	\$15,000	\$20,125	\$3,294,000	\$3,273,875	16267.70%
<b>Total</b>				<b>3,500,000</b>	<b>\$250,000</b>	<b>\$150,000.00</b>	<b>\$125,000.00</b>	<b>\$4,025,000</b>	<b>\$15,000</b>	<b>\$20,125</b>	<b>\$3,294,000</b>	<b>\$3,273,875</b>	<b>\$163</b>
Joint venture with 50% landowner to plant and manage 100% of the acres in endemic forest.													
<b>Legacy Forest at Kauai Kapaa</b>													
Field Operations	0	189,000	10	75,000	\$190,000	\$225,000.00	\$125,000.00	\$615,000	\$12,500	\$3,075	\$47,245	\$44,170	1436.42%
<b>Total</b>				<b>75,000</b>	<b>\$190,000</b>	<b>\$225,000.00</b>	<b>\$125,000.00</b>	<b>\$615,000</b>	<b>\$12,500</b>	<b>\$3,075</b>	<b>\$47,245</b>	<b>\$44,170</b>	<b>\$14</b>
<b>Tech System Upgrades</b>													
			40		\$475,000	\$350,000.00	\$85,000.00	\$910,000	\$325,000				
<b>Total</b>					<b>\$475,000</b>	<b>\$350,000.00</b>	<b>\$85,000.00</b>	<b>\$910,000</b>	<b>\$325,000</b>	N/A	N/A	N/A	N/A
<b>Grand Total</b>		<b>2,060,521</b>		<b>5,343,000</b>	<b>\$600,000</b>	<b>736,910</b>	<b>3,136,067</b>	<b>\$18,743,277</b>		<b>\$465,204</b>	<b>486,063</b>	<b>20,859</b>	



# Project Timeline

█ Fund Deployment  
█ Program Benefit

## Project Timeline Continued



► **Phase 1 - Hakalau Center for Sustainability** Hakalau Centers initial action will be the acquisition and construction of its agricultural processing facility to support HLRI's current mission to provide sustainable forest products. This first phase will incorporate the first stage of infrastructure and begin to engage the community in Hakalau within its operations. This will which will pave the way for advanced technical training, education, development and countless community resources.

► **Forest at Maulua** Maulua Ranch represents a new partnership where HLRI will activate 2,200 acres of unmanaged lands back into productive and protected forest. This activity will reflect in more than 16 new jobs in this rural community and hundred if not thousands of corporately sponsored trees in the ground.

► **Forest at Hapuna** Hapuna Resort is a critical habitat restoration project which is driven by the hotel and resort residence whom are supporting the planting of what will be more than 150 acres of new forest on the protected Hapuna coastline. This activity will engage 3 new employees.

► **Forest at Haleiwa** Haleiwa represents a critical region of Hawaii's food production which is in desperate need of supporting programs that can promote sustainability and incorporate the benefits of Agro-Forestry into the future of our food supply chain. In the creation of this project HLRI will hire an additional 4 employees.

► **Phase 2 - Hakalau Center for Sustainability** Hakalau Center secondary action will do to support the advancement of a centralized headquarters to drive all other initiatives forward. This phase of the project will focus on workforce housing-jobs training, partnerships and a community volunteerism. This facility will engage between 5 - 10 new employees

► **Forest at Gunstock Ranch** The development of Gunstock Ranch is a critical environmental need for the Malaikahana Ahupuaa. This planting represents a habitat restoration project which incorporate replanting among some of the most degraded soil and moisture content we have seen anywhere in Hawaii.

► **Forest at Kukaiau Ranch** The completion of outplanting the Kukaiau Ranch is putting back a forest which has been lost for more than 100 years. This effort is a part of restoring the Hamakua Watershed and the rehabilitation of rare habitats that are sorely needed for Hawaii's rare birds. The completion of this project will provide an additional 2 jobs in addition to the 7 existing full time employees.

► **Technology Stack** The technology stack is an essential infrastructure that will provide the foundation for future data collection in forest management for generations to come. The technology is a critical component of how we advance the industry of forest development and management to meet the future educational need of our community. In developing the technology stack there will be an additional 2 full time high tech jobs to support the on going development.



# Legacy Forest Plan

## Blueprint for Going **Green** 2022

Hawaiian Legacy Reforestation Initiative  
PO Box 22435 Honolulu HI 96823 / [legacytrees.org](http://legacytrees.org)



April 5, 2022

The Honorable Sylvia Luke, Chair  
The Honorable Kyle T. Yamashita, Vice Chair  
Members of the House Committee on Finance  
31st Hawaii State Legislature, Regular Session 2022  
State of Hawaii

Measure Title: RELATING TO SPECIAL PURPOSE REVENUE BONDS TO ASSIST THE HAWAIIAN LEGACY REFORESTATION INITIATIVE TO RESTORE HAWAII'S FORESTS AND NATURAL RESOURCES.

Description: Authorizes the Department of Budget and Finance to issue special purpose revenue bonds to assist Hawaiian Legacy Reforestation Initiative, LLC in its mission to proliferate a sustainable model of endemic reforestation, ecosystem revitalization, endangered species recovery, and carbon credit sequestering. Effective 7/12050. (SD1)


Chair Sylvia Luke, Vice Chair Kyle T. Yamashita, and Members of the House Committee on Finance, I submit the following testimony in support of Senate Bill SB 2070 SD1 regarding Hawaiian Legacy Reforestation Initiative LLC.

I look forward to the success of Hawaiian Legacy Lumber and Hamakua Mill forest industry, that would provide diversity and strengthen the economy of Hawai'i.

Hawaiian Legacy Hardwoods committed years of hard work towards growing native Hawaiian trees that sequestered carbon and added to the biodiversity of the area. Thinning the forest improves the growth condition and contributes to sturdier, quality trees. Forest specialists say that thinning also ensures the carbon sequestration for dozens to hundreds of years. My commitment is to offer full support towards SB 2070 SD1.

The importance that Hawaiian Legacy Lumber and Hamakua Mill will bring to the State of Hawai'i will be increased and new employment opportunities to help generate a more diverse workforce. I support SB 2070 SD1.

Sincerely,



Betsy Maler

March 11, 2022

The Honorable Sylvia Luke, Chair  
The Honorable Kyle T. Yamashita, Vice Chair  
Members of the House Committee on Finance  
31st Hawaii State Legislature, Regular Session 2022  
State of Hawaii

Measure Title: RELATING TO SPECIAL PURPOSE REVENUE BONDS TO ASSIST THE HAWAIIAN LEGACY REFORESTATION INITIATIVE TO RESTORE HAWAII'S FORESTS AND NATURAL RESOURCES.

Description: Authorizes the Department of Budget and Finance to issue special purpose revenue bonds to assist Hawaiian Legacy Reforestation Initiative, LLC in its mission to proliferate a sustainable model of endemic reforestation, ecosystem revitalization, endangered species recovery, and carbon credit sequestering. Effective 7/12050. (SD1)

Chair Sylvia Luke, Vice Chair Kyle T. Yamashita, and Members of the House Committee on Finance, I submit the following testimony in support of Senate Bill SB 2070 SD1 regarding Hawaiian Legacy Reforestation Initiative LLC.

As a retired Hawaii State Senator, I had a distinguished political career- including being a member of staff of the U.S. Senator John F. Kennedy. During my time as Senator, I helped create the Medical and Law Schools at the University of Hawaii and its West Oahu campus, the Shoreline Management Act, and the Hawaii State Plan for economic, physical, and social development policies. I look forward to the success of Hawaiian Legacy Lumber and Hamakua Mill forest industry, that would provide diversity and strengthen the economy of Hawai'i.

Hawaiian Legacy Hardwoods committed years of hard work towards growing native Hawaiian trees that sequestered carbon and added to the biodiversity of the area. Thinning the forest improves the growth condition and contributes to sturdier, quality trees. Forest specialists say that thinning also ensures the carbon sequestration for dozens to hundreds of years. My commitment is to offer full support towards SB 2070 SD1.

The importance that Hawaiian Legacy Lumber and Hamakua Mill will bring to the State of Hawai'i will be increased and new employment opportunities to help generate a more diverse workforce. I support SB 2070 SD1.

Sincerely,

Francis Wong



April 3, 2022

The Honorable Sylvia Luke, Chair  
The Honorable Kyle T. Yamashita, Vice Chair  
Members of the House Committee on Finance  
31st Hawaii State Legislature, Regular Session 2022  
State of Hawaii

SB2070 SD1

Measure Title: RELATING TO SPECIAL PURPOSE REVENUE BONDS TO ASSIST THE HAWAIIAN LEGACY REFORESTATION INITIATIVE TO RESTORE HAWAII'S FORESTS AND NATURAL RESOURCES.

Chair Sylvia Luke, Vice Chair Kyle T. Yamashita, and Members of the House Committee on Finance, I submit the following testimony in support of Senate Bill SB 2070 SD1 regarding Hawaiian Legacy Reforestation Initiative LLC.

On behalf of myself, Robert Cundiff, I would like to present you with written testimony in strong support of SB2070 SD1, relating to special purpose revenue bonds to assist Hawaiian Legacy Reforestation Initiative to restore Hawaii's forests and natural resources.

SB2070 SD1 authorizes the issuance of special purpose revenue bonds to assist Hawaiian Legacy Reforestation Initiative LLC (HLRI) in the mission to generate a sustainable model of endemic reforestation, ecosystem revitalization, endangered species recovery and carbon credit sequestering with planning, designing, constructing, and equipping facilities for the manufacturing, processing, and distribution of products such as but not limited to the production of value-added agricultural, advanced materials, sustainable, and fine art products.

This initiative is necessary for the state of Hawaii as it provides organizations and the general community a means to plant trees and make an impact towards reforestation and revitalizing the ecosystem. Organizations can engage their employees and customers/visitors in the process to understand the cultural relevance and environmental impact of planting trees and regenerating the forest and taking care of our natural resources. Through the growth of this initiative, HLRI is creating new green jobs and revenue for the State of Hawaii while establishing an economically sustainable agricultural model to support private and public landowners. As HLRI implements reforestation through effective forestry management processes, HLRI is also developing the infrastructure and production capability that will also produce value-added products to be used in Hawaii and exported outside of Hawaii further generating revenue and jobs and providing educational opportunities of historic cultural practices.

Further, HLRI has proven success over the past 12 years in planting over 500,000 endemic trees and effectively managing thriving Hawaiian forests on Oahu and the island of Hawai'i. The innovative forestry management practices have produced healthy forests that have grown quicker and larger than established industry averages. Through

these innovative and reliable practices and within the family of companies, the organization has been awarded for the 8th consecutive year with the “B Corp Best of The World” Honoree from B Lab and is the only forestry organization in Hawai’i carbon-credit certified by the Gold Standard out of Switzerland. HLRI is recognized for doing good in the community and for a sustainable system of reforestation. HLRI has the credentials and is looking to expand a proven model in current locations and to other major islands to provide reforestation projects, green jobs and economic opportunity across all agriculture communities.

I am confident that Hawaiian Legacy Reforestation Initiative LLC has the ability to consolidate, present, and expand on Hawaii products. The need for future industry development and a stronger platform for Hawaii based industries is critical to the success of the organization and a diversified Hawaii economy. Hawaiian Legacy Reforestation is working collectively to chaperone a greater future for Hawaii’s agriculture industry.

I have personally witnessed the intense cultural and emotional significance as HLRI partner organizations have planted their trees and engaged with programs of reforestation. The power of this initiative is not only a solid economic sustainable project, but also culturally necessary to connect current generations to cultural practices and the value of taking care of the land through reforestation and ecosystem revitalization. I have learned that HLRI personnel are passionate in their mission and the most experienced and qualified to successfully execute a sustainable model of reforestation and land management that will benefit Hawaii tremendously.

For the reasons stated above, I am in strong support of SB2070 SD1 and urge you to pass this bill and provide HLRI with the resources needed to grow and expand on the extraordinary work they are doing on behalf of the people of Hawaii. Thank you for the opportunity to provide this testimony and for your support of SB2070 SD1.

Respectfully,

A handwritten signature in black ink, appearing to read "Robert Cundiff". The signature is stylized and cursive.

Robert Cundiff

March 11, 2022

The Honorable Sylvia Luke, Chair  
The Honorable Kyle T. Yamashita, Vice Chair  
Members of the House Committee on Finance  
31st Hawaii State Legislature, Regular Session 2022  
State of Hawaii

Measure Title: RELATING TO SPECIAL PURPOSE REVENUE BONDS TO ASSIST THE HAWAIIAN LEGACY REFORESTATION INITIATIVE TO RESTORE HAWAII'S FORESTS AND NATURAL RESOURCES.

Description: Authorizes the Department of Budget and Finance to issue special purpose revenue bonds to assist Hawaiian Legacy Reforestation Initiative, LLC in its mission to proliferate a sustainable model of endemic reforestation, ecosystem revitalization, endangered species recovery, and carbon credit sequestering. Effective 7/12050. (SD1)

Chair Sylvia Luke, Vice Chair Kyle T. Yamashita, and Members of the House Committee on Finance, I submit the following testimony in support of Senate Bill SB 2070 SD1 regarding Hawaiian Legacy Reforestation Initiative LLC.

During my more than 30 years with HSBC Bank Canada, I held a variety of executive management positions working with the bank's domestic and international sectors in the areas of Risk Management and Governance, Compliance, and Corporate Sustainability. I am an experienced director with extensive audit, risk, and governance expertise. I am currently a director of one of Canada's largest credit unions, Coast Capital Savings Federal Credit Union. As well, I am currently Audit Committee Chair for Infrastructure BC, a provincial crown corporation and procurement advisor for major infrastructure projects in BC.

I look forward to the success of Hawaiian Legacy Lumber and Hamakua Mill forest industry, that would provide diversity and strengthen the economy of Hawai'i.

Hawaiian Legacy Hardwoods committed years of hard work towards growing native Hawaiian trees that sequestered carbon and added to the biodiversity of the area. Thinning the forest improves the growth condition and contributes to sturdier, quality trees. Forest specialists say that thinning also ensures the carbon sequestration for dozens to hundreds of years. My commitment is to offer full support towards SB 2070 SD1.

The importance that Hawaiian Legacy Lumber and Hamakua Mill will bring to the State of Hawai'i will be increased and new employment opportunities to help generate a more diverse workforce. I support SB 2070 SD1.

Sincerely,

  
Susan Dujmovic