

REGISTERED ARCHITECT

Hawai'i (Registration No. _____), 1973

PROFESSIONAL AFFILIATIONS

American Institute of Architects (AIA), Corporate Member
Office of Environmental Quality Control, Council Member
Urban Land Institute, Member
The Construction Specifications Institute, Professional Member

EDUCATION

University of Hawai'i at Mānoa, Masters in Business Administration, _____ (candidate)
University of Southern California, Bachelor of Architecture, _____

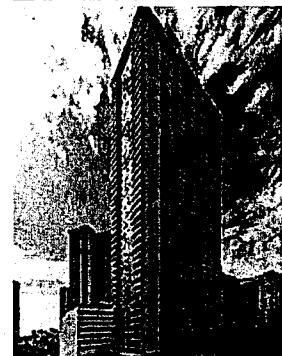
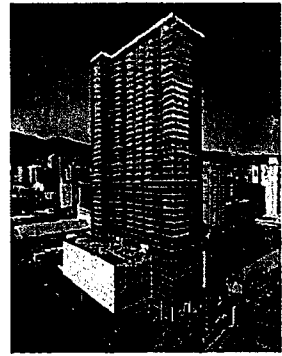
Chaminade College
St. Louis High School

SPECIALIZED TRAINING

LEED Accredited Professional, 2009
Sustainable Design Tools, Integrating High Performance Training Session
Army Corps Construction Quality Management CHPS (Collaborative for High Performance Schools) Training Session
Harvard GSD – Judicial Facilities Division
Harvard GSD – Assisted Living Facilities Design

COMMUNITY INVOLVEMENT

St Louis High School Scholarship Foundation, Contributor
Hokua at 1288 Ala Moana, Board of Directors, Chairman of Building and Grounds, 2018-ongoing
Kapiolani Residence, Board of Directors, President, 2018-2020
Kapiolani Residence, Commercial Director, 2021



Vernon Inoshita

AIA, LEED AP
Founding Partner & President

RELEVANT PROJECTS

The Park on Keeaumoku,
Honolulu, O'ahu, Hawai'i

KCR Development
Honolulu, O'ahu, Hawai'i

Sky Ala Moana,
Honolulu, O'ahu, Hawai'i

Kapi'olani Residence
Honolulu, O'ahu, Hawai'i

Azure Ala Moana
Honolulu, O'ahu, Hawai'i

The Central Ala Moana
Honolulu, O'ahu, Hawai'i

Waihonua at Kewalo
Honolulu, O'ahu, Hawai'i



Vernon Inoshita is a founding Principal & President of Design Partners Incorporated and is responsible for the management of the firm, parlaying it into the number one Architectural Firm for 2018 and 2019, PBN. Mr. Inoshita also serves as Lead Designer and Principal in Charge of the firm's largest and most complex projects. His experience spans the entire spectrum of design, from high-rise luxury condominiums, resort and hospitality, multi-family affordable housing, to airport improvements and educational facilities.

Since the inception of the Transit Oriented Development of Honolulu, Mr. Inoshita has been at the forefront of this urban growth, forging the community connections that are enabling the healthy growth of Kaka'ako, Mayor Wright and the Kapi'olani Corridor. Current projects include the award winning Kapi'olani Residence, Azure Ala Moana, Sky Ala Moana, The Park on Keeaumoku, The Central Ala Moana, and Waihonua at Kewalo.

His work with DPP include standard building permit processing but more impressively securing TOD Special Design Permits for four mixed use projects that allowed additional density and heights. Working with DPP, two of the projects required changes proposed by Vernon amending the Ala Moana Master Plan which was then successfully implemented.

Prior to his career at Design Partners Incorporated, he served as a senior designer for a number of firms on the mainland as well as in Hawai'i. On the mainland, Vernon was a designer with Minoru Yamasaki, working on the World Trade Center in New York and the Century Center Towers in Los Angeles.