



Economic and Community Pathway to Recovery

Office of the Governor - State of Hawai'i

APRIL 24, 2020



Our guiding principles



Health and safety first



Work in a collaborative, inclusive, and transparent manner



Respect and incorporate Hawai'i's values, unique sense of place, and way of life

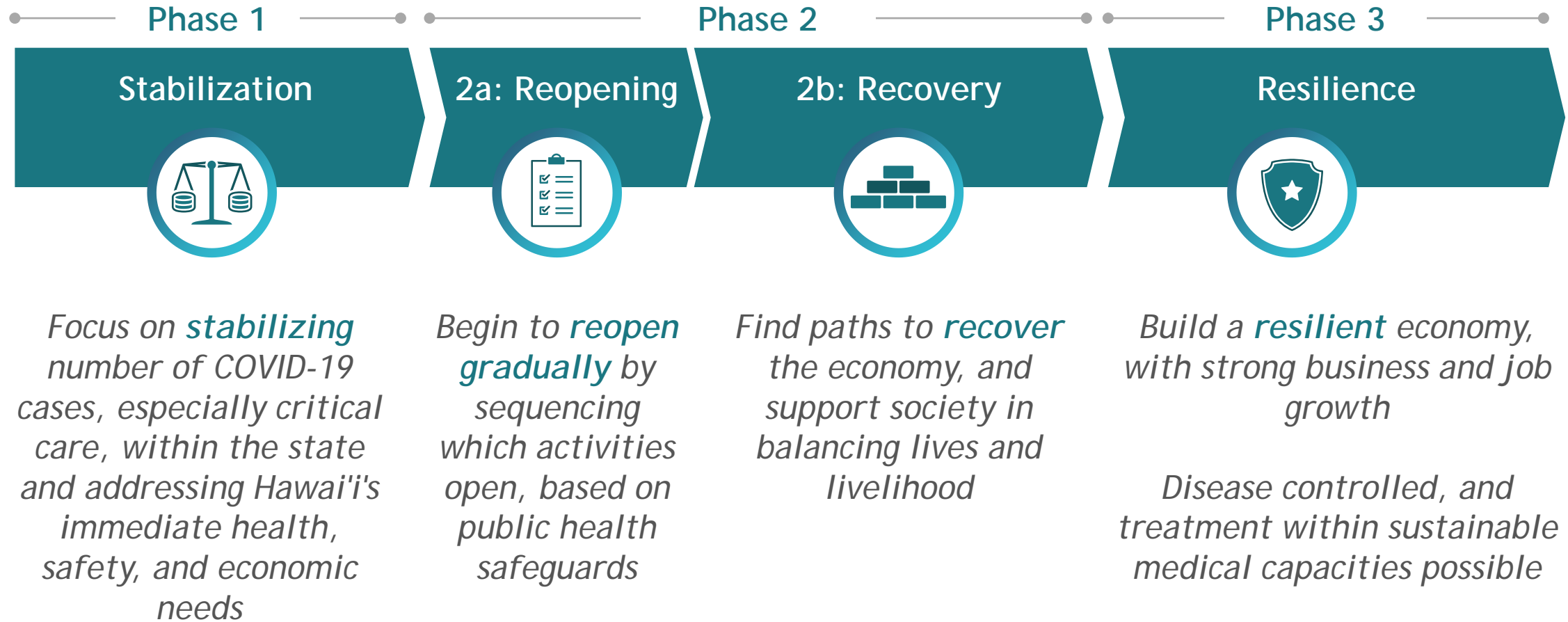


Six principles will inform decision-making and process throughout each phase

- Have **clear priorities** and **goals** for each phase
- Engage stakeholders and **ensure transparency**
- Use **fact-based decision-making**
- Leverage national and global **best practices**
- Consider federal, state, local and private **funding sources**
- Focus on the **need for speed**

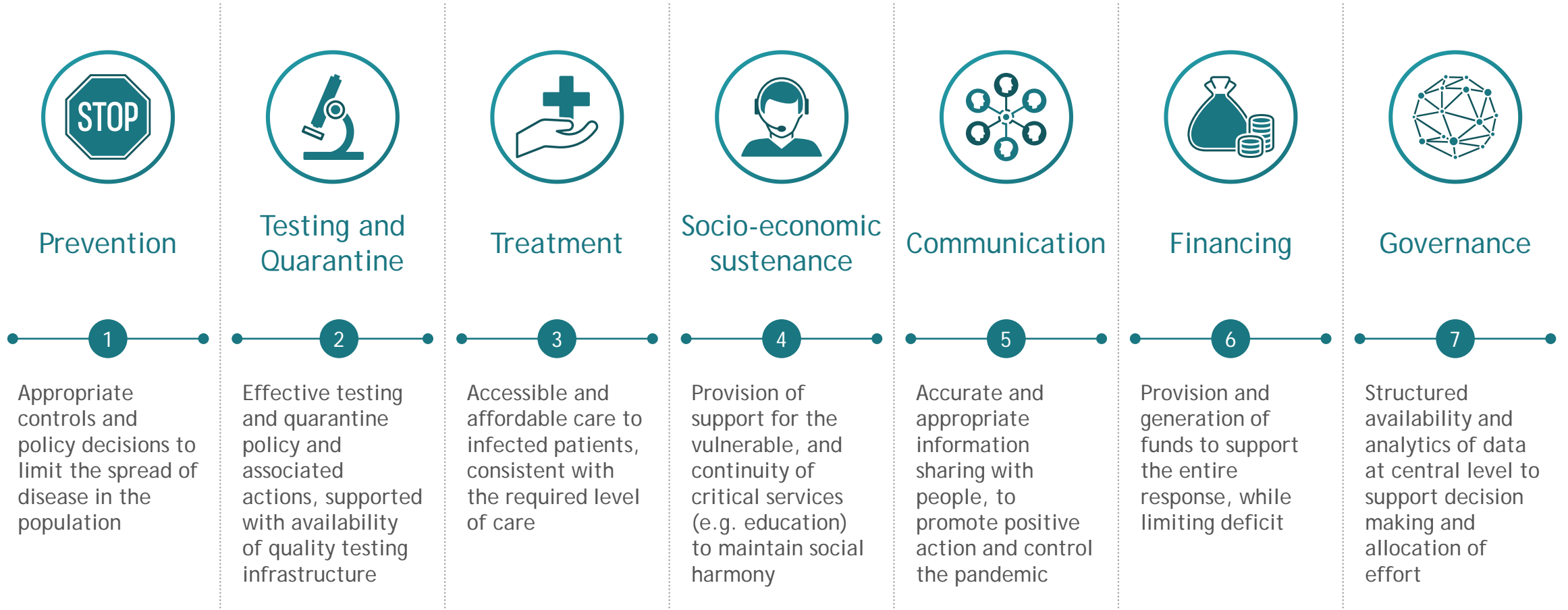


High Level Plan to re-open the Hawaii economy





Goal of stabilization is to limit spread of COVID-19 and address immediate needs of the people of Hawai'i





Phase 1: Stabilization

State policy priorities

Maintain low infection rate

Ensure availability of food

Ensure adequate shelter

Preserve and build health system capacity

Keep the economy alive



1 Public policy measures to support priorities

- Governor emergency proclamations
- In-shelter and quarantine measures
- Travel restrictions
- Social distancing
- Moratorium on evictions
- Access to telehealth
- Develop re-entry plan and schedule

2 Resource allocation to support priorities, e.g.,

- Availability of testing and medical supplies
- Unemployment assistance
- Food assistance
- Health insurance assistance
- Reopening plan and readiness
- Coordination and timing of Federal funding



Phase 2a: Reopening gradually in phases

State policy priorities

Mitigate virus resurgence

Re-open the economy

Re-enter the workforce

Support local businesses and nonprofits

Return to school

Open phased-in travel



1 Public policy measures to support priorities

- Reopening plan and policies
- Modified travel restrictions
- Required testing, tracing and quarantine
- Modified in-shelter orders
- Modified social distancing
- Incentives for re-opening and recovery

2 Resource allocation to support priorities, e.g.,

- Screening, testing, tracing and quarantine
- Points of entry: Airport and harbors
- Points of entry: Businesses, workplaces, and schools
- Nonprofit, safety net assistance
- Business technical assistance
- Crisis counseling



Hawaii needs to consider 6 key factors across both healthcare and public/economic to ensure we develop a safe and effective reopening plan

Healthcare readiness

Public/economic readiness

Disease conditions

Control of virus impact in terms of case growth and disease impact (e.g., high risk populations)



Leading indicator that measures are effective, public health is protected

Healthcare capacity

Adequate supply of hospital supplies, trained workers, treatment spaces



Capacity sufficient to care for COVID-19 and other health needs

Virus monitoring system

Virus testing relative to new case volume, serological testing, and contact tracing



Testing to inform decisions, resource allocation, and outbreak resolution

Business preparation

Workplace health protocols and business readiness



Businesses ensure workplace safety for those returning to work

Public response

Training and availability of hygiene products and PPE; high compliance rates



Public educated and empowered to adhere to guidelines, play role in containment

Government preparation

Federal framework for public health, sectors, and global politics



Clear guidance, expectations, and legal protection for system actors

Public and economic readiness to be informed by input from public health experts



Phase 2b: Recovery

State policy priorities

Increase access to disease treatments

Continue phased-in travel

Support full return of workforce

Reshape the economy



1 Public policy measures to support priorities

- Build new capabilities for the people of Hawai'i
- Continued support of vulnerable and ALICE individuals and households,
- Protect workers, helping SMEs and support distressed sectors
- Develop scenarios for long-term growth
- Encourage private sector and investor engagement

2 Resource allocation to support priorities, e.g.,

- Continued unemployment, rent/mortgage, and health insurance assistance
- Support individual and business liquidity
- New skills training
- Coordination and timing of Federal funding



Phase 3: Resilience

State policy priorities

Develop resilient outbreak control and emergency response mechanisms

Help workforce adapt and ensure security of essentials

Stabilize and stimulate the economy

Find opportunities for innovation



1 Public policy measures to support priorities

- Identify and support new opportunities for innovation
- Redesign underlying economic priorities and focus at the State and Local levels
- Invest in education and other drivers of innovation
- Push towards Hawaii'i 2050 goals

2 Resource allocation to support priorities, e.g.,

- Innovation grants
- Employee retraining
- Support for new ways of working
- Etc.



Next steps

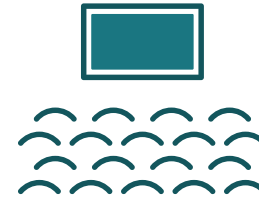
- 1 Allocation of CARES Act Funding, consistent with Stabilization and Reopening goals and priorities
- 2 Stakeholder engagement and input
- 3 Reopening Plan: public health and economic recovery



We will engage with stakeholders



Sector-specific workshops



Virtual "town hall" meetings



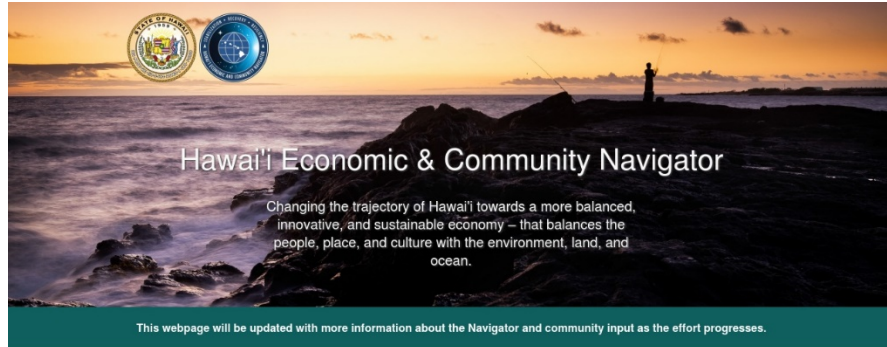
Solicitation of written input



Community and business surveys



Learn more at: RecoveryNavigator.hawaii.gov



COVID-19 has had a severe and unprecedented impact on the state economy and community

Hotels, shopping malls, airlines, restaurants, retailers, service professionals, nonprofits, and a wide variety of Hawaiian businesses have significantly reduced or shut down operations.

As of April 3, 2020, the Hawaii Department of Labor and Industrial Relations received over 180,000 initial unemployment applications statewide due to the economic damages, losses and impact of COVID-19. To address the economic and community impact of COVID-19 and coordinate recovery efforts, Governor David Ige issued a Proclamation on April 8, 2020 to establish a Hawaii Economic & Community Navigator to coordinate, direct, and implement a statewide economic and community recovery and resiliency plan.

The Plan shall consist of three components which shall run concurrently:

Phase I: Stabilization

Identify and address critical economic and community impacts, including the allocation of CARES, State and local funding to mitigate the collapse of key economic sectors. Also, provide direct economic relief to individuals to avoid homelessness, hunger and sickness.

Phase II: Recovery

Identify and support economic and community development activities which provide recovery, job growth and capital investment in the economy. Chart a course of careful re-entry into the workforce, balancing the needs of public health and economic recovery.

Phase III: Resiliency

Re-evaluate and restructure Hawaii's economy to meet the new normal and desired future for Hawaii. Identify and invest in systemic changes in the economy and society which furthers economic diversification, environmental preservation, sustainability and Hawaii's values and way of life.

Sign Up for Email updates

Subscribe to receive news and updates on our progress

Email Address Industry (optional)

First Name Last Name


Organization (optional) Job Title (optional)


Are you a (check all that apply):

Individual Business Owner Community Group Member Public Sector Employee

Give us input

We want to hear your input about economic and community recovery efforts. If you have comments on the recovery process, please submit them to:

 input@recoverynavigator.hawaii.gov



© 2020 State of Hawaii

