

COVID-19 CARES Funds Sub Committee

House Select Committee on COVID-19 Economic and Financial Preparedness

September 28, 2020

Today's Update

- Update on CRF funds
- Consolidated reports
- What's next

From Last month: Synopsis – Drill down, isolate concern

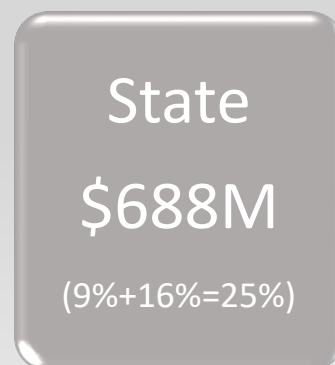
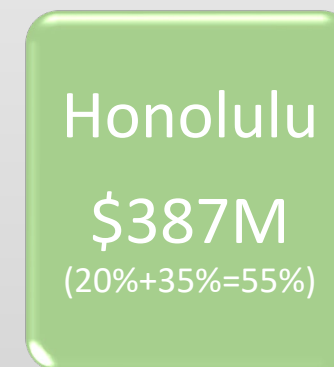
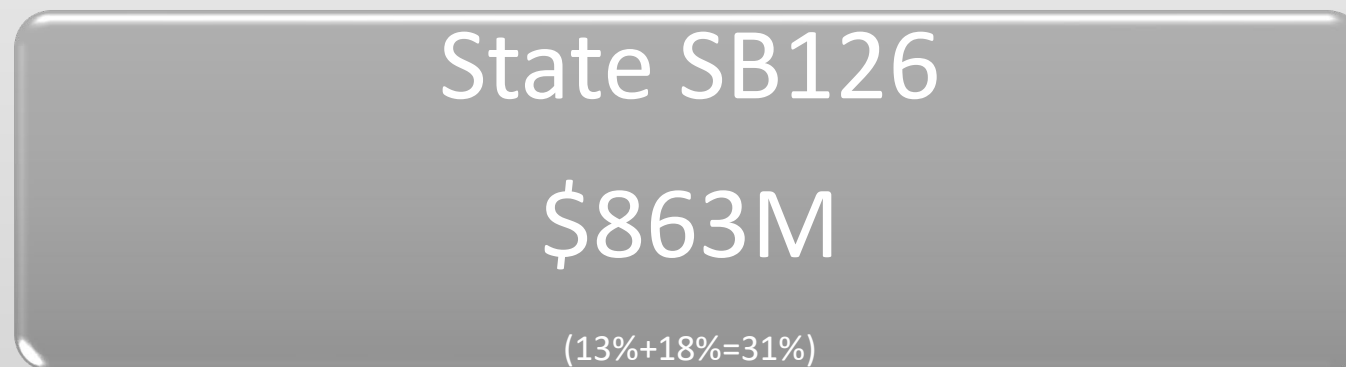
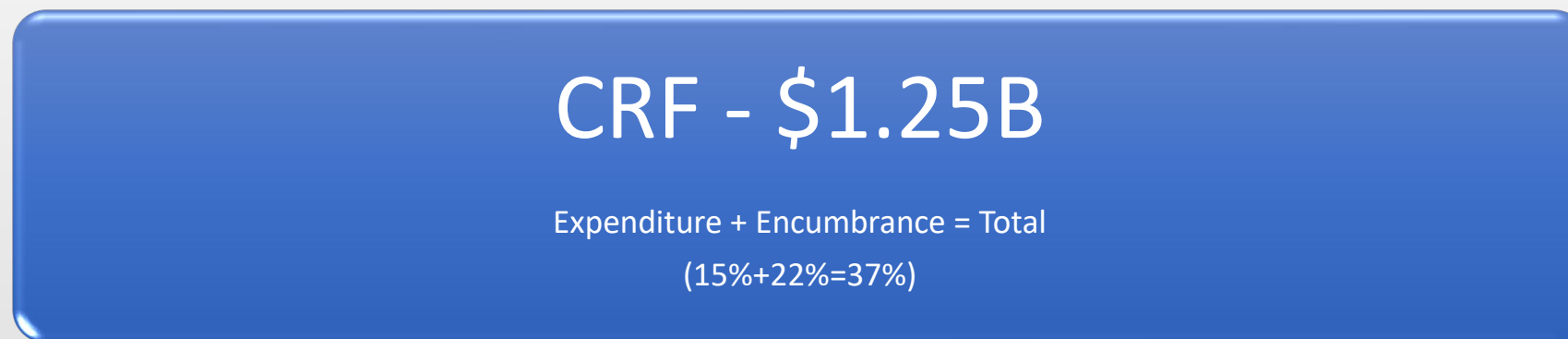
	<u>Award Amount</u>	<u>Expenditure</u>	
Total	\$9,026,487,509	\$6,896,994,191	76.41%
SBA, IRS, UI, SNAP, etc (>75% spent)	\$6,772,123,659	\$6,756,124,124	99.76%
	\$2,254,363,850	\$140,870,068	6.25%
non-CRF COVID (avail 4-5/20)	\$1,004,363,850	\$61,685,729	6.14%
CRF (approved by Gov 7/30)	\$1,250,000,000	\$79,184,339	6.33%

Non-CRF COVID was received and ready for spending primarily in April/May of 2020 thru various dates.

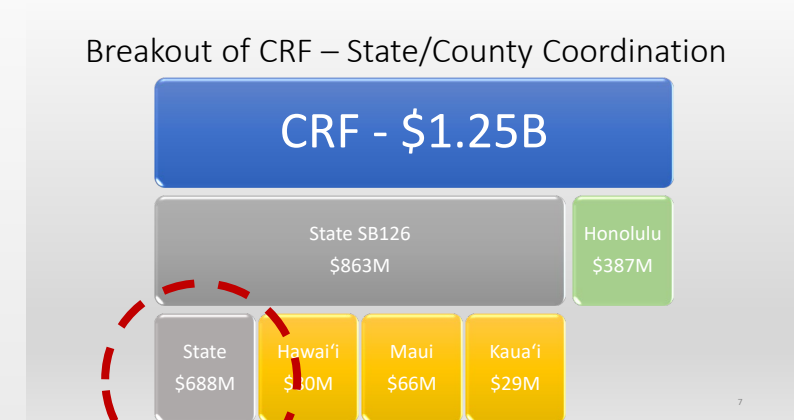
CRF is within the scope of this committee and was received in May 2020 and approved by Governor end of July, to be spent by 12/31/2020.

As of 8/31:
\$186M or 15%

Breakout of CRF – State/County Coordination



Update on State allocations



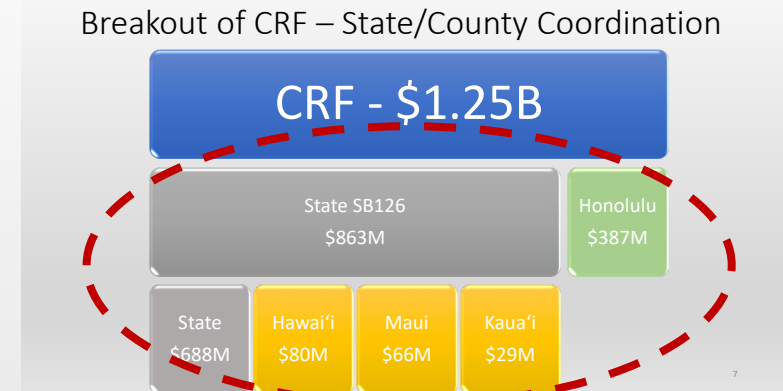
- Allocated funds: B&F got all contracts approved and signed
 - Funds to stakeholders less clear
- Unallocated funds: execution risk
 - \$321M in line-item veto pool, restriction released 9/15.
 - \$185M proposed allocations.
- Coordination of funds
 - with non CRF funds is hard to understand
 - with counties, jurisdiction between state and counties are being clarified

Pace of certain **Non CRF COVID** (out of committee scope, but relevant)

Updated 8/31/2020

<u>PROGRAM</u> 7/31/2020	<u>AWARD</u>	<u>EXPENDITURE</u>	<u>ENCUMBERED</u>
CDC Epidemiology & Lab Capacity	62,444,228	282,172	3,859,902
CDC Rapid Funding	6,317,500	1,750,429	1,479,104
Education (K-12, Higher ed)	96,990,529	10,423,218	14,985,801
Emergency Solutions Grants (DHS, City & County)	34,835,055	?	?
Childcare & Development Block Grant	11,990,147	139,370	0
Headstart	2,530,000	0	0
Public Housing Operating Funds	4,128,858	413,411	0
Community Health Centers	14,680,713	0	0

Coordination with Counties



- 9/21 – Met again with County representatives and discussed potential areas of overlap, confusion which Robert Yu (B&F) is clarifying.
- Top areas of county funding are small business support, housing, food, public health (testing, isolation, etc)
- State or city kuleana?
 - Schools
 - COVID Testing
 - Airport preparation
- Reporting
 - Classifications (small business, public health, testing, food, etc)
 - What's an 'expenditure?'
 - Beyond \$ spent: Program output/impacts

Portion of Total Funds from Coronavirus Relief Fund:

\$1,250,000,000

All CRF funds have a 12/31/2020 liquidation deadline, after which unexpended funds will be relinquished.
The remaining balance refers to the total allocated amount minus expenditures and encumbrances.

Expended/Disbursed: \$186,101,453

Encumbered: \$279,110,613

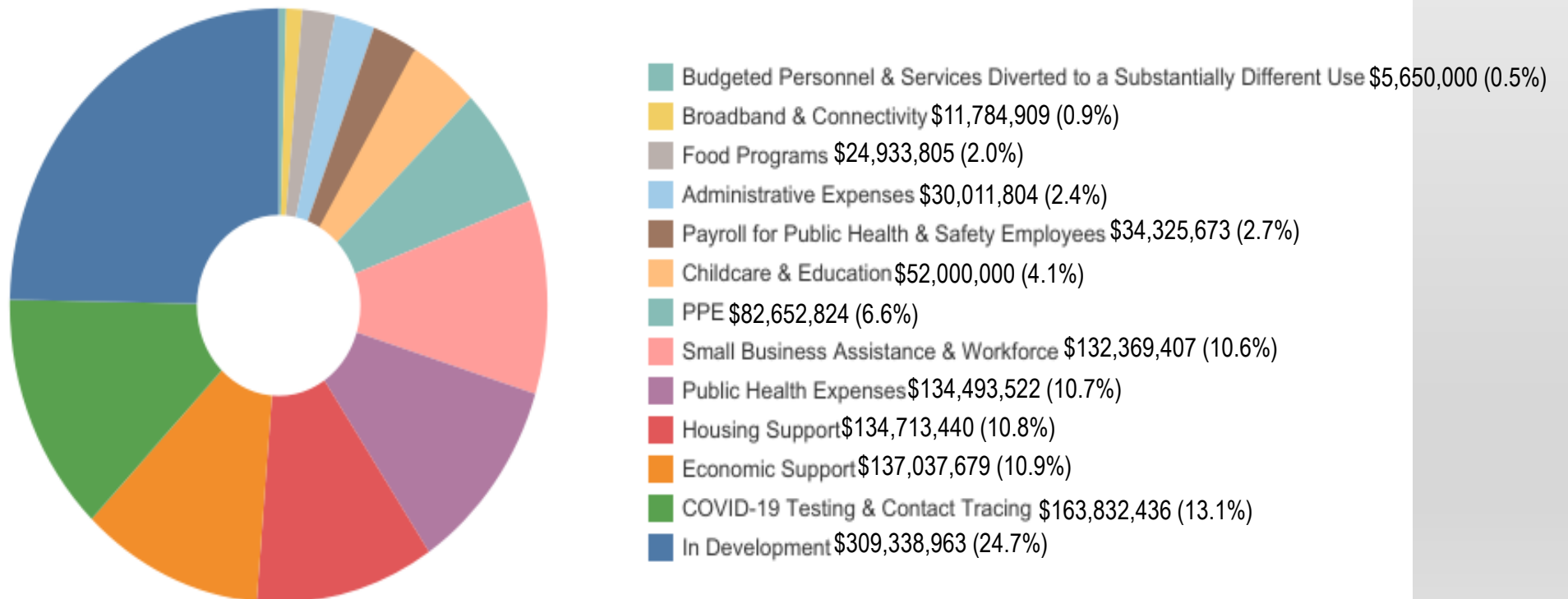
Remaining Balance: \$784,787,934

Percent expended/encumbered:



Hawaii Coronavirus Relief Fund Breakdown by Category

Hover over category segments to see state and county awards and percentage of total funds



To view individual projects by category, click [here](#). Note that projects w/an * are part of recent spend down allocations

Current
State CRF
Allocations

Award Name	Allocated	Percentage Expended/Encumbered
Coronavirus Relief Fund-housing relief & resiliency program	100,000,000.00	49.64%
Coronavirus Relief Fund-childcare facility subsidy	15,000,000.00	0.00%
Coronavirus Relief Fund-PPE purchase & distribution	61,000,000.00	56.56%
Coronavirus Relief Fund-airport screening & health security	70,000,000.00	37.13%
Coronavirus Relief Fund-retraining & workforce	10,000,000.00	0.00%
Coronavirus Relief Fund-innovation grants to create supply chain of cleaning supplies & ppe	10,000,000.00	0.00%
Coronavirus Relief Fund-food distribution	5,000,000.00	0.00%
Coronavirus Relief Fund-fishing industry & support	3,000,000.00	6.67%
Coronavirus Relief Fund-support for 2020 graduates of public high schools	1,000,000.00	0.00%
Governor CRF Discretionary Fund (Original Award: \$39,986,000): Remaining Available Balance	8,036,000.00	0.00%
Governor CRF Discretionary Fund: DOE Distance Learning	31,000,000.00	100.00%
Governor CRF Discretionary Fund: DOA Farmer Assistance	950,000.00	0.00%
Coronavirus Relief Fund-coronavirus response	40,000,000.00	46.23%
Coronavirus Relief Fund-pandemic unemployment assistance program	1,360,000.00	57.81%
Coronavirus Relief Fund-information technology systems (fed'l compliance)	8,154,000.00	0.00%
Coronavirus Relief Fund-information technology systems (fed'l compliance)	2,000,000.00	79.98%
Coronavirus Relief Fund- Hawaii County	80,009,671.00	32.75%
Coronavirus Relief Fund- Maui County	66,598,757.00	67.97%
Coronavirus Relief Fund-Kauai County	28,715,551.00	64.53%
Coronavirus Relief Fund- City & County of Honolulu	387,176,021.00	55.02%
Coronavirus Relief Fund-Undetermined	135,884,767.00	0.00%

Hawaii has received \$1.25B in Coronavirus Relief Funds (CRF) through the federal CARES Act that must be completely expended by December 31, 2020. The table below reflects current allocation, transfer of funds (revenue), expenditures and encumbrances.

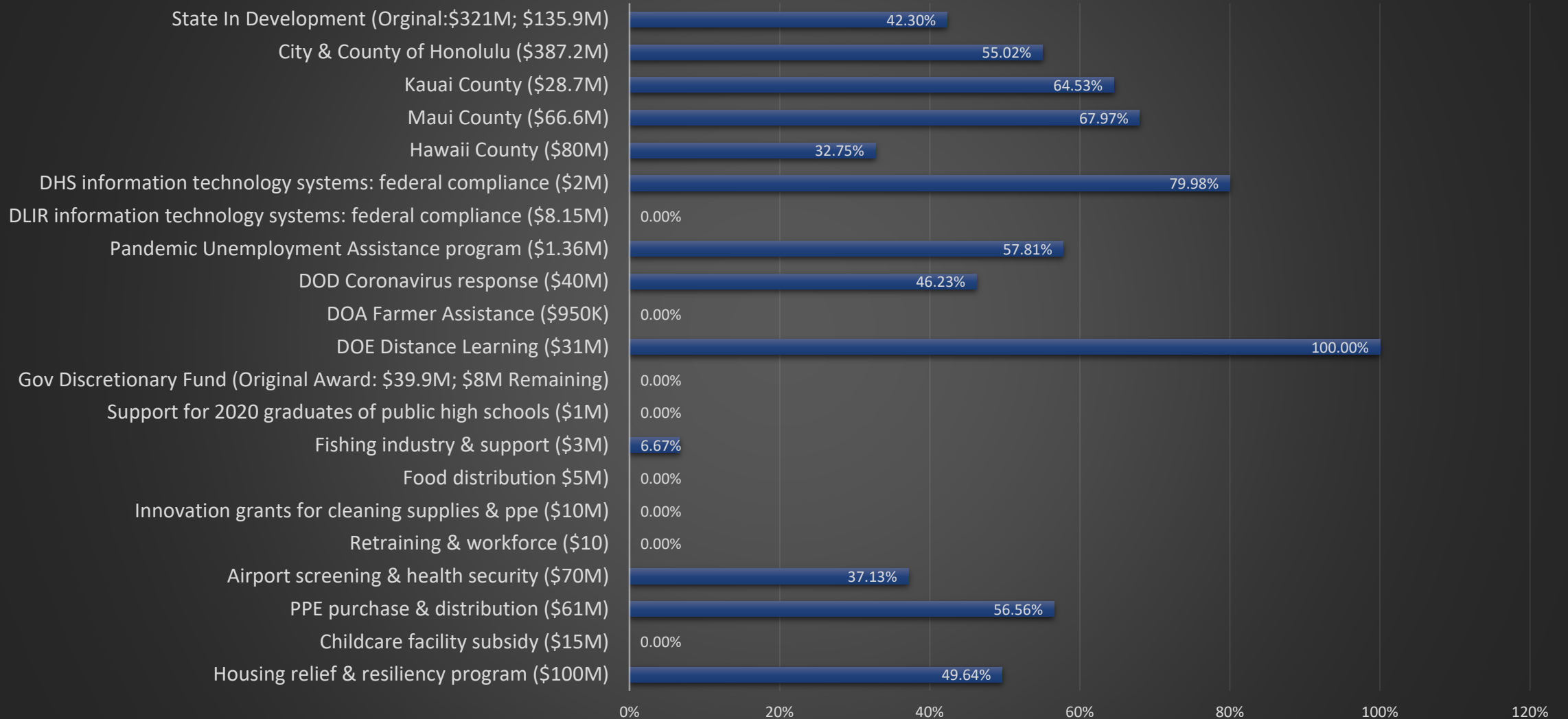
Remaining Available Balance: \$776,751,934

	Allocated	Revenue (drawdown)	Expended and/or Disbursed	Encumbrance (Balance)	Transfer to Counties	Transfer to Agencies	Remaining Available Balance
CRF-Undetermined	\$321.00M						\$321.00M
CRF-airport screening & health security	\$70.00M	\$70.00M	\$6.26M	\$19.73M		\$70.00M	\$44.01M
CRF-PPE purchase & distribution	\$61.00M	\$61.00M		\$34.50M		\$61.00M	\$26.50M
CRF-housing relief & resiliency program	\$100.00M	\$100.00M	\$20.05M	\$29.59M		\$100.00M	\$50.36M
CRF-coronavirus response	\$40.00M	\$40.00M	\$2.07M	\$16.42M		\$40.00M	\$21.51M
CRF-childcare facility subsidy	\$15.00M	\$15.00M				\$15.00M	\$15.00M
CRF-information technology systems (fed'l compliance)	\$10.15M	\$2.00M	\$1.60M			\$2.00M	\$8.55M
CRF-innovation grants to create supply chain of cleaning supplies & ppe	\$10.00M	\$10.00M					\$10.00M
CRF-retraining & workforce	\$10.00M	\$10.00M					\$10.00M
CRF-food distribution	\$5.00M	\$5.00M				\$5.00M	\$5.00M
CRF-fishing industry & support	\$3.00M	\$3.00M	\$0.20M				\$2.80M
CRF-pandemic unemployment assistance program	\$1.36M	\$1.36M	\$0.79M			\$1.36M	\$0.57M
CRF-support for 2020 graduates of public high schools	\$1.00M	\$1.00M					\$1.00M
CRF-City & County of Honolulu	\$387.18M	\$387.18M	\$76.27M	\$136.74M			\$174.16M
CRF-Hawaii County	\$80.01M	\$80.01M	\$26.20M		\$80.01M		\$53.81M
CRF-Kauai County	\$28.72M	\$28.72M	\$13.06M	\$5.47M	\$28.72M		\$10.19M
CRF-Maui County	\$66.60M	\$66.60M	\$8.61M	\$36.65M	\$66.60M		\$21.33M
Governor CRF Discretionary Fund (Original Award: \$39,986,000): Remaining	\$8.04M	\$8.04M				\$31.95M	
Governor CRF Discretionary Fund: DOA Farmer Assistance	\$0.95M	\$0.95M					\$0.95M
Governor CRF Discretionary Fund: DOE Distance Learning	\$31.00M	\$31.00M	\$31.00M				\$0.00M
Totals:	\$1,250.0M	\$920.8M	\$186.1M	\$279.1M	\$175.3M	\$326.3M	\$776.8M

Additional
Spend Down
Plan Allocations
\$185.1M

Award Name	Allocated	Percentage Expended/ Encumbered
Salaries and software changes to enhance responses to SNAP recipients and to respond to COVID-19*	4,650,000.00	0.00%
Isolation & Quarantine Sites: Kauai, Maui & Hawaii *	17,780,575.00	0.00%
Surge Capacity: RNs & Therapists*	14,000,000.00	0.00%
Contact Tracing*	4,212,750.00	0.00%
Testing Kits, Equipment & Logistics*	35,000,000.00	0.00%
Reimbursement of Eligible DOH Expenses Paid to Date*	13,000,000.00	0.00%
Hawaii Health Systems: health & safety supplies, beds, medical equipment*	891,908.00	0.00%
Swab Testing Kits*	1,900,000.00	0.00%
Physicians & Nurses: 10 FTE nurses; 1 FTE physician*	2,000,000.00	0.00%
Isolation Negative Air Pressure Rooms & Cells*	3,000,000.00	0.00%
Disinfect PSD Facilities*	1,200,000.00	0.00%
Quarantine Containers: OCCC (2 ea); WCCC (1); WCF (1)*	750,000.00	0.00%
University of Hawaii: Cleaning & Facial Protection; Distance Learning Software; Student Housing Physical Augmentation; Health & Safety Supplies*	20,130,000.00	0.00%
Restaurant Cash Card Program: Private-Public partnership to provide financial support to unemployment claimants*	66,600,000.00	0.00%

Current CRF Allocations-Percentage Expended/Encumbered



What's next?

- Continued understanding, coordination opportunity between nonCRF COVID (state), CRF state and CRF county
- Beyond spend down and coordination of \$, would like to understand what 'success' looks like in a year

In addition to our current COVID19 dashboards, economic indicators.....

CDC COVID-19 Response Health Equity Strategy: Accelerating Progress Towards Reducing COVID-19 Disparities and Achieving Health Equity

July 2020

Populations and Place-Based Focus

- Racial and ethnic minority populations
- People living in rural or frontier areas
- People experiencing homelessness
- Essential and frontline workers
- People with disabilities
- People with substance use disorders
- People who are justice-involved (incarcerated persons)
- Non-U.S.-born persons

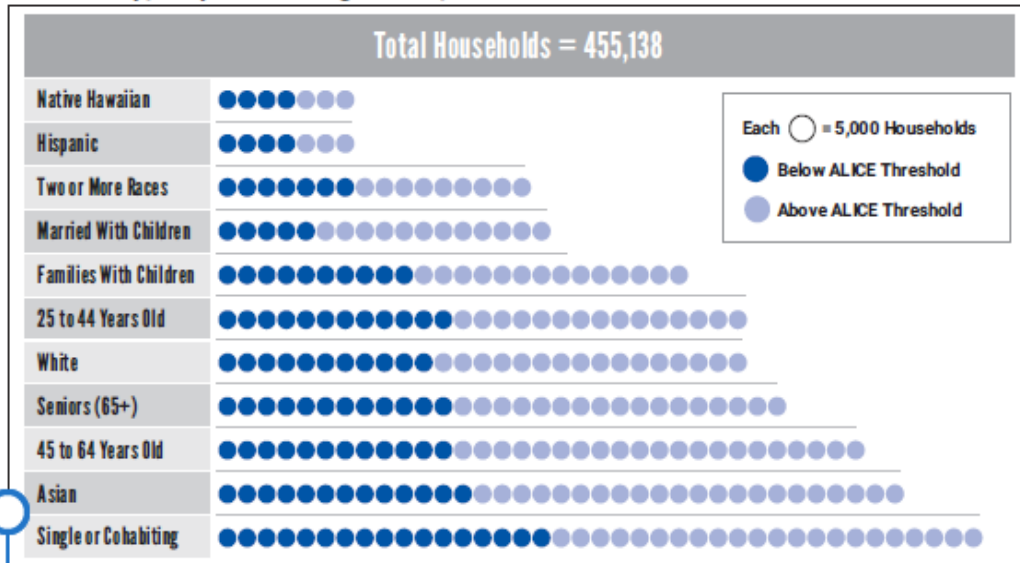
Intended Outcomes

- Reduced COVID-19-related health disparities.
- Increased testing, contact tracing, isolation options, and preventive care and disease management in populations at increased risk for COVID-19.
- Ensured equity in nationwide distribution and administration of future COVID-19 vaccines.
- Implemented evidence-based policies, systems, and environmental strategies to mitigate social and health inequities related to COVID-19.
- Reduced COVID-19-associated stigma and implicit bias.
- Expanded cultural responsiveness and application of health equity principles among an increasingly diverse COVID-19 responder workforce.

WHAT'S THE IMPACT TO ALICE FAMILIES, including the 'NEW' ALICE

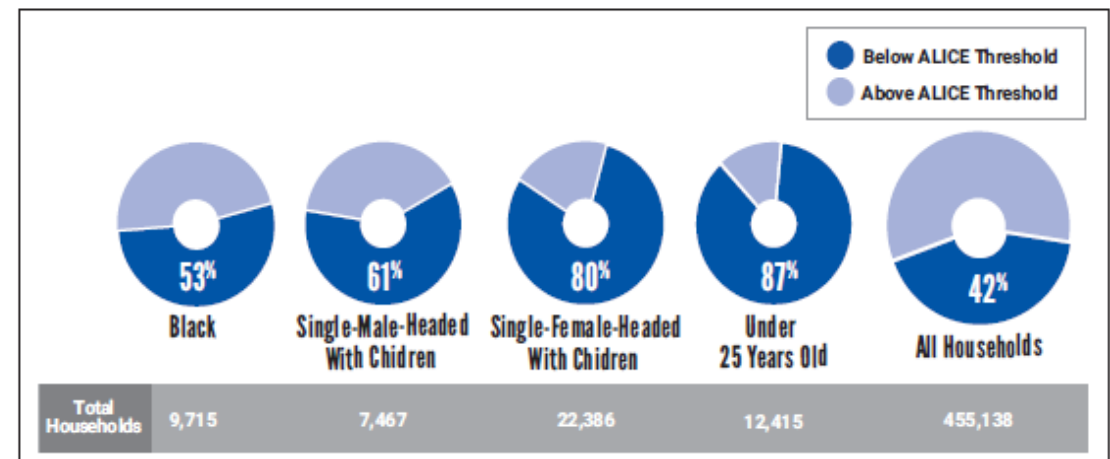


Figure 2. Household Types by Income, Largest Groups, Hawai'i, 2018



Note: Categories shown in figure are overlapping.
 Sources: ALICE Threshold, 2018; American Community Survey, 2018

Figure 3. Select Household Groups by Income, Hawai'i, 2018



Sources: ALICE Threshold, 2018; American Community Survey, 2018