

Application Submittal Checklist

The following items are required for submittal of the grant application. Please verify and check off that the items have been included in the application packet.

- 1) Certificate of Good Standing (If the Applicant is an Organization)
- 2) Declaration Statement
- 3) Verify that grant shall be used for a public purpose
- 4) Background and Summary
- 5) Service Summary and Outcomes
- 6) Budget
 - a) Budget request by source of funds ([Link](#))
 - b) Personnel salaries and wages ([Link](#))
 - c) Equipment and motor vehicles ([Link](#))
 - d) Capital project details ([Link](#))
 - e) Government contracts, grants, and grants in aid ([Link](#))
- 7) Experience and Capability
- 8) Personnel: Project Organization and Staffing



AUTHORIZED SIGNATURE

GALE BRACEROS, EXECUTIVE DIR.

PRINT NAME AND TITLE

1/20/22

DATE

**THE THIRTIETH LEGISLATURE
APPLICATION FOR GRANTS
CHAPTER 42F, HAWAII REVISED STATUTES**

Type of Grant Request:

Operating Capital

Legal Name of Requesting Organization or Individual: Db a:
Weed and Seed Hawai'i, Inc.

Amount of State Funds Requested: \$ 350,000.00

Brief Description of Request (Please attach word document to back of page if extra space is needed):
The Weed and Seed Hawai'i Project will use a comprehensive approach to reduce and prevent crime and improve residents' overall quality of life. The funds will be used to cover costs for staffing, trainings, and activities in designated communities with a history of high levels of crime, drug use, gangs, and severe economic deterioration. What sets our Project apart from others is our partnership with law enforcement and the Prosecutor's office. We will service low to moderate income residents with emphasis on reaching out to the most vulnerable populations - senior citizens, homeless, special needs population, English Second Language families and the youth.

Amount of Other Funds Available:
State: \$ 49,990.00 (DOH contract)
Federal: \$ 0
County: \$ 0
Private/Other: \$ 42,000.00 (HCF)

Total amount of State Grants Received in the Past 5 Fiscal Years:
\$ 325,000.00 (GIA FY2018)
Unrestricted Assets:
\$ 9,336.65

New Service (Presently Does Not Exist): Existing Service (Presently in Operation):

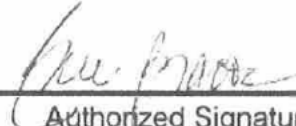
Type of Business Entity:
 501(C)(3) Non Profit Corporation
 Other Non Profit
 Other

Mailing Address:
91-884 Ft Weaver Rd Suite A
City: Ewa Beach State: HI Zip: 96706

Contact Person for Matters Involving this Application

Name: Gale Braceros Title: Executive Director
Email: galeb@weedandseedhi.org Phone: 808-376-7005 or 808-232-6437

Federal Tax ID#: [Redacted] State Tax ID#: [Redacted]


Authorized Signature

Gale Braceros, Executive Director
Name and Title

01/20/2022
Date Signed



**STATE OF HAWAII
STATE PROCUREMENT OFFICE**

CERTIFICATE OF VENDOR COMPLIANCE

This document presents the compliance status of the vendor identified below on the issue date with respect to certificates required from the Hawaii Department of Taxation (DOTAX), the Internal Revenue Service, the Hawaii Department of Labor and Industrial Relations (DLIR), and the Hawaii Department of Commerce and Consumer Affairs

Vendor Name: WEED & SEED HAWAII, INC.

Issue Date: 01/13/2022

Status: Compliant

Hawaii Tax#: 15881946-88
 New Hawaii Tax#: GE-1598294688-01
 FEIN/SSN#: XX-XXX0982
 UI#: XXXXXX5735
 DCCA FILE#: 240563

Status of Compliance for this Vendor on Issue date:

Form	Department(s)	Status
A-6	Hawaii Department of Taxation	Compliant
8821	Internal Revenue Service	Compliant
COGS	Hawaii Department of Commerce & Consumer Affairs	Compliant
LIR27	Hawaii Department of Labor & Industrial Relations	Compliant

Status Legend:

Status	Description
Exempt	The entity is exempt from this requirement
Compliant	The entity is compliant with this requirement or the entity is in agreement with agency and actively working towards compliance
Pending	A status determination has not yet been made
Submitted	The entity has applied for the certificate but it is awaiting approval
Not Compliant	The entity is not in compliance with the requirement and should contact the issuing agency for more information

Application for Grants

If any item is not applicable to the request, the applicant should enter "not applicable".

I. Certification – Please attach immediately after cover page

1. Certificate of Good Standing (If the Applicant is an Organization)

If the applicant is an organization, the applicant shall submit one (1) copy of a certificate of good standing from the Director of Commerce and Consumer Affairs that is dated no earlier than December 1, 2021.

See Application Page 3.

2. Declaration Statement

The applicant shall submit a declaration statement affirming its compliance with Section 42F-103, Hawaii Revised Statutes.

See Application Page 4.

3. Public Purpose

In the article, "How Can We Be Smarter About Fighting Crime" Nick Herbert states, "The solution must lie in programs that are locally delivered, free from central micro-management, and specifically targeted." The Weed and Seed Hawai'i Project is such a project.

This grant will be used for a public purpose pursuant to Section 42F-102, Hawaii Revised Statutes.

II. Background and Summary

1. A brief description of the applicant's background

Weed and Seed Hawai'i has its roots in a program that was initially established by the U.S. Department of Justice in 1991. It is a community-based multi-agency approach to addressing violent crime, gang activity, drug use, and drug trafficking in communities that were hardest hit by violence and eroding social and economic stability.

In 2011, Operation Weed and Seed was adopted to serve as an outreach program under the United States Attorney, District of Hawai'i, and was aptly renamed Weed and Seed Hawai'i. In 2017, Weed and Seed Hawai'i, Inc. became the not-for-profit organization responsible for securing funding for Weed and Seed Hawai'i.

Today, Weed and Seed Hawai'i continues to work closely with the United States Attorney, District of Hawaii, the Honolulu Prosecutor's Office and the Honolulu Police Department as well as other Federal, State and City law enforcement partners.

2. The goals and objectives related to the request

The mission of Weed and Seed Hawai'i is to bring people and resources together to reduce crime in our communities through law enforcement, community engagement, social and economic revitalization, neighborhood beautification, and an investment in the future of our youth. A comprehensive approach is used to reduce and prevent crime and improve residents' overall quality of life. As a result, law-abiding citizens can live, work, and raise their families in a safer and more prosperous environment.

The Weed and Seed Hawai'i Project has three objectives:

(1) develop a comprehensive, multi-agency strategy to control and prevent violent crime, drug trafficking, and drug-related crime in target neighborhoods; (2) coordinate and integrate existing and new initiatives to concentrate resources and maximize their impact on reducing and preventing violent crime, drug trafficking, and gang activity; and (3) mobilize community residents in the target areas to assist law enforcement in identifying and removing violent offenders and drug traffickers from the community and to assist other human service agencies in identifying and responding to service needs of the target area.

3. The public purpose and need to be served

Crime leads to economic and social costs for those victimized and the communities they live and work in. To fully understand its impact we must examine all of the costs associated with crime.

Some of the economic costs of crime in response to crime include:

- cost to maintain courts to prosecute and try offenders,
- cost to defend accused offenders in court,
- costs for incarceration,
- lost wages for offenders who are incarcerated,
- reduced future employment opportunities for offenders, and
- societal future lost tax revenues from offenders.

Some of the costs as a direct consequence of crime include:

- lost wages for the victims,
- employer's lost productivity from victims,
- medical and mental health care treatment costs for the victims,
- property loss to the victims,
- society's cost to recover or get reimbursed for lost property, and
- funeral and burial costs affiliated to deceased victims.

Authorities spend millions of dollars each year on the prevention of crime and the detection, prosecution and punishment of criminals. In 2020, the Honolulu Police Department alone spent \$301.7 million and fielded 1,870 officers to fight crime on O'ahu. Their budget was up from 2019 despite having less officers out in the field.

In 2020, the Federal Bureau of Investigations Uniform Crime Report (UCR) for the City & County of Honolulu indicated that the number of reported index crimes dropped by 13.0%, violent crimes decreased 9.9%, and property crimes decreased 13.3%. Note that the Index Crime and Property Crime rates are the lowest on record since 1975. Some of this reduction can be attributed to lockdown procedures in place throughout the COVID-19 pandemic.

According to Tita, Petras and Greenbaum (2006), "crime serves as an important catalyst for change in the socio-economic composition of communities. Residents become less committed to their communities, causing the 'social fiber' of the community to be weakened." An example of a loss of social capital is when residents of neighborhoods with criminal reputations are judged to be associated with criminal activities, leading (amongst others) to stigmas that, for example, prevent those people from finding jobs. Existing research points to a powerful connection between residing in an adverse environment and participating in criminal acts (McCord, Widom, and Crowell, 2001).

Most researchers agree that "living in a neighborhood where there are high levels of poverty and crime increases the risk of involvement in serious crime for all children growing up there" (McCord, Widom, and Crowell, 2001:89). Research has identified other factors at the community, family, and individual levels that influence the development of delinquent and/or aggressive behaviors, including the availability of criminogenic tools (e.g. weapons), community disorganization, family history of problem behavior, family conflict, and a history of early antisocial behavior (Howell, 1995).

It is important to note that most adult criminals begin their criminal careers as juveniles. Preventing delinquency prevents the onset of adult criminal careers and thus, reduces the burden of crime on its victims and on society (Greenwood, 2008). **Therefore, it is imperative that we continue to reach out to the most at-risk youth in these high-need communities.**

The *Presidents Task Force on 21st Century Community Policing* reiterated that "personal interactions between police officers and community members build mutual trust, which is essential to addressing neighborhood problems and reducing crime." (2015)

Through the Weed and Seed Hawai'i Project we will work in designated geographical areas with a history of high levels of crime, drug use, gangs and severe economic deterioration. What sets our Project apart from others is our close partnership with law enforcement. However, law enforcement cannot do it alone. Helping to prevent crime is a shared responsibility and therefore, we will coordinate efforts for law enforcement to

work with community stakeholders to identify and address issues in these respective communities. In addition, our law enforcement partners will serve as mentors to the youth in these targeted sites.

4. Describe the target population to be served

The communities targeted by this Project are the 3 "graduated" Weed and Seed Seed Hawai'i sites in the City & County Honolulu:

- 1) Kalihi-Palama-Chinatown-Ala Moana-Sheridan
- 2) Waipahu
- 3) Ewa-Ewa Beach

Historically, all 3 sites have demonstrated varying degrees of success in reducing crime, gangs, drugs, and social dysfunction. We want to continue to build on that success. All 3 Weed and Seed Hawai'i sites already benefit from "brand name recognition," known both to criminals and to potential social service agencies and investors. We want to ensure that those prosecuted under the Weed and Seed umbrella continue to receive swifter and tougher penalties. Drug dealers may also be prosecuted by the Federal government for selling drugs within 1,000 feet of a public housing project, school, or public park.

This Project will primarily serve low to moderate income residents in the targeted communities with emphasis on reaching out to the most vulnerable populations including but not limited to, the **homeless, special needs population, senior citizens, English Second Language families** and **youth**.

5. Describe the geographic coverage.

The Project will take place in Kalihi-Palama-Chinatown-Ala Moana-Sheridan, Waipahu, and Ewa-Ewa Beach communities, which are part of 7 State Senate districts, 8 State House districts, 5 City Council districts, and 4 out of 8 Honolulu Police Department districts. Each Weed and Seed Hawai'i site works closely with a team of Community Policing officers from Districts 1, 3, 5 and 8. These police districts also report the highest number of incidences according to the 2016, 2017, 2018, 2019 and 2020 Honolulu Police Department Annual Reports.

III. Service Summary and Outcomes

1. Describe the scope of work, tasks, and responsibilities

The Weed and Seed Hawai'i project aims to improve public safety leading to increased economic activity while building the capacity of the lead community organizations involved.

By adopting the following key strategies and types of activities, the following outcomes will result:

- Reduced criminal activity
- Increased community participation, partnerships, and social networks
- Better and increased use of public spaces and
- Increased development of youth with healthy hopes, attitudes, and behaviors

Law Enforcement	Swift and certain consequences for misdemeanors lead to reduced recidivism.	Focuses on weeding out violent crime, gang activity, drug trafficking and drug-related crime. Activities are primarily undertaken by the Honolulu Police Department with support from the U.S. Attorney's Office, Honolulu Prosecutor's Office, and other law enforcement partners.
Community Policing	Strong relationships between local law enforcement and the community helps to reduce crime. The police and community proactively collaborate to address and respond to pressing issues. An empowered community will be able to sustain efforts of the safer community.	Embraces community engagement and problem solving. Activities encourage community participation and help to prevent crime. Examples include neighborhood watch and citizen patrols, rallies, and drug-free zones.
Prevention, Intervention, and Treatment	Youth activities lead to stronger foundation for the next generation. Opportunities for healthy activities lead to avoidance of criminal activities. Positive role models lead to youth reaching their potential.	Youth prevention and intervention activities promote wholesome behavior, good health, well-being, and personal success. Examples include youth sports, Jr. Golf, culinary arts classes, and youth mentoring sessions.
Neighborhood Revitalization	Community is everyone who lives, works, and worships there. A beautiful environment leads to more pride and less vandalism and destruction.	Improves economic and social conditions through job training, skill building, coalition building, and graffiti/clean-up projects.

Project staff will have the primary role in the coordination and implementation of activities. Project staff will carry out these activities with the support of their community Steering Committees, community partners and volunteers.

2. Provide a projected annual timeline for accomplishing the results or outcomes of the service

The following ***Community Policing*** activities will be conducted in person if safe and virtually when deemed necessary. The numbers represented below are the **cumulative** totals for **all sites** during the Project period.

- A minimum of 100 Citizen Patrol/Neighborhood Security Watch Walks, Trainings, and/or Meetings will be conducted with at least 500 adults and youth participating.
- A minimum of 12 sign waving events will be conducted with at least 120 adults and youth participating. These sign waving events may focus on Vehicular and Pedestrian Safety, Back to School and Holiday Safety, and/or Domestic Violence, E-cigarettes, Alcohol and Drug Use Prevention, etc.
- A minimum of 12 safety presentations will be conducted with at least 120 adults and youth participating. These safety presentations and/or fairs may focus on Traffic or Pedestrian Safety, Identity Theft/Fraud, How to Report a Crime/Scams, Active Shooter Preparedness, Cyberbullying/Bullying, Internet Safety, Truancy and Juvenile Laws, Gang Awareness and Prevention, Drug Use Education and Awareness, Dealing with Peer Pressure, Graffiti Laws and Prevention, Senior Safety, Emergency Preparedness, Celebrate Safe Communities, etc.

The following ***Prevention, Intervention and Treatment*** activities will be conducted in person if safe and virtually when deemed necessary. The numbers represented below are the **cumulative** totals for **all sites** during the Project period.

- A minimum of 25 youth sports, fitness, or recreation sessions will be conducted with at least 250 youth participating. These youth sports, fitness, or recreation sessions may include Junior Bowling, Junior Golf, Health and Fitness Sessions, Late Night Basketball, in-school intramurals, Youth Mentoring Outings, etc.
- A minimum of 15 youth character and leadership development sessions will be conducted with at least 150 youth participating. These youth character and leadership development sessions may include Nā Alaka'i, Keiki Kōkua Kūpuna, etc.
- A minimum of 25 youth career development and skill-based sessions will be conducted with at least 500 youth participating. These youth career development and skill-based sessions include Summer Culinary Arts and Internship Program, Academy of Professional and Public Services, Career Days, etc.
- A minimum of 50 youth mentoring, life skills and community service sessions will be conducted with at least 500 youth participating. These youth mentoring and life skills and community service sessions may include Real and Powerful (RAP), Happy Club, etc.
- A minimum of 20 youth intervention and mediation sessions will be conducted with at least 50 youth participating. These youth intervention and mediation sessions may include Adopt-A-School, Youth Concerns Intervention, etc.

- A minimum of 10 safe and drug free family engagement activities will be conducted with at least 400 adults and youth participating. These safe and drug free family engagement activities may include Movie and a Message, Heroes and Helpers, Christmas for Keiki, Thanksgiving 'Ohana Bingo, Waipahu Christmas Adopt-A-Family, Pride for Ewa, Harvest Festival, Holiday Gifting Program, Keiki and Cops, Hoakalei Hō'ike, Kūpuna Shop with a Cop, etc.

The following ***Neighborhood Restoration*** activities will be conducted in person if safe and virtually when deemed necessary. The numbers represented below are the **cumulative** totals for **all sites** during the Project period.

- A minimum of 10 graffiti paintouts, scrub downs, beach, stream, bike path and park clean ups will be conducted with at least 100 youth and adults participating.
- A minimum of 40 family support services will be conducted with at least 500 youth and adults participating. These family support services may include assistance with food, toiletries, unemployment, medical, resource information, PPE distribution, vaccinations, COVID-19 testing, etc.

3. Describe its quality assurance and evaluation plans for the request. Specify how the applicant plans to monitor, evaluate, and improve their results

The Project is designed to produce these outcomes through the following process:

- The Project in its entirety will be accountable and responsible to each Site Steering Committee, made up of volunteer community members.
- The Project will be evaluated internally with the assistance of each Site Steering Committee volunteers and staff.
- Additionally, participants in **ongoing** programs for each respective site will complete a pre/post evaluation of program. This will give staff the opportunity to improve the programs based on the needs of its recipients.
- Community feedback surveys will be conducted once a year to ensure that the broader stakeholders of the community can share their concerns and give input.

4. List the measure(s) of effectiveness that will be reported to the State agency through which grant funds are appropriated (the expending agency). The measure(s) will provide a standard and objective way for the State to assess the Project's achievement or accomplishment. Please note that if the level of appropriation differs from the amount included in this application that the measure(s) of effectiveness will need to be updated and transmitted to the expending agency.

Measures of effectiveness that will be reported include the following:

- Number of activities conducted within each site.
- Number of participants served.

Number of pre/post program evaluations conducted as well as summary.
 Number of satisfaction surveys conducted as well as summary.

IV. Financial

Budget

1. The applicant shall submit a budget utilizing the enclosed budget forms as applicable, to detail the cost of the request.

See attached budget forms. Attachment VIII.C.

2. The applicant shall provide its anticipated quarterly funding requests for the fiscal year 2023.

Quarter 1	Quarter 2	Quarter 3	Quarter 4	Total Grant
\$87,500	\$87,500	\$87,500	\$87,500	\$350,000

3. The applicant shall provide a listing of all other sources of funding that they are seeking for fiscal year 2023.

The applicant is seeking funding from the following sources for fiscal year 2023:

- Hawaii Community Foundation (FLEX Grants Program), May 2022
- Atherton Foundation, April 2022
- HMSA Foundation, April 2022
- Individual Private Parties
- Agency fundraisers
- City & County of Honolulu

4. The applicant shall provide a listing of all state and federal tax credits it has been granted within the prior three years. Additionally, the applicant shall provide a listing of all state and federal tax credits they have applied for or anticipate applying for pertaining to any capital project, if applicable.

The applicant has not applied for or anticipate applying for any state or federal tax credits.

5. The applicant shall provide a listing of all federal, state, and county government contracts, grants, and grants in aid it has been granted within the prior three years and will be receiving for fiscal year 2023 for program funding.

Weed and Seed Hawai'i, Inc. secured a contract from the City & County of Honolulu, Department of Housing and Homelessness for the period of July 1, 2021 – Dec. 31, 2021. Currently, Weed and Seed Hawai'i has an active contract with the State of Hawai'i, Department of Health for the period of December 1, 2021 – May 31, 2022.

6. The applicant shall provide the balance of its unrestricted current assets as of December 31, 2021.

The applicants unrestricted current assets as of December 31, 2021 is \$9,336.65.

It is important to note that Weed and Seed Hawai'i, Inc. has been covering payroll and other essential costs through private donations and fundraising in lieu of government grants and contracts which were awarded but funding not released by both the State and City government.

V. Experience and Capability

1. Necessary Skills and Experience

This Project utilizes subject matter experts who have staffed Weed and Seed Hawai'i in multiple communities extending back to 2005.

The Project is governed by the Weed and Seed Hawai'i Board of Directors which is comprised individuals who live or work in one of the respective sites. The Board of Directors meet at least once a month to discuss fiscal and management issues across the Project. The Board of Directors has 12 members and meets on average 5 hours per month for monthly board and project-related meetings and activities. It is estimated that 720 hours of Board support will be provided over the length of the Project at a rate of \$22.16 per hour resulting in a total Project in-kind contribution of \$15,955.20.

Each site is governed by a Steering Committee which consists of Weed and Seed Hawai'i staff, individuals who live or work in the site and at least 1 HPD Community Policing Officer. No other service provider has this type of law enforcement involvement.

Each Steering Committee is comprised of a minimum of 8 active members and is charged with designing the program for that site. The Steering Committees meet every other month to discuss issues in their community and make decisions and coordinate activities with Project partners. Each member participates on average 5 hours per month in monthly board and project related meetings and activities. It is estimated that 1,440 hours of advisory support will be provided over the length of the Project at a rate of \$22.16 per hour resulting in a total Project in-kind contribution of \$31,910.

Recognizing the necessity of community support and investment, each Steering Committee continually identifies area resources and partnerships, identifies, and assesses potential participants, and promotes, organizes, and manages its ongoing activities. Partners in the Project include, but are not limited to:

US Attorney Office, District of Hawai'i
Federal Bureau of Investigations
State of Hawai'i Attorney General's Office, Community & Crime Prevention
Branch
State of Hawai'i Department of Commerce and Consumer Affairs
City & County of Honolulu, Honolulu Police Department (District 1, 3, 5, 8)
City & County of Honolulu, Department of Housing & Homelessness
City & County of Honolulu, Prosecutor's Office
City & County of Honolulu, Department of Environmental Services
City & County of Honolulu, Department of Parks and Recreation
City & County of Honolulu, Department of Transportation Engineering Division
Coalition for a Drug-Free Hawai'i
FBI Citizens Academy Alumni Group
American Savings Bank
First Hawaiian Bank
Hawai'i USA FCU
Hawai'i Law Enforcement FCU
Hickam FCU
Hawai'i National Bank
HPPUD
Leahi Soccer Club
Queen Lili'uokalani Trust
Little Caesars Pizza (Ewa Beach, Waipahu)
Safeway Stores
Target Stores
WalMart Stores
YMCA of Honolulu
Adult Friends for Youth
Arts District Merchant Association
Ashner Management
Central Middle School
Chinatown Business Community Association
Chinatown Improvement District
Chinese Chambers
Dole Middle School
Family Promise Hawai'i
Farrington High School
Fern Elementary School
Friends of Chinatown
Hawai'i Convention Center
Kaewai Elementary School
Kalakaua Middle School
Kalihi/Chinatown Steering Committee
Kalihi Elementary School
Kalihi Kai Elementary School
Kalihi Uka Elementary School

Kekaulike Courtyard
Kids Hurt Too
Kukui Gardens
Lanakila Elementary School
Likelike Elementary School
McDonald's Corporate
PACT
Palama Settlement
Puuhale Elementary School
Rotary Club of Honolulu
Royal Kitchen
Sisco Hawai'i – O'ahu
Susannah Wesley Community Center
Waena Apartments
Hawai'i's Plantation Village
HCDCH
Home Depot
Honowai Elementary School
Independent Living Center
Inspire Church
Leeward O'ahu Lions Club
Leeward O'ahu Public Health Nursing Office
Lighthouse Outreach Center
McDonald's of Ewa Beach
McDonald's of Laulima
McDonald's of Waipahu
Meridian Pacific dba Waipahu Town Center
New Hope Leeward
Oasis at Waipahu
'Olelo at Waipahu
Waipahu Aloha Clubhouse
Waipahu Community Association
Waipahu Community Coalition
Waipahu Elementary School
Waipahu Hall Elderly
Waipahu Intermediate School
Waipahu High School
Waipahu Public Library
Waipahu Safe Haven
Waipahu Steering Committee
Waipahu Towers
Boys and Girls Club of Hawai'i - Hale Pono Clubhouse
City Mill
Coral Creek Golf Course
D.R. Horton-Schuler Division
Edward Enterprises

Ewa Beach Elementary
Ewa Beach Steering Committee
Ewa by Gentry Community Association
Ewa Makai Middle School
Gentry Homes, Inc.
HAM Produce & Seafood, Inc.
Hawai'i Community Foundation – Ewa Community Fund
Hawaiian Electric Company
Haseko Development
Hawai'i Gas
Hoakalei Country Club
Hoakalei Foundation
H&W Palama Meats
Ilima Intermediate School
James Campbell High School
Kaimiloa Elementary School
Keoneula Elementary School
Lions Club - Ewa Beach
L & L - Pearlridge
Loco Moco - Ewa Beach
Pearlridge Center
Pohakea Elementary
Roys at Ko Olina
Tropics Fish Hawai'i, LLC

2. Facilities

Each site has provisions for community meeting and activity space along with office/desk space for administrative duties of the Weed and Seed Hawai'i staff. The Executive Director has an office at the Ewa Beach Boys & Girls Club, Hale Pono Clubhouse in Ewa Beach. The Program Director has an office space at Waipahu Elementary School. Staff have access to other locations for meeting, program, and storage space.

In addition, each Weed and Seed Hawai'i staff member has available portable computing and telecommunications capability.

VI. Personnel: Project Organization and Staffing

1. Proposed Staffing, Staff Qualifications, Supervision and Training

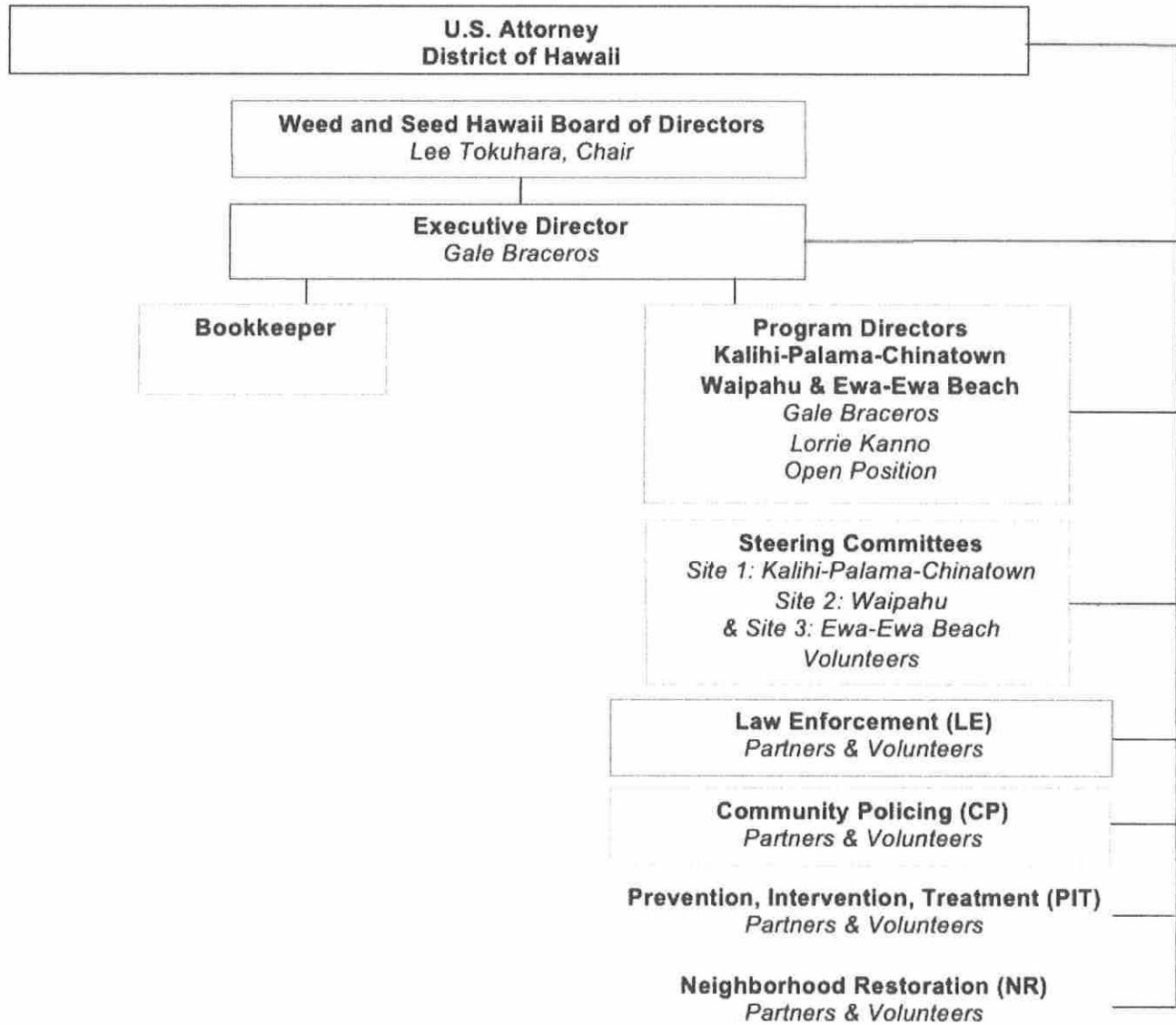
See attachments in Section VIII for descriptions of staff positions and resumes of key staff.

A liaison from the Weed and Seed Hawai'i Board of Directors provides support and supervision to the Executive Director on a regular basis. The Executive

Director maintains daily communication and provides support and supervision for the Program Director on a regular basis.

2. Organization Chart

Weed and Seed Hawaii Organizational Chart



3. Compensation

No Board of Directors officers or directors are compensated for their efforts. No Site Steering Committee members are compensated for their efforts. The annual salaries of the three highest paid employees are:

Program Directors (2) - \$75,000.00 (filled) and \$52,000.00 annually (vacant).
Executive Director (1) – \$105,000.00 annually (filled).

VII. Other

1. Litigation

There is no pending litigation for which Weed and Seed Hawai'i is a party to.

2. Licensure or Accreditation

Project staff possess certifications in Grassroots Leadership Development, Strategic Thinking and Planning, Community Capacity Development Certifications (U.S. DOJ), Gang Violence Awareness Certifications and other areas related to this project.

3. Private Educational Institutions

This grant will not be used to support or benefit a sectarian or non-sectarian private educational institution.

4. Future Sustainability Plan

For this Project to be successful in the long-run, four objectives must be met:

- By working across communities and sharing resources, benefits of scale, shared knowledge and increased cooperation maximizes opportunity for sustainability.
- The Project needs to convince funders that the strategies offered in the project benefit a wider area than simply the communities the project works in. Funders need to understand that criminals often simply move around seeking the most vulnerable communities. Several funding opportunities have been identified and will be pursued. They include:

Hawaii Community Foundation (FLEX Grants Program), May 2022
Atherton Foundation, April 2022
HMSA Foundation, April 2022
Individual Private Parties
Agency fundraisers

City & County of Honolulu

- The dynamic nature of each steering committee with its ever-changing volunteer membership requires Project staff to provide the institutional memory and capacity needed to manage existing and develop new projects. Sites must continue to assist in identifying and developing proposals for funding which fit within the projects' goals and objectives. Multiple funding opportunities have already been recognized.
- The best way to extend the Weed and Seed Hawai'i Project is to make sure that it is "marketed" throughout the communities it serves and beyond so that others may also monetarily and voluntarily contribute to the success of the Project.

Weed and Seed Hawai'i staff members have the experience and capacity to make the Project the success it is. The Executive Director and Program Director bring 30 years of experience in the field.

Some of the strengths and resources that the Weed and Seed Hawai'i staff bring are strong partnerships and interdependent cooperation, enhanced enforcement rules (Weed and Seed Courtroom), community driven projects and activities, strong relationships with community and youth, and commitment of police officers in their respective sites.

It is largely due to the ongoing efforts of its staff that community commitments have increased where stakeholders take an increasingly active role in clean up campaigns and community activities rather than passively relying on government or other entities to keep their neighborhoods safe and clean. In 2016, 7,924 volunteers logged 1,406 hours while in 2017, 9,835 volunteers logged 1,441.25 hours. In 2018, 4,412 volunteers logged 968.25 hours. In these three years, we have saved government **millions of dollars** through in-kind support.

A project of this scope, with this level of community involvement invariably attracts community support. In addition to volunteer support, In-kind contributions received in the most recent year and are anticipated to be received in the next project year from the following:

US Attorney Office, District of Hawai'i
Federal Bureau of Investigations
State of Hawai'i Attorney General's Office, Community & Crime Prevention Branch
State of Hawai'i Department of Commerce and Consumer Affairs
City & County of Honolulu, Honolulu Police Department (District 1, 3, 5, 8)
City & County of Honolulu, Department of Housing & Homelessness
City & County of Honolulu, Prosecutor's Office
City & County of Honolulu, Department of Environmental Services

City & County of Honolulu, Department of Parks and Recreation
City & County of Honolulu, Department of Transportation Engineering Division
Coalition for a Drug-Free Hawai'i
FBI Citizens Academy Alumni Group
American Savings Bank
First Hawaiian Bank
Hawai'i USA FCU
Hawai'i Law Enforcement FCU
Hickam FCU
Hawai'i National Bank
HPPUD
Leahi Soccer Club
Queen Lili'uokalani Trust
Little Caesars Pizza (Ewa Beach, Waipahu)
Safeway Stores
Target Stores
WalMart Stores
YMCA of Honolulu
Adult Friends for Youth
Arts District Merchant Association
Ashner Management
Central Middle School
Chinatown Business Community Association
Chinatown Improvement District
Chinese Chambers
Dole Middle School
Family Promise Hawai'i
Farrington High School
Fern Elementary School
Friends of Chinatown
Hawai'i Convention Center
Kaewai Elementary School
Kalakaua Middle School
Kalihi/Chinatown Steering Committee
Kalihi Elementary School
Kalihi Kai Elementary School
Kalihi Uka Elementary School
Kekaulike Courtyard
Kids Hurt Too
Kukui Gardens
Lanakila Elementary School
Likelike Elementary School
McDonald's Corporate
PACT
Palama Settlement
Puuhale Elementary School

Rotary Club of Honolulu
Royal Kitchen
Sisco Hawai'i – O'ahu
Susannah Wesley Community Center
Waena Apartments
Hawai'i's Plantation Village
HCDCH
Home Depot
Honowai Elementary School
Independent Living Center
Inspire Church
Leeward O'ahu Lions Club
Leeward O'ahu Public Health Nursing Office
Lighthouse Outreach Center
McDonald's of Ewa Beach
McDonald's of Laulima
McDonald's of Waipahu
Meridian Pacific dba Waipahu Town Center
New Hope Leeward
Oasis at Waipahu
'Olelo at Waipahu
Waipahu Aloha Clubhouse
Waipahu Community Association
Waipahu Community Coalition
Waipahu Elementary School
Waipahu Hall Elderly
Waipahu Intermediate School
Waipahu High School
Waipahu Public Library
Waipahu Safe Haven
Waipahu Steering Committee
Waipahu Towers
Boys and Girls Club of Hawai'i - Hale Pono Clubhouse
City Mill
Coral Creek Golf Course
D.R. Horton-Schuler Division
Edward Enterprises
Ewa Beach Elementary
Ewa Beach Steering Committee
Ewa by Gentry Community Association
Ewa Makai Middle School
Gentry Homes, Inc.
HAM Produce & Seafood, Inc.
Hawai'i Community Foundation – Ewa Community Fund
Hawaiian Electric Company
Haseko Development

Hawai'i Gas
Hoakalei Country Club
Hoakalei Foundation
H&W Palama Meats
Ilima Intermediate School
James Campbell High School
Kaimiloa Elementary School
Keoneula Elementary School
Lions Club - Ewa Beach
L & L - Pearlridge
Loco Moco - Ewa Beach
Pearlridge Center
Pohakea Elementary
Roys at Ko Olina
Tropics Fish Hawai'i, LLC

- VIII. Attachments:**
- A. Project Position Descriptions**
 - B. Key Project Staff**
 - C. Budget Documents**
 - D. Letters of Support**

Executive Director Job Description

VIII.A

REPORTS TO: Weed and Seed Hawai'i, Inc. Board of Directors**RESPONSIBILITIES:**

- Implement programs and projects, with moderate guidance, as determined by the Board.
- Assist with review and evaluation of development, operating and services plans for projects.
- Collaboratively design and develop new program initiatives and strategies to meet service provider and property management needs.
- Collaboratively develop tools to support capacity building and technical assistance. Provide technical assistance. Conduct trainings and workshops.
- Develop funding action recommendations. Monitor grants progress and compliance with performance and reporting requirements.
- Administer and monitor program action recommendations and consultant agreements.
- Prepare fundraising proposals. Manage and track grant related expenditures.
- Create and maintain relationships with grantor staff, advisory committee members, program funders, providers, and other external partners.
- Identify and disseminate supportive housing models and related materials that reflect best practices and innovative approaches to meeting the needs of various stakeholders.
- Work collaboratively with communities to establish and attain strategic goals annually.
- Perform any other organization related duties or special projects as directed by the Board.
- Work related travel as required.

REQUIRED QUALIFICATIONS:

- Bachelor's degree, or advanced degree in related field strongly preferred. Additional experience may substitute for education.
- Minimum of 4 years' experience in finance, community development, support services or employment services, as relevant to program responsibilities. Additional education may substitute for experience.
- Excellent verbal and written communication skills.
- Strong organizational, project management, interpersonal, research, and analytic skills.
- Strong computer skills. Demonstrated proficiency using Microsoft Office Suite (Word, Excel, Access, and Outlook).
- Eagerness and ability to manage a diverse set of tasks.
- Skilled in facilitation, team building, forging collaborative partnerships, and developing and maintaining strong relationships within the community and in convening and engaging people from diverse groups and sectors.

- Able to work independently with minimal supervision and be able to represent Weed and Seed Hawaii in public forums with a high level of professionalism.
- Familiarity with relevant state and local policy as well as financing mechanisms for operating and support services.
- Demonstrated ability to work effectively with professional staff, government agencies and community-based organizations.
- Ability to realistically assess capacity and provide technical assistance on a group or individual basis.

Bookkeeper/Tax Preparer Job Description

REPORTS TO: Executive Director

SUMMARY: Working under the supervision of the Project Manager, the bookkeeper/tax preparer is responsible for the day-to-day operation and maintenance of the project financial records (general ledger).

Duties include, but are not limited to, the following:

RESPONSIBILITIES:

- Development of Financial system including chart of accounts, and QuickBooks system. Conducts all duties associated with bi-weekly accounts payable including: interacting with staff and vendors; processing invoices; expense coding; and data entry.
- Conducts all duties associated with accounts receivable including preparing and submitting vouchers to city and state agencies and private funders; performing bank deposits; and tracking and following up on all account receivables.
- Conducts all duties associated with bi-weekly payroll, including inputting data to Paychex. Performs monthly bank reconciliations for bank accounts.
- Performs credit card reconciliations.
- Processes cash disbursements and assists in cash management. Assists in gathering required documents as backup to vouchers. Assists in 1099 preparation.
- Assists with preparing annual audit schedules. Assists with any government audit that may occur.
- Gathers all necessary financial reporting to federal, city and state agencies, as needed.

KEY ORGANIZATIONAL RELATIONSHIPS:

This position works in close collaboration with Project Leadership and Staff

REQUIRED QUALIFICATIONS:

- Accounting degree (or an equivalent degree) with at least three years' accounting operations experience preferably with a nonprofit organization
- Good knowledge of standard accounting practices.
- Knowledge of QuickBooks and Microsoft Word and Excel are required.
- Must possess a keen attention to detail and a commitment to high quality work.
- Excellent organizational and follow-through skills, ability to multi-task, prioritize and work under deadlines.
- Solid communication (both verbal and written) skills.
- Ability to maintain strict confidentiality and communicate in a professional manner with staff, funders, and vendors.

- Ability to deal effectively with a variety of people and work in a team environment. Interest in community development a plus.

Weed and Seed Hawai'i Program Director Job Description

REPORTS TO: Executive Director

SUMMARY: The Program Director is responsible for facilitating community-building initiatives designed to improve conditions in the Weed & Seed project neighborhoods. Success of the program will depend on the involvement of neighborhood residents, stakeholders, and community institutions. The Program Director will need to demonstrate leadership skills result in volunteer participation in program activities. Grant funding is committee for 12 months for this position.

Duties include, but are not limited to, the following:

RESPONSIBILITIES:

- Network community residents and neighborhood-based institutions to increase collaboration, relationship and community building and development and implementation of new initiatives that benefit the service area
- Increase connectivity of neighborhood residents to one another
- Network grassroots, community-based non-profits, and institutions to one another, creating opportunities for partnerships and collaboration
- Connect residents and institutions together to create positive comprehensive community change
- Implement a comprehensive network weaving model to increase resident engagement/involvement and connect residents to opportunities using an asset-based approach
- Coordinate youth leadership programs and various neighborhood programs
- Develop programming and collaborative partnerships with all neighborhood-based schools and education initiatives
- Assist in the planning, marketing, and implementation of community-based events, including community clean-ups, etc.
- Develop volunteer leaders among neighborhood residents, stakeholders, and community institutions
- Promote public relations and outreach campaigns
- Serve as liaison with participating organizations and stakeholders
- Submit required narrative and budget reports on a timely basis to ensure compliance with program guidelines
- Collect and compile necessary data and evaluation requests
- Develop program goals and measurable evaluation criteria
- Prepare small grant proposals with neighborhood groups and community institutions to assist in project development
- Attend block club meetings and recruit volunteers
- Conduct door-knocking and outreach campaigns
- Other duties as assigned

REQUIRED QUALIFICATIONS:

- Bachelor's degree (or equivalent work experience) in social work, urban studies, human services, non-profit administration, or related field
- Five years' experience in community organizing or social service, or neighborhood development
- Leadership and team building skills
- Availability and willingness to work flexible schedule including evenings and weekends; local travel and some out-of-town travel required.
- Ability to work with people of all racial, ethnic and income backgrounds.
- Passion for creating social change, combines with sufficient detachment to allow residents to make their own decisions about issues, strategies, and tactics.
- Good written and verbal communication skills and an ability to "think on your feet"
- Ability to work independently with minimal supervision

- Excellent oral communication and writing skills; proficiency in preparing written reports and business correspondence
- Computer proficiency including Word and Excel and use of the Internet
- Driver's license, insurance and automobile in good condition

PREFERRED QUALIFICATIONS:

Master's Degree

Five or more years of relevant work experience

Experience with grantsmanship, fundraising and budget preparation and reporting

PHYSICAL DEMANDS

Ability to operate a computer and keyboard. Ability to operate a motor vehicle or equipment. May require reaching, standing, walking and the ability to lift or move objects up to 20 pounds. May require vocal communication for expressing or exchanging ideas, hearing to perceive information at normal spoken word levels, visual acuity for color perception, preparing and analyzing written or computer data, determining the accuracy and thoroughness of work and observing general surrounding and activities.

WORKING CONDITIONS

Availability for extended hours during peak periods and attendance at evening and weekend meetings.

Exposure to inside and outside environmental conditions. The office is located in a smoke free facility.

This position description is not intended to be a complete list of all responsibilities, duties or skills required for the job and is subject to review and change at any time, with or without notice, in accordance with the needs of the project. Since no position description can detail all the duties and responsibilities that may be required from time to time in the performance of a job, duties and responsibilities that may be inherent to the job, reasonably required for its performance or required due to the changing nature of the job shall also be considered part of the jobholder's responsibility.

VIII.B

Lorrie W. Kanno P.O. Box 971477, Waipahu HI 96797, Phone: 808-626-2879

- EDUCATION** Bachelor of Arts – Social Work and Bachelor of Arts – Liberal Arts: Behavioral Science, 1989
CONCORDIA UNIVERSITY, Portland, Oregon
- WORK EXPERIENCE** Weed & Seed Program Director, Kalihi-Palama-Waipahu (Jan. 1, 2018 to Present)
WEED AND SEED HAWAII, INC.
Weed & Seed Community Coordinator, Kalihi-Palama-Waipahu (Feb. 2015 to Dec. 31, 2017)
EMPOWER O'AHU/WAHIWA CBDO
Weed & Seed Program Director, Kalihi-Palama-Waipahu (Jul. 2009 to Feb. 2015)
LEEWARD/METRO YMCA
To coordinate opportunities for residents and businesses to work cooperatively in taking control of their neighborhoods for a cleaner, safer community that nurtures healthy family living and work environments. This effort includes developing collaborative, synergistic working relationships between social agencies, businesses, faith-based counsels, residents, and other community organizations. The focus is to facilitate positive community action, coordinate community communications, and serve as a liaison between the community and the Honolulu Police Department.
- Rural Youth Program Director/Outreach Services Supervisor – Oct. 2004 through June 2009
KALIHI YMCA
Responsible for the management of daily operations of sites from Waipahu to Waianae. Serves as a liaison between schools, service providers, churches, and families. Responsible for recordkeeping and site reports. Provides direct supervision to staff and monitors progress of program participants. Facilitates staff meetings/trainings and participates in Association personnel trainings/meetings and community activities/projects.
- Senior Program Director – June 1994 through September 2004
COMMUNITIES IN SCHOOLS – HAWAII
Responsible for the management of daily operations of site. Serves as a liaison between schools, service providers, churches, and families. Responsible for overall records and reports of various programs to funding sources; monitoring and reporting of select clientele. Responsible for the coordination of services for students and families, developing collaborations between service providers, bridging the community with resources, facilitation of all programs, production of quarterly newsletters, training in the 'Ohana Management System and supervision of all staff and volunteers. Works closely with Executive Director and other Program staff in writing grants; facilitating staff meetings/trainings, participating in Association personnel trainings/meetings and community activities/projects.
- COMMUNITY SERVICE** Team Fundraising Coordinator & Scholarship Committee Member – July 2011 to present
LEAHI SOCCER CLUB
Responsible for selection of scholarship recipients twice a year. Responsible for organizing and coordinating team and specific Club fundraisers.
- Parent Volunteer – October 2015 to present
KAMEHAMEHA SCHOOLS GIRLS VARSITY SOCCER
Assist with planning fundraising and bonding events for the team players, coaches and families.
- Parent Volunteer – August 2004 to present
KAMEHAMEHA SCHOOLS CLASS OF 2017, 2019 & 2021
Assist with planning events for the families and students of KS Class of 2017, 2019 & 2021 including but not limited to, Senior Lu'au and Project Graduation.
- CERTIFICATES** Intro to Leading Others, YMCA of the USA, Honolulu, Hawai'i, 2013
Interviewing Guide eLearning, YMCA of the USA, Honolulu, Hawai'i, 2013

Enforcing Underage Drinking Laws, Office of Juvenile Justice and Delinquency Prevention, Waipahu, Hawai'i, 2012
Introduction to Design Thinking, Design Thinking Hawai'i, Honolulu, Hawai'i, 2011
Engage! Lead! Training, Neighbor Works America, Waipahu, Hawai'i, 2011
Gangs 101 Workshop, Missouri Western State University Regional Community Policing Institute, Waipahu, Hawai'i, 2010
First Aid/CPR for Adults, Medic First Aid, Honolulu, Hawai'i, August 2010
Listen First, YMCA of Honolulu, Kalihi, Hawai'i, 2009
Motivational Interviewing Basic and Advanced Skills, State of Hawai'i Department of Health Alcohol and Drug Abuse Division, Kapolei, Hawai'i, 2009
Senior Director, YMCA of the USA, Honolulu, Hawai'i, November 2008
Current Support Director Institute, YMCA of the USA, Honolulu, Hawai'i, May 2001
Introduction to Not-For-Profit Marketing, YMCA of the USA, Honolulu, Hawai'i, November 1999
Pricing, YMCA of the USA, Honolulu, Hawai'i, November 1999
YMCA Program Management and Development, YMCA of the USA, Honolulu, Hawai'i, November 1999
Grant Proposal Writing Workshop, the Grantsmanship Center, Honolulu, Hawai'i, May 1997
Principles and Practices, YMCA of the USA, Berkeley, California, April 1997
Group Work, YMCA of the USA, Honolulu, Hawai'i, March 1996
Volunteerism and the YMCA, YMCA of the USA, Honolulu, Hawai'i, September 1995
LTP Delivery Module, YMCA of the USA, Honolulu, Hawai'i, April 1995
Problem Solving and Decision Making and Substance Abuse Prevention, YMCA of the USA, Honolulu, Hawai'i, November 1993
Basics in Community Development, Working with 10-14 Year Olds and Working with 15-17 Year Olds, YMCA of the USA, Honolulu, Hawai'i, November 1992
Program Trainer Orientation, YMCA of the USA, Honolulu, Hawai'i, October 1992

OTHER EXPERIENCES

Hawai'i Health Data Warehouse Training, Honolulu, Hawai'i, 2012
Gang Violence Prevention Training, National Crime Prevention Council, Waipahu, Hawai'i, 2011
CCDO National Conference, Department of Justice, Tampa, Florida, 2009
Healthy Honolulu Together Curriculum Writer, Kalihi YMCA, Honolulu, Hawai'i, 2009
Ka Ulu Pono Curriculum Writer, Kalihi YMCA, Honolulu, Hawai'i, 2009
Alaka'i Malama Academy Planning Team Advisor, Communities in Schools of Hawai'i, Waipahu, Hawai'i, 1995 to 2003
Living Aloha Through Volunteerism Regional Conference Facilitator, Communities in Schools of Hawai'i, Waipahu, Hawai'i, 1999
Orientation to Social Services Division, Philosophy & Resources (Family Centered Strengths & Needs Based Practice), Overview of CPS Statutes, HRS 350 & 587 and Behavioral & Physical Indicators of Child Abuse and Neglect Trainings, Department of Human Services, Honolulu, Hawai'i, 1999

HONORS

City & County of Honolulu, Environmental Services Good Neighbor & Environmental Hero – Weed and Seed, 2021
City & County of Honolulu, Honolulu Police Department Service Award: Citizen of the Year, 2017
State of Hawai'i Governor's Sexual Assault Awareness Month Proclamation Awardee, 2018

REFERENCES

Gale Mejia, Program Director, The Learning Coalition, 808-542-8133
Paul Taga, Principal, Keoneula Elementary School, 808-861-6656

Gale Tsuyo Braceros
Mobile: 808-232-6437

Experience: Weed and Seed Hawaii
January 1, 2017, to present
Position: Executive Director

Empower Oahu/Wahiawa CBDO
Weed & Seed Hawaii
February 2015- December 31, 2016
Position: Community Coordinator

YMCA of Honolulu
Leeward YMCA/Metro
Weed & Seed Hawaii
May 2, 2005 – February 2015
Position: Program Director

Duties: To coordinate opportunities for residents and businesses to work cooperatively in taking control of their neighborhoods for a cleaner, safer community that nurtures healthy family living and work environments. This effort includes developing collaborative, synergistic working relationships between social agencies, businesses, faith-based counsels, residents, and other community organizations. The focus is to facilitate positive community action, coordinate community communications, and serve as a liaison between the community and the Honolulu Police Department.

- To supervise and provide resources and assistance to program staff.
- Work with residents, businesses, and service providers in the community to help identify problems and needs.
- Conduct community surveys in focus areas; collect data to identify the focus areas; establish a plan of action with sub-committees.
- Attend monthly Neighborhood Board Meetings, reporting upcoming events and answering any community concerns.
- Receive complaints and concerns, reporting illegal activities from the community to HPD for timely follow up.
- Attend Association meetings for 'Ewa/Ewa Beach area, conducting Weed & Seed presentations and providing basic training.
- Facilitate Weed & Seed Committee meetings (Neighborhood Restoration Committee, Economic Development Committee, Legislature Committee and Steering Committee).
- Participate in community events, providing resources and promoting active ties relating to Weed & Seed's strategies.
- Facilitate and organize community events and projects with residents, businesses, and service providers (Neighborhood Restoration Projects, Community Policing events and activities, Prevention, Intervention and Treatment events).
- Build active partnerships, in and out of the community, in support of community initiatives.
- Collect crime stats and monthly weeding activities from Weed & Seed officers to include in monthly reports.
- Monitor all federal, state and city grants for assigned site.

Accomplishments:

Nov. 2005	YMCA Group Work Training - Certificate of Completion
April 18, 2013	YMCA Introductions to Leading Others
April 2007	Community Capacity Development Offices (DOJ): Weed & Seed Honolulu chosen one of 8 Best Practice Weed & Seed site nationally
May 2007	Kapolei Outstanding Achievement Award (KOA) for Community Service-Organization

Honolulu Community College 2002- 2003
Completed Family Advocate Certification (A Federal Program) Courses:
Human Development/FAMR 250
Domestic Violence/Dynamics of Family Violence, FAMR
133
Working with People, FAMR 296
Family Dynamics/Interviewing Difficult Families
SOSER 21

Kapiolani Community College
Certified Nursing Assistant 1975
Licensed Practical Nurse 1977

Waianae High School 1971-1975
High School Diploma

Training:

Child Abuse/Neglect
Second Step Program (Selected to attend training to develop parenting
classes with parents)
Drug Awareness/Recognizing the Problem
Working with Micronesians/Learning their culture
Federal Grant Application Training – 2007
Community Leadership Training – 2006
Helping Build Safer Communities – 2007
Community Capacity Builders Forum – 2009
Grassroots Leadership Development – 2009
Strategic Thinking and Planning – 2009

Conferences

Community Capacity Development Office (U.S. Department of Justice):
August 22-25, 2005 - Community building and sustainability

CCDO: March 27-30, 2006 - Strategy Development Training
NeighborWorks America - October 12 – 15, 2006
- Plant a Seed of Change and Grow a Better Neighborhood

NeighborWorks America - May 6-8, 2009
- Building Powerful Community Partnership
- Grassroots Leadership Development
- Strategic Thinking and Planning

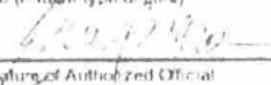
CCDO Implementation and Strategy Training - 2010
Community Leadership Institute- Neighbor Works Training - 2011
National Crime Prevention Council- Gang Violence Awareness
Prevention Training - October 2011

References can be provided upon request.

BUDGET REQUEST BY SOURCE OF FUNDS

Period: July 1, 2022 to June 30, 2023

Applicant: Weed and Seed Hawaii, Inc.

BUDGET CATEGORIES	Total State Funds Requested (a)	Total Federal Funds Requested (b)	Total County Funds Requested (c)	Total Private/Other Funds Requested (d)
A PERSONNEL COST				
1 Salaries	180,000			
2 Payroll Taxes & Assessments	23,616			
3 Fringe Benefits	0			
TOTAL PERSONNEL COST	203,616			
B OTHER CURRENT EXPENSES				
1 Airfare, Inter-Island	0			
2 Insurance	0			
3 Lease/Rental of Equipment	0			
4 Lease/Rental of Space	4,000			
5 Training	2,000			
6 Supplies	5,000			
7 Telecommunication	840			
8 Utilities	0			
9 Contract Service: Evaluation	15,000			
10 Contract Service: Bookkeeper/Tax Preparer	8,500			
11 Contract Service: HPD Overtime	40,000			
12 Community Activity Supplies	27,044			
13 Mileage/Parking	3,000			
14 Transportation	0			
15 Marketing	5,000			
16 Admission Fees	0			
17 Awards	2,000			
18 Banners/Signs/T-shirt/cloths	5,000			
19 Staff/Volunteer Shirts	5,000			
20 Indirect	20,000			
TOTAL OTHER CURRENT EXPENSES	142,384			
C EQUIPMENT PURCHASES	4,000			
D MOTOR VEHICLE PURCHASES	0			
E CAPITAL	0			
TOTAL (A+B+C+D+E)	350,000			
SOURCES OF FUNDING		Budget Prepared By:		
(a) Total State Funds Requested	350,000	Gale Braccius	808-376-7005	
(b) Total Federal Funds Requested	0	Name (Please type or print)	Phone	
(c) Total County Funds Requested	0		6/17/2022	
(d) Total Private/Other Funds Requested	0	Signature of Authorized Official	Date	
TOTAL BUDGET	350,000	Gale Braccius, Executive Director Name and Title (Please type or print)		

BUDGET JUSTIFICATION - EQUIPMENT AND MOTOR VEHICLES

Period: July 1, 2022 to June 30, 2023

Applicant Weed and Seed Hawaii, Inc.

DESCRIPTION EQUIPMENT	NO. OF ITEMS	COST PER ITEM	TOTAL COST	TOTAL BUDGETED
MacBook Pro 13.3" Laptop Computer + Microsoft 365 Family	1.00	\$1,700.00	\$ 1,700.00	1700
15 month subscription			\$ -	
MacBook Pro 13.3" Laptop Computer	1.00	\$1,600.00	\$ 1,600.00	1600
Epson Workforce Pro WF-3820 Wireless All-in-one Printer	2.00	\$190.00	\$ 380.00	380
Epson Ink Cartridge T822 XL 4-pack color	2.00	\$78.00	\$ 156.00	156
Epson Ink Cartridge T822 XL Black	4.00	\$41.00	\$ 164.00	164
TOTAL:	10.00		\$ 4,000.00	4,000
JUSTIFICATION/COMMENTS				

DESCRIPTION OF MOTOR VEHICLE	NO. OF VEHICLES	COST PER VEHICLE	TOTAL COST	TOTAL BUDGETED
			\$ -	
			\$ -	
			\$ -	
			\$ -	
TOTAL:				
JUSTIFICATION/COMMENTS. Two (2) laptops with software, two (2) printers with ink cartridges will be used to provide services.				

BUDGET JUSTIFICATION - CAPITAL PROJECT DETAILS

Period: July 1, 2022 to June 30, 2023

Applicant: Weed and Seed Hawaii, Inc

FUNDING AMOUNT REQUESTED						
TOTAL PROJECT COST	ALL SOURCES OF FUNDS RECEIVED IN PRIOR YEARS		STATE FUNDS REQUESTED	OTHER SOURCES OF FUNDS REQUESTED	FUNDING REQUIRED IN SUCCEEDING YEARS	
	FY: 2020-2021	FY: 2021-2022	FY: 2022-2023	FY: 2022-2023	FY: 2023-2024	FY: 2024-2025
PLANS	N/A					
LAND ACQUISITION	N/A					
DESIGN	N/A					
CONSTRUCTION	N/A					
EQUIPMENT	N/A					
TOTAL:	0	0	0	0	0	0
JUSTIFICATION/COMMENTS:						

GOVERNMENT CONTRACTS, GRANTS, AND / OR GRANTS IN AID

Applicant: Weed and Seed Hawai'i, Inc.

Contracts Total: 49,990

	CONTRACT DESCRIPTION	EFFECTIVE DATES	AGENCY	GOVERNMENT ENTITY (U.S./State/Hawaii/ Honolulu/ Kauai/ Maui County)	CONTRACT VALUE
1	Sole Source Contract	12/1/21 - 5/31/22	State Dept of Health	State	49,990
2					
3					
4					
5					
6					
7					
8					
9					
10					
11					
12					
13					
14					
15					
16					
17					
18					
19					
20					
21					
22					
23					
24					
25					

Department of the Prosecuting Attorney
City and County of Honolulu

ALII PLACE
1060 RICHARDS STREET • HONOLULU, HAWAII 96813
PHONE: (808) 768-7400 • FAX: (808) 768-7515



STEVEN S. ALM
PROSECUTING ATTORNEY

THOMAS J. BRADY
FIRST DEPUTY
PROSECUTING ATTORNEY

January 19, 2022

Senator Donovan Dela Cruz, Chairman Senate Ways and Means Committee
Representative Sylvia Luke, Chairman, House Finance Committee
Hawaii State Capitol
415 S. Beretania Street, Room 306
Honolulu, Hawaii 96813

Re: Grant Application from Weed and Seed Hawai'i, Inc. for Project Weed and Seed

My name is Steven S. Alm, and I am the Honolulu Prosecuting Attorney. I am seeking your support of the proposal submitted by Weed and Seed Hawai'i, Inc. (WSHI) to support the Weed and Seed Project in Kalihi-Palama/Chinatown, Waipahu, and Ewa-Ewa Beach to reduce crime.

I am fully committed to supporting evidence-based practices to ensure that resources are spent to achieve desired outcomes. The effectiveness of this strategy was established during the first implementation of Weed and Seed in the Kalihi-Palama/Chinatown neighborhood in the late-1990's. While serving as the United States Attorney for Hawai'i, I adopted the U.S. Department of Justice's (DOJ) strategy to respond to the high rates of criminal activity in Honolulu through a comprehensive, multiagency approach to law enforcement, crime prevention, and community revitalization. Between 1997 and 2001, drug offenses were reduced within the site by half, and by 75% in all other felonies and 69% for all misdemeanors. The successes early-on led to the expansion of the Weed and Seed strategy to two other Weed and Seed sites, in Waipahu and Ewa-Ewa Beach.

Unfortunately, a change in leadership at the U.S. Attorney's Office in 2001 resulted in the "Weed" component being reduced and eventually eliminated. Absent the Weed component, the Weed and Seed sites slowly deteriorated back to the original conditions of crime, homelessness, and disrepair.

For example, now, two decades later, the Kalihi-Palama/Chinatown area records the highest number of violent crimes on Oahu (Murder, Rape, Robbery, and Aggravated

Senator Donovan Dela Cruz
Representative Sylvia Luke
January 19, 2022
Page 2

Assault). Additionally, arrest data shows that this site also leads in arrests for Burglary, Larceny, and Auto Theft. Point-in-time reports from Partners in Care also note that Region 1, which encompasses the Downtown Honolulu-Kalihi-Nuuanu area which closely overlaps with the Kalihi-Palama/Chinatown site, has experienced a steady increase in homelessness. In fact, as of 2020, 32% of the unsheltered homeless population, the highest on Oahu, live in this area.

My interest in restoring Weed and Seed (first in the Chinatown site) comes with the knowledge that communities and its needs change over time. For this reason, we partnered with key stakeholders (including all the major banks downtown) in 2021 to effect a targeted approach toward community improvements of the Chinatown area. A research company, Anthology, collected baseline data to capture the concerns, as well as the hope and vision, of the residents, businesses, and visitors to the area with plans to re-survey the area after two years of Weed and Seed interventions. This outcome data will serve to inform us of the effectiveness of Weed and Seed.

However, a new problem recently arose. In 2020, WSHI (the coordinating body for Seeding efforts), was not awarded grant funding as in previous years to continue its activities, and has largely been dependent on donations and small grants to fund the salaries of its two coordinators. By September 2021, all funds were depleted and WSHI could not meet payroll obligations to fund its two coordinators.

In order for Weed and Seed to be effective, it is imperative that both the Weed (administered by the Prosecutor's office) and the Seed (administered by WSHI) components are fully functioning. While the Anthology survey will inform Weed and Seed goals and objectives, the coordinators dedicated for the implementation of Weed and Seed will be crucial in coordinating the network of committed citizens and businesses towards these goals.

I urge you to support the request for the Weed and Seed Hawai'i, Inc. Grant-in-Aid.

Sincerely,

A handwritten signature in black ink, appearing to read 'S. Alm', written over a horizontal line.

Steven S. Alm
Prosecuting Attorney

January 19, 2022

Senator Donovan Dela Cruz, Chairman Senate Ways and Means Committee
Representative Sylvia Luke, Chairman, House Finance Committee
Hawaii State Capitol
415 S. Beretania Street, Room 306
Honolulu, Hawaii 96813

Re: Grant Application from Weed and Seed Hawai'i, Inc. for Project Weed and Seed

My name is Florence Nakakuni and I have been involved with Weed and Seed from when I was U.S. Attorney for Hawaii, from September 2009-March 2017, to the present. I continue to be involved and support Weed and Seed because I believe in its mission and I believe it has served the community well for over 20 years, from approximately 1998, thanks to support from the community, the Legislature and the City. Weed and Seed brings people together and works collaboratively with private and public sector organizations to make sure our communities are safe and healthy for children, kupuna and families.

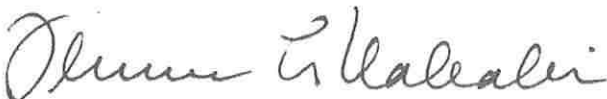
I am requesting your support for the submission of the proposal by Weed and Seed Hawai'i, Inc. to support the Weed and Seed Project in Kalihi-Palama-Chinatown-Ala Moana-Sheridan, Waipahu, and Ewa-Ewa Beach

Weed and Seed's partners include law enforcement, residents, non-profit organizations, community groups and private businesses that have helped to reduce violent and drug-related crimes in the community.

Weed and Seed is an important organizational tool and community resource which needs to be continued. Your continued support of this important initiative will ensure that community leaders and partners continue to build a strong network of committed citizens that will work toward preventing crime and growing strong, healthy communities.

I urge you to please support the request for the Weed and Seed Hawai'i, Inc. Grant-in-Aid.

Sincerely,



Florence Nakakuni
246 Halemaumau St.
Honolulu, HI 96821

January 18, 2022

Senator Donovan Dela Cruz, Chairman Senate Ways and Means Committee
Representative Sylvia Luke, Chairman, House Finance Committee
Hawaii State Capitol
415 S. Beretania Street, Room 306
Honolulu, Hawaii 96813

Re: Grant Application from Weed and Seed Hawai'i, Inc. for Project Weed and Seed

Aloha Chairs Dela Cruz and Luke.

My name is Michael Broderick and I am the former President & CEO of the YMCA of Honolulu and was involved with the Weed and Seed program for many years.

I am requesting your support for the submission of the proposal by Weed and Seed Hawai'i, Inc. to support the Weed and Seed Project in Kalihi-Palama-Chinatown-Ala Moana-Sheridan, Waipahu, and Ewa-Ewa Beach.

Weed and Seed is a collaborative effort involving law enforcement, residents, non-profit organizations, community groups and private businesses that have helped to reduce violent and drug-related crimes in various communities. When I was the Administrative Director of the Courts, and when I served as a Family Court Judge, I worked closely with Weed and Seed. I can vouch for their tremendous, and impactful, work.

Weed and Seed is an important organizational tool and community resource which needs to be continued. Your continued support of this important initiative will ensure that community leaders and partners continue to build a strong network of committed citizens that will work toward preventing crime and growing strong, healthy communities.

I urge you to support the request for the Weed and Seed Hawai'i, Inc. Grant-in-Aid.

Sincerely,



Michael Broderick
Broderick Dispute Resolution
info@broderickresolution.com

January 18, 2022

Senator Donovan Dela Cruz, Chairman Senate Ways and Means Committee
Representative Sylvia Luke, Chairman, House Finance Committee
Hawaii State Capitol
415 S. Beretania Street, Room 306
Honolulu, Hawaii 96813

Re: Grant Application from Weed and Seed Hawai'i, Inc. for Project Weed and Seed

My name is Michael K.S. Moses Sr. and I am a retired Honolulu Police Department Major and former commander of police District 8 (Ewa-Kapolei-Waianae) from 2006-2011, and I have been on the Board of Directors of Weed and Seed for past two years.

I am requesting your support for the submission of the proposal by Weed and Seed Hawai'i, Inc. to support the Weed and Seed Project in Kalihi-Palama-Chinatown-Ala Moana-Sheridan, Waipahu, and Ewa-Ewa Beach

Weed and Seed is a collaborative effort involving law enforcement, residents, non-profit organizations, community groups and private businesses that have helped to reduce violent and drug-related crimes in my community.

I humbly ask for your support of Weed and Seed for the following reasons:

- Weed and Seed is an important organizational tool and community resource which needs to be continued.
- Your continued support of this important initiative will ensure that community leaders and partners continue to build a strong network of committed citizens that will work toward preventing crime and growing strong, healthy communities.

I urge you to support the request for the Weed and Seed Hawai'i, Inc. Grant-in-Aid.

Sincerely,



Michael K.S. Moses Sr.
714 Pahumele Pl.
Kailua, HI 96734

January 18, 2022

Senator Donovan Dela Cruz, Chairman Senate Ways and Means Committee
Representative Sylvia Luke, Chairman, House Finance Committee
Hawaii State Capitol
415 S. Beretania Street, Room 306
Honolulu, Hawaii 96813

Re: Grant Application from Weed and Seed Hawai'i, Inc. for Project Weed and Seed

My name is Fumikazu Wayne Muraoka and I am a Honolulu Police Department Police Sergeant. I have been involved with Weed and Seed for approximately 19 years between 2003 and 2022.

I am requesting your support for the submission of the proposal by Weed and Seed Hawai'i, Inc. to support the Weed and Seed Project in Kalihi-Palama-Chinatown-Ala Moana-Sheridan, Waipahu, and Ewa-Ewa Beach

Weed and Seed is a collaborative effort involving law enforcement, residents, non-profit organizations, community groups and private businesses that have helped to reduce violent and drug-related crimes in my community.

I support Weed and Seed because during the 19 years of my involvement, the activities it has brought to life allowed me as a police officer to work with every category of community member in support of a positive direction for everyone to be involved in to combat crime and drugs (weeding) as well as improve quality of life (seeding) for the residents where I worked.

Our weeding activities were supported directly by the HPD Chief's Office, allowing us to work in collaboration with many city, state and federal law enforcement agencies as well as the Prosecutors Office to accomplish high end illegal drug enforcement in the local community. We were able to connect the dots involving low end drug activity to higher level trafficking and make arrests, one of which took off 11 lbs. of meth out of the Waianae/Ewa neighborhood. In addition to illegal drug enforcement, we worked directly with the residents to solve crime and problems affecting their areas that calling 911 could not address because they were more long term issues.

Our seeding activities also involved collaboration between schools, businesses, local agencies and volunteers from the community to provide numerous programs to the keiki such as an annual Summer Culinary Class, Junior Golf, Bowling, Surfing, etc. Involvement in these activities allowed me as a police

officer to make a positive connection with the kids and build life-long bonds with them, many of whom I still see in the community today. These programs provided life skills for many kids, teaching them to cook for themselves, make good use of their time and stay out of trouble, while their parents were out busy at work.

Gale Bracerros has been working tirelessly to keep some of the basic Weed and Seed functions alive with minimal support from the private sector in these difficult times, but more support is necessary from Hawaii to bring it back to what it was previously when it was alive in the community in both crime fighting and making positive differences and improvements.

Weed and Seed is an important organizational tool and community resource which needs to be continued. Your continued support of this important initiative will ensure that community leaders and partners continue to build a strong network of committed citizens that will work toward preventing crime and growing strong, healthy communities.

I urge you to support the request for the Weed and Seed Hawai'i, Inc. Grant-in-Aid.

Sincerely,



Sergeant Fumikazu Muraoka
Kapolei Police Station
1100 Kamokila Blvd
Kapolei, Hawaii 96707

January 20, 2022

Sergeant Anson "Kaipo" Paiva, Honolulu Police Department, District 3,
Community Policing Team

Re: Grant Application from Weed and Seed Hawai'i, Inc. for Weed and Seed
Hawai'i Project

My name is Anson "Kaipo" Paiva and I am the Sergeant for the District 3
Community Policing Team with the Honolulu Police Department. I have been
involved with Weed and Seed for almost 13 years. I have worked with Weed &
Seed as an Officer since 2010 and I was promoted to the rank of Sergeant of the
District 3 Community Policing Team in January 2021.

I am requesting your support for the submission of the proposal by Weed and
Seed Hawai'i, Inc. to support the Weed and Seed Project in Kalihi-Palama-
Chinatown-Ala Moana-Sheridan, Waipahu, and Ewa-Ewa Beach.

Weed and Seed is a collaborative effort involving law enforcement, residents,
non-profit organizations, community groups and private businesses that have
helped to reduce violent and drug-related crimes in my community.

I support Weed and Seed because they helped us build and strengthen
relationships in our community. I have been assigned to the District 3 Community
Policing Team since 2010. Prior to that I did not have any experience with Weed
& Seed or Community Policing. Community Policing is a component of the 21st
Century Policing model created by President Obama in 2016. You can find the
report here: https://cops.usdoj.gov/pdf/taskforce/taskforce_finalreport.pdf

The philosophy and success of community policing relies on the foundation of
law enforcement entities building and strengthening relationships with our
community. Law enforcement then works with the community to combine ideas
and resources and work together toward the common goal of reducing crime and
creating peace in our communities.

Weed & Seed Hawaii's value is not only in the stats that they provide, but the
hundreds and thousands of relationships they create between the community
and law enforcement. Not only has Weed & Seed Hawaii created relationships
between law enforcement and community they have also connected schools with
businesses, and businesses with communities.

Weed & Seed Hawaii's work is priceless. The results they produce on paper and
in stats are small in comparison to the heart and dedication that the Weed &
Seed Hawaii coordinators put in building communities of peace.

I am a testament to the work Weed & Seed Hawaii does in their community. Not only have they supported me in building more relationships in our community, but they have also opened my eyes and other police officers' eyes on the value of relationships with our community and how to work with our community toward the common goals of prosperity, safety and peace.

Through Weed & Seed Hawaii, I have learned to talk "with" people and not "to" them. Find solutions, not problems. Leverage relationships but do not take advantage of them. And most important, be resilient, and never give up.

I have seen firsthand what Weed & Seed Hawaii created in the last 12 years. I cannot predict what amazing results Weed & Seed Hawaii will produce in the next year, but I choose to support Weed & Seed Hawaii because I know what our community looks like without their work. The value in Weed & Seed Hawaii is not only about the results we can see on paper but the lives they have changed because of the continued relationships they have created. Weed & Seed Hawaii reveals the beauty in every community so much, I moved into the one I worked with so I could continue to be a part of the great changes. Weed & Seed Hawaii shows the community that you don't have to move to an "ideal" community, but how to create it with the one you already live in.

Weed and Seed is an important community resource which needs to be continued. Your continued support of this important initiative will ensure that community leaders and partners continue to build a strong network of committed citizens that will work toward preventing crime and growing strong, healthy communities.

I urge you to support Weed and Seed Hawaii by supporting their State GIA application.

Sincerely,



Sergeant Anson "Kaipo" Paiva
Honolulu Police Department
District 3 / Community Policing Team
Pearl City Police Station
1100 Waimano Home Rd.
Pearl City, HI. 96782

January 18, 2022

Senator Donovan Dela Cruz, Chairman Senate Ways and Means Committee
Representative Sylvia Luke, Chairman, House Finance Committee
Hawaii State Capitol
415 S. Beretania Street, Room 306
Honolulu, Hawaii 96813

Re: Grant Application from Weed and Seed Hawai'i, Inc. for Project Weed and Seed

My name is Frances Rivero a long time resident and supporter for the Weed and Seed initiative. I have been involved with Weed and Seed for over 15 years, and I support its every effort in making Ewa Beach a better place for our keiki to live and grow.

I am requesting your support for the submission of the proposal by Weed and Seed Hawai'i, Inc. to support the Weed and Seed Project in Kalihi-Palama-Chinatown-Ala Moana-Sheridan, Waipahu, and Ewa-Ewa Beach

Weed and Seed is a collaborative effort involving law enforcement, residents, non-profit organizations, community groups and private businesses that have helped to reduce violent and drug-related crimes in my community.

I believe part of the Weed and Seeds strategy in providing alternative programs for kids other than the street. Mentoring kids in various afterschool programs such as Boys and Girls Club and Ewa Makai school to mention a few they give kids opportunity to learn valued life skills; as Junior Golf program, Junior Bowling, Health two Ocean a water safety program and soon to be a health and fitness program. Kids who have never had the experience or the opportunity to learn these skills may never be able to throughout their childhood if not for Weed and Seed.

Weed and Seed is an important organizational tool and community resource which needs to be continued. Your continued support of this important initiative will ensure that community leaders and partners continue to build a strong network of committed citizens that will work toward preventing crime and growing strong, healthy communities.

I urge you to support the request for the Weed and Seed Hawai'i, Inc. Grant-in-Aid.

Sincerely,

Frances Rivero, community



First Hawaiian Bank

Haleiwa Branch

January 20, 2022

Senator Donovan Dela Cruz, Chairman Senate Ways and Means Committee
Representative Sylvia Luke, Chairman, House Finance Committee
Hawaii State Capitol
415 S. Beretania Street, Room 306
Honolulu, Hawaii 96813

Re: Grant Application from Weed and Seed Hawai'i, Inc. for Project Weed and Seed

My name is Anna Kobashigawa and I am a branch manager at First Hawaiian Bank Ward Branch. I have been involved with Weed and Seed for 9 years.

I am requesting your support for the submission of the proposal by Weed and Seed Hawai'i, Inc. to support the Weed and Seed Project in Kalihi-Palama-Chinatown-Ala Moana-Sheridan, Waipahu, and Ewa-Ewa Beach

Weed and Seed is a collaborative effort involving law enforcement, residents, non-profit organizations, community groups and private businesses that have helped to reduce violent and drug-related crimes in my community.

I have personally seen improvement in the Ewa Beach community as a result of Weed & Seed's neighborhood restoration and clean ups. The condition of the neighborhood impacts the behavior of residents. Well maintained public area hold residents to a higher standard and builds community pride.

Weed and Seed is an important organizational tool and community resource which needs to be continued. Your continued support of this important initiative will ensure that community leaders and partners continue to build a strong network of committed citizens that will work toward preventing crime and growing strong, healthy communities.

I urge you to support the request for the Weed and Seed Hawai'i, Inc. Grant-in-Aid.

Sincerely,

Anna M. Kobashigawa
Assistant Vice President & Branch Manager
250 Ward Avenue, Suite 140
Honolulu HI 96814

P: (808) 593-9948
Email: akobashigawa@fhb.com

January 19, 2022

Senator Donovan Dela Cruz, Chairman Senate Ways and Means Committee

Representative Sylvia Luke, Chairman Finance Committee

Hawaii State Capitol

415 S Beretania Street, Room 306

Honolulu, Hawaii, 96813

Re: Grant Application for Weed and Seed Hawaii Inc. for Project Weed and Seed

My name is Maile Kanemaru and I am on the Board of Directors of Weed and Seed Hawaii, Inc. I have been involved with Weed and Seed since 1998, or 34 years.

I am requesting your support for the submission of the proposal by Weed and Seed Hawaii, Inc, to support the Weed and Seed Project in Kalihi-Palama-Chinatown-Ala Moana-Sheridan, Waipahu and Ewa-Ewa Beach.

Weed and Seed is a collaborative effort involving law enforcement, residents, non-profit organizations, community groups and non-profit organizations, community organizations, community groups, and private businesses that have helped to reduce violent and drug-related crimes in the three community.

I support Weed and Seed because I have seen the communities dramatically improve over the years. Residents are getting involved in community activities, participate in clean up of the parks and graffiti and supporting the schools in their neighborhoods. Businesses have provided funding for youth activities. The police officers participating with the youth in activities such as bowling, golf, culinary arts classes, fishing, and surfing has created a true trust relationship and excellent process of prevention of youth getting into crimes.

This is a very worthwhile project that is building community and teaching stakeholders to take care of each other. As law enforcement work with the youth and stakeholders, they develop a true partnership in improving their community. Leadership skills have been learned and now they are empowered to make decisions best for everyone.

I urge you to support the request for Weed and Seed Hawaii, Inc. Grant-in-Aid

Sincerely,

A handwritten signature in cursive script that reads "Maile Kanemaru".

Maile Kanemaru

Jan. 19, 2022

Senator Donovan Dela Cruz, Chairman, Senate Ways and Means Committee
Representative Sylvia Luke, Chairman, House Finance Committee
Hawaii State Capitol
415 S. Beretania Street, Room 306
Honolulu, Hawaii 96813

RE: Grant Request for Project Weed and Seed

Aloha! My name is Jon Yoshimura and I serve on the Weed and Seed Hawai'i Board of Directors. I got involved with Weed and Seed when it was first established in the late 1990s as a federally funded program under the US Attorney's Office, during my term as a Honolulu City Councilmember.

I am requesting your support for Weed and Seed Hawai'i, Inc's grant request for funds to continue its programs in the Kalihi-Palama-Chinatown-Ala Moana-Sheridan, Waipahu, and Ewa-Ewa Beach areas.

Weed and Seed is a collaborative effort involving the Honolulu Police Department, the Honolulu Prosecutor's Office, residents, non-profit organizations, community groups and private businesses. This partnership has reduced violent and drug-related crimes on Oahu.

Your support of this important initiative will ensure that Weed and Seed has the resources to sustain a strong network of stakeholders committed to preventing crime and growing strong, healthy communities.

I humbly ask you to support the grant request made by Weed and Seed Hawai'i, Inc.

Sincerely,

Jon C. Yoshimura

Jon C. Yoshimura
91-287A Ewa Beach Road
Ewa Beach, HI 96706



Building Relationships that Last

Office: 1165 Bethel Street, 2nd floor, Honolulu, HI 96813
Mailing: P.O. Box 38078, Honolulu, Hawaii 96837-1078
Tel: (808) 539-9777 ♦ Fax: (808) 521-2714

January 18, 2022

Senator Donovan Dela Cruz, Chairman Senate Ways and Means Committee
Representative Sylvia Luke, Chairman, House Finance Committee
Hawaii State Capitol
415 S. Beretania Street, Room 306
Honolulu, Hawaii 96813

Re: Grant Application from Weed and Seed Hawai'i, Inc. for Project Weed and Seed

My name is Kanani Kaopua. I am Vice President/Sr. Property Manager for Hawaiian Properties, Ltd. and have been involved with Weed and Seed Chinatown for four (4) years.

I am requesting your support for the submission of the proposal by Weed and Seed Hawai'i, Inc. to support the Weed and Seed Project in Kalihi-Palama-Chinatown-Ala Moana-Sheridan, Waipahu, and Ewa-Ewa Beach.

Weed and Seed is a collaborative effort involving law enforcement, residents, non-profit organizations, community groups and private businesses that have helped to reduce violent and drug-related crimes in my community.

I support Weed and Seed because this organization strives to seek out the root cause of the issues impacting residents and business owners, but more importantly, our keiki. The community programs and outreach from HPD and community volunteers are measurable through the success of each child involved in Weed and Seed programs. Something as simple as an after-school program provides keiki with a safe place to gather, enjoy time with their peers, seek out emotional support of volunteers, which directly impacts their overall mental health and ability to be a future contributing member of society.

Weed and Seed is an important organizational tool and community resource which needs to be continued. Your continued support of this important initiative will ensure that community leaders and partners continue to build a strong network of committed citizens that will work toward preventing crime and growing strong, healthy communities.

I urge you to support the request for the Weed and Seed Hawai'i, Inc. Grant-in-Aid.

Sincerely,

Kanani Kaopua, PCAM®
Vice President / Sr. Property Manager
Phone: 808-539-9501
E-mail: kananik@hawaiianprop.com
1165 Bethel Street, 2nd Floor
Honolulu, HI. 96813



Building Relationships that Last



CHINATOWN BUSINESS & COMMUNITY ASSOCIATION

1039 Kekaulike St St #A202 Honolulu Hawaii 96817

Tel: 808-391-4350

clskwock@gmail.com

President

Chu Lan Shubert-Kwock

Vice President

David Chang

First Vice President

Dolores Moltrng

Secretary

Stanley Oswald

Michael Young

Treasurer

Dolores Moltrng

Public Affairs

Karl Kao

Community Outreach

Ernie Loo

Security

Steve Matsuda

Culture

Ernie Loo

Membership:

Chu Lan Shubert-Kwock

Directors

Angela Chang

Ivy Yueng

Ryan Akamine

John Thippavong

Ernie Loo

Karl Kao

Rev. Duane Pang

Kimo Rodney Wong

Gretchen Jong

Susan Wong

Rene Mansho

Ken Akanaka

Stan Oswald

Stanley Yon

Rose Mary Thompson

Stanford Yuen

Sharon L. Pang

Senior Advisors

Joe Leoni

Harris Nakamoto

Duc Ngyuen

Frank Law

Dr. Kin Ming Ching

January 19, 2022

Senator Donovan Dela Cruz, Chair, Senate Ways & Means

Representative Sylvia Luke, Chair, House Finance Committee

415 S. Beretania Street, Room 306 Honolulu, Hawaii 96813

**RE: GRANT APPLICATION FROM WEED & SEED, HAWAII, INC.
FOR PROJECT WEED & SEED**

Dear Chairs Dela Cruz and Luke

Please approve needed funding for Weed & Seed, Inc which has been active in Waipahu and Ewa and Kalihi but are coming back to Chinatown to assist our youth with the Prosecutor's Office as well as with HPD.

We sorely need their involvement to help these kids with their programs as many of these kids need a strong program to lead them back to lawfulness and become an asset to their community.

CBCA partnered with HPD in the past with these kids in our program " Help our Neighborhood Kids" for 4 years until the program was yanked, but now that our City Council has approved the reinstatement of funds but that is not enough so we ask that the State kicks in some funding for these Weed and Seed programs.

I have faith in the leadership of Gail Bracerros, its Director and her team of dedicated staff because I have known and worked with Gail for over 20 years. Weed & Seed is an important partner to HPD and now our Prosecutor's office. They help reduce vagrancy, drug use reduction of petty crime from our neighborhood kids especially those in State and City housing and are recent immigrants trying to fit in but with very little parental guidance. Many of these kids already have a police record but with the help and outreach from Weed & Seed we hope to redirect the energies of our kids in a positive way so they can thrive and become productive adults.

Chu Lan Shubert-Kwock
President, CBCA



FOR YOUTH DEVELOPMENT[®]
FOR HEALTHY LIVING
FOR SOCIAL RESPONSIBILITY

January 18, 2022

Senator Donovan Dela Cruz, Chairman Senate Ways and Means Committee
Representative Sylvia Luke, Chairman, House Finance Committee
Hawaii State Capitol
415 S. Beretania Street, Room 306
Honolulu, Hawaii 96813

Re: Grant Application from Weed and Seed Hawai'i, Inc. for Project Weed and Seed

My name is Diane Tabangay. I am a youth program administrator with the YMCA of Honolulu and have worked collaboratively with Weed and Seed Hawaii since 2007.

I am requesting your support for the submission of the proposal by Weed and Seed Hawai'i, Inc. to support the Weed and Seed Project in Kalihi-Palama-Chinatown-Ala Moana-Sheridan, Waipahu, and Ewa-Ewa Beach

Weed and Seed is a collaborative effort involving law enforcement, residents, non-profit organizations, community groups and private businesses that have helped to reduce violent and drug-related crimes in my community.

Weed and Seed Hawai'i provides the leadership and coordination that is needed to mobilize community engagement, at all levels, and to effectively implement programs/services and initiatives that respond to authentic issues of concerns. Through my work with Gale Braceros and Lorrie Kanno I have witnessed first-hand the positive impact Weed and Seed community-led programs have on the most vulnerable youth, and the pride and commitment to the health and safety of their community that is demonstrated by residents of all ages.

Weed and Seed is an important organizational tool and community resource which needs to be continued. Your continued support of this important initiative will ensure that community leaders and partners continue to build a strong network of committed citizens that will work toward preventing crime and growing strong, healthy communities.

I urge you to support the request for the Weed and Seed Hawai'i, Inc. Grant-in-Aid, and thank you for this opportunity to express my support for such a valuable and greatly needed community resource.

Sincerely,

Diane Tabangay, Executive Director – Youth Development
dtabangay@ymcahonolulu.org

DEPARTMENT OF PARKS & RECREATION
CITY AND COUNTY OF HONOLULU

1000 Uuohia Street, Suite 309, Kapolei, Hawaii 96707
Phone (808) 768-3003 • Fax: (808) 768-3053
Website: www.honolulu.gov

RICK BLANGIARDI
MAYOR



LAURA H. THIELEN
DIRECTOR

KEHAULANI PU'U
DEPUTY DIRECTOR

January 18, 2022

Senator Donovan Dela Cruz, Senate Ways and Means Committee Chair
Representative Sylvia Luke, House Finance Chair

RE: State GIA - Weed and Seed Hawaii, Inc.

My name is Gayleen Balais and I am a Recreation Director with the Project Ho'omana Program under the City and County of Honolulu Department of Parks and Recreation, which provides services to the youth Weed and Seed Hawai'i and the HPD District 3 CPT Officers for 22 years.

I support Weed and Seed Hawai'i because they have been an integral part in making the Waipahu community a better and safer community for our youth, adult and seniors to live. They have afforded our community residents with various resources to better enrich their lives and daily living. They understand the "needs" of the community and thus, has created a very strong working relationship/partnership with various community groups, businesses and organizations. Project Ho'omana has been very fortunate to have been working with Weed and Seed Hawai'i for 22 years. Their support and resources to my program have been innumerable and beneficial to all individuals in our program. My partnership with Weed and Seed Hawai'i has been a blessing to myself on a professional and personal level. Not only do I work in the Waipahu community, I am also a proud resident of the Waipahu community. Through their efforts, I have seen many positive changes and am very happy that the Waipahu community has been provided with such a rich community resource like Weed and Seed Hawai'i.

Weed and Seed is an important community resource which needs to be continued. Your continued support of this important initiative will ensure that community leaders and partners continue to build a strong network of committed citizens that will work toward preventing crime and growing strong, healthy communities.

I urge you to support Weed and Seed Hawaii by supporting their State GIA application.

Sincerely,

A handwritten signature in black ink, appearing to read "Gayleen Balais".

Gayleen Balais
Recreation Director, Dept. of Parks & Recreation
94-230 Paiwa Street, Waipahu HI 96797



January 19, 2022

The Honorable Donovan Dela Cruz, Chair
Senate Committee on Ways and Means
The Honorable Sylvia Luke, Chair
House Committee on Finance
Hawaii State Senate
State Capitol
Honolulu, Hawaii 96813

RE: SUPPORT OF WEED AND SEED HAWAII'S GRANT-IN-AID REQUEST

Dear Chairs Dela Cruz and Luke:

My name is Debbie Luning, Community Relations Director for Gentry Homes and a member of the Ewa Weed and Seed Steering Committee. I am testifying in **strong support** of the Grant-In-Aid request submitted by Weed & Seed Hawaii to maintain and expand the Weed & Seed strategy.

As the developer of a residential community within the Ewa Weed and Seed site, Gentry is very supportive of continued funding for the Weed and Seed program. We have been active participants in the collaborative effort involving law enforcement, citizens, non-profit organizations, social service agencies, community groups and private businesses (such as ours) and are pleased that Ewa is undergoing a positive transformation. Violent and drug-related crimes have been reduced substantially, large drug dealers have been "weeded out" and "seeding" programs have been implemented for families and youth. These programs include youth activities, such as junior golf, ocean sports, summer culinary arts classes, health and fitness programs, and more.

Weed and Seed is a lean program that, in spite of the small staff, makes a huge impact on the communities it serves because of the staff's commitment and the effective partnerships that have been forged. We need more programs like Weed and Seed. Please support its grant-in-aid request.

Sincerely,

GENTRY HOMES, LTD.

A handwritten signature in blue ink, appearing to read 'D. Luning'.

Debra M. A. Luning
Director of Governmental Affairs and
Community Relations

January 19, 2022

Senator Donovan Dela Cruz, Chairman Senate Ways and Means Committee
Representative Sylvia Luke, Chairman, House Finance Committee
Hawaii State Capitol
415 S. Beretania Street, Room 306
Honolulu, Hawaii 96813

Re: Grant Application from Weed and Seed Hawai'i, Inc. for Project Weed and Seed

My name is Christopher D. Bonilla, and I am the school principal of Ilima Intermediate School in Ewa Beach, Hawaii. I have been involved with Weed and Seed Executive Director Gale Bracerros for six years.

I am requesting your support for the submission of the proposal by Weed and Seed Hawai'i, Inc. to support the Weed and Seed Project in Kalihi-Palama-Chinatown-Ala Moana-Sheridan, Waipahu, and Ewa-Ewa Beach

Weed and Seed is a collaborative effort involving law enforcement, residents, non-profit organizations, community groups and private businesses that have helped to reduce violent and drug-related crimes in my community.

I support Weed and Seed because their support has provided our school with important resources with school and community safety. Because of our partnership, our students feel safe walking to school due to their emphasis on traffic safety. Our various traffic safety sign-waving events positively impact our school and the community. Weed and Seed has also volunteered their time during our Career Days as our HPD Weed and Seed partners share necessary skills required to serve in law enforcement.

Weed and Seed is an important organizational tool and community resource which needs to be continued. Your continued support of this important initiative will ensure that community leaders and partners continue to build a strong network of committed citizens that will work toward preventing crime and growing strong, healthy communities.

I urge you to support the request for the Weed and Seed Hawai'i, Inc. Grant-in-Aid.

Sincerely,



Christopher D. Bonilla, Principal
Ilima Intermediate School
91-884 Fort Weaver Road
Ewa Beach, HI 96706



STATE OF HAWAII
DEPARTMENT OF EDUCATION
KEONE'ULA ELEMENTARY SCHOOL
91-970 KAILEOLEA DRIVE
EWA BEACH, HAWAII 96706
PHONE (808) 307-2100
FAX (808) 689-1395

January 19, 2022

Senator Donovan Dela Cruz, Chairman Senate Ways and Means Committee
Representative Sylvia Luke, Chairman, House Finance Committee
Hawaii State Capitol
415 S. Beretania Street, Room 306
Honolulu, Hawaii 96813

Re: Grant Application from Weed and Seed Hawai'i, Inc. for Project Weed and Seed

My name is Paul Taga and I am the principal of Keone'ula Elementary School in Ewa Beach, but I also served as principal of Waipahu Elementary School from 2006 to 2015. I have been involved with Weed and Seed as a volunteer, a partner, and advocate for the past 16 years, and believe wholeheartedly in the positive change this organization has created in our communities.

Weed and Seed is a collaborative effort involving law enforcement, residents, non-profit organizations, community groups and private businesses that have helped to reduce violent and drug-related crimes in our community. It is an important organizational tool and community resource which needs to continue. Your support of this grant application will ensure that community leaders and partners continue to build a strong network of committed citizens that will work toward preventing crime and growing strong, healthy communities.

I support Weed and Seed because I have personally witnessed how this effort has made a difference in people's lives not only here in Ewa Beach, but also in Waipahu. I believe it would be a tremendous hardship for these communities to lose the much needed support and services that Weed and Seed provides, and the progress that has been made to empower people in these areas would be lost without the resources Weed and Seed Hawaii would be provided through this grant.

For many years Weed and Seed Hawaii has had to balance the hard work they do in each community with constant efforts to seek funding from a variety of sources to continue its operations. I am requesting your support for the submission of the proposal by Weed and Seed Hawai'i, Inc. to support the Weed and Seed Project in Kalihi-Palama-Chinatown-Ala Moana-Sheridan, Waipahu, and Ewa-Ewa Beach

I urge you to support the request for the Weed and Seed Hawai'i, Inc. Grant-in-Aid.

Sincerely,

A handwritten signature in black ink, appearing to read "Paul S. Taga".

Paul S. Taga
Principal



STATE OF HAWAII
DEPARTMENT OF EDUCATION
EWA BEACH ELEMENTARY SCHOOL
91-740 PAPIPI ROAD EWA BEACH, HAWAII 96706
808-307-2300

January 18, 2022

Senator Donovan Dela Cruz, Chairman Senate Ways and Means Committee
Representative Sylvia Luke, Chairman, House Finance Committee
Hawaii State Capitol
415 S. Beretania Street, Room 306
Honolulu, Hawaii 96813

Re: Grant Application from Weed and Seed Hawai'i, Inc. for Project Weed and Seed

My name is Shayne Greenland, I am the Principal at Ewa Beach Elementary School. I have been involved with Weed and Seed Hawai'i for the past eight years. While I was a Vice Principal at James Campbell High School, the Weed and Seed Program assisted the school in a variety of ways. They organized and supported our efforts to combat the various situations regarding drugs, alcohol and fights at the Ewa Beach Community Park. They worked closely with myself and other administrators to mediate potential harmful situations with students and families on campus that escalated from physical altercations on campus and in our community. They have also been involved in many positive programs such as the summer programs involving the Junior golf program, cooking at JCHS and various community clean ups and sign wavings. Weed and Seed has also played a vital role in keeping our school campus safe. They have on numerous occasions responded to a trespassing incident and by already knowing the individual, they were able to remove the individual and/or individuals without any incidents. This program is very beneficial and beyond measure. It would be a disservice to our community to not fully fund and continue the time and dedication that they have truly invested.

I along with the teachers and staff at Ewa Beach Elementary School fully support our Weed and Seed Hawai'i Program. Weed and Seed Hawai'i recognizes that in order for youth to avoid a life of criminality, the youth needs to co-exist in a community that is thriving. Weed and Seed Hawai'i and the HPD District 8 CPT officers have been critical in providing.

Thank you in advance for your consideration of keeping this program intact and providing the funding necessary for its success.

Sincerely,

Shayne Greenland

Shayne Greenland - Principal

January 19, 2022

Senator Donovan Dela Cruz, Senate Ways and Means Committee Chair
Representative Sylvia Luke, House Finance Chair

RE: State GIA - Weed and Seed Hawaii, Inc.

Aloha! My name is Barbara Tom and I am a retired Registered Nurse. I have been involved with Weed and Seed for 19 years and currently serve on its Steering Committee. I am also the Director of the Waipahu Safe Haven Immigrant/Migrant Center.

I support Weed and Seed because they have been a key component to reducing crime rates in Waipahu. Their approach of attacking crime through prevention via education in the schools and community is one that I am personally involved with as a volunteer.

The Waipahu Safe Haven Immigrant and Migrant Center was created as a way for students to complete their homework with assistance from volunteer tutors from the community. Its creation was supported by Weed & Seed through collaboration with Waipahu Community Coalition, Waipahu Community Association, Parents and Children Together, the DOE's ESL Leeward District, Americorp/Vista, and the Steering Committee members from the community, and the West Oahu Christian Church. In addition to student education, the center also provides education for limited English-speaking adults through adult education as well as digital literacy in hopes of getting them jobs. Additionally, it also provides limited English-speaking women with the opportunity to improve their economic situation through learning how to sew. These innovative approaches to prevention in the community are all helping to decrease the crime rate as it provides education to an extremely needy population.

Weed and Seed is an important community resource which needs to be continued. Your continued support of this important initiative will ensure that community leaders and partners continue to build a strong network of committed citizens that will work toward preventing crime and growing strong, healthy communities.

I urge you to support Weed and Seed Hawaii by supporting their State GIA application.

Sincerely,



Barbara Tom RN
Director
Waipahu Safe Haven Immigrant/Migrant Resource Center

January 19, 2022

Senator Donovan Dela Cruz, Senate Ways and Means Committee Chair
Representative Sylvia Luke, House Finance Chair

RE: State GIA - Weed and Seed Hawaii, Inc.

My name is Gale Mejia and I am a member of the Waipahu Steering Committee. I have been involved with Weed and Seed for the past 12 years.


Weed and Seed has made a significant difference in the Waipahu community in the following ways:

- 1) Providing the RAP program at Waipahu and Honowai Elementary Schools that help students make good decisions.
- 2) Mentoring high school students at Waipahu High School through the Na Alaka'i student club to reach out to fellow students in need.
- 3) Supporting safe communities through community policing groups.
- 4) Supporting beautification events that engage community members, both young and old, to take pride in our community.
- 5) Providing consultation and manpower to support family-oriented events such as the annual Christmas Carnival and Song Festival at the Waipahu Town Center, as well as the Town Hall on Underage Drinking and Drug Use and 'Ohana Bingo Night.

Weed and Seed is an important community resource which needs to be continued. Your continued support of this important initiative will ensure that community leaders and partners continue to build a strong network of committed citizens that will work toward preventing crime and growing strong, healthy communities.

I urge you to support Weed and Seed Hawaii by supporting their State GIA application.

Sincerely,



Gale Mejia

January 18, 2022

Senator Donovan Dela Cruz, Senate Ways and Means Committee Chair
Representative Sylvia Luke, House Finance Chair

RE: State GIA - Weed and Seed Hawaii, Inc.

Aloha! My name is Rochelle Kalili, a former resident of Waipahu and member of the Waipahu Steering Committee. I have been involved with Weed and Seed for the past 12 years.

I am requesting your support for the submission of the proposal by Weed and Seed Hawaii, Inc. to support the Weed and Seed project in Kalihi-Palama-Chinatown-Ala Moana-Sheridan, Waipahu, and Ewa-Ewa Beach.

As a parent-community facilitator at an area elementary school, I have seen the improvement in the way our students/children relate to police officers. In the past, many of our children viewed officers as aggressive people who only caused harm to their 'ohana. Through the partnerships that Weed and Seed Hawai'i and the HPD District 3 CPT officers have created, **it has changed their views.** They now see police officers as people who are looking out for their best interests; people they can trust. Weed and Seed Hawai'i has educated individuals on how drugs and other negative influences ruin families and community. **Weed and Seed Hawai'i has empowered residents to take back their community.** The residents are no longer afraid to call 9-1-1 to ask for help. As the saying goes, "Ohana means no one is left behind." I believe that because of Weed and Seed Hawai'i, no one in Waipahu is left behind.

Weed and Seed is an important community resource which needs to be continued. Your continued support of this important initiative will ensure that community leaders and partners continue to build a strong network of committed citizens that will work toward preventing crime and growing strong, healthy communities.

I urge you to support Weed and Seed Hawaii by supporting their State GIA application.
positive activities for youth that will keep them on the right track and help families to thrive.

Sincerely,


Rochelle Kalili