

Application Submittal Checklist

The following items are required for submittal of the grant application. Please verify and check off that the items have been included in the application packet.

- 1) Certificate of Good Standing (If the Applicant is an Organization)
- 2) Declaration Statement
- 3) Verify that grant shall be used for a public purpose
- 4) Background and Summary
- 5) Service Summary and Outcomes
- 6) Budget
 - a) Budget request by source of funds ([Link](#))
 - b) Personnel salaries and wages ([Link](#))
 - c) Equipment and motor vehicles ([Link](#))
 - d) Capital project details ([Link](#))
 - e) Government contracts, grants, and grants in aid ([Link](#))
- 7) Experience and Capability
- 8) Personnel: Project Organization and Staffing


AUTHORIZED SIGNATURE

Nick Riznyk, Treasurer
PRINT NAME AND TITLE

1/15/22
DATE

**THE THIRTIETH LEGISLATURE
APPLICATION FOR GRANTS
CHAPTER 42F, HAWAII REVISED STATUTES**

Type of Grant Request:

Operating Capital

Legal Name of Requesting Organization or Individual: Db:

Recycle Hawaii

Amount of State Funds Requested: \$ 359,600.00

Brief Description of Request (Please attach word document to back of page if extra space is needed):

Request is for desperately needed equipment and vehicles to help build Hawai'i Island's rural recycling infrastructure network. These tools are necessary to create a Mobile Recovery Center (MRC), and sustain increasing volumes and demand for recycling by the community, small business, and farms. The request also goes far to help automate, to reduce heavy labor, to reduce lifting and risk of injury to committed employees and volunteers diverting recycling away from our one island landfill. This request would sustain current recycling demand, and be able to meet growth over the next 5 years. Mahalo for your consideration.

Amount of Other Funds Available:

State: \$ 359,600.00

Federal: \$ _____

County: \$ _____

Private/Other: \$ 70,000.00

Total amount of State Grants Received in the Past 5 Fiscal Years:

\$ 259,200.00

Unrestricted Assets:

\$ _____

New Service (Presently Does Not Exist): Existing Service (Presently in Operation):

Type of Business Entity:

- 501(C)(3) Non Profit Corporation
- Other Non Profit
- Other

Mailing Address:

PO Box 4847

City:

State:

Zip:

Hilo

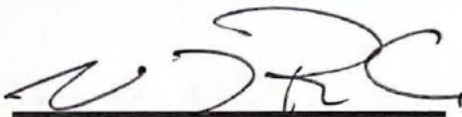
HI

96720

Contact Person for Matters Involving this Application

Name: Nick Riznyk	Title: Treasurer
Email: Nickriznyk@gmail.com	Phone: 808-987-8804

Federal Tax ID#: [REDACTED]	State Tax ID# [REDACTED]
--------------------------------	-----------------------------



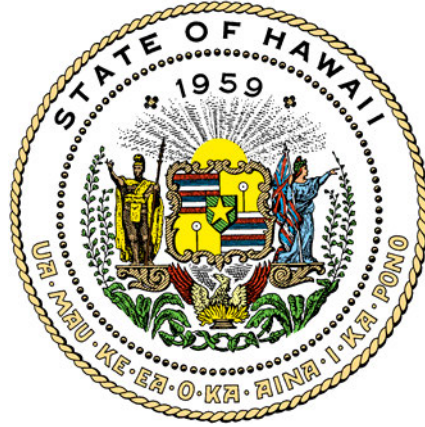
Authorized Signature

Nicholas Riznyk, Treasurer

Name and Title

1/21/22

Date Signed



Department of Commerce and Consumer Affairs

CERTIFICATE OF GOOD STANDING

I, the undersigned Director of Commerce and Consumer Affairs of the State of Hawaii, do hereby certify that

RECYCLE HAWAII

was incorporated under the laws of Hawaii on 02/24/1992 ; that it is an existing nonprofit corporation; and that, as far as the records of this Department reveal, has complied with all of the provisions of the Hawaii Nonprofit Corporations Act, regulating domestic nonprofit corporations.

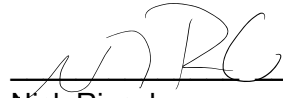


IN WITNESS WHEREOF, I have hereunto set my hand and affixed the seal of the Department of Commerce and Consumer Affairs, at Honolulu, Hawaii.

Dated: January 20, 2022

Director of Commerce and Consumer Affairs

Recycle Hawaii hereby verifies that any and all funding awarded to our 501(c)3 non-profit organization by the State of Hawaii through its Grants-in-Aid program will be used for public purpose pursuant to Section 42F-102 Hawaii Revised Statutes.



Nick Riznyk
Treasurer

1/15/22

Date

**DECLARATION STATEMENT OF
APPLICANTS FOR GRANTS PURSUANT TO
CHAPTER 42F, HAWAI'I REVISED STATUTES**

The undersigned authorized representative of the applicant certifies the following:

- 1) The applicant meets and will comply with all of the following standards for the award of grants pursuant to Section 42F-103, Hawai'i Revised Statutes:
 - a) Is licensed or accredited, in accordance with federal, state, or county statutes, rules, or ordinances, to conduct the activities or provide the services for which a grant is awarded;
 - b) Complies with all applicable federal and state laws prohibiting discrimination against any person on the basis of race, color, national origin, religion, creed, sex, age, sexual orientation, or disability;
 - c) Agrees not to use state funds for entertainment or lobbying activities; and
 - d) Allows the state agency to which funds for the grant were appropriated for expenditure, legislative committees and their staff, and the auditor full access to their records, reports, files, and other related documents and information for purposes of monitoring, measuring the effectiveness, and ensuring the proper expenditure of the grant.

- 2) If the applicant is an organization, the applicant meets the following requirements pursuant to Section 42F-103, Hawai'i Revised Statutes:
 - a) Is incorporated under the laws of the State; and
 - b) Has bylaws or policies that describe the manner in which the activities or services for which a grant is awarded shall be conducted or provided.

- 3) If the applicant is a non-profit organization, it meets the following requirements pursuant to Section 42F-103, Hawai'i Revised Statutes:
 - a) Is determined and designated to be a non-profit organization by the Internal Revenue Service; and
 - b) Has a governing board whose members have no material conflict of interest and serve without compensation.

Pursuant to Section 42F-103, Hawai'i Revised Statutes, for grants used for the acquisition of land, when the organization discontinues the activities or services on the land acquired for which the grant was awarded and disposes of the land in fee simple or by lease, the organization shall negotiate with the expending agency for a lump sum or installment repayment to the State of the amount of the grant used for the acquisition of the land.

Further, the undersigned authorized representative certifies that this statement is true and correct to the best of the applicant's knowledge.

Recycle Hawai'i

(Typed Name of Individual or Organization)



(Signature)

1/15/22

(Date)

Nick Riznyk

1/15/22

(Typed Name)

(Title)

Recycle Hawai'i

State GIA Grant Narrative 2022

BACKGROUND AND SUMMARY

Hawai'i Island is the largest of the archipelago's eight major islands and the least densely populated. The state of Hawai'i has about 1.5 million residents, but just 200,629 live on the furthest south of the "neighbor islands." Hawai'i Island is challenged by rural infrastructure, extremely high business, transportation, supply, and labor costs. Housing prices rival California Bay-area real estate, requiring most residents to hold multiple jobs while struggling to obtain social services that are both intermittent and underfunded. Economic focus on extractive tourism rather than local economic development has resulted in Hawai'i's Native population to be chronically underserved with severe lack of access to healthcare and education. On top of all these challenges, Hawai'i is the most isolated archipelago in the world, requiring shipment of goods and supplies 2,500 miles across the open Pacific ocean.

Very little materials recovery, recycling, and reuse infrastructure exists on Hawai'i island. In October 2019, Hawai'i County further reduced their already rudimentary recycling program to accept only self-haul corrugated cardboard and glass. This rollback came on the heels of earlier restrictions that ended the collection of aluminum and various grades of plastic. In December 2019, Hawai'i Island went from two landfills to just one. With the closure of the South Hilo Sanitary Landfill, the 575 tons per day of waste from the entire island is now hauled to just one landfill (Recycle Hawai'i, 2008). Trucks hauling waste hundreds of miles a day has significantly increased the greenhouse gas footprint and cost of Hawai'i County's waste management operations. The cost to the taxpayer is an estimated \$342/ton yet many of the currently landfilled materials are recyclable (Hawai'i County, 2021).

As Hawai'i Island residents face both local waste and global climate crises, Recycle Hawai'i is returning to its roots to implement innovative activities for transforming the county's current waste management approach into a functional, climate-conscious, resource-recovery model readily adaptable by island communities everywhere. High recycling costs, environmental hazards, and minimal existing infrastructure have led Recycle Hawai'i to consider an alternative for recycling in Hawai'i County.

There is an opportunity to create community-based, mobile recycling infrastructure in the form of Mobile Recovery Centers (MRCs). These low-cost MRC's have been successful in other regions of the world, and create channels for valuable resources to be diverted away from landfills and decrease associated costs; a true waste-to-wealth wealth concept. Recycling #1

and #2 plastics are the most financially viable materials to recycle, therefore this project will focus on the community, economic, and logistical feasibility of a pilot mobile resource recovery program in South Kona. A new recycling system can catalyze economic opportunity, lower the total emissions footprint, and create direct benefits for the Hawai'i Island community.

GOALS AND OBJECTIVES

After completing a project plan and a commitment from local recycling companies, we believe we have the pieces in place to aggregate community members and resources behind a solid concept. Project goals will focus on building community and technological capacity to accept clean-stream, source-separated materials from a commercial and residential network, and stage monthly resource recovery days:

Goal 1: Build social capital with businesses and neighborhoods in South Kona with high potential to contribute materials to the recovery program, an area where there is essentially no access to recovery programs.

Goal 2: Aggregate donated equipment from Atlas Recycling and purchase new equipment outlined in the budget request.

Goal 3: In collaboration with Circle Pack HI, which holds cardboard recovery community events, create shareable materials outlining the need to recover resources and a social media campaign to attract community involvement.

Goal 4: Demonstrate a clean-stream, source-separated Mobile Recovery Center (MRC) model for North and South Kona to prove that a low-investment, low-tech model can create a high output of recyclables compared to a traditional \$20M MRF investment.

Goal 5: Provide services to small and medium-sized businesses and Hawai'i residents that are in dire need of recycling programs, leading the pathway towards a diversion of 60% of waste created by these entities.

Goal 6: Reach 20 tonnes diversion per month by the end of the pilot period, a rate that would allow for 240/ton diversion per year equivalent. If sustained, this would lead to a minimum of \$82,000 in direct savings for landfill tipping and hauling on top of revenue income from recyclables generated, reduced carbon emissions, and community value.

PUBLIC PURPOSE AND NEED TO BE SERVED

Hawai'i Island residents and businesses have little to no opportunity to recycle and divert tons of resources destined to our single island landfill. Creating a low-cost, high-production solution for materials recovery, gives the Hawai'i Island community a channel to divert valuable commodities from the landfill, saving thousands of dollars in taxpayer costs as a result. Moreover, proving the MRC concept, allows for additional MRCs to be integrated and scale Hawai'i Island diversion, and create new green jobs in the process. With global warming an existential imperative, our mission has never been more urgent. The task of implementing and sustaining resilient and effective waste reduction programs cannot be left to the government alone. It is not enough to pass laws and resolutions that declare ambitious goals. There must be some mechanism to generate the political will and public support needed to achieve such goals, and it is the responsibility of the private and voluntary sectors to develop and drive that mechanism.

With its 30-year legacy in the waste management arena, Recycle Hawai'i is uniquely positioned to assist Hawai'i County as it strives to rebuild its diversion programs. In its role as a 501 (c) 3 charity, Recycle Hawai'i can attract monetary and in-kind donations to help decrease government costs; in its role as an NGO, the organization can explore and implement solutions in ways the government cannot. Hawai'i County's ambitious waste reduction goals can only be met through strong partnerships that allow it to leverage resources and increase public buy-in. Although the primary target of our programs is Hawai'i Island residents and visitors, as our partnership with Hawai'i County succeeds, we pave the way for similarly successful endeavors throughout the Hawaiian Islands.

TARGET POPULATION TO BE SERVED

This project will center on the residents of rural, South Kona who use the Ke'ei transfer station. Additionally, it will create recycling infrastructure and solutions for businesses and residents of the extended North and South Kona corridor. In particular, it will focus on identifying entrepreneurial opportunities for women, minorities, and other underserved populations in the local area. We expect this initiative to also service locally-owned businesses and wider community members during recycling drives or events.

It is worth noting that most of Hawaii County is rated as "poverty-persistent" areas and the intended service area will fall within a poverty-persistent area.

GEOGRAPHIC COVERAGE

While this mobile pilot will be staged in West Hawai'i, the goal is for the program is to be a proof of concept, and further MRCs can be integrated in other regions of Hawai'i County further diverting recyclable materials from the landfill.

SERVICE SUMMARY AND OUTCOMES

TASK	MONTH												
	-1	1	2	3	4	5	6	7	8	9	10	11	12
1. Receive quotes for equipment													
2. Place equipment orders and receive donated equipment													
3. Develop outreach materials													
4. Finalize operating logistics													
5. Hire two individuals													
6. Begin capturing and staging recyclables													
7. Hire one individual													
8. Receive broker shipping container and return													
9. Pilot assessment													

Following the first shipment of materials off-island, Recycle Hawai'i will hold two assessment events: (1) an internal post-mortem with staff to review logistical inefficiencies, new ideas, and financial costs and (2) an external presentation with stakeholders to share the results of the pilot and discuss opportunities for sustained programming.

Measures of effectiveness to be monitored throughout the pilot are

1. The tonnage of materials recycled. Tonnage of materials recycled will be weighed in the shipping containers at the Kawaihae dock prior to receiving materials at the port in Long Beach, where a final weight confirmation will be conducted.
2. Percent time spent by recyclers on each part of the recycling process – quality assurance, bailing, maintenance, transportation. Estimation to be conducted by the foreman and Zero Waste Director (ZWD).
3. Month over month business commitment to the mobile pilot recycling from April to December. Reported by ZWD.
4. Community awareness of recycling opportunities, quantified by press, events, speaking commitments, and NGO partnerships over time. Reported by ZWD and ED.

EXPERIENCE AND CAPABILITY

Beyond Recycle Hawaii's 30 year legacy of demonstrating million-dollar recycling programming on Hawai'i Island, the team is composed of experts across materials recycling operations, logistics and markets, composting, research and development, community engagement, and public policy.

Nick Riznyk is a business owner, consultant, and investor in local start-ups. He grew up splitting time between Alaska and Hawaii. After college, he spent a decade in the high-tech industry, helping develop mobility solutions, and early internet technologies. Upon completing his MBA, he chose to downshift corporate life, return to Hawaii, and pursue his passions of sustainability and entrepreneurship. He co-founded Hawaii Angels, Big Island – a network for high net-worth private equity investors, and worked with several local start-ups in the “green tech” space. Nick founded Hana Hou Recycling in 2008, to bring zero-waste consulting, and recycling services to the Kona-Kohala coast. He continues to work with start-ups, and projects focused on delivering local, sustainable solutions for Hawaii Island communities.

Evan Lam was raised in an entrepreneurial family on Hawaii Island. He's previously worked as a professional chef, a cannabis entrepreneur, and a freelance consultant. After working in and opening restaurants in Australia and the San Francisco Bay Area, Evan opened an R&D cannabis cultivation facility with a focus on eliminating waste streams and lowering the energy impact of indoor, medical cannabis cultivation. He then began a journey into the sustainability space working in various freelance roles as a consultant, systemic change agent, and communicator. He currently runs a localized cardboard recycling social enterprise and works as a freelance consultant with projects relating to carbon emissions, systemic change, waste management, and more.

Born and raised in rural Pennsylvania, Kristine Kubat is a 40-year resident of Hawai'i who lives in Hilo in close proximity to her two children and five grandchildren. Kristine comes to Recycle Hawai'i with a lifetime of involvement in environmental and social justice activism that began in middle school (when she created a fund for Biafran refugees), and continues to this day as she seeks to increase diversity within Hawai'i's environmental community. Kristine's tenure at RH began in 2010 when she managed the county's used motor oil program, assisted in the development of new programs, and wrote grants. Kristine joined the board in 2019, serving briefly as our president until taking the executive directorship. Kristine's wide-ranging background in politics, advocacy, journalism, project management, and community outreach serve the organization well.

FACILITIES

This request is for development and proof of concept of a Mobile Recovery Center (MRC). Used successfully in other countries such as Australia for large events and rural communities, the MRC is a replacement for traditional, and very expensive Materials Recovery Facility (MRF). The MRC is a low-cost, low-tech, high-output materials recovery solution for rural, and small communities without the economies of scale to support a traditional \$20-\$40M MRF.

The MRC accepts “cleanstream,” source-separated material, and allows for quality assurance and removal of some contamination. It includes an off-grid solution for separation, a trailer-mounted generator, bailers and a glass-to-sand machine. Moreover, the MRC can be transported to different communities as needed. It is a new materials recovery model which replaces the outdated, Materials Recovery Facility (MRF) accepting single-stream or dirty stream materials. Not only MRF’s require a massive capital investment, they include high operating costs, and due to high contamination rates, they have a lower percentage of diversion.

Two local companies are committed to supporting this MRC and its diversion of operations: Atlas Recycling and Hana Hou Recycling. Atlas Recycling is a local scrap recycler and has certified recycling and processing facilities and extensive equipment for processing and staging recoverable materials. Hana Hou Recycling has hauling and logistical expertise for the transport of recoverable materials. Additionally, the company has networks of commercial businesses and residential communities demanding recycling solutions.

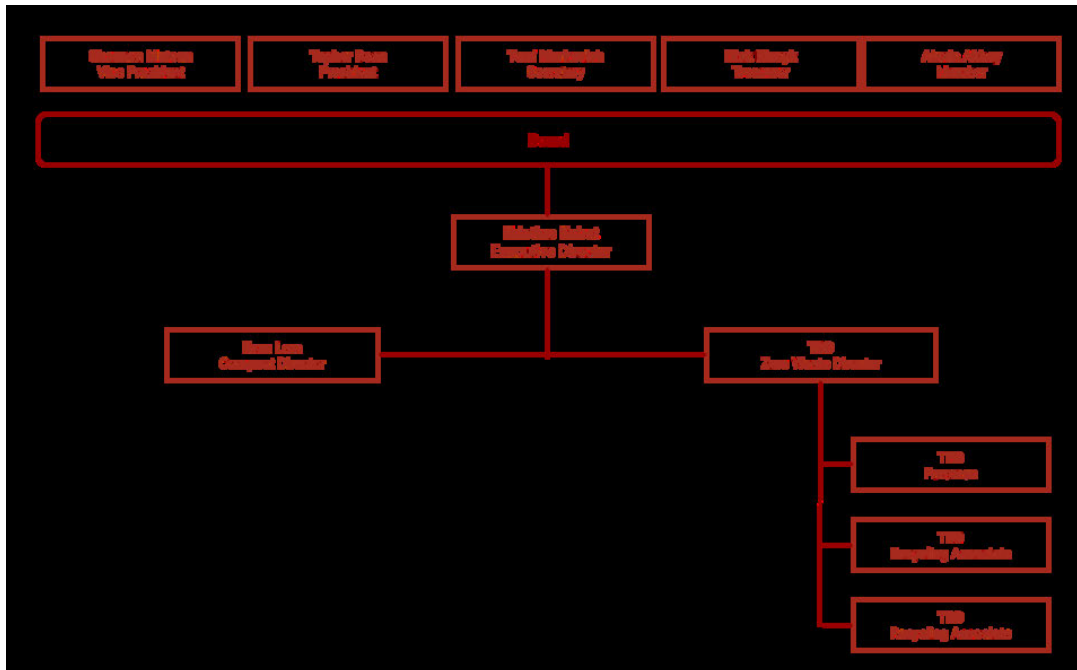
PERSONNEL | ORGANIZATION AND STAFFING

The executive director shall serve as the primary agent for the organization, manage the organization's paid staff, oversee office functions and report to the Recycle Hawaii board, generating financial documents and reports as needed. The ED will also interact with Hawaii County officials involved in waste management to keep them informed, build relationships, and keep abreast of contract opportunities as they arise. The Zero Waste Director (ZWD) will focus on fundraising by tracking opportunities, writing grants, and building relationships with potential funders for future mobile recycling programs. The ZWD will also play a role in representing Recycle Hawaii in the public arena. Qualifications for the ZW hire will include at least three years of experience with the duties of their respective positions, familiarity with Hawaii County waste management plans and protocols, a history of volunteerism, computer literacy, and outstanding references. Recycling staff – foreman and associates – will be able to lift 50 lb, work in outdoor environments, demonstrate an interest in local sustainability efforts. A special effort will be made to attract high school and or college students who may see

opportunity in the waste management industry as a result of this program involvement. The foreman will have experience in light-machinery operation.

In addition to these paid positions, Recycle Hawaii works with an all-volunteer, seven-member board of directors. Our collaborative organizational model operates on a level playing field, empowering staff to take responsibility while helping them realize their full potential. A yearly performance evaluation by the board of directors for all staff takes this model into consideration.

ORGANIZATION CHART



COMPENSATION - DIRECTORS

Executive Director	\$75,000
Compost Director	\$50,000
Zero Waste Director	\$50,000

LITIGATION & PRIVATE EDUCATION INSTITUTIONS

There is no ongoing or outstanding litigation with Recycle Hawaii at the time of writing. This grant will not be used to support any secretarian or non-secretarian private education institution within the state of Hawaii.

SUSTAINABILITY PLAN

During the 30 years Recycle Hawaii has served the public interest as a non-profit corporation, its board members and executive director have always managed to secure funding for its public service and educational programs. Support from the GIA program as we transition from solely providing educational and contract services to spurring innovation and community entrepreneurship will position Recycle Hawai'i to lead in the heavy lifting needed to get our resource recovery programs on a pono path. In the case of a successful pilot, the team involved on this proposal is committed to securing funding for seven more mobile facilities via federal, private philanthropic, state, and county funding/contracts.

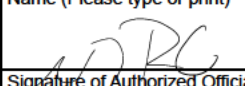
Recycle Hawaii
Balance Sheet
As of December 31, 2021

	<u>Dec 31, 21</u>
ASSETS	
Current Assets	
Checking/Savings	
11000 · Cash and cash equivalents	
11100 · Cash in bank - checking	95,162.39
Total 11000 · Cash and cash equivalents	<u>95,162.39</u>
Total Checking/Savings	95,162.39
Other Current Assets	
15000 · Other current assets	
15190 · Other prepaid expenses	1,500.00
Total 15000 · Other current assets	<u>1,500.00</u>
Total Other Current Assets	<u>1,500.00</u>
Total Current Assets	96,662.39
Fixed Assets	
17000 · Property and equipment	
17100 · Machinery and equipment	44,255.11
17150 · Accumulated depreciation - M&E	<u>(31,085.93)</u>
Total 17000 · Property and equipment	<u>13,169.18</u>
Total Fixed Assets	13,169.18
Other Assets	
18000 · Intangible assets	
18200 · Organizational costs	719.65
18250 · Accum. amortization - org. cost	<u>(719.65)</u>
Total 18000 · Intangible assets	<u>0.00</u>
Total Other Assets	<u>0.00</u>
TOTAL ASSETS	<u>109,831.57</u>
LIABILITIES & EQUITY	
Equity	
31000 · Opening Balance Equity	66,867.91
32000 · Unrestricted Net Assets	(40,798.48)
Net Income	83,762.14
Total Equity	<u>109,831.57</u>
TOTAL LIABILITIES & EQUITY	<u>109,831.57</u>

BUDGET REQUEST BY SOURCE OF FUNDS

Period: July 1, 2022 to June 30, 2023

Applicant: Recycle Hawai'i

BUDGET CATEGORIES	Total State Funds Requested (a)	Total Federal Funds Requested (b)	Total County Funds Requested (c)	Total Private/Other Funds Requested (d)
A. PERSONNEL COST				
1. Salaries	\$46,200.00			\$57,600.00
2. Payroll Taxes & Assessments				
3. Fringe Benefits				
TOTAL PERSONNEL COST	\$46,200.00			\$57,600.00
B. OTHER CURRENT EXPENSES				
1. Airfare, Inter-Island				
2. Insurance				
3. Lease/Rental of Equipment				\$6,000.00
4. Lease/Rental of Space	\$9,000.00			
5. Staff Training				\$2,500.00
6. Supplies				
7. Telecommunication				
8. Utilities				
9				
10				
11				
12				
13				
14				
15				
16				
17				
18				
19				
20				
TOTAL OTHER CURRENT EXPENSES	\$9,000.00			\$8,500.00
C. EQUIPMENT PURCHASES	\$104,400.00			\$15,000.00
D. MOTOR VEHICLE PURCHASES	\$200,000.00			
E. CAPITAL				
TOTAL (A+B+C+D+E)	\$359,600.00			\$81,100.00
SOURCES OF FUNDING		Budget Prepared By:		
(a) Total State Funds Requested	\$359,600.00	Alexia Akbay		
(b) Total Federal Funds Requested		Name (Please type or print) Phone		
(c) Total County Funds Requested				
(d) Total Private/Other Funds Requested	\$70,000.00	Signature of Authorized Official Date		
		1/15/22		
TOTAL BUDGET	\$429,600.00	Nick Riznyk, Treasurer		
		Name and Title (Please type or print)		

Applicant: Recycle Hawai'i

FUNDING AMOUNT REQUESTED						
TOTAL PROJECT COST	ALL SOURCES OF FUNDS RECEIVED IN PRIOR YEARS		STATE FUNDS REQUESTED	OTHER SOURCES OF FUNDS REQUESTED	FUNDING REQUIRED IN SUCCEEDING YEARS	
	FY: 2020-2021	FY: 2021-2022	FY:2022-2023	FY:2022-2023	FY:2023-2024	FY:2024-2025
PLANS	\$38,000	\$31,500	\$46,200	\$55,000		
LAND ACQUISITION	-		\$9,000			
DESIGN						
CONSTRUCTION					\$45,000	\$45,000
EQUIPMENT			\$304,400	\$15,000	\$200,000	\$200,000
TOTAL:	\$38,000	\$31,500	\$359,600	\$70,000	\$245,000	\$245,000
JUSTIFICATION/COMMENTS: The mobile resource recovery project is a new initiative for 2022, no prior funding has been accepted yet.						

Applicant: Recycle Hawai'i

DESCRIPTION EQUIPMENT	NO. OF ITEMS	COST PER ITEM	TOTAL COST	TOTAL BUDGETED
Generator	1.00	\$8,000.00	\$ 8,000.00	
Forklift	1	\$20,000.00	\$ 20,000.00	
Mini excavator	1	\$15,000.00	\$ 15,000.00	
Glass crusher	1	\$30,000.00	\$ 30,000.00	
40' shipping container	1	\$5,000.00	\$ 5,000.00	
Cement pad	1	\$20,000.00	\$ 20,000.00	
Super sacks	40	\$35.00	\$ 1,400.00	
Tipping slide	2	\$2,500.00	\$ 5,000.00	
TOTAL:	48		\$ 104,400.00	

JUSTIFICATION/COMMENTS:

DESCRIPTION OF MOTOR VEHICLE	NO. OF VEHICLES	COST PER VEHICLE	TOTAL COST	TOTAL BUDGETED
Hooklift Truck	1.00		\$ 100,000.00	
Curbside packer	1.00		\$ 100,000.00	
			\$ -	
			\$ -	
			\$ -	
TOTAL:	2		\$ 200,000.00	

JUSTIFICATION/COMMENTS:

GOVERNMENT CONTRACTS, GRANTS, AND / OR GRANTS IN AID

Applicant: Recycle Hawai'i

Contracts Total: 259,200

	CONTRACT DESCRIPTION	EFFECTIVE DATES	AGENCY	GOVERNMENT ENTITY (U.S./State/Hawaii/ Honolulu/ Kauai/ Maui County)	CONTRACT VALUE
1	Operate seven resource centers	FY17-18	Dept of Env Mang	Hawaii County	259,200
2					
3					
4					
5					
6					
7					
8					
9					
10					
11					
12					
13					
14					
15					
16					
17					
18					
19					
20					
21					
22					
23					
24					
25					
26					
27					
28					
29					
30					