



STATE OF HAWAII  
DEPARTMENT OF EDUCATION  
P.O. BOX 2360  
HONOLULU, HAWAII 96804

**Date:** 02/17/2021

**Time:** 03:05 PM

**Location:** CR 229 & Videoconference

**Committee:** Senate Education  
Senate Agriculture and Environment

**Department:** Education

**Person Testifying:** Dr. Christina M. Kishimoto, Superintendent of Education

**Title of Bill:** SB 1251 RELATING TO THE HAWAII FARM TO SCHOOL PROGRAM.

**Purpose of Bill:** Authorizes the department of education to meet the local farm to school meal goal of fifteen per cent of food served in public schools to be locally sourced by 2025 and thirty per cent by 2030.

**Department's Position:**

The Hawaii State Department of Education (Department) supports the intent of SB 1251 to increase procurement of local produce and food served to students.

The Department's Office of Facilities and Operations School Food Services Branch (SFSB) is currently performing an internal review to evaluate the amount of local product purchased in the 2019-2020 school year. Evaluating the prior year's procurements will assist the Department with assessing baseline amounts of local produce purchased prior to the COVID-19 pandemic. The SFSB is continually working on systems that will allow the Department to capture the information and data needed to submit the annual report of findings that are recommended in this bill.

Thank you for the opportunity to testify on this measure.

The Hawai'i State Department of Education is committed to delivering on our promises to students, providing an equitable, excellent, and innovative learning environment in every school to engage and elevate our communities. This is achieved through targeted work around three impact strategies: school design, student voice, and teacher collaboration. Detailed information is available at [www.hawaiipublicschools.org](http://www.hawaiipublicschools.org).



Email: [communications@ulupono.com](mailto:communications@ulupono.com)

SENATE COMMITTEES ON EDUCATION AND AGRICULTURE & ENVIRONMENT  
Wednesday, February 17, 2021 — 3:05 p.m.

**Ulupono Initiative supports SB 1251, Relating to the Hawai'i Farm to School Program**

Dear Chair Kidani, Chair Gabbard, and Members of the Committees:

My name is Micah Munekata, and I am the Director of Government Affairs at Ulupono Initiative. We are a Hawai'i-focused impact investment firm that strives to improve quality of life throughout the islands by helping our communities become more resilient and self-sufficient through locally produced food; renewable energy and clean transportation; and better management of freshwater and waste.

**Ulupono supports SB 1251**, which authorizes the Department of Education (DOE) to achieve local farm to school meal goals of fifteen per cent of food served in public schools to be locally sourced by 2025 and thirty per cent by 2030.

Ulupono supports the State's Farm to School efforts to implement local food into statewide meal programs and believes that adopting policies that further advance local food procurement in school meals is important for the success of the DOE's 'Aina Pono program.

Ulupono would like to offer a few amendments for consideration that strengthen the overall farm to school meal goal. We recommend adding in the following language after each percentage goal (page 4 line 20, page 5 line 2, page 6 line 9, and page 6 line 11) to read "as measured by the per cent of the total cost of food."

Pilot projects in Kohala, Mililani and on the island of Kaua'i have been successful at modeling how local food procurement can be expanded when there is buy-in across various state and local entities, community companies and organizations, and the overall community as a whole. By creating a goal-oriented approach to local food adoption in school meals, the State is making a statement to prioritize fresh, nutritious local food for students, support local farmers and ranchers, and achieve Hawai'i's local food production goals.

Thank you for this opportunity to testify.

Respectfully,

Micah Munekata  
Director of Government Affairs

*Investing in a Sustainable Hawai'i*



SENATE COMMITTEE ON EDUCATION  
AND  
SENATE COMMITTEE ON AGRICULTURE & ENVIRONMENT

February 17, 2021 – 3:05 P.M. - Videoconference

**RE: SB 1251 - Relating to the Hawaii Farm to School Program –  
In Support**

Aloha Chairs Kidani and Gabbard, Vice Chairs Kim and Nishihara and  
Members of the Committees:

Hawai'i Aquaculture &  
Aquaponics Association

Hawai'i Cattlemen's Council

Hawai'i Farm Bureau  
Federation

Hawai'i Farmers' Union  
United

Hawai'i Food Industry  
Association

Hawai'i Food  
Manufacturers Association

Kohala Center

Land Use Research  
Foundation of Hawai'i

Maui Farm to School  
Network (Maui F2SN)

Ulupono Initiative

College of Tropical  
Agriculture and Human  
Resources - University of  
Hawai'i at Manoa

The Local Food Coalition **supports** SB 1251, which authorizes the department of education to meet the local farm to school meal goal of fifteen per cent of food served in public school to be locally sourced by 2025 and thirty per cent by 2030.

Farm to school programs support a nutritious school food environment that encourages students to make healthier choices. It's been six years since the adoption of Act 218 which established the Hawaii farm to school program. As of today, it's estimated that only 3% of food served in public schools is locally sourced. Our keiki deserve better. Increased access to fresh, local agricultural products is vital to the health, success and well-being of our keiki. The benchmarks in this bill will help ensure an increase in the amount of local fresh foods for our students.

The Local Food Coalition is an organization comprising of farmers, ranchers, livestock producers, investors and other organizations working to provide Hawaii's food supply.

We respectfully request your support of SB 1251. Thank you for the opportunity to submit testimony.

John Garibaldi  
808-544-8319  
[jgaribaldi@wik.com](mailto:jgaribaldi@wik.com)



1050 Bishop St. PMB 235 | Honolulu, HI 96813  
P: 808-533-1292 | e: info@hawaiiifood.com

#### Executive Officers

**Joe Carter**, Coca-Cola Bottling of Hawaii, *Chair*  
**Charlie Gustafson**, Tamura Super Market, *Vice Chair*  
**Eddie Asato**, The Pint Size Corp., *Secretary/Treas.*  
**Lauren Zirbel**, HFIA, *Executive Director*  
**John Schlif**, Rainbow Sales and Marketing, *Advisor*  
**Stan Brown**, Acosta Sales & Marketing, *Advisor*  
**Paul Kosasa**, ABC Stores, *Advisor*  
**Derek Kurisu**, KTA Superstores, *Advisor*  
**Beau Oshiro**, C&S Wholesale Grocers, *Advisor*  
**Toby Taniguchi**, KTA Superstores, *Advisor*

---

TO:

Committee on Education and Committee on Agriculture and Environment  
Senator Michelle N. Kidani and Senator Mike Gabbard, Chair  
Senator Donna Mercado Kim and Senator Clarence K. Nishihara, Vice Chair

FROM: HAWAII FOOD INDUSTRY ASSOCIATION

Lauren Zirbel, Executive Director

DATE: February 17, 2021  
TIME: 3:05pm  
PLACE: Via Videoconference

RE: SB1251 Relating to the Hawaii Farm to School Program

Position: Support

The Hawaii Food Industry Association is comprised of two hundred member companies representing retailers, suppliers, producers, and distributors of food and beverage related products in the State of Hawaii.

HFIA is in support of this measure. Increasing the use of locally grown food in our schools has a range of benefits. Making sure that Hawaii's school kids to have access to fresh, healthy, Hawaii grown fruits, vegetables, fish, poultry, and meat is good for kids. Providing a stable, consistent, large scale buyer is good for our local farmers. This measure is a win win. We encourage you to pass it and we thank you for the opportunity to testify.



P.O. Box 253, Kunia, Hawai'i 96759  
Phone: (808) 848-2074; Fax: (808) 848-1921  
e-mail [info@hfbf.org](mailto:info@hfbf.org); [www.hfbf.org](http://www.hfbf.org)

February 17, 2021

HEARING BEFORE THE  
SENATE COMMITTEE ON EDUCATION  
SENATE COMMITTEE ON AGRICULTURE AND ENVIRONMENT

**TESTIMONY ON SB 1251**  
RELATING TO THE HAWAII FARM TO SCHOOL PROGRAM

Conference Room 229  
3:05 PM

Aloha Chairs Kidani and Gabbard, Vice Chairs Kim and Nishihara, and Members of the Committees:

I am Brian Miyamoto, Executive Director of the Hawaii Farm Bureau (HFB). Organized since 1948, the HFB is comprised of 1,800 farm family members statewide and serves as Hawaii's voice of agriculture to protect, advocate and advance the social, economic, and educational interests of our diverse agricultural community.

**The Hawaii Farm Bureau supports SB 1251**, which authorizes the department of education to meet the local farm to school meal goal of fifteen per cent of food served in public schools to be locally sourced by 2025 and thirty per cent by 2030.

HFB strongly supports the increased use of locally grown agricultural products, fruits, vegetables, meats, dairy, and poultry products in all of our state institutions.

HFB appreciates the intent of SB 1251 which sets goals to increase the required percentage of locally grown produce that the department of education must source for their meals. Policies, investments, and resources that support agriculture are necessary to ensure that Hawaii's farmers and ranchers can supply the produce to meet the goals established in SB 1251.

Thank you for this opportunity to testify.

**SB-1251**

Submitted on: 2/15/2021 2:56:12 PM

Testimony for EDU on 2/17/2021 3:05:00 PM

<b>Submitted By</b>	<b>Organization</b>	<b>Testifier Position</b>	<b>Present at Hearing</b>
Eileen K Nanni	Individual	Support	No

Comments:

Aloha Senators,

I strongly support Bill SB1251

As a community volunteer and organizer, I know we can hui together and make this happen. Now with Zoom ability there are less excuses for getting to know all who could potentially support to make our public schools better. We can be the poster child for all public schools across our nation. Please strongly consider this golden opportunity for better public school support!

Aloha nui loa,

Eileen Kiyoko Nanni

DAVID Y. IGE  
Governor

JOSH GREEN  
Lt. Governor



PHYLLIS SHIMABUKURO-GEISER  
Chairperson, Board of Agriculture

MORRIS M. ATTA  
Deputy to the Chairperson

State of Hawaii  
**DEPARTMENT OF AGRICULTURE**  
1428 South King Street  
Honolulu, Hawaii 96814-2512  
Phone: (808) 973-9600 FAX: (808) 973-9613

**TESTIMONY OF PHYLLIS SHIMABUKURO-GEISER  
CHAIRPERSON, BOARD OF AGRICULTURE**

**BEFORE THE SENATE COMMITTEES ON EDUCATION  
AND  
AGRICULTURE AND ENVIRONMENT**

**FEBRUARY 17, 2021  
2:00 P.M.  
VIA VIDEOCONFERENCE**

**SENATE BILL NO. 1251  
RELATING TO FARM TO THE FARM TO SCHOOL PROGRAM**

Chairpersons Kidani, Gabbard, and Members of the Committees:

Thank you for the opportunity to testify on Senate Bill 1251, relating to the Hawaii farm to school program. This bill establishes a programmatic goal for the Department of Education (DOE) that at least fifteen per cent of food served in public schools shall consist of locally sourced products by 2025, increasing to thirty per cent by 2030. The Department of Agriculture (“the Department”) offers comments on this measure.

The Department strongly supports the Farm to School Program and is a committed partner in the effort to bring local agricultural products to menus at our public schools and in all State institutional food service programs through the farm to state program. The Department affirms its commitment to continue connecting farmers to the DOE and other state institutions, providing commodity information, and supporting local producers in obtaining and maintaining the food safety certifications required to provide food to our schools. As the DOE would be responsible for much of the logistical concerns contemplated by this measure, the Department of Agriculture defers to the



Department of Education regarding the goal of sourcing 30% of food served in public schools locally by 2030.

Thank you for the opportunity to testify on this measure.





Farmer owned, 'āina grown

Tuesday, February 16, 2021

Re: [SB1251](#) RELATING TO THE HAWAII FARM TO SCHOOL PROGRAM

Thank you for the opportunity to submit testimony in **SUPPORT** of SB1251 which will authorize the department of education to meet the local farm to school meal goal of fifteen percent of food served in public schools to be locally sourced by 2025 and thirty percent by 2030.

**I SUPPORT with the following amendment: (1) Add “staple starches” to definition of “fresh local agricultural product” (page 5, line 4) (2) Refer to HB767 as the preferred bill.**

We formed the Hawai'i 'Ulu Cooperative in 2016 to build a network of small-scale, diversified farms that grow breadfruit and want to improve community access to this amazing, nutritious food. From 2018 to 2020 we were a primary local supplier for the DOE's 'Aina Pono program, providing minimally processed sweet potatoes, bananas, green papayas, and 'ulu - which transitioned to not only a Harvest of the Month menu item but also a regular part of the school lunch cycle as a substitute for grains/bread in school year 2019-2020. Over these two years, HUC not only supplied these local staples to DOE but also helped to develop USDA compliant recipes in partnership with schools, cafeteria managers, nutritionists, teachers and students; as well as integrated educational materials aligned to curricular standards to help increase kids' knowledge of these crops.

Adding “staple starches” to the definition of “fresh local agricultural product” in SB1251 is critical because of the importance of Hawai'i-grown starches such as breadfruit, taro, and sweet potato to local food security, culture and agriculture.

*Today virtually 100% of Hawai'i's staple foods are imported, putting the state in a precarious position should importation be disrupted. It is critical that we (re)build our local capacity to grow and process at least 30% of the staples we consume, and ensuring that DOE incorporates this public prerogative into its own local procurement goals will help to lead the way and ensure we reach this important milestone.*

If you have questions regarding HUC's support, please contact me at (808) 238-8869 or by email at [info@eatbreadfruit.com](mailto:info@eatbreadfruit.com).

Sincerely,



**Hawai'i 'Ulu Producers Cooperative**

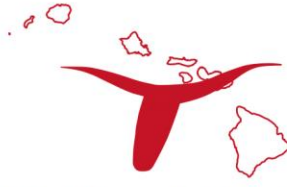
79-1017 E Honalo Rd, Kailua-Kona, Hawai'i 96740 | 808-238-8869 | [eatbreadfruit.com](http://eatbreadfruit.com) | [info@eatbreadfruit.com](mailto:info@eatbreadfruit.com)

*Dana Shapiro*

Dana Shapiro, General Manger



Hawai'i 'Ulu Producers Cooperative



**Hawaii Cattlemen's Council, Inc.**

COMMITTEE ON EDUCATION  
Senator Michelle N. Kidani, Chair  
Senator Donna Mercado Kim, Vice Chair

COMMITTEE ON AGRICULTURE AND ENVIRONMENT  
Senator Mike Gabbard, Chair  
Senator Clarence K. Nishihara, Vice Chair

**SB1251**

RELATING TO THE HAWAII FARM TO SCHOOL PROGRAM.

DATE: Wednesday, February 17, 2021  
TIME: 3:05 PM  
PLACE: Conference Room 229 & Videoconference

Chairs Kidani and Gabbard, Vice Chairs Kim and Nishihara, and Members of the Committees,

The Hawaii Cattlemen's Council **supports SB1251** which authorizes the department of education to meet the local farm to school meal goal of fifteen per cent of food served in public school to be locally sourced by 2025 and thirty per cent by 2030. Ranchers support the Farm to School program and want to see it prosper, for both the health of our students as well as the health of our economy. We encourage the increase in local food purchasing to support Hawaii's ranchers and farmers, keep funds in the state, and encourage a habit for our students to eat and support local agriculture.

It's been 6 years since the adoption of Act 218 which established the Hawaii farm to school program. As of today, it's estimated that only 3% of food served in public schools is locally sourced. The Hawaii Cattlemen's Council supports increasing that percentage of locally sourced food, and Hawaii's ranchers are ready to contribute to that by providing local beef, a nutritious protein. Hawaii's locally grown beef provides 10 essential nutrients in a single 3 oz. serving. This includes high-quality protein, iron, zinc and B vitamins. These nutrients are especially important for the development of young, active growing children.

Thank you for the opportunity to testify on this matter.

Nicole Galase  
Hawaii Cattlemen's Council  
Managing Director



## **Hawaii Cattlemen's Council**

### **Position Statement on Local Beef Production**

One of the core strengths of any society lies in its ability to be self-sufficient, to feed itself. Hawaii's beef producers are committed to providing wholesome food for its community that is safe, secure and sustainable.

For most of its existence, Hawaii's beef industry has followed a conventional model with production, harvest and processing occurring within state. In the early 1990's, a combination of rising costs and inefficiencies led Hawaii producers to shift to an export calf model which remains dominant today. However, with increasing consumer demand for locally sourced food, there is renewed focus on expanding local beef production. Several private labels have emerged over the last 10 years, raising the flavor and tenderness profile for local beef, further driving demand. The groundwork for expansion has been set.

In recent years, Hawaii Cattlemen's Council (HCC) and the Hawaii Department of Agriculture (HDOA) recognized limited harvest capacities as one of the primary constraints for expanding local beef production. It has been HCC's position that each island should have access to a full complement of harvest and processing facilities. The economic benefit of efficiencies achieved with consolidation should be balanced with the unique challenges Hawaii's beef industry faces. These include;

- the vulnerability of interisland transportation of perishable goods and/or live animals as it relates to;
  - food security and safety, animal welfare, affordable shipping rates, labor disputes and equipment failure
- the need to develop and maintain a diversified economic base and skilled labor force on outer islands
- limited competitive markets
- quasi-public responsibility of state-owned food processing facilities

Among other things previously identified (see attached, "A Livestock Harvest Facility for Hawaii"), the ideal model should address;

- Flexible marketing – direct sale vs retained ownership
- Increased capacity/access for all producers to harvest, process and market
- Growth of market share through "coopetition" vs direct competition
- Compliance with regulatory planning concepts and concerns, especially as related to environmental issues
- Preservation of the integrity of locally labeled beef
- Opportunity to expand locally branded products

Our producers continue to provide high-quality grass-fed beef year-round, which serves a loyal, sustainability-minded customer base that increasingly want to know where their food comes

from. HCC supports a business model that facilitates infrastructure that allows each island to maintain autonomy over its beef production from gate to plate.

## **A Livestock Harvest Facility for the State of Hawaii Hawaii Cattlemen's Council**



Senate Bill 1257 provides \$1.5M for the planning and design of a livestock harvest facility within the state of Hawaii. This is an ambitious initiative that represents our strong belief in the future of our industry and our commitment to building infrastructure that will help grow and expand our local markets.

Our critical need for this project is based on the following;

- a. increased consumer demand for local beef
- b. increased market demand created by expanding programs, such as our schools' Aina Pono initiative
- c. availability for producers' strategic culling programs
- d. security for animal welfare in the face of disease or drought

The Request for Proposal (RFP) for planning and design should include the following key components and deliverables from firms who will respond;

1. An analysis of a viable business/feasibility plan that addresses expected throughput, revenues, expenses and return on investment related to the operation of a new facility. Our initial recommendation for Hawaii Island is for a 5,000 head capacity that can be expanded to 10,000 head/year. This will be varied island by island. We see this information as critical to attracting capital to our state and industry.
2. Schematics and drawings of the layout of a new facility that can be adapted to meet different environmental conditions for each island and can scale up or down to meet production needs.
3. Analysis and review of technologies to support the remote locations and sensitive environments in which this facility will operate.

4. Review of the following key features of the facility itself. These features will ensure that the proposed model will meet our goal of creating a facility that serves the sustainability needs of our industry addressed through these economic, social and environmental considerations.

<b>Economic</b>	<ul style="list-style-type: none"> <li>• Capacity (target steady state, initial, and ramp up)</li> <li>• Scalable/modular</li> <li>• Marketing partner</li> <li>• Added value/processing</li> <li>• Certification for specialty markets – i.e. export, BRC, GFSI</li> <li>• Management expertise</li> <li>• Transportation costs</li> <li>• Flexible marketing – direct sale vs retained ownership</li> <li>• Innovation and technology</li> <li>• Useful life</li> <li>• Potential for multi-species use</li> <li>• Scope of facility—slaughter, processing, and further processing capabilities</li> <li>• Value Added Products and Processing</li> </ul>
<b>Social</b>	<ul style="list-style-type: none"> <li>• Food safety</li> <li>• Worker safety</li> <li>• Animal well-being</li> <li>• Employee engagement</li> <li>• Central location</li> <li>• Affordable housing</li> </ul>
<b>Environmental</b>	<ul style="list-style-type: none"> <li>• Renewable energy</li> <li>• Waste disposal - bio digester</li> <li>• Water resources and requirements</li> <li>• Critical path for permits</li> <li>• Environmental Impact Statement</li> <li>• Air emissions/odor</li> <li>• Proximity to existing infrastructure and need for establishment of new connections to electrical, water, wastewater, and roadways.</li> </ul>

HCC believes our industry and agriculture as a whole are at a critical crossroads. There is a great deal to be optimistic about including consumer demand for more locally sourced food, public officials who have declared a commitment to improve Hawaii’s food security, an advocate in our HDOA administration who believe in the need for Hawaii’s agriculture to thrive and people within the ranching community with the will to move our industry forward. These things combine to create powerful synergy to keep our industry and agriculture a vibrant and relevant part of our state’s economy and landscape. This project is the result of that synergy and a real, tangible move forward for the beef industry.



**Testimony to the Senate Joint Committee on Education and Agriculture and  
Environment  
Wednesday, February 17, 2021; 3:05 p.m.  
State Capitol, Conference Room 229  
Via Videoconference**

**RE: SENATE BILL NO. 1251, RELATING TO THE HAWAII FARM TO SCHOOL PROGRAM.**

Chair Kidani, Chair Gabbard, and Members of the Joint Committee:

The Hawaii Primary Care Association (HPCA) is a 501(c)(3) organization established to advocate for, expand access to, and sustain high quality care through the statewide network of Community Health Centers throughout the State of Hawaii. The HPCA **SUPPORTS** Senate Bill No. 1251, RELATING TO THE HAWAII FARM TO SCHOOL PROGRAM.

As received by your Committee, House Bill No. 0702, would allow the Department of Education to meet the local farm to school meal goal of 15% of food served in public schools to be locally sources by 2025, and 30% by 2030.

By way of background, the HPCA represents Hawaii Federally-Qualified Health Centers (FQHCs). FQHCs provide desperately needed medical services at the frontlines in rural and underserved communities. Long considered champions for creating a more sustainable, integrated, and wellness-oriented system of health, FQHCs provide a more efficient, more effective and more comprehensive system of healthcare.

Over the past four years, HPCA has served as a member of the Obesity Prevention Task Force, and as such has joined the Hawaii Public Health Institute and other advocates in support of efforts to promote healthy diets and the increased consumption of locally-grown vegetables and fruits in our schools and communities.

The HPCA also asserts that the COVID-19 pandemic has severely threatened the health and welfare of our citizens, especially Hawaii's underprivileged and rural communities. With so many people unemployed, entire families are struggling to put food on the table on a consistent basis. All one needs to do is visit one of our member FQHC's food distribution events and see the line of cars stretch for miles and the large number of people who wait for hours to receive some surplus food.

**Testimony on Senate Bill No. 1251**  
**Wednesday, February 17, 2021; 3:05 p.m.**  
**Page 2**

The COVID-19 pandemic has greatly exacerbated the need for a program like this. Our over-reliance on tourism has weakened our ability to bounce back from COVID's dire economic realities.

The only way for us to protect ourselves from the next global pandemic is for Hawaii to diversify its economic base and become more self-sufficient. And for us to do that, we need to grow more food.

The HPCA understands that the State is experiencing its worst financial crisis since the Great Depression and appreciates how difficult your job will be in deciding where very limited resources will go over the next two years. But to merely perpetuate the status quo will fail to address the underlying problems that created the situation that we currently find ourselves in.

Support for agriculture is bold. Support for this bill in our time of crisis is bold.

We urge your favorable consideration of this bill.

Thank you for the opportunity to testify. Should you have any questions, please do not hesitate to contact Public Affairs and Policy Director Erik K. Abe at 536-8442, or [eabe@hawaiiipca.net](mailto:eabe@hawaiiipca.net).





**ADA**

**HAWAII**

AMERICANS FOR DEMOCRATIC ACTION

**OFFICERS**

John Bickel, President  
Alan Burdick, Vice President  
Dave Nagajji, Treasurer  
Doug Pyle, Secretary

**DIRECTORS**

Melodie Aduja  
Juliet Begley  
Stephanie Fitzpatrick  
Jan Lubin  
John Miller  
Jenny Nomura  
Stephen O'Harrow  
Lyn Pyle

**MAILING ADDRESS**

P.O. Box 23404  
Honolulu  
Hawaii 96823

February 11, 2021

TO: Chairs Gabbard & Kidani and members of AEN/EDU Committees

RE: SB 1251 Relating to the Farm to School Program

Support for hearing on Feb. 17

Americans for Democratic Action is an organization founded in the 1950s by leading supporters of the New Deal and led by Patsy Mink in the 1970s. We are devoted to the promotion of progressive public policies.

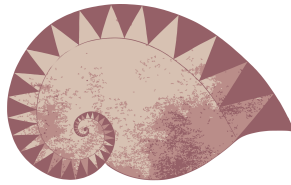
We support SB 1251 as it would authorize the Dept. of Education to meet the local farm to school meal goal of fifteen per cent of food served in public schools to be locally sourced by 2025 and thirty per cent by 2030.

We support local farmers and believe their food will be nutritious for our children.

Thank you for your favorable consideration.

Sincerely,  
John Bickel, President





Pono Hawai'i Initiative

Patrick Shea - Treasurer • Lena Mochimaru - Secretary  
Nelson Ho • Summer Starr

Monday, February 15, 2021

Relating to the Hawaii Farm to School Program  
Testifying in Support

Aloha Chairs and members of the committees,

The Pono Hawai'i Initiative (PHI) **supports 1251 Relating to the Hawaii Farm to School Program**. This measure authorizes the Department of Education to meet the local farm to school meal goals of 15% by 2025 and 30% by 2030.

This measure would substantially help local farmers and local food producers. This would help to keep jobs and money on our islands while also increasing the fresh produce available to our keiki.

For these reasons, we urge you to move this bill forward.

Mahalo for the opportunity,

Gary Hooser  
Executive Director  
Pono Hawai'i Initiative



# Food+ Policy Internship 2021

[food@purplemaia.org](mailto:food@purplemaia.org)

February 15, 2021

To: Senate EDU/ADN Committees

Subject: Testimony in SUPPORT of SB 1251

Aloha mai kākou,

My name is Brian “loane” Jahn and I am writing to express my support for SB 1251 - Relating to the Farm to School Program.

I am very concerned for communities in Hawai‘i with regard to food security, food sovereignty, and overall economic instability as a result of the COVID-19 pandemic. As a strong advocate for the Farm to School Program, I feel that this is one area where we cannot fail as it deals primarily with the health, safety, well-being, and education of our keiki. With more access to locally sourced foods, the Farm to School program encourages waste reduction, supports school gardens, and enhances health and nutrition for students and their families. Additionally, this program helps to reduce carbon emissions, and provides an example for keiki of what local food systems actually look like to help make better connections between food, people, and ‘āina.

By establishing a realistic goal, or baseline, the Farm to School program can significantly be enhanced to better serve the keiki and the community as a whole. The current Farm to School program only sources 3% of food locally, which means local producers are also missing out on opportunities to provide goods and services to local schools. By authorizing the Department of Education (DOE) to meet this local goal of 15% by 2025, and 30% by 2030, the DOE can make a strong start with a clearly defined goal for its newly acquired responsibility.

Me ke aloha,

Brian “loane” Jahn & the Food+ Interns

**The Food+ Policy internship** develops student advocates who learn work skills while increasing civic engagement to become emerging leaders. We focus on good food systems policy because we see the importance and potential of the food system in combating climate change and increasing the health, equity, and resiliency of Hawai‘i communities.

In 2021, the pilot cohort of interns are juniors, seniors, and recent graduates of the University of Hawai‘i West O‘ahu’s Sustainable Community Food Systems program. They are a mix of traditional and nontraditional students, including parents and veterans, who have backgrounds in education, farming, and Hawaiian culture.



February 16, 2021

To: Chair Kidani  
Vice Chair Mercado Kim  
Senate Committee on Education

Chair Gabbard  
Vice Chair Nishihara  
Senate Committee on Agriculture and Environment

RE: **STRONG SUPPORT for SB1251**

Thank you for this opportunity to testify in **SUPPORT** of **SB1251**, setting a programmatic goal that at least 15% of food served in Hawai'i public schools will be locally sourced by 2025 and 30% by 2030.

Blue Zones Project was brought to Hawai'i by HMSA to help increase the overall well-being of our communities and to make Hawaii a healthier, happier place to live, work and play. To accomplish that goal, we address ways that we can lower obesity rates, tobacco use, and chronic diseases.

Farm-to-school programs are greatly beneficial for youth; studies show that agriculture education, school gardens, and hands-on nutrition learning triples student consumption of fruits and vegetables in school lunches<sup>1</sup> and increases access to low-fat fruits and vegetables at home.<sup>2</sup> In addition, we know that most U.S. youth do not meet the recommendation of eating 2.5 to 6.5 cups of fruits and vegetables daily.<sup>3</sup> Exposing more students to fresh produce can shift student's perceptions about healthy foods and influence eating behaviors, both in and out of the school environment.

This bill can help the families of Hawai'i enjoy healthier lifestyles, which is why Blue Zones Project strongly **SUPPORTS SB1251**.

Sincerely,

Colby Takeda, MPH, MBA  
Senior Manager

---

<sup>1</sup> Koch, P., Wolf, R., Grazioplene, M., Gray, H. L., Trent, R., & Uno, C. (2017) FoodCorps: Creating healthy school environments. Laurie M. Tisch Center for Food, Education & Policy, Program in Nutrition, Teachers College, Columbia University.

<sup>2</sup> Wells, N. M., Meyers, B. M., Todd, L. E., Henderson, C. R., Barale, K., . . . Franz N. K. (2018). The carry-over effects of school gardens on fruit and vegetable availability at home: A randomized controlled trial with low-income elementary schools. *Prevention Medicine*, 112:152-159.

<sup>3</sup> National Farm to School Network. <http://www.farmtoschool.org/>

**SB-1251**

Submitted on: 2/15/2021 11:48:16 AM

Testimony for EDU on 2/17/2021 3:05:00 PM

<b>Submitted By</b>	<b>Organization</b>	<b>Testifier Position</b>	<b>Present at Hearing</b>
Meredith Buck	Individual	Support	No

Comments:

I support SB1251, especially in conjunction with HB767, and would love to see that my students can access fresh, locally sourced foods when they come to school.

**SB-1251**

Submitted on: 2/15/2021 9:11:14 PM

Testimony for EDU on 2/17/2021 3:05:00 PM

<b>Submitted By</b>	<b>Organization</b>	<b>Testifier Position</b>	<b>Present at Hearing</b>
Erin Mendelson	Individual	Support	No

Comments:

Thank you in advance for your time. I hope that children in Hawaii are provided opportunities to eat healthy and live healthy. These choices need to be established in our public school system. Our islands are remote thus shipping and flying in 97% of our foods puts us in a vulnerable and dependent situation. Yet our lands have the potential to provide more of our daily calories if we choose to live more sustainably. SB1251 sets an ambitious goal to increase agriculture in our islands and provide better food to our keiki. I hope you consider the importance of a greener future and take the steps to support this bill.

Best Regards,

Erin Mendelson

Special education teacher

**SB-1251**

Submitted on: 2/15/2021 11:31:08 PM

Testimony for EDU on 2/17/2021 3:05:00 PM

<b>Submitted By</b>	<b>Organization</b>	<b>Testifier Position</b>	<b>Present at Hearing</b>
Danielle Espiritu	Individual	Support	No

Comments:

I support SB1251. As an educator, I believe this bill establishes a realistic goal for growing our Farm to School program and will be a positive investment in our children and schools. In addition, it would help to support local agriculture, as the current Farm to School program only sources 3% of food locally. This could help us to grow our economy in ways that are sustainable and could work to increase partnership across different sectors of our communities. I urge you to support this bill.

**SB-1251**

Submitted on: 2/15/2021 11:09:58 AM

Testimony for EDU on 2/17/2021 3:05:00 PM

<b>Submitted By</b>	<b>Organization</b>	<b>Testifier Position</b>	<b>Present at Hearing</b>
Maki Morinoue	Individual	Support	No

Comments:

Aloha

I strongly support Bill SB1251

As a volunteer, PTO/SCC member and a community volunteer and organizer, I know we can hui together and make this happen. Now with Zoom ability there are less excuses for getting to know all who could potentially support to make our public schools better. We can be the poster child for all public schools across our nation.

Aloha

Maki



**SB-1251**

Submitted on: 2/15/2021 2:17:08 PM

Testimony for EDU on 2/17/2021 3:05:00 PM

<b>Submitted By</b>	<b>Organization</b>	<b>Testifier Position</b>	<b>Present at Hearing</b>
Setsuko Morinoue	Individual	Support	No

Comments:

Aloha

I strongly support Bill SB1251

As a volunteer, PTO/SCC member and a community volunteer and organizer, I know we can hui together and make this happen. Now with Zoom ability there are less excuses for getting to know all who could potentially support to make our public schools better. We can be the poster child for all public schools across our nation.

Aloha,

Setsuko Morinoue

**SB-1251**

Submitted on: 2/10/2021 12:44:17 PM

Testimony for EDU on 2/17/2021 3:05:00 PM

<b>Submitted By</b>	<b>Organization</b>	<b>Testifier Position</b>	<b>Present at Hearing</b>
Lois Crozer	Individual	Support	No

Comments:

Health is everything and we are learning more every day how destructive bad eating habits are. It is very important to feed our keiki healthy food and teach them what food actually IS! So many are swayed by advertising lies and think the boxed stuff in the supermarket is food. We live in the perfect place for this program, let's stop importing all the junk from other places and feed our keiki from our own soil. We need to be resilient as well.

**SB-1251**

Submitted on: 2/13/2021 2:15:54 PM

Testimony for EDU on 2/17/2021 3:05:00 PM

<b>Submitted By</b>	<b>Organization</b>	<b>Testifier Position</b>	<b>Present at Hearing</b>
Kevin Chang	Individual	Support	No

Comments:

Without a deep substantive understanding of this bill. I say as a proud public school student and former cafeteria worker getting better at locally sourcing our food, supporting local economy alternatives and well-being can only be good for our community. We need goals which are both challenging and achievable. 3% sounds like a low bar. Raise it.

Get them to eat more kalo!!!!

Aloha

Kevin

**SB-1251**

Submitted on: 2/13/2021 5:36:05 PM

Testimony for EDU on 2/17/2021 3:05:00 PM

<b>Submitted By</b>	<b>Organization</b>	<b>Testifier Position</b>	<b>Present at Hearing</b>
Daniela Torres	Individual	Support	No

Comments:

While these goals are quite lofty, we support the general direction of this bill. I would urge the state to file for some sort of appeal against the dairy milk requirement on the basis of the current racism lawsuit on the mainland over the dairy portion of the food pyramid linking to general lactose-intolerance of the Asian populations. If we have the option to provide less milk or very little milk in HIDOE, these goals will be much more attainable.

Mahalo,

Daniela Torres

Take Flight

**SB-1251**

Submitted on: 2/14/2021 12:48:52 PM

Testimony for EDU on 2/17/2021 3:05:00 PM

<b>Submitted By</b>	<b>Organization</b>	<b>Testifier Position</b>	<b>Present at Hearing</b>
Wendy Arbeit	Individual	Support	No

Comments:

I strongly support this bill that would benefit our keiki, our local farmers, and our economy. In fact, why not shorten the time increments? The sooner we give our farmers a steady market and our kids local, and thus more nutritious food, the better.

**SB-1251**

Submitted on: 2/14/2021 9:52:50 PM

Testimony for EDU on 2/17/2021 3:05:00 PM

<b>Submitted By</b>	<b>Organization</b>	<b>Testifier Position</b>	<b>Present at Hearing</b>
janice palma-glennie	Individual	Support	No

Comments:

aloha,

please support SB1251 which authorizes the DOE to meet the local farm to school meal goal of 15% of the food served in public schools to be locally sourced by 2025 and 30% by 2030.

mahalo,

janice palma-glennie

**SB-1251**

Submitted on: 2/15/2021 7:26:09 AM

Testimony for EDU on 2/17/2021 3:05:00 PM

<b>Submitted By</b>	<b>Organization</b>	<b>Testifier Position</b>	<b>Present at Hearing</b>
Michal Fentin Stover	Individual	Support	No

Comments:

I support the local farm to school program. I would like to see at least 15% of the food served in public schools to be locally sourced by 2025 and at least 30% by 2030. These are modest goals. Thank you.

**SB-1251**

Submitted on: 2/16/2021 7:33:39 AM

Testimony for EDU on 2/17/2021 3:05:00 PM

<b>Submitted By</b>	<b>Organization</b>	<b>Testifier Position</b>	<b>Present at Hearing</b>
Brian Jahn	Individual	Support	No

Comments:

Aloha mai kākou,

My name is Brian "Ioane" Jahn and I am writing to express my support for SB 1251 - Relating to the Farm to School Program.

I am very concerned for communities in Hawai'i with regard to food security, food sovereignty, and overall economic instability as a result of the COVID-19 pandemic. As a strong advocate for the Farm to School Program, I feel that this is one area where we cannot fail as it deals primarily with the health, safety, well-being, and education of our keiki. With more access to locally sourced foods, the Farm to School program encourages waste reduction, supports school gardens, and enhances health and nutrition for students and their families. Additionally, this program helps to reduce carbon emissions, and provides an example for keiki of what local food systems actually look like to help make better connections between food, people, and 'Āina.

By establishing a realistic goal, or baseline, the Farm to School program can significantly be enhanced to better serve the keiki and the community as a whole. The current Farm to School program only sources 3% of food locally, which means local producers are also missing out on opportunities to provide goods and services to local schools. By authorizing the Department of Education (DOE) to meet this local goal of 15% by 2025, and 30% by 2030, the DOE can make a strong start with a clearly defined goal for its newly acquired responsibility.

Me ke aloha,

Brian "Ioane" Jahn



**SB-1251**

Submitted on: 2/10/2021 3:32:37 PM

Testimony for EDU on 2/17/2021 3:05:00 PM

<b>Submitted By</b>	<b>Organization</b>	<b>Testifier Position</b>	<b>Present at Hearing</b>
Ruta Jordans	Individual	Support	No

Comments:

The more local food schools use is good for the keiki and good for the farmer. Please support.

**SB-1251**

Submitted on: 2/11/2021 10:24:14 AM

Testimony for EDU on 2/17/2021 3:05:00 PM

<b>Submitted By</b>	<b>Organization</b>	<b>Testifier Position</b>	<b>Present at Hearing</b>
Alec Marentic	Individual	Support	No

Comments:

I support this bill.

**SB-1251**

Submitted on: 2/11/2021 10:34:26 AM

Testimony for EDU on 2/17/2021 3:05:00 PM

<b>Submitted By</b>	<b>Organization</b>	<b>Testifier Position</b>	<b>Present at Hearing</b>
Regina Gregory	Individual	Support	No

Comments:

This is an important step toward self-sufficiency.

**SB-1251**

Submitted on: 2/14/2021 12:09:58 PM

Testimony for EDU on 2/17/2021 3:05:00 PM

<b>Submitted By</b>	<b>Organization</b>	<b>Testifier Position</b>	<b>Present at Hearing</b>
Sherry Pollock	Individual	Support	No

Comments:

Please vote YES on this bill. Getting more real, healthy food to people in need?

Who could be against that? Mahalo for your support.

Sherry Pollock

**SB-1251**

Submitted on: 2/12/2021 11:38:06 PM

Testimony for EDU on 2/17/2021 3:05:00 PM

<b>Submitted By</b>	<b>Organization</b>	<b>Testifier Position</b>	<b>Present at Hearing</b>
Andrea Nandoskar	Individual	Support	No

Comments:

Please support this bill! Mahalo for your consideration.

**SB-1251**

Submitted on: 2/14/2021 1:39:40 PM

Testimony for EDU on 2/17/2021 3:05:00 PM

<b>Submitted By</b>	<b>Organization</b>	<b>Testifier Position</b>	<b>Present at Hearing</b>
Greg Puppione	Individual	Support	No

Comments:

Whatever we can do to support and strengthen our food system, we should. This is a great way to do it and a wonderful way to provide more nutritious food to our keiki.

**SB-1251**

Submitted on: 2/13/2021 12:54:54 AM

Testimony for EDU on 2/17/2021 3:05:00 PM

<b>Submitted By</b>	<b>Organization</b>	<b>Testifier Position</b>	<b>Present at Hearing</b>
Kelsey Amos	Individual	Support	No

Comments:

This bill sets a good goal for local food in schools

**SB-1251**

Submitted on: 2/13/2021 2:38:49 PM

Testimony for EDU on 2/17/2021 3:05:00 PM

<b>Submitted By</b>	<b>Organization</b>	<b>Testifier Position</b>	<b>Present at Hearing</b>
Judith White	Individual	Support	No

Comments:

This measure is so important for culturally based food security. Please support!



**SB-1251**

Submitted on: 2/14/2021 11:27:54 AM

Testimony for EDU on 2/17/2021 3:05:00 PM

<b>Submitted By</b>	<b>Organization</b>	<b>Testifier Position</b>	<b>Present at Hearing</b>
Patricia Blair	Individual	Support	No

Comments:

Good idea

**SB-1251**

Submitted on: 2/14/2021 11:29:26 AM

Testimony for EDU on 2/17/2021 3:05:00 PM

<b>Submitted By</b>	<b>Organization</b>	<b>Testifier Position</b>	<b>Present at Hearing</b>
Sunny Savage	Individual	Support	No

Comments:

in strong support

**SB-1251**

Submitted on: 2/14/2021 12:01:07 PM

Testimony for EDU on 2/17/2021 3:05:00 PM

<b>Submitted By</b>	<b>Organization</b>	<b>Testifier Position</b>	<b>Present at Hearing</b>
Judith Perino	Individual	Support	No

Comments:

I support this bill.

**SB-1251**

Submitted on: 2/14/2021 3:21:23 PM

Testimony for EDU on 2/17/2021 3:05:00 PM

<b>Submitted By</b>	<b>Organization</b>	<b>Testifier Position</b>	<b>Present at Hearing</b>
Shanna Dean	Individual	Support	No

Comments:

Let us please support all of these bills that support local farms and feed our young minds better food. It can not happen soon enough.

**SB-1251**

Submitted on: 2/14/2021 4:33:58 PM

Testimony for EDU on 2/17/2021 3:05:00 PM

<b>Submitted By</b>	<b>Organization</b>	<b>Testifier Position</b>	<b>Present at Hearing</b>
Shannon Rudolph	Individual	Support	No

Comments:

Strongly support!

**SB-1251**

Submitted on: 2/15/2021 10:51:47 AM

Testimony for EDU on 2/17/2021 3:05:00 PM

<b>Submitted By</b>	<b>Organization</b>	<b>Testifier Position</b>	<b>Present at Hearing</b>
Thomas Brandt	Individual	Support	No

Comments:

Support

**SB-1251**

Submitted on: 2/15/2021 11:11:55 AM

Testimony for EDU on 2/17/2021 3:05:00 PM

<b>Submitted By</b>	<b>Organization</b>	<b>Testifier Position</b>	<b>Present at Hearing</b>
Barbara L. George	Individual	Support	No

Comments:

SUPPORT!

**SB-1251**

Submitted on: 2/15/2021 11:33:16 AM

Testimony for EDU on 2/17/2021 3:05:00 PM

<b>Submitted By</b>	<b>Organization</b>	<b>Testifier Position</b>	<b>Present at Hearing</b>
Michael deYcaza	Individual	Support	No

Comments:

It would be good to include incentives to surpass these goals.



**SB-1251**

Submitted on: 2/15/2021 12:30:33 PM

Testimony for EDU on 2/17/2021 3:05:00 PM

<b>Submitted By</b>	<b>Organization</b>	<b>Testifier Position</b>	<b>Present at Hearing</b>
Ted Bohlen	Individual	Support	No

Comments:

Hawaii imports over 90% of its food and needs to grow more locally. This bill will help develop markets for local food, while providing fresher and healthier food to schoolchildren. Please pass this bill!

**SB-1251**

Submitted on: 2/15/2021 4:20:39 PM

Testimony for EDU on 2/17/2021 3:05:00 PM

<b>Submitted By</b>	<b>Organization</b>	<b>Testifier Position</b>	<b>Present at Hearing</b>
Jane E Arnold	Individual	Support	No

Comments:

Please support SB 1251. Thank you.

**SB-1251**

Submitted on: 2/15/2021 8:00:52 PM

Testimony for EDU on 2/17/2021 3:05:00 PM

<b>Submitted By</b>	<b>Organization</b>	<b>Testifier Position</b>	<b>Present at Hearing</b>
sharon Levine	Individual	Support	No

Comments:

This seems to be a very good bill because local food production needs support in the way of dollars and also needs to feed the students here in Hawaii.

**SB-1251**

Submitted on: 2/15/2021 9:25:10 PM

Testimony for EDU on 2/17/2021 3:05:00 PM

<b>Submitted By</b>	<b>Organization</b>	<b>Testifier Position</b>	<b>Present at Hearing</b>
Elizabeth Hansen	Individual	Support	No

Comments:

We need to encourage farming in Hawaii. This bill will assist by adding more incentive to purchase locally produced food.

Mahalo.

Elizabeth Hansen, Hakalau HI 96710

**SB-1251**

Submitted on: 2/15/2021 10:28:42 PM

Testimony for EDU on 2/17/2021 3:05:00 PM

<b>Submitted By</b>	<b>Organization</b>	<b>Testifier Position</b>	<b>Present at Hearing</b>
Rodger Hansen	Individual	Support	No

Comments:

It is essential to encourage farming in Hawaii. This bill will assist by adding more incentive to purchase locally produced food.

Thank you,  
Rodger Hansen  
Hakalau HI 96710

**SB-1251**

Submitted on: 2/16/2021 9:20:03 AM

Testimony for EDU on 2/17/2021 3:05:00 PM

<b>Submitted By</b>	<b>Organization</b>	<b>Testifier Position</b>	<b>Present at Hearing</b>
Roxana Rosala	Individual	Support	No

Comments:

Supporting local agriculture is very important and our keiki should benefit from this and learn to source locally as they grow up themselves! This bill is great, if we can increase the percentage of locally sourced food, that would be even better, but for now, I strongly support this bill and our local farms. Thank you for your consideration.

**SB-1251**

Submitted on: 2/16/2021 10:08:16 AM

Testimony for EDU on 2/17/2021 3:05:00 PM

<b>Submitted By</b>	<b>Organization</b>	<b>Testifier Position</b>	<b>Present at Hearing</b>
Samantha Berberich	Individual	Support	No

Comments:

Having our children eat locally sourced food helps support their growing bodies and helps keep money on our islands. It's a win win.

**SB-1251**

Submitted on: 2/16/2021 1:25:01 PM

Testimony for EDU on 2/17/2021 3:05:00 PM

<b>Submitted By</b>	<b>Organization</b>	<b>Testifier Position</b>	<b>Present at Hearing</b>
Janet Pappas	Individual	Support	No

Comments:

Dear EDU and AEN Committee Members,

I strongly support the goals put forth in this bill: 25% of food in schools locally sourced by 2025 and 30% by 2030. This will mean healthier kids, happier farmers and less waste in the landfills.

Thank you.

Sincerely,

Jan Pappas

Aiea, Hawaii



**SB-1251**

Submitted on: 2/16/2021 12:37:39 PM

Testimony for EDU on 2/17/2021 3:05:00 PM

<b>Submitted By</b>	<b>Organization</b>	<b>Testifier Position</b>	<b>Present at Hearing</b>
Julia Paul	Individual	Support	No

Comments:

Please support this bill.

**LATE**

**SB-1251**

Submitted on: 2/16/2021 8:28:52 PM

Testimony for EDU on 2/17/2021 3:05:00 PM

<b>Submitted By</b>	<b>Organization</b>	<b>Testifier Position</b>	<b>Present at Hearing</b>
Jason Garlynd	Individual	Support	No

Comments:

Respected Public Officials,

As a resident of Kauai I believe that it is absolutely essential to provide high quality fresh food, to the growing minds of our most essential citizens, our children. This bill is an achievable baseline for encouraging and establishing a local food shed, a critical component for the survival and autonomy of the Hawaiian state, and a return to the opportunity to reap abundance in our unique and verdent environment. Act with haste to provide leadership and direction in the quest for increased affordability and availability of locally grown produce in our communities.

Sincerely, Jason Garlynd



**LATE**

**HIPHI Board**

- Kilikina Mahi, MBA  
Chair  
KM Consulting LLC*
- Michael Robinson, MBA, MA  
Immediate Past Chair  
Hawaii Pacific Health*
- JoAnn Tsark, MPH  
Secretary  
John A. Burns School of  
Medicine, Native Hawaiian  
Research Office*
- Debbie Erskine  
Treasurer  
Kamehameha Schools*
- Keshia Adolpho, LCSW  
Molokai Community Health  
Center*
- Keawe'aimoku  
Kaholokula, PhD  
John A. Burns School of  
Medicine, Department of  
Native Hawaiian Health*
- Mark Levin, JD  
William S. Richardson School  
of Law*
- Rachel Novotny, PhD, RDN,  
LD  
University of Hawaii at  
Mānoa, College of Tropical  
Agriculture and Human  
Resources*
- May Okihiro, MD, MS  
John A. Burns School of  
Medicine, Department of  
Pediatrics*
- Misty Pacheco, DrPH  
University of Hawaii at Hilo,  
Department of Kinesiology  
and Exercise Sciences*
- Garret Sugai  
Kaiser Permanente*
- Catherine Taschner, JD  
McCorriston Miller Mukai  
MacKinnon LLP*

Date: February 16, 2021

To: Senator Michelle Kidani, Chair  
Senator Donna Mercado Kim, Vice Chair  
Members of the Senate Committee on Education

Senator Mike Gabbard, Chair  
Senator Clarence Nishihara, Vice Chair  
Members of the Senate Committee on Agriculture and Environment

From: Lydi Bernal, Hawaii Farm to School Hui Coordinator

Re: SUPPORT for SB1251, Relating to the Hawaii Farm to School Program

Hearing: February 17, 2021 at 3:05pm in Conference Room 229

Aloha and thank you for the opportunity to testify in **support of SB1251 with a recommended amendment**, which authorizes the department of education to meet the local farm to school meal goal of fifteen percent of food served in public schools to be locally sourced by 2025 and thirty percent by 2030.

Hawaii Public Health Institute (HIPHI) works to advance policy and systems change to reduce disparities and improve the health of Hawaii residents. HIPHI is home to and testifies here on behalf of the Obesity Prevention Task Force<sup>i</sup> and the Hawaii Farm to School Hui<sup>ii</sup>, which **collectively represent over 60 organizations from across the islands.**

In order to highlight the importance of indigenous staple crops such as taro, breadfruit, and sweet potato in Hawaii's journey toward food security and food self-sufficiency, **we respectfully request that SB1251 be amended to include "staple starches" within the definition of "fresh local agricultural product" on Page 5, Line 4:**

"Fresh local agricultural product" means fruits, vegetables, **staple starches**, nuts, coffee, eggs, poultry and poultry products, livestock and livestock products, milk and milk products, aquacultural and maricultural products, and horticultural products one hundred per cent grown, raised, and harvested in the State.

It is important to note that USDA allows the following as a substitute for 1 serving of grains/bread within USDA-reimbursable meals: ½ cup poi, 1 cup taro, or 1 cup breadfruit.

*(continued on next page)*

We also reaffirm the importance of ensuring a holistic approach to farm to school, through the **integration of school gardens, on-campus farming, and other forms of 'āina-based education** together with the focus on improving school food.

Thank you for your strong support of farm to school!

Me Ke Aloha,

Lydi Bernal  
Hawai'i Farm to School Hui Coordinator

---

<sup>i</sup> Created by the legislature in 2012, the **Obesity Prevention Task Force** comprises of over 40 statewide organizations, and works to make recommendations to reshape Hawaii's school, work, community, and health care environments, making healthier lifestyles obtainable for all Hawai'i residents.

<sup>ii</sup> Founded in 2010, the **Hawai'i Farm to School Hui** is a statewide network comprising five island-level networks, community organizations, schools, state agencies, and other food systems stakeholders with a collective mission to strengthen Hawaii's farm to school movement. The three pillars of successful farm to school programs are: 1) school gardens and on-campus farms, 2) education, and 3) school food improvements through local procurement.

**LATE**

**SB-1251**

Submitted on: 2/17/2021 7:57:16 AM  
Testimony for EDU on 2/17/2021 3:05:00 PM

Submitted By	Organization	Testifier Position	Present at Hearing
Nanea Lo	Individual	Support	No

Comments:

Hello,

My name is Nanea Lo and I'm writing to strongly support SB125. Being a product of the public education system of Hawai'i I know how important feeding our children are here. I believe that sustainable agriculture should be supported at all costs.

This bill authorizes the DOE to meet the local farm to school meal goal of 15% of the food served in public schools to be locally sourced by 2025 and 30% by 2030.

Please support this bill.

me ke aloha 'Ä• ina,

Nanea Lo