

DAVID Y. IGE  
GOVERNOR



CRAIG K. HIRAI  
DIRECTOR  
  
ROBERT YU  
DEPUTY DIRECTOR

EMPLOYEES' RETIREMENT SYSTEM  
HAWAII EMPLOYER-UNION HEALTH BENEFITS TRUST FUND  
OFFICE OF THE PUBLIC DEFENDER

**STATE OF HAWAII**  
**DEPARTMENT OF BUDGET AND FINANCE**  
P.O. BOX 150  
HONOLULU, HAWAII 96810-0150

ADMINISTRATIVE AND RESEARCH OFFICE  
BUDGET, PROGRAM PLANNING AND  
MANAGEMENT DIVISION  
FINANCIAL ADMINISTRATION DIVISION  
OFFICE OF FEDERAL AWARDS MANAGEMENT (OFAM)

**WRITTEN ONLY**  
TESTIMONY BY CRAIG K. HIRAI  
DIRECTOR, DEPARTMENT OF BUDGET AND FINANCE  
TO THE HOUSE COMMITTEE ON CULTURE, ARTS, & INTERNATIONAL AFFAIRS  
ON  
SENATE BILL NO. 1023, S.D. 2

**March 17, 2021**  
**10:00 a.m.**  
**Room 329**

RELATING TO TAXATION

The Department of Budget and Finance (B&F) offers comments on Senate Bill (S.B.) No. 1023, S.D. 2.

S.B. No. 1023, S.D. 2, amends Section 237D-6.5, HRS, to require fixed allocations of Transient Accommodations Tax (TAT) revenues in the amounts of \$750,000 to Iolani Palace and \$1,500,000 to the Bernice Pauahi Bishop Museum.

B&F is concerned that this bill would decrease TAT revenue allocations to the State general fund by \$2,250,000 and impact the State's share of direct federal aid from the American Rescue Plan Act of 2021 (ARPA). Provisions of the ARPA specially state:

*"A state or territory shall not use the funds provided under this section or transferred pursuant to section 603(c)(4) to either directly or indirectly offset a reduction in the net tax revenue of such state or territory resulting from a change in law, regulation, or administrative interpretation during the covered period that reduces any tax (by providing for a reduction in a rate, a rebate, a deduction, a credit, or otherwise) or delays the imposition of any tax or tax increase."*

B&F notes that any reduction in State tax revenues could result in reduced ARPA funding. Hawai'i's estimated allocation of ARPA funds is in excess of \$1.6 billion and is critical to mitigating the negative financial impacts the COVID-19 pandemic has had on the State budget.

Thank you for your consideration of our comments.

DAVID Y. IGE  
GOVERNOR OF  
HAWAII



SUZANNE D. CASE  
CHAIRPERSON  
BOARD OF LAND AND NATURAL RESOURCES  
COMMISSION ON WATER RESOURCE MANAGEMENT

ROBERT K. MASUDA  
FIRST DEPUTY

M. KALEO MANUEL  
DEPUTY DIRECTOR - WATER

AQUATIC RESOURCES  
BOATING AND OCEAN RECREATION  
BUREAU OF CONVEYANCES  
COMMISSION ON WATER RESOURCE MANAGEMENT  
CONSERVATION AND COASTAL LANDS  
CONSERVATION AND RESOURCES ENFORCEMENT  
ENGINEERING  
FORESTRY AND WILDLIFE  
HISTORIC PRESERVATION  
KAHOOLAWE ISLAND RESERVE COMMISSION  
LAND  
STATE PARKS

STATE OF HAWAII  
DEPARTMENT OF LAND AND NATURAL RESOURCES

POST OFFICE BOX 621  
HONOLULU, HAWAII 96809

Testimony of  
SUZANNE D. CASE  
Chairperson

Before the House Committee on  
CULTURE, ARTS, & INTERNATIONAL AFFAIRS

Wednesday, March 17, 2021  
10:00 AM

State Capitol, Via Videoconference, Conference Room 329

In consideration of  
SENATE BILL 1023, SENATE DRAFT 2  
RELATING TO TAXATION

Senate Bill 1023, Senate Draft 2 proposes to allocate fixed amounts of the Transient Accommodations Tax (TAT) revenues to provide funding for the Bernice Pauahi Bishop Museum and 'Iolani Palace. **The Department of Land and Natural Resources (Department) supports funding cost elements for 'Iolani Palace State Monument and offers the following comments.**

The Department executed a 25-year general lease with the Friends of 'Iolani Palace (Friends) to manage and operate 'Iolani Palace, 'Iolani Palace Barracks (Hale Koa), the Coronation Pavilion and the Kanaina Building. The Department's Division of State Parks (State Parks) regulates and manages the various public special use activities and events of the adjacent four quadrants that comprise the grounds surrounding the buildings, and authorizes events that are managed by the Friends that are a primary source of operating revenue. State Parks also administers and executes capital improvement projects for the buildings and appurtenant structures. The Department of Accounting and General Services performs all the grounds and tree maintenance functions and manages the parking areas surrounding the Palace and oversee the State Archives Building.

The Friends have funded its operations entirely from earned revenues, donations, and grants (both private and government) for such items as salaries & benefits, repair and maintenance, and regular expenses of the Palace such as electricity, heating, ventilation and air conditioning maintenance, water for chillers and a security camera contract. During the pandemic, with the Palace being closed and now visitation by appointment, the earned revenue from visitors and events has almost expired and the Friends have been losing about \$100,000 a month to maintain basic services.

The Department recognizes, that as the only royal palace in the United States, and due to its intrinsic value as a significant historic building, as an iconic symbol for Hawaiian culture, and with a poignant role representing the Hawaiian monarchy, that a stable baseline funding source is greatly warranted. The tourism industry has depicted the Palace as an enticing backdrop for marketing and is a popular tourism venue as well, so the nexus to applying a portion of TAT for the management is sound.

This fixed amount of \$750,000 of the TAT would provide the Friends with a consistent funding source to upkeep the precious and valuable antiquities of Hawai'i's history and the extraordinary building that contains them. This measure is very encouraging and the Department deeply appreciates the interest to add value and more importantly, sustain one of the most iconic features in the State of Hawai'i.

Thank you for the opportunity to comment on this measure.

**SB-1023-SD-2**

Submitted on: 3/16/2021 4:59:50 PM

Testimony for CAI on 3/17/2021 10:00:00 AM

<b>Submitted By</b>	<b>Organization</b>	<b>Testifier Position</b>	<b>Present at Hearing</b>
Karen Kosasa	University of Hawai'i	Support	No

Comments:

Aloha Senators,

I fully support SB1023 SD1 for the Bishop Museum and 'Iolani Palace. These are two incredibly important institutions. I am the director of the Museum Studies Graduate Certificate Program at the University of Hawai'i, and my students learn a great deal from visiting both institutions and seeing their displays of historic materials and objects, and hearing from their knowledgeable staff. In fact, this week my undergraduate students are making individual visits to Bishop Museum, and in November 2020, my graduate students and I went on a field trip to 'Iolani Palace while observing social distancing protocols. From our visits, we learn about the importance of caring for collection objects, creating exhibits that help visitors understand the historical and cultural significance of the objects, and the importance of presenting diverse perspectives. My students have served as interns at both institutions where they learn things that cannot be taught in a regular classroom and helps they see the value of museum work. The staff and administrators at both institutions are incredibly hard working and could easily get jobs outside the museum world where they would be paid higher salaries. However, they love their work and feel an obligation to care for and protect the cultural treasures of the Hawaiian culture and the multiethnic communities of the islands, so they stay and generously share their knowledge with us. Please, please pass SB1023 SD1 for these two jewels of our state! They need the financial resources to keep their buildings in working order and their collections safe for future generations.

Sincerely,

Karen Kosasa, Director, Museum Studies Graduate Certificate Program

Department of American Studies

University of Hawai'i at Manoa

**SB-1023-SD-2**

Submitted on: 3/15/2021 9:15:50 AM

Testimony for CAI on 3/17/2021 10:00:00 AM

<b>Submitted By</b>	<b>Organization</b>	<b>Testifier Position</b>	<b>Present at Hearing</b>
Elena Farden	Kanaeokana	Support	No

Comments:



**March 15, 2021**

**TO: House Committee on Culture, Arts, & International Affairs**

**FR: Kanaeokana Kula Hawai'i Network**

**RE: SB1023 SD2, Relating to Taxation**

**Aloha Representative Gates, Chair and Representative LoPresti, Vice Chair**

**Kanaeokana, the Kula Hawai'i Network which includes membership of DOE Hawaiian Language Immersion Program sites, all 17 Hawaiian Focused Charter Schools (HFCS), and over 50 other Hawaiian education organizations, is in support of SB1023 to allocate \$750,000 to provide funding for 'Iolani Palace and \$1,500,000 to provide funding for Bishop Museum from the Transient Accommodations Tax.**

**Kanaeokana is in full support of using TAT funding to support these two critical institutions because of the immense educational value they provide to the Hawaiian Education System. The knowledge held and curated by the two institutions connects today's learners with the past and they both need to be supported by our tax dollars.**

**As a Hawaiian education network, Kanaeokana's mission is to collaboratively develop and strengthen a Native Hawaiian education system—built on a strong 'Ā• lelo Hawai'i and 'ike Hawai'i foundation—to grow and sustain aloha 'Ā• ina leaders.**

**Therefore, we humbly ask that you support this bill and urge the Committee to PASS SB1023 SD2.**



**Me Ka 'Oia'i'o**

**Mahina Paishon-Duarte, Co-Chair**

**Elena Farden, Co-Chair**

**KÅ• mike Advocacy**

**Kanaeokana Kula Hawai'i Network**



Kamehameha Schools®



Papa Ola Lokahi  
Nana I Ka Pono Na Ma



**Before the  
House Committee on  
Culture, Arts, & International Affairs**

**Wednesday, March 17, 2021  
10:00 AM  
State Capitol, Conference Room 329 via Video Conference**

**In SUPPORT of  
SENATE BILL 1023 SD2**

Representative Gates, Chair  
Representative LoPresti, Vice Chair  
House Committee on Culture, Arts, & International Affairs

RE: Testimony in SUPPORT of SB1023 SD2, Relating to Taxation

The listed organizations write in SUPPORT of SB1023 HD2, which would allocate \$750,000 to provide funding for 'Iolani Palace and \$1,500,000 to provide funding for Bishop Museum from the Transient Accommodations Tax.

Both 'Iolani Palace and Bishop Museum have deep roots in Hawai'i's history and continue to inspire and educate our communities, Hawai'i, and the world. These wahi pana have witnessed the tide and time of change in Hawai'i and have aged over the many years. Much needed repairs and staff are needed to ensure that they forever remain for the people of Hawai'i. 'Iolani Palace and Bishop Museum represent the very best of us. We are resilient, we are grounded, and we are Hawaiian.

We humbly ask that you support this bill and urge the Committee to PASS SB1023 SD2. Mahalo piha nō.

## Background Information

**'Iolani Palace** was the official residence for Hawai'i's last reigning monarchs. It was also the capitol building for the Republic, Territory, and eventually the State of Hawai'i. 'Iolani Palace represents a poignant time in Hawai'i's past that inspires our people as they look to the future.

For more than a half a century, The Friends of 'Iolani Palace have restored, repaired and protected the Palace. They have shared the story of Hawaii's monarchs with Hawai'i's residents, school children and visitors from around the world. Their revenues come from ticket and gift shop sales, as well as memberships and donations. The pandemic devastated the organization. This bill would provide much needed funding for them to continue their work to ensure this important historic site is around for generations to come.

**The Bishop Museum** stewards more than 25 million catalogued objects, and actively generates and shares knowledge associated with its collections. Its work supports over 50 state and federal government agencies, departments, and affiliated organizations; and without whom many basic questions concerning Hawaii's people, plants, and animals could not be answered with efficiency and confidence. The collections include over 1.2 million cultural artifacts, representing Native Hawaiian, Pacific Island, and Hawai'i immigrant life; more than 125,000 historical publications, including many in the Hawaiian language; 1 million historical photographs, films, works of art, and publications; and over 22 million plant and animal specimens.

Museum researchers have discovered over 17,000 species of plants, animals, and insects throughout the Pacific region, and have made countless discoveries related to the migration, settlement, and daily life of Pacific peoples. The Museum's educational programs provide science and cultural education opportunities to thousands of Hawai'i's schoolchildren each year, and it is estimated that the Museum has hosted more than 10 million visitors over its history.

DATE; 2/10/2021

**SUBJECT: Senate Bills SB1023**

Aloha All

I am Mark Kalahela, the Facilities Chairperson for the Friends of Iolani Palace. I understand that service on this Board of Directors is a privilege and understand that with that privilege comes the kuleana to do what is needed.

I have owned & operated a mechanical contracting company since 1984. I see first hand situations of the effects of differed maintenance on facilities on a daily basis. While we have done what we could within the budget we had to work with, it is clear that we need help.

I Mark R. Kalahela I fully support SB1023 that would give Iolani Palace a percentage of the TAT, or Transient Accommodations Tax. Iolani Palace is a National historic landmark. It was the home to Hawaii's last reigning alii, and later the offices for the Republic, Territorial and State governments.

Iolani Palace will always be the symbol of Hawaiian Sovereignty, of our Alii and a strong symbol of Hawaii's past, it's present and it's future.

Please help us continue to share "our" story.

MAHALO

MARK R. KALAEHELE  
PRESIDENT  
ALOHA STATE SERVICES, LTD.  
FACILITIES CHAIRPERSON  
THE FRIENDS OF IOLANI PALACE



Testimony of the  
OAHU ECONOMIC DEVELOPMENT BOARD (OEDB)  
**In Support of SB 1023 SD2**  
**Relating to Taxation**

COMMITTEE ON CULTURE, ARTS, & INTERNATIONAL AFFAIRS  
Rep. Cedric Asuega Gates, Chair  
Rep. Matthew S. LoPresti, Vice Chair

Wednesday, March 17, 2021  
10:00 A.M.  
Conference Room 329  
Via Videoconference  
State Capitol  
415 South Beretania Street

Aloha Chair Gates, Vice Chair LoPresti and Committee Members,

Iolani Palace is a State Asset (Owned building) that is cared for by the Friends of Iolani Palace. As a State Asset we appreciate that the State Legislature is looking at options to support the much needed maintenance and care to continue to have the Palace be a resource now and into the future.

The significant financial resources to care for the Palace in the past several decades have come primarily from Ticket and Gift shop sales, private contributions and fundraising efforts of the Friends of Iolani Palace, as well as project based grants.

As all businesses the pandemic has revealed how vulnerable Iolani Palace is thru the dependency on tourism and at the same time how so many in Hawaii have a love for the Palace. Truly a wahipana.

As a wahipana for our residents and a significant destination for our visitors it does make absolute sense that a percentage of the Transit Accommodations Tax be dedicated to the maintenance and well-being of the palace and I strongly support SB1023 SD2.

Mahalo,

Pono Shim  
CEO, Oahu Economic Development Board  
Chairman, Friends of Iolani Palace



**SB-1023-SD-2**

Submitted on: 3/16/2021 8:38:13 AM

Testimony for CAI on 3/17/2021 10:00:00 AM

<b>Submitted By</b>	<b>Organization</b>	<b>Testifier Position</b>	<b>Present at Hearing</b>
Leilani Williams-Solomon	The Friends of Iolani Palace	Support	No

Comments:

Aloha, I am Leilani Williams-Solomon. I fully support SB1023, SD2 that would allocate \$750,000 to Iolani Palace, from the TAT, or Transient Accommodations Tax. Iolani Palace is a National historic landmark, and a symbol of hope and perseverance for all of the people of Hawaii . It was the home to Hawaii's last reigning alii, and later the offices for the Provisional, Republic, Territorial and State governments.

The Friends of Iolani Palace are a non-profit organization that manages and maintains this iconic building and its contents. They exist on ticket and gift shop sales and donations. COVID has devastated their revenues, and they are losing tens of thousands of dollars each month. The funding from the TAT will help The Friends of Iolani Palace immensely in their efforts to preserve and protect the Palace and share its story with Hawaii and the world.

Mahalo for the opportunity to express this support, and for considering this very important measure.



# IOLANI PALACE

Post Office Box 2259 Honolulu, HI 96804-2259 Telephone (808) 522-0822 FAX (808) 532-1051

**Testimony of  
PAULA AKANA  
Executive Director**

**Before the House Committee on  
Culture, Arts, & International Affairs**

**Wednesday, March 17, 2021  
10:00 AM  
House Conference Room 329 Videoconference**

**In Consideration of  
SENATE BILL 1023 SD2  
RE: Testimony in SUPPORT of SB1023 SD2, Relating to Taxation**

Aloha Chair Gates, Vice Chair LoPresti and Committee Members,

I am Paula Akana, Executive Director of The Friends of Iolani Palace. We strongly support SB 1023 SD2.

For more than a half a century, The Friends of Iolani Palace has taken on the kuleana to malama this wahi pana. Our organization has carefully worked to restore, repair and protect Iolani Palace. We have shared her story and the story of Hawaii's monarchs with people from Hawaii and around the world, as well as with thousands of Hawaii school children annually.

Our revenues come from ticket and gift shop sales, memberships and donations. That all stopped a year ago, this week, when we were forced to close our doors due to COVID-19. We cut our salaries and terminated nearly half our staff. These tough cuts, along with the aloha from the community have helped us to keep our doors open today. However, we are only bringing in about 15% of our pre-COVID-19 revenues and are running a deficit of \$60,000 – \$100,000 each month. We have estimated funds to last us through the end of this calendar year.

The \$750,000 from the TAT would help our organization immensely. It would be the lifeline we need to remain open to share the poignant history of Hawaii with the world. It would also help The Friends of Iolani Palace to continue our work to malama the Palace, which under HRS 6E-35, was designated as the official State of Hawaii Museum of Monarchy History.

We mahalo your consideration and strongly urge the PASSAGE of SB 1023 SD2 to protect this priceless place.



**SB-1023-SD-2**

Submitted on: 3/16/2021 9:20:10 AM

Testimony for CAI on 3/17/2021 10:00:00 AM

<b>Submitted By</b>	<b>Organization</b>	<b>Testifier Position</b>	<b>Present at Hearing</b>
Maile Melrose	Friends of Amy B. H. Greenwell Ethnobotanical Gard	Support	No

Comments:

Aloha from Kona and thank you for considering this important Senate Bill 1023 to guarantee funding for two of our state's premier historic treasures. As president of a nonprofit organization dedicated to increasing public appreciation for our Hawaiian culture through exposure to Hawaiian plants, I urge you to take this important step. Without a secure and reliable financial foundation, nonprofit organizations cannot function well. Resources, time and expensive manpower are wasted in hunting down dollars instead of creating new programs and celebrating our human treasures. Our visitors expect Hawai'i to be a FIRST CLASS destination, and that means we need our museums to be vibrant, well funded, and beautiful. State government should be helping these museums flourish, especially after a year like 2020. But the truth is, government backed funding should be a proud accomplishment of our State Legislature, permanently.

As president of Friends of Amy B. H. Greenwell Ethnobotanical Garden on the island of Hawaii, I know we operate because of support from Bernice Pauahi Bishop Museum. They are helping us sustain a world class visitor attraction in Kona because they care about the arc of Hawaii's history and culture. Our visitor industry demands authentic Hawaiian experiences. Look no further than 'Iolani Palace and the Bishop Museum to see the VERY BEST our state has to offer.

Please pass this Bill and ensure a bright future for tourism, education, and cultural pride.

Thank you for this opportunity to testify from Kona.

Aloha,

Maile Melrose

**SB-1023-SD-2**

Submitted on: 3/16/2021 9:33:30 AM

Testimony for CAI on 3/17/2021 10:00:00 AM

<b>Submitted By</b>	<b>Organization</b>	<b>Testifier Position</b>	<b>Present at Hearing</b>
Mark T. Shklov	The Friends of Iolani Palace	Support	No

Comments:

**Testimony of Mark T. Shklov in Support of Senate Bill 1023 SD2**

My name is Mark T. Shklov.

I am a Hawaii Lawyer and a Member of The Board of Directors of The Friends of Iolani Palace.

The Friends of Iolani Palace is the non-profit corporation whose Purpose is “to preserve, restore, interpret, share and celebrate the unique cultural, historical, and spiritual qualities of Iolani Palace and its grounds for the benefit of and to serve Native Hawaiians, the People of Hawaii, and the World”.

I strongly support SB1023, SD2 that would allocate \$750,000 to Iolani Palace from the Transient Accommodations Tax (TAT).

I believe that King Kalakaua was a visionary leader who looked into the future of the World and built Iolani Palace to be a working, welcoming, and inspirational symbol of Aloha for Hawaii and the international community. I believe that King Kalakaua intended Iolani Palace to bring the People of Hawaii together and to be used by the People of Hawaii to develop good, positive, long lasting, and meaningful relationships.

The Friends of Iolani Palace has lost tens of thousands of dollars each month due to the Covid-19 Pandemic which has forced the closure of the Palace. Funding from the TAT will help The Friends of Iolani Palace preserve and protect the Palace and share its story with Hawaii and the World.

Despite all the problems in Hawaii and the World today, Iolani Palace can continue to be a source of inspiration and friendship for all of us and generations to come, if it is properly maintained.

Mahalo,

Mark T. Shklov



# HISTORIC HAWAII FOUNDATION

**TO:** Representative Cedric Asuega Gates, Chair  
Representative Matthew S. LoPresti, Vice Chair  
Committee on Culture, Arts & International Affairs (CAI)

**FROM:** Kiersten Faulkner, Executive Director  
Historic Hawai'i Foundation

**Committee:** Wednesday, March 17, 2021  
10:00 a.m.  
Via Videoconference/Conference Room 329

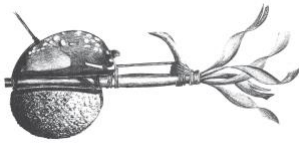
**RE:** **SB 1023 SD2, Relating to Taxation**

On behalf of Historic Hawaii Foundation (HHF), I am writing in **support for SB 1023 SD2**. The bill would allocate fixed amounts of the transient accommodations tax revenues to provide funding for the Bernice Pauahi Bishop Museum and Iolani Palace.

The natural, historic, and cultural resources of Hawai'i are a great legacy and irreplaceable treasures. HHF strongly supports measures that lead to investments in preserving and enhancing these resources, especially historic places that help keep Hawaii's stories alive for the education and inspiration of present and future generations.

The bill would provide a source of funding for preservation, rehabilitation and restoration projects at two of the most significant historic buildings in the state. Bishop Museum and Iolani Palace have been recognized for their historic, cultural and design significance through formal historic designations, including recognition as State Monuments, National Historic Landmarks, and listing on the Hawai'i State or National Register of Historic Places.

Thank you for the opportunity to comment.



## SOCIETY FOR HAWAIIAN ARCHAEOLOGY

P.O. BOX 22458 HONOLULU, HAWAII 96823

TO: Rep. Cedric Asuega Gates, Chair  
Rep. Matthew S. LoPresti, Vice Chair  
House Committee on Culture, Arts & International Affairs

FROM: Mara Mulrooney, Ph.D.  
President, Society for Hawaiian Archaeology  
membership@hawaiianarchaeology.org

HEARING: March 17, 2021, 10:00 AM, Conference Room 329

SUBJECT: Testimony in **support** of SB 1023 SD2, Relating to Taxation

I am Mara Mulrooney, President of the Society for Hawaiian Archaeology (SHA). We have over 150 members including professional archaeologists and advocates of historic preservation. On behalf of SHA, we **support** and offer comments on SB 1023 SD2 (Relating to Taxation).

The intent of SB 1023 is to require a fixed amount of the transient accommodations tax to be allocated to provide funding for the Bernice Pauahi Bishop Museum and Iolani Palace. This bill would ensure consistent funding of these important stewards of our State's heritage.

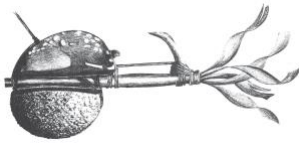
As the State Museum of Hawai'i, Bishop Museum's work is of great cultural, scientific, and intrinsic value to the State and it is imperative that the State of Hawai'i support this important institution on a regular basis to ensure that its operations are adequately funded. Bishop Museum stewards the world's largest collection of Hawaiian and Oceanic materials, including unique and irreplaceable collections of cultural artifacts and archival materials that are critical to the perpetuation of Native Hawaiian culture and knowledge. Its natural history collections provide information crucial to protecting native species and habitats. These have great importance to cultural practices and the heritage of the Hawaiian Islands as well. In addition, the Museum provides vital educational programs and resources to support the educational development of Hawai'i's school age children and the museum works in collaboration with the University of Hawaii to train archaeologists and other professionals to enter the workforce and contribute to historic preservation initiatives. These activities are of tremendous importance to the State and to the work of my organization.

Iolani Palace stewards significant cultural collections that are vital to Hawaii's history, especially the Hawaiian Monarchy. Iolani Palace is registered as a significant historic building on the National Register of Historic Places but does not currently have adequate funding to ensure that this *wahi pana*, or storied place, is protected and preserved for future generations. Iolani Palace must be safeguarded and it must be consistently supported by the State of Hawai'i to ensure that funds are available when the need arises to complete renovations and modernization measures that will ensure the conservation of this historic place and the collections preserved therein.

Should you have any questions, please feel free to contact me at the above email. Mahalo for your consideration of our testimony.

<https://hawaiianarchaeology.org/>

The Society for Hawaiian Archaeology is a registered tax-exempt organization established in 1980 to promote and stimulate interest and research in the archaeology of the Hawaiian Islands, encourage a more rational public appreciation of the aims and limitations of archaeological research, serve as a bond among those interested in Hawaiian archaeology, both professionals and non-professionals, and aid in directing their efforts into more scientific channels as well as encourage the publication of their results, advocate and assist in the conservation of archaeological data, discourage unethical commercialism in the archaeological field and work for its elimination.



## SOCIETY FOR HAWAIIAN ARCHAEOLOGY

P.O. BOX 22458 HONOLULU, HAWAII 96823

<https://hawaiianarchaeology.org/>

The Society for Hawaiian Archaeology is a registered tax-exempt organization established in 1980 to promote and stimulate interest and research in the archaeology of the Hawaiian Islands, encourage a more rational public appreciation of the aims and limitations of archaeological research, serve as a bond among those interested in Hawaiian archaeology, both professionals and non-professionals, and aid in directing their efforts into more scientific channels as well as encourage the publication of their results, advocate and assist in the conservation of archaeological data, discourage unethical commercialism in the archaeological field and work for its elimination.

**SB-1023-SD-2**

Submitted on: 3/15/2021 5:12:04 PM

Testimony for CAI on 3/17/2021 10:00:00 AM

<b>Submitted By</b>	<b>Organization</b>	<b>Testifier Position</b>	<b>Present at Hearing</b>
Allison Saunders	Individual	Support	No

Comments:

Aloha, my name is Allison Saunders and I fully support SB1023, SD2 that would allocate \$750,000 to Iolani Palace, from the TAT, or Transient Accommodations Tax. Iolani Palace is a National historic landmark. It was the home to Hawaii's last reigning alii, and later the offices for the Provisional, Republic, Territorial and State governments.

The Friends of Iolani Palace are a non-profit organization that manages and maintains this iconic building and its contents. They exist on ticket and gift shop sales and donations. COVID has devastated their revenues, and they are losing tens of thousands of dollars each month. The funding from the TAT will help The Friends of Iolani Palace immensely in their efforts to preserve and protect the Palace and share its story with Hawaii and the world.

Mahalo,

Allison

**SB-1023-SD-2**

Submitted on: 3/15/2021 5:13:18 PM

Testimony for CAI on 3/17/2021 10:00:00 AM

<b>Submitted By</b>	<b>Organization</b>	<b>Testifier Position</b>	<b>Present at Hearing</b>
Gerard K Akaka	Individual	Support	No

Comments:

Aloha, I am Gerard Akaka. I fully support SB1023, SD2 that would allocate \$750,000 to Iolani Palace, from the TAT, or Transient Accommodations Tax. Iolani Palace is a National historic landmark. It was the home to Hawaii's last reigning alii, and later the offices for the Provisional, Republic, Territorial and State governments.

1. Friends of Iolani Palace are a non-profit organization that manages and maintains this iconic building and its contents. They exist on ticket and gift shop sales and donations. COVID has devastated their revenues, and they are losing tens of thousands of dollars each month. The funding from the TAT will help The Friends of Iolani Palace immensely in their efforts to preserve and protect the Palace and share its story with Hawaii and the world.



**SB-1023-SD-2**

Submitted on: 3/16/2021 7:10:01 AM

Testimony for CAI on 3/17/2021 10:00:00 AM

<b>Submitted By</b>	<b>Organization</b>	<b>Testifier Position</b>	<b>Present at Hearing</b>
Faylene Mahina Duarte	Individual	Support	No

Comments:

Aloha, My name is Mahina Paishon-Duarte. I fully support SB1023, SD2 that would allocate \$750,000 to Iolani Palace, from the TAT, or Transient Accommodations Tax. Iolani Palace is a National historic landmark. It was the home to Hawaii's last reigning alii, and later the offices for the Provisional, Republic, Territorial and State governments.

The Friends of Iolani Palace are a non-profit organization that manages and maintains this iconic building and its contents. They exist on ticket and gift shop sales and donations. COVID has devastated their revenues, and they are losing tens of thousands of dollars each month. The funding from the TAT will help The Friends of Iolani Palace immensely in their efforts to preserve and protect the Palace and share its story with Hawaii and the world.

Respectfully,

Mahina Paishon-Duarte

**SB-1023-SD-2**

Submitted on: 3/16/2021 7:39:29 AM

Testimony for CAI on 3/17/2021 10:00:00 AM

<b>Submitted By</b>	<b>Organization</b>	<b>Testifier Position</b>	<b>Present at Hearing</b>
Kekoa Kaluhiwa	Individual	Support	No

Comments:

I support allocating a portion of TAT revenues to support 'Iolani Palace. Mahalo for your consideration of this request.

**SB-1023-SD-2**

Submitted on: 3/16/2021 8:24:13 AM

Testimony for CAI on 3/17/2021 10:00:00 AM

<b>Submitted By</b>	<b>Organization</b>	<b>Testifier Position</b>	<b>Present at Hearing</b>
Rachel Hodara Nelson	Individual	Support	No

Comments:

Aloha, I support SB1023 SD1 for the Bishop Museum and Iolani Palace, which requires a fixed amount of the transient accommodations tax to be allocated to provide funding for the Bernice Pauahi Bishop Museum and Iolani Palace. This bill would ensure consistent funding of these important stewards of our State's heritage. The Bishop Museum houses and creates work of great cultural, scientific, and intrinsic value to the State of Hawai'i. The Bishop Museum stewards the world's largest Hawaiian and Oceanic collections that are critical to Native Hawaiian culture and knowledge. Its natural history collections provide information crucial to protecting native species and habitats. In addition, the Museum provides vital educational programs and resources for the development of Hawai'i's children. These activities are of tremendous importance to the State, and must be supported at a much higher level than they are today.

Mahalo for receiving my testimony,

Rachel

**SB-1023-SD-2**

Submitted on: 3/16/2021 8:25:05 AM

Testimony for CAI on 3/17/2021 10:00:00 AM

<b>Submitted By</b>	<b>Organization</b>	<b>Testifier Position</b>	<b>Present at Hearing</b>
Brian Kealoha	Individual	Support	No

Comments:

Aloha -

I am tesitfyng in strong support of SB1023. Iolani Palace is a national historic landmark. It was the home to Hawaii's last reigning alii.

The Friends of Iolani Palace have funded its operations entirely from earned revenues, donations, and grants for as salaries, repair and maintenance (which has been extensive on this aging historic buidling), and regular expenses of the Palace such as electricity which is very expensive as the Palace needs to constantly run the air conditioning system to manage humidity and preserve the many treasures in the Palace.

The Palace has always been a popular tourism spot which makes it naturual to apply a portion of TAT for the management and preservation a very small investment. This fixed amount of \$750,000 of the TAT would provide the Friends with a consistent funding source to upkeep the precious and valuable antiquities of Hawai'i's history and the iconic building itself.

Mahalo for the opportunity to testify in strong support.

Brian Kealoha

Representative Cedric Asuega Gates, Chairman  
Representative Matthew S. LoPresti, Vice Chair

Regarding SB1023: Iolani Palace, Bishop Museum funding, TAT, Funding

Wednesday, March 17, 2021, 10 a.m. via teleconference

Support of SB1023, in particular the funding being proposed for Iolani Palace.

Aloha Chair Gates, Vice Chair LoPresti and Members of the House Committee on Culture, Arts and International Affairs.

My name is DeGray Vanderbilt. I am a member of Ka ‘Ohana O Kalaupapa, but I am submitting this testimony as an individual.

Ka ‘Ohana O Kalaupapa (‘Ohana) is a non-profit, Native Hawaiian Organization that was formed by many of the residents of Kalaupapa and their extended ‘ohana and longtime friends of the Kalaupapa Community in 2003. The organization was formed as the patient residents saw their numbers growing smaller. They wanted to create an organization that would ensure their voices would continue to be heard and that the legacy of Kalaupapa as they envisioned it would become a reality.

Iolani Palace is a special venue that allows the history of the amazing Royal Family to continue to be heard and understood. Currently, the ‘Ohana has an extensive exhibit on display at the Palace that highlights the Royal Family’s incredible relationship with the people of Kalaupapa, something most people are unaware of.

The funds being considered in SB1023 will greatly assist the Palace in its efforts to recover from the devastating impacts of the Covid pandemic and would help the Palace remain operational. Currently, the Palace, as I understand it, is dealing with an operational deficit of approximately \$75,000 a month. The funding would assist in restoring staff and salaries cut because of the Covid crisis.

Thank you for this opportunity to provide your Committee with my testimony. I hope that the funding called for in the Bill for Iolani Palace meets with your approval.

Respectfully Submitted,

DeGray Vanderbilt



**SB-1023-SD-2**

Submitted on: 3/16/2021 8:57:39 AM

Testimony for CAI on 3/17/2021 10:00:00 AM

<b>Submitted By</b>	<b>Organization</b>	<b>Testifier Position</b>	<b>Present at Hearing</b>
Julie Crabb	Individual	Support	No

Comments:

Aloha,

I, Julie Crabb, fully support SB1023, SD2 that would allocate \$750,000 to Iolani Palace, from the TAT, or Transient Accommodations Tax. Iolani Palace is a National historic landmark. It was the home to Hawaii's last reigning alii, and later the offices for the Provisional, Republic, Territorial and State governments.

Friends of Iolani Palace are a non-profit organization that manages and maintains this iconic building and its contents. They exist on ticket and gift shop sales and donations. COVID has devastated their revenues, and they are losing tens of thousands of dollars each month. The funding from the TAT will help The Friends of Iolani Palace immensely in their efforts to preserve and protect the Palace and share its story with Hawaii and the world.

Mahalo,

Julie Crabb

Aloha,

My name is Billy Pieper and I fully support SB1023, SD2 that would allocate \$750,000 to Iolani Palace, from the TAT, or Transient Accommodations Tax. Iolani Palace is a National historic landmark. It was the home to Hawaii's last reigning alii, and later the offices for the Provisional, Republic, Territorial and State governments.

The Friends of Iolani Palace are a non-profit organization that manages and maintains this iconic building and its contents. They exist on ticket and gift shop sales and donations. COVID has devastated their revenues, and they are losing tens of thousands of dollars each month. The funding from the TAT will help The Friends of Iolani Palace immensely in their efforts to preserve and protect the Palace and share its story with Hawaii and the world.

Mahalo for your consideration,

Billy Pieper

The Friends of Iolani Palace Board of Director



**SB-1023-SD-2**

Submitted on: 3/16/2021 9:47:13 AM

Testimony for CAI on 3/17/2021 10:00:00 AM

<b>Submitted By</b>	<b>Organization</b>	<b>Testifier Position</b>	<b>Present at Hearing</b>
Malcolm Inamine	Individual	Support	No

Comments:

Aloha, I am Malcolm Inamine. I fully support SB1023, SD2 that would allocate \$750,000 to Iolani Palace, from the TAT, or Transient Accommodations Tax. Iolani Palace is a National historic landmark. It was the home to Hawaii's last reigning alii, and later the offices for the Provisional, Republic, Territorial and State governments.

1. Friends of Iolani Palace are a non-profit organization that manages and maintains this iconic building and its contents. They exist on ticket and gift shop sales and donations. COVID has devastated their revenues, and they are losing tens of thousands of dollars each month. The funding from the TAT will help The Friends of Iolani Palace immensely in their efforts to preserve and protect the Palace and share its story with Hawaii and the world.

**SB-1023-SD-2**

Submitted on: 3/16/2021 5:31:44 PM

Testimony for CAI on 3/17/2021 10:00:00 AM

<b>Submitted By</b>	<b>Organization</b>	<b>Testifier Position</b>	<b>Present at Hearing</b>
Kelley Uyeoka	Individual	Support	No

Comments:

Aloha,

I support SB1023 SD1 for the Bishop Museum and Iolani Palace, which requires a fixed amount of the transient accommodations tax to be allocated to provide funding for the Bernice Pauahi Bishop Museum and Iolani Palace. This bill would ensure consistent funding of these important stewards of our State's heritage. The Bishop Museum houses and creates work of great cultural, scientific, and intrinsic value to the State of Hawai'i. The Bishop Museum stewards the world's largest Hawaiian and Oceanic collections that are critical to Native Hawaiian culture and knowledge. Its natural history collections provide information crucial to protecting native species and habitats. In addition, the Museum provides vital educational programs and resources for the development of Hawai'i's children. These activities are of tremendous importance to the State, and must be supported at a much higher level than they are today.

Mahalo,

Kelley L. Uyeoka

**SB-1023-SD-2**

Submitted on: 3/16/2021 7:18:02 PM

Testimony for CAI on 3/17/2021 10:00:00 AM

<b>Submitted By</b>	<b>Organization</b>	<b>Testifier Position</b>	<b>Present at Hearing</b>
Ashley Ono	Individual	Support	No

Comments:

Aloha, I am Ashley Ono. I fully support SB1023, SD2 that would allocate \$750,000 to Iolani Palace, from the TAT, or Transient Accommodations Tax. Iolani Palace is a National historic landmark. It was the home to Hawaii's last reigning alii, and later the offices for the Provisional, Republic, Territorial and State governments.

The Friends of Iolani Palace are a non-profit organization that manages and maintains this iconic building and its contents. They exist on ticket and gift shop sales and donations. COVID has devastated their revenues, and they are losing tens of thousands of dollars each month. The funding from the TAT will help The Friends of Iolani Palace immensely in their efforts to preserve and protect the Palace and share its story with Hawaii and the world.

Mahalo,

Ashley Ono