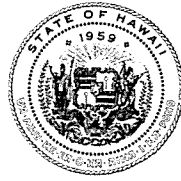


DAVID Y. IGE
GOVERNOR
STATE OF HAWAII

JOSH GREEN
LT. GOVERNOR
STATE OF HAWAII



WILLIAM J. AILA, JR.
CHAIRMAN
HAWAIIAN HOMES COMMISSION

TYLER I. GOMES
DEPUTY TO THE CHAIRMAN

**STATE OF HAWAII
DEPARTMENT OF HAWAIIAN HOME LANDS**

P. O. BOX 1879
HONOLULU, HAWAII 96805

Testimony of William J. Aila Jr., Chairman
Hawaiian Homes Commission

Before the Joint Senate Committee on Ways and Means
and Senate Committee on Hawaiian Affairs
on the
2021-23 Biennium Budget Request
of the Department of Hawaiian Home Lands

January 5, 2021

Chairs Dela Cruz and Shimabukuro and Members of the Senate Committee on Ways and Means and Senate Committee on Hawaiian Affairs:

Thank you for this opportunity to provide information on the Department of Hawaiian Home Lands (DHHL) Biennium Budget request for Fiscal Years 2022 and 2023 Operating and Capital Improvement Program Budgets.

Overview

The mission of the department is to manage the Hawaiian Home Lands Trust effectively and to develop and deliver land to native Hawaiians. We will partner with others toward developing self-sufficient and healthy communities. The trust, created by Congress through the Hawaiian Homes Commission Act of 1920, as amended (Act), set aside public lands to be used for the benefit of native Hawaiians (persons of at least 50% Hawaiian blood). Today, the department is responsible for the management of 203,500 acres of these trust lands, 9,959 homestead leases statewide, and 44,096 lease applications¹.

As required by the Admissions Act and as a compact with the United States, the State of Hawaii and the people of Hawaii adopted the Act as a provision of the State Constitution and agreed to faithfully carry out the spirit of the Act for the rehabilitation of the Hawaiian race. These trust responsibilities still remain.

¹ Lease and application count as of 11/30/2020.

Although DHHL’s mission “to develop and deliver land to native Hawaiians” is well-known, the lesser known charge “to manage the Hawaiian Home Lands trust effectively” is equally important. Increasingly, this responsibility is demanding a greater share of DHHL’s financial and staff resources to address.

In terms of land holdings, Table 1 identifies the land use designation utilized by DHHL. Of the total inventory, less than 5 percent are designated for residential use (including existing residential homesteads), while nearly two thirds of DHHL’s land inventory (63.3% percent or 128,721 acres) are lands designated as General Agriculture or Conservation/Special District². Most of these lands will remain in DHHL’s inventory over the next 20 years with DHHL facing land management issues for this acreage, similar to DLNR and other large private land owners (i.e. trespassing, dumping, fire prevention, etc.)

Table 1: DHHL Lands by Land Use Designation Statewide

	TOTAL	%	
Residential	9,508	4.67%	
Subsistence Ag	6,590	3.24%	
Supplemental Ag	10,199	5.01%	
Pastoral	43,739	21.51%	
Community Use	1,760	0.86%	
Commercial	1,144	0.56%	
Industrial	1,676	0.82%	
General Agriculture	65,218	32.07%	} 63.30%
Special District	33,673	16.56%	
Conservation	29,830	14.67%	
Acres:	203,337		128,721

Finding creative ways to manage this trust resource with beneficiary engagement and participation, while honoring DHHL’s fiduciary responsibilities to act prudently and not place the interests of one beneficiary group above another, is the challenge ahead.

The department administers two (2) programs, HHL 602, Planning and Development for Hawaiian Homesteads and HHL 625, Administration and Operating Support. The objectives of the programs are to develop and manage the designated Hawaiian home lands to create more

² The General Agriculture designation identifies lands that are unlikely to be developed within the next twenty years given its remote location or high costs needed to bring in infrastructure to prepare the lands for homesteading.

Senate Committee on Ways and Means and
Senate Committee on Hawaiian Affairs
January 5, 2021

homesteads for native Hawaiians (as defined by the Act) and generate revenues to address program needs.

Fiscal year 2020 continued a renewed commitment by the State to support the department's administrative and operating costs through a general fund appropriation of \$18.6 million. This amount, \$18.6 million, of general funds was reduced by restrictions in the amount of \$1.28 million, netting an available appropriation of \$17.35 million for the administration and operating costs for FY 2020.

General funding has allowed the department to allocate revenues it generated from its available lands to the development of new lots and other capital improvement projects on the home lands, a direct benefit to beneficiaries. Interest earnings from the department's general loan fund could also be reinvested into the loan fund, allowing for additional lending to beneficiaries.

These resources (revenues from available lands and interest earnings) were formerly used to pay for the department's administrative and operating expenses. Homesteading Program Like other state agencies, DHHL's operations were detrimentally impacted by the COVID-19 pandemic. As offices and businesses began to reopen, DHHL revised its lot offering procedures to take into account the required protocols needed to keep beneficiaries and staff safe. Beginning in the October 2020, DHHL began lot orientation meetings and lot offering events utilizing computer technology, social distancing and other public safety protocols.

In calendar year 2021, DHHL anticipates offering approximately 185 lots in the following locations:

- Kapolei, Oahu (Kauluokahai – East Kapolei ph IIB): 37 lots with turn-key developer built homes
- Ka`u, Hawaii (Discovery Harbor): 38 vacant residential lots
- Statewide Pre-owned lots (both residential and agricultural): 50 lots on Hawaii, Molokai, Maui and Oahu
- Kona, Hawaii (Laiopua): -- 60 units will be offered in the first phase of a single-family "rent with option to purchase" project. In 2021, the developer plans to submit a low income tax credit (LITC) application for additional phases. Total build out of this project in Laiopua Village 4 and Village 5 is projected to be 163 units.

In response to requests from our beneficiaries for more opportunities to build their own homes, DHHL expanded the number of vacant lot offerings it provides to both "undivided

interest” (UI) lessees³ and applicants on the waiting list so that families can build a home that meets their needs and budget. The department also continues to work with self-help providers on all islands including Habitat for Humanity.

In 2020, DHHL’s Subsistence Agriculture homesteading program reached a major milestone when it published its final Environmental Assessment (EA) with a Finding of No Significant Impact (FONSI) for the Honomu Subsistence Agriculture pilot project on Hawaii. These lots will consist of agriculture lots ranging in size from one to three acres. Subsistence Agriculture subdivisions in Honomu and Panaewa are currently in design and are planned for construction bids in 2021.

Over 2,000 plus residential, agricultural, and pastoral lots are currently in the pipeline to be developed over the next five years, assuming funding to design and construct these lots are made available.

Rental and Multi-Family

For many native Hawaiian families DHHL’s residential homesteading program is the only opportunity they have to be able to own a single-family home in Hawaii. While DHHL’s residential homesteading program is a critical part of addressing Hawaii’s affordable housing crisis, this housing product type may not address all of the housing needs experienced by the beneficiaries on our waiting list. Further, beneficiaries, legislators, congressional delegation members, and others have inquired as to DHHL’s plans to offer something other than single family housing.

In Sept. 2019, Gov Ige signed new Administrative Rules allowing for rentals on Hawaiian Home Lands. DHHL plans to pursue multi-family units including affordable rentals (possibly for kupuna) as an additional housing option for beneficiaries particularly in locations where multi-family density makes sense such as in urban Honolulu. These sites for future multi-family projects include:

³ “Undivided Interest” (UI) leases were awarded approximately 15 years ago for specific subdivisions that were planned for development. Upon completion of the subdivision, the UI lessee was eligible to select a lot and convert their UI lease to a standard homestead lease.

- 820 Isenberg Street (former “Bowl-a-Drome”) site – in September 2020, DHHL selected Stanford Carr Development and Hawaiian Dredging Construction to implement the redevelopment (270 units);
- Ulu Ke Kukui in Ma`ili (an existing multi-family structure on DHHL lands formerly managed by a Department of Human Services provider);
- East Kapolei (DHHL parcel near the rail station);
- Moiliili – acquisition of Kamehameha Schools real estate in FY 2020. Two apartments with 31 units.

In 2020, DHHL finalized negotiations with Ikaika Ohana to build the first 60 single family homes and manage a rent with option to purchase project in Laiopua, Kona. Funding approval from Low Income Housing Tax Credits and Rental Housing Revolving Fund was secured through finance programs administered by Hawaii Housing Finance Development Corporation (HHFDC).

Note that while rental units provide our beneficiary families with needed affordable housing it will not take an individual off of DHHL’s waiting lists. The waiting lists maintained by DHHL are individuals awaiting an award of land and issuance of a lease to that land and not a rental housing unit.

Impact of Current Economic and Fiscal Conditions and Other Challenges

There are several challenges DHHL faces with respect to meeting the mission of homesteading. These include, but are not limited to, the following:

- (1) DHHL can only develop where it has lands. Most of DHHL’s lands are located on the neighbor islands in rural or more remote locations. The greatest demand (longest waiting list) is for residential property on Oahu (9,9,935⁴). Yet, DHHL has the least amount of land holdings on Oahu (3.3% of total lands).
- (2) Reliable funding. The cost for infrastructure (roads, water, sewer, drainage, electrical, etc.) to prepare DHHL lands for homesteading is high. The development process is also long requiring environmental compliance, planning, design, and construction phases. To keep a steady production of lots requires a reliable stream of funding to keep lots in every phase of development. This reliable funding also gives families waiting for an award of a lot (both applicant families on the waiting list or UI lessees) some certainty to plan and prepare financially to take a lot.

⁴ As of November 30, 2020

- (3) Competing needs. In addition to developing new homesteads, DHHL also has other critical, albeit lesser known responsibilities. Like a county, DHHL maintains and repairs existing infrastructure (e.g. clearing of flood channels and drainage, fire protection of non-homestead areas, roads and facilities maintenance, sewer emergencies and repairs, etc.) In certain counties, the county has either not accepted portions of newer infrastructure, or has stopped performing needed repair. One examples is sewer systems. Act 227, SLH 2014, clarified and confirmed that operating and maintenance of sewer systems is a county function. However, DHHL continues to maintain the sewer systems on Hawaiian home lands in the interim until Act 227 can be fully implemented in subdivisions completed after the mid-1990's.

In addition to County-like responsibilities, DHHL also performs water utility functions. DHHL owns and operates three regulated public water systems: Hoolehua, Molokai; Anahola, Kauai; and Kawaihae, Hawaii⁵. Together, the systems have a total of 826 meters serving approximately 2,500 individuals (not including the schools and airport that are supported by the Hoolehua system.) DHHL also owns and operates non-potable water system for stock purposes in Puukapu and soon to be constructed non-potable water system in Honokaia, both on Hawaii Island. These non-potable water systems service over 200 connections.

If DHHL trust resources are spent to address these critical functions for existing homesteads and lessees, it will not have the resources needed to maintain its homestead production goals and meet the needs of beneficiaries on the waiting list.

Capital for Mortgage Financing

DHHL continues to address the challenging issue of providing capital for mortgages to families that reside on trust lands and providing support to families facing mortgage loan delinquencies. In fiscal year 2020, DHHL managed a total of 4,516 outstanding loans, processed 295 Federal Housing Administration insured loans and 61 Section 184A Native Hawaiian Housing Loan Guarantees (loans guaranteed by the U. S. Department of Housing and Urban Development's (HUD) Office of Native Hawaiian Programs), 18 Veteran Affairs and 12 U.S. Department of Agriculture Rural Development loans and addressed in excess of 954 delinquent mortgage loans. Each of these loans represents an opportunity for a native Hawaiian to return to trust lands or to remain on these lands.

⁵ DHHL also owns and operates a fourth non-potable system that feeds its pastoral homestead lots in Puukapu, Hawaii.

In December 2020, the Hawaiian Homes Commission approved a pilot loan program and related trust fund budget for an initiative that will provide applicants on the DHHL wait list with down payment assistance for a fee-simple residential purchase off Hawaiian home lands on Oahu.

As DHHL expands the number of vacant lots it awards, the need for financing options for non-traditional housing product increases.

Efforts to Support Progress

(1) Focus on subsistence agricultural lots. For Maui, Hawaii, Kauai, and Molokai, the waiting lists for an agricultural lot is longer than a residential lot. Given this strong apparent demand for agricultural lots and DHHL's extensive agricultural land inventory on the neighbor island, DHHL has gone through consultation with our beneficiaries and conducted public hearing with the community to amend our rules to include a new type of award of leasehold. The Subsistence Ag award will allow the department to award a lease up to three acres in size to address those on the Agricultural Waiting List.

These leases will not be required to have as extensive infrastructure improvements that would be expected with a residential lease award. With lower infrastructure requirements, the department will be able to award more lots with less cost.

Projects have commenced on Hawaii Island, Kauai, Molokai and Oahu to provided Subsistence Ag lots.

- In Honomu, on Hawaii Island the master planning has commenced and engineering for the initial phase of lots is under design. In Panaewa, the department is subdividing a ten (10) acre ag lot into smaller subsistence ag lots.
- On Kauai, lands in Hanapepe will utilize CIP funding to master plan lots, including Subsistence Ag lots, and seek to engineer necessary infrastructure including water, drainage and roads.
- On Molokai the CIP funding will allow subdivision of larger Ag lots into smaller Subsistence Ag lots. The funding will also allow for extending much needed infrastructure to more lots.
- On Oahu, again CIP funding has allowed for the design of Subsistence Ag lots in Waimanalo. The engineering for the water, electrical, drainage and roadways has commenced.

- (2) HALE program. In Sept 2020, DHHL revamped its HALE program with expanded financial support services. Initially established by the Department in 2012, the HALE program aids lessees and applicants with financial literacy education and support services. DHHL has expanded on HALE's foundational concepts to new services that include Financial Planning 101, Post-Home Maintenance, Medicare/Medicaid, the Affordable Care Act, Vacant Lot Construction, and Owner Builder Process. Previous services like Lease Cancellation Prevention and Homebuyer Education will continue. Classes conducted online and onsite classes will be considered upon the expiration of social distancing restrictions.
- (3) Legislative support for repair and maintenance. The funding for the Papakolea Slope Stabilization and Sewer work is being deployed. The slope stabilization has been completed and the sewer lines at the top of the slope will soon be replaced. Sewer lines are being replaced and rehabilitated along several other streets and sewer easements in Papakolea. The design of the next phases has commenced.
- (4) Sewer Assessment. The legislature passed Act 227, SLH 2014 to allow the turning over of sewer infrastructure that is in DHHL subdivisions to the county after the systems are brought up to the approve standards. Sewer spills continue occur and plague the homesteaders.

The department continues to work with the City and County of Honolulu to have systems that have met that standard to be turned over to the county for maintenance. Some the CIP funding has been used to have engineers inspect the existing systems, locate sections that need replacement, repair or cleaning and determine what needs to be done to have the systems inspected and turned over to the county. In September 2020, DHHL has conveyed the sewer lines in Kaupuni Village, Oahu to the City and County of Honolulu in the first of what will be several line transfers stemming from the implementation of Act 227, SLH 2014. We request continued funding to allow the design and construction of the needed improvements.

- (5) Drainage Improvements. The storms in April 2018 caused flooding and damage to our drainage channels and homesteads. The department worked with FEMA to address clean-up and pinpoint improvements that would prevent or reduce future flooding. Some the CIP funding has been utilized to address the construction to needed repairs and improvements (such as the construction remediation of the first phase of the Anahola, Kauai Reservoirs in July 2020 and the construction commencement of the Nanakuli Flood Control Improvements in July 2020).

- (6) Successful partnerships. Hawaii Community College has agreed to continue the successful partnership with the department by agreeing to a multi-year agreement to build one home a year in Keaukaha. This year the 51st home was constructed by the students and awarded to a beneficiary family. In addition, several of the homestead associations including Kapolei Community Development Corporation, Waiohuli Hawaiian Homestead Association, Laiopua 2020, Kailapa Hawaiian Homestead Association, Waimea Hawaiian Homestead Association, Nanakuli Hawaiian Homestead Association and others saw milestones accomplished with their community based initiatives located on Hawaiian home lands, in some cases funded with Grant-in-Aid or other CIP resources secured from the Legislature.

Other Notable Achievements (Water)

Beyond homestead development, calendar Year 2020 saw other notable achievements at DHHL particularly in the area of water. After the approval of the State Water Projects Plan Update (focused on DHHL's comprehensive future needs) by the Board of Land and Natural Resources – a 4-5 year collaborative project with Commission on Water Resource Management (CWRM) DHHL secured approved water reservations for DHHL's foreseeable groundwater needs statewide from the Council on Water Resource Management (CWRM). These reservations are significant for future development on Hawaiian home lands because they clearly articulate to current and potential future users of water what amounts must be set aside and protected now for DHHL's future use.

DHHL water system infrastructure will be undergoing major repairs.

In November 2020, DHHL held a groundbreaking to mark the beginning of a \$37 million capital improvement project to upgrade the 80 year old Ho'olehua Water System on the island of Molokai. The project is funded in part by a \$19 million allocation from the United States Department of Agriculture.

In December 2020, DHHL broke ground on its next phase of the Anahola Farm Lots Water Project (Phase 2) on the island of Kauai. DHHL's \$12.9 million project is funded in part by the United States Department of Agriculture and will upgrade the Anahola Water System by replacing old infrastructure and ensuring that operation follow Safe Drinking Water Act standards.

In addition to these reservations, DHHL collaborated with the University of Hawaii Law School to host and sponsor a series of statewide workshops for beneficiaries to understand water issues associated with DHHL and to provide for more informed advocacy. These workshops were well received by those who attended. The success of these workshops has resulted in discussions for further collaborative projects with UH in the future.

Senate Committee on Ways and Means and
Senate Committee on Hawaiian Affairs
January 5, 2021

While there are tremendous challenges in front of us, the department is positioned to play an integral part in our State's economy through its CIP projects, particularly as private projects near completion and the construction industry starts to cool down. We look forward to coordinating our efforts with the Legislature.

Federal Funds

DHHL is the sole recipient of Native Hawaiian Housing Block Grant (NHHBG) funds, CFDA 14.873, as authorized by Title VIII of the Native American Housing Assistance and Self Determination Act (NAHASDA). These funds support eligible affordable housing activities for beneficiaries at or below the 80% area median income. For the fiscal year ending June 2019 and June 2020, DHHL received \$2 million each year of federal funding. For the current fiscal year, the amount DHHL anticipates receiving \$2 million. However, because HUD is one of the federal departments impacted by the federal shutdown, the final amounts that DHHL will receive is still undetermined.

Upon a recent site visit by a D.C. based HUD official, HUD expressed satisfaction with DHHL's progress in spending down its accumulated balance and encouraged DHHL to request additional funds beyond the \$2 million.

In DHHL's FB 2021-2023 Federal Fund request, it is requested that a revolving loan fund be authorized in the amount of \$7 million to allow the financing of direct loans from its Federal Fund HUD grant.

Current Operations and Impact

The DHHL Oahu and Neighbor island offices reopened to the public starting in the middle of June 2020. Beneficiaries seeking services were on an appointment-only basis and are asked to call their respective offices ahead of time for an appointment.

Walk-in payments and deliveries were accepted started in the middle of June 2020, except at the Kauai District Office where an appointment will be needed. Office hours are from 7:45 a.m. to 4:30 p.m., Monday to Friday. Mail in payments are accepted.

DHHL COVID-19 Emergency Rental Assistance Program: DHHL provided rental relief for DHHL Applicant Waiting List beneficiaries and was launched on May 11, 2020, in partnership with the Aloha United Way. Eligible native Hawaiians on DHHL's Applicant Waiting List who experienced loss of income or job as a result of COVID-19 may receive assistance for the payment of their security deposit and/or rent up to 12 months. The program is administered by AUW.

Senate Committee on Ways and Means and
Senate Committee on Hawaiian Affairs
January 5, 2021

DHHL Direct Loan Deferral: The Hawaiian Homes Commission approved an emergency postponement of mortgage payments for DHHL direct loans and loans assigned to DHHL effective with the April 2020 payment. This deferral was extended to March 31, 2021.

Under the circumstances, DHHL has been able to address the homestead program needs and its capital project schedules in a timely manner.

Sufficient Sums Biennium Budget Request

Background: DHHL “Sufficient Sums” Biennium Budget Request

Article XII, Section 1 of the State Constitution requires that the Legislature make sufficient sums available for development of (1) homestead lots, (2) homestead loans, (3) rehabilitation projects and for (4) DHHL administrative and operating expenses. Although what is “sufficient” for DHHL’s administrative and operating expenses is still under dispute as part of the Nelson case, what is clear is DHHL’s obligation to request from the Governor and the Legislature the amounts it deems sufficient to meet the four purposes of the Hawaiian Homes Commission Act as outlined in the Hawaii State Constitution. Therefore, on October 20, 2020, the Hawaiian Homes Commission (HHC) approved the following “Sufficient Sums” biennium budget request at its regular meeting.

General Funds/General Obligation Bonds

Operating Budget – DHHL Administrative and Operating Expenses (Purpose 4):

The proposed biennium budget request for administrative and operating costs total \$212,199,012 and \$86,764,012 for fiscal years 2022 and 2023, respectively (Attachment A).

In light of the COVID 19 pandemic, the “sufficient sums” request for fiscal biennium 2021-2023 were adjusted.

“Personal Services” category costs were based on 206 (FTE) positions as authorized for Fiscal Year 2021, pursuant to Act 9, SLH 2020. 60 positions were reduced from the 266 positions as previously requested in the FB 2019 – 2021 sufficient sums request to the Legislature. The reduction of the 60 positions does not preclude the department from requesting the 266 positions when the economy recovers. Fringe benefit costs are absorbed by a separate Department of Budget and Finance general fund appropriation. The annual personnel costs request represents an aggregate of the annual base salaries.

Senate Committee on Ways and Means and
 Senate Committee on Hawaiian Affairs
 January 5, 2021

In the proposed FB 2021-2023 request, the DHHL’s fiscal year 2021 budget for the “Other Current Expenses” category was used as a base line and adjusted to exclude costs related to development of homestead lots, loans, and rehabilitation projects. Consequently, the base budget was adjusted for debt service costs, loans, grants in aid and grants. The annual “Other Current Expenses” category totaled \$17,780,378. Attachment A-1 provides the “Other Current Expenses” category approved by the Commission relating to the Administrative and Operating Costs, with adjustments, to determine the “sufficient sums” amount.

Ongoing repairs and maintenance for infrastructure on Hawaiian home lands totaled \$5,823,000 and \$4,323,000 for fiscal years 2022 and 2023 respectively and is requested as a separate general fund “Repair and Maintenance” request in the “Other Current Expenses” category (See Attachment B-2).

DHHL’s initial CIP general obligation bond request relating to repair and maintenance of infrastructure on Hawaiian home lands is made as a lump sum request under the title of “Hawaiian Home Lands Development, Statewide” totaling \$175,935,000 and \$52,000,000 for fiscal years 2022 and 2023, respectively (See Attachment B-1). The infrastructure projects have a long-standing history of operational, maintenance and repair issues that have become capital improvement issues.

Attachments “A” provides a summary recap of the discussion.

Hawaiian Homes Commission Budget Request: Purpose no. 4 - State Constitution, Article XII, Section 1			
	FY 2022	FY 2023	
	(206.00)	(206.00)	
Administrative and Operating Budget Request	\$30,441,012	\$30,441,012	(A)
Operating Budget: Repairs and Maintenance of Infrastructure	\$5,823,000	\$4,323,000	(A)
CIP Budget: Repairs and Maintenance of Infrastructure	\$175,935,000	\$52,000,000	(C)
Total HHC Administrative and Operating Budget Request	\$212,199,012	\$86,764,012	
Means of Financing: (A)= General Fund; (C) = General Obligation Bond			

Hawaii State Constitution: Purposes 1, 2, 3 of Article XII, Section I; Lot Development, Loans and Rehabilitation Projects

The proposed biennium budget request for Purposes 1, 2, 3 of Article XII, Section I (Lot Development, Loans and Rehabilitation Projects) total \$254,868,100 and \$175,469,100 for FY

Senate Committee on Ways and Means and
 Senate Committee on Hawaiian Affairs
 January 5, 2021

2022 and 2023, respectively. Details of the request are shown in Attachments “B-1” (Lot Development), “D” (Loans), and “C” (Rehabilitation Projects).

Hawaiian Homes Commission Budget Request: Purposes no. 1, 2, 3, State Constitution, Article XII, Section 1			
	FY 2022	FY 2023	
Purpose 1: Lot Development	\$114,725,000	\$31,225,000	(C)
Purpose 2: Loans	\$73,100,000	\$73,100,000	(C)
Purpose 3: Rehabilitation Projects	\$52,524,000	\$56,440,000	(C)
Rehabilitation Projects	\$14,519,100	\$14,704,100	(A)
Total	\$254,868,100	\$175,469,100	

Means of Financing: (A) = General Fund; (C)=General Obligation Bond

In August 2018, DHHL participated in a Puwalu discussion in Maui that brought native Hawaiian beneficiary leaders state-wide together regarding priorities in their communities and programmatic needs. These needs provided by the beneficiaries were identified and sorted according to the purposes provided by Article XII, Section 1 of the State Constitution and included in the FB 2022-2023 request. These projects are identified in Attachment “C”.

Separate from the “sufficient sums” request, that is also included in Attachment “C”, are grants-in-aid (GIA) projects that were brought up in the Puwalu discussion. DHHL will provide information to the Administration and the Legislature on GIA projects that may be coming forward. The GIA requesters will still need to go through the normal GIA process to secure funding.

While a Puwalu discussion was not held in 2020 because of COVID-19, the projects identified as part of the prior Puwalu in 2018 continue to be a priority in communities statewide. In addition, DHHL updates regional plans documenting current conditions and trends as well as analyzing state and county plans to identify a prioritized list of projects important to the community. Since the Puwalu in August 2018, the following regional plans have been updated or are in process: Waianae & Lualualei Regional Plan (December 2018), Molokai Regional Plan (2019), Kealahou – Lanipuna Regional Plan (May 2020), and Papakolea Regional Plan Update (2020).

Senate Committee on Ways and Means and
 Senate Committee on Hawaiian Affairs
 January 5, 2021

	FY 2022	FY 2023
Purpose 1: Lot Development	\$114,725,000	\$31,225,000
Purpose 2: Loans	\$73,100,000	\$73,100,000
Purpose 3: Rehabilitation Projects	\$67,043,100	\$71,144,100
Purpose 4: Administrative and Operating Costs	\$212,199,012	\$86,764,012
	<u>\$467,067,112</u>	<u>\$262,233,112</u>
Means of Financing:		
General Fund	\$50,783,112	\$49,468,112
General Obligation Bond	\$416,284,000	\$212,765,000
	<u>\$467,067,112</u>	<u>\$262,233,112</u>

Governor's Executive Budget Request:		
General Fund	\$15,928,344	\$15,928,344
General Obligation Bond	\$25,000,000	\$25,000,000
	<u>\$40,928,344</u>	<u>\$40,928,344</u>

Executive Biennium Budget Requests – FB 2021-2023

The attached tables reflect the Governor's budget request on behalf of DHHL. DHHL's Non-General Fund Report is posted to the following link: <https://dhhl.hawaii.gov/dhhl/reports/>

Summary

We are most appreciative of the support given by the Legislature to the Hawaiian homes program throughout the years. We again thank the Committees for the opportunity to brief you on our biennium budget request. We have prepared and submitted our tables in accordance with the format and briefing instructions provided by the Senate Ways and Means Committee. We would be pleased to respond to any questions the Committees may have.

Department of Hawaiian Home Lands
 Purpose 4: Administrative and Operating Costs
 FY 2022 and FY 2023
 Budget Request Summary

	FY 2022 Budget Request to HHC	MOF	FY 2023 Budget Request to HHC	MOF
State Constitution, Article XII, Section 1, Purpose 4: Administrative and Operating Costs				
Personnel Costs	\$12,660,634	A	\$12,660,634	A
Other Current Expenditures	\$17,780,378	A	\$17,780,378	A
Subtotal Administrative and Operating Costs	\$30,441,012		\$30,441,012	
Repair and Maintenance of Infrastructure	\$5,823,000	A	\$4,323,000	A
Repair and Maintenance of Infrastructure	\$175,935,000	C	\$52,000,000	C
Subtotal R&M of Infrastructure	\$181,758,000		\$56,323,000	
Total Administrative and Operating Costs	\$212,199,012		\$86,764,012	

<u>Means of Financing:</u>				
A = General Fund	\$36,264,012	A	\$34,764,012	A
C = General Obligation Bonds	\$175,935,000	C	\$52,000,000	C
Total	<u>\$212,199,012</u>		<u>\$86,764,012</u>	

Purpose 4: "Other Current Expenses" Category
Executive Budget for FY 2021 as Approved by the HHC on June 16, 2020

		Administration and Operating Costs						TOTAL
Object		General	Administration	Operating Fund		Operating Fund (Non App)		Other Current
Code		Fund	Account	Operating Portion	Development Portion	Operating Portion	Development Portion	Expenditures
2900	Other Personal Services	704,000	225,000	0	0	0	0	929,000
3010	Operating Supplies - Gas & Oil Supplies	68,800	10,000	18,000	0	0	0	96,800
3020	Operating Supplies - Fuel & Oil Other	2,950	3,000	26,500	0	0	0	32,450
3030	Operating Supplies - Janitorial	24,380	0	6,548	0	0	0	30,928
3090	Operating Supplies - Others	24,500	2,350	17,284	0	0	0	44,134
3100	Maintenance Materials Supplies & Parts	11,800	0	100,000	0	0	0	111,800
3200	Office Supplies	127,150	0	800	0	0	0	127,950
3400	Other Supplies	21,866	0	1,500	0	0	0	23,366
3500	Dues and Subscriptions	15,762	2,000	300	0	0	0	18,062
3600	Freight and Delivery Charges	3,770	600	4,000	0	0	0	8,370
3700	Postage	181,990	0	4,550	0	0	0	186,540
3800	Telephone	130,210	0	600	0	0	0	130,810
3900	Printing and Binding	72,950	0	0	0	0	0	72,950
4000	Advertising	78,700	0	500	0	0	0	79,200
4100	Car Mileage	22,750	0	0	0	0	0	22,750
4200	Transportation, Intrastate	337,900	0	7,000	0	0	0	344,900
4300	Subsistence Allowance, Intra-State	187,970	0	4,000	0	0	0	191,970
4400	Transportation, Out of State	24,250	0	0	0	0	0	24,250
4500	Subsistence Allowance, Out of State	25,000	1,000	0	0	0	0	26,000
4600	Hire of Passenger Cars	59,075	0	3,000	0	0	0	62,075
5000	Electricity	402,000	665,000	510,200	0	0	0	1,577,200
5200	Water	113,700	267,000	229,800	0	0	0	610,500
5500	Rental of Land and Bldg.	12,800	0	0	0	0	0	12,800
5810	Repairs- Data Processing	14,000	0	0	0	0	0	14,000
5815	Maintenance - Data Processing	130,000	0	0	0	0	0	130,000
5820	Repairs- Equipment, Building, etc.	57,410	2,000	25,500	0	0	0	84,910
5825	Maintenance- Equipment, Building, etc.	389,100	45,550	73,972	0	0	0	508,622
5830	Repairs- Motor Vehicles	41,000	3,000	10,000	0	0	0	54,000
5835	Maintenance- Motor Vehicles	30,250	5,000	5,000	0	0	0	40,250
5840	Maintenance-Unencumbered Lands & Oth	609,625	200,000	0	0	0	0	809,625
5895	Maintenance-Other Miscellaneous	79,934	600,000	5,000	0	0	0	684,934
5900	Insurance	75,000	0	0	0	0	0	75,000
7110	Services Fee Basis	782,400	2,345,900	2,412,600	125,000	2,403,437	0	8,069,337
7230	Training Costs	115,500	32,000	7,000	0	0	0	154,500
7290	Other Current Expenditures	13,056	20,809	15,880	0	0	0	49,745
Total - Current Expenditure & Equipment		6,811,698	4,824,709	3,515,534	225,000	2,403,437	0	17,780,378
Means of Financing: General Fund								

Department of Hawaiian Home Lands
 Purpose 1: Lot Development
 Purpose 4: Administrative and Operating Costs
 FB 2021 - 2023 Budget Request

	AREA or SUBDIVISION	PROJECT COMPONENTS	Lots	PHASE (PLANNING, DESIGN, CONSTRUCTION, HOUSING)	FY 2022	FY 2023
PURPOSE 1: Lot Development						
	HAWAII					
1	Laiopua	Laiopua Utility and Infrastructure Changes		Design & Construction	500,000	-
2	Ka'u	Agricultural Lots (Pu'ueo)		Design & Construction	-	1,000,000
3	Honomu	Honomu Subsistence Ag Lot, Phase 2	40	Planning & Design	1,000,000	-
4	Keaukaha	Scattered Lots			5,000,000	-
5	Lalamilo	Lalamilo Phase 2A, Increment 2	80	Construction	1,500,000	-
6	Island-wide	UXO Mitigation and Construction Support			1,000,000	-
7	Hilo	Panaewa Lot 184	6	Design & Construction	1,000,000	-
8	Laiopua	Laiopua Village 1	260	Design	3,500,000	-
9	Hilo	Hilo Community College Model Home			225,000	225,000
	KAUAI					
10	Anahola	Anahola Residence Lots, Units G & G-1	30	Re-design	750,000	
11	Anahola	Piilani Mai Ke Kai Phase 3	40	Design	500,000	
12	Moloaa	Moloaa Farm Lots	47	Planning & Design		1,000,000
13	Hanapepe	Hanapepe Residential Subdivision Phase 2	75	Construction		7,500,000
14	Wailua	Wastewater Treatment Facility		Planning and Design		3,000,000
15	Wailua	Wailua Residential Lots Masterplan			1,000,000	
16	Wailua	Wailua Second Well exploration			1,000,000	
	LANAI					
17	Lanai	Phase 2 Off-site Development (40 Lots)		Planning and Design	3,000,000	
18	Lanai Residence Lots	Phase 2 On-site Development (40 Lots)	40	Design		2,000,000
	MAUI					
19	Honokowai	Water System Improvements, offsite storage		Construction	-	4,000,000
20	Pulehunui	Pulehunui Regional Infrastructure Masterplan		Acquisition and Design	3,000,000	-
21	Villages of Leialii Ph1B	Residential Subdivision Increment 1	75	Construction	8,000,000	-
22	Waikapu	Pu'unani Homestead	161	Design and Construction	6,000,000	-
23	Keokea-Waiohuli	Phase 3 Site Improvements	75	Design	1,500,000	-
24	Honokowai	Honokowai Residential and Subsistence Agr	80	Design	3,000,000	-
25	Pulehunui	Subsistence Ag Homesteads and Commercial/Industrial Development	80	Source Development/ Exploratory Well	5,000,000	-
26	Keokea-Waiohuli	Keokea-Waiohuli, Phase 2B Site Improvements	75		-	12,500,000
27	Keokea	Keokea Farm Lots Drainage System Improvements		Design/Construction	2,000,000	
28	Kahikinui	Kahikinui Roadways		Design/Construction	1,000,000	

Department of Hawaiian Home Lands
 Purpose 1: Lot Development
 Purpose 4: Administrative and Operating Costs
 FB 2021 - 2023 Budget Request

	AREA or SUBDIVISION	PROJECT COMPONENTS	Lots	PHASE (PLANNING, DESIGN, CONSTRUCTION, HOUSING)	FY 2022	FY 2023
	MOLOKAI					
29	Hoolehua	Naiwa Agriculture Lots Site Improvements	58	Design/ Construction/ CM	9,500,000	
30	Hoolehua	Pasture Lot Development	30	Design & Construction	1,000,000	
31	Hoolehua	Scattered Agriculture Lots Site Improvements	8	Design/ Construction/ CM	3,500,000	
32	Kalamaula	Farm Lots Site Improvements	40	Design & Construction	1,000,000	
	OAHU					
33	East Kapolei	East Kapolei Transit Oriented Development (Incr			2,000,000	-
34	Nanakuli	Voice of America, Ph I Infrastructure	253	Design & Construction	10,000,000	-
35	Waimanalo	Agricultural Lots	30	Design	750,000	-
36	East Kapolei	Residential Subdivision Incr II-E	158	Plan, Design	1,500,000	-
	STATEWIDE					
37	Statewide	Statewide Lot Development			26,000,000	
38	Statewide	Land and/or Building Purchase		Acquisition	10,000,000	
		Total	1741		114,725,000	31,225,000

PURPOSE 4: Administrative and Operating Costs - Repair and Maintenance of Infrastructure

	HAWAII					
39	Lalamilo	Lalamilo Septic System Improvements		Design & Construction	1,000,000	
40	Kau	Kau Water System		Design & Construction	5,000,000	
41	Lalamilo	Lalamilo Phase 1 Kawaihae Road Improvements		Design & Construction	100,000	
42	Kawaihae	Water: Production, Storage & Transmission		Planning & Design	750,000	
43	Kaumana	Kaumana Subdivision Lot Rehabilitation			500,000	
44	Puukapu	Puukapu Roadway Improvements			2,000,000	
45	Puukapu	Puukapu Non-Potable Water System		Design & Construction	1,000,000	
46	Kawaihae	Existing Potable Water System		Design & Construction	500,000	
	KAUAI					
47	Anahola	Water tank, site improvements		Design & Construction	2,000,000	
48	Anahola	Anahola Dam & Reservoir Improvements		Construction	3,000,000	
	MAUI					
49	Keokea-	Archaeological Preservation		Construction	1,000,000	

Department of Hawaiian Home Lands
Purpose 1: Lot Development
Purpose 4: Administrative and Operating Costs
FB 2021 - 2023 Budget Request

	AREA or SUBDIVISION	PROJECT COMPONENTS	Lots	PHASE (PLANNING, DESIGN, CONSTRUCTION, HOUSING)	FY 2022	FY 2023
	MOLOKAI					
50	Molokai	Hoolehua Water System Improvements		Design & Construction	8,000,000	
51	Hoolehua	Kanakaloloa Cemetery Improvements		Construction	1,500,000	
52	Kalamaula	Water & Drainage System Improvements		Design	1,000,000	
53	Kalamaula &	Sea Level Rise Planning		Planning & Environmental	250,000	
	OAHU					
54	Islandwide	Oahu Sewer Improvements		Construction Management	600,000	
55	Nanakuli	Princess Kahanu Estates Sewer Improvements		Construction	13,200,000	
56	Nanakuli	Princess Kahanu Estates Concrete Drainage Channel Improvements			600,000	
57	Waianae	Waianae Sewer Improvements		Construction	3,300,000	
58	Nanakuli	Nanakuli Sewer Improvements		Construction	45,000,000	
59	Islandwide	Cesspool Assessments (Waianae, Nanakuli & Waimanalo)		Design	1,000,000	
60	Waimanalo	Waimanalo Sewer Improvements		Construction	30,000,000	
61	Waimanalo	Waimanalo Bell Street Drainage Improvements		Design & Construction	1,000,000	7,000,000
62	Waimanalo	Waimanalo Dirt Drainage Channel		Design & Construction	3,000,000	
63	Nanakuli	Nanakuli Concrete Spall and Fencing, Phase 2		Design & Construction	2,000,000	
64	Nanakuli	Princess Kahanu Estates Concrete Spall and Fencing		Design & Construction	1,500,000	
65	Islandwide	Sewerline remediation: Waianae, Nanakuli, Waimanalo, Kapolei, etc.		Design and Construction	4,000,000	4,000,000
66	Papakolea	Sewer Improvements- CM Services		Construction Management	1,000,000	
67	Papakolea	Papakolea Sewer Improvements Phase 2		Construction	10,000,000	
68	Papakolea	Papakolea Slope Stabilization-Kapahu Street		Construction		10,000,000
69	Papakolea	Papakolea Retaining Wall Stabilization		Construction		10,000,000
70	Papakolea	2136 Kapahu Street Rockfall Evaluation Study and Mitigation Design		Planning/Design	3,500,000	
71	Papakolea	Hillside Maintenance			250,000	
72	Papakolea	Detention Basin Restoration / Repair			780,000	
73	Waimanalo	Kumuhau Detention Basin Restoration / Repair			235,000	
74	Islandwide	Oahu: Operation, Maintenance, Repair		Design & Construction	3,000,000	
75	Nanakuli	Nanakuli Cemetery Restoration / Repairs			370,000	
	STATEWIDE					
76	Statewide	Statewide Lot Rehabilitation		Design & Construction	2,000,000	2,000,000
77	Statewide	Environmental Mitigation and Remediation on		Plan, Design Construct	2,000,000	2,000,000
78	Statewide	R & Maintenance of Utilities in Existing		Plan, Design Construct	2,000,000	2,000,000

Department of Hawaiian Home Lands
 Purpose 1: Lot Development
 Purpose 4: Administrative and Operating Costs
 FB 2021 - 2023 Budget Request

	AREA or SUBDIVISION	PROJECT COMPONENTS	Lots	PHASE (PLANNING, DESIGN, CONSTRUCTION, HOUSING)	FY 2022	FY 2023
79	Statewide	Statewide Vacant Lot Rehabilitation		Design & Construction	3,000,000	3,000,000
80	Statewide	Statewide Fence Improvements		Design & Construction	2,000,000	2,000,000
81	Statewide	R&M Sewer/ Wastewater Infrastructure			5,000,000	5,000,000
82	Statewide	R&M Existing Infrastructure			8,000,000	5,000,000
		Total			175,935,000	52,000,000

Means of Financing: General Obligation Bonds

Department of Hawaiian Home Lands
 Purpose 4: Administrative and Operating Costs
 Repair and Maintenance of Infrastructure on Hawaiian Home Lands
 FB 2021 - 2023 Budget Request

ISLAND	AREA or SUBDIVISION	MAINTENANCE COMPONENTS- PURPOSE	FY 2022	FY 2023
Hawaii	Kawaihae	Water System Operation and Maintenance	120,000	120,000
Hawaii	Laiopua Villages	Brush Clearing and Fire Breaks	50,000	50,000
Hawaii	Puukapu	Water System Operation and Maintenance	255,000	255,000
Kauai	Anahola	Water System Operation, Maint, Emerg Call	75,000	75,000
Kauai	Hanapepe	Fencing/Gate Install/ Repair	400,000	
Kauai	Piilani MKK and Anahola	Maintenance	75,000	75,000
Lanai	Lanai City	Maintenance	75,000	75,000
Maui	Kula	Maintenance	200,000	200,000
Maui	Leialii	Leialii Parkway Maintenance	85,000	85,000
Maui	Waiehu Kou	Detention Basins and Ditches	125,000	125,000
Maui	Waiehu Kou	Sewage Pump Station	80,000	80,000
Maui	Islandwide	Fencing/Gate Install/ Repair	1,000,000	
Lanai	Lanai	Ground Maintenance	100,000	
Oahu	East Kapolei II	Detention Basins (2)	30,000	30,000
Oahu	Kapolei	Maluohai, Kaupea, Kanehili Maintenance	75,000	75,000
Oahu	Nanakuli	Princess Kahanu Road Repairs	30,000	30,000
Oahu	Oahu	Sewage Spill Response and Repair	150,000	150,000
Oahu	Oahu	Street Light Replacement	375,000	375,000
Oahu	Oahu	Scattered Location Repair and Maintenance	1,200,000	1,200,000
State	Statewide	Tree Maintenance/Control	500,000	500,000
Oahu	Waimanalo	Drainage Channel and Tree Trimming	38,000	38,000
Oahu	Waimanalo	Detention Basin	30,000	30,000
State	Statewide	Ground Maintenance	500,000	500,000
State	Statewide	Sign Replacement	255,000	255,000
		Total	\$5,823,000	\$4,323,000

Means of Financing: General Fund

Department of Hawaiian Home Lands
Purpose 3: Rehabilitation Projects
FB 2021-2023 Sufficient Sums Budget Request

ISLAND	AREA	PROJECT COMPONENTS	PHASE	FY 2022			FY 2023		
				DHHL		GIA	DHHL		GIA
				OPERATING	CIP		OPERATING	CIP	
Hawaii	Kaumana	Community Center	Planning					100,000	
Hawaii	Piihonua	Community Pasture	Planning	25,000					
Hawaii	Panaewa	Kamoleao Infrastructure & Bldg	Construction			4,500,000			
Hawaii	Keaukaha Panaewa	Agricultural Education Center	Planning					425,000	
Hawaii	Makuu	Community Center	Construction			6,000,000			6,000,000
Hawaii	Keaukaha	Community Pavilion	Planning			1,500,000			
Hawaii	Kamaoa Puueo	Water Master Plan Implementation	Construction		5,000,000				
Hawaii	Kamaoa Puueo	Cultural & Natural Resource Land Mgmt Implementation			3,000,000				
Hawaii	Waiohinu	Agriculture Homestead Leases	Planning					100,000	
Hawaii	Kau	Discovery Harbor Res Lots, Scattered Lots (38)						500,000	
Hawaii	Waimea	WHHCC Ag Complex Infrastructure	Construction			1,000,000			
Hawaii	Waimea	WHHCC Cemetery	Design			200,000			
Hawaii	Waimea	Finalizing Access Road to Lalamilo Phase I			2,500,000				
Hawaii	Waimea	WHHC Operations				180,000			
Hawaii	Waimea	Research and develop criteria for unpermitted structures		75,000					
Hawaii	Kailapa	Community Resource Ctr/Emergency Shelter				1,000,000			
Hawaii	Kailapa	Emergency Access Road	Planning and EA		134,000				
Hawaii	Kailapa	Community Association Operations				50,000			
Hawaii	North Kona	Test Well for Gianulias site	Design and Construction		2,500,000				
Hawaii	North Kona	Well for Gianulias site	Design and Construction					13,000,000	
Hawaii	Laiopua	Laiopua 2020 Operation Funding				520,000			
Hawaii	Laiopua	Renewable energy project	Planning and EA					280,000	
Hawaii	Laiopua	Internal driveway to connect L2020 community parcel to Ane Keohokalole Hwy	Planning and Design					300,000	
Kauai	Puu Opae	Refurbish existing irrigation system				250,000			
Kauai	Puu Opae	Farm equipment for education program				200,000			
Kauai	Puu Opae	Training, processing, storing and repair facility							500,000
Kauai	Puu Opae	Road Improvements			200,000				
Kauai	Puu Opae	Temporary lodging							100,000
Kauai	Anahola	Irrigation System (\$1,000,000)	Planning & Design						
Kauai	Wailua	Access to surface/ground water			100,000			6,000,000	
Kauai	Kekaha	Ag with homestead		10,000					
Kauai	West Kauai	Multi-Purpose: Evacuation & Education Ctr			250,000				

Department of Hawaiian Home Lands
 Purpose 3: Rehabilitation Projects
 FB 2021-2023 Sufficient Sums Budget Request

ISLAND	AREA	PROJECT COMPONENTS	PHASE	FY 2022			FY 2023		
				DHHL		GIA	DHHL		GIA
				OPERATING	CIP		OPERATING	CIP	
		Study drug rehab facilities within the community						500,000	
Kauai		Educational programs				100,000			
Kauai		Bring assn's together to collaborate (\$100,000)*							
Kauai	Hanapepe	Ag land			250,000				
Lanai		Award remaining 16 residential homestead lots			100,000				
Lanai		Establish homestead community association		50,000					
Lanai		Interim Use of Undeveloped Land				50,000			
Lanai		Acquire additional lands for ag and pastoral homesteads					5,000,000		
Maui	All Homesteads	Community Beautification: clean-up debris and abandoned vehicles		200,000		200,000			
Maui	All Homesteads	Lot Development & Road Repair	Equipment		2,500,000	400,000			
Maui	All Homesteads	Maui Homeowner Financial Education		250,000		250,000			
Maui	Keokea	Farmers Marketplace & Community Center	Planning and EA		550,000		550,000	600,000	
Maui	Keokea	Water sourced infrastructure for potable and nonpotable water	Planning, EA & Construction		4,750,000		4,750,000		
Maui	Keokea-Waiohuli	Community Based Planning for Cultural Preserves	Survey, Research, Planning & Dev		150,000		500,000		
Maui	Keokea-Waiohuli	Safety Awareness Program		200,000		200,000			
Maui	Keokea-Waiohuli	Speed humps on Ahulua St.			100,000				
Maui	Waiohuli UI	Acquire Lands for Community Development			150,000		500,000		
Maui	Paukukalo	Armory Site Development	Planning, Design and EA		150,000		500,000		
Maui	Paukukalo	Pihana Heiau Restoration	Planning and EA				100,000		
Maui	Paukukalo	Park Beautification and Upgrades	Playground equipment, courts		500,000				
Maui	Waiehu Kou	Community Center & Bus Stop					500,000		
Maui	Waiehu Kou	Landscaping Maintenance Contract		150,000		150,000			
Maui	Waiehu Kou	Community Garden - Water Development			30,000		1,500,000		
Maui	Waiehu Kou	Drainage Basins - siltation clean up (\$3,500,000)							
Maui	Kahikinui	Community Center/Pavilion			1,000,000		1,000,000		
Maui	Kahikinui	Community Economic Center and Hale Pili	Planning & EA	250,000					
Maui	Kahikinui	Road Construction and Repair			5,000,000		5,000,000		
Maui	Kahikinui	Road Development and Repair	Equipment		400,000	100,000			

Department of Hawaiian Home Lands
 Purpose 3: Rehabilitation Projects
 FB 2021-2023 Sufficient Sums Budget Request

ISLAND	AREA	PROJECT COMPONENTS	PHASE	FY 2022			FY 2023		
				DHHL		GIA	DHHL		GIA
				OPERATING	CIP		OPERATING	CIP	
Maui	Kahikinui	Fog Catchment System: Phase 2		750,000					
Maui	Kahikinui	Water Storage (water tanks)		150,000					
Maui	Kahikinui	Community Pasture Paddocks/Fencing	Design & Construction	250,000		250,000			
Maui	Kahikinui	Stewardship Economy			250,000		500,000		
Maui	Kahikinui	Ungulate Removal and Reforestation		60,000		60,000			
Maui	Leialii	Neighborhood Park	Planning & Design		100,000		500,000		
Maui	Honokowai	Community Subsistence Ag Program Development	Education, Training, Ag program	50,000					
Maui	Honokowai	Ag Education and Training	Facility and Program Dev		50,000				
Maui	Honokowai	R-1 Water for Ag Irrigation	Research, Planning and Dev		1,500,000				
Maui	Pulehunui	Community-Based Economic Dev			15,000,000				
Molokai		Transition Cespools to Septic Systems			1,500,000				
Molokai	Malama Park	Land Use Designation & Master Plan			500,000				
Molokai	Kiowea Park	Complete Pavilion Project				750,000			
Molokai		Deer management plan	Planning		500,000				
Molokai		Cross fencing/deer fencing						200,000	
Molokai	Hoolehua	Playground and youth center					100,000		
Molokai		Tiny homes					80,000		
Molokai	Kalamaula Mauka	Passive Park	Planning				150,000		
Molokai	Kapaakea	Temporary residence shelter					125,000		
Molokai		Renovate Ahupuaa o Molokai Hale					250,000		
Molokai	Kapaakea	Remodel/renovate kupuna hsg in flood zone					300,000		
Molokai		Transitional home					80,000		
Oahu	Papakolea	Address Abandoned Homes		150,000		150,000			
Oahu	Papakolea	Kupuna Supportive Living Ctr Feasibility Study			250,000				
Oahu	Papakolea	Operate Kupuna Community Care Network				400,000		400,000	
Oahu	Papakolea	Puowaina EA			250,000				
Oahu	Papakolea	Basketball Complex Improvements				5,000,000			
Oahu	Papakolea	Education/Health Programs				850,000		850,000	
Oahu	Nanakuli	Ocean safety & Cultural education	Planning		250,000				
Oahu	Princess Kahanu	Traffic calming			60,000				

Department of Hawaiian Home Lands
 Purpose 3: Rehabilitation Projects
 FB 2021-2023 Sufficient Sums Budget Request

ISLAND	AREA	PROJECT COMPONENTS	PHASE	FY 2022			FY 2023		
				DHHL		GIA	DHHL		GIA
				OPERATING	CIP		OPERATING	CIP	
Oahu	Princess Kahanu	Community center expansion	Land acquisition						1,500,000
Oahu	Waianae Valley	Coumbarium with large area for cultural uses	Plng and Dsgn		300,000				
Oahu	Waianae Valley	Kaupuni Park Development							3,500,000
Oahu	Kapolei	Kapolei Heritage Center Phase II				2,500,000			
Oahu	Kanehili	Park Development			300,000				
Oahu	Kaupea	Perimeter wall at Kamaaha/Kapolei Pkwy (\$500,000)							
Oahu	Kapolei	Safety/Drug coalition with NSW		50,000					
Oahu	Kapolei	NSW equipment		5,000					
Oahu	Kapolei	Maintenance/Repair for dedication of roads (\$125,000)							
Oahu	Kapolei	Place of worship & place of rest/cemetery						250,000	
Oahu	Waimanalo	Emergency Evacuation and Street Extension			1,500,000			13,500,000	
Oahu	Waimanalo	Land Based Aquaculture Facilities	Planning				50,000		
Puwalu: Subtotal				\$1,775,000	\$52,524,000	\$24,900,000	\$1,960,000	\$56,440,000	\$14,150,000
Homeowner Affordability Initiative				5,000,000			5,000,000		
Lease Cancellation Prevention/Financial Literacy				5,000,000			5,000,000		
Native Hawaiian Development Program Plan				2,744,100			2,744,100		
Total				\$14,519,100	\$52,524,000	\$24,900,000	\$14,704,100	\$56,440,000	\$14,150,000
Means of Financing:				(A)	(C)		(A)	(C)	
(A) General Funds									
(C) General Obligation Bonds									
* Projects are funded in other budgets									

Department of Hawaiian Home Lands
 Purpose 2: Loans
 FB 2021- 2023 Budget Request

Purpose	FY 2022	FY 2023
Mortgage Capitalization for Gap Group and Low to Moderate Income Families	37,500,000	37,500,000
Interim Financing (for Turnkey)	32,400,000	32,400,000
Debt Service - Revenue Bonds	3,200,000	3,200,000
Total	\$73,100,000	\$73,100,000

Department of Hawaiian Home Lands
Functions

Table 1

Division	Description of Function	Activities	Prog ID(s)	Dept-Wide	Statutory Reference
				Priority	
LDD, HSD, LMD, OCH, FO, ASO, PO, ICRO	To develop and deliver land and housing to native Hawaiian beneficiaries of the Hawaiian Home Lands Trust	Award homestead (residential, agricultural and pastoral) leases to beneficiaries. Award general leases. Provide assistance to lessees so they may obtain maximum utilization of their awards in keeping with the purpose for which those lands were leased.	HHL 602 HHL 625	1	Article XII, Section 1 of the State Constitution, Hawaiian Affairs; Hawaiian Homes Commission Act of 1920, as amended
LDD, HSD, LMD, OCH, FO, ASO, PO, ICRO	Manage land dispositions, water systems, maintain land and environmental protection	Manage land dispositions, water systems, maintain land and environmental protection	HHL 602 HHL 625	1	Article XII, Section 1 of the State Constitution, Hawaiian Affairs; Hawaiian Homes Commission Act of 1920, as amended
LDD, HSD, LMD, OCH, FO, ASO, PO, ICRO	Provide direction and administrative support to staff that perform core duties	Human resources, accounting, planning and auditing activities	HHL 602 HHL 625	1	Article XII, Section 1 of the State Constitution, Hawaiian Affairs; Hawaiian Homes Commission Act of 1920, as amended

Department of Hawaiian Home Lands
Department-Wide Totals

Table 2

Fiscal Year 2021				
Act 9/SLH 2020	Restrictions	Emergency Appropriations	Total FY21	MOF
\$ 15,532,062.00	\$ (978,212.00)		\$ 14,553,850.00	A
\$ 4,824,709.00			\$ 4,824,709.00	B
\$ 23,318,527.00			\$ 23,318,527.00	N
\$ 3,740,534.00			\$ 3,740,534.00	T
			\$ -	
			\$ -	
\$ 47,415,832.00	\$ (978,212.00)	\$ -	\$ 46,437,620.00	Total
Fiscal Year 2022				
Budget Acts Appropriation	Reductions	Additions	Total FY22	MOF
\$ 15,928,344.00	\$ (1,944,840.00)	\$ 1,944,840.00	\$ 15,928,344.00	A
\$ 4,824,709.00			\$ 4,824,709.00	B
\$ 23,318,527.00			\$ 23,318,527.00	N
\$ 3,740,534.00			\$ 3,740,534.00	T
\$ 7,000,000.00			\$ 7,000,000.00	W
\$ 54,812,114.00	\$ (1,944,840.00)	\$ 1,944,840.00	\$ 54,812,114.00	Total
Fiscal Year 2023				
Budget Acts Appropriation	Reductions	Additions	Total FY23	MOF
\$ 15,928,344.00	\$ (1,944,840.00)	\$ 1,944,840.00	\$ 15,928,344.00	A
\$ 4,824,709.00			\$ 4,824,709.00	B
\$ 23,318,527.00			\$ 23,318,527.00	N
\$ 3,740,534.00			\$ 3,740,534.00	T
\$ 7,000,000.00			\$ 7,000,000.00	W
\$ 54,812,114.00	\$ (1,944,840.00)	\$ 1,944,840.00	\$ 54,812,114.00	Total

Department of Hawaiian Home Lands
Program ID Totals

Table 3

Prog ID	Program Title	MOF	As budgeted (FY21)			Governor's Submittal (FY22)				Governor's Submittal (FY23)			
			Pos (P)	Pos (T)	\$\$\$	Pos (P)	Pos (T)	\$\$\$	Percent Change of \$\$\$\$	Pos (P)	Pos (T)	\$\$\$	Percent Change of \$\$\$\$
HHL 625	Administration and Operating Support	A	200.00		\$ 15,525,842	181.00		\$ 15,928,344	2.59%	181.00		\$ 15,928,344	2.59%
HHL 602	Planning and Development for Hawaiian Homesteads	B			\$ 4,824,709			\$ 4,824,709	0.00%			\$ 4,824,709	0.00%
HHL 602	Planning and Development for Hawaiian Homesteads	N	4.00	2.00	\$ 23,318,527	4.00	2.00	\$ 23,318,527	0.00%	4.00	2.00	\$ 23,318,527	0.00%
HHL 602	Planning and Development for Hawaiian Homesteads	T			\$ 3,740,534			\$ 3,740,534	0.00%			\$ 3,740,534	0.00%
HHL 602	Planning and Development for Hawaiian Homesteads	W			\$ 7,000,000			\$ 7,000,000	0.00%			\$ 7,000,000	0.00%

Department of Hawaiian Home Lands
Budget Decisions

Prog ID	Sub-Org	Description of Request	MOF	Initial Department Requests						Budget and Finance Recommendations						Governor's Decision					
				FY22			FY23			FY22			FY23			FY22			FY23		
				Pos (P)	Pos (T)	\$\$\$	Pos (P)	Pos (T)	\$\$\$	Pos (P)	Pos (T)	\$\$\$	Pos (P)	Pos (T)	\$\$\$	Pos (P)	Pos (T)	\$\$\$	Pos (P)	Pos (T)	\$\$\$
HHL 625	AO	Sufficiently Fund Personnel Costs	A	200.00		\$ 3,126,852	200.00		\$ 3,126,852												
HHL 602	BB	Transfers 6 authorized positions from HHL 602 to HHL 625	N	(4.00)	(2.00)	\$ (417,136)	(4.00)	(2.00)	\$ 417,136												
HHL 625	AO	Transfers 6 authorized positions from HHL 602 to HHL 625	A	4.00	2.00	\$ 417,136	4.00	2.00	\$ 417,136												
HHL 625	AO	Sufficiently fund Other Current Expenses	A			\$ 10,968,680			\$ 10,968,680												
HHL 625	AO	Purpose 4: Sufficiently fund repair and maintenance costs	A			\$ 5,823,000			\$ 4,323,000												
HHL 625	AO	Sufficiently fund rehabilitation projects	A			\$ 14,519,100			\$ 14,704,100												
HHL 625	AO	Reduce total Other Current Expenses by implementing strict cost cutting measures	A			\$ (1,956,420)			\$ (1,956,420)												
HHL 625	AO	Trade off Other Current Expenses to fund unfunded positions from Act 9, SLH 2020	A									(\$1,944,840)			(\$1,944,840)			(\$1,944,840)		(\$1,944,840)	
HHL 625	AO	Trade off Other Current Expenses to fund unfunded positions from Act 9, SLH 2020	A							51.00		\$1,944,840	51.00		\$1,944,840	51.00		\$1,944,840	51.00	\$1,944,840	
HHL 625	AO	Abolish unfunded positions	A							(19.00)		\$15,928,344	(19.00)		\$15,928,344	(19.00)		\$15,928,344	(19.00)	\$15,928,344	
HHL 602	BB	Revolving Fund Ceiling for NAHASDA loans to beneficiaries	W									\$7,000,000			\$7,000,000			\$7,000,000		\$7,000,000	

Department of Hawaiian Home Lands
Proposed Budget Reductions

Table 5

Prog ID	Sub-Org	Description of Reduction	Impact of Reduction	MOF	FY22			FY23			FY21 Restriction (Y/N)
					Pos (P)	Pos (T)	\$\$\$\$	Pos (P)	Pos (T)	\$\$\$\$	
HHL 625	AO	Abolish 19 Unfunded Positions	Delayed services and project completion times due to reduction in optimal human resources; reduction in service capacity to DHHL beneficiaries	A	(19.00)		\$ -	(19.00)		0.00	N

Department of Hawaiian Home Lands
Proposed Budget Additions

Table 6

<u>Prog ID</u>	<u>Sub-Org</u>	<u>Addition Type</u>	<u>Prog ID Priority</u>	<u>Dept-Wide Priority</u>	<u>Description of Addition</u>	<u>Justification</u>	<u>MOF</u>	<u>FY22</u>			<u>FY23</u>		
								<u>Pos (P)</u>	<u>Pos (T)</u>	<u>\$\$\$</u>	<u>Pos (P)</u>	<u>Pos (T)</u>	<u>\$\$\$</u>
HHL 602	BB	FF	1	1	Establish a NAHASDA (federal funds) revolving loan fund and ceiling	Establishes a revolving loan fund and ceiling for federally-funded (Native Hawaiian Housing Block Grant) mortgage loans for DHHL beneficiaries	W			\$7,000,000			\$7,000,000

Department of Hawaiian Home Lands
 FB 2019 - 2021 Restrictions

Table 7

<u>Fiscal Year</u>	<u>Prog ID</u>	<u>Sub-Org</u>	<u>MOF</u>	<u>Budgeted by Dept</u>	<u>Restriction</u>	<u>Difference Between Budgeted & Restricted</u>	<u>Percent Difference</u>	<u>Impact</u>
2019	HHL 625	AO	A	\$ 25,120,730	\$ 625,240	\$ 24,495,490	2.49%	Difference was funded by DHHL special and trust funds
2020	HHL 625	AO	A	\$ 18,638,060	\$ 1,546,568	\$ 17,091,492	8.30%	Difference was funded by DHHL special and trust funds
2021	HHL 625	AO	A	\$ 15,532,062	\$ 489,106	\$ 15,042,956	3.15%	Difference was funded by DHHL special and trust funds

Department of Hawaiian Home Lands
 Emergency Appropriation Requests

Table 8

<u>Prog ID</u>	<u>Description of Request</u>	<u>Explanation of Request</u>	<u>MOF</u>	<u>Pos (P)</u>	<u>Pos (T)</u>	<u>\$\$\$</u>
	None					

Department of Hawaiian Home Lands
Expenditures Exceeding Appropriation Ceilings in FY20 and FY21

Table 9

<u>Prog ID</u>	<u>MOF</u>	<u>Date</u>	<u>Appropriation</u>	<u>Amount Exceeding Appropriation</u>	<u>Percent Exceeded</u>	<u>Reason for Exceeding Ceiling</u>	<u>Legal Authority</u>	<u>Recurring (Y/N)</u>	<u>GF Impact (Y/N)</u>
				None					

Department of Hawaiian Home Lands
 Intradepartmental Transfers in FY20 and FY21

Table 10

<u>Actual or Anticipated Date of Transfer</u>	<u>MOF</u>	<u>Pos (P)</u>	<u>Pos (T)</u>	<u>\$\$\$</u>	<u>From Prog ID</u>	<u>Percent of Program ID Appropriation Transferred From</u>	<u>To Prog ID</u>	<u>Percent of Receiving Program ID Appropriation</u>	<u>Reason for Transfer</u>	<u>Recurring (Y/N)</u>
None										

Department of Hawaiian Home Lands
Vacancy Report as of November 30, 2020

Table 11

	Prog ID	Sub-Org	Date of Vacancy	Expected Fill Date	Position Number	Position Title	Exempt (Y/N)	SR Level	BU Code	Perm Temp (P/T)	FTE	MOF	Budgeted Amount	Actual Salary Last Paid	Authority to Hire (Y/N)	Occupied by 89 Day Hire (Y/N)	# of 89 Hire Appts	Describe if Filled by other Means	Priority # to Retain				
43	HHL625AO	3109020000	12/1/1995		00106415	Appraisal/Technical Svcs Mgr	Y	SRNA	23	P	1.00	A	\$ -	\$ 54,228	N	N							
3	HHL625AO	3105030400	2/19/2000		00100555	HHL Homestead Lease Asst	Y	SRNA	3	P	1.00	A	\$ -	\$ 27,480	N	N							
1	HHL625AO	3103020000	12/31/2007		00029872	Program Budget Analyst IV	N	SR22	73	P	1.00	A	\$ -	\$ 62,424	Y	N							
18	HHL625AO	3105040000	12/31/2007		00038085	Mortgage Loan Specialist	N	SR20	13	P	1.00	A	\$ -	\$ 53,364	Y	N							
36	HHL625AO	3106010000	7/1/2009		00038169	Homestead Housing Dev Manager	N	EM05	35	P	1.00	A	\$ -	\$ 95,928	Y	N							
26	HHL625AO	3104500000	11/1/2010		00117234	Hmstd Svcs Administrative Asst	Y	SRNA	73	P	1.00	A	\$ -	\$ 67,488	N	N							
44	HHL625AO	3109020000	8/21/2012		00101260	Legal Assistant II	N	SR18	13	P	1.00	A	\$ -	\$ 45,576	Y	N							
53	HHL625AO	3101000000	2/16/2013		00106119	Hhl Land Issues Officer	Y	SRNA	73	P	1.00	A	\$ -	\$ 88,848	N	N							
28	HHL625AO	3106010000	12/31/2013		00102454	HHL Hmstd Devlpmt Spclt IV	Y	SRNA	13	P	1.00	A	\$ -	\$ 67,512	N	N							
61	HHL625AO	3102000000	6/1/2014		00038083	Planning Program Manager	N	EM05	35	P	1.00	A	\$ -	\$106,200	Y	N							
41	HHL625AO	3109030000	12/31/2014		00038097	Land Agent V	N	SR24	13	P	1.00	A	\$ -	\$ 73,032	Y	N							
45	HHL625AO	3109000000	7/1/2015		00102961	Hhl Land Mgmt Administrator	Y	SRNA	93	P	1.00	A	\$ -	\$ 99,504	N	N							
19	HHL625AO	3105030100	12/15/2015		00106417	Hhl General Laborer I	N	BC02	1	P	1.00	A	\$ -	\$ 36,684	Y	N							
32	HHL625AO	3106010000	12/31/2016		00102452	Homestead Housing Spclt VI	Y	SRNA	13	P	1.00	A	\$ -	\$ 85,020	N	N							
33	HHL625AO	3106010000	8/1/2017		00102451	Homestead Housing Specialist V	Y	SRNA	13	P	1.00	A	\$ -	\$ 70,928	N	N							
54	HHL625AO	3101000000	12/30/2017		00102960	Special Asst, Hhl Claims	Y	SRNA	73	P	1.00	A	\$ -	\$ 86,304	N	N							
21	HHL625AO	3105030100	1/20/2018		00009584	Homestead District Supvr II	N	SR24	23	P	1.00	A	\$ -	\$ 58,302	Y	N							
56	HHL625AO	3101000000	2/2/2018		00116927	HHL Secretary III	Y	SRNA	63	P	1.00	A	\$ -	\$ 48,776	N	N							
22	HHL625AO	3105010000	3/1/2018		00106190	Homestead Applications Clk II	Y	SRNA	3	P	1.00	A	\$ -	\$ 32,856	N	N							
55	HHL625AO	3101000000	5/1/2018		00100438	Hhl Development Officer	Y	SRNA	73	P	1.00	A	\$ -	\$ 97,080	N	N							
14	HHL625AO	3105030400	5/16/2018		00101259	Hhl Legal Assistant III	Y	SRNA	13	P	1.00	A	\$ -	\$ 56,064	N	N							
5	HHL625AO	3104020000	7/1/2018		00106409	Accountant IV	N	SR22	13	P	1.00	A	\$ -	\$ 64,476	Y	N							
12	HHL625AO	3105030300	7/1/2018		00117479	HHL Account Clerk III	Y	SRNA	3	P	1.00	A	\$ -	\$ 38,364	N	N							
35	HHL625AO	3106010000	7/1/2018		00102448	Homestead Housing Spclt III	Y	SRNA	13	P	1.00	A	\$ -	\$ 56,064	N	N							
2	HHL625AO	3103010000	9/4/2018		00028956	Departmental HR Officer II	N	EM03	35	P	1.00	A	\$ -	\$ 88,896	Y	N							
15	HHL625AO	3105030500	10/1/2018		00122504	Land Agent III	N	SR18	13	P	1.00	A	\$ -	\$ 45,288	Y	N							
6	HHL625AO	3104010000	12/1/2018		00026382	Account Clerk III	N	SR11	3	P	1.00	A	\$ -	\$ 37,752	Y	N							
37	HHL625AO	3106000000	12/31/2018		00108403	Hhl Land Develop Administrator	Y	SRNA	93	P	1.00	A	\$ -	\$ 116,112	N	N							
38	HHL625AO	3106000000	1/7/2019		00101723	HHL Office Assistant IV	Y	SRNA	3	P	1.00	A	\$ -	\$ 32,664	N	N							
52	HHL625AO	3101000000	4/26/2019		00106187	HHL Office Assistant III	Y	SRNA	3	P	1.00	A	\$ -	\$ 31,440	N	N							
25	HHL625AO	3105040000	5/1/2019		00116671	HHL Mortgage Loan Specialist	Y	SRNA	13	P	1.00	A	\$ -	\$ 50,916	N	N							
30	HHL625AO	3106030000	5/3/2019		00101073	Engineer V	Y	SRNA	23	P	1.00	A	\$ -	\$ 95,430	N	N							
34	HHL625AO	3106010000	7/20/2019		00102450	Homestead Housing Spclt IV	Y	SRNA	13	P	1.00	A	\$ -	\$ 58,560	N	N							
17	HHL625AO	3105030600	9/14/2019		00106408	Equipment Operator III	Y	SRNA	1	P	1.00	A	\$ -	\$ 56,826	N	N							
11	HHL625AO	3105030300	9/24/2019		00102955	Homestead Assistant II	Y	SRNA	3	P	1.00	A	\$ -	\$ 36,732	N	N							
20	HHL625AO	3105030100	9/28/2019		00100486	Homestead Assistant II	Y	SRNA	3	P	1.00	A	\$ -	\$ 36,733	N	N							
57	HHL625AO	3102000000	9/28/2019		00102945	Hhl Program Planner	Y	SRNA	13	P	1.00	A	\$ -	\$59,613	N	N							
49	HHL625AO	3109030000	10/5/2019		00105800	Hhl Land Agent IV	Y	SRNA	13	P	1.00	A	\$ -	\$ 72,530	N	N							
23	HHL625AO	3105010000	12/1/2019		00102957	Hhl Application Officer	Y	SRNA	13	P	1.00	A	\$ -	\$ 60,900	N	N							
58	HHL625AO	3102000000	12/1/2019		00111868	Program Specialist V	Y	SRNA	13	P	1.00	A	\$ -	\$71,232	N	N							
7	HHL625AO	3104000000	12/31/2019		00001401	Cashier I	N	SR10	3	P	1.00	A	\$ -	\$ 50,304	Y	N							
4	HHL625AO	3104000000	1/16/2020		00112587	HHL Office Assistant III	Y	SRNA	3	P	1.00	A	\$ -	\$ 32,664	N	N							
24	HHL625AO	3103050000	3/16/2020		00100205	Office Assistant IV	N	SR10	3	P	1.00	A	\$ -	\$ 32,656	Y	N							
10	HHL625AO	3105030300	4/1/2020		00001410	Water System Maintenance Hlpr	N	BC05	1	P	1.00	A	\$ -	\$ 47,712	Y	N							
13	HHL625AO	3105030400	4/1/2020		00008554	Homestead District Supvr III	N	SR26	23	P	1.00	A	\$ -	\$ 86,700	Y	N							
31	HHL625AO	3106010000	5/1/2020		00122364	Hmstd Housing Spclt IV	Y	SRNA	13	P	1.00	A	\$ 56,064	\$ 58,560	N	N							
40	HHL625AO	3109020000	5/1/2020		00038098	Land Agent IV	N	SR22	13	P	1.00	A	\$ 73,776	\$ 80,112	Y	N							
50	HHL625AO	3109030000	5/9/2020		00048582	Land Agent IV	N	SR22	13	P	1.00	A	\$ -	\$ 52,957	Y	N							
9	HHL625AO	3105030300	7/1/2020		00001403	Homestead District Supvr I	N	SR22	13	P	1.00	A	\$ -	\$ 52,957	Y	N							
59	HHL625AO	3102000000	7/1/2020		00120447	Planner V	N	SR24	13	P	1.00	A	\$ -	\$59,613	Y	N							
60	HHL625AO	3102000000	7/1/2020		00102939	Program Specialist V	N	SR24	13	P	1.00	A	\$ -	\$59,613	Y	N							
39	HHL625AO	3109010000	8/1/2020		00106110	Office Assistant IV	N	SR10	3	P	1.00	A	\$ 31,548	\$ 34,020	Y	N							
47	HHL625AO	3109030000	8/1/2020		00117165	HHL Land Agent/Enforcement Ofcr	Y	SRNA	13	P	1.00	A	\$ 67,044	\$ 69,876	N	N							
46	HHL625AO	3109030000	8/15/2020		00106411	Hhl Land Agent/Enforce Offcr I	Y	SRNA	13	P	1.00	A	\$ 58,308	\$ 69,876	N	N							
29	HHL625AO	3106030000	9/1/2020		00101715	HHL Contract Assistant	Y	SRNA	3	P	1.00	A	\$ 36,924	\$ 39,720	N	N							
51	HHL625AO	3109010000	9/1/2020		00106412	HHL Office Assistant IV	Y	SRNA	3	P	1.00	A	\$ 44,892	\$ 46,476	N	N							
27	HHL625AO	3103030000	9/5/2020		00122477	Information Specialist IV	N	SR22	13	P	1.00	A	\$ 50,772	\$ 55,200	Y	N							
16	HHL625AO	3105030600	9/16/2020		00104354	HHL Office Assistant III	Y	SRNA	3	P	1.00	A	\$ 30,240	\$ 30,240	N	N							
8	HHL625AO	3105030200	10/1/2020		00006030	Homestead Assistant II	N	SR15	3	P	1.00	A	\$ 59,088	\$ 61,176	Y	N							
42	HHL625AO	3109010000			00123197	Program Specialist V	N	SR24	13	P	1.00	A	\$ -	\$ -	Y	N							
48	HHL625AO	3109030000			00122971	Land Agent V	N	SR24	13														

Positions Established by Acts other than the State Budget as of November 30, 2020

<u>Prog ID</u>	<u>Sub-Org</u>	<u>Date Established</u>	<u>Legal Authority</u>	<u>Position Number</u>	<u>Position Title</u>	<u>Exempt (Y/N)</u>	<u>SR Level</u>	<u>BU Code</u>	<u>T/P</u>	<u>MOF</u>	<u>FTE</u>	<u>Annual Salary</u>	<u>Filled (Y/N)</u>	<u>Occupied by 89 Day Hire (Y/N)</u>
----------------	----------------	-------------------------	------------------------	------------------------	-----------------------	---------------------	-----------------	----------------	------------	------------	------------	----------------------	---------------------	--------------------------------------

None

Department of Hawaiian Home Lands
Overtime Expenditure Summary

Table 13

Prog ID	Sub-Org	Program Title	MOF	FY20 (actual)			FY21 (estimated)			FY22 (budgeted)		
				Base Salary \$\$\$\$	Overtime \$\$\$\$	Overtime Percent	Base Salary \$\$\$\$	Overtime \$\$\$\$	Overtime Percent	Base Salary \$\$\$\$	Overtime \$\$\$\$	Overtime Percent
HHL 625	AO	Administrative and Operating Support	A	\$ 8,714,144	\$ 82,900	1.0%	\$ 8,720,364	\$ 31,099	0.4%	\$ 11,061,486	\$ 83,000	0.8%

Department of xxx
Active Contracts as of December 1, 2020

Table 14

Prog ID	MOF	Amount	Frequency (M/A/O)	Max Value	Outstanding Balance	Term of Contract			Entity	Contract Description	Explanation of How Contract is Monitored	POS Y/N	Category E/L/P/C/G/S/*
						Date Executed	From	To					
HHL625	A	107,603.80	O	\$ 300,000.00	\$ 192,396.20	1/15/2017			WATANABE ING, LLP	LEGAL SERVICES, RICHARD NELSON III VS HHC	Contingent upon Contract Administrator	N	S
HHL602	T	2,992,930.00	O	\$ 2,993,930.00	\$ 1,000.00	10/4/2010			ISEMOTO CONTRACTING CO., LTD.	CONSTRUCTION PUUKAPU HYBRID WATER SYSTEM PROJECT	Contingent upon Contract Administrator	N	S
HHL602	T	45,639.23	O	\$ 63,072.00	\$ 17,432.77	10/4/2010			ISEMOTO CONTRACTING CO., LTD.	CONSTRUCTION PUUKAPU HYBRID WATER SYSTEM PROJECT	Contingent upon Contract Administrator	N	S
HHL602	T	158,497.00	O	\$ 162,044.00	\$ 3,547.00	Supp. 10 - 14			PARADIGM CONSTRUCTION LLC	IFB-12-HHL-001: CONSTRUCTION OF ON AND OFF-SITE INFRASTRUCTURE AND LOT GRADING FOR KAKAINA SUBDIVISION, WAIMANALO OAHU	Contingent upon Contract Administrator	N	S
HHL602	T	2,342,169.07	O	\$ 3,025,541.85	\$ 683,372.78	6/15/2012			GOODFELLOW BROS., INC.	IFB-12-HHL-008 LALAMILO HOUSING PHASE 2A INCREMENT 1 & KAWAIHAE ROAD IMPAT SOUTH KOHALA DITRIBUTION RD.	Contingent upon Contract Administrator	N	S
HHL602	T	0.00	O	\$ 117,834.95	\$ 117,834.95	6/15/2012			GOODFELLOW BROS., INC.	IFB-12-HHL-008 LALAMILO HOUSING PHASE 2A INCREMENT 1 & KAWAIHAE ROAD IMPAT SOUTH KOHALA DITRIBUTION RD.	Contingent upon Contract Administrator	N	S
HHL602	B	5,000.00	O	\$ 8,000.00	\$ 3,000.00	1/1/2017			BLX GROUP LLC	BOND ARBITRAGE REBATE CALCULATIONS OPT OPT TO EXTEND 2-12 MOS.06/30/15 60000.00, 06/30/16 62000.00	Contingent upon Contract Administrator	N	S
HHL602	T	413,442.00	O	\$ 499,850.00	\$ 86,408.00	NTP			ISEMOTO CONTRACTING CO., LTD.	IFB-13-HHL-001 CONSTRUCTION-KAWAIHAE 304.5' AND 632 RESERVOIR SYSTEMREPAIR WORK.	Contingent upon Contract Administrator	N	S
HHL625	A	12,277.50	O	\$ 25,275.00	\$ 12,997.50	5/19/2020			SANDWICH ISLES COMMUNICATIONS,	RFP-13-HHL-002, FURNISHING, DELIVERING, INSTALLING & MAINTAINING ACONTRACTOR-HOSTED VOIP FOR DHHL KAPOLEI OFFICE FACILITY - Supplemental No. 6	Contingent upon Contract Administrator	N	S
HHL602	T	491,894.31	O	\$ 1,423,999.00	\$ 932,104.69	6/3/2014			GOODFELLOW BROS., INC.	IFB-13-HHL-007 LALAMILO HOUSING PHASE 1; KAWAIHAE RD IMPR.	Contingent upon Contract Administrator	N	S
HHL602	N	15,852.36	O	\$ 300,000.00	\$ 284,147.64	NTP			SEGAWA, WESLEY R. AND	INFRASTRUCTURE AND LOT IMPROVEMENT HILO/WAIMANALO OPT TO EXT 2 - 12 MOS	Contingent upon Contract Administrator	N	S
HHL602	B	106,499.54	O	\$ 118,997.96	\$ 12,498.42	4/21/2016			JONIQUE & CO, LLC	IFB-14-HHL-013 CUSTODIAL SVCS FOR DHHL KAPOLEI OFFICE BUILDING OPT TO EXTEND 2-12 MOS.	Contingent upon Contract Administrator	N	S
HHL602	T	53,166.18	O	\$ 62,495.00	\$ 9,328.82	9/21/2016			MITSUMAGA & ASSOCIATES, INC.	ENGINEERING & DESIGN SERVICES FOR KAPAAKEA FLOOD MITIGATION IMPROVEMENTS	Contingent upon Contract Administrator	N	S
HHL602	T	7,284.97	O	\$ 100,000.00	\$ 92,715.03	7/21/2016			SULLIVAN MEHEULA LEE LLLP	LEGAL COUNSEL ON DHHL WATER ISSUESRANKING LIST	Contingent upon Contract Administrator	N	S
HHL602	B	229,416.80	O	\$ 286,771.00	\$ 57,354.20	11/10/2014			SUSTAINABLE RESOURCES GROUP	OHIPILO PLANRANKING LIST	Contingent upon Contract Administrator	N	S
HHL602	N	45,574.30	O	\$ 622,263.00	\$ 576,688.70	11/1/2014			HAWAII HOMEOWNERSHIP CENTER	HOMEOWNERSHIP ASSISTANCE & FINANCIAL LITERACY EDUCATION PROGRAM	Contingent upon Contract Administrator	N	S
HHL625	A	28,860.33	O	\$ 73,680.00	\$ 44,819.67	11/1/2016			JN CONSTRUCTION INC	OPERATION & MAINTENANCE OF LEIALII IRRIGATION WATER SYSTEM	Contingent upon Contract Administrator	N	S
HHL602	A	102,505.02	O	\$ 148,573.24	\$ 46,068.22	10/23/2014			VIATRON SYSTEMS, INC.	DOCUMENT IMAGING PROJECTIFB 6/18/14	Contingent upon Contract Administrator	N	S
HHL602	B	77,102.94	O	\$ 79,581.12	\$ 2,478.18	1/28/2015			ULALIA ENTERPRISES LLC	PAPAKOLEA-KEWALO-KALAWAHINE LANDSCAPING & STREAM CLEANNINGIFB-15-HHL-11	Contingent upon Contract Administrator	N	S
HHL602	T	286,605.86	O	458,082.00	\$ 171,476.14	4/15/2015			OCEANIT LABORATORIES, INC.	ANAHOLA FARM LOTS WATER SYSTEM, PUBLIC WATER SYSTEM NO 432, REPAIRS OFEXISTING WATER TANK & NEW WATER TANK DESIGN	Contingent upon Contract Administrator	N	S
HHL602	T	90,598.50	O	\$ 150,000.00	\$ 59,401.50	5/18/2019			NOHONANI LANDSCAPE, LLC	SUPPLEMENTAL NO. 2: IFB-15-HHL-004: LANDSCAPE MAINTENANCE OF PIILANI MAI KE KAI SUBDIVISION, PHASE 1 & 2, ANAHOLA RESIDENCE LOTS	Contingent upon Contract Administrator	N	S

Department of xxx
Active Contracts as of December 1, 2020

Table 14

HHL602	N	48,750.00	O	\$ 225,000.00	\$ 176,250.00	5/14/2015		ACM CONSULTANTS, INC.	APPRAISAL SVCS FOR RESIDENTIAL PROPERTIES OPT TO EXTEND 1 YR.	Contingent upon Contract Administrator	N	S
HHL602	N	50,962.47	O	100,000.00	\$ 49,037.53	8/19/2015		NANAKULI HOUSING CORPORATION	LEASE CANCELLATION & FORECLOSURE PREVENTION. OPT TO EXT 1YR	Contingent upon Contract Administrator	N	S
HHL602	N	103,891.66	O	200,000.00	\$ 96,108.34	8/19/2015		WAI, HELEN N., LLC	LEASE CANCELLATION & FORECLOSURE PREVENTION - OPT TO EXT 1YR	Contingent upon Contract Administrator	N	S
HHL602	T	17,362.28	O	\$ 100,000.00	\$ 82,637.72	12/1/2015		UNDERGROUND SERVICES, INC.	ISLANDWIDE (OAHU) SEWERAGE SPILL RESPONSERFQ #15-HHL-001	Contingent upon Contract Administrator	N	S
HHL602	A	32,671.47	O	49,591.60	\$ 16,920.13	5/1/2016		CULTURAL SURVEYS HAWAII, INC.	NATIVE AMERICAN GRAVES PROTECTION & REPATRIATION PROCEDURES OPT TOEXTEND 1YR.	Contingent upon Contract Administrator	N	S
HHL602	T	818,612.94	O	\$ 1,000,000.00	\$ 181,387.06	5/20/2016		GROUP 70 INTERNATIONAL, INC.	PROFESSIONAL ENGINEERING SVCS FOR VARIOUS LOCATION ON OAHU	Contingent upon Contract Administrator	N	S
	T	526,661.86	O	999,146.00	\$ 472,484.14	6/1/2016		BOWERS + KUBOTA CONSULTING INC	CONSTRUCTION MANAGEMENT SVCS FOR VARIOUS PROJECTS ON KAUAI	Contingent upon Contract Administrator	N	S
HHL602	C	97,983.86	O	103,200.00	\$ 5,216.14	6/1/2016		BOWERS + KUBOTA CONSULTING INC	CONSTRUCTION MANAGEMENT SVCS FOR VARIOUS PROJECTS ON KAUAI	Contingent upon Contract Administrator	N	S
HHL602	C	490,000.00	O	495,000.00	\$ 5,000.00	4/1/2016		KALAMAULA HOMESTEADERS	PLAN, DESIGN & CONSTRUCTION FOR HTE REDEVELOPMENT OF THE KIOWEA PARKFACILITIES	Contingent upon Contract Administrator	N	S
HHL602	N	1,352,328.73	O	1,660,059.80	\$ 307,731.07	6/1/2016		COMMUNITY PLANNING AND	ENGINEERING SVCS FOR E KAPOLEI IIC INCREMENT IIC	Contingent upon Contract Administrator	N	S
HHL602	T	0.00	O	16,313.60	\$ 16,313.60	9/27/2017		COMMUNITY PLANNING AND ENGINEERING, INC.	SUPPLEMENTAL NO. 1 - PROFESSIONAL ENGINEERING SERVICES FOR EAST KAPOLEI 2C, INCREMENT 2C	Contingent upon Contract Administrator	N	S
HHL602	T	0.00	O	20,724.00	\$ 20,724.00			COMMUNITY PLANNING AND ENGINEERING, INC.	SUPPLEMENTAL NO. 2: PROFESSIONAL ENGINEERING SERVICES FOR EAST KAPOLEI 2C, INCREMENT 2C	Contingent upon Contract Administrator	N	S
AGS221	C	0.00	O	\$ 75,000.00	\$ 75,000.00	6/20/2016		PANAWEA COMMUNITY ALLIANCE	PLAN & DESIGN OF THE KAMOLEAO CULTURAL RESOURCE CTR	Contingent upon Contract Administrator	N	S
HHL602	T	69,000.00	O	70,000.00	\$ 1,000.00	6/24/2016		MOLOKAI COMMUNITY SERVICE	DHHL AGRICULTURE PEER-TO-PEER PILOT GRANT PROGRAMNATURAL FARMING SYSTEMS TRAINING	Contingent upon Contract Administrator	N	S
HHL602	C	2,346,822.80	O	3,250,000.00	\$ 903,177.20	11/1/2016		PBR HAWAII & ASSOCIATES, INC.	COMMUNITY & INFRASTRUCTURE DEVELOPMENT PLANNING FOR THE PULEHUNUI MASTER PLAN	Contingent upon Contract Administrator	N	S
HHL602	T	75,102.72	O	100,000.00	\$ 24,897.28	8/1/2016		SCHEUER, JONATHAN LIKEKE, PH.D	NATIVE HAWAIIAN REHABILITATION FUND STRATEGIC PLAN	Contingent upon Contract Administrator	N	S
HHL602	C	931,458.84	O	2,896,800.00	\$ 1,965,341.16	NTP		GOODFELLOW BROS., INC.	IFB-16-HHL-003 ANAHOLA RESERVOIR IMPR PROJECT	Contingent upon Contract Administrator	N	S
HHL602	C	500,000.00	O	580,000.00	\$ 80,000.00	4/4/2016		MOLOKAI HOMESTEAD FARMER'S	DESIGN, CONSTRUCTION & EQUIPMENT FOR REPAIRS, IMPROVEMENTS & INSTALLATIOOF RENEWABLE ENERGY SYSTEMS FOR THE LANIKEHA CENTER VILLAGE3S OF LAIOPUA BRUSH	Contingent upon Contract Administrator	N	S
HHL602	T	106,634.06	O	188,599.19	\$ 81,965.13	7/25/2016		AGRO RESOURCES, INC.	CLEARING & MAINTENANCE IFB-16-HHL-010OPT TO EXTEND 2-24MOS.	Contingent upon Contract Administrator	N	S
HHL602	C	950,827.00	O	1,000,000.00	\$ 49,173.00	8/1/2016		R.M. TOWILL CORPORATION	PROFESSIONAL ENGINEERING SERVICES FOR PAKOLEA SEWER IMPROVEMENTS AND SLOPE STABILIZATION	Contingent upon Contract Administrator	N	S
HHL602	C	29,755.00	O	50,003.00	\$ 20,248.00	8/1/2020		R. M. TOWILL CORPORATION	PROFESSIONAL ENGINEERING SERVICES FOR PAKOLEA SEWER IMPROVEMENTS AND SLOPE STABILIZATION	Contingent upon Contract Administrator	N	S
	T	110,850.04	O	250,000.00	\$ 139,149.96	9/14/2016		R.M. TOWILL CORPORATION	PROFESSIONAL ENGINEERING SERVICES FOR VARIOUS LOCATIONS IN WEST HAWAII, ISLAND OF HAWAII	Contingent upon Contract Administrator	N	S
HHL625	A	1,275.00	O	5,000.00	\$ 3,725.00	8/11/2016		WENDEL M. ISHIDA	APPRAISAL SERVICES FOR DHHL RESIDENTIAL PROPERTIES LOCATED ON KAUAI	Contingent upon Contract Administrator	N	S
HHL625	A	227,970.66	O	229,092.00	\$ 1,121.34	9/1/2016		UNIVERSITY OF HAWAII	AGRICULTURAL EDUCATION SERVICES	Contingent upon Contract Administrator	N	S

Department of xxx
Active Contracts as of December 1, 2020

Table 14

HHL625	A	17,300.00	O	20,000.00	\$ 2,700.00	11/1/2016		KESAJI, THEODORE R. DBA VALLEY ISLE APPRAISAL	APPRAISAL SERVICES FOR RESIDENTIAL PROPERTIES LOCATED ON HAWAIIAN HOME LANDS - STATEWIDE	Contingent upon Contract Administrator	N	S
HHL602	B	0.00	O	15,000.00	\$ 15,000.00	11/1/2016		KESAJI, THEODORE R. DBA VALLEY ISLE APPRAISAL	APPRAISAL SERVICES FOR RESIDENTIAL PROPERTIES LOCATED ON HAWAIIAN HOME LANDS - STATEWIDE	Contingent upon Contract Administrator	N	S
HHL602	T	15,790.68	O	65,489.79	\$ 49,699.11	2/1/2017		AKINAKA & ASSOCIATES, LTD.	LAIOPUA VILLAGE 4 SUBDIVISION, PHASE 2 - HEMA	Contingent upon Contract Administrator	N	S
HHL602	T	0.00	O	21,684.11	\$ 21,684.11	2/1/2017		AKINAKA & ASSOCIATES, LTD.	LAIOPUA VILLAGE 4 SUBDIVISION, PHASE 2 - HEMA	Contingent upon Contract Administrator	N	S
HHL602	T	12,795.09	O	13,419.52	\$ 624.43	2/1/2017		AKINAKA & ASSOCIATES, LTD.	LAIOPUA VILLAGE 4 SUBDIVISION, PHASE 2 - HEMA	Contingent upon Contract Administrator	N	S
HHL602	T	0.00	O	13,761.83	\$ 13,761.83	2/1/2017		AKINAKA & ASSOCIATES, LTD.	LAIOPUA VILLAGE 4 SUBDIVISION, PHASE 2 - HEMA	Contingent upon Contract Administrator	N	S
HHL602	T	4,147.10	O	5,325.02	\$ 1,177.92	2/1/2017		AKINAKA & ASSOCIATES, LTD.	LAIOPUA VILLAGE 4 SUBDIVISION, PHASE 2 - HEMA	Contingent upon Contract Administrator	N	S
HHL602	T	16,290.94	O	17,339.39	\$ 1,048.45	2/1/2017		AKINAKA & ASSOCIATES, LTD.	LAIOPUA VILLAGE 4 SUBDIVISION, PHASE 2 - HEMA	Contingent upon Contract Administrator	N	S
HHL602	T	0.00	O	24,625.09	\$ 24,625.09	2/1/2017		AKINAKA & ASSOCIATES, LTD.	LAIOPUA VILLAGE 4 SUBDIVISION, PHASE 2 - HEMA	Contingent upon Contract Administrator	N	S
HHL602	T	2,642.28	O	3,477.00	\$ 834.72	2/1/2017		AKINAKA & ASSOCIATES, LTD.	LAIOPUA VILLAGE 4 SUBDIVISION, PHASE 2 - HEMA	Contingent upon Contract Administrator	N	S
HHL602	T	88,367.39	O	131,293.29	\$ 42,925.90	2/1/2017		AKINAKA & ASSOCIATES, LTD.	LAIOPUA VILLAGE 4 SUBDIVISION, PHASE 2 - HEMA	Contingent upon Contract Administrator	N	S
HHL602	T	0.00	O	123,584.96	\$ 123,584.96	2/1/2017		AKINAKA & ASSOCIATES, LTD.	LAIOPUA VILLAGE 4 SUBDIVISION, PHASE 2 - HEMA	Contingent upon Contract Administrator	N	S
HHL602	T	0.00	O	18,769.00	\$ 18,769.00	2/1/2017		AKINAKA & ASSOCIATES, LTD.	LAIOPUA VILLAGE 4 SUBDIVISION, PHASE 2 - HEMA	Contingent upon Contract Administrator	N	S
HHL602	N	127,620.00	O	129,000.00	\$ 1,380.00	12/30/2016		GROUP 70 INTERNATIONAL, INC.	HOOLEHUA WATER SYSTEM IMPROVEMENTS, MOLOKAI	Contingent upon Contract Administrator	N	S
HHL602	N	860,950.00	O	862,000.00	\$ 1,050.00	12/30/2016		GROUP 70 INTERNATIONAL, INC.	HOOLEHUA WATER SYSTEM IMPROVEMENTS, MOLOKAI	Contingent upon Contract Administrator	N	S
HHL602	N	29,400.00	O	126,000.00	\$ 96,600.00	12/30/2016		GROUP 70 INTERNATIONAL, INC.	HOOLEHUA WATER SYSTEM IMPROVEMENTS, MOLOKAI	Contingent upon Contract Administrator	N	S
HHL602	N	42,035.77	O	46,125.00	\$ 4,089.23	12/30/2016		GROUP 70 INTERNATIONAL, INC.	HOOLEHUA WATER SYSTEM IMPROVEMENTS, MOLOKAI	Contingent upon Contract Administrator	N	S
HHL602	T	288,990.78	O	500,000.00	\$ 211,009.22	NTP		SSFM INTERNATIONAL, INC.	CONSTRUCTION MANAGEMENT SERVICES FOR LALAMILO, LAIOPUA, PUUKAPU, KAWAIHAE & OTHER WEST HAWAII DEVELOPMENTS	Contingent upon Contract Administrator	N	S
HHL602	T	0.00	O	250,000.00	\$ 250,000.00	NTP		SSFM INTERNATIONAL, INC.	CONSTRUCTION MANAGEMENT SERVICES FOR LALAMILO, LAIOPUA, PUUKAPU, KAWAIHAE & OTHER WEST HAWAII DEVELOPMENTS	Contingent upon Contract Administrator	N	S
HHL602	N	6,916.89	O	100,000.00	\$ 93,083.11	NTP		OCEANIT LABORATORIES, INC.	ANAHOLA FARM LOTS WATER PROJECT	Contingent upon Contract Administrator	N	S
HHL602	N	641,940.21	O	764,279.00	\$ 122,338.79	NTP		OCEANIT LABORATORIES, INC.	ANAHOLA FARM LOTS WATER PROJECT	Contingent upon Contract Administrator	N	S
HHL602	N	38,273.10	O	72,000.00	\$ 33,726.90	NTP		OCEANIT LABORATORIES, INC.	ANAHOLA FARM LOTS WATER PROJECT	Contingent upon Contract Administrator	N	S
HHL602	N	65,762.64	O	71,000.00	\$ 5,237.36	NTP		OCEANIT LABORATORIES, INC.	ANAHOLA FARM LOTS WATER PROJECT	Contingent upon Contract Administrator	N	S
HHL602	T	0.00	O	25,000.00	\$ 25,000.00	4/1/2017		ENGINEERS SURVEYORS HAWAII,	RESIDENTIAL, AGRICULTURAL AND PASTORAL HOMESTEAD SURVEYS; STATEWIDE	Contingent upon Contract Administrator	N	S
HHL625	A	9,100.00	O	50,000.00	\$ 40,900.00	4/1/2017		ENGINEERS SURVEYORS HAWAII,	RESIDENTIAL, AGRICULTURAL AND PASTORAL HOMESTEAD SURVEYS; STATEWIDE	Contingent upon Contract Administrator	N	S
HHL625	A	5,200.00	O	50,000.00	\$ 44,800.00	4/1/2017		ENGINEERS SURVEYORS HAWAII,	RESIDENTIAL, AGRICULTURAL AND PASTORAL HOMESTEAD SURVEYS; STATEWIDE	Contingent upon Contract Administrator	N	S
HHL602	T	51,250.00	O	123,000.00	\$ 71,750.00	4/1/2020		WALEA TREES AND LANDSCAPE PROFESSIONALS, INC.	IFB-17-HHL-004: GROUNDS MAINTENANCE OF WAIEHU KOU SUBDIVISION PHASES 2, 3, & 4	Contingent upon Contract Administrator	N	S

Department of xxx
Active Contracts as of December 1, 2020

Table 14

HHL625	A	306,501.35	O	445,061.00	\$ 138,559.65	4/1/2017		AQUA ENGINEERS, INC.	IFB-17-HHL-008: ANAHOLA WATER SYSTEM: OPERATION & MAINTENANCE, PUU OPAE DITCH WATER SYSTEM EMERGENCY & CALL-OUT SERVICES	Contingent upon Contract Administrator	N	S
HHL602	T	48,874.25	O	310,060.88	\$ 261,186.63	4/1/2020		AQUA ENGINEERS, INC.	IFB-17-HHL-008: ANAHOLA WATER SYSTEM: OPERATION & MAINTENANCE, PUU OPAE DITCH WATER SYSTEM EMERGENCY & CALL-OUT SERVICES	Contingent upon Contract Administrator	N	S
HHL602	T	336,900.62	O	350,000.00	\$ 13,099.38	5/15/2017		TOWNSCAPE, INC.	HONOLULU MASTER PLAN & ENVIRONMENTAL ASSESSMENT	Contingent upon Contract Administrator	N	S
HHL602	B	110,828.85	O	200,000.00	\$ 89,171.15	6/1/2017		COMMUNITY PLANNING & ENGINEERING, INC.	PROFESSIONAL ENGINEERING SERVICES FOR VARIOUS LOCATIONS IN EAST KAPOLEI, OAHU	Contingent upon Contract Administrator	N	S
HHL602	B	355,229.98	O	440,448.00	\$ 85,218.02	NTP		LYON ASSOCIATES, INC.	KALAELOA LANDS REDEVELOPMENT INFRASTRUCTURE STUDY	Contingent upon Contract Administrator	N	S
HHL602	N	3,956.31	O	89,199.00	\$ 85,242.69	NTP		SSFM INTERNATIONAL, INC.	CONSTRUCTION MANAGEMENT SERVICES FOR LAIOPUA VILLAGE 4 SUBDIVISION PHASE 2- HEMA	Contingent upon Contract Administrator	N	S
HHL602	N	1,892.76	O	63,739.00	\$ 61,846.24	NTP		SSFM INTERNATIONAL, INC.	CONSTRUCTION MANAGEMENT SERVICES FOR LAIOPUA VILLAGE 4 SUBDIVISION PHASE 2- HEMA	Contingent upon Contract Administrator	N	S
HHL602	N	2,030.42	O	89,976.00	\$ 87,945.58	NTP		SSFM INTERNATIONAL, INC.	CONSTRUCTION MANAGEMENT SERVICES FOR LAIOPUA VILLAGE 4 SUBDIVISION PHASE 2- HEMA	Contingent upon Contract Administrator	N	S
HHL602	N	6,670.14	O	257,086.00	\$ 250,415.86	NTP		SSFM INTERNATIONAL, INC.	CONSTRUCTION MANAGEMENT SERVICES FOR LAIOPUA VILLAGE 4 SUBDIVISION PHASE 2- HEMA	Contingent upon Contract Administrator	N	S
HHL602	T	52,217.73	O	591,038.51	\$ 538,820.78	7/1/2017		SSFM INTERNATIONAL, INC.	CONSTRUCTION MANAGEMENT SERVICES FOR MOLOKAI WATER SYSTEM IMPROVEMENTS	Contingent upon Contract Administrator	N	S
HHL602	T	159,317.74	O	217,092.00	\$ 57,774.26	7/1/2017		UNIVERSITY OF HAWAII	AGRICULTURAL EDUCATION PROGRAM	Contingent upon Contract Administrator	N	S
HHL602	T	0.00	O	350,000.00	\$ 350,000.00	7/1/2017		AUSTIN TSUTSUMI & ASSOCIATES, INC.	ENGINEERING SERVICES FOR VARIOUS DHHL HOMESTEAD SUBDIVISIONS & INFRASTRUCTURE PROJECTS ON MAUI & LANAI	Contingent upon Contract Administrator	N	S
HHL602	T	16,167.80	O	150,000.00	\$ 133,832.20	7/1/2017		ESAKI SURVEYING AND MAPPING, INC.	ENGINEERING CONSULTANT FOR VARIOUS DHHL HOMESTEAD SUBDIVISIONS & INFRASTRUCTURE ON KAUAI	Contingent upon Contract Administrator	N	S
HHL602	T	457,533.10	O	480,190.00	\$ 22,656.90	8/1/2017		FUKUNAGA & ASSOCIATES, INC.	OAHU SEWER SYSTEM IMPROVEMENTS	Contingent upon Contract Administrator	N	S
HHL602	C	377,724.00	O	426,086.00	\$ 48,362.00	8/1/2017		FUKUNAGA & ASSOCIATES, INC.	OAHU SEWER SYSTEM IMPROVEMENTS	Contingent upon Contract Administrator	N	S
HHL602	B	10,000.00	O	100,000.00	\$ 90,000.00	6/15/2017		KA'ANINAI LLC	EDUCATION & TRAINING NONPROFIT CAPACITY BUILDING, PROJECT PLANNING & IMPLEMENTATION	Contingent upon Contract Administrator	N	S
HHL602	T	4,500.00	O	4,900.00	\$ 400.00	6/22/2017		KAUMANA HAWAIIAN HOMES COMMUNITY ASSOCIATION	CAPACITY BUILDING GRANT AWARD- INCREASING MEMBERSHIP; SURVEYING HOMESTEADER & SURROUNDING RESIDENTS ABOUT COMMUNITY ISSUES	Contingent upon Contract Administrator	N	S
HHL602	T	14,000.00	O	15,000.00	\$ 1,000.00	8/4/2017		KEKAHA HAWAIIAN HOMESTEAD ASSOCIATION	AGRICULTURE PEER TO PEER PROGRAM: TRAIN BENEFICIARIES TO PLAN & BUILD RAISED-BED GARDENS	Contingent upon Contract Administrator	N	S
HHL602	T	60,539.23	O	95,832.72	\$ 35,293.49	9/15/2019		PACIFIC ELECTRO MECHANICAL,	IFB-18-HHL-001: SPECIALIZED REPAIR WORK FOR DHHL MOLOKAI WATER SYSTEM	Contingent upon Contract Administrator	N	S
HHL602	T	138,230.18	O	200,000.00	\$ 61,769.82	7/15/2017		DARRELL C. YAGODICH DBA DARRELL YAGODICH CONSULTING	COMMUNITY PLANNING: HAWAIIAN HOME LANDS CLAIMS	Contingent upon Contract Administrator	N	S
HHL602	T	43,000.00	O	69,300.00	\$ 26,300.00	9/26/2017		SUSTAINABLE MOLOKAI	AGRICULTURE PEER TO PEER GRANT: TRAIN HOMESTEAD COOPERATIVE MEMBERS TO DEVELOP AGRICULTURE LOTS INTO COMMERCIAL FARM BUSINESSES	Contingent upon Contract Administrator	N	S

Department of xxx
Active Contracts as of December 1, 2020

Table 14

HHL625	A	260,159.42	O	300,000.00	\$ 39,840.58	9/15/2017		VIATRON SYSTEMS, INC.	SOFTWARE & DATABASE MAINTENANCE, UPGRADES & USE INTERFACE IMPROVEMENTS TO DHHL'S DOCUMENT IMAGING SYSTEM	Contingent upon Contract Administrator	N	S
HHL602	T	137,481.43	O	144,000.00	\$ 6,518.57	10/2/2017		VALLEY ISLE PUMPING, INC.	OPERATION & MAINTENANCE FOR THE SEWER PUMP STATION AT WAIHEHU KOU	Contingent upon Contract Administrator	N	S
HHL602	T	0.00	O	25,000.00	\$ 25,000.00	10/2/2017		VALLEY ISLE PUMPING, INC.	OPERATION & MAINTENANCE FOR THE SEWER PUMP STATION AT WAIHEHU KOU	Contingent upon Contract Administrator	N	S
HHL602	C	54,262.21	O	59,000.00	\$ 4,737.79	1/18/2018		PROMETHEUS CONSTRUCTION	PAPAKOLEA SLOPE STABILIZATION & SEWER IMPROVEMENTS - Supplemental No. 1	Contingent upon Contract Administrator	N	S
HHL602	C	476,956.22	O	482,218.43	\$ 5,262.21	1/18/2018		PROMETHEUS CONSTRUCTION	PAPAKOLEA SLOPE STABILIZATION & SEWER IMPROVEMENTS - Supplemental No. 2	Contingent upon Contract Administrator	N	S
HHL602	T	446,894.56	O	500,000.00	\$ 53,105.44	9/1/2017		GROUP 70 INTERNATIONAL, INC.	PROFESSIONAL ENGINEERING SERVICES FOR VARIOUS INFRASTRUCTURE & LOT IMPROVEMENTS FOR DHHL HOMESTEADS ON MOLOKAI	Contingent upon Contract Administrator	N	S
HHL602	N	27,161.91	O	42,715.00	\$ 15,553.09	NTP		ENGINEERS SURVEYORS HAWAII, INC.	POST CONSTRUCTION - LAIOPUA VILLAGE 4, PHASE 1 (AKAU SUBDIVISION)	Contingent upon Contract Administrator	N	S
HHL602	T	6,042.50	O	60,000.00	\$ 53,957.50	NTP		UNDERGROUND SERVICES, INC.	SEWER SPILL RESPONSE ON OAHU	Contingent upon Contract Administrator	N	S
HHL602	C	789,091.07	O	1,366,854.00	\$ 577,762.93	1/18/2018		THE LIMTIACO CONSULTING GROUP, INC.	CONSTRUCTION MANAGEMENT SERVICES FOR PAPAKOLEA SEWER IMPROVEMENTS	Contingent upon Contract Administrator	N	S
HHL602	T	122,835.87	O	150,000.00	\$ 27,164.13	1/1/2018		JONATHAN LIKEKE SCHEUER, PH.D.	WATER POLICY PLAN IMPLEMENTATION	Contingent upon Contract Administrator	N	S
HHL625	A	139,919.65	O	150,000.00	\$ 10,080.35	2/1/2018		RICHARD L. HOKE JR.	HEARINGS OFFICER FOR DHHL CONTESTED CASE HEARINGS	Contingent upon Contract Administrator	N	S
HHL602	T	0.00	O	50,000.00	\$ 50,000.00	2/1/2020		RICHARD L. HOKE JR.	HEARINGS OFFICER FOR DHHL CONTESTED CASE HEARINGS	Contingent upon Contract Administrator	N	S
HHL602	C	72,668.17	O	99,743.00	\$ 27,074.83	4/1/2018		ARCADIA ARCHITECTURE, INC.	DESIGN SERVICES FOR STREET LIGHTS REPAIRS, REPLACEMENTS, & UPGRADES	Contingent upon Contract Administrator	N	S
HHL602	T	17,918.62	O	117,650.00	\$ 99,731.38	5/1/2018		ECONOMIC & PLANNING SYSTEMS, INC.	TRANSIT ORIENTED DEVELOPMENT IN THE KAULUOKAHAI MASTER PLANNED COMMUNITY	Contingent upon Contract Administrator	N	S
HHL602	B	370.96	O	75,000.00	\$ 74,629.04	7/1/2020		PLANNING CONSULTANTS HAWAII LLC	KAPAAKEA SHORLINE ASSESSMENT STUDY	Contingent upon Contract Administrator	N	S
HHL602	T	25,292.94	O	66,293.00	\$ 41,000.06	NTP		AKINAKA & ASSOCIATES, LTD.	HONOKAIA NON-POTABLE WATER SYSTEM POST ENGINEERING SERVICES	Contingent upon Contract Administrator	N	S
HHL625	A	39,287.58	O	50,000.00	\$ 10,712.42	6/13/2018		CULTURAL SURVEYS HAWAII, INC.	ARCHAEOLOGICAL TECHNICAL SERVICES	Contingent upon Contract Administrator	N	S
HHL602	T	118,908.01	O	150,000.00	\$ 31,091.99	6/1/2018		DUDEK	UNMANNED AERIAL VEHICLE SERVICES	Contingent upon Contract Administrator	N	S
HHL625	A	328,014.91	O	888,228.00	\$ 560,213.09	6/13/2018		BELT COLLINS HAWAII LLC	NORTH KONA WATER DEVELOPMENT EA & PER	Contingent upon Contract Administrator	N	S
HHL625	A	203,340.43	O	300,000.00	\$ 96,659.57	6/15/2018		PLANNING CONSULTANTS HAWAII LLC	HONOKOWAI MASTER PLAN	Contingent upon Contract Administrator	N	S
HHL602	T	250,580.68	O	1,489,700.00	\$ 1,239,119.32	7/2/2018		OKAHARA & ASSOCIATES, INC.	ENGINEERING DESIGN SERVICES FOR HONOMU AGRICULTURAL SUBDIVISION	Contingent upon Contract Administrator	N	S
HHL602	C	0.00	O	150,000.00	\$ 150,000.00	NTP		BOW CONSTRUCTION MANAGEMENT SERVICE, INC.	CONSTRUCTION MANAGEMENT SERVICES FOR WAIANAE COAST EMERGENCY ACCESS ROAD	Contingent upon Contract Administrator	N	S
HHL602	T	148,825.63	O	150,534.00	\$ 1,708.37	6/25/2018		GROUP 70 INTERNATIONAL, INC. DBA G70	DHHL ANAHOLA KULEANA HOMESTEAD SETTLEMENT PLAN	Contingent upon Contract Administrator	N	S
HHL602	T	50,866.18	O	100,000.00	\$ 49,133.82	3/9/2018		GENTRY KAPOLEI DEVELOPMENT LLC	KAULUOKAHAI, INCREMENT 2B	Contingent upon Contract Administrator	N	S
HHL602	T	40,024.29	O	44,000.00	\$ 3,975.71	7/15/2018		GROUP 70 INTERNATIONAL, INC. DBA G70	DHHL LANAI SUBDIVISION APPLICATIONS	Contingent upon Contract Administrator	N	S
HHL602	T	0.00	O	6,000.00	\$ 6,000.00	1/15/2020		GROUP 70 INTERNATIONAL, INC. DBA G70	DHHL LANAI SUBDIVISION APPLICATIONS	Contingent upon Contract Administrator	N	S
HHL602	C	174,623.00	O	2,700,000.00	\$ 2,525,377.00	NTP		GROUP 70 INTERNATIONAL, INC. DBA G70	PROFESSIONAL ENGINEERING & PLANNING SERVICES FOR WAIANAE COAST EMERGENCY ACCESS ROAD	Contingent upon Contract Administrator	N	S

Department of xxx
Active Contracts as of December 1, 2020

Table 14

HHL602	C	0.00	O	150,000.00	\$ 150,000.00	NTP		GROUP 70 INTERNATIONAL, INC. DBA G70	PROFESSIONAL ENGINEERING & PLANNING SERVICES FOR WAIANAE COAST EMERGENCY ACCESS ROAD	Contingent upon Contract Administrator	N	S
HHL602	C	140,921.64	O	148,741.74	\$ 7,820.10	7/1/2018		THE LIMTIACO CONSULTING GROUP, INC.	ENGINEERING SERVICES FOR WAIKUPANAHA AGRICULTURAL LOTS	Contingent upon Contract Administrator	N	S
HHL602	C	450,343.72	O	486,662.93	\$ 36,319.21	7/1/2018		THE LIMTIACO CONSULTING GROUP, INC.	ENGINEERING SERVICES FOR WAIKUPANAHA AGRICULTURAL LOTS	Contingent upon Contract Administrator	N	S
HHL602	C	0.00	O	30,617.39	\$ 30,617.39	7/1/2018		THE LIMTIACO CONSULTING GROUP, INC.	ENGINEERING SERVICES FOR WAIKUPANAHA AGRICULTURAL LOTS	Contingent upon Contract Administrator	N	S
HHL602	C	0.00	O	252,669.19	\$ 252,669.19	7/1/2008		THE LIMTIACO CONSULTING GROUP, INC.	ENGINEERING SERVICES FOR WAIKUPANAHA AGRICULTURAL LOTS	Contingent upon Contract Administrator	N	S
HHL602	C	0.00	O	320,640.00	\$ 320,640.00	7/1/2008		THE LIMTIACO CONSULTING GROUP, INC.	ENGINEERING SERVICES FOR WAIKUPANAHA AGRICULTURAL LOTS	Contingent upon Contract Administrator	N	S
HHL602	C	0.00	O	60,666.65	\$ 60,666.65	7/1/2008		THE LIMTIACO CONSULTING GROUP, INC.	ENGINEERING SERVICES FOR WAIKUPANAHA AGRICULTURAL LOTS	Contingent upon Contract Administrator	N	S
HHL602	T	71,650.00	O	84,300.00	\$ 12,650.00	7/3/2018		AHUPUA'A O MOLOKAI	RFP-18-HHL-006: AGRICULTURE PEER-TOPEER GRANT FOR HANAI A ULU	Contingent upon Contract Administrator	N	S
HHL602	T	20,800.00	O	41,600.00	\$ 20,800.00	6/20/2018		COMMUNITY CAPACITY PROJECTS HAWAII	RFP-18-HHL-002: PU'U OPAE HOME LANDS OF WEST KAUAI AGRICULTURE & WATER PLAN	Contingent upon Contract Administrator	N	S
HHL602	C	617,434.67	O	1,000,000.00	\$ 382,565.33	NTP		COMMUNITY PLANNING AND ENGINEERING, INC.	ENGINEERING SERVICES FOR KEOKEA-WAIOHULI PHASES 1B & 2; KULA ROADWAY SAFETY & DRAINAGE IMPROVEMENTS	Contingent upon Contract Administrator	N	S
HHL602	T	276,483.83	O	399,041.00	\$ 122,557.17	NTP		COMMUNITY PLANNING AND ENGINEERING, INC.	ENGINEERING SERVICES FOR KEOKEA-WAIOHULI PHASES 1B & 2; KULA ROADWAY SAFETY & DRAINAGE IMPROVEMENTS	Contingent upon Contract Administrator	N	S
HHL602	C	138,662.76	O	299,436.00	\$ 160,773.24	NTP		COMMUNITY PLANNING AND ENGINEERING, INC.	ENGINEERING SERVICES FOR KEOKEA-WAIOHULI PHASES 1B & 2; KULA ROADWAY SAFETY & DRAINAGE IMPROVEMENTS	Contingent upon Contract Administrator	N	S
HHL602	C	79,946.30	O	302,371.00	\$ 222,424.70	10/8/2018		R. M. TOWILL CORPORATION	PROFESSIONAL ENGINEERING SERVICES FOR HOOLEHUA & NAIWA SCATTERED LOTS IMPROVEMENTS	Contingent upon Contract Administrator	N	S
HHL602	C	11,400.00	O	47,629.00	\$ 36,229.00			R.M. TOWILL CORPORATION	PROFESSIONAL ENGINEERING SERVICES FOR HOOLEHUA & NAIWA SCATTERED LOTS IMPROVEMENTS	Contingent upon Contract Administrator	N	S
HHL602	T	336,377.36	O	375,710.00	\$ 39,332.64	6/26/2018		HAWAII FOREST INDUSTRY ASSOCIATION	RFP-018-HHL-004: DHHL KEALAKEHE ENDANGERED PLANT RESERVE MANAGEMENT	Contingent upon Contract Administrator	N	S
HHL625	A	89,917.02	O	200,000.00	\$ 110,082.98	6/26/2018		HAWAII FOREST INDUSTRY ASSOCIATION	RFP-018-HHL-004: DHHL KEALAKEHE ENDANGERED PLANT RESERVE MANAGEMENT	Contingent upon Contract Administrator	N	S
HHL602	B	0.00	O	403,256.00	\$ 403,256.00	6/26/2022		HAWAII FOREST INDUSTRY ASSOCIATION	RFP-018-HHL-004: DHHL KEALAKEHE ENDANGERED PLANT RESERVE MANAGEMENT	Contingent upon Contract Administrator	N	S
HHL602	T	0.00	O	500,000.00	\$ 500,000.00	NTP		R. M. TOWILL CORPORATION	PROFESSIONAL ENGINEERING SERVICES FOR WEST HAWAII	Contingent upon Contract Administrator	N	S
HHL602	T	70,000.00	O	100,000.00	\$ 30,000.00	6/20/2018		KA 'OHANA O KAHIKINUI, INC.	RFP-18-HHL-002: PUNAWAI PROJECT & WATER INFRASTRUCTURE IMPROVEMENTS	Contingent upon Contract Administrator	N	S
HHL602	T	177,364.90	O	500,000.00	\$ 322,635.10	NTP		OKAHARA & ASSOCIATES, INC.	PROFESSIONAL ENGINEERING SERVICES FOR EAST HAWAII	Contingent upon Contract Administrator	N	S
HHL602	T	1,033,105.86	O	3,196,408.00	\$ 2,163,302.14	NTP		KAIWA CONSTRUCTION, INC.	IFB-18-HHL-007: ANAHOLA FARM LOTS WATER PROJECT, PHASE 1 WATERLINE REPLACEMENT	Contingent upon Contract Administrator	N	S
HHL602	T	0.00	O	15,000.00	\$ 15,000.00	NTP		KAIWA CONSTRUCTION, INC.	IFB-18-HHL-007: ANAHOLA FARM LOTS WATER PROJECT, PHASE 1 WATERLINE REPLACEMENT	Contingent upon Contract Administrator	N	S
HHL602	T	10,762.44	O	500,000.00	\$ 489,237.56	NTP		AUSTIN, TSUTSUMI & ASSOC., INC.	PROFESSIONAL ENGINEERING SERVICES FOR KAWAIHAE & WEST HAWAII	Contingent upon Contract Administrator	N	S
HHL602	T	234,969.28	O	279,092.00	\$ 44,122.72	9/1/2018		UNIVERSITY OF HAWAII	AGRICULTURE EDUCATION PROGRAM	Contingent upon Contract Administrator	N	S

Department of xxx
Active Contracts as of December 1, 2020

Table 14

HHL602	T	2,200.00	O	26,400.00	\$ 24,200.00	10/1/2020		HEIDI KALEHUAWHE DBA A&H CLEANING SERVICES	IFB-19-HHL-002: CUSTODIAL SERVICES FOR DHHL PAUKUKALO COMMUNITY CENTER	Contingent upon Contract Administrator	N	S
HHL602	C	396,778.98	O	400,000.00	\$ 3,221.02			SSFM INTERNATIONAL, INC.	HANAPEPE HOMESTEAD MASTER PLAN & EA	Contingent upon Contract Administrator	N	S
HHL602	C	313,659.66	O	560,253.82	\$ 246,594.16	NTP		HAWAII ENGINEERING GROUP, INC.	NANAKULI, WAIMANALO & PKE FLOOD CONTROL CHANNEL IMPROVEMENTS	Contingent upon Contract Administrator	N	S
HHL602	C	0.00	O	165,000.00	\$ 165,000.00	NTP		HAWAII ENGINEERING GROUP, INC.	NANAKULI, WAIMANALO & PKE FLOOD CONTROL CHANNEL IMPROVEMENTS	Contingent upon Contract Administrator	N	S
HHL602	C	191,006.67	O	200,000.00	\$ 8,993.33	NTP		GROUP 70 INTERNATIONAL, INC. DBA G70	KAU WATER SYSTEM IMPROVEMENTS	Contingent upon Contract Administrator	N	S
HHL602	C	3,236.26	O	21,320.00	\$ 18,083.74	NTP		GROUP 70 INTERNATIONAL, INC. DBA G70	KAU WATER SYSTEM IMPROVEMENTS	Contingent upon Contract Administrator	N	S
HHL602	C	23,138.32	O	250,000.00	\$ 226,861.68	NTP		JPB ENGINEERING INC.	ENGINEERING SERVICES FOR RETAINING WALLS & SLOPE STABILIZATION IMPROVEMENTS - OAHU	Contingent upon Contract Administrator	N	S
HHL602	C	205,085.88	O	500,000.00	\$ 294,914.12	NTP		SSFM INTERNATIONAL, INC.	ENGINEERING SERVICES FOR THE HANAPEPE SUBDIVISION, PHASE 2 MASTER PLAN & EA	Contingent upon Contract Administrator	N	S
HHL602	T	476,615.95	O	500,000.00	\$ 23,384.05	NTP		HAWAII ENGINEERING GROUP, INC.	ENGINEERING SERVICES FOR INFRASTRUCTURE ASSESSMENTS AND IMPROVEMENTS	Contingent upon Contract Administrator	N	S
HHL602	C	0.00	O	70,000.00	\$ 70,000.00	NTP		HAWAII ENGINEERING GROUP, INC.	ENGINEERING SERVICES FOR INFRASTRUCTURE ASSESSMENTS AND IMPROVEMENTS	Contingent upon Contract Administrator	N	S
HHL602	C	0.00	O	25,000.00	\$ 25,000.00	NTP		HAWAII ENGINEERING GROUP, INC.	ENGINEERING SERVICES FOR INFRASTRUCTURE ASSESSMENTS AND IMPROVEMENTS	Contingent upon Contract Administrator	N	S
HHL602	T	61,328.09	O	250,000.00	\$ 188,671.91	NTP		OKAHARA & ASSOCIATES, INC.	PROFESSIONAL ENGINEERING SERVICES FOR LALAMILO HOUSING, PHASE 1	Contingent upon Contract Administrator	N	S
HHL602	C	0.00	O	296,987.00	\$ 296,987.00	NTP		SSFM INTERNATIONAL, INC.	PROFESSIONAL ENGINEERING SERVICES FOR ENVIRONMENTAL ENGINEERING PLANNING - STATEWIDE	Contingent upon Contract Administrator	N	S
HHL602	A	195,000.00	O	200,000.00	\$ 5,000.00	12/14/2018		LAIOPUA 2020		Contingent upon Contract Administrator	N	S
HHL602	C	180,733.70	O	480,000.00	\$ 299,266.30	NTP		COMMUNITY PLANNING AND ENGINEERING, INC.		Contingent upon Contract Administrator	N	S
HHL602	C	141,798.63	O	700,000.00	\$ 558,201.37	2/12/2019		AUSTIN TSUTSUMI & ASSOCIATES, INC.		Contingent upon Contract Administrator	N	S
HHL625	A	115,298.74	O	225,000.00	\$ 109,701.26	2/7/2019		HELEN N. WAI, LLC		Contingent upon Contract Administrator	N	S
HHL602	T	193,935.10	O	415,000.00	\$ 221,064.90	3/1/2019		AUSTIN, TSUTSUMI & ASSOCIATES, INC.	ENGINEERING SERVICES FOR KAHIKINI ROADWAY REPAIRS	Contingent upon Contract Administrator	N	S
HHL625	A	33,125.72	O	35,000.00	\$ 1,874.28	2/7/2019		KENNY CORPORATION	KAKAINA SUBDIVISION - LEGAL SERVICES	Contingent upon Contract Administrator	N	S
HHL602	C	245,000.00	O	249,000.00	\$ 4,000.00	1/28/2019		LAIOPUA 2020	LAIOPUA 2020 COMMUNITY CENTER, PHASE 2B	Contingent upon Contract Administrator	N	S
HHL602	C	0.00	O	1,000.00	\$ 1,000.00	1/28/2019		LAIOPUA 2020	LAIOPUA 2020 COMMUNITY CENTER, PHASE 2B	Contingent upon Contract Administrator	N	S
HHL625	A	4,000.00	O	7,000.00	\$ 3,000.00	12/12/2018		BLX GROUP LLC	BOND ARBITRAGE REBATE CALCULATION FEES	Contingent upon Contract Administrator	N	S
HHL602	T	0.00	O	25,000.00	\$ 25,000.00	5/3/2019		R. M. TOWILL CORPORATION	LAND SURVEYING SERVICES, STATEWIDE	Contingent upon Contract Administrator	N	S
HHL625	A	0.00	O	50,000.00	\$ 50,000.00	5/3/2019		R.M. TOWILL CORPORATION	LAND SURVEYING SERVICES, STATEWIDE	Contingent upon Contract Administrator	N	S
HHL625	A	0.00	O	50,000.00	\$ 50,000.00	5/3/2019		R.M. TOWILL CORPORATION	LAND SURVEYING SERVICES, STATEWIDE	Contingent upon Contract Administrator	N	S
HHL602	C	453.80	O	1,000.00	\$ 546.20	NTP		OKAHARA & ASSOCIATES, INC.	KAUMANA SUBDIVISION LOT REHABILITATION	Contingent upon Contract Administrator	N	S
HHL602	C	39,718.85	O	49,000.00	\$ 9,281.15	NTP		OKAHARA & ASSOCIATES, INC.	KAUMANA SUBDIVISION LOT REHABILITATION	Contingent upon Contract Administrator	N	S

Department of xxx
Active Contracts as of December 1, 2020

Table 14

HHL602	C	0.00	O	100,000.00	\$ 100,000.00	NTP		COMMUNITY PLANNING AND ENGINEERING, INC.	ENGINEERING SERVICES FOR ARCHAEOLOGICAL PRESERVATION IMPROVEMENTS, KEOKEA-WAIOHULI, MAUI	Contingent upon Contract Administrator	N	S
HHL625	A	4,664.92	O	25,000.00	\$ 20,335.08	3/1/2019		KENNY CORPORATION	KAULUOKAHAI IIB	Contingent upon Contract Administrator	N	S
HHL602	B	206,250.92	O	350,000.00	\$ 143,749.08	8/1/2019		PBR HAWAII & ASSOCIATES, INC.	HONOKOWAI ENVIRONMENTAL ASSESSMENT	Contingent upon Contract Administrator	N	S
HHL602	B	0.00	O	250,000.00	\$ 250,000.00	9/1/2019		GROUP 70 INTERNATIONAL, INC. DBA G70	DHHL ANAHAKI-MO'OMOMI SPECIAL AREA PLAN	Contingent upon Contract Administrator	N	S
HHL602	B	87,311.49	O	250,000.00	\$ 162,688.51	2/1/2020		GROUP 70 INTERNATIONAL, INC. DBA G70	DHHL MALAMA CULTURAL PARK SPECIAL AREA PLAN, MOLOKAI	Contingent upon Contract Administrator	N	S
HHL602	T	0.00	O	780,000.00	\$ 780,000.00	NTP		ISEMOTO CONTRACTING CO., LTD.	HONOKAI'A NON-POTABLE WATER SYSTEM: KFB-19-HHL-006	Contingent upon Contract Administrator	N	S
HHL602	T	0.00	O	289,756.00	\$ 289,756.00	NTP		ISEMOTO CONTRACTING CO., LTD.	HONOKAI'A NON-POTABLE WATER SYSTEM: KFB-19-HHL-006	Contingent upon Contract Administrator	N	S
HHL602	T	153,716.09	O	284,316.00	\$ 130,599.91	NTP		BOWERS + KUBOTA CONSULTING INC	ANAHOLA RESERVOIR IMPROVEMENTS- POST ENGINEERING SERVICES	Contingent upon Contract Administrator	N	S
HHL602	C	99,576.49	O	1,400,000.00	\$ 1,300,423.51	NTP		AUSTIN, TSUTSUMI & ASSOCIATES, INC.	LEIALII PHASE 1B, LEIALII PARKWAY AND HIGHWAY IMPROVEMENTS	Contingent upon Contract Administrator	N	S
HHL602	T	0.00	O	751,000.00	\$ 751,000.00	NTP		AUSTIN, TSUTSUMI & ASSOCIATES, INC.	LEIALII PHASE 1B, LEIALII PARKWAY AND HIGHWAY IMPROVEMENTS	Contingent upon Contract Administrator	N	S
HHL602	T	0.00	O	504,000.00	\$ 504,000.00	NTP		AUSTIN, TSUTSUMI & ASSOCIATES, INC.	LEIALII PHASE 1B, LEIALII PARKWAY AND HIGHWAY IMPROVEMENTS	Contingent upon Contract Administrator	N	S
HHL602	T	301,074.86	O	1,000,000.00	\$ 698,925.14	NTP		SSFM INTERNATIONAL, INC.	CONSTRUCTION MANAGEMENT SERVICES FOR VARIOUS PROJECTS IN MAUI COUNTY	Contingent upon Contract Administrator	N	S
HHL602	C	0.00	O	300,000.00	\$ 300,000.00	NTP		AUSTIN, TSUTSUMI & ASSOCIATES, INC.	KULA ROADWAY SAFETY & ON AND OFF SITE DRAINAGE IMPROVEMENTS- ENGINEERING SERVICES	Contingent upon Contract Administrator	N	S
HHL602	T	4,000.00	O	5,000.00	\$ 1,000.00	8/23/2019		KALALEA/ANEHOLA FARMERS HUI	CAPACITY BUILDING GRANT AWARD FOR WEBSITE IMPROVEMENTS DEVELOPING SOCIAL MEDIA MARKETING TRAINING FACILITIES REPAIR CREATING A BUSINESS CENTER AND INCREASING MEMBERSHIP GROUNDS MAINTENANCE &	Contingent upon Contract Administrator	N	S
HHL602	B	6,965.00	O	83,580.00	\$ 76,615.00	9/11/2019		H & L SERVICES LLC	CUSTODIAL SERVICES FOR DHHL KEAUKAHA BEACH PARK & PUHI BAY	Contingent upon Contract Administrator	N	S
HHL602	C	0.00	O	75,000.00	\$ 75,000.00	8/1/2019		KAILAPA COMMUNITY ASSOCIATION	KAILAPA COMMUNITY RESOURCE CENTER	Contingent upon Contract Administrator	N	S
HHL602	C	0.00	O	25,000.00	\$ 25,000.00	8/1/2019		KAILAPA COMMUNITY ASSOCIATION	KAILAPA COMMUNITY RESOURCE CENTER	Contingent upon Contract Administrator	N	S
HHL602	C	480,000.00	O	500,000.00	\$ 20,000.00	8/1/2019		KAILAPA COMMUNITY ASSOCIATION	KAILAPA COMMUNITY RESOURCE CENTER	Contingent upon Contract Administrator	N	S
HHL602	C	192,007.52	O	200,000.00	\$ 7,992.48	10/1/2019		GRAY, HONG, NOJIMA & ASSOCIATES, INC.	RESIDENTIAL DEVELOPMENT AT THE FORMER VOICE OF AMERICA SITE	Contingent upon Contract Administrator	N	S
HHL602	C	60,401.65	O	600,000.00	\$ 539,598.35	10/1/2019		GRAY, HONG, NOJIMA & ASSOCIATES, INC.	RESIDENTIAL DEVELOPMENT AT THE FORMER VOICE OF AMERICA SITE	Contingent upon Contract Administrator	N	S
HHL602	T	0.00	O	104,489.00	\$ 104,489.00	10/1/2019		GRAY, HONG, NOJIMA & ASSOCIATES, INC.	RESIDENTIAL DEVELOPMENT AT THE FORMER VOICE OF AMERICA SITE	Contingent upon Contract Administrator	N	S
HHL625	A	9,650.00	O	30,000.00	\$ 20,350.00	10/1/2019		KESAJI, THEODORE R. DBA VALLEY ISLE APPRAISAL	APPRAISAL SERVICES FOR RESIDENTIAL PROPERTIES SURRENDERED BACK TO DHHL	Contingent upon Contract Administrator	N	S
HHL602	T	0.00	O	300,000.00	\$ 300,000.00	NTP		ELEMENT ENVIRONMENTAL, LLC	SOILS INVESTIGATION AND REMEDIATION SERVICES FOR VARIOUS PROJECTS ON KAUAI AND HAWAII ISLAND	Contingent upon Contract Administrator	N	S
HHL602	T	141,399.00	O	1,359,000.00	\$ 1,217,601.00	NTP		R.M. TOWILL CORPORATION	PAPAKOLEA SUBDIVISION SEWER IMPROVEMENTS	Contingent upon Contract Administrator	N	S
HHL625	A	705.00	O	5,000.00	\$ 4,295.00	11/1/2019		ISHIDA, WENDEL M.	APPRAISAL SERVICES FOR RESIDENTIAL PROPERTIES SURRENDERED BACK TO DHHL LOCATED ON THE ISLAND OF KAUAI	Contingent upon Contract Administrator	N	S

Department of xxx
Active Contracts as of December 1, 2020

Table 14

HHL602	N	226,828.80		231,897.60	\$ 5,068.80	NTP			ALII SECURITY SYSTEMS, INC.	SECURITY GUARD SVCS F/DHHL PROPERTY AT 820 ISENBERG ST	Contingent upon Contract Administrator	N	S
HHL602	T	54,411.25	O	833,000.00	\$ 778,588.75	NTP			CLOSE CONSTRUCTION, INCORPORATED	WAIANAE VALLEY INCREMENT 4 SUBDIVISION SITE IMPROVEMENTS	Contingent upon Contract Administrator	N	S
HHL602	T	0.00	O	442,178.00	\$ 442,178.00	NTP			CLOSE CONSTRUCTION, INCORPORATED	WAIANAE VALLEY INCREMENT 4 SUBDIVISION SITE IMPROVEMENTS	Contingent upon Contract Administrator	N	S
HHL602	T	0.00	O	21,589.00	\$ 21,589.00	NTP			CLOSE CONSTRUCTION, INCORPORATED	WAIANAE VALLEY INCREMENT 4 SUBDIVISION SITE IMPROVEMENTS	Contingent upon Contract Administrator	N	S
HHL602	A	80,000.00	O	150,000.00	\$ 70,000.00	10/29/2019			WAIHOLI HAWAIIAN HOMESTEAD ASSOCIATION	GRANT-IN-AID: WAIHOLI COMMUNITY CENTER AND PARK FACILITY	Contingent upon Contract Administrator	N	S
HHL602	T	7,853.40	O	55,000.00	\$ 47,146.60	11/20/2019			COLLIERS INTERNATIONAL HI HOLDINGS, LLC DBA COLLIERS INTERNATIONAL HI, LLC	CONSULTANT FOR MARKET & DEMAND STUDIES AND DEVELOPMENT FEASIBILITY STUDIES FOR FOUR HHL DEVELOPMENT SITES	Contingent upon Contract Administrator	N	S
HHL602	T	23,942.40	O	1,000,000.00	\$ 976,057.60	12/1/2019			ENVIROSERVICES & TRAINING CENTER, LLC	ENVIRONMENTAL ENGINEERING FOR POTENTIAL LAND ACQUISITION	Contingent upon Contract Administrator	N	S
HHL602	T	221,312.30	O	268,680.00	\$ 47,367.70	NTP			GROUP 70 INTERNATIONAL, INC. DBA G70	KAU WATER SYSTEM PROJECT, PHASE 1 DESIGN	Contingent upon Contract Administrator	N	S
HHL602	T	0.00		30,000.00	\$ 30,000.00	NTP			GROUP 70 INTERNATIONAL, INC. DBA G70	KAU WATER SYSTEM PROJECT, PHASE 1 DESIGN	Contingent upon Contract Administrator	N	S
HHL602	T	0.00	O	170,000.00	\$ 170,000.00	1/1/2020			JONATHAN LIKEKE SCHEUER, PH.D.	WATER POLICY PLAN IMPLEMENTATION	Contingent upon Contract Administrator	N	S
HHL625	A	17,640.00	O	30,000.00	\$ 12,360.00	12/1/2019			OHANASOFT LLC	MAINTENANCE/SUPPORT ORACLE FINANCIALS	Contingent upon Contract Administrator	N	S
HHL602	T	745,312.72	O	1,500,000.00	\$ 754,687.28	NTP			DDC, LLC	RFP-19-HHL-004: PU'UNANI HOMESTEAD; LAND ACQUISITION, ISLAND OF MAUI	Contingent upon Contract Administrator	N	S
HHL602	T	0.00	O	452,910.50	\$ 452,910.50	NTP			ISLAND CONSTRUCTION & DEMOLITION, LLC	IFB-20-HHL-010: KANEHILI PEDESTRICAN ACCESS	Contingent upon Contract Administrator	N	S
HHL625	A	160,000.00	O	295,000.00	\$ 135,000.00	NTP			GREGORY L. MANN DBA GORHAM/GOLD/GREENWICH ASSOCIATES LLC	PROFFESIONAL SERVICES CONTRACT ECONOMIST TO ASSISTANCE WITH TELECOMMUNICATIONS TRANSITION, ECONOMIC IMPACT & REGULATORY COMPLIANCE	Contingent upon Contract Administrator	N	S
HHL602	C	0.00	O	550,000.00	\$ 550,000.00	NTP			R. M. TOWILL CORPORATION	NAIWA SUBDIVISION SITE IMPROVEMENTS	Contingent upon Contract Administrator	N	S
HHL602	T	40,879.66	O	150,000.00	\$ 109,120.34	NTP			NORESCO, LLC	RENEWABLE ENERGY CONSULTANT ON ENERGY & ENERGY RELATED MATTERS FOR DHHL	Contingent upon Contract Administrator	N	S
LBR903	C	70,000.00	O	100,000.00	\$ 30,000.00	2/21/2020			AHUPUA'A O MOLOKAI	AHUPUA'A O MOLOKAI	Contingent upon Contract Administrator	N	S
HHL602	T	0.00	O	6,692,786.00	\$ 6,692,786.00	NTP			KIEWIT INFRASTRUCTURE WEST CO.	ANAHOLA FARM LOTS WATER SYSTEM TANK REPLACEMENT & INFRASTRUCTURE IMPROVEMENTS	Contingent upon Contract Administrator	N	S
HHL602	C	684,036.89	O	702,994.00	\$ 18,957.11	NTP			ROJAC CONSTRUCTION, INC.	KEOKEA-WAIHOLI DRAINAGE IMPROVEMENTS; IFB-20-HHL-004	Contingent upon Contract Administrator	N	S
HHL602	C	31,706.17	O	55,290.62	\$ 23,584.45	NTP			ROJAC CONSTRUCTION, INC.	KEOKEA-WAIHOLI DRAINAGE IMPROVEMENTS; IFB-20-HHL-004	Contingent upon Contract Administrator	N	S
HHL602	C	0.00	O	2,000,000.00	\$ 2,000,000.00	NTP			COMMUNITY PLANNING AND ENGINEERING, INC.	ENGINEERING SERVICES FOR AGRICULTURAL OFF-SITE WATER SYSTEM, KEOKEA, MAUI	Contingent upon Contract Administrator	N	S
HHL602	T	330,493.50	O	560,000.00	\$ 229,506.50	NTP			BOWERS + KUBOTA CONSULTING INC.	LAND ACQUISITION DUE DILIGENCE ASSESSMENTS	Contingent upon Contract Administrator	N	S
HHL602	T	16,999.47	O	150,000.00	\$ 133,000.53	5/1/2020			SULLIVAN MEHEULA LEE LLLP	LEGAL COUNSEL ON DHHL WATER ISSUES: LOCATION: WAIMEA, KAUAI & PULEHUNUI, Maui	Contingent upon Contract Administrator	N	S
HHL602	T	0.00	O	3,048,540.00	\$ 3,048,540.00	NTP			GOODFELLOW BROS., LLC	IFB-18-HHL-009: HOOLEHUA WATER SYSTEM IMPROVEMENTS- PACKAGE 2	Contingent upon Contract Administrator	N	S
HHL602	N	2,000,000.00	O	7,000,000.00	\$ 5,000,000.00	4/29/2020			ALOHA UNITED WAY, INC.	DHHL COVID-19 EMERGENCY RENTAL ASSISTANCE PROGRAM (DRAP)	Contingent upon Contract Administrator	N	S
HHL602	C	0.00	O	500,000.00	\$ 500,000.00	NTP			GOODFELLOW BROS., ILLC	IFB-18-HHL-008: HOOLEHUA Water system Improvments - Package 1	Contingent upon Contract Administrator	N	S
HHL602	T	0.00	O	19,054,000.00	\$ 19,054,000.00	NTP			GOODFELLOW BROS., LLC	IFB-18-HHL-008: HOOLEHUA Water system Improvments - Package 1	Contingent upon Contract Administrator	N	S

Department of xxx
Active Contracts as of December 1, 2020

Table 14

HHL602	B	4,581.15	O	50,000.00	\$ 45,418.85	NTP		PBR HAWAII & ASSOCIATES, INC.	GIS SERVICES	Contingent upon Contract Administrator	N	S
HHL625	A	112,492.89	O	149,990.52	\$ 37,497.63	NTP		SMS RESEARCH AND MARKETING	BENEFICIARY SURVEY 2020 - STATEWIDE	Contingent upon Contract Administrator	N	S
HHL625	A	4,572.91	O	200,000.00	\$ 195,427.09	5/1/2020		PBR HAWAII & ASSOCIATES, INC.	KEOKEA MASTER PLAN & ENVIRONMENTAL ASSESSMENT	Contingent upon Contract Administrator	N	S
HHL625	A	27,755.39	O	249,963.70	\$ 222,208.31	NTP		SSFM INTERNATIONAL, INC.	GENERAL PLAN UPDATE	Contingent upon Contract Administrator	N	S
HHL602	B	0.00		75,000.00	\$ 75,000.00	NTP		SSFM INTERNATIONAL, INC.	GENERAL PLAN UPDATE	Contingent upon Contract Administrator	N	S
HHL602	C	780,122.76	O	935,317.98	\$ 155,195.22	NTP		GOODFELLOW BROS., LLC	IFB-20-HHL-015: KAHIKINUI DRIVEWAY REPAIRS, PHASE 1	Contingent upon Contract Administrator	N	S
HHL602	T	0.00	O	28,518.51	\$ 28,518.51	NTP		GOODFELLOW BROS., LLC	IFB-20-HHL-015: KAHIKINUI DRIVEWAY REPAIRS, PHASE 1	Contingent upon Contract Administrator	N	S
HHL602	C	0.00	O	119,735.02	\$ 119,735.02	NTP		TOM'S BACKHOE & EXCAVATION CO., INC.	IFB-20-HHL-012: VARIOUS LOT IMPROVEMENTS IN WAIIEHU KOU & PAUKUKALO SUBDIVISIONS	Contingent upon Contract Administrator	N	S
HHL602	C	0.00	O	600,000.00	\$ 600,000.00	NTP		TOM'S BACKHOE & EXCAVATION CO., INC.	IFB-20-HHL-012: VARIOUS LOT IMPROVEMENTS IN WAIIEHU KOU & PAUKUKALO SUBDIVISIONS	Contingent upon Contract Administrator	N	S
HHL602	B	16,500.00	O	50,000.00	\$ 33,500.00	7/1/2020		TOWNSCAPE, INC.	DHHL KAPOLEI REGIONAL PLAN UPDATE	Contingent upon Contract Administrator	N	S
HHL602	C	0.00	O	3,840,491.00	\$ 3,840,491.00	NTP		DIEDE CONSTRUCTION, INC.	HOOLEHUA VETERAN & HOMESTEAD RESIDENT'S CENTER - RFP-20-HHL-004	Contingent upon Contract Administrator	N	S
HHL602	C	0.00	O	150,000.00	\$ 150,000.00	NTP		DIEDE CONSTRUCTION, INC.	HOOLEHUA VETERAN & HOMESTEAD RESIDENT'S CENTER - RFP-20-HHL-004	Contingent upon Contract Administrator	N	S
HHL602	T	50,000.00	O	100,000.00	\$ 50,000.00	6/30/2020		AHUPUA'A O MOLOKAI	ALTERNATIVE ENERGY FOR AOM & KALAMAULA HOMESTEADERS ASSOCIATION: MOLOKAI REGIONAL PLAN PRIORITY PROJECT	Contingent upon Contract Administrator	N	S
HHL602	T	50,000.00	O	100,000.00	\$ 50,000.00	6/30/2020		KAILAPA COMMUNITY ASSOCIATION	PLAN & DESIGN THE RESOURCE CENTER - KAWAIHAE REGIONAL PLAN PRIORITY PROJECTS GRANT	Contingent upon Contract Administrator	N	S
HHL602	T	75,000.00	O	100,000.00	\$ 25,000.00	6/30/2020		KALAMAULA HOMESTEADERS ASSOCIATION	DHHL REGIONAL PLAN PRIORITY PROJECT GRANT 2019 - KIOWEA PARK IMPROVEMENT	Contingent upon Contract Administrator	N	S
HHL602	T	50,000.00	O	100,000.00	\$ 50,000.00	6/30/2020		PRINCESS KAHANU ESTATES ASSOCIATION	PONO ECONOMIC DEVELOPMENT - DHHL REGIONAL PLAN PRIORITY PROJECTS GRANT	Contingent upon Contract Administrator	N	S
HHL602	T	13,500.00	O	15,000.00	\$ 1,500.00	6/30/2020		AHUPUA'A O MOLOKAI	CAPACITY BUILDING FOR AOM, HOOLEHUA HOMESTEAD ASSOCIATION, MAKAKUOHA COOPERATIVE	Contingent upon Contract Administrator	N	S
HHL602	T	0.00	O	5,000.00	\$ 5,000.00	6/30/2020		MOLOKAI HOMESTEAD FARMERS ALLIANCE	NONPROFIT ORGANIZATION CAPACITY BUILDING	Contingent upon Contract Administrator	N	S
HHL602	T	0.00	O	5,000.00	\$ 5,000.00	6/30/2020		MOLOKAI HOMESTEAD FARMERS ALLIANCE	MOLOKAI HAWAIIAN HOME LANDS KUPUNA COMMUNITY GROUP CAPACITY BUILDING	Contingent upon Contract Administrator	N	S
HHL602	T	4,500.00	O	5,000.00	\$ 500.00	6/30/2020		WEST HAWAII PARKS AND ATHLETIC CORPORATION	LAIOPUA COMMUNITY DEVELOPMENT CORPORATION CAPACITY BUILDING	Contingent upon Contract Administrator	N	S
HHL602	T	4,500.00	O	5,000.00	\$ 500.00	6/30/2020		AHONUI HOMESTEAD ASSOCIATION	NON-PROFIT ORGANIZATION CAPACITY BUILDING	Contingent upon Contract Administrator	N	S
HHL602	T	4,500.00	O	5,000.00	\$ 500.00	6/30/2020		KALAMAULA HOMESTEADERS ASSOCIATION	NON-PROFIT ORGANIZATION CAPACITY BUILDING	Contingent upon Contract Administrator	N	S
HHL602	T	4,500.00	O	5,000.00	\$ 500.00	6/30/2020		PRINCESS KAHANU ESTATES	AHA KUKA CAPACITY BLDG	Contingent upon Contract Administrator	N	S
HHL602	T	9,000.00	O	10,000.00	\$ 1,000.00	6/30/2020		NAPUALEI O HINA	NAPUALEI & HOPIILI FARMERS CAPACITY BUILDING	Contingent upon Contract Administrator	N	S
HHL602	C	0.00	O	12,711,045.00	\$ 12,711,045.00	NTP		ALPHA, INC.	PULEHUNUI WAST WATER SYSTEM; IFB-20-HHL-022	Contingent upon Contract Administrator	N	S
HHL602	T	0.00	O	50,000.00	\$ 50,000.00	7/1/2020		ALLEN K. HOE	HEARINGS OFFICER FOR HHC CONTESTED CASE HEARINGS	Contingent upon Contract Administrator	N	S
HHL602	T	9,050.00	O	164,300.00	\$ 155,250.00	NTP		PURAL WATER SPECIALTY CO.,	PUUKAPU NON-POTABLE WATER SYSTEM OPERATIONS & MAINTENANCE SERVICES	Contingent upon Contract Administrator	N	S
HHL602	T	8,380.00	O	95,405.00	\$ 87,025.00	NTP		PURAL WATER SPECIALTY CO.,	KAWAIHAE WATER SYSTEM OPERATION & MAINTENANCE SERVICES	Contingent upon Contract Administrator	N	S

Department of xxx
Active Contracts as of December 1, 2020

Table 14

HHL602	C	2,237.68	O	1,288,955.00	\$ 1,286,717.32	NTP		SSFM INTERNATIONAL, INC.	CONSTRUCTION MANAGEMENT SERVICES FOR PULEHUNUI WASTEWATER SYSTEM	Contingent upon Contract Administrator	N	S
HHL602	T	0.00	O	200,000.00	\$ 200,000.00	NTP		SSFM INTERNATIONAL, INC.	CONSTRUCTION MANAGEMENT SERVICES FOR HAWAII ISLAND	Contingent upon Contract Administrator	N	S
HHL602	T	0.00	O	100,000.00	\$ 100,000.00	NTP		SSFM INTERNATIONAL, INC.	CONSTRUCTION MANAGEMENT SERVICES FOR HAWAII ISLAND	Contingent upon Contract Administrator	N	S
HHL602	T	139,554.43	O	163,000.00	\$ 23,445.57	NTP		SEA ENGINEERING, INC.	IFB-20-HHL-021: NANAKULI FLOOD CONTROL CHANNEL IMPROVEMENTS	Contingent upon Contract Administrator	N	S
HHL602	T	598,025.04	O	1,332,000.00	\$ 733,974.96	NTP		SEA ENGINEERING, INC.	IFB-20-HHL-021: NANAKULI FLOOD CONTROL CHANNEL IMPROVEMENTS	Contingent upon Contract Administrator	N	S
HHL602	C	0.00	O	1,910,100.00	\$ 1,910,100.00	NTP		SEA ENGINEERING, INC.	IFB-20-HHL-021: NANAKULI FLOOD CONTROL CHANNEL IMPROVEMENTS	Contingent upon Contract Administrator	N	S
HHL602	C	0.00	O	3,500,000.00	\$ 3,500,000.00	NTP		AUSTIN, TSUTSUMI & ASSOCIATES, INC.	ENGINEERING & POST-DESIGN SERVICES FOR PULEHUNUI IMPROVEMENTS	Contingent upon Contract Administrator	N	S
HHL602	T	12,500.00	O	13,832.00	\$ 1,332.00	6/30/2020		HOMESTEAD COMMUNITY DEVELOPMENT CORPORATION	HOOLEHUA HOMESTEAD AGRICULTURAL ASSOCIATION MICRO FOOD SYSTEM	Contingent upon Contract Administrator	N	S
HHL602	T	0.00	O	400,000.00	\$ 400,000.00	6/22/2020		OHANASOFT LLC	ACCOUNTING - WATER UTILITY FINANCIAL MANAGEMENT	Contingent upon Contract Administrator	N	S
HHL602	N	56,418.71	O	750,000.00	\$ 693,581.29	6/15/2020		PBR HAWAII & ASSOCIATES, INC.	PREPARATION OF HOUSING & URBAN DEVELOPMENT NHHBG ENVIRONMENTAL REVIEW RECORDS	Contingent upon Contract Administrator	N	S
HHL602	T	0.00	O	100,000.00	\$ 100,000.00	7/1/2020		HELEN N. WAI, LLC	HEALTH CARE AND HOUSEHOLD FINANCIAL PLANNING	Contingent upon Contract Administrator	N	S
HHL602	T	0.00	O	100,000.00	\$ 100,000.00	7/1/2020		NANAKULI HOUSING CORPORATION	HOME BUYER & POST HOMEOWNERSHIP EDUCATION	Contingent upon Contract Administrator	N	S
HHL602	T	0.00	O	100,000.00	\$ 100,000.00	NTP		HAWAII ALLIANCE OF NONPROFIT ORGANIZATIONS	EDUCATION & TRAINING (PLANNED COMMUNITY ASSOCIATION)	Contingent upon Contract Administrator	N	S
HHL602	T	4,500.00	O	5,000.00	\$ 500.00	NTP		KAILAPA COMMUNITY ASSOCIATION	CAPACITY BUILDING	Contingent upon Contract Administrator	N	S
HHL602	T	4,500.00	O	5,000.00	\$ 500.00	NTP		PRINCESS KAHANU ESTATES ASSOCIATION	CAPACITY BUILDING	Contingent upon Contract Administrator	N	S
HHL602	T	71,842.46		98,000.00	\$ 26,157.54	NTP		BOWERS + KUBOTA CONSULTING INC	CONSTRUCTION MGMT SVCS F/ANAHOLA RESERVOIR IMPROVEMENT PROJ- KAUAI, HI	Contingent upon Contract Administrator	N	S
HHL602	B	0.00		25,000.00	\$ 25,000.00	NTP		AUSTIN, TSUTSUMI & ASSOC., INC.	LAND SURVEYING SVCS - STATEWIDE	Contingent upon Contract Administrator	N	S
HHL602	T	1,683.13	O	92,000.00	\$ 90,316.87	9/15/2020		PACIFIC ELECTRO MECHANICAL, INC.	IFB-21-HHL-001: DHHL MOLOKAI WATER SYSTEM SPECIALIZED REPAIR WORK	Contingent upon Contract Administrator	N	S
HHL602	C	0.00	O	197,006.00	\$ 197,006.00	NTP		MIRA IMAGE CONSTRUCTION LLC	KEOKEA-WAIOHULI SUBDIVISION, PHASE 2A	Contingent upon Contract Administrator	N	S
HHL602	C	0.00	O	5,000,000.00	\$ 5,000,000.00	NTP		MIRA IMAGE CONSTRUCTION LLC	KEOKEA-WAIOHULI SUBDIVISION, PHASE 2A	Contingent upon Contract Administrator	N	S
HHL602	C	0.00	O	844,709.38	\$ 844,709.38	NTP		MIRA IMAGE CONSTRUCTION LLC	KEOKEA-WAIOHULI SUBDIVISION, PHASE 2A	Contingent upon Contract Administrator	N	S
HHL602	C	0.00	O	2,667,850.27	\$ 2,667,850.27	NTP		MIRA IMAGE CONSTRUCTION LLC	KEOKEA-WAIOHULI SUBDIVISION, PHASE 2A	Contingent upon Contract Administrator	N	S
HHL602	T	0.00	O	400,000.00	\$ 400,000.00	NTP		GROUP 70 INTERNATIONAL, INC. DBA G70	PROFESSIONAL ENGINEERING SERVICES FOR VARIOUS REMEDIATION PROJECTS	Contingent upon Contract Administrator	N	S
HHL602	T	0.00	O	1,128,704.00	\$ 1,128,704.00	NTP		FUKUNAGA & ASSOCIATES, INC.	WEST OAHU SEWER SYSTEM IMPROVEMENTS	Contingent upon Contract Administrator	N	S
HHL602	N	0.00		250,000.00	\$ 250,000.00	NTP		WAI, HELEN N., LLC	HOUSING COUNSELING - DHHL-PS-FY21-001	Contingent upon Contract Administrator	N	S
HHL602	T	0.00		49,000.00	\$ 49,000.00	NTP		ENGINEERS SURVEYORS HAWAII,	LAIOPUA VILLAGE 4, PHASE I - AKAU POST CONSTRUCTION SVCS	Contingent upon Contract Administrator	N	S
HHL602	T	0.00		800,000.00	\$ 800,000.00	NTP		HAWAII ENGINEERING GROUP, INC.	PROFESSIONAL ENGINEERING SVCS F/INFRASTRUCTURE ASSESSMENTS & IMPROVEMENT	Contingent upon Contract Administrator	N	S

Department of xxx
Active Contracts as of December 1, 2020

Table 14

HHL602	T	0.00	800,000.00	\$ 800,000.00	NTP			SSFM INTERNATIONAL, INC.	CONSTRUCTION MGMT SVCS FOR LAIOPUA VILLAGE 4 SUBDIVISION-PHASE 2 -HEMA	Contingent upon Contract Administrator	N	S
--------	---	------	------------	---------------	-----	--	--	--------------------------	--	--	---	---

Department of Hawaiian Home Lands
Capital Improvements Program (CIP) Requests

Table 15

<u>Prog ID</u>	<u>Prog ID</u> <u>Priority</u>	<u>Dept- Wide</u> <u>Priority</u>	<u>Senate</u> <u>District</u>	<u>Rep.</u> <u>District</u>	<u>Project Title</u>	<u>MOF</u>	<u>FY22 \$\$\$</u>	<u>FY23 \$\$\$</u>
HHL 602	1	1	0	0	Infrastructure for Hawaiian Home Lands Lot Development Statewide	C	\$ 20,000,000	\$ 20,000,000
HHL 602	1	1	0	0	Repair and Maintenance of Infrastructure on Hawaiian Home Lands, Statewide	C	\$ 5,000,000	\$ 5,000,000

Department of Hawaiian Home Lands
CIP Lapses

Table 16

<u>Prog ID</u>	<u>Act/Year of Appropriation</u>	<u>Project Title</u>	<u>MOF</u>	<u>Lapse Amount</u> \$\$\$\$	<u>Reason</u>
		None			

Department of Hawaiian Home Lands
Program ID Sub-Organizations

Table 17

<u>Program ID</u>	<u>Sub-Org Code</u>	<u>Name</u>	<u>Objective</u>
HHL625AO	3100000000	HHL	https://dhhl.hawaii.gov/dhhl/dhhl-organizational-chart/
HHL625AO	3101000000	OfcOfChairmn	
HHL625AO	3102000000	PlanningOfc	
HHL625AO	3103000000	AdminSvcsOfc	
HHL625AO	3103010000	Pers Stf	
HHL625AO	3103020000	Budget&PgmEvalStf	
HHL625AO	3103030000	Info&COmmSysStf	
HHL625AO	3103040000	ContractSvcsStf	
HHL625AO	3103050000	ClericalSvcsStf	
HHL625AO	3104000000	FiscalOfc	
HHL625AO	3104010000	AccountingStf	
HHL625AO	3104020000	FiscalSvcsStf	
HHL625AO	3104030000	Sys&InternalCntlStf	
HHL625AO	3104500000	HmstdSvcsDiv	
HHL625AO	3105010000	HomsteadApplBr	
HHL625AO	3105020000	ClericalSvcsStf	
HHL625AO	3105030000	DistrictOperationsBr	
HHL625AO	3105030100	EastHawaiiDistOfc	
HHL625AO	3105030200	MauiDistrictOffice	
HHL625AO	3105030300	MolokaiDistrictOfc	
HHL625AO	3105030400	OahuDistrictOfc	
HHL625AO	3105030500	KauaiDistrictOfc	
HHL625AO	3105030600	WestHawaiiDistOfc	
HHL625AO	3105040000	LoanSvcsBranch	
HHL625AO	3106000000	LandDevDiv	
HHL625AO	3106010000	HousingProjBr	
HHL625AO	3106020000	Master-PlanCommntyBr	
HHL625AO	3106030000	Design&ContractnBr	
HHL625AO	3106050000	ClericalSvcsStf	
HHL625AO	3107000000	Info&CommRel	
HHL625AO	3109000000	LandMgtDiv	
HHL625AO	3109010000	IncomePropertyBr	
HHL625AO	3109020000	TechnicalSvcsBr	
HHL625AO	3109030000	LandManagemtnBr	
HHL625AO	3109030100	HawaiiSection	
HHL625AO	3109030200	Oahu-Kauai-Maui Sec	
HHL625AO	3109030300	EnforcementSection	
HHL625AO	3109040000	ClericalSvcs	

Department of Hawaiian Home Lands
Organization Changes

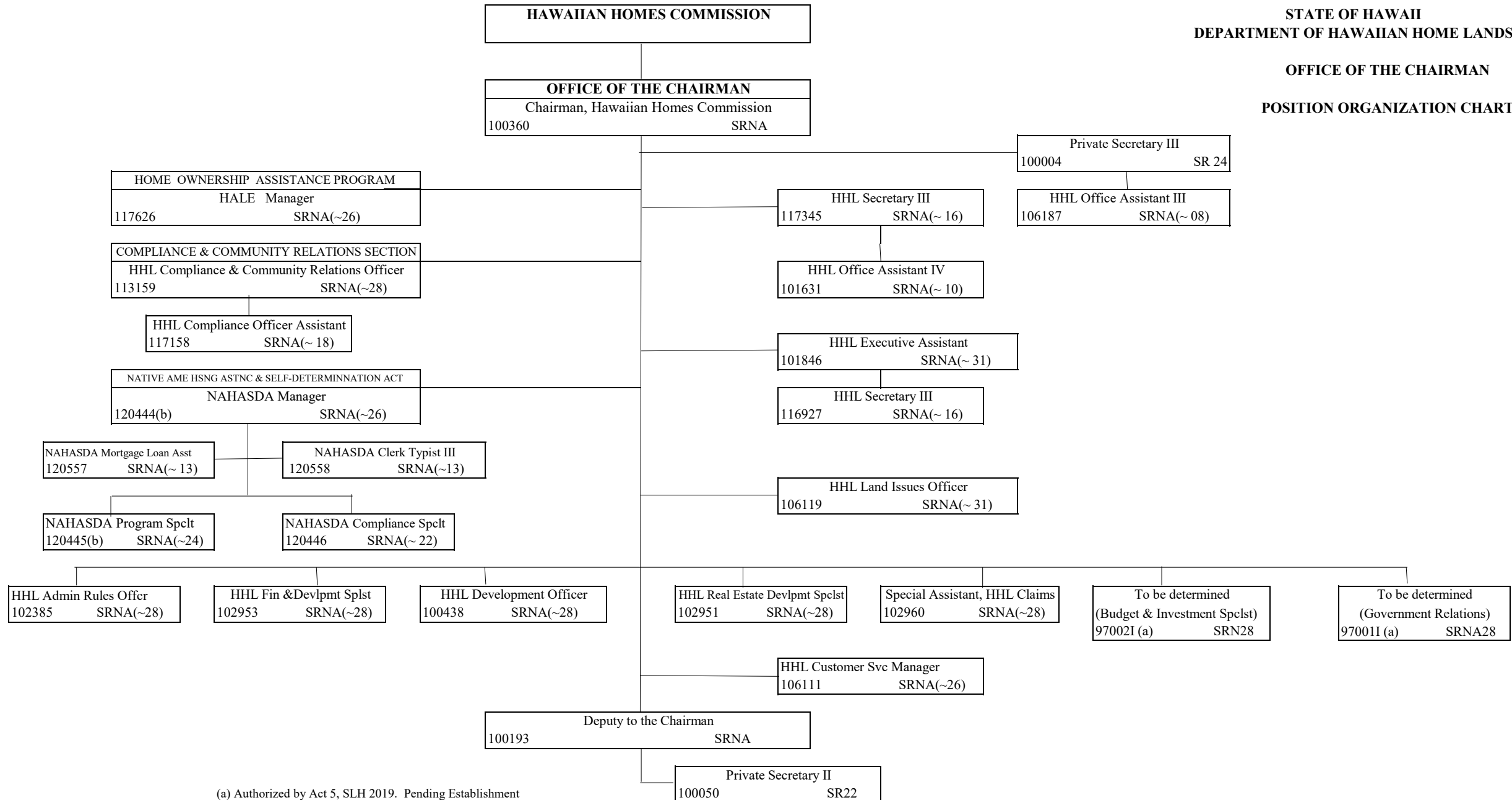
Table 18

<u>Year of Change</u> <u>FY22/FY23</u>	<u>Description of Change</u>
	The Land Development Division (LDD) proposes a reorganization by creating efficiencies and accountability through an organizational structure that maps clear delineation of responsibilities based on expertise. The Master Planned Community Branch will rename and repurpose from the Master Planned Community Branch to the Master Planned & Other Services Branch that would create two sections, Administrative Support and Special Projects to allow for greater diversification, manage the administrative aspects of projects and manage special development projects. The Housing Project Branch functions will transfer to another division and be replaced with the Repair and Maintenance and Lessee Support Services Branch creating a single point of contact, consolidated responsibility, and increased accountability for repairs and maintenance of all DHHL facilities Statewide, including the handling of beneficiary complaints and concerns related to maintenance. Minor changes to the Design and Construction Branch identifying responsibilities defined by phases of projects, thus aligning LDD's functions more efficiently.

STATE OF HAWAII
DEPARTMENT OF HAWAIIAN HOME LANDS

OFFICE OF THE CHAIRMAN

POSITION ORGANIZATION CHART



(a) Authorized by Act 5, SLH 2019. Pending Establishment
(b) PN 120444, 120445 temporary position, not-to-exceed 06/30/21

As of 6/30/2020