



STATE OF HAWAII
DEPARTMENT OF EDUCATION
P.O. BOX 2360
HONOLULU, HAWAII 96804

Date: 03/19/2021

Time: 03:00 PM

Location: CR 229 & Videoconference

Committee: Senate Education
Senate Agriculture and Environment

Department: Education

Person Testifying: Dr. Christina M. Kishimoto, Superintendent of Education

Title of Bill: HB 0767, HD2 RELATING TO THE FARM TO SCHOOL PROGRAM.

Purpose of Bill: Moves the Hawaii farm to school program from the department of agriculture to the department of education. Establishes a programmatic goal for the department of education that at least thirty percent of food served in public schools shall consist of locally sourced products by 2030. Creates an annual reporting requirement. Effective 7/1/2051. (HD2)

Department's Position:

The Hawaii State Department of Education (Department) supports the intent of HB 767, HD2 to move the Hawaii farm to school program (F2S) from the Hawaii State Department of Agriculture to the Department and to establish a programmatic goal for the Department that at least thirty percent of food served in public schools shall consist of locally sourced products by 2030.

In order to achieve the goal by 2030, the Department will need to determine the progress of F2S while housed at Department of Agriculture. This is a necessary step to determine a baseline of how much of food is currently locally sourced in order to begin monitoring any movement to fulfill the goal of thirty percent. Additionally, the Department would like to acknowledge the unfunded mandate for a coordinator position for F2S within the Department in the measure's current draft. The Department respectfully requests dedicated resources and funding for staff to manage the relationships and targets as described in this measure.

The Department's Office of Facilities and Operations School Food Services Branch fully recognizes the impact of purchasing local agriculture products and what it means to the economic vitality of the state and the goal of a sustainable farm community. Thus, the Department will continue to improve and evaluate its business processes and practices to

achieve a greater utilization of Hawaii-produced agriculture products.

Thank you for the opportunity to testify on this measure.

The Hawai'i State Department of Education is committed to delivering on our promises to students, providing an equitable, excellent, and innovative learning environment in every school to engage and elevate our communities. This is achieved through targeted work around three impact strategies: school design, student voice, and teacher collaboration. Detailed information is available at www.hawaiipublicschools.org.

DAVID Y. IGE
Governor

JOSH GREEN
Lt. Governor



PHYLLIS SHIMABUKURO-GEISER
Chairperson, Board of Agriculture

MORRIS M. ATTA
Deputy to the Chairperson

State of Hawaii
DEPARTMENT OF AGRICULTURE
1428 South King Street
Honolulu, Hawaii 96814-2512
Phone: (808) 973-9600 FAX: (808) 973-9613

**TESTIMONY OF PHYLLIS SHIMABUKURO-GEISER
CHAIRPERSON, BOARD OF AGRICULTURE**

**BEFORE THE SENATE COMMITTEES ON EDUCATION
AND
AGRICULTURE AND ENVIRONMENT**

**MARCH 19, 2021
3:00 P.M.
VIA VIDEO CONFERENCE**

**HOUSE BILL NO. 767 HD2
RELATING TO THE FARM TO SCHOOL PROGRAM**

Chairpersons Kidani, Gabbard, and Members of the Committees:

Thank you for the opportunity to testify on House Bill 767 HD2, relating to the farm to school program. This bill moves the Hawaii farm to school program from the department of agriculture to the department of education (DOE), and establishes a programmatic goal for the department of education that at least thirty per cent of food served in public schools shall consist of locally sourced products by 2030. The Department offers comments on this measure.

The Department strongly supports the Farm to School Program and is a committed partner in the effort to bring local agricultural products to menus at our public schools and in all State institutional food service programs through the farm to state program. The Department is committed to connecting farmers to the DOE and other state institutions, providing commodity information, and supporting local producers in obtaining and maintaining the food safety certifications required to provide food to our schools. The Department supports the proposed statutory change in this measure because the Farm to School Coordinator position has existed at the DOE since 2018.



Furthermore, the Department of Agriculture defers to the Department of Education on the feasibility of the goal of sourcing 30% of food served in public schools locally by 2030.

Thank you for the opportunity to testify on this measure.



Email: communications@ulupono.com

SENATE COMMITTEES ON EDUCATION AND AGRICULTURE & ENVIRONMENT
Friday, March 19, 2021 — 3:00 p.m.

Ulupono Initiative supports HB 767 HD 2, Relating to the Farm to School Program

Dear Chair Kidani, Chair Gabbard, and Members of the Committees:

My name is Micah Munekata, and I am the Director of Government Affairs at Ulupono Initiative. We are a Hawai'i-focused impact investment firm that strives to improve quality of life throughout the islands by helping our communities become more resilient and self-sufficient through locally produced food; renewable energy and clean transportation; and better management of freshwater and waste.

Ulupono supports HB 767 HD 2, which moves the Hawai'i Farm to School Program from the Department of Agriculture to the Department of Education; establishes a programmatic goal for the Department of Education that at least 30% of food served in public schools shall consist of locally sourced products by 2030; and creates annual reporting.

Ulupono supports the State's Farm to School efforts to implement local food into statewide meal programs and recognizes that there is a need to clarify programmatic responsibility within the Department of Education (DOE). While the Department of Agriculture (DOA) has housed the Farm to School Program since 2015, the dedicated coordinator position no longer exists in the DOA; rather, a farm to school coordinator now exists within the DOE. Placing the Farm to School Program within the DOE aligns the dedicated personnel with a formal program.

Ulupono would like to offer a few amendments for consideration that strengthen the overall farm to school meal goal. We recommend amending page 3, lines 5-8 to read as follows:

“(a) ~~To the extent practicable, the~~ The department shall meet the local farm to school meal goal that thirty per cent of food served in public schools consist of locally sourced products by 2030, as measured by the per cent of the total cost of food.”

Pilot projects in Kohala, Mililani and on the island of Kaua'i have been successful at modeling how local food procurement can be expanded when there is buy-in across

Investing in a Sustainable Hawai'i



various state and local entities, community companies and organizations, and the overall community as a whole. By creating a goal-oriented approach to local food adoption in school meals, the State is making a statement to prioritize fresh, nutritious local food for students, support local farmers and ranchers, and achieve Hawai'i's local food production goals.

Thank you for this opportunity to testify.

Respectfully,

Micah Munekata
Director of Government Affairs



P.O. Box 253, Kunia, Hawai'i 96759
Phone: (808) 848-2074; Fax: (808) 848-1921
e-mail info@hfbf.org; www.hfbf.org

March 19, 2021

HEARING BEFORE THE
SENATE COMMITTEE ON EDUCATION
SENATE COMMITTEE ON AGRICULTURE AND ENVIRONMENT

TESTIMONY ON HB 767, HD2
RELATING TO FARM TO SCHOOL PROGRAM

Conference Room 229
3:00 PM

Aloha Chairs Kidani and Gabbard, Vice-Chairs Kim and Nishihara, and Members of the Committees:

I am Brian Miyamoto, Executive Director of the Hawaii Farm Bureau (HFB). Organized since 1948, the HFB is comprised of 1,800 farm family members statewide and serves as Hawaii's voice of agriculture to protect, advocate and advance the social, economic, and educational interests of our diverse agricultural community.

The Hawaii Farm Bureau supports HB 767, HD2, which moves the Hawaii farm to school program from the department of agriculture to the department of education, establishes a programmatic goal for the department of education that at least thirty percent of the food served in public schools shall consist of locally sourced products by 2030, and creates an annual reporting requirement.

HFB strongly supports the increased use of locally grown agricultural products, fruits, vegetables, meats, dairy, and poultry products in our schools.

Many formal and informal studies have been done addressing farm to school program. Our farmers and ranchers have tried to work with the procurement system and can speak to the shortcomings of the system. For example, supplying a school or schools within a geographic area is feasible. Providing to the entire school system is not. The focus should now be on working with the procurement system to make institutional markets accessible while considering the capacity of farmers and ranchers in Hawaii. Assistance to farmers on how to navigate the system should also be a priority. Many farmers and ranchers are ready to understand the opportunity and identify crops and other products that can be grown and produced or these markets.

HFB supports moving the Farm to School Program to the Hawaii Department of Education. HFB believes that learning where food comes from is an important part of our

children's education. Agriculture education involves more than just learning the basics of food production, it provides the opportunity for our children to understand and appreciate the importance of agriculture.

HFB supports programs and initiatives such as Farm to School because they help to educate and reconnect our children with agriculture. Through Farm to School programs, our children will gain an understanding and appreciation for agriculture which will result in healthier eating habits, stronger support for Hawaii's agriculture industry, and will contribute to Hawaii's food security. We still have a long way to go to educate our children about agriculture. Farm to School is another tool that will help in the education process. It is an investment to having well-informed consumers and supporters of Hawaii's agricultural industry in the future. We believe the DOE is better suited to implement all components of Hawaii's Farm to School Program.

Thank you for the opportunity to comment on this measure.



HIPHI Board

*Kilikina Mahi, MBA
Chair
KM Consulting LLC*

*Michael Robinson, MBA, MA
Immediate Past Chair
Hawaii Pacific Health*

*JoAnn Tsark, MPH
Secretary
John A. Burns School of
Medicine, Native Hawaiian
Research Office*

*Debbie Erskine
Treasurer
Kamehameha Schools*

*Keshia Adolpho, LCSW
Molokai Community Health
Center*

*Keawe'aimoku
Kaholokula, PhD
John A. Burns School of
Medicine, Department of
Native Hawaiian Health*

*Mark Levin, JD
William S. Richardson School
of Law*

*Rachel Novotny, PhD, RDN,
LD
University of Hawaii at
Mānoa, College of Tropical
Agriculture and Human
Resources*

*May Okihiro, MD, MS
John A. Burns School of
Medicine, Department of
Pediatrics*

*Misty Pacheco, DrPH
University of Hawaii at Hilo,
Department of Kinesiology
and Exercise Sciences*

*Garret Sugai
Kaiser Permanente*

Date: March 18, 2021

To: Senator Michelle Kidani, Chair
Senator Donna Mercado Kim, Vice Chair
Members of the Senate Committee on Education

Senator Mike Gabbard, Chair
Senator Clarence Nishihara, Vice Chair
Members of the Senate Committee on Agriculture & Environment

From: Lydi Bernal, Hawaii Farm to School Hui Coordinator

Re: SUPPORT for HB767 HD2, Relating to the Farm to School Program

Hearing: March 19, 2021 at 3:00pm Via Videoconference

Aloha and thank you for the opportunity to testify in **support of HB767 HD2 with recommended amendments**, which moves the Hawaii farm to school program from the department of agriculture (HDOA) to the department of education (HIDOE), establishes a programmatic goal for the department of education that at least thirty percent of food served in public schools shall consist of locally sourced products by 2030, creates a staff position for farm-to-school coordinator within the department of education, and creates an annual reporting requirement.

Hawaii Public Health Institute (HIPHI) works to advance policy and systems change to reduce disparities and improve the health of Hawaii residents. HIPHI is home to and testifies here on behalf of the Obesity Prevention Task Forceⁱ and the Hawaii Farm to School Huiⁱⁱ, which **collectively represent over 60 organizations from across the islands.**

The Hawaii Farm to School Hui has worked closely over many years with various offices within HIDOE (facilities/school food, curriculum/CTE, Hawaiian education, and community engagement) to advance a holistic approach to farm to school, which includes the three core elements of school gardens, education, and school food improvements through local procurement. **We fully support the formal establishment of a holistic farm to school program and coordinator position within HIDOE through this bill.**

We also truly appreciate HDOA's hosting of the farm to school/farm to state program to date, as well as their expressed commitment to continue partnering in the effort to bring local agricultural products to Hawaii's public schools and all State institutional food service programs.

Due to the immensity of the important work ahead (for example, as proposed in HB817 HD2 SD1 Relating to Agriculture, which requires *each* state department to ensure that a certain percentage of the produce purchased by

that department is locally-grown), **we maintain the stance that a program and one or more dedicated coordinator positions are needed in both HDOA and HIDOE.**

We therefore respectfully offer the following recommended amendments for HB767 HD2 in Section 3 (page 5, line 7 through page 6, line 7) to remove the strikethrough and update the statute relating to HDOA as follows:

“~~[141-11j Hawaii farm to state school program; farm to state school coordinator.~~ (a) There is established within the department of agriculture a Hawaii farm to state school program. The purpose of the farm to state school program shall be to:

- ~~1. Improve student health;~~
- ~~2. Develop an agricultural workforce;~~
3. **Enrich the local food system through the support and increase of local food procurement for the State’s public schools and other institutions.;**
- ~~4. Accelerate garden and farm based education for the State's public school students; and~~
- ~~5. Expand the relationships between public schools and agricultural communities.~~

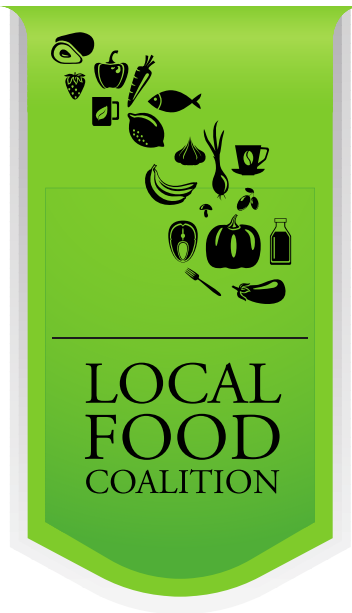
(b) The Hawaii farm to state school program shall be headed by a farm to state school coordinator who shall work in collaboration with the appropriate stakeholders to address the issues of supply, aggregation, distribution, demand, and procurement, ~~and consumption~~ of Hawaii grown foods in state facilities, ~~primarily education facilities, and take reasonable steps to incorporate more agriculture and nutrition education in schools.~~”

Thank you for your strong support of farm to school and farm to state!

Me Ke Aloha,
Lydi Bernal
Hawai'i Farm to School Hui Coordinator

ⁱ Created by the legislature in 2012, the **Obesity Prevention Task Force** comprises of over 40 statewide organizations, and works to make recommendations to reshape Hawaii's school, work, community, and health care environments, making healthier lifestyles obtainable for all Hawai'i residents.

ⁱⁱ Founded in 2010, the **Hawai'i Farm to School Hui** is a statewide network comprising five island-level networks, community organizations, schools, state agencies, and other food systems stakeholders with a collective mission to strengthen Hawaii's farm to school movement. The three pillars of successful farm to school programs are: 1) school gardens and on-campus farms, 2) education, and 3) school food improvements through local procurement.



SENATE COMMITTEE ON EDUCATION
AND
SENATE COMMITTEE ON AGRICULTURE AND ENVIRONMENT

March 19, 2021 – 3:00 P.M. – Via Videoconference

**RE: HB 767 HD2 - Relating to the Farm to School Program -
In Support**

Hawai'i Aquaculture &
Aquaponics Association
Hawai'i Cattlemen's Council
Hawai'i Farm Bureau
Federation
Hawai'i Farmers' Union
United
Hawai'i Food Industry
Association
Hawai'i Food
Manufacturers Association
Kohala Center
Land Use Research
Foundation of Hawai'i
Maui Farm to School
Network (Maui F2SN)
Ulupono Initiative
College of Tropical
Agriculture and Human
Resources - University of
Hawai'i at Manoa

Aloha Chairs Kidani and Gabbard, Vice Chairs Kim and Nishihara and Members of the Committees:

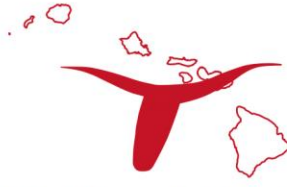
The Local Food Coalition **supports** HB 767 HD2, which moves the Hawaii farm to school program from the department of agriculture to the department of education, and establishes a programmatic goal for the department of education that at least thirty percent of food served in public schools shall consist of locally sourced products by 2030.

Farm to school programs support a nutritious school food environment that encourages students to make healthier choices. It's been six years since the adoption of Act 218 which established the Hawaii farm to school program. As of today, it's estimated that only 3% of food served in public schools is locally sourced. Our keiki deserve better. Increased access to fresh, local agricultural products is vital to the health, success and well-being of our keiki. Establishing a programmatic goal that at least 30% of food served in public schools be locally sourced by 2030 will promote healthy behaviors and help ensure an increase in the amount of local fresh food for our students.

The Local Food Coalition is an organization comprising of farmers, ranchers, livestock producers, investors and other organizations working to provide Hawaii's food supply.

We respectfully request your support of HB 767 HD2. Thank you for the opportunity to submit testimony.

John Garibaldi
808-544-8319
jgaribaldi@wik.com



Hawaii Cattlemen's Council, Inc.

COMMITTEE ON EDUCATION

Senator Michelle N. Kidani, Chair
Senator Donna Mercado Kim, Vice Chair

COMMITTEE ON AGRICULTURE AND ENVIRONMENT

Senator Mike Gabbard, Chair
Senator Clarence K. Nishihara, Vice Chair

HB767 HD1

RELATING TO THE FARM TO SCHOOL PROGRAM.

Friday, March 19, 2021, 3:00 PM
VIA VIDEOCONFERENCE

Chairs Kidani and Gabbard, Vice Chairs Kim and Nishihara, and Members of the Committees,

The Hawaii Cattlemen's Council **supports HB767 HD2** to establish a goal that at least 30% of food served in public school shall consist of locally sourced products by 2030. Ranchers support the Farm to School program and want to see it prosper, for both the health of our students as well as the health of our economy. We encourage the increase in local food purchasing to support Hawaii's ranchers and farmers, keep funds in the state, and encourage a habit for our students to eat and support local agriculture.

There is a need for the procurement process to be streamlined. We are aware of several groups working towards supporting Farm to School and Farm to State, and the Hawaii Cattlemen's Council is participating in these efforts so that both purchasers and producers are educated in how to navigate procurement, and we can increase local purchasing.

Thank you for the opportunity to testify on this matter.

Nicole Galase
Hawaii Cattlemen's Council
Managing Director



Hawaii Cattlemen's Council

Position Statement on Local Beef Production

One of the core strengths of any society lies in its ability to be self-sufficient, to feed itself. Hawaii's beef producers are committed to providing wholesome food for its community that is safe, secure and sustainable.

For most of its existence, Hawaii's beef industry has followed a conventional model with production, harvest and processing occurring within state. In the early 1990's, a combination of rising costs and inefficiencies led Hawaii producers to shift to an export calf model which remains dominant today. However, with increasing consumer demand for locally sourced food, there is renewed focus on expanding local beef production. Several private labels have emerged over the last 10 years, raising the flavor and tenderness profile for local beef, further driving demand. The groundwork for expansion has been set.

In recent years, Hawaii Cattlemen's Council (HCC) and the Hawaii Department of Agriculture (HDOA) recognized limited harvest capacities as one of the primary constraints for expanding local beef production. It has been HCC's position that each island should have access to a full complement of harvest and processing facilities. The economic benefit of efficiencies achieved with consolidation should be balanced with the unique challenges Hawaii's beef industry faces. These include;

- the vulnerability of interisland transportation of perishable goods and/or live animals as it relates to;
 - food security and safety, animal welfare, affordable shipping rates, labor disputes and equipment failure
- the need to develop and maintain a diversified economic base and skilled labor force on outer islands
- limited competitive markets
- quasi-public responsibility of state-owned food processing facilities

Among other things previously identified (see attached, "A Livestock Harvest Facility for Hawaii"), the ideal model should address;

- Flexible marketing – direct sale vs retained ownership
- Increased capacity/access for all producers to harvest, process and market
- Growth of market share through "coopetition" vs direct competition
- Compliance with regulatory planning concepts and concerns, especially as related to environmental issues
- Preservation of the integrity of locally labeled beef
- Opportunity to expand locally branded products

Our producers continue to provide high-quality grass-fed beef year-round, which serves a loyal, sustainability-minded customer base that increasingly want to know where their food comes

from. HCC supports a business model that facilitates infrastructure that allows each island to maintain autonomy over its beef production from gate to plate.

A Livestock Harvest Facility for the State of Hawaii Hawaii Cattlemen's Council



Senate Bill 1257 provides \$1.5M for the planning and design of a livestock harvest facility within the state of Hawaii. This is an ambitious initiative that represents our strong belief in the future of our industry and our commitment to building infrastructure that will help grow and expand our local markets.

Our critical need for this project is based on the following;

- a. increased consumer demand for local beef
- b. increased market demand created by expanding programs, such as our schools' Aina Pono initiative
- c. availability for producers' strategic culling programs
- d. security for animal welfare in the face of disease or drought

The Request for Proposal (RFP) for planning and design should include the following key components and deliverables from firms who will respond;

1. An analysis of a viable business/feasibility plan that addresses expected throughput, revenues, expenses and return on investment related to the operation of a new facility. Our initial recommendation for Hawaii Island is for a 5,000 head capacity that can be expanded to 10,000 head/year. This will be varied island by island. We see this information as critical to attracting capital to our state and industry.
2. Schematics and drawings of the layout of a new facility that can be adapted to meet different environmental conditions for each island and can scale up or down to meet production needs.
3. Analysis and review of technologies to support the remote locations and sensitive environments in which this facility will operate.

4. Review of the following key features of the facility itself. These features will ensure that the proposed model will meet our goal of creating a facility that serves the sustainability needs of our industry addressed through these economic, social and environmental considerations.

Economic	<ul style="list-style-type: none"> • Capacity (target steady state, initial, and ramp up) • Scalable/modular • Marketing partner • Added value/processing • Certification for specialty markets – i.e. export, BRC, GFSI • Management expertise • Transportation costs • Flexible marketing – direct sale vs retained ownership • Innovation and technology • Useful life • Potential for multi-species use • Scope of facility—slaughter, processing, and further processing capabilities • Value Added Products and Processing
Social	<ul style="list-style-type: none"> • Food safety • Worker safety • Animal well-being • Employee engagement • Central location • Affordable housing
Environmental	<ul style="list-style-type: none"> • Renewable energy • Waste disposal - bio digester • Water resources and requirements • Critical path for permits • Environmental Impact Statement • Air emissions/odor • Proximity to existing infrastructure and need for establishment of new connections to electrical, water, wastewater, and roadways.

HCC believes our industry and agriculture as a whole are at a critical crossroads. There is a great deal to be optimistic about including consumer demand for more locally sourced food, public officials who have declared a commitment to improve Hawaii’s food security, an advocate in our HDOA administration who believe in the need for Hawaii’s agriculture to thrive and people within the ranching community with the will to move our industry forward. These things combine to create powerful synergy to keep our industry and agriculture a vibrant and relevant part of our state’s economy and landscape. This project is the result of that synergy and a real, tangible move forward for the beef industry.



LAND USE RESEARCH
FOUNDATION OF HAWAII

1100 Alakea Street, Suite 408
Honolulu, Hawaii 96813
(808) 521-4717
www.lurf.org

March 15, 2021

Senator Michelle N. Kidani, Chair
Senator Donna Mercado Kim, Vice Chair
Senate Committee on Education

Senator Mike Gabbard, Chair
Senator Clarence K. Nishihara, Vice Chair
Senate Committee on Agriculture and Environment

Testimony in Support of HB 767, H.D.2, Relating to Farm to School Program (Moves the Hawaii Farm to School Program from the Department of Agriculture [DOA] to the Department of Education [DOE]; establishes a programmatic goal for the DOE that at least thirty percent of food served in public schools shall consist of locally sourced products by 2030; creates an annual reporting requirement; effective 7/1/2051.)

Friday, March 19, 2021, 3:00 p.m., in Conference Room 229 & Videoconference

The Land Use Research Foundation of Hawaii (LURF) is a private, non-profit research and trade association whose members include major Hawaii landowners, developers, and utility companies. One of LURF's missions is to advocate for reasonable, rational, and equitable land use planning, legislation and regulations that encourage well-planned economic growth and development, while safeguarding Hawaii's significant natural and cultural resources and public health and safety.

LURF appreciates the opportunity to provide testimony in **support of HB 767, H.D.2**, and to offer comments.

HB 767, H.D.2. The purpose and intent of this bill is to move the Hawaii farm to school program from the DOA to the DOE and establish a programmatic goal that at least thirty per cent (30%) of food served in public schools will be locally sourced by 2030.

LURF's Position. LURF members include farmers, ranchers and landowners who own, maintain, and engage in agricultural enterprises, and who consider programs that support the promotion and consumption of healthy, locally sourced food products significant to the conduct of their operations and to help sustain their businesses.

These landowners and agricultural stakeholders believe HB 767, H.D.2 will greatly assist with the effort to achieve long-term sustainability of Hawaii's food supply, economic growth, and disaster preparedness, including increased production of food for our schools. Assuring the DOE's incorporation and use of locally grown food into school food programs will also assist by acquainting students to healthy local food options; developing an educated agricultural workforce; enriching the local food system through increased local food procurement for schools and institutions; and expanding the relationship between schools and agricultural communities.

The purpose of this bill is consistent with the underlying intent and objectives of the IAL laws (Hawaii Revised Statutes, Sections 205-41 to 52), which were enacted to fulfill the mandate in Article XI, Section 3, of the Hawaii State Constitution, "to conserve and protect agricultural lands, promote diversified agriculture, increase agricultural self-sufficiency and assure the availability of agriculturally suitable lands."

LURF therefore appreciates the objective of HB 767, H.D.2, which is to increase consumption of locally grown food; instigating interest in agricultural careers; support agriculture and foster further collaboration between the DOE and agriculture-related operations. Passage of the long-awaited IAL legislation would be meaningless without implementation of such measures.

By recognizing the significance of, and need to assist the local agriculture industry, and implement measures which help to support the growth and maintenance of agriculture in the State, this bill significantly helps to promote economically viable agriculture and food self-sufficiency in Hawaii.

For the reasons stated above, LURF is in **support of HB 767, H.D.2**, and respectfully urges your favorable consideration of this bill.



Environmental Caucus of The Democratic Party of Hawai'i

Tuesday, March 16, 2021

House Bill 767
Testifying in Support

Aloha Chair Kidani; Vice Chair Kim; Chair Gabbard; Vice Chair Nishihara; and Members of the Senate Committees on Education and Agriculture/Environment:

The Environmental Caucus of the Democratic Party of Hawaii stands in support of HB 767 which moves the Hawaii farm to school program from the Department of Agriculture to the Department of Education and establishes a programmatic goal for the Department of Education that at least thirty percent of food served in public schools shall consist of locally sourced products by 2030. .

By focusing on local relationships that “regionalize the menu”, children will have greater access to more culturally appropriate and nutritious foods: i.e., kalo, sweet potatoes, breadfruit, etc.

Closer proximity relationships will reduce carbon emissions related to shipping and packaging waste associated with importation from the mainland.

Passage of HB 767 will create a mandate for increasing school food procurement from local farmers and thus will help grow our local economy.

Mahalo for the opportunity to testify,

Jeff McKnight

Chair, Food Security and Agriculture Committee
Vice Chair., Environmental Caucus



**Testimony to the Senate Joint Committee on Education, and Agriculture and
Environment
Friday, March 19, 2021; 3:00 p.m.
State Capitol, Conference Room 229
Via Videoconference**

RE: HOUSE BILL NO. 0767, HOUSE DRAFT 2, RELATING TO THE FARM TO SCHOOL PROGRAM.

Chair Kidani, Chair Gabbard, and Members of the Joint Committee:

The Hawaii Primary Care Association (HPCA) is a 501(c)(3) organization established to advocate for, expand access to, and sustain high quality care through the statewide network of Community Health Centers throughout the State of Hawaii. The HPCA **SUPPORTS** House Bill No. 0767, House Draft 2, RELATING TO THE FARM TO SCHOOL PROGRAM.

As received by your Committee, House Bill No. 0767, would:

- (1) Transfer the Farm to School Program (Program) from the Department of Agriculture to the DOE;
- (2) Establish the Farm to School Coordinator position who would oversee the Program; and
- (3) Direct the Program to ensure that 30% of food served in public schools consist of locally-sourced products by 2030.

The bill would take effect on July 1, 2051, to facilitate discussion.

By way of background, the HPCA represents Hawaii Federally-Qualified Health Centers (FQHCs). FQHCs provide desperately needed medical services at the frontlines in rural and underserved communities. Long considered champions for creating a more sustainable, integrated, and wellness-oriented system of health, FQHCs provide a more efficient, more effective and more comprehensive system of healthcare.

Testimony on House Bill No. 0767, House Draft 2
Friday, February 19, 2021; 3:00 p.m.
Page 2

Over the past four years, HPCA has served as a member of the Obesity Prevention Task Force, and as such has joined the Hawaii Public Health Institute and other advocates in support of efforts to promote healthy diets and the increased consumption of locally-grown vegetables and fruits in our schools and communities.

The HPCA asserts that the COVID-19 pandemic has severely threatened the health and welfare of our citizens, especially Hawaii's underprivileged and rural communities. With so many people unemployed, entire families are struggling to put food on the table on a consistent basis. All one needs to do is visit one of our member FQHC's food distribution events and see the line of cars stretch for miles and the large number of people who wait for hours to receive some surplus food.

For many families, the only consistent meal that children receive is at school.

If a larger portion of the food consumed by schools is locally grown, this will help to diversify our economy and improve the sustainability of our State. This in turn will put Hawaii in a stronger position to address the next global pandemic when it comes.

We urge your favorable consideration of this bill.

Thank you for the opportunity to testify. Should you have any questions, please do not hesitate to contact Public Affairs and Policy Director Erik K. Abe at 536-8442, or eabe@hawaiiipca.net.



Food+ Policy Internship 2021

food@purplemaia.org

March 17, 2021

To: Chair Kidani, Vice Chair Kim, and members of the Senate Committee on Education/Chair Gabbard, Vice Chair Nishihara, and members of the Senate Committee on Agriculture and Environment

Subject: Testimony in SUPPORT of HB 767, Relating to the Farm to School Program

Aloha mai kākou,

My name is Brian “Ioane” Jahn and I am writing on behalf of the UH West O’ahu Food+ Policy Internship to express our collective and unequivocal SUPPORT for HB 767, Relating to the Farm to School Program.

HB767 moves the Hawai’i farm to school program from the department of agriculture to the department of education. It establishes a programmatic goal for the department of education that at least thirty percent of food served in public schools shall consist of locally sourced products by 2030, and it creates an annual reporting requirement.

We are very concerned for communities in Hawai’i with regard to food security, food sovereignty, and overall economic instability as a result of the COVID-19 pandemic. As strong advocates for the Farm to School Program, we feel that this is one area where we cannot fail as it deals primarily with the health, safety, well-being, and education of our keiki.

Setting goals based on a percentage of the overall budget, whether it expands or shrinks, is beneficial in helping to ensure the recirculation of state and federal dollars to local food producers and the local food system economy. Some of the affected places include processing centers, distributors, food hubs, and farmers who actively contribute to Hawai’i’s food system resilience and sustainability. By supporting HB 767, we can help to ensure these businesses are being prioritized and financially supported, but most importantly, that our keiki have a responsibly-managed, fully-functional program that allows the Department of Education greater overall control.

The Food+ Policy internship develops student advocates who learn work skills while increasing civic engagement to become emerging leaders. We focus on good food systems policy because we see the importance and potential of the food system in combating climate change and increasing the health, equity, and resiliency of Hawai’i communities.

In 2021, the pilot cohort of interns are juniors, seniors, and recent graduates of the University of Hawai’i West O’ahu’s Sustainable Community Food Systems program. They are a mix of traditional and nontraditional students, including parents and veterans, who have backgrounds in education, farming, and Hawaiian culture.



Food+ Policy Internship 2021

food@purplemaia.org

By creating a real set of goals we can achieve a stable anchor point for Farm to School to have the best chance at success. Furthermore, if proposed goals are met by 2030, roughly ~\$33,000,000 of the DOE Food Service Purchasing budget--which comes from state tax dollars, as well as federal subsidies--will be harnessed and recirculated to local food producers and the local food systems economy; this will undoubtedly lead to greater food security for all Hawai'i residents, and significantly increase our food system resilience.

On behalf of the Hawai'i Food+ Policy Internship, I would like to thank all members of the Senate committees on Education & Agriculture and Environment for considering the comments made herein.

Me ke aloha,

Ioane & the Food+ Interns

The Food+ Policy internship develops student advocates who learn work skills while increasing civic engagement to become emerging leaders. We focus on good food systems policy because we see the importance and potential of the food system in combating climate change and increasing the health, equity, and resiliency of Hawai'i communities.

In 2021, the pilot cohort of interns are juniors, seniors, and recent graduates of the University of Hawai'i West O'ahu's Sustainable Community Food Systems program. They are a mix of traditional and nontraditional students, including parents and veterans, who have backgrounds in education, farming, and Hawaiian culture.



PO Box 1177 Koloa HI 96756
808.652.5286 hawaiiSEED.org

March 17, 2021

Support of HB 767
RELATING TO THE FARM TO SCHOOL PROGRAM

Aloha Chair, Vice Chair and Committee Members,

Hawai`i SEED strongly supports HB 767 Hawai`i Grown food into the school meal program.

We support moving the Hawaii farm to school program from the department of agriculture to the department of education and establishing a programmatic goal for the department of education that at least thirty percent of food served in public schools shall consist of locally sourced products by 2030.

More local food should be sourced for schools and other institutions because the more we support our local farmers it will keep the money into the local economy.

We need to feed our keiki and as many people as possible, more culturally appropriate and nutritious fresh foods such as kalo, ulu and sweet potato.

Please support HB to grow our local economy and nourish our growing keiki. We all need to build our health and immune systems for longevity.

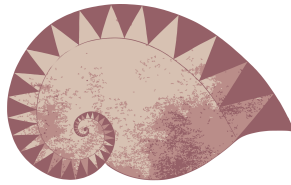
Thank you very much.

Sincerely,

Jeri Di Pietro, President
Hawai`i SEED
(808) 651-1332

Hawaii Farm to School Program; Farm to School Meals; DOE; DOA

Moves the Hawaii farm to school program from the department of agriculture to the department of education. Establishes a programmatic goal for the department of education that at least thirty percent of food served in public schools shall consist of locally sourced products by 2030



Pono Hawai'i Initiative

Patrick Shea - Treasurer • Lena Mochimaru - Secretary
Nelson Ho • Summer Starr

Thursday, March 18, 2021

HB767 HD2 Relating to the Farm to School Program
Testifying in Support

Aloha Chair and members of the committee,

The Pono Hawai'i Initiative (PHI) **supports HB767 HD2 Relating to the Farm to School Program. This measure moves the Hawaii Farm to school program to the Department of Education and sets a goal of 30% of food served in public schools to consist of locally sourced products by 2030.**

This measure would substantially help local farmers and local food producers. This would help to keep jobs and money on our islands while also increasing the fresh produce available to our keiki.

For these reasons, we urge you to move pass HB767 HD2.

Mahalo for the opportunity,

Gary Hooser
Executive Director
Pono Hawai'i Initiative



Bobby Farias
President
Hawaii Meats, LLC
91-319 Olai Street
Kapolei, HI 96707

COMMITTEE ON EDUCATION
Senator Michelle Kidani, Chair
Senator Donna Mercado Kim, Vice Chair

COMMITTEE ON AGRICULTURE AND ENVIRONMENT
Senator Mike Gabbard, Chair
Senator Clarence Nishihara, Vice Chair

Re: HB 767, HD2
Friday, March 19, 2021, 3:00pm
Conference Room 229
VIA Video Conference

Aloha e Chairs Kidani & Gabbard, Vice Chairs Kim & Nishihara, and Members of the Committees:

My name is Bobby Farias, and I am the President and Partner of Hawaii Meats, LLC, a locally vertically-integrated ranch. Hawaii Meats, LLC **supports HB767, HD2** to establish a goal that at least 30% of food served in public school shall consist of locally sourced products by 2030. Ranchers support the Farm to School program and want to see it prosper, for both the health of our students as well as the health of our economy. We encourage the increase in local food purchasing to support Hawaii's ranchers and farmers, keep funds in the state, and encourage a habit for our students to eat and support local agriculture.

Thank you for the opportunity to testify on this issue.

Respectfully,

Bobby Farias
President, Hawaii Meats, LLC



Senate Committee on Education

Senate Committee on Agriculture and Environment

Hawai'i Alliance for Progressive Action (HAPA) Supports: HB767 HD2

Friday, March 19th, 2021 3:00 p.m.

Aloha Chair Kidani, Chair Gabbard, Vice Chair Mercado Kim, Vice Chair Nishihara and Members of the Committee,

HAPA strongly supports HB767 HD2, which we believe helps to provide a tangible solution to help address gaps and missed opportunities in our local food system, while supporting our local farmers and food producers, as well as our economy.

HB767 moves the Hawai'i farm to school program from the department of agriculture to the department of education and establishes a programmatic goal for the department of education that at least thirty percent of food served in public schools shall consist of locally sourced products by 2030.

HB767 creates a mandate for increasing school food procurement from local farmers which helps schools and communities improve health education, nutrition and understand the value of sourcing local food. The more we source local foods for schools and other institutions the more we support our local farmers and help our economy. When sourcing more local food we also reduce carbon emissions related to shipping and packaging waste associated with importation from the United States.

HB767 will also support access to more culturally appropriate and nutritious foods for public school students, such as kalo, sweet potatoes and others.

Please support HB767 to help grow our local food economy, and nourish our keiki. Thank you for your consideration.

Respectfully,

A handwritten signature in black ink, appearing to read 'Anne Frederick', is written in a cursive style.

Anne Frederick
Executive Director

HB-767-HD-2

Submitted on: 3/17/2021 10:09:39 AM

Testimony for EDU on 3/19/2021 3:00:00 PM

Submitted By	Organization	Testifier Position	Present at Hearing
Helen Cox	Testifying for Kauai Climate Action Coalition	Support	No

Comments:

Aloha Kakou,

I am writing to support HB 767, the Farm to School bill. Kauai Climate Action Coalition supports bills that are impactful, economically viable, socially just, and address the climate crisis we face now. This bill meets all these criteria and has multiple benefits. Students will have more nutritious food due to reduced processing and shipping time, farmers and others will benefit, economically, students from all economic levels will partake in healthy food, and by increasing local food production the islands will have greater resilience in the face of interruptions that the climate crisis will bring. In addition, increased local food production will move the islands in the direction desired since I was a child in the 50s and 60s--a more diverse economy. Please support HB 767 HD2.

Mahalo

Helen A Cox, Chair, Kauai Climate Action Coalition

HB-767-HD-2

Submitted on: 3/18/2021 2:23:51 PM

Testimony for EDU on 3/19/2021 3:00:00 PM

Submitted By	Organization	Testifier Position	Present at Hearing
Ted Bohlen	Testifying for Climate Protectors Hawai'i	Support	No

Comments:

To: The Honorable Michelle Kidani, Chair, the Honorable Donna Mercado Kim, Vice Chair, and Education Committee members, and

The Honorable Mike Gabbard, Chair, the Honorable Clarence Nishihara, Vice Chair, and Agriculture and Environment Committee Members

From: Climate Protectors Hawai'i (by Ted Bohlen)

Re: Hearing **HB767 HD2- RELATING TO THE FARM TO SCHOOL PROGRAM.**

Friday March 19, 2021, 3:00 p.m., by videoconference

Aloha Chairs Kidani and Gabbard, Vice Chairs Kim and Nishihara, and Senate Education and Agriculture and Environment Committee members:

The Climate Protectors Hawai'i is a group focused on reversing the climate crisis. **The Climate Protectors Hawai'i STRONGLY SUPPORTS HB767 HD2!**

This bill would establish a programmatic **goal of 30% local food for public school meals**. This is not only healthier for the keiki, but also will reduce greenhouse gas emissions from transporting food from distant places.

HB 767, H.D.2 will help achieve long-term sustainability of Hawaii's food supply, economic growth, and disaster preparedness, including increased production of food for our schools. Assuring the DOE's incorporation and use of locally grown food into school food programs will also assist by: acquainting students to healthy local food options; developing an educated agricultural workforce; enriching the local food system through increased local food procurement for schools and institutions; and expanding the relationship between schools and agricultural communities.

As a tropical island State, Hawai'i will be among the first places harmed by the global climate crisis, with more intense storms, loss of protective coral reefs, food insecurity, and rising sea levels destroying our shorelines. As a tropical island State, Hawai'i will be among the first places harmed by the global climate crisis, with more intense storms,

loss of protective coral reefs, **food insecurity**, and rising sea levels destroying our shorelines. We must do all we can to reduce our carbon footprint and become carbon negative and reduce food importation as soon as possible.

Please pass this bill! Mahalo!

Climate Protectors Hawai'i (by Ted Bohlen)

HB-767-HD-2

Submitted on: 3/17/2021 6:33:09 PM

Testimony for EDU on 3/19/2021 3:00:00 PM

Submitted By	Organization	Testifier Position	Present at Hearing
David Mulinix	Testifying for Our Revolution Hawaii	Support	No

Comments:

Aloha Committee,

On behalf of Our Revolution Hawaii's 7,000 members and supporters statewide we stand in STRONG SUPPORT of HB767.

Mahalo for your consideration,

Dave Mulinix

Community Organizer

Our Revolution Hawaii

HB-767-HD-2

Submitted on: 3/18/2021 1:31:08 AM

Testimony for EDU on 3/19/2021 3:00:00 PM

Submitted By	Organization	Testifier Position	Present at Hearing
Thomas Brandt	Testifying for Foresight/Policy Analysis	Support	No

Comments:

Chairs Kidani and Gabbard, and members of the Senate Committees on Education, and Agriculture and Environment:

I am testifying in support of HB 767, HD2, for all of the same reasons I support other "Farm to School" legislation and other bills intended to increase local food self-reliance, reasons which are delineated further below.

I agree the HiDOE is better positioned to determine how to achieve the specific goal proposed by this bill, but also think input should be sought from HiDOA and other stakeholders as well, and

any plan to achieve the intent of this bill should incorporate the more comprehensive set of factors I also described below when determining the most "cost-effective" ways to achieve the intent of this bill, and not confined only to the HiDOE's current or future operating budgets.

For example, ALL costs--both direct and indirect, internalized and externalized, immediate and long-term--should be considered in determining what are the most cost-effective ways to maximize local food self-reliance for Hawaii taxpayers and the state budget as a whole, and not just the more limited constraints of the HiDOE budget alone, in my opinion.

"All costs" would not only factor in the external subsidies--from production through shipment to Hawaii--that artificially cheaper imported food enjoys,

but also all local medical, environmental, socio-cultural and economic benefits of increasing local food-self reliance--both direct and indirect--e.g.

the increased local economic multiplier effect of NOT exporting billions of dollars annually to import food.

in addition to direct fiscal costs alone, in my opinion.

Hawaii can and should substantially increase local food self-reliance for numerous reasons, and can do so in several ways I think will be a net positive for Hawaii's medical, environmental, and economic health.

I also think this can be done without requiring perpetual subsidization of local food producers by local consumers and/or taxpayers to keep them competitive with artificially cheaper imported food,

which enjoys an unfair competitive advantage due to being externally subsidized in several ways, both direct and indirect, from production to shipment to Hawaii.

The pandemic has also put renewed focus on the Governor's goal to double local food production, and the need to increase local food self-reliance and resiliency

to better prepare for a wider range of both predictable and unpredictable possible causes of future import supply disruptions and cost increases.

HB 767, HD2 provides one tangible way to do this.

Increasing the amount of locally-produced food purchased by taxpayer-funded or subsidized institutional bulk buyers can help increase economies of scale for, and the financial viability of, local food producers,

thereby enabling them to better compete with artificially cheaper imported food,

while synergistically also improving Hawaii's food security and local access to more affordable healthy food which, in turn, can help reduce acute and chronic health care costs, as well as contributing to local environmental protection and restoration efforts.

I would also add that any mandated set-aside of state-owned ag lands for food producers who intend to primarily sell to local buyers should not simply be auctioned to the highest bidders, but should be designed to support a wide variety of producers at the lowest possible land rental costs, perhaps starting at zero and increasing on a sliding scale as net revenues increase.

In conclusion, I think the combination of:

- "buy local first" mandates for taxpayer-funded or subsidized institutional food buyers

- food hubs,

- below fair-market land rental or purchase costs,

- one-time upfront ag infrastructure subsidization, and

- exemption from state and local taxes on in-state food sales by in-state food producers

all could help level the playing field for local food producers relative to artificially cheaper imported food,

but without asking local consumers and/or local taxpayers to perpetually pay more to "buy local."

Thank you for the opportunity to offer these comments.

Thomas Brandt

Foresight/Policy Analysis

HB-767-HD-2

Submitted on: 3/17/2021 3:10:34 PM

Testimony for EDU on 3/19/2021 3:00:00 PM

Submitted By	Organization	Testifier Position	Present at Hearing
pamela burrell	Testifying for apollo kauai, zero waste kauai	Support	No

Comments:

Aloha members of the House.

HB767 is an important step in giving the department of education the task of purchasing local food for our students.

I feel a modest 30% by 2030 is falling very short and should be by 2022!

Regards,

Pamela Burrell, Kalihiwai, Kauai

HB-767-HD-2

Submitted on: 3/16/2021 10:04:14 AM

Testimony for EDU on 3/19/2021 3:00:00 PM

Submitted By	Organization	Testifier Position	Present at Hearing
Joe Hammond	Individual	Support	No

Comments:

I am in support of this bill. I believe that if Hawaii has a farm to school program it will help both our farmers and schools. This will help our local farmers wouldn't have less competition with wherever our schools are currently getting their food from. On the school side of it, it would be smart to know where they are receiving their food from. Knowing that it is local might give many parents a peace of mind in that they know exactly what their children is eating and where it came from.

HB-767-HD-2

Submitted on: 3/16/2021 2:33:21 AM

Testimony for EDU on 3/19/2021 3:00:00 PM

Submitted By	Organization	Testifier Position	Present at Hearing
Jennifer Azuma Chrupalyk	Individual	Support	No

Comments:

I support with restriction: Let it hereby be known that the Department of Education shall not interfere with the growth and production of agriculture that will serve as food for our students. Let is also be resolved that the Department of Education consider adding ag programs to the schools. Please take a look at the success model of Saul Agricultural High School that is in the heart of Philadelphia - where there is no agriculture, but the school succeeds in the growth and development of the agricultural industry through opportunities given in that school.

HB-767-HD-2

Submitted on: 3/15/2021 6:09:24 PM

Testimony for EDU on 3/19/2021 3:00:00 PM

Submitted By	Organization	Testifier Position	Present at Hearing
cheryl B.	Individual	Support	No

Comments:

Support with comments

This is an excellent goal.. but 30% is not high enough. It should be at least 50%. We can do this.

HB-767-HD-2

Submitted on: 3/16/2021 10:22:52 AM

Testimony for EDU on 3/19/2021 3:00:00 PM

Submitted By	Organization	Testifier Position	Present at Hearing
Rayleen Egami	Individual	Support	No

Comments:

I strongly support this bill. It is imperative to sustainability efforts to support the integration of local foods into the DOE system.

HB-767-HD-2

Submitted on: 3/15/2021 10:09:56 PM

Testimony for EDU on 3/19/2021 3:00:00 PM

Submitted By	Organization	Testifier Position	Present at Hearing
Kelsey Amos	Individual	Support	No

Comments:

I support. This bill establishes an important 30% goal for locally sourcing school food.

HB-767-HD-2

Submitted on: 3/16/2021 12:12:35 PM

Testimony for EDU on 3/19/2021 3:00:00 PM

Submitted By	Organization	Testifier Position	Present at Hearing
Joan Lander	Individual	Support	No

Comments:

Please pass this bill to encourage farmers and growers to produce healthy food for our kids.

HB-767-HD-2

Submitted on: 3/16/2021 7:31:50 PM

Testimony for EDU on 3/19/2021 3:00:00 PM

Submitted By	Organization	Testifier Position	Present at Hearing
Meredith Buck	Individual	Support	No

Comments:

I support HB767, though I'm concerned about the constant and ongoing cuts to DOE funding. I worry that DOE won't have funds to make food sourcing and outdoor education goals a reality, especially if the cuts continue. However, if DOE is still better equipped than DOA to achieve these, I offer my enthusiastic support. Mahalo nui loa for your time and consideration.

HB-767-HD-2

Submitted on: 3/17/2021 2:31:20 PM

Testimony for EDU on 3/19/2021 3:00:00 PM

Submitted By	Organization	Testifier Position	Present at Hearing
Alani Bagcal	Individual	Support	No

Comments:

Dear Chairs, Vice-Chairs and members of the Committee,

My name is Alani Bagcal and I am writing today in strong support for HB767.

Farm to school programs are something I wish I had, and am hoping my children will grow up to have. I believe these programs will provide youth with access to nutritious, culturally significant foods from local farmers, helping them understand where their food comes from and how their food choices impact their health, environment and community. I also think it is vital to support local farmers and keep money within the community.

Thank you for this opportunity to testify in strong support of this bill.

Alani Bagcal

alani.bagcal@ppvnh.org

96815

HB-767-HD-2

Submitted on: 3/17/2021 10:30:51 AM

Testimony for EDU on 3/19/2021 3:00:00 PM

Submitted By	Organization	Testifier Position	Present at Hearing
Kapulani Antonio	Individual	Support	No

Comments:

Aloha.

This bill is an important step towards food sovereignty as it will increase educational opportunities for haumāna (students) to see where their food comes from and to understand how crucial it is to mālama i ka 'āina. It will help Hawai'i in the long run to not be as dependent on outside sources.

Please pass this important bill giving the DOE the kuleana to manage the Hawai'i farm to school program.

Me ka mahalo,

Kapulani Antonio

HB-767-HD-2

Submitted on: 3/17/2021 10:32:36 AM

Testimony for EDU on 3/19/2021 3:00:00 PM

Submitted By	Organization	Testifier Position	Present at Hearing
Janet Pappas	Individual	Comments	No

Comments:

Dear EDU and AEN Chairs, Vice Chairs and Committee Members,

The State began the Farm-to-School program back in 2015, in part to encourage kids to consume more healthful, locally-grown foods; but no measurable progress has been made. I support Bill HB767 if the Hawaii Dept of Education can do a better job of administering the program than HDOA, but I have some concerns:

- I believe intermediate goals need to be set to arrive at 30% locally-produced food in school lunches by 2030. I suggest interim goals at perhaps two-year intervals to ensure that progress is being made.

- The annual report, though nice to know, seems quite onerous and may be impossible to tally. I'd prefer knowing if the kids were eating the foods being served and learning to enjoy the local fruits and vegetables.

- I strongly support this bill (HB767 HD2) if the emphasis is on serving fresh fruits and vegetables and not just "local food products."

Thank you for listening and for the opportunity to testify.

Sincerely,

Jan Pappas - Aiea, Hawaii

HB-767-HD-2

Submitted on: 3/17/2021 1:37:42 PM

Testimony for EDU on 3/19/2021 3:00:00 PM

Submitted By	Organization	Testifier Position	Present at Hearing
Ruston Utu	Individual	Support	No

Comments:

I highly support this bill. Having a farm to school program will allow for students and parents to know where exactly their food is coming from. I believe that parents would truly like the idea of knowing that their child is eating food that is locally sourced and not food that is shipped and preserved in order to keep the food "fresh." Students can also learn to appreciate our local farmers as they can be taught how they get their food from the farms to their plates. I think it opens a lot of conversation with teachers and students about their future careers, health and well-being. Also, this would be the first farm to school program.

HB-767-HD-2

Submitted on: 3/17/2021 2:52:36 PM

Testimony for EDU on 3/19/2021 3:00:00 PM

Submitted By	Organization	Testifier Position	Present at Hearing
Jennifer Kau'i Young	Individual	Support	No

Comments:

Aloha mai kākou:

When I learned two years ago that Hawai'i imports ~80% of our food, knowing how abundant the Hawai'i of my ancestors was, I was appalled, to say the least.

School food programs not only provide Hawai'i's youth with access to nutritious, healthy food from their community, but it also helps them understand the origin and health of their food, and the local economy of food, too.

COVID-19 and the impact on the tourism industry, an industry that has been too heavily relied on in the past, made it clear that the people of Hawai'i and our leaders need to evolve and diversify. Let us be the generation that brings food security back to Hawai'i nei, so that we can guarantee our people nutritious food and give ourselves a new, sustainable industry to thrive in.

Me ka ha'aha'a,

Jennifer Kau'i Young

HB-767-HD-2

Submitted on: 3/17/2021 2:07:44 PM

Testimony for EDU on 3/19/2021 3:00:00 PM

Submitted By	Organization	Testifier Position	Present at Hearing
Nanea Lo	Individual	Support	No

Comments:

Hello,

My name is Nanea Lo. I'm from Papakāleia, O'ahu currently residing in Māhili in my ancestral homelands. I'm writing in support of HB767. HB767 moves the Hawai'i Farm to School program from the Department of Agriculture to the Department of Education. Establishes a programmatic goal for the Department of Education that at least 30% of food served in public schools shall consist of locally sourced products by 2030.

Farm to school programs benefit us by:

- Provides Hawai'i's youth with access to nutritious, healthy food from their community
- Helps students understand where their food comes from and how their food choices can impact their health, the environment, and their community. This can lead to students developing community pride
- Supports local farmers financially and keep money within the community
- Saves Hawai'i money by decreasing costs for school meal programs
- Reduces carbon emissions and packaging waste from shipping

Support HB767.

me ke aloha 'Āina,

Nanea Lo

HB-767-HD-2

Submitted on: 3/17/2021 2:44:28 PM

Testimony for EDU on 3/19/2021 3:00:00 PM

Submitted By	Organization	Testifier Position	Present at Hearing
laurie boyle	Individual	Support	No

Comments:

I support hb767 for the simple reasons that our keiki deserve good nutrition sourced from our own land, grown by local farmers. Better for the keiki, the environment, our budget, and our greater consciousness.

Mahslo for your attention.

HB-767-HD-2

Submitted on: 3/17/2021 2:17:25 PM

Testimony for EDU on 3/19/2021 3:00:00 PM

Submitted By	Organization	Testifier Position	Present at Hearing
Will Caron	Individual	Support	No

Comments:

Aloha e committee members,

I support HB443 HD1, which would require the Department of Education to conduct a comprehensive cost analysis of the department's food services and student meals programs to, in part, increase the use of locally grown agricultural products. This measure, along with a couple others, will help strengthen our farm-to-school system.

A strong farm-to-school system will provide Hawai'i's youth with access to nutritious, healthy food from their community. This has multiple benefits including:

- Helping students understand where their food comes from and how their food choices can impact their health, the environment, and their community. This can lead to students developing community pride
- Supporting local farmers financially and keeping money within the community.
- Saving Hawai'i money by decreasing costs for school meal programs.
- Reducing carbon emissions and packaging waste from shipping.
- Making Hawai'i more food independent and resilient.

Please support the bill. Mahalo!

HB-767-HD-2

Submitted on: 3/17/2021 4:10:57 PM

Testimony for EDU on 3/19/2021 3:00:00 PM

Submitted By	Organization	Testifier Position	Present at Hearing
Rosemary Robinson	Individual	Support	No

Comments:

Aloha,

I am writing in support of HB767 HD2, moving the farm to school program from the department of ag to the department of education, and setting a goal of at least 30% of the food served to our keiki is local and organic, grown without pesticides.

Our keiki deserve the best, and as studies have shown, good nutrition correlates with optimal learning. Using local food cross pollinates in that it supports local food supplies, creates jobs in the community thereby supporting the local economy, and cuts down on foods that have to be excessively packaged and shipped.

It's important to fund this as well, so that the program can be run well and goals are met. (as a former teacher, we had a lot of mandates with no funding which applied undue stress on an already overtaxed staff)

Warm regards,

Rosemary Robinson

Ha'iku, HI

808-868-6479

HB-767-HD-2

Submitted on: 3/17/2021 4:16:40 PM

Testimony for EDU on 3/19/2021 3:00:00 PM

Submitted By	Organization	Testifier Position	Present at Hearing
Hayley K Giorgio	Individual	Support	No

Comments:

Aloha kakou,

My name is Hayley K. Giorgio and I live and come from Wainiha/Ha'ena on Kaua'i. I'm writing to support bill [HB767] because it:

- Provides Hawai'i's youth with access to nutritious, healthy food from their community
- Helps students understand where their food comes from and how their food choices can impact their health, the environment, and their community. This can lead to students developing community pride
- Supports local farmers financially and keep money within the community
- Saves Hawai'i money by decreasing costs for school meal programs
- Reduces carbon emissions and packaging waste from shipping

I have two young boys - one currently at Hanalei Elementary - and any chance of improvement with regards to food, education and our local economy, I am in full support of. Mahalo for your time and consideration, malama pono.

Hayley K. Giorgio

808-482-0289, hayleygiorgio@gmail.com

HB-767-HD-2

Submitted on: 3/17/2021 4:24:57 PM

Testimony for EDU on 3/19/2021 3:00:00 PM

Submitted By	Organization	Testifier Position	Present at Hearing
Roberts Leinau	Individual	Support	No

Comments:

You are what you eat. Lets help out young students grow up healthy. Lets help our farmers succeed at the same time. Mahalo, Bob Leinau

HB-767-HD-2

Submitted on: 3/17/2021 5:32:29 PM

Testimony for EDU on 3/19/2021 3:00:00 PM

Submitted By	Organization	Testifier Position	Present at Hearing
Laura Gray	Individual	Support	No

Comments:

I support this bill, HB767 HD2, because farmers need all the help we can get right now and kids need healthy, fresh food. We have a hard time selling our produce when it ripens, and also, as an R.N. I am keenly aware of the adverse health effects of processed food on our local kids. This is a win, win. I just wish it could be !00% local pproduce tomorrow. Mahalo, Laura Gray R.N.

HB-767-HD-2

Submitted on: 3/17/2021 6:00:04 PM

Testimony for EDU on 3/19/2021 3:00:00 PM

Submitted By	Organization	Testifier Position	Present at Hearing
Karen Shishido	Individual	Support	No

Comments:

I support this bill because it provides youth with access to nutritious, healthy food from their community. It will also help students understand where their food comes from and how their food choices can impact their health, the environment, and their community. This can lead to students developing community pride.

HB-767-HD-2

Submitted on: 3/17/2021 6:10:35 PM

Testimony for EDU on 3/19/2021 3:00:00 PM

Submitted By	Organization	Testifier Position	Present at Hearing
Michele Nihipali	Individual	Support	No

Comments:

- Provides Hawai'i's youth with access to nutritious, healthy food from their community
- Helps students understand where their food comes from and how their food choices can impact their health, the environment, and their community. This can lead to students developing community pride
- Supports local farmers financially and keep money within the community
- Saves Hawai'i money by decreasing costs for school meal programs
- Reduces carbon emissions and packaging waste from shipping

This program needs to be under the Department of Education. It will provide that 30% of food served in schools is grown locally. Our Keiki need to know the food they eat is connected to their community and culture.

Mahalo for your consideration in this,

Michele Nihipali

54-074 A Kam Hwy.

Hauula, HI 96717

HB-767-HD-2

Submitted on: 3/17/2021 6:56:30 PM

Testimony for EDU on 3/19/2021 3:00:00 PM

Submitted By	Organization	Testifier Position	Present at Hearing
Jonathan Cender	Individual	Support	No

Comments:

Goal of bill is get food to students. Dept of Education already does that and has experience. Dept of Ag does not so it makes sense to have food program in Dept of Ed.

HB-767-HD-2

Submitted on: 3/17/2021 2:54:08 PM

Testimony for EDU on 3/19/2021 3:00:00 PM

Submitted By	Organization	Testifier Position	Present at Hearing
Diane Ware	Individual	Support	No

Comments:

Dear Chair and committee members,

I urge you to support this win win bill for children, their health and farmers including our AG economy.

mahalo nui,

Diane Ware 99-7815 Kapoha Volcano 96785

HB-767-HD-2

Submitted on: 3/17/2021 7:44:04 PM

Testimony for EDU on 3/19/2021 3:00:00 PM

Submitted By	Organization	Testifier Position	Present at Hearing
Wehi Nakano	Individual	Support	No

Comments:

Hello. My name is Wehi Nakano and I am kanaka maoli living on Kaua'i. As a mother of 3 boys, 2 whom are enrolled the school system, I fully support this bill. We live on the most richest soil on the earth and yet we import more goods than supporting our community farmers. If the COVID shutdown taught us anything it would be that we NEED to support our fellow farmers.

HB-767-HD-2

Submitted on: 3/17/2021 8:03:51 PM

Testimony for EDU on 3/19/2021 3:00:00 PM

Submitted By	Organization	Testifier Position	Present at Hearing
David Hubbard	Individual	Support	No

Comments:

This will help local agriculture, the DOE and our keiki! A win, win, win! Thank you for your time and consideration and doing your best for the people of Hawaii.

HB-767-HD-2

Submitted on: 3/17/2021 9:15:51 PM

Testimony for EDU on 3/19/2021 3:00:00 PM

Submitted By	Organization	Testifier Position	Present at Hearing
Laura Ramirez	Individual	Support	No

Comments:

Aloha,

Please support this bill that will provide Hawai'i's youth with access to nutritious, healthy food from their community. This will help students understand where their food comes from and how their food choices can impact their health, the environment, and their community.

This bill will also support local farmers financially and keep money within the community and save Hawai'i money by decreasing costs for school meal programs.

Mahalo!

HB-767-HD-2

Submitted on: 3/18/2021 9:24:16 AM

Testimony for EDU on 3/19/2021 3:00:00 PM

Submitted By	Organization	Testifier Position	Present at Hearing
Jessica Kuzmier	Individual	Support	No

Comments:

I support HB 443 and HB 767, two bills which support farm to school products. Many children rely on school meals for their daily nutrition, and having access to good quality food from our local farmers is an excellent way to offer this service. This experience can be used as an education tool to demonstrate to students the local ecology of our state as well, the basic measures of agriculture and what goes into food production, and a lesson on how to have agency in reducing our climate footprint and how our ordinary lives affect this issue. Please advance these issues, as fiduciary allocation is essential for either bill to move forward in committee. Mahalo.

HB-767-HD-2

Submitted on: 3/17/2021 10:23:54 PM

Testimony for EDU on 3/19/2021 3:00:00 PM

Submitted By	Organization	Testifier Position	Present at Hearing
denise woods	Individual	Support	No

Comments:

Aloha,

If we are serious about improving the health of our children, who are the future, and the health of the planet then measures such as HB767 must be supported. There is no downside to measures that will make the people of Hawaii healthier, provide more jobs, and reduce our carbon footprint. It matters to me that elected officials do more than just smile and talk nice, it is essential that they back up what they say but supporting bills like these.

Thank you,

Denise Woods RN

Kauai

HB-767-HD-2

Submitted on: 3/18/2021 7:10:55 AM

Testimony for EDU on 3/19/2021 3:00:00 PM

Submitted By	Organization	Testifier Position	Present at Hearing
Marion Paul	Individual	Support	No

Comments:

HB 767 will create a win-win, for our students' health and for our local farmers. It will create jobs and boost the agricultural sectors. It will help us diversify our economy and become more sustainable.

HB-767-HD-2

Submitted on: 3/18/2021 7:21:09 AM

Testimony for EDU on 3/19/2021 3:00:00 PM

Submitted By	Organization	Testifier Position	Present at Hearing
Nathan Leo Braulick	Individual	Support	No

Comments:

March 18, 2021

Members of the Committee:

I support HB767 which will move the Hawai'i Farm to School program from the Department of Agriculture to the Department of Education, and establish a programmatic goal for the DOE that at least 30% of food served in public schools shall consist of locally sourced products by 2030.

The benefits of **Farm to School** programs include:

- providing Hawai'i's youth with access to nutritious, healthy food from their community
- helping students understand where their food comes from and how their food choices can impact their health, the environment, and their community
- developing community pride and food security
- supporting local farmers financially and keep money within the community
- saving Hawai'i money by decreasing costs for school meal programs
- reducing carbon emissions and packaging waste from shipping

Sincerely,

Nathan Leo Braulick

2333 Kapiolani Blvd., #1604

Honolulu, HI 96826

HB-767-HD-2

Submitted on: 3/18/2021 7:24:58 AM

Testimony for EDU on 3/19/2021 3:00:00 PM

Submitted By	Organization	Testifier Position	Present at Hearing
Robert Fontana	Individual	Support	No

Comments:

I support this bill for the same reasons I support HB443: the more locally grown food we can supply out keiki, the better it is for them and for our local farmers. Please pass this bill. Thank you.

HB-767-HD-2

Submitted on: 3/18/2021 7:31:57 AM

Testimony for EDU on 3/19/2021 3:00:00 PM

Submitted By	Organization	Testifier Position	Present at Hearing
Lisa Galloway	Individual	Support	No

Comments:

School meals should not be a joke. As an educator, I know students will learn better, and therefore be better able to serve themselves and others as adults, if we feed their body and brain well. The Farm to School Program helps achieve this goal. Please pass this bill.

Mahalo for your consideration and service to us.

HB-767-HD-2

Submitted on: 3/16/2021 10:25:47 AM

Testimony for EDU on 3/19/2021 3:00:00 PM

Submitted By	Organization	Testifier Position	Present at Hearing
Ruta Jordans	Individual	Support	No

Comments:

Critically important to use more local food. Please support.

HB-767-HD-2

Submitted on: 3/18/2021 7:36:32 AM

Testimony for EDU on 3/19/2021 3:00:00 PM

Submitted By	Organization	Testifier Position	Present at Hearing
Anne	Individual	Support	No

Comments:

The reairement that at least 30% of the food served in public schools should consist of locally sourced products is an important step toward food sustainability and better health for Hawaii's children. I support this bill strongly.

HB-767-HD-2

Submitted on: 3/18/2021 7:52:14 AM

Testimony for EDU on 3/19/2021 3:00:00 PM

Submitted By	Organization	Testifier Position	Present at Hearing
Lorn Hoku Douglas	Individual	Support	No

Comments:

As a mentor in a local high school I was appalled by the garbage they were serving to the students. All imported processed foods. Lets start teaching about nutrition by example in our schools!

HB-767-HD-2

Submitted on: 3/18/2021 8:11:24 AM

Testimony for EDU on 3/19/2021 3:00:00 PM

Submitted By	Organization	Testifier Position	Present at Hearing
Patrick Switzer	Individual	Support	No

Comments:

This makes a lot of sense to move control of the program to DOE. By pulling, instead of pushing, it should be easier to hit the targets and keep the accountability on the branch of government that is actually serving the food.

HB-767-HD-2

Submitted on: 3/17/2021 3:45:40 PM

Testimony for EDU on 3/19/2021 3:00:00 PM

Submitted By	Organization	Testifier Position	Present at Hearing
Lynne Caraway	Individual	Support	No

Comments:

Locally sourced food should always be the priority. This is only a start.

HB-767-HD-2

Submitted on: 3/18/2021 8:40:19 AM

Testimony for EDU on 3/19/2021 3:00:00 PM

Submitted By	Organization	Testifier Position	Present at Hearing
Bradford Baang	Individual	Support	No

Comments:

I strongly encourage our leaders to support HB767. Food self sufficiency, food security, the need for our keiki to have good nutrition and to avoid very costly future ill effects of bad nutrition, and in support of our local small farmers to provide quality fresh foods, please support our goals for a better, healthier Hawaii. Pass HB767.

HB-767-HD-2

Submitted on: 3/18/2021 8:46:01 AM

Testimony for EDU on 3/19/2021 3:00:00 PM

Submitted By	Organization	Testifier Position	Present at Hearing
Jeannine Johnson	Individual	Support	No

Comments:

I support HB767HD2 that establishes that at least thirty percent of the food served in public schools shall consist of locally sourced products. We have to support our local farmers and we have to feed our keiki the best food that we can. This is a win-win. Mahalo for your support.

HB-767-HD-2

Submitted on: 3/18/2021 8:46:41 AM

Testimony for EDU on 3/19/2021 3:00:00 PM

Submitted By	Organization	Testifier Position	Present at Hearing
Valerie Weiss	Individual	Support	No

Comments:

Let's feed our kids right. Let's support our local farmers by establishing at least 30% of food in our public schools is locally grown.

HB-767-HD-2

Submitted on: 3/18/2021 8:55:56 AM

Testimony for EDU on 3/19/2021 3:00:00 PM

Submitted By	Organization	Testifier Position	Present at Hearing
Richard Janik	Individual	Support	No

Comments:

This will increase self reliance

HB-767-HD-2

Submitted on: 3/18/2021 9:15:37 AM

Testimony for EDU on 3/19/2021 3:00:00 PM

Submitted By	Organization	Testifier Position	Present at Hearing
Marjorie Bonar	Individual	Support	No

Comments:

This bill both improves nutrition but also keeps farmers and processors local

HB-767-HD-2

Submitted on: 3/15/2021 4:15:59 PM

Testimony for EDU on 3/19/2021 3:00:00 PM

Submitted By	Organization	Testifier Position	Present at Hearing
Victoria Anderson	Individual	Support	No

Comments:

Please pass this bill!

HB-767-HD-2

Submitted on: 3/17/2021 2:40:18 PM

Testimony for EDU on 3/19/2021 3:00:00 PM

Submitted By	Organization	Testifier Position	Present at Hearing
B.A. McClintock	Individual	Support	No

Comments:

Please support this important bill.

HB-767-HD-2

Submitted on: 3/18/2021 9:24:29 AM

Testimony for EDU on 3/19/2021 3:00:00 PM

Submitted By	Organization	Testifier Position	Present at Hearing
John Fitzpatrick	Individual	Support	No

Comments:

Aloha,

I strongly support this bill because it asks the DOE to get 30% of its food for our keiki from local farmers. This delivers more nutritious food to our students and supports our local farmers and economy. We need to find ways to keep state money from tourism recirculating within Hawaii and this does that.

Mahalo,

Fitz

HB-767-HD-2

Submitted on: 3/18/2021 9:36:13 AM

Testimony for EDU on 3/19/2021 3:00:00 PM

Submitted By	Organization	Testifier Position	Present at Hearing
Noreen Dougherty	Individual	Support	No

Comments:

House Representatives,

This bill is extremely important and should have been proposed long ago. The importance of quality local food can not be overstated. A clear look at the cost and quality of current lunches is wise. As a parent and educator of young children I am Strongly in Favor of passing this bill.

Mahalo,

Noreen Dougherty

Kapaa, Kauai

HB-767-HD-2

Submitted on: 3/18/2021 9:43:02 AM

Testimony for EDU on 3/19/2021 3:00:00 PM

Submitted By	Organization	Testifier Position	Present at Hearing
Keiko Gonzalez	Individual	Support	No

Comments:

Aloha,

We talk about supporting local businesses and becoming more food sustainable. We can do both with this legislation, besides feeding our keiki fresher food. Please support this measure, as I do.

Mahalo,

Keiko

HB-767-HD-2

Submitted on: 3/17/2021 4:31:29 PM

Testimony for EDU on 3/19/2021 3:00:00 PM

Submitted By	Organization	Testifier Position	Present at Hearing
Patricia Blair	Individual	Support	No

Comments:

Great idea. Support!

HB-767-HD-2

Submitted on: 3/17/2021 6:08:44 PM

Testimony for EDU on 3/19/2021 3:00:00 PM

Submitted By	Organization	Testifier Position	Present at Hearing
alicia morrier	Individual	Support	No

Comments:

I am in great support for this bill.

HB-767-HD-2

Submitted on: 3/17/2021 6:19:49 PM

Testimony for EDU on 3/19/2021 3:00:00 PM

Submitted By	Organization	Testifier Position	Present at Hearing
Sherry Pollack	Individual	Support	No

Comments:

Please support this important bill.

HB-767-HD-2

Submitted on: 3/17/2021 6:37:14 PM

Testimony for EDU on 3/19/2021 3:00:00 PM

Submitted By	Organization	Testifier Position	Present at Hearing
Jessica dos Santos	Individual	Support	No

Comments:

I strongly support HB767.

HB-767-HD-2

Submitted on: 3/18/2021 6:34:13 AM

Testimony for EDU on 3/19/2021 3:00:00 PM

Submitted By	Organization	Testifier Position	Present at Hearing
John NAYLOR	Individual	Support	No

Comments:

Strong support!

HB-767-HD-2

Submitted on: 3/18/2021 7:40:34 AM

Testimony for EDU on 3/19/2021 3:00:00 PM

Submitted By	Organization	Testifier Position	Present at Hearing
Judith Perino	Individual	Support	No

Comments:

Long overdue! YES on this bill!

HB-767-HD-2

Submitted on: 3/18/2021 9:49:52 AM

Testimony for EDU on 3/19/2021 3:00:00 PM

Submitted By	Organization	Testifier Position	Present at Hearing
Alice Terry	Individual	Support	No

Comments:

This is a great first step in supporting local food producers as our state works to become more self-sustainable. Providing locally grown food in schools is a great educational opportunity for keiki about our local food systems.

HB-767-HD-2

Submitted on: 3/18/2021 7:54:35 AM

Testimony for EDU on 3/19/2021 3:00:00 PM

Submitted By	Organization	Testifier Position	Present at Hearing
Rexann Dubiel	Individual	Support	No

Comments:

Fresh food equals a more healthy body.

Support our children and local farmers!

HB-767-HD-2

Submitted on: 3/18/2021 8:18:19 AM

Testimony for EDU on 3/19/2021 3:00:00 PM

Submitted By	Organization	Testifier Position	Present at Hearing
Kate Paine	Individual	Support	No

Comments:

Expand health mandates 'round the islands and support our ecosystem.

HB-767-HD-2

Submitted on: 3/18/2021 8:46:17 AM

Testimony for EDU on 3/19/2021 3:00:00 PM

Submitted By	Organization	Testifier Position	Present at Hearing
Melissa Barker	Individual	Support	No

Comments:

Honorable House Members,

Please support HB767.

Thank you!

HB-767-HD-2

Submitted on: 3/18/2021 8:52:14 AM

Testimony for EDU on 3/19/2021 3:00:00 PM

Submitted By	Organization	Testifier Position	Present at Hearing
Elizabeth Hansen	Individual	Support	No

Comments:

Please support this bill.

Mahalo.

HB-767-HD-2

Submitted on: 3/18/2021 9:26:08 AM

Testimony for EDU on 3/19/2021 3:00:00 PM

Submitted By	Organization	Testifier Position	Present at Hearing
Sanford Yee	Individual	Support	No

Comments:

I support HB 767.

HB-767-HD-2

Submitted on: 3/18/2021 8:57:57 AM

Testimony for EDU on 3/19/2021 3:00:00 PM

Submitted By	Organization	Testifier Position	Present at Hearing
Rodger Hansen	Individual	Support	No

Comments:

Please support this bill.

Your consideration is appreciated.

HB-767-HD-2

Submitted on: 3/18/2021 9:11:50 AM

Testimony for EDU on 3/19/2021 3:00:00 PM

Submitted By	Organization	Testifier Position	Present at Hearing
robin knox	Individual	Support	No

Comments:

support

HB-767-HD-2

Submitted on: 3/18/2021 9:31:53 AM

Testimony for EDU on 3/19/2021 3:00:00 PM

Submitted By	Organization	Testifier Position	Present at Hearing
minda goodman	Individual	Support	No

Comments:

I support cooperations to create pono systems.

HB-767-HD-2

Submitted on: 3/18/2021 9:56:55 AM

Testimony for EDU on 3/19/2021 3:00:00 PM

Submitted By	Organization	Testifier Position	Present at Hearing
Jane E Arnold	Individual	Support	No

Comments:

By increasing the amount of locally grown in student meals, this bill would help local farmers and make Hawaii more self-sufficient.

HB-767-HD-2

Submitted on: 3/18/2021 10:07:22 AM

Testimony for EDU on 3/19/2021 3:00:00 PM

Submitted By	Organization	Testifier Position	Present at Hearing
lisa insalata	Individual	Support	No

Comments:

Kids need to learn the value of island grown food. It is a win win. Nutritionally, economically, and environmentally.

Mahalo

HB-767-HD-2

Submitted on: 3/18/2021 10:19:40 AM

Testimony for EDU on 3/19/2021 3:00:00 PM

Submitted By	Organization	Testifier Position	Present at Hearing
Danelle Guion	Individual	Support	No

Comments:

I support HB767 to establish a programmatic goal for the DOE that at least 30% of the food served in public schools shall consist of locally sourced products in order to boost and maintain our economy in Hawaii, minimize transport of food from long distances cutting down on cost and greenhouse gases, and promoting healthy nutrition gained from eating fresher, more nutritious food.

HB-767-HD-2

Submitted on: 3/18/2021 10:59:30 AM

Testimony for EDU on 3/19/2021 3:00:00 PM

Submitted By	Organization	Testifier Position	Present at Hearing
jade mcgaff	Individual	Support	No

Comments:

Please support agricultural learning for our children We could be the Organic Seed Capitol of the WORLD!.

HB-767-HD-2

Submitted on: 3/18/2021 11:15:10 AM

Testimony for EDU on 3/19/2021 3:00:00 PM

Submitted By	Organization	Testifier Position	Present at Hearing
Mark Enomoto	Individual	Support	No

Comments:

We should be feeding our keiki food that is nutritious and supports our local agriculture families. For many children, school is the only place where they receive a reliable source of nutrition and that nutrition should be the best our State can offer. School lunch has the stigma of being bad but a case in point is Wai'ala'e Public Charter School's cafeteria program which has "excellent" lunches and food all prepped on site. To this day, my daughter still talks about how good the lunches were at her elementary school. Nutrition classes were conducted by the Kokua Foundation and school gardens were a part of the normal curriculum that further exposed children to the source of their food and also to new foods that they otherwise might not get at home.

School lunch "is" a part of child's education and as such we should be serving the best we can offer.

HB-767-HD-2

Submitted on: 3/18/2021 11:17:00 AM

Testimony for EDU on 3/19/2021 3:00:00 PM

Submitted By	Organization	Testifier Position	Present at Hearing
Brian R Curll	Individual	Support	No

Comments:

Many children through grades one through 12 do not eat breakfast before they leave the house. A good and nutritious lunch will provide them with food energy and nutrients necessary to learn, to stay healthy, and to thrive. It's time for us to be smart enough to understand that Junk food does not have a place in our department of education.

HB-767-HD-2

Submitted on: 3/18/2021 12:12:29 PM

Testimony for EDU on 3/19/2021 3:00:00 PM

Submitted By	Organization	Testifier Position	Present at Hearing
Pauline Piliialoha Yap	Individual	Support	No

Comments:

The Department of Education would be the more appropriate department to oversee all aspects of our school aged children. Nutrition plays a vital role in the overall well being - physical and mental - of growing children. There also children whose only decent meal a day comes from their school lunch and it is of primary concern to provide them with the most nutritious meal possible. Local farm to table is the best option and educators, who work with these children day and day out, make far more sense as overseeres of this program than anyone else.

Pauline Yap, DVM

HB-767-HD-2

Submitted on: 3/18/2021 12:26:57 PM

Testimony for EDU on 3/19/2021 3:00:00 PM

Submitted By	Organization	Testifier Position	Present at Hearing
Mikyla Thomas	Individual	Support	No

Comments:

March 18, 2021

To : Chair Kidani, Vice Chair Kim, and members of the Senate Committee on Education

Chair Gabbard, Vice Chair Nishihara, and members of the Senate Committee on Agriculture and Environment

From: Mikyla Thomas

Strong Support for HB 767

Thank you for the opportunity to submit testimony in SUPPORT of HB 767 which will move the Farm to School program from the Department of Agriculture to the Department of Education and sets a groundbreaking procurement goal that at least 30% of food served in public schools shall consist of locally sourced products.

Aloha nui kakou,

My name is Mikyla Hi'ilani Thomas. In my 29 years of life, my neighborhoods have been Kuli'ou'ou, Wailuku, HÄ• na, PÄ• lolo, Kaunakakai and now Mililani. Because of these places I have a wide range of perspectives on local agriculture, food, health and education as it correlates to a population's self determination.

As a sustainable farmer and mother, I now have a better understanding of the shortcomings and opportunities of Hawai'i's diverse communities. I am a graduate of Hawai'i's Public School System and I stand before you exuding my general learner outcome of a community contributor. I also speak to you on behalf of my two children and the hundreds of thousands of keiki who are in the public school system today.

I realized at a young age that my education system and the food I was being served were decisions made for me by people from a far away place. These people viewed food as a fixed expense prioritizing the cheapest food with the

longest shelf life, because like any good business crunching numbers is key. When I was a teacher I saw how rare it was for public school students to eat fresh or local produce. A majority of my students were economically disadvantaged and by sharing something as basic as fresh fruits and vegetables, what I observed was quite interesting. Their chins lifted, their shoulders rolled back and their eyes lit up! They stood taller and it was clear that they felt valued and confident-- a prerequisite to all fruitful learning. The price of Hawai'i's children feeling valued through their food, is numerically unquantifiable.

Each year the DOE sends about 110 Million dollars to mainland food producers. If we can keep 1 third of this amount or \$33 million dollars circulating in Hawai'i, the DOE can support local food producers and build our children's relationships to local foods, their environment and culture. As teachers, parents and stakeholders who understand the critical role that nutrition plays in public health, behavior, attention spans and academic success, it should be our top priority to adopt the responsibility to adequately nourish Hawai'i's students. When we invest in local food production for local consumption we build the wellness and economic resilience of our State.

I support House Bill 767.

Mahalo for you time and consideration,

Mikyla Hi'ilani Thomas

HB-767-HD-2

Submitted on: 3/18/2021 12:26:31 PM

Testimony for EDU on 3/19/2021 3:00:00 PM

Submitted By	Organization	Testifier Position	Present at Hearing
Max Towey	Individual	Support	No

Comments:

I support this.

HB-767-HD-2

Submitted on: 3/18/2021 12:37:41 PM

Testimony for EDU on 3/19/2021 3:00:00 PM

Submitted By	Organization	Testifier Position	Present at Hearing
Momi Ventura	Individual	Support	No

Comments:

Alohamai My Name Is R.Momi Ventura, This Is A Very Important Bill Only Because Hawai'i School's Need To Have A Continuous And A Consistent Foid Flowing Throughout All Of Hawai'i's School's. Fresh Organically Grown Foods Have Certainly Made Costs Go Down And Morales Go Straight Up. Strengthening Our Home Grown Foods Programs Are A Beautiful Transition To Self-Care, Sufficiency And Certain Pride In Knowing The Students Grew Their Very Own Lunches.. Thank You Mahalomai, Please Support HB767

HB-767-HD-2

Submitted on: 3/18/2021 12:59:00 PM

Testimony for EDU on 3/19/2021 3:00:00 PM

Submitted By	Organization	Testifier Position	Present at Hearing
Becky Gardner	Individual	Support	No

Comments:

I strongly support this bill.

Nutrition cannot be underestimated. So many educational opportunities with this approach. It is also quite impactful for young, developing minds to engage in the process of gardening and harvesting. It helps us all learn to appreciate and be mindful of what we put inside our bodies. I also love how this encourages local food production and increasing food security.

This seems like an initiative that Hawaii's DOE can really excel at.

HB-767-HD-2

Submitted on: 3/18/2021 1:07:09 PM

Testimony for EDU on 3/19/2021 3:00:00 PM

Submitted By	Organization	Testifier Position	Present at Hearing
Catherine Ishida	Individual	Support	No

Comments:

Although mandating a numerical goal in legislation may be problematic in the long run, prioritizing locally sourced products and food grown by students themselves would benefit student health and learning, and the local economy.

HB-767-HD-2

Submitted on: 3/18/2021 1:26:12 PM

Testimony for EDU on 3/19/2021 3:00:00 PM

Submitted By	Organization	Testifier Position	Present at Hearing
Daniel Bishop	Individual	Support	No

Comments:

I, Daniel Bishop am in Strong Support of HB767

Mahalo

Daniel Bishop

HB-767-HD-2

Submitted on: 3/18/2021 1:30:36 PM

Testimony for EDU on 3/19/2021 3:00:00 PM

Submitted By	Organization	Testifier Position	Present at Hearing
Shannon Rudolph	Individual	Support	No

Comments:

Support

HB-767-HD-2

Submitted on: 3/18/2021 1:34:32 PM

Testimony for EDU on 3/19/2021 3:00:00 PM

Submitted By	Organization	Testifier Position	Present at Hearing
joan Levy	Individual	Support	No

Comments:

supporting local food supports the whole Hawaiian economy. plus teaches children the importance of localization of usage.

HB-767-HD-2

Submitted on: 3/18/2021 1:41:34 PM

Testimony for EDU on 3/19/2021 3:00:00 PM

Submitted By	Organization	Testifier Position	Present at Hearing
Anita Cook	Individual	Support	No

Comments:

To whom it may concern

We strongly support this bill that states **at least thirty percent of the food served in public schools shall consist of locally sourced products.**

It is a step in the right direction in making Hawaii food independent. Having the keiki involved means education about food starts early.

respectfully

anita and tommy cook

HB-767-HD-2

Submitted on: 3/18/2021 2:09:13 PM

Testimony for EDU on 3/19/2021 3:00:00 PM

Submitted By	Organization	Testifier Position	Present at Hearing
James E Raymond	Individual	Support	No

Comments:

Please help our procurement professionals to do the right thing and buy local food.

HB-767-HD-2

Submitted on: 3/18/2021 2:14:30 PM

Testimony for EDU on 3/19/2021 3:00:00 PM

Submitted By	Organization	Testifier Position	Present at Hearing
Emma Broderick	Individual	Support	No

Comments:

The Hawai'i DOE is in a unique position to dramatically impact the health of Hawai'i's children as well as Hawai'i's food systems through a conscious effort to support local, sustainable production of food. Now is the time to make good on the farm to school program and to assure that tangible benefits are felt by our children and our communities working to grow food locally.

LATE

HB-767-HD-2

Submitted on: 3/18/2021 3:06:24 PM

Testimony for EDU on 3/19/2021 3:00:00 PM

Submitted By	Organization	Testifier Position	Present at Hearing
Sherrie Orr	Individual	Support	No

Comments:

I support HB767. All food served to students should offer the utmost in nutritional value. All efforts should be made to offer a minimum of 30% locally grown, harvested and produced food.

85-90% of all food consumed in Hawaii is shipped ~ greatly affecting Hawaii's fragile environment conditions. ONLY 15% of our agricultural products are grown in Hawaii.

Six million pounds of food are shipped to Hawaii daily. It should be extremely evident to all who witnessed the tragic situation of 2020 and Covid-19 that immediate danger of food security is a threat to the State. Each hurricane and dock strike has shown us the result of shipping delays and puts the State in dangerous possibly life threatening peril.

Currently Hawaii has a supply of fresh produce for no more than TEN days. It is our responsibility to make use of all the natural elements and the 365day/year growing season of these islands. Clean irrigation water is available in abundance.

Sherrie Orr