

FROM THE OFFICE OF
SENATOR STANLEY CHANG
East Honolulu Community Newsletter

SEPTEMBER 2018



Get Prepared for the Next Hurricane

Although Hurricane Lane has come and gone, we are still in the middle of hurricane season, and other storms may threaten Hawaii in the future. Please take the time now to prepare for your family, business, and property **BEFORE** a hurricane hazard affects your area:

Develop a family and business emergency plan

- Transportation readiness
- Evacuation routes/timing
- Securement of homes, business, and property
- Care of pets and animals

Prepare a home survival kit

- Be ready to cope with loss of water, electricity, gas, and telephone services

Prepare an evacuation kit

- Be prepared to evacuate before the danger arrives

Stay calm, stay alert, and stay informed

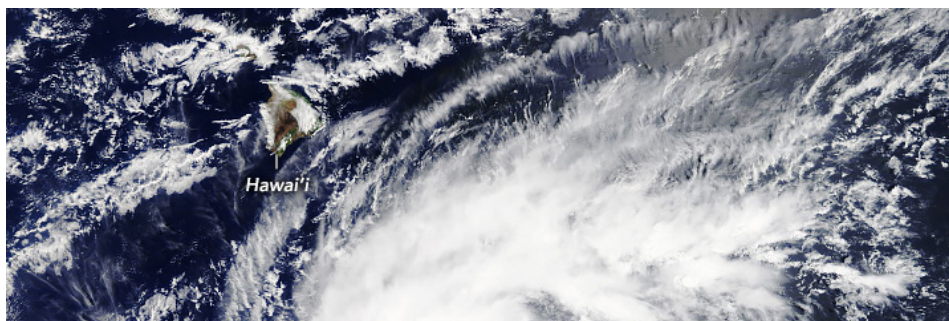
- Listen to your local radio stations for official announcements by Civil Defense and the National Weather Service

Caregivers and kupuna need to have a detailed disaster plan that involves creating a support network of neighbors and friends. Caregivers of people with dementia should have more than one person to watch over a loved one to help keep them calm and to make sure they don't wander away. Include a two-week supply of needed medication. Include extra eyeglasses and hearing aids in your emergency kit, along with extra batteries for battery-operated medical or assistive technology devices.

Hawaii's hurricane season begins **June 1** and runs until **November 30**.

For more information on hurricane preparedness:

nhc.noaa.gov/prepare/ready.php



Source: NASA

▶ CALL US

808-586-8420

▶ EMAIL US

Stanley Chang

Senator, District 9 (D)
senchang@capitol.hawaii.gov

Adrian Tam

Office Manager
a.tam@capitol.hawaii.gov

Jessica Sato

Newsletter Editor
jessato@gmail.com

▶ HANDY CONTACTS

State Pothole Hotline

808-586-7852

City Pothole Hotline

808-768-7777

State Homelessness

gov.homelessness@Hawaii.gov
808-586-0193

City Homelessness

complaints@honolulu.gov
808-768-4381

Abandoned Vehicles

808-733-2530

Building Permit

808-768-5555

Trash Collection

808-768-3200

Street Light Repair

808-768-5300

IN THE COMMUNITY



JCI BANQUET

August 25, 2018 ▲ Senator Chang attended the JCI (Junior Chamber International) Hawai'i banquet, celebrating 75 years of the Hawai'i Jaycees' service and leadership in our community.

COUNCILLOR IAIN BOTT

July 29, 2018 ▲ Senator Chang greeted Councillor Iain Bott from the City of Westminster, London, United Kingdom, on his visit to Hawai'i.



Give Blood. It's Safe. It's Simple. It Saves Lives.

The Blood Bank of Hawaii needs blood donations. Hospitals depend on blood donations daily, and about **200 blood donors** are needed daily to help meet those needs.

If you are interested in donating blood, please visit the Young Street Donor Center:

1907 Young Street
6:30am to 6:30pm Monday to Thursday
6:30am to 4:30pm Friday to Sunday

To schedule an appointment or if you have any questions regarding donating blood, please call **808-848-4770** or go online at **bbh.org**.

FOR YOUR INFORMATION

Neighborhood Repairs Update

- 1. Kealaula Kai Sidewalks (Hawaii Kai)**
The sidewalks are scheduled for reconstruction in September 2018.
- 2. Kealaolu Street (Kahala)**
Resurfacing is scheduled for completion by December 2018.
- 3. Monsarrat Avenue between Kalakaua Avenue and Paki Avenue (Diamond Head)**
Resurfacing plans are underway, and work is scheduled for completion by December 2018.
- 4. Monsarrat Avenue between Paki Avenue and Diamond Head Road fronting Kapiolani Community College; Diamond Head Road (Diamond Head)**
The Board of Water Supply construction project along the identified portion of Monsarrat Avenue is scheduled for 2021. However, due to poor conditions, a temporary repavement of the area will be done near the end of the year.



Kealaolu Street

Same Day Voter Registration

This year, for the first time in Hawai'i, you no longer need to register in advance to vote.

You can register to vote and cast your ballot at the same time on Election Day.

Whether you're not a registered voter, you can show up at your polling place, and you will be able to vote.

The State Legislature passed HB 2590 in 2014, allowing voters to register to vote at polling places on Election Day and at early voting sites. It took effect this year for Election Day registration.

Hawai'i's voter turnout has declined steadily in recent years. **This past primary election, only 286,041 people—or 38.6 percent of registered voters—cast ballots.** Turnout in the 2014 primary election, the last gubernatorial primary election, was over 40 percent.

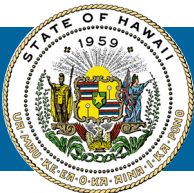
This trend is a direct affront to the democratic

process. When the people of Hawai'i don't participate in elections, that means a smaller and smaller minority will dictate the policies of our state.

Young people, renters, and the lower middle class are disproportionately underrepresented in the voter pool. That means the critical issues facing these demographic categories—affordable housing, good jobs, education—are the issues that go unaddressed year after year.

As a result, I strongly support efforts to increase voter participation in elections. This past legislative session, I proposed a bill for automatic voter registration, meaning that people will no longer need to register to vote separately. In conjunction with automatic all-mail voting, that means every Hawai'i eligible voter will receive an absentee ballot in the mail every year that they can fill out and drop into any mailbox. I also proposed a bill to de-link voter registration from jury participation, one of the most common concerns I hear from people who do not wish to register to vote.

East Honolulu has the highest voter participation in the entire state. Keep up the good work. If you have any further questions on how to vote, how to receive an absentee ballot, or the election process, please contact the Hawai'i Office of Elections at **elections.hawaii.gov** or **808-453-8683**.



FROM THE OFFICE OF
SENATOR STANLEY CHANG

Hawai'i State Capitol, Room 223
415 South Beretania Street
Honolulu, Hawai'i 96813