

Village Park – Kupuna Loop Sub-Area Corridor Study

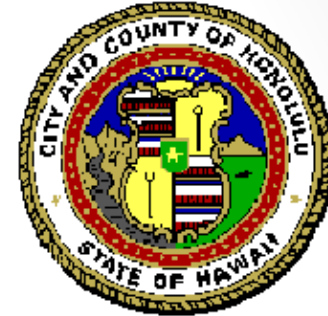
Village Park Community Association Annual Meeting
Wednesday, February 11, 2015
Hoaeae Park Community Center



PROJECT TEAM

City & County of Honolulu, Department of Transportation

- Layden Akasaki
- Craig Chung



SSFM International

- Mike Packard, Project Manager
- Nita Wolfgramm, Traffic Engineer
- Darin Leong, Civil Engineer

PROJECT PURPOSE/TASKS



Project Tasks

- Task 1:
Existing Traffic Operations
- Task 2:
Mitigative Measures
- Task 3:
Final Traffic Study

DATA COLLECTION

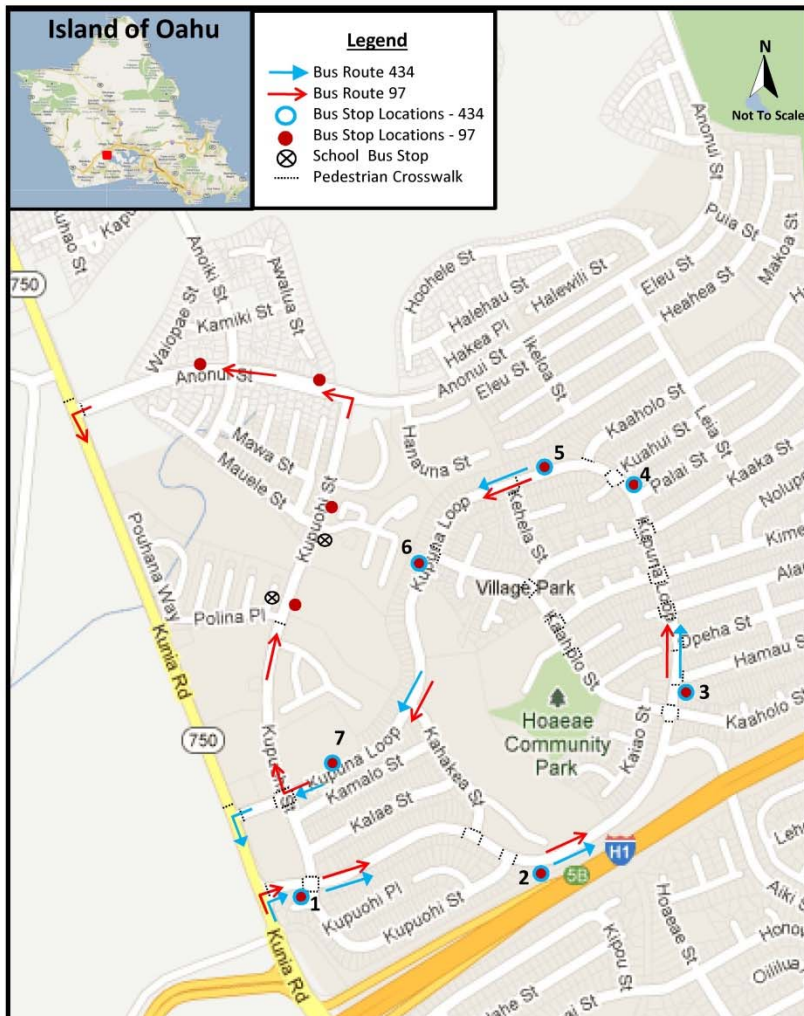


Figure 4: Bus Stop Locations Within Village Park

Village Park Corridor Study – Kunia, Hawaii

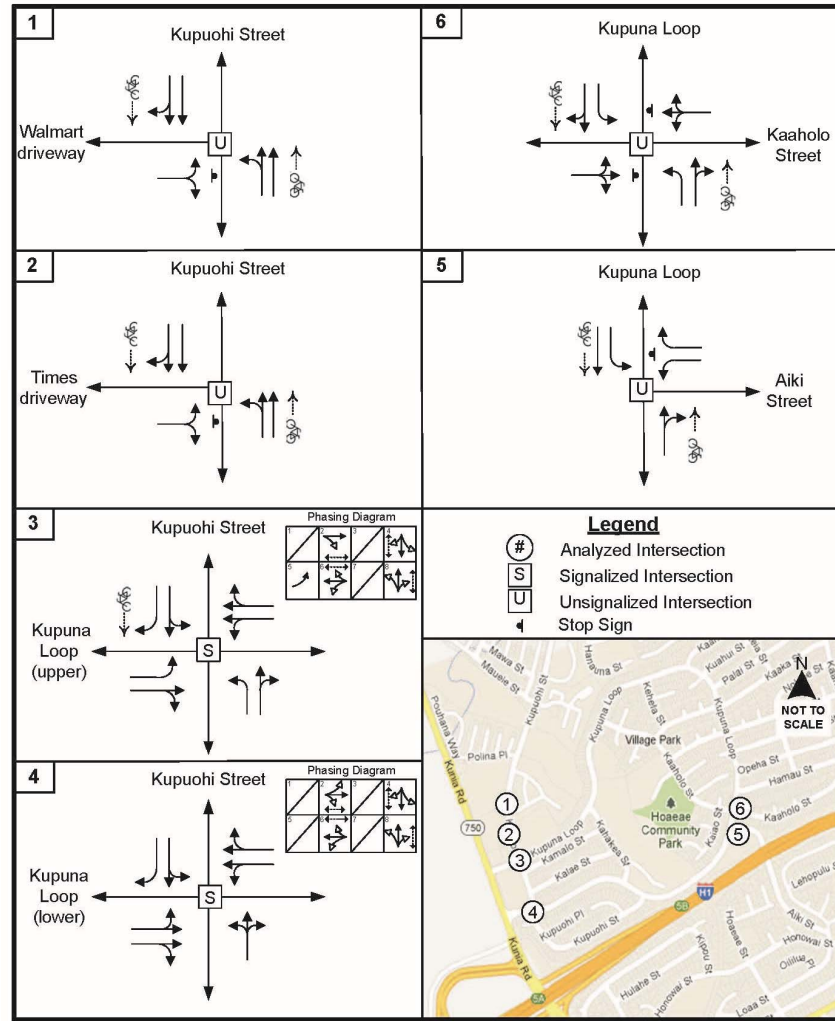
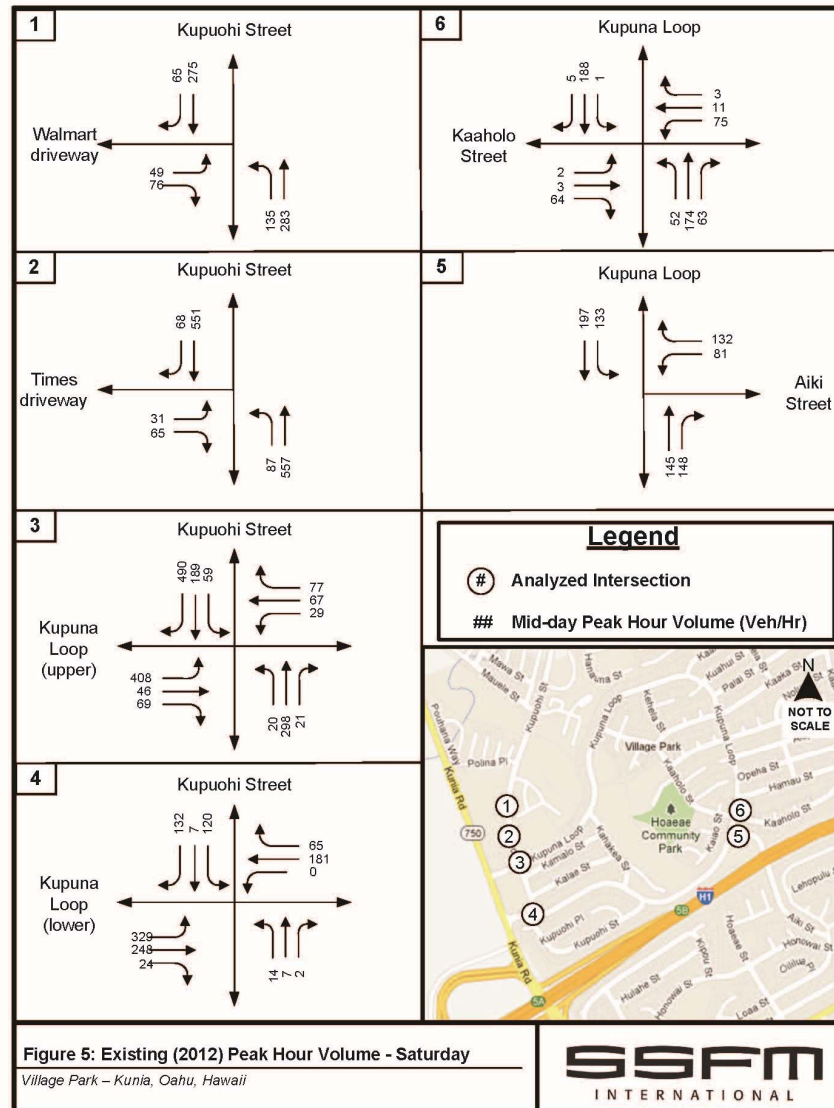
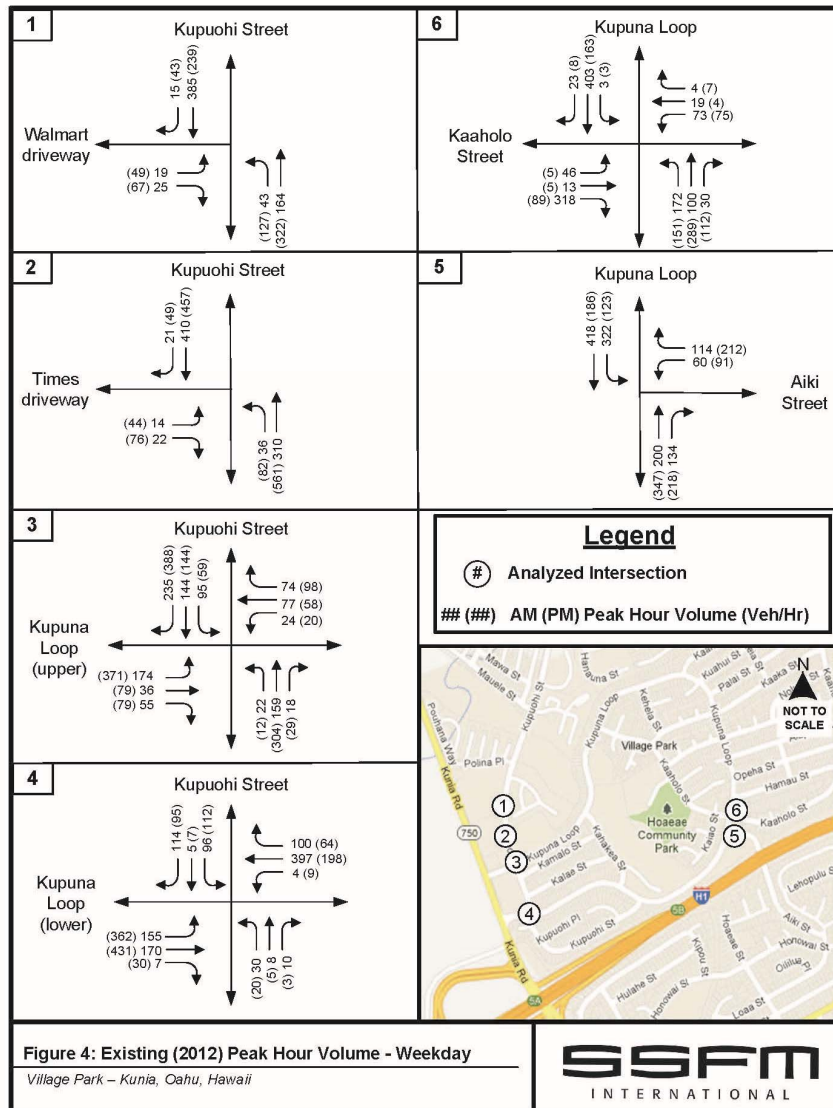


Figure 3: Existing (2012) Lane Configuration

Village Park – Kunia, Oahu, Hawaii



EXISTING CONDITIONS



WALK THROUGH



PROPOSED MITIGATION

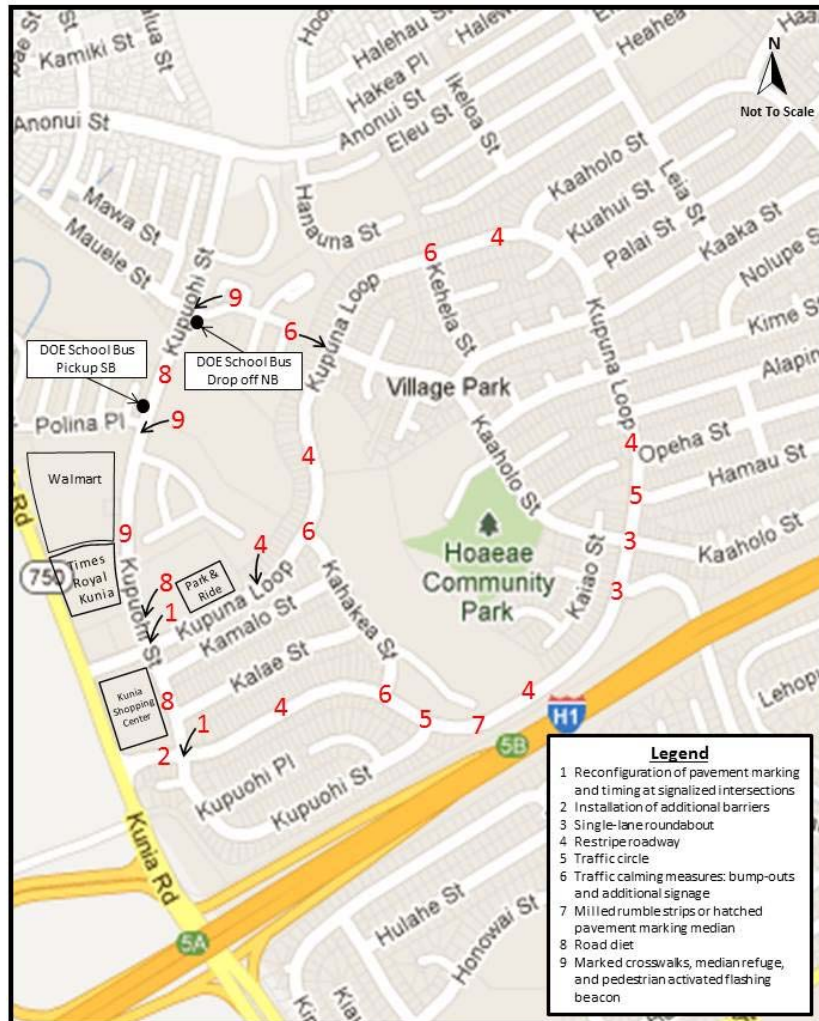


Figure 10: Village Park Mitigation Map

Village Park Corridor Study – Kunia, Hawaii

SSFM
INTERNATIONAL

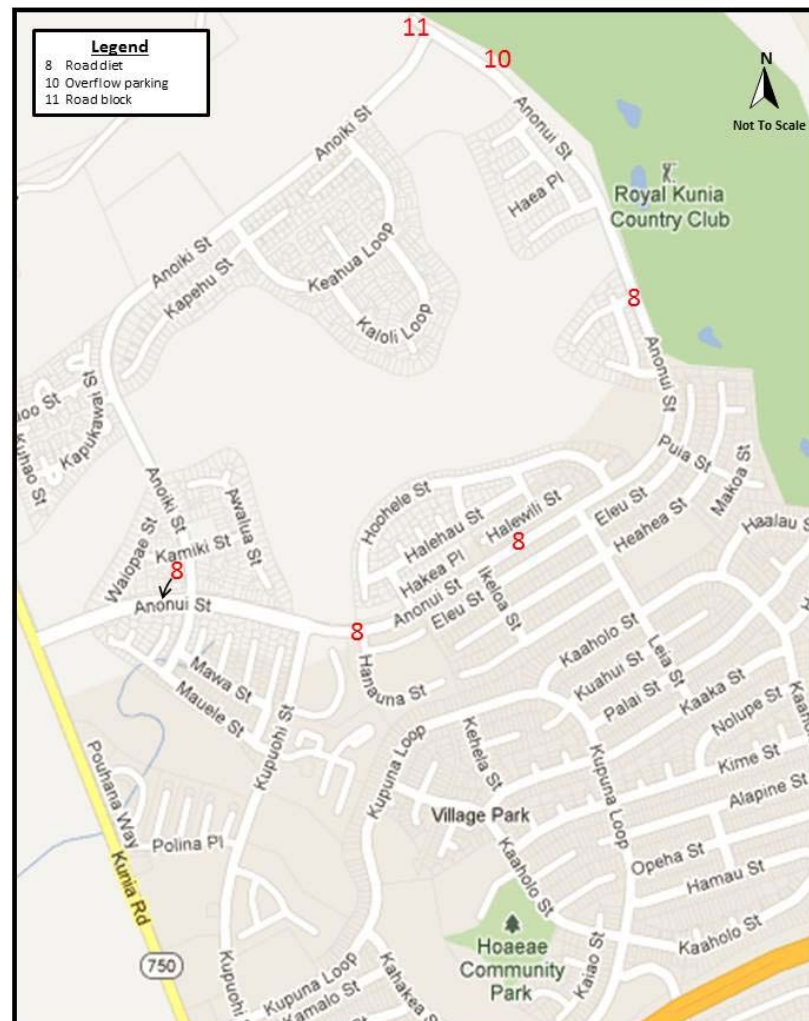


Figure 11: Royal Kunia Mitigation Map

Village Park Corridor Study – Kunia, Hawaii

SSFM
INTERNATIONAL

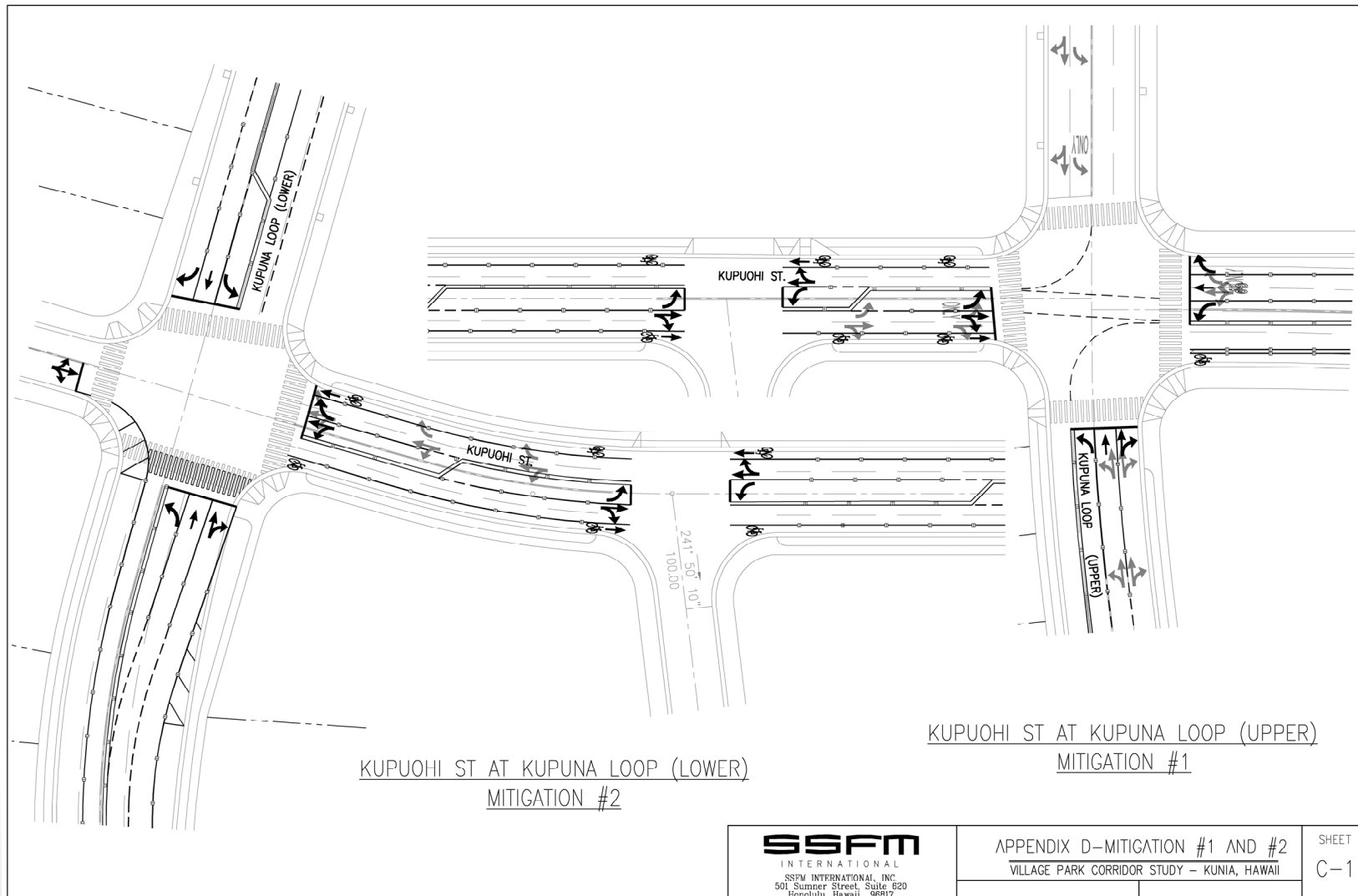
LOCATION - 1

Kupuohi at Kupuna



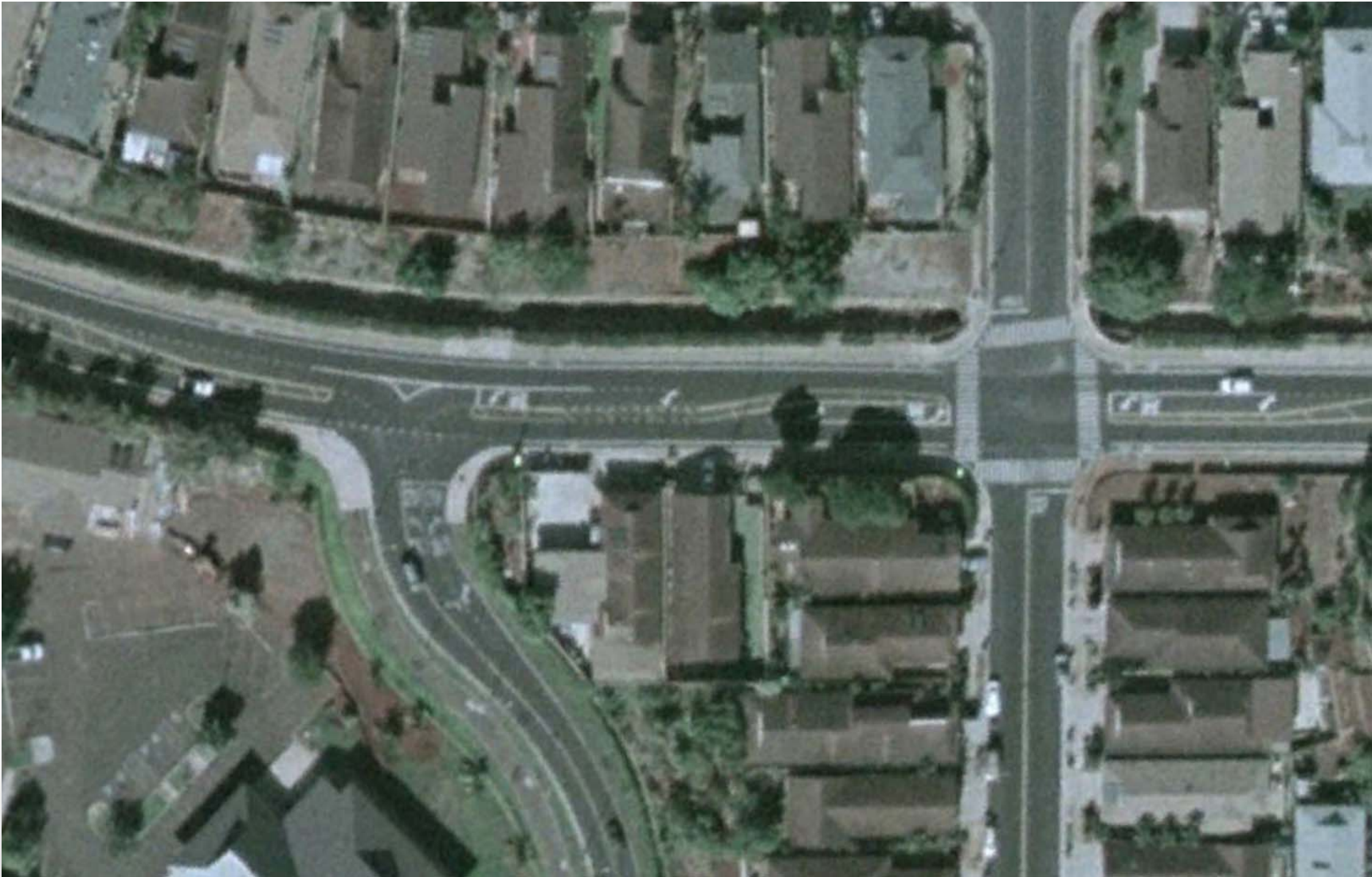
MITIGATION MEASURE - 1

Kupuohi at Kupuna



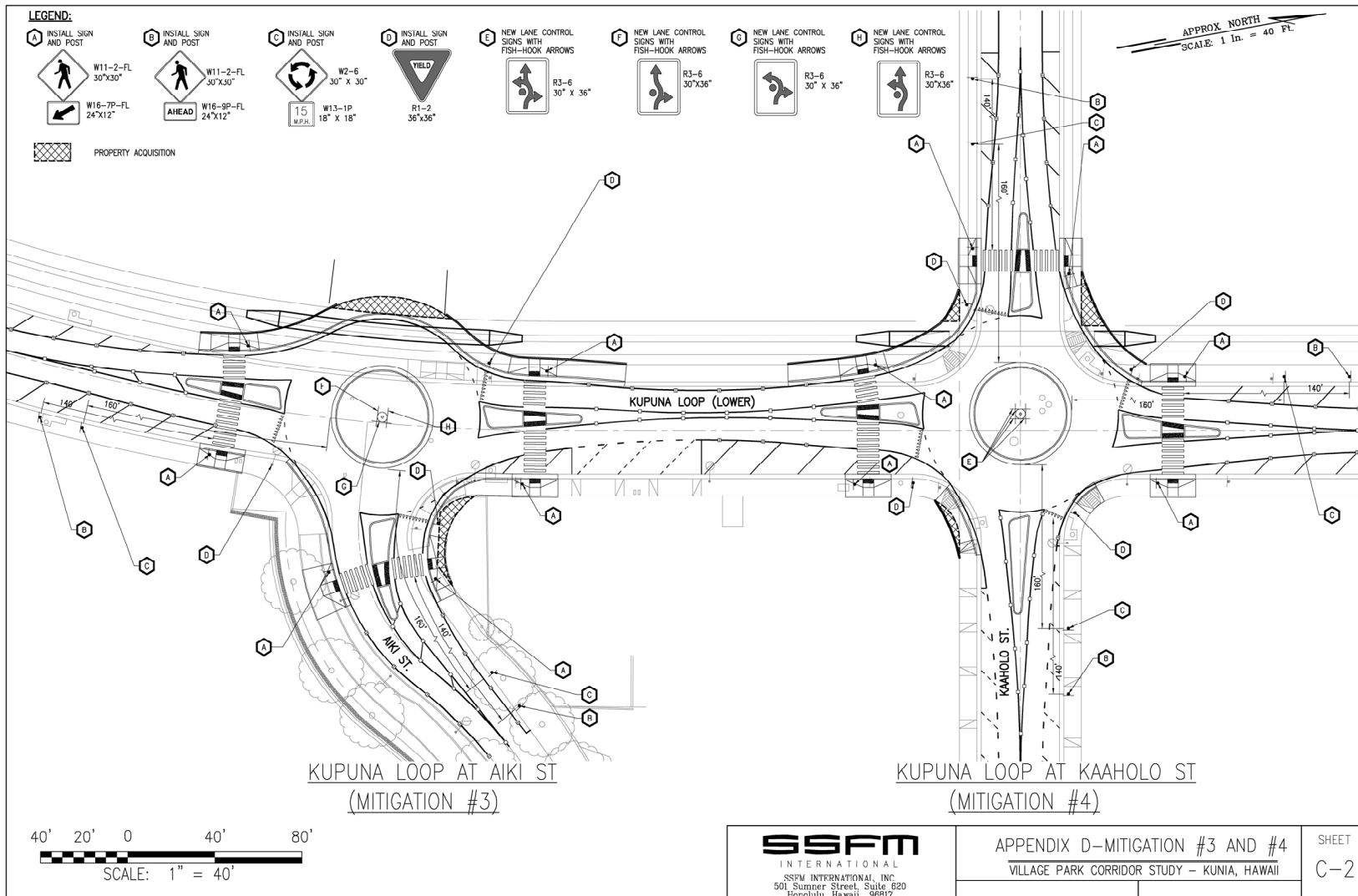
LOCATION – 2

Kupuna at Aiki/Kaaholo



MITIGATION MEASURE - 2

Kupuna at Aiki/Kaaholo



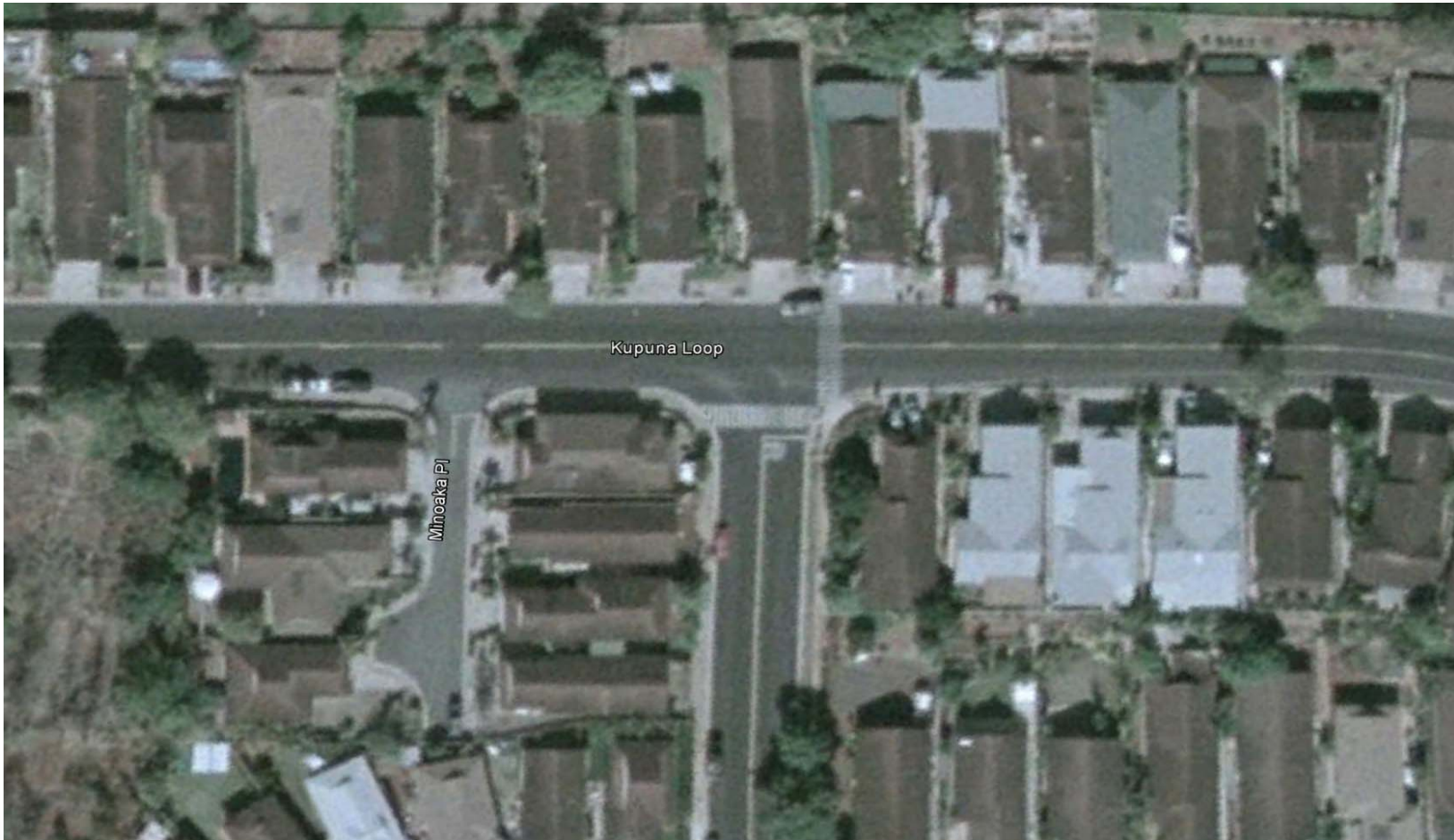
LOCATION – 3

Kupuna at Kupuohi



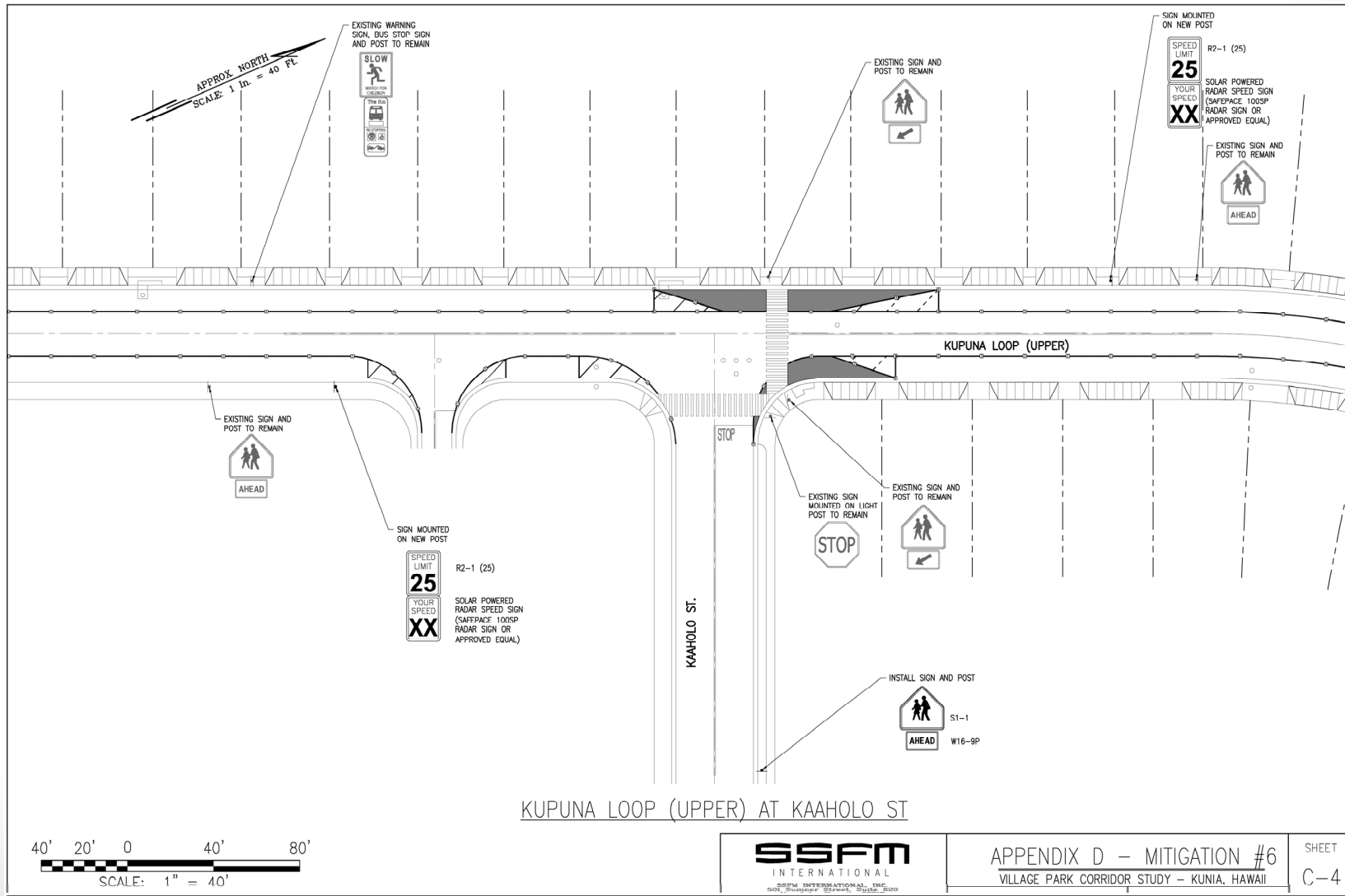
LOCATION – 4

Kupuna at Kaaholo



MITIGATION MEASURE - 4

Kupuna at Kaaholo



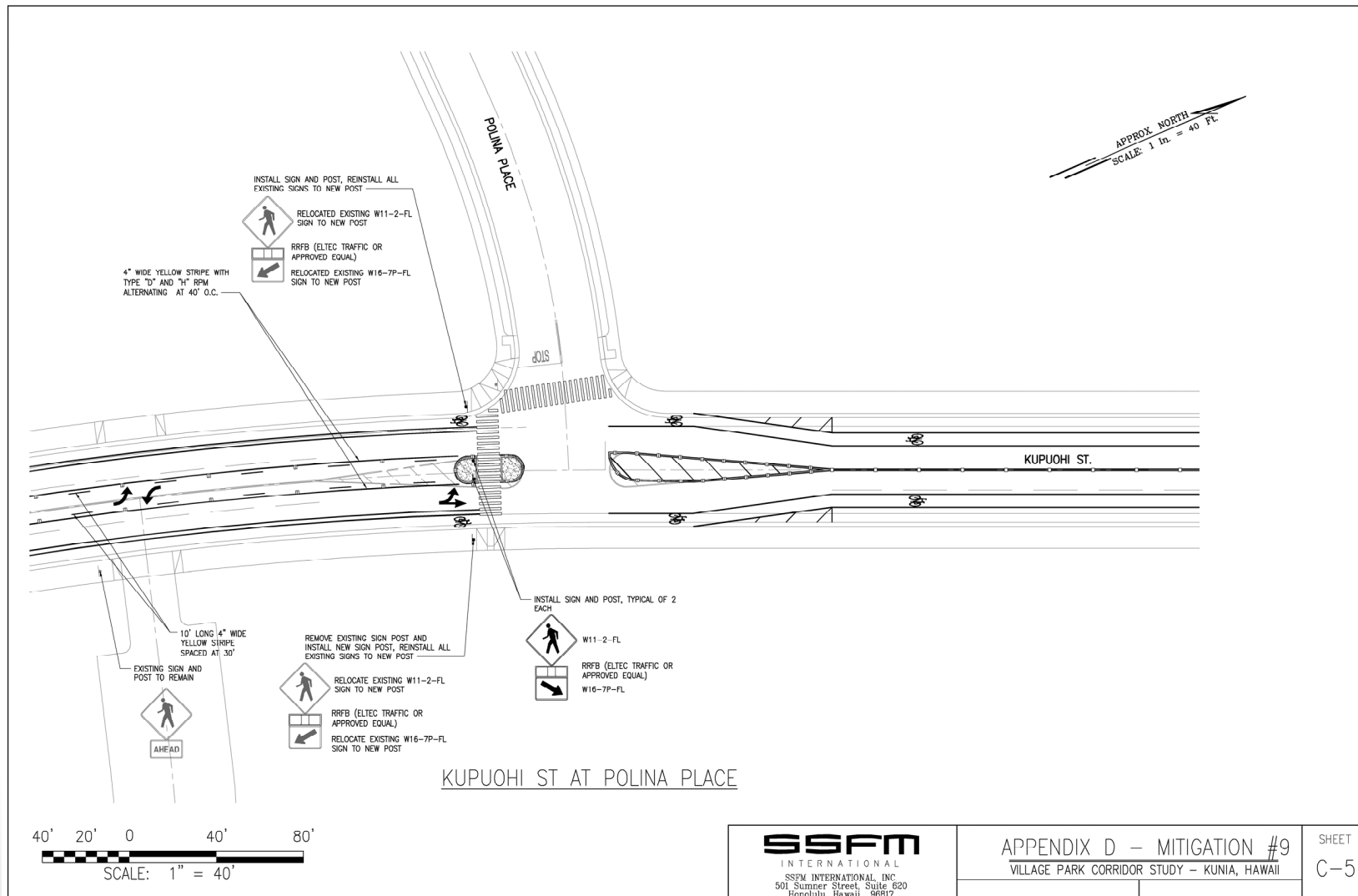
LOCATION – 5

Kupuohi and Polina

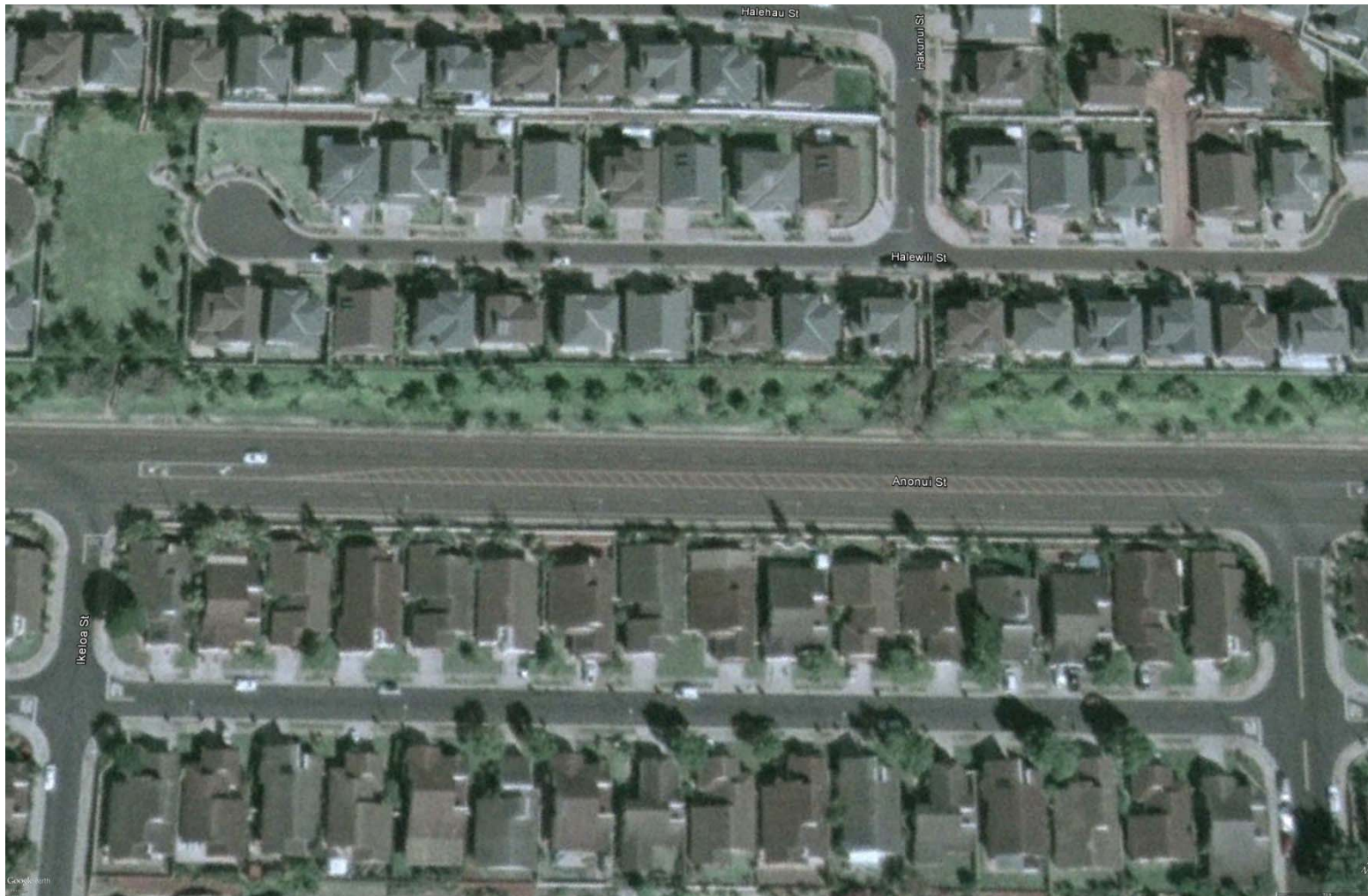


MITIGATION MEASURE – 5

Kupuohi and Polina



ANONUI STREET



ANONUUI STREET

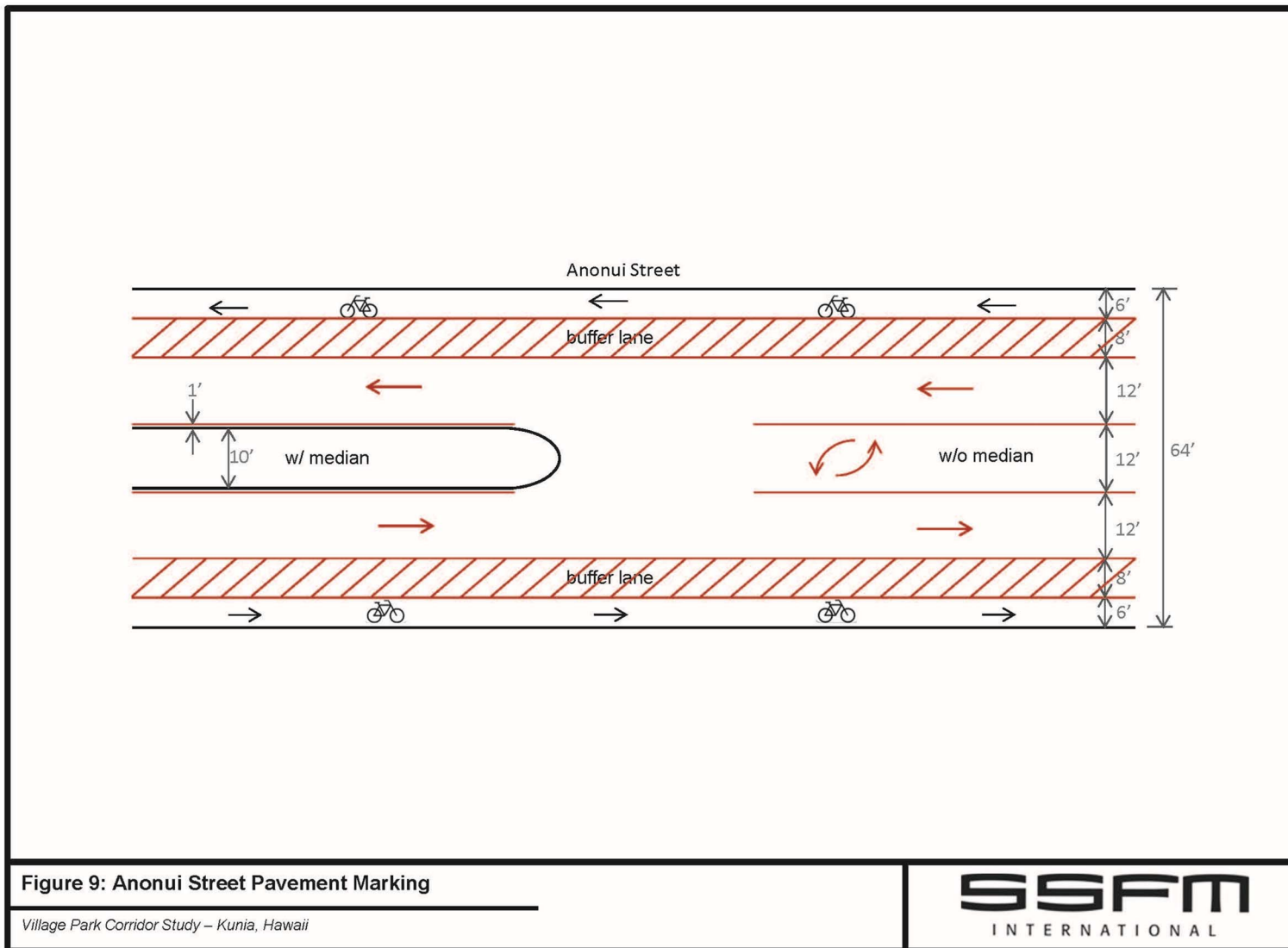


Figure 9: Anonui Street Pavement Marking

Village Park Corridor Study – Kunia, Hawaii

NEXT STEPS

- Consider your feedback
- Clarify outstanding items
- Provide final recommendations for implementation
- City to address select measures in future budget

Question and Answer



For Further Information

Please contact the Project Manager:

Ms. Diane Overland

City and County of Honolulu

Department of Transportation Services

650 South King Street

Honolulu, Hawai'i 96813

doverland@honolulu.gov

