

DAVID Y. IGE  
GOVERNOR OF  
HAWAII



DEPT. COMM. NO. 45

SUZANNE D. CASE  
CHAIRPERSON  
BOARD OF LAND AND NATURAL RESOURCES  
COMMISSION ON WATER RESOURCE MANAGEMENT

ROBERT K. MASUDA  
FIRST DEPUTY

M. KALEO MANUEL  
DEPUTY DIRECTOR - WATER

AQUATIC RESOURCES  
BOATING AND OCEAN RECREATION  
BUREAU OF CONVEYANCES  
COMMISSION ON WATER RESOURCE MANAGEMENT  
CONSERVATION AND COASTAL LANDS  
CONSERVATION AND RESOURCES ENFORCEMENT  
ENGINEERING  
FORESTRY AND WILDLIFE  
HISTORIC PRESERVATION  
KAHOOLAWE ISLAND RESERVE COMMISSION  
LAND  
STATE PARKS

STATE OF HAWAII  
DEPARTMENT OF LAND AND NATURAL RESOURCES

POST OFFICE BOX 621  
HONOLULU, HAWAII 96809

December 2, 2020

The Honorable Ronald D. Kouchi,  
President  
and Members of the Senate  
Thirty-First State Legislature  
State Capitol, Room 409  
Honolulu, Hawaii 96813

The Honorable Scott K. Saiki, Speaker  
and Members of the House of  
Representatives  
Thirty-First State Legislature  
State Capitol, Room 431  
Honolulu, Hawaii 96813

Dear President Kouchi, Speaker Saiki, and Members of the Legislature:

For your information and consideration, I am transmitting a copy of the Relating To The Wildlife Revolving Fund report, as required by Section 183D-10.5, Hawaii Revised Statutes (HRS). In accordance with Section 93-16, HRS, a copy of this report has been transmitted to the Legislative Reference Bureau and the report may be viewed electronically at <https://files.hawaii.gov/dlnr/reports-to-the-legislature/2021/FW21-Wildlife-Revolving-Fund-FY20.pdf>.

Sincerely,

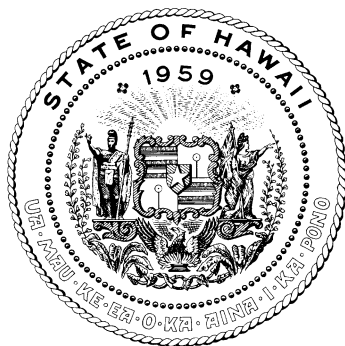
A handwritten signature in black ink that reads "Suzanne D. Case".

SUZANNE D. CASE  
Chairperson

Enclosure

**REPORT TO THE THIRTY-FIRST  
LEGISLATURE STATE OF HAWAI'I  
2021 REGULAR SESSION**

**RELATING TO THE WILDLIFE REVOLVING  
FUND FISCAL YEAR 2020**



Prepared by

**THE STATE OF HAWAI'I  
DEPARTMENT OF LAND AND NATURAL RESOURCES**

In response to Section 183D-10.5, Hawai'i Revised Statutes

December 2020

## **RELATING TO THE WILDLIFE REVOLVING FUND FISCAL YEAR 2020**

### **PURPOSE**

The goal of the Wildlife Revolving Fund (WRF) is to provide funds to manage and enhance public hunting opportunities in Hawai‘i. Act 290, Session Laws of Hawai‘i 1991, amended Section 183D-10.5, Hawai‘i Revised Statutes (HRS), by adding a requirement for an annual report to be prepared by the Department of Land and Natural Resources (Department) on the status of the WRF and transmitted to the Legislature no later than twenty days prior to the convening of each regular session. Reporting requirements include:

1. The source and application of monies deposited into the fund, including a description of the criteria and process used to determine funding priorities;
2. A description of programs and activities supported by the fund;
3. A summary of program highlights and accomplishments; and
4. A description of future program plans, including specific goals and objectives.

### **FUNDS**

Section 183D-10.5(b), HRS, provides that the following proceeds shall be retained by or transmitted to the Department for deposit into the WRF:

1. Moneys collected as fees for hunting licenses, attendance of hunter education training programs, and use of public target ranges;
2. Moneys collected under the provision of any law relating to the importation, taking, catching, or killing of game, wildlife, and products thereof;
3. Moneys, other than informers' fees authorized under Section 183D-11, HRS, collected as fines or bail forfeitures for violation of Chapter 183D, HRS, or any provision of Chapter 195D, HRS, concerning wildlife conservation; and
4. Moneys collected from the sale of:
  - A. Any article, in addition to a hunting license, which a person is required to purchase from the Department in order to hunt, when the requirement is established by law or rule; and
  - B. Any work of art upon which the article under A is based.

For Fiscal Year (FY) 2020 the major source of revenue was hunting license sales followed by the sale of game tags. Revenues exceeded the Department’s authorized budget ceiling for the WRF of \$644,164.00. New expenditures totaled \$413,049.81. The cash balance at the end of FY 2020 amounted to \$759,477.09, with outstanding encumbrances of \$50,772.05 resulting in unencumbered cash for carryover of \$708,705.

### Status of S-343

Beginning cash balance of fund on July 1, 2020	\$ 644,664.00
Revenues during FY 2020	\$ 593,006.93
Cash Transfer from FY 2019	\$ 579,519.97
Expenditures during FY 2020	-\$413,049.81
Cash balance as of June 30, 2020 Unpaid	\$ 759,477.09
Encumbrances as of June 30, 2020	-\$ 50,772.05
Unencumbered cash for carry over as of June 30, 2020	\$708,705.04

#### Summary of Revenues FY 2020

Hunting guide license and lottery	\$ 2,005.00
Game bird farmer licenses	\$ 2,995.00
Hunting licenses with wildlife conservation stamp	\$312,457.00
Wildlife Conservation stamps	\$ 767.00
Game bird stamps	\$ 41,338.50
Game tags	\$177,038.00
Interest and Refund /reimbursement of prior period expenditures	\$ 56,045.93

<b>Total Revenue for FY 2020</b>	<b>\$593,006.93</b>
----------------------------------	---------------------

#### Summary of Expenditures FY 2020

Personnel	\$236,162.91
Operations	\$172,590.68
Indirect costs	\$ 4,296.02
<b>Total Expenditures</b>	<b>\$413,049.61</b>

#### Summary of Outstanding Claims FY 2020

Operations Claims	\$72,478.16
Amount expended	\$21,706.11
<b>Total remaining balance if outstanding claims</b>	<b>\$50,772.05</b>

## **FUNDING PRIORITIES**

The WRF has been an important portion of the overall budget to meet obligations of state match and operating and salary expenses for hunting program and wildlife management projects. Because the major sources of revenue for the WRF come from direct charges to hunters, priority is given to expenditures which benefit this user group. A formal hunting rule change has been conducted and was approved in May of 2015. Therefore, the sale of stamps, game tags, and application fees may be assessed to hunters by species, area, and season chosen to hunt.

In budgeting for the WRF, a policy of allotting at least 85% of the budget for the hunting program has been in place and followed. Up to 15% of the budget may be used for nongame and wildlife sanctuary management projects that may have dual benefits to game species and nongame species.

Section 183D-10.5(e), HRS, also requires that the State first use WRF monies "to maximize the State's participation to secure federal funds under the Pittman-Robertson Federal Aid in Wildlife Restoration Act." Consequently, a priority was given to those expenditures that provided the state match for Pittman-Robertson (PR) projects.

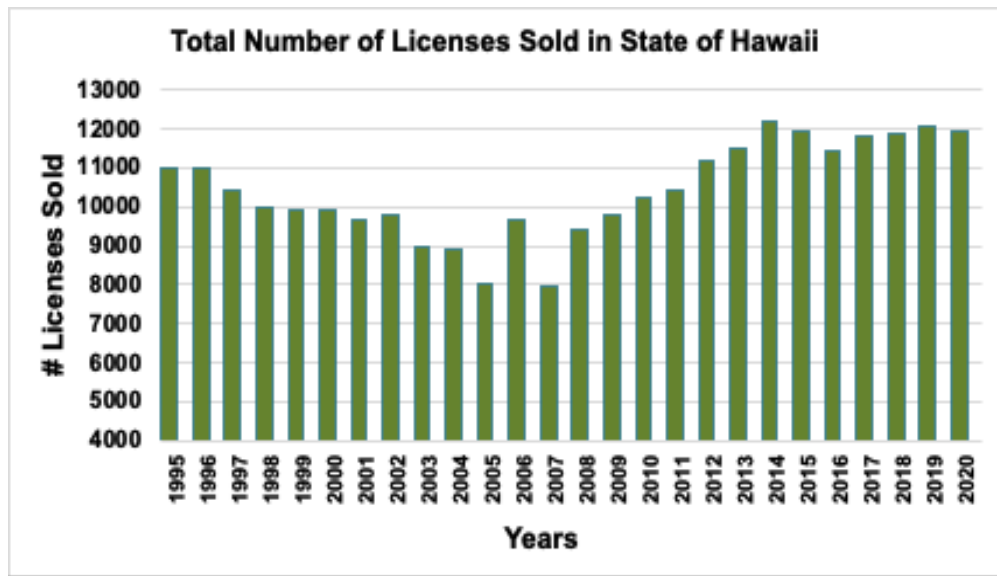
The allocation of operating funds to the Division of Forestry and Wildlife's (DOFAW) Branch Offices was done on a lump sum basis to be used on eligible projects. The operating funds were allotted to the Branch Offices based on the respective Branch wildlife program size and complexity and amount of revenue generated from license fees.

## **PROCESS USED**

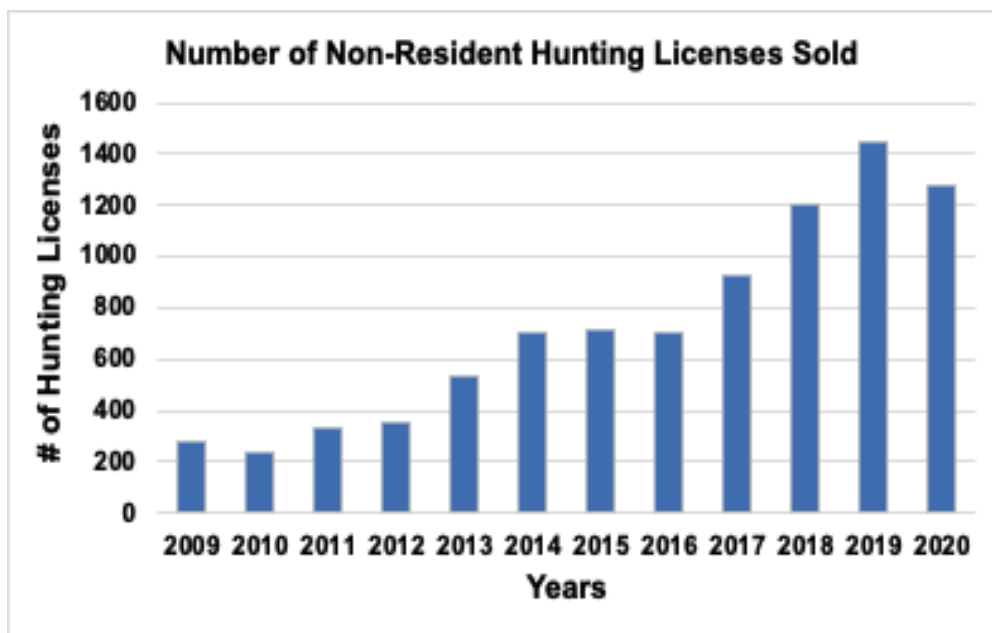
1. The Department's Fiscal Office and DOFAW coordinated to determine the amount of the WRF available for allocation to DOFAW's Branch Offices.
2. At the beginning of each fiscal year, a portion of the WRF budget is allocated to each DOFAW Branch Office and to Honolulu Administrative Staff for projects. A portion of the funds are allocated for temporary personnel to maintain wildlife program functions and to pay budgeted add-on salary costs to assist with wildlife projects.
3. Each Branch Office collaborates in the development of the overall annual WRF budget to benefit the resources and resource users, all within the criteria of compliance with the purpose of the WRF and the necessity to provide state match requirements for PR projects.
4. An emphasis was placed on using the WRF for essential expenditures to provide support for public hunting opportunities.
5. All expenditures are identified and coded as "WILDLIFE REVOLVING FUND: S-20-343" to facilitate tracking and accountability.
6. Expenditures complied with approved categories of expenditures for the WRF as established by the Board of Land and Natural Resources on August 13, 1993 (see Attachment I appended).

## **HUNTING LICENSE SALES OVERVIEW**

Overall, Hawai‘i hunting license sales and sale of non-resident licenses have shown a steady increase since 2005 and 2009, respectively (Figure 1 and 2). Since this combined revenue is earmarked in the WRF and used to benefit game management and hunting programs, it suggests that hunter recruitment, hunter retention, and hunting tourism programs be actively promoted.

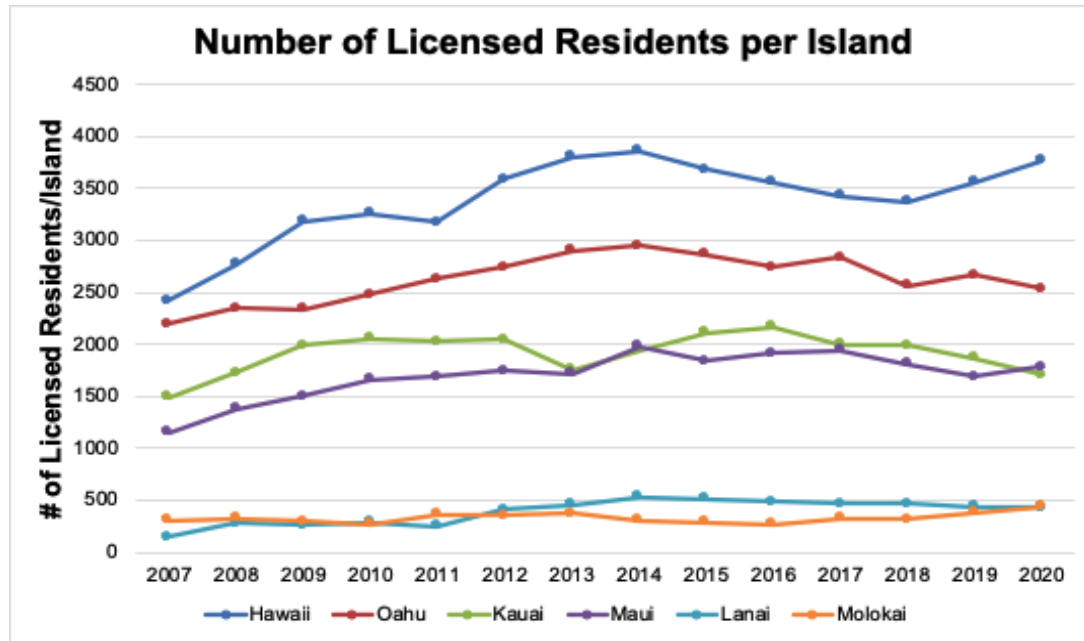


**Figure 1.** The total number of hunting licenses sold in the State of Hawai‘i per fiscal year (1995 – 2020).



**Figure 2.** The total number of non-resident hunting licenses sold per fiscal year (2009 – 2020).

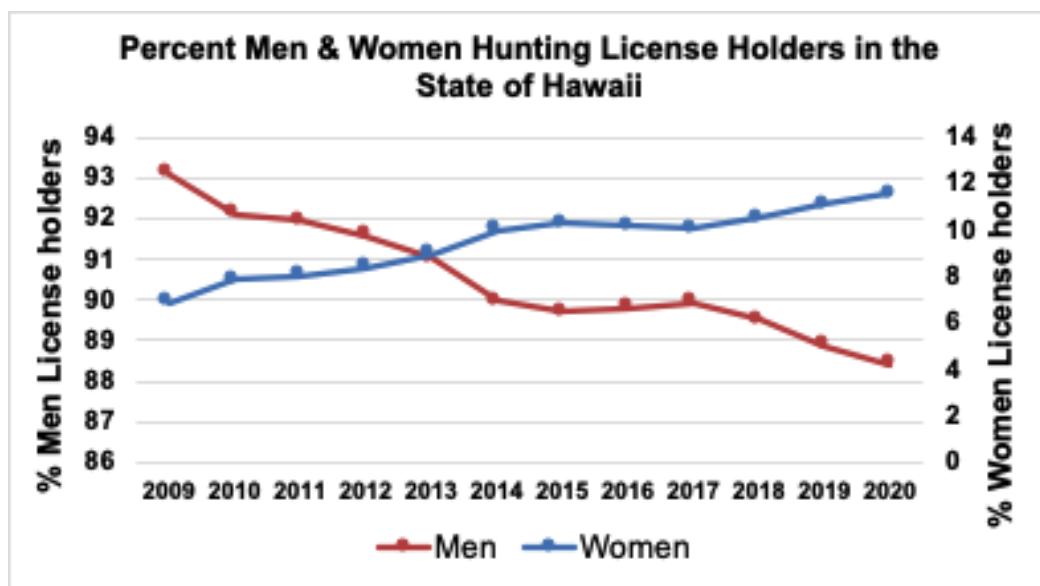
A large number of licensed hunters are residents of Hawai‘i Island, followed by O‘ahu, Kaua‘i, and Maui (Figure 3). It is important to note that hunters from any island may hunt on neighboring islands where they do not reside. For instance, even though the number of licensed resident hunters on Lāna‘i is low, many hunters from neighboring islands hunt on Lāna‘i.



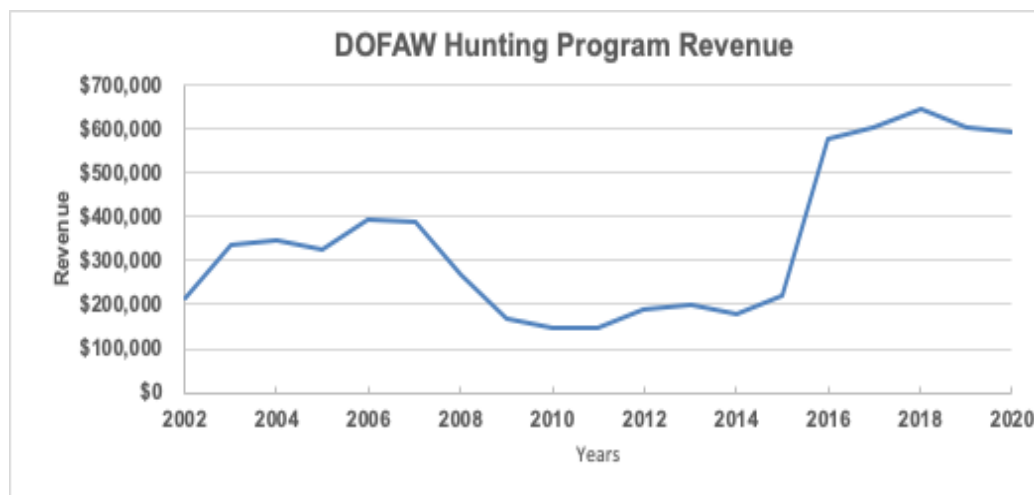
**Figure 3.** The total number of residents with a hunting license per island for fiscal years 2007–2020.

Interestingly, even though most licensed hunters are men (90%) versus women (10%), the number of women hunting license holders have been increasing over the past decade whereas the number of men hunting license holders are decreasing (Figure4).

DOFAW established a \$10 wildlife conservation stamp in 2015 and made it a mandatory part of the general hunting license, effectively increasing the resident license fee purchase price to \$20 (non-resident \$105). Exhibit 13 in Chapters 13-122 and 13-123, Hawai‘i Administrative Rules (HAR), establishes fees for wildlife stamps. Hence a sharp increase in revenues was observed in fiscal year 2016 (Figure 5). For the current fee schedule for hunting licenses, wildlife stamps, applications, permits, and tags for special or lottery hunts see Table 2.



**Figure 4.** Percent men and women license holders in the State of Hawai‘i for fiscal year 2009 – 2020.

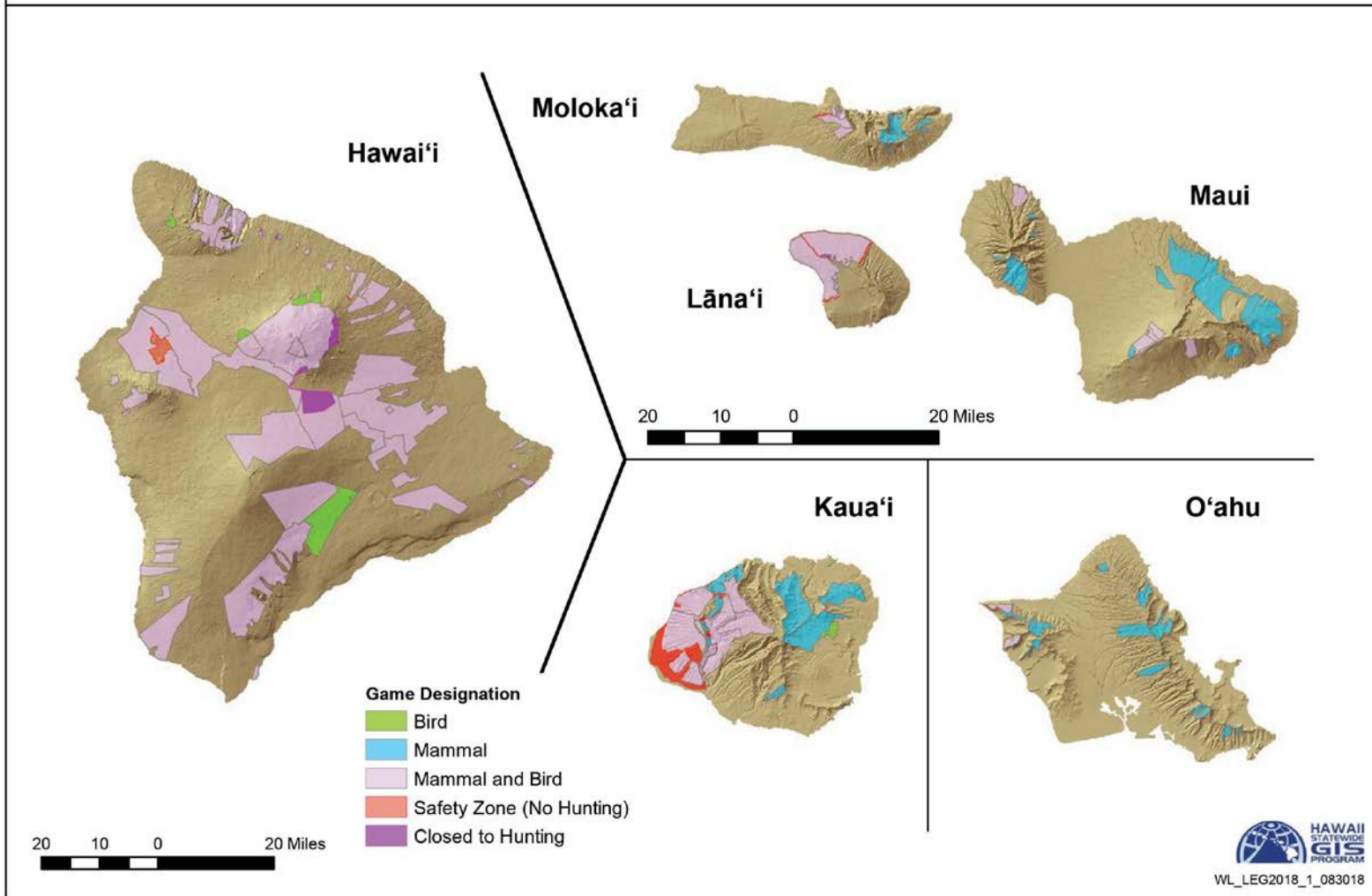


**Figure 5.** Revenue derived from the WRF for fiscal year 2002– 2020.



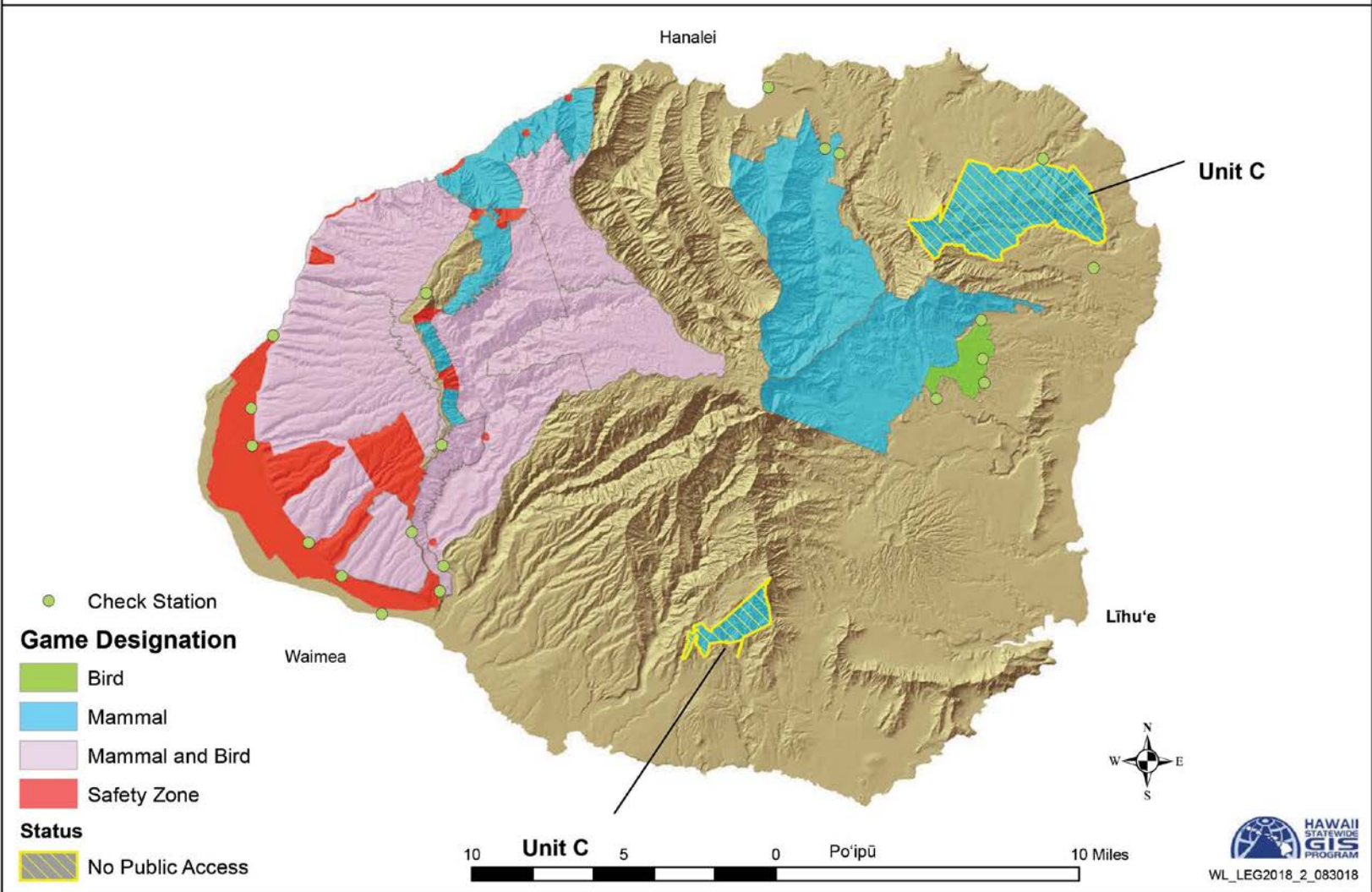


## Hunting Areas Statewide FY 20





## Kauai Island Hunting Areas FY 20



## **PROGRAM HIGHLIGHTS, ACCOMPLISHMENTS, AND FUTURE PLANS**

### **KAUA'I BRANCH**

#### **Hunting Season Management**

*Objectives:* Provide hunting information to the public through announcements and news releases. Manage public hunting seasons in compliance with Chapter 13-122, HAR, regulating game bird hunting and Chapter 13-123, HAR, regulating game mammal hunting.

*Accomplishments:* The WRF was used to purchase: 1) U.S. Postal Service bulk stamps to mail game tags and permits to public hunters; 2) Miscellaneous office supplies to operate the public hunting seasons; 3) Game vehicle maintenance and repair; and 4) Telecommunication services. No major expenditures were made this project period due to COVID restrictions.

#### **Commission on Hunting License Sales**

*Objective:* Pay the Kaua'i hunting license vendors for their commission on the sale of the 2019-2020 Hawai'i hunting licenses.

*Accomplishments:* Hunting licenses were available and sold to Kaua'i license vendors.

#### **Game Bird Release Project**

*Objectives:* Manage and operate the pheasant release project in the Kekaha Game Management Area (KGMA).

*Accomplishments:* The game bird release project was cancelled this year due to the mainland game bird farmer which was unable to get approval to ship birds to Hawaii due to COVID-19 restrictions.

#### **Game Operations and Maintenance**

*Objectives:* Maintain and expand the capacity to manage water units, fences, hunter check stations, and other infrastructure necessary for hunting. Improve game operations and maintenance through additional field staffing, equipment, and supplies.

*Accomplishments:* The WRF was used to upkeep the 13 hunter public check stations. Game auto-feeders were maintained and operated through the summer and fall season and deactivated one month prior to the open season in November. A total of 30 game bird water guzzlers were in operation and were maintained in the KGMA. Game trucks and equipment were also maintained and repaired when needed. Lastly, the WRF was used to print hunting information and maps and to pay for utility bills, such as electric, water, and telephones.

Total WRF Expenditure for Kaua'i Branch: Operating \$13,489.89/Personnel \$63,056.56

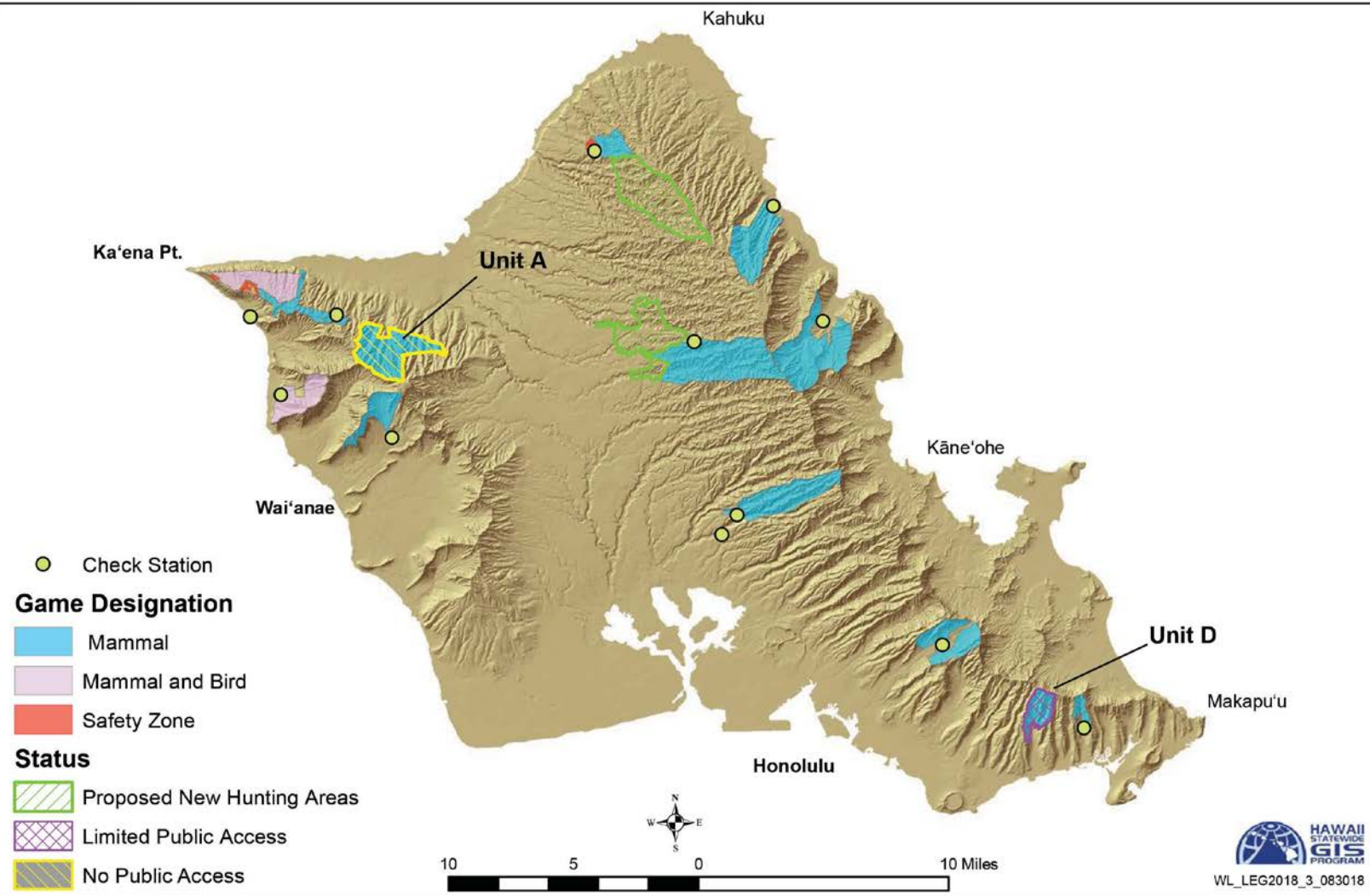
#### **Future Program Plans**

1. Provide for the administrative costs, such as printing and publishing of game tags, permits, and announcements of hunting seasons and additions of new hunting areas - \$5,000 (100% WRF).

2. Incremental development of the proposed Hanahanapuni public shooting/archery range - \$20,000 (50% WRF).
3. Continue the artificial game bird release project in the KGMA. Expand on the game bird release project in Hunting Unit I (Wailua GMA) and Unit L (Waimea Heights). Plan, design, and purchase building materials, equipment, and supplies for the construction of a game bird rearing facility - \$30,000 (100% WRF).
4. Maintain game vehicles and equipment to manage and operate the Kaua'i hunting program - \$30,000 (50% WRF).
5. Purchase of construction materials and supplies to maintain existing game management facilities, including fences, gates, water units, feeding sites, restrooms, storage buildings, and hunter check stations - \$30,000 (50% WRF).
6. Provide air logistical support to conduct surveys, operations, and maintenance of the Kaua'i game management program - \$20,000 (50% WRF).
7. Provide new hunter access routes to several hunting units. Procure to hire a consultant to assist DOFAW on the Environmental Assessment - \$60,000 (50% WRF).



## Oahu Hunting Areas FY 20



## O'AHU BRANCH

### Game Management

*Objectives:* Maintain and enhance wildlife habitat and facilities on public hunting areas, game management areas, and wildlife sanctuaries; and improve game bird and game mammal hunting opportunities.

*Accomplishments:* Funding was used to manage habitat for game birds, and maintain infrastructure designed to facilitate game bird hunting. Specific activities include the following:

Funded a biological technician through the Research Corporation of the University of Hawai'i (RCUH) to assist with various game related projects, including: 1) processing and issuing permits for ungulate control/hunting opportunities in forest reserves and other state lands that are not open to public hunting; 2) assisted with game bird propagation project operations; 3) maintaining access locks and gates to control hunting areas.

### Habitat Management and Operations

- Repaired and maintained tractors, mowers, and equipment used for road and habitat maintenance activities. (Kuaokala GMA). Purchased supplies for power tools used to maintain access infrastructure and roads

### Game Bird Propagation

- Maintained four brooder cages and one fly pen (30' x 60') for ring-necked pheasant propagation project FY 2019-2020 with volunteer hunters, and a watering unit for the fly pen. (DOFAW Kawainui Baseyard). Successfully released 167 ring-necked pheasants out of the original 212 to raise for the FY 2019-2020 game bird season. (Kuaokala GMA).
- Purchased 59 bags of feed totaling 2,950 pounds for propagation project (DOFAW Kawainui Baseyard)

Total WRF Expenditure for O'ahu Branch: Operating \$29,990.79; Personnel \$3,308.81

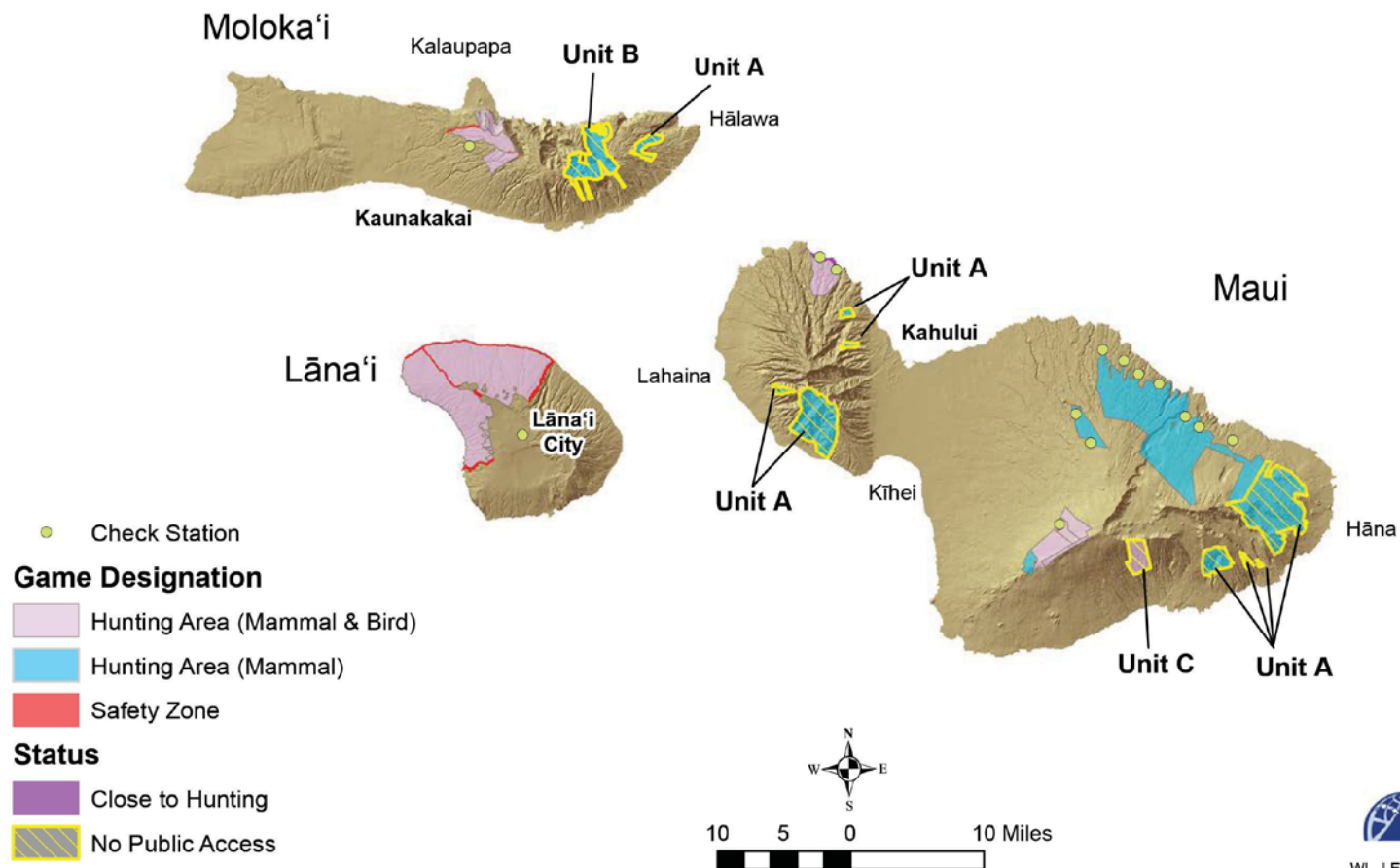
### Future Program Plans

1. Restore revenue from the sale of hunting tags, stamps, and fees and fill vacant General Laborer position - \$60,000 (100% WRF).
2. Fund a Wildlife Technician position to perform tasks related to ongoing management of public hunting areas - \$25,000 (100% WRF). This position will assist the game management Wildlife Biologist in field operations.
3. Purchase equipment and supplies needed for ongoing operations and maintenance in wildlife management areas - \$15,000 (100% WRF).
4. Through partnerships with the University of Hawai'i, fund graduate level research to understand the socio-economic impacts of Hawai'i's hunters - \$10,000 (100% WRF).
5. Propagate and release 300 ring-necked pheasants annually - \$5,000 (100% WRF).





## Maui Nui Hunting Areas FY 20



## MAUI BRANCH

### Lease of Cooperative Game Management Area - Lānaʻi

*Objective:* Provide 30,000 acres of land on Lānaʻi for sport hunting and wildlife management

*Accomplishment:* The annual lease rental for the Lānaʻi Cooperative Game Management Area (CGMA) was paid via WRF monies. This area provided hunters the opportunity to pursue Axis deer, Mouflon sheep, and a variety of game birds.

### Game Mammal Aerial Survey - Lānaʻi

*Objective:* Conduct annual game mammal surveys of the Lānaʻi CGMA and private portions of Lānaʻi Island. Surveys conducted on the state managed portion of Lānaʻi are used in part for setting upcoming bag limits. Staff from Maui led the survey effort for both the fall and spring surveys. Associated costs for the spring survey only included staff travel. The population levels of Axis deer and Mouflon sheep are for the fall survey only.

*Accomplishments:* An aerial survey of the Lānaʻi CGMA and the Pūlama Lānaʻi hunting area was conducted on September 11-12, 2019. The spring survey was conducted on March 3-4, 2020. Costs associated with the fall aerial survey included rental of a helicopter and staff travel, while the spring aerial survey only included staff travel. Three staff members from the Maui district traveled to Lānaʻi to lead the survey efforts.

Within the Lānaʻi CGMA, a total of 901 Axis deer were counted on the fall survey resulting in an estimated population of 2,424 animals. 510 Mouflon sheep were counted, bringing the estimated population to 1,372 animals.

Within the Pūlama Lānaʻi hunting area, a total of 1,025 Axis deer were counted on the fall survey, bringing the estimated population to 2,757 animals. 146 Mouflon sheep were counted, resulting in an estimated population of 393 animals.

### Personnel Expenses - Lānaʻi

*Objective:* Maintain and service facilities and field operations on Lānaʻi through the Forestry and Wildlife Worker II position. Compensate staff when working beyond normal business hours for hunter check in.

*Accomplishments:* A Forestry and Wildlife Worker II position on Lānaʻi, funded through the WRF, assists the Forestry and Wildlife Technician with the upkeep and maintenance of 30 miles of water unit pipeline, 25 water units, a multitude of signs, and 54 miles of access roads in the CGMA. The Forestry and Wildlife Worker II also supports habitat management, game bird and game mammal surveys, enclosure maintenance, and predator control. Hunting activities and hunter check-in on Lānaʻi occurs after normal operating hours and on Holidays. Overtime is paid to the Lānaʻi technician to accommodate hunters participating in both the Mouflon sheep and Axis deer hunts.



## Management of the Lottery Hunts - Lānaʻi

*Objectives:* Process and print documents for the Axis deer and Mouflon sheep hunts on Lānaʻi. Mail instruction sheets, addendums and applications for the two hunts to the outer districts. Provide opportunities for the public to apply online for hunts. Mail application cards, including lottery results, to hunters who apply online. Provide a conference room to conduct and accommodate the public for the Axis deer and Mouflon sheep lottery. Provide hunters the necessary tags needed for hunting on Lānaʻi.

*Accomplishments:* Application cards, instruction sheets, and addendums were printed and distributed to all districts and lotteries conducted. The public was provided the opportunity to apply for both Lanai hunts online. Approximately 60% of applicants applied online for both hunts, resulting in service fees being paid to the contractor of the online program. First class stamps were purchased and used to mail application cards and lottery results to hunters who applied online. A conference room was rented to conduct and accommodate the public for the Axis deer and Mouflon sheep lottery. Mouflon sheep and Axis deer tags were purchased during this fiscal period. A power cord was purchased and used to conduct the lotteries.

## Game Mammal Facilities Operations and Maintenance – Maui District

*Objectives:* Rent dumpster(s) during the Axis deer and Mouflon sheep seasons for hunters to dispose of carcasses. Purchase materials required for the hunting program to function. Ensure vehicles are maintained and kept operational. Staff travel to Lānaʻi for meetings, and travel to outer islands for game related meetings. Repair roads within public hunter areas to provide easier access.

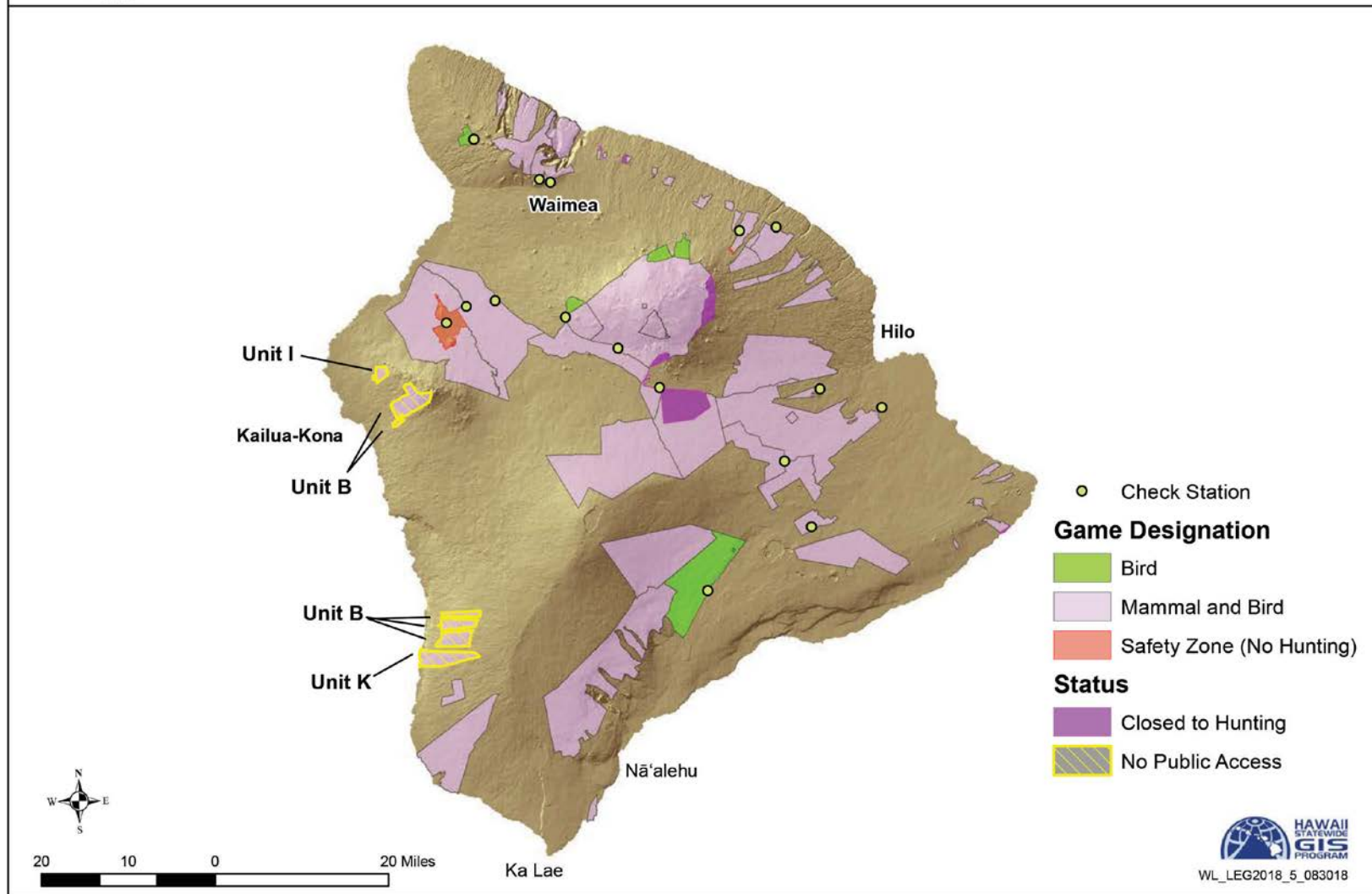
*Accomplishments:* Two dumpsters were rented for each of the two hunts that provided the hunting community with the facilities to dispose of animal carcasses. Hardware items were purchased to maintain infrastructure within the Lanai Cooperative Game Management Area. New water troughs were purchased and shipped to Lanai to be used to replace damaged, leaking or inefficient troughs. Vehicle repairs were charged to this fund, ensuring staff vehicles were available, maintained, repaired and kept operational for completing wildlife projects and facilities. Staff travelled to the outer islands to attend game related meetings. During this fiscal year, roads within the Lanai Cooperative Game Management Area were repaired, providing hunters access to the hunting area.

#### Current and Future Program Plans

1. Fund rental of lease on Lāna‘i - \$35,000 (100% WRF).
2. Fund Forestry and Wildlife Worker II position on Lāna‘i for facility upkeep and maintenance - \$75,000 (100% WRF).
3. Fund Lāna‘i check station overtime for Forestry and Wildlife Technician V position - \$2,000 (100% WRF).
4. Fund game mammal surveys on Lāna‘i - \$15,000 (100% WRF).
5. Fund management of lottery hunts on Lāna‘i; document printing, data input, and drawings - \$15,000 (100% WRF).
6. Fund game mammal facilities development and operations and maintenance on Lāna‘i - \$50,000 (100% WRF).
7. Fund clerk position for Lāna‘i check station - \$25,000 (100% WRF).
8. Habitat remediation/enhancement - \$25,000 (100% WRF).
9. Purchase flatbed truck - \$75,000 (75% WRF).



## Hawaii Island Hunting Areas FY20



## WEST HAWAI'I DISTRICT

### Game Operations and Maintenance

*Objectives:* Conduct predator control activities and maintain game related facilities and infrastructure, including guzzlers and hunter access roads.

*Accomplishments:* The part-time General Laborer performed predator control trapping in Pu'u Wa'awa'a Forest Reserve and Mauna Kea Forest Reserve from July 2019 through 2020. There were 132 mongoose and 12 cats trapped at Pu'u Wa'awa'a Forest Reserve and 81 mongoose and 8 cats trapped at Mauna Kea. Also, roads and firebreaks were maintained to improve hunter access to Pu'u Wa'awa'a Forest Reserve and Pu'u Anahulu Game Management Area.

### Game Program Research

*Objectives:* Accurately estimate survival rates, population demographics, and habitat use in the Pu'u Wa'awa'a Forest Reserve and the Pu'u Anahulu Game Management Area.

*Accomplishments:* Collars that were placed on sheep in Pu'u Wa'awa'a and Pu'u Anahulu in 2018 continued to be monitored in 2020. Data from this project continued to show that adult sheep in the study area had an apparent annual survival rate of 95%. The most common cause of mortality was predation by wild dogs. Camera traps were also used to estimate population sizes for sheep and goats. The population of sheep was estimated to be 918 (95% Confidence Interval [543, 1551]).

### Game Program Coordination

*Objectives:* Assist vendors in Kona with hunting license sales and training (these being the only outlets for the public to purchase hunting licenses in Kona other than the DOFAW office 40 miles away in Kamuela).

*Accomplishments:* The district's Secretary assisted with hunting license sales training of vendors in Kona. During anticipated increase in hunting license sales traffic at these establishments, the Secretary assisted with license sales and dissemination of information pertinent with upcoming seasons.

### Temporary Hire of Half-Time General Laborer

*Objectives:* Assist the district wildlife staff in the operations and maintenance of projects and provide predator control at various locations.

*Accomplishment:* This position was filled in October 2018.

### Motor Vehicle Repairs, Maintenance, and Equipment

*Objective:* Maintain trucks in service for WRF purposes.

*Accomplishment:* Vehicles remained functional with no debts to the WRF for maintenance.

#### Future Program Plans

1. Restore equipment purchase, vehicle purchase and maintenance, and facilities construction as funds accrue from the sale of hunting licenses, stamps, tags, and fees - \$35,000 (100% WRF).
2. Provide for the administrative costs, such as printing and publishing of game tags, permits, and announcements of hunting seasons and additions of new hunting areas - \$10,000 (100% WRF).
3. Once funding is available, improve game habitat projects in game management areas and other appropriate areas by installing water units and food plots and improving cover - \$50,000 (100% WRF).
4. Continue part-time General Laborer I position - \$33,000 (100% WRF).
5. Fund a full time Wildlife Biologist III position - \$55,000 (100% WRF).

## EAST HAWAI'I DISTRICT

### General Laborer Position

*Objectives:* Pursue duties pertaining to game/hunting program. Conduct predator control activities, facilities maintenance, and game species surveys.

*Accomplishments:* Work accomplished included habitat management, predator control, light construction for predator trapping and facilities maintenance, up-keep of hunter check stations and shooting area.

### Commissions on Hunting License Sales

*Objective:* Maintain a network of hunting license vendors on the island of Hawai'i for sales of the 2019-2020 Hawai'i hunting licenses.

*Accomplishment:* Hunting licenses were sold at various vendor locations providing convenience to public hunters. (the addition of one vendor in Hilo area mostly due to COVID-19)

### Mile Marker 16 Shooting Range

*Objective:* Assist with maintenance and questions concerning Mile Marker 16 range.

*Accomplishment:* a portion of the former public hunting area at Mile Marker 16 on the Saddle Road was managed as a public shooting range by the DLNR/DOFAW/DOCARE

Mile Marker 16 shooting range was established with the intent of providing a location for the public to improve marksmanship and practice the safe and responsible use of firearms, as taught in Hunter Education classes. The Division of Conservation and Resources Enforcement and DOFAW assisted with maintenance and management of the range.



Kapapala check station



Mile Marker 16

### Future Program Plans

1. Replace boundary and safety zone signs in hunting areas - \$1,500 (50% WRF).
2. Support game bird release facility and game bird rearing activities - \$1,500 (100% WRF).
3. Expand and improve game bird release program - \$3,000 (100% WRF).
4. Weed control and habitat improvements in public hunting areas - \$500 (50% WRF).
5. Check station, roads, trails, and water unit maintenance in public hunting areas - \$1,200 (50% WRF).

### Game Operations and Maintenance:

*Objective:* Conduct predator control activities, the maintenance of game-related facilities such as guzzlers/ hunter check stations and maintenance of hunter access roads.

*Accomplishment:* All operations and maintenance activities were accomplished with little use of WRF monies. WRF monies were used to pay utility bills, supporting the administrative side of the game program, and to support existing game bird rearing fly way. The purchase of game bird chicks for 2020 fiscal year was cancelled due Covid and shipping issues.

Total WRF Expenditure for East Hawai'i District: Operating \$571.00/Personnel \$61,091.04  
July 1 to January 15, 2020 ½ time general laborer resigned concerns over only half time position.

### Future Program Plans

1. Replace boundary and safety zone signs in hunting areas (0% WRF).
2. Support game bird facilities and game bird rearing activities (\$3,500 100% WRF)
3. Expand and improve game bird release program (\$3,500 100% WRF)
4. Weed control and habitat improvements in public hunting areas.
5. Check station, roads, trails and water unit maintenance in PHA ( \$15,000 10% WRF).
6. Fill position of half time general laborer (\$42,000 50% fte 100% WRF)



Art Contest  
Winner  
2019-2020  
Wildlife  
Conservation  
Stamp



Art Contest  
Winner  
2019-2020  
Game Bird  
Stamp

### Notification of Hunting Season Openings and Changes

*Objectives:* Communicate any changes in hunting seasons and announce new or special hunting opportunities as required by state regulations.

*Accomplishments:* Several legal notices announcing new animal control opportunities for hunters were produced, and a series of announcements and news releases were produced for hunting seasons.

### Implementation of Communication Strategies to Improve Hunter Recruitment and Retention

*Objectives:* 1) Write, publish, and distribute quarterly informational newsletter; and 2) Maintain a listserv (email list) for all hunting enthusiasts that would like to receive hunting related updates, announcements, and newsletter.

*Accomplishments:* The quarterly informational newsletter has been published since October 2017. The *Go Hunt Hawai'i* newsletter is an informational newsletter to connect hunters and DOFAW resource managers. This newsletter is available online on the DOFAW website.

A listserv was created for those who are interested in signing up to receive hunting related updates, announcements, and newsletter. There are now 6,656 people signed up on this mailing list. People may sign up online ([dlnr.hawaii.gov/recreation/hunting/](http://dlnr.hawaii.gov/recreation/hunting/)). Sign up sheets are also available at all DOFAW offices and at every hunter education class.





This is the eleventh edition of Go Hunt Hawai'i, a quarterly newsletter to connect hunters and the Department of Land and Natural Resources (DLNR), Division of Forestry and Wildlife (DOFAW). Sign up to stay up to date on announcements, changes to hunting areas, research on animal populations and more.

SIGN ME UP

## Collaboration on Game Bird Projects

Many hands have been involved with game bird rearing and release projects on Kauai and Oahu. From volunteer hunters to Division of Forestry and Wildlife staff and Kapaemahu Corps members, all play an important role, including picking up the chicks from the airport, building pens to house the birds, and daily feeding.

There are three main stages to the projects once the chicks arrive from the mainland. First, they settle in brooder cages. Then, they are transferred to game bird fly pens. Once mature, the birds will be released before game bird season, which starts in November.

On Oahu, a total of 212 ring-necked pheasants arrived in July. Birds will be released at the Kuakula Game Management Area. On Kauai, 600 ring-necked pheasants and 150 melanistic mutant pheasants arrived in June. Staff and volunteers worked hard to rear the game birds, but unfortunately the pheasants on Kauai died from botulism while being housed in the fly pens.

For season length, bag limits, and other information for game bird hunts throughout the State, please see Title 13, Chapter 132, "Rules, Regulating Game Bird Hunting, Field Trials, and Commercial Shooting Preserves."



The Division of Forestry and Wildlife would like to thank the volunteers who helped with these projects:

**Maui Volunteers:**  
Ella Anderson  
Ella Anderson  
Chris Conner  
Chris Conner  
Kawika Harris  
Kawika Harris  
Sean Spill  
Sean Spill  
Hawaii Volunteers  
Hawaii Volunteers  
Alan Anderson  
Alan Anderson  
Linda Karpinski  
Linda Karpinski  
Mark Karpinski  
Mark Karpinski  
Karin Viorito  
Karin Viorito  
Mikaela Viorito  
Mikaela Viorito

**Oahu Volunteers:**  
Carmen Cheng  
Carmen Cheng  
Jordan A. Tobi  
Jordan A. Tobi  
Jordan A. Tobi  
Jordan A. Tobi  
Robert M. Landon  
Robert M. Landon  
Kip Hagedorn  
Kip Hagedorn  
Jordan Lee Jr.  
Jordan Lee Jr.  
Charles Lee  
Charles Lee  
Brett K. Karpinski  
Brett K. Karpinski  
Tony Mendes  
Tony Mendes  
Brian D. Tishiga  
Brian D. Tishiga  
Jordan Tish  
Jordan Tish



## Volunteer Clean Up on Hawai'i Island With Pig Hunters of Hawai'i

On June 22, 2019, approximately 20 volunteers from Hawai'i Island's Pig Hunters of Hawai'i cleaned up trash along Starback Highway and several forest reserve side roads. Staff from the Division of Forestry and Wildlife assisted with two trucks and a trailer.

The effort cleared 35 tires, metals varying from chopped vehicles to appliances, and miscellaneous litter. Eager hands were happy to give back to a popular hunting area frequented by many of the volunteers. Plans are under way to make this an annual volunteer event at this site. Mahalo to the volunteers.

## Announcements

### GAME MANAGEMENT ADVISORY COMMISSION (GMAC)

### LĀNA'I

#### COMMISSION UPDATES

Chair:	To be determined
Members:	Josiah Jary (Oahu) Ryan Kichitsu (East Hawai'i) Kulani Nakano (Maui) Kulani Nakano (Maui) Stanley Kikula (Kauai) Nancy Tenille (Honolulu at Large) Vacant (Kauai) Vacant (West Hawai'i)
Ex officio (invited):	Robert K. Mitsuoka (Designated for the Chairperson, Board of Land and Natural Resources)

The GMAC is looking to fill the vacant Kauai and West Hawai'i Commissioner seats.

If you are interested in serving on the GMAC, please fill out the online application [HERE](#).

GMAC Commissioners act in an advisory capacity to the Board of Land and Natural Resources, which sets policies for the Department.

#### AXIS DEER SEASON

Deers for the 2020 Lāna'i Axis deer hunting season have been announced. The deadline for submitting applications will be 4:00 PM on Friday, November 1, 2019.

For more information, click [HERE](#).

For season length, bag limits, and other information for game animal hunts throughout the State, please see Title 13, Chapter 132, "Rules, Regulating Game Animal Hunting."



This is the twelfth edition of Go Hunt Hawai'i, a quarterly newsletter to connect hunters and the Department of Land and Natural Resources (DLNR), Division of Forestry and Wildlife (DOFAW). Sign up to stay up to date on announcements, changes to hunting areas, research on animal populations and more.

SIGN ME UP

## Game Bird Surveys at Mauna Kea and Kapapala GMA

Dr. Javier Cotin and DOFAW biologists Kanalu Sprout and Ian Cole began the annual game bird surveys at Mauna Kea and Kapapala Cooperative Game Management Area (GMA). Hunters from Oahu and Big Island recently surveyed with the aid of dogs at both Mauna Kea and Kapapala GMA.

For Kapapala, 73 transects were selected and divided in 8 sections. Most transects were set along open roads or paths, due to the dense vegetation that most of the Kapapala Forest reserve presents. For Mauna Kea, 68 transects were selected and divided in 9 sections. Transects were off trail but following previous transects already marked designed for Palila surveys.

Surveys have been conducted with and without the use of dogs. However, data has shown that dogs produce more accurate estimates of game birds than without the use of dogs. Thirteen species of game birds have been detected throughout the surveys with Erkel's francolins being the most abundant. The most recent survey data is currently being analyzed for review by DOFAW staff.

A big thank you to all of our hunters and their dogs that come out to participate!



## DOCARE Conservation Resources Enforcement Academy Training with DOFAW

The Division of Conservation and Resource Enforcement (DOCARE) begins training its newest recruits on January 21st. The academy is intended to attract people without any law enforcement experience and will include training in specialized conservation enforcement and basic training required of all police officers.

Recruits will meet with DOFAW staff in July for two days of in-class training and two days of field training. DOFAW staff members will provide an overview of their programs and their program priorities. The DOFAW programs included in this training are:

- Forestry

- Wildlife (Game and Non-Game)
- Native Ecosystem Protection and Management (NEM)
- Na Ala Hele
- Protection (Fire and ROD)

The field days are intended to cover commercial tours, Na Ala Hele trails, native species management, watershed management, wildlife control hunting permits, hiking capacity limits, sampling grounds, bird and plant identification, and much more.

For more information, please visit <https://dlnr.hawaii.gov/docare/>.

## Announcements

### HUNTING STAMP CONTEXT

#### DOFAW SEEKING ART ENTRIES

The 2020-2021 Hunting Stamp contest is still open! The subjects for this year are the Spotted Dove (*Streptopelia chinensis*) and the Columbian Black-Tailed Deer (*Odocoileus columbianus*). Artists interested in entering the contest must submit their paintings by February 1, 2020. The winner will be notified on February 15, 2020, with a maximum prize of \$1,000.

For more information, click [HERE](#).



### GMAC

#### COMMISSION UPDATES

The Kauai Commissioner seat is still vacant. The State Game Management Advisory Commission (GMAC) is seeking applicants.

If you are interested in serving on the GMAC, please fill out the online application [HERE](#).

GMAC members act in an advisory capacity for the Board of Land and Natural Resources, which sets policies for the Department.

### LĀNA'I RESULTS

#### AXIS DEER SEASON RESULTS

The 2020 Lāna'i axis deer season public listing is posted on the DOFAW website. For more information, click [HERE](#).



## Go Hunt Hawai'i Newsletter (Oct, 2019 & Jan. 2020)

### Public Engagement in Game Management

**Objective:** Create, refine and report on the bi-annual Hawaii Island gamebird surveys survey to assist in improving management in public hunting areas in the State of Hawai'i. Surveys are conducted with hunters that volunteer each year.

**Accomplishment:** For Kapapala 73 transected were selected and 68 selected for Mauna Kea. Surveys were conducted with and with out dogs. However data shown that dogs produces more accurate estimates of game birds then without the use of dogs.

The following page provides information on the new DOCARE Conservation Resources Enforcement Academy Training with DOFAW, which was held on May 12-13, 2020.



## Hunting License Sales Coordination

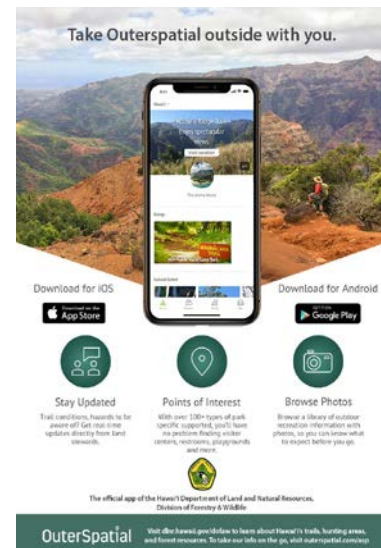
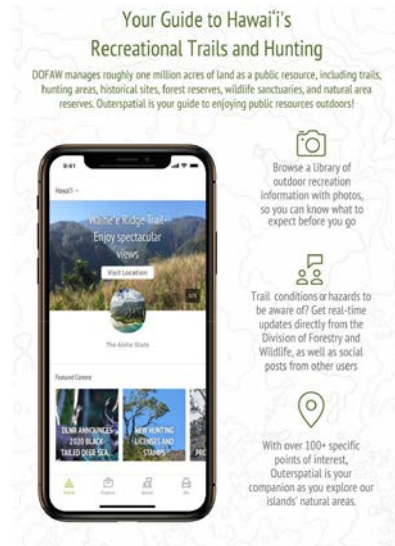
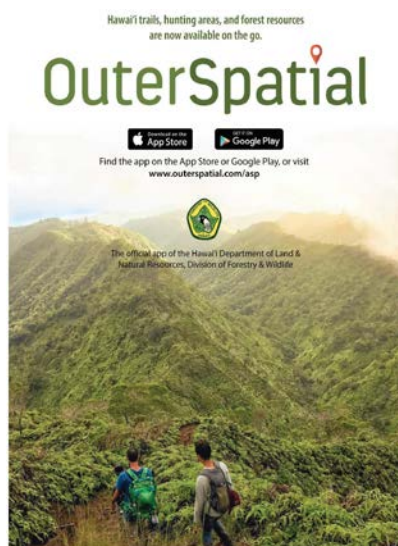
**Objective:** Assist vendors, such as Walmart and Island Archer with hunting license sales, payments, and collection of funds.

**Accomplishments:** During anticipated increase in hunting license sales traffic at these establishments, the clerical staff assisted with license sales and dissemination of information pertinent with upcoming seasons.

## Hunting Program Mobile Application

**Objectives:** Collect hunting activity data more efficiently and provide hunters with a more convenient process by allowing them to check in and out of public hunting areas and record animal harvest electronically.

**Accomplishment:** Continue contract administration and project development with Trailhead Labs, Inc., for the creation, deployment, and maintenance of a hunting and trail program mobile application. The mobile application will launch in November 2020



### Mile Marker 16 Shooting Range – Hawai‘i Island

*Objective:* Assist with safety enhancements of the Mile Marker 16 range.

*Accomplishments:* Existing side berms and backstops were significantly reinforced with 1,280 cubic yards of cinder to contain bullets and reduce the possibility of escaped projectiles. Portions of the range, including the entrance road were partially leveled.

A portion of the public hunting area at Mile Marker 16 on the Saddle Road was formally designated as a public shooting range by the Board of Land and Natural Resources on February 23, 2018. It was established with the intent of providing a location for the public to improve marksmanship and practice the safe and responsible use of firearms, as taught in Hunter Education classes. The Division of Conservation and Resources Enforcement and DOFAW continue to assist with maintenance and oversight of the range.

Total WRF Expenditure for Administration: Operating \$24,249.08/ Personnel 3,38.81

### Future Program Plans

1. Produce and distribute hunting licenses, stamps, and vendor booklets.
2. Utilize revenue from the sale of hunting tags, stamps, and fees to support the statewide game program.
3. Publish notification of game bird and game mammal hunting season announcements and Go Hunt Hawai‘i newsletter.
4. Maintain existing leases, licenses, and other access agreements that provide hunter access to non-DOFAW controlled hunting lands.
5. Acquire fee title or access easements for lands that provide opportunities for public hunting, public recreation, and wildlife management.
6. Continue the development of the Hunting and Trail mobile application to improve user experience while addressing feedback from app users after launch to inform additional improvements.
7. Put all hunting permits and applications on-line for easy access.

# **WILDLIFE REVOLVING FUND EXPENDITURES**

**Table 1.** Operating, personnel, claims, and contracts per branch or district.

<b>Oahu Administration</b>	<b>Expenditures &amp; Claims</b>	<b>Maui</b>	<b>Expenditures &amp; Claims</b>
Operating	\$ 24,249.08	Operating	\$ 24,194.95
Personnel	\$ 3,308.81	Personnel	\$ 27,042.14
Claims	\$ 5,781.71	Claims	
Contracts	\$	Contracts	
<b>Total</b>	<b>\$ 33,339.60</b>	<b>Total</b>	<b>\$ 51,237.09</b>
<b>Oahu</b>		<b>Molokai</b>	
Operating	\$ 42,649.84	Operating	\$ 20.50
Personnel	\$ 5,181.82	Personnel	
Claims		Claims	
Contracts		Contracts	
<b>Total</b>	<b>\$ 47,831.66</b>	<b>Total</b>	<b>\$ 20.50</b>
<b>West Hawaii</b>		<b>Lanai</b>	
Operating	\$ 537.00	Operating	\$ 69,736.83
Personnel		Personnel	\$ 78,190.14
Claims	\$	Claims	\$ 35,046.01
Contracts		Contracts	
<b>Total</b>	<b>\$ 537.00</b>	<b>Total</b>	<b>\$ 182,972.98</b>
<b>East Hawaii</b>		<b>Kauai</b>	
Operating	\$ 571.21	Operating	\$ 13,489.89
Personnel	\$ 61,091.04	Personnel	\$ 63,056.56
Claims		Claims	\$ 2,034.50
Contracts		Contracts	
<b>Total</b>	<b>\$ 66,662.25</b>	<b>Total</b>	<b>\$ 78,580.62</b>

**Table 2.** Fee schedule for hunting licenses, wildlife stamps, applications, permits, and tags for special or lottery hunts.

<b>Island</b>	<b>Item</b>	<b>Resident</b>	<b>Non-resident</b>
All islands statewide	Hunting License*	\$10	\$95
	Wildlife Conservation Stamp	\$10	\$10
	Game Bird Stamp	\$10	\$10
	Spring Turkey Tags	\$5	\$20
Kaua‘i	Black Tailed Deer Hunts Rifle Tag Application	\$5	\$5
	Rifle Tag	\$10	\$25
	Muzzleloader Permit-Tag	\$5	\$25
	Archery Permit Tag	\$5	\$25
	Feral Goat Hunts Rifle Lottery Tag Applications (Unit B)	\$5	\$10
	Rifle Lottery Tags (Unit B)	\$10	\$25
	Muzzleloader Permit-Tags (Units A & F)	\$5	\$25
	Annual Archery Permit (Units G, F, & K)	\$5	\$25
	Feral Pig Hunts Season Permit	\$5	\$25
	Special Hunts Application	\$5	\$5
	Goat/Deer/Pig Permit (Units E & H)	\$10	\$25
	Goat/Pig Animal Control (Unit G)	\$5	\$25
Lāna‘i	Mouflon Sheep Season Lottery Application	\$10	\$10
	Mouflon Sheep Season Tag	\$20	\$125
	Axis Deer Season Lottery Application	\$10	\$10
	Axis Deer Season Tag	\$20	\$125
Hawai‘i	Pu‘u Wa‘awa‘a Feral Sheep or Goat Tag	\$10	\$25
	Pu‘u Anahulu Feral Sheep or Goat Tag	\$10	\$25

\*Free to all Hawai‘i residents 65 years or older and to all persons with Hansen’s disease who are residents of Kalaupapa, Moloka‘i

## ATTACHMENT I: WILDLIFE REVOLVING FUND EXPENDITURE CATEGORIES

1. Development, improvement, and management of existing and new public hunting and game management facilities including installing or maintaining hunter access roads, checking stations, fences, gates, stiles, cattle guards, entry/safety/boundary signs and markers, parking lots, sanitary facilities, water tanks, and campsites.
2. Development, improvement, and management of existing and new wildlife sanctuary facilities including fences, moats, water control structures, pumps, ditches, nesting sites, holding pens, boardwalks, viewing kiosks, watering devices, parking lots, sanitary facilities, and entry and interpretive signs.
3. Wildlife habitat improvements including game bird and mammal watering units, food plots, vegetation clearing and mowing; non-game/endangered species enclosures, exclosures, noxious weed control, mowing and nest sites; and wildlife predator control, water quality testing, and rehabilitation.
4. Personnel hires for wildlife management and hunter education including Wildlife Management Assistants and General Laborers (for hunter checking station operation, public hunting area management, pest plant control, predator control, habitat development, and posting signs and markers), computer technicians (for public hunting lotteries), and hunter education specialists.
5. Wildlife management equipment including tractors, bulldozers, all-terrain vehicles, collecting arms, radios, outboard motors, small boats, binoculars, trucks, and 4-wheel drive vehicles.
6. Development and operation of public shooting ranges in conjunction with the Hunter Education Program.
7. Research, surveys, and inventories for game and non-game/endangered species, including rental of helicopters, infrared technology, temporary hires, equipment rental, materials and supplies, and contracts for studies (game birds, forest birds, waterbirds, seabirds, Hawaiian bat, owls, disease, genetics, food habits, ungulates, limiting factors, etc.).
8. Public education on wildlife management including development of the “Wilderness Watch” program, providing maps and area informational leaflets, interpretative facilities at game management areas and wildlife sanctuaries, and technical assistance to the public on wildlife management.
9. Rental of land for public hunting and wildlife management.
10. Law enforcement.