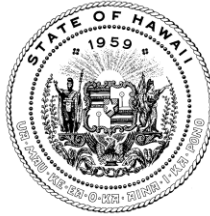


DAVID Y. IGE
GOVERNOR OF
HAWAII



SUZANNE D. CASE
CHAIRPERSON
BOARD OF LAND AND NATURAL RESOURCES
COMMISSION ON WATER RESOURCE MANAGEMENT

ROBERT K. MASUDA
FIRST DEPUTY

KALEO L. MANUEL
DEPUTY DIRECTOR - WATER

AQUATIC RESOURCES
BOATING AND OCEAN RECREATION
BUREAU OF CONVEYANCES
COMMISSION ON WATER RESOURCE MANAGEMENT
CONSERVATION AND COASTAL LANDS
CONSERVATION AND RESOURCES ENFORCEMENT
ENGINEERING
FORESTRY AND WILDLIFE
HISTORIC PRESERVATION
KAHOOLAWE ISLAND RESERVE COMMISSION
LAND
STATE PARKS

STATE OF HAWAII
DEPARTMENT OF LAND AND NATURAL RESOURCES

POST OFFICE BOX 621
HONOLULU, HAWAII 96809

Testimony of
SUZANNE D. CASE
Chairperson

Before the Senate Committee on
WAYS AND MEANS

Tuesday, February 25, 2020
12:40 PM

State Capitol, Conference Room 211

In consideration of
SENATE BILL 2755
RELATING TO PUEO RESEARCH

Senate Bill 2755 proposes to appropriate funds to the Department of Land and Natural Resources (Department) to support research, in collaboration with the University of Hawaii (UH), on a state-wide species assessment of the pueo or Hawaiian short-eared owl (*Asio flammeus sandwichensis*). **The Department supports this measure provided that its passage does not replace or adversely impact priorities indicated in the Executive Supplemental Budget request.**

The Department sees a need for an assessment on pueo distribution, abundance and limiting factors to inform the species status and improve conservation of the only native raptor that occurs on all of the main Hawaiian Islands. On the island of O'ahu the pueo is listed as endangered by the State, yet a comprehensive assessment of the species has never been conducted. In 2017, the Department, in collaboration with UH, conducted a study on O'ahu to examine the island-wide distribution of pueo. The results of this study provided important information on the distribution and habitats of pueo on O'ahu but was unable to provide a meaningful island-wide population estimate. A thorough species assessment both on O'ahu and state-wide will provide fundamental information that can be used when making decisions regarding protections under our State endangered species laws for all pueo populations and help identify needs for their conservation benefit. The information gained from such efforts will allow for better informed management decisions directly benefitting the pueo.

Thank you for the opportunity to comment on this measure.

DAVID Y. IGE
Governor

JOSH GREEN
Lt. Governor



State of Hawaii
DEPARTMENT OF AGRICULTURE
1428 South King Street
Honolulu, Hawaii 96814-2512
Phone: (808) 973-9600 FAX: (808) 973-9613

PHYLLIS SHIMABUKURO-GEISER
Chairperson, Board of Agriculture

MORRIS M. ATTA
Deputy to the Chairperson

TESTIMONY OF PHYLLIS SHIMABUKURO-GEISER
CHAIRPERSON, BOARD OF AGRICULTURE

BEFORE THE SENATE COMMITTEE ON WAYS AND MEANS

FEBRUARY 25, 2020
12:40 P.M.
CONFERENCE ROOM 211

SENATE BILL NO. 2722 SD1
RELATING TO A FOOD HUB PILOT PROGRAM

Chairperson Dela Cruz and Members of the Committee:

Thank you for the opportunity to testify on Senate Bill 2722 SD1, which requires the Department of Agriculture to establish a five-year food hub program to increase access to local food. It provides further for the award of grant funding to qualified applicants wishing to establish or expand a food hub, requires reports to the Legislature, and makes an appropriation.

The Department supports this measure provided it does not adversely impact the Department's priorities in the Executive Budget and offers comments and clarifying amendments.

Food hubs are facilities that facilitate the aggregation, storage, processing, distribution and marketing of locally grown produce, and may help to increase local food self-sufficiency and the doubling of local food production in Hawaii.

The Agribusiness Development Corporation's Whitmore Community Food Hub Master Plan illustrates the complexity of the food hub concept as evidenced by the scale of the central Oahu agricultural community that it will serve. The participation of farmers and their involvement in managing the food hub are fundamental to ensure that production, processing, packaging, marketing, shipment, value-adding and other functions will be effectively and beneficially utilized.

Additionally, this measure clarifies that an applicant seeking to launch a new food hub in an area where none exists shall have secured a physical location for the hub and



have drafted a detailed plan for the operation of a food hub. We believe that project planning and farmer engagement should be conducted before developing new or improving existing qualifying food hubs statewide.

The Department is aware of four food hubs on Oahu, four on Hawaii Island, and one each on Maui and Molokai, identified as follows:

- Oahu: Kahumana Farm Hub (Waianae), Farmlink Hawaii (North Shore), Kokua Kalihi Valley Cultural Food Hub (Kalihi), and Oahu Fresh (Honolulu);
- Hawaii Island: Adaptations (Kona), The Ulu Producers Cooperative (Kona), The Food Basket (Kona), and The Kohala Food Hub (Kohala);
- Maui: Local Harvest Food Hub (Kula); and
- Molokai: Sustainable Molokai.

These food hubs are providing jobs, representing hundreds of small to medium sized farms, serving thousands of customers, and producing over \$2.5 million in annual gross income.

The Department agrees that food hubs may become a more important link in the supply chain to channel more local food to the consumers and institutions of the State. This measure addresses the challenge of local small farmers to scale-up production by providing a pathway to the larger purchasers of safe and marginally processed, locally grown, fresh fruits and vegetables.

The Department offers the following amendments:

Page 2, lines 6-19

"SECTION 2. (a) There is established a five-year food hub pilot program, which shall be administered by the department of agriculture.

(b) The pilot program shall:

(1) Adopt the United States Department of Agriculture's working definition of "food hub," which means "a centrally located facility with a business management structure facilitating the aggregation, storage, processing, distribution, and/or marketing of locally/regionally produced food products;" and

(2) Award grant funding to qualified applicants for the **planning, feasibility studies, and** construction of critical

infrastructure to establish new food hubs and expand existing food hubs in each of the counties of Maui, Kauai, Hawaii, and Honolulu, including:"

Page 3, line 6 to page 4, line 9

"(c) The department of agriculture shall establish criteria for the award of initial start-up grant funding or subsequent expansion funding under the pilot program, including the following provisions:

(1) Priority shall be given to organizations with demonstrated experience in aggregation, washing, minimal processing, packaging, cold storage, and other value-additions for delivering local produce to local markets;

(2) Qualifying applicants shall include corporations, limited liability companies, partnerships, sole proprietorships, non-profit organizations, and agricultural cooperatives with requisite insurance requirements and a certificate of vendor compliance with Hawaii compliance express;

(3) Applicants seeking to launch new establishment of food hubs in areas where none currently exist shall have first secured a physical location for the food hub; ~~and~~ drafted a detailed plan for the food hub's operation and management; provide evidence of interest to engage with the food hub by agricultural operations in the area, ~~including;~~ identify activities in which the applicant intends to engage, such as serving as a marketplace for buying and selling, or providing certified kitchen space in which multiple farmers may share use of facilities for value-added product development; and"

Thank you for the opportunity to testify on this measure.



Date: February 21, 2020

To: The Honorable Donovan Dela Cruz, Chair
The Honorable Gilbert Keith-Agaran, Vice Chair
Members of the Senate Committee on Ways and Means

From: Lydi Bernal, Coordinator, Hawai'i Farm to School Hui

Re: SUPPORT for SB2722 SD1, Relating to a Food Hub Pilot Program

Hrg: February 25, 2020 at 12:40pm at Conference Room 211

Aloha and thank you for the opportunity to testify in **support of SB2722 SD1**, which requires the Hawai'i Department of Agriculture (HDOA) to establish a five-year food hub pilot program and provides for the awarding of grant funding to establish and expand food hubs.

The Hawai'i Public Health Institute (HIPHI) works to advance policy and systems change to reduce disparities and improve the health of Hawai'i residents. HIPHI is home to the Obesity Prevention Task Force¹ and the Hawai'i Farm to School Hui².

Through our extensive experience with strengthening Hawaii's farm to school movement over the past decade, it has become abundantly clear that **food hubs are an absolutely essential and key component to regenerating Hawaii's community food systems**, and thus to achieving food security and food self sufficiency in Hawai'i. This bill is critically important for supporting the sustainability and growth of small family farms (which constitute 95% of all farms in Hawai'i³) by significantly expanding their access to large institutional markets such as the Hawai'i Department of Education (HIDOE).

On January 30, 2020 the Hawai'i Farm to School Hui, HIDOE School Food Services Branch (SFSB), and partners hosted a **webinar for farmers and distributors** on supplying fresh and local produce to HIDOE. The turnout was impressive with over 120 registered participants. Importantly the three panelists representing those with experience sourcing local produce to HIDOE were from **community-based food hubs**, including the Kohala Food Hub, Hawai'i 'Ulu Cooperative, and Sustainable Molokai. Each entity serves as a regional aggregation center, sourcing from dozens of small family farms and supplying thousands of pounds of locally grown foods annually to HIDOE SFSB.

Thanks to the **strategic investments** made during the last several years by the Hawai'i State Legislature (including funding for the HDOA Hawai'i Farm to School Program, HIDOE SFSB Farm to School Coordinator, and HDOA Farm to State positions), and the focused efforts of a

multitude of community partners, we are beginning to see the first fruits of Hawaii's farm to school movement. We respectfully request that you to **please pass this bill as an essential next step** toward achieving our shared vision for food security and food self sufficiency in Hawai'i!

Me Ke Aloha,

Lydi Bernal

Coordinator, Hawai'i Farm to School Hui

Member, Obesity Prevention Task Force

Hawai'i Public Health Institute

¹ Created by the legislature in 2012, the **Obesity Prevention Task Force** is comprised of over 40 statewide organizations, and works to make recommendations to reshape Hawaii's school, work, community, and health care environments, making healthier lifestyles obtainable for all Hawai'i residents.

² The **Hawai'i Farm to School Hui** is a statewide network comprised of five island-level networks, community organizations, schools, state agencies, and other food systems stakeholders with a collective mission to strengthen Hawaii's farm to school movement. The three pillars of successful farm to school programs are 1) school gardens, 2) agriculture, culinary, nutrition, and food systems education, and 3) school food improvements through local food procurement. The Hawai'i Farm to School Hui formed in 2010 and became a program of HIPHI in 2017.

³ United States Department of Agriculture (USDA) **2017 Census of Agriculture**. Small farms are defined by USDA as earning less than \$250,000 in gross sales per year, which applies to 5,250 of 5,521 (95%) farms in Hawai'i. Importantly, 75% (3998 of 5316) of Hawaii's farms are one to nine acres in size.



P.O. Box 253, Kunia, Hawai'i 96759
Phone: (808) 848-2074; Fax: (808) 848-1921
e-mail info@hfbf.org; www.hfbf.org

February 25, 2020

HEARING BEFORE THE
SENATE COMMITTEE ON WAYS AND MEANS

TESTIMONY ON SB 2722, SD1
RELATING TO A FOOD HUB PILOT PROGRAM

Room 211
12:40 PM

Aloha Chair Dela Cruz, Vice Chair Keith-Agaran, and Members of the Committee:

I am Brian Miyamoto, Executive Director of the Hawaii Farm Bureau (HFB). Organized since 1948, the HFB is comprised of 1,800 farm family members statewide and serves as Hawaii's voice of agriculture to protect, advocate and advance the social, economic and educational interests of our diverse agricultural community.

The Hawaii Farm Bureau supports SB 2722, SD1, which requires the Department of Agriculture to establish a five-year food hub pilot program to increase access to local food and provides for the award of grant funding by qualified applicants wishing to establish or expand a food hub.

Small farmers typically do not have access facilities and infrastructure to aggregate, process, and distribute products to local consumers. The challenge to small growers is also complicated by stringent regulations of the Food Safety Modernization Act (FSMA), jeopardizing the ongoing viability of many small growers due to the costs of compliance.

In Hawaii, additional challenges to small farmers include high costs in land, labor, and energy, as well as limited access to water supply for irrigation. Food hubs are an important subset of food value chains. Many farmers and ranchers, especially small sized operations, often lack the capacity to access retail, institutional, and commercial foodservice markets on their own, and consequently miss out on the fastest growing segment of the local food market. By offering a combination of aggregation, distribution, and marketing services at an affordable price, food hubs make it possible for many producers to gain entry into new larger-volume markets that boost their income and provide them with opportunities for scaling up production.

Thank you for this opportunity to testify on this important subject.



2/21/2020

TESTIMONY IN STRONG SUPPORT OF SB2722 SD1 BEFORE THE COMMITTEE ON WAYS AND MEANS

Aloha Chair Donovan M. Dela Cruz, Vice- Chair Senator Gilbert S.C. Keith-Agaran and members of the Committee On Ways and Means:

Alternative Structures International (dba Kahumana Organic Farms), a 501(c) 3 non-profit organization operating on 50 acres in Lualualei Valley in Waianae. Since its establishment in 1974, Kahumana has integrated social services with training venues and social ventures that work toward three goals: 1. Ending Local Family Homelessness, 2. Providing Services for People With Developmental Disabilities, and 3. Lowering Hawaii's Dependence on Imported Food.

In 2017, Kahumana launched Kahumana Farm Hub (KFH) with the mission of connecting local growers with local markets. The hub facilitates sales on behalf of small farmers and backyard growers on the Leeward Coast of Oahu. The hub has been a powerful reminder of how Hawaii

residents can contribute to food security. In the first 2 years KFH generated a total of \$280,499 of which \$204,325 was paid directly to over 100 growers (see image 1). KFH shows that multiple small farmers and backyard growers create a resilient network illustrating the strength in numbers of backyard grower and their contribution to Hawaii's local food supply.



Image 1- Kahumana Farm Hub. In 2017, The Grants-in-Aid funded Hawaii Farmers Union Foundation grant to strengthen community food hubs among them the Kahumana Farm Hub. Currently, KFH supports over 100 Ohana growers from the Leeward Coast of Oahu by assisting growers with marketing and sale of their locally grown fruits and vegetables.

Sincerely,

Christian Zuckerman
Farm Director, Kahumana Organic Farms
86-660 Lualualei Homestead Road, 96792, Waianae HI

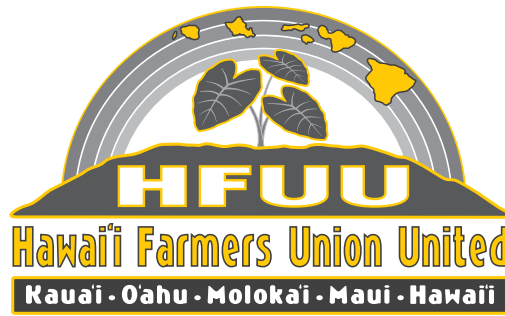
Vincent Mina
President HFUU-HFUF

Anny Bruch
Vice President &
Kaua'i Chapter Pres.

David Case
Secretary

Annie Alvarado
Treasurer

~~~~~>~~~~~



TESTIMONY IN STRONG SUPPORT OF SB2272 SD1  
before the Committee on Ways and Means  
on Tuesday, 02-25-20 12:40PM in conference room 211.

**Christian Zuckerman**  
Wai'anae, O'ahu

**Vincent Kimura**  
Waimanalo, O'ahu

**Brynn Foster**  
North Shore, O'ahu

**Kaipo Kekona**  
Lahaina, Maui

**Bobby Pahia**  
Kahalawai, Maui

**John Dobovan**  
Haleakala, Maui

**Matthew Van Paepghem**  
Hana, Maui

**Dash Kuhr**  
Kohala, Hawai'i

**Maureen Datta**  
Kona, Hawai'i

**Steve Lund**  
Puna, Hawai'i

**Drake Weinert**  
East Hawai'i

**Matt Drayer**  
Ka'u, Hawai'i

Aloha Sen. Donovan M. Dela Cruz, Chair, Sen. Gilbert S.C. Keith-Agaran, Vice Chair,

HFUU is a 501(c)(5) agricultural advocacy, nonprofit representing a network of over 2,500 family farmers and their supporters organized as 13 Chapters in the four Ha-wai'i Counties. In 2017, the Legislature awarded Hawaii Farmers Union Foundation a Grant in Aid project to Strengthen Regional Food Hubs in Hawai'i. As part of that project, the coordinator, Dr. Saleh Azizi, facilitated a focus group among multiple food hubs to improve our understanding of the resources needed for food hubs to be sustainable and respond to demand for local food, especially by the Farm-to-State initiative. The result of the focus group, which was participated by a majority of Hawaii's existing food hubs, are now in front of you, a Food Hub Pilot program to support existing and new food hubs in all of Hawaii's counties.

Almost all food hub developments in Hawaii were launched by family farmers to help other small-scale family farming. Food hubs are entities in or nearby farm communi-ties that support small farmers with aggregation, processing, marketing and sale of locally grown food. Research by Dr. Noa Lincoln at UH Manoa suggest that much of the local food grown by Hawaii's residents and small farmers is unaccounted for and often overlooked in official reporting about local food production. The dark number of unaccounted local food is now being captured by food hubs all over Hawaii. Less than ten food hubs that are affiliated with HFUU facilitate marketing, sale and de-livery of local food on behalf of over 500 family farmers. A recent survey of 8 food hubs by Hawaii Farmers Union United shows that they represent over 650 small and medium farms and generate 2.7 million in income annually in local food sales.

HAWAII FARMERS UNION UNITED

Vincent Mina, President

**SB-2722-SD-1**

Submitted on: 2/21/2020 8:56:18 PM

Testimony for WAM on 2/25/2020 12:40:00 PM

| Submitted By | Organization                     | Testifier Position | Present at Hearing |
|--------------|----------------------------------|--------------------|--------------------|
| autumn ness  | Testifying for Beyond Pesticides | Support            | No                 |

Comments:



P.O. Box 4445 Hilo, Hawaii 96720  
808-969-2012  
FEIN#: 99-0293381

Recycle Hawaii stands in full support of SB2272 SD1 which requires the Department of Agriculture to establish a five-year food hub pilot program. While there has been a great deal of testimony submitted touting the many ways food hubs support Hawaii's food security goals, we would like to emphasize the ways they support our equally important waste reduction goals.

Any strategy that reduces our dependency on imported food also allows us to take responsibility for how our food gets packaged and delivered. Food hubs create opportunities for the development of environmentally responsible food delivery systems that rely on reusable glass and metal containers rather than highly wasteful, single-use plastic packaging. Food hubs can also serve as handy collection centers for the waste organic materials that we desperately need to keep from entering Hawaii's landfills.

By laying the foundation for a distributed system of small scale food producers, SB2272 lays the foundation for a far less wasteful society.

Please vote to make this future a reality.

**SB-2722-SD-1**

Submitted on: 2/22/2020 11:05:42 AM

Testimony for WAM on 2/25/2020 12:40:00 PM

| <b>Submitted By</b>   | <b>Organization</b> | <b>Testifier<br/>Position</b> | <b>Present at<br/>Hearing</b> |
|-----------------------|---------------------|-------------------------------|-------------------------------|
| Jacqueline S. Ambrose | Testifying for HFUU | Support                       | No                            |

Comments:

**SB-2722-SD-1**

Submitted on: 2/23/2020 8:53:12 AM

Testimony for WAM on 2/25/2020 12:40:00 PM

| <b>Submitted By</b> | <b>Organization</b>                         | <b>Testifier<br/>Position</b> | <b>Present at<br/>Hearing</b> |
|---------------------|---------------------------------------------|-------------------------------|-------------------------------|
| Suellen Barton      | Testifying for Maui<br>Farmers Union United | Support                       | No                            |

Comments:

February 23, 2020



WAM COMMITTEE

HEARING DATE:

Monday, February 24, 2020 at 12:40 p.m.

PLACE:

Conference Room 211

State Capitol

415 South Beretania Street

***Testimony in support of SB2722 SD1***

Farm Link Hawai'i is a food hub that directly supports over 100 farmers, ranchers and producers throughout the state of Hawai'i. Since 2015, Farm Link's online marketplace and delivery service have been making it easy to support local farms. Farm Link currently delivers to commercial buyers, including Foodland and Whole Foods Market in addition to 100+ restaurants, caterers, and schools. We also allow household buyers to order for pickup at designated locations around O'ahu.

I am writing in strong support of SB2722 SD1 to establish a five-year food hub pilot program to increase access to local food. Food hubs operate on extremely thin margins. Establishing and growing a food hub require an extraordinary amount of capital and support to have a chance at survival. The proposed SB2722 SD1 would provide grant assistance to food hubs to reduce risk and increase their impact.

Farm Link Hawai'i has relied heavily on federal and state grants to launch and continue to scale. We would not exist without such assistance and are continually looking for additional support in order to reach financial viability. Please consider passing SB2722 SD1 to help us continue to do work to increase local food production and consumption.

Sincerely,

A handwritten signature in dark ink, appearing to read "R Barreca", with a long, sweeping underline that extends to the right.

Robert Barreca  
Founder and CEO  
Farm Link Hawai'i

**SB-2722-SD-1**

Submitted on: 2/24/2020 2:38:59 AM

Testimony for WAM on 2/25/2020 12:40:00 PM

| Submitted By   | Organization                           | Testifier Position | Present at Hearing |
|----------------|----------------------------------------|--------------------|--------------------|
| VINCENT KIMURA | Testifying for Waimanalo Farmers Union | Support            | Yes                |

Comments:

Strongly support this bill:

Plantations have come and gone, though effective at monocropping, the focus is export and not to support a local, diverse food supply. When we look at the current local ecosystem of [7,328 farms](#) ([USDA Ag Census data](#)), [89% \(6,561 farms\) are small by acreage \(<50 acres\)](#), and [92% or 6,797](#) make less than \$100K (4,701 or 64% make less than \$25K) our only chance of doubling food production is to focus on connecting the 6,561 small to medium-sized farms and have them contract grow and aggregate using food hubs and organize through cooperatives.

The state of Hawaii has over 800,000 acres of Ag land not in production, as all state leadership agrees, the key to this is labor. But do we rely on H2A migrant labor which presents many more issues with the current federal administration, and assimilation is a major challenge as well as that money leaving the state? Who will farm the land? Small Farmers are key to this, food aggregation and cost-share through food hubs are the only way we can achieve doubling food production. If you need a successful use case, there are many - national good food network and the national food hub network, both managed by the Wallace Center. Internationally, look to the Dutch.

Respectfully,

Vincent Kimura

President of the Waimanalo Hawaii Farmers Union

**SB-2722-SD-1**

Submitted on: 2/24/2020 10:57:18 AM

Testimony for WAM on 2/25/2020 12:40:00 PM

| Submitted By | Organization                         | Testifier Position | Present at Hearing |
|--------------|--------------------------------------|--------------------|--------------------|
| NANCY JONES  | Testifying for The Jones Family Farm | Support            | No                 |

Comments:

Wednesday, Feb.25, 2020 at 12:40 PM / Senate Committee on Agriculture

**TESTIMONY IN STRONG SUPPORT OF SB 2722, SD 1**

Aloha Chair Dela Cruz, Vice-Chair Keith-Agaran and Honorable Committee Members:

Our testimony fully supports SB 2722, SD 1, as amended, to establish a food hub pilot program beginning in fiscal year 2020 and extending until 2025. In particular, we support the idea of increasing access to locally grown food and improving Hawai'i's food security via this food hub pilot program as refined through SB2722, SD1's proposed grant-award process. This bill as amended, will allow food hubs to not only initiate operations, but will also allow for food hubs to undertake any needed facility upgrades and expansion.

Small-family farmers experience many difficulties along the path to final markets. These include lack of: market intelligence, pricing information, proper crop selection based on market trends, technical support, and post-harvest handling facilities (packing, grading, food-safety certification, packaging, etal.) However, qualified, small-scale food hubs like those servicing a limited number of growers – for example, Kahumana Organic Farm – provide many of these otherwise unavailable services and market opportunities to local farmers.

Currently the ten (10) food hubs that operate statewide represent approximately 660 small to medium farm operations. These food hubs serve all Hawai'i Department of Education schools, seven (7) hospitals, over 200 restaurants/hotels and over 1,000 families with additional sales. In addition, Hawai'i's food hubs provide over 25 full-time and 39 part-time paid positions, conduct periodic farmer trainings, provide much-needed emergency food distribution, in addition to numerous other food-related services that benefit Hawai'i's population.

Typical small farmers cannot access major local supermarket chains or even small supermarkets as they may lack of sufficient quantities to approach these markets AND also due to competition from other small farmers in a 10-mile radius. Secondly, these farmers may have no way of knowing about fair pricing. In addition, many of these same



farmers also do not have access to the all-important cold-chain to preserve produce quality and shelf-life. It is not unusual for farmers to lose up to 30-percent of their harvested crops due to lack of cold chain facilities. Packaging and specialty markets that pay higher prices for locally-grown produce are also key features of food hubs that can assist Hawai'i's local growers and improve food security for the State.

Accordingly, there is a definite need to financially support existing food hub facilities like Kahumana and expand food hubs in counties like Maui and Kaua'i that could benefit more local growers tremendously. For all of the above reasons, we respectfully urge your committee to pass this bill with sufficient grant funding for qualified applicants allocation to -- \$1 million or more per County. We also support the Hawai'i Department of Agriculture's proposed amendments since they would ultimately administer this program. Thank you very much for this opportunity to present this testimony supporting SB 2722, SD 1 and Hawai'i's small farmers.

Warm aloha from the Jones Family

Wai'anae Farm, P.O. Box 1462, Wai'anae, HI 96792/Tel: 808-228-3450



Email: [communications@ulupono.com](mailto:communications@ulupono.com)

SENATE COMMITTEE ON WAYS & MEANS  
Tuesday, February 25, 2020 — 12:40 p.m. — Room 211

**Ulupono Initiative supports SB 2722 SD 1, Relating to a Food Hub Pilot Program.**

Dear Chair Dela Cruz and Members of the Committee:

My name is Amy Hennessey, and I am the Senior Vice President of Communications & External Affairs at Ulupono Initiative. We are a Hawai'i-based impact investment firm that strives to improve our community's quality of life by creating more locally produced food; increasing affordable clean renewable energy and transportation options; and better managing waste and fresh water resources.

**Ulupono supports SB 2722 SD 1**, which requires the Department of Agriculture to establish a 5-year food hub pilot program to increase access to local food.

Ulupono supports the efforts of food hubs statewide as they serve as critical aggregation, food processing, and distribution for small farmers to access local markets. By increasing local market accessibility, small farmers will be able to provide a fresh, healthy product for consumers statewide. According to the 2017 USDA NASS Census of Agriculture, of Hawai'i's 7,328 farms statewide, 66%, or 4,868 farms, are between 1–9 acres and 78%, or 5,701 farms, produce less than \$25,000 in sales. Hawai'i's agricultural producer majority is small farmers. State supported food hubs allow Hawai'i's producers the opportunity to compete with local markets while also remaining financially viable.

Thank you for this opportunity to testify.

Respectfully,

Amy Hennessey, APR  
Senior Vice President, Communications & External Affairs

*Investing in a Sustainable Hawai'i*



**HAWAII APPLESEED**  
CENTER FOR LAW & ECONOMIC JUSTICE

**LATE**

Testimony of Hawai'i Appleseed Center for Law and Economic Justice  
In Support of SB 2722 SD1 – Relating to a Food Hub Pilot Program  
Senate Committee on Ways and Means  
Tuesday, February 25, 2020, 12:40 PM, in conference room 211

---

Dear Chair Dela Cruz, Vice Chair Keith-Agaran, and members of the Committee:

Thank you for the opportunity to testify in **SUPPORT** of SB 2722, SD1 which creates a food hub program in the Department of Agriculture.

The U.S. Department of Agriculture defines food hubs as facilities that “facilitate the aggregation, storage, processing, distribution, and/or marketing of locally produced food products.” These facilities are a critical yet undervalued piece of the local food system infrastructure.

Hawai'i Appleseed believes it is important that low-income residents have access to the same standards of food quality and nutrition as wealthier residents. Unfortunately, the lack of infrastructure for local food production makes lower income markets more difficult for Hawai'i farmers to reach. This creates an inequitable system, where only affluent households have access to fresh, local ingredients, and lower income households must rely on nutrient-poor processed foods, exacerbating the health disparities between higher and lower income individuals.

Food hubs are an economic development tool for rural communities. A recent survey of Hawai'i food hubs, conducted by the Hawai'i Farmers Union United, found that most existing food hubs in the state serve low-income populations, including direct sales to families who rely on SNAP-EBT, and aggregation of food for schools with a high proportion of students who are eligible for free and reduced-price meals. Over the past five years, they have brought in nearly \$6 million in outside investments, most of which has been channeled into local infrastructure, and have created over 60 jobs.

Local food production is an important goal, but we often place all the emphasis on the “production” end of the supply chain, while ignoring all of the other steps needed to get those products to local markets. Farmers need market infrastructure if they are to reach local families, and food hubs are a critical piece of that infrastructure.

We appreciate your consideration of this testimony, and urge you to pass SB 2722.

---

*Hawai'i Appleseed is committed to a more socially just Hawai'i, where everyone has genuine opportunities to achieve economic security and fulfill their potential. We change systems that perpetuate inequality and injustice through policy development, advocacy, and coalition building.*



**MAUI**  
CHAMBER OF COMMERCE  
VOICE OF BUSINESS

**LATE**

**HEARING BEFORE THE SENATE COMMITTEE ON WAYS AND MEANS  
HAWAII STATE CAPITOL, SENATE CONFERENCE ROOM 224  
WEDNESDAY, FEBRUARY 5, 2020 AT 1:15 P.M.**

To The Honorable Donovan M. Dela Cruz, Chair;  
The Honorable Gilbert S.C. Keith-Agaran, Vice Chair; and  
Members of the Committee on Ways & Means,

**TESTIMONY IN SUPPORT OF SB2722 RELATING TO  
A FOOD HUB PILOT PROGRAM**

Aloha, my name is Pamela Tumpap and I am the President of the Maui Chamber of Commerce, with approximately 650 members. I am writing share our support of SB2722.

The farming community is changing and in the past, we had stronger co-ops who assisted with marketing, production and distribution. We appreciate and support this bill to create a food hub pilot program and that the requirements include food hubs for all counties. Food hubs would help local farmers and ranchers, food manufacturers and the community.

However, the \$1,000,000 appropriation for the whole state equates to \$250,000 per county. We feel it will be difficult to build the type of facility described in the bill for this amount. This is also dependent upon what types of local foods are being processed in this facility as meat, fruits and leafy greens are all handled differently.

Further, since this is a 5-year pilot program, we believe it would be valuable to include a deadline to have a facility up and running earlier in the pilot. For example, if it takes 4 years to build a facility, that would only give 1 year to assess the operation and effectiveness of the program.

We appreciate the opportunity to testify on this matter and ask that this bill be passed.

Sincerely,

Pamela Tumpap  
President

To advance and promote a healthy economic environment for business, advocating for a responsive government and quality education, while preserving Maui's unique community characteristics.

**SB-2722-SD-1**

Submitted on: 2/25/2020 10:04:35 AM

Testimony for WAM on 2/25/2020 12:40:00 PM

**LATE**

| Submitted By | Organization                                                   | Testifier Position | Present at Hearing |
|--------------|----------------------------------------------------------------|--------------------|--------------------|
| Harriet Witt | Testifying for Hawaii Farmers Union United - Haleakala Chapter | Support            | No                 |

## Comments:

If we want to free ourselves from our dangerous dependence on the mainland for our food, we need to support our farmers by giving them access to local markets. In other words, we need you to support this bill. Mahalo!

**SB-2722-SD-1**

Submitted on: 2/20/2020 6:04:22 PM

Testimony for WAM on 2/25/2020 12:40:00 PM

| <b>Submitted By</b> | <b>Organization</b> | <b>Testifier<br/>Position</b> | <b>Present at<br/>Hearing</b> |
|---------------------|---------------------|-------------------------------|-------------------------------|
| cheryl B.           | Individual          | Support                       | No                            |

Comments:

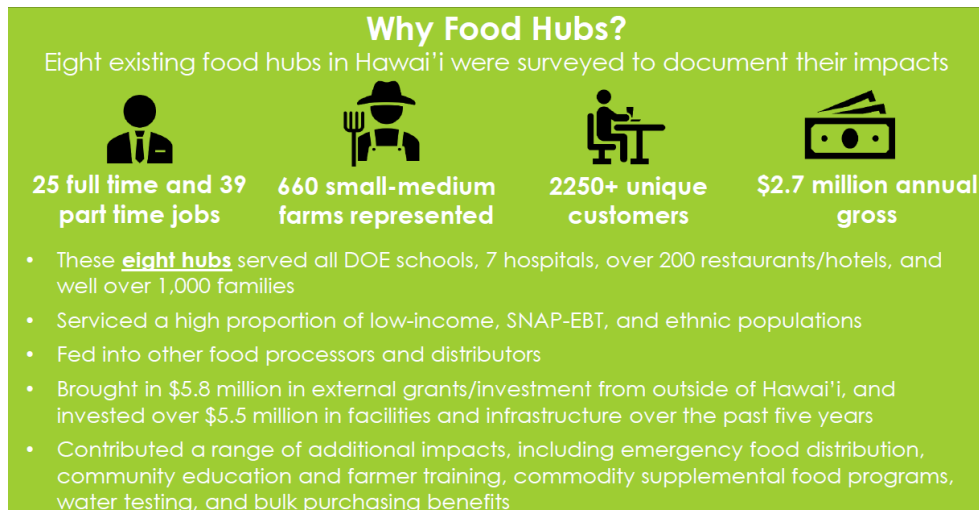
I support

2/21/2020

## TESTIMONY IN STRONG SUPPORT OF SB2722 SD1 BEFORE THE COMMITTEE ON WAYS AND MEANS

Aloha Chair Donovan M. Dela Cruz, Vice- Chair Senator Gilbert S.C. Keith-Agaran and members of the Committee On Ways and Means:

A recent survey of 8 food hubs by the Hawai'i Farmers Union United show that they represent over 650 small and medium farms and generate 2.7 million in income annually in local food sales (see image below).



By way of introduction, I am Saleh Azizi, and I am the Community Economic Development Coordinator at Kahumana Organic Farms, an organization operating for 40 years in Wai'anae to provide services to the most vulnerable members of our community, combat homelessness, provide service for people with disabilities and lower Hawaii's dependence on imported foods through sustainable agriculture.

In 2019, I worked with the Hawaii Farmers Union Foundation as a Food Hub Coordinator. I facilitated meetings with ten existing food hubs to document the obstacles they face in their journey to expand operations and services for the benefit of small farmers who grow local food for Hawaii's consumers. The observations and recommendations compromised a central part of my PhD. Dissertation that was awarded in 2019 by the Department of Urban and Regional Planning at University of Hawaii at Manoa.

Food hubs have positive effects on economic development far beyond facilitating local market connections for small farmers. Those benefits include creating culturally meaningful jobs in rural areas for residents and more opportunities for construction companies hire for expansion of facilities.

Saleh Azizi Fardkhales, PhD

808-383 5224

[azizi@hawaii.edu](mailto:azizi@hawaii.edu)

**SB-2722-SD-1**

Submitted on: 2/21/2020 8:43:22 PM

Testimony for WAM on 2/25/2020 12:40:00 PM

| <b>Submitted By</b> | <b>Organization</b> | <b>Testifier<br/>Position</b> | <b>Present at<br/>Hearing</b> |
|---------------------|---------------------|-------------------------------|-------------------------------|
| Linda Hastings      | Individual          | Support                       | No                            |

Comments:



**SB-2722-SD-1**

Submitted on: 2/21/2020 8:59:21 PM

Testimony for WAM on 2/25/2020 12:40:00 PM

| <b>Submitted By</b> | <b>Organization</b> | <b>Testifier<br/>Position</b> | <b>Present at<br/>Hearing</b> |
|---------------------|---------------------|-------------------------------|-------------------------------|
| Raphiell Nolin      | Individual          | Support                       | No                            |

Comments:

I strongly support local food hubs in Hawaii

**SB-2722-SD-1**

Submitted on: 2/21/2020 9:09:40 PM

Testimony for WAM on 2/25/2020 12:40:00 PM

| <b>Submitted By</b> | <b>Organization</b> | <b>Testifier<br/>Position</b> | <b>Present at<br/>Hearing</b> |
|---------------------|---------------------|-------------------------------|-------------------------------|
| Helmut Klauer       | Individual          | Support                       | No                            |

Comments:

I need away to distribute my produce Island wide.

**SB-2722-SD-1**

Submitted on: 2/21/2020 10:54:59 PM

Testimony for WAM on 2/25/2020 12:40:00 PM

| <b>Submitted By</b> | <b>Organization</b> | <b>Testifier<br/>Position</b> | <b>Present at<br/>Hearing</b> |
|---------------------|---------------------|-------------------------------|-------------------------------|
| Karen Winslow       | Individual          | Support                       | No                            |

Comments:

**SB-2722-SD-1**

Submitted on: 2/22/2020 12:11:56 AM

Testimony for WAM on 2/25/2020 12:40:00 PM

| Submitted By | Organization | Testifier Position | Present at Hearing |
|--------------|--------------|--------------------|--------------------|
| vincent mina | Individual   | Support            | No                 |

## Comments:

I am a family farmer of 26 years and founding member of HFUU. My wife and I farm Kahanu Aina Greens which has evolved over the years to expand into a profitable entity by paying attention and focusing on the efficiency in growing our business. One aspect of that efficiency was to put in a walk in chill and cold DOH certified processing area. This enabled us to ramp up our production within our operation to the point of it being efficient and productive to serve our accounts needs. It basically became a food hub of processing harvested greens while chilling them down before delivery. Without these two components we would have never made it to the place we are today. At the time we were able to get these components through a agricultural development grant ADP from the federal government. This food hub bill will represent an important step to the development of a whole system of agriculture in process and cold storage. This will support those farmers who need to expand in their farms evolution, providing agricultural value to the community.

**SB-2722-SD-1**

Submitted on: 2/22/2020 7:21:18 AM

Testimony for WAM on 2/25/2020 12:40:00 PM

| <b>Submitted By</b> | <b>Organization</b> | <b>Testifier<br/>Position</b> | <b>Present at<br/>Hearing</b> |
|---------------------|---------------------|-------------------------------|-------------------------------|
| Barbara Best        | Individual          | Support                       | No                            |

Comments:

great for food sustainability - such a worthy goal

**SB-2722-SD-1**

Submitted on: 2/22/2020 8:49:16 AM

Testimony for WAM on 2/25/2020 12:40:00 PM

| <b>Submitted By</b> | <b>Organization</b> | <b>Testifier<br/>Position</b> | <b>Present at<br/>Hearing</b> |
|---------------------|---------------------|-------------------------------|-------------------------------|
| Dennis F Lokmer     | Individual          | Support                       | No                            |

Comments:

**SB-2722-SD-1**

Submitted on: 2/22/2020 9:46:24 AM

Testimony for WAM on 2/25/2020 12:40:00 PM

| <b>Submitted By</b> | <b>Organization</b> | <b>Testifier<br/>Position</b> | <b>Present at<br/>Hearing</b> |
|---------------------|---------------------|-------------------------------|-------------------------------|
| Ken Stover          | Individual          | Support                       | No                            |

Comments:

**SB-2722-SD-1**

Submitted on: 2/22/2020 3:49:10 PM

Testimony for WAM on 2/25/2020 12:40:00 PM

| <b>Submitted By</b> | <b>Organization</b> | <b>Testifier<br/>Position</b> | <b>Present at<br/>Hearing</b> |
|---------------------|---------------------|-------------------------------|-------------------------------|
| Thomas Craig        | Individual          | Support                       | No                            |

Comments:



Andre de Almeida  
86-660 Lualualei Homestead RD  
Waianae, HI 96792

Hawaii State Legislature  
State Capitol  
415 South Beretania ST  
Honolulu, HI 96813

February 23, 2020

TESTIMONY IN STRONG SUPPORT OF SB 2722 SD1 BEFORE SENATE COMMITTEE  
ON AGRICULTURE AND ENVIRONMENT

As an active apprentice of Kahumana's Farm Hub I strongly support SB 2722 SD1. On the day to day life at Kahumana's Farm hub I get to interact with each hub member that comes in to get cash for their produce. Some hub members rely on the farm hub to make their lives a little easier. For instance, there is a hub member whose husband recently has been fighting cancer and she does not get the chance to leave her property to sell her bananas. So we instead go to her to make her life a little easier and that way she gets to spend time with her crops and family.

Another example, is a family that goes hiking in the valley and the mountains. The father and son duo enjoy the time together while foraging for fruits to bring to the farm hub. Not only is this family enjoying quality time together in nature, they are getting food for themselves and exchanging some for cash to help with expenses.

Whether families are getting cash to help fill up their gas tanks, or help with the expenses at home, one thing i'm sure is that the farm hub is making people's lives better with fruits that would normally just go to waste. For that reason I firmly believe that SB 2722 SD1 should pass in order for small farms and families to improve their lives.

Sincerely,

Andre de Almeida  
(808)670-4804

**SB-2722-SD-1**

Submitted on: 2/23/2020 2:17:19 PM

Testimony for WAM on 2/25/2020 12:40:00 PM

| Submitted By     | Organization | Testifier Position | Present at Hearing |
|------------------|--------------|--------------------|--------------------|
| Candace C Casper | Individual   | Support            | No                 |

## Comments:

I fully support this measure! It is even more necessary in remote places like K'au, where we live. Please move forward with this measure! We need more locally produced food, and this will help us move forward.

**SB-2722-SD-1**

Submitted on: 2/23/2020 7:52:28 PM

Testimony for WAM on 2/25/2020 12:40:00 PM

| <b>Submitted By</b> | <b>Organization</b> | <b>Testifier<br/>Position</b> | <b>Present at<br/>Hearing</b> |
|---------------------|---------------------|-------------------------------|-------------------------------|
| Sherry Pollack      | Individual          | Support                       | No                            |

Comments:

**SB-2722-SD-1**

Submitted on: 2/23/2020 10:10:43 PM

Testimony for WAM on 2/25/2020 12:40:00 PM

| <b>Submitted By</b> | <b>Organization</b> | <b>Testifier<br/>Position</b> | <b>Present at<br/>Hearing</b> |
|---------------------|---------------------|-------------------------------|-------------------------------|
| Paul Marshall       | Individual          | Support                       | No                            |

Comments:

This bill is a much-needed step toward food self-sufficiency for Hawaii. I strongly support it and urge you to move it forward.

Thank you,

Paul Marshall



67-332 Kaiea Pl.  
Waialua, HI 96791-  
9501  
808-383-4481  
[www.NSEVP.org](http://www.NSEVP.org)

February 24, 2020

TESTIMONY IN SUPPORT

**SUBJECT:** Support for SB2722 – Food Hub Pilot Program

(Date/Time of Hearing: 2/25/2020 at 12:40 p.m.)

Dear Chair Dela Cruz, Vice Chair Keith-Agaran and members of the committee,

On behalf of the North Shore Economic Vitality Partnership (North Shore EVP), I would like to extend our full support of SB2722, which will establish a five-year food hub pilot program within the Department of Agriculture.

The North Shore EVP was formed in 2015 as a result of a comprehensive, community-based economic analysis that identified the need for a food hub to fill serious gaps in the food supply chain of the North Shore region of Oahu. Our non-profit organization worked with community leaders to develop realistic strategic plans focused on securing that critical infrastructure and providing new opportunities for ag and ag-tourism businesses and creation of new jobs in agriculture in the region.

As we started planning for a food hub we became aware of the Food Safety & Modernization Act (FSMA) and the impact that law would have on the operations of the facility. Specifically, we anticipated that the target markets of the food hub (schools, hotels, etc.) would eventually require documentation of food safety practices from the growers. USDA and Hawaii Department of Agriculture data indicated that very few farms in Hawaii had such training and documentation.

We subsequently started a USDA GroupGAP program that allows groups of farms to work together to obtain their USDA Harmonized GAP certification and spread the cost savings across all members of the group. In December 2019 we certified 2 more farms on Oahu and in January 2020 the program successfully passed its USDA Harmonized GAP audit. We are now working with farms on Oahu, Hawaii Island, and Kauai. We are the 15<sup>th</sup> GroupGAP program in the country and are currently the only food safety training program focused on farm certification and FSMA compliance in the state.

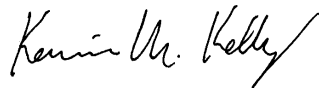
With the GroupGAP program now operating statewide we have recently turned our attention back to the North Shore regional food hub. Our research indicates that in Hawaii a viable food hub will require approximately 7,500ft<sup>2</sup> of floor space (2,000ft<sup>2</sup> refrigerated), 7-10 employees, 1-2 trucks and gross revenue of ~\$1.5 million or more. Contrary to the legislature's findings, there are in fact several avenues of federal funding available for construction of such facilities including USDA Rural Business Development grants, USDA Community Facilities grant/loan packages, and USDA Rural Energy grants to name but a few. In addition, the state has several programs that would directly benefit a food hub project including Enterprise Zones and DBEDT's Manufacturing Assistance Program (MAP).

While we applaud the legislature for its recognition of the role food hubs can play in meeting state goals of doubling the food supply and promoting food resiliency in Hawaii,

we also recognize that regions across the state have similar challenges and that there is not a silver bullet that will address the needs of every community. We therefore ask that this bill be amended to include funding for food hub planning as one of the initial start-up grant priority areas. As alluded to above funding and construction of a food hub at the scale needed to insure profitability requires significant coordination of stakeholders and resources. It requires feasibility studies and master planning. And, because of the competitive nature of some awards and grant funding cycles, the entire process can be expected to take from 2-3 years before construction begins.

SB2722 is a positive step in the right direction for establishing a network of food hubs across the state that can open new markets for small farms, increase the availability of fresh, locally grown fruits and vegetables and expand the tax base through new job creation and import substitution. North Shore EVP strongly supports this bill.

Sincerely,

A handwritten signature in black ink, reading "Kevin M. Kelly" with a stylized flourish at the end.

Kevin Kelly  
President & CEO  
North Shore EVP

**SB-2722-SD-1**

Submitted on: 2/24/2020 1:59:52 PM

Testimony for WAM on 2/25/2020 12:40:00 PM

**LATE**

| Submitted By | Organization | Testifier Position | Present at Hearing |
|--------------|--------------|--------------------|--------------------|
| Karen Reid   | Individual   | Support            | No                 |

## Comments:

I strongly urge you to vote in favor of SB2722 SD1 to support necessary food hubs to provide local produce to local constituents. Mahalo!

[SB2722 SD1](#)

**SB-2722-SD-1**

Submitted on: 2/25/2020 7:58:25 AM

Testimony for WAM on 2/25/2020 12:40:00 PM

**LATE**

| Submitted By | Organization | Testifier<br>Position | Present at<br>Hearing |
|--------------|--------------|-----------------------|-----------------------|
| Katie Folio  | Individual   | Support               | No                    |

Comments:



**SB-2722-SD-1**

Submitted on: 2/25/2020 8:19:49 AM

Testimony for WAM on 2/25/2020 12:40:00 PM

**LATE**

| Submitted By    | Organization | Testifier Position | Present at Hearing |
|-----------------|--------------|--------------------|--------------------|
| Jennifer Maydan | Individual   | Support            | No                 |

Comments:

I support SB 2722.

- Food hubs are critical to expanding farm to school/farm to state by allowing small farmers (the majority of Hawaii's farmers) to aggregate, store, wash/process, pack, market, and distribute produce and other foods and to bid on larger contracts offered by state institutions (schools, hospitals, prisons). Food hubs support existing and new farmers by relieving/sharing the burden of these significant challenges.
- These bills will expand current efforts and increase government investment in farm to school/farm to state and the regeneration of Hawaii's community food systems.

**SB-2722-SD-1**

Submitted on: 2/25/2020 9:08:59 AM

Testimony for WAM on 2/25/2020 12:40:00 PM

**LATE**

| Submitted By    | Organization | Testifier Position | Present at Hearing |
|-----------------|--------------|--------------------|--------------------|
| Jennifer McGurn | Individual   | Support            | No                 |

## Comments:

We need to do everything we possibly can to expand access to local foods, and make it easier for farmers (especially small farmers) to produce crops and get those crops to market. Food hubs make a huge difference for small farmers. We must change our priorities in this state - away from tourism, and towards a more sustainable future. We must take care of our residents first and provide other opportunities for them besides the visitor industry. If we can make it easier for farmers to access land, grow crops, and make a living do so, more people will go into that industry and we can cut our dependence on imported food products. It just makes sense. Please support this bill!!