

**SB 1324**

**DAVID Y. IGE**  
Governor

**JOSH GREEN**  
Lt. Governor



**JAMES J. NAKATANI**  
Executive Director

STATE OF HAWAII  
**AGRIBUSINESS DEVELOPMENT CORPORATION**

235 S. Beretania Street, Room 205  
Honolulu, HI 96813  
Phone: (808) 586-0186 Fax: (808) 586-0189

TESTIMONY OF JAMES J. NAKATANI  
EXECUTIVE DIRECTOR  
AGRIBUSINESS DEVELOPMENT CORPORATION

BEFORE THE COMMITTEE ON AGRICULTURE AND ENVIRONMENT  
MONDAY, February 4, 2019  
1:20 p.m.

SENATE BILL NO. 1324  
RELATING TO AGRIBUSINESS DEVELOPMENT CORPORATION

Chairperson Gabbard and Members of the Committee:

My name is James Nakatani, Executive Director of the Agribusiness Development Corporation ("ADC"). The ADC supports Senate Bill No. 1324, which authorizes the issuance of general obligation bonds and appropriates funds for capital improvement projects for the Christian Crossing Bridge.

The Christian Crossing Bridge is located in Kalepa, Kauai and is a critical part of the emergency route connecting Lihue with the North Shore. The area is prone to flooding and the bridge was covered by water several times in the past year, which caused erosion and structural damage. The capital improvement funds will repair and strengthen the bridge and supporting structure to mitigate any future flooding effects.

Thank you for the opportunity to testify, and for your consideration of this bill.

**SB-1324**

Submitted on: 2/3/2019 12:28:01 PM

Testimony for AEN on 2/4/2019 1:20:00 PM

<b>Submitted By</b>	<b>Organization</b>	<b>Testifier Position</b>	<b>Present at Hearing</b>
Arumugam Katir	Testifying for East Kauai Water Users Cooperative	Support	No

Comments:



**Kalepa Coalition**

5868 Kini Place  
Kapaa, Hawaii 96746  
Phone/Fax: 808-639-0152

LATE

TO: **Committee on Agriculture and Environment**  
Sen. Mike Gabbard, Chair  
Sen. Russell Ruderman, Vice Chair

**Testimony on SB1324, Relating to Christian Crossing Bridge**  
**Monday, February 4, Conference Room 224, 1:20 pm**

RE: Chairperson Gabbard and Members of the Committee:

We **strongly support SB1324**. The Kalepa Coalition is a Hawaii agricultural cooperative of the farmers and ranchers who hold long-term licenses on 6,500 acres of State land behind Kalepa Ridge on Kauai and under the administration of ADC.

The Christian Crossing Bridge, as it is known, is part of the Common Element Road of the Kalepa lands. It is reached from Maalo Road on the Lihue side. The bridge crosses the South Fork of the Wailua River a short distance above the Wailua Falls to connect the lower 2,000 acres of Kalepa with the upper 4,500. It is critical for utilization of these pasture and farm lands. Presently at very high water (over 14 feet above normal on the adjacent river gauge), the river overflows the bridge and makes it impassable. This situation, which happens several times a year, remains usually for just a few hours, but gives an idea of how much stress is being applied to the concrete structure. The bridge and its adjoining abutments suffer from erosion in these events, and it is possible the erosion will become severe enough to take out the structure.

Therefore, it is fully justified for ADC to conduct an engineering evaluation of the bridge and make repairs as required to ensure its continued use.

The only other way to enter these upper Kalepa lands is from the Kapaa side where the Common Element Road takes off from Kuamoo Highway at Wailua Reservoir and crosses the North Fork of the Wailua River by a ford which is frequently covered by water and much more often impassable (usually at the same time) than the South Fork bridge.

The Common Element Road including the Christian Crossing and the North Fork ford has been identified by FEMA as their only emergency bypass between Lihue and Kapaa should the Wailua River bridge of Kuhio Highway at the ocean suffer damage. It is therefore in the State's direct

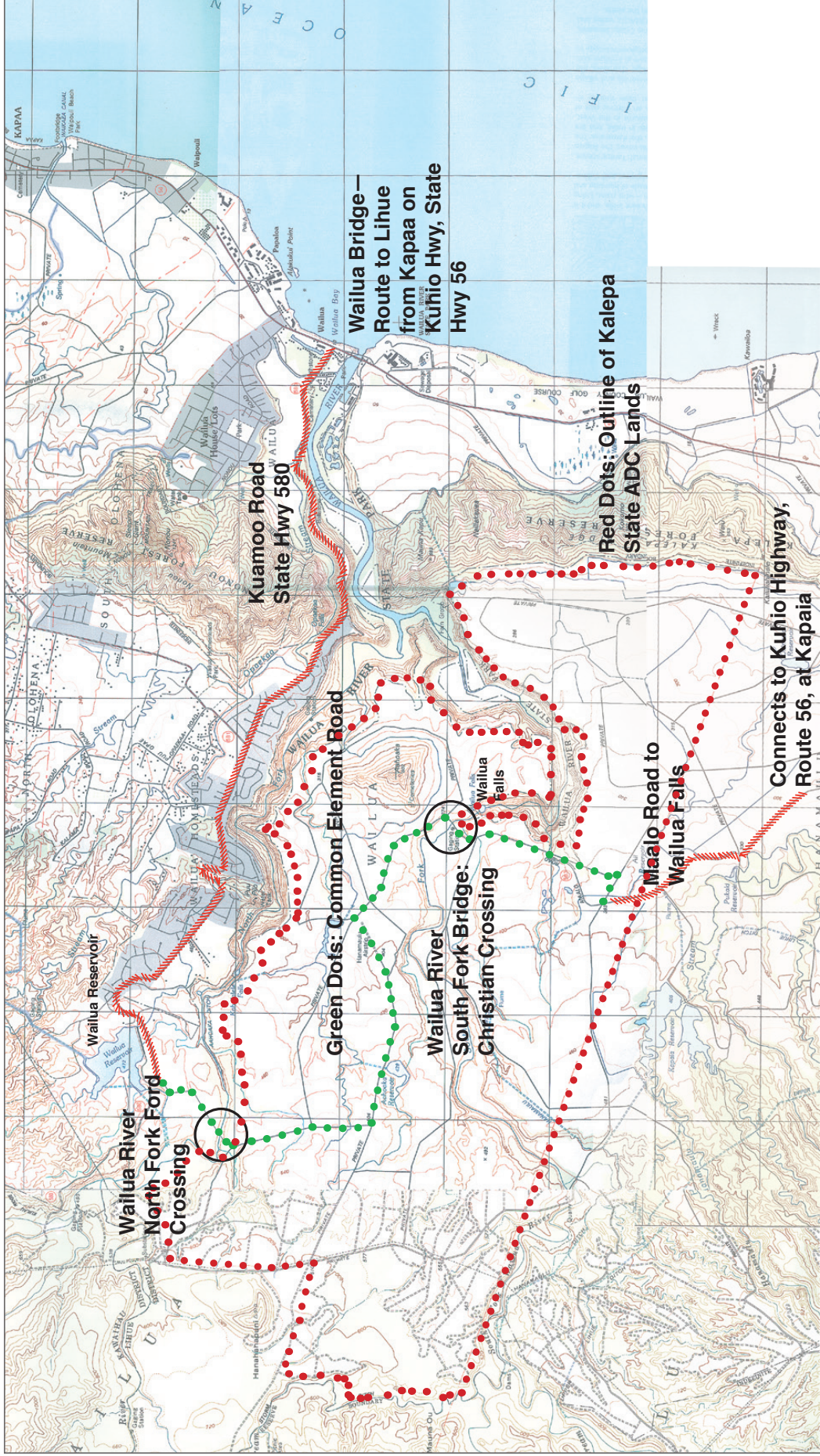
interest to see that the South Fork crossing is as durable as possible.

We would also recommend as part of this bill that the engineers be instructed to study the North Fork crossing and make recommendations for reinforcing its structure.

We respectfully request that this bill be passed.

A handwritten signature in black ink, appearing to read "L P Milnes". The signature is fluid and cursive, with the first letters of each word being capitalized and prominent.

Leslie P. Milnes, President  
Kalepa Coalition



Map of Kalepa ADC lands (outlined in red) showing the Fork's Christian Crossing bridge (center) and the North Common Element Road (green), Wailua River South Fork ford (upper left)