



EXECUTIVE CHAMBERS
HONOLULU

DAVID Y. IGE
GOVERNOR

Testimony of **Ford Fuchigami**
Administrative Director, Office of the Governor

Before the Joint Senate Committees of
Public Safety, Intergovernmental, and Military Affairs
and
Housing

February 8, 2019
2:45 p.m., Conference Room 225

In consideration of
Senate Bill No. 1302
RELATING TO NATURAL DISASTERS

Chairs Nishihara, Chang and committee members:

Thank you for the opportunity to provide testimony in support of SB 1302 Relating to Natural Disasters which appropriates funds to the County of Hawai'i for disaster relief.

We appreciate your attention and will be available to answer your questions, should you have any at this time.

STATE OF HAWAII
DEPARTMENT OF DEFENSE
HAWAII EMERGENCY MANAGEMENT AGENCY

TESTIMONY ON
SENATE BILL 1302, RELATING TO NATURAL DISASTERS

Before the Senate Committees on
**PUBLIC SAFETY, INTERGOVERNMENTAL, AND MILITARY AFFAIRS
AND
HOUSING**

by

THOMAS L. TRAVIS
Administrator, Hawaii Emergency Management Agency (HI-EMA)

Aloha Chairs and Vice-Chairs, and Members of the Committee:

The Hawaii Emergency Management Agency (HI-EMA) ***supports*** Senate Bill 1302.

Senate Bill 1302 Appropriates funds for disaster relief, recovery, mitigation, and remediation activities for the county of Hawai'i.

The unprecedented volcanic eruptions on the island of Hawaii from May 3, 2018 to August 14, 2018 destroyed hundreds of homes, communities, businesses, farms, schools, cultural sites, water systems, electrical grid, and roadways.

The Hawaii Emergency Management Agency deployed several personnel to assist the Hawaii County during the Kilauea eruption and continues to provide support to the long-term recovery and hazard mitigation efforts.

Note: My comments represent HI-EMA concerns at the state emergency management level only. I would defer to the separate comment/testimonies of the county emergency management agencies, as they would be the jurisdictions impacted by this legislation at the local level.

Thank you for the opportunity to provide testimony on Senate Bill 1302.

Thomas L. Travis: Thomas.L.Travis@hawaii.gov; 808-733-4300

DAVID Y. IGE
Governor

JOSH GREEN
Lt. Governor



PHYLLIS SHIMABUKURO-GEISER
Acting Chairperson
Board of Agriculture

State of Hawaii
DEPARTMENT OF AGRICULTURE
1428 South King Street
Honolulu, Hawaii 96814-2512
Phone: (808) 973-9600 FAX: (808) 973-9613

TESTIMONY OF THE DEPARTMENT OF AGRICULTURE
BEFORE THE SENATE COMMITTEES ON PUBLIC SAFETY,
INTERGOVERNMENTAL, & MILITARY AFFAIRS AND HOUSING

FEBRUARY 8, 2019
2:45 P.M.
CONFERENCE ROOM 225

SENATE BILL NO. 1302
RELATING TO NATURAL DISASTERS

Chairpersons Nishihara and Chang and Members of the Committees:

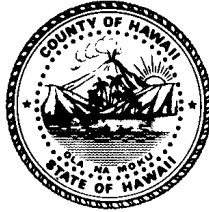
Thank you for the opportunity to testify on Senate Bill 1302. This bill provides an appropriation to the County of Hawaii to support the disaster relief efforts from the Kilauea eruption. The Department supports this bill and offers comments.

The agricultural industry suffered great losses due to the Kilauea eruption. With nearly \$28 million in losses to the agricultural industry in the County of Hawaii, the State must find ways to support agricultural recovery and revive production on Hawaii Island. The Department supports the efforts of the County of Hawaii in its agricultural recovery from the Kilauea eruption.

Thank you for the opportunity to testify on this measure.



County of Hawai'i
Council District 9 -
North and South Kohala



Phone: (808) 961-8564
(808) 887-2069

Email: tim.richards@hawaiiicounty.gov

Chair: Committee on Agriculture,
Water, Energy, and Environmental
Management

Vice Chair: Committee on Finance

HERBERT M. "TIM" RICHARDS, III
HAWAI'I COUNTY COUNCIL - DISTRICT 9
25 Aupuni Street, Ste. 1402, Hilo, Hawai'i 96720

February 7, 2019

Senate Committee on Public Safety, Intergovernmental, and Military Affairs

Honorable Senator Clarence Nishihara, Chair

Honorable Senator Glenn Wakai, Vice Chair

Senate Committee on Housing

Honorable Senator Stanley Chang, Chair

Honorable Senator Dru Mamo Kanuha, Vice Chair

Submission via online testimony

RE: **Support of SB 1302**

Hearing Date/Time: February 8, 2019 at 2:45 p.m.

Dear Senators:

My name is Herbert M "Tim" Richards III, a multi-generational, lifelong resident of the County of Hawai'i. I am also the sitting County Council Member from District 9 representing North and South Kohala. As the Chair of the Committee on Agriculture, Water, Energy, and Environmental Management for the Hawai'i County Council, I thank you for the opportunity to submit **testimony in SUPPORT of SB 1302**.

In 2018, the County of Hawai'i saw an unprecedented sequence of back to back natural disasters. In the greater volcano/Puna area daily earthquakes causing great and repeated damage to roads and buildings; subsequent lava flows destroying over 700 homes and at one point isolating or making unlivable another 300. Agricultural fields and pastures were covered in lava flows; some as thick as 50 feet. We saw flooding events brought on by Hurricane Lane, and at one point, the county was measuring rainfall in feet and not inches. On the west side, we had range fires with one burning in excess of 18,000 acres and putting Waikoloa Village at risk.

Any one of these events would push our counties resources and exhaust our personnel. Having the back to back to back events was all the more trying and wearing.

As damaging, if not more so, was the hit our island economy took. As the rest of the state enjoyed consistent growth in tourism, our county saw double digit contraction in visitors in the second half. The west side resorts in the months of May and June saw \$25 million cancellation of

Hawai'i County is an Equal Opportunity Provider and Employer

Senate Committee on Public Safety, Intergovernmental, and Military Affairs
Senate Committee on Housing

February 7, 2019

Page 2

room reservations. July through September saw another \$20 million worth of room cancellations. This does not take into account the lost revenue for car rental, restaurants, and activities. The airlines saw a reduction in demand for flights and some reduction in service has been seen. Add to this the reduction in agriculture production due to the lava and hurricane effects. All this reduction trickles down to the people; as the tourism contracted, hours of employment were reduced. Farmers cannot farm. Agriculture and tourism are the 2 defining economic drivers of the County of Hawai'i and although most of the physical damage was on the east side, the damage to the county economy was island wide.

In spite of the challenges, we came through. Now it is time to work on the rebuilding.

It is important that funds are appropriated for capital improvement projects of the Department of Agriculture.

Please feel free to contact me should you need to discuss my position and knowledge of this matter further.

Sincerely,

A handwritten signature in black ink, appearing to read "Herb M. Richards III". The signature is fluid and cursive, with a large, stylized flourish at the end.

HERBERT M. "TIM" RICHARDS, III
Hawai'i County Council, District 9

VALERIE T. POINDEXTER

*Council Member
Chair, Committee on Parks and Recreation
Council District 1*



Phone: (808) 961-8018
Fax (808) 961-8912
Email: valerie.poindexter@hawaiicounty.gov

HAWAI'I COUNTY COUNCIL

*County of Hawai'i
Hawai'i County Building
25 Aupuni Street, Suite 1402
Hilo, Hawai'i 96720*

February 6, 2019

Committee on Public Safety, Intergovernmental, and Military Affairs

Senator Clarence K. Nishihara, Chair

Email: sennishihara@capitol.hawaii.gov

Senator Glenn Wakai, Vice Chair

Email: senwakai@capitol.hawaii.gov

Committee on Housing

Senator Stanley Chang, Chair

Email: senchang@capitol.hawaii.gov

Senator Dru Mamo Kanuha, Vice Chair

Email: senkanuha@capitol.hawaii.gov

Subject: Testimony Supporting SB1302, Relating to Natural Disasters

Hearing: February 8, 2019, 2:45 p.m., Conference Room 225

Dear Chairs and Vice Chairs:

On behalf of myself and the constituents of Council District 1, Hāmākua, County of Hawai'i, I would like to express our support of SB1302, and submit a brief testimony as follows:

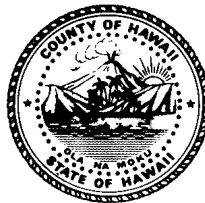
This bill appropriates funds for disaster relief, recovery, mitigation, and remediation activities for the county of Hawai'i.

I strongly support and urge the enactment of SB1302. Thank you for your time and consideration.

Sincerely,

Valerie T. Poindexter

Harry Kim
Mayor



Diane L. Ley
Director

Ron Whitmore
Deputy Director

County of Hawai'i

DEPARTMENT OF RESEARCH AND DEVELOPMENT

25 Aupuni Street, Room 1301 • Hilo, Hawai'i 96720-4252
(808) 961-8366 • Fax (808) 935-1205
E-mail: chresdev@hawaiicounty.gov

TESTIMONY OF DIANE LEY, KĪLAUEA RECOVERY MANAGER &
COUNTY OF HAWAII DEPARTMENT OF RESEARCH & DEVELOPMENT DIRECTOR

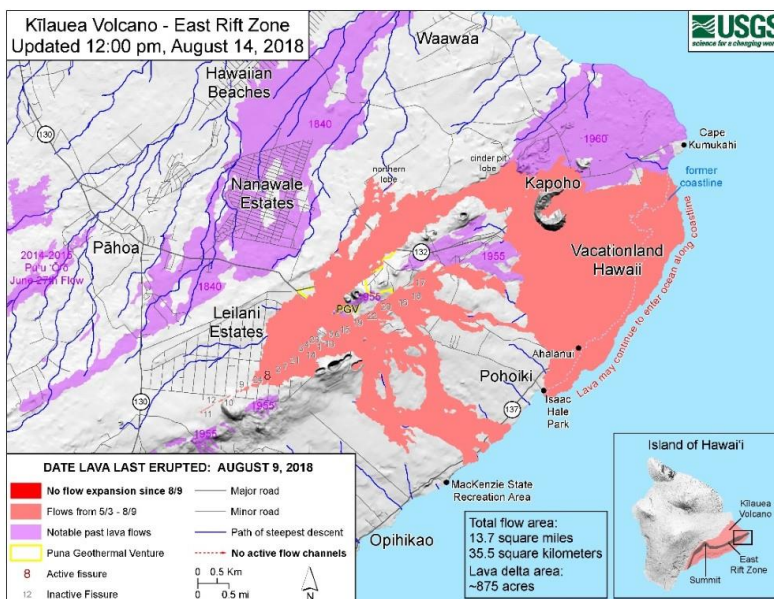
February 8, 2019

SB1302 RELATING TO NATURAL DISASTERS

Honorable Chairpersons Nishihara & Chang & Committee Members,

Thank you for the opportunity to provide supportive testimony for SB1302, relating to natural disasters. The passage of this bill will significantly assist families, businesses and communities in recovering from an estimated \$800 million in impacts from the recent eruption of Kīlauea by providing resources to assure housing assistance programs will be in place to support impacted households and federally required local match is available for critical infrastructure replacement. State personnel and leadership were present from start of the eruption providing the County of Hawai'i with significant support over the course of 100+ days, and the Governor provided financial support for both response and to kick-start the recovery process. **Now the County is requesting the Legislature's financial support in assuring families, businesses and communities can start the process to recover and rebuild in a safer, healthier and more resilient manner.**

The Kīlauea eruption began on May 3, 2018, in the lower East Rift Zone in the Puna district on the island of Hawai'i, 24 fissures opened and poured forth massive volumes of lava resulting in more than 6,000 acres of land covered with lava. More than 700 homes were lost, and more than 50 homes remain isolated, and some 1,600 acres of agricultural lands were covered or isolated.



In addition to lava flows and subsequent fires, hazards such as volcanic gas, vog, ash fall, acid rain, laze, ballistic projectiles, and earthquakes posed risks to people and property. Significant disruption of small businesses, farms and the visitor sector island-wide was experienced and continues to date, with tourism revenue alone estimated to have lost in excess of \$200 million.

The County initiated recovery steps while response was on-going; however, experts project that full recovery will take 5-10 years due to the significant disruption of lives and the economy, and the destruction of the environment. Recovery is complex and must address immediate needs while giving due consideration to future risks, community planning and the response capacity of families, businesses, communities and all levels of government. Thoughtful and comprehensive dialogue, planning and implementation are key to a full recovery that results in a healthier and more resilient communities.

Of immediate concern is November 2019 will mark the end of the Federal Emergency Management Agency's (FEMA) Individual Assistance program and the associated federal rental and lease subsidies for displaced families; thus, it will be critical for a local safety net to be in place. The County is taking steps to ready a range of housing assistance programs – from continued rental assistance via additional Section 8 Vouchers and/or the re-establishment of a rental rehabilitation program; to expedited home and wastewater permitting and a proposed down-payment revolving loan fund; to exploratory efforts to stand up a community land trust and financial literacy program that would expand the capacity of families to secure affordable replacement homes. **The County is asking the Legislature to provide appropriate housing assistance resources to provide continued assistance to the impacted families; thus, empowering their individual successful recoveries and avoid becoming homeless or facing other social challenges.**

The loss of critical infrastructure including primary roads, domestic waterlines and park facilities is estimated to be valued at approximately \$236.5 million. Access roads and water are critical to the successful recovery of communities; however, all must learn from the past and plan for a more resilient future; hence, the County recognizes the need to provide critical information for decision-makers – families, businesses and government – to make informed long-term decisions. The County continues to gather information as to a broad range of federal funding sources and has partnered to prepare a risk assessment, hazard mitigation studies and a financial analysis so that decision-makers will be equipped to assess what public assets and services should be returned to the impacted area or redirected to other areas. Fortunately, FEMA can provide a 75% cost share for replacement of roads, waterlines and public facilities. **The County is asking the Legislature to provide appropriate resources to meet the required 25% local match to replace roads and other public infrastructure.**

The County has been proactive working with partners in planning and implementing short-term, intermediate and long-term recovery efforts. To date FEMA has provided over \$10 million in Individual Assistance directly to impacted households, and the County has secured over \$2.1 million in a mix of federal and private grants to support housing case management, financial literacy and economic recovery planning. Potential future funding includes federal Community Development Block Grant - Disaster Relief and a wide range of disaster assistance programs pending before Congress. At the State level, the Governor, the University of Hawai'i at Manoa and the Hawaii Visitors and Convention Bureau have been responsive in providing resources to assure recovery is moving forward. All of which will go toward recovering from the estimated \$800 million in impacts as a result of the eruption.

The Legislature's favorable consideration of SB1302 is necessary to support long-term recovery efforts for our families, businesses, and communities and would be sincerely appreciated.

KAPOHO LAND PARTNERSHIP
(A Hawaii limited partnership)
Kapoho Management Company, Inc.
(General Partner)
Kapoho Land & Development Co. Ltd.
(808) 282-0448 (808) 935-5810
P. O. Box 374
Hilo, Hawaii 96721-0374

February 6, 2019

Subject: Senate Bill 1302 Relating to Natural Disasters and Housing

Aloha: Senator Clarence K. Nishihara, Chair and Senator Glenn Wakai, Vice Chair, and Committee Members of the Senate Committee of Public Safety and Intergovernmental and Military Affairs.
Senator Stanley Chang, Chair and Senator Dru Mamo Kanuha, Vice Chair; and Committee on Housing Members.

I am testifying in support of Senate Bill 1302 Relating to Natural Disasters and Housing. Specific interests that I have are the reopening of Highway 132, and State aid (preferably grants) to ranchers and farmers directly impacted by the Kilauea disaster.

I have attached a map showing the Kapoho companies' lands and the area impacted by the 2018 eruption in Kilauea East Rift Zone. We recognize that many others lost more or everything. My family is the largest landowner impacted by the 2018 KERZ eruption. Based on the County of Hawaii's geographic information system, we had 1,265 acres covered by lava, including two of the fissures on our lands. Our direct losses are estimated to be in the low-eight figures, over \$10,000,000.00. Our papaya farmers lost or do not currently have access to an estimated 650 acres of papaya fields, and our rancher has had to relocate to other pasturage. Our farmers and ranchers are families, they want to return to lands we own, and they need disaster funds preferably as grants.




Reopening highway 132 would allow neighbors and agricultural tenants to access lands that are presently encircled by lava from the 2018 Kilauea Lower East Rift Zone KLERZ eruption. Now that we are in a recovery phase, we are in discussions with our rancher and farmers to return and are working with our farmers so they can get access, via Highway 132, to papaya and noni fields that are currently "lava-locked." We have explored the alternative of going through private lands and have concluded that the most straightforward solution is to have highway 132 reopened along the existing alignment.

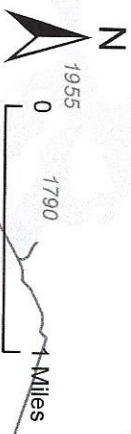
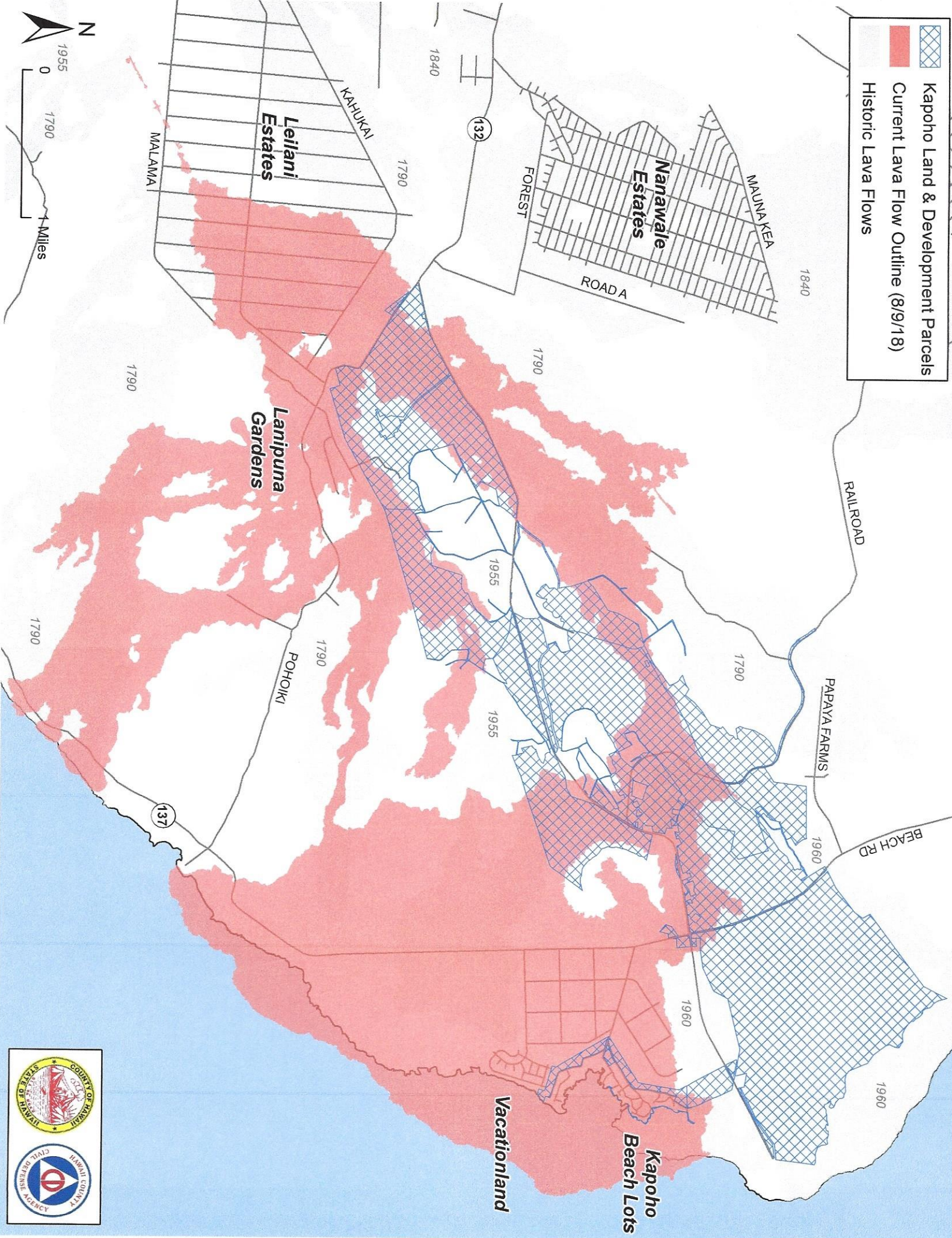
During the eruption, and in the vicinity of the flow, we had papaya farmers who asked to expand their acreage, and we allowed them to do so without seeking any compensation from them. During the eruption, our rancher immediately moved their cattle to pasturage in Kau, however due to ash fallout from Kilauea Crater they were forced to move again.

Mahalo a nui loa,



A. Lono Lyman, Manager KLP and KLDC President KMC

 Kapoho Land & Development Parcels
 Current Lava Flow Outline (8/9/18)
 Historic Lava Flows





200 North Vineyard Boulevard, B140
Honolulu, HI 96817
Ph: 808-587-7886
Toll Free: 1-866-400-1116
www.hawaiiancommunity.net

February 5, 2019

Senate Committees on Public Safety, Intergovernmental, and Military Affairs and Housing
Friday, February 8, 2019
Conference Room 229

SB1302 - SUPPORT

Aloha Committee Chair, Vice-Chair, and Members:

I am submitting testimony in my capacity as Executive Director of Hawaiian Community Assets (HCA), a nonprofit community development corporation, Hawaii Island's only HUD-approved housing counseling agency, and community development financial institution, to **STONGLY SUPPORT SB1302.**

SB1302 appropriates funds to the Office of the Governor, the Department of Agriculture, and the Department of Health for disaster relief and recovery for the County of Hawaii.

Our organization has been on-the-ground partnering with Federal, State, County, and private sector partners to provide relief and recovery efforts on Hawaii Island following the Kilauea eruptions. While amazing work has been done to address the needs of Hawaii Island residents impacted by the eruptions, we have a long road ahead of us to recover from the disaster that devastated entire communities.

HCA has been using grant funds from Rural Local Initiative Support Corporation to provide housing counseling to assist low- and moderate-income households obtain rental housing or rebuild homes after losing everything they had. In addition, we secured funding from Hawaii Community Foundation to offer emergency loans so the families have the capital needed to rebuild their lives, cover first month's rent/deposit, or address other housing recovery needs they are facing.

The State's appropriation of funds for disaster relief and recovery would allow us to continue this work and access additional public and private capital to further expand our reach.

Mahalo for your time, leadership and consideration. Please contact me directly at 808.587.7653 or jeff@hawaiiancommunity.net should you have any questions or need additional information.

Sincerely

A handwritten signature in black ink that reads "Jeff Gilbreath".

Jeff Gilbreath
Executive Director

SB-1302

Submitted on: 2/6/2019 10:49:47 AM

Testimony for PSM on 2/8/2019 2:45:00 PM

Submitted By	Organization	Testifier Position	Present at Hearing
Stephanie Donoho	Testifying for Kohala Coast Resort Association	Support	No

Comments:



Hawaii
Habitat
for Humanity®
Association

February 5, 2019

Senate Committees on Public Safety, Intergovernmental, and Military Affairs and
Housing
Friday, February 8, 2019 at 2:45 p.m.
Senate Conference Room 225

SB1302 – SUPPORT

Dear Committee Chairs, Vice-Chairs and Members:

I am submitting testimony in my capacity as Executive Director of Hawaii Habitat for Humanity Association, a Habitat for Humanity State Support Organization, supporting five Habitat affiliates across the state of Hawaii to **STRONGLY SUPPORT SB1302**.

As a member of the State Voluntary Organizations Active in Disasters (HIVOAD), we have been involved in long-term disaster recovery efforts in partnership with our affiliate Habitat for Humanity Hawaii Island (HFHHI). Our work has been in support of the boots on the ground work that HFHHI has already started. This long-term recovery effort includes advocating and securing funding and land resources for the families who have been displaced by the Kilauea volcanic lava flow, forcing families to not only leave their homes, but to completely destroy their homes and the property it was built on. We look forward to working with the State of Hawaii and the County of Hawaii Island to relocate and build new homes for these families.

We know this is a long-term effort and are prepared to support the State and County in their efforts to not only relocate the lava flow victims, but also provide housing, specifically homeownership opportunities for Hawaii Island's low income families.

The State's appropriation of funds for disaster relief and recovery would allow us to continue our work in supporting the rebuilding efforts of Habitat for Humanity Hawaii Island. Our organization can provide additional funding through our current Community Development Financial Institution loan fund to help match and offset the funding provided by the State, through this appropriation.

Mahalo for your time, leadership and consideration. Please contact me directly at 808-847-7676 or jean@hawaiihabitat.org should you have any questions or need additional information.

Sincerely,

Jean Lilley
Executive Director

2051 Young St.#82
Honolulu, HI 96826
808-847-7676

www.hawaiihabitat.org

Testimony in Support of SB 1302

Hearing: SB 1302 in support

Date: February 8, 2019

Location: State Capitol – Rm. 225

To: Committee Chair, Vice-Chair, and Committee Members:

Aloha Committee Chair, Vice-Chair, and Committee Members:

I am writing you to ask that you pass SB1302. Puna needs help recovery from the Volcano eruption. We had an affordable housing crisis in our state before the disaster and we need to address these housing issues now.

Please pass SB 1302.

Mahalo,

Stephen C. Machesky, Habitat for Humanity Hawaii Island BOD member

SB-1302

Submitted on: 2/7/2019 1:17:42 PM

Testimony for PSM on 2/8/2019 2:45:00 PM

Submitted By	Organization	Testifier Position	Present at Hearing
Richard A. Tardiff	Individual	Support	No

Comments:

The effects of the 2018 Kilauea eruptions will be felt by the residents of the Big Island for decades to come. As is so often the case, those most hurt will be those least able to cope with their losses. I urge the Senate to pass SB1302 as part of the greater effort to restore the lives of our brothers and sisters in the Puna area.

SB-1302

Submitted on: 2/5/2019 8:30:23 PM

Testimony for PSM on 2/8/2019 2:45:00 PM

Submitted By	Organization	Testifier Position	Present at Hearing
Brian Murphy	Individual	Support	No

Comments:



Habitat
for Humanity®
Hawai'i Island

*Building houses,
building hope*

Deacon Michael Ross
Board President

Dr. AnnMarie Muramoto
Vice President

Anthony Cann
Secretary

Hobbs Lowson
Treasurer

Edwina Fujimoto

Father Richard Tardiff

Gail Noeau

Julie Ziemelis

Leiola Augustine

Melanie Lucas

Napua Kekauoha-Chartrand

Ron Lloyd

Steve Machesky

Patrick F. Hurney
Executive Director

Habitat for Humanity
Hawai'i Island, Inc.
PO Box 4619
Kailua-Kona, HI 96745

Phone (808) 331-8010
Fax (808) 331-8020
info@habitat-hawaiiisland.org
www.habitathawaiiisland.org



Community Partner

February 6, 2019

Senate Committee on Public Safety, Intergovernmental and Military Affairs and
Housing

Friday, February 8, 2019
Conference Room 225

SB1302 – SUPPORT

Aloha Committee Chair, Vice-Chair, and Committee Members:

I am submitting testimony on behalf of Habitat for Humanity Hawaii Island (HFHHI), a nonprofit affordable housing provider, and one of a few affordable housing organizations on the Big Island, to **STRONGLY SUPPORT SB1302**. Appropriates funds for disaster relief, recovery, mitigation, and remediation activities for the county of Hawai'i.

Our organization has been on-the-ground collaborating with Federal, State, County, and private sector partners to provide relief and recovery efforts on Hawaii Island following the Kilauea eruptions. While amazing work has been done to address the needs of Hawaii Island residents impacted by the eruptions, we have a long road ahead of us to recover from the disaster that devastated entire communities.

Mahalo for your time, leadership and consideration. Please contact me directly at 808.937.7443 or pat@habitat-hawaiiisland.org should you have any questions or need additional information.

Sincerely

Patrick F. Hurney
Executive Director

SB-1302

Submitted on: 2/7/2019 2:37:55 PM

Testimony for PSM on 2/8/2019 2:45:00 PM

Submitted By	Organization	Testifier Position	Present at Hearing
Shirley David	Individual	Support	Yes

Comments:

Aloha Committee Chair, Committee Vice-Chair, and Committee Members,

Although I am testifying as an individual citizen of Hawaii County, I am very much involved and aware of the impacts of the 2018 volcano eruption and floods on Hawaii Island. I am vice-chair of the Kona Community Development Plan Action Committee, and a member of the Community Alliance Partners Continuum of Care.

The whole island of Hawaii and the state are impacted by these natural disasters. Produce and flower farms were destroyed as well as homes and livelihoods. Affordable housing was already at a premium before these events. We need much financial help to make us whole.

Please support Hawaii Island by supporting SB1302 with a yes vote.

Shirley David, Kailua-Kona

**TESTIMONY BEFORE SENATE COMMITTEES ON
PUBLIC SAFETY, INTERGOVERNMENTAL & MILITARY AFFAIRS
AND
SENATE COMMITTEE ON HOUSING**

S.B. 1302

Relating to Natural Disasters

Friday, February 8, 2019
2:45 p.m., Agenda Item #2
State Capitol, Conference Room 225

Sharon Suzuki
President, Maui County and Hawai'i Island Utilities
Hawai'i Electric Light Company & Maui Electric Company

Aloha Chair Nishihara, Chair Chang, Vice Chair Wakai, Vice Chair Kanuha and Members of the Committees,

My name is Sharon Suzuki and I am testifying on behalf of Hawaiian Electric Company Inc. and its subsidiary utilities Maui Electric Company, Limited and Hawai'i Electric Light Company, Inc. ("the Hawaiian Electric Companies") in support of S. B. 1302, Relating to the Natural Disasters.

S.B. 1302 provides for funds to meet the needs for relief, recovery, mitigation, and remediation assistance from disaster damage, losses, and suffering caused by the extensive damage of the Kilauea eruption in the County of Hawaii including:

- \$30,000,000 in loans, not to be used to match other state funding,
- \$20,000,000 in funds to cover housing assistance.

The Kilauea eruption permanently altered large portions of the landscape, communities, and the economy, with losses tallying in the hundreds of millions for Hawai'i island. The eruption caused permanent displacement that involves complex recovery planning and implementation. Over eight thousand acres were inundated by



lava, covering neighborhoods, farms, a school, cultural sites, recreational destinations, roadways, water systems, and large portions of the electrical grid. Over three thousand parcels were destroyed or made inaccessible, which resulted in \$4,000,000 in annual county real property tax revenue losses.

Economic losses included the unprecedented closure of Hawai'i Volcanoes National Park, the County's largest tourist attraction and economic engine, and an estimated \$27,900,000 in agriculture losses. Puna Geothermal Ventures, a thirty-eight megawatt geothermal plant was shut down and isolated, resulting in a loss of approximately one-third of the Island's power production, and about half of its renewable energy portfolio.

The scale of the recovery exceeds the County of Hawai'i's capacity. The County's \$500,000,000 annual operation budget has been stretched to its limit. Even with federal disaster assistance, the county will need this additional assistance to provide the local match to federal funding and to address recovery needs beyond what federal programs cover.

Accordingly, the Hawaiian Electric Companies support S.B. 1302 to assist the County in its response, relief, recovery and mitigation efforts. Thank you for this opportunity to testify.

SB-1302

Submitted on: 2/7/2019 12:42:42 PM

Testimony for PSM on 2/8/2019 2:45:00 PM

Submitted By	Organization	Testifier Position	Present at Hearing
Toni Symons- HAPI	Individual	Support	No

Comments:

SB-1302

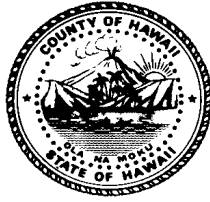
Submitted on: 2/5/2019 11:58:04 AM

Testimony for PSM on 2/8/2019 2:45:00 PM

Submitted By	Organization	Testifier Position	Present at Hearing
Victor K. Ramos	Individual	Support	No

Comments:

Council Member
District 5 – Puna



Phone No.: (808) 961-8263
matt.kanealii-kleinfelder@hawaiicounty.gov

MATT KANEALI`I-KLEINFELDER

County of Hawai`i

25 Aupuni Street, Suite 2405 • Hilo, Hawai`i 96720

February 7, 2019

Senator Clarence Nishihara, Chair
Committee on Public Safety, Intergovernmental, and Military Affairs
Hawai`i State Legislature

RE: SB 1302 RELATING TO NATURAL DISASTERS

Dear Chair Nishihara and Committee Members:

Thank you for the opportunity to testify in **support of SB 1302**. Many of my fellow Puna residents are anxiously awaiting relief and remediation from the Kīlauea eruption by any means available to them including assistance with housing, loans, etc.

Sincerely,

A handwritten signature in black ink, appearing to read 'Matt Kaneali'i-Kleinfelder'. The signature is fluid and cursive, with a long horizontal stroke extending to the left and a large loop at the end.

Matt Kaneali`i-Kleinfelder
Council Member
District 5

SB-1302

Submitted on: 2/5/2019 5:59:09 PM

Testimony for PSM on 2/8/2019 2:45:00 PM

Submitted By	Organization	Testifier Position	Present at Hearing
Shannon Burrows	Individual	Support	No

Comments:

Aloha Honorable Senators,I am Smiley Burrows of Kapoho Crater in the LERZ,I am in support of eruption recovery efforts,especially in road recovery efforts of rt132,rt137 and Pohoiki Rd.The road to recovery starts with a road.Our residents and farmers need access home,mahalo nui

LATE

SB-1302

Submitted on: 2/7/2019 5:56:50 PM

Testimony for PSM on 2/8/2019 2:45:00 PM

Submitted By	Organization	Testifier Position	Present at Hearing
M. Eileen O'Hara	Individual	Support	No

Comments:

Please support this measure to provide assistance for recovery subsequent to the 2018 volcanic eruption that destroyed over 700 houses, took out major rural highways, and stranded many properites and useable acres of farmland. We need your help!

LATE

SB-1302

Submitted on: 2/8/2019 12:51:42 AM

Testimony for PSM on 2/8/2019 2:45:00 PM

Submitted By	Organization	Testifier Position	Present at Hearing
Melodie Aduja	Testifying for O`ahu County Committee on Legislative Priorities of the Democratic Party of Hawai`i	Support	No

Comments:



Inspiring Hope, Changing Lives

Visit us on the web: www.hopeserviceshawaii.org

Connect via email: info@hopeserviceshawaii.org

HOPE Help Line: 808-935-3050

Hearing: SB 1302 in support
Date: February 8, 2019
Location: State Capitol – Rm. 225
To: Committee Chair, Vice-Chair, and Committee Members:

LATE

Aloha Committee Chair, Vice-Chair, and Committee Members:

I am submitting testimony on behalf of HOPE Services Hawai'i, a nonprofit homelessness service provider, in support of SB 1302, which would provide desperately needed funds to help Hawai'i County recover from the Kilauea eruption.

The resilient people of Puna have continued to lift each other up and help their neighbors in the relief effort for almost a year, despite unimaginable strain. One such resident is Hershel Hood of Lanipuna Gardens, who was given only ten minutes to evacuate. He was not able to bring his important documents, his computer, or even shoes. He never saw his dogs again. After his home and everything he owned was buried under lava, Hershel didn't know what to do, but he knew there were others in need. He began volunteering as a chef at World Central Kitchen, cooking meals for his fellow evacuees five days a week, while trying to pick up the pieces of his own life.

Many others who were displaced also contributed to the relief effort, and are to be commended. However, the reality is that Hawai'i County is the poorest in the state--and would be a travesty to continue to put the onus of the recovery on them. It is time for the state to show the same aloha to the people of Puna that they have shown to each other.

For these reasons, I strongly urge you pass SB 1302.

Mahalo for your consideration.

Sincerely,
Brandee Menino

Chief Executive Officer
HOPE Services Hawaii, Inc.

JOIN OUR COMMUNITY



HOPE SERVICES HAWAII, INC.
ADMINISTRATIVE
OFFICE
357 Waiuanue Avenue
Hilo, HI 96720
phone: (808) 935-3050
fax: (808) 935-3794

HALE MALUHIA
EMERGENCY SHELTER
110 Ululani Street
Hilo, HI 96720
phone: (808) 443-4717
fax: (808) 934-7456

KIHEI PUA
EMERGENCY SHELTER
115 Kapi'olani Street
Hilo, HI 96720
phone: (808) 933-6053
fax: (808) 934-0904

VETERAN HOUSING
PROGRAMS
21 West Ohea Street
Hilo, HI 96720
phone: (808) 934-8658
fax: (808) 934-8658

FRIENDLY PLACE
RESOURCE CENTER
74-5593 Pawai Place
Kailua-Kona, HI 96740
phone: (808) 933-6062
fax: (808) 329-6219

WEST HAWAII EMERGENCY
HOUSING PROGRAM
74-5593 Pawai Place
Kailua-Kona, HI 96740
phone: (808) 217-5560
fax: (808) 327-2171

BOARD OF DIRECTORS
President
Anne Harpham

Interim Vice-President/
Treasurer
Charlene Iboshi

Secretary
Rev. Robert Stark, SSS

Directors
Carol R. Ignacio
Gwen DeCoito
Patrick Hurney
Dean Au

EXECUTIVE LEADERSHIP
Chief Executive Officer
Brandee Menino