

OFFICE OF PLANNING STATE OF HAWAII

235 South Beretania Street, 6th Floor, Honolulu, Hawaii 96813
Mailing Address: P.O. Box 2359, Honolulu, Hawaii 96804

Telephone: (808) 587-2846
Fax: (808) 587-2824
Web: <http://planning.hawaii.gov/>

DAVID Y. IGE
GOVERNOR

MARY ALICE EVANS
DIRECTOR
OFFICE OF PLANNING

Statement of
MARY ALICE EVANS
Director, Office of Planning
before the
HOUSE COMMITTEE ON FINANCE
Thursday, February 20, 2020
11:00 AM
State Capitol, Conference Room 308

in consideration of
HB 1892 HD 1
RELATING TO A FOOD HUB PILOT PROGRAM.

Chair Luke, Vice Chair Cullen, and Members of the House Committee on Finance:

The Office of Planning **supports** the intent of this measure. The purpose of HB 1892 HD 1 is to require the Department of Agriculture to establish a five-year food hub pilot program to increase access to local food. HB 1892 HD 1 provides for the award of grant funding by qualified applicants wishing to establish or expand a food hub.

The Office of Planning has been actively working on sustainable development and climate adaptation to meet the needs of the present without compromising the ability of future generations to meet their own needs.

The Office of Planning notes that one of the six Hawai'i Aloha+ Challenge goals is the local food goal was informed by stakeholder and community input to the Hawai'i 2050 Sustainability Plan (published in 2008), which identified doubling local food production by 2030. The Governor's Sustainable Hawai'i Initiative increases this ambition with a target to double local food by 2020. Furthermore, Act 151 was passed as Session Law of Hawai'i 2019, to require the Department of Agriculture, in cooperation with the Office of the Governor, to develop a strategic plan to achieve the governor's goal of doubling food production and increasing food exports by 2030.

The Office of Planning agrees that that food hubs described in HB 1892 HD 1 may become a more important link in the supply chain to channel more local food to the consumers and institutions of the State. Food hubs, as centrally located facilities with a business management structure that facilitates the aggregation, storage, processing, distribution and marketing of locally grown produce, are an integral but missing piece of agricultural infrastructure required to achieve and sustain the doubling of local food production in Hawai'i. The Office of Planning looks forward to supporting the Department of Agriculture in these sustainable endeavors to increase Hawaii's food security.

Mahalo for the opportunity to submit testimony in support of HB 1892 HD 1.



HAWAII APPLESEED
CENTER FOR LAW & ECONOMIC JUSTICE

Testimony of Hawai'i Appleseed Center for Law and Economic Justice
In Support of HB 1892 HD 1 -- Relating to a Food Hub Pilot Program
House Committee on Finance
Thursday, February 20, 2020, 11:00 AM, in conference room 308

Dear Chair Luke, Vice Chair Cullen, and members of the Committee:

Thank you for the opportunity to testify in **SUPPORT** of **HB 1892, HD 1**, which creates a food hub program in the Department of Agriculture.

The U.S. Department of Agriculture defines food hubs as facilities that “facilitate the aggregation, storage, processing, distribution, and/or marketing of locally produced food products.” These facilities are a critical yet undervalued piece of the local food system infrastructure.

Hawai'i Appleseed believes it is important that low-income residents have access to the same standards of food quality and nutrition as wealthier residents. Unfortunately, the lack of infrastructure for local food production makes lower income markets more difficult for Hawai'i farmers to reach. This creates an inequitable system, where only affluent households have access to fresh, local ingredients, and lower income households must rely on nutrient-poor processed foods, exacerbating the health disparities between higher and lower income individuals.

Food hubs are an economic development tool for rural communities. A recent survey of Hawai'i food hubs, conducted by the Hawai'i Farmers Union United, found that most existing food hubs in the state serve low-income populations, including direct sales to families who rely on SNAP-EBT, and aggregation of food for schools with a high proportion of students who are eligible for free and reduced-price meals. Over the past five years, they have brought in nearly \$6 million in outside investments, most of which has been channeled into local infrastructure, and have created over 60 jobs.

Local food production is an important goal, but we often place all the emphasis on the “production” end of the supply chain, while ignoring all of the other steps needed to get those products to local markets. Farmers need market infrastructure if they are to reach local families, and food hubs are a critical piece of that infrastructure.

We appreciate your consideration of this testimony, and urge you to pass HB 1892.

Hawai'i Appleseed is committed to a more socially just Hawai'i, where everyone has genuine opportunities to achieve economic security and fulfill their potential. We change systems that perpetuate inequality and injustice through policy development, advocacy, and coalition building.



MAUI

CHAMBER OF COMMERCE
VOICE OF BUSINESS

**HEARING BEFORE THE HOUSE COMMITTEE ON FINANCE
HAWAII STATE CAPITOL, HOUSE CONFERENCE ROOM 308
THURSDAY, FEBRUARY 20, 2020 AT 11:00 A.M.**

To The Honorable Sylvia Luke, Chair;
The Honorable Ty J.K. Cullen, Vice Chair; and
Members of the Committee on Finance,

**TESTIMONY IN SUPPORT OF HB1892 RELATING TO
A FOOD HUB PILOT PROGRAM**

Aloha, my name is Pamela Tumpap and I am the President of the Maui Chamber of Commerce, with approximately 650 members. I am writing share our support of HB1892.

The farming community is changing and in the past, we had stronger co-ops who assisted with marketing, production and distribution. We appreciate and support this bill to create a food hub pilot program and that the requirements include food hubs for all counties. Food hubs would help local farmers and ranchers, food manufacturers and the community.

However, the \$1,000,000 appropriation for the whole state equates to \$250,000 per county. We feel it will be difficult to build the type of facility described in the bill for this amount. This is also dependent upon what types of local foods are being processed in this facility as meat, fruits and leafy greens are all handled differently.

Further, since this is a 5-year pilot program, we believe it would be valuable to include a deadline to have a facility up and running earlier in the pilot. For example, if it takes 4 years to build a facility, that would only give 1 year to assess the operation and effectiveness of the program.

We appreciate the opportunity to testify on this matter and ask that this bill be passed.

Sincerely,

Pamela Tumpap
President

To advance and promote a healthy economic environment for business, advocating for a responsive government and quality education, while preserving Maui's unique community characteristics.

HB-1892-HD-1

Submitted on: 2/19/2020 11:53:28 AM

Testimony for FIN on 2/20/2020 11:00:00 AM

Submitted By	Organization	Testifier Position	Present at Hearing
Ming Wei Koh	Center for Getting Things Started 501 c3	Support	No

Comments:

Center for Getting Things Started is working on regenerative agriculture and food security initiatives. Food hubs are critical to expanding farm to school/farm to state by allowing small farmers (95% of Hawaii's farms) to aggregate, store, wash/process, pack, market, and distribute produce and other foods and to bid on larger contracts offered by state institutions (schools, hospitals, prisons). Food hubs support existing and new farmers by relieving/sharing the burden of these significant challenges.

We whole-heartedly support this bill as it will expand current efforts and increase government investment in farm to school/farm to state and the regeneration of Hawaii's community food systems toward achieving food security and self sufficiency in Hawai'i.



Email: communications@ulupono.com

HOUSE COMMITTEE ON FINANCE
Thursday, February 20, 2020 — 11:00 a.m. — Room 308

Ulupono Initiative supports HB 1892 HD 1, Relating to a Food Hub Pilot Program.

Dear Chair Luke and Members of the Committee:

My name is Amy Hennessey, and I am the Senior Vice President of Communications & External Affairs at Ulupono Initiative. We are a Hawai'i-based impact investment firm that strives to improve our community's quality of life by creating more locally produced food; increasing affordable clean renewable energy and transportation options; and better managing waste and fresh water resources.

Ulupono supports HB 1892 HD 1, which requires the Department of Agriculture to establish a 5-year food hub pilot program to increase access to local food.

Ulupono supports the efforts of food hubs statewide as they serve as critical aggregation, food processing, and distribution for small farmers to access local markets. By increasing local market accessibility, small farmers will be able to provide a fresh, healthy product for consumers statewide. According to the 2017 USDA NASS Census of Agriculture, of Hawai'i's 7,328 farms statewide, 66%, or 4,868 farms, are between 1–9 acres and 78%, or 5,701 farms, produce less than \$25,000 in sales. Hawai'i's agricultural producer majority is small farmers. State supported food hubs allow Hawai'i's producers the opportunity to compete with local markets while also remaining financially viable.

Thank you for this opportunity to testify.

Respectfully,

Amy Hennessey, APR
Senior Vice President, Communications & External Affairs

Investing in a Sustainable Hawai'i



P.O. Box 253, Kunia, Hawai'i 96759
Phone: (808) 848-2074; Fax: (808) 848-1921
e-mail info@hfbf.org; www.hfbf.org

February 20, 2020

HEARING BEFORE THE
HOUSE COMMITTEE ON FINANCE

TESTIMONY ON HB 1892, HD1
RELATING TO A FOOD HUB PILOT PROGRAM

Room 308
11:00 AM

Aloha Chair Luke, Vice Chair Cullen, and Members of the Committee:

I am Brian Miyamoto, Executive Director of the Hawaii Farm Bureau (HFB). Organized since 1948, the HFB is comprised of 1,800 farm family members statewide and serves as Hawaii's voice of agriculture to protect, advocate and advance the social, economic and educational interests of our diverse agricultural community.

The Hawaii Farm Bureau supports HB 1892, HD1, which requires the Department of Agriculture to establish a five-year food hub pilot program to increase access to local food and provides for the award of grant funding by qualified applicants wishing to establish or expand a food hub.

Small farmers typically do not have access facilities and infrastructure to aggregate, process, and distribute products to local consumers. The challenge to small growers is also complicated by stringent regulations of the Food Safety Modernization Act (FSMA), jeopardizing the ongoing viability of many small growers due to the costs of compliance.

In Hawaii, additional challenges to small farmers include high costs in land, labor, and energy, as well as limited access to water supply for irrigation. Food hubs are an important subset of food value chains. Many farmers and ranchers, especially small sized operations, often lack the capacity to access retail, institutional, and commercial foodservice markets on their own, and consequently miss out on the fastest growing segment of the local food market. By offering a combination of aggregation, distribution, and marketing services at an affordable price, food hubs make it possible for many producers to gain entry into new larger-volume markets that boost their income and provide them with opportunities for scaling up production.

Thank you for this opportunity to testify on this important subject.

Vincent Mina
President HFUU-HFUF

Anny Bruch
Vice President &
Kaua'i Chapter Pres.

David Case
Secretary

Annie Alvarado
Treasurer

~~~~~>~~~~~



TESTIMONY IN STRONG SUPPORT OF HB1892 HD1  
before the House Committee on Finance, Chair Sylvia Luke,  
on Thursday, 02-20-20 11:00AM in House conference room 308.

**Christian Zuckerman**  
Wai'anae, O'ahu

Aloha Chair Luke and Members of the House Committee on Finance,

**Vincent Kimura**  
Waimanalo, O'ahu

**Brynn Foster**  
North Shore, O'ahu

**Kaipo Kekona**  
Lahaina, Maui

**Bobby Pahia**  
Kahalawai, Maui

**John Dobovan**  
Haleakala, Maui

**Matthew Van Paepeghem**  
Hana, Maui

**Dash Kuhr**  
Kohala, Hawai'i

**Maureen Datta**  
Kona, Hawai'i

**Steve Lund**  
Puna, Hawai'i

**Drake Weinert**  
East Hawai'i

**Matt Drayer**  
Ka'u, Hawai'i

HFUU is a 501(c)(5) agricultural advocacy, nonprofit representing a network of over 2,500 family farmers and their supporters organized as 13 Chapters in the four Hawai'i Counties. In 2017, the Legislature awarded Hawaii Farmers Union Foundation a Grant in Aid project to Strengthen Regional Food Hubs in Hawai'i. As part of that project, the coordinator, Dr. Saleh Azizi, facilitated a focus group among multiple food hubs to improve our understanding of the resources needed for food hubs to be sustainable and respond to demand for local food, especially by the Farm-to-State initiative. The result of the focus group, which was participated by a majority of Hawaii's existing food hubs, are now in front of you, a Food Hub Pilot program to support existing and new food hubs in all of Hawaii's counties.

Almost all food hub developments in Hawaii were launched by family farmers to help other small-scale family farming. Food hubs are entities in or nearby farm communities that support small farmers with aggregation, processing, marketing and sale of locally grown food. Research by Dr. Noa Lincoln at UH Manoa suggest that much of the local food grown by Hawaii's residents and small farmers is unaccounted for and often overlooked in official reporting about local food production. The dark number of unaccounted local food is now being captured by food hubs all over Hawaii. Less than ten food hubs that are affiliated with HFUU facilitate marketing, sale and delivery of local food on behalf of over 500 family farmers. A recent survey of 8 food hubs by Hawaii Farmers Union United shows that they represent over 650 small and medium farms and generate 2.7 million in income annually in local food sales.

HAWAII FARMERS UNION UNITED

Vincent Mina, President



67-332 Kaiea Pl.  
Waialua, HI 96791-  
9501  
808-383-4481  
[www.NSEVP.org](http://www.NSEVP.org)

February 18, 2020

TESTIMONY IN SUPPORT

**SUBJECT:** Support for HB1892 – Food Hub Pilot Program

(Date/Time of Hearing: 2/20/2020 at 9:35 a.m.)

Dear Chair Luke, Vice Chair Cullen and members of the Finance committee,

On behalf of the North Shore Economic Vitality Partnership (North Shore EVP), I would like to extend our full support of HB1892, which will establish a five-year food hub pilot program within the Department of Agriculture.

The North Shore EVP was formed in 2015 as a result of a comprehensive, community-based economic analysis that identified the need for a food hub to fill serious gaps in the food supply chain of the North Shore region of Oahu. Our non-profit organization worked with community leaders to develop realistic strategic plans focused on securing that critical infrastructure and providing new opportunities for ag and ag-tourism businesses and creation of new jobs in agriculture in the region.

As we started planning for a food hub we became aware of the Food Safety & Modernization Act (FSMA) and the impact that law would have on the operations of the facility. Specifically, we anticipated that the target markets of the food hub (schools, hotels, etc.) would eventually require documentation of food safety practices from the growers. USDA and Hawaii Department of Agriculture data indicated that very few farms in Hawaii had such training and documentation.

We subsequently started a USDA GroupGAP program that allows groups of farms to work together to obtain their USDA Harmonized GAP certification and spread the cost savings across all members of the group. In December 2019 we certified 2 more farms on Oahu and in January 2020 the program successfully passed its USDA Harmonized GAP audit. We are now working with farms on Oahu, Hawaii Island, and Kauai. We are the 15<sup>th</sup> GroupGAP program in the country and are currently the only food safety training program focused on farm certification and FSMA compliance in the state.

With the GroupGAP program now operating statewide we have recently turned our attention back to the North Shore regional food hub. Our research indicates that in Hawaii a viable food hub will require approximately 7,500ft<sup>2</sup> of floor space (2,000ft<sup>2</sup> refrigerated), 7-10 employees, 1-2 trucks and gross revenue of ~\$1.5 million or more. Contrary to the legislature's findings, there are in fact several avenues of federal funding available for construction of such facilities including USDA Rural Business Development grants, USDA Community Facilities grant/loan packages, and USDA Rural Energy grants to name but a few. In addition, the state has several programs that would directly benefit a food hub project including Enterprise Zones and DBEDT's Manufacturing Assistance Program (MAP).

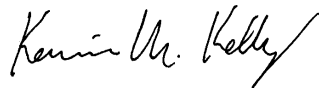
While we applaud the legislature for its recognition of the role food hubs can play in meeting state goals of doubling the food supply and promoting food resiliency in Hawaii,



we also recognize that regions across the state have similar challenges and that there is not a silver bullet that will address the needs of every community. We therefore ask that this bill be amended to include funding for food hub planning as one of the initial start-up grant priority areas. As alluded to above funding and construction of a food hub at the scale needed to insure profitability requires significant coordination of stakeholders and resources. It requires feasibility studies and master planning. And, because of the competitive nature of some awards and grant funding cycles, the entire process can be expected to take from 2-3 years before construction begins.

HB1892 is a positive step in the right direction for establishing a network of food hubs across the state that can open new markets for small farms, increase the availability of fresh, locally grown fruits and vegetables and expand the tax base through new job creation and import substitution. North Shore EVP strongly supports this bill.

Sincerely,

A handwritten signature in black ink that reads "Kevin M. Kelly". The signature is written in a cursive style with a large, sweeping flourish at the end.

Kevin Kelly  
President & CEO  
North Shore EVP

**HB-1892-HD-1**

Submitted on: 2/19/2020 8:19:15 AM

Testimony for FIN on 2/20/2020 11:00:00 AM

| <b>Submitted By</b> | <b>Organization</b>          | <b>Testifier Position</b> | <b>Present at Hearing</b> |
|---------------------|------------------------------|---------------------------|---------------------------|
| Suellen Barton      | Maui Farmers Union<br>United | Support                   | No                        |

Comments:

**HB-1892-HD-1**

Submitted on: 2/19/2020 9:12:59 AM

Testimony for FIN on 2/20/2020 11:00:00 AM

| <b>Submitted By</b> | <b>Organization</b>                                   | <b>Testifier Position</b> | <b>Present at Hearing</b> |
|---------------------|-------------------------------------------------------|---------------------------|---------------------------|
| Harriet Witt        | Hawaii Farmers Union<br>United - Haleakala<br>Chapter | Support                   | No                        |

Comments:

We are dangerously dependent on the mainland for our food. If we want to declare our independence of this, we need to develop food hubs for farmers who are growing for local consumption. Please support this bill.



Date: February 19, 2020

To: The Honorable Sylvia Luke, Chair  
The Honorable Ty Cullen, Vice Chair  
Members of the House Committee on Finance

From: Lydi Bernal, Coordinator, Hawai'i Farm to School Hui

Re: SUPPORT for HB1892 HD1, Relating to a Food Hub Pilot Program

Hrg: February 20, 2020 at 11:00am at Conference Room 308

---

Aloha and thank you for the opportunity to testify in **support of HB1892 HD1**, which requires the Hawai'i Department of Agriculture (HDOA) to establish a five-year food hub pilot program and provides for the awarding of grant funding to establish and expand food hubs.

The Hawai'i Public Health Institute (HIPHI) works to advance policy and systems change to reduce disparities and improve the health of Hawai'i residents. HIPHI is home to the Obesity Prevention Task Force<sup>1</sup> and the Hawai'i Farm to School Hui<sup>2</sup>.

Through our extensive experience with strengthening Hawaii's farm to school movement over the past decade, it has become abundantly clear that **food hubs are an absolutely essential and key component to regenerating Hawaii's community food systems**, and thus to achieving food security and food self sufficiency in Hawai'i. This bill is critically important for supporting the sustainability and growth of small family farms (which constitute 95% of all farms in Hawai'i<sup>3</sup>) by significantly expanding their access to large institutional markets such as the Hawai'i Department of Education (HIDOE).

On January 30, 2020 the Hawai'i Farm to School Hui, HIDOE School Food Services Branch (SFSB), and partners hosted a **webinar for farmers and distributors** on supplying fresh and local produce to HIDOE. The turnout was impressive with over 120 registered participants. Importantly the three panelists representing those with experience sourcing local produce to HIDOE were from **community-based food hubs**, including the Kohala Food Hub, Hawai'i 'Ulu Cooperative, and Sustainable Molokai. Each entity serves as a regional aggregation center, sourcing from dozens of small family farms and supplying thousands of pounds of locally grown foods annually to HIDOE SFSB.

Thanks to the **strategic investments** made during the last several years by the Hawai'i State Legislature (including funding for the HDOA Hawai'i Farm to School Program, HIDOE SFSB Farm to School Coordinator, and HDOA Farm to State positions), and the focused efforts of a

multitude of community partners, we are beginning to see the first fruits of Hawaii's farm to school movement. We respectfully request that you to **please pass this bill as an essential next step** toward achieving our shared vision for food security and food self sufficiency in Hawai'i!

Me Ke Aloha,

Lydi Bernal  
Coordinator, Hawai'i Farm to School Hui  
Member, Obesity Prevention Task Force  
Hawai'i Public Health Institute

---

<sup>1</sup> Created by the legislature in 2012, the **Obesity Prevention Task Force** is comprised of over 40 statewide organizations, and works to make recommendations to reshape Hawaii's school, work, community, and health care environments, making healthier lifestyles obtainable for all Hawai'i residents.

<sup>2</sup> The **Hawai'i Farm to School Hui** is a statewide network comprised of five island-level networks, community organizations, schools, state agencies, and other food systems stakeholders with a collective mission to strengthen Hawaii's farm to school movement. The three pillars of successful farm to school programs are 1) school gardens, 2) agriculture, culinary, nutrition, and food systems education, and 3) school food improvements through local food procurement. The Hawai'i Farm to School Hui formed in 2010 and became a program of HIPHI in 2017.

<sup>3</sup> United States Department of Agriculture (USDA) **2017 Census of Agriculture**. Small farms are defined by USDA as earning less than \$250,000 in gross sales per year, which applies to 5,250 of 5,521 (95%) farms in Hawai'i. Importantly, 75% (3998 of 5316) of Hawaii's farms are one to nine acres in size.

# KAHANA FOUNDATION

## TESTIMONY OF THE KAHANA FOUNDATION IN REGARD TO HB1892 HD1 RELATING TO A FOOD HUB PILOT PROGRAM BEFORE THE COMMITTEE ON FINANCE FEBRUARY 20, 2020 11:00AM ROOM 308

Dear Chair Sylvia Luka, Vice Chair Ty J.K Cullen and Members of the Committee,

My name is Tenaiya Brookfield, and I am the Co-Founder & Director of Outreach at the Kahana Foundation. We are a Hawai'i-based environmental awareness organization working to improve our community's understanding and support for sustainable change.

Kahana Foundation **supports** HB 1892 HD1, relating to a Food Hub Pilot Program requiring the Department of Agriculture to establish a 5-year food hub pilot program, for the following reasons:

### **Help Achieve State Sustainability Goals**

Food security and sustainability is of critical importance for Hawaii. The State Department of Agriculture estimated that 80 - 90% of food in Hawaii is imported<sup>1</sup>. Should an interruption occur due to natural disaster or other external factors beyond the State's control, current food sources would last just 3-10 days<sup>2</sup>.

The Aloha+ challenge aims to improve this by calling for the doubling of local food production by 2030<sup>3</sup>. In order for farmers to produce more food, they need logistical assistance to focus on what they do best; producing more local food. Without this support, it is unlikely Hawaii can achieve its sustainability goals.

### **Farmers Can't Do This on Their Own**

Large obstacles currently exist for small farmers to get their food to market. A full time employee would be required to engage in market research, marketing of their farm, pitching or altering crops and services, negotiating contracts, balancing supply and demand, and maintaining relationships<sup>4</sup>. Many farmers don't have the resources to showcase their products at just one farmer's market on one island, let alone connect with larger grocery chains and hundreds of restaurants, schools and businesses.

Additional resources and manpower is required for processing, certification, insurance, accounting, refrigeration, and transportation. Consolidating these efforts not only removes barriers for farmers who wouldn't have been able to scale before, while providing the economic benefit of new jobs.

---

<sup>1</sup> "Increased Food Security And Self Sufficiency - Hawaii.gov."  
[http://files.hawaii.gov/dbedt/op/spb/INCREASED\\_FOOD\\_SECURITY\\_AND\\_FOOD\\_SELF\\_SUFFICIENCY\\_STRATEGY.pdf](http://files.hawaii.gov/dbedt/op/spb/INCREASED_FOOD_SECURITY_AND_FOOD_SELF_SUFFICIENCY_STRATEGY.pdf).

<sup>2</sup> "hawaii emergency management agency - Hawaii DOD." 7 Mar. 2018,  
[https://dod.hawaii.gov/hiema/files/2018/04/Hi\\_EMA-vulnerability-presentation.pdf](https://dod.hawaii.gov/hiema/files/2018/04/Hi_EMA-vulnerability-presentation.pdf).

<sup>3</sup> "Aloha+ Challenge: A Culture of Sustainability – He Nohona ...." 30 Jun. 2016,  
<https://sustainabledevelopment.un.org/partnership/?p=8026>.

<sup>4</sup> "Food Value Chains and Food Hubs | Agricultural Marketing ...."  
<https://www.ams.usda.gov/services/local-regional/food-hubs>.

## Small Farms are Instrumental to Hawaii's Soil & Ecosystem Integrity

According to the 2017 USDA NASS Census of Agriculture, 66% of farms in the State of Hawaii are small, ranging between 1–9 acres<sup>5</sup>. Small farms usually have a more diverse cropland, while large producers tend to focus on monoculture (single crop production)<sup>6</sup>. Allowing small farmers to participate in larger markets will ensure their economic survival and subsequently Hawaii's long term ecosystem survival.

The negative effects of monoculture are far reaching, compounding, economically unsustainable in the long term, and in some cases can cause irreversible damage to ecosystems<sup>7</sup>. When a single crop is grown, biodiversity is compromised, crops are more susceptible to harmful organisms, pesticide and synthetic fertilizer use increases, top soil degradation occurs, groundwater pollution of chemicals is prevalent, and surrounding ecosystems are compromised. The EPA reports that although coral reefs face numerous threats, many come directly from agricultural pollution<sup>8</sup>.

## Helps Businesses & Families Choose Local

Families access to local food is limited to what items are stocked in large chain grocery stores, or select few farmers markets on certain days of the week. Virtual food hubs can be set up to allow families to order food online at one place but receive products from a variety of farmers<sup>9</sup>. Barriers for businesses to source from small local farms would also be lowered. Instead of being forced to work with the products of one large supplier of often imported products, food hubs would open the doors to resources and competition from a variety of local farms.

Kahana Foundation **supports** HB1892 HD1 and thanks you for this opportunity to testify.

Respectfully,



Tenaiya Brookfield  
Co-Founder & Director of Outreach  
Kahana Foundation  
Contact@KahanaFoundation.org

---

<sup>5</sup> "228 Hawaii 2017 Census of Agriculture - National Agricultural ...."  
[https://www.nass.usda.gov/Publications/AgCensus/2017/Full\\_Report/Volume\\_1,\\_Chapter\\_2\\_County\\_Level/Hawaii/st15\\_2\\_0008\\_0008.pdf](https://www.nass.usda.gov/Publications/AgCensus/2017/Full_Report/Volume_1,_Chapter_2_County_Level/Hawaii/st15_2_0008_0008.pdf).

<sup>6</sup> "Crop Species Diversity Changes in the United States ... - PLOS." 25 Aug. 2015,  
<https://journals.plos.org/plosone/article?id=10.1371/journal.pone.0136580>.

<sup>7</sup> "The Dangers of Monoculture Farming - Challenge Advisory." 7 Oct. 2018,  
<https://www.challenge.org/knowledgeitems/the-dangers-of-monoculture-farming/>.

<sup>8</sup> "Threats to Coral Reefs | Coral Reefs | US EPA." 3 May. 2018, <https://www.epa.gov/coral-reefs/threats-coral-reefs>.

<sup>9</sup> "Virtual food hubs tap into local food markets - USDA Rural ...."  
<https://www.rd.usda.gov/sites/default/files/CoopMag-may11.pdf>.

**HB-1892-HD-1**

Submitted on: 2/18/2020 9:12:25 PM

Testimony for FIN on 2/20/2020 11:00:00 AM

| <b>Submitted By</b> | <b>Organization</b>       | <b>Testifier Position</b> | <b>Present at Hearing</b> |
|---------------------|---------------------------|---------------------------|---------------------------|
| Jacob Nelson        | National Hemp Association | Support                   | No                        |

Comments:

Almost all food hub developments in Hawaii were launched by family farmers to help other small-scale family farming. Food hubs are entities in or nearby farm communities that support small farmers with aggregation, processing, marketing and sale of locally grown food. Research by Dr. Noa Lincoln at UH Manoa suggest that much of the local food grown by Hawaii's residents and small farmers is unaccounted for and often overlooked in official reporting about local food production. The dark number of unaccounted local food is now being captured by food hubs all over Hawaii. Less than ten food hubs that are affiliated with HFUU facilitate marketing, sale and delivery of local food on behalf of over 500 family farmers. A recent survey of 8 food hubs by Hawaii Farmers Union United shows that they represent over 650 small and medium farms and generate 2.7 million in income annually in local food sales.



**HB-1892-HD-1**

Submitted on: 2/18/2020 8:17:13 PM

Testimony for FIN on 2/20/2020 11:00:00 AM

| <b>Submitted By</b> | <b>Organization</b> | <b>Testifier Position</b> | <b>Present at Hearing</b> |
|---------------------|---------------------|---------------------------|---------------------------|
| Helmut Klauer       | A'a Li'i Farm       | Support                   | No                        |

Comments:

I grow jicama and would like to supply the whole Big Island and need a way to get jicama to the other side of the island and maybe beyond.

**HB-1892-HD-1**

Submitted on: 2/18/2020 8:46:59 PM

Testimony for FIN on 2/20/2020 11:00:00 AM

| <b>Submitted By</b> | <b>Organization</b> | <b>Testifier Position</b> | <b>Present at Hearing</b> |
|---------------------|---------------------|---------------------------|---------------------------|
| winsome williams    | La Kahea LLC        | Support                   | No                        |

Comments:

**HB-1892-HD-1**

Submitted on: 2/18/2020 9:02:37 PM

Testimony for FIN on 2/20/2020 11:00:00 AM

| <b>Submitted By</b> | <b>Organization</b>      | <b>Testifier Position</b> | <b>Present at Hearing</b> |
|---------------------|--------------------------|---------------------------|---------------------------|
| Melinda Caroll      | When We Shine Foundation | Support                   | No                        |

Comments:

Aloha, On behalf of myself, my family and my non-profit When We Shine, a community health organization, we stand in strong support of this bill, HB 1892 HD1. It's time for Hawai'i to become more responsible for our own food sources and to share them throughout our communities. Food security is a necessity for our islands, lest we go the way of Puerto Rico when the big hurricane hit. Be prepared!!

Melinda Caroll, Ulupalakula, Maui



## **Strong Support for HB1892, Relating to a Food Hub Pilot Program**

Date: February 19, 2020  
To: The Honorable Sylvia Luke, Chair  
The Honorable Ty Cullen, Vice Chair  
Members of the House Committee on Finance

From: Debbie Millikan, Coordinator, Oahu Farm to School Network  
Re: STRONG SUPPORT for HB1892 HD1, Relating to a Food Hub Pilot Program  
Relating to the Hawai'i Farm to School Program  
Hearing: February 20, 2020 at 11:00am at Conference Room 308

Dear Members of the House Committee on Finance:

I am writing in **STRONG SUPPORT of HB1892 HD1** which requires the Hawai'i Department of Agriculture (HDOA) to establish a five-year food hub pilot program and provides for the awarding of grant funding to establish and expand food hubs.

Founded in 2012 and coordinated through 'Iolani School and Pacific Resources for Education and Learning (PREL), OFSN works to strengthen and connect farm to school programs on O'ahu by building the network of service providers and producing professional development and policy advocacy opportunities for stakeholders. This bill directly addresses one of our most pressing needs, building our network of community-based food hubs to support HIDOE school cafeterias. OFSN is in strong support of this bill.

Thank you for allowing this opportunity to submit testimony. I respectfully ask you to pass this measure out of committee.

Mahalo,

Debbie Millikan, Coordinator, Oahu Farm to School Network



2/19/2020

TESTIMONY IN STRONG SUPPORT OF HB1892 HD1 BEFORE THE HOUSE COMMITTEE ON FINANCE

Aloha Chair Luke and Members of the Finance Committee,

Alternative Structures International (dba Kahumana Organic Farms), a 501(c) 3 non-profit organization operating on 50 acres in Lualualei Valley in Waianae. Since its establishment in 1974, Kahumana has integrated social services with training venues and social ventures that work toward three goals: 1. Ending Local Family Homelessness, 2. Providing Services for People With Developmental Disabilities, and 3. Lowering Hawaii's Dependence on Imported Food.



Image 1- Kahumana Farm Hub. In 2017, The Grants-in-Aid funded Hawaii Farmers Union Foundation grant to strengthen community food hubs among them the Kahumana Farm Hub. Currently, KFH supports over 100 Ohana growers from the Leeward Coast of Oahu by assisting growers with marketing and sale of their locally grown fruits and vegetables.

In 2017, Kahumana launched Kahumana Farm Hub (KFH) with the mission of connecting local growers with local markets. The hub facilitates sales on behalf of small farmers and backyard growers on the Leeward Coast of Oahu. The hub has been a powerful reminder of how Hawaii residents can contribute to food security. In the first 2 years KFH generated a total of \$280,499 of which \$204,325 was paid directly to over 100

growers (see image 1). KFH shows that multiple small farmers and backyard growers create a resilient network illustrating the strength in numbers of backyard grower and their contribution to Hawaii's local food supply.

Sincerely,

Christian Zuckerman  
Farm Director  
Kahumana Organic Farms

86-660 Luualalei Homestead Road  
96792, Waianae HI

**HB-1892-HD-1**

Submitted on: 2/19/2020 10:36:09 AM

Testimony for FIN on 2/20/2020 11:00:00 AM

| <b>Submitted By</b> | <b>Organization</b> | <b>Testifier Position</b> | <b>Present at Hearing</b> |
|---------------------|---------------------|---------------------------|---------------------------|
| Jesse Lipman        | Kokua Kalihi Valley | Support                   | No                        |

Comments:

Aloha,

My name is Jesse Lipman and I am the Food Programs Coordinator for Kokua Kalihi Valley CFS. Over the past 10 years we have been developing programs for the Kalihi community to bring healthy local produce to primarily low income residents. Since 2013 we have secured over \$1,200,000 in grant funding to support local farmers and create a community food hub centered around the nutritious cultural foods familiar to Kalihi residents. This food hub model works to support small and emerging farmers insuring our capacity to feed ourselves in the future. It connects our urban residents to locally grown food increasing health and sustaining vital cultural connections to the foods of the Pacific. And it lowers our carbon footprint and dependence on imported foods. Unfortunately, for those of us in the non-profit sector doing local food program development we have seen a reduction in federal and foundation funding opportunities for food system work making the commitment of state funding agencies and appropriations crucial to sustaining and expanding the local food system growth with so many health, economic and environmental benefits. We strongly support this pilot project regardless of whether it directly benefits our program because it will strengthen our health and provide a tangible commitment to the climate and food system challenges that grow each day. Please support the work of farmers, aggregators, and food hub developers to solidify this local solution to food sustainability.

Sincerely,

Jesse Lipman

**HB-1892-HD-1**

Submitted on: 2/19/2020 2:45:12 PM

Testimony for FIN on 2/20/2020 11:00:00 AM

| <b>Submitted By</b> | <b>Organization</b> | <b>Testifier Position</b> | <b>Present at Hearing</b> |
|---------------------|---------------------|---------------------------|---------------------------|
| NANCY JONES         | Jones Family Farm   | Support                   | No                        |

Comments:

Wednesday, Feb. 20, 2020 at 2PM / House Committee on Finance

**TESTIMONY IN SUPPORT OF HB 1892, H.D. 1 WITH PROPOSED CHANGES**

Aloha Chair Luke, Vice-Chair Cullen, Rep. Eli, and Rep. Gates, and Honorable Committee Members:

My family and I submit this testimony in support of HB 1892, H.D.1 – with amendments/restorations -- to establish a food hub pilot program beginning in fiscal year 2020 and extending until 2025. We especially support the idea of increasing access to locally grown food and improving Hawai`i's food security via this food hub pilot program through HB 1892, H.D. 1's proposed grant-award process. However, we are concerned about specific language changes in HB 1892 that occurred in H.D. 1. In order for this program to effectively assist Hawai`i's growers in each county statewide and increase Hawai`i's food security, we respectfully request that your Committee please:

1. RESTORE to the language in the original HB 1892 to an appropriation to "\$1,000,000" and add "or more" to furnish existing and/or start-up food hubs on islands like Kaua`i to operate successfully – ideally \$1,000,000 should be allocated to each County to ensure food hub and grower success.
2. RESTORE to the original effective date to July 1, 2020 but not later than September 1, 2020 to properly fund the food hub program statewide and enable growers to achieve improved food security as directed by Governor Ige.

As small-family farmers, we experience many difficulties along the path to our final markets. These include lack of: market intelligence, pricing information, proper crop selection based on market trends, technical support, and post-harvest handling facilities (packing, grading, food-safety certification, packaging, etal.) However, qualified, small-scale, food hubs like those servicing a limited number of growers – for example, Kahumana Organic Farm – provide many of these otherwise-unavailable services and market opportunities to local farmers.

Typical small farmers cannot access major local supermarket chains or even small supermarkets as they may lack of sufficient quantities to approach these markets AND also due to competition from other small farmers in a 10-mile radius. In addition, these



farmers may have no way of knowing about fair pricing. Likewise, many of these same farmers also do not have access to the all-important cold-chain to preserve produce quality and shelf-life. It is not unusual for farmers to lose up to 30-percent of their harvested crops due to lack of cold chain facilities. Packaging and specialty markets that pay higher prices for locally-grown produce are also key features of food hubs that can assist Hawai`i's local growers and improve food security for the State.

Accordingly, there is a definite need to financially support existing food hub facilities like Kahumana and those in counties like Kaua`i that do not yet exist, but would benefit growers in each county tremendously. For all of the above reasons, we respectfully urge your committee to pass this bill with the proposed language changes. Thank you very much for this opportunity to present this testimony supporting HB 1892, H.D. 1— with above amendments— and Hawai`i's small farmers.

**HB-1892-HD-1**

Submitted on: 2/18/2020 6:54:52 PM

Testimony for FIN on 2/20/2020 11:00:00 AM

| <b>Submitted By</b> | <b>Organization</b> | <b>Testifier<br/>Position</b> | <b>Present at<br/>Hearing</b> |
|---------------------|---------------------|-------------------------------|-------------------------------|
| Greg Koch           | Individual          | Support                       | No                            |

Comments:

**HB-1892-HD-1**

Submitted on: 2/18/2020 7:08:56 PM

Testimony for FIN on 2/20/2020 11:00:00 AM

| <b>Submitted By</b> | <b>Organization</b> | <b>Testifier Position</b> | <b>Present at Hearing</b> |
|---------------------|---------------------|---------------------------|---------------------------|
| Dianna Wilcox       | Individual          | Support                   | No                        |

Comments:

**HB-1892-HD-1**

Submitted on: 2/18/2020 6:09:59 PM

Testimony for FIN on 2/20/2020 11:00:00 AM

| <b>Submitted By</b> | <b>Organization</b> | <b>Testifier Position</b> | <b>Present at Hearing</b> |
|---------------------|---------------------|---------------------------|---------------------------|
| Scott Crawford      | Individual          | Support                   | No                        |

Comments:

I am submitting support as an individual, but I serve on the Board of Directors for the Hana Chapter of the Hawaii Farmers Union United, and we have just recently launched a new weekly farmers market in Hana, Maui, which has already been a big success in the community. Through my work in establishing the farmers market, I can see the value of one or more food hubs in East Maui, scaled appropriately, to help facilitate the distribution of locally grown food to those most in need.

I urge the committee to support HB1892.

Mahalo for your kind consideration.

**HB-1892-HD-1**

Submitted on: 2/18/2020 6:09:07 PM

Testimony for FIN on 2/20/2020 11:00:00 AM

| <b>Submitted By</b> | <b>Organization</b> | <b>Testifier Position</b> | <b>Present at Hearing</b> |
|---------------------|---------------------|---------------------------|---------------------------|
| Thomas Craig        | Individual          | Support                   | No                        |

Comments:

**HB-1892-HD-1**

Submitted on: 2/18/2020 3:46:15 PM

Testimony for FIN on 2/20/2020 11:00:00 AM

| <b>Submitted By</b> | <b>Organization</b> | <b>Testifier Position</b> | <b>Present at Hearing</b> |
|---------------------|---------------------|---------------------------|---------------------------|
| Alana Busekrus      | Individual          | Support                   | No                        |

Comments:

As a kama'aina, nurse, and mother of four daughters, I support the Food Hubs bill. Food hubs are critical to expanding farm to school and farm to state by allowing small farmers to aggregate, store, wash, pack, market and distribute produce and other foods and to bid on larger contracts. I believe passing this bill will support existing and new farmers by relieving and sharing the challenges of agricultural work and business. Thank you for considering a bill to invest in and regenerate Hawaii's community food systems!

**HB-1892-HD-1**

Submitted on: 2/18/2020 1:32:51 PM

Testimony for FIN on 2/20/2020 11:00:00 AM

| <b>Submitted By</b> | <b>Organization</b> | <b>Testifier Position</b> | <b>Present at Hearing</b> |
|---------------------|---------------------|---------------------------|---------------------------|
| Amy Brinker         | Individual          | Support                   | No                        |

Comments:

**HB-1892-HD-1**

Submitted on: 2/18/2020 7:11:03 PM

Testimony for FIN on 2/20/2020 11:00:00 AM

| <b>Submitted By</b> | <b>Organization</b> | <b>Testifier Position</b> | <b>Present at Hearing</b> |
|---------------------|---------------------|---------------------------|---------------------------|
| Terry Kristiansen   | Individual          | Support                   | No                        |

Comments:

I strongly support this bill for the Food Hub Program. It's a win-win for the farmers and the people of Maui.



**HB-1892-HD-1**

Submitted on: 2/18/2020 7:32:57 PM

Testimony for FIN on 2/20/2020 11:00:00 AM

| <b>Submitted By</b> | <b>Organization</b> | <b>Testifier Position</b> | <b>Present at Hearing</b> |
|---------------------|---------------------|---------------------------|---------------------------|
| Rexann Dubiel       | Individual          | Support                   | No                        |

Comments:

We need to be sustainable. Period.

This bill promotes self-reliance!

Please, support!

**HB-1892-HD-1**

Submitted on: 2/18/2020 7:53:49 PM

Testimony for FIN on 2/20/2020 11:00:00 AM

| <b>Submitted By</b> | <b>Organization</b> | <b>Testifier Position</b> | <b>Present at Hearing</b> |
|---------------------|---------------------|---------------------------|---------------------------|
| sharon Levine       | Individual          | Support                   | No                        |

Comments:

Having local food available to the community is a win win. Please support any bill that helps local farmers producing food for the community is the past and the future.

Mahalo,

Sharon Levine

**HB-1892-HD-1**

Submitted on: 2/18/2020 7:56:09 PM

Testimony for FIN on 2/20/2020 11:00:00 AM

| <b>Submitted By</b> | <b>Organization</b> | <b>Testifier Position</b> | <b>Present at Hearing</b> |
|---------------------|---------------------|---------------------------|---------------------------|
| Martha Lind         | Individual          | Support                   | No                        |

Comments:

My husband and I own and operate a small farm in Upcountry Maui. We both strongly support HB1892 to establish a Food Hub pilot program in Hawaii. With 90% of Hawaii's food brought in from out of state we need to increase local food production and increase access to local food. Food hubs would create self-sufficiency and agricultural vitality. Please vote YES on HB1892.

Mahalo,

Martha and Lars Lind

Olinda, Maui

**HB-1892-HD-1**

Submitted on: 2/18/2020 8:59:00 PM

Testimony for FIN on 2/20/2020 11:00:00 AM

| <b>Submitted By</b> | <b>Organization</b> | <b>Testifier Position</b> | <b>Present at Hearing</b> |
|---------------------|---------------------|---------------------------|---------------------------|
| Eva Lee             | Individual          | Support                   | No                        |

Comments:

More Food Hubs throughout the state will help increase production for a number of Hawaii specialty crops such as Camellia sinensis tea. Your consideration to approve HB1892 will provide the needed assistance for this generation of farmers to pass along to next generation farmers a stronger foundation in food processing and distribution.

**HB-1892-HD-1**

Submitted on: 2/18/2020 9:14:36 PM

Testimony for FIN on 2/20/2020 11:00:00 AM

| <b>Submitted By</b> | <b>Organization</b> | <b>Testifier Position</b> | <b>Present at Hearing</b> |
|---------------------|---------------------|---------------------------|---------------------------|
| Raphiell Nolin      | Individual          | Support                   | No                        |

Comments:

I strongly support food hubs for Hawaii's food security!

**HB-1892-HD-1**

Submitted on: 2/18/2020 9:35:11 PM

Testimony for FIN on 2/20/2020 11:00:00 AM

| <b>Submitted By</b> | <b>Organization</b> | <b>Testifier Position</b> | <b>Present at Hearing</b> |
|---------------------|---------------------|---------------------------|---------------------------|
| Dennis F Lokmer     | Individual          | Support                   | No                        |

Comments:

Andre de Almeida  
86-660 Luualalei Homestead RD  
Waianae, HI 96792

Hawaii State Legislature  
State Capitol  
415 South Beretania ST  
Honolulu, HI 96813

February 18, 2020

TESTIMONY IN STRONG SUPPORT OF HB1892 HD1 BEFORE HOUSE COMMITTEE ON  
AGRICULTURE AND ENVIRONMENT

As an active apprentice of Kahumana's Farm Hub I strongly support HB1892 HD1. On the day to day life at Kahumana's Farm hub I get to interact with each hub member that comes in to get cash for their produce. Some hub members rely on the farm hub to make their lives a little easier. For instance, there is a hub member whose husband recently has been fighting cancer and she does not get the chance to leave her property to sell her bananas. So we instead go to her to make her life a little easier and that way she gets to spend time with her crops and family.

Another example, is a family that goes hiking in the valley and the mountains. The father and son duo enjoy the time together while foraging for fruits to bring to the farm hub. Not only is this family enjoying quality time together in nature, they are getting food for themselves and exchanging some for cash to help with expenses.

Whether families are getting cash to help fill up their gas tanks, or help with the expenses at home, one thing i'm sure is that the farm hub is making people's lives better with fruits that would normally just go to waste. For that reason I firmly believe that HB1892 should pass in order for small farms and families to improve their lives.

Sincerely,

Andre de Almeida  
(808)670-4804

**HB-1892-HD-1**

Submitted on: 2/19/2020 5:09:18 AM

Testimony for FIN on 2/20/2020 11:00:00 AM

| <b>Submitted By</b> | <b>Organization</b> | <b>Testifier Position</b> | <b>Present at Hearing</b> |
|---------------------|---------------------|---------------------------|---------------------------|
| Mark Robert Hanson  | Individual          | Support                   | No                        |

Comments:

Aloha Committee Members, please pass HB1892. To increase Hawaii's food security.

In the face of Climate Change, " acceleration". It is us, that must, make some changes.

Pass All bills! That promote the growing of more food, and protect our watersheds, and ocean.

Reside with all, the life, that lives, in between. The Aloha spirit. Akua's love.

Mark R. Hanson the Sandalwoodman



**HB-1892-HD-1**

Submitted on: 2/19/2020 7:26:52 AM

Testimony for FIN on 2/20/2020 11:00:00 AM

| <b>Submitted By</b> | <b>Organization</b> | <b>Testifier Position</b> | <b>Present at Hearing</b> |
|---------------------|---------------------|---------------------------|---------------------------|
| Jeffrey Bronfman    | Individual          | Support                   | No                        |

Comments:

**HB-1892-HD-1**

Submitted on: 2/19/2020 8:36:13 AM

Testimony for FIN on 2/20/2020 11:00:00 AM

| <b>Submitted By</b> | <b>Organization</b> | <b>Testifier Position</b> | <b>Present at Hearing</b> |
|---------------------|---------------------|---------------------------|---------------------------|
| Megan Blazak        | Individual          | Support                   | No                        |

Comments:

**HB-1892-HD-1**

Submitted on: 2/19/2020 9:16:11 AM

Testimony for FIN on 2/20/2020 11:00:00 AM

| <b>Submitted By</b> | <b>Organization</b> | <b>Testifier Position</b> | <b>Present at Hearing</b> |
|---------------------|---------------------|---------------------------|---------------------------|
| John Douvris        | Individual          | Support                   | No                        |

Comments:

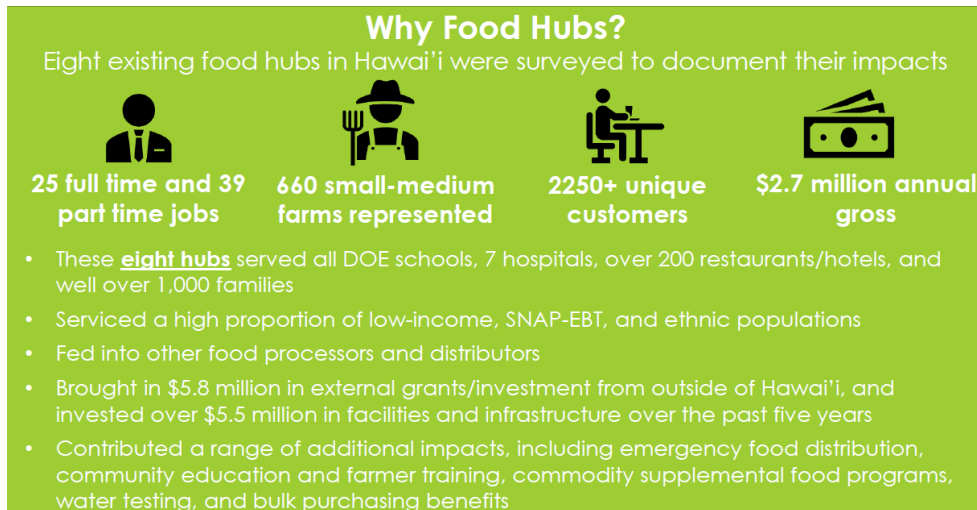
2/19/2020

Public Testimony in Strong Support of HB1892 HD1  
Before the House Committee on Finance

Aloha Chair Luke and Members of the House Finance Committee

Aloha Kakou,

A recent survey of 8 food hubs by the Hawai'i Farmers Union United show that they represent over 650 small and medium farms and generate 2.7 million in income annually in local food sales (see image below).



By way of introduction, I am Saleh Azizi, and I am the Community Economic Development Coordinator at Kahumana Organic Farms, an organization operating for 40 years in Wai'anae to provide services to the most vulnerable members of our community, combat homelessness, provide service for people with disabilities and lower Hawaii's dependence on imported foods through sustainable agriculture.

In 2019, I worked with the Hawaii Farmers Union Foundation as a Food Hub Coordinator. I facilitated meetings with ten existing food hubs to document the obstacles they face in their journey to expand their operations and services for the benefit of small farmers who grow local food for Hawaii's consumers. The observations and recommendations compromised a central part of my PhD. Dissertation that was awarded in 2019 by the Department of Urban and Regional Planning at University of Hawaii at Manoa.

Food hubs have positive effects on economic development far beyond facilitating local market connections for small farmers. Those benefits include creating culturally meaningful jobs in rural areas for residents and more opportunities for construction companies hire for expansion of facilities.

Saleh Azizi Fardkhales, PhD

808-383 5224

[azizi@hawaii.edu](mailto:azizi@hawaii.edu)

**HB-1892-HD-1**

Submitted on: 2/19/2020 12:54:58 PM

Testimony for FIN on 2/20/2020 11:00:00 AM

| <b>Submitted By</b> | <b>Organization</b> | <b>Testifier Position</b> | <b>Present at Hearing</b> |
|---------------------|---------------------|---------------------------|---------------------------|
| Havilah Mills       | Individual          | Support                   | No                        |

Comments:

I stand with the Hawaii Farmer's Union United in supporting this for the reasons that President Vincent Mina noted in his testimony of strong support.

"Almost all food hub developments in Hawaii were launched by family farmers to help other small-scale family farming. Food hubs are entities in or nearby farm communities that support small farmers with aggregation, processing, marketing and sale of locally grown food. Research by Dr. Noa Lincoln at UH Manoa suggest that much of the local food grown by Hawaii's residents and small farmers is unaccounted for and often overlooked in official reporting about local food production. The dark number of unaccounted local food is now being captured by food hubs all over Hawaii. Less than ten food hubs that are affiliated with HFUU facilitate marketing, sale and delivery of local food on behalf of over 500 family farmers. A recent survey of 8 food hubs by Hawaii Farmers Union United shows that they represent over 650 small and medium farms and generate 2.7 million in income annually in local food sales."

**HB-1892-HD-1**

Submitted on: 2/19/2020 3:26:43 PM

Testimony for FIN on 2/20/2020 11:00:00 AM

| <b>Submitted By</b> | <b>Organization</b> | <b>Testifier Position</b> | <b>Present at Hearing</b> |
|---------------------|---------------------|---------------------------|---------------------------|
| Edward Aloï         | Individual          | Support                   | No                        |

Comments:

**LATE**

**HB-1892-HD-1**

Submitted on: 2/19/2020 5:59:16 PM

Testimony for FIN on 2/20/2020 11:00:00 AM

| <b>Submitted By</b> | <b>Organization</b> | <b>Testifier Position</b> | <b>Present at Hearing</b> |
|---------------------|---------------------|---------------------------|---------------------------|
| devin               | Individual          | Support                   | No                        |

Comments:

I think this is a good idea to support local food producers and consumers. It is important that we as an island community establish strong food security and foster local industries. I believe a food hub could help local food producers to market their products and develop new products that can be marketed both within Hawaii and outside. Thank you



**LATE**

Jan 30<sup>th</sup>, 2020



COMMITTEE ON FINANCE

HEARING DATE:

Wednesday, February 20, 2020 at 11:00 a.m.

PLACE:

Conference Room 308

State Capitol

415 South Beretania Street

***Testimony in support of HB 1892***

Farm Link Hawai'i is a food hub that directly supports over 100 farmers, ranchers and producers throughout the state of Hawai'i. Since 2015, Farm Link's online marketplace and delivery service have been making it easy to support local farms. Farm Link currently delivers to commercial buyers, including Foodland and Whole Foods Market in addition to 100+ restaurants, caterers, and schools. We also allow household buyers to order for pickup at designated locations around O'ahu.

I am writing in strong support of HB 1892 to establish a five-year food hub pilot program to increase access to local food. Food hubs operate on extremely thin margins. Establishing and growing a food hub require an extraordinary amount of capital and support to have a chance at survival. The proposed HB 1892 would provide grant assistance to food hubs to reduce risk and increase their impact.

Farm Link Hawai'i has relied heavily on federal and state grants to launch and continue to scale. We would not exist without such assistance and are continually looking for additional support in order to reach financial viability. Please consider passing HB 1892 to help us continue to do work to increase local food production and consumption.

Sincerely,

A handwritten signature in black ink, appearing to read "R Barreca", written over a light blue horizontal line.

Robert Barreca  
Founder and CEO  
Farm Link Hawai'i

**LATE**



February 19, 2020

RE: **SUPPORT for HB1892 HD1**

Aloha Chair Luke, Vice Chair Cullen, and Members of the House Committee on Finance:

Thank you for this opportunity to testify in **SUPPORT** of HB1892 HD1. Blue Zones Project was brought to Hawaii by HMSA to help increase the overall well-being of our communities and to make Hawaii a healthier, happier place to live, work and play. To accomplish that goal, we address ways that we can lower obesity rates, tobacco use, and chronic diseases.

Food hubs can be an especially supportive resource for families to get access to healthy produce, especially in disadvantaged communities with inaccessible fresh produce retailers. These “food desserts” often force families to seek alternative food sources with higher proportions of processed foods, including fast food and pre-packaged foods. At the same time, food hubs require initial start-up investment for shared resources and support, which is why this bill is so critical to helping Hawai’i expand our food hub network.

We are extremely pleased with the success of other ‘food hubs,’ such as the Food Basket on Hawai’i Island, which brings together nonprofits, community leaders, public and private investment, and our local agriculture community for the benefit of our families.

Food hubs can help the families of Hawai’i enjoy healthier lifestyles, which is why Blue Zones Project strongly **supports HB1892 HD1**.

Thank you for this opportunity to testify in support of HB1892 HD1.

A handwritten signature in black ink, appearing to read "Colby Takeda".

Colby Takeda, MBA, MPH  
Senior Manager



**LATE**

**HB-1892-HD-1**

Submitted on: 2/19/2020 10:34:15 PM

Testimony for FIN on 2/20/2020 11:00:00 AM

| <b>Submitted By</b> | <b>Organization</b> | <b>Testifier Position</b> | <b>Present at Hearing</b> |
|---------------------|---------------------|---------------------------|---------------------------|
| Paul Marshall       | Individual          | Support                   | No                        |

Comments:

**LATE**

**HB-1892-HD-1**

Submitted on: 2/19/2020 11:17:18 PM

Testimony for FIN on 2/20/2020 11:00:00 AM

| <b>Submitted By</b>    | <b>Organization</b> | <b>Testifier Position</b> | <b>Present at Hearing</b> |
|------------------------|---------------------|---------------------------|---------------------------|
| "Phil" Augustus Acosta | Aloha Harvest       | Support                   | No                        |

Comments: