

**THE THIRTIETH LEGISLATURE  
APPLICATION FOR GRANTS  
CHAPTER 42F, HAWAII REVISED STATUTES**

Type of Grant Request:

Operating                       Capital

Legal Name of Requesting Organization or Individual:    Dba:

Trees for Honolulu's Future

Amount of State Funds Requested: \$ 141,300

Brief Description of Request (Please attach word document to back of page if extra space is needed):

In Hawaiian, teacher is one of the meanings of kumu and kumulā'au is tree. Trees teach us how to fight climate change, stay cool, reduce run-off, improve learning, and ever so much more. We should listen. This partnership project, will: 1) identify 14 public schools across the state to pilot an approach to tree plantings that includes curriculum and community-building; and 2) update the State Department of Education's tree manual and guidance on landscape management. The result is building capacity within the DOE how to select/plant the Right Tree, in the Right Place, with Right Care.

Amount of Other Funds Available:

State:                      \$ \_\_\_\_\_

Federal:                      \$ \_\_\_\_\_

County:                      \$ \_\_\_\_\_

Private/Other: \$ 46,000 (35% secured)

Total amount of State Grants Received in the Past 5 Fiscal Years:

\$ 11,200

Unrestricted Assets:

\$ 17,934 (as of 12/31/2019)

New Service (Presently Does Not Exist):     Existing Service (Presently in Operation):

Type of Business Entity:

501(C)(3) Non Profit Corporation

Other Non Profit

Other

Mailing Address:

PO Box 12051

City:                                              State:                                              Zip:

Honolulu                                              HI                                              96828

Contact Person for Matters Involving this Application

Name:  
Daniel Dinell

Title:  
President

Email:  
info@treesforhonolulu.org

Phone:  
808-707-6353

Federal Tax ID#:

██████████

State Tax ID#

██████████



Authorized Signature

Daniel Dinell, President

Name and Title

1/16/2020

Date Signed

**received**  
01/17/2020 2c

8:35am

## Application Submittal Checklist

*The following items are required for submittal of the grant application. Please verify and check off that the items have been included in the application packet.*

- 1) Certificate of Good Standing (If the Applicant is an Organization)
- 2) Declaration Statement
- 3) Verify that grant shall be used for a public purpose
- 4) Background and Summary
- 5) Service Summary and Outcomes
- 6) Budget
  - a) Budget request by source of funds ([Link](#))
  - b) Personnel salaries and wages ([Link](#))
  - c) Equipment and motor vehicles ([Link](#))
  - d) Capital project details ([Link](#))
  - e) Government contracts, grants, and grants in aid ([Link](#))
- 7) Experience and Capability
- 8) Personnel: Project Organization and Staffing



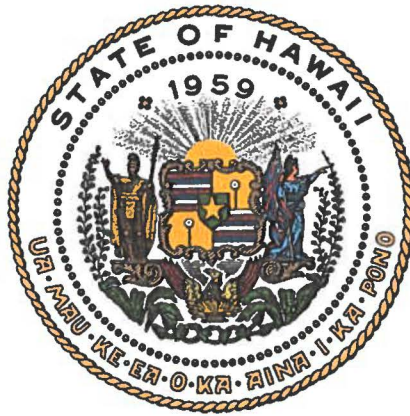
AUTHORIZED SIGNATURE

DANIEL DINELL, PRESIDENT

PRINT NAME AND TITLE

1/16/2020

DATE



## Department of Commerce and Consumer Affairs

### CERTIFICATE OF GOOD STANDING

I, the undersigned Director of Commerce and Consumer Affairs of the State of Hawaii, do hereby certify that

#### TREES FOR HONOLULU'S FUTURE

was incorporated under the laws of Hawaii on 11/30/2016 ; that it is an existing nonprofit corporation; and that, as far as the records of this Department reveal, has complied with all of the provisions of the Hawaii Nonprofit Corporations Act, regulating domestic nonprofit corporations.



IN WITNESS WHEREOF, I have hereunto set my hand and affixed the seal of the Department of Commerce and Consumer Affairs, at Honolulu, Hawaii.

Dated: January 09, 2020

*Catherine P. Awai-Cole*

Director of Commerce and Consumer Affairs



**DECLARATION STATEMENT OF  
APPLICANTS FOR GRANTS PURSUANT TO  
CHAPTER 42F, HAWAII REVISED STATUTES**

The undersigned authorized representative of the applicant certifies the following:

- 1) The applicant meets and will comply with all of the following standards for the award of grants pursuant to Section 42F-103, Hawaii Revised Statutes:
  - a) Is licensed or accredited, in accordance with federal, state, or county statutes, rules, or ordinances, to conduct the activities or provide the services for which a grant is awarded;
  - b) Complies with all applicable federal and state laws prohibiting discrimination against any person on the basis of race, color, national origin, religion, creed, sex, age, sexual orientation, or disability;
  - c) Agrees not to use state funds for entertainment or lobbying activities; and
  - d) Allows the state agency to which funds for the grant were appropriated for expenditure, legislative committees and their staff, and the auditor full access to their records, reports, files, and other related documents and information for purposes of monitoring, measuring the effectiveness, and ensuring the proper expenditure of the grant.
  
- 2) If the applicant is an organization, the applicant meets the following requirements pursuant to Section 42F-103, Hawaii Revised Statutes:
  - a) Is incorporated under the laws of the State; and
  - b) Has bylaws or policies that describe the manner in which the activities or services for which a grant is awarded shall be conducted or provided.
  
- 3) If the applicant is a non-profit organization, it meets the following requirements pursuant to Section 42F-103, Hawaii Revised Statutes:
  - a) Is determined and designated to be a non-profit organization by the Internal Revenue Service; and
  - b) Has a governing board whose members have no material conflict of interest and serve without compensation.

Pursuant to Section 42F-103, Hawaii Revised Statutes, for grants used for the acquisition of land, when the organization discontinues the activities or services on the land acquired for which the grant was awarded and disposes of the land in fee simple or by lease, the organization shall negotiate with the expending agency for a lump sum or installment repayment to the State of the amount of the grant used for the acquisition of the land.

Further, the undersigned authorized representative certifies that this statement is true and correct to the best of the applicant's knowledge.

Trees for Honolulu's Future

(Typed Name of Individual or Organization)



(Signature)

1/16/2020

(Date)

Daniel Dinell

(Typed Name)

President

(Title)



Trees for Honolulu's Future attests that this grant will be used for a public purpose pursuant to Section 42F-102, Hawaii Revised Statutes.

## **II. Background and Summary**

### *1. A brief description of the applicant's background;*

Trees for Honolulu's Future (TFHF) fulfills a critical function not currently provided by other public or private organizations focused on trees. TFHF builds bridges among public agencies, nonprofit organizations, for profit business enterprises, and local communities through facilitation and engagement to accomplish mutual goals related to trees.

TFHF's vision is for a tree-filled Hawaii that preserve and enhance our quality of life, especially in the face of climate change. Our mission is to:

- a) **Educate** our citizenry on the multiple benefits of trees;
- b) **Facilitate** the planning, planting, and maintenance of trees in a sustainable urban forest; and
- c) **Coordinate** and reinforce the tree-planting and maintenance endeavors of public, private, and nonprofit entities.

This Grant-in-Aid (GIA) initiative will allow TFHF to share its expertise with State government and public schools. Although to date TFHF is largely urban and Oahu-focused, our organization has a network of partners that work across the state to make a statewide impact to fulfill the goals and objectives of this GIA application. While TFHF initiatives have been focused on county-level activities, the statewide school system provides a golden opportunity to utilize our expertise, in concert with the DOE leadership, to increase the tree canopy, especially with shade trees, and capitalizing on all the associated benefits.

### *2. The goals and objectives related to the request;*

Listen closely to the *kumulā'au* (trees), which bring us so many benefits. Project objectives are to:

- A. Develop and implement a pilot tree planting program at 14 public schools across the state. Incorporated will be best practices in maintenance/care, with an additional deliverable being written guidelines, a replicable roadmap, to implement future school tree planting; and
- B. Update the State Department of Education's tree manual and guidance on landscape management in order to institutionalize the value and knowledge of trees within the DOE now, and in the future.

Objective A, will include guidelines to develop and implement a tree planting program, integrate the program with school curriculum, and provide mechanism for

community building and engagement. Current tree planting initiatives may result in trees dying before reaching maturity or planting trees that will cause foreseeable conflict with other infrastructure in the future. To avoid this, the pilot program will utilize the updated DOE tree and landscape maintenance resources to guide in species selection, planting locations, and ongoing care and maintenance. A key component is to instill ownership of the process with those closest to the project: students, parents, and school staff to sure that the newly planted trees are well cared for.

Objective B, updating the DOE tree manual and landscape management documents, is essential as they will be the primary technical resources to support the pilot program. Existing DOE tree support documents have not been updated for three decades. Updates will incorporate current methods and best management practices and be a resources for all of the DOE's facilities. It will provide an opportunity to increase institutional awareness, value, and knowledge of trees within the DOE.

The old proverb, "*the best time to plant a tree is 20 years ago, the next best time is today,*" says it all! This is not a superficial "beautification" effort, but a long-term, long-lasting, sustainable improvement for the livability of our keiki and the schools where they learn. Updating existing tree and landscape resource documents to include best management practices for the care of school grounds will reemphasize the DOE's commitment to provide tools to empower, guide, and increase institutional knowledge/capacity. Just as trees are an investment today for tomorrow, this initiative will pay dividends for years to come as the DOE will have updated resources and a roadmap to increase tree canopy at school facilities.

In short, this GIA will complement existing school tree planting efforts and result in a comprehensive set of guidelines providing a "recipe" to ensure the **Right Tree** is planted in the **Right Place** and receives the **Right Care**.

This initiative will tap into those public schools motivated to lead the way, participate, and demonstrate a commitment and readiness. Applications will be solicited directly from elementary, middle/intermediate and high schools as well as from nominations by all 76 legislators. Once applications and nominations are received, TFHF will have follow-up discussions with schools, and work with the respective Complex Area Superintendents to select schools. Two schools will be selected per district, representing a mix of elementary, middle and high schools, for a total of 14 schools.<sup>1</sup> This process will ensure that the program is welcomed by the selected schools, that appropriate strategies tailored to their grade levels are developed.

Goal 1: Collect baseline data

- 1.1 Use trained "citizen foresters," to inventory existing trees at the selected schools and enter the information into a searchable public database. If available, compare the existing school tree master plan with the inventory. Update plan to revise future species selection and tree placement based on contemporary

---

<sup>1</sup> 8 on Oahu, 6 on neighbor islands (4 DOE districts on Oahu, 1 district on Maui, Hawaii, Kauai/Niihau).

arboricultural standards and campus usage patterns, in order to set the stage for more planting. This will include iTree tools (see: <https://design.itreetools.org/>) to identify future eco-value of planted trees.

- 1.2 Produce tree canopy coverage maps, where such data exists, for the selected schools.

Goal 2: Set the stage for success now and in the future by increasing capacity

- 2.1 Work with DOE's leadership (Board, Superintendent, and administration), to embed better care of school trees and landscapes into the DOE's goals and objectives in a meaningful way.
- 2.2 Update the DOE tree and landscaping manuals and provide training to school custodians/principals on Right Tree, Right Place, Right Care. Prepare separate handouts for the custodians on items such as conducting a weed threat assessment and arboricultural practices, such as mulching and watering, in order to facilitate the implementation of best practices.
- 2.3 Develop management approaches and plans based on sound landscape or open space management principles and determination of how this plan can be carried out.<sup>2</sup>
- 2.4 Create written guidelines, a "recipe", for community trees in schools. Guidelines will include not only how schools request/select trees, but also the schools' role in ensuring their care, maintenance, and vitality on the respective campuses. One of the greatest benefit of this initiative is that it organizes stakeholders to care for, and create pride, in their community and schools. It also means more schools, beyond the pilot 14, will benefit.

Goal 3: Pilot and document plantings that include curriculum, care, maintenance

- 3.1 Provide science curriculum that includes interacting with trees on campus specific to the Next Generation Science Standards (NGSS).
- 3.2 Execute planting/curriculum in the 14 selected schools across the state.

The need for more trees in schools and their tremendous benefits is quite evident. The opportunity to link planting trees to curriculum is also very powerful as BizGenics does in their project-based learning Project Lemon Tree proposal in a separate GIA application as part of the Tree Planting Consortium. TFHF is supportive of this, and all efforts, which ensure the right tree, in the right place, receiving the right care. The deliverables of this GIA will benefit all future school planting projects no matter who is the sponsor.

---

<sup>2</sup> A great number of schools have unmaintained areas of vegetation, which create a safety risk with larger trees at the perimeter of these unmaintained areas, e.g. albizia and other species, relative to adjacent play areas, sidewalks and driveways. Existing custodian staff have a hard time keeping up with the challenges of rapid growth of vegetation, weed trees, difficult terrain, and shortage of hours/custodians, yet the DOE doesn't have a vegetation management plan for these areas the way State of Hawaii Department of Transportation does.



3. *The public purpose and need to be served;*

a) **Addressing Climate Change.** Climate change negatively impacts our environment, and these negative impacts are expected to intensify in the future. Some of these impacts are: increasing temperatures, escalating heat islands, rising sea levels; mounting ocean acidity; intensifying weather extremes; and accelerating loss of habitats and species. Trees play a critical role in mitigating climate change through carbon sequestration and storage, as well as in adapting to increased temperatures and storm water caused by climate change.

b) **Bringing the Benefits of Trees to Schools.** Trees, particularly in the form of an expanded urban forest, create multiple benefits well documented by research. Trees create shade and use evapotranspiration to lower ambient air temperature. In addition, trees strategically placed around school buildings can contribute to cooling classrooms to address a key statewide imperative. Trees can also improve the outdoor environment for play and sports as well as shade buildings to reduce AC use. Studies show that trees on school campuses improve educational outcomes. A tree canopy can filter 50% of ultraviolet rays making them a desirable place to gather under and play. Trees also recharge groundwater and decrease surface runoff protecting our reefs. Trees trap pollutants and store CO<sub>2</sub>. Traffic slows (a good thing at and around schools!) due to trees and pedestrians find walking enjoyable, which improves health.

This GIA directly supports the legislature's mandated Hawaii Climate Change Mitigation and Adaptation Commission as well as Act 15 (SLH 2018) that set carbon neutrality as a policy of the State of Hawaii.

4. *Describe the target population to be served; and*

There are multiple benefits to the DOE and the larger community. The updated manuals will provide standardized guidelines for trees and landscape practices and management. School students and staff, present and future, will benefit from having updated tree inventory and tree master plans. The pilot project will develop a replicable methodology to address future school planting initiatives. Curriculum and curriculum aids will be developed that supports NGSS. The larger community will benefit as participants in tree planting projects that will pay dividends for years to come.

5. *Describe the geographic coverage.*

The update of the DOE's manual will support tree-related activities in public schools statewide. Plantings will take place at 8 schools on Oahu and 6 schools on the neighbor islands. The initiative's intent is to accommodate a diverse selection of schools – elementary, middle, high – statewide, including Title 1 schools.

### **III. Service Summary and Outcomes**

1. *Describe the scope of work, tasks and responsibilities;*

TFHF will provide overall management through a Project Manager.

Goal 1.1 will rely on the already proven model of training "citizen forester" volunteers to inventory and map using TreePlotter software. The comparison of the existing inventory to existing school master plans will be contracted to qualified arborists based upon specifications in consultation with the appropriate parties within the DOE. Goal 1.2 will be accomplished in the same contracting model.

Goals 2.1, 2.2, 2.3 and 2.4, the Project Manager will work with certified, qualified arborists, in close cooperation with the DOE, to develop the specific deliverables.

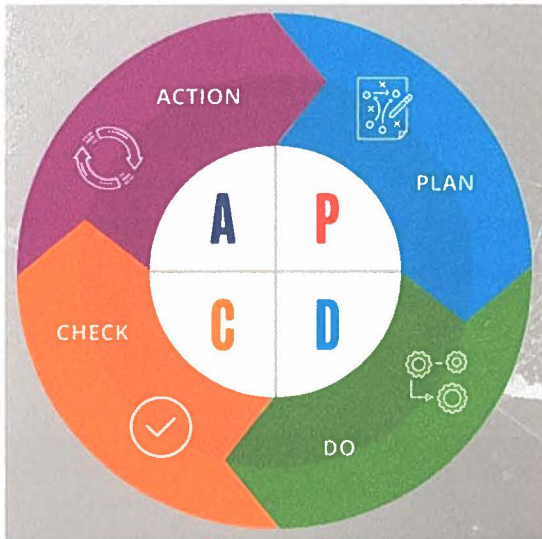
Goals 3.1 and 3.2, the Project Manager will identify qualified curricula creators and local planting partners. The latter includes organizations such as The Outdoor Circle, Maui Green & Beautiful, and Smart Trees Pacific. Healthy Climate Communities has existing approved curriculum and will work to integrate such into the initiative.

2. *Provide a projected annual timeline for accomplishing the results or outcomes of the service;*

Assuming a July 1, 2020 start:

Activity	Start	End
Develop school nomination forms, distribute and return	7/15/2020	9/1/2020
Select 14 schools	9/1/2020	9/30/2020
Citizen Forester training, inventory existing trees at selected schools, compare to existing school master plan, update; produce tree canopy coverage maps where data available	10/1/2020	12/31/2020
Work with DOE leadership on scope of management plan and manual rewrite	7/15/2020	8/15/2020
Develop landscape/open space management principles and update DOE tree manual(s) including training support for ongoing care consistent with industry standards	9/1/2020	7/31/2021
Create "recipe" (guidelines) for trees planting in schools that incorporate best practices and addresses frequent objections such as conflict with infrastructure, maintenance, etc.	1/1/2021	4/30/2021
Review curriculum and prepare for implementation in 2021-22 school year	1/1/2021	5/31/2021
Curriculum rollout and planting in 14 selected schools	8/1/2021	12/31/2021
Periodic inspections of new planting by partners who will give advice and refer to updated DOE tree manuals	10/1/2021	5/30/2022

3. *Describe its quality assurance and evaluation plans for the request. Specify how the applicant plans to monitor, evaluate, and improve their results; and*



We will utilize a Plan-Do-Check-Action cycle approach. Just as a circle has no end, the PDCA cycle is repeated again and again for continuous improvement.

Plan: establish objectives and processes required to deliver the desired results.

Do: allows the plan from the previous step to be done.

Check: evaluate the data

Action (Adjust): this act phase is where a process is improved. Records from the "do" and "check" phases help identify issues with the process.

4. *List the measure(s) of effectiveness that will be reported to the State agency through which grant funds are appropriated (the expending agency). The measure(s) will provide a standard and objective way for the State to assess the program's achievement or accomplishment. Please note that if the level of appropriation differs from the amount included in this application that the measure(s) of effectiveness will need to be updated and transmitted to the expending agency.*

TFHF will work closely with the expending agency, the DOE.

Objective A will be measured through completing inventory, updating tree master plan, and executing new planting at 14 schools.

Objective B will be measured by completion of updated manuals and tree guidance along with an online survey of DOE Administrators as well as custodial staff to gauge their awareness of the:

- philosophy of Right Tree, Right Place, Right Care
- tools delivered and understanding of value of trees to the DOE and satisfaction thereof.

A score of 90% or higher on project awareness/having received and read the material will be the target.

One of the greatest benefit is this initiative is that it organizes stakeholders to care for their own community. This intangible is a wonderful way to create community. Volunteers proudly say things like, "There's MY tree," and ask, "Did you know the story about that kukui tree? Let me tell you." In short, when pride in the school results, the initiative has achieved additional success.



## **IV. Financial**

### **Budget**

1. *The applicant shall submit a budget utilizing the enclosed budget forms as applicable, to detail the cost of the request.*

See attached.

2. *The applicant shall provide its anticipated quarterly funding requests for the fiscal year 2021.*

Quarter 1	Quarter 2	Quarter 3	Quarter 4	Total Grant
\$31,793	\$31,793	\$31,793	\$45,921	\$141,300

3. *The applicant shall provide a listing of all other sources of funding that they are seeking for fiscal year 2021.*

<b>Intended Funding for Fiscal Year 2021</b>			
<b>Funding Source</b>	<b>Program</b>	<b>Est. Amount</b>	<b>Status</b>
Atherton Family Foundation	Trees for Kaimuki	\$15,000	Secured
National Park Service	Trees for Kaimuki	\$40,000 in kind	Secured
Individual Donations	Unrestricted operating	\$10,000	As of Jan 2020, 96% secured
Weinberg Foundation	Trees as integral parts of affordable housing projects	\$500,000	Pending

4. *The applicant shall provide a listing of all state and federal tax credits it has been granted within the prior three years. Additionally, the applicant shall provide a listing of all state and federal tax credits they have applied for or anticipate applying for pertaining to any capital project, if applicable.*

Not applicable.

5. *The applicant shall provide a listing of all federal, state, and county government contracts, grants, and grants in aid it has been granted within the prior three years and will be receiving for fiscal year 2021 for program funding.*

FY2019 \$9,000 Kaulunani Urban and Community Forestry Program (administered by DLNR)  
 FY2020 \$2,200 Kaulunani Urban and Community Forestry Program (administered by DLNR)

6. *The applicant shall provide the balance of its unrestricted current assets as of December 31, 2019.*

\$17,934 (unaudited)

## **V. Experience and Capability**

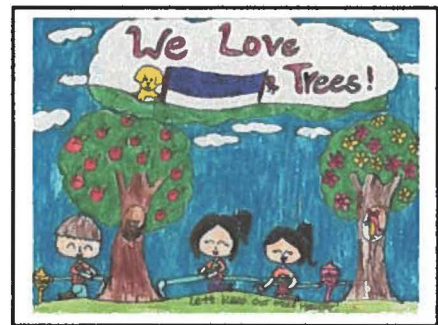
### **1. Necessary Skills and Experience**

*The applicant shall demonstrate that it has the necessary skills, abilities, knowledge of, and experience relating to the request. State your experience and appropriateness for providing the service proposed in this application. The applicant shall also provide a listing of verifiable experience of related projects or contracts for the most recent three years that are pertinent to the request.*

TFHF has convened a wide-range of partners, including City and State officials, academics, developers, arborists, non-profit agency leaders, and community activists. Working as a unified coalition of partner groups, TFHF is able to effectively bridge multi-sector interests and coordinate efforts to reverse our shrinking urban tree canopy. See [www.treesforhonolulu.org](http://www.treesforhonolulu.org) for more information/verification and names of board members and panel of advisers.

Some of TFHF's achievements to date include:

- Managing, for the past three years, student art exhibits involving hundreds of children and has resulted in displays at the Hawaii State Capitol and Honolulu Hale;
- Hosting a 2018 conference, "Growing Our Urban Forest", attended by nearly 300 people, including key local landscape architects, developers, arborists, planners, and policy makers, providing tools and strategies for increasing the urban canopy;
- Facilitating the establishment and initial staffing of the Community Forestry Section of the City & County of Honolulu's Urban Forestry Division;
- Forming an outstanding Panel of Advisers that provide a ready-source of advice and help;
- Adopting a four-year Strategic Plan;
- Collaborating on the critically acclaimed "Oli would Grow" children's book;
- Initiating, in conjunction with Honolulu Theatre for Youth, development of a theatrical play about trees targeting elementary aged children that could, pending funding, be presented statewide; and,
- Conceiving and executing the community-based Trees for Kaimuki Project in cooperation with EnVision Kaimuki, the City and County Division of Urban Forestry, Smart Trees Pacific, The Outdoor Circle, and the National Park Service Rivers, Trails, and Conservation Assistance Program. Volunteers have been trained and are currently inventorying trees. The Honolulu City Council has included \$500,000 in CIP funds for implementation. Additionally, private foundation grant monies have been secured. This will become a replicable model for community action focused on street trees and trees in county-owned parks.





## **2. Facilities**

*The applicant shall provide a description of its facilities and demonstrate its adequacy in relation to the request. If facilities are not presently available, describe plans to secure facilities.*

Not applicable. Most work/meetings will take place in existing DOE schools/offices. Planting will occur at public school sites.

## **VI. Personnel: Project Organization and Staffing**

### **1. Proposed Staffing, Staff Qualifications, Supervision and Training**

*The applicant shall describe the proposed staffing pattern and proposed service capacity appropriate for the viability of the request. The applicant shall provide the qualifications and experience of personnel for the request and shall describe its ability to supervise, train and provide administrative direction relative to the request.*

Daniel Dinell, President, Trees for Honolulu's Future, a seasoned professional, born and raised in Hawai'i, with experience in government, nonprofit and private sector in Hawaii and overseas. Dan will be responsible for overall project management/execution/contracting. (<https://treesforhonolulu.org/>)

Wai Lee, Executive Director, Smart Trees Pacific (STP), will handle Citizen Forester training/support using curriculum, software, and tools they have developed. STP has trained 150 Citizen Foresters to date and works closely with arborists, including master, global arborists. Wai has an MBA from Northeastern University and has been with Smart Trees since 2008. (<https://smarttreespacific.org/>)

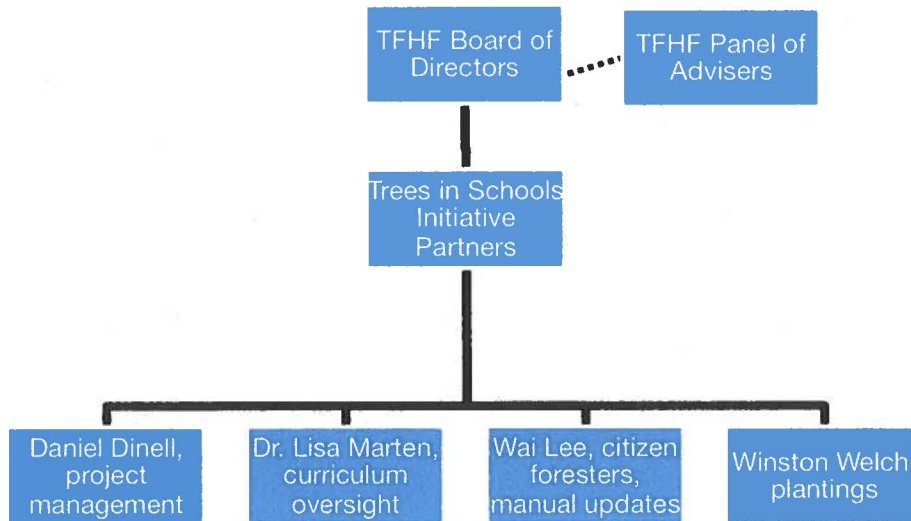
Dr. Lisa Marten, Executive Director & President, Healthy Climate Communities, manages a school-based environmental education program as well as field trips to the project's community forest, and developed science curricula meeting current DOE standards. She will oversee the curriculum development/delivery. (<http://healthyclimatecommunities.org/>)

Winston Welch, Executive Director, The Outdoor Circle, will handle on the ground planting activities. Winston has extensive experience in academia, tourism industry, and nonprofit management. He has been with TOC since 2015 and holds an MBA from the Thunderbird Global School of Management, Arizona State University. (<https://www.outdoorcircle.org/>)



## 2. Organization Chart

*The applicant shall illustrate the position of each staff and line of responsibility/supervision. If the request is part of a large, multi-purpose organization, include an organization chart that illustrates the placement of this request.*



## 3. Compensation

*The applicant shall provide an annual salary range paid by the applicant to the three highest paid officers, directors, or employees of the organization by position title, not employee name.*

All TFHF officers and directors are volunteers. TFHF currently has no employees. The Executive Director who served between February and June 2019 was paid \$2,210 on a 1099-contractor basis.

## VII. Other

### 1. Litigation

There is no pending litigation or any outstanding judgement to which TFHF is a party.

### 2. Licensure or Accreditation

TFHF holds no licensure/accreditation, however, the consulting work to update tree manuals and landscape management plans (Goals 2.2 and 2.3) will be performed by International Society of Arboriculture (ISA) certified and Board certified Master arborists.

### **3. Private Educational Institutions**

Private educational institutions will not be involved. This initiative is available only to public schools (K-12).

### **4. Future Sustainability Plan**

*The applicant shall provide a plan for sustaining after fiscal year 2020-21 the activity funded by the grant if the grant of this application is:*

- (a) Received by the applicant for fiscal year 2020-21, but*
- (b) Not received by the applicant thereafter.*

If GIA funding is received for one year only, this project will continue to have a multi-year impact as the DOE will have the capacity, in the form of the “recipe” to replicate successful tree plantings in future school initiatives as well as the manuals/policies that will guide proper tree selection, siting, and care. For instance, the updated guidance/training for custodian staff and will be consistent with Tree Care Industry Association ANSI A300 standards. In short, this GIA is designed to outlive a fiscal year and set the public schools up for long-term success as it relates to increase the tree, especially shade tree, canopy at its facilities.

TFHF will be a ready, able, and willing partner for the DOE to seek other funding in the future should future grant-in-aid funds not be available. Note, that while the grant is for 12 months in FY2021, the work plan (see Section III, item 2) is for 18 months and funds will be expended into the Fall of 2021 to match the school year and best time to plant.

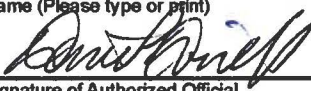


**The Payoff: a school planting at Kailua Intermediate School (12/2019) conducted by TFHF partner Smart Trees Pacific. Seize the opportunity! Involve community and enjoy the myriad benefits of trees within our public schools by increasing capacity and knowledge.**

## BUDGET REQUEST BY SOURCE OF FUNDS

Period: July 1, 2020 to June 30, 2021

Applicant: Trees for Honolulu's Future (Expending Agency State Department of Education)

BUDGET CATEGORIES	Total State Funds Requested (a)	Total Federal Funds Requested (b)	Total County Funds Requested (c)	Total Private/Other Funds Requested (d)
<b>A. PERSONNEL COST</b>				
1. Salaries	46,000			46,000
2. Payroll Taxes & Assessments				
3. Fringe Benefits				
<b>TOTAL PERSONNEL COST</b>	<b>46,000</b>			<b>46,000</b>
<b>B. OTHER CURRENT EXPENSES</b>				
1. Airfare, Inter-Island	4,500			
2. Insurance	1,500			
3. Lease/Rental of Equipment				
4. Lease/Rental of Space				
5. Staff Training	5,500			
6. Supplies	28,000			
7. Telecommunication				
8. Utilities				
9. Citi. Forester/UTC/planting plan Goals 1.1, 1.2, 2.4	14,750			
10. Certified/qualified arborist Goals 2.2 & 2.3	13,650			
11. Curriculum Goal 3.1	12,000			
12. Planting Support	8,400			
13. Maintenance	7,000			
14				
15				
16				
17				
18				
19				
20				
<b>TOTAL OTHER CURRENT EXPENSES</b>	<b>95,300</b>			
<b>C. EQUIPMENT PURCHASES</b>				
<b>D. MOTOR VEHICLE PURCHASES</b>				
<b>E. CAPITAL</b>				
<b>TOTAL (A+B+C+D+E)</b>	<b>141,300</b>			<b>46,000</b>
<b>SOURCES OF FUNDING</b>		Budget Prepared By:		
(a) Total State Funds Requested	141,300	Daniel Dinell <span style="float: right;">808-707-6353</span>		
(b) Total Federal Funds Requested		Name (Please type or print) <span style="float: right;">Phone</span>		
(c) Total County Funds Requested				
(d) Total Private/Other Funds Requested	46,000	Signature of Authorized Official <span style="float: right;">Date</span>		
<b>TOTAL BUDGET</b>	<b>187,300</b>	Daniel Dinell, President		
		Name and Title (Please type or print)		



## BUDGET JUSTIFICATION - PERSONNEL SALARIES AND WAGES

Period: July 1, 2020 to June 30, 2021

Applicant: Trees for Honolulu's Future

POSITION TITLE	FULL TIME EQUIVALENT	ANNUAL SALARY A	% OF TIME ALLOCATED TO GRANT REQUEST B	TOTAL STATE FUNDS REQUESTED (A x B)
Project Manager	1.0	\$92,000.00	50.00%	\$ 46,000.00
				\$ -
				\$ -
				\$ -
				\$ -
				\$ -
				\$ -
				\$ -
				\$ -
				\$ -
				\$ -
				\$ -
				\$ -
				\$ -
				\$ -
				\$ -
<b>TOTAL:</b>				<b>46,000.00</b>
<b>JUSTIFICATION/COMMENTS:</b>				
Project Manager will be a 1099 contracted position; thus no payroll/fringe expense				

## BUDGET JUSTIFICATION - EQUIPMENT AND MOTOR VEHICLES

Period: July 1, 2020 to June 30, 2021

Applicant: Trees for Honolulu's Future

DESCRIPTION EQUIPMENT	NO. OF ITEMS	COST PER ITEM	TOTAL COST	TOTAL BUDGETED
Not Applicable			\$ -	
			\$ -	
			\$ -	
			\$ -	
			\$ -	
TOTAL:				
JUSTIFICATION/COMMENTS:				

DESCRIPTION OF MOTOR VEHICLE	NO. OF VEHICLES	COST PER VEHICLE	TOTAL COST	TOTAL BUDGETED
Not Applicable			\$ -	
			\$ -	
			\$ -	
			\$ -	
			\$ -	
TOTAL:				
JUSTIFICATION/COMMENTS:				

## BUDGET JUSTIFICATION - CAPITAL PROJECT DETAILS

Period: July 1, 2020 to June 30, 2021

Applicant: Trees for Honolulu's Future

FUNDING AMOUNT REQUESTED						
TOTAL PROJECT COST	ALL SOURCES OF FUNDS RECEIVED IN PRIOR YEARS		STATE FUNDS REQUESTED	OTHER SOURCES OF FUNDS REQUESTED	FUNDING REQUIRED IN SUCCEEDING YEARS	
	FY: 2018-2019	FY: 2019-2020	FY:2020-2021	FY:2020-2021	FY:2021-2022	FY:2022-2023
PLANS						
LAND ACQUISITION						
DESIGN						
CONSTRUCTION						
EQUIPMENT						
<b>TOTAL:</b>						
<b>JUSTIFICATION/COMMENTS: Not Applicable</b>						



**GOVERNMENT CONTRACTS, GRANTS, AND / OR GRANTS IN AID**

Applicant: Trees for Honolulu's Future

Contracts Total: 11,200

	<b>CONTRACT DESCRIPTION</b>	<b>EFFECTIVE DATES</b>	<b>AGENCY</b>	<b>GOVERNMENT ENTITY (U.S. / State / Haw / Hon / Kau / Mau)</b>	<b>CONTRACT VALUE</b>
1	"Growing our Urban Forest" Conference and follow-on activities (funded through Kaulunani Urban and Community Forestry Program)	FY2019 (closed out 6/2019)	DLNR	State	9,000
2	"Da Tree" working title for theatrical treatment (funded through Kaulunani Urban and Community Forestry Program)	FY2020 (active)	DLNR	State	2,200
3					
4					
5					
6					
7					
8					
9					
10					
11					
12					
13					
14					
15					
16					
17					
18					
19					
20					