

Application Submittal Checklist

The following items are required for submittal of the grant application. Please verify and check off that the items have been included in the application packet.

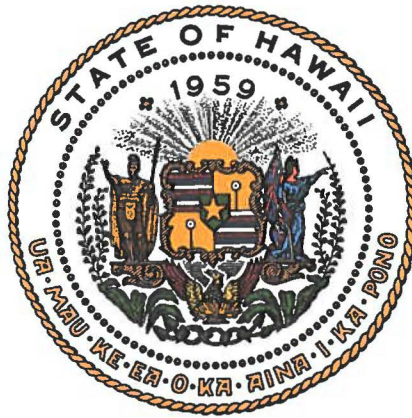
- 1) Certificate of Good Standing (If the Applicant is an Organization)
- 2) Declaration Statement
- 3) Verify that grant shall be used for a public purpose
- 4) Background and Summary
- 5) Service Summary and Outcomes
- 6) Budget
 - a) Budget request by source of funds ([Link](#))
 - b) Personnel salaries and wages ([Link](#))
 - c) Equipment and motor vehicles ([Link](#))
 - d) Capital project details ([Link](#))
 - e) Government contracts, grants, and grants in aid ([Link](#))
- 7) Experience and Capability
- 8) Personnel: Project Organization and Staffing


AUTHORIZED SIGNATURE

HOLLY KESSLER, EXECUTIVE DIRECTOR
PRINT NAME AND TITLE

JANUARY 15, 2020
DATE

received
4/15/20 RC



Department of Commerce and Consumer Affairs

CERTIFICATE OF GOOD STANDING

I, the undersigned Director of Commerce and Consumer Affairs of the State of Hawaii, do hereby certify that

HAWAII PUBLIC HEALTH ASSOCIATION

was incorporated under the laws of Hawaii on 07/28/2000 ; that it is an existing nonprofit corporation; and that, as far as the records of this Department reveal, has complied with all of the provisions of the Hawaii Nonprofit Corporations Act, regulating domestic nonprofit corporations.

IN WITNESS WHEREOF, I have hereunto set my hand and affixed the seal of the Department of Commerce and Consumer Affairs, at Honolulu, Hawaii.

Dated: January 12, 2020

Director of Commerce and Consumer Affairs



**DECLARATION STATEMENT OF
APPLICANTS FOR GRANTS PURSUANT TO
CHAPTER 42F, HAWAII REVISIED STATUTES**

The undersigned authorized representative of the applicant certifies the following:

- 1) The applicant meets and will comply with all of the following standards for the award of grants pursuant to Section 42F-103, Hawaii Revised Statutes:
 - a) Is licensed or accredited, in accordance with federal, state, or county statutes, rules, or ordinances, to conduct the activities or provide the services for which a grant is awarded;
 - b) Complies with all applicable federal and state laws prohibiting discrimination against any person on the basis of race, color, national origin, religion, creed, sex, age, sexual orientation, or disability;
 - c) Agrees not to use state funds for entertainment or lobbying activities; and
 - d) Allows the state agency to which funds for the grant were appropriated for expenditure, legislative committees and their staff, and the auditor full access to their records, reports, files, and other related documents and information for purposes of monitoring, measuring the effectiveness, and ensuring the proper expenditure of the grant.

- 2) If the applicant is an organization, the applicant meets the following requirements pursuant to Section 42F-103, Hawaii Revised Statutes:
 - a) Is incorporated under the laws of the State; and
 - b) Has bylaws or policies that describe the manner in which the activities or services for which a grant is awarded shall be conducted or provided.

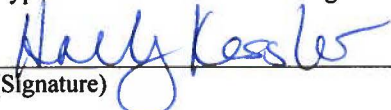
- 3) If the applicant is a non-profit organization, it meets the following requirements pursuant to Section 42F-103, Hawaii Revised Statutes:
 - a) Is determined and designated to be a non-profit organization by the Internal Revenue Service; and
 - b) Has a governing board whose members have no material conflict of interest and serve without compensation.

Pursuant to Section 42F-103, Hawaii Revised Statutes, for grants used for the acquisition of land, when the organization discontinues the activities or services on the land acquired for which the grant was awarded and disposes of the land in fee simple or by lease, the organization shall negotiate with the expending agency for a lump sum or installment repayment to the State of the amount of the grant used for the acquisition of the land.

Further, the undersigned authorized representative certifies that this statement is true and correct to the best of the applicant's knowledge.

Hawaii Public Health Association

(Typed Name of Individual or Organization)



(Signature)

January 15, 2020
(Date)

Holly Kessler
(Typed Name)

Executive Director
(Title)

Application for Grants

If any item is not applicable to the request, the applicant should enter "not applicable".

I. Certification – Please attach immediately after cover page

1. Certificate of Good Standing (If the Applicant is an Organization)

If the applicant is an organization, the applicant shall submit one (1) copy of a certificate of good standing from the Director of Commerce and Consumer Affairs that is dated no earlier than December 1, 2019.

Attached

2. Declaration Statement

The applicant shall submit a declaration statement affirming its compliance with Section 42F-103, Hawaii Revised Statutes. ([Link](#))

Attached

3. Public Purpose

The applicant shall specify whether the grant will be used for a public purpose pursuant to Section 42F-102, Hawaii Revised Statutes. ([Link](#))

Attached

II. Background and Summary

This section shall clearly and concisely summarize and highlight the contents of the request in such a way as to provide the State Legislature with a broad understanding of the request. Please include the following:

1. A brief description of the applicant's background;

The Hawaii Public Health Association (HPHA) was founded 75 years ago in 1945. We are the Hawaii affiliate of the American Public Health Association (APHA). Our mission is to promote public health in Hawaii through leadership, collaboration, education and advocacy. As the largest public health professional association in Hawaii, HPHA strives to link Hawaii and Pacific Island communities with the belief that health is achieved through the prevention of disease and the promotion of well-being with optimal physical, psychological, economic, and social environments and the strong interrelationship between health and the quality of life. We are especially concerned with the large health

disparities that exist among Native Hawaiians and other Pacific Islanders, and since 2002 HPHA has demonstrated strong leadership by hosting the Pacific Global Health Conference, a conference dedicated to health issues in Hawaii and other Pacific Island Countries and Territories, and particularly the U.S. associated Pacific Islands. This effort has raised HPHA's visibility among many national and regional partners. HPHA currently serves as the primary voice of public health professionals in Hawaii.

HPHA Public Health Workforce Development Series and Professional Services Funding Request

HPHA is requesting GIA funds to sustain our professional services and increase public health workforce development opportunities to public health workers in the State of Hawaii by offering regular, accessible continuing education programming to improve the work capacity and skill-building of over 3,000 workers of public health statewide.

HPHA will collaborate with key public health organizations, including the State of Hawaii Department of Health, academic professional training partners and other public health entities to offer regular and accessible continuing education program opportunities to all public health workers in the state.

2. The goals and objectives related to the request;

Need for the project. In 2013, Hawaii was one of only two states in the nation that worked in collaboration to conduct a statewide community health assessment. 26 of the state's 28 hospitals participated in the study. Nearly every single hospital in the state took part in a nine-month study to identify Hawaii's top health issues.

For the first time ever, officials say the state has a clear and comprehensive picture of Hawaii's biggest health concerns: heart failure and bacterial pneumonia are among the top three health issues in Hawaii, but officials say the number one concern is mental health. Mental health is integral to overall health and well-being and should be treated with the same urgency as physical health, according to the CDC. Treatment for mental disorders is available and effective. However, the majority of persons with diagnosed mental disorders do not receive treatment. The challenges for public health are to identify risk factors, increase awareness about mental disorders and the effectiveness of treatment, remove the stigma associated with receiving treatment, eliminate health disparities, and improve access to mental health services for all persons, particularly among populations that are disproportionately affected.

Because of the geographical isolation of Hawaii, and the myriad health and public health challenges it faces, it is crucial that Hawaii have a well-trained and responsive public health workforce.

By providing learning opportunities in the form of continuing education as well as valuable time for networking to establish professional collaborations and share information, the **HPHA Public Health Workforce Development Series and Professional Services** will accomplish the following goals:

Project Goals

- Increase awareness of training programs and opportunities for coordinated and accessible regular public health workforce development.
- Offer continuing education credits to the public health workforce in Hawaii.
- Increase the knowledge and skills and abilities of public health professionals throughout Hawaii.
- Increase participants' knowledge and utilization of evidence-based public health programs that are culturally relevant and resources that are appropriate for Hawaii's unique populations and issues.
- Increase connections and networks between public health workers in order to facilitate professional collaboration.

Objectives

HPHA proposes the following objectives in FY 2020-21 with the GIA funding:

1. Establish a regular series of educational offerings (four minimum per year) to address identified core public health training and educational needs of Hawaii's public health workforce.
2. Work with academic partners and key national organizations to develop continuing education credits and certificates of completion to attendees.
3. Support and develop opportunities for the public health workforce to collaborate on professional development issues.

Benefits for the underprivileged: Hawaii residents enjoy clean air and water, an agreeable climate, and the longest life expectancy than residents of any other state in the union. Despite this enviable status and environmental advantages, health indicators for low income, uneducated and underserved populations continue to linger far below the middle and upper class as the economic recession has exacerbated their ability to access care, and for the government to provide much needed services.

At the forefront of the challenge to improve the health status of residents is the ethnic and cultural diversity of the islands. The indigenous Native Hawaiians have some of the poorest risk factors and health outcomes of any other ethnic group. They face significant disparities in areas such as lifespan, diabetes, cardiovascular disease, and mental health. 11.4% of Native Hawaiians have diabetes mellitus, compared to 9.1% of Japanese and 4.7% of whites. In 2007, 43.2% of Native Hawaiians were obese, and 30.7% were overweight, compared

to 13.5% of Japanese and 19.4% of whites being obese, and 35.6% of Japanese and 36.2% of whites being overweight.

Additionally, immigrants from Southeast Asia and the Pacific Islands continue to flow into the state from impoverished countries that have inadequate medical services and little or no concept of preventative care. The large influx in recent years of Micronesians alone has created a strain on local health systems and dissension among decision makers as to how to manage the increasing expense of their healthcare.

Many current and previous efforts to address these disparities have focused on individual lifestyle change and genetic vulnerabilities. However, the determinants of health are far more complex and wide ranging than personal choice and genetics. For many underserved populations in Hawaii, poverty, limited educational, employment, and housing opportunities, a degraded environment and discrimination sharply delineate the opportunities for exercising healthy choices. Therefore, the imminent need for the public health workforce to be knowledgeable and at the forefront of public health issues is imperative. The **HPHA Public Health Workforce Development Series** will address many topics such as health inequities against the framework of social determinants, and also the challenges and opportunities of utilizing new communication and training technologies in the public health arena.

3. The public purpose and need to be served;

Public health education. The **HPHA Public Health Workforce Development Series** will bring together public health organizations and individuals to increase their knowledge and skills. Education and information on the latest research and evidence-based methods in the field of public health will be provided to participants. Potential topics include:

- **Public health workforce development:** This topic would highlight collaborative education and training programs that strengthen the competence and capacity of the current and future public health workforce in Hawaii. Programs that enhance the quality of public health services, especially for underserved areas and populations could be featured. Core competencies in public health work will be highlighted, since these are critical to the capacity of public health workers in carrying out their functions successfully. These include critical thinking, evidence-based data capacity.
- **Health and Culture:** This topic would address the relationship between health and culture, especially health and wellness among Native Hawaiians, Pacific Islanders and other indigenous populations. Potential topics could include social determinants of health, community based participatory research and programs which promote culture to support and improve health. Innovative and collaborative work would be prioritized.

- **Health, Communication and Education:** The purpose of this topic would be to share knowledge that would influence the use of effective health communications and education strategies in Hawaii and elsewhere, including new ideas about the use of internet and communication technologies in addition to the effective use of long-standing health communication and education methods.
- **Policy and advocacy:** While much of the focus of our health care “systems” continues to be on the important arena of how to help and support individual behavior change that results in the better health, most improvements in life expectancy and other key markers of healthy populations today are the result of effective population-based public health programs. This program would focus on current policy and advocacy efforts addressing the key health issues facing Hawaii today. Subtopics could address such key issues as cost, effectiveness, degree of difficulty, components and features of an effective approach to non-communicable diseases, policy and law, and work that addresses population-based policies that seek to improve health in a socially-just manner.

4. Describe the target population to be served;

HPHA is the oldest and largest professional public health organization in Hawaii, and its membership consists of over 500 public health professionals in Hawaii, the Pacific and beyond. It is very important for the workforce development of this sector to keep up to date on population health needs and developments, since in Hawaii alone, over 1.2 million people reside, and over 7 million people visit or immigrate annually. Trainings will be available to all public health workers, membership in HPHA is not a requirement.

The target population proposed to be served by the **HPHA Public Health Workforce Development Series** includes public health workers statewide, practitioners in public health, medicine, nursing, and other related health professions, the state departments and programs with public health-related services, policymakers as well as health related academics, and students in the public and private sectors. The general public is the ultimate beneficiary of a well-trained and supported workforce that possesses optimal skills and abilities in public health.

5. Describe the geographic coverage.

The geographic coverage is the entire State of Hawaii, including neighbor islands and rural communities, since workforce development is more problematic in non-urban areas of the state.

III. Service Summary and Outcomes

The Service Summary shall include a detailed discussion of the applicant’s approach to the request. The applicant shall clearly and concisely specify the results, outcomes, and measures of effectiveness from this request. The applicant shall:

1. Describe the scope of work, tasks and responsibilities;

The scope of this project is to hold continuing educational series and workforce development activities for the public health workforce in the State of Hawaii. The HPHA Board of Directors, the Planning Committee and Executive Director will oversee the project activities.

The HPHA Executive Director & CE Coordinator will be responsible for administrative tasks such as finalizing speakers, securing conference space and services, marketing of the education series, and overseeing the deliverables with Committee.

The scope of work and project timeline is outlined below.

2. Provide a projected annual timeline for accomplishing the results or outcomes of the service;

	Jun '20	Jul '20	Aug '20	Sep '20	Oct '20	Nov '20	Dec '20	Jan '21	Feb '21	Mar '21	Apr '21	May '21
Develop Advisory Committee	X	X										
Workforce needs assessment	X	X	X									
Identify core skills		X	X									
Apply for CME and CEU approval			X	X								
Secure speakers		X	X	X	X							
Marketing/Public Relations		X	X		X	X		X	X		X	X
Program Implementation			X			X			X			X
Program Evaluation											X	X

3. Describe its quality assurance and evaluation plans for the request. Specify how the applicant plans to monitor, evaluate, and improve their results;

The HPHA Board of Directors, Planning Committee and the Executive Director will work to develop and submit a comprehensive evaluation report to the Hawaii Department of Health and Hawaii State Legislature at the conclusion of the GIA funding period. Formative evaluation will be an ongoing process throughout the project cycle to examine the planning and implementation process. Summative evaluation will examine whether the goals and objectives were met and will quantify registrants, presentations and topics. Key knowledge sharing areas, professional networking, and strategies to address current and future public health issues will be summarize and analyzed. The summative evaluation will: (1) identify planning, implementation, and evaluation processes that produced

measurable outcomes, (2) examine the effectiveness of the trainings and (3) identify the mix of CE participants and knowledge generated.

4. List the measure(s) of effectiveness that will be reported to the State agency through which grant funds are appropriated (the expending agency). The measure(s) will provide a standard and objective way for the State to assess the program's achievement or accomplishment. Please note that if the level of appropriation differs from the amount included in this application that the measure(s) of effectiveness will need to be updated and transmitted to the expending agency.

HPHA will determine success of this project through the following:

The list of measures of effectiveness that will be reported to the Hawaii Department of Health are identified above (see #3). The summative evaluation will:

- Identify planning, implementation, and evaluation processes that produce measurable outcomes.
- Examine the effectiveness of the trainings and identify the mix of participants and knowledge generated.
- Successful completion of the milestones detailed in the section above, in the timeframe specified.
- Positive satisfaction scores on the trainings.
- Positive scores on conference participants' learning objectives.

IV. Financial

Budget

1. The applicant shall submit a budget utilizing the enclosed budget forms as applicable, to detail the cost of the request.
 - a. Budget request by source of funds ([Link](#))
 - b. Personnel salaries and wages ([Link](#))
 - c. Equipment and motor vehicles ([Link](#))
 - d. Capital project details ([Link](#))
 - e. Government contracts, grants, and grants in aid ([Link](#))

ATTACHED

2. The applicant shall provide its anticipated quarterly funding requests for the fiscal year 2021.

Quarter 1	Quarter 2	Quarter 3	Quarter 4	Total Grant
\$15,000	\$5,000	\$5,000	\$4,000	\$29,000

3. The applicant shall provide a listing of all other sources of funding that they are seeking for fiscal year 2021.

At this time, there are no identified other sources for funding except for in-kind support such as professional and student volunteers on the Planning Committee. HPHA will be exploring options to sustain these activities beyond the 2020-2021 fiscal period.

4. The applicant shall provide a listing of all state and federal tax credits it has been granted within the prior three years. Additionally, the applicant shall provide a listing of all state and federal tax credits they have applied for or anticipate applying for pertaining to any capital project, if applicable.

N/A

5. The applicant shall provide a listing of all federal, state, and county government contracts, grants, and grants in aid it has been granted within the prior three years and will be receiving for fiscal year 2021 for program funding.

N/A

6. The applicant shall provide the balance of its unrestricted current assets as of December 31, 2019.

Attached

V. Experience and Capability

1. Necessary Skills and Experience

The applicant shall demonstrate that it has the necessary skills, abilities, knowledge of, and experience relating to the request. State your experience and appropriateness for providing the service proposed in this application. The applicant shall also provide a listing of verifiable experience of related projects or contracts for the most recent three years that are pertinent to the request.

The Hawaii Public Health Association (HPHA) Board of Directors has coordinated large scale meetings, conferences and trainings since its inception in 1945. In particular, since 2002, it has been the lead partner on the Pacific Global Health Conference in Honolulu, and has collaborated with numerous public and private sector organizations on this effort, including:

- University of Hawaii Office of Public Health Studies US Centers for Disease Control & Prevention
- University of Hawaii John A. Burns School of Medicine
- US Health Research and Services Administration (HRSA)-DHHS

- University of Hawaii Cancer Center
- Pacific Research and Learning Association (PREL)
- Hawaii State Department of Health – divisions, offices and programs
- Hawaii Primary Care Association (HPCA)
- Pacific Islands Health Officers Association (PIHOA)
- Pacific Islands Primary Care Association (PiPCA)
- PATH (a bicycle and pedestrian advocacy organization)
- Hawaii Medical Reserve Corps
- Hawaii Initiative for Childhood Obesity Research and Education (HICORE)

2. Facilities

The applicant shall provide a description of its facilities and demonstrate its adequacy in relation to the request. If facilities are not presently available, describe plans to secure facilities.

Facilities for the **HPHA Workforce Development Series** are anticipated to be offered online for optimal access and may be held at one or more of the following locations: The Queen’s Conference Center, University of Hawaii Cancer Center, University of Hawaii-Manoa. Other locations may be utilized but have not been identified at this time. All of the facilities will be ADA accessible.

VI. Personnel: Project Organization and Staffing

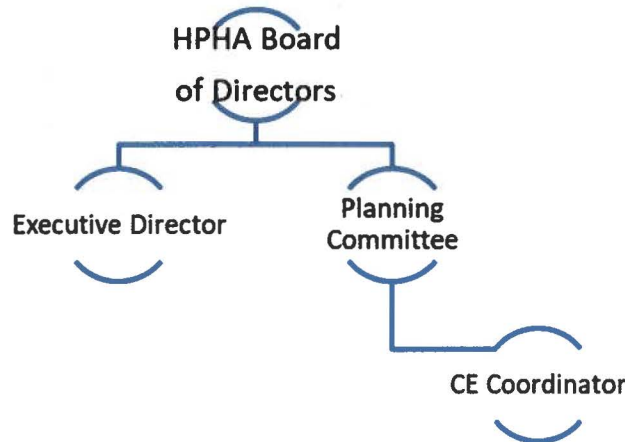
1. Proposed Staffing, Staff Qualifications, Supervision and Training

The applicant shall describe the proposed staffing pattern and proposed service capacity appropriate for the viability of the request. The applicant shall provide the qualifications and experience of personnel for the request and shall describe its ability to supervise, train and provide administrative direction relative to the request.

The HPHA Planning Committee and the Executive Director will play central roles in the assessment, planning, implementation, and evaluation of the trainings. This will assure there is consistent administrative oversight of the funded project such as contracting conference space and services, conference marketing and evaluation, and management of the budget. The Executive Director will report to the HPHA Board for oversight on the progress of the project. The CE Coordinator will assist with program administration and oversee the tasks related to continuing education matters, such as CE credits application and the coordination of all activities related to the approval process.

2. Organization Chart

The applicant shall illustrate the position of each staff and line of responsibility/ supervision. If the request is part of a large, multi-purpose organization, include an organization chart that illustrates the placement of this request.



3. Compensation

The applicant shall provide an annual salary range paid by the applicant to the three highest paid officers, directors, or employees of the organization by position title, not employee name.

Personnel	Annual Salary
Executive Director (PT)	\$30,000
CE Coordinator (PT)	\$15,000

VII. Other

1. Litigation

The applicant shall disclose any pending litigation to which they are a party, including the disclosure of any outstanding judgement. If applicable, please explain.

N/A

2. Licensure or Accreditation

The applicant shall specify any special qualifications, including but not limited to licensure or accreditation that the applicant possesses relevant to this request.

N/A

3. Private Educational Institutions

The applicant shall specify whether the grant will be used to support or benefit a sectarian or non-sectarian private educational institution. Please see [Article X, Section 1, of the State Constitution](#) for the relevance of this question.

N/A

4. Future Sustainability Plan

The applicant shall provide a plan for sustaining after fiscal year 2020-21 the activity funded by the grant if the grant of this application is:

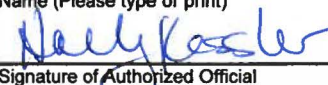
- (a) Received by the applicant for fiscal year 2020-21, but
- (b) Not received by the applicant thereafter.

HPHA will use GIA funds if received in fiscal year 2020-21 to support the organization's over 500 members and public health workers, for continuing education and supporting CE's to sustain the public health workforce in the State of Hawaii. After fiscal year 2020-21, HPHA will continue to support our membership and their continuing education goals; however, if no further funding is received for this purpose in 2022, it will be unlikely that continuing education and workforce development statewide can be supported.

BUDGET REQUEST BY SOURCE OF FUNDS

Period: July 1, 2020 to June 30, 2021

Applicant: Hawaii Public Health Association

BUDGET CATEGORIES	Total State Funds Requested (a)	Total Federal Funds Requested (b)	Total County Funds Requested (c)	Total Private/Other Funds Requested (d)
A. PERSONNEL COST				
1. Salaries	25,000			
2. Payroll Taxes & Assessments				
3. Fringe Benefits				
TOTAL PERSONNEL COST	25,000			
B. OTHER CURRENT EXPENSES				
1. Airfare, Inter-Island	3,000			
2. Insurance				
3. Lease/Rental of Equipment				
4. Lease/Rental of Space				
5. Staff Training				
6. Supplies	1,000			
7. Telecommunication				
8. Utilities				
9				
10				
11				
12				
13				
14				
15				
16				
17				
18				
19				
20				
TOTAL OTHER CURRENT EXPENSES	4,000			
C. EQUIPMENT PURCHASES				
D. MOTOR VEHICLE PURCHASES				
E. CAPITAL				
TOTAL (A+B+C+D+E)	29,000			
SOURCES OF FUNDING		Budget Prepared By:		
(a) Total State Funds Requested	29,000	Holly Kessler	503-908-4742	
(b) Total Federal Funds Requested		Name (Please type or print)	Phone	
(c) Total County Funds Requested			Jan. 15, 2020	
(d) Total Private/Other Funds Requested		Signature of Authorized Official	Date	
TOTAL BUDGET	29,000	Holly Kessler, Executive Director		
		Name and Title (Please type or print)		

BUDGET JUSTIFICATION - PERSONNEL SALARIES AND WAGES

Period: July 1, 2020 to June 30, 2021

Applicant: Hawaii Public Health Association

POSITION TITLE	FULL TIME EQUIVALENT	ANNUAL SALARY A	% OF TIME ALLOCATED TO GRANT REQUEST B	TOTAL STATE FUNDS REQUESTED (A x B)
Executive Director	0.5	\$30,000.00	33.33%	\$ 10,000
CE Coordinator	0.5	\$15,000.00	100.00%	\$ 15,000
				\$ -
				\$ -
				\$ -
				\$ -
				\$ -
				\$ -
				\$ -
				\$ -
				\$ -
				\$ -
				\$ -
				\$ -
				\$ -
TOTAL:				25,000
JUSTIFICATION/COMMENTS:				

BUDGET JUSTIFICATION - EQUIPMENT AND MOTOR VEHICLES

Period: July 1, 2020 to June 30, 2021

Applicant: Hawaii Public Health Association

DESCRIPTION EQUIPMENT	NO. OF ITEMS	COST PER ITEM	TOTAL COST	TOTAL BUDGETED
None			\$ -	0
			\$ -	0
			\$ -	0
			\$ -	0
			\$ -	0
TOTAL:				0
JUSTIFICATION/COMMENTS:				

DESCRIPTION OF MOTOR VEHICLE	NO. OF VEHICLES	COST PER VEHICLE	TOTAL COST	TOTAL BUDGETED
None			\$ -	0
			\$ -	0
			\$ -	0
			\$ -	0
			\$ -	0
TOTAL:				0
JUSTIFICATION/COMMENTS:				

BUDGET JUSTIFICATION - CAPITAL PROJECT DETAILS

Period: July 1, 2020 to June 30, 2021

Applicant: Hawaii Public Health Association

FUNDING AMOUNT REQUESTED						
TOTAL PROJECT COST	ALL SOURCES OF FUNDS RECEIVED IN PRIOR YEARS		STATE FUNDS REQUESTED	OF FUNDS REQUESTED	FUNDING REQUIRED IN SUCCEEDING YEARS	
	FY: 2018-2019	FY: 2019-2020	FY:2020-2021	FY:2020-2021	FY:2021-2022	FY:2022-2023
PLANS	0	0	0	0	0	0
LAND ACQUISITION	0	0	0	0	0	0
DESIGN	0	0	0	0	0	0
CONSTRUCTION	0	0	0	0	0	0
EQUIPMENT	0	0	0	0	0	0
TOTAL:	0	0	0	0	0	0
JUSTIFICATION/COMMENTS:						

GOVERNMENT CONTRACTS, GRANTS, AND / OR GRANTS IN AID

Applicant: Hawaii Public Health Association

Contracts Total: -

	CONTRACT DESCRIPTION	EFFECTIVE DATES	AGENCY	GOVERNMENT ENTITY (U.S. / State / Haw / Hon / Kau / Mau)	CONTRACT VALUE
1	NONE				-
2					
3					
4					
5					
6					
7					
8					
9					
10					
11					
12					
13					
14					
15					
16					
17					
18					
19					
20					
21					
22					
23					
24					
25					
26					
27					
28					
29					
30					

01/01/20

Hawaii Public Health Association

Balance Sheet

As of December 31, 2019

	<u>Dec 31, 19</u>
ASSETS	
Current Assets	
Checking/Savings	
First Hawaiian Bank	32,383.79
Total Checking/Savings	<u>32,383.79</u>
Total Current Assets	<u>32,383.79</u>
TOTAL ASSETS	<u><u>32,383.79</u></u>
LIABILITIES & EQUITY	
Equity	
Retained Earnings	-18,819.77
Unrestricted Net Assets	52,260.78
Net Income	<u>-1,057.22</u>
Total Equity	<u>32,383.79</u>
TOTAL LIABILITIES & EQUITY	<u><u>32,383.79</u></u>