

Hawaii Department of Agriculture

Hawaii Interagency Biosecurity Plan January 2019 Progress Update



Primary Biosecurity Roles

- Preborder policies to prevent invasives from arriving in Hawaii
- Border inspection and quarantine
- Postborder response to agricultural pests
- Biological control



HDOA HIBP Actions



Highlights:

- PQSystem17 electronic-manifesting and permitting technology
- Increased number of filled inspector positions
- Transitional facility pilot project
- Detector dog program restored
- Funds provided for biocontrol facility planning

Remaining Needs:

- Import risk specialists (4 requested in 2019)
- Detector dog kennel & training facility
- Additional positions at PQ, PPC, AI

PQSYSTEM17 – Database Replacement

- HDOA entered into a contract with Pacific Point to create a database to **replace** the current Invicta system.
- System is **comprehensive** and incorporates all PQB data collection functions into two phases:

➤ Phase 1

- E-Manifest
- Permitting

➤ Phase 2

- Import Inspections
- Investigations
- Inter-Island Inspections
- Export Inspections
- Pest Hotline
- Certified Nursery
- Phytosanitary Certification



PQSYSTEM17 – Database Replacement

- **System includes additional functionality for the public to:**
 - Pay online and via credit card
 - Submit permit applications online, including requests for inspections and other PQB functions
 - Track permit processing
- **System will provide additional tools for PQB to:**
 - Conduct up-to-date risk analysis of regulated commodities
 - Increase efficiency by entering data in real time via mobile device or E - Manifest
 - Optimize staffing to target commodities of higher or unknown risk
 - Standardize workflows and data entry/storage





Compliance Agreements

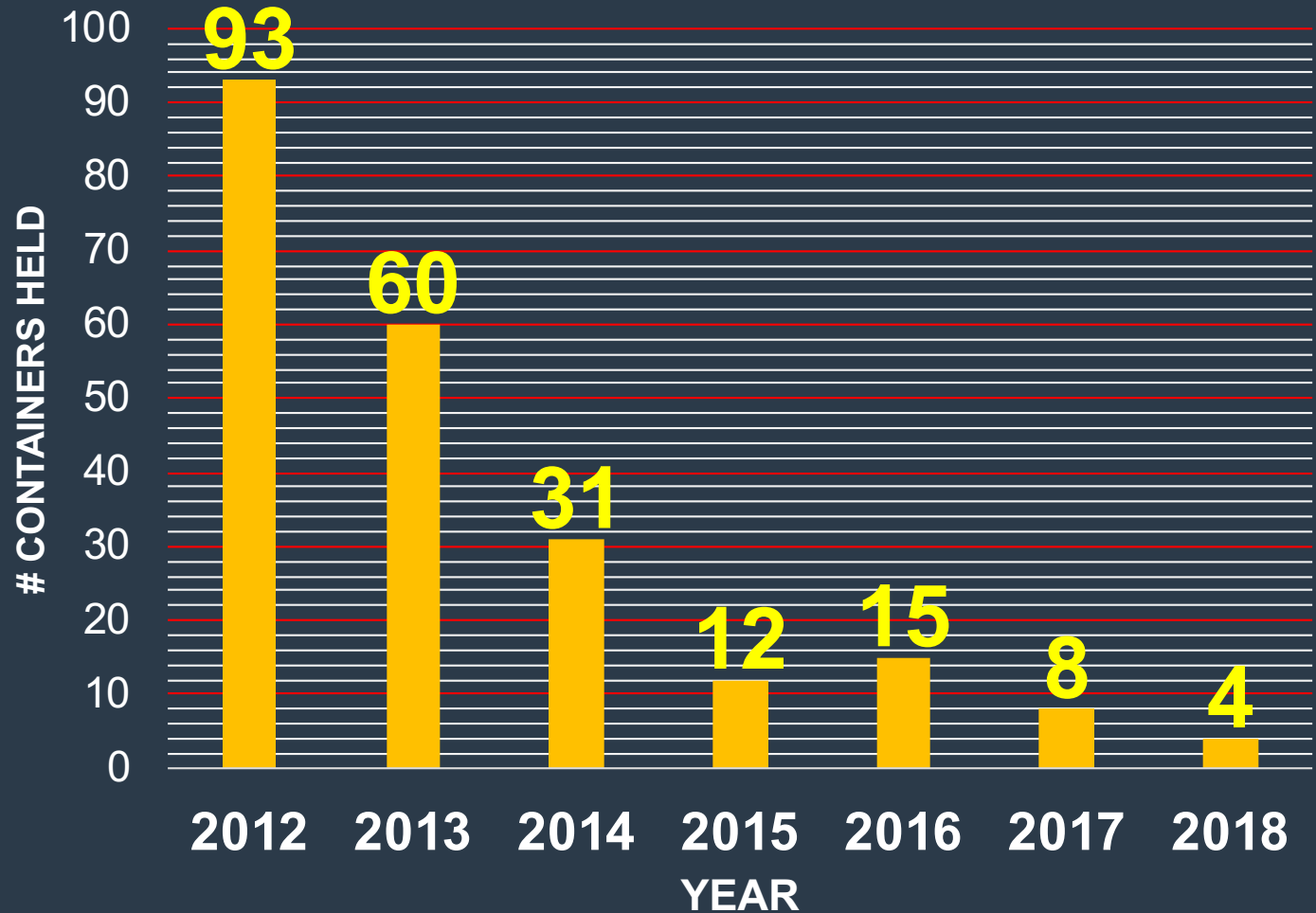
Prior to 2012, no compliance agreements with states shipping Christmas trees to Hawaii.

Compliance Agreements

Since 2013, HDOA has worked directly with Oregon and Washington Agriculture Officials to reduce pest levels on Christmas trees.

RESULT: Drastic decrease in shipments quarantined due to pest interceptions.

Christmas Tree Inspection Results 2012-2018



Transitional Facilities

- The term “Transitional Facilities” is used to describe **public or privately owned facilities** that meet specific **physical design requirements** and adhere to **procedures that mitigate pest introduction and spread** in the State.
- These facilities can be located at the port of entry, or utilize a privately owned facility away from the port.
- There are currently **8 participants** in the program.

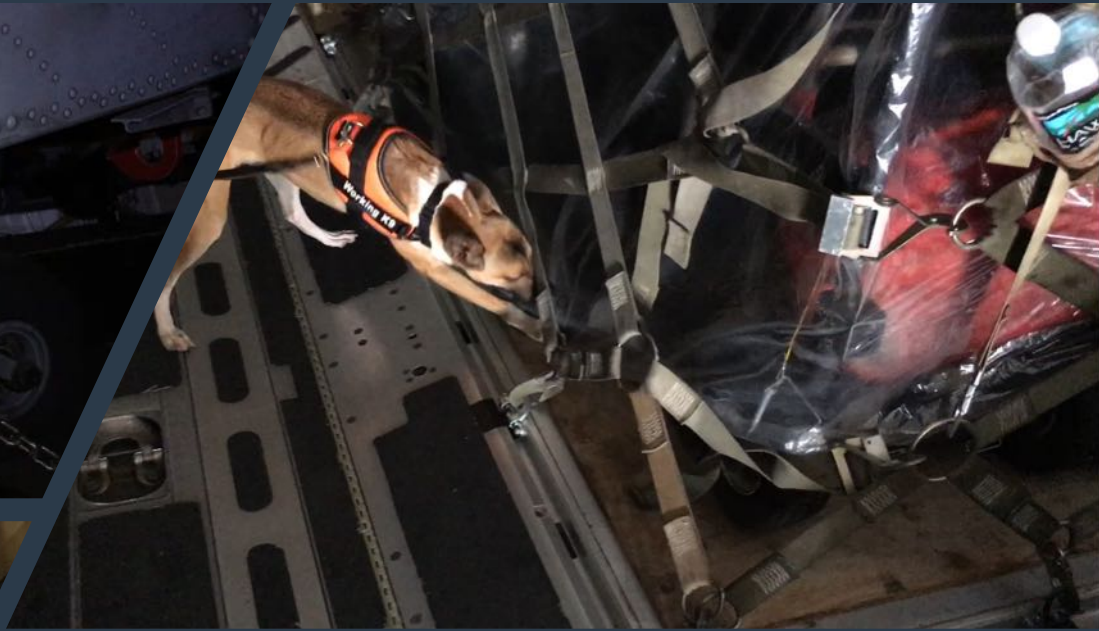


Transitional Facilities have features such as: **adequate space** for inspection, **containment** mechanisms, **refrigeration**, and dedicated **inspection areas**.

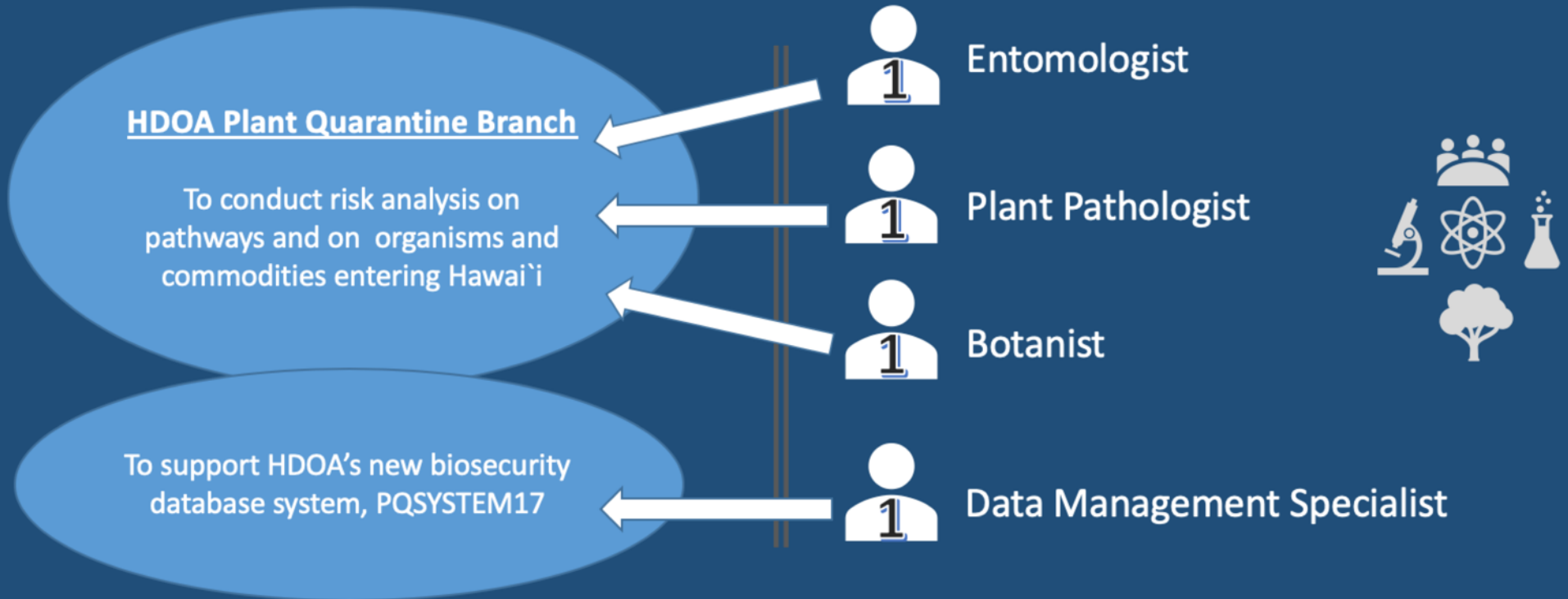
Hawaii Detector Dog Program

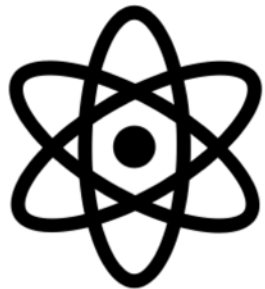
- Four positions filled in 2016.
- Payroll for handlers funded by HDOA. Training, supplies, equipment currently funded by a U.S. Department of the Interior grant.
- Primary focus is for **Brown Tree Snake** interdiction.





Budget requests for Legislative Session 2019 Regarding Pre-border Biosecurity





New Biocontrol Facility

Legislative Session 2018 approved \$180,000 for planning funds to build a new office complex to house the Plant Pest Control Branch, which will include new biocontrol program facilities and chemical/mechanical pest control facilities.



New Biocontrol Facility

The new campus will include:

- Containment facilities sufficient to run 10 parallel biocontrol projects at one time
- Diagnostic laboratories
- Molecular diagnostic laboratories,
- Insectaries
- Pathogen-rearing facilities, Greenhouses
- Office space
- Chemical and pesticide storage
- Meeting spaces
- Reference collection (insect, disease, plant and literature)

