



EXECUTIVE CHAMBERS  
HONOLULU

DAVID Y. IGE  
GOVERNOR

Testimony of **Ford Fuchigami**  
Administrative Director, Office of the Governor

Before the Joint House Committees of  
**Public Safety, Intergovernmental, and Military Affairs**  
**Water, Land, & Hawaiian Affairs**  
**Housing**  
**Human Services & Homelessness**

February 8, 2019  
9:00 a.m., Conference Room 329

In consideration of  
**House Bill No. 1180**  
**RELATING TO NATURAL DISASTERS**

Chairs Takayama, Yamane, Brower, and Buenaventura and committee members:

Thank you for the opportunity to provide testimony in support of HB 1180 Relating to Natural Disasters which appropriates funds to the County of Hawai'i for disaster relief.

We appreciate your attention and will be available to answer your questions, should you have any at this time.

STATE OF HAWAII  
DEPARTMENT OF DEFENSE  
HAWAII EMERGENCY MANAGEMENT AGENCY

TESTIMONY ON  
**HOUSE BILL 1180, RELATING TO NATURAL DISASTERS**

Before the House Committees on  
**PUBLIC SAFETY, VETERANS & MILITARY AFFAIRS**  
**WATER, LAND & HAWAIIAN AFFAIRS**  
**HOUSING AND**  
**HUMAN SERVICES & HOMELESSNESS**

by

THOMAS L. TRAVIS  
Administrator, Hawaii Emergency Management Agency (HI-EMA)

Aloha Chairs and Vice-Chairs, and Members of the Committee:

The Hawaii Emergency Management Agency (HI-EMA) **supports** House Bill 1180.

House Bill 1180 Appropriates funds for disaster relief, recovery, mitigation, and remediation activities for the county of Hawai'i.

The unprecedented volcanic eruptions on the island of Hawaii from May 3, 2018 to August 14, 2018 destroyed hundreds of homes, communities, businesses, farms, schools, cultural sites, water systems, electrical grid, and roadways.

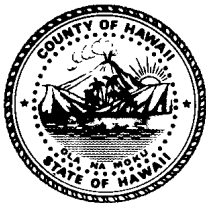
The Hawaii Emergency Management Agency deployed several personnel to assist the Hawaii County during the Kilauea eruption and continues to provide support to the long-term recovery and hazard mitigation efforts.

Note: My comments represent HI-EMA concerns at the state emergency management level only. I would defer to the separate comment/testimonies of the county emergency management agencies, as they would be the jurisdictions impacted by this legislation at the local level.

Thank you for the opportunity to provide testimony on House Bill 1180.

Thomas L. Travis: [Thomas.L.Travis@hawaii.gov](mailto:Thomas.L.Travis@hawaii.gov); 808-733-4300

Harry Kim  
Mayor



Diane L. Ley  
Director

Ron Whitmore  
Deputy Director

## County of Hawai'i

### DEPARTMENT OF RESEARCH AND DEVELOPMENT

25 Aupuni Street, Room 1301 • Hilo, Hawai'i 96720-4252  
(808) 961-8366 • Fax (808) 935-1205  
E-mail: chresdev@hawaiicounty.gov

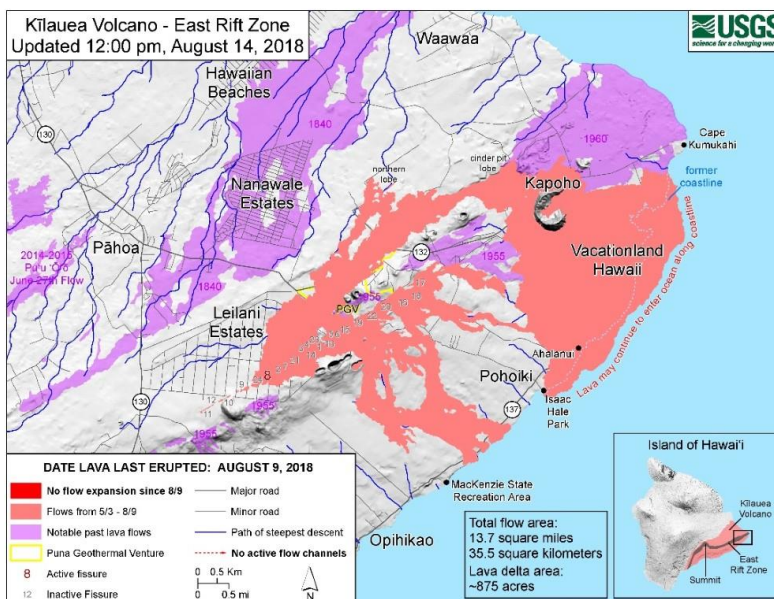
### TESTIMONY OF DIANE LEY, KĪLAUEA RECOVERY MANAGER & COUNTY OF HAWAII DEPARTMENT OF RESEARCH & DEVELOPMENT DIRECTOR

#### HB1180 RELATING TO NATURAL DISASTERS

Honorable Chairpersons Takayama, Yamane, San Buenaventura & Brower & Committee Members,

Thank you for the opportunity to provide supportive testimony for HB1180, relating to natural disasters. The passage of this bill will significantly assist families, businesses and communities in recovering from an estimated \$800 million in impacts from the recent eruption of Kīlauea by providing resources to assure housing assistance programs will be in place to support impacted households and federally required local match is available for critical infrastructure replacement. State personnel and leadership were present from start of the eruption providing the County of Hawai'i with significant support over the course of 100+ days, and the Governor provided financial support for both response and to kick-start the recovery process. **Now the County is requesting the Legislature's financial support in assuring families, businesses and communities can start the process to recover and rebuild in a safer, healthier and more resilient manner.**

The Kīlauea eruption began on May 3, 2018, in the lower East Rift Zone in the Puna district on the island of Hawai'i, 24 fissures opened and poured forth massive volumes of lava resulting in more than 6,000 acres of land covered with lava. More than 700 homes were lost, and more than 50 homes remain isolated, and some 1,600 acres of agricultural lands were covered or isolated.



In addition to lava flows and subsequent fires, hazards such as volcanic gas, vog, ash fall, acid rain, laze, ballistic projectiles, and earthquakes posed risks to people and property. Significant disruption of small businesses, farms and the visitor sector island-wide was experienced and continues to date, with tourism revenue alone estimated to have lost in excess of \$200 million.

The County initiated recovery steps while response was on-going; however, experts project that full recovery will take 5-10 years due to the significant disruption of lives and the economy, and the destruction of the environment. Recovery is complex and must address immediate needs while giving due consideration to future risks, community planning and the response capacity of families, businesses, communities and all levels of government. Thoughtful and comprehensive dialogue, planning and implementation are key to a full recovery that results in a healthier and more resilient communities.

**Of immediate concern is November 2019** will mark the end of the Federal Emergency Management Agency's (FEMA) Individual Assistance program and the associated federal rental and lease subsidies for displaced families; thus, it will be critical for a local safety net to be in place. The County is taking steps to ready a range of housing assistance programs – from continued rental assistance via additional Section 8 Vouchers and/or the re-establishment of a rental rehabilitation program; to expedited home and wastewater permitting and a proposed down-payment revolving loan fund; to exploratory efforts to stand up a community land trust and financial literacy program that would expand the capacity of families to secure affordable replacement homes. **The County is asking the Legislature to provide appropriate housing assistance resources to provide continued assistance to the impacted families; thus, empowering their individual successful recoveries and avoid becoming homeless or facing other social challenges.**

The loss of critical infrastructure including primary roads, domestic waterlines and park facilities is estimated to be valued at approximately \$236.5 million. Access roads and water are critical to the successful recovery of communities; however, all must learn from the past and plan for a more resilient future; hence, the County recognizes the need to provide critical information for decision-makers – families, businesses and government – to make informed long-term decisions. The County continues to gather information as to a broad range of federal funding sources and has partnered to prepare a risk assessment, hazard mitigation studies and a financial analysis so that decision-makers will be equipped to assess what public assets and services should be returned to the impacted area or redirected to other areas. Fortunately, FEMA can provide a 75% cost share for replacement of roads, waterlines and public facilities. **The County is asking the Legislature to provide appropriate resources to meet the required 25% local match to replace roads and other public infrastructure.**

The County has been proactive working with partners in planning and implementing short-term, intermediate and long-term recovery efforts. To date FEMA has provided over \$10 million in Individual Assistance directly to impacted households, and the County has secured over \$2.1 million in a mix of federal and private grants to support housing case management, financial literacy and economic recovery planning. Potential future funding includes federal Community Development Block Grant - Disaster Relief and a wide range of disaster assistance programs pending before Congress. At the State level, the Governor, the University of Hawai'i at Manoa and the Hawaii Visitors and Convention Bureau have been responsive in providing resources to assure recovery is moving forward. All of which will go toward recovering from the estimated \$800 million in impacts as a result of the eruption.

**The Legislature's favorable consideration of HB1180 is necessary to support long-term recovery efforts for our families, businesses, and communities and would be sincerely appreciated.**

DAVID Y. IGE  
Governor

JOSH GREEN  
Lt. Governor



PHYLLIS SHIMABUKURO-GEISER  
Acting Chairperson  
Board of Agriculture

State of Hawaii  
**DEPARTMENT OF AGRICULTURE**  
1428 South King Street  
Honolulu, Hawaii 96814-2512  
Phone: (808) 973-9600 FAX: (808) 973-9613

## TESTIMONY OF THE DEPARTMENT OF AGRICULTURE

BEFORE THE HOUSE COMMITTEES ON PUBLIC SAFETY, VETERANS, &  
MILITARY AFFAIRS; WATER, LAND, & HAWAIIAN AFFAIRS; HOUSING; AND  
HUMAN SERVICES & HOMELESSNESS

FEBRUARY 8, 2019  
9:00 A.M.  
CONFERENCE ROOM 329

HOUSE BILL NO. 1180  
RELATING TO NATURAL DISASTERS

Chairpersons Takayama, Yamane, Brower, and San Buenaventura and Members of the  
Committees:

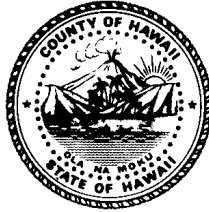
Thank you for the opportunity to testify on House Bill 1180. This bill provides an appropriation to the County of Hawaii to support the disaster relief efforts from the Kilauea eruption. The Department supports this bill and offers comments.

The agricultural industry suffered great losses due to the Kilauea eruption. With nearly \$28 million in losses to the agricultural industry in the County of Hawaii, the State must find ways to support agricultural recovery and revive production on Hawaii Island. The Department supports the efforts of the County of Hawaii in its agricultural recovery from the Kilauea eruption.

Thank you for the opportunity to testify on this measure.



County of Hawai'i  
Council District 9 -  
North and South Kohala



Phone: (808) 961-8564  
(808) 887-2069

Email: [tim.richards@hawaiiicounty.gov](mailto:tim.richards@hawaiiicounty.gov)

**Chair:** Committee on Agriculture,  
Water, Energy, and Environmental  
Management

**Vice Chair:** Committee on Finance

**HERBERT M. "TIM" RICHARDS, III**  
**HAWAI'I COUNTY COUNCIL - DISTRICT 9**  
25 Aupuni Street, Ste. 1402, Hilo, Hawai'i 96720

February 6, 2019

House Committee on Public Safety, Veterans, & Military Affairs  
House Committee on Water, Land, & Hawaiian Affairs  
House Committee on Housing  
House Committee on Human Services & Homelessness

**Submission via online testimony**

RE: **Support of HB 1180**  
Hearing Date/Time: February 8, 2019 at 9:00 a.m.

Dear Committee Representatives:

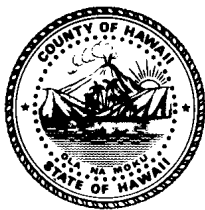
As the Chair of the Committee on Agriculture, Water, Energy, and Environmental Management for the Hawai'i County Council, I thank you for the opportunity to submit **testimony in SUPPORT of HB 1180**. It is critical that funds are appropriated for disaster relief, recovery, mitigation, and remediation activities for the County of Hawai'i.

Please feel free to contact me should you need to discuss my position and knowledge of this matter further.

Sincerely,

HERBERT M. "TIM" RICHARDS, III  
Hawai'i County Council, District 9

*Aaron S. Y. Chung, Chairman  
Hawai'i County Council  
Council Member, District 2*



*Phone No.: (808) 961-8272  
Fax No.: (808) 961-8912  
aaron.chung@hawaiicounty.gov*

## ***HAWAI'I COUNTY COUNCIL***

*County of Hawai'i  
Hawai'i County Building  
25 Aupuni Street  
Hilo, Hawai'i 96720*

### **TESTIMONY OF AARON CHUNG, CHAIRMAN HAWAI'I COUNTY COUNCIL**

**COMMITTEE ON PUBLIC SAFETY, VETERANS, & MILITARY AFFAIRS  
COMMITTEE ON WATER, LAND, & HAWAIIAN AFFAIRS  
COMMITTEE ON HOUSING  
COMMITTEE ON HUMAN SERVICES & HOMELESSNESS**

**HEARING DATE: FRIDAY, FEBRUARY 8, 2019**

### **IN SUPPORT OF HB1180, RELATING TO NATURAL DISASTERS**

Chairs Takayama, Yamane, Brower, and San Buenaventura and Committee Members,

Thank you very much for your consideration of HB1180 which, if enacted, would provide the County of Hawai'i with much needed funds for relief, recovery, mitigation, and remediation from the recent Kilauea eruption disaster. As you know, the event severely affected us on many levels and this bill clearly demonstrates to the residents of our island that their sense of loss has not escaped the attention of our leaders at the state level. Attending your hearing on behalf of the Hawai'i County Council will be councilmembers Ashley Kierkiewicz and Sue Lee Loy, both of whom have been designated by me as the our council's point persons for lava relief efforts, as well councilmember Tim Richards, who heads our Agriculture committee. All of these members are well-informed regarding the issues relating to the disaster and the County of Hawai'i's commitment moving forward.

Again, on behalf of all of the people of the Big Island, it is with a deep sense of gratitude that we thank you for your consideration and support for HB1180.

**VALERIE T. POINDEXTER**

*Council Member  
Chair, Committee on Parks and Recreation  
Council District 1*



Phone: (808) 961-8018  
Fax: (808) 961-8912  
Email: [valerie.poindexter@hawaiicounty.gov](mailto:valerie.poindexter@hawaiicounty.gov)

## HAWAI'I COUNTY COUNCIL

*County of Hawai'i  
Hawai'i County Building  
25 Aupuni Street, Suite 1402  
Hilo, Hawai'i 96720*

February 6, 2019

### Committee on Public Safety, Veterans, and Military Affairs

Representative Gregg Takayama, Chair Email: [reptakayama@capitol.hawaii.gov](mailto:reptakayama@capitol.hawaii.gov)  
Representative Cedric Asuega Gates, Vice Chair Email: [repgates@capitol.hawaii.gov](mailto:repgates@capitol.hawaii.gov)

### Committee on Water, Land, and Hawaiian Affairs

Representative Ryan I. Yamane, Chair Email: [repyamane@capitol.hawaii.gov](mailto:repyamane@capitol.hawaii.gov)  
Representative Chris Todd, Vice Chair Email: [reptodd@capitol.hawaii.gov](mailto:reptodd@capitol.hawaii.gov)

### Committee on Housing

Representative Tom Brower, Chair Email: [repbrower@capitol.hawaii.gov](mailto:repbrower@capitol.hawaii.gov)  
Representative Scot Z. Matayoshi, Vice Chair Email: [repmatayoshi@capitol.hawaii.gov](mailto:repmatayoshi@capitol.hawaii.gov)

### Committee on Human Services and Homelessness

Representative Joy A. San Buenaventura, Chair Email: [repsanbuenaventura@capitol.hawaii.gov](mailto:repsanbuenaventura@capitol.hawaii.gov)  
Representative Nadine K. Nakamura, Vice Chair Email: [repnakamura@capitol.hawaii.gov](mailto:repnakamura@capitol.hawaii.gov)

Subject: Testimony Supporting HB1180, Relating to Natural Disasters  
Hearing: February 8, 2019, 9:00 a.m., Conference Room 329

Dear Chairs and Vice Chairs:

On behalf of myself and the constituents of Council District 1, Hāmākua, County of Hawai'i, I would like to express our support of HB1180, and submit a brief testimony as follows:

This bill appropriates funds for disaster relief, recovery, mitigation, and remediation activities for the county of Hawai'i.

I strongly support and urge the enactment of HB1180. Thank you for your time and consideration.

Sincerely,

Valerie T. Poindexter



**KAPOHO LAND PARTNERSHIP**  
(A Hawaii limited partnership)  
**Kapoho Management Company, Inc.**  
(General Partner)  
**Kapoho Land & Development Co. Ltd.**  
(808) 282-0448 (808) 935-5810  
P. O. Box 374  
Hilo, Hawaii 96721-0374

February 6, 2019

Subject: House Bill 1180 Relating to Natural Disasters and Housing


Aloha: COMMITTEE ON PUBLIC SAFETY, VETERANS, & MILITARY AFFAIRS: Rep. Gregg Takayama, Chair, and Rep. Cedric Asuega Gates, Vice Chair; COMMITTEE ON WATER, LAND, & HAWAIIAN AFFAIRS Rep. Ryan I. Yamane, Chair and Rep. Chris Todd, Vice Chair; COMMITTEE ON HUMAN SERVICES & HOMELESSNESS Rep. Joy A. San Buenaventura, Chair and Rep. Nadine K. Nakamura, Vice Chair; and Honorable Representatives.

I am testifying in support of Houses Bill 1180 Relating to Natural Disasters and Housing. Specific interests that I have are the reopening of Highway 132, and State aid (preferably grants) to ranchers and farmers directly impacted by the Kilauea disaster.

I have attached a map showing the Kapoho companies' lands and the area impacted by the 2018 eruption in Kilauea East Rift Zone. We recognize that many others lost more or everything. My family is the largest landowner impacted by the 2018 KERZ eruption. Based on the County of Hawaii's geographic information system, we had 1,265 acres covered by lava, including two of the fissures on our lands. Our direct losses are estimated to be in the low-eight figures, over \$10,000,000.00. Our papaya farmers lost or do not currently have access to an estimated 650 acres of papaya fields, and our rancher has had to relocate to other pasturage. Our farmers and ranchers are families, they want to return to lands we own, and they need disaster funds preferably as grants.




Reopening highway 132 would allow neighbors and agricultural tenants to access lands that are presently encircled by lava from the 2018 Kilauea Lower East Rift Zone KLERZ eruption. Now that we are in a recovery phase, we are in discussions with our rancher and farmers to return and are working with our farmers so they can get access, via Highway 132, to papaya and noni fields that are currently "lava-locked." We have explored the alternative of going through private lands and have concluded that the most straightforward solution is to have highway 132 reopened along the existing alignment.

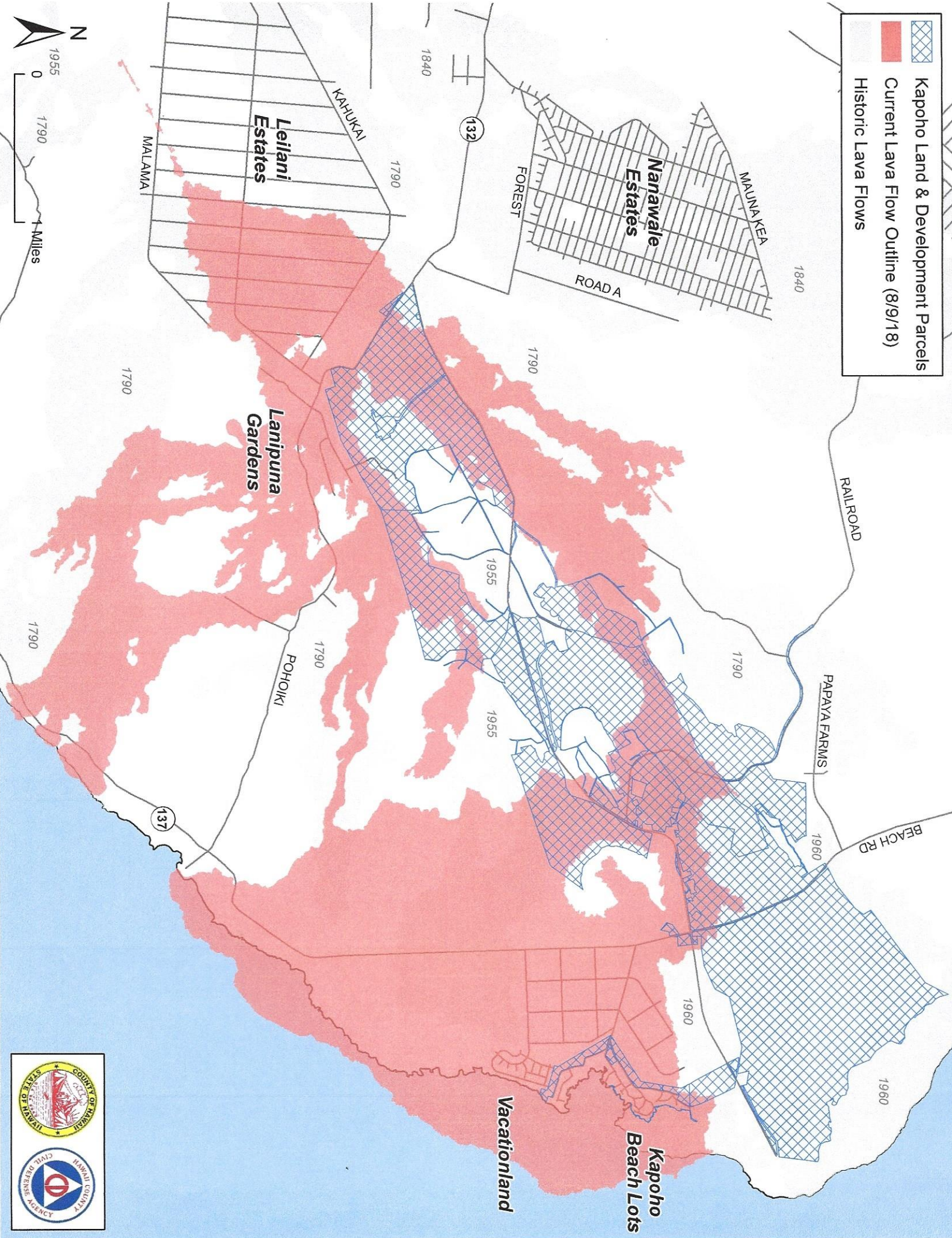
During the eruption, and in the vicinity of the flow, we had papaya farmers who asked to expand their acreage, and we allowed them to do so without seeking any compensation from them. During the eruption, our rancher immediately moved their cattle to pasturage in Kau, however due to ash fallout from Kilauea Crater they were forced to move again.

Mahalo a nui loa, 

A. Lono Lyman, Manager KLP and KLDC President KMC



	Kapoho Land & Development Parcels
	Current Lava Flow Outline (8/9/18)
	Historic Lava Flows



**HB-1180**

Submitted on: 2/6/2019 11:44:14 PM

Testimony for PVM on 2/8/2019 9:00:00 AM

<b>Submitted By</b>	<b>Organization</b>	<b>Testifier Position</b>	<b>Present at Hearing</b>
Melodie Aduja	O`ahu County Committee on Legislative Priorities of the Democratic Party of Hawai`i	Support	No

Comments:



**TESTIMONY BEFORE  
COMMITTEE PUBLIC SAFETY, VETERANS & MILITARY AFFAIRS,  
COMMITTEE ON WATER, LAND & HAWAIIAN STUDIES,  
COMMITTEE ON HOUSING  
AND COMMITTEE ON HUMAN SERVICES & HOMELESSNESS**

**H.B. 1180**

**Relating to Natural Disasters**

Friday, February 8, 2019  
9:00 a.m., Agenda Item #1  
State Capitol, Conference Room 329

Sharon Suzuki  
President, Maui County and Hawai'i Island Utilities  
Hawai'i Electric Light Company & Maui Electric Company

Aloha Chair Takayama, Chair Yamane, Chair Brower and Chair San Buenaventura, Vice Chair Gates, Vice Chair Todd, Vice Chair Matayoshi, Vice Chair Nakamura and Members of the Committees,

My name is Sharon Suzuki and I am testifying on behalf of Hawaiian Electric Company Inc. and its subsidiary utilities Maui Electric Company, Limited and Hawai'i Electric Light Company, Inc. ("the Hawaiian Electric Companies") in support of H.B. 1180, Relating to the Natural Disasters.

H.B. 1180 provides for funds to meet the needs for relief, recovery, mitigation, and remediation assistance from disaster damage, losses, and suffering caused by the extensive damage of the Kilauea eruption in the County of Hawaii including:

- \$30,000,000 in loans, not to be used to match other state funding,
- \$20,000,000 in funds to cover housing assistance.

The Kilauea eruption permanently altered large portions of the landscape, communities, and the economy, with losses tallying in the hundreds of millions for Hawai'i island. The eruption caused permanent displacement that involves complex



recovery planning and implementation. Over eight thousand acres were inundated by lava, covering neighborhoods, farms, a school, cultural sites, recreational destinations, roadways, water systems, and large portions of the electrical grid. Over three thousand parcels were destroyed or made inaccessible, which resulted in \$4,000,000 in annual county real property tax revenue losses.

Economic losses included the unprecedented closure of Hawai'i Volcanoes National Park, the County's largest tourist attraction and economic engine, and an estimated \$27,900,000 in agriculture losses. Puna Geothermal Ventures, a thirty-eight megawatt geothermal plant was shut down and isolated, resulting in a loss of approximately one-third of the Island's power production, and about half of its renewable energy portfolio.

The scale of the recovery exceeds the County of Hawai'i's capacity. The County's \$500,000,000 annual operation budget has been stretched to its limit. Even with federal disaster assistance, the county will need this additional assistance to provide the local match to federal funding and to address recovery needs beyond what federal programs cover.

Accordingly, the Hawaiian Electric Companies support H.B. 1180 to assist the County in its response, relief, recovery and mitigation efforts. Thank you for this opportunity to testify.

**HB-1180**

Submitted on: 2/6/2019 10:32:13 AM

Testimony for PVM on 2/8/2019 9:00:00 AM

<b>Submitted By</b>	<b>Organization</b>	<b>Testifier Position</b>	<b>Present at Hearing</b>
Stephanie Donoho	Kohala Coast Resort Association	Support	No

Comments:



Hawaii  
**Habitat**  
for Humanity®  
Association

February 5, 2019

House Committees on Water, Land & Hawaiian Affairs, and Housing, and Human Services and Homelessness  
Friday, February 8, 2019 at 9:00 a.m.  
House Conference Room 329

### **HB 1180 -- SUPPORT**

Dear Committee Chairs, Vice-Chairs and Members:

I am submitting testimony in my capacity as Executive Director of Hawaii Habitat for Humanity Association, a Habitat for Humanity State Support Organization, supporting five Habitat affiliates across the state of Hawaii to **STRONGLY SUPPORT SB1302**.

As a member of the State Voluntary Organizations Active in Disasters (HIVOAD), we have been involved in long-term disaster recovery efforts in partnership with our affiliate Habitat for Humanity Hawaii Island (HFHHI). Our work has been in support of the boots on the ground work that HFHHI has already started. This long-term recovery effort includes advocating and securing funding and land resources for the families who have been displaced by the Kilauea volcanic lava flow, forcing families to not only leave their homes, but to completely destroy their homes and the property it was built on. We look forward to working with the State of Hawaii and the County of Hawaii Island to relocate and build new homes for these families.

We know this is a long-term effort and are prepared to support the State and County in their efforts to not only relocate the lava flow victims, but also provide housing, specifically homeownership opportunities for Hawaii Island's low income families.

The State's appropriation of funds for disaster relief and recovery would allow us to continue our work in supporting the rebuilding efforts of Habitat for Humanity Hawaii Island. Our organization can provide additional funding through our current Community Development Financial Institution loan fund to help match and offset the funding provided by the State, through this appropriation.

Mahalo for your time, leadership and consideration. Please contact me directly at 808-847-7676 or [jean@hawaiihabitat.org](mailto:jean@hawaiihabitat.org) should you have any questions or need additional information.

Sincerely,

Jean Lilley  
Executive Director

2051 Young St. #82  
Honolulu, HI 96826  
808-847-7676  
[www.hawaiihabitat.org](http://www.hawaiihabitat.org)

**HB-1180**

Submitted on: 2/5/2019 5:53:51 PM

Testimony for PVM on 2/8/2019 9:00:00 AM

<b>Submitted By</b>	<b>Organization</b>	<b>Testifier Position</b>	<b>Present at Hearing</b>
Shannon Burrows	Individual	Support	No

## Comments:

Aloha honorable Representatives,As a 25 year resident of Hawaii and owners of Kapoho Crater in the LERZ,I support the recovery of rt132!and recovery of county roads rt137 and Pohoiki Rd.The road to recovery for our land-locked residents and farmers begins with the roads.Mahalo nui,Smiley Burrows



**HB-1180**

Submitted on: 2/6/2019 8:41:57 AM

Testimony for PVM on 2/8/2019 9:00:00 AM

<b>Submitted By</b>	<b>Organization</b>	<b>Testifier Position</b>	<b>Present at Hearing</b>
Selah levine	Individual	Support	No

Comments:

Help lower puna recover. Reopening roads is essential. Restore water lines at Pohoiki and create more public coastal access.

**HB-1180**

Submitted on: 2/6/2019 9:32:36 AM

Testimony for PVM on 2/8/2019 9:00:00 AM

<b>Submitted By</b>	<b>Organization</b>	<b>Testifier Position</b>	<b>Present at Hearing</b>
Oshi Simsarian	Individual	Support	No

## Comments:

Aloha, Please pass Bill 1180. I live in the lava locked area 4 miles outside of Paho. It is approx. 3 square miles with 60+ homes and dozens of farms. It has 1200 of prime agricultural land plus many small farms. We have not had road access for 8 months! We are in desperate need of a road and help! The money needs to be spent in the lava affected area not miles away! The whole area is suffering economically. Please help us recover and reclaim our lives.

**HB-1180**

Submitted on: 2/6/2019 9:57:54 AM

Testimony for PVM on 2/8/2019 9:00:00 AM

<b>Submitted By</b>	<b>Organization</b>	<b>Testifier Position</b>	<b>Present at Hearing</b>
Nancy Seifers	Individual	Support	No

Comments:

Aloha. We residents of Puna need your help and support in returning access to roads to our existing homes and farms. We wish to begin contributing to the economy of our district after 7 months of being isolated...it can be done. Mahalo

**HB-1180**

Submitted on: 2/6/2019 10:10:32 AM

Testimony for PVM on 2/8/2019 9:00:00 AM

Submitted By	Organization	Testifier Position	Present at Hearing
Lisa Roach	Individual	Support	Yes

Comments:

Aloha House members,

A number of hard-working community members have been displaced by the lava but their land is not covered, only the road home. If the County of Hawaii values agriculture, they would be rushing to open the highway in order to get these farmers home.

This doesn't seem to be happening and it seems due to Harry Kim's wish for more money from the Feds. We don't need a finished highway in order to gain access to our land again, just a temporary gravel road for now so that we can reclaim our degrading orchards, structures and belongings. Harry Kim's proposal that we "wait for Federal dollars" is going to destroy a significant piece of Puna. That and that alone. If he were in touch with Puna like he used to be, he'd do the right thing and open the road swiftly.

The money grabbing is unimportant to us. We just want to go home via a simple road. Please use whatever funds are available to help us help ourselves. We've invited HVO & USGS to locate monitoring equipment in our area. Without it, everyone is basically blind to any changes in this area. But they only can with a road.

We have papaya, citrus, macnut, avocado and noni orchards that can be restored with access. Cinder trucks that now use residential roads would be routed back onto a highway. The ATT cell tower that is necessary for emergency services needs to be maintained. Cattle ranchers want to return their livestock. Much of the land surrounded by lava is **prime agricultural land**. Please help us get back!

Thank you and I trust we will have a road back before the jungle has overtaken all that remains.

Aloha, Lisa Roach

14-6984 Hula Pl.

Pahoa HI 96778

**HB-1180**

Submitted on: 2/6/2019 10:17:05 AM

Testimony for PVM on 2/8/2019 9:00:00 AM

<b>Submitted By</b>	<b>Organization</b>	<b>Testifier Position</b>	<b>Present at Hearing</b>
bernadette sabth	Individual	Support	No

Comments:

To All the Powers That Be,

We lost our income, our home, our belongings, we just want to start over with what is left.

PLEASE HELP US, HELP OURSELVES. Sooner rather than later is the priority here.

bernadette sabath

Noni Farm Rd.

**HB-1180**

Submitted on: 2/6/2019 10:37:57 AM

Testimony for PVM on 2/8/2019 9:00:00 AM

<b>Submitted By</b>	<b>Organization</b>	<b>Testifier Position</b>	<b>Present at Hearing</b>
Caroline Thow	Individual	Support	No

Comments:

Thank you so much for considering appropriating funds to the reopening of 132. My husband and I are anxious to have road access to our home and farm, located in an area of about 3 square miles off of highway 132 in the Puna District. If the 1 and 1/2 miles of highway 132 which are covered with lava were cleared, we could finally start to repair our property and home, and with it heal a deep wound in our lives. We need to return to our home, our community, and our lives. Until we can, we feel like we are in limbo, and our financial situation remains unstable.

The first step to recovery for both us and our neighbors is a road! Please help us! A temporary road would suffice. PGV has a road, Pohoiki has a road, both built quickly under emergency proclamations. It's hard not to feel like the lowest priority and forgotten. Thank you for your consideration.

**HB-1180**

Submitted on: 2/6/2019 11:05:02 AM

Testimony for PVM on 2/8/2019 9:00:00 AM

<b>Submitted By</b>	<b>Organization</b>	<b>Testifier Position</b>	<b>Present at Hearing</b>
Karin	Individual	Support	No

Comments:

I, like dozens of my neighbors need a road to get to our properties off Highway 132. The longer this takes the more it compounds the work and monies necessary to rebuild our lives, homes, farms and businesses. The impact is financial, emotional and adds daily frustrations. We need the most basic affordable (temporary) road that can be built in a timely fashion. Do we really need the feds money to accomplish this? Without malice: I give a vote of 'no confidence' to the Mayor and suspect he doesn't really stand for Puna! He is a bigger roadblock than the berm of lava covering 132! His constituents want access and he seems immune to our pain and suffering as we consistantly campaign for the same access created for Pohiki.

Please add my voice to the chorus of displaced homeowners who want to go home and resume paying taxes for the Aina we love!

Let's make this PONO!

K.C. Dougherty

**HB-1180**

Submitted on: 2/6/2019 12:41:53 PM

Testimony for PVM on 2/8/2019 9:00:00 AM

<b>Submitted By</b>	<b>Organization</b>	<b>Testifier Position</b>	<b>Present at Hearing</b>
Eddie McLaren	Individual	Support	No

## Comments:

Desperately need a temporary access to our homes in Kapoho. Our home is standing but there is no way to get to it. At the moment we are trying to find some kind of rental within our means. We have used up our savings and FEMA is no longer helping us. They will reconsider that but first we must re-apply and show a rental agreement plus a cancelled check before they will even entertain the idea. Since we have neither our next option will be sleeping in our vehicles. Since we are in our seventies that option will take a big toll on our health. There are others in the same predicament. Please get this bill passed so we can all get back to our properties and get on with our lives.

Eddie and Pauline McLaren



Subject: Support for Lava Recovery  
HB 1180

Dear Representative,

I am writing in support of any and all Lava Recovery you can offer us. I am especially concerned with obtaining a temporary road to access Highway 132 I am a landowner, TMK below, who built my house, raised my family & maintained an organic garden on this land. I have lived here for 40 years and consider myself blessed to be a resident of Kapoho, Hawaii, County of Hawaii.

With this lava eruption event, I have been displaced, as one of the many in my community. I count myself as one of the lucky ones who still has a home & farm to go back to, if only the road would reopen.

Over the last 7 months I have moved 6 times into temporary housing. The lease on my current rental is expiring the end of the month. I am faced with moving again. How I wish it was to be moving home! My health has greatly suffered from this stress. I am now on temporary disability & have lost my job.

Please help us help ourselves! **We do not want to join the ranks of permanently displaced and/or homeless people.** Build us a temporary road to access our homes, farms and businesses until a more permanent solution is granted.

Thank you – I trust you will do the only responsible thing & approve & fund Bill HB 1180.

Katherine Marchese  
14-4326 Pahoa-Kapoho Rd.  
PO Box 1907  
Pahoa, Hi

TMK 314012002

**HB-1180**

Submitted on: 2/6/2019 2:05:54 PM

Testimony for PVM on 2/8/2019 9:00:00 AM

<b>Submitted By</b>	<b>Organization</b>	<b>Testifier Position</b>	<b>Present at Hearing</b>
Dominic Tidmarsh	Individual	Support	No

Comments:

Aloha.

This testimony is being submitted in support of Bill HB1180 and is in support of appropriating funds for disaster relief, recovery, mitigation, and remediation activities for the county of Hawai'i.

I wish to specifically address the need to re-establish vehicular access along the route that used to be Highway 132.

The communities of Lower Puna are still reeling after the catastrophic upheaval brought on by the eruption of Kilauea in 2018. The reopening of Highway 132 is a vital and critically urgent need for the recovery of the community. As the only road directly connecting Pahoa to the eastern most section of the island, Highway 132 served as an artery effectively supporting business, agricultural and residential activities in the area. The continued lack of access into the area, cut off when lava crossed Highway 132, is effectively holding businesses, farmers and residents hostage. Without some form of regular direct access to the affected properties, recovery can not fully even begin.

There is a **CRITICAL AND URGENT NEED** for the reopening of vehicular access along the route of the now-covered Highway 132. This does not need to be a paved highway at some yet to be determined time in the future. It needs to be a rough graded track over the lava **AS SOON AS POSSIBLE. RIGHT AWAY!**

This should be **PRIORITY NUMBER ONE** within the appropriation of funds for disaster recovery.

Commercial, agricultural and residential recovery is effectively being held hostage by the lack of access.

Fields, homes and properties are rapidly being overgrown and overcome by the relentless environment of tropical Lower Puna. Years and years of hard work and dedication are being undone by the lack of access.

The longer the current situation continues the greater the difficulties that will be faced in recovering and the greater the financial and emotional burden that will be placed on businesses, farmers and residents who are already traumatized from the massive upheaval brought about by the eruption.

Thank you for your consideration.

Dominic Tidmarsh. Halekamahina Road

(Property cut off by lava since May 29th, 2018. 8 months and counting).

**HB-1180**

Submitted on: 2/6/2019 3:57:20 PM

Testimony for PVM on 2/8/2019 9:00:00 AM

<b>Submitted By</b>	<b>Organization</b>	<b>Testifier Position</b>	<b>Present at Hearing</b>
Dennis Doland	Individual	Support	No

Comments:

Dear Members of the State House:

Our family of six has lived off of Hwy 132 since 2013. Last year's lava eruption certainly upended our lives in a big way, but now that things have settled down all we want to do is get back home!

Our house still stands in the kipuka just northeast of PGV. We hiked out there in December and our home was still in good shape, but without road access we are concerned it will succumb to the elements. We need a road ASAP so we can bring in solar panels and batteries, land clearing equipment, building materials, etc. We look forward to the day we and our children will again be able to raise cows, goats, pigs, and chickens as we did before the eruption. We also need to tend our fruit trees and gardens before they become completely overgrown.

We don't need a fancy road -- just a gravel road like the one that was built to Pohoiki would suffice for now.

We respectfully ask that you recognize the plight of us and our neighbors, and move HB1180 forward as quickly as possible!

Mahalo,

Dennis and Susana Doland

TMK: 3140180090000

## **PVMtestimony**

---

**From:** panna makuna <pannapanna7@gmail.com>  
**Sent:** Wednesday, February 6, 2019 2:46 PM  
**To:** PVMtestimony  
**Subject:** HB 1180

Aloha to all

I'm writing as a strong advocate of Rep Joy Buenaventura's HB 1180.

As a longtime & productive resident of Hawaii county, I wish to become productive once again.

Personally, I was spared by lava, but lost my home and possessions to the July 28th lava generated fire, as have many others. Despite having nothing to return to, I am desperate to return. I am desperate to start the rebuilding process.

Absolutely essential to that, is road access. I am confident that temporary road access would satisfy the most immediate needs of the majority of displaced property owners, until the county sees fit to make a more "permanent" road. I'm speaking as a resident in the hwy 132 vicinity, and I'm sure that the desires of other displaced residents of other affected areas would coincide. Please honor the pain and sacrifices of so many, and for so long. ROAD ACCESS PLEASE !!!

Glenn McKinney

TMK: 14-017-007

PO box 738

Pahoa, HI 96778

**HB-1180**

Submitted on: 2/6/2019 4:39:27 PM

Testimony for PVM on 2/8/2019 9:00:00 AM

<b>Submitted By</b>	<b>Organization</b>	<b>Testifier Position</b>	<b>Present at Hearing</b>
Debra Smith	Individual	Support	No

Comments:

Dear Committee Members,

My husband and I lost our home in Kapoho Vacationland Farmlots, but we didn't lose all our land. We have about an acre of land left with fruit trees, garden areas and a greenhouse still standing. We need access established, we want to return to our property to maintain it and to rebuild. We are retired and have limited funds, starting over in a new location is not a good choice for us. Dragging out this recovery mode is adding stress to all of us who were affected. I urge you to pass this bill to help people recover, especially those who have homes and farms still standing but cut off. We need access as soon as possible, not 1-2 years from now. The USGS has deemed this eruption over, the time to move forward is now.

Thank you for your consideration.

Debra Smith

**PLEASE APPROVE AND FUND BILL HB 1180**

Dear Members of the House,

My home and farm is located on Highway 132 in Kapoho isolated by lava on Hwy 132. The solar energy system is in good condition and catchment tank is full. I am a 20 year resident of Hawaii County, 15 years in Kapoho. . All is intact, if lying fallow from lack of grazing and planting. It waits only for a road that I may return to my home and the land return to its producing capacity.

My family helped me build my home in Kapoho in 2007, in order for me to manage my disability, and, through farming and serving my community through my extensive experience, teaching farming and animal husbandry skills, thus allowing me to age in place with a productive independent life.

My farm sustainably supported 80 animals, also evacuated are now being cared for by our generous farming community. Unable to secure a rental, I was forced to leave the island to await road access to my home. Caring, generous friends on the mainland have taken us in, my house pets and I, *temporarily*. **WITHOUT AT LEAST TEMPORARY ROAD ACCESS I WILL SOON BE AMONG THE HOMELESS IN HAWAII!**

My story mirrors those of many of my displaced neighbors. I am senior with a productive farm. I have one home, with no possibility of having another. I have watched the needs of communities on our island and throughout the state when they have been compromised by natural adversity, each being supported and their needs addressed. **We need your help this time.** Hawaii is stronger whole than in pieces.

**PLEASE APPROVE AND FUND BILL HB 1180**

Our lives literally depend on it.

Thank you.

Sincerely,  
Valerie Barber  
Hwy 132, Mile Marker 6, Pahoa  
TMK 1-4-:014:007

**HB-1180**

Submitted on: 2/6/2019 8:44:30 PM

Testimony for PVM on 2/8/2019 9:00:00 AM

<b>Submitted By</b>	<b>Organization</b>	<b>Testifier Position</b>	<b>Present at Hearing</b>
Ann Kobsa	Individual	Support	No

Comments:

Aloha Representatives,

I support this bill because I want to see Hwy 132 reopened in the lava-affected area so that people can access their homes and land. Mahalo nui loa, Ann



**HB-1180**

Submitted on: 2/6/2019 9:34:05 PM

Testimony for PVM on 2/8/2019 9:00:00 AM

<b>Submitted By</b>	<b>Organization</b>	<b>Testifier Position</b>	<b>Present at Hearing</b>
Danielle Holland	Individual	Support	No

Comments:

I'm in support of appropriating funds for disaster relief, recovery, mitigation, and remediation activities for the county of Hawai'i!! People of lower Puna need access to their homes!

**HB-1180**

Submitted on: 2/7/2019 6:22:40 AM

Testimony for PVM on 2/8/2019 9:00:00 AM

<b>Submitted By</b>	<b>Organization</b>	<b>Testifier Position</b>	<b>Present at Hearing</b>
Ralph Turre	Individual	Support	No

## Comments:

I am writing in support of HB1180 to create a temporary road to be built over Hwy 132 for residents and farmers to begin regaining their lives and livelihoods. Although it was nice to have the temporary road built to Pohoiki (Isaac Hale Park), the livelihood of residents and farmers whose homes and farms still exist but are cut off due to the lava flow seem to be more of a priority to allow these individuals to access their homes and farms. Should the area be deemed inaccessible from the top of Hwy 132 due to instability across the main lava flow, then the road should be built up from Pohoiki far enough to allow access to homes and farms that have not been destroyed by the flow.

**HB-1180**

Submitted on: 2/7/2019 11:13:42 AM

Testimony for PVM on 2/8/2019 9:00:00 AM

<b>Submitted By</b>	<b>Organization</b>	<b>Testifier Position</b>	<b>Present at Hearing</b>
ginger carlson	Individual	Comments	No

## Comments:

I live in LEILANI ESTATES, and am concerned about my subdivision and all the folks that live in lower Puna, in case of another disaster. Today thousands of us in lower Puna have only 1 escape route if another event of any kind closes one of our few roads left. We need a complete circle of roads around lower Puna so there are two ways to get in or out. Many people haven't been able to access their houses now for 8 months. We need the road work to continue until we can all feel safe, reach our homes, flee if need be, and not feel like we are the forgotten children. Please alot the funding for 132 to connect the old boat ramp and Pohiki road creating some loops, so we can all be safe . Mahalo

**HB-1180**

Submitted on: 2/7/2019 11:53:19 AM

Testimony for PVM on 2/8/2019 9:00:00 AM

<b>Submitted By</b>	<b>Organization</b>	<b>Testifier Position</b>	<b>Present at Hearing</b>
Mary Alexander	Individual	Support	No

Comments:

100 percent in support funding for (among many other things) a temporary road to be built over Hwy 132 for residents and farmers to begin regaining their lives and livelihoods. What is taking so long? Corruption is my guess. Thank you.

**HB-1180**

Submitted on: 2/7/2019 1:20:12 PM

Testimony for PVM on 2/8/2019 9:00:00 AM

<b>Submitted By</b>	<b>Organization</b>	<b>Testifier Position</b>	<b>Present at Hearing</b>
Randall Scharnhorst	Individual	Support	No

Comments:

Aloha,

Thank-you for your support of HB 1180

I am a resident of Hawaii since 1976. I have a house and 6 acre farm in Kapoho. IT WAS NOT COVERED WITH LAVA. I have been displaced. I need access back to my home. This can be accomplished by reopening the road to Kapoho in the same manner that the road to the Boat Ramp was done. Myself and many of my neighbors await your support of this Bill. Please help us to help You rebuild the community of Lower Puna. Papayas, bannas, flowers, and tourism will return. This is prime agricultural land that benifits the farmers, residents, tourists, and The State of Hawaii.

Thank-you again for your support of this Bill

Randall

**HB-1180**

Submitted on: 2/7/2019 1:20:25 PM

Testimony for PVM on 2/8/2019 9:00:00 AM

**LATE**

Submitted By	Organization	Testifier Position	Present at Hearing
Sally Daughtrey	Medical Clinic	Support	No

Comments:

Aloha House members,

Hard-working community members have been displaced by the lava but their land is not covered, only the road to the land. If the County of Hawaii values agriculture, they would be rushing to open the highway in order to get these farmers home before the land is devalued by lack of maintenance.

This doesn't seem to be happening. WHY? . We don't need a finished highway in order to gain access to our land again, just a temporary gravel road for now so that we can reclaim our degrading orchards, structures and belongings. Harry Kim's proposal that we "wait for Federal dollars" is causing unnecessary homelessness and suffering and is going to destroy a significant piece of Puna. That and that alone. If he were in touch with Puna he'd do the right thing and open the road swiftly.

The money grabbing is unimportant to us. We just want to go home via a simple road. Please use whatever funds are available to help us help ourselves. We've invited HVO & USGS to locate monitoring equipment in our area. Without it, everyone is basically blind to any changes in this area. But they only can with a road.

We have papaya, citrus, macnut, avocado and noni orchards that can be restored to productivity with simple legal access. Cinder trucks that now use degrading residential roads would be routed back onto a highway. The ATT cell tower that is necessary for emergency services needs to be maintained. Cattle ranchers want to return their livestock. Much of the land surrounded by lava is **prime agricultural land**. Please help us get back to work!

Aloha

Dr Sally Daughtrey

**HB-1180**

Submitted on: 2/7/2019 5:52:59 PM

Testimony for PVM on 2/8/2019 9:00:00 AM



<b>Submitted By</b>	<b>Organization</b>	<b>Testifier Position</b>	<b>Present at Hearing</b>
M. Eileen O'Hara	Individual	Support	No

Comments:

Please support this request for relief assistance due to the 2018 lava eruption in Puna that destroyed over 700 homes, took out major roadways, and decimated the local economy. Please support this measure.

**LATE**

**HB-1180**

Submitted on: 2/7/2019 9:18:16 PM

Testimony for PVM on 2/8/2019 9:00:00 AM

<b>Submitted By</b>	<b>Organization</b>	<b>Testifier Position</b>	<b>Present at Hearing</b>
Jennifer Johansen	Individual	Support	No

Comments:

Please support this bill to kokua our lower puna community after the 2018 eruption.  
Mahalo





Inspiring Hope, Changing Lives

Visit us on the web: [www.hopeserviceshawaii.org](http://www.hopeserviceshawaii.org)

Connect via email: [info@hopeserviceshawaii.org](mailto:info@hopeserviceshawaii.org)

HOPE Help Line: 808-935-3050

Hearing: HB 1180 in support  
Date: February 8, 2019  
Location: State Capitol – Rm. 329  
To: Committee Chair, Vice-Chair, and Committee Members:



Aloha Committee Chair, Vice-Chair, and Committee Members:

I am submitting testimony on behalf of HOPE Services Hawai'i, a nonprofit homelessness service provider, in support of HB 1180, which would provide desperately needed funds to help Hawai'i County recover from the Kilauea eruption.

The resilient people of Puna have continued to lift each other up and help their neighbors in the relief effort for almost a year, despite unimaginable strain. One such resident is Hershel Hood of Lanipuna Gardens, who was given only ten minutes to evacuate. He was not able to bring his important documents, his computer, or even shoes. He never saw his dogs again. After his home and everything he owned was buried under lava, Hershel didn't know what to do, but he knew there were others in need. He began volunteering as a chef at World Central Kitchen, cooking meals for his fellow evacuees five days a week, while trying to pick up the pieces of his own life.

Many others who were displaced also contributed to the relief effort, and are to be commended. However, the reality is that Hawai'i County is the poorest in the state--and it is time to show the same aloha to the people of Puna that they have shown to each other.

For these reasons, I strongly urge you pass HB 1180.

Mahalo for your consideration.

Sincerely,  
Brandee Menino

Chief Executive Officer  
HOPE Services Hawaii, Inc.

JOIN OUR COMMUNITY



HOPE SERVICES HAWAII, INC.  
ADMINISTRATIVE  
OFFICE  
357 Waiuanue Avenue  
Hilo, HI 96720  
phone: (808) 935-3050  
fax: (808) 935-3794

HALE MALUHIA  
EMERGENCY SHELTER  
110 Ululani Street  
Hilo, HI 96720  
phone: (808) 443-4717  
fax: (808) 934-7456

KIHEI PUA  
EMERGENCY SHELTER  
115 Kapi'olani Street  
Hilo, HI 96720  
phone: (808) 933-6053  
fax: (808) 934-0904

VETERAN HOUSING  
PROGRAMS  
21 West Ohea Street  
Hilo, HI 96720  
phone: (808) 934-8658  
fax: (808) 934-8658

FRIENDLY PLACE  
RESOURCE CENTER  
74-5593 Pawai Place  
Kailua-Kona, HI 96740  
phone: (808) 933-6062  
fax: (808) 329-6219

WEST HAWAII EMERGENCY  
HOUSING PROGRAM  
74-5593 Pawai Place  
Kailua-Kona, HI 96740  
phone: (808) 217-5560  
fax: (808) 327-2171

BOARD OF DIRECTORS  
President  
Anne Harpham

Interim Vice-President/  
Treasurer  
Charlene Iboshi

Secretary  
Rev. Robert Stark, SSS

Directors  
Carol R. Ignacio  
Gwen DeCoito  
Patrick Hurney  
Dean Au

EXECUTIVE LEADERSHIP  
Chief Executive Officer  
Brandee Menino