

DAVID Y. IGE
GOVERNOR



ARTHUR J. LOGAN
MAJOR GENERAL
ADJUTANT GENERAL

KENNETH S. HARA
BRIGADIER GENERAL
DEPUTY ADJUTANT GENERAL

STATE OF HAWAII
DEPARTMENT OF DEFENSE
OFFICE OF THE ADJUTANT GENERAL
3949 DIAMOND HEAD ROAD
HONOLULU, HAWAII 96816-4495

STATE OF HAWAII
DEPARTMENT OF DEFENSE
HAWAII EMERGENCY MANAGEMENT AGENCY

TESTIMONY ON
HOUSE BILL 1180 HD1, RELATING TO NATURAL DISASTERS

Before the House Committees on
FINANCE

by

THOMAS L. TRAVIS
Administrator, Hawaii Emergency Management Agency (HI-EMA)

Aloha Chair Luke and Vice-Chair Cullen, and Members of the Committee:

The Hawaii Emergency Management Agency (HI-EMA) **supports** House Bill 1180 HD1.

House Bill 1180 HD1 Appropriates funds for disaster relief, recovery, mitigation, and remediation activities for the county of Hawai'i.

The unprecedented volcanic eruptions on the island of Hawaii from May 3, 2018 to August 14, 2018 destroyed hundreds of homes, communities, businesses, farms, schools, cultural sites, water systems, electrical grid, and roadways.

HI-EMA deployed several personnel to assist the Hawaii County during the Kilauea eruption and continues to provide support to the long-term recovery and hazard mitigation efforts.

Note: My comments represent HI-EMA concerns at the state emergency management level only. I would defer to the separate comment/testimonies of the county emergency management agencies, as they would be the jurisdictions impacted by this legislation at the local level.

Thank you for the opportunity to provide testimony on House Bill 1180 HD1.

Thomas L. Travis: Thomas.L.Travis@hawaii.gov; 808-733-43

DAVID Y. IGE
Governor

JOSH GREEN
Lt. Governor



PHYLLIS SHIMABUKURO-GEISER
Acting Chairperson
Board of Agriculture

State of Hawaii
DEPARTMENT OF AGRICULTURE
1428 South King Street
Honolulu, Hawaii 96814-2512
Phone: (808) 973-9600 FAX: (808) 973-9613

TESTIMONY OF THE DEPARTMENT OF AGRICULTURE
BEFORE THE HOUSE COMMITTEE ON FINANCE

FEBRUARY 21, 2019
12:30 P.M.
CONFERENCE ROOM 308

HOUSE BILL NO. 1180 HD1
RELATING TO NATURAL DISASTERS

Chairperson Luke and Members of the Committee:

Thank you for the opportunity to testify on House Bill 1180 HD1. This bill provides an appropriation to the County of Hawaii to support the disaster relief efforts from the Kilauea eruption. The Department supports this bill and offers comments.

The agricultural industry suffered great losses due to the Kilauea eruption. With nearly \$28 million in losses to the agricultural industry in the County of Hawaii, the State must find ways to support agricultural recovery and revive production on Hawaii Island. The Department supports the efforts of the County of Hawaii in its agricultural recovery from the Kilauea eruption.

Thank you for the opportunity to testify on this measure.



VALERIE T. POINDEXTER

*Council Member
Chair, Committee on Parks and Recreation
Council District 1*



Phone: (808) 961-8018
Fax: (808) 961-8912
Email: valerie.poindexter@hawaiicounty.gov

HAWAI'I COUNTY COUNCIL

*County of Hawai'i
Hawai'i County Building
25 Aupuni Street, Suite 1402
Hilo, Hawai'i 96720*

February 19, 2019

Committee on Finance

Representative Sylvia Luke, Chair

Representative Ty J.K. Cullen, Vice Chair

Email: repluke@capitol.hawaii.gov

Email: repcullen@capitol.hawaii.gov

Subject: Hearing Testimony Supporting HB1180 HD1, Relating to Natural Disasters

Hearing: February 21, 2019, 12:30 p.m., Conference Room 308

Dear Finance Chair Sylvia Luke and Vice Chair Ty Cullen:

On behalf of myself and the constituents of Council District 1, Hāmākua, County of Hawai'i, I would like to express our support of HB1180 HD1 that appropriates funds for disaster relief, recovery, mitigation, and remediation activities for the County of Hawai'i and requires reporting of monthly expenditures to the Department of Budget and Finance.

The impacts and losses resulting from the eruption are extensive. It will involve complex recovery planning. Hawai'i County is eager to work diligently with the State to help our communities heal from this disaster.

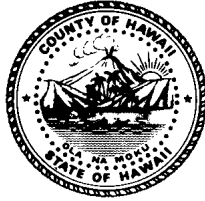
I strongly support and urge the enactment of HB1180 HD1. Thank you for your time and consideration.

Sincerely,

A handwritten signature in cursive script that reads "Valerie T. Poindexter".

Valerie T. Poindexter

Harry Kim
Mayor



Diane L. Ley
Director

Ron Whitmore
Deputy Director

County of Hawai'i

DEPARTMENT OF RESEARCH AND DEVELOPMENT

25 Aupuni Street, Room 1301 • Hilo, Hawai'i 96720-4252
(808) 961-8366 • Fax (808) 935-1205
E-mail: chresdev@hawaiicounty.gov

TESTIMONY OF DIANE LEY

KĪLAUEA RECOVERY MANAGER & COUNTY OF HAWAII DEPARTMENT OF RESEARCH & DEVELOPMENT DIRECTOR

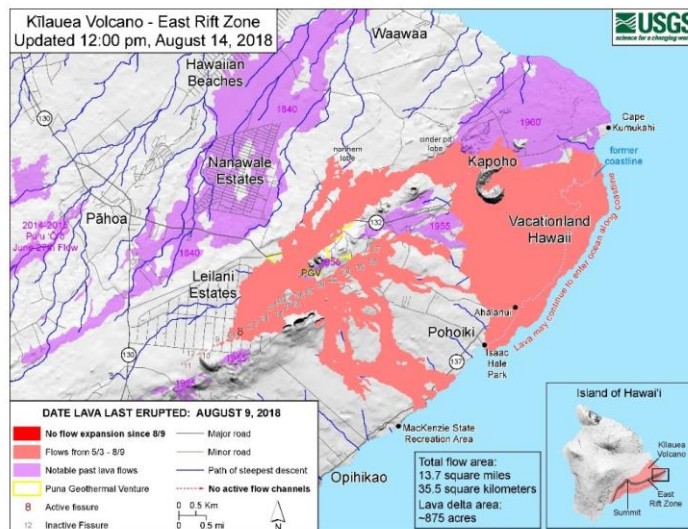
February 8, 2019

HB1180, HD1, RELATING TO NATURAL DISASTERS

Honorable Chairperson Luke & Committee Members,

Thank you for the opportunity to provide supportive testimony for HB1180, HD1, relating to natural disasters. The passage of this bill will significantly assist communities in recovering from an estimated \$800 million in impacts from the recent eruption of Kīlauea by assuring critical resources will be in place to support those impacted and the federally required local match is available for critical infrastructure replacement. State personnel and leadership were present from start of the eruption providing the County of Hawai'i with significant support over the course of 100+ days, and the Governor provided financial support for both response and to kick-start the recovery process. **Now the County is requesting the Legislature's financial support in assuring families, businesses and communities can move forward with recovery to rebuild in a safer, healthier and more resilient manner.**

The Kīlauea eruption began on May 3, 2018, in the lower East Rift Zone in the Puna district on the island of Hawai'i, 24 fissures opened and poured forth massive volumes of lava resulting in more than 8,000 acres of land covered with lava. More than 700 homes were lost, and more than 50 homes remain isolated. Significant island-wide economic disruption occurred with 921 small business jobs lost, 1,700 acres of farm and ranch lands impacted, one of the island's most productive marine fisheries was cut off from access and tourism revenue dropped in excess of \$200 million.



Hawai'i County is an Equal Opportunity Provider and Employer

The eruption resulted in the loss of \$236.5 million in critical infrastructure including primary roads and domestic waterlines to an area comparable to a little more than the combined communities of Waianae and Makaha. Access to basic roads are critical to the successful recovery of farmers, ranchers, fishermen/women and those whose homes were left standing but isolated. Also, necessary will be the availability of financial resources to redirect critical infrastructure to communities that families choose for relocation. Fortunately, FEMA can provide a 75% cost share for roads, waterlines and public facilities such as parks. **The County is asking the Legislature to provide appropriate resources to meet the required 25% local match for roads and other public infrastructure.**

Because so many residents lost their homes exacerbating an existing affordable housing crisis, the County is taking steps to ready a range of housing assistance programs – from continued rental assistance and re-establishment of a rental rehabilitation program; to expedited home and wastewater permitting and a proposed down-payment revolving loan fund; to exploratory efforts to stand up a community land trust and financial literacy program that would expand the capacity of families to secure affordable replacement homes. **The County is asking the Legislature to provide resources to assist the impacted families and communities; thus, empowering their successful recoveries.**

The County initiated recovery steps while emergency response was on-going; however, experts project that full recovery will take 5-10 years due to the significant disruption of families' lives and the economy, and the destruction of the environment. Recovery is complex and must address immediate needs while giving due consideration to future risks, community planning and the response capacity of families, businesses, communities and all levels of government. **It is critical that we learn from the past and plan for a more resilient future; hence, the County recognizes the need to provide critical information for decision-makers – families, businesses and government – to make informed long-term decisions.** Hence, efforts are on-going to gather information as to a broad range of federal funding sources and to prepare a risk assessment, hazard mitigation studies and a financial analysis so that decision-makers will be equipped to assess and determine what public assets and services should be returned to the impacted area and those assets and services to be redirected to other areas. Thoughtful and comprehensive dialogue, planning and implementation are key to a full recovery that results in healthier and more resilient communities.

The County has been proactive working with partners in planning and implementing short-term, intermediate and long-term recovery efforts. To date FEMA has provided over \$10 million in Individual Assistance directly to impacted households, and the County has secured over \$2.1 million in a mix of federal and private grants to support housing case management, financial literacy and economic recovery planning. Potential future funding includes federal Community Development Block Grant - Disaster Relief and a wide range of disaster assistance programs pending before Congress. At the State level, the Governor and the Hawaii Visitors and Convention Bureau have been responsive in providing resources to assure recovery is moving forward. All of which will go toward recovering from the estimated \$800 million in impacts as a result of the eruption. **The Legislature's favorable consideration of HB1180, HD1 is requested to support long-term recovery efforts for our families, businesses, and communities and would be sincerely appreciated.**

**TESTIMONY BEFORE
COMMITTEE ON FINANCE**

**H.B. 1180, HD1
Relating to Natural Disasters**

Thursday, February 21, 2019
12:30 p.m., Agenda Item #4
State Capitol, Conference Room 308

Sharon Suzuki
President, Maui County and Hawai'i Island Utilities
Hawai'i Electric Light Company & Maui Electric Company

Aloha Chair Luke, Vice Chair Cullen and Members of the Committees,

My name is Sharon Suzuki and I am testifying on behalf of Hawaiian Electric Company Inc. and its subsidiary utilities Maui Electric Company, Limited and Hawai'i Electric Light Company, Inc. ("the Hawaiian Electric Companies") in support of H.B. 1180, HD1, Relating to the Natural Disasters.

H.B. 1180, HD1 provides for funds to meet the needs for relief, recovery, mitigation, and remediation assistance from disaster damage, losses, and suffering caused by the extensive damage of the Kilauea eruption in the County of Hawaii including:

- \$40,000,000 in loans to the County of Hawai'i as may be necessary to obtain non-state funds, including federal funds. The loan terms shall be negotiated by the Director of Finance.
- \$20,000,000 in subsidies to the County of Hawai'i.

The funds shall be released to the County upon the Hawai'i County Council adopting a resolution requesting the release of the funds.

The Kilauea eruption permanently altered large portions of the landscape, communities, and the economy, with losses tallying in the hundreds of millions for Hawai'i island. The eruption caused permanent displacement that involves complex recovery planning and implementation. Over eight thousand acres were inundated by lava, covering neighborhoods, farms, a school, cultural sites, recreational destinations, roadways, water systems, and large portions of the electrical grid. Over three thousand parcels were destroyed or made inaccessible, which resulted in \$4,000,000 in annual county real property tax revenue losses.

Economic losses included the unprecedented closure of Hawai'i Volcanoes National Park, the County's largest tourist attraction and economic engine, and an estimated \$27,900,000 in agriculture losses. Puna Geothermal Ventures, a thirty-eight megawatt geothermal plant was shut down and isolated, resulting in a loss of approximately one-third of the Island's power production, and about half of its renewable energy portfolio.

The scale of the recovery exceeds the County of Hawai'i's capacity. The County's \$500,000,000 annual operation budget has been stretched to its limit. Even with federal disaster assistance, the county will need this additional assistance to provide the local match to federal funding and to address recovery needs beyond what federal programs cover.

Accordingly, the Hawaiian Electric Companies support H.B. 1180, HD1 to assist the County of Hawai'i in its response, relief, recovery and mitigation efforts. Thank you for this opportunity to testify.

HB-1180-HD-1

Submitted on: 2/19/2019 9:49:48 AM

Testimony for FIN on 2/21/2019 12:30:00 PM

Submitted By	Organization	Testifier Position	Present at Hearing
Warren Watanabe	Maui County Farm Bureau	Support	No

Comments:



P.O. Box 253, Kunia, Hawai'i 96759
Phone: (808) 848-2074; Fax: (808) 848-1921
e-mail info@hfbf.org; www.hfbf.org

February 21, 2019

HEARING BEFORE THE
HOUSE COMMITTEE ON FINANCE

TESTIMONY ON HB 1180, HD1
RELATING TO NATURAL DISASTERS

Room 308
12:30 PM

Aloha Chair Luke, Vice Chair Cullen, and Members of the Committee:

I am Brian Miyamoto, Executive Director of the Hawaii Farm Bureau (HFB). Organized since 1948, the HFB is comprised of 1,900 farm family members statewide, and serves as Hawaii's voice of agriculture to protect, advocate and advance the social, economic and educational interests of our diverse agricultural community.

The Hawaii Farm Bureau supports HB 1180, HD1, which appropriates funds for disaster relief, recovery, mitigation, and remediation activities for the County of Hawaii to assist ranchers and farmers negatively affected by the Kilauea eruption.

2018 was a particularly difficult year for Hawaii's farmers and ranchers. The historic torrential rains and disastrous floods on Kauai and Oahu in April, the Kilauea eruption which caused devastation from lava and ash on Hawaii Island, Hurricane Lane and Tropical Storm Olivia were major natural disasters that had a drastic impact to Hawaii's agriculture industry. Unfortunately, Hawaii farmers and ranchers have been and will continually be impacted by damaging weather or natural disasters such as epidemic disease, pest outbreaks, high wind, thunderstorms, hurricanes, fire, flood, earthquakes, lava flow, vog or other volcanic activity, droughts, and tidal waves.

Big Island farmers and ranchers impacted by the Kilauea eruption need assistance with funding to help repair damaged infrastructure, replant crops, or replace equipment and supplies allowing them to continue farming or ranching.

Thank you for this opportunity to testify on this important subject.

HB-1180-HD-1

Submitted on: 2/17/2019 2:24:21 PM

Testimony for FIN on 2/21/2019 12:30:00 PM

Submitted By	Organization	Testifier Position	Present at Hearing
Stephanie Donoho	Kohala Coast Resort Association	Support	No

Comments:

HB-1180-HD-1

Submitted on: 2/20/2019 11:23:32 AM

Testimony for FIN on 2/21/2019 12:30:00 PM

Submitted By	Organization	Testifier Position	Present at Hearing
Melodie Aduja	O`ahu County Committee on Legislative Priorities of the Democratic Party of Hawai`i	Support	No

Comments:

HB-1180-HD-1

Submitted on: 2/20/2019 7:21:22 AM

Testimony for FIN on 2/21/2019 12:30:00 PM

Submitted By	Organization	Testifier Position	Present at Hearing
Susan Kim	VHCA, KKWA	Support	No

Comments:

Aloha, We would like to **support HB1180 with the specification that disaster funds are allocated to the disaster area and victims**. Over 70% of the disaster victims and area is in Kapoho. We have been waiting patiently for the County to restore access to our properties. We were told to wait and the County would "do the right thing" and allow us back to our properties, some of which are still in tact, and many of which will need to be rebuilt. Specifically, we believe it is the County/government's duty to rebuild **Rt. 132 and Rt. 137**. We believe it is the responsibility of our representatives to ensure tax-payer dollars which is intended to fund disaster relief, do exactly as the words intend: relieve disaster areas and victims. This should not be an uphill battle for the victims who have already suffered enough. The entire island is built on lava, we are fully aware of the risks, yet we chose to invest, build and buy property on the island of Hawaii. We bring millions of dollars in GET, TAT and Real Property Taxes. We are choosing to rebuild Kapoho and we would like your support.

The Kapoho Vacationland Community provided parking areas and access to Waiopae Tide Pools for tourists and locals to enjoy, out of our own funds. We organized to protect our coral and reefs by working with the federal government to declare the area a marine conservation district. These examples are only a drop in the bucket of value the people of Kapoho have brought to the island of Hawaii. If you provide the funding and the roads, we will once again bring significant value to the island.

VHCA (Vacationland Hawaii Community Association) and Kapoho Kai Water Association (KKWA) are mobilizing. We are organizing as a community, working together with Kapoho Beach Lots and Leilani Estates. Our patience is waning. Many of our community members are anxious to get home.

We support HB1180 and would like to specifically name the completion of 132 and 137, along with infrastructure in Kapoho to be the recipient of these funds.

Mahalo nui.

KAPOHO LAND PARTNERSHIP
(A Hawaii limited partnership)
Kapoho Management Company, Inc.
(General Partner)
Kapoho Land & Development Co. Ltd.
(808) 282-0448 (808) 935-5810
P. O. Box 374
Hilo, Hawaii 96721-0374

February 18, 2019

Subject: House Bill 1180 House Draft 1, Relating to Natural Disasters and Housing

Aloha: HOUSE COMMITTEE ON FINANCE CHAIR Sylvia Luke; Vice Chair Ty J.K. Cullen; NS and Honorable Houses Committee Members.

I am testifying in support of Houses Bill 1180 Relating to Natural Disasters and Housing. Specific interests that I have are the reopening of Highway 132, and State aid (preferably grants) to ranchers and farmers directly impacted by the Kilauea disaster.

Concerns that I have that arise from both representing the largest land owner impacted by the and having attended the earlier House and Senate hearings for HM 1180 and SB 1302, both relating to Natural Disasters and specifically the 2018 Kilauea Lower East Rift Zone eruption, are:

- 1) The County of Hawaii has not revealed what its plan is, because it does not yet have one.
- 2) Comments have been made at hearings by County representative that some impacted residents want to remain where they are and some want to move out of the district, and yet there is nothing presented that substantiates this.
- 3) Political interests and business interest are clearly making a grab to divert the disaster funding for areas outside of the impacted area and to benefit individuals and businesses not impacted by the disaster.

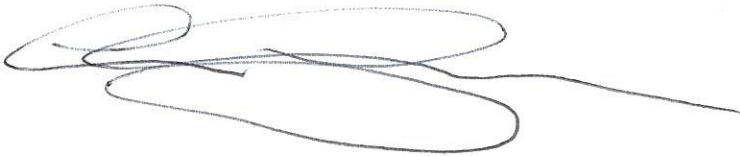
I ask that the funding be restricted to "solely benefit those individuals, ranchers, farmers, and businesses who were directly impacted by the 2018 Kilauea disaster." To do anything less would be unfair to those who were directly impacted by the eruption.

I have attached a map showing the Kapoho companies' lands and the area impacted by the 2018 eruption in Kilauea East Rift Zone. We recognize that many others lost more or everything. My family is the largest landowner impacted by the 2018 KERZ eruption. Based on the County of Hawaii's geographic information system, we had 1,265 acres covered by lava, including two of the fissures on our lands. Our direct losses are estimated to be in the low-eight figures, over \$10,000,000.00. Our papaya farmers lost or do not currently have access to an estimated 650 acres of papaya fields, and our rancher has had to relocate to other pasturage. Our farmers and ranchers are families, they want to return to lands we own, and they need disaster funds preferably as grants.

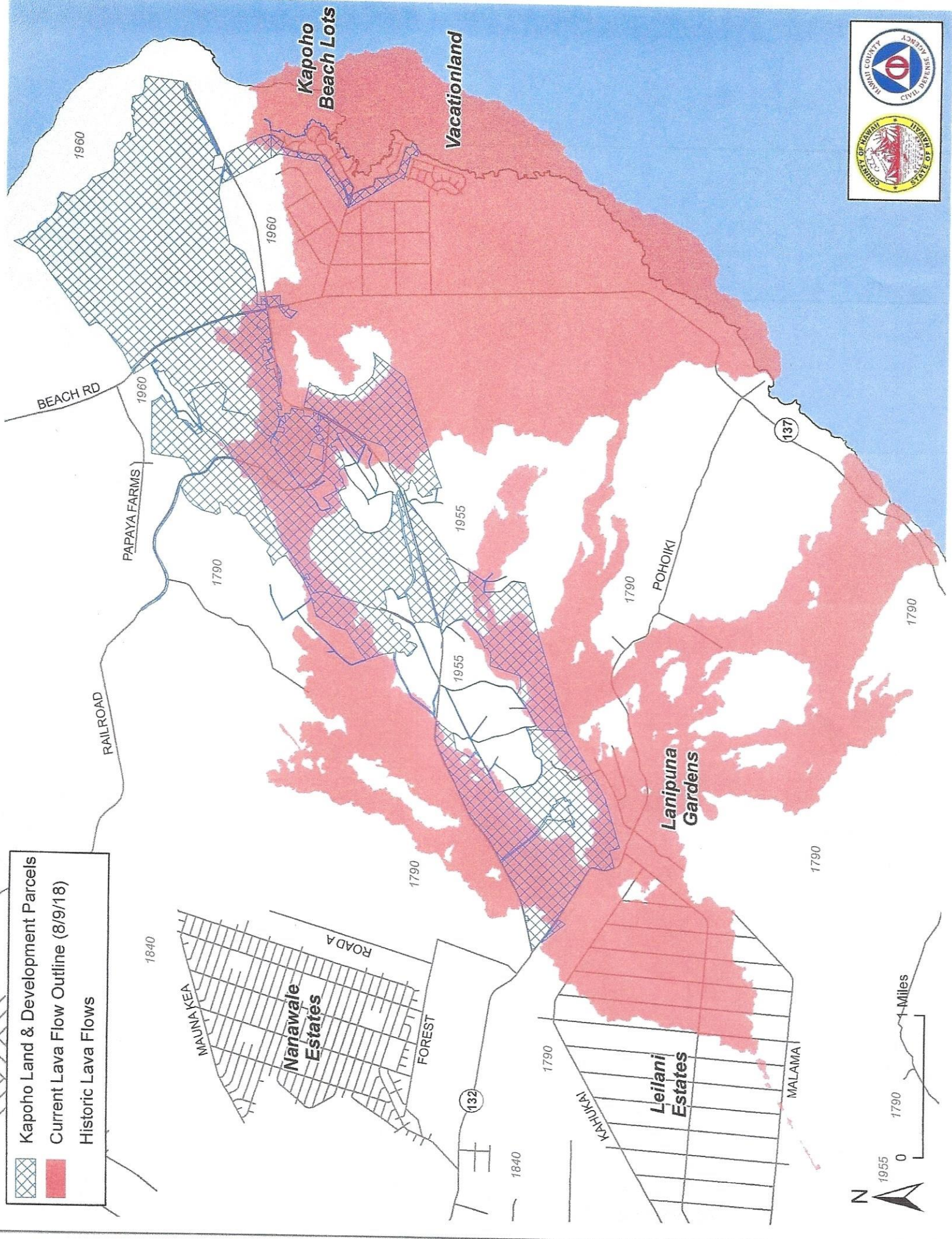
Reopening highway 132 would allow neighbors and agricultural tenants to access lands that are presently encircled by lava from the 2018 Kilauea Lower East Rift Zone KLERZ eruption. Now that we are in a recovery phase, we are in discussions with our rancher and farmers to return and are working with our farmers so they can get access, via Highway 132, to papaya and noni fields that are currently "lava-locked." We have explored the alternative of going through private lands and have concluded that the most straightforward solution is to have highway 132 reopened along the existing alignment.

During the eruption, and in the vicinity of the flow, we had papaya farmers who asked to expand their acreage, and we allowed them to do so without seeking any compensation from them. During the eruption, our rancher immediately moved their cattle to pasturage in Kau, however due to ash fallout from Kilauea Crater they were forced to move again.

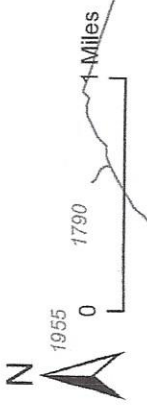
Mahalo a nui loa,

A handwritten signature in black ink, consisting of several overlapping loops and a long horizontal stroke extending to the right.

A. Lono Lyman, Manager KLP and KLDC President KMC



Kapoho Land & Development Parcels
Current Lava Flow Outline (8/9/18)
Historic Lava Flows



HB-1180-HD-1

Submitted on: 2/16/2019 7:09:56 PM

Testimony for FIN on 2/21/2019 12:30:00 PM

Submitted By	Organization	Testifier Position	Present at Hearing
Jennifer Zelko	Individual	Support	No

Comments:

Please vote in favor of HB 1180. The funds provided by this Bill will provide relief, recovery, mitigation, and remediation assistance for disaster damage, losses, and suffering caused by the Kilauea eruption in the County of Hawaii.

Thank you for your support of our Hawaii Island community.

Thank you,

Jennifer Zelko-Schlueter

HB-1180-HD-1

Submitted on: 2/17/2019 5:47:02 PM

Testimony for FIN on 2/21/2019 12:30:00 PM

Submitted By	Organization	Testifier Position	Present at Hearing
Nancy Seifers	Individual	Support	No

Comments:

Aloha...please support this bill. Yet, the funds should be directed to the areas and taxpayers who endured the disaster...not spread about Hawaii island to areas that were not affected! Residents of Puna do not want to relocate or farm in areas other than their homesteads that stand unaffected, yet are lava locked and isolated. Please direct some of this major money to road recovery!...Mahalo

HB-1180-HD-1

Submitted on: 2/18/2019 9:32:24 AM

Testimony for FIN on 2/21/2019 12:30:00 PM

Submitted By	Organization	Testifier Position	Present at Hearing
Lisa Roach	Individual	Support	No

Comments:

HB-1180-HD-1

Submitted on: 2/18/2019 10:11:55 AM

Testimony for FIN on 2/21/2019 12:30:00 PM

Submitted By	Organization	Testifier Position	Present at Hearing
James Morlock	Individual	Support	No

Comments:

We own property in Kapoho Beach Lots where we lived full time for 30 years. The fruit trees and gardens we planted in our younger years were helping sustain us in our retirement, until the lava flow covered the entire community. We support all efforts to help this area recover. Although our property is buried in lava now, many of our friends and neighbors still have homes and farms that are currently inaccessible. These homes and properties have helped sustain and support them physically and emotionally and they need to get back to them and to support the economy of the Big Island.

We, ourselves, are now completely displaced, and we cannot even go to see our home of 30 years without a road restored into the area. We are hoping that this bill will pass and we will eventually be able to go down there to enjoy that wonderful climate and the new coastline and dream about how we or our heirs will be able to use our property.

HB-1180-HD-1

Submitted on: 2/18/2019 1:20:56 PM

Testimony for FIN on 2/21/2019 12:30:00 PM

Submitted By	Organization	Testifier Position	Present at Hearing
Mine Teague	Individual	Support	No

Comments:

This is an extremely crucial bill. Us, Puna residents, are suffering greatly. Please put this on the front burner.

Mine Teague

HB-1180-HD-1

Submitted on: 2/18/2019 2:10:40 PM

Testimony for FIN on 2/21/2019 12:30:00 PM

Submitted By	Organization	Testifier Position	Present at Hearing
M. Eileen O'Hara	Individual	Support	No

Comments:

Aloha Esteemed Finance Committee Chair Luke and Members;

I strongly support this disaster relief package for Hawaii County. As the former Hawaii County Council Member for Lower Puna that was devastated by the recent volcanic eruption, this assistance is desperately needed to restore roads and rebuild other critical public infrastructure so Puna can recover economically. Prior to the eruption, the three biggest economic drivers in Puna were its fishery at Pohoiki, agriculture (primarily papaya, orchids and cattle), and tourism in the form of short term vacation rentals. One thing that needs to be understood is that a good percentage of the structures lost were short term vacation rentals (STVR), thus the impact on, and need for, housing has been overstated by Hawaii County. Furthermore, the STVRs provided good paying income for many residents who no longer have those jobs and recovery of the industry has been severely hampered by the grandfathering based STVR ordinance recently adopted by the Hawaii County. Thus, we turn to fishery and agriculture to help recovery and for that assistance we need roads and a functioning boat ramp.

HB1180 Draft 1 makes substantive and reasonable changes over the original bill. Housing is NOT the primary need for recovery. We have many vacant homes in the Puna subdivisions that have absorbed many who lost homes, and we have ~40,000 subdivided and buildable lots between Upper and Lower Puna. Funding is needed to help road recovery so that people can access their homes now isolated by lava, and to provide assistance in recovering our agriculture and fishery. We need economic opportunities to replace the jobs lost due to the demise of the STVR industry in Lower Puna. We need mechanisms to support tourism such that local shops and restaurants can remain open. We've lost 40% of the clientele because even though the lava event attracts tourists, we have no lava viewing site or accommodations in the area to take in those tourist dollars.

People, by and large, prefer to remain in Puna. Many are self-sufficient, others retired, and some, like myself, work from home. We have no interest in moving to Waikaloa, Kohala or even Keaau which is on the boundary of Puna with S. Hilo. I'm working with the affected communities to conduct a survey of homeowners of the worst hit area of Lower Puna - Kapoho Beach Lots and Vacationland - where only a dozen properties of the 516 parcels were not completely inundated with lava. While that survey is still in progress, there have been sufficient responses to meet a 90% confidence interval with

10% variance. Over 80% of the respondents want to have Hwy 132 and portions of Hwy 137 restored to have access to their properties. This response acknowledges that the residents will have to restore their own private road network and they are overwhelmingly expressing a willingness to pay for that restoration.

Another result of the loss of public roadways is that one of our largest providers of cinder, Kapoho Cinder Pits, is still operative but trucks now must traverse a 10' wide, 4-mile long corridor known as the Government Beach Road, then roll over a narrow private road to reach a substandard County road built with no paved shoulders. Currently, 50-60 thirty-yard cinder trucks, each weighing in excess 65,000 lbs., traverses this route M-S which takes it six miles through the large residential neighborhood of Hawaiian Beaches/Shores consisting of 6,500 residents. Not only is this a serious public safety issue as the trucks do NOT maintain the 15, 25, and 35mph zones along this new "commercial truck" access route, the extra time it now takes to access the Cinder Pits is passed on to customers in much higher prices for loads of cinder at a time when we're trying to recover.

Please pass this measure and if there can be any language added to ensure these funds are spent on actual recovery projects and not used to fund a wish list of projects that might be of some benefit, but not directly related to recovery, please amend. As it reads now, it appears that the language is much more on track to accomplish the task than the previous version.

Again, thank you for your consideration and please support this measure.

M. Eileen O'Hara, Ph.D.

Resource Economist

(808) 896-1902

HB-1180-HD-1

Submitted on: 2/19/2019 10:24:52 AM

Testimony for FIN on 2/21/2019 12:30:00 PM

Submitted By	Organization	Testifier Position	Present at Hearing
Paul Normann	Individual	Support	No

Comments:

There is still much work to be done to help the Puna Community in Hawaii County recover from the impacts of the Kilauea eruption. The community itself has dug deep into its own resources to help those directly impacted but it is not enough. Please support this HB1180 HD1 and support Puna on the long road of recovery.

HB-1180-HD-1

Submitted on: 2/20/2019 9:59:34 AM

Testimony for FIN on 2/21/2019 12:30:00 PM

Submitted By	Organization	Testifier Position	Present at Hearing
Dylan P. Armstrong	Individual	Support	No

Comments:

HB-1180-HD-1

Submitted on: 2/20/2019 11:48:40 AM

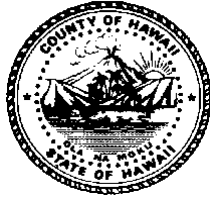
Testimony for FIN on 2/21/2019 12:30:00 PM

Submitted By	Organization	Testifier Position	Present at Hearing
Penny Lee	Individual	Support	No

Comments:

Please support this bill. The road to recovery begins with a "road"! Thank you for your time.

County of Hawai'i
Council District 4 -
Lower Puna



LATE

Office: (808) 961-8265
Fax: (808) 961-8912
ashley.kierkiewicz@hawaiicounty.gov

ASHLEY L. KIERKIEWICZ

HAWAII COUNTY COUNCIL – DISTRICT 4
Chair: Committee on Planning, and Committee on Government Relations & Economic Development
25 Aupuni Street • Hilo, Hawai'i 96720

February 21, 2019

House Committee on Finance

Rep. Sylvia Luke, Chair
Rep. Ty Cullen, Vice-Chair

**RE: Support for HB1180, HD1
relating Natural Disasters**

Aloha, Representatives:

As Chair of the Committee on Planning, Chair of the Committee on Government Relations and Economic Development for the County of Hawai'i, and as Council Member for Puna, I thank you for the opportunity to write in strong support of HB1180, HD1.

Hawai'i County is truly appreciative of this generous appropriation, which will be used to help our Puna community recover from the 2018 Kīlauea eruption. The amendment to the original measure to include Council oversight ensures collaboration among the Administration, Council and County departments to provide relief and assistance directly to those impacted by eruption events.

I humbly request your support for and passage of HB1180, HD1.

Mahalo nui loa,

Ashley Lehualani Kierkiewicz
Hawai'i County Council, District 4