

DAVID Y. IGE
GOVERNOR OF
HAWAII



DEPT. COMM. NO. 70

SUZANNE D. CASE
CHAIRPERSON
BOARD OF LAND AND NATURAL RESOURCES
COMMISSION ON WATER RESOURCE MANAGEMENT

ROBERT K. MASUDA
FIRST DEPUTY

JEFFREY T. PEARSON, P.E.
DEPUTY DIRECTOR - WATER

AQUATIC RESOURCES
BOATING AND OCEAN RECREATION
BUREAU OF CONVEYANCES
COMMISSION ON WATER RESOURCE MANAGEMENT
CONSERVATION AND COASTAL LANDS
CONSERVATION AND RESOURCES ENFORCEMENT
ENGINEERING
FORESTRY AND WILDLIFE
HISTORIC PRESERVATION
KAHOOLAWE ISLAND RESERVE COMMISSION
LAND
STATE PARKS

**STATE OF HAWAII
DEPARTMENT OF LAND AND NATURAL RESOURCES**

POST OFFICE BOX 621
HONOLULU, HAWAII 96809

December 5, 2018

The Honorable Ronald D. Kouchi,
President
and Members of the Senate
Thirtieth State Legislature
State Capitol, Room 409
Honolulu, Hawaii 96813

The Honorable Scott K. Saiki, Speaker
and Members of the House of
Representatives
Thirtieth State Legislature
State Capitol, Room 431
Honolulu, Hawaii 96813

Dear President Kouchi, Speaker Saiki, and Members of the Legislature:

For your information and consideration, I am transmitting a copy of the Relating To The Wildlife Revolving Fund report, as required by Section 183D-10.5, Hawaii Revised Statutes (HRS). In accordance with Section 93-16, HRS, a copy of this report has been transmitted to the Legislative Reference Bureau and the report may be viewed electronically at <http://dlnr.hawaii.gov/reports/>.

Sincerely,

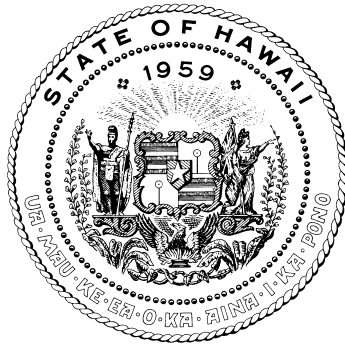
A handwritten signature in blue ink, appearing to read "Suzanne D. Case".

SUZANNE D. CASE
Chairperson

Enclosure

**REPORT TO THE THIRTIETH LEGISLATURE
STATE OF HAWAII
2019 REGULAR SESSION**

RELATING TO THE WILDLIFE REVOLVING FUND



Prepared by

**THE STATE OF HAWAII
DEPARTMENT OF LAND AND NATURAL RESOURCES**

In response to Section 183D-10.5, Hawai'i Revised Statutes

Honolulu, Hawai'i
December 2018

**RELATING TO THE WILDLIFE REVOLVING FUND
FISCAL YEAR 2018**

PURPOSE

The goal of the Wildlife Revolving Fund (WRF) is to provide funds to manage and enhance public hunting opportunities in Hawai‘i. Act 290, Session Laws of Hawai‘i 1991, amended Section 183D-10.5, Hawai‘i Revised Statutes (HRS), by adding a requirement for an annual report to be prepared by the Department of Land and Natural Resources (Department) on the status of the WRF and transmitted to the Legislature no later than twenty days prior to each regular session. The report is to include:

1. The source and application of monies deposited into the fund, including a description of the criteria and process used to determine funding priorities;
2. A description of programs and activities supported by the fund;
3. A summary of program highlights and accomplishments; and
4. A description of future program plans, including specific goals and objectives.

FUNDS

Section 183D-10.5(b), HRS, provides that the following proceeds shall be retained by or transmitted to the Department for deposit in the WRF: fees for hunting licenses, game bird farmer and Commercial Hunting Preserve licenses and fees, hunting guide licenses, hunter education training programs and use of public target ranges, fines collected for hunting or wildlife law violations, bail forfeitures, sale of articles required before hunting, and related works of art. For Fiscal Year 2018 (FY 18), the major source of revenue was hunting license sales followed by the sale of game tags. Sources of revenues are detailed below:

Revenue meet the Department’s authorized budget ceiling for the WRF of \$639,671.00. New expenditures totaled \$298,629.72. The cash balance at the end of FY 18 amounted to \$728,047.87, with outstanding encumbrances of \$99,737.06. Revenues have gradually increased in the Wildlife Revolving fund throughout the 2018 fiscal year due to an increase in the number of non-resident hunters in the state of Hawai‘i and an increase in number of licenses and game tags sold.

Status of S-343

| | |
|--|----------------|
| Beginning Cash Balance of Fund on July 1, 2018 | \$210,685.17 |
| Revenues during FY 2018 | \$649,217.50 |
| Cash Transfer from FY17 | \$166,774.92 |
| Expenditures during FY 2018 | - \$298,629.72 |
| Cash Balance as of June 30, 2018 | \$728,047.87 |
| Unpaid encumbrances as of June 30, 2018 | -\$99,737.06 |
| Unencumbered Cash for carryover as of 06/30/2018 | \$628,310.81 |

Summary of Revenues FY 2018

| | |
|-----------------------------------|---------------------|
| Hunting Guide License and Lottery | \$3,960.00 |
| Game bird Farmers | \$6,350.00 |
| Hunting license with Cons | \$314,788.00 |
| Fees, Wildlife Conservation Stamp | \$2,265.00 |
| Game bird Stamps | \$42,525.00 |
| Sales of Game Tags | \$277,043.00 |
| Interest | \$2,286.50 |
| Total Revenue for FY 2018 | \$649,217.50 |

Summary of Expenditures FY 2018

| | |
|---------------------------|---------------------|
| Personnel | \$186,941.98 |
| Operations | \$82,503.99 |
| Indirect Cost | \$29,183.75 |
| Total Expenditures | \$298,629.72 |

Summary of Outstanding Claims FY 2018

| | |
|--|--------------------|
| Operations Claims | \$125,096.23 |
| Amount expended | \$25,359.17 |
| Total remaining balance of outstanding claims | \$99,737.06 |

FUNDING PRIORITIES

The WRF has been an important portion of the overall budget to meet obligations of state match and operating and salary expenses for game and wildlife projects. Because the major sources of revenue for the WRF come from direct charges to hunters, priority is given to expenditures which benefit this user group. A formal hunting rule change has been conducted and was approved in May of 2015 therefore the sale of stamps, game tags, and application fees may be assessed to hunters by species, area, and season chosen to hunt.

In budgeting for the WRF, a policy of allotting at least 85% of the budget for the hunting program has been in place and followed. Up to 15% of the budget may be used for nongame and wildlife sanctuary management, for projects that may have dual benefits to game species and nongame species.

Section 183D-10.5(e), HRS, also requires that the state first use WRF monies to "maximize the state's participation to secure federal funds under the Pittman-Robertson

Federal Aid in Wildlife Restoration Act.” Consequently, a priority was given to those expenditures that provided the state match for Pittman-Robertson (PR) projects.

The allocation of operating funds to the Division of Forestry and Wildlife’s (DOFAW’s) Branch Offices was done on a lump sum basis to be used on eligible projects.

With the increase in hunting fee revenue, the funding available for salaries has increased and two additional positions have been funded. The operating funds were allotted to the Branches based on the respective Branch wildlife program size and complexity, and amount of revenue generated from license fees.

PROCESS USED

1. The Department’s Fiscal Office and DOFAW coordinated to determine the amount of the Fund available for allocation to DOFAW’s Branch Offices.
2. At the beginning of each fiscal year, a portion of the WRF budget is allocated to each DOFAW Branch Office and to Honolulu Administrative Staff for Statewide projects. A portion of the funds are allocated for temporary personnel to maintain wildlife program functions, and to pay budgeted add-on salary costs to assist with wildlife projects.
3. Each Branch Office collaborates in the development of the overall annual WRF budget, to benefit the resources and resource users, all within the criteria of compliance with the purpose of the WRF and the necessity to provide state-match requirements for PR projects.
4. An emphasis was placed on using WRF for essential expenditures to provide support for public hunting opportunities.
5. All expenditures are identified and coded as "WILDLIFE REVOLVING FUND: S-18-343" to facilitate tracking and accountability.
6. Expenditures complied with approved categories of expenditures for WRF as established by The Board of Land and Natural Resources on August 13, 1993 (see Attachment I, appended).

HUNTING LICENSE SALES OVERVIEW

Overall, Hawai‘i hunting license sales and sale of non-resident licenses have shown a steady increase since 2005 and 2009, respectively (Figure 1 and 2). Since this combined revenue is earmarked in the WRF and used to benefit game management and hunting programs, it suggests that hunter recruitment, hunter retention, and hunting tourism programs be actively promoted.

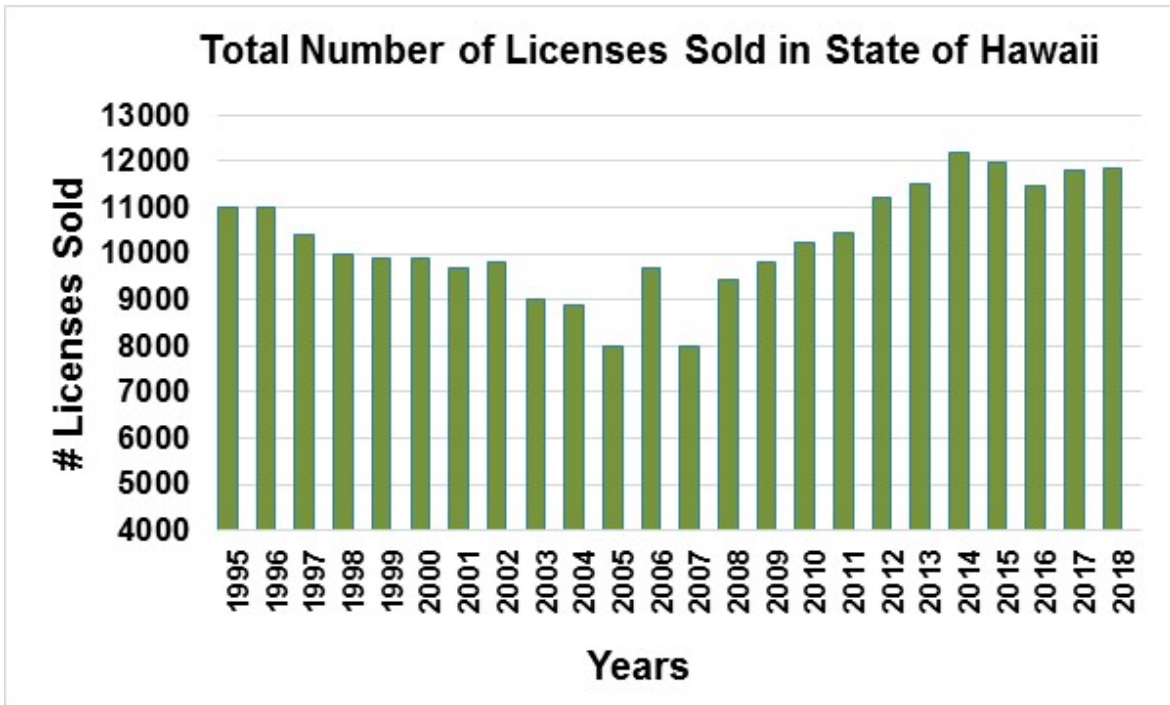


Figure 1. The total number of hunting licenses sold in the State of Hawai‘i per fiscal year (1995 – 2018).

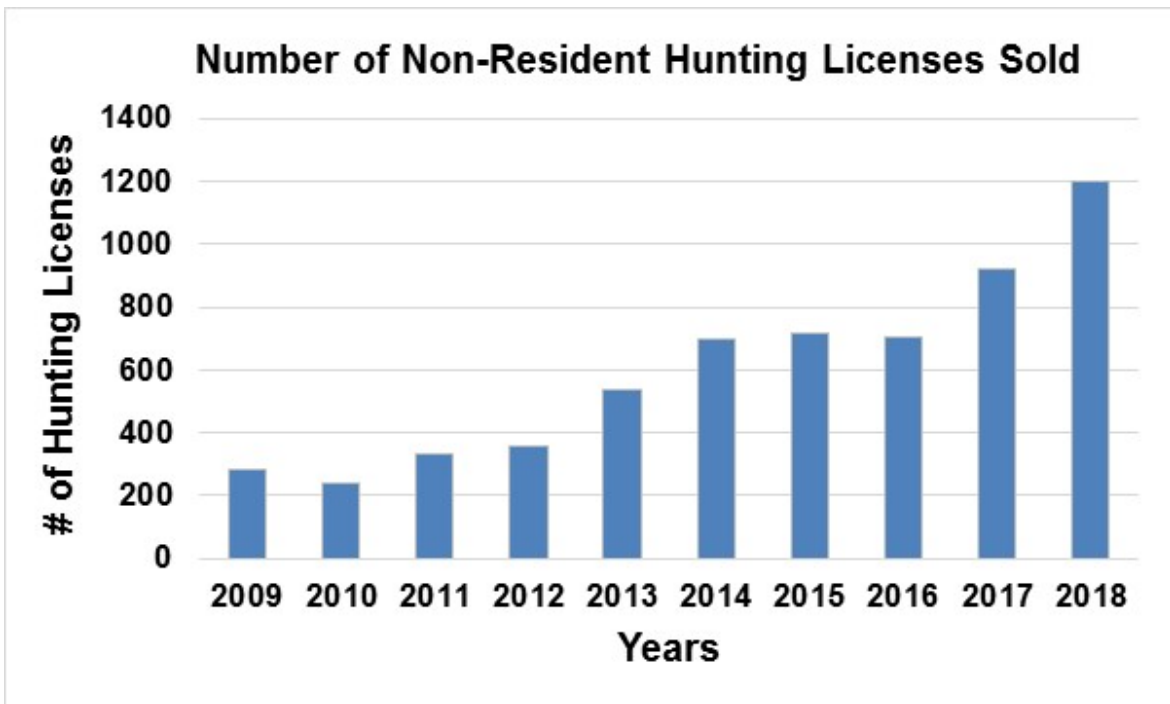


Figure 2. The total number of non-resident hunting licenses sold per fiscal year (2009 – 2018).

A large number of licensed hunters are residents of Hawai‘i Island, followed by O‘ahu, Kaua‘i and Maui (Figure 3). Even though many licensed hunters are residents of Hawai‘i Island, these numbers seem to be decreasing in the past four years. Moreover, it is important to note that hunters from any island may be hunting on neighboring islands where they do not reside. For instance, even though number of licensed resident hunters on Lāna‘i is low, many hunters from neighboring islands hunt on Lāna‘i.

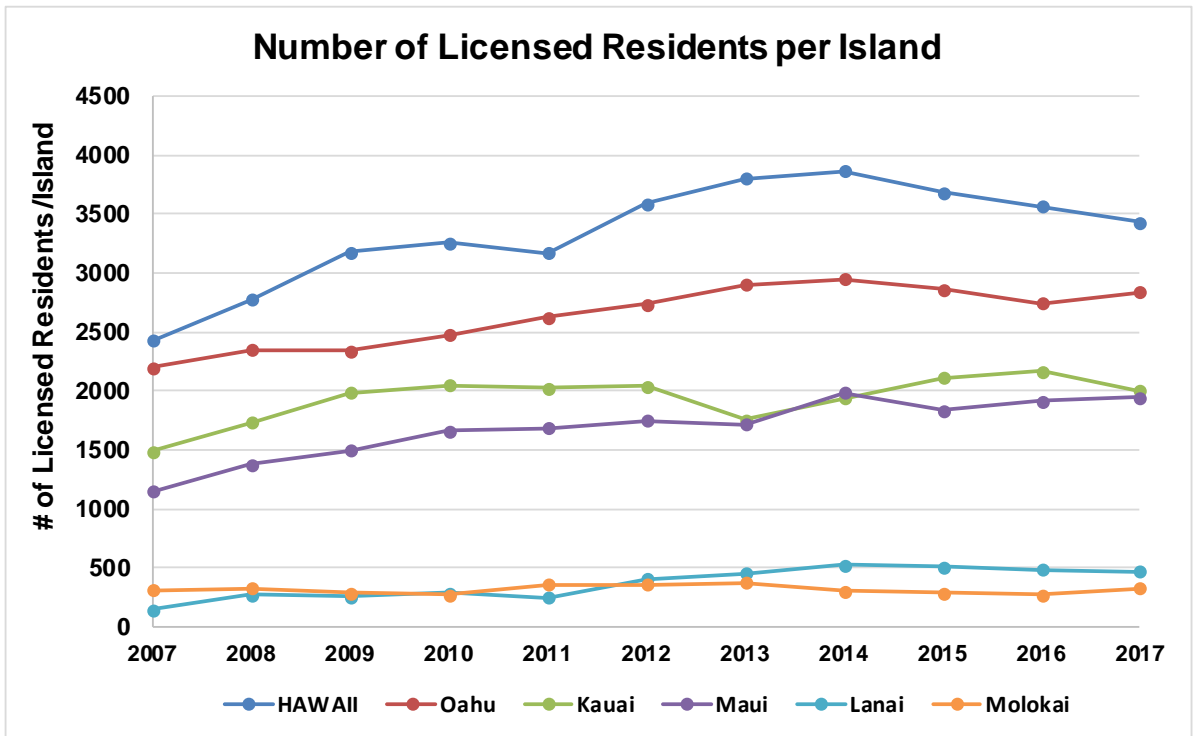


Figure 3. The total number of residents with a hunting license per island for fiscal years 2007 – 2017.

Interestingly, even though most licensed hunters are men (90%) versus women (10%), the number of women hunting license holders have been increasing over the past decade whereas the number of men hunting license holders are decreasing (Figure 4).

DOFAW established a \$10 Wildlife Conservation Stamp in 2015, and made it an integral and mandatory part of the general hunting license, effectively increasing the resident license fee purchase price to \$20 (non-resident \$105). Hawai‘i Administrative Rule 13-122-5.1 granted the department authority to “establish fees for wildlife stamps, application fees, and tags” insofar as the fee set for each stamp, fee, or tag does not exceed the cost of a hunting license (\$10). Hence a sharp increase in revenues was observed in fiscal year 2016 (Figure 5). For the current fee schedule for hunting licenses, wildlife conservation stamps, applications, permits, and tags for special lottery or hunts (see Table 2).

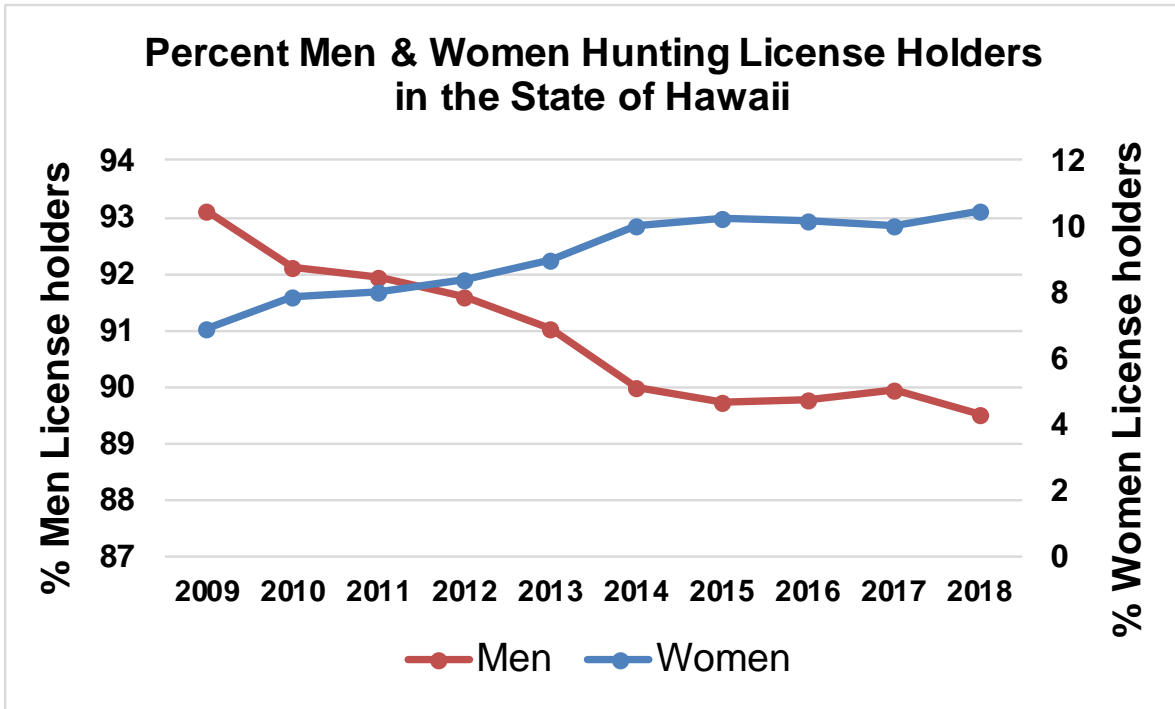


Figure 4. Percent men and women license holders in the State of Hawai‘i for fiscal year 2009 – 2018.

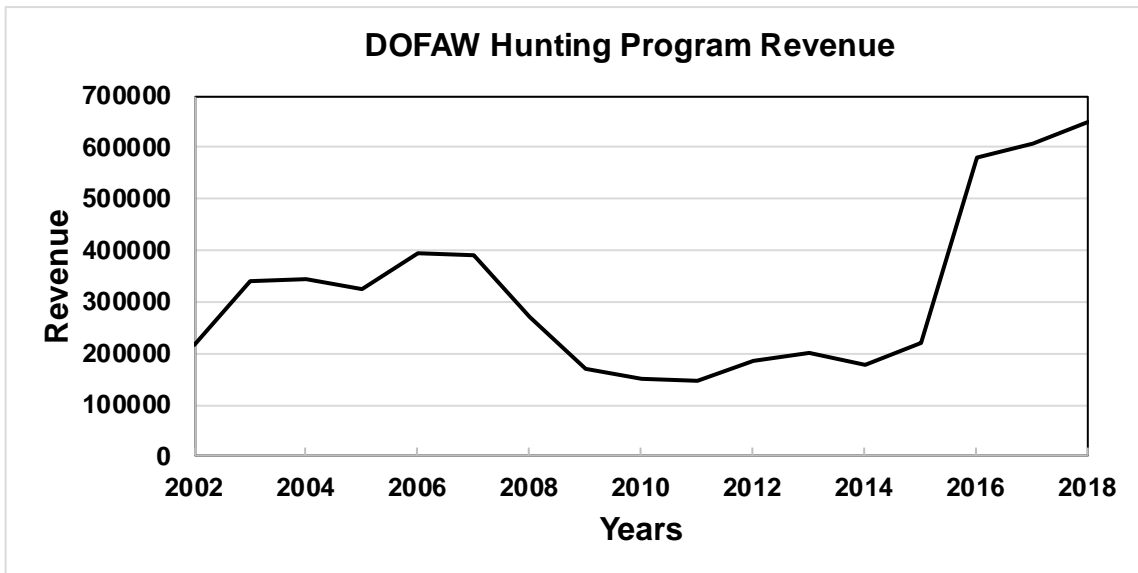
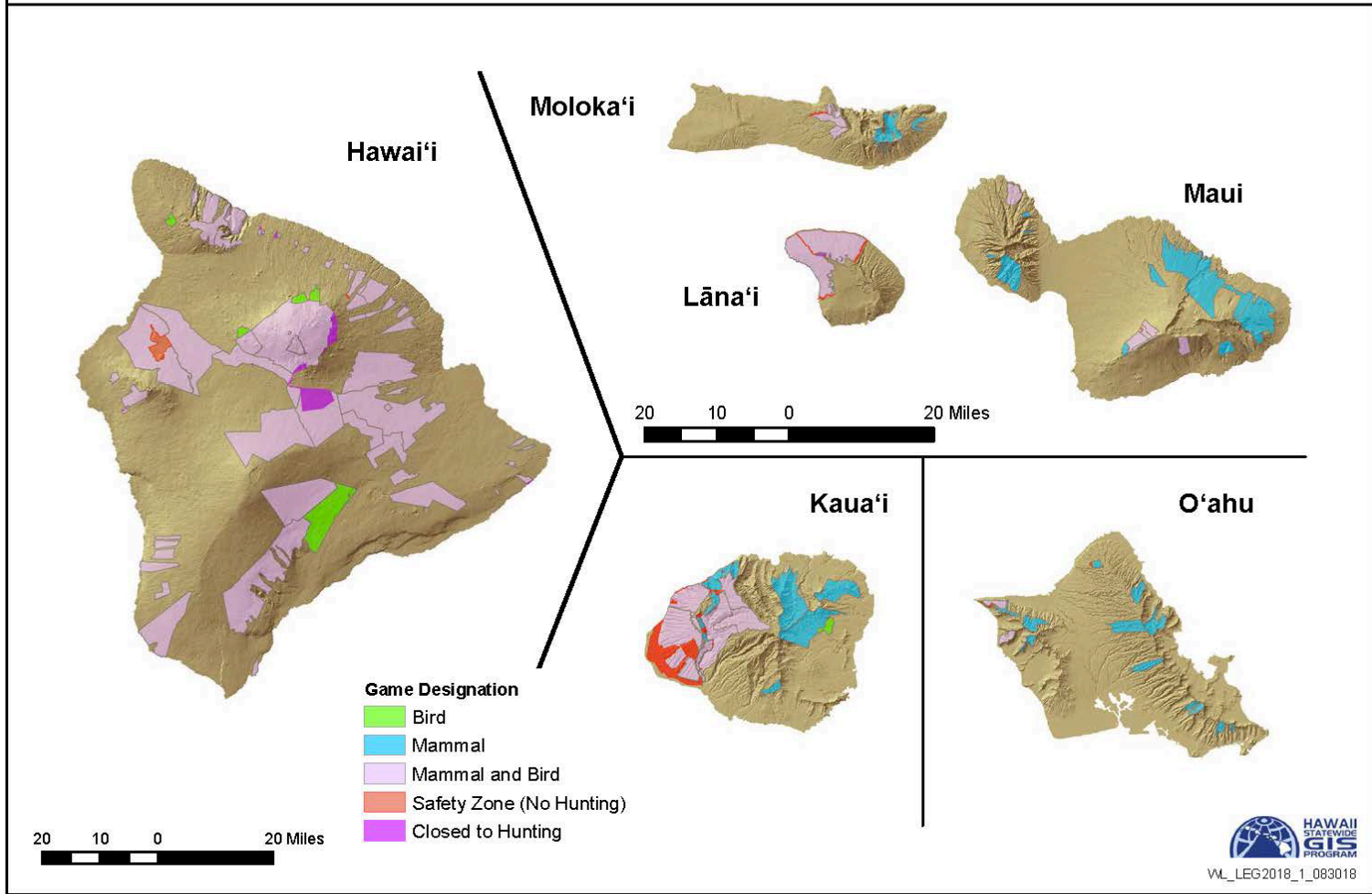


Figure 5. Revenue derived from the Wildlife Revolving Fund for fiscal year 2002 – 2018.

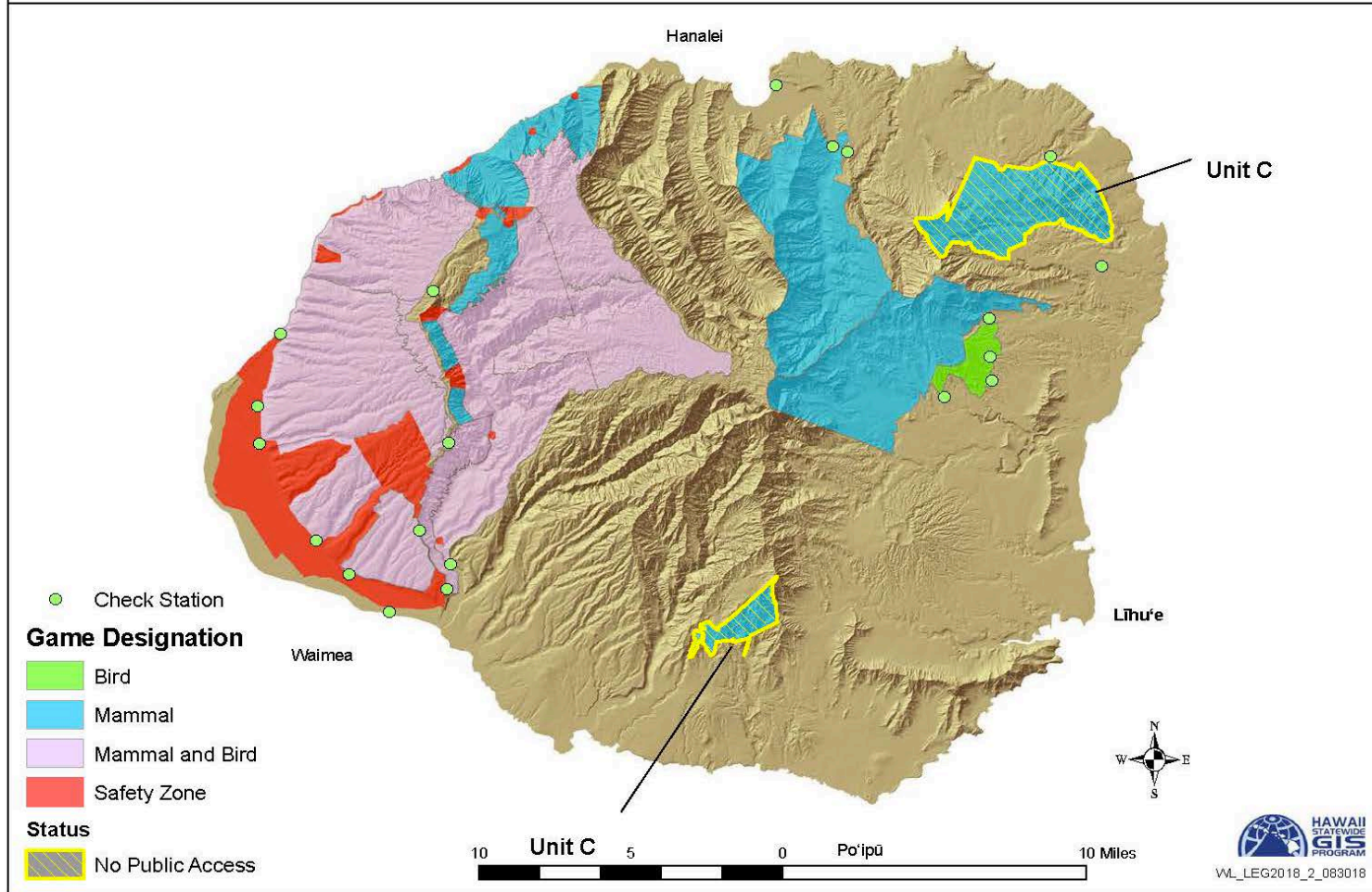


Hunting Areas Statewide FY 2018





Kaua'i Hunting Areas FY 18



PROGRAM HIGHLIGHTS, ACCOMPLISHMENTS AND FUTURE PLANS

KAUA‘I BRANCH

Hunting Season Management

Objectives: Provide hunting information to the public and other districts through announcements and news releases. Manage public hunting seasons in compliance with Chapter 13-122 Hawai‘i Administrative Rules, regulating game bird hunting and Chapter 13-123 Hawai‘i Administrative Rules regulating game mammal hunting.

Accomplishments: Wildlife Revolving Funds (WRF) were used to purchase U.S Postal Service bulk stamps to mail game tags and permits to public hunters. Miscellaneous office supplies were purchased using WRF to operate the public hunting seasons. Bulk fuel was also purchased to operate six game trucks to manage 12 public hunting units on Kaua‘i. The game trucks (6) and tractors (4) were also maintained and repaired when needed.

Commission on Hunting License Sales

Objective: To pay the Kaua‘i hunting license vendors for their commission on the sale of the 2017-18 Hawai‘i Hunting Licenses.

Accomplishments: Hunting licenses were available and sold to Kaua‘i license vendors.

Game Bird Release Project

Objectives: Manage and operate the pheasant release project in the Kekaha Game Management Area (KGMA).

Accomplishments: WRF monies were used to purchase and raise 700-day old ring-necked pheasant chicks to be released in the KGMA. The project involved raising the birds for the first two and a half months of age and releasing them throughout the hunting area.

Game Operations and Maintenance

Objectives: Maintain and expand the capacity to manage water units, fences, hunter checking stations, and other infrastructure necessary for hunting. Improve game operations and maintenance through additional field staffing, adequate equipment and supplies.

Accomplishments: WRF monies were used to upkeep the 13 hunter public check stations on Kaua‘i. WRF monies were expended on printing hunting information and maps. Game auto-feeders were maintained and operated through the summer and fall season and deactivated one month prior to the open season in November. A total of 30 game bird water guzzlers were in operation and were maintained in the KGMA. Bulk diesel fuel was purchased to operate medium and heavy equipment for game management purposes. This equipment was also maintained and repaired when needed. Lastly, WRF monies were used to pay for utility bills such as electric, water, and telephones.

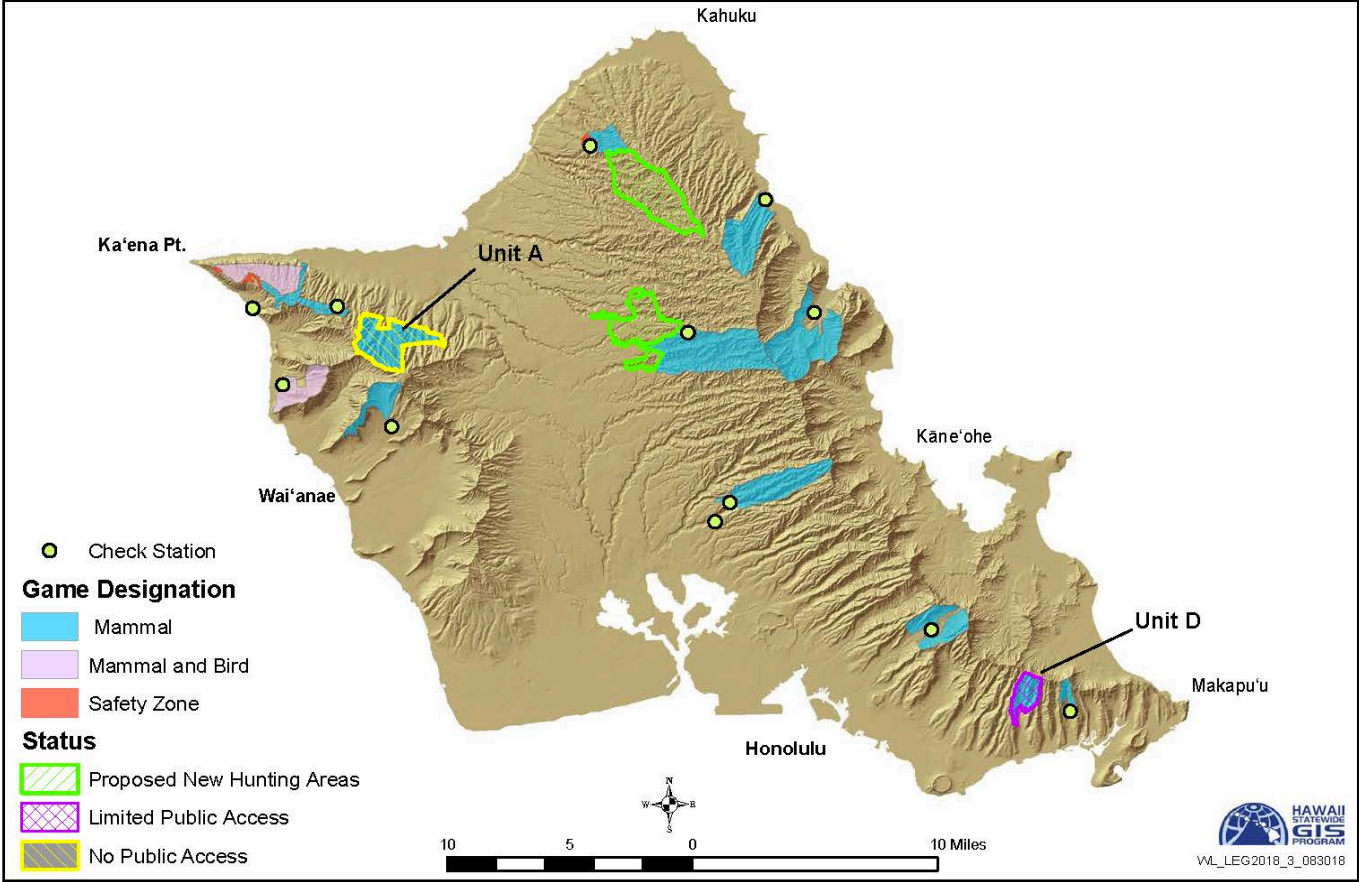
Total WRF Expenditure for Kaua‘i District: Operating \$13,394.76/Personnel \$55,308.81

Future Program Plans

1. Provide for the administrative costs, such as printing and publishing of game tags, permits, announcements of hunting seasons and additions of new hunting areas. - \$5,000 (100% WRF)
2. Incremental development of the proposed Hanahanapuni public shooting/archery range \$20,000 (50% WRF)
3. Continue the artificial game bird release project in the KGMA. Expand on the game bird release project in Hunting Unit I (Wailua GMA) and Unit L (Waimea Heights). Plan, design, and purchase building materials, equipment and supplies for the complete construction of a game bird rearing facility - \$30,000 (100% WRF)
4. Maintain game vehicles and equipment to manage and operate the Kaua'i hunting program. \$30,000 (50% WRF)
5. Purchase of construction materials and supplies to maintain existing game management facilities, including fences, gates, water units, feeding sites, restrooms, storage buildings, and hunter checking stations. \$30,000 (50% WRF)
6. Provide air logistical support to conducts surveys, operations and maintenance of the Kaua'i game management program. \$20,000 (50% WRF)
7. Provide new hunter access routes to several hunting units. Procure to hire a consultant to assist DOFAW on the Environmental Assessment. \$60,000 (50% WRF).



O'ahu Hunting Areas FY 18



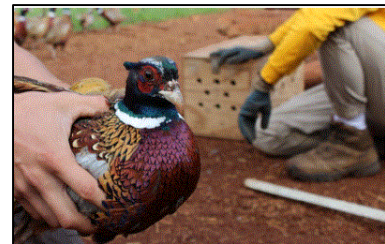
O‘AHU BRANCH

Game Management on O‘ahu

Objectives: To maintain and enhance wildlife habitat and facilities on O‘ahu public hunting areas (PHA’s), GMA’s, and wildlife sanctuaries; and to improve game bird and game mammal hunting opportunities on O‘ahu.

Accomplishments: Funding was used to provide gamebirds and manage habitat for gamebird hunting on O‘ahu. For specific activities see as follows:

- Staff funded and assigned to manage, assist, and oversee on the ground operations. Staff was assigned to manage propagation, release and oversee volunteers. Staff also assisted with special permit to allow for ungulate control/hunting opportunities in Forest Reserves.
- Constructed brooding and fly pens for Ring-Necked Pheasant Propagation Project. Three water feeders were build and perimeter fence with electric wiring was constructed.
- A total of 263 birds (211 Ring-necked 52 Melanistic Mutant (Blue)), reared and released in the Kuaokala Game Management Area. This work was done with assistance from many volunteers (6,864 Volunteer hours) from July 2017 to January 2018.
- Spread approximately 3,000 lbs of gamebird feed (scratch and Broiler Finisher) to supplement bird releases and feed captive birds.
- PHA and GMA informational signs were replaced. New signage provided information regarding new hunting rules and updated maps.



Photos: Staff and volunteers reared and released birds in GMA.

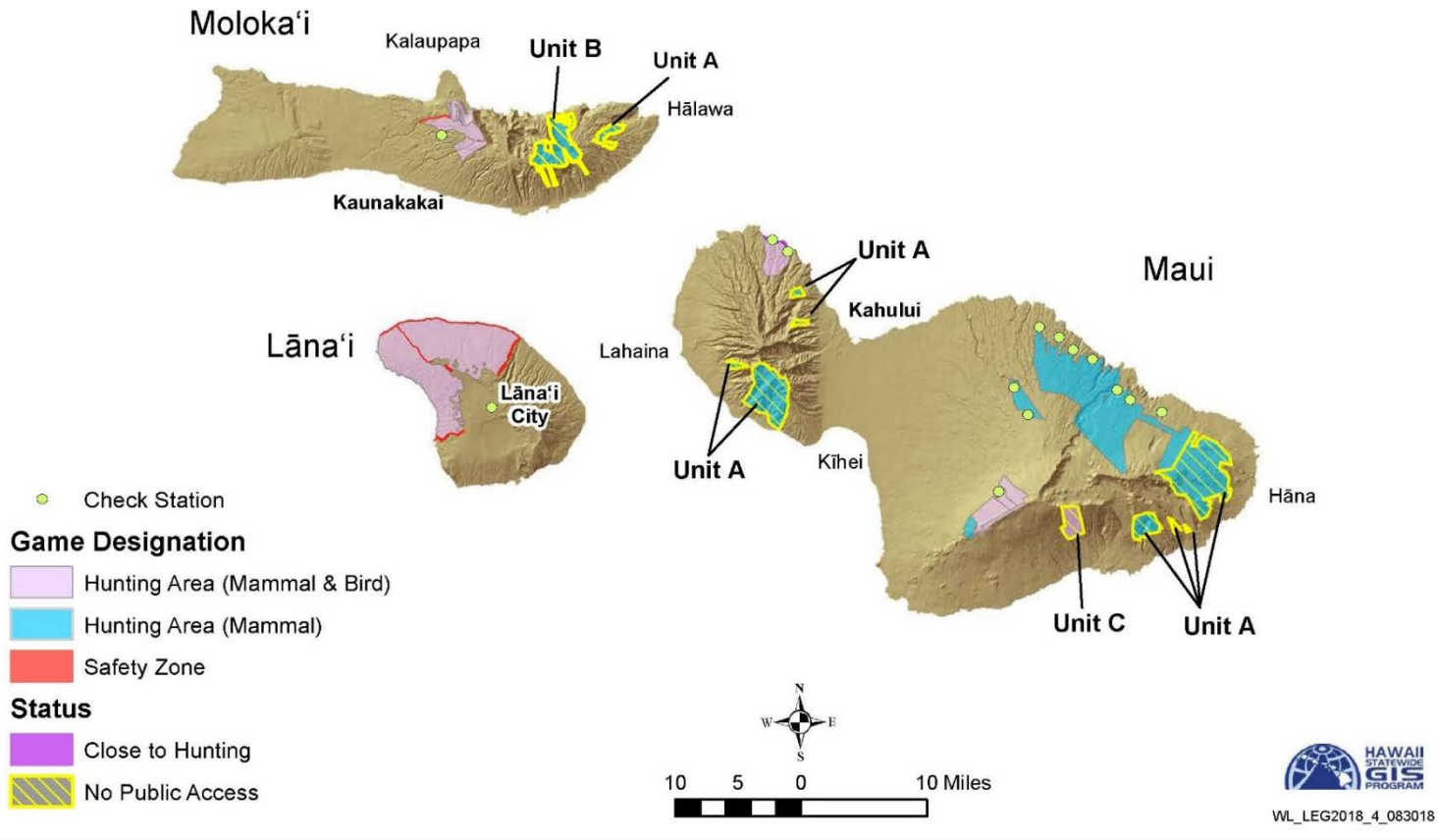
Total WRF Expenditure for O‘ahu District: Operating \$12,918.97/Personnel \$7,194.72

Future Program Plans

1. Propagate gamebirds for release in GMAs for gamebird season 2018-19.
2. Establish and fund a fulltime Wildlife Technician position.
3. Establish and fund full-time Wildlife Equipment Operator/Forestry Worker II Position.
4. Continue to work with volunteers to supplement staff time/resources.
5. Purchase feed to enhance game bird hunting at the Kuaokala Game Management Area.
6. Work with goat hunting interest groups and Game Management Advisory Commission to develop a hunting management plan for Makua-Keaau.



Maui, Molokai, and Lanai Hunting Areas FY 18



MAUI BRANCH

Lease of Cooperative Game Management Area - Lāna‘i

Objective: Provide 30,000 acres of land on Lāna‘i for sport hunting and wildlife management.

Accomplishment: The annual lease rental for the Lāna‘i Cooperative Game Management Area was paid via WRF monies. This area provided hunters the opportunity to pursue Axis Deer, Mouflon Sheep, and a variety of game birds.

Game Mammal Aerial Survey - Lāna‘i

Objective: Annual game mammal surveys of the Lāna‘i CGMA and private portions of Lāna‘i Island. Surveys conducted on the state managed portion of Lāna‘i are used in part for setting upcoming bag limits. Staff from Maui led the survey effort for both the fall and spring surveys. Associated costs for the spring survey only included staff travel. The population levels of Axis deer and Mouflon sheep are for the fall survey only.

Accomplishments: An aerial survey of the Lāna‘i CGMA and the Pulama Lāna‘i hunting area was conducted on August 31 and September 1, 2017. The spring survey was conducted on March 27-28, 2018. Four (4) staff members from the district of Maui traveled to Lāna‘i to lead the survey efforts.

Within the Lāna‘i CGMA, a total of 961 Axis deer were counted on the fall survey resulting in an estimated population of 2,585 animals. 381 Mouflon sheep were counted, bringing the estimated population to 1,025 animals.

Within the Pulama Lāna‘i hunting area, a total of 701 Axis deer were counted, bringing the estimated population to 1,886 animals. 151 Mouflon sheep were counted on the fall survey, resulting in an estimated population of 406 animals.

Personnel Expenses

Objective: A Forestry and Wildlife Worker II position is needed on Lāna‘i to assist the Lāna‘i Forestry and Wildlife Technician with the upkeep and maintenance of 30 miles of water unit pipeline, 25 water units, a multitude of signs and 54 miles of access roads in the Cooperative Game Management Area. The Forestry/Wildlife worker II also assists with habitat management, game bird and game mammal surveys, enclosure maintenance, and predator control. Hunting activities and hunter check in on Lāna‘i occurs after normal operating hours. Overtime is paid to the Lāna‘i technician to accommodate hunters.

Accomplishment: Funding for the Forestry and Wildlife Worker II position is funded through the Wildlife Revolving Fund. This position allows facilities and field operations on Lāna‘i to be properly maintained, serviced and free of any major problems. Overtime for both the Mouflon and Axis deer hunts was approved, allowing check in of hunters to be completed in a timely manner.

Management of the Lottery Hunts - Lāna‘i

Objective 1: The processing and printing of documents for the Axis deer and Mouflon sheep hunts on Lāna‘i. Shipment of instruction sheets and applications for the two hunts to the outer districts. Cost associated with online applications for both hunts are a recent addition to managing the hunts. A conference room is needed to conduct and accommodate the public for the Axis deer and Mouflon sheep lottery. Due to staff shortages on Maui, personnel from the outer districts were requested to assist in both lotteries.

Accomplishment: Application cards, instruction sheets, and addendums were printed and distributed to all districts and lotteries conducted. Approximately 40% of applicants applied online for both hunts, resulting in service fees being paid to the contractor of the online program. A conference room was rented to conduct and accommodate the public for the Axis deer and Mouflon sheep lottery. Staff from the outer districts assisted in the conducting of the lottery for both hunts.

Objective 2: Develop a computer-generated lottery system for the Axis deer and Mouflon hunts that will replace the outdated lottery system currently being used.

Accomplishment: A developer was selected and is in the process of developing a computer-generated lottery.

Game Mammal Facilities O & M – Maui District

Objective: Rental of dumpster(s) during the Axis deer and Mouflon sheep seasons for hunters to dispose of carcasses. Materials required for the hunting program to function needed to be purchased. Provide vehicle maintenance, travel to Lāna‘i for meetings, travel to outer-islands for game related meetings.

Accomplishment: Two dumpsters were rented for each of the two hunts. This provided the hunting community with the facilities to dispose of animal carcasses. Vehicle repairs were charged to this fund, ensuring staff had vehicles available to maintain, repair and complete wildlife projects and facilities. Axis deer tags were purchased during this period. Staff travel to the outer islands to attend game related meetings.

Game Animal Health - Lāna‘i

Objective: Improve the health and well-being of the Axis deer and Mouflon sheep population within the Lāna‘i Cooperative Game Management Area.

Accomplishment: A container of salt blocks was purchased and placed in strategic locations within the Lāna‘i Cooperative Game Management area. The salt blocks will hopefully provide the animals those nutrients that they may need but are lacking in the natural environment.

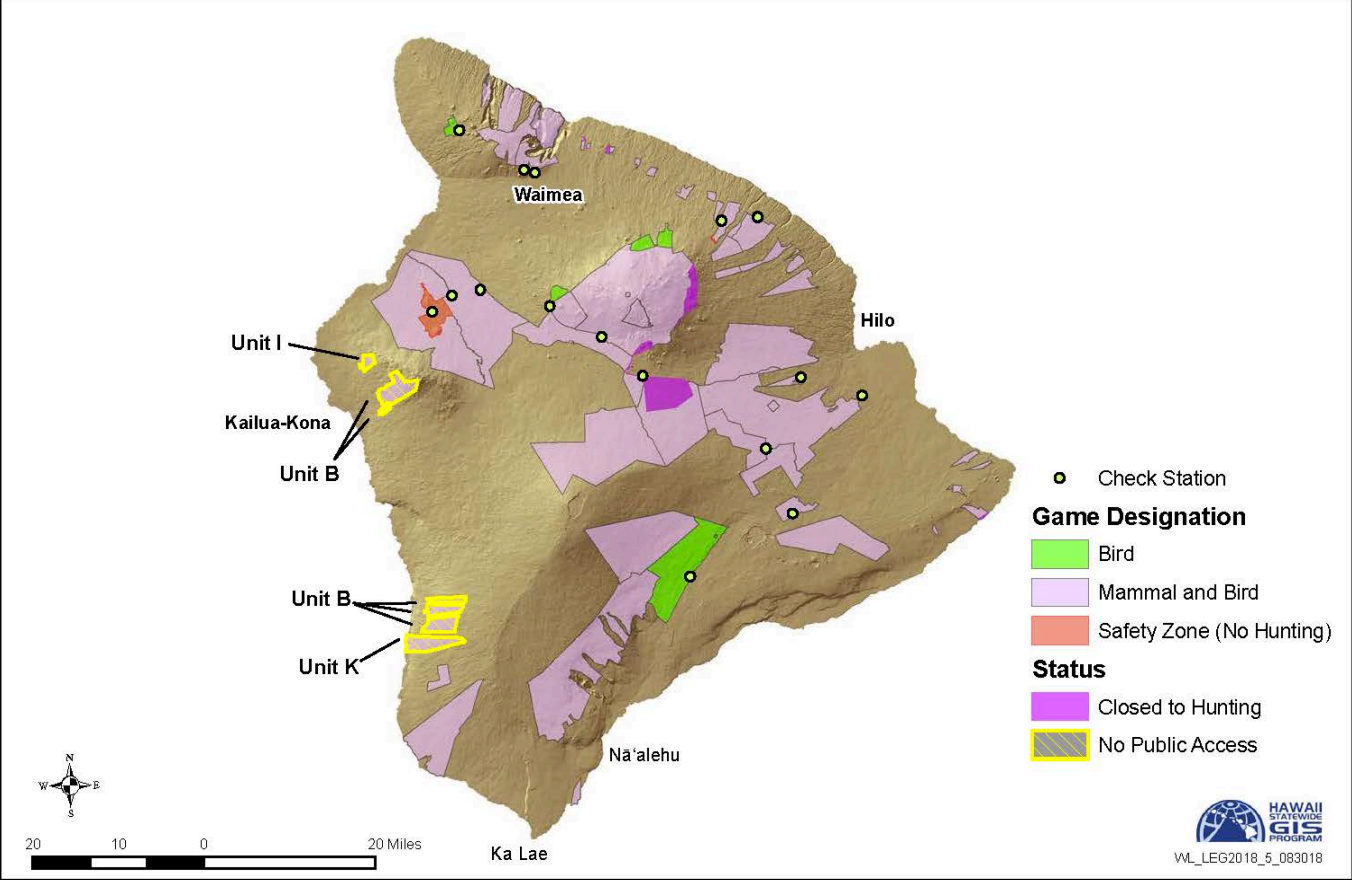
Total WRF Expenditure for Maui District: Operating \$41,004.67/Personnel \$79,871.38.

Current and Future Program Plans

1. Fund Rental of Lease on Lāna‘i - \$35,000.00 (100% WRF)
2. Fund FWW II position on Lāna‘i for facility upkeep and maintenance-\$68,000.00 (100% WRF)
3. Fund Lāna‘i Check Station overtime for FWT V position-\$5,000.00 (100% WRF)
4. Fund game mammal surveys on Lāna‘i -\$15,000.00 (100% WRF)
5. Fund Management of Lottery Hunts on Lāna‘i; document printing, data input and drawings-\$15,000.00 (100% WRF)
6. Develop/update online application system for hunts on the Maui district - \$20,000.00 (100% WRF)
7. Fund game mammal facilities development and O & M on Lāna‘i -\$50,000.00 (100% WRF)
8. Fund clerk position for Lāna‘i Check Station-\$25,000.00 (100% WRF)
9. Habitat remediation/enhancement - \$25,000 (100% WRF)



Hawaii Island Hunting Areas FY 18



WEST HAWAI'I DISTRICT

Game Operations and Maintenance

Objective: Conduct predator control activities, the maintenance of game related facilities such as guzzlers, increase road maintenance and habitat management capacity for the West Hawai'i District while maintaining more than 60 miles of hunter access roads.

Accomplishment: All O & M activities were accomplished without use of WRF monies.

Game Program Coordination

Objective: The district staff assisted Sports Authority, Wal-Mart and other vendors in Kona with hunting license sales and training (these being the only outlets for the public to purchase hunting licenses in Kona other than the DOFAW office 40 miles away in Kamuela).

Accomplishment: The district's secretary assisted with training of vendors in Kailua-Kona store staff in hunting license sales. During anticipated increase in hunting license sales traffic at these establishments, the secretary assisted with license sales and dissemination of information pertinent with upcoming seasons.

Temporary Hire of ½-Time General Laborer

Objective: To assist the districts wildlife staff in the operations and maintenance of projects and to provide predator control at various locations.

Accomplishment: This position has been vacant since June 2017. We are waiting on a start date for the selected candidate. No charge to WRF was accrued for this activity.

Motor Vehicle Repairs, Maintenance, and Equipment

Objective: To maintain trucks in service for WRF purposes.

Accomplishment: Vehicles remained functional with no debts to WRF for maintenance.

Total WRF Expenditure for West Hawai'i District: Operating \$1,076.22.

Future Program Plans

1. Restore equipment purchase, vehicle purchase and maintenance, and facilities construction functions from the WRF, as funds accrue from the sale of hunting licenses, stamps, tags and fees. \$35,000 (100% WRF)
2. Provide for the administrative costs, such as printing and publishing of game tags, permits, announcements of hunting seasons and additions of new hunting areas. \$10,000 (100% WRF)
3. Once funding is available, improve game habitat projects in GMAs and appropriate areas by installing water units, food plots and improving cover. \$50,000 (100% WRF)
4. Continue part-time General Laborer I position.
5. Fund a full time Wildlife Biologist III position. \$55,000 (100% WRF)

EAST HAWAI'I DISTRICT

General Laborer Position:

Objectives: Pursue duties pertaining to game/hunting program.

Accomplishments: Half-time general labor position was filled. Work accomplished involved habitat management, predator control, light construction for trapping and facilities maintenance painting up keep, installation of hunter check and shooting area stations.

Commissions on Hunting License Sales:

Objective: To maintain a network of hunting license vendors on the island of Hawai'i for sales of the 2017-2018 Hawai'i hunting licenses.

Accomplishment: Hunting licenses were sold at various vendor locations, providing convenience to public hunters.

Mile Marker 16 Shooting Range

Objective: Assist with maintenance and development of Mile Marker 16 range.

Accomplishment: The former public hunting area at Mile Marker 16 on the Saddle Road was formally designated as a public shooting range by the Board of Land and Natural Resources on February 23, 2018.

Mile Marker 16 shooting range was established with the intent of providing a location for the public to improve marksmanship and practice the safe and responsible use of firearms, as taught in Hunter Education classes. The Division of Conservation and Resources Enforcement and DOFAW assisted with maintenance and development of the range.



Photos: DOFAW staff working on building a kiosk at Mile Marker 16 shooting range (left) and the kiosk (right).

Game Operations and Maintenance:

Objective: Conduct predator control activities, the maintenance of game-related facilities such as guzzlers and maintenance of hunter access roads.

Accomplishment: All operations and maintenance activities were accomplished without use of WRF monies. WRF monies were used to pay utility bills, supporting the administrative side of the game program.

Total WRF Expenditure for East Hawai'i District: Operating \$702.00/Personnel \$41,679.27

Future Program Plans

1. Replace boundary and safety zone signs in hunting areas.
2. Weed control and habitat improvements in public hunting areas.
3. Check station, roads, trails and water unit maintenance in public hunting areas.

STATEWIDE ADMINISTRATIVE SEGMENT

Hunting License, Wildlife Conservation Stamp, and Game Bird Stamp Production, Program Sales, and Management:

Objective: To produce and distribute required hunting licenses over the counter and online (electronic license), duplicate licenses, conservation stamps, gamebird stamps, tags and vendor booklets. A portion of the production costs were paid with WRF monies. Manage and monitor the Wildlife Revolving fund throughout the fiscal year to ensure all obligations are met.

Accomplishment: Produced and distributed vendor booklets, hunting licenses, web-based electronic hunting license system training, developed on-line non-resident exemption form, conservation stamps, game bird stamps, tags and duplicate hunting licenses. All hunting related materials for new hunting season were updated for public use.

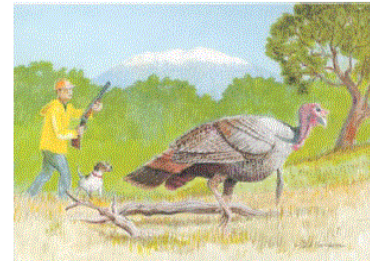
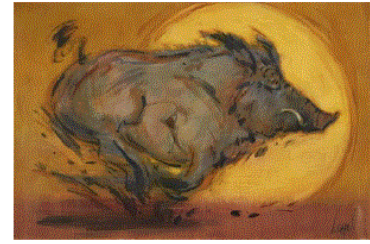
Below are the art work that were submitted to DOFAW as a part of the annual stamp competition and the 2019 winners:



Art Contest Winner- 2019 Conservation Stamp



Art Contest Winner- 2019 Game Bird Stamp



Notification of Hunting Season Openings and Changes:

Objective: Communicate any changes in hunting seasons, and announce new or special hunting opportunities as required by state rules.

Accomplishment: Several legal notices announcing new animal control opportunities for hunters were produced and a series of announcements and news releases were produced for hunting seasons.

Implementation of communication strategies to improve hunter recruitment and retention.

Objective: 1) Write, publish and distribute quarterly informational newsletter; 2) Create a listserv (email list) for all hunting enthusiasts that would like to receive hunting related announcements, updates and newsletter; 3) Update/improve the hunting section of the DOFAW website.

Accomplishment: The quarterly informational newsletter was published in October 2017 and January, March and June 2018. The Go Hunt Hawai‘i newsletter is an informational newsletter to connect hunters and DOFAW resource managers. This newsletter is available online on the DOFAW website.

A listserv was created where all interested parties could sign in with their names and email address and receive up-to-date hunting related news, announcements and our newsletter. There are now over 2,060 people signed up on this mailing list. Signup sheets are also available online (see DOFAW website) and at all district offices and at every hunter education class.

Finally, the hunting page on DOFAW website has been improved. For more information see dlnr.hawaii.gov/recreation/hunting/

JUNE 2018

GO HUNT Hawaii
CONNECTING HUNTERS & RESOURCE MANAGERS

Photo: Calyne Moe

This is the sixth edition of Go Hunt Hawaii, a quarterly newsletter to connect hunters and the Department of Land and Natural Resources (DLNR, Division of Forestry and Wildlife (DOFAW)). Sign up to stay up to date on announcements, changes to hunting areas, research on animal populations and more.

SIGN ME UP

Game Bird Survey at Kapapala GMA

On April 24, 2018, Dr. Javier Cotin and DOFAW biologists Ian Cole, Isiah Reynolds, and Jupiter Crosson began a preliminary game bird survey at Kapapala Cooperative Game Management Area. DOFAW plans to establish an annual game bird survey, and this trial compared two methods of estimating the game bird population on the GMA: transect surveys with only observers, and transect surveys using dogs to help flush out the birds.

The observers surveyed 16 miles of Kapapala Cooperative GMA, which resulted in 109 total detections of 141 birds. 52 of those detections were made without dogs, while 57 detections were made with dogs assisting the observers. Most of the detections occurred in the two hours after sunrise, with 50% of the detections identified by bird calls.

The survey results were similar with and without dogs, which is due to the dense vegetation forcing transects to be along the road. Moving forward, DOFAW plans to increase the number of transects and shorten the survey time to end two hours after sunrise. The next round of surveys is scheduled occur at the end of September 2018, and will cover Kapapala GMA and expand to Mauna Kea GMA.

BY THE NUMBERS
Game harvested by hunters

| Year | Axis Deer, Lana'i | Bearded Turkey, Hawai'i |
|------|-------------------|-------------------------|
| 2015 | 1,286 | 2,220 |
| 2016 | 1,429 | 2,070 |
| 2017 | 1,681 | 2,260 |
| 2018 | 1,431 | 2,283 |

Announcements

HUNTING LICENSE SALES

DLNR WILL ISSUE NEW HUNTING LICENSES AND STAMPS FOR THE NEW HUNTING SEASON

Effective June 18, 2018, the DLNR/DOFAW offices will begin issuing hunting licenses and stamps for the new hunting season (July 1, 2018 through June 30, 2019). A valid hunting license is required for hunting on public and private lands.

Hunters may also purchase their hunting licenses and stamps by credit card via the State of Hawaii website at <http://www.dlnr.hawaii.gov/hunting/license/>.

LANA'I

MOUFLON SEASON STARTS

The Mouflon Sheep season starts on the last Saturday in July with archery hunts for 8 consecutive days, followed by a youth hunt weekend.

For season length, bag limits, and other information for all hunts, please see [Title 13, Chapter 122, Rules Regulating Game Manual Hunting](http://Title_13_Chapter_122_Rules_Regulating_Game_Manual_Hunting/).

GAME MANAGEMENT ADVISORY COMMISSION

The state Game Management Advisory Commission (GMAC) recently held their sixth meeting in Lihua, Kaua'i. The previous meeting was held in Hilo, Hawai'i. The GMAC members act in an advisory capacity for the Board of Land and Natural Resources, which sets policies for the Department.

You can see the agendas and minutes for previous GMAC meetings on the DOFAW website at <http://dlnr.hawaii.gov/recreation/hunting/gmac/>.

GMAC Commission Members

Kaua'i Robert Cremer
Oahu Joshua Jary and Nancy Timko
Maui's Lori Buchanan (Vice Chair)
Lana'i Stan Ruckas
Maui Jeffrey DeRigo
West Hawai'i Jon Sabati (Chair)
East Hawai'i Ryan Kihutani
DLNR Chairperson's designated representative (ex officio voting member) David Smith

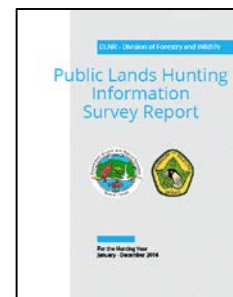
Department of Land and Natural Resources,
Division of Forestry and Wildlife
www.dlnr.hawaii.gov/recreation/hunting

Go Hunt Hawaii 'i Newsletter (June 2018)


Public engagement in game management


Objective: 1) Creation of an annual hunting informational survey to assist in improving management in public hunting areas in the state of Hawai'i.


Accomplishment: An informational survey was created and is available online for hunters. The results of the 2016 are published in a report and it is available online. (see dlnr.hawaii.gov/recreation/hunting/).




Below are some of the highlights from the survey.


 **Most hunters supplement meals with game** — 45% supplement for up to 9 meals a month, and 37% for 9 to 30 meals a month.

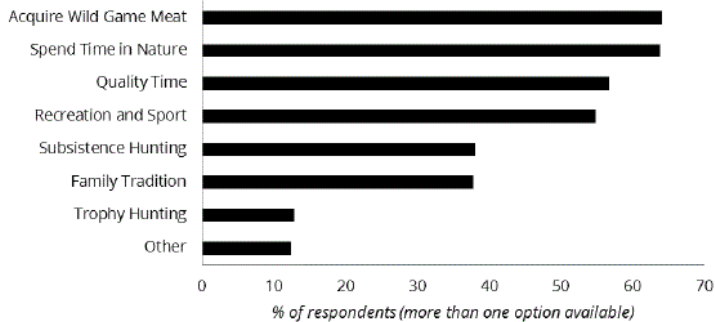
 **Top three most utilized hunting units** — Pu'u Wa'a Wa'a and Pu'u Anahulu Forest Reserves (Hawai'i), Unit 2 and Unit 1 (Lana'i).

 **Most hunters had hunted on public lands** — (87%), with 48% hunting game mammals, 35% gamebirds and mammals, and 4% gamebirds only.

 **Most valued potential improvements to the hunting program** — Acquisition of more hunting areas, better access to public hunting areas, and an increase in the number of days for hunting game mammals.

 **More than half of hunters had hunted on private lands** — (58%), with an average of 22 days per year.

 **Reasons for hunting** — (see graph below)



Hunting license sales coordination

Objective: The clerical staff assisted vendors such as Walmart and Island archer with hunting license sales, payments and collection of funds.

Accomplishment: During anticipated increase in hunting license sales traffic at these establishments, the clerical staff assisted with license sales and dissemination of information pertinent with upcoming seasons.

Total WRF Expenditure for Administration: Operating \$13,407.37/Personnel \$2,887.80

Future Program Plans

1. Produce and distribute hunting licenses, stamps, and vendor booklets.
2. Utilize revenue from the sale of hunting tags, stamps, and fees to support the statewide game program.
3. Publish notification of game bird and game mammal hunting season announcements and Go Hunt Hawai'i newsletter.
4. Maintain existing leases, licenses, and other access agreements that provide hunter access to non-DOFAW controlled hunting lands.
5. Acquire fee title or access easements for lands that provide opportunities for public hunting, public recreation, and wildlife management.

Wildlife Revolving Fund Expenditures

Table 1. Operating, personnel, claims and contract per district. The numbers between the parenthesis show the amount of the claim that has already been expended and is included in the operating costs.

| Oahu Administration | Expenditures & Claims | Maui | Expenditures & Claims |
|---------------------|-----------------------|--------------|----------------------------|
| Operating | \$ 13,407.37 | Operating | \$ 8,401.06 |
| Personnel | \$ 2,887.80 | Personnel | \$ 7,561.82 |
| Claims | \$ 12,458.16 | Claims | \$ 25,092.31 |
| Contracts | \$ - | Contracts | \$ - |
| Total | \$ 28,753.33 | Total | \$ 41,055.19 |
| Oahu | | | |
| Operating | \$ 12,918.97 | Operating | \$ 35.50 |
| Personnel | \$ 7,194.72 | Personnel | \$ - |
| Claims | \$ 45,000.00 | Claims | \$ - |
| Contracts | \$ - | Contracts | \$ - |
| Total | \$ 65,113.69 | Total | \$ 35.50 |
| West Hawaii | | | |
| Operating | \$ 1,076.22 | Operating | \$ 32,568.11 |
| Personnel | \$ - | Personnel | \$ 72,309.56 |
| Claims | \$ - | Claims | \$ 40,351.33 (\$25,359.17) |
| Contracts | \$ - | Contracts | \$ - |
| Total | \$ 1,076.22 | Total | \$ 104,877.67 |
| East Hawaii | | | |
| Operating | \$ 702.00 | Operating | \$ 13,394.76 |
| Personnel | \$ 41,679.27 | Personnel | \$ 55,308.81 |
| Claims | \$ - | Claims | \$ 2,194.43 |
| Contracts | \$ - | Contracts | \$ - |
| Total | \$ 42,381.27 | Total | \$ 70,898.00 |

Table 2. Fee schedule for hunting licenses, wildlife conservation stamps, applications, permits, and tags for special lottery or hunts.

| Island | Item | Resident | Non-resident |
|-----------------------|--|-----------------|---------------------|
| All islands statewide | Hunting License* | \$10 | \$95 |
| | Wildlife Conservation Stamp | \$10 | \$10 |
| | Game bird Stamp | \$10 | \$10 |
| | Spring Turkey Tags | \$5 | \$20 |
| Kaua‘i | Black Tailed Deer Hunts Rifle Tag Application | \$5 | \$5 |
| | Rifle Tag | \$10 | \$25 |
| | Muzzleloader Permit Tag | \$5 | \$25 |
| | Archery Permit Tag | \$5 | \$25 |
| | Feral Goat Hunts Rifle Lottery Tag Application (Unit B) | \$5 | \$10 |
| | Rifle Lottery Tags (Unit B) | \$10 | \$25 |
| | Muzzleloader Permit Tags (Unit A & F) | \$10 | \$25 |
| | Annual Archery Permit (Unit G, F & K) | \$5 | \$25 |
| | Feral Pig Hunts Season Permit | \$5 | \$25 |
| | Special Hunts Application | \$5 | \$5 |
| | Goat/Deer/Pig Permit (Unit E & H) | \$10 | \$25 |
| | Goat/Pig Animal Control (Unit G) | \$10 | \$25 |
| Lāna‘i | Mouflon sheep season lottery Application | \$10 | \$10 |
| | Mouflon sheep season tag | \$20 | \$125 |
| | Axis Deer season lottery application | \$10 | \$10 |
| | Axis Deer season tag | \$20 | \$125 |
| Hawai‘i | PuuWaawaa feral sheep or goat tag | \$10 | \$25 |
| | Puuanahulu feral sheep or goat tag | \$10 | \$25 |

*Free to all Hawai‘i residents 65 years or older and to all persons with Hansen’s disease who are residents of Kalaupapa, Molokai

**ATTACHMENT I: WILDLIFE REVOLVING FUND EXPENDITURE
CATEGORIES**

1. Development, improvement and management of existing and new public hunting and game management facilities including installing or maintaining hunter access roads, checking stations, fences, gates, stiles, cattle guards, entry/safety/boundary signs and markers, parking lots, sanitary facilities, water tanks, and campsites.
2. Sanctuary facilities including fences, moats water control structures, pumps, ditches, nesting sites, holding pens, boardwalks, viewing kiosks, water devices, parking lots, sanitary facilities and entry and interpretive signs.
3. Wildlife habitat improvements including game bird and mammal watering units, food plots, vegetation clearing and mowing, non-game/endangered species enclosures, exclosures, noxious weed control, mowing and nest sites; and wildlife predator control, water quality testing and rehabilitation.
4. Personnel hires for wildlife management and hunter education including Wildlife Management Assistants and General Laborers (for hunter check station operation, public hunting area management, pest plant control, predator control, habitat development, and posting signs and markers) computer technicians (for public hunting lotteries) and hunter education specialists.
5. Wildlife management equipment including tractors, bulldozers, all-terrain vehicles, collecting arms, radios, outboard motors, small boats, binoculars, trucks and 4-wheel drive vehicles.
6. Development and operation of public shooting ranges in conjunction with the Hunter Education Program.
7. Research, surveys, and inventories for game and non-game endangered species, including rental of helicopters, infrared technology, temporary hires, equipment rental, materials and supplies, and contracts for studies (game birds, forest birds, water birds, seabirds, Hawaiian bat, owls, disease, genetics, food habits, ungulates, limiting factors, etc.)
8. Public education on wildlife management including development of the “Wilderness Watch” program, providing maps and area informational leaflets, interpretative facilities, at game management areas and wildlife sanctuaries, and technical assistance to the public on wildlife management.
9. Rental of land for public hunting and wildlife management.
10. Law enforcement.