



## Application Submittal Checklist

*The following items are required for submittal of the grant application. Please verify and check off that the items have been included in the application packet.*

- X 1) Certificate of Good Standing (If the Applicant is an Organization)
- X 2) Declaration Statement
- X 3) Verify that grant shall be used for a public purpose
- X 4) Background and Summary
- X 5) Service Summary and Outcomes
- X 6) Budget
  - a) Budget request by source of funds ([Link](#))
  - b) Personnel salaries and wages ([Link](#))
  - c) Equipment and motor vehicles ([Link](#))
  - d) Capital project details ([Link](#))
  - e) Government contracts, grants, and grants in aid ([Link](#))
- X 7) Experience and Capability
- X 8) Personnel: Project Organization and Staffing



AUTHORIZED SIGNATURE

RICHARD J. TAAFFE, CEO  
PRINT NAME AND TITLE

1/16/2019  
DATE

**WEST HAWAII COMMUNITY HEALTH CENTER, INC  
FY 2020  
GRANT IN AID REQUEST FOR AN OPERATIONAL GRANT  
KEALAKEKUA, SOUTH KONA**

**INTRODUCTION**

The West Hawaii Community Health Center, Inc (WHCHC) is requesting \$275,000 to expand medical and behavioral health services in South Kona, an area that is hugely underserved and has limited access to medical and behavioral health care. WHCHC already has a small presence in South Kona (Kealakekua) and with these proposed operational funds will be used to expand care by hiring another medical provider and another behavioral health specialist to serve 1,800 low-income individuals who do not have a PCP or currently accessing care. These positions are revenue generating and will be self-sufficient after one year.

**II. BACKGROUND AND SUMMARY**

**1. Applicant's Background**

West Hawaii Community Health Center, Inc (WHCHC) is a community-based, non-profit 501(c)3 organization that opened its door in 2005 to provide affordable health care services (medical, dental, behavioral health) to all residents of West Hawaii regardless of their income. Services are offered to the uninsured using a sliding fee scale based on income and no person is denied service because of their inability to pay. West Hawaii Community Health Center's stated mission is:

*To make quality, comprehensive, and integrated health services accessible to all who pass through our doors regardless of income. These services will be culturally sensitive and will promote community well-being through the practice of "malama pono."*

Since opening its door in 2005, West Hawaii Community Health Center, Inc (WHCHC) has grown significantly in the number of patients served and the number of patient visits. See growth chart below.

	2007	2008	2009	2010	2011	2012	2013	2014	2015	2016	2017	2018
Patients	4,249	6,332	7,078	7,669	9,126	11,620	12,228	12,642	13,612	14,582	15,446	16,100
Visits	10,324	16,651	23,211	29,825	32,956	41,733	46,884	46,586	49,340	58,172	62,614	67,900

From its humble beginning in a single 3 exam room clinic, we currently operate multiple sites—a main health center in Kailua-Kona, another in Kealakehe on Hawaiian Homestead leased land, a third in Waikoloa Village 35 miles north of Kailua Kona, and 3 small clinics in Kealakekua—a keiki dental clinic, a keiki medical clinic and an adult medical clinic. The Kealakekua site is currently being consolidated into a single site to expand services and better serve the South Kona communities of Kealakekua, Captain Cook, Honaunau, Hookena, and Ocean View. This consolidation will be complete in Fall 2019, and **the requested funding will hire two new health care providers so health services can be expanded to underserved residents of South Kona.**

**2. Project Goals and Objectives**

West Hawaii Community Health Center, Inc is proposing to use these funds to hire one medical provider and one behavioral health specialist to meet the unmet health care needs of South Kona residents. Specifically, these two health professionals will provide care to at-least 1,800 of the 2,200 low-income people who currently do not have a PCP and are not receiving care. It is estimated South Kona has a total of 6,600 low-income people, many of who WHCHC currently serves, according to federal data.

**Goal: To increase access to primary medical and behavioral health services to the residents of South Kona by hiring two health professionals (physician assistant/nurse practitioner and a psychologist).**

**Objective:**

1. By 12/1/2019, hire a medical provider (Physician Assistant or Nurse Practitioner) and a behavioral health specialist (Psychologist) to join the WHCHC team serving the resident of South Kona.
2. By 12/31/2020 WHCHC will have provider health care to no less than 1,800 new, previous unseen low-income patients living in the South Kona district.
3. By 12/31/2020, the number of unnecessary ER visits and hospitalizations by South Kona residents will decrease as the result of increased access to care at the WHCHC Kealakekua Health Clinic.

**3. Public Purpose and Need to be Served**

South Kona is largely a medically underserved area. According to federal data, 1 in 3 low-income residents (2,200 of 6,600) do not access primary care services. Local surveys indicate nearly 50% of all South Kona residents do not have a designated PCP. A major reason is lack of medical providers in the South Kona district. The population of the South Kona area is approximately 12,000, so the physician to population ratio is over 1:2000. Health care facilities and providers in the area, not including WHCHC, include the Kona Community Hospital and 5 private primary care and internal medicine physicians, several of whom are at retirement age and expect to close their practices within the next 12-24 months.

Additionally, most health care providers are in North Kona (Kailua Kona) which means the residents of South Kona must travel over 15-20 miles one way to access health care. Given the two-lane road and traffic, travel time is typically 30-40 minutes during non-peak times and as much as 60-90 minutes at peak travel times. So many low-income people do not access care and go to the hospital ER when they need services.

Other demographic data for the area: 36% of South Kona residents have public insurance (Medicaid, Medicare) and 13% are uninsured, 14% live in poverty, and the per capita income is \$30,000 compared to Hawaii \$43,000/capita. 21% of South Kona residents are self-employed, as compared to 13% statewide, which typically means they have no insurance. A higher percentage of South Kona residents are 65+, as compared to other parts of our service area. Bottom line, without access to primary care, the cost of treating these individuals when they are sick rises significantly—a cost that gets transferred to the public through higher premiums and fees and ultimately an increased tax burden

WHCHC is expanding its South Kona facilities, nearly doubling its space, to improve access to care. However, a well-located facility also requires health providers. **This GIA request will add two health providers, a medical provider and a behavioral health provider, to the existing Kealakekua staff. These two health providers will see over 1,800 previous underserved people. A Behavioral Health provider is included in this request due to the high incidence of substance abuse, including opioid-use, in the region. With the addition of these two providers, the WHCHC Kealakekua Center is expected to see a total of 5,300 to 5,500 patients each year.**

**4. Target Population**

Anyone who walks through the doors of a WHCHC health center will be seen regardless of income. Our target population is the low-income, uninsured and underinsured person who has difficulty accessing care. The South Kona Health Center will follow the same protocol. Many people living in the target area



of South Kona have publicly supported health insurance such as Medicaid (50%) or Medicare (30%); while many others are self-employed (21%) which often means limited health coverage.

The typical WHCHC patient accesses care 3.25 times during the year. 80% of patients have incomes less than 200% of the federal poverty level. Majority of patients are Native Hawaiian, Asian, Filipino, Marshallese, Hispanic, or other Pacific Islanders

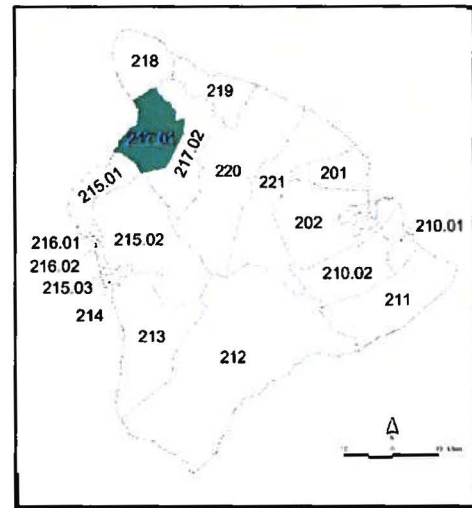
In actual numbers, WHCHC estimates by adding these two providers 1,800 new patients will receive health care by the end of the first full year of operations. This will increase WHCHC's penetration into the area to nearly 45%. Current penetration is approximately 27% and serves about 3,500 people.

## 5. Geographic Service Area

Map: Island of Hawai'i showing census tracts

The Kealakekua Health Clinic service area consists of census tract 213 and 214. Estimated 2017 population is 12,000.

The entire West Hawaii Community Health Center, Inc service area stretches approximately eighty miles along the coast and 6 miles inland with a population of about 70,000 people. All census tracts in the service area have been designated as having a Medically Underserved Population (MUP). It includes the following census tracts:



- 213.00 South Kona
- 215.01 Kalaoa
- 215.03 Kaumalumalu-Kealakekua
- 216.02 Kahuluu-Kaumalumalu
- 214.00 Kealakekua-Captain Cook
- 215.02 Hualalai
- 216.01 Kailua
- 217.01 Kawaihae-Waikoloa

## II. SERVICE SUMMARY AND OUTCOMES

### 1. Scope of Work

This request is for \$275,000 in an operational GIA to hire two health care providers—Medical provider (Nurse Practitioner/PA) and a behavioral health provider (Psychologist)—who will see 1,800 of the 2,200 South Kona residents who currently do not have a PCP and who only access health care through the hospital ER. WHCHC currently serves about 3,500 of the 12,000+ South Kona residents. With the addition of these health care providers, WHCHC will deliver health care to over 5,000 patients at the Kealakekua Center, generating 15,000 patient visits. Majority of individuals served will be low-income, Medicaid and/or uninsured, children and adults who live in census tracts 213 and 214 (South Kona). **Operationally, these positions will be self-sufficient and generate patient revenues adequate to cover all their operating costs. No additional State funds will be required to support the operations of this facility.**

## 2. Project Timeline

Summarized below.

- By 12/31/2019—Two health care providers—medical and behavioral health—will have been hired and will be providing care to patients.
- By 12/31/2020—1,800 new previous underserved patients will have received health care services at the Kealahou Health Center

## 3. Quality Assurance and Evaluation

Over the past 14 years, West Hawaii Community Health Center, Inc has grown from a three exam, 6-person organization to a multi-site, 194 staff organization that serves over 16,000 patients each year. The key to this growth has been stable and experienced leadership, strong planning and management with accountability, and a clear vision of where we were heading. We expect nothing less on this project.

West Hawaii Community Health Center, Inc has established performance improvement plans and processes for all aspects of its clinical operations. Compliance is a major focus and is incorporated into our general operations and includes regular audits of our operations. Quality indicators are identified, and clinical indicators are tracked regularly through our electronic health records and management software. Policies and procedures are in place for personnel, finance and most clinical areas. WHCHC holds itself to the highest standards.

Indicators that the organization monitors for operational performance include:

- Patient Access—panel size, appointment waiting times, cycle time in the clinic;
- Best Practices—patient care outcomes especially for chronic disease;
- Viability—billing, collection, reimbursement, coding compliance;
- Leadership—Overall patient satisfaction, staff satisfaction, employee turn over rate.

## 4. Measure(s) of Effectiveness

- Outcome 1:** WHCHC—Kealahou Health Center will be fully operational and providing health care to 5,000+ patients annually and deliver 15,000 patients visits. The 2 new health providers will see 1,800 of those patients who were previous underserved and without a PCP.
- Outcome 2:** Quality indicators for chronic disease for the Kealahou Center will be comparable to all other Sites operated by WHCHC
- Outcome 3:** Kealahou Center will operate in the black, income exceeding expenses and the two new positions will be self-sufficient.
- Outcome 4:** Results of Kealahou patient survey will be comparable to patient surveys at the other WHCHC centers.

## III. FINANCIAL

1. **Budget forms are attached. Supporting documentation includes the proposed space program which is attached behind the budget sheets.**
2. Below is the anticipated quarterly funding request for the project.

Quarter 1	Quarter 2	Quarter 3	Quarter 4	Total Request
\$50,000	\$75,000	\$75,000	\$75,000	\$275,000

3. The applicant shall provide a listing of all other sources of funding that they are seeking for fiscal year 2020.

WHCHC is not seeking any other source of funding for increasing the number of health care providers serving the South Kona district. If funding is not secured, WHCHC will continue to serve the area with the existing staff and will be unable to expand the number of patients currently seen.

Funding for the general operation of Kealahou Center is included in WHCHC's overall budget.

Funds for operation come from numerous sources:

- 13.5% are federal 330e funds
- 2% from DOH grants and contracts
- 4% from private revenue sources, including donations.
- <1% from County of Hawaii Non-Profit grants
- 80% of operating funds come from patient-generated services in the form of reimbursement from Medicaid, Medicare, commercial insurance and patient co-payments.

4. There are no federal or state tax credits associated with this project.
5. List of federal, state, and County contracts, grants, and grant in aids over the past three years.
  - Federal Grant
    - 330e Community Health Center. Each of the past 3 years
  - State Contracts and GIA received over the past 3 years
    - CIP 2017 capital GIA for renovation of leased space at Kealahou Center
    - DOH: For the past 3 years WHCHC has had the following contracts: Purchase of Service Agreement, Perinatal Support, Breast Cervical Cancer Treatment.
  - County of Hawaii Grant received over the past 3 years
    - Non-Profit Grants for various projects including adult dental services, school-based clinic in Honaunau, homeless outreach care, pharmacy benefit for patients.
6. Unrestricted Current Assets as of 12/31/2016: \$4,031,212

#### **IV. EXPERIENCE AND CAPABILITY**

##### **A. Necessary Skills and Experience**

WHCHC has a strong senior management team with excellent management skills and many years of experience in managing programs as well as construction projects. The key people are:

- Executive Director with 40+ years of managing and developing community-based programs, eighteen of those years running community health centers. He has been WHCHC President/CEO since 2005.
- Finance Director with an MBA in finance and experience in the non-profit as well as private sector for 30+ years. She has been with WHCHC since 2008.
- Operation Director with a MA and HR credentials and 35+ experience in business and non-profit operations and HR. She has been at WHCHC for 8 years.
- Medical Director who is a family physician and grew up in Kona and received her MD from JABSOM. She has been with WHCHC for 4 years.

- Behavioral Health Director who is a psychologist, grew up on Oahu, received her PsyD from Argosy. She has been at WHCHC for 8 years.

The West Hawaii Community Health Center, Inc has been providing medical services continuously since January 2005 and has undergone a two federal compliance reviews, an external management review, as well as annual A-133 independent audits. Passing these audits has demonstrated that WHCHC has the financial, clinical and administrative systems in place, but most importantly, it demonstrated that patients are receiving quality, accessible, affordable health care.

WHCHC currently employs 194 people, that includes 19 medical clinicians (family physicians, pediatricians, family nurse practitioners, physician assistants), 10 behavioral health specialists (psychiatrists, psychologists, clinical social workers), 6 dentists, 3 dental hygienist, 10 RNs as well as case managers, operations, billing, accounting and eligibility staff.

## **B. Facilities**

West Hawaii Community Health Center, Inc (WHCHC) currently has multiple locations at which it provides health care. Each location is described below:

- WHCHC—Kealakekua: Currently WHCHC operate out of three small sites in Kealakekua with a total of 4,000 sq. ft leased space--one clinic is dedicated to keiki dental, another to keiki medical, and the third to adult medical. These three sites are being consolidated into a single larger location in Kealakekua. WHCHC received a state CIP in the amount of \$925,000 toward this renovation. The renovation is expected to be completed in October 2019 and will add 5,000 sq. ft of new space. Existing staff of the other sites will move into the renovated space. This GIA request will support 2 new providers for the Kealakekua Center to new, underserved patients.
- WHCHC—Kailua-Kona Health Center: This is a 9,000 sq. ft leased multi-office facility located in the center of Kailua Kona. WHCHC offers out-patient medical and behavioral health services at this location.
- WHCHC--Waikoloa Health Center This clinic is 3,00 sq. ft leased space located in the Village Market at Waikoloa Village. It offers medical, dental and behavioral health services.
- WHCHC—Kealakehe Health Center This facility is 10,500 sq.ft. located in the Hawaiian homestead area of La`i`Opua. It was constructed in 2015 and offers medical, dental and behavioral health services.

## **V. PERSONNEL—PROJECT ORGANIZATION AND STAFFING**

### **A. Proposed Staffing, Staff Qualifications, Supervision and Training**

When fully operational the Kealakekua Health Center expects to have four medical providers (family physician, pediatrician, two PA/APRN), 2 dentists, and 2 behavioral health specialists, as well as nursing and other support staff such as a care coordinator, case manager, eligibility and outreach workers. This GIA request will fill two of these positions—a medical provider and a behavioral health provider.

Supervision of these staff will fall under the established management structure of the organization, with on-site clinical management given to a site supervisor. WHCHC has regular all staff meetings and weekly



manager meetings. Training is made available to all staff and all new staff is oriented to the organization. Clinical staff also receives two weeks of clinical orientation from the Medical Director and Director of Nursing. In addition, WHCHC management staff (IT, HR, finance, clinical quality, and nursing) will provide necessary supervision and on-going training/support to insure all processes and work flows are standardized throughout the system. This is standard operating practice throughout the organization.

**B. Organizational Chart**

The organization is governed by a Board of Directors, a majority who are users of the clinic's services. The Board has delegated responsibility for day-to-day operations to the President/CEO. The CEO along with the management team oversee all functions of the organization. See the attached organizational chart.

**C. Compensation of top 3 employees**

CEO -- \$218,000; Medical Director MD --\$200,000; Dental Director, DDS --\$200,000

**VI. OTHER**

**A. Litigation**

There is no pending litigation against the West Hawaii Community Health Center or any of the Center's staff.

**B. Licensure or Accreditation**

West Hawaii Community Health Center has all required licenses needed to conduct a medical practice.

**C. Private Educational Institutions**

Not Applicable

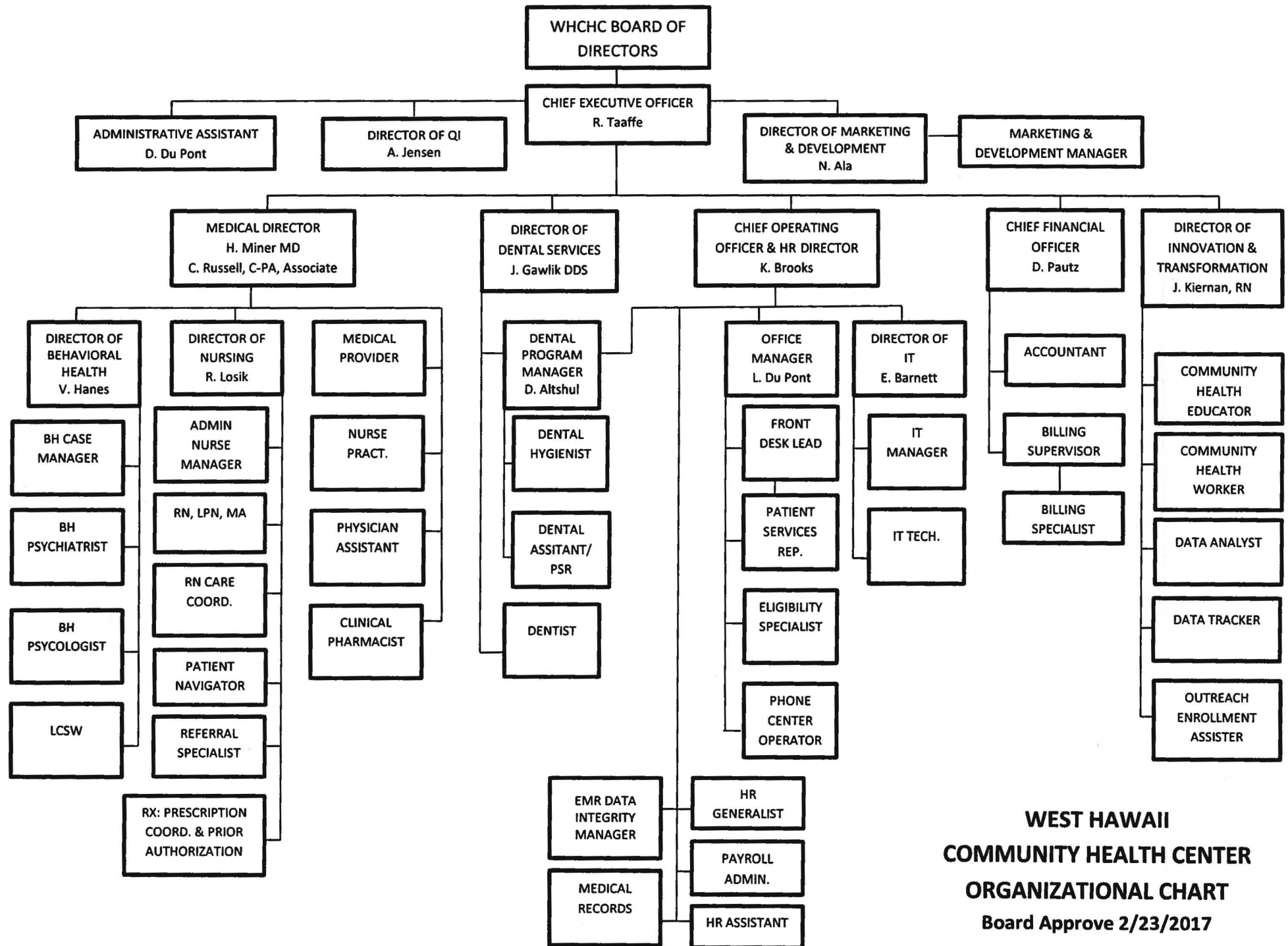
**D. Future Sustainability Plan**

WHCHC will not seek future GIA funding for these positions or for their support staff.

On-going operational funding for the two health care positions will be generated through patient revenues. Since 80% of WHCHC operating support is patient-generated, once the providers are seeing a full panel of patients—usually 6-9 months-- reimbursements from Medicaid, Medicare, and commercial insurance claims will support these positions and the staff who support them, i.e. MA, RN, care coordinators, educators. WHCHC does not have enough financial reserves to support these new positions without external funding. However, once in place and seeing a full panel of patients, the positions will be self funded.

**E. Certificate of Good Standing**

Attached



**WEST HAWAII**  
**COMMUNITY HEALTH CENTER**  
**ORGANIZATIONAL CHART**  
 Board Approve 2/23/2017



**STATE OF HAWAII  
STATE PROCUREMENT OFFICE**

**CERTIFICATE OF VENDOR COMPLIANCE**

This document presents the compliance status of the vendor identified below on the issue date with respect to certificates required from the Hawaii Department of Taxation (DOTAX), the Internal Revenue Service, the Hawaii Department of Labor and Industrial Relations (DLIR), and the Hawaii Department of Commerce and Consumer Affairs

**Vendor Name: WEST HAWAII COMMUNITY HEALTH CENTER, INC**

**DBA/Trade Name: WEST HAWAII COMMUNITY HEALTH CENTER, INC**

**Issue Date: 01/15/2019**

**Status: Compliant**

Hawaii Tax#: 20035118-01  
New Hawaii Tax#: GE148408524801  
FEIN/SSN#: XX-XXX5394  
UI#: XXXXXX8072  
DCCA FILE#: 206368

**Status of Compliance for this Vendor on issue date:**

<b>Form</b>	<b>Department(s)</b>	<b>Status</b>
A-6	Hawaii Department of Taxation	Compliant
	Internal Revenue Service (Compliant for Gov. Contract)	Compliant
COGS	Hawaii Department of Commerce & Consumer Affairs	Exempt
LIR27	Hawaii Department of Labor & Industrial Relations	Compliant

**Status Legend:**

<b>Status</b>	<b>Description</b>
Exempt	The entity is exempt from this requirement
Compliant	The entity is compliant with this requirement or the entity is in agreement with agency and actively working towards compliance
Pending	The entity is compliant with DLIR requirement
Submitted	The entity has applied for the certificate but it is awaiting approval
Not Compliant	The entity is not in compliance with the requirement and should contact the issuing agency for more information

**DECLARATION STATEMENT OF  
APPLICANTS FOR GRANTS PURSUANT TO  
CHAPTER 42F, HAWAII REVISIED STATUTES**

The undersigned authorized representative of the applicant certifies the following:

- 1) The applicant meets and will comply with all of the following standards for the award of grants pursuant to Section 42F-103, Hawaii Revised Statutes:
  - a) Is licensed or accredited, in accordance with federal, state, or county statutes, rules, or ordinances, to conduct the activities or provide the services for which a grant is awarded;
  - b) Complies with all applicable federal and state laws prohibiting discrimination against any person on the basis of race, color, national origin, religion, creed, sex, age, sexual orientation, or disability;
  - c) Agrees not to use state funds for entertainment or lobbying activities; and
  - d) Allows the state agency to which funds for the grant were appropriated for expenditure, legislative committees and their staff, and the auditor full access to their records, reports, files, and other related documents and information for purposes of monitoring, measuring the effectiveness, and ensuring the proper expenditure of the grant.
- 2) If the applicant is an organization, the applicant meets the following requirements pursuant to Section 42F-103, Hawaii Revised Statutes:
  - a) Is incorporated under the laws of the State; and
  - b) Has bylaws or policies that describe the manner in which the activities or services for which a grant is awarded shall be conducted or provided.
- 3) If the applicant is a non-profit organization, it meets the following requirements pursuant to Section 42F-103, Hawaii Revised Statutes:
  - a) Is determined and designated to be a non-profit organization by the Internal Revenue Service; and
  - b) Has a governing board whose members have no material conflict of interest and serve without compensation.

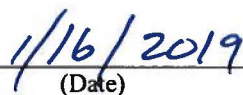
Pursuant to Section 42F-103, Hawaii Revised Statutes, for grants used for the acquisition of land, when the organization discontinues the activities or services on the land acquired for which the grant was awarded and disposes of the land in fee simple or by lease, the organization shall negotiate with the expending agency for a lump sum or installment repayment to the State of the amount of the grant used for the acquisition of the land.

Further, the undersigned authorized representative certifies that this statement is true and correct to the best of the applicant's knowledge.

West Hawaii Community Health Center, Inc

(Typed Name of Individual or Organization)

  
(Signature)  
Richard J. Taaffe, CEO

  
(Date)

(Typed Name)

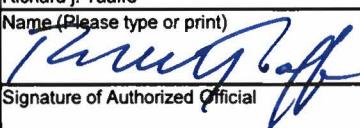
(Title)



## BUDGET REQUEST BY SOURCE OF FUNDS

Period: July 1, 2019 to June 30, 2020

West Hawaii Community Health Center, Inc.

BUDGET CATEGORIES	Total State Funds Requested (a)	Total Federal Funds Requested (b)	Total County Funds Requested (c)	Total Private/Other Funds Requested (d)
<b>A. PERSONNEL COST</b>				
1. Salaries	225,000			
2. Payroll Taxes & Assessments	18,000			
3. Fringe Benefits	32,000			
<b>TOTAL PERSONNEL COST</b>	<b>275,000</b>			
<b>B. OTHER CURRENT EXPENSES</b>				
1. Airfare, Inter-Island				
2. Insurance				
3. Lease/Rental of Equipment				
4. Lease/Rental of Space				
5. Staff Training				
6. Supplies				
7. Telecommunication				
8. Utilities				
9				
10				
11				
12				
13				
14				
15				
16				
17				
18				
19				
20				
<b>TOTAL OTHER CURRENT EXPENSES</b>				
<b>C. EQUIPMENT PURCHASES</b>				
<b>D. MOTOR VEHICLE PURCHASES</b>				
<b>E. CAPITAL</b>				
<b>TOTAL (A+B+C+D+E)</b>	<b>275,000</b>			
<b>SOURCES OF FUNDING</b>		Budget Prepared By:		
(a) Total State Funds Requested	275,000	Richard J. Taaffe	808-326-3878	
(b) Total Federal Funds Requested	0	Name (Please type or print)	Phone	
(c) Total County Funds Requested	0		1/16/2019	
(d) Total Private/Other Funds Requested	0	Signature of Authorized Official	Date	
<b>TOTAL BUDGET</b>	<b>275,000</b>	Richard J. Taaffe, CEO Name and Title (Please type or print)		



## BUDGET JUSTIFICATION - EQUIPMENT AND MOTOR VEHICLES

Period: July 1, 2019 to June 30, 2020

Applicant: West Hawaii Community Health Center,

DESCRIPTION EQUIPMENT	NO. OF ITEMS	COST PER ITEM	TOTAL COST	TOTAL BUDGETED
			\$ -	
			\$ -	
			\$ -	
			\$ -	
			\$ -	
<b>TOTAL:</b>				0

**JUSTIFICATION/COMMENTS:**

DESCRIPTION OF MOTOR VEHICLE	NO. OF VEHICLES	COST PER VEHICLE	TOTAL COST	TOTAL BUDGETED
			\$ -	
			\$ -	
			\$ -	
			\$ -	
			\$ -	
<b>TOTAL:</b>				0

**JUSTIFICATION/COMMENTS:**

## BUDGET JUSTIFICATION - CAPITAL PROJECT DETAILS

Period: July 1, 2019 to June 30, 2020

West Hawaii Community Health Center, Inc

FUNDING AMOUNT REQUESTED						
TOTAL PROJECT COST	ALL SOURCES OF FUNDS RECEIVED IN PRIOR YEARS		STATE FUNDS REQUESTED	OTHER SOURCES OF FUNDS REQUESTED	FUNDING REQUIRED IN SUCCEEDING YEARS	
	FY: 2017-2018	FY: 2018-2019	FY:2019-2020	FY:2019-2020	FY:2020-2021	FY:2021-2022
PLANS						
LAND ACQUISITION						
DESIGN						
CONSTRUCTION						
EQUIPMENT						
<b>TOTAL:</b>	<b>0</b>	<b>0</b>	<b>0</b>	<b>0</b>	<b>0</b>	<b>0</b>
<b>JUSTIFICATION/COMMENTS:</b>						



**GOVERNMENT CONTRACTS, GRANTS, AND / OR GRANTS IN AID**

App: West Hawaii Community Health Center, Inc

Contracts Total: 2,510,800

	<b>CONTRACT DESCRIPTION</b>	<b>EFFECTIVE DATES</b>	<b>AGENCY</b>	<b>GOVERNMENT ENTITY (U.S. / State / Haw / Hon / Kau / Mau)</b>	<b>CONTRACT VALUE</b>
1	Purchase of Service for Primary Care	7/2013-6/2019	DOH	State	\$550,000
2	Perinatal Support Service	7/2014-6/2019	DOH	State	\$150,000
3	Breast Cervical Cancer Control	7/2013-6/2019	DOH	State	\$288,500
4	Dental Sealants	10/2015-2/2016	DOH	State	\$13,500
5	Health Connector	8/2013-11/2015	DHS	State	\$265,000
6	Marketplace Assister/Navigator	12/2015-2/2017	DHS	State	\$212,500
7	CIP for renovation of Kealakekua leased space	7/2017-6/2020	DOH	State	\$925,000
8	Adult Dental Services	7/2013-6/2016	Finance	County of Hawaii	\$35,000
9	Shipper's Wharf	1/2015-6/2015	Finance	County of Hawaii	\$50,000
10	Honaunau Health and Education Outreach	7/2017-6/2018	Finance	County of Hawaii	\$16,000
11	Outreach to vulnerable populations	7/2017-6/2018	Finance	County of Hawaii	\$5,300
12					
13					
14					
15					
16					
17					
18					
19					
20					
21					
22					
23					
24					
25					
26					
27					
28					
30					