

Department of Commerce and Consumer Affairs

CERTIFICATE OF GOOD STANDING

I, the undersigned Director of Commerce and Consumer Affairs of the State of Hawaii, do hereby certify that

RE-USE HAWAI'I

was incorporated under the laws of Hawaii on 10/10/2006 ; that it is an existing nonprofit corporation; and that, as far as the records of this Department reveal, has complied with all of the provisions of the Hawaii Nonprofit Corporations Act, regulating domestic nonprofit corporations.



IN WITNESS WHEREOF, I have hereunto set my hand and affixed the seal of the Department of Commerce and Consumer Affairs, at Honolulu, Hawaii.

Dated: January 16, 2019

Director of Commerce and Consumer Affairs

**DECLARATION STATEMENT OF
APPLICANTS FOR GRANTS PURSUANT TO
CHAPTER 42F, HAWAI'I REVISED STATUTES**

The undersigned authorized representative of the applicant certifies the following:

- 1) The applicant meets and will comply with all of the following standards for the award of grants pursuant to Section 42F-103, Hawai'i Revised Statutes:
 - a) Is licensed or accredited, in accordance with federal, state, or county statutes, rules, or ordinances, to conduct the activities or provide the services for which a grant is awarded;
 - b) Complies with all applicable federal and state laws prohibiting discrimination against any person on the basis of race, color, national origin, religion, creed, sex, age, sexual orientation, or disability;
 - c) Agrees not to use state funds for entertainment or lobbying activities; and
 - d) Allows the state agency to which funds for the grant were appropriated for expenditure, legislative committees and their staff, and the auditor full access to their records, reports, files, and other related documents and information for purposes of monitoring, measuring the effectiveness, and ensuring the proper expenditure of the grant.
- 2) If the applicant is an organization, the applicant meets the following requirements pursuant to Section 42F-103, Hawai'i Revised Statutes:
 - a) Is incorporated under the laws of the State; and
 - b) Has bylaws or policies that describe the manner in which the activities or services for which a grant is awarded shall be conducted or provided.
- 3) If the applicant is a non-profit organization, it meets the following requirements pursuant to Section 42F-103, Hawai'i Revised Statutes:
 - a) Is determined and designated to be a non-profit organization by the Internal Revenue Service; and
 - b) Has a governing board whose members have no material conflict of interest and serve without compensation.

Pursuant to Section 42F-103, Hawai'i Revised Statutes, for grants used for the acquisition of land, when the organization discontinues the activities or services on the land acquired for which the grant was awarded and disposes of the land in fee simple or by lease, the organization shall negotiate with the expending agency for a lump sum or installment repayment to the State of the amount of the grant used for the acquisition of the land.

Further, the undersigned authorized representative certifies that this statement is true and correct to the best of the applicant's knowledge.

Re-use Hawai'i

(Typed Name of Individual or Organization)

A. Quinn Vittum

(Signature)
A. Quinn Vittum

1/10/19

(Date)
Executive Director

(Typed Name)

(Title)

Application for Grants

If any item is not applicable to the request, the applicant should enter "not applicable".

I. Certification – Please attach immediately after cover page

1. Certificate of Good Standing (If the Applicant is an Organization)

If the applicant is an organization, the applicant shall submit one (1) copy of a certificate of good standing from the Director of Commerce and Consumer Affairs that is dated no earlier than December 1, 2018.

2. Declaration Statement

The applicant shall submit a declaration statement affirming its compliance with Section 42F-103, Hawaii Revised Statutes. ([Link](#))

3. Public Purpose

The applicant shall specify whether the grant will be used for a public purpose pursuant to Section 42F-102, Hawaii Revised Statutes. ([Link](#))

II. Background and Summary

1. A brief description of the applicant's background

Re-use Hawai'i is a nonprofit organization established in 2006 as a long-term solution to Hawai'i's issues of waste production and management. The mission of Re-use Hawai'i is to reduce waste through alternatives to demolition, from public donations of building materials, and to redistribute these materials to the community as an affordable resource. Through deconstruction and building material reuse, Re-use Hawai'i is transforming Hawai'i's largest source of waste into a sustainability-centered and affordable community resource.



Re-use Hawai'i utilizes two main programs to achieve its mission: the Re-use Hawai'i Deconstruction Program and the Re-use Hawai'i Redistribution Program. The Deconstruction Program dismantles residential and commercial buildings by hand as an alternative to conventional demolition. Through careful and skilled removal, up to 80% of a structure can be salvaged. Reusable material is then transported to the

Redistribution Center where it is made affordable and available to the community. In addition to reducing waste, this system creates jobs, keeps good reusable materials in our local economy and out of the landfill, and minimizes harmful CO2 emissions. Both the Deconstruction Program and Redistribution Program generate revenue to cover 90% of the organization's operation.

Starting with only seven employees, Re-use Hawai'i now consists of a team of more than 41 individuals working to help Hawai'i become more sustainable. To date, Re-use Hawai'i has performed over 500 deconstruction projects, served over 38,000 community members through its Redistribution Center, diverted over 11 million pounds of waste away from the landfill, and turned this waste into a locally produced community resource valuing over \$7 million.



With its capacity expansion efforts, Re-use Hawai'i now operates three and sometimes four simultaneously running deconstruction crews. Each crew is able to perform an average of 2 whole-house deconstruction projects per month.

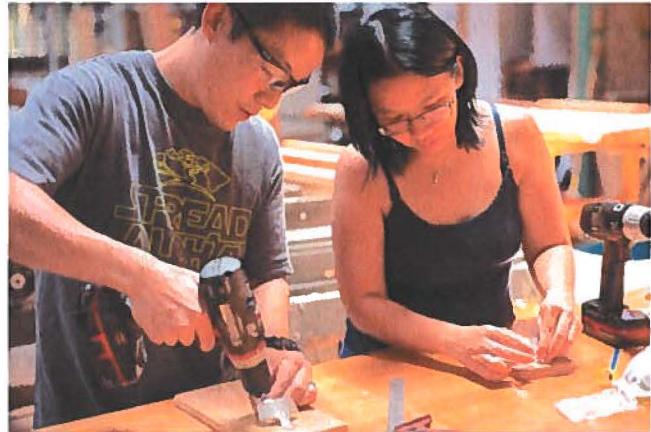
The salvaging and reuse of materials through deconstruction is a growing industry in almost every state, as it reduces CO2 emissions by avoiding the manufacturing and distribution of new material. Re-use Hawai'i's deconstruction program is a very effective way to recover material, is largely self-sustainable, creates jobs and workforce development opportunities, and is scalable to market demand. With over 450 full demolition projects occurring on Oahu each year, there is much opportunity for more waste to be diverted. Our practical methodology allows for growth and is designed to be adopted by others in order to maximize the diversion of waste.

The Re-use Hawai'i Redistribution Center offers the following programs for the community to learn and engage with the benefits of reuse:

- **Honolulu Tool Library** - the first tool lending library of its kind in Honolulu, serves the segment of the community that doesn't need to purchase expensive tools, but who want to have access to tools for their projects.
- **Community Workshops** - administered by the Honolulu Tool Library, workshops are open to the community to learn basic woodworking skills while working with salvaged material.
- **Community Pick-Up Program** - Re-use Hawai'i will pick up building materials at no cost from community members that do not have a way to bring their items to the Redistribution Center.
- **KVIBE** - a program of Kokuia Kalihi Valley, KVIBE is a skills and mentoring program that teaches the at-risk youth of Kalihi bike mechanic skills. Re-use Hawai'i distributes the bikes at its Redistribution Center and all proceeds are given to the KVIBE program.

2. The goals and objectives related to the request

Re-use Hawai'i is requesting funding to maintain its current operational capacity on Oahu and Hawai'i Island, as well as develop a Local Tree Reclamation and Milling Program, and develop a Workforce Development Program plan. These efforts will allow the organization to maximize the environmental impact of its waste diversion, while planning to provide trade skills for a segment of the community that is in need of support. Re-use Hawai'i is at a pivotal time in its development. Having recently expanded to Hawai'i Island, the organization is able to fulfill an increasing demand for waste reduction services while also providing employment opportunities within the community.



Re-use Hawai'i has a timely opportunity to align and support the goals and outcomes state-wide as the population is growing, construction is booming and more waste is being produced. In Hawai'i, 450 houses are demolished each year, which produces approximately 35% of the island's waste. Re-use Hawai'i currently deconstructs 10% of these residential houses in addition to various commercial projects, and provides thousands of community members with affordable building materials at its Redistribution Center, which is open 7 days a week. With more awareness of the organization - and an increasing number of industry professionals desiring sustainable solutions - it is paramount that the Re-use Hawai'i Deconstruction Services and Redistribution Programs maintain current capacity.

Through its 11 years of operation, Re-use Hawai'i has proven the effectiveness of its methods. The priority for the next one to three years is the operational refinement of each of our programs with the intent to make the organization 100% self-sustaining. The identified objectives represent the organization's most immediate path to self-sustainability and greater mission fulfillment.

Objective 1:

Stabilize and Maintain Re-use Hawai'i's Deconstruction and Retail Operations on Oahu and Hawai'i Island

Re-use Hawai'i recently expanded its operation to Hawai'i island, thanks in large part State GIA funding. Currently in the final months of its largest project to date at Kona Village Resort, the organization has already secured a remodel-related deconstruction project from a Kona home owner. Re-use Hawai'i is also fielding prospective deconstruction projects on Hawai'i Island.

Oahu Deconstruction: The goal is to maintain three simultaneous crews performing an average of two whole house deconstructions per crew every month.

Oahu Redistribution Center: The goal is to distribute an average of \$80K per month of salvaged materials back into use in the community.

Hawai'i Island Deconstruction: The goal is for Re-use Hawai'i to maintain one to two simultaneous crews performing an average of two whole house deconstruction projects per crew every month.

Hawai'i Island Redistribution Center: The goal is to distribute an average of \$19.5K per month of salvaged materials back into use in the community.

Objective 2:

Develop a Local Tree Reclamation and Milling Program

Every year, a large number of trees are removed to make way for construction or because of their disruptive root systems. Typically the trees are cut down, put into dumpsters and hauled to the PVT landfill. In 2017, Re-use Hawai'i partnered with a local tree miller who set up his mobile saw mill at the Re-use Hawai'i Redistribution Center.



Tree cuttings were dropped off by an arborist and the tree miller went to work creating two-inch thick live-edge wood slabs from Mango, Monkeypod, Opiuma, and False Kamani trees, to name a few. The unfinished slabs were stacked, measured, put into inventory and sold at a discount to Re-use Hawai'i customers. The operation was a success, but there were space challenges milling the trees at the Redistribution Center as a full-scale program.

Objective 3:

Develop a Workforce Development Program Plan

Re-use Hawai'i will develop a Workforce Development Plan that includes collaboration and coordination with local organizations to provide both educational and vocational opportunities to the community. This is a timely objective, as there is proposed State Legislation that would focus on reducing construction waste. If the legislation is approved, there will be a need for more deconstruction skill sets. As Deconstruction work is an ideal model for learning construction skills.

3. The public purpose and need to be served

The state of Hawai'i creates 1.8 million tons of waste annually, 35% of which comes from the construction and demolition of buildings around the island. This 600,000 tons of material generated by the construction and demolition industry is the single largest source of waste on the island. A study conducted by Yale University titled, "Linking Waste and Material Flows on the Island of Oahu, Hawaii: The Search for Sustainable Solutions," outlines the potential diversion rates of multiple waste management strategies. The study estimated that a program dedicated to diverting useful construction and demolitions waste away from the landfill and back into use had

the potential to divert between 50,000 and 125,000 tons of material every year. Re-use Hawai'i's methodology is based on the effectiveness and practicality of this strategy.

Using traditional demolition methods, 100% of a structure becomes construction waste which is then dumped into the private PVT landfill. This landfill for construction and demolition waste on Oahu is located in Nānākuli on the Wai'anae coast. In their 2012 article published in *Anthropology News* from the American Anthropological Association titled "Landfill in Paradise, Politics of Waste Management and Environmental Justice in Hawaii", Rachel Harvey and Annette Koh reported that; "From an environmental justice viewpoint Wai'anae has a poverty rate double the island average and is home to Oahu's largest Native Hawaiian population." Harvey and Koh went on to state that; "Most local politicians acknowledge that Wai'anae has shouldered the burden of waste disposal for Oahu." They also cited that Nānākuli residents have been impacted by the presence of construction debris including asbestos dust and other toxins blowing from the PVT landfill into their community. The more waste that is diverted from the PVT landfill, the greater the opportunity to advance the standard of living for this community.



The lumber and wood products industry has a net global emissions level of 467 million tons of CO₂ per year. Diversion of lumber and other wood products from landfills has the potential to reduce global CO₂ emissions by 135 million tons each year. The transportation of this material creates another source of green house gas emissions.

Due to our distance from our sources of building materials and other products, Oahu receives 16.6 million tons of material from freight shipping each year. Cargo shipping is estimated to account for over 84% of the global impact of CO₂ emissions of the transport sector. Through our imports, Hawai'i contributes to the global effects of our changing climate. The work of Re-use Hawai'i cuts CO₂ emissions by minimizing both the need for new material production and the need for importing material to Hawai'i.

In their *Pacific Environment and Climate Change Outlook*, the South Pacific Regional Environment Program identifies the Islands of the Pacific as some of the most susceptible to the economic, agricultural, and social effects of climate change. Their research illustrates the impacts of rising sea levels on island populations, and social structures of those islands. Sea level rise will effect the islands of Hawai'i by causing flooding and erosion. Waikiki Beach has been identified as one of the areas that will be most impacted. The loss of this beach alone has been estimated to cost the island \$2 billion each year. Drought and the decrease of available freshwater will follow shifting temperatures and rainfall patterns. Those most greatly impacted

are low-income communities with few options to counter the effects of climate change or relocate. As an island community, it is essential that Hawai'i be at the forefront of enacting climate change solutions.

It is fortunate that more attention being given to waste on our island by local government, cause-related organizations, local businesses and the public. As examples, there is a bill being introduced in the local House of Representatives and the Senate that puts more attention on construction waste reduction. The City & County's Integrated Solid Waste Management Plan Committee (ISWMP) is working on a plan with various stakeholders to best manage municipal waste in Honolulu.

4. Describe the target population to be served

The population served through our objectives are the residents of the state of Hawai'i. All residents are impacted by the practices of the Construction and Demolition industry and the waste that it produces. Providing alternatives to landfill expansion creates new opportunities for the use of public land. This program also benefits community members whose health and standard of living are directly impacted by landfills and their growth, which has been shown to disproportionately be residents of low to moderate income. Through material redistribution, Re-use Hawai'i serves homeowners, renters, contractors, artists, farmers, students, the film industry and others by offering an affordable and locally produced community resource. Over the past eleven years, Re-use Hawai'i has redistributed material valuing over \$7 million into the local economy, and created 41 jobs benefiting all of Oahu's residents. The prioritization of sustainability today benefits future Hawai'i residents and visitors who will manage the effects of our changing climate and rising sea levels. The production of new material consumes a tremendous amount of green house gases. For every ton of lumber that is salvaged for reuse, 60 pounds of green house gases are prevented by avoiding the manufacturing of new lumber. The addition of a Workforce Development Program Plan will detail the opportunity it will provide for community members in need of training and employment. The plan will include solidifying partnerships with organizations working in the areas of social work and education.

5. Describe the geographic coverage

Re-use Hawai'i's mission of waste reduction and conservation is one that involves the entirety of the state. Currently, the majority of salvaged material is sourced and redistributed on Oahu. Each transaction at our Redistribution Center is tracked and program users information is collected. For each of these transactions we gather the zip codes of origin for our program users. Through this data, we have determined that the highest concentrations of our program users come from Kailua, Kaneohe, Honolulu, and North Shore Oahu. We also work with residents of neighbor islands to transport material from Redistribution Center.

Re-use Hawai'i has performed deconstruction projects on Kauai, Maui, and Hawai'i island. The materials from these projects were redistributed within the communities from which they were salvaged.

III. Service Summary and Outcomes

1. Describe the scope of work, tasks and responsibilities

The scope of work includes all tasks under three objectives, as detailed below:

Objective 1: Stabilize and maintain Re-use Hawai'i's Deconstruction and Retail Operation on Hawai'i Island and Oahu

Objective 2: Develop a Local Tree Reclamation and Milling Program

Objective 3: Develop a Workforce Development Program

These objectives will be carried out and managed by the Executive Director, Chief Financial Officer, Redistribution Center Manager, and the Deconstruction Program Manager. Data will be compiled by the Chief Financial Officer and Administrative coordinator.

2. Provide a projected annual timeline for accomplishing the results or outcomes of the service

Annual Timeline for Accomplishing Objectives

Objective 1: Stabilize and maintain Re-use Hawai'i's Operation on Hawai'i Island and Oahu with the purpose of meeting the State of Hawaii waste reduction needs, and maximize the generation of affordable resources to Oahu and Hawai'i Island residents.				
Activities:	Q1	Q2	Q3	Q4
1. Maintain 3 simultaneous crews on Oahu performing an average of 2 whole house deconstructions per crew every month	*	*	*	*
2. Maintain 1-2 simultaneous crews on Hawai'i Island performing and average of 2 whole house deconstructions per crew every month	*	*	*	*
3. Oahu Redistribution Center distributes an average of \$80K per month of salvaged materials back into use in the community	*	*	*	*
4. Hawai'i Island Redistribution Center distributes an average of \$19.5K per month of salvaged materials back into use in the community	*	*	*	*

Annual Timeline for Accomplishing Objectives (cont.)

Objective 2: Develop a Local Tree Reclamation and Milling Program				
Activities:	Q1	Q2	Q3	Q4
1. Research cost, availability, location and access for 20,000 square foot venue	*			
2. Research personnel, set-up, equipment needs and cost: qualified employees, training, saw mill, racking, machinery, and kiln drying		*		

Annual Timeline for Accomplishing Objectives (cont.)-1

Objective 3: Develop a Workforce Development Program Plan				
Activities:	Q1	Q2	Q3	Q4
1. Identify and solidify collaboration local organizations		*		
2. Work to create a detailed plan with clear objectives that meet the needs of collaboration partners, as well as general community needs.			*	
3. Launch a Workforce Development pilot program				*

3. Describe its quality assurance and evaluation plans for the request. Specify how the applicant plans to monitor, evaluate, and improve their results

Management will perform ongoing evaluations to provide quality assurance and help to identify strength and growth areas. The Chief Financial Officer will issue monthly, quarterly, annual and project profit and loss statements to help managers and the Board of Directors understand and improve financial performance.

Monitor and Evaluation Plans		
Activity	Methods	Information to be monitored & evaluated for future improvement
Objective 1: Stabilize and Maintain Deconstruction and Redistribution Programs on Oahu and Hawai'i Island	Monthly project development activity analysis and project evaluations Web-based surveys given to deconstruction clients Bi-monthly management strategic meeting	Project timeframes and safety issues, number of operating crews, tonnage of diverted material, recycled metal, embodied energy conservation (CO2 prevention), status of monthly goals, efficiency of program performance, rate of material disposed vs diverted, and number prospects tracked through Salesforce customer relationship management tools.

Activity	Methods	Information to be monitored & evaluated for future improvement
Objective 2: Develop a Local Tree Reclamation and Milling Program	Acquire yard space Equipment & Staff Successful beginning and operating of the program	Process a minimum of 24,000 board feet of reclaimed trees per year (6,000 board feet per quarter) Determine and monitor qualified personnel, safety training

Monitor and Evaluation Plans (cont)		
Activity	Methods	Information to be monitored & evaluated for future improvement
Objective 3: Develop a Workforce Development Program Plan	Solidify partner/ collaborators and program requirements Determine program logistics Launch pilot program	Research the populations in need of the program, in the areas of social need as well as education Creation of a full plan and roll-out of a plan. Maybe a successful pilot program.

4. List the measure(s) of effectiveness that will be reported to the State agency through which grant funds are appropriated (the expending agency).

Measures of Effectiveness to be Reported	
Activity	Measure of Effectiveness
Stabilize and Maintain Deconstruction and Redistribution Programs on Oahu and Hawai'i Island	<p>OAHU:</p> <ul style="list-style-type: none"> • <u>Deconstruction</u>: Maintain 3 simultaneous crews who perform an average 2 whole-house deconstructions per month • <u>Redistribution Center</u>: Distribute an average of \$80K of salvaged materials per month to the community. <p>HAWAI'I ISLAND:</p> <ul style="list-style-type: none"> • <u>Deconstruction</u>: Maintain 1-2 simultaneous crews who perform an average 2 whole-house deconstructions per month • <u>Redistribution Center</u>: Distribute an average of \$19.5K of salvaged materials per month to the community.
Develop a Local Tree Reclamation Program	<ul style="list-style-type: none"> • Secure a minimum of 20,000 square feet of yard space • Secure equipment and staff • Develop thorough training curriculum • Process 20,000 board feet of reclaimed trees is milled per year
Develop a Workforce Development Program	<ul style="list-style-type: none"> • Identify populations to be served • Identify needs of partner/collaborators • Secure partner/collaborators • Launch a successful pilot program

IV. Financial

Budget

1. The applicant shall submit a budget utilizing the enclosed budget forms as applicable, to detail the cost of the request.

All applicable budget documents are supplied with supporting documentation.

2. The applicant shall provide its anticipated quarterly funding requests for the fiscal year 2020.

Quarter 1	Quarter 2	Quarter 3	Quarter 4	Total Grant
\$74,503.25	\$74,503.25	\$74,503.25	\$74,503.25	\$298,013

3. The applicant shall provide a listing of all other sources of funding that they are seeking for fiscal year 2020.

In addition to the State of Hawai'i GIA, Re-use Hawai'i is seeking funding from Foundations, Corporate Sponsors and the Economic Development Administration. Funding prospects include:

Foundations	Corporate Sponsors
Bank of Hawaii Hawaiian Airlines James and Abigail Campbell Family Foundation Koaniani Fund Kosasa Foundation Matson Foundation Bill Healy Foundation Atherton Family Foundation George N. Wilcox Trust Ward Village Foundation Cooke Family Foundation Hawai'i Community Foundation (FLEX)* Cooke Family Foundation McInerney Foundation A&B Foundation Hawaiian Electric Industries and HECO First Hawaiian Bank	Allied Builder Systems DTL / WCIT Kona Brewing Servco Foundation The Resort Group Riggs Distributing The Kobayashi Group HONBLUE Trinity Investments Cades Schutte Colliers International Deloitte Standard Commercial Fergus and Company Hawai'iLife Ferraro Choi Architects Hawai'i G70 HEMIC Honeywell Joe Uno and Associates Vittum Contracting First Insurance UHA

4. The applicant shall provide a listing of all state and federal tax credits it has been granted within the prior three years. Additionally, the applicant shall provide a listing of all state and federal tax credits they have applied for or anticipate applying for pertaining to any capital project, if applicable.

Not applicable.

5. The applicant shall provide a listing of all federal, state, and county government contracts, grants, and grants in aid it has been granted within the prior three years and will be receiving for fiscal year 2020 for program funding.

State GIA - OCS-GIA-19-10 in the amount of \$200,000

6. The applicant shall provide the balance of its unrestricted current assets as of December 31, 2018.

\$678,828.79

V. Experience and Capability

1. Necessary Skills and Experience

In the 11 years since Re-use Hawai'i inception, Re-use Hawai'i has performed over 500 Deconstruction projects state wide, diverted more than 11 million pounds of material from the waste stream, and redistributed \$7 million in affordable building materials to the community.

Re-use Hawai'i is an established environmental nonprofit organization with an impressive track record of success in fulfilling its mission of waste diversion through building material reuse and recycling. The skills needed to perform this work such as, knowledge of deconstruction methods, demolition industry practices, personnel training, and nonprofit finance, are provided by an experienced management team and dedicated staff.

The revenue generating streams of Re-use Hawai'i allow for income that is not often available to other non-profit organizations. Through its careful program design, Re-use Hawai'i is able to generate 90% of the revenue needed to operate.

2. Facilities

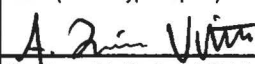
The Re-use Hawai'i Redistribution Warehouse is 40,000 square foot facility in Kaka'ako. Equipment involved in the transportation of material includes: three 17' flat-bed trucks, two box trucks, two pickup trucks, one full-size van, four telescopic forklifts, one skid steer machine and two conventional forklift trucks. The deconstruction program currently maintains four tool sets and two tool trailers. The existing administrative infrastructure consists of five offices with multiple workstations, 11 Mac computers connected to an internal network and a VOIP phone system.



BUDGET REQUEST BY SOURCE OF FUNDS

Period: July 1, 2019 to June 30, 2020

Applicant: Re-use Hawaii

BUDGET CATEGORIES	Total State Funds Requested (a)	Total Federal Funds Requested (b)	Total County Funds Requested (c)	Total Private/Other Funds Requested (d)
A. PERSONNEL COST				
1. Salaries	0			1,481,612
2. Payroll Taxes & Assessments	0			235,785
3. Fringe Benefits	0			161,997
TOTAL PERSONNEL COST				1,879,393
B. OTHER CURRENT EXPENSES				
1. Oahu Deconstruction Supplies	7,326			14,874
2. Oahu Deconstruction Tools & Equipment	32,332			65,643
3. Oahu Deconstruction Pro Services	36,923			74,966
4. Oahu Deconstruction Rent/Facilities	19,008			38,592
5. Hawaii Deconstruction Supplies	3,498			7,102
6. Hawaii Deconstruction Tools & Equipment	8,709			17,682
7. Hawaii Deconstruction Pro Services	16,091			32,669
8. Oahu Redistribution Ctr Supplies	7,286			14,794
9. Oahu Redistribution Ctr Tools & Equipment	6,336			12,864
10. Oahu Redistribution Ctr Pro Services	15,575			31,621
11. Oahu Redistribution Rent/Facilities	60,786			123,414
12. Hawaii Redistribution Ctr Supplies	1,544			3,136
13. Hawaii Redistribution Ctr Tools & Equipment	2,039			4,141
14. Hawaii Redistribution Ctr Pro Services	2,137			4,340
15. Hawaii Redistribution Rent/Facilities	12,375			25,125
16. Reclaimed Tree Milling Supplies	792			1,608
17. Reclaimed Tree Milling Tools & Equip	1,386			2,814
18. Reclaimed Tree Milling Pro Services	3,960			8,040
19. Reclaimed Tree Milling Yard Rent	9,900			20,100
20. Administrative Expenses	50,009			101,534
TOTAL OTHER CURRENT EXPENSES	298,013			605,057
C. EQUIPMENT PURCHASES				
D. MOTOR VEHICLE PURCHASES				
E. CAPITAL				
TOTAL (A+B+C+D+E)	298,013			2,484,451
SOURCES OF FUNDING		Budget Prepared By:		
(a) Total State Funds Requested	298,013	Daniel Murren	808-539-8904	
(b) Total Federal Funds Requested		Name (Please type or print)	Phone	
(c) Total County Funds Requested			1/18/19	
(d) Total Private/Other Funds Requested	2,484,451	Signature of Authorized Official	Date	
TOTAL BUDGET	2,782,464	A. Quinn Vittum, Executive Director		
		Name and Title (Please type or print)		

GOVERNMENT CONTRACTS, GRANTS, AND / OR GRANTS IN AID

Applicant: Re-use Hawai'i

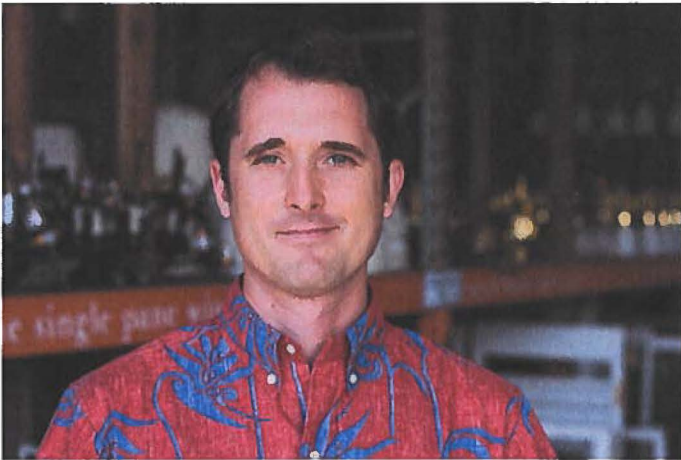
Contracts Total: 200,000

	CONTRACT DESCRIPTION	EFFECTIVE DATES	AGENCY	GOVERNMENT ENTITY (U.S. / State / Haw / Hon / Kau / Mau)	CONTRACT VALUE
1	Construction and Demolition Waste Reduction Program Support (OCS-GIA-19-10)	11/01/18 to 10/31/19	Office of Community Services	State	200,000
2					
3					
4					
5					
6					
7					
8					
9					
10					
11					
12					
13					
14					
15					
16					
17					
18					
19					
20					
21					
22					
23					
24					
25					

VI. Personnel: Project Organization and Staffing

1. Proposed Staffing, Staff Qualifications, Supervision and Training

In addition to the Board of Directors (list below), Re-use Hawai'i has a strong management team to implement the growth of our programs.



Executive Director Quinn Vittum

Quinn has been working in the building material reuse industry since 2001. He was a director of two reuse organizations in Washington State and has experience in all facets of non-profit building material reuse. Quinn is looked to as a national leader for innovating whole house deconstruction techniques.



Chief Financial Officer Daniel Murren

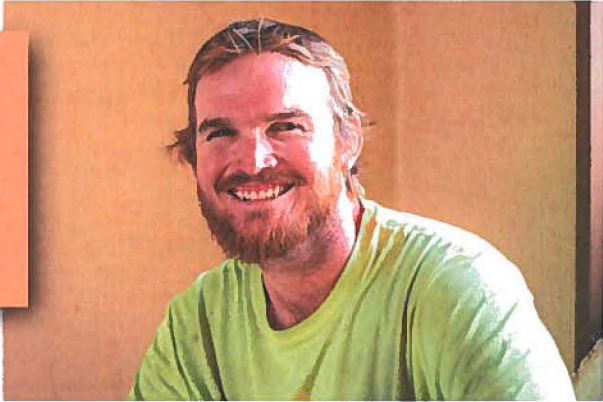
Daniel has 17 years of experience in non-profit and private industry accounting. He has been Re-use Hawai'i's CFO since its inception. He is familiar with all aspects of operations and has impressive expertise in budgeting and cashflow management.

Proposed Staffing, Staff Qualifications, Supervision and Training (CONT'D)

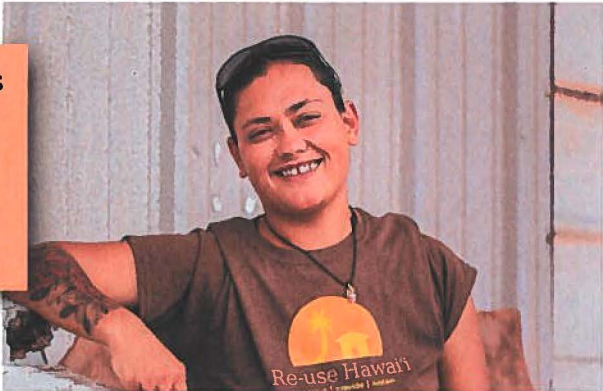
Lucas Rensko, Deconstruction Project Developer, has a background in financial management. Initially hired as a Team Leader, Lucas has executed large Re-use Hawaii Deconstruction Projects.



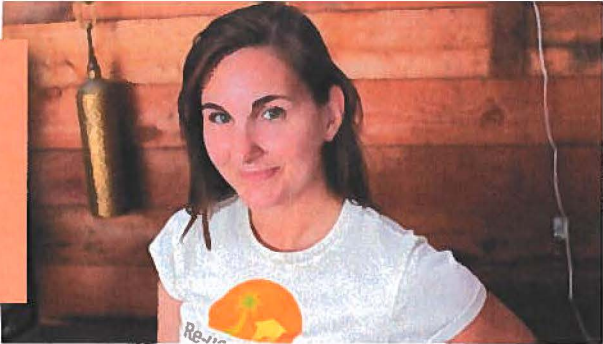
Ryan Reynolds, Deconstruction Project Manager Oahu & Hawai'i Island, has been instrumental in the set up and oversight of the Kona Deconstruction expansion. For the past 3 years he has led numerous residential and commercial jobs of varying sizes.



Jae Madiro, Redistribution Center Manager, has a background in building and equipment maintenance, home repair, and retail management. Jae brings immense skill, care, and drive in every facet of her role.



Carolyn Murren, Fundraising and Communications Director, has a background in marketing and communications. She previously was the Re-use Hawai'i Redistribution Center Manager. Carolyn sits on the organization's Communications Committee.



RE-USE HAWAI'I BOARD OF DIRECTORS



MIKE LAM

President

Senior Vice President, Development, Hunt Development, Hawai'i Region
michael.lam@huntcompanies.com

CASEY CHING

Treasurer

Vice President, Corporate Properties at Servco Pacific Inc.
casey.ching@servco.com

NOREEN REIMEL

Secretary

Communications Manager, Ulupono Initiative
nreimel@ulupono.com

KIRRA DOWNING

Director of Communications, DTL, LLC
kirra@dtlhawaii.com

STEPHEN JONES

Partner, Ning Lilly & Jones
stevejones@nljlaw.com

BEN WANG

Vice President, Blacksand Capital
ben@blacksandcapital.com

KANEKOA SHULTZ

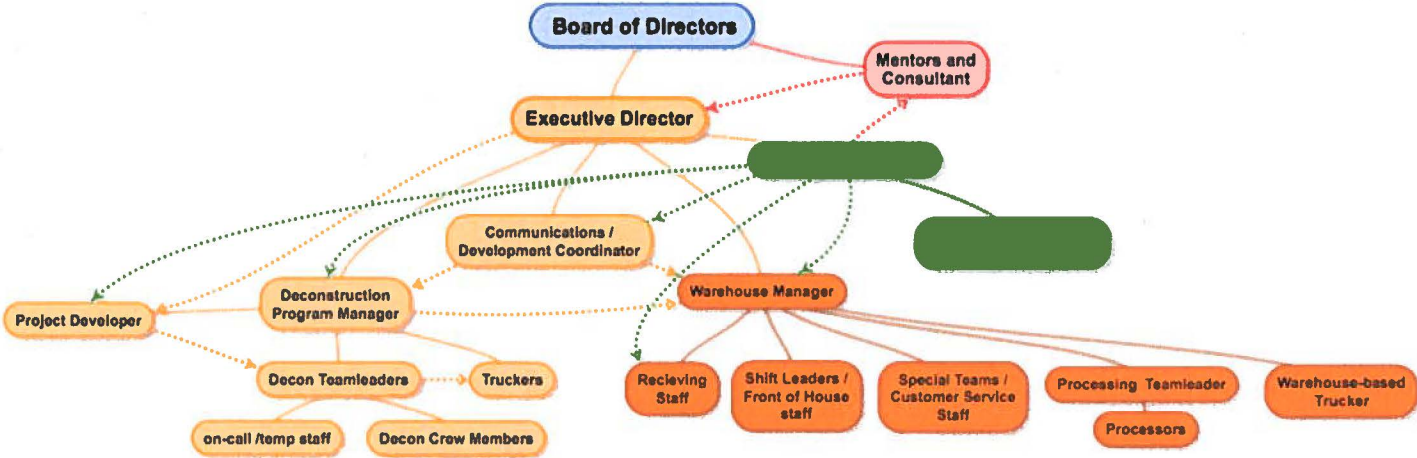
Executive Director, Kāko'o 'Ōiwi
admin@kakooiwi.org

QUINN VITTUM

Executive Director, Re-use Hawai'i
quinn@reusehawaii.org

2. Organization Chart

Organizational Chart showing Re-use Hawai'i's management structure and lines of collaboration. The goal of Re-use Hawai'i is to cultivate high-performing teams. A high-performing team is defined as a group of people with specific roles and complementary talents and skills, aligned with and committed to a common purpose, who consistently show high levels of collaboration and innovation, that produce superior results.



3. Compensation

The applicant shall provide an annual salary range paid by the applicant to the three highest paid officers, directors, or employees of the organization by position title, not employee name.

Executive Director - \$58,240

Chief Financial Officer - \$52,000

Deconstruction Program Manager, Oahu and Hawai'i Island - \$49,920

VII. Other

1. Litigation

None.

2. Licensure or Accreditation

Hawaii State Contractors License # C-28351.

3. Private Educational Institutions

Not applicable.

4. Future Sustainability Plan

The organization's future sustainability is dependent on operation continuing to grow. Over the past 11 years, Re-use Hawai'i has managed to cover 90% of its operating costs while fulfilling its mission of waste diversion and providing an affordable resource to the community.