

**THE THIRTIETH LEGISLATURE  
APPLICATION FOR GRANTS  
CHAPTER 42F, HAWAII REVISED STATUTES**

Type of Grant Request:

Operating                       Capital

Legal Name of Requesting Organization or Individual: Db:

O'ahu Resource Conservation and Development Council      n/a

Amount of State Funds Requested: \$ 110,551

Brief Description of Request (Please attach word document to back of page if extra space is needed):

O'ahu RC&D will utilize GIA funding to increase production and profitability of Hawai'i farms and ranches owned / operated by women. Information on important technical, financial and legal topics will be provided through workshops and strategic outreach initiatives, and one-on-one support will equip women farmers and ranchers for success. Increased knowledge and utilization of relevant resources will increase production of local food, improve stewardship of soil and water resources, enhance economic opportunities, and help Hawai'i achieve sustainable agriculture goals.

Amount of Other Funds Available:

State: \$ 0

Federal: \$ 49,846

County: \$ \_\_\_\_\_

Private/Other: \$ 21,581

Total amount of State Grants Received in the Past 5

Fiscal Years:

\$ 535,698

Unrestricted Assets:

\$ 110,000

New Service (Presently Does Not Exist):  Existing Service (Presently in Operation):

Type of Business Entity:

501(C)(3) Non Profit Corporation

Other Non Profit

Other

Mailing Address:

PO Box 209

City:

Kunia

State:

HI

Zip:

96759

Contact Person for Matters Involving this Application

Name:  
Jean Brokish

Title:  
Executive Director

Email:  
jean.brokish@oahurcd.org

Phone:  
808-622-9026 (o) | 808-728-9903 (m)

Federal Tax ID#:

State Tax ID#



Authorized Signature

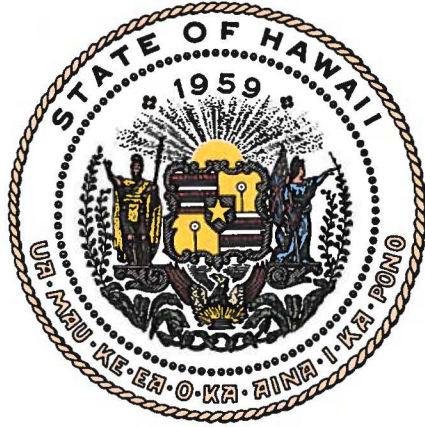
Mark Phillipson, Vice President

Name and Title

1/17/19

Date Signed

**received**  
1/17/19 2:38p JR



## Department of Commerce and Consumer Affairs

### CERTIFICATE OF GOOD STANDING

I, the undersigned Director of Commerce and Consumer Affairs of the State of Hawaii, do hereby certify that

**O'AHU RESOURCE CONSERVATION AND DEVELOPMENT COUNCIL**

was incorporated under the laws of Hawaii on 11/24/1997 ;  
that it is an existing nonprofit corporation; and that,  
as far as the records of this Department reveal, has complied  
with all of the provisions of the Hawaii Nonprofit Corporations  
Act, regulating domestic nonprofit corporations.



IN WITNESS WHEREOF, I have hereunto set  
my hand and affixed the seal of the  
Department of Commerce and Consumer  
Affairs, at Honolulu, Hawaii.

Dated: January 15, 2019

Director of Commerce and Consumer Affairs

**DECLARATION STATEMENT OF  
APPLICANTS FOR GRANTS PURSUANT TO  
CHAPTER 42F, HAWAI'I REVISED STATUTES**

The undersigned authorized representative of the applicant certifies the following:

- 1) The applicant meets and will comply with all of the following standards for the award of grants pursuant to Section 42F-103, Hawai'i Revised Statutes:
  - a) Is licensed or accredited, in accordance with federal, state, or county statutes, rules, or ordinances, to conduct the activities or provide the services for which a grant is awarded;
  - b) Complies with all applicable federal and state laws prohibiting discrimination against any person on the basis of race, color, national origin, religion, creed, sex, age, sexual orientation, or disability;
  - c) Agrees not to use state funds for entertainment or lobbying activities; and
  - d) Allows the state agency to which funds for the grant were appropriated for expenditure, legislative committees and their staff, and the auditor full access to their records, reports, files, and other related documents and information for purposes of monitoring, measuring the effectiveness, and ensuring the proper expenditure of the grant.
- 2) If the applicant is an organization, the applicant meets the following requirements pursuant to Section 42F-103, Hawai'i Revised Statutes:
  - a) Is incorporated under the laws of the State; and
  - b) Has bylaws or policies that describe the manner in which the activities or services for which a grant is awarded shall be conducted or provided.
- 3) If the applicant is a non-profit organization, it meets the following requirements pursuant to Section 42F-103, Hawai'i Revised Statutes:
  - a) Is determined and designated to be a non-profit organization by the Internal Revenue Service; and
  - b) Has a governing board whose members have no material conflict of interest and serve without compensation.

Pursuant to Section 42F-103, Hawai'i Revised Statutes, for grants used for the acquisition of land, when the organization discontinues the activities or services on the land acquired for which the grant was awarded and disposes of the land in fee simple or by lease, the organization shall negotiate with the expending agency for a lump sum or installment repayment to the State of the amount of the grant used for the acquisition of the land.

Further, the undersigned authorized representative certifies that this statement is true and correct to the best of the applicant's knowledge.

O'ahu Resource Conservation and Development Council  
(Typed Name of Individual or Organization)

  
(Signature) 1/17/19  
(Date)

Mark Phillipson  
(Typed Name) Vice President  
(Title)

**3. Public Purpose**

*The grant will be used for a public purpose pursuant to Section 42F-102, Hawaii Revised Statutes.*

The name of the requesting organization or individual	O'ahu Resource Conservation and Development Council
The public purpose for the grant	Enhance food production and community resiliency by increasing productivity and profitability of Hawaii's women farmers and ranchers.
The services to be supported by the grant	Workshops, one-on-one consultation and information sharing on a variety of technical and financial topics important to women engaged in agricultural enterprises.
The target group	Women operating agricultural enterprises (farms, ranches and agricultural businesses) in Hawaii
The cost of the grant and the budget	\$110,551.00

## Ag Wahine: Equipping Women Farmers for Success

### **II. Background and Summary**

#### **1. Brief description of the applicant's background**

O'ahu Resource Conservation and Development Council (O'ahu RC&D) has been serving Hawai'i's rural communities and farmers since 1997 through partnerships with community representatives to build leadership capacity and improve utilization of natural resources. The organization was officially granted 501c3 status in 2001, and in its formative years, had a formal partnership agreement with the U.S. Department of Agriculture – Natural Resources Conservation Service. Since 2011, Oahu RC&D has been operating as a fully independent nonprofit organization.

Our programs focus on building capacity among those making decisions regarding the use of soil and water resources and the production of local food. Services include providing technical assistance and conservation planning to farmers, land users and communities; and raising awareness and appreciation of agricultural issues.

#### **2. Goals and objectives related to the request**

The overall goal of this project is to increase production and profitability of farms and ranches owned / operated by women and includes two key objectives...

Objective 1. Increase knowledge and utilization of technical, financial and legal resources related to agricultural production and profitability

- potential topics include: record keeping and accounting; taxes; business planning; food safety; equipment (e.g. tillage equipment, chainsaw use, welding); livestock handling; agronomic (soil and plant health); value-added processing; marketing and pricing contracts; and communications.

Objective 2. Share information through workshops and strategic outreach initiatives

- On-farm workshops
- Electronic and social media (eg. e-newsletter and website; YouTube video; Facebook, Instagram, etc.)
- Community outreach (e.g. conference presentation, partner organizations, community events)

#### **3. Public purpose and need to be served**

This project helps Hawai'i achieve its sustainable agriculture goals. At the forefront of the international discussions for sustainable development, goals and targets have been set

for Hawai'i to adopt initiatives to sustain our local communities. One of the most highlighted issues discussed is the goal of doubling local food production by 2030. On a national level, women in agriculture are being recognized for their ability to contribute to local food systems by integrating sustainable agriculture methods and efficiently utilizing technical resources. Providing support for Hawai'i's women farmers and ranchers aligns with the Sustainable Development Goal of doubling local food production, while also empowering women farmers and ranchers to create stronger and more resilient communities.

For decades, Hawai'i agriculture was dominated by plantation-style agriculture. This production system typically included large operations, male-dominated management, and often focused on profits at the expense of worker and family well-being. Recent shifts away from plantations toward diversified agriculture have created opportunities for small and medium sized farms; and data indicate that more and more women are taking lead roles in farm production and management.

Despite their increasing numbers and significant potential to enhance the well-being of individuals, families, and communities, women farmers are often not the primary beneficiary of farm training programs. Studies of women farmers conducted on the mainland confirm that existing networks and historical approaches used to provide training and information to farmers often do not consider perspectives or needs of women. O'ahu RC&D has been monitoring these trends and in 2016 launched its Women Farmer Program. > *More detailed information about our women farmer initiative is provided under Section V.1. Necessary Skills and Experience.*

Women farmers and ranchers participating in our workshops and program activities repeatedly express need for additional technical training (workshops, one-on-one consultations) and information is needed to increase productivity and profitability.

#### **4. Target population to be served**

This project will serve the growing population of Hawai'i women engaged in agriculture. The most recently available (2012) agriculture census data for Hawai'i indicate that women comprise more than 35% of the total number of farm operators (3,808 out of 10,655); and women are the principal operator on more than 1/4 of Hawai'i's farms (1,574 out of 7,000 individuals). The majority of women-run farms are less than 9 acres in size, but together, women farmers manage 130,954 acres and generate \$45 million in revenue.

#### **5. Geographic coverage**

Technical training and informational resources will be available to all farms operating in Hawai'i, with outreach targeted to the following key agricultural communities:

<b>County</b>	<b>Key Agricultural Communities</b>
Hawai'i	Hilo, Honoka'a, Kailua-Kona, Kapa'au, Kealahou, Pahala, Pahoa and Waimea
Honolulu	Ewa, Hale'iwa, Kahuku, Kunia, La'ie, Wahiawa, Waiahole, Waialua, Wai'anae and Waimanalo
Kaua'i	Hanalei, Hanapepe, Kapa'a, Lihu'e and Waimea
Maui	Hana, Kaunakakai (Molokai), Kahului, Kihei, Kula, Lahaina, and Lana'i City (Lana'i)

### **III. Service Summary and Outcomes**

#### **1. Scope of work, tasks and responsibilities**

To increase knowledge and utilization of technical, financial and legal resources related to agricultural production and profitability and share information through strategic outreach opportunities, the following tasks will be completed during the project period:

##### **Host informational workshops featuring technical experts and on-farm examples**

*O'ahu RC&D staff will work with host farms and technical experts to plan and host workshops designed to provide information on production and profitability topics. Whenever possible, the workshops will be held on working farms and women farmers and ranchers will share their personal experiences.*

##### **Provide one-on-one consultation on priority topics**

*O'ahu RC&D will connect women farmers with a network of technical experts who will provide information to participating farmers. We anticipate drawing expertise from key partners like UH-Manoa's College of Tropical Agriculture and Human Resources Cooperative Extension Service, the Hawai'i Department of Agriculture, local Soil and Water Conservation Districts, other Hawai'i-based RC&D Councils, local for-profit companies and agricultural professionals.*

##### **Distribute resources via electronic and social media platforms**

*O'ahu RC&D staff will produce electronic information resources (e.g. video, fact sheets) and distribute via e-newsletter, website and social media platforms, where farmers will also share information with each other via peer-to-peer networks.*

##### **Assess increased production and economic growth**

*O'ahu RC&D staff will conduct site visits and / or utilize email and phone surveys to conduct interviews of participating farmers and collect information on the production and economic gains realized through the project tasks.*

#### **2. Projected annual timeline**

Project tasks will span the twelve-month project period as follows

Task	Q1	Q2	Q3	Q4
Plan and host informational workshops				
Provide one-on-one consultation to women farmers and ranchers				
Create and share informational resources via electronic and social media platforms				
Assess increased production and economic growth				

### 3. Quality assurance and evaluation plans

Project tasks will be evaluated as follows

Task	Monitoring / Evaluation Plan
Plan and host informational workshops	Number of workshops held; number of workshop attendees; pre- and post-workshop surveys
Provide one-on-one consultation to women farmers and ranchers	Number of requests for assistance; number of participants assisted
Create and share informational resources via electronic and social media platforms	Number of articles, posts, etc; number of clicks and reach on social media platforms; number of video views
Assess increased production and economic growth	Conduct site visits to observe / monitor impacts; interview participants; conduct pre- and post-project interviews to assess changes in production and profitability

### 4. Measure(s) of effectiveness.

Number of workshops held = 3  
 Number of workshop attendees = 90  
 Number of participants assisted = 150  
 Number of articles shared via e-newsletter = 2 (total reach 4500 people)  
 Number of social media posts = 12 (total impact 2400)  
 Number of video views = 150  
 Production / profitability increase on participating farms = \$350,000

## IV. Financial / Budget

### 1. Budget forms. The following budget forms are attached.



- a. Budget request by source of funds
- b. Personnel salaries and wages
- c. Equipment and motor vehicles
- d. Capital project details
- e. Government contracts, grants, and grants in aid

**2. Anticipated quarterly funding requests for the fiscal year 2020.**

Quarter 1	Quarter 2	Quarter 3	Quarter 4	Total Grant
\$22,638	\$27,638	\$35,638	\$24,638	\$110,551

**3. List of all other sources of funding sought for fiscal year 2020.**

In addition to the \$110,551 requested from the State, we have secured more than \$78,000 in federal, state and private funds to support training for women farmers and ranchers. Funds comes from the Western Center for Extension Risk Management Education (\$49,000), Atherton Family Foundation (\$15,500), Western Center for Agriculture Health and Safety (\$6,700), Women’s Fund of Hawaii (\$4,000), and the Hawaii Community Foundation (\$10,000).

We have also submitted an application for \$49,000 to WERME 2019 and have identified some additional funding sources and we plan to submit other grant requests to support additional outreach and training. We hope to expand the program and reach additional women farmers and ranchers as more resources are secured.

**4. State and federal tax credits**

Not applicable - Oahu RC&D has not received, nor applied for, any tax credits.

**5. Federal, state, and county government contracts, grants, and grants in aid it has been granted within the prior three years and will be receiving for fiscal year 2020 for program funding.**

Please refer to the list of government grants and contracts provided.

**6. Balance of unrestricted current assets as of December 31, 2018.**

Oahu RC&D has \$110,000 in unrestricted assets as of 12/31/18

*Note: this is an estimate, with actual figure pending detailed year-end adjustments*

**V. Experience and Capability**

## 1. Necessary Skills and Experience

O'ahu RC&D has been serving Hawai'i's rural communities and producers since 1997 through partnerships that build leadership capacity and improve utilization of natural resources. In recent years, our efforts have focused on raising awareness of agricultural issues, increasing long-term productivity and serving as the "last mile" to connect farmers to existing resources.

Through local agricultural community outreach and development, we routinely develop educational workshops that employ peer-to-peer learning. Additionally, we work one-on-one with producers to manage risks by increasing compliance with environmental regulations and connecting producers with resources and tools that can increase profitability and sustain their production for generations to come.

In 2016, O'ahu RC&D launched its women farmer program utilizing Western Extension Risk Management Education (WERME) funding. A needs assessment was used to identify training needs among Hawai'i's women farmers and ranchers. We utilized the results to plan and deliver four workshops in the fall of 2017 that engaged 139 women farmers throughout the state. Workshops included technical presentations and hands-on work sessions, and featured perspectives of women farmers from each island. Participants reported that utilization of concepts and tools presented at the workshops increased revenues by \$68,000 (realized through increased food production, enhanced efficiencies and increased access to markets).

We also provided financial assistance for six women farmers throughout the State of Hawai'i to work with technical experts on production and marketing related topics. While the investments were relatively small (less than \$1,000 / farm), the impacts were significant, with all farms reporting gains in production and revenues. The assistance also built capacity that is not measured in dollars... one recipient stated, "This grant empowered me to make executive decisions and be confident in my agribusiness."

In the fall of 2018, we hosted a second series of workshops for women farmers and ranchers that focused on value-added production, marketing and economic diversification. These workshops engaged 96 women farmers; and newly created social media platforms targeting women farmers have cultivated a following of 130 women farmers in just three months. We continue to provide support for the growing network of women engaged in agriculture, including securing private funding to sponsor five women farmers to attend the National Women Farmers Conference in San Diego.

Additionally, we have developed valuable informational resources, including the "Hawai'i Agribusiness Guidebook" created in collaboration with GoFarm Hawaii. This resource includes information on important topics like record-keeping, cost of production, and developing a business plan. We have projects utilizing on-farm research to evaluate the use of multi-species cover crops and to identify best practices for cacao orchard establishment.

Information about our projects and services, including aforementioned resources, can be found on our website: [www.oahurcd.org](http://www.oahurcd.org).

## **2. Facilities**

Our offices are located in the Kunia Village and AgriBusiness Complex, which is a central hub for collaborative agricultural businesses and services. This location offers shared resources such as conference and training facilities, and fosters partnerships and stronger working relationships. The facilities are owned by the Kunia Village Title Holding Corporation, a subsidiary of the Hawai'i Agriculture Research Center. Co-tenants include the Hawai'i Agriculture Research Center, the Hawai'i Farm Bureau Federation, Nutrien (formerly Crop Production Services), Hawai'i Crop Improvement Association, Hawai'i Agriculture Foundation and the West O'ahu Soil and Water Conservation District.

In addition to physical office space, O'ahu RC&D staff are reimbursed for use of personal vehicles to conduct site visits and meet with project partners. The use of common technologies (laptops, remote desktop connections and cloud storage) facilitate data access and efficient completion of project tasks.

## **VI. Personnel: Project Organization and Staffing**

### **1. Proposed Staffing, Staff Qualifications, Supervision and Training**

Francesca (Frankie) Koethe has taken a very active role in our women farmer program, including assisting with the 2017 workshop series, leading follow up and evaluation of the 2017 workshops, leading the 2018 workshop series, and launching the women farmer network Facebook page. Frankie recently led a cohort of Hawai'i women farmers to attend the Women's Agriculture Conference in San Diego. Frankie has a master's degree in Natural Resources and Environmental Management from UH-Manoa. She will lead all workshop logistics (planning, promotion, registration, evaluation) and will oversee the delivery and evaluation of technical support.

Nicole Correa joined O'ahu RC&D in February 2018 as the Office Assistant and has been taking a more active role in the women farmer program. As a woman rancher, she brings valuable, real-world, perspectives to this project; and is able to connect with project participants on a meaningful level. Nicole has a Master's in Animal Science from UH-Manoa. She will assist Ms. Koethe in project tasks.

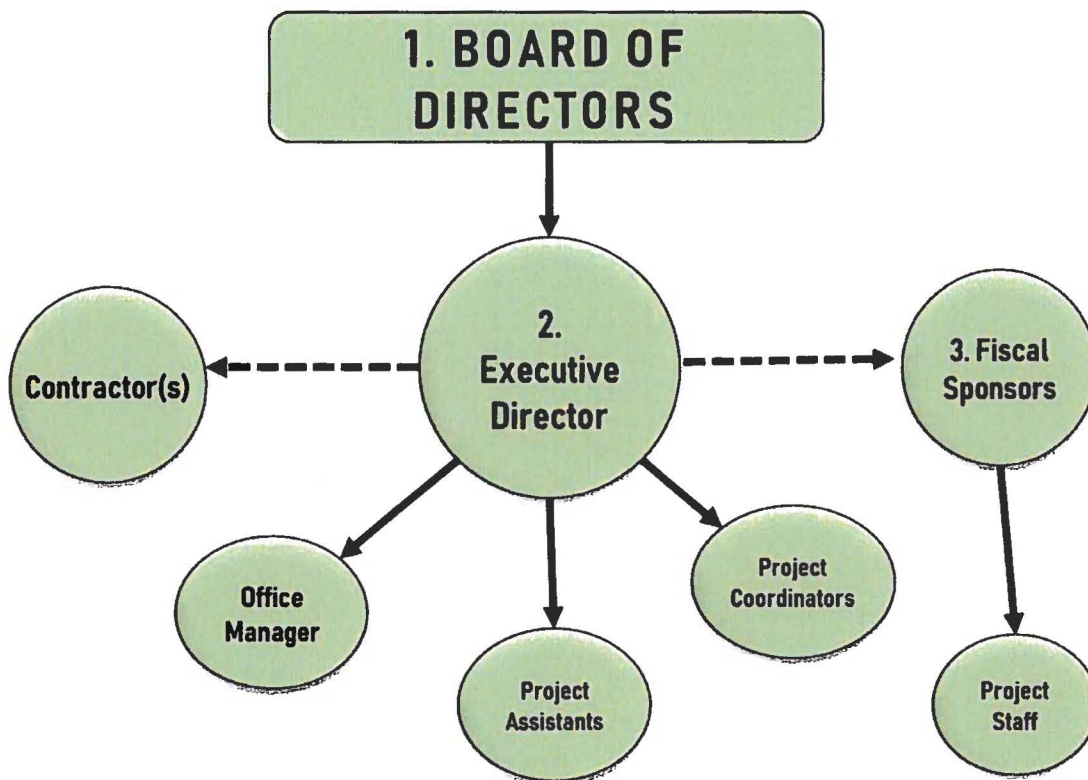
Jean Brokish is the executive director of O'ahu RC&D. She has a bachelor's and a master's degree in agriculture and brings nearly 20 years of experience working with farmers and communities to improve agricultural stewardship, including 12 years in non-profit management. Ms. Brokish has worked for O'ahu RC&D for ten years, and she will

provide administrative oversight for budget and reporting requirements and ensure project deliverables are met.

O'ahu RC&D routinely contracts agricultural professionals to provide technical expertise for projects like this, and we anticipate drawing expertise from key partners like UH-Manoa's College of Tropical Agriculture and Human Resources Cooperative Extension Service, the Hawaii Department of Agriculture, local Soil and Water Conservation Districts, neighboring RC&D Councils, local for-profit companies and agricultural professionals. The model of employing a small staff and collaborating with organizations and agricultural professionals provides greater flexibility, and enables O'ahu RC&D to manage its financial resources more efficiently.

Additionally, for this project we view the farmers and ranchers as experts and will utilize peer-to-peer learning methods to connect participants with each other. Peer-to-peer learning is an effective tool when training farmers and it has been shown to align well with women's learning styles.

## 2. Organization Chart



1. The Board of Directors oversees policy and supervises the Executive Director.
2. The Executive Director is the direct supervisor and manager of all staff employed by the organization, and oversees agreements and work products with contractors.

3. The organization serves as a fiscal sponsor for a variety of community groups and projects that support our mission. The Executive Director oversees these relationships, with lead staff or volunteers within these entities managing project staff.

### **3. Compensation**

Annual salary ranges for the three highest paid positions.

- Executive Director = \$70,000 - \$88,000
- Project Coordinator = \$50,000 - \$68,000
- Program Specialists = \$45,000 - \$60,000

## **VII. Other**

### **1. Litigation: disclose pending litigation**

Not applicable.

### **2. Licensure or Accreditation**

Not applicable.

### **3. Private Educational Institutions**

Grant will not be used to support or benefit a sectarian or non-sectarian private educational institution.

### **4. Future Sustainability Plan**

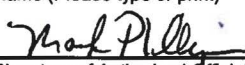
Organizationally, O'ahu RC&D has a diverse funding stream that includes multiple grants and contracts from various government agencies and private entities. We also have a robust fee-for-service program that generates income to sustain the organization. We've been able to leverage multiple, various, sources of funding for the initial stages of our women farmer program and see many opportunities to sustain our work beyond the grant period.

Additionally, grant funds will be used as a hand-up, not a hand-out. Using funds to create, gather and share information with women farmers and ranchers will cultivate capacity that will last long after the project period ends. Peer-to-peer learning networks formed through the project will catalyze continued information sharing and reap benefits for individuals, families and communities for years to come.

## BUDGET REQUEST BY SOURCE OF FUNDS

Period: July 1, 2019 to June 30, 2020

Applicant: O'ahu Resource Conservation and Development Council

BUDGET CATEGORIES	Total State Funds Requested (a)	Total Federal Funds Requested (b)	Total County Funds Requested (c)	Total Private/Other Funds Requested (d)
<b>A. PERSONNEL COST</b>				
1. Salaries	\$ 34,950	\$ 20,224	\$ -	\$ 8,500
2. Payroll Taxes & Assessments	\$ 6,728	\$ 4,982	\$ -	\$ 1,636
3. Fringe Benefits	\$ 9,436	\$ 5,762	\$ -	\$ 2,295
<b>TOTAL PERSONNEL COST</b>	<b>\$ 51,114</b>	<b>\$ 30,968</b>	<b>\$ -</b>	<b>\$ 12,431</b>
<b>B. OTHER CURRENT EXPENSES</b>				
1 airfare, interisland	\$ 3,500	\$ 1,100	\$ -	\$ -
2 vehicle rental	\$ 1,400	\$ 195	\$ -	\$ -
3 airport parking	\$ 280	\$ -	\$ -	\$ -
4 mileage	\$ 696	\$ 343	\$ -	\$ -
5 per diem	\$ 560	\$ 750	\$ -	\$ -
6 venue rental	\$ 2,250	\$ 3,500	\$ -	\$ -
7 professional expertise	\$ 40,000	\$ 8,400	\$ -	\$ 6,500
8 video	\$ 5,000	\$ -	\$ -	\$ 1,500
9 supplies (workshop)	\$ 1,950	\$ 1,800	\$ -	\$ -
10 supplies (office)	\$ 180	\$ 90	\$ -	\$ 150
11 telecomm	\$ 240	\$ 640	\$ -	\$ 300
12 utilities	\$ 180	\$ 200	\$ -	\$ 200
13 insurance	\$ 480	\$ 480	\$ -	\$ -
14 conference registration (ALF)	\$ 825	\$ -	\$ -	\$ -
15 bookkeeping / audit	\$ 1,896	\$ 1,380	\$ -	\$ 500
16				
17				
18				
19				
20				
<b>TOTAL OTHER CURRENT EXPENSES</b>	<b>\$ 59,437</b>	<b>\$ 18,878</b>	<b>\$ -</b>	<b>\$ 9,150</b>
<b>C. EQUIPMENT PURCHASES</b>	\$ -			
<b>D. MOTOR VEHICLE PURCHASES</b>	\$ -			
<b>E. CAPITAL</b>	\$ -			
<b>TOTAL (A+B+C+D+E)</b>	<b>\$ 110,551</b>	<b>\$ 49,846</b>	<b>\$ -</b>	<b>\$ 21,581</b>
<b>SOURCES OF FUNDING</b>		Budget Prepared By:		
(a) Total State Funds Requested	110,551	Jean Brokish	808-622-9026	
(b) Total Federal Funds Requested	49,846	Name (Please type or print) <span style="float: right;">Phone</span>		
(c) Total County Funds Requested	0		1/17/2019	
(d) Total Private/Other Funds Requested	21,581	Signature of Authorized Official <span style="float: right;">Date</span>		
<b>TOTAL BUDGET</b>	<b>181,978</b>	Mark Phillipson, Vice President Name and Title (Please type or print)		

## BUDGET JUSTIFICATION - PERSONNEL SALARIES AND WAGES

Period: July 1, 2019 to June 30, 2020

Applicant: O'ahu Resource Conservation and Development Council

POSITION TITLE	FULL TIME EQUIVALENT	ANNUAL SALARY A	% OF TIME ALLOCATED TO GRANT REQUEST B	TOTAL STATE FUNDS REQUESTED (A x B)
Project Coordinator	1	\$52,000.00	40.00%	\$ 20,800.00
Project Assistant	1	\$41,600.00	25.00%	\$ 10,400.00
Executive Director	1	\$75,000.00	5.00%	\$ 3,750.00
				\$ -
				\$ -
				\$ -
				\$ -
				\$ -
				\$ -
				\$ -
				\$ -
				\$ -
				\$ -
				\$ -
				\$ -
				\$ -
				\$ -
<b>TOTAL:</b>				<b>34,950.00</b>

**JUSTIFICATION/COMMENTS:**  
 Project staff will allocate time to work with women farmers across the state, developing and distributing information on technical, financial and legal topics.

## BUDGET JUSTIFICATION - EQUIPMENT AND MOTOR VEHICLES

Period: July 1, 2019 to June 30, 2020

Applicant: Oahu Resource Conservation and  
Development Council

DESCRIPTION EQUIPMENT	NO. OF ITEMS	COST PER ITEM	TOTAL COST	TOTAL BUDGETED
NOT APPLICABLE			\$ -	
			\$ -	
			\$ -	
			\$ -	
			\$ -	
<b>TOTAL:</b>				\$ -

**JUSTIFICATION/COMMENTS:**

DESCRIPTION OF MOTOR VEHICLE	NO. OF VEHICLES	COST PER VEHICLE	TOTAL COST	TOTAL BUDGETED
NOT APPLICABLE			\$ -	
			\$ -	
			\$ -	
			\$ -	
			\$ -	
<b>TOTAL:</b>				\$ -

**JUSTIFICATION/COMMENTS:**



## BUDGET JUSTIFICATION - CAPITAL PROJECT DETAILS

Period: July 1, 2019 to June 30, 2020

Applicant: O'ahu Resource Conservation and  
Development Council

FUNDING AMOUNT REQUESTED						
TOTAL PROJECT COST	ALL SOURCES OF FUNDS RECEIVED IN PRIOR YEARS		STATE FUNDS REQUESTED	OTHER SOURCES OF FUNDS REQUESTED	FUNDING REQUIRED IN SUCCEEDING YEARS	
	FY: 2017-2018	FY: 2018-2019	FY:2019-2020	FY:2019-2020	FY:2020-2021	FY:2021-2022
PLANS	\$ -	\$ -	\$ -	\$ -	\$ -	\$ -
LAND ACQUISITION	\$ -	\$ -	\$ -	\$ -	\$ -	\$ -
DESIGN	\$ -	\$ -	\$ -	\$ -	\$ -	\$ -
CONSTRUCTION	\$ -	\$ -	\$ -	\$ -	\$ -	\$ -
EQUIPMENT	\$ -	\$ -	\$ -	\$ -	\$ -	\$ -
<b>TOTAL:</b>	<b>\$ -</b>	<b>\$ -</b>	<b>\$ -</b>	<b>\$ -</b>	<b>\$ -</b>	<b>\$ -</b>
<b>JUSTIFICATION/COMMENTS:</b>						
NOT APPLICABLE						

**GOVERNMENT CONTRACTS, GRANTS, AND / OR GRANTS IN AID**

Applicant: O'ahu Resource Conservation and Development Council

Contracts Total:

\$843,861.71

	<b>CONTRACT DESCRIPTION</b>	<b>EFFECTIVE DATES</b>	<b>AGENCY</b>	<b>GOVERNMENT ENTITY</b> (U.S. / State / Haw / Hon / Kau / Mau)	<b>CONTRACT VALUE</b>
1	State GIA (Hawai'i One Software)	4/15/16-4/14/17	H.D.O.A	State	\$58,320.00
2	Cover Crop Cocktails	4/21/16-1/15/19	Western SARE	U.S.	\$41,606.00
3	Ag. Stewardship in the Ma'ili'ili Watershed	12/19/16-12/19/18	Department of Health	State	\$190,035.51
4	Ka'alaea and Waiahole Stream Restoration Phase 2	12/19/16-6/19/19	Department of Health	State	\$216,811.20
5	Cacao Orchard Establishment	4/01/17-10/31/20	Western SARE	U.S.	\$49,789.00
6	Specialty Crop Block Grant	12/22/17-12/22/19	H.D.O.A	State	\$39,747.00
7	Hawai'i Women Farmers: Farmer to Farmer Networks	4/01/18-9/30/19	WERME (USDA-NIFA)	U.S.	\$49,980.00
8	CTA Contribution Agreement	5/2/18-9/30/19	NRCS-PIA	U.S.	\$25,000.00
9	Grow More Farms: Supporting Small Farm Entrepreneursh	10/1/17-9/30/17	C&C of Honolulu	Hon	\$42,987.00
10	Parade of Farms at Kahumana	8/3/18-8/31/19	H.T.A	State	\$10,000.00
11	Parade of Farms Festival at Kahumana	1/1/19 -12/31/19	H.D.O.A.	State	\$6,000.00
12	Risk Management for Hawai'i Farmers	4/1/17-9/30/18	WERME (USDA-NIFA)	U.S.	\$48,801.00
13	Conservation Planning and Monitoring	4/1/17-12/31/17	C&C of Honolulu	Hon	\$30,000.00
14	Community Enrichment Program	10/25/17-8/31/18	H.T.A.	State	\$6,000.00
15	Community Enrichment Program	1/15/17-7/31/17	H.T.A.	State	\$6,285.00
16	Conservation Services for O'ahu Farms	4/1/17-12/31/17	C&C of Honolulu	Hon	\$20,000.00
17	Parade of Farms Sponsorship	3/15/18-1/15/19	H.D.O.A.	State	\$2,500.00
18					
19					
20					
21					
22					
23					
24					
25					
26					
27					
28					
29					
30					

## Application Submittal Checklist

*The following items are required for submittal of the grant application. Please verify and check off that the items have been included in the application packet.*

- 1) Certificate of Good Standing (If the Applicant is an Organization)
- 2) Declaration Statement
- 3) Verify that grant shall be used for a public purpose
- 4) Background and Summary
- 5) Service Summary and Outcomes
- 6) Budget
  - a. Budget request by source of funds ([Link](#))
  - b. Personnel salaries and wages ([Link](#))
  - c. Equipment and motor vehicles ([Link](#))
  - d. Capital project details ([Link](#))
  - e. Government contracts, grants, and grants in aid ([Link](#))
- 7) Experience and Capability
- 8) Personnel: Project Organization and Staffing

  
AUTHORIZED SIGNATURE

Mark Phillipson, Vice President  
PRINT NAME AND TITLE

1/17/19  
DATE