

Department of Commerce and Consumer Affairs

CERTIFICATE OF GOOD STANDING

I, the undersigned Director of Commerce and Consumer Affairs of the State of Hawaii, do hereby certify that

HEALTHY MOTHERS, HEALTHY BABIES COALITION OF HAWAII

was incorporated under the laws of Hawaii on 08/31/1992 ; that it is an existing nonprofit corporation; and that, as far as the records of this Department reveal, has complied with all of the provisions of the Hawaii Nonprofit Corporations Act, regulating domestic nonprofit corporations.

IN WITNESS WHEREOF, I have hereunto set my hand and affixed the seal of the Department of Commerce and Consumer Affairs, at Honolulu, Hawaii.

Dated: January 16, 2019

Director of Commerce and Consumer Affairs



**DECLARATION STATEMENT OF
APPLICANTS FOR GRANTS PURSUANT TO
CHAPTER 42F, HAWAII REVISIED STATUTES**

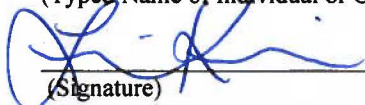
The undersigned authorized representative of the applicant certifies the following:

- 1) The applicant meets and will comply with all of the following standards for the award of grants pursuant to Section 42F-103, Hawaii Revised Statutes:
 - a) Is licensed or accredited, in accordance with federal, state, or county statutes, rules, or ordinances, to conduct the activities or provide the services for which a grant is awarded;
 - b) Complies with all applicable federal and state laws prohibiting discrimination against any person on the basis of race, color, national origin, religion, creed, sex, age, sexual orientation, or disability;
 - c) Agrees not to use state funds for entertainment or lobbying activities; and
 - d) Allows the state agency to which funds for the grant were appropriated for expenditure, legislative committees and their staff, and the auditor full access to their records, reports, files, and other related documents and information for purposes of monitoring, measuring the effectiveness, and ensuring the proper expenditure of the grant.
- 2) If the applicant is an organization, the applicant meets the following requirements pursuant to Section 42F-103, Hawaii Revised Statutes:
 - a) Is incorporated under the laws of the State; and
 - b) Has bylaws or policies that describe the manner in which the activities or services for which a grant is awarded shall be conducted or provided.
- 3) If the applicant is a non-profit organization, it meets the following requirements pursuant to Section 42F-103, Hawaii Revised Statutes:
 - a) Is determined and designated to be a non-profit organization by the Internal Revenue Service; and
 - b) Has a governing board whose members have no material conflict of interest and serve without compensation.

Pursuant to Section 42F-103, Hawaii Revised Statutes, for grants used for the acquisition of land, when the organization discontinues the activities or services on the land acquired for which the grant was awarded and disposes of the land in fee simple or by lease, the organization shall negotiate with the expending agency for a lump sum or installment repayment to the State of the amount of the grant used for the acquisition of the land.

Further, the undersigned authorized representative certifies that this statement is true and correct to the best of the applicant's knowledge.

Healthy Mothers Healthy Babies Coalition of Hawaii
(Typed Name of Individual or Organization)


(Signature)

January 18, 2019
(Date)

Lisa Kimura
(Typed Name) Executive Director
(Title)

Application for Grants

If any item is not applicable to the request, the applicant should enter "not applicable".

I. Certification – Please attach immediately after cover page

1. Certificate of Good Standing (If the Applicant is an Organization)

See Attachment

2. Declaration Statement

The applicant shall submit a declaration statement affirming its compliance with Section 42F-103, Hawaii Revised Statutes. ([Link](#))

Healthy Mothers Healthy Babies Coalition of Hawaii affirms its compliance with Section 42F-103, Hawaii Revised Statutes. (Attached.)

3. Public Purpose

The applicant shall specify whether the grant will be used for a public purpose pursuant to Section 42F-102, Hawaii Revised Statutes. ([Link](#))

Public Purpose

Healthy Mothers Healthy Babies Coalition of Hawaii (HMHB) will use this grant for a public purpose pursuant to Section 42F-102, Hawaii Revised Statutes.

The name of requesting organization:

Healthy Mothers Healthy Babies Coalition of Hawaii

The public purpose for the grant:

To decrease the rate of infant mortality, and to provide low-income mothers in Hawaii with education and resources on prenatal and postpartum health support services, Healthy Mothers Healthy Babies (HMHB) provides a comprehensive Hawaii Cribs for Kids program and wraparound MothersCare Services. This program and its components provide safe sleep education to high-risk families based on the most current AAP Safe Sleep Guidelines, as well as a free GRACO Pack 'n Play travel crib for families who cannot otherwise afford to provide their baby with a safe place to sleep. In addition, this program provides referrals directly to maternal mental health counselors to help reduce the common incidence of postpartum depression in this population; impacting health outcomes for mothers and babies.

The services to be supported by the grant:

This grant will help support additional partners to refer high-risk, low-income participants to the program, in order to meet the demand to serve more families. Funding will purchase cribs and distribute learning materials, travel to neighbor island sites, enhance data collection and reporting, provide one year of follow-up case management, and increase referrals to wraparound MothersCare Services, including a confidential phone line and postpartum counseling services.

The target group/population:

HMHB partners with numerous agencies on all islands to target populations with the highest risk factors for poor birth outcomes and infant mortality, including: low-income (all applicants qualify for WIC or Medicaid), low education level (64% of applicants have a high school diploma or less), substance abuse disorder during pregnancy, and races/ethnicities with statistically higher infant mortality rates including Native Hawaiian, Black, and other Pacific Islanders (42% of referrals are Native Hawaiian/Part Native Hawaiian). Participants with other risk factors, including homelessness and domestic violence, have priority entry to the program.

Our goal is to ensure that babies from disparate socioeconomic populations at highest risk for sleep-related death and Shaken Baby Syndrome (SBS) are served by this program.

The cost of the grant and the budget.

We are requesting \$150,000 for this Grant in Aid to augment the total program budget of \$237,000.

II. Background and Summary

1. Applicant's Background

Healthy Mothers Healthy Babies Coalition of Hawaii (HMHB) is a statewide nonprofit 501(c)(3) organization established in 1992; dedicated to improving Hawaii's maternal, child and family health through collaborative efforts in public education, advocacy and partner development. HMHB believes in equal access to quality health care and the importance of a collective voice to facilitate change.

Over the past 27 years of service, HMHB has built strong partnerships with maternal and child health organizations, community leaders and stakeholders throughout the state, bolstering partnerships with providers, and establishing a reputation for quality programs and resources. HMHB actively collaborates with partners to convene the Perinatal Advocacy Network and the Hawaii Maternal & Infant Health Collaborative; advocating for women's and reproductive health, and distributing educational materials statewide to increase knowledge and quality of care.

Beginning in 2013, HMHB began offering direct services, with a special focus on reaching low-income, high-risk women and families on all islands. The Hawaii Cribs for Kids program and wraparound MothersCare Services (outlined in this application) have numerous community stakeholders who strongly support the program and its proven success, and eagerly anticipate more clients being served by HMHB.

2. Goals & Objectives

One child every other week in Hawaii, and more than 3,500 infants nationwide die from sudden unexpected infant deaths (SUID) every year; approximately half attributed to Sudden Infant Death Syndrome (SIDS). The objective of HMHB's program "Hawaii Cribs for Kids" is to help parents become more knowledgeable and confident in their parenting skills; protecting their children, as well as elevating the level of community education on safe sleep.

In Hawaii, SIDS accounts for 41% of all post-neonatal deaths in the State. The goal of this important program is to provide access to all women in Hawaii to reduce the incidence of sleep-related deaths, the most common cause of accidental infant deaths in Hawaii, by providing parents with life-saving information and a free Pack 'n Play crib so each baby has a safe place to sleep.

This program is about much more than safe sleep education, however, and in addition to reducing infant mortality, it presents exciting, new opportunities to bridge participants to broader support services throughout their pregnancy and baby's first year of life.

Reaching program participants with a holistic approach during pregnancy and baby's first year provides parents with access to timely services and information for a healthy start in life. Participants will receive an introduction to MothersCare Services, including comprehensive phone support and referrals to resources and information, as well as referrals to onsite counseling services for postpartum depression (PPD) and other critical maternal mental health needs. Participants will also be reminded of the availability of this and other perinatal health services during postpartum follow-up calls.

Additionally, using the Cribs for Kids program as a means to provide education, engagement and disseminate research to maternal child health professionals (including HMHB's Cribs for Kids partners) will help increase statewide health care provider education levels.

3. Public Purpose and Need Served

Many babies in Hawaii do not currently have safe sleeping environments, putting them at serious risk of accidental injury or death. The following facts are from the most recent Hawaii Pregnancy Risk Assessment Monitoring System (PRAMS) survey (Hayes D, 2018).

- **Sleep Position:** Approximately one-quarter (24.3%) of babies in Hawaii are most often laid to sleep in high-risk sleep positions (either on their side or stomach)

- **Bed-Sharing:** one-third (33.9%) of Hawaii's infants "always" or "often" sleep in the same bed with another family or household member. An additional 19.9% of Hawaii's infants "sometimes" do.
- **Sleep Environment:** only 34.2% of babies in Hawaii usually sleep in an environment that meets all of the AAP's recommendations for a safe sleep environment. Nearly two-thirds (65.8%) usually sleep in an environment with at least one of the following risk factors:
 - 19.6% sleep with pillows
 - 31.3% sleep with bumper pads
 - 19.6% sleep with plush blankets
 - 4.3% sleep with stuffed toys
 - 19.3% do not sleep in a crib or portable crib
 - 14.7% do not sleep on a firm or hard mattress

Additionally, many mothers are suffering from the effects of postpartum mood disorders, often not seeking treatment because they feel stigmatized, or that their symptoms are not severe enough (Kimura, 2014).

In fact, according to PRAMS data on postpartum depression (Hayes D S. R., 2010), about 1 out of 7 women (14.5%) with a recent live birth reported Self-Reported Postpartum Depressive Symptoms (SRPPD), with Pacific Islander, Samoan, Hawaiian, Filipino, and Korean women experiencing the highest SRPPD rates. And although PPD affects all women, these women were also typically:

- younger
- less educated
- not married
- insured by Medicaid/QUEST
- had an unintended pregnancy
- smoked and used illicit drugs in pregnancy
- reported intimate partner violence
- participated in WIC during prenatal care
- have had a preterm birth

All of these risk factors mirror the profile of Cribs for Kids participants, and present an ideal opportunity to continue to support their social, emotional and health needs.

HMHB conducts follow-up calls with participants when their baby turns three months old, and again before their baby turns one year old; tracking their health and well-being. This allows for staff to revisit important health topics discussed during the class and provide resources and/or referrals to any wraparound services, including treatment for PPD, breastfeeding, or other support needs.

Untreated PPD can alter a mother's interaction with her child, and is linked to a number of negative consequences for mothers, babies, and families - for example, difficult maternal-infant bonding, cognitive and emotional delays for children, an increased risk of maternal substance abuse and increased risks of child abuse and neglect. (Abrams, 2008)

With an alarmingly high rate of women in the Cribs for Kids program suffering from PPD (providers estimate up to 75% of referred clients are affected), HMHB offers maternal mental health services onsite with licensed clinical social workers who specialize in postpartum mood disorders, in order to expedite the pathway to support and provide help quickly and efficiently.

In addition to providing resources, HMHB intends to begin screening women for PPD during postpartum follow-up calls to proactively help identify women's needs and to make referrals to treatment, as necessary. Many women are simply not ready to acknowledge or disclose their mental health needs until asked at the right time, by a trusted provider. We anticipate significant growth in this area over the next year, with primary referrals and growth from Cribs for Kids participants.

Given the geographic challenges associated with health care providers and agencies dispersed across the Hawaiian Islands, HMHB intends to continue disseminating safe sleep and PPD screening information and best practices to the 20 statewide maternal and child health providers, community agencies and high school teen parent programs that collaborate on Cribs for Kids.

By creating sustainable, effective ties between maternal health providers, nonprofit agencies and community members, we help create momentum towards a healthier state with lower mortality rates for mothers and babies.

4. Target Population

Our goal is to ensure that babies from disparate populations at highest risk for SUID/SIDS, Shaken Baby Syndrome (SBS) and their mothers at risk for PPD, are served by this program.

HMHB partners with 20 agencies and health centers on all islands that serve the target population of pregnant women with the highest risk factors, including:

- low-income (all applicants qualify for WIC or QUEST/Medicaid)
- low education level (64% of applicants have a high school diploma or less)
- substance use disorder during pregnancy
- homelessness
- Native Hawaiian, Black, and other Pacific Islanders with higher infant mortality rates (42% of referrals are Native Hawaiian/Part Native Hawaiian)
- Maternal depression/mental health needs
- otherwise identified infant health concerns

Furthermore, women's health stakeholders and other professional providers directly related to improving the health status of women and babies are served with education, information and a quality referral source for their clients needing PPD counseling services.

5. Geographic Coverage

Women across the state should be able to access a Cribs for Kids class, no matter which island she resides, as we have 12 class sites on the six main islands.

Prenatal case managers and social workers from the following 20 partner agencies have been trained on how to screen participants for Cribs for Kids; submit applications to HMHB for potential participants; and refer patients to other HMHB services.

- **Oahu:** Waianae Coast Comprehensive Health Center, INPEACE, Queens Medical Center, Kapiolani Medical Center, PACT, Catholic Charities Hawaii, Waimanalo Health Center, Marine Corps New Parent Support Program and WIC
- **Maui:** Maui Family Support Services, Maui High School and Hana Health
- **Kauai:** WIC, West Kauai Medical Center, Hua Moon Women's Health and Wilcox Medical Center
- **Big Island:** West Hawaii Community Health Center and Bay Clinic
- **Molokai:** Molokai General Hospital-Women's Health Center
- **Lanai:** Lanai Community Health Center, Maui Family Support Services

III. Service Summary and Outcomes

1. Scope of work, tasks and responsibilities

Cribs for Kids consists of a one-hour interactive educational session on risk prevention including how to create a safe sleep environment and reduce significant SIDS risk factors. The curriculum is based on the American Academy of Pediatrics (AAP) safe sleep recommendations and include both direct factors (e.g. – use of blankets and pillows in the crib; placing baby to sleep on her stomach; placing toys in the crib) and indirect health risks (e.g. – formula feeding instead of breastfeeding; smoking in the same home as an infant; timely immunizations) and identifies how each caregiver can eliminate these risk factors in their home.

Additionally, The Period of PURPLE Crying®, a child abuse prevention program developed by the National Center on Shaken Baby Syndrome (SBS) was added into the Cribs for Kids program. This information is part of an evidence-based SBS prevention plan aimed to support caregivers in their understanding of early increased infant crying and to reduce the incidence of SBS/abusive head trauma.

Hawaii Cribs for Kids is the first and only of its kind in the State and has been extremely well-received by partner health organizations and participants. This program is the first to offer both a safe sleeping environment (free Pack 'n Play crib) in addition to culturally-appropriate, family-oriented safe sleep education, support and postpartum follow-up calls to high risk, low-income families on Oahu, Maui, Lanai, Molokai, Kauai and Hawaii Island.

It is essential that new and expectant mothers are provided with timely social-emotional support during this uniquely challenging transition in life and no parent should ever be faced with the accidental death of their infant. In addition to increased rates of infant mortality; low-income, high-risk women in our target population experience a prevalent incidence of PPD, which can harm a mother's interaction with her baby, and impair a baby's ability to form a secure attachment.

For these reasons, HMHB's Cribs for Kids program helps ensure that parents know how to make the best, safest choices for their baby; and MothersCare Services provide time-sensitive resources and direct services for professional counseling to help combat PPD. This grant will help connect participants to these services using a consistent, patient-centered approach during pregnancy and beyond.

Furthermore, using the successful Cribs for Kids program as a vessel to refer an increasing audience of at-risk mothers to maternal mental health services is an innovative new way to serve more women in Hawaii during and after pregnancy.

2. Projected timeline

Activities	Months												
	1	2	3	4	5	6	7	8	9	10	11	12	
Accept referrals and schedule parents for classes	X	X	X	X	X	X	X	X	X	X	X	X	X
Conduct ongoing training with partner agencies	X	X	X	X	X	X	X	X	X	X	X	X	X
Identify key staff within each agency to facilitate classes and promote services	X	X	X	X	X	X	X	X	X	X	X	X	X
Distribute HMHB infant health materials and offer health provider trainings	X	X	X	X	X	X	X	X	X	X	X	X	X
Facilitate classes at each location (statewide; six islands)	X	X	X	X	X	X	X	X	X	X	X	X	X
Conduct 3-month and 12-month postpartum check-in calls with past participants. Participants will be asked about safe sleep practices, and screened for postpartum depression (PPD) and referred to treatment and/or any relevant services or resources.	X	X	X	X	X	X	X	X	X	X	X	X	X
Refer Cribs for Kids participants to MothersCare services for support for PPD and other maternal mental health needs. (Utilizing HMHB's LCSWs who specialize in maternal mental health)	X	X	X	X	X	X	X	X	X	X	X	X	X
Promote the MothersCare phone line to Cribs for Kids participants by emphasizing availability of MothersCare resources, and	X	X	X	X	X	X	X	X	X	X	X	X	X

by providing case management options to mothers in need of more comprehensive health services													
Analyze results of the project and draft final report	X	X	X	X	X	X	X	X	X	X	X	X	X

3. Quality Assurance and Evaluation Plan

There are three parts to evaluating the quality of Cribs for Kids program results:

- **Knowledge:** participants are given a 20-question quiz on safe sleep practices prior to, and immediately following, completion of the educational class. Questions pertain to general awareness and preventative measures to create a safe sleep environment and how to identify unsafe or hazardous items in a sample crib. This test measures participants’ change in knowledge regarding safe sleep and the effectiveness of the class in increasing knowledge of risks and protective factors.
- **Retention and behavior change:** participants are asked to share information on their baby’s health status and the daily safe sleep practices at three-month and one-year follow up calls. This measures the participants’ knowledge retention and how successfully the class created behavior changes (if parents continue following safe sleep practices). This also provides the opportunity to reinforce information and provide referrals.
- **SUID/SIDS rates:** at three months and one year, the health status of the baby is monitored to track the SUID/SIDS rates among participants to measure the effectiveness of the program.

Moving forward in FY19-20, HMHB intends to begin screening women for PPD during postpartum follow-up calls. By using a clinical screening tool, we should be able to identify more women in need of support services, and refer them to our MothersCare Services; specifically, maternal counseling support.

Outcomes from these counseling sessions will be evaluated to measure efficacy of treatment and to make referrals to other necessary health and social support services.

4. Measure(s) of effectiveness to be reported

HMHB will provide quarterly Cribs for Kids reports that include a thorough analysis of the program’s achievements and accomplishments. These reports will contain data specific to each island on: how many participants have applied, how many applicants participated (and received a crib), how many classes were conducted, how many 3-month and 1-year follow-up calls were made and how well participants are adhering to safe sleep practices. In addition, all of the data will be formatted into graphs and charts, for easy comprehension and non-identifying information, and include the number of women referred to wraparound MothersCare Services (and other resources).

IV. Financial

Budget

- 1. The applicant shall submit a budget utilizing the enclosed budget forms as applicable, to detail the cost of the request.**
 - a. Budget request by source of funds ([Link](#))
 - b. Personnel salaries and wages ([Link](#))
 - c. Equipment and motor vehicles ([Link](#))
 - d. Capital project details ([Link](#))
 - e. Government contracts, grants, and grants in aid ([Link](#))

- 2. The applicant shall provide its anticipated quarterly funding requests for the fiscal year 2020.**

Quarter 1	Quarter 2	Quarter 3	Quarter 4	Total Grant
37,500	37,500	37,500	37,500	150,000

- 3. Listing of all other sources of funding we are seeking for fiscal year 2020:**

HMHB will seek supplemental funding for the Cribs for Kids program from the Atherton Family Foundation, the Harry & Jeannette Weinberg Foundation, the Oahu and Kauai Island Charity Walks, The Fred Baldwin Foundation and the Hawaii State Department of Health.

- 4. Listing of all state and federal tax credits it has been granted within the prior three years.**

HMHB has received zero state and federal tax credits within the past three years.

- 5. Listing of all federal, state, and county government contracts, grants, and grants in aid granted within the prior three years and will be receiving for fiscal year 2020 for program funding.**

HMHB received a state grant in aid for this program in FY2016. Other private foundation grants include: Atherton Family Foundation, Fred Baldwin Memorial Foundation, Charity Walk (Kauai and Oahu). Currently, we are awaiting confirmation of funding sources for FY2020.

- 6. Balance of unrestricted current assets as of December 31, 2018.**

HMHB's balance of unrestricted assets as of 9-30-18: \$276,369. HMHB's balance of unrestricted assets as of 12-31-18 will be available after an independent financial review is conducted on 1-30-19.

V. Experience and Capability

1. Necessary Skills and Experience

HMHB currently has three full time and three part-time staff members, and two licensed clinical social workers with ample maternal, child and public health experience and the leadership skills necessary to successfully carry out the requirements of the proposed project.

The Cribs for Kids program has been operating with increasing capacity and service areas since the launch in January 2013; demonstrating both the commitment of the staff and organization, as well as the longevity of the program and its community investment.

In addition, HMHB's two maternal mental health counselors are both Licensed Clinical Social Workers (LCSW) with years of experience counseling women and mothers, and have certifications in postpartum mental health counseling. This service began onsite at HMHB in September 2018 and program participants will soon be screened for PPD during follow-up calls.

HMHB staff and partners are familiar with the requirements necessary to successfully conduct the proposed work. Previous Hawaii Cribs for Kids classes have successfully demonstrated an increased awareness of risk factors for SIDS among participating high-risk low-income pregnant women and their families, with results including a +26% increase in knowledge between pre- and post-class tests.

Additionally, HMHB has expertise providing numerous community services in collaboration with partner organizations that serve women and infants, including:

- A free MothersCare phone line designed to help pregnant women, new mothers and their families find the information and resources necessary to have a healthy pregnancy, birth and baby.
- The Piko Pals new parent support program, 12 weeks of social and emotional support for parents of newborns, led by a trained group facilitator.
- Quarterly trainings for perinatal support service providers at community health clinics statewide on topics directly relating to improving the health of pregnant women, new mothers and infants.
- Creation and distribution of culturally-appropriate educational materials for Hawaii's pregnant women, mothers and their families (including topics such as safe sleep/SIDS prevention, Fetal Alcohol Spectrum Disorders (FASD), Postpartum Depression (PPD), breastfeeding, and nutrition, as well as a "Healthy & Hapai" educational pregnancy calendar to help women keep track of their prenatal appointments and to find resources for a healthy pregnancy).
- Coordination of quarterly Perinatal Advocacy Network to increase awareness of perinatal issues in Hawaii, expand advocacy efforts for perinatal health issues and legislative actions, and increase networking and collaborative partnerships among state perinatal health providers.

- Maintaining a dynamic online perinatal resource directory searchable by service and location.
- Updating families and providers on maternal and child health news, and local resources/events in the maternal and child health community via social media.
- Promotion of the Text4baby program, providing free text messages to alert expectant and new parents of health information throughout their pregnancy and their baby's first year.

2. Facilities

Cribs for Kids classes are hosted at 12 well-established partner sites on each island, in addition to classes conducted at HMHB's spacious conference room at the Kukui Center in downtown Honolulu. Each ADA-approved location provides ample room for applicants to learn, in addition to allowing facilitators to set up the presentation and the sample Pack 'n Play for demonstration purposes.

Since geographic location and transportation can be a barrier to accessing services, HMHB strives to help support clients by providing multiple class locations per island. Facilities that host the classes are located in local regions where the target populations reside. Each site, including HMHB's office location, is equipped with audio/visual capabilities to conduct the educational sessions, as well as comfortable space for at least 10 participants per class, and includes parking.

There are also two, private offices at HMHB's downtown location where clients can be seen for counseling services. HMHB ensures each client's comfort in maintaining their privacy and confidentiality, and (secure) telehealth appointments can be conducted via Skype for neighbor island counseling clients.

VI. Personnel: Project Organization and Staffing

1. Proposed Staffing, Staff Qualifications, Supervision and Training

HMHB currently has three full-time and three part-time staff members and two licensed clinical social workers with ample maternal and child health experience and the leadership skills, including group support experience, knowledge, skills, and abilities necessary to successfully carry out the requirements of the proposed project. A portion of each of the three full-time staff members' duties are dedicated to the program, along with a portion of the other part-time and clinical staff members' duties.

All members of the program staff have a relevant university degree and/or experience in public health, social work, and/or nutrition, are members of the Safe Sleep Hawaii Coalition, and receive ongoing training to ensure subject matter expertise and effective communication skills. HMHB's executive director, Lisa Kimura, MBA, is certified as a parent coach, a lactation educator, and has a background in maternal health education and early childhood development. Lisa is also a mother of three and well-acquainted with the development and implementation of this program, as well as the education and support that families collectively need. The executive director provides oversight to the

onsite therapists and clinical services director, Kari Wheeling, RN, CNM, and management of the Program Coordinator, Program Assistant and Intern.

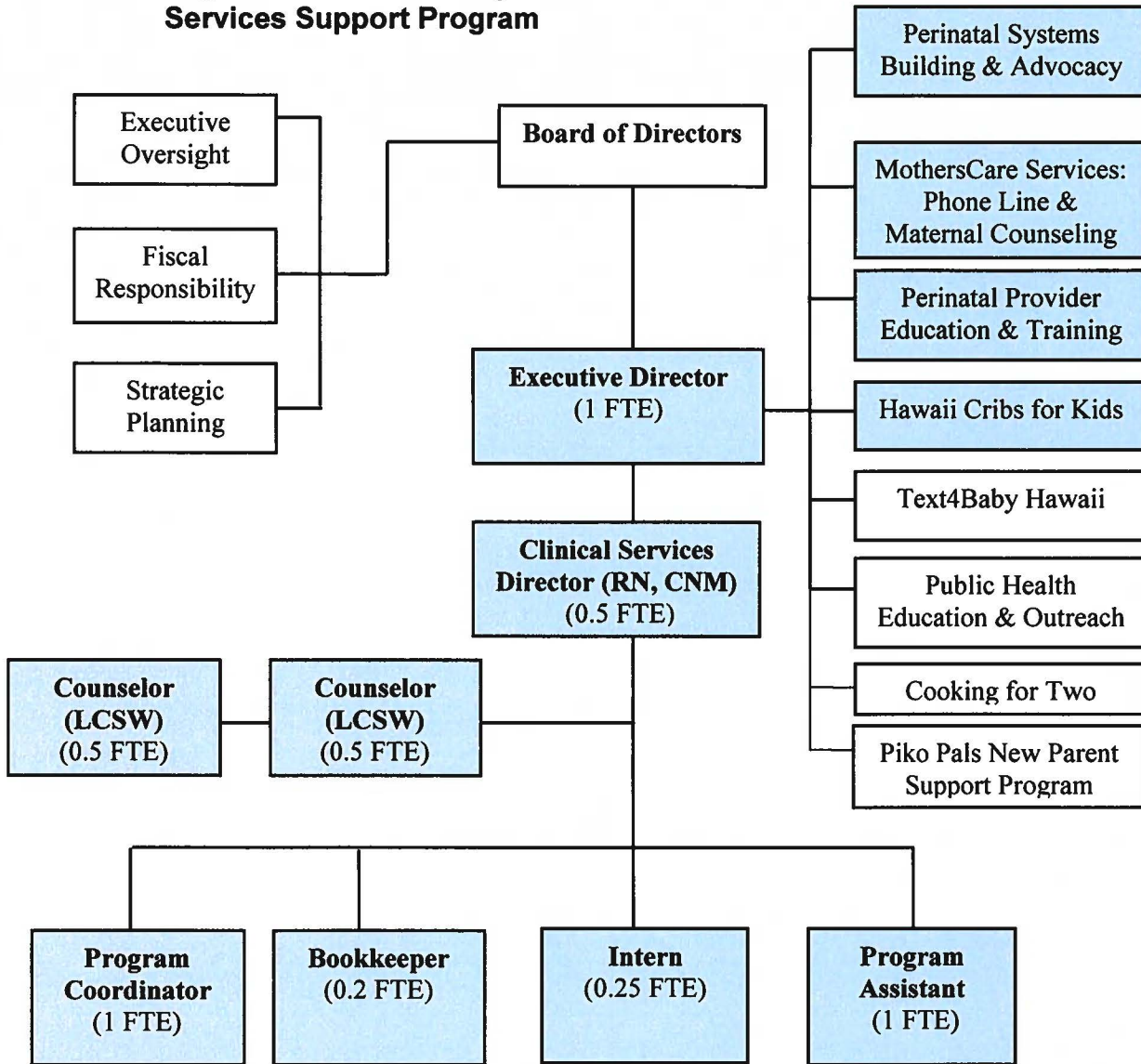
Each of HMHB's two maternal mental health therapists are independently credentialed and licensed as clinical social workers. Rachel Ebert, LCSW, enjoys working with individuals struggling before, during and after pregnancy. Rachel has worked with families and individuals in a variety of settings for over 15 years and through Postpartum Support International and 2020Mom, she received a Maternal Mental Health training certificate and is currently becoming certified to counsel women on pregnancy and infant loss and birth trauma. Aside from her work with early childhood, Rachel's experience includes work with adjudicated adolescents and adults with serious mental illness and mothers in treatment for substance abuse.

Jess Logan, LCSW, works with women before, during and after pregnancy to address stress reduction, relationship issues, depression, anxiety, trauma, Obsessive-Compulsive Disorder (OCD) and Post-Traumatic Stress Disorder (PTSD). She also offers grief counseling for miscarriage or neonatal loss. Jess focuses on women's mental health and offers individual therapy sessions in the office or via telemedicine (video conference from home) and "walk and talk" therapy, which is an option to meet at an outdoor location. Jess has worked as a clinical therapist in the mental health field for over 10 years, including in private practice, at Kaiser Behavioral Health, the Hawaii State Judiciary and the LGBTQ Center of New York. Therapy techniques include Interpersonal Therapy, Cognitive Behavioral Therapy, Supportive Psychotherapy and EMDR. In addition to her clinical training through a Master's program at New York University, she has a specialized certification in Perinatal Mental Health through Postpartum Support International.

The principal responsibilities of Katelyn McIntosh, the program coordinator, include: conducting/leading aspects of the project with minimal guidance and within budget and time constraints; initiating contact with and establishing a group of community partners to screen applicants and provide host sites for training classes; conducting monthly training sessions for participants; developing and administering program materials and tests; contributing to marketing and project development and planning activities/contracting decisions for such activities; participation in community health fairs; distribution of materials to meet population needs. Katelyn, in addition to being familiar with the local maternal and child health system is well versed in community collaboration, project management, communication and leadership. Receiving funding for this project will enhance the activities and resources that the program coordinator has already established in the community.

Vivian Choy, program assistant, is responsible for data collection and organization, follow-up and data collection from participants at three months and one year postpartum, and properly documenting reports and evaluations, with support on data collection and follow-up phone calls from the public health Intern.

2. Organizational and Program Chart – Cribs for Kids and MothersCare Services Support Program



3. Compensation

Annual salaries paid to the three highest paid employees of the organization by position:

- Executive Director: \$80,000
- Clinical Services Director: \$75,000
- Program Coordinator: \$45,000

VII. Other

1. Litigation

HMHB is not a party to any pending litigation or outstanding judgements.

2. Licensure or Accreditation

HMHB is uniquely qualified to conduct this program, having developed, implemented and sustained Cribs for Kids for six years, growing to serve six islands. The MothersCare Line was established 20 years ago, and onsite counseling services for PPD were added in 2018.

HMHB is an official partner of the national Cribs for Kids program, as well as certified to administer “The Period of PURPLE Crying” educational materials to prevent child abuse and neglect.

Our clinical services director, who oversees our MothersCare Services is a licensed registered nurse and certified nurse midwife, and our counselors are licensed clinical social workers.

No specific licensure or accreditation is needed, relevant to this request, though we are currently conducting a program evaluation with the University of Hawaii’s Center on the Family for Hawaii Cribs for Kids to become an evidence-based program for replicability purposes.

3. Private Educational Institutions

This grant will not be used to support or benefit a sectarian or non-sectarian private educational institution.

4. Future Sustainability Plan

The Hawaii Cribs for Kids program has grown to serve all eligible women across the state and has been supported and sustained since 2013 through a combination of grants from private foundations, the Hawaii State Department of Health, and a 2013 and 2015 State Grant in Aid. As a uniquely invaluable program for pregnant women and families in Hawaii, HMHB continues to seek grant funding to share, promote, and administer Hawaii Cribs for Kids statewide, with wraparound administered through postpartum follow-up calls and MothersCare Services.

HMHB added MothersCare Services, as well as the opportunity to screen participants for PPD during postpartum calls, after identifying the under-served need. This presents a significant opportunity for an area of growth, which is currently being pursued.

HMHB has also presented program data and outcomes at five local, regional and national public health conferences over the past year. The level of sustained interest in the program helps to ensure the longevity of the program, as well as attract funding sources to help facilitate the growth and outreach of Cribs for Kids.

Currently there is more demand for the program than capacity to serve, so HMHB is hopeful that new partnerships will facilitate sustainability. Additionally, because our PPD counselors are licensed to bill insurance (including QUEST/Medicaid) for services, we ensure long-term financial growth and sustainability by increasing referrals through this program.

The Hawaii Cribs for Kids program curriculum increases safe sleep promotion and supports child abuse and neglect prevention efforts through the inclusion of Period of PURPLE Crying training. This segment of each Cribs for Kids class helps ensure parents learn skills to help protect their infant from Shaken Baby Syndrome, reducing incidences of child abuse.

As a member of the Hawaii Maternal Infant Health Collaborative (HMIHC), HMHB also continues to collaborate with public and private agencies to set objectives to decrease maternal and infant mortality. HMHB will seek funding opportunities through HMIHC's supportive channels, with objectives of: increasing infant safe sleep practices to reduce sleep-related deaths; decreasing smoking during pregnancy; decreasing the proportion of low birth weight infants; and increasing the duration and exclusivity of breastfeeding rates.

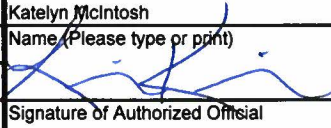
Works Cited

- Abrams, L. a. (2008). *Symptom recognition, informal and formal help-seeking for PPD symptoms, and attitudes toward mental health services among low-income mothers from ethnic minority backgrounds*. Los Angeles: UCLA School of Public Affairs.
- Hayes D, S. R. (2010). *"Postpartum Depression Fact Sheet"*. Honolulu: Hawaii State Department of Health: Family Health Services Division.
- Hayes D, Y. A. (2018). *"Infant Safe Sleep Fact Sheet"*. Honolulu: Hawaii State Department of Health: Family Health Services Division.
- Kimura, L. a. (2014). *An Assessment of Parents' and Providers' Knowledge and Use of Postpartum Depression Support Resources in Hawaii*. Honolulu: Healthy Mothers Healthy Babies.

BUDGET REQUEST BY SOURCE OF FUNDS

Period: July 1, 2019 to June 30, 2020

Applicant: Healthy Mothers Healthy Babies Coalition of Hawaii

BUDGET CATEGORIES	Total State Funds Requested (a)	Total Federal Funds Requested (b)	Total County Funds Requested (c)	Total Private/Other Funds Requested (d)
A. PERSONNEL COST				
1. Salaries	88,280			39,499
2. Payroll Taxes & Assessments	8,629			4,200
3. Fringe Benefits	8,524			5,200
TOTAL PERSONNEL COST	105,433			48,898
B. OTHER CURRENT EXPENSES				
1. Airfare, Inter-Island	650			1,824
2. Insurance	2,245			3,255
3. Lease/Rental of Equipment	282			0
4. Lease/Rental of Space	10,610			16,163
5. Staff Training	500			500
6. Supplies	16,000			2,671
7. Telecommunication/Warmline	1,000			1,559
8. Contractual Services - Administrative	6,880			1,880
9. Contractual Services - Subcontracts	3,900			2,900
10. Mileage	450			500
11. Postage, Freight & Delivery	100			0
12. Publication & Printing	970			3,930
13. Staff Training	350			1,150
14. Subsistence/Per Diem	300			1,500
15. Transportation/Mileage	330			270
16.				
17.				
18.				
19.				
20.				
TOTAL OTHER CURRENT EXPENSES	44,567			38,102
C. EQUIPMENT PURCHASES				
D. MOTOR VEHICLE PURCHASES				
E. CAPITAL				
TOTAL (A+B+C+D+E)	150,000			87,000
SOURCES OF FUNDING		Budget Prepared By:		
(a) Total State Funds Requested	150,000	Katelyn McIntosh 808.737.5805		
(b) Total Federal Funds Requested		Name (Please type or print) Phone		
(c) Total County Funds Requested				
(d) Total Private/Other Funds Requested	87,000	Signature of Authorized Official Date		
TOTAL BUDGET	237,000	Lisa Kimura, Executive Director Name and Title (Please type or print)		

BUDGET JUSTIFICATION - EQUIPMENT AND MOTOR VEHICLES

Period: July 1, 2019 to June 30, 2020

Applicant: Healthy Mothers Healthy Babies

DESCRIPTION EQUIPMENT	NO. OF ITEMS	COST PER ITEM	TOTAL COST	TOTAL BUDGETED
N/A			\$ -	
			\$ -	
			\$ -	
			\$ -	
			\$ -	
TOTAL:				

JUSTIFICATION/COMMENTS:

DESCRIPTION OF MOTOR VEHICLE	NO. OF VEHICLES	COST PER VEHICLE	TOTAL COST	TOTAL BUDGETED
N/A			\$ -	
			\$ -	
			\$ -	
			\$ -	
			\$ -	
TOTAL:				

JUSTIFICATION/COMMENTS:

BUDGET JUSTIFICATION - CAPITAL PROJECT DETAILS

Period: July 1, 2019 to June 30, 2020

Applicant: Healthy Mothers Healthy Babies

FUNDING AMOUNT REQUESTED						
TOTAL PROJECT COST	ALL SOURCES OF FUNDS RECEIVED IN PRIOR YEARS		STATE FUNDS REQUESTED	OTHER SOURCES OF FUNDS REQUESTED	FUNDING REQUIRED IN SUCCEEDING YEARS	
	FY: 2017-2018	FY: 2018-2019	FY:2019-2020	FY:2019-2020	FY:2020-2021	FY:2021-2022
PLANS						
LAND ACQUISITION						
DESIGN						
CONSTRUCTION						
EQUIPMENT						
TOTAL:						
JUSTIFICATION/COMMENTS:						

GOVERNMENT CONTRACTS, GRANTS, AND / OR GRANTS IN AID

Applicant: Healthy Mothers Healthy Babies

Contracts Total: 10,000

55,059

	CONTRACT DESCRIPTION	EFFECTIVE DATES	AGENCY	GOVERNMENT ENTITY (U.S. / State / Haw / Hon / Kau / Mau)	CONTRACT VALUE
1	Cribs for Kids funding: classes and cribs	9/1/2018 - 10/31/2018	Hawaii State Department of Health-MCHB	State	55,059
2					
3					
4					
5					
6					
7					
8					
9					
10					
11					
12					
13					
14					
15					
16					
17					
18					
19					
20					
21					
22					
23					
24					
25					
26					
27					

Application Submittal Checklist

The following items are required for submittal of the grant application. Please verify and check off that the items have been included in the application packet.

- 1) Certificate of Good Standing (If the Applicant is an Organization)
- 2) Declaration Statement
- 3) Verify that grant shall be used for a public purpose
- 4) Background and Summary
- 5) Service Summary and Outcomes
- 6) Budget
 - a. Budget request by source of funds ([Link](#))
 - b. Personnel salaries and wages ([Link](#))
 - c. Equipment and motor vehicles ([Link](#))
 - d. Capital project details ([Link](#))
 - e. Government contracts, grants, and grants in aid ([Link](#))
- 7) Experience and Capability
- 8) Personnel: Project Organization and Staffing



AUTHORIZED SIGNATURE

Lisa Kimura, Executive Director 1/18/19

PRINT NAME AND TITLE

DATE