

STATE OF HAWAII  
DEPARTMENT OF HEALTH  
P. O. Box 3378  
Honolulu, HI 96801-3378  
doh.testimony@doh.hawaii.gov

**Testimony COMMENTING on S.B. 108  
RELATING TO LAW ENFORCEMENT**

SENATOR CLARENCE K. NISHIHARA, CHAIR  
SENATE COMMITTEE ON PUBLIC SAFETY, INTERGOVERNMENTAL, AND  
MILITARY AFFAIRS

Hearing Date: February 7, 2017

Room Number: 229

1 **Fiscal Implications:** None

2 **Department Testimony:** The Department of Health (DOH) applauds the intent of this bill to  
3 incorporate the principles of the Law Enforcement Assisted Diversion (LEAD) approach into  
4 state and county law enforcement agencies. The DOH welcomes the opportunity to support law  
5 enforcement officers and assist with any needed training on LEAD as well helping to ensure  
6 access to a network of community resources in order to assess an alleged offender's interest and  
7 eligibility for LEAD and to make judicious referrals to the appropriate substance abuse and  
8 mental health treatment programs. The DOH's Behavioral Health Administration maintains a  
9 broad network of contracted and direct services that include substance abuse and mental health  
10 treatment, case management, housing support, psychological counseling, and employment  
11 training.

12 The DOH recognizes that cross-departmental coordination is the most effective approach  
13 to addressing some of Hawaii's most complex social issues such as homelessness, substance  
14 abuse and mental illness and is committed to supporting those efforts. The Department agrees  
15 with Section 1 of S.B. 108 which states "The legislature finds that improving public safety and  
16 public order and reducing future criminal behavior individuals engaged in low-level offenses is a  
17 worthwhile endeavor". In November 2016, the DOH Alcohol and Drug Abuse Division  
18 conducted a Request For Information (RFI) to gather community feedback related to the need,  
19 feasibility and capacity of the social service system to implement a pilot project modeled after

1 LEAD in other jurisdictions. Responses from community providers indicate both a need for this  
2 type of project in the community and a willingness on the part of community providers to assist  
3 with implementation. One provider, Community Health Outreach Work (CHOW Project) has  
4 already begun to develop a “LEAD Hui” consisting of more than twenty (20) community  
5 organizations who are committed to supporting LEAD in Hawaii.

6 The Department also notes that LEAD is consistent with efforts of the Governor’s  
7 Coordinator on Homelessness to address chronic homelessness in the state. The State has  
8 adopted a comprehensive framework to address homelessness, which includes a focus on three  
9 primary leverage points – affordable housing, health and human services, and public safety. All  
10 three of these leverage points must be addressed to continue forward momentum in addressing  
11 the complex issue of homelessness. The DOH continues to follow the lead of the Homeless  
12 Coordinator to ensure that efforts are synchronized in support of the State’s comprehensive  
13 framework to address homelessness across the system of care. The implementation of the LEAD  
14 approach will contribute to the State’s strategy in this area by connecting chronically homeless  
15 individuals to shelter and other social services.

16 The Department believes that a LEAD approach can serve to supplement and enhance  
17 programs and services currently provided by the DOH and the Department of Public Safety and  
18 decrease burdens on the State’s judicial and law enforcement systems by directing substance  
19 abusing and mentally ill individuals, particular the chronically homeless, to behavioral health  
20 care services in the community. The LEAD approach can interface with other similar efforts,  
21 such as the Community Outreach Court pilot and the DOH Jail Diversion Program, to divert  
22 individuals away from the criminal justice system at different points in the process – pre-arrest,  
23 post-arrest, and after adjudication.

24 The Executive Budget includes an appropriation to the DOH to support a LEAD pilot  
25 program, and asks for the Legislature’s support of the Executive Budget request.

26 Thank you for the opportunity to provide testimony.

DAVID Y. IGE  
GOVERNOR OF HAWAII



**STATE OF HAWAII  
DEPARTMENT OF LAND AND NATURAL RESOURCES**

POST OFFICE BOX 621  
HONOLULU, HAWAII 96809

**Testimony of  
SUZANNE D. CASE  
Chairperson**

**Before the Senate Committee on  
PUBLIC SAFETY, INTERGOVERNMENTAL, AND MILITARY AFFAIRS**

**Tuesday, February 7, 2017  
1:20 PM  
State Capitol, Conference Room 229**

**In consideration of  
SENATE BILL 108  
RELATING TO LAW ENFORCEMENT**

Senate Bill 108 proposes to: (1) require law enforcement agencies, including county police departments, to make personnel knowledgeable in the Law Enforcement Assisted Diversion (LEAD) approach; and (2) require law enforcement officers, including county police officers, to implement the LEAD approach. **The Department of Land and Natural Resources (Department) generally supports this measure so long as it does not replace our priorities requested in the Executive Budget.**

The Department's Division of Conservation and Resources Enforcement's Program supports providing officers with additional tools to ensure compliance in matters under its jurisdiction. However, this bill does not address training costs in implementing this Program.

Thank you for the opportunity to provide comments on this measure.

**SUZANNE D. CASE**  
CHAIRPERSON  
BOARD OF LAND AND NATURAL RESOURCES  
COMMISSION ON WATER RESOURCE MANAGEMENT

**KEKOA W. KALUHIWA**  
FIRST DEPUTY

**JEFFREY. T. PEARSON, P.E.**  
DEPUTY DIRECTOR - WATER

AQUATIC RESOURCES  
BOATING AND OCEAN RECREATION  
BUREAU OF CONVEYANCES  
COMMISSION ON WATER RESOURCE MANAGEMENT  
CONSERVATION AND COASTAL LANDS  
CONSERVATION AND RESOURCES ENFORCEMENT  
ENGINEERING  
FORESTRY AND WILDLIFE  
HISTORIC PRESERVATION  
KAHOOLAWE ISLAND RESERVE COMMISSION  
LAND  
STATE PARKS

DAVID Y. IGE  
GOVERNOR



STATE OF HAWAII  
**DEPARTMENT OF PUBLIC SAFETY**  
919 Ala Moana Boulevard, 4th Floor  
Honolulu, Hawaii 96814

**NOLAN P. ESPINDA**  
DIRECTOR

**Cathy Ross**  
Deputy Director  
Administration

**Jodie F. Maesaka-Hirata**  
Deputy Director  
Corrections

**Renee R. Sonobe Hong**  
Deputy Director  
Law Enforcement

No. \_\_\_\_\_

**TESTIMONY ON SENATE BILL 108  
RELATING TO LAW ENFORCEMENT**

by

**Nolan P. Espinda, Director**  
Department of Public Safety

Senate Committee on Public Safety, Intergovernmental, and Military Affairs  
Senator Clarence K. Nishihara, Chair  
Senator Glenn Wakai, Vice Chair

Tuesday, February 7, 2017; 1:20 p.m.  
State Capitol, Conference Room 229

Chair Nishihara, Vice Chair Wakai, and Members of the Committee:

The Department of Public Safety (PSD) **appreciates the intent** of Senate Bill (SB) 108 which mandates that all state and county law enforcement officers implement the Law Enforcement Assisted Diversion (LEAD) concept, and that all state and county law enforcement agencies train their personnel in the LEAD concept. PSD, however, expresses the following concerns.

First, the bill requires successful coordination between law enforcement and a diverse multitude of agencies, including state, county, and possibly contracted, private, and other community providers. Second, this bill requires law enforcement to be trained in and to implement the LEAD approach. This bill, however, makes no appropriation for law enforcement agencies to accomplish these two tasks.

Thank you for the opportunity to present this testimony.

# COMMUNITY ALLIANCE ON PRISONS

P.O. Box 37158, Honolulu, HI 96837-0158

Phone/E-Mail: (808) 927-1214 / [kat.caphi@gmail.com](mailto:kat.caphi@gmail.com)



## COMMITTEE ON PUBLIC SAFETY, INTERGOVERNMENTAL AND MILITARY AFFAIRS

Sen. Clarence Nishihara, Chair

Sen. Glenn Wakai, Vice Chair

Tuesday, February 7, 2017

1:20 pm

Room 229

### STRONG SUPPORT SB 108 - LAW ENFORCEMENT ASSISTED DIVERSION (LEAD)

Aloha Chair Nishihara, Vice Chair Wakai and Members of the Committee!

My name is Kat Brady and I am the Coordinator of Community Alliance on Prisons, a community initiative promoting smart justice policies in Hawai'i for two decades. This testimony is respectfully offered on behalf of the approximately 6,000 Hawai'i individuals living behind bars or under the "care and custody" of the Department of Public Safety on any given day. We are always mindful that approximately 1,400 of Hawai'i's imprisoned people are serving their sentences abroad thousands of miles away from their loved ones, their homes and, for the disproportionate number of incarcerated Native Hawaiians, far from their ancestral lands.

Community Alliance on Prisons is in strong support of SB 108 requiring law enforcement agencies, including county police departments, to make personnel knowledgeable in the Law Enforcement Assisted Diversion (LEAD) approach and requires law enforcement officers, including county police officers, to implement the LEAD approach.

Mahalo to the committee for hearing this bill. As the bill states, LEAD started in Seattle in 2011 and has expanded to many other jurisdictions because of its humane and compassionate approach in addressing social challenges faced by law enforcement every day.

LEAD is a community-based diversion program for people whose criminal activity is due to behavioral health issues. LEAD is a pre-booking or pre-arrest diversion program. In LEAD, low-level offenders for whom probable cause for arrest exists are diverted from arrest or booking by immediately referring them to harm-reduction, non-abstinence based, individualized case management.

LEAD was intended to demonstrate that non-coercive and non-punitive approaches to currently illegal activities such as drug use and other activities that individuals engage in to obtain funds to purchase drugs (e.g. car prowls, mail theft, prostitution, shoplifting) can be more effectively and humanely addressed outside of the criminal justice system.

In Hawai`i, Community Alliance on Prisons has been an active member of the growing LEAD Hawai`i Hui along with ACLU, CARE Hawai`i, CHOW Project, Drug Policy Forum of Hawai`i, Harm Reduction Hawai`i, Harm Reduction Services Branch of the Department of Health, Hawai`i Appleseed, Helping Hands Hawai`i, Hina Mauka, Institute for Human Services, Ku Aloha Ola Mau, Mental Health America Hawai`i, Partners in Care, PHOCUSED, Salvation Army ATS & FTS, Susannah Wesley Center, and We are Oceania.

The LEAD Hawai`i Hui has been working together since last summer to build the infrastructure in order to bring this successful program to Hawai`i to address some of our most pressing social challenges.

We cannot continue on this path of incarcerating people with substance misuse and mental health challenges. Incarcerating the houseless population has been an expensive failure and sets these people on a downward spiral with the criminal processing system that marks them for life. Incarcerating people has not been a winning strategy; it is expensive and it does little to address the challenges that have brought someone to jail. Our jail should not be our de facto mental health and houseless shelter – incarceration is the MOST EXPENSIVE and the LEAST EFFECTIVE option.

LEAD offers individualized case management services. The types of services accessed are entirely determined by individual participants and their case manager. As noted the only requirement for being in LEAD is to complete an intake assessment within a specified period of time. After that the individual is free to walk away without repercussion.

LEAD has taken a very practical approach to the everyday problems faced by some of the most vulnerable people in the community. What makes this program different is that they address the issues of the whole person. This could mean buying tires for someone who can't get to work, food for someone hungry and living on the street, or clothing for someone. It is a humane and compassionate way of helping members of the community and offering services to help meet their needs.

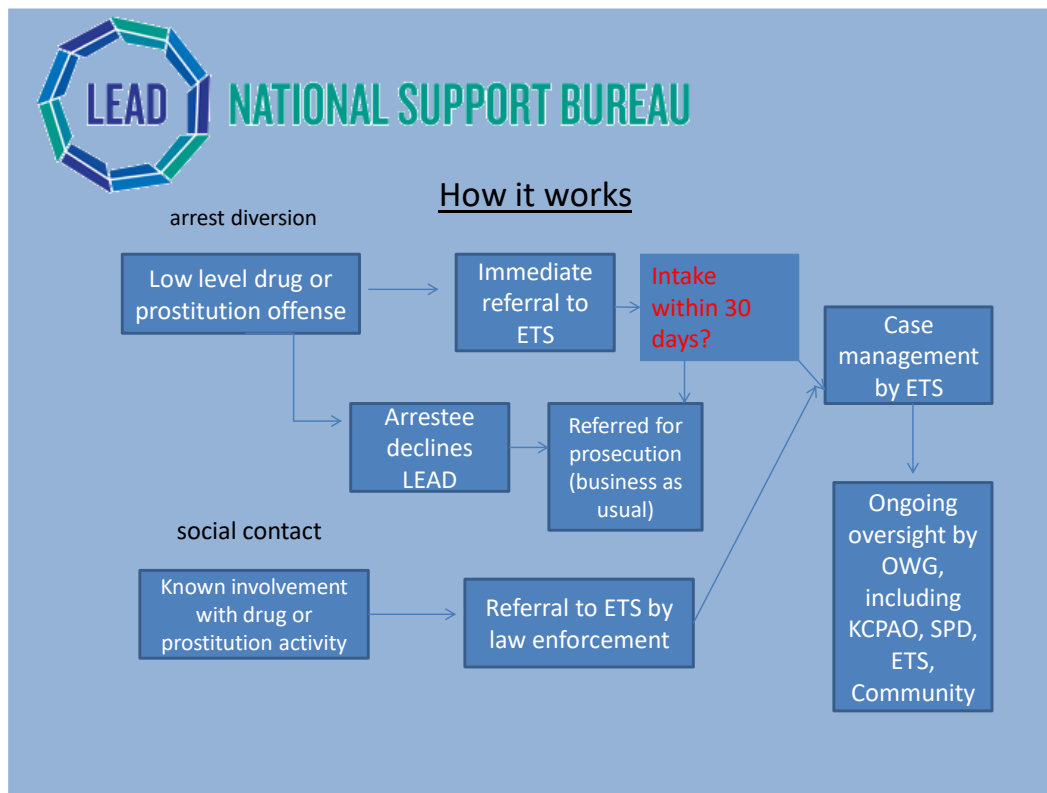
LEAD works because it is a non-threatening “warm hand-off” by the police to a service provider. Another reason for Seattle’s success is that after the assessment, they found that the “One stop, one drop” method of bringing people to the assessment center was enough for many people. Follow-through after the assessment is not mandatory, however, Seattle has found, through their evaluations, that

- People in LEAD were 60% less likely than people in the control group to be arrested after being in LEAD
- 82% were homeless prior to participation and 40% were housed
- 55% received drug treatment through LEAD
- Over 35 jurisdictions are exploring or already implementing LEAD

The National Director for LEAD, Kris Nyrop, was in Hawai`i in January. He spoke at the 2017 Harm Reduction Conference, had meetings with many Hawai`i officials, and met with the LEAD Hawai`i Hui. He was amazed at how our community came together to build the infrastructure before asking for funding. Several service providers have been attending the “Coffee with a Cop” sessions to talk to the police about LEAD. The response has been positive.

The police are the first responders to the issues that LEAD addresses head-on. They understand that simply arresting people is not a long-term strategy and that we need to face our challenges head-on.

Here is a picture of how LEAD works:



Some of the benefits that LEAD can bring

- will enforce the Aloha Spirit, which should be the guiding principle in all that we do
- will improve the relationships between the police and the community
- will encourage more people to accept help and services
- will divert people to services rather than jail

The importance of the LEAD Hawai'i Hui's planning, organizing, and identifying all the important elements to make a program work before launching it is a good example of how to start an innovative program. Bringing people together is crucial and something that our government needs to learn. Top-down ideas almost always face resistance when the community is locked out of the discussion.

Community Alliance on Prisons urges the committee to support the LEAD program by passing this important bill.

Mahalo for this opportunity to testify.



*Dedicated to safe, responsible, humane and effective drug policies since 1993*

TO: Senate Committee on Public Safety, Intergovernmental and Military Affairs  
FROM: Carl Bergquist, Executive Director  
HEARING DATE: 7 February 2017, 1:20 PM  
RE: SB108, Relating to the Law Enforcement, **IN SUPPORT**

Dear Chair Nishihara, Vice Chair Wakai, Members of the Committee:

The Drug Policy Forum of Hawai'i (DPFHI) strongly supports this measure to bring the harm reduction philosophy of Law Enforcement Assisted Diversion (LEAD) to Hawaii's law enforcement agencies, in particular to county police departments. We are members of a 20-organization strong [grass-roots hui, led by the CHOW Project](#), that has been working for many months to bring LEAD to Hawai'i, and as such we welcome the support that this bill provides.

LEAD has been proven to work elsewhere in preventing at-risk individuals from being arrested and instead be diverted to various services including housing, mental health or substance abuse counseling. This approach not only better serves the needs of the impacted individual, but it lessens the burdens and strains placed on our criminal justice system while also fostering greater trust between law enforcement and the communities they are sworn to serve and protect.

It is very exciting to see so many related measures being considered by the legislature this session, which when taken together truly would change the costly and punitive nature of Hawaii's approach to criminal justice. Beginning with front-end solutions like LEAD and back-end ones like the Community Court as proposed in SB718 and HB457, we also advocate changing some of our laws to decriminalize certain offenses, e.g. possession of cannabis (SB16, HB107, HB1463) and drug paraphernalia (SB1248 and HB1501). In recognizing the need for a community court and for LEAD, we also recognize that our laws are criminalizing people who deserve better. Updating our laws to reflect this is common sense.

Mahalo for the opportunity to testify.



**From:** mailinglist@capitol.hawaii.gov  
**Sent:** Monday, February 6, 2017 8:14 AM  
**To:** PSMTestimony  
**Cc:** catgraham48@gmail.com  
**Subject:** Submitted testimony for SB108 on Feb 7, 2017 13:20PM

**SB108**

Submitted on: 2/6/2017

Testimony for PSM on Feb 7, 2017 13:20PM in Conference Room 229

<b>Submitted By</b>	<b>Organization</b>	<b>Testifier Position</b>	<b>Present at Hearing</b>
Catherine Susan Graham	FACE	Support	No

Comments: We need the LEAD program in Hawaii. We want to empty our prisons, make good citizens of those who are not currently, and create good neighbors. This program is a huge step in that direction.

Please note that testimony submitted less than 24 hours prior to the hearing, improperly identified, or directed to the incorrect office, may not be posted online or distributed to the committee prior to the convening of the public hearing.

Do not reply to this email. This inbox is not monitored. For assistance please email [webmaster@capitol.hawaii.gov](mailto:webmaster@capitol.hawaii.gov)

ON BEHALF OF HARM REDUCTION HAWAII  
TESTIMONY

c/o 1658 Liholiho St #205  
Honolulu, HI 96822

February 5 2017

RE: SB 108 to be heard Tuesday February 7, in Room 229 at 1:20 PM

To the members of the Senate Committee on Public Safety

Harm Reduction Hawaii is in **strong support of LEAD**. We urge the state to move forward with this program with as few delays as possible. We hope that this can become the centerpiece of a broad review of our approach to criminal justice and the overuse of the courts, and the prisons, to solve social problems.

Harm Reduction Hawaii is a non-profit organization that works with a large number of local service agencies to improve social services through harm reduction training and education. A list of some of the partners in the recent conference held at the Ala Moana Hotel is noted at the end of this testimony.

Signed:



Tracy Ryan

**Conference Partners Included:** ACLU • AIDS Education Project • CHOW Project • Community Alliance on Prisons • Drug Policy Forum of HI • Gregory House Programs • Harm Reduction HI • HI Department of Health-Chronic Disease Prevention, Harm Reduction Services, Health Promotion, and Injury Prevention Branches • HI Coalition for Immigrant Rights • HI Island HIV/AIDS Foundation • HPU School of Social Work • HI Youth Services Network • Hep Free HI • HEP Project-Seattle • Hina Mauka • Life Foundation • Malama Pono Health Services • Maui AIDS Foundation • Mental Health America of HI • Orasure • Pacific Gateway Clinic • Papa Ola Lokahi • Tattoo Hawaii • UH Office of Public Health Studies, College of Pharmacy and School of Social Work • Waikiki Health • We Are Oceania •



COMMITTEE ON PUBLIC SAFETY, INTERGOVERNMENTAL, AND MILITARY AFFAIRS

Senator Clarence K. Nishihara, Chair

Senator Glenn Wakai, Vice Chair

DATE: Tuesday, February 7, 2017

TIME: 1:20 PM

PLACE: Conference Room 229

Dear Honorable Committee Members,

Strong support for SB108 – Relating to Law Enforcement

We strongly support this measure to create a LEAD program in Hawai'i for law enforcement officers to apply a harm reduction, instead of punitive, approach for the numerous offenses committed by people that are largely due to social and economic problems. A vast number of people arrested and incarcerated suffer from these problems, which this bill would address.

This bill is a step toward criminal justice reform that has been called for by many who work in, are recipients of, and who study and research the outcomes of the criminal justice system.

LEAD can also help strengthen relations between the police and the community:

*An unplanned, but welcome, effect of LEAD has been the reconciliation and healing it has brought to police-community relations. While tensions rise between law enforcement and community members and civil rights advocates, LEAD has led to strong alliances among traditional opponents in policy debates surrounding policing, and built a strong positive relationship between police officers and people on the street who are often a focus of police attention (LEAD, 2017, [http://media.wix.com/ugd/6f124f\\_75841bd06a4f4469bba5e61d2766e2a6.pdf](http://media.wix.com/ugd/6f124f_75841bd06a4f4469bba5e61d2766e2a6.pdf)).*

Programs like LEAD should be wholeheartedly supported, and given significant funding, instead of new prison and jail bed construction, which is a step backward.

I am executive director of Hawai'i Friends of Restorative Justice a 30+ year old non-profit dedicated to improving our justice system. We design, implement and measure pilot projects using applied learning in an effort to generate evidence-based knowledge of what works to increase civic behavior, help people desist from crime, and assist those harmed by crime and social injustice. We have worked with imprisoned people since 2004. Many articles about our work assisting formerly imprisoned people reenter the community, have been published and disseminated. Others, nationally and internationally, frequently contact us for assistance with reentry programs and policies.

Mahalo for your public service. Please contact me at (808) 218-3712 and [lorenn@hawaiiifriends.org](mailto:lorenn@hawaiiifriends.org) for any questions or comments about our work and our strong opposition to this bill.

Aloha,

Loren Walker, JD, MPH

**2017 Board of Directors:**

Rich Turbin, Esq., President • Roger Epstein, Esq., Vice President • Madonna Castro Perez, Secretary,  
Lisa Jensen, Treasurer, • Cheri Tarutani, MSW, • Kellen Kashiwa, OD, • Ian Crabbe  
Elizabeth Naholowa`a Murph



**SB 108 Law Enforcement (LEAD):** Requires law enforcement agencies, including county police departments, to make personnel knowledgeable in the Law Enforcement Assisted Diversion (LEAD) approach. Requires law enforcement officers, including county police officers, to implement the LEAD approach.

SENATE COMMITTEE ON PUBLIC SAFETY, INTERGOVERNMENTAL, AND MILITARY AFFAIRS:

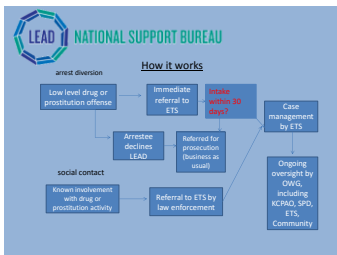
- Senator Clarence Nishihara, Chair; Senator Glenn Wakai, Vice Chair
- Tuesday, Feb. 7th, 2017: 1:20 p.m.
- Conference Room 229

### HAWAII SUBSTANCE ABUSE COALITION (HSAC) Supports

**SB108:** ALOHA CHAIR NISHIHARA, VICE CHAIR WAKAI AND DISTINGUISHED COMMITTEE MEMBERS. My name is Alan Johnson. I am the current chair of the Hawaii Substance Abuse Coalition (HSAC), a statewide hui of over 30 non-profit alcohol and drug treatment and prevention agencies.

The Hawai'i Substance Abuse Coalition supports the implementation of a pilot program on Oahu using the Law Enforcement Assisted Diversion (LEAD) program model that has shown promising success in diverting individuals engaged in low level substance abuse related criminal behavior to community treatment and case management services.

- *LEAD's goal is to improve public safety and public order, and to reduce the criminal behavior of people who participate in the program.* Other goals are to "reduce" number of people involved in low level offenses related to drug use, mental health, sex work and poverty; "undo" racial disparities in the criminal justice system; "sustain" funding for alternate interventions by reinvesting justice system savings; and "strengthen" relationships between law enforcement and community.



LEAD works by giving low-level drug offenders a choice: they can go the standard route of arrest-prosecution-incarceration, or be sent to a case-management program, which offers support services including transitional housing, counseling, job training and drug treatment.

LEAD, a community-based pre-arrest diversion program, is intended to be a more humane response to stopping illegal criminal activity (such as prostitution and theft) among low-level offenders with behavioral health problems. Current programs across the nation indicate that the majority of low level criminal activity is done by people struggling with addiction problems.

We appreciate the opportunity to provide testimony and are available for questions.

**From:** mailinglist@capitol.hawaii.gov  
**Sent:** Monday, February 6, 2017 8:39 AM  
**To:** PSMTestimony  
**Cc:** blawaiianlvr@icloud.com  
**Subject:** Submitted testimony for SB108 on Feb 7, 2017 13:20PM

**SB108**

Submitted on: 2/6/2017

Testimony for PSM on Feb 7, 2017 13:20PM in Conference Room 229

<b>Submitted By</b>	<b>Organization</b>	<b>Testifier Position</b>	<b>Present at Hearing</b>
De MONT R. D. CONNER	Ho'omana Pono, LLC.	Support	Yes

Comments: We STRONGLY SUPPORT this bill.

Please note that testimony submitted less than 24 hours prior to the hearing, improperly identified, or directed to the incorrect office, may not be posted online or distributed to the committee prior to the convening of the public hearing.

Do not reply to this email. This inbox is not monitored. For assistance please email [webmaster@capitol.hawaii.gov](mailto:webmaster@capitol.hawaii.gov)

**From:** mailinglist@capitol.hawaii.gov  
**Sent:** Monday, February 6, 2017 8:53 AM  
**To:** PSMTestimony  
**Cc:** connieM@ihs-hawaii.org  
**Subject:** Submitted testimony for SB108 on Feb 7, 2017 13:20PM

**SB108**

Submitted on: 2/6/2017

Testimony for PSM on Feb 7, 2017 13:20PM in Conference Room 229

<b>Submitted By</b>	<b>Organization</b>	<b>Testifier Position</b>	<b>Present at Hearing</b>
Connie Mitchell	IHS, The Institute for Human Services, Inc.	Support	Yes

Comments: IHS strongly supports this bill to initiate law enforcement assisted diversion. This would provide an important and powerful option for getting more homeless substance abusers off the street and accessing treatment. With the passage of this bill, we hope policy makers will also fund more substance abuse services: detox, residential and outpatient treatment.

Please note that testimony submitted less than 24 hours prior to the hearing, improperly identified, or directed to the incorrect office, may not be posted online or distributed to the committee prior to the convening of the public hearing.

Do not reply to this email. This inbox is not monitored. For assistance please email [webmaster@capitol.hawaii.gov](mailto:webmaster@capitol.hawaii.gov)



DOING THE MOST GOOD

Founded in 1865

William Booth  
Founder

Andre Cox  
General

Kenneth Hodder  
Territorial Commander

John Chamness  
Lani Chamness  
Divisional Leaders

Melanie Boehm  
Executive Director

# The Salvation Army

Addiction Treatment Services and Family Treatment Services

2-6-17

## SB 108 RELATING TO LAW ENFORCEMENT

Requires law enforcement agencies, including county police departments, to make personnel knowledgeable in the Law Enforcement Assisted Diversion (LEAD) approach. Requires law enforcement officers, including county police officers, to implement the LEAD approach.

### SENATE COMMITTEE ON PUBLIC SAFETY, INTERGOVERNMENTAL AND MILITARY AFFAIRS:

- Senator Clarence Nishihara, Chair; Senator Glenn Wakai, Vice Chair
- Tuesday, Feb. 7th, 2017: 1:20 p.m.
- Conference Room 229

### The Salvation Army Addiction Treatment Services (ATS) and Family Treatment Services (FTS) SUPPORTS SB108 (LEAD Approach for law enforcement officers)

- The LEAD approach is effective in responding to low-level offenses when collaboration occurs among police, prosecutors, public defenders, government agencies and leaders, and social service agencies (i.e. housing, mental health, medical, substance abuse treatment providers, etc.)
- Other states have implemented the LEAD approach in their communities with a tailored focus on the needs of those specific communities with much success. Seattle, Washington implemented a LEAD approach and since 2011, 58% of participants were less likely to be arrested after being in LEAD, compared to the control group. 82% were homeless prior to participation and 40% were housed. 56% received substance use disorder treatment through LEAD efforts. Thirty-five other jurisdictions are exploring or have already implemented LEAD efforts.
- The LEAD Hawaii Hui a group of more than 20 social service agencies, coalitions, and state departments are in support of a LEAD approach and regular planning meetings are held. LEAD Hawaii Hui has been in close contact with the LEAD National Support Director.
- A concerted effort for training will need to occur with law enforcement officers regarding the implementation of a **harm reduction and trauma informed care** approach. Efforts for training need also to include coordination of key service providers and the referral process.
- Trauma informed care (TIC) training efforts through SAMHSA technical assistance provided in collaboration with the National Association of State Mental Health Program Directors (NASMHPD) is targeted for Hawaii in the summer of 2017. Law enforcement and public safety staff will be the target audience.

Participating Agency



Aloha United Way

Addiction Treatment Services

3624 Waokanaka Street ♦ Honolulu, Hawai'i 96817 ♦Tel: (808) 595-6371 ♦Fax: (808) 595-8250

Family Treatment Services

845 22<sup>nd</sup> Avenue ♦ Honolulu, Hawai'i 96816 ♦Tel: (808) 732-2802 ♦Fax: (808) 734-7470

Visit us at: [www.SalvationArmyHawaii.org](http://www.SalvationArmyHawaii.org)



DOING THE  
MOST GOOD

Founded in 1865

William Booth  
*Founder*

Andre Cox  
*General*

Kenneth Hodder  
*Territorial Commander*

John Chamness  
Lani Chamness  
*Divisional Leaders*

Melanie Boehm  
*Executive Director*

## *The Salvation Army*

*Addiction Treatment Services and Family Treatment Services*

- The LEAD effort can be coordinated also with the Community Outreach Court efforts where help and services are available to those offenders who are homeless, non-violent, mentally ill and /or have a substance use disorder. This requires community efforts to work together (law enforcement, courts, treatment providers, etc.) to appropriately and effectively address these issues through diversion or other efforts so as not to unnecessarily clog up the jails and court system
- Early treatment connections and connections with appropriate basic resources and services is also a cost-effective approach and one which may return a non-violent non-felony offense into an opportunity for someone to become a productive contributing member of our community.

The Salvation Army ATS-FTS supports the development and implementation of a LEAD approach in Hawaii's law enforcement agencies as an effective means to using collaboration with community based social services to effectively address the issues of the people in our communities.

Thank you for the opportunity to provide written testimony on this important bill.

Sincerely,

Melanie T. Boehm MA, LMHC, CSAC  
Executive Director ATS-FTS

Participating Agency



Addiction Treatment Services

3624 Waokanaka Street ♦ Honolulu, Hawai'i 96817 ♦Tel: (808) 595-6371 ♦Fax: (808) 595-8250

Family Treatment Services

845 22<sup>nd</sup> Avenue ♦ Honolulu, Hawai'i 96816 ♦Tel: (808) 732-2802 ♦Fax: (808) 734-7470

Visit us at: [www.SalvationArmyHawaii.org](http://www.SalvationArmyHawaii.org)



**From:** mailinglist@capitol.hawaii.gov  
**Sent:** Saturday, February 4, 2017 5:04 PM  
**To:** PSMTestimony  
**Cc:** aurasaki@hawaiiantel.net  
**Subject:** Submitted testimony for SB108 on Feb 7, 2017 13:20PM

**SB108**

Submitted on: 2/4/2017

Testimony for PSM on Feb 7, 2017 13:20PM in Conference Room 229

<b>Submitted By</b>	<b>Organization</b>	<b>Testifier Position</b>	<b>Present at Hearing</b>
Alan Urasaki	Individual	Support	No

Comments: In support of this measure. Mahalo.

Please note that testimony submitted less than 24 hours prior to the hearing, improperly identified, or directed to the incorrect office, may not be posted online or distributed to the committee prior to the convening of the public hearing.

Do not reply to this email. This inbox is not monitored. For assistance please email [webmaster@capitol.hawaii.gov](mailto:webmaster@capitol.hawaii.gov)

**From:** mailinglist@capitol.hawaii.gov  
**Sent:** Sunday, February 5, 2017 5:11 PM  
**To:** PSMTestimony  
**Cc:** pastordianem@gmail.com  
**Subject:** Submitted testimony for SB108 on Feb 7, 2017 13:20PM

**SB108**

Submitted on: 2/5/2017

Testimony for PSM on Feb 7, 2017 13:20PM in Conference Room 229

<b>Submitted By</b>	<b>Organization</b>	<b>Testifier Position</b>	<b>Present at Hearing</b>
Diane S. Martinson	Individual	Comments Only	No

Comments: I support LEAD training and implementation within law enforcement agencies.

Please note that testimony submitted less than 24 hours prior to the hearing, improperly identified, or directed to the incorrect office, may not be posted online or distributed to the committee prior to the convening of the public hearing.

Do not reply to this email. This inbox is not monitored. For assistance please email [webmaster@capitol.hawaii.gov](mailto:webmaster@capitol.hawaii.gov)

**From:** mailinglist@capitol.hawaii.gov  
**Sent:** Monday, February 6, 2017 8:58 AM  
**To:** PSMTestimony  
**Cc:** Bmcd63@gmail.com  
**Subject:** \*Submitted testimony for SB108 on Feb 7, 2017 13:20PM\*

**SB108**

Submitted on: 2/6/2017

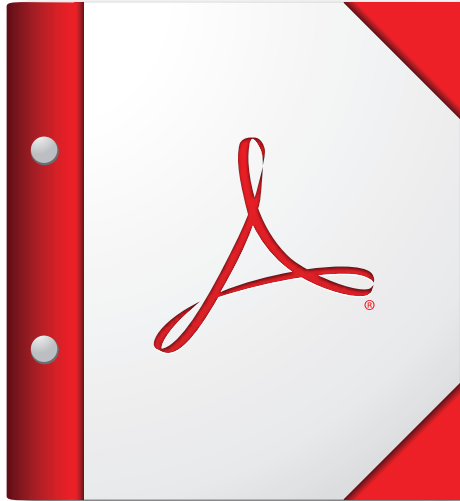
Testimony for PSM on Feb 7, 2017 13:20PM in Conference Room 229

<b>Submitted By</b>	<b>Organization</b>	<b>Testifier Position</b>	<b>Present at Hearing</b>
Elizabeth McDermott	Individual	Support	No

Comments:

Please note that testimony submitted less than 24 hours prior to the hearing, improperly identified, or directed to the incorrect office, may not be posted online or distributed to the committee prior to the convening of the public hearing.

Do not reply to this email. This inbox is not monitored. For assistance please email [webmaster@capitol.hawaii.gov](mailto:webmaster@capitol.hawaii.gov)



**For the best experience, open this PDF portfolio in  
Acrobat X or Adobe Reader X, or later.**

[Get Adobe Reader Now!](#)

**From:** mailinglist@capitol.hawaii.gov  
**Sent:** Monday, February 6, 2017 9:22 AM  
**To:** PSMTestimony  
**Cc:** mkhan@hawaiiantel.net  
**Subject:** Submitted testimony for SB108 on Feb 7, 2017 13:20PM

**SB108**

Submitted on: 2/6/2017

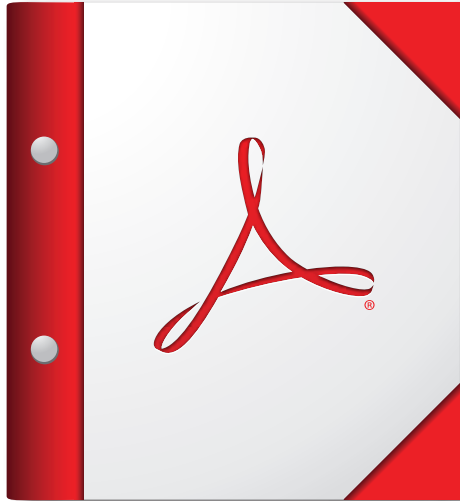
Testimony for PSM on Feb 7, 2017 13:20PM in Conference Room 229

<b>Submitted By</b>	<b>Organization</b>	<b>Testifier Position</b>	<b>Present at Hearing</b>
Leimomi Khan	Individual	Support	No

Comments: Please pass SB 108 that would require law enforcement agencies, including county police departments, to make personnel knowledgeable in the Law Enforcement Assisted Diversion (LEAD) approach and requires law enforcement officers, including county police officers, to implement the LEAD approach. LEAD offers the opportunity to utilize a process outside of the criminal justice system to more effectively and humanely address illegal activities such as drug use and other activities that individuals engage in to obtain funds to purchase drugs (e.g. car prowls, mail theft, prostitution, shoplifting) and possibly may be more cost effective than the current system for addressing such illegal activities.

Please note that testimony submitted less than 24 hours prior to the hearing, improperly identified, or directed to the incorrect office, may not be posted online or distributed to the committee prior to the convening of the public hearing.

Do not reply to this email. This inbox is not monitored. For assistance please email [webmaster@capitol.hawaii.gov](mailto:webmaster@capitol.hawaii.gov)



**For the best experience, open this PDF portfolio in  
Acrobat X or Adobe Reader X, or later.**

[Get Adobe Reader Now!](#)

**From:** mailinglist@capitol.hawaii.gov  
**Sent:** Monday, February 6, 2017 12:18 PM  
**To:** PSMTestimony  
**Cc:** shannonkona@gmail.com  
**Subject:** Submitted testimony for SB108 on Feb 7, 2017 13:20PM

**SB108**

Submitted on: 2/6/2017

Testimony for PSM on Feb 7, 2017 13:20PM in Conference Room 229

<b>Submitted By</b>	<b>Organization</b>	<b>Testifier Position</b>	<b>Present at Hearing</b>
Shannon Rudolph	Individual	Support	No

Comments: STRONGLY SUPPORT!

Please note that testimony submitted less than 24 hours prior to the hearing, improperly identified, or directed to the incorrect office, may not be posted online or distributed to the committee prior to the convening of the public hearing.

Do not reply to this email. This inbox is not monitored. For assistance please email [webmaster@capitol.hawaii.gov](mailto:webmaster@capitol.hawaii.gov)

**From:** mailinglist@capitol.hawaii.gov  
**Sent:** Sunday, February 5, 2017 9:04 PM  
**To:** PSMTestimony  
**Cc:** taian.miao@gmail.com  
**Subject:** Submitted testimony for SB108 on Feb 7, 2017 13:20PM

**SB108**

Submitted on: 2/5/2017

Testimony for PSM on Feb 7, 2017 13:20PM in Conference Room 229

<b>Submitted By</b>	<b>Organization</b>	<b>Testifier Position</b>	<b>Present at Hearing</b>
Tai-An	Individual	Support	No

Comments: I support SB108 because pre-arrest diversion is a fiscally responsible and compassionate intervention that is showing promising results in jurisdictions where it has been implemented. It is an appropriate response in line with national justice policy for people who are involved with non-serious, non-violent offenses who would more effectively served by social services than court-based responses.

Please note that testimony submitted less than 24 hours prior to the hearing, improperly identified, or directed to the incorrect office, may not be posted online or distributed to the committee prior to the convening of the public hearing.

Do not reply to this email. This inbox is not monitored. For assistance please email [webmaster@capitol.hawaii.gov](mailto:webmaster@capitol.hawaii.gov)



**From:** mailinglist@capitol.hawaii.gov  
**Sent:** Sunday, February 5, 2017 12:09 PM  
**To:** PSMTestimony  
**Cc:** lady.flach@gmail.com  
**Subject:** \*Submitted testimony for SB108 on Feb 7, 2017 13:20PM\*

**SB108**

Submitted on: 2/5/2017

Testimony for PSM on Feb 7, 2017 13:20PM in Conference Room 229

<b>Submitted By</b>	<b>Organization</b>	<b>Testifier Position</b>	<b>Present at Hearing</b>
Teri Heede	Individual	Support	No

Comments:

Please note that testimony submitted less than 24 hours prior to the hearing, improperly identified, or directed to the incorrect office, may not be posted online or distributed to the committee prior to the convening of the public hearing.

Do not reply to this email. This inbox is not monitored. For assistance please email [webmaster@capitol.hawaii.gov](mailto:webmaster@capitol.hawaii.gov)