

ISCs

The Invasive Species Committees of Hawai'i

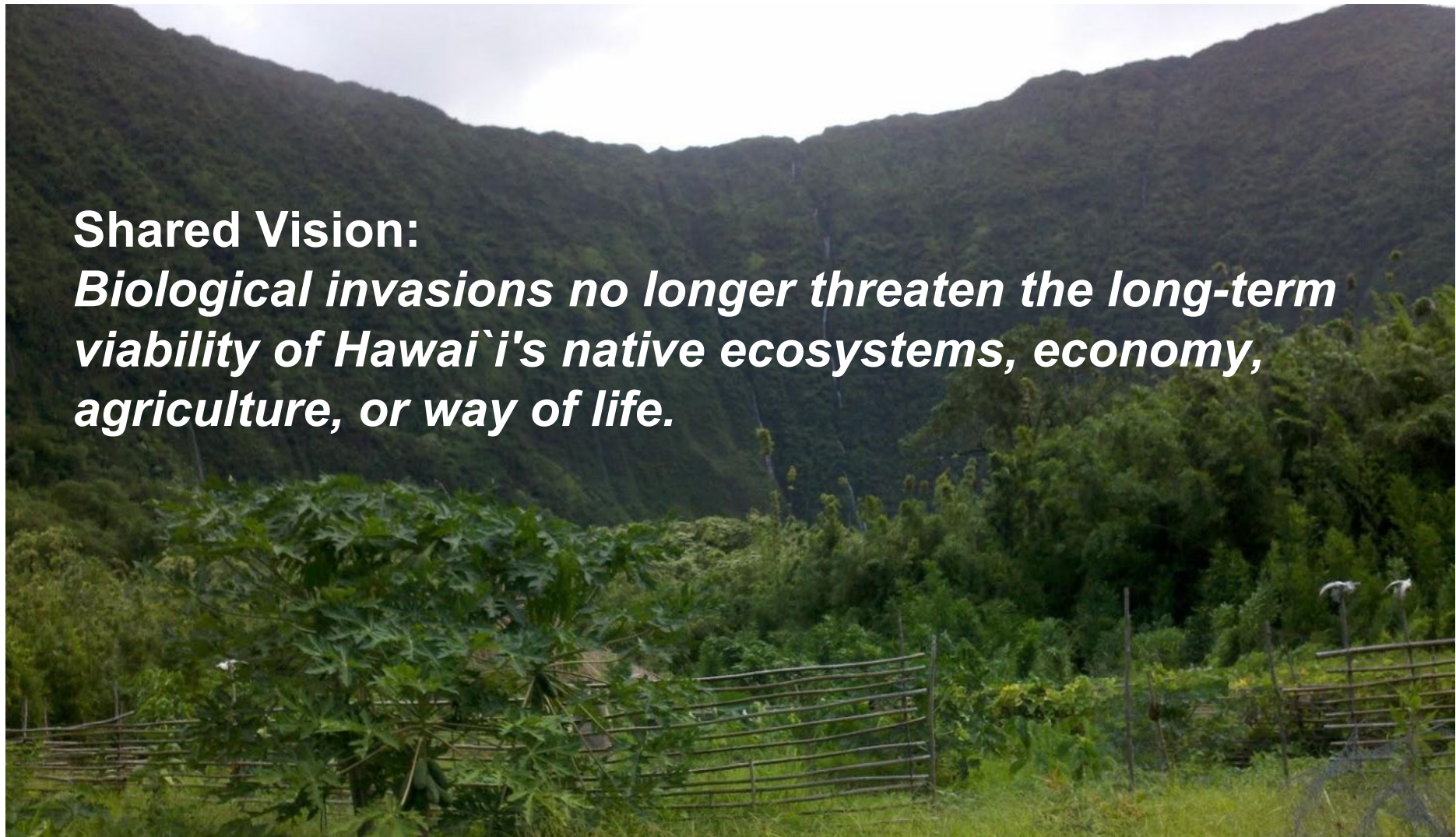


ISCS

The Invasive Species Committees of Hawai'i

Shared Vision:

Biological invasions no longer threaten the long-term viability of Hawai'i's native ecosystems, economy, agriculture, or way of life.



University of Hawai'i at Mānoa

Office of Research Services
(ORS)

Provides grants management for extramural funded activities.

UH Mānoa Department of Botany Pacific
Cooperative Studies Unit (PCSU)

Addresses environmental challenges that threaten the sustainability of our island ecosystems. Provides guidance, administrative expertise and logistical support for projects.

Research Corporation
of the University of
Hawai'i (RCUH)

Provides financial and human resources services.

In FY16 RCUH had:
6,565 Projects
2,835 Employees
Spent \$291,370,122



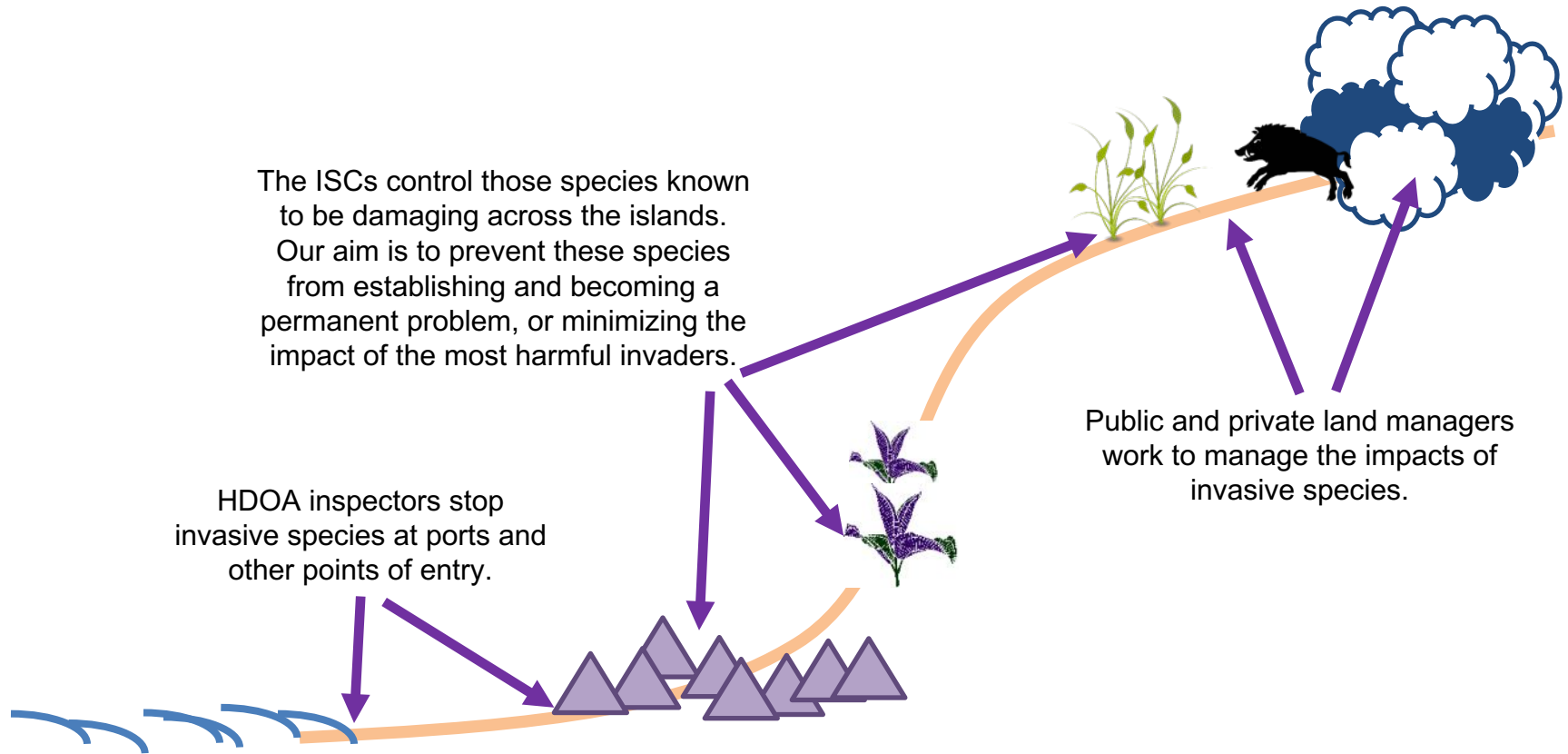


A few of our Partners and Funders

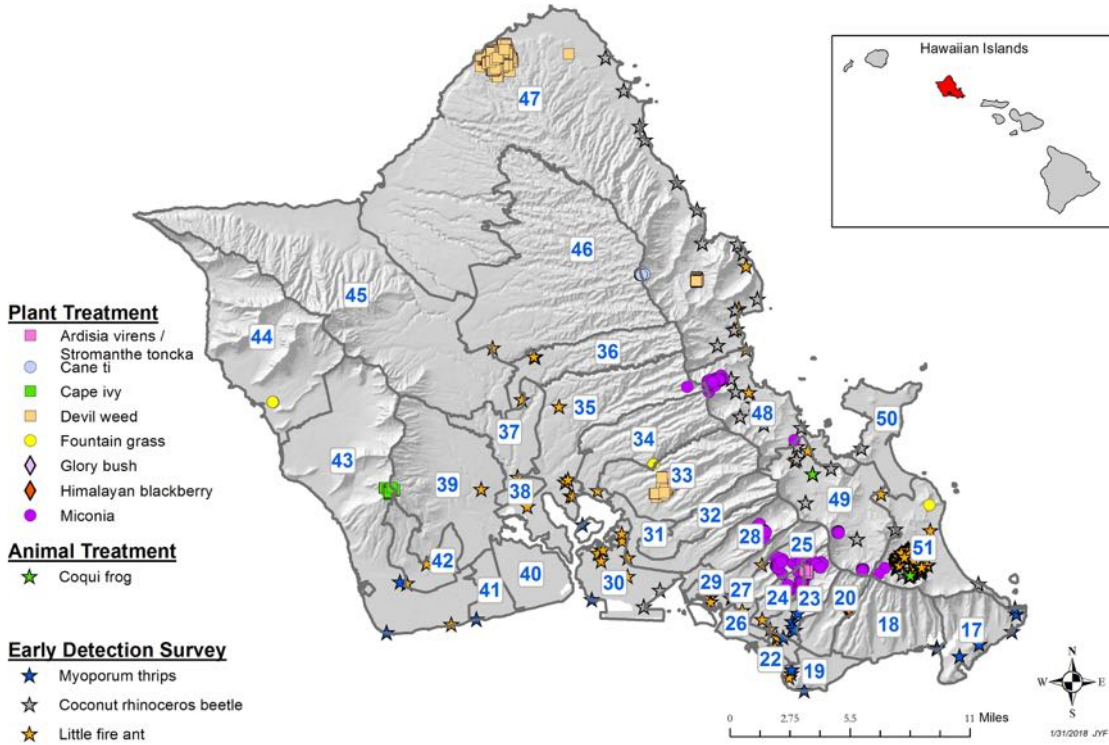


Invasive Species Committees and Partners

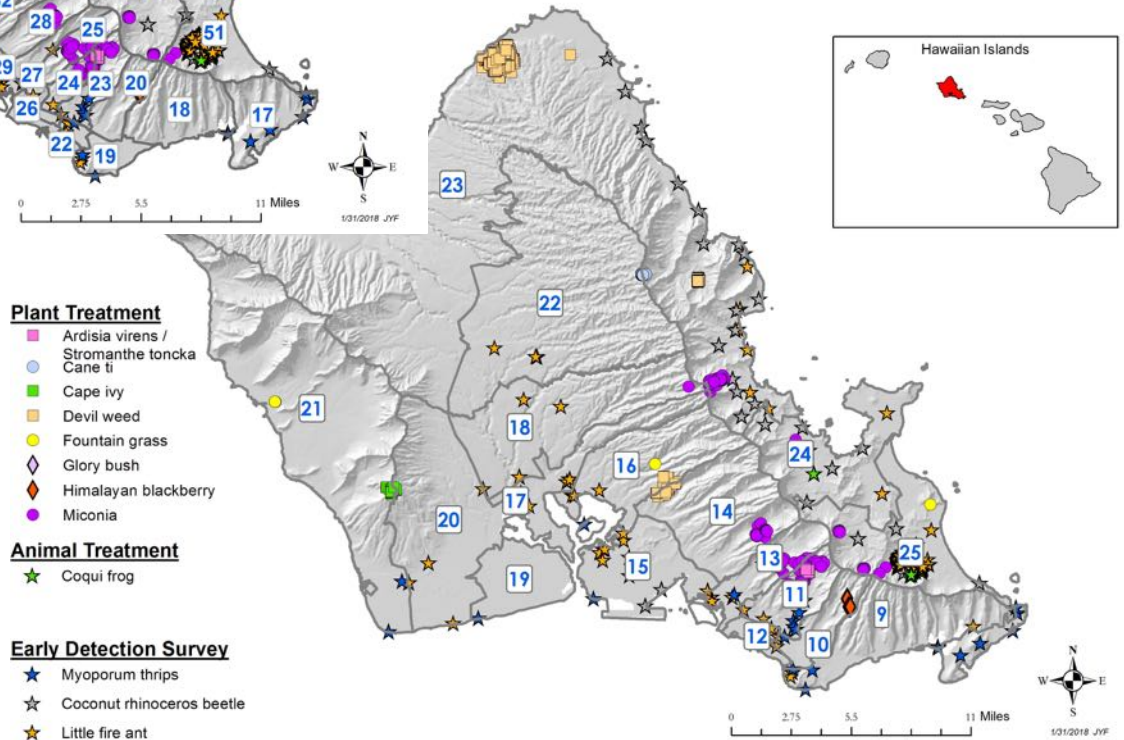
Taking on the most harmful invasive species – a cooperative approach



**O'ahu Invasive Species Committee Target Species Actions
(including work with partner agencies)
and State House Districts
Jan 1, 2017 - Dec 31, 2017**



**Invasive Species Committee Target Species Actions
(including work with partner agencies)
and State Senate Districts
Jan 1, 2017 - Dec 31, 2017**





Mahalo!

