

DAVID Y. IGE
GOVERNOR OF
HAWAII



**STATE OF HAWAII
DEPARTMENT OF LAND AND NATURAL RESOURCES**

POST OFFICE BOX 621
HONOLULU, HAWAII 96809

**Testimony of
SUZANNE D. CASE
Chairperson**

**Before the House Committee on
FINANCE**

**Friday, February 23, 2018
12:00 PM
State Capitol, Conference Room 308**

**In consideration of
HOUSE BILL 2595, HOUSE DRAFT 1
RELATING TO WATERSHEDS**

House Bill 2595, House Draft 1 proposes to appropriate moneys to the Department of Land and Natural Resources (Department) for improvements, repairs, and maintenance of watersheds throughout the State. **The Department supports this measure, provided that its passage does not replace or adversely impact priorities indicated in the Executive Supplemental Budget request.**

The Department's supplemental budget request for Fiscal Year 19 (House Bill 1900/Senate Bill 2065) includes requests for the work identified in this bill as well as other priority watershed projects across the State. Funding for watershed protection and management projects is appreciated, and necessary for sustaining the islands' fresh water supplies.

Projects identified in this bill are detailed below:

Pāku'i (Moloka'i)

- The objective of this project is to protect and preserve high quality native watershed forest in an effort to safeguard the Molokai drinking water supply.
- This forested watershed is the primary source of fresh water for the 'Ualapu'e aquifer, which supplies water to East Moloka'i residents.

SUZANNE D. CASE
CHAIRPERSON
BOARD OF LAND AND NATURAL RESOURCES
COMMISSION ON WATER RESOURCE MANAGEMENT

ROBERT K. MASUDA
FIRST DEPUTY

JEFFREY T. PEARSON, P.E.
DEPUTY DIRECTOR - WATER

AQUATIC RESOURCES
BOATING AND OCEAN RECREATION
BUREAU OF CONVEYANCES
COMMISSION ON WATER RESOURCE MANAGEMENT
CONSERVATION AND COASTAL LANDS
CONSERVATION AND RESOURCES ENFORCEMENT
ENGINEERING
FORESTRY AND WILDLIFE
HISTORIC PRESERVATION
KAHOOLAWE ISLAND RESERVE COMMISSION
LAND
STATE PARKS

Central Opae‘ula (O‘ahu)

- The objective of this project is to protect and preserve high quality native watershed forest on Oahu’s north shore.
- Plans call for protection of a 1,230 acre unit.

Waiawa (O‘ahu)

- The proposed project is a joint collaboration between the State Division of Forestry and Wildlife, and the Ko'olau Mountains Watershed Partnership to protect 1,400 acres of intact native forest. This project will preserve the watershed's function as an important area for ground water recharge, supplying drinking water to Oahu’s urban core.

Keauhou, Ka‘ū (Hawai‘i)

- Part of a landscape-scale watershed protection and koa reforestation project in Ka‘ū.

The Watershed Partnership Program was established to help land owners manage lands critical for recharging Hawaii’s supply of fresh water and protecting our native biodiversity. Additional funding to support the work of the watershed partnerships is core to the State’s mandate to protect public trust water resources. The Kaua‘i Watershed Alliance, and East Moloka‘i Watershed Partnership, are part of a network of ten watershed partnerships in the State. These groups are voluntary alliances of public and private landowners committed to the common value of protecting Hawaii’s forested watersheds. The Department strongly supports funding directed at management activities in watershed partnerships. Ongoing support is critical to preserving native forest and watershed areas.

Thank you for the opportunity to comment on this measure.

Testimony of The Nature Conservancy of Hawai'i
Supporting HB 2595 HD1 Relating to Watersheds
House Committee on Finance
Friday, February 23, 2018, 12:00PM, Room 308

The Nature Conservancy of Hawai'i is a private non-profit conservation organization dedicated to the preservation of the lands and waters upon which life depends. The Conservancy has helped to protect nearly 200,000 acres of natural lands in Hawai'i. We manage more 40,000 acres in 14 preserves and work in 19 coastal communities to help protect the near-shore reefs and waters of the main Hawaiian Islands. We forge partnerships with government, private parties and communities to protect Hawai'i's important watershed forests and coral reefs.

The Nature Conservancy supports HB 2595 HD1 appropriating funding to the Department of Land and Natural Resources (DLNR) for watershed management at several locations across the state, including the construction of protective fences and management of invasive animals and plants. **We support the full operational and capital requests in the DLNR's proposed FY19 supplemental budget for the forest and watershed programs within the Division of Forests and Wildlife (DOFAW).** (*map of CIP projects attached*)

We call the Committees' attention and offer support for the proposed protective fence project on the island of Moloka'i that is in the DLNR-DOFAW budget request and mentioned in HB 2595:

- Pāku'i fence on Moloka'i through upper Pua'ahala, Ka'amola, Keawa Nui, West 'Ōhi'a, East 'Ōhi'a, Manawai, Kahananui, 'Ualapu'e, and Kalua'aha. This forest area is the primary source of fresh water for the 'Ualapu'e aquifer, which supplies water to East Moloka'i residents. (*additional information attached*)

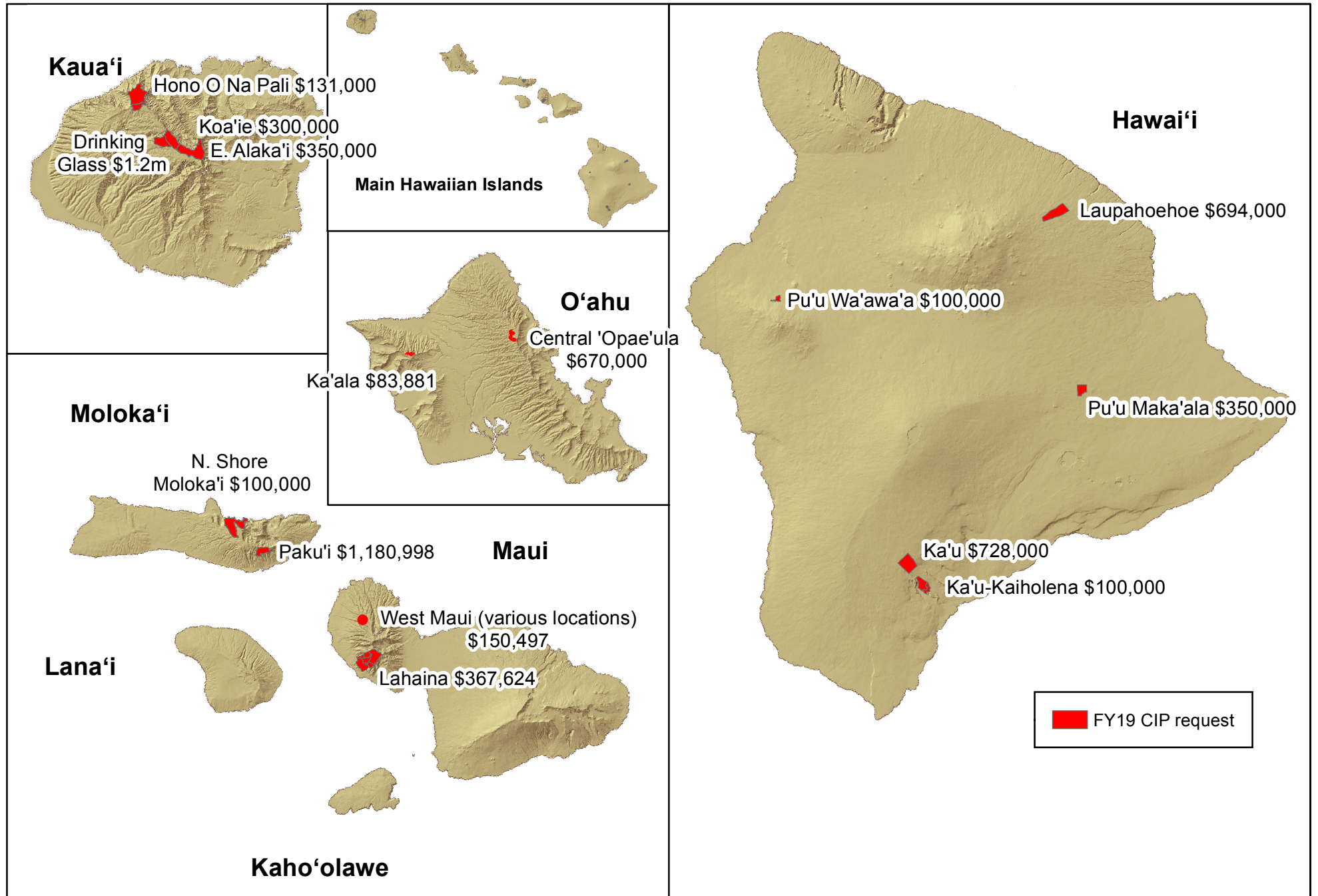
In addition, we call the Committees' attention and offer support for the proposed protective fence projects on the island of Kaua'i that are in the DLNR-DOFAW budget request, but not mentioned in HB 2595:

- Koai'e, Drinking Glass and East Alaka'i fences on Kaua'i: These areas are located within the Alaka'i Wilderness Preserve in the heart of the island's forest watershed that is the primary source of fresh water. (*additional information attached*)

Hawai'i's native forests are irreplaceable biological and cultural assets and the islands' primary source of water. Healthy Hawaiian forests that are not overrun by invasive species act like a sponge, collecting rain and moisture and delivering fresh water into streams and aquifers, absorbing greenhouse gases, and reducing runoff and siltation into near shore waters during storm events. We appreciate the bill's and the Legislature's recognition of these important natural assets that support the globally unique environment and culture of Hawai'i, as well as providing abundant natural benefits to Hawai'i's residents, visitors and economy.

Thank you for the opportunity to offer our support for this bill and watershed protection and management in Hawai'i.

FY 19 Watershed CIP Requests



Features approximate and subject to change. This is a carryover of Watershed CIP lump sum that was requested in FY18.

PĀKU'I WATERSHED PROTECTION - MOLOKA'I



From left to right: View from the Pāku'i project area looking south to the adjacent fringing reef and Keawa Nui fishpond. Proposed endangered *Schiedea diffusa* subsp. *diffusa* was recently discovered in Pāku'i. An aerial view of Pua'ahala - the western most ahupua'a in the Pāku'i project.

SUMMARY

Pāku'i forests are among the last, best unprotected forests on the island of Moloka'i. These forests are the primary source of fresh water for the 'Ualapu'e aquifer, which supplies water to East Moloka'i residents. The main objective of this project is to protect and preserve irreplaceable watershed forest in an effort to safeguard the drinking water supply of the island.

This project is part of the FY19 - "Watershed Protection & Initiatives, Statewide" lump sum CIP request.

This project is part of a regional watershed plan, which can be viewed at: goo.gl/8wEyNr

PROJECT DESCRIPTION

Hawaii's forested watersheds are essential for our way of life. We rely on our forests for the air we breathe, the water we drink, the health of our reefs, the wood for our canoes, the flowers in our lei, the beauty of our islands, a home for our 'aumakua, and our hope against climate change. But due to invasive plants, animals, and disease Hawaii's watersheds are under threat. Today over half of Hawaii's original forests have been lost.

Preventing the loss of more native forest requires a toolbox of management practices. These include removing invasive weeds, controlling ungulates (hooved animals such as pigs, goats, deer), planting native forest species, monitoring forest health, constructing fire breaks, acquiring new land for hunters and hikers, and building protective fences.

This project focuses on the first step of long-term watershed protection - fencing. Fences are the best way to protect watershed forests by eliminating the damage from pigs, goats and deer. Left unchecked, these animals will significantly degrade the native ecosystem through browsing, digging and rooting. This creates bare ground and openings for invasive plants to grow. The longer the forest is left unprotected, the costlier and more difficult it will be to restore.

The 5.5 mile fence will be made from highly durable galvanized steel panels, with an estimated lifetime of over 35 years. Step overs and gates will be installed to allow continued access into the fenced area at all times. For a video clip of the Pakui Project visit: <https://www.youtube.com/watch?v=uTM5MYCAGnw>

EXPECTED BENEFITS

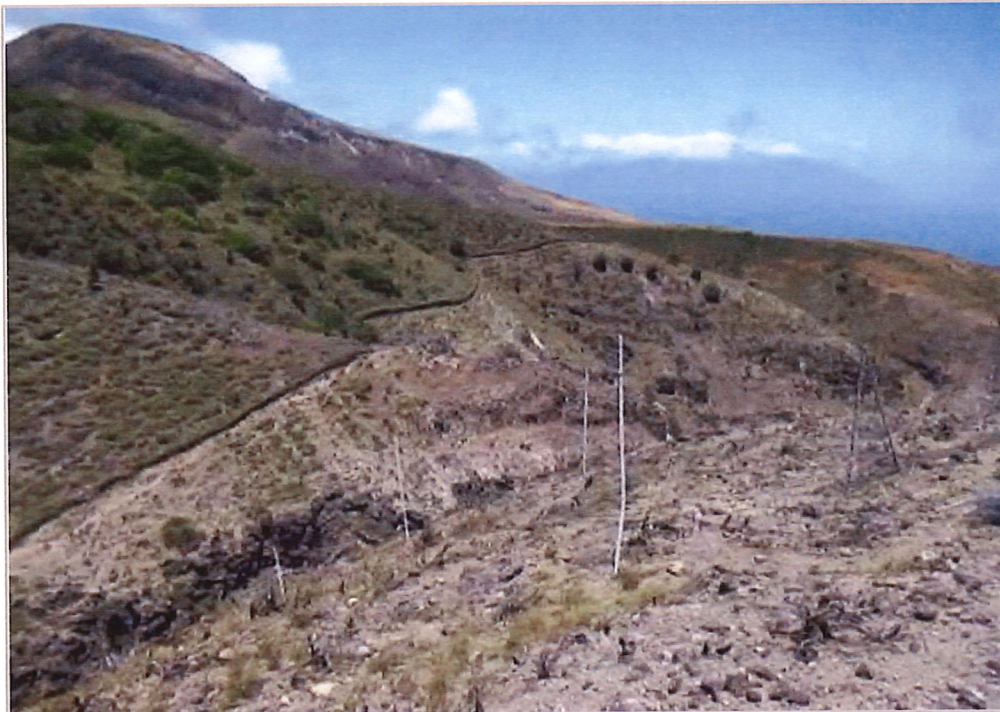
- Protect 2,080 acres of native Moloka'i watershed forest.
- Prevent the loss of rare and endangered species found nowhere else in the world.
- Improve fishpond and reef health on the South Slope by reducing soil erosion.
- Protect an estimated 3 million gallons of water per day of water recharge and preserve Moloka'i's water supply.
- Preserve cultural practices and sites in the wao akua - our native forests.





DIVISION OF FORESTRY AND WILDLIFE

1151 Punchbowl Street, Room 325 | Honolulu, HI 96813



In adjacent protected areas, the forest is recovering dramatically.

DOFAW PROGRAM PRIORITIES



Water



Fire & Forest Health



Native Ecosystems



Forestry



Recreation

PROJECT SUPPORTERS

Pāku'i is a community-led project. Over the course of 3 years, input was gathered from residents, landowners, hunters, fishermen, 'Aha Kiole 'o Moloka'i, and scientists. Support for the project was created through:

- Formation of Mana'e Mauka Working Group
- Community site visits and meetings

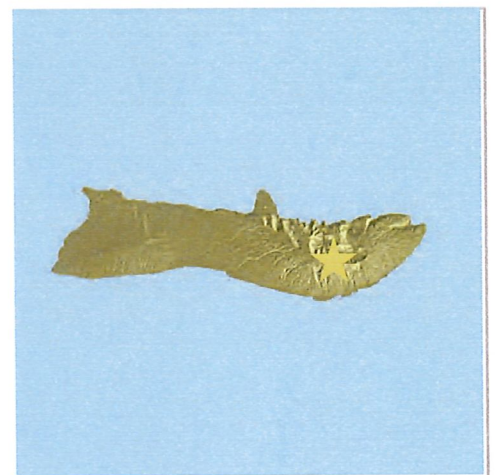
Community input resulted in:

- Traditional & Customary Practices Report for Mana'e, Moloka'i
- Pāku'i Cultural Impact Assessment
- Final Environmental Assessment (EA) that resulted in a finding of no significant impact

NEED FOR PROJECT

Just 15% of Moloka'i's native Hawaiian ecosystems remain. The proposed Pāku'i fence will protect 2,080 acres of native forest on Moloka'i.

Forest watershed protection is one of the most cost effective ways to preserve fresh water supplies. Economists and scientists have documented that when forests are damaged, costs rise significantly to provide water and repair damage from erosion on coral reefs. Hotter and drier conditions from climate change and loss of forests are threatening Hawaii's water supplies.



House District: 13: Rep. Lynn DeCoite

Senate District: 7: Sen. Kalani J. English

BUDGET

TOTAL BUDGET: \$1,180,998

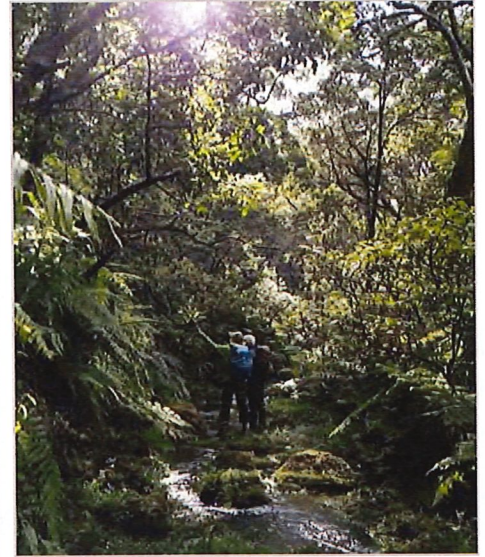
NON-STATE CONTRIBUTORS TO WATERSHED PROTECTION IN EAST MOLOKA'I:

U.S. Fish & Wildlife Service (for acquisition of land at Pua'ahala): \$2.5M
County of Maui, Department of Water Supply: \$250,000 FY18

CONTACT PERSON

Katie Erbak
Watershed Partnerships Program Planner
Katie.C.Ersbak@hawaii.gov
(808) 587-4189

DRINKING GLASS & KOAI'E WATERSHED PROTECTION - KAUA'I



From left to right: The Drinking Glass and Koai'e project, located in the Alaka'i Wilderness Preserve, will protect some of the best intact native forest on Kauai (Photo: Christian Kahahawai). This forest is also home to threatened plants and animals, including the recently listed 'I'iwi.

SUMMARY

The project is located within the Alaka'i Wilderness Preserve in the heart of Kauai and one of the rainiest places on Earth. The main objective of this project is to protect and preserve irreplaceable watershed forest, as well as the rare and endangered plants and wildlife it supports in an effort to safeguard the drinking water supply.

This project is part of the FY19 - "Watershed Protection & Initiatives, Statewide" lump sum CIP request.

This project is part of a regional watershed plan, which can be viewed at: goo.gl/8wEyNr

PROJECT DESCRIPTION

Hawaii's forested watersheds are essential for our way of life. We rely on our forests for the air we breathe, the water we drink, the health of our reefs, the wood for our canoes, the flowers in our lei, the beauty of our islands, a home for our 'aumakua, and our hope against climate change. But due to invasive plants, animals, and disease Hawaii's watersheds are under threat. Today over half of Hawaii's original forests have been lost.

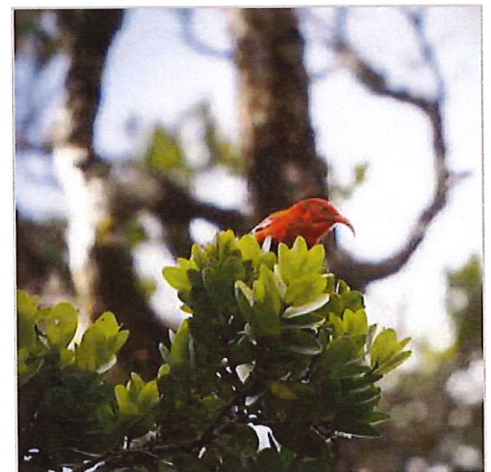
To prevent the loss of more native forest requires a toolbox of management practices. These include removing invasive weeds, controlling ungulates (hooved animals such as pigs, goats, deer), planting native forest species, monitoring forest health, constructing fire breaks, acquiring new land for hunters and hikers, and building protective fences.

This project focuses on the first step of long-term watershed protection - fencing. Fences are the best way to protect watershed forests by eliminating the damage from pigs, goats and black-tailed deer currently found in the area. Left unchecked, these animals will significantly degrade the native ecosystem through browsing, digging and rooting. This creates bare ground and openings for invasive plants to grow. The longer the forest is left unprotected, the costlier and more difficult it will be to restore.

The 5.5 mile fence will be 8 feet high and constructed with corrosion resistant fence materials and deer mesh. Step-overs and gates will be built at strategic places to allow public access into the management unit at all times.

EXPECTED BENEFITS

- Preserve 1,877 acres of priority watershed.
- Protect an estimated 10 million gallons of water per day of water recharge and safeguard drinking water supplies for the entire population of Kauai.
- Reduce erosion that muddies Kauai streams, beaches and reefs.
- Protect source that contributes to water flow into the Waimea River and the perpetuation of traditional practices downstream.
- Ensure the survival of rare plants and animals found only on Kauai.





DIVISION OF FORESTRY AND WILDLIFE

1151 Punchbowl Street, Room 325 | Honolulu, HI 96813



The Alaka'i plateau's forest is the source of Kaua'i's freshwater.

DOFAW PROGRAM PRIORITIES



Water



Fire & Forest Health



Native Ecosystems



Forestry



Recreation

PROJECT SUPPORTERS

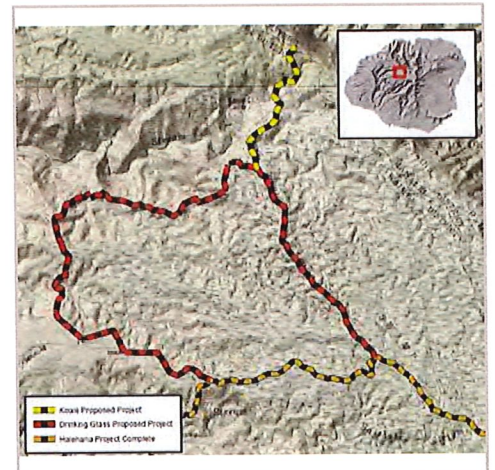
The Drinking Glass and Koai'e project is part of a larger comprehensive watershed management plan to protect the source of Kaua'i's freshwater. Partners and supporters include:

- State of Hawai'i, Department of Land & Natural Resources
- Kaua'i Watershed Alliance, which includes 11 landowners
- The Nature Conservancy
- Garden Island Resource Conservation & Development
- U.S. Fish & Wildlife Service
- U.S. Natural Resources Conservation Service

NEED FOR PROJECT

This major water source for Kaua'i is being threatened by invasive weeds and introduced hooved animals. These threats are also causing the extinction of rare plants and animals.

The fence will connect to two existing fences - the East Alaka'i summit fence and the Halehāhā fence. By doing so, protection of this key watershed area will be increased to 8,838 acres and approximately 10 million gallons of fresh drinking water per day will be protected.



House District: 16: Rep. Dee Morikawa

Senate District: 8: Sen. Ronald Kouchi

BUDGET

TOTAL BUDGET: Drinking Glass (4.6 mi) = \$1,200,000 and Koai'e (0.9 mi) = \$300,000

NON-STATE CONTRIBUTORS TO WATERSHED PROTECTION IN THE ALAKA'I PLATEAU:

Kaua'i County, Department of Water Supply: \$100,000/year

U.S. Natural Resources Conservation Service: \$447,130 (FY18-20)

CONTACT PERSON

Emma Yuen

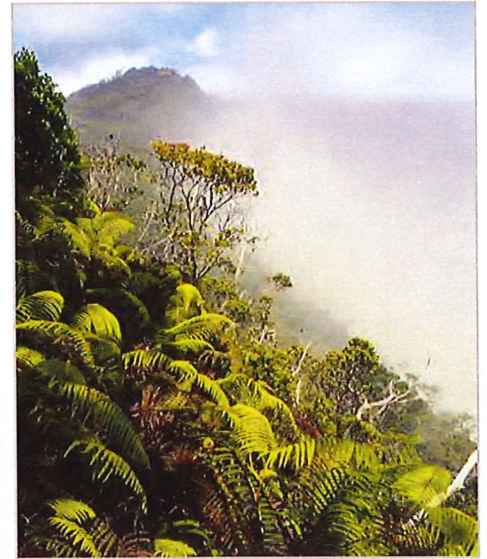
Native Ecosystems Program Manager

Division of Forestry and Wildlife, DLNR

Emma.Yuen@hawaii.gov

(808) 587-4170

EAST ALAKA'I SUMMIT FENCE RETROFIT - KAUA'I



From left to right: The existing East Alaka'i summit fence is located in the Alaka'i plateau - the highest and wettest spot on the island of Kaua'i. The forest is dominated by native shrubs, ferns, and trees including 'ōhi'a that are critical to the capture of rainfall.

SUMMARY

The East Alaka'i summit fence was completed in 2011 and protects approximately 2,000 acres of watershed forest. It is 4.5 miles long and crosses both State and private land. The unit is currently pig-free. However, since the completion of the fence, black-tailed deer have moved from lower elevation areas into the edges of this unit. Deer are able to jump over the existing fence. Because of this, it is necessary to retrofit portions of the fence with an additional 3 feet of deer mesh.

This project is part of the FY19 - "Watershed Protection & Initiatives, Statewide" lump sum CIP request. This project is part of a regional watershed plan, which can be viewed at: goo.gl/8wEyNr

PROJECT DESCRIPTION

At the heart of the island, the East Alaka'i summit fence protects and preserves the greatest and most influential watershed on Kaua'i. Freshwater from rain, mist and fog drip, flows into rivers and streams in all directions. Water moves eastward to the Wailua and Hanalei rivers, north to the Wainiha and Lumaha'i rivers and west joining with the Makaweli and Waimea rivers.

The threat of black-tailed deer moving into this area requires the addition of 3 foot deer mesh, installed on top of the existing 5 foot hog wire fence. The retrofit will help protect the area from both pigs and deer. Deer mesh will be installed along sections of the fence in key ingress areas. By doing so, deer (not people) will be excluded from the unit, allowing the native forest to thrive.

In adjacent protected areas, the forest is recovering dramatically. Ferns, mosses, shrubs, and trees are covering previously barren areas. Staff and volunteers are removing invasive weeds. Rare species are being planted and predators are being removed to aid in the recovery of endangered birds, including the extremely rare Puaiohi, Akeke'e, and Akikiki. Enhancing protection in these key areas through fence retrofits will add to the restoration of these life-giving forests.

EXPECTED BENEFITS

- Enhance protection of 2,000 acres of important watershed forest on Kaua'i.
- Further secure this source of drinking water for the residents and visitors of the island by excluding black-tailed deer.
- Protect the headwaters of the major rivers on Kaua'i, including Wainiha, Hanalei and Wailua.





DIVISION OF FORESTRY AND WILDLIFE

1151 Punchbowl Street, Room 325 | Honolulu, HI 96813



The East Alaka'i fence retrofit will protect riparian vegetation and the streams that are the headwaters for many of the major rivers on Kaua'i.

DOFAW PROGRAM PRIORITIES



Water



Fire & Forest Health



Native Ecosystems



Forestry



Recreation

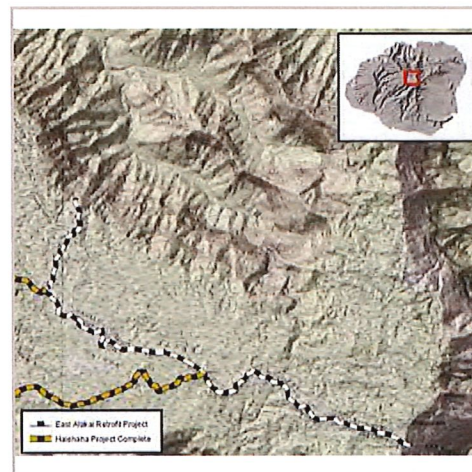
PROJECT SUPPORTERS

The East Alaka'i summit fence retrofit is part of a larger comprehensive watershed management plan to protect the source of Kaua'i's freshwater. Partners and supporters include:

- State of Hawai'i, Department of Land and Natural Resources
- Kaua'i Watershed Alliance, which includes 11 landowners
- The Nature Conservancy
- Garden Island Resource Conservation & Development
- U.S. Fish & Wildlife Service
- U.S. Natural Resources Conservation Service

NEED FOR PROJECT

Hawaii's native forests are exceptionally equipped to maximize the capture and storage of rainfall and moisture. Unfortunately, ungulates such as pigs and deer, pose a significant threat to watershed integrity of Hawaiian forests by browsing, digging and rooting, allowing invasive plants and weeds to grow. The newly completed Halehāhā fence is deer-proof and is located adjacent to the East Alaka'i summit fence. By retrofitting the East Alaka'i summit fence, protection in this area will be significantly enhanced.



House District: 16: Rep. Dee Morikawa

Senate District: 8: Sen. Ronald Kouchi

BUDGET

TOTAL BUDGET: \$350,000

NON-STATE CONTRIBUTORS TO WATERSHED PROTECTION IN THE ALAKA'I PLATEAU:

Kaua'i County, Department of Water Supply: \$100,000/year

U.S. Natural Resources Conservation Service: \$447,130 (FY18-20)

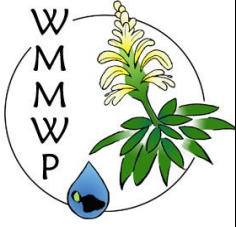
CONTACT PERSON

Katie Erbak

Watershed Partnerships Program Planner

Katie.C.Ersbak@hawaii.gov

(808) 587-4189



West Maui Mountains Watershed Partnership

February 22, 2018

**Supporting HB 2595 Relating to Watersheds
House Committee on Finance
Friday, February 23, 2018, 12:00PM, Room 308**

West Maui Mountains
Watershed Partnership
P.O. Box 13240
Lahaina, Hawai'i
96761
Phone (808) 661-6600
Fax: (808) 661-6604

Aloha Legislators,

Watershed Partners

County of Maui
Dept. of Land &
Natural Resources
Kahoma Land
Holdings, LLC
Ka'anapali Land
Company, LLC
Kahoma Land, LLC
Kamehameha Schools
Makila Land Co., LLC
Maui County
Department of Water
Supply
Maui Land &
Pineapple
Company Inc
Wailuku Water Co.
LLC
The Nature
Conservancy

The West Maui Mountains Watershed Partnership supports several pieces of legislation which benefits watershed protection. **H.B. 2595** is one such vehicle and provides funding for lands which are integral to watershed partnerships throughout the state and Maui and form keystones in the greater watershed network. By supporting the protection of these lands all participating landowners and community stakeholders will benefit as it serves to help our common and valued watershed resources.

While HB 2595 is important, we also ask you to support bills and budget requests offered for consideration by the Department of Land & Natural Resources for watershed management, CIP fencing work (6.5 million requested), and invasive species prevention, control, research, and education. Please also see testimony submitted in support of provisions within this bill by Department of Land and Natural Resources Chairperson, Suzanne Case.

Since our beginning WMMWP has constructed over 23 miles of fence which protects over 29,000 acres of prime source water recharge areas. This firsthand experience makes us confident in the benefits of bills which support fencing and subsequent management. Without support that leads to forest recovery we cannot help to ensure a system of healthy forested watersheds which leads to a sustainable water supply. These lands and their native species cover capture rain and cloud moisture and deliver it efficiently to aquifers and surface sources. Subsequent consumption enhances every aspect of our daily lives and benefits every aspect of our island way of life.



The House of Representatives
Committee on Finance
February 23, 2018
12:00 p.m., Conference Room 308
State Capitol

Testimony in Support of HB 2595

Aloha Chair Luke, Vice Chair Cullen, and Members of the Committee,

The Coordinating Group on Alien Pest Species (CGAPS) **is in support of HB 2595, *Relating to Watersheds***. The aim of this measure is to provide funding to the Department of Land and Natural Resource for watershed protection programs. We note that this bill would appropriate funds from the Natural Area Reserve Fund. We defer to DLNR and the Legislature for best source of funds.

The native ecosystems of Hawai‘i are inundated by invasive plants, animals, and diseases. These ecosystems, specifically wet-forests, are what comprise healthy watersheds that provide freshwater to millions of residents and visitors. The species composition of these forests work harmoniously to capture fog-drip, absorb moisture with spongy-like qualities, and purify water with an intricate layering system before entering streams and aquifers. The composition of the native forest is the best system at capturing water and recharging the aquifers which store most of the freshwater in Hawai‘i. We all rely on freshwater and without it we could not live in these remote islands.

That is why the work performed by organizations like Watershed Partnerships and invasive species programs across the state is so important. They work to restore and preserve intact, native forests that are the main sources of freshwater for surrounding communities. Limited resources are a major impediment to essential invasive species control projects like installing fencing to remove damaging ungulates like feral pigs and deer, and accessing remote areas to remove weeds. The continued work of these projects need reliable sources of funding to continue this important work into the future.

Hawai‘i’s freshwater future relies on watershed protection which this measure will support. We encourage the committees to **support HB 2595**.

Aloha,
Chelsea Arnott
CGAPS

HB-2595-HD-1

Submitted on: 2/22/2018 11:10:45 AM

Testimony for FIN on 2/23/2018 12:00:00 PM

Submitted By	Organization	Testifier Position	Present at Hearing
Melodie Aduja	OCC Legislative Priorities Committee, Democratic Party of Hawai'i	Support	No

Comments:

HB-2595-HD-1

Submitted on: 2/22/2018 12:48:59 PM

Testimony for FIN on 2/23/2018 12:00:00 PM

Submitted By	Organization	Testifier Position	Present at Hearing
Tom Shigemoto	Kauai Watershed Alliance	Support	No

Comments:



Kaua`i Watershed Alliance

Ben A. Dyre Limited Family Partnership, Department of Hawaiian Homelands, Department of Water County of Kaua`i, DLNR – Division of Forestry and Wildlife & Land Management Division, Grove Farm Company, Inc., Jurassic Kahili Ranch, Kamehameha Schools, Kaua`i Ranch LLC, Lihu'e Land Company, McBryde Sugar Company, Ltd., National Tropical Botanical Garden, Princeville Development, LLC

"The Mission of the Kaua`i Watershed Alliance is to PROTECT, PRESERVE and MANAGE our valuable watershed resource for the benefit of our residents, communi

Testimony of the Kauai Watershed Alliance
Supporting HB 2595 Relating to Watersheds
House Committee on Finance
Friday, February 23, 2018, 12:00PM, Room 308

The The Kauai Watershed Alliance supports HB 2595 appropriating funding for the Department of Land and Natural Resources for watershed management across the state, including the construction of protective fences and management of invasive animals and plants at the locations specifically noted in the bill. We support the full operational and capital requests in the DLNR's FY19 supplemental budget requests for the forest and watershed programs within the Division of Forests and Wildlife (DOFAW).

The Kauai Watershed Alliance mission is: *"The Mission of the Kaua`i Watershed Alliance is to PROTECT, PRESERVE and MANAGE our valuable watershed resources for the benefit of our residents, communities and all future generations through the concerted efforts of its members."*. The KWA has already fenced and removed feral ungulates from 7,000 acres and work in 15,000 acres controlling invasive weeds up in the Priority Watersheds on both State and Private lands.

In addition, we call the Committees' attention and offer support for the following proposed protective fence projects on the islands of Kaua`i and Moloka`i that are in the DLNR-DOFAW budget request, but not mentioned in HB 2595:

- Koai'e and Drinking Glass fences on Kaua`i: These areas are located within the Alaka'i Wilderness Preserve in the heart of the island's forest watershed that is the primary source of fresh water.
- Pāku'i fence on Moloka`i: This forest area is the primary source of fresh water for the 'Ualapu'e aquifer, which supplies water to East Moloka`i residents.

Hawai`i's native forests are irreplaceable biological and cultural assets and the islands' primary source of water. Healthy Hawaiian forests that are not overrun by invasive species act like a sponge, collecting rain and moisture and delivering fresh water into streams and aquifers, absorbing greenhouse gases, and reducing runoff and siltation into near shore waters during storm events. We appreciate the bill's and the Legislature's recognition of these important natural assets that support the globally unique environment and culture of Hawai`i, as well as providing abundant natural benefits to Hawai`i's residents, visitors and economy.

Thank you for the opportunity to offer our support for this bill and watershed protection and management in Hawai`i.

Sincerely,

The Kauai Watershed Alliance Membership

c/o KWA Coordinator ▪ The Nature Conservancy ▪ 4371 Puaole Street, Suite C ▪ Lihu`e, Hawai`i 96766



Kaua`i Watershed Alliance

Ben A. Dyre Limited Family Partnership, Department of Hawaiian Homelands, Department of Water County of Kaua`i, DLNR – Division of Forestry and Wildlife & Land Management Division, Grove Farm Company, Inc., Jurassic Kahili Ranch, Kamehameha Schools, Kaua`i Ranch LLC, Lihu`e Land Company, McBryde Sugar Company, Ltd., National Tropical Botanical Garden, Princeville Development, LLC

“The Mission of the Kaua`i Watershed Alliance is to PROTECT, PRESERVE and MANAGE our valuable watersheds resource for the benefit of our residents, communi



February 22, 2018

Testimony from the Hawai'i Association of Watershed Partnerships
Supporting HB 2595 Relating to Watersheds
House Committee on Finance
Friday, February 23, 2018, 12:00 PM, Room 308

East Maui Watershed
Partnership

East Moloka'i Watershed
Partnership

Kaua'i Watershed Alliance

Kohala Watershed
Partnership

Ko'olau Mountain
Watershed Partnership

Leeward Haleakala Watershed
Restoration Partnership

Mauna Kea Watershed Alliance

Three Mountain Alliance

Wai'anae Mountains
Watershed Partnership

West Maui Mountains
Watershed Partnership

url www.hawp.org

The Hawai'i Association of Watershed Partnerships (HAWP) supports House Bill No. 2595, and the projects specifically called out in the measure. In addition, HAWP supports related appropriations under the Department of Land and Natural Resources (DLNR) "Watershed Protection & Initiatives, Statewide" lump sum FY19 CIP request, which include additional watershed protection projects beyond what is stated in HB2595.

These funds support critical watershed protection projects that provide a multitude of benefits, both environmental and social. Just some of these important benefits include: recharge of public water supplies, erosion control and the protection of coral reefs, flood mitigation of lowland areas, climate change resilience, the protection of native habitats and biodiversity, education, recreation, and the creation of meaningful jobs for local communities. The projects also work directly toward meeting the State's commitment of effectively protecting 30% of Hawai'i's priority watersheds by 2030.

HAWP comprises ten Watershed Partnerships across five islands, and works collaboratively with public and private landowners to manage more than 2 million acres of forested watershed areas across Hawai'i. The partnerships play an important role, as they coordinate across landowner boundaries, bringing together many types of landowners and land managers with just as many perspectives and priorities to work toward the common goal of landscape-level, watershed protection. For the past 25 years, the coordinators of these partnerships and their dedicated staff have been working with their diverse partners, including the Department's Division of Forestry and Wildlife (DOFAW), constructing fences, controlling weeds, and removing destructive feral, hooved animals from thousands of acres of priority forested watershed areas throughout the state. This extremely hard work has paid off, with 132,000 acres (16%) of the State's priority watersheds currently fenced, actively managed, and effectively protected. But, continued funding and support is needed.

Protecting and sustaining the forest, the water and the people of Hawai'i.

The project areas prioritized within both HB2595 and the State's FY19 Watershed CIP request will enhance protection by approximately 25,000 acres and make additional progress toward meeting a number of the watershed partnerships' priorities along with the State's 30x30 watershed protection goal. The FY19 Watershed CIP lump sum request includes 15 individual projects across all State counties as listed below. It is important to note that the projects listed in HB2595 detail some but not all of the priority fencing projects that are part of the FY19 Watershed CIP request.

1. Hono O Na Pali, Kaua'i
2. Drinking Glass, Kaua'i
3. Koa'ie, Kaua'i
4. East Alaka'i, Kaua'i
5. Ka'ala, O'ahu
6. Central 'Opae'ula, O'ahu
7. North Shore, Moloka'i
8. Paku'i, Moloka'i
9. Lahaina, Maui
10. West Maui (various locations)
11. Pu'u Wa'awa'a, Hawaii
12. Laupahoehoe, Hawaii
13. Pu'u Maka'ala, Hawaii
14. Ka'u, Hawaii
15. Ka'u-Kaiholena, Hawaii

Thank you for the opportunity to comment on this bill.

Sincerely,



Cheyenne Hiapo Perry
Chair, Hawai'i Association of Watershed Partnerships
Coordinator, Mauna Kea Watershed Alliance
chperry@hawaii.edu
(808) 854-2610

HB-2595-HD-1

Submitted on: 2/22/2018 11:25:35 AM

Testimony for FIN on 2/23/2018 12:00:00 PM

Submitted By	Organization	Testifier Position	Present at Hearing
Benton Kealii Pang, Ph.D.	Individual	Support	No

Comments:

The Watershed Partnerships are one of the best programs run by the Department of Land and Natural Resources. They have proven that public and private partnerships can work together across land boundaries, state and private funds can be used efficiently to achieve mutual goals, local people can be hired for jobs, and the water resources can be protected which is of great benefit to the entire island community. Please pass HB2595 HD1. Mahalo.



SIERRA CLUB OF HAWAI'I
MĀLAMA I KA HONUA. *Cherish the Earth.*

LATE

HOUSE COMMITTEE ON FINANCE

Friday, February 23, 2018 12:00PM Conference Room 308

In SUPPORT of HB 2595 Relating to watersheds

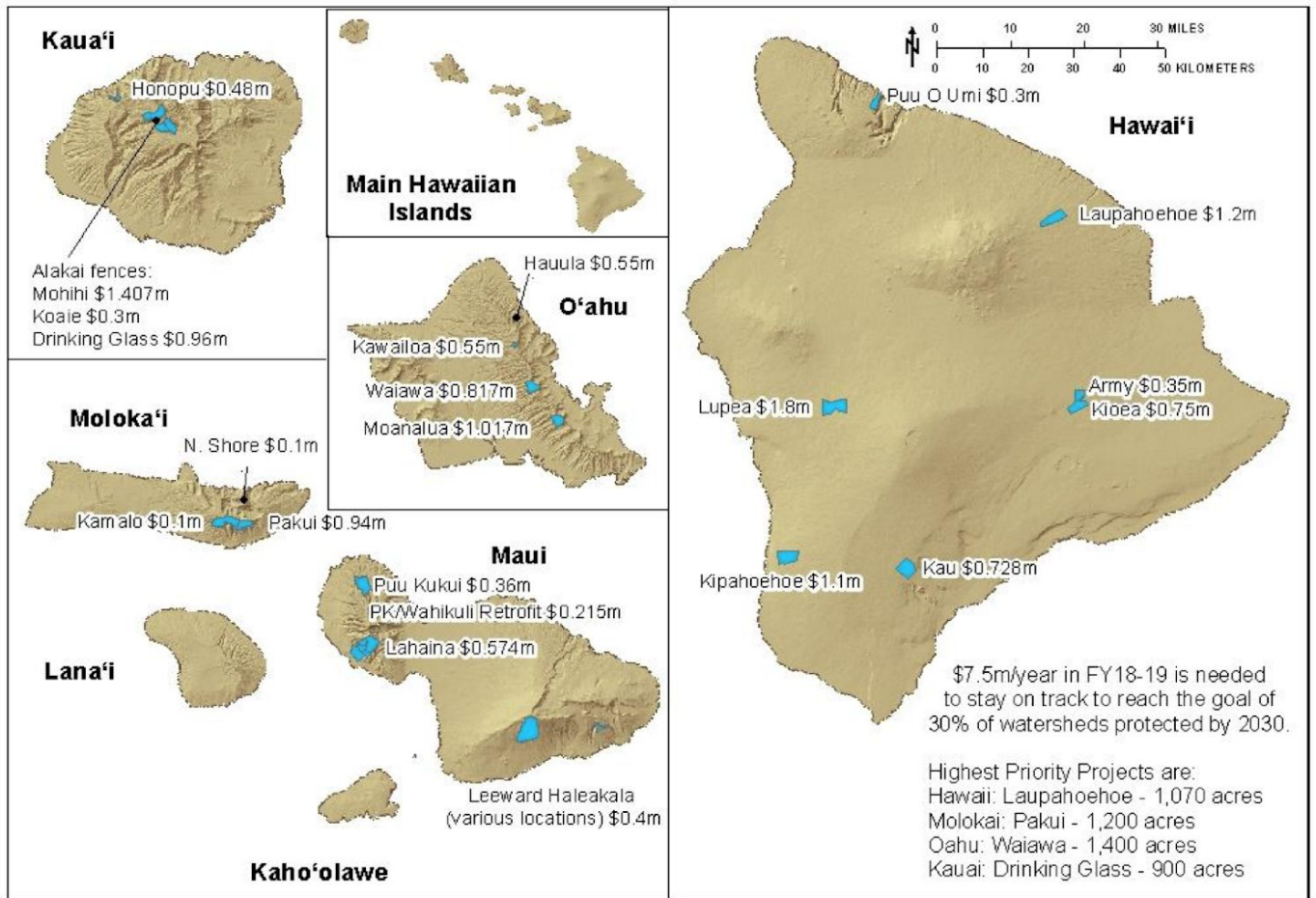
Aloha Chair Luke, Vice Chair Cullen, and members of the Committee,

On behalf of our 20,000 members and supporters, the Sierra Club of Hawai'i, a member of the Common Good Coalition, **supports the intent HB 2595** to provide funding to the Department of Land and Natural Resources (DLNR) for watershed management activities. We recommend expanding the list of projects to include DLNR's watershed priority projects.

Watersheds are foundation of our survival in the Hawaiian Islands. Healthy native forests capture rainwater, preventing harmful runoff and replenishing our future drinking water supplies. It is absolutely crucial that we fund the protection of our watersheds. DLNR, mandated to manage and protect all of Hawai'i's finite natural resources and pristine beauty receives a meager 1.2% of the State budget. Continuing this level of chronic underfunding is a form of negligence that needs to be immediately addressed. That is why we support identifying new funding for the life-saving services DLNR provides.

DLNR has identified the priority watershed areas in need of protection. For this coming fiscal year, DLNR needs \$7.5 million to complete 17 high-priority watershed protection projects throughout the Hawaiian Islands.

Fences Needing Funding in FY18-19 (\$7.5m/year)



Fencelines and projects are approximate and subject to change. Contact DLNR-DOFAW at (808) 587-4170.

For these reasons, **we support the intent of HB 2595 HD1.**

Thank you for the opportunity to submit testimony on this important issue.

BOARD OF WATER SUPPLY

CITY AND COUNTY OF HONOLULU
630 SOUTH BERETANIA STREET
HONOLULU, HI 96843
www.boardofwatersupply.com



February 23, 2018

KIRK CALDWELL, MAYOR

BRYAN P. ANDAYA, Chair
KAPUA SPROAT, Vice Chair
DAVID C. HULIHEE
KAY C. MATSUI
RAY C. SOON

ROSS S. SASAMURA, Ex-Officio
JADE T. BUTAY, Ex-Officio

ERNEST Y. W. LAU, P.E.
Manager and Chief Engineer

ELLEN E. KITAMURA, P.E.
Deputy Manager and Chief Engineer *EW*

The Honorable Sylvia Luke, Chair
and Members
Committee on Finance
Hawaii State Capitol, Room 308
Honolulu, Hawaii 96813

LATE

Dear Chair Luke and Members:

Subject: House Bill 2595, HD 1, Relating to Watersheds

The Honolulu Board of Water Supply (BWS) supports House Bill (HB) 2925, House Draft (HD) 1, which provides an appropriation of funds to support the Department of Land and Natural Resources watershed improvements, fencing and invasive species control in specific watersheds throughout the State.

BWS has provided funding for the purchase of fencing materials for the DLNR Waiawa fencing project, however, additional resources are still needed to complete the project. The protection of our forested watersheds will ensure groundwater and surface water resources are sustained.

Thank you for your consideration of our testimony on HB 2595, HD 1.

Very truly yours,

ERNEST Y. W. LAU, P.E.
Manager and Chief Engineer

LATE

HB-2595-HD-1

Submitted on: 2/23/2018 11:26:43 AM
Testimony for FIN on 2/23/2018 12:00:00 PM

Submitted By	Organization	Testifier Position	Present at Hearing
Janice Jensen	Koʻolau Mountains Watershed Partnership	Support	No

Comments:

Testimony of Janice Jensen
Supporting HB 2595 Relating to Watersheds
House Committee on Finance
Friday, February 23, 2018, 12:00PM, Room 308

I strongly support the Department of Land and Natural Resources for watershed Management, CIP fencing work, and invasive species prevention, control, research, and education programs and activities.

The DLNR Division of Forestry and Wildlife's budget request seeks base operating and CIP funding for the protection of our native forests, which are the source of nearly all the islands' supply of fresh water.

I work for the Koʻolau Mountains Watershed Partnership which performs invasive species control throughout the Koʻolau range here on Oʻahu. The watershed protection funds we receive from the State are consistently leveraged with matching funds from county, federal and private sources to support our program in its mission to protect and sustain our fresh water resources.

We are currently focusing our efforts on a fencing project in the Waiawa watershed. This watershed is a significant contributor to the Pearl Harbor Aquifer, which supplies the majority of Oʻahu's fresh water. Fencing is an important first step to safeguard the native forest from devastation by feral ungulates and enables us to effectively mitigate the threat of invasive plants. The requested CIP funds in this bill will help to partially support this and other worthwhile projects throughout the islands, bringing us closer to our goal of protecting 30% of watershed forests by 2030.

Please support HB2595 to ensure that we can continue to manage our precious natural resources for the health of Hawai'i's environment and people.

Mahalo nui,

Janice A. Jensen
Program and Data Assistant
Ko'olau Mountains Watershed Partnership

LATE

HB-2595-HD-1

Submitted on: 2/23/2018 11:40:49 AM

Testimony for FIN on 2/23/2018 12:00:00 PM

Submitted By	Organization	Testifier Position	Present at Hearing
Pua Heimuli	Koʻolau Mountains Watershed Partnership	Support	No

Comments:

Testimony of Pua Heimuli

Supporting HB 2595 Relating to Watersheds

House Committee on Finance

Friday, February 23, 2018, 12:00PM, Room 308

Born and raised in Koʻolaupoko, the Koʻolau have been the backdrop of my life. It wasn't until I started volunteering and later working for the Koʻolau Mountains Watershed Partnership that I understood the importance of our mauna and it's native forests: it's the main source of Oʻahu's Wai!

For the past three years, we've made it our mission to make that same connection for thousands of residents, students and visitors by providing opportunities through our KMWP outreach program. Volunteers and school/community groups hike with us along NÄ• Ala Hele trails into the ʻEwa Forest Reserve to see the native forest for themselves. Volunteers help us remove invasive weeds in our worksites and replace them with native trees like koa provided by DLNR's Department of Forestry and Wildlife nursery. Students now know and can tell you what a watershed is and their place in them after our presentations. Year-round and summer interns receive experience and training to become future stewards of the Koʻolau. Followers on our social media sites read moʻolelo of the Koʻolau and get a glimpse of the work of KMWP Field Technicians and Volunteers in our natural areas. This combined effort by many who give their time to our organization is for the people of Oʻahu to recognize the importance of our watersheds, where their Wai comes from and to sustain it for coming generations.

But there's more work to be done and people to educate.

We strongly support funding for the Department of Land and Natural Resources for watershed management, CIP fencing work, and invasive species prevention, control,

research, and education programs and activities. It will help us continue to provide these opportunities for our people, not only learn but take on their kuleana to mā• lina mā• lina, the land that feeds us the Wai we all rely on.

Mahalo piha for your support of this bill.

Me ka ha'aha'a,

Pua Heimuli

Community Outreach Liaison for Ko'olau Mountains Watershed Partnership