



STATE OF HAWAII
DEPARTMENT OF EDUCATION
P.O. BOX 2360
HONOLULU, HAWAII 96804

Date: 02/07/2018
Time: 02:10 PM
Location: 309
Committee: House Education

Department: Education

Person Testifying: Dr. Christina M. Kishimoto, Superintendent of Education

Title of Bill: HB 2260 RELATING TO EDUCATION FUNDING.

Purpose of Bill: Requires the Legislative Reference Bureau to conduct a study on the impact of the weighted student formula on small and remote schools to determine whether the formula fulfills its statutory purpose of equalizing operational funding among the State's public schools.

Department's Position:

The Department of Education (Department) takes no position on HB 2260, but provides comments for the committee's consideration.

The Department and the Committee on Weights (COW) are constantly reviewing the issue and revising the formula to provide for the equitable distribution of funds to all Hawaii public schools. The problem continues to be the inadequacy of funding.

In 2005, the Hawaii Board of Education (BOE) commissioned a study to be conducted by Grant Thornton to analyze the adequacy of funding for education in the Hawaii public schools. In 2013, the American Institutes for Research (AIR) conducted a study for the Department to evaluate Hawaii's Weighted Student Formula (WSF). In both cases, issues of school flexibility in the use of the WSF monies, equity of funding, and adequacy of funding for public schools in Hawaii were reviewed. Both studies showed that the Hawaii's WSF was based on enrollment and student needs and that this was applied equitably throughout the State.

However, in both cases, the major concern was the insufficient amount of funding provided to the Department. Various COWs have recommended and the BOE has approved changes in the formula/weighting factor, as well as increasing the WSF base funding at schools. One such recent change occurred when the COW IX recommended, with the BOE approval, that the base funding for K-12 combination schools be increased from \$525,024 during the current school year to \$673,048 for the next school year.

Besides the base funding, the actual amount of funds required to "guarantee the funding of a

minimum number of instructional and support staff to ensure that at least minimum course requirements are maintained" would depend on enrollment, course offerings, and class sizes. The difference between what the schools would receive via the WSF and via categorical funding would vary each time the WSF is run, as the WSF allocations are based on enrollment and student characteristics.

Thank you for the opportunity to provide testimony on this measure.

The Hawaii State Department of Education seeks to advance the goals of the Strategic Plan which is focused on student success, staff success, and successful systems of support. This is achieved through targeted work around three impact strategies: school design, student voice, and teacher collaboration. Detailed information is available at www.hawaiipublicschools.org.

Charlotte A. Carter-Yamauchi
Director

Shawn K. Nakama
First Assistant

Research (808) 587-0666
Revisor **(808) 587-0670**
Fax (808) 587-0681



LEGISLATIVE REFERENCE BUREAU
State of Hawaii
State Capitol, Room 446
415 S. Beretania Street
Honolulu, Hawaii 96813

Written Comments

HB2260 **RELATING TO THE EDUCATION FUNDING**

Testimony by the Legislative Reference Bureau
Charlotte A. Carter-Yamauchi, Director

Presented to the House Committee on Education

Wednesday, February 7, 2018, 2:10 p.m.
Conference Room 309

Chair Woodson and Members of the Committee:

Good afternoon Chair Woodson and members of the Committee, my name is Charlotte Carter-Yamauchi and I am the Director of the Legislative Reference Bureau. Thank you for providing the opportunity to submit written comments on H.B. No. 2260, Relating to Education Funding.

The purpose of this measure is to require the Bureau to conduct a study on the impact of the weighted student formula on small and remote schools to determine whether the formula fulfills its statutory purpose of equalizing operational funding among the State's public schools. The measure specifies that the study shall:

- (1) Include all amounts appropriated and distributed as per pupil funds in accordance with weighted student formula calculations;;
- (2) Describe any general fund cost categories not considered in the determination of weighted student formula funding for small and remote schools;
- (3) Describe any inequities or negative consequences of weighted student formula funding for small and remote schools; and
- (4) Provide any other fiscal information that would be relevant to the Legislative Reference Bureau's study.

The measure defines a "small or remote school" as a public school that is not a public charter school, and that is:

- (1) Located at least a one-hour drive away from the nearest public high school;
- (2) Located on the islands of Lanai, Molokai, or Niihau;
- (3) An elementary school with a student enrollment of less than two hundred students; or
- (4) A secondary school with a student enrollment of less than four hundred students.

The measure also requires:

- (1) The Department of Education, by June 30, 2018, to provide, in a format specified by the Bureau, specific data to the Bureau that details present weighted student formula funding amounts and calculations, to enable the Bureau to focus its study and complete it in a timely manner:
- (2) The Department of Education and Department of Budget and Finance to provide other information and assistance as requested by the Bureau; and
- (3) The Bureau to submit a report of its findings and recommendations, including any proposed legislation, to the Legislature no later than twenty days prior to the convening of the Regular Session of 2019.

The Bureau takes no position on this measure, but submits the following comments for your consideration.

The Bureau would like to note that section 302A-1303.5, Hawaii Revised Statutes, establishes the Committee on Weights and its duties and reads as follows:

"§302A-1303.5 **Committee on weights.** (a) There is established within the department of education the committee on weights to develop a weighted student formula pursuant to section 302A-1303.6. *The committee may:*

- (1) *Create a list of student characteristics that will be weighted;*
- (2) *Create a system of weights based upon the student characteristics that may be applied to determine the relative cost of educating any student;*
- (3) *Determine specific student weights, including their unit value;*
- (4) Determine which moneys shall be included in the amount of funds to be allocated through the weighted student formula;
- (5) Recommend a weighted student formula to the board of education;
- (6) Perform any other function that may facilitate the implementation of the weighted student formula; and

- (7) *Meet not less than once every odd-numbered year, to review the weighted student formula and, if the committee deems it necessary, recommend a new weighted student formula for adoption by the board of education.*

(b) The composition of the committee on weights shall be determined by the board of education based on recommendations from the superintendent of education and dean of the University of Hawaii at Manoa college of education and include principals, teachers, and other members with the appropriate professional skills, experiences, and qualifications needed to facilitate the work of the committee. The superintendent or the superintendent's designee shall chair the committee on weights.

(c) The committee on weights may form advisory subcommittees to obtain input from key stakeholders as determined necessary by the committee.

(d) The members of the committee on weights shall serve at the pleasure of the board of education and shall not be subject to section 26-34. Members of the committee on weights shall serve without compensation but shall be reimbursed for expenses, including travel expenses, necessary for the performance of their duties."

(Emphasis added)

Pursuant to the aforementioned section, it seems that the Committee on Weights was statutorily established to fulfill the purpose of recommending appropriate funding levels to educate students on an ongoing basis. If the Committee on Weights has historically failed to take into consideration the unique challenges of small and remote schools, then the statute should be amended to expressly require it to consider these factors when creating or amending its recommended weighted student formula. Such an amendment to section 302A-1303.5, HRS, would more expeditiously address, on a permanent, ongoing basis, the fiscal equity issues noted in the measure's purpose section instead of a study. An amendment to section 302A-1303.5, HRS, to accomplish this intent could read as follows:

"**§302A-1303.5 Committee on weights.** (a) There is established within the department of education the committee on weights to develop a weighted student formula pursuant to section 302A-1303.6. The committee [~~may~~] shall:

- (1) Create a list of student characteristics that will be weighted;
- (2) Create a system of weights based upon the student characteristics that may be applied to determine the relative cost of educating any student;
- (3) Determine specific student weights, including their unit value;
- (4) Determine which moneys shall be included in the amount of funds to be allocated through the weighted student formula;
- (5) Recommend a weighted student formula to the board of education;
- (6) Perform any other function that may facilitate the implementation of the weighted student formula; and
- (7) Meet not less than once every odd-numbered year, to review the weighted student formula and, if the committee deems it necessary, recommend a new weighted student formula for adoption by the board of education[-]

provided that the committee, when developing its weighted student formula recommendations, shall consider any inequities or negative consequences of its weighted student formula funding recommendations on small and remote schools, report these inequities or negative consequences to the

board, and provide funding adjustment recommendations to ameliorate these inequities or negative consequences.

(b) For the purposes of subsection (a), "small and remote school" means a public school, except for a public school governed by chapter 302D, that is:

- (1) Located at least a one-hour drive away from the nearest public high school;
- (2) Located on the islands of Lanai, Molokai, or Niihau;
- (3) An elementary school with a student enrollment of less than two hundred students; or
- (4) A secondary school with a student enrollment of less than four hundred students.

~~[(b)]~~ (c) The composition of the committee on weights shall be determined by the board of education based on recommendations from the superintendent of education and dean of the University of Hawaii at Manoa college of education and include principals, teachers, and other members with the appropriate professional skills, experiences, and qualifications needed to facilitate the work of the committee. The superintendent or the superintendent's designee shall chair the committee on weights.

~~[(c)]~~ (d) The committee on weights may form advisory subcommittees to obtain input from key stakeholders as determined necessary by the committee.

~~[(d)]~~ (e) The members of the committee on weights shall serve at the pleasure of the board of education and shall not be subject to section 26-34. Members of the committee on weights shall serve without compensation but shall be reimbursed for expenses, including travel expenses, necessary for the performance of their duties."

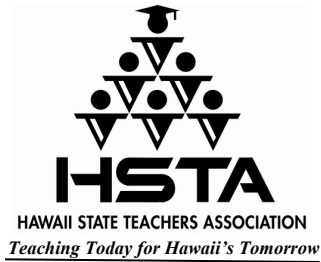
Finally, the Bureau would also like to note that it lacks any specific expertise in how the budget of the Department of Education operates. Due to this lack of expertise, the Bureau feels that it may have to contract the services of a person or entity with relevant budgetary knowledge and experience. If the Bureau is allowed to contract for services, an appropriation for this purpose would need to be added, since there are no funds included in the Bureau's base budget to contract for study services. In addition, to ensure the study can be completed in a timely manner and submitted prior to the 2019 Regular Session, we would request that the contract be made exempt from the Procurement Code (Chapter 103D, HRS).

In summary, if the Committee desires the Bureau to study this issue, to facilitate completion of the requested study in the timeframe provided and ensure an "apples to apples" comparison, the Bureau respectfully requests that the measure be amended to:

- (1) Add an appropriation for an unspecified sum to allow the Bureau to contract for services to conduct the study; and
- (4) Exempt any contract executed for the study from the Procurement Code (Chapter 103D, HRS).

If the measure is amended to address the concerns noted above, the Bureau believes that the services requested under this measure are manageable and that the Bureau will be able to provide the services in the time allotted; provided that the Bureau's interim workload is not adversely impacted by too many other studies or additional responsibilities, such as conducting, writing, or finalizing other reports, drafting legislation, or both, for other state agencies, task forces, or working groups that may be requested or required under other legislative measures.

Thank you again for your consideration.



1200 Ala Kapuna Street ♦ Honolulu, Hawaii 96819
Tel: (808) 833-2711 ♦ Fax: (808) 839-7106 ♦ Web: www.hsta.org

Corey Rosenlee
President

Justin Hughey
Vice President

Amy Perruso
Secretary-Treasurer

Wilbert Holck
Executive Director

TESTIMONY BEFORE THE HOUSE COMMITTEE ON
EDUCATION

RE: HB 2260 - RELATING TO EDUCATION FUNDING

WEDNESDAY, FEBRUARY 7, 2018

COREY ROSENLEE, PRESIDENT
HAWAII STATE TEACHERS ASSOCIATION

Chair Woodson and Members of the Committee:

The Hawaii State Teachers Association **supports HB 2260**, relating to education funding.

Since the passage of Act 51 in 2004, Hawai'i has experimented with a weighted student formula to equalize school funding. Intended to make funding for public education more equitable, transparent, and decentralized, WSF had the unintended consequence of limiting academic programming for children in small and rural schools. A recent report commissioned by the Hawai'i Department of Education and completed by the American Institutes of Research reveals that "small or isolated schools do not have adequate funding under WSF and that the formula does not account adequately for diseconomies of scale associated with small schools or for additional costs due to geographic isolation."

Small and geographically remote schools sometimes lack sufficient funds to cover programming above and beyond basic operations. Isolated communities lack the economic breadth available to their urban counterparts, while experiencing distance from essential services and less access to technology. The AIR, therefore, suggested that "extra support" be provided to schools that are small or isolated, including a recalculation of WSF to "accurately account for the differential costs of providing an equal opportunity for all students to achieve, regardless of their individual needs or circumstances (such as geographic location)."

Because student populations at remote schools vary dramatically from year to year, funding for positions at such schools also changes annually, creating turbulence in

staff requirements and course offerings. Challenges faced by small and remote schools because of inadequate WSF funding include staffing shortages, cutbacks to courses, a lack of librarians, and more. At times, such schools do not have teachers to staff every grade level, if the school is an elementary school, or all core classes, if the school is a secondary school, presenting problems in the provision of minimum educational requirements to students. We cannot allow these schools to continue to struggle because of enrollment and geographical factors beyond their control. Accordingly, we hope that the study called for by this measure reveals ways that small and remote schools can be more equitably and sustainably funded.

To provide all of Hawai'i's children with access to a quality education, the Hawaii State Teachers Association asks your committee to **support** this bill.

HB-2260

Submitted on: 2/2/2018 1:19:02 PM

Testimony for EDN on 2/7/2018 2:10:00 PM

Submitted By	Organization	Testifier Position	Present at Hearing
John Fitzpatrick	fitz for maui	Support	No

Comments:

Aloha Honorable Representatives,

I am in strong support of HB 2260 which conducts a study on the weighted student formula to properly and adequately fund rural schools that have low student enrollments. Through this study we will be better equipped to adjust the weighted student formula so administrators and teachers in rural areas will have the means to recruit the best teachers possible and have the resources they need in their classrooms.

As a teacher that is in a small Charter School(Kihei Charter School), I see the effect of slight changes to student enrollment each year on the ability to provide a quality education. We can do more and need to do more for our rural schools.

Pass HB 2260 so we can see how we can adequately fund our rural schools. This is one small step closer to giving our keiki in Hana, Lanai, and Molokai the schools that they deserve.

Mahalo,
John Fitzpatrick

GRC, HSTA

HB-2260

Submitted on: 2/5/2018 8:03:46 PM

Testimony for EDN on 2/7/2018 2:10:00 PM

Submitted By	Organization	Testifier Position	Present at Hearing
Dr. Ward Mardfin		Support	No

Comments:

February 5, 2018

House Committee on Education

https://www.capitol.hawaii.gov/measure_indiv.aspx?billtype=HB&billnumber=2260

edntestimony@capitol.hawaii.gov

Rep. Justin H. Woodson, Chair

Rep. Sam Satoru Kong, Vice Chair

Re: H.B. No. 2260 RELATING TO EDUCATION FUNDING

We are in support of the above referenced Bill to study the effects of WSF on the remote schools and especially remote K-12 schools such as Hana High and Elementary School.

The WSF funding allocation does not provide the necessary funding to maintain Hana School's educational requirements as set forth by the DOE. The Superintendent's Reserve Fund has assisted in year's past, but still provides an inadequate budget. I appreciate your considering and passing this legislation to assess the negative impacts of WSF on our small, remote and K-12 schools.

In the meantime, while the study is being conducted, consideration needs to be given for the upcoming fiscal year funding to assure that Hana High & Elementary School, as well as any other small remote schools, has adequate funding to offer minimum course requirements and to adequately fund the necessities to operate the school. The Complex Area Superintendent (CAS) Lindsay Ball, recently informed Hana School that the Superintendent Reserve Fund will be eliminated for the 2019-2020 school year further reducing the ability to provide adequate education.

Regards,

Ward Mardfin

Ward Mardfin, Chair

Hana High & Elementary School SCC

P.O. Box

Hana, HI 96713

cc: EDN Members

Richard P. Creagan, Mark J. Hashem, Kaniela Ing, Lei R. Learmont, Angus L. K. McKelvey

Takashi Ohno, Richard H. K. Onishi, Sean Quinlan, Lauren Kealohilani Matsumoto

Personal Addendum:

As Chair of the Hana School Community Council, I continue to be extremely concerned with the serious underfunding of Hana School under the Weighted Student Formula. While the Reserve Fund has provided some minimal relief, this will be discontinued in the future.

Our students are being robbed of their futures by not receiving educational services comparable to that of most other students in the State.

This bill and the LRB study will provide objective evidence and, hopefully, recommended solutions to give our students a fair share of educational opportunities.

Mahalo, Ward Mardfin

HB-2260

Submitted on: 2/6/2018 8:12:12 AM

Testimony for EDN on 2/7/2018 2:10:00 PM

Submitted By	Organization	Testifier Position	Present at Hearing
Anjoleen Hoopai-Waikoloa		Support	No

Comments:

I, Anjoleen Hoopai-Waikoloa, am in full support of HB 2260, to adequately fund Hana high and Elementary School.

HB-2260

Submitted on: 2/6/2018 10:42:32 AM

Testimony for EDN on 2/7/2018 2:10:00 PM

Submitted By	Organization	Testifier Position	Present at Hearing
Kilia Purdy-Avelino		Support	No

Comments:

February 6, 2018

Honorable Justin H. Woodson , Chair
House Committee on Higher Education

SUBJECT: H.B. 2260 RELATING TO EDUCATION FUNDING

Dear Chair Woodson and Committee Members,

Thank you for the opportunity to testify on HB2260. The purpose of this legislation will be to require the legislative Reference Bureau to conduct a study on the impact of the weighted student formula on small and remote schools to determine whether the formula fulfills the statutory purpose of equalizing operational funding among the State's public schools. .

I support this measure for the following reasons:

1. Since the weighted student formula has been in place, Hana High & Elementary School as well as other small, remote schools have been negatively impacted. We need a more equitable distribution of funds.
2. As a member of our Hana School Community Council, I have been involved in the budgeting process and have seen firsthand the negative impacts on our school and its students. They are truly receiving a substandard education. We are not able to fulfill the requirements of the Board of Education without initializing some very creative solutions AT THE EXPENSE of the students.
3. The Complex Area Superintendent, Lindsay Ball, recently informed Hana School that the Superintendent Reserve Fund will be eliminated for the 2019-2020 school year further reducing the ability to provide quality education. Without this fund and/or some other solution, Hana School will not be able to operate. We need a solution for the 2019/20 school year while this study is being done.
4. A good example of inequities in the WSF for these schools is the Athletic Director position. With WSF calculation our school qualifies for about \$9,000 for this position. Not even close to the cost of an AD! As a remote school with limited options our children are heavily involved in and rely on sports for their extra-curricular activities as well as scholarships for continuing education. A study of this nature will most certainly bring these inequities to light.

These are a few of the reasons I endorse this measure.

Mahalo for your consideration,

Dawn Lono, Concerned Citizen
P.O. Box 495
Hana, HI 96713
(808) 248-7513 (daytime)

HB-2260

Submitted on: 2/6/2018 1:59:07 PM

Testimony for EDN on 2/7/2018 2:10:00 PM

Submitted By	Organization	Testifier Position	Present at Hearing
Melodie Aduja	OCC Legislative Priorities	Support	No

Comments:

February 7, 2018

LATE

RE: Testimony in support of HB2200 - Relating to Education Funding. Requires the Legislative Reference Bureau to conduct a study on the impact of the weighted student formula on small and remote schools to determine whether the formula fulfills its statutory purpose of equalizing operational funding among the state's public schools.

Dear Chair Justin H. Woodson, Vice Chair Sam Satoru Kong, and Committee Members of the House Education Committee.

My name is Pomaiikai Poaipuni. I am a freshman at Molokai High School. We approximately have 337 students and 30 teachers at our school.

I am writing this letter in support of HB2200. I am asking you that you fund the study so the Legislature can determine the impact of the weighted student formula on small schools like my school.

I can confirm that our students need more funds at Molokai High School.

In my world history class, there are not enough books. We are not allowed to take books home to study because some have to share with everybody.

Thank you very much for allowing me to submit my testimony.

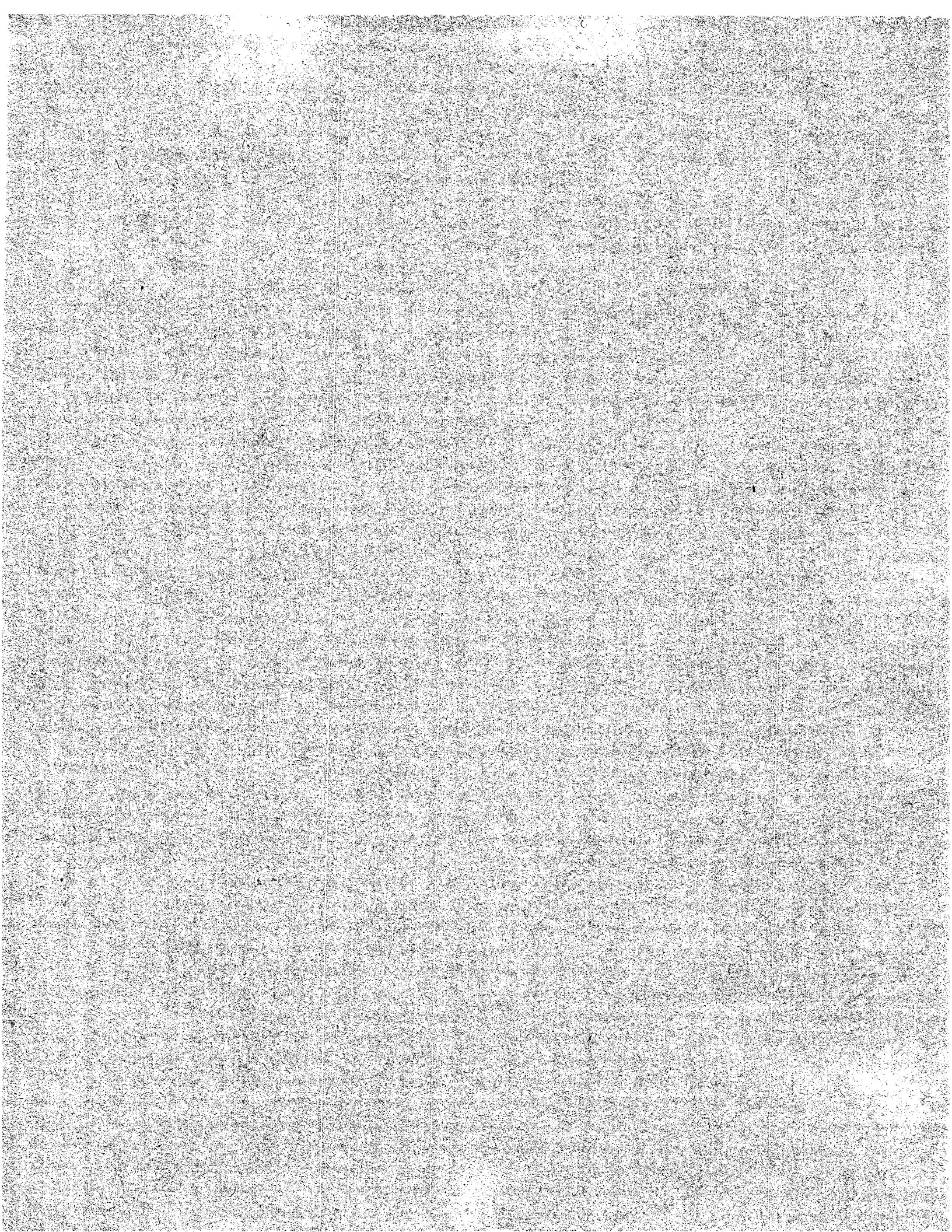
Sincerely,

Pomaiikai Poaipuni

Pomaiikai Poaipuni

Molokai High School

PO Box 158 Hoolanua, HI 96721



Testimony in support of HB2260 - Relating to Education Funding.

Requires the Legislative Reference Bureau to conduct a study on the impact of the weighted student formula on small and remote school to determine whether the formula fulfills its statutory purpose of equalizing operational funding among the state's public school.

Dear Chair Justin H Woodson, vice chair Sam Satoru Kong, and committee members of the House Education Committee.

My name Hokuila Horswill-Carroll, I am a freshman at Molokai High School. We currently have 337 students and 30 teachers at our school.

I am writing this letter in support of HB2260. I am asking that you fund the study so the legislature can determine the impact of the weighted students formula on small schools like my school.

I can confirm that our students need more funds at Molokai High School.

In my math class we do not use books. We have to work on worksheets printed on our office copier.

Thank you very much for allowing me to submit testimony.

Sincerely,
Hokuila

Hokuila H. Carroll
Molokai High School

February 07, 2018

Re: TESTIMONY IN SUPPORT OF HB2260 - RELATING
TO EDUCATION FUNDING.

Requires the Legislative Reference Bureau to conduct a study on the impact of the weighted student formula on small and remote schools to determine whether the formula fulfills its statutory purpose of equalizing operational funding among the state's public schools.

Dear Chair Justin H. Woodson, Vice Chair Sam Satoru Kong,
and Committee Members of the House Education Committee:

My name is Alana Morris. I am a sophomore at Molokai High School. We currently have 337 students and 30 teachers at our school.

I am writing this letter in support of HB2260. I am asking that you fund the study so the legislature can determine the impact of the weighted student formula on small schools like my school.

I can confirm that our students need more funds at Molokai High School.

In my biology class there aren't enough books. We're not allowed to take the books home to study. We have to leave them in class. It would be so much more helpful if we could take the books home to help with my homework.

Alana Morris

Thank you very much for allowing me
to submit testimony.

Sincerely,

Alana Morris

Alana Morris
Molokai High School
PO Box 158
Hoolehua, HI 96729

Alana Morris

February 7, 2018

Re: Testimony in Support of HB2260 - RELATING TO EDUCATION FUNDING.

Requires the Legislative Reference Bureau to conduct a study on the impact of the weighted student formula on small and remote schools to determine whether the formula fulfills its statutory purpose of equalizing operational funding among the State's public schools.

Dear Chair Justin H. Woodson, Vice Chair Sam Satoru Kong, and Committee Members of the House Education Committee:

My name is Kanoa Lealao-Hiro. I am a 9th grader at Molokai High School. We currently have 337 students and 30 teachers at our school.

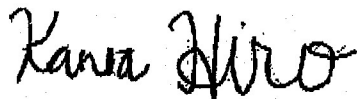
I am writing this letter in support of HB2260. I am asking that you fund the study so the Legislature can determine the impact of the weighted student formula on small schools like my school because

I can confirm that our students need more funds at Molokai High School.

In my English class, we do not use books. We have to work on worksheets printed on our office copier. I wish I had a text book so I could refer to important information instead of constantly looking for the worksheets.

Thank you very much for allowing me to submit testimony.

Sincerely,



Kanoa Lealao-Hiro
Molokai High School
PO Box 158
Hoolchua, HI 96729

February 7, 2018

Re: Testimony in Support of HB2260 - RELATING TO EDUCATION FUNDING.

Requires the Legislative Reference Bureau to conduct a study on the impact of the weighted student formula on small and remote schools to determine whether the formula fulfills its statutory purpose of equalizing operational funding among the State's public schools.

Dear Chair Justin H. Woodson, Vice Chair Sam Satoru Kong, and Committee Members of the House Education Committee:

My name is Kekumu Helm. I am a Junior at Molokai High School. We have a small school, consisting of 337 students and 30 teachers.

I am writing this letter in support of HB2260. I am asking that you fund the study so the Legislature can determine the impact of the weighted student formula on small schools like my school.

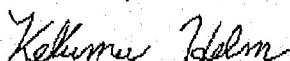
I can confirm that our students need more funds at Molokai High School.

In my chemistry and biology class, we don't have enough supplies to perform experiments and labs. As a result, were limited to what we can learn because we don't have the hands on experience.

In my Algebra 2 honors class, we do not use books. We have to work on worksheets printed on our office copier. It's always ideal to learn from the textbook, but this can't be done if we don't have a sufficient amount of books.

Thank you very much for allowing me to submit testimony.

Sincerely,



Kekumu Helm
Molokai High School
PO Box 158
Hoolehua, HI 96729
808-658-9029

2/7/2018

HB2260 2-7-18 - Google Docs

February 7, 2018

Re: Testimony in Support of HB2260 - RELATING TO EDUCATION FUNDING.

Requires the Legislative Reference Bureau to conduct a study on the impact of the weighted student formula on small and remote schools to determine whether the formula fulfills its statutory purpose of equalizing operational funding among the State's public schools.

Dear Chair Justin H. Woodson, Vice Chair Sam Satoru Kong, and Committee Members of the House Education Committee:

My name is Rayden DeKneef. I am a Senior at Molokai High School. We currently have 337 students and 30 teachers at our school and we need help.

I am writing this letter in support of HB2260. I am asking that you fund the study so the Legislature can determine the impact of the weighted student formula on small schools like my school.

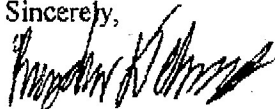
I can confirm that our students need more funds at Molokai High School.

In my Language Arts class, there are not enough books. We are not allowed to take books home to study. We can only use the books in class. This affects me because I believe with taking my books home I am allowed to study more which could yield better scores for tests and quizzes. For those who cannot finish the work on time, they must depend on a mobile device to take a picture of the work. This causes problems because not all students have phones. I feel that a lack of money should not put students at a disadvantage in a public high school setting.

In my Psychology class, we do not use books. We have to work on worksheets printed on our office copier. The books are limited which often results in us students having to share during class time. This sometimes makes learning and staying focused difficult as some of us are independent learners.

Thank you very much for allowing me to submit testimony.

Sincerely,



Rayden DeKneef
Molokai High School
PO Box 158
Hooiehua, HI 96729
Cell 808-658-1094

February 7, 2018

Re: Testimony in Support of HB2260 - RELATING TO EDUCATION FUNDING.

Requires the Legislative Reference Bureau to conduct a study on the impact of the weighted student formula on small and remote schools to determine whether the formula fulfills its statutory purpose of equalizing operational funding among the State's public schools.

Dear Chair Justin H. Woodson, Vice Chair Sam Satoru Kong, and Committee Members of the House Education Committee:

My name is Netanya Kahinu. I am currently a freshman at Molokai High School. We currently have 337 students and 30 teachers at our school and we need help.

I am writing this letter in support of HB2260. I am asking that you fund the study so the Legislature can determine the impact of the weighted student formula on small schools like my school.

I can confirm that our students need more funds at Molokai High School.

In my health core class, there are not enough books. We are not allowed to take books home to study. We can only use the books in class. Sometimes the worksheets we have are really long and some people don't have phones so they can't take a picture of the book instead they have to come in on their own time or we have to cut into our next class time and be behind in our learning.

In my Algebra 1 class, we do not use books. We have to work on worksheets printed on our office copier. Sometimes the copies are low quality and that hinders my learning because I need to clarify what the actual problem is (stray marks). I personally prefer our own personal book that I can take home and use so I'm more organized and won't lose my worksheets.

Thank you very much for allowing me to submit testimony.

Sincerely,



Netanya Kahinu
Molokai High School
PO Box 158
Hoolehua, HI 96729
Cell (808) 646-0667

February 7, 2018

Re: Testimony in Support of HB2260 - RELATING TO EDUCATION FUNDING.

Requires the Legislative Reference Bureau to conduct a study on the impact of the weighted student formula on small and remote schools to determine whether the formula fulfills its statutory purpose of equalizing operational funding among the State's public schools.

Dear Chair Justin H. Woodson, Vice Chair Sam Satoru Kong, and Committee Members of the House Education Committee:

My name is Marc Bumatay . I am a Junior at Molokai High School. We currently have 337 students and 30 teachers at our school.

I am writing this letter in support of HB2260. I am asking that you fund the study so the Legislature can determine the impact of the weighted student formula on small schools like my school.

I can confirm that our students need more funds at Molokai High School.

In my Algebra II class, there are not enough books. We are not allowed to take books home to study. We can only use the books in class and when I have to share my book with someone, it slows me down because I have to wait for my partner to finish. If I had my own textbook, I feel that I could advance at a more rapid pace.

Thank you very much for allowing me to submit testimony.

Sincerely,



Marc Bumatay
Molokai High School
PO Box 158
Hoolehua, HI 96729

February 7, 2018

RE Testimony in support of HB 2260-Relating to
Education Funding

Requires the Legislative Reference Bureau to conduct a
study on the impact of the weighted student formula
on small and remote schools to determine whether the
formula fulfills its statutory purpose of equalizing
operational funding among the states public schools.

Dear chair Justin H. Woodson, Vice Chair Sam Sabaru
Kong, and Committee of the House Education Committee:

My name is Kaira Kaina. I am a freshman at Molokai
Highschool. Currently, we only have 30 teachers and 337
students at our school.

I am writing this letter in support of HB 2260. I am
asking that you fund the study so the legislature can
determine the impact of the weighted student formula
on small schools like Molokai High School.

I can confirm that our students need more funds at
Molokai High School.

In my Leadership class, there are not enough computers.
We can only fit four people at a time out of a
twenty person class. My teacher had to write a grant
for these computers.

In my World History class, we don't have enough books
so we often share amongst three people. And most of
the books are damaged.

Kaira Kaina

In my Algebra I class, we don't use books. We have to work on worksheets printed off the office copier.

Thank you very much for allowing me to submit my testimony.

Sincerely,

Kaira J. Kaina

Kaira J. Kaina

Molokai High School

KAIRAKAINA

February 7, 2018

Re: Testimony in Support of HB2260 - RELATING TO
EDUCATION FUNDING

Requires the Legislative Reference Bureau to conduct a study on the impact of the weighted student formula on small and remote schools to determine whether the formula fulfills its statutory purpose of equalizing operational funding among the state's public schools.

Dear Chair Justin H. Woodson, Vice Chair Sam Saburu Kong, and Committee Members of the House Education Committee:

My name is Maile-Kalaunu Gomes. I am a Junior at Molokai High School. We currently have 377 students and 30 teachers at our school.

I am writing this letter in support of HB2260. I am asking that you fund the study so the legislature can determine the impact of the weighted student formula on small schools like my school.

I can confirm that our students need more funds at Molokai High School.

MRS. KALANUI GOMES

In my ELA class, there isn't enough books. We are not allowed to take books home to study. We can only use the books in class.

Thank you very much for allowing me to submit testimony.

Sincerely,

Maile Kalauni Gomes

Maile-Kalauni Gomes

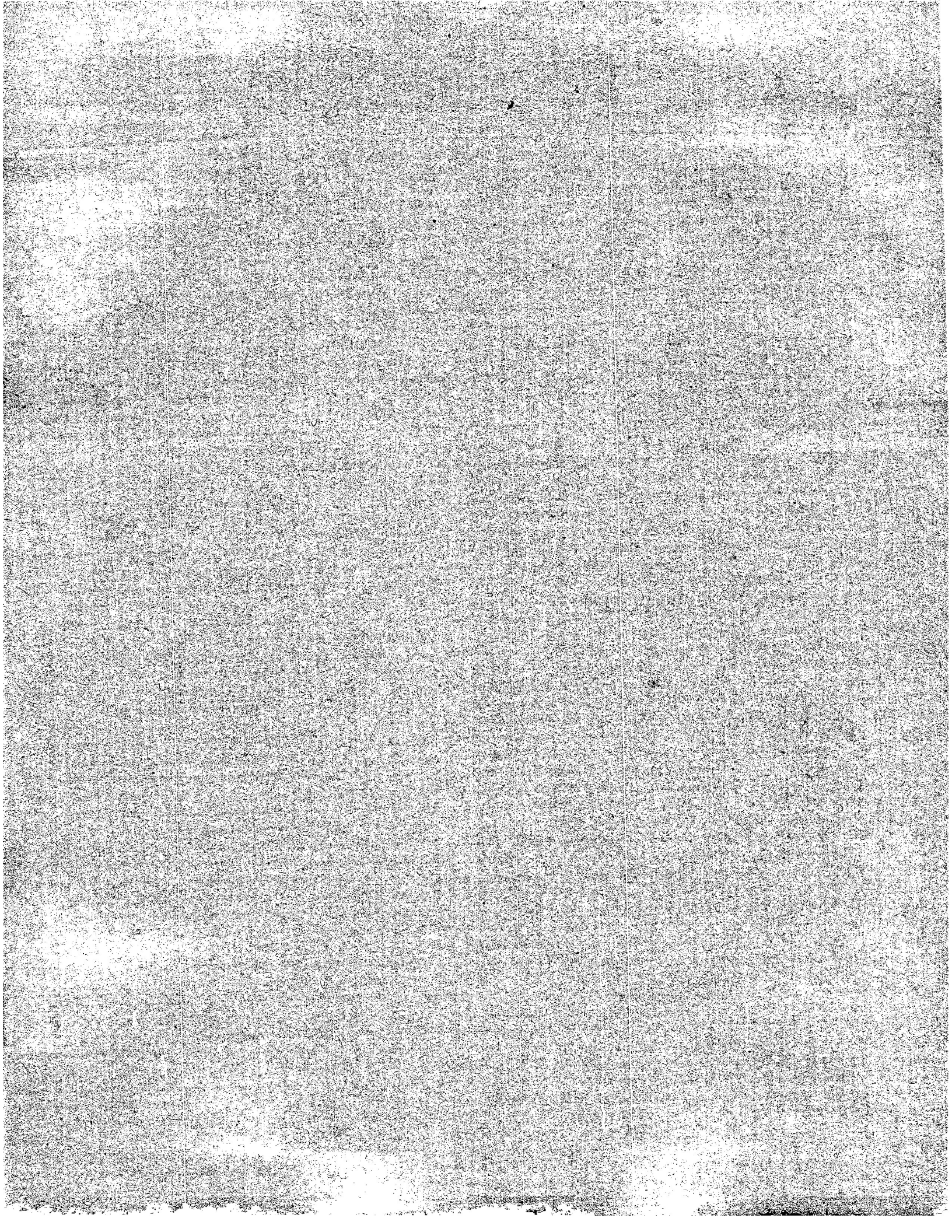
Molokai High School

PO Box 158

Ho'olehua, HI 96721

Cell 808-646-1298

Maile-Kalauni Gomes



February 7, 2018

My Name is Marie Joy Kuahua, I am a sophomore
at Molokai High School.

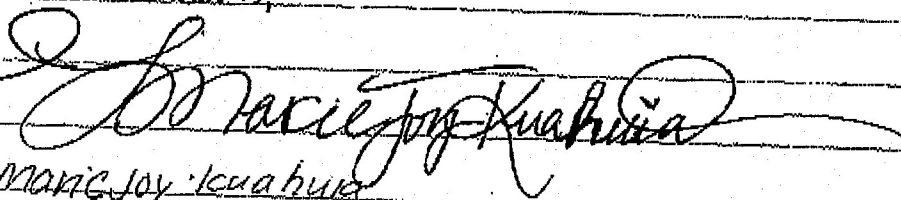
We currently have 337 students and 30 teachers
at our school. I am writing this letter
in support of HB2260. I am asking that you
fund the study so the Legislature can
determine the impact of the weighted
Students formula on small schools
like my school.

I can confirm that our school
need more funding at Molokai High
School. In my Biology class, there are not
enough books. We are not allowed to
take books home to study. We can
only study and use books in class.

In this class we dont have books.
We have to work on work sheets printed on our
office copier.

Thank you very much for allowing
me to submit testimony.

Sincerely,



Marie Joy Kuahua
Molokai High School

P.O. Box 158, Hualalai, HI

February 7, 2018

Re: Testimony in Support of HB2260 - RELATING TO EDUCATION FUNDING.

Requires the Legislative Reference Bureau to conduct a study on the impact of the weighted student formula on small and remote schools to determine whether the formula fulfills its statutory purpose of equalizing operational funding among the State's public schools.

Dear Chair Justin H. Woodson, Vice Chair Sam Satoru Kong, and Committee Members of the House Education Committee:

My name is Peter Keliioomaluu. I am a junior at Molokai High School. We currently have 337 students and 30 teachers at our school.

I am writing this letter in support of HB2260. I am asking that you fund the study so the Legislature can determine the impact of the weighted student formula on small schools like my school.

I can confirm that our students need more funds at Molokai High School.

In my Biology class, there are not enough books. We are not allowed to take books home to study. We can only use the books in class. I would prefer to take the textbook home so I could study and score higher on my tests.

In my Chemistry class, my teacher had to write a grant to purchase chemicals to do experiments.

Also, in my Modern Hawaiian History class, we do not use books. We have to work on worksheets printed on our office copier.

Thank you very much for allowing me to submit testimony.

Sincerely,



Peter Keliioomaluu
Molokai High School
PO Box 158
Hoolehua, HI 96729

February 7, 2018

Re: Testimony in Support of HB2260 - RELATING TO EDUCATION FUNDING. Requires the Legislative Reference Bureau to conduct a study on the impact of the weighted student formula on small and remote schools to determine whether the formula fulfills its statutory purpose of equalizing operational funding among the State's public schools.

Dear Chair Justin H. Woodson, Vice Chair Sam Satoru Kong, and Committee Members of the House Education Committee:

My name is Shai Rawlins. I am a senior at Molokai High School. We currently have 337 students and 30 teachers at our school.

I am writing this letter in support of HB2260. I am asking that you fund the study so the legislature can determine the impact of the weighted student formula on small schools like mine.

In my environmental class, we do not have enough supplies for our experiments. I have participated in hands-on experiments since August 2017.

Recently, we were starting a fracking experiment but had to cancel due to the lack of supplies needed. Also, we had to cancel other experiments because of the lack of supplies and funding.

In my art class, there aren't enough supplies to do our paintings. We have too many students and not enough paint so we are told to do our own thing and share paint trays. We are also told to not trash messed up canvases because there aren't new ones. Basically, we recycle everything.

Thank you very much for allowing me to submit my testimony.

Sincerely,
Shai Rawlins.

Lorralynn-Shai Rawlins-Manuel
Molokai High School
P.O. Box 158
Hobblehua, HI 96729
Cell: 808-567-7100

Shai Rawlins

February 7, 2018

Re: Testimony in Support of HB2260 - RELATING TO EDUCATION FUNDING.

Requires the Legislative Reference Bureau to conduct a study on the impact of the weighted student formula on small and remote schools to determine whether the formula fulfills its statutory purpose of equalizing operational funding among the State's public schools.

Dear Chair Justin H. Woodson, Vice Chair Sam Satoru Kong, and Committee Members of the House Education Committee:

My name is Kaimana Paleka. I am a junior at Molokai High School. We currently have 337 students and 30 teachers at our school.

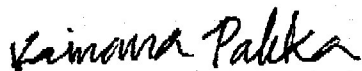
I am writing this letter in support of HB2260. I am asking that you fund the study so the Legislature can determine the impact of the weighted student formula on small schools like my school.

I can confirm that our students need more funds at Molokai High School.

I personally wanted to take Auto Shop 1 and I wanted to learn more about cars and how they work because I want to be an auto mechanic. I wanted to learn more about cars so my mom wouldn't have to take our car to the shop and spend more money but, Auto Shop 1 was not offered because there was no money to pay a teacher. That really was disappointing.

Thank you very much for allowing me to submit testimony.

Sincerely,



Kaimana Paleka
Molokai High School
PO Box 158
Hoolehua, HI 96729

February 7, 2018

Re: Testimony in Support of HB2260 - Relating to Education Funding
Requires the Legislative Preference Bureau to conduct a study on the impact of the weighted student formula fulfills its statutory purpose of equalizing operational funding among the State's public schools.

Dear Chair Justin H. Woodson, Vice Chair Sam Gatom Koo, and Committee Members of the House Education Committee:

My name is Koydena-Lee Nohea Hiphakea 'Okalani Kalawe-Oswald. I am a 12th grader at Molokai High School.

I am writing this letter in support of HB 2260. I am asking that you fund the study so the legislature can determine the impact of the weighted student formula on small schools like my school.

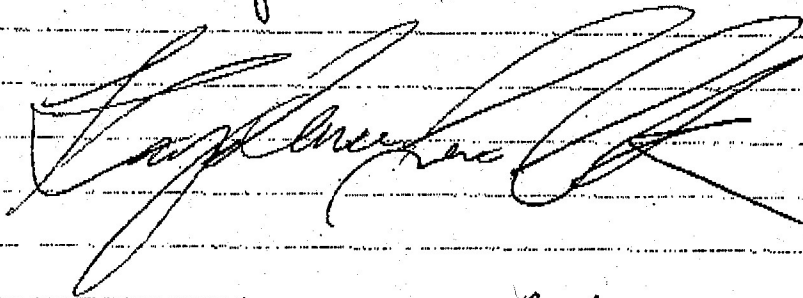
I can confirm that our students need more funds at Molokai High School.

In my Psychology class, there is not enough books in the class to take home. We can only use them in class, but have to take tests on the readings.

Thank you very much for allowing me to submit testimony.

Koydena Oswald

Sincerely,



Kaydence-lee Oswald-Kalawe
Molokai High School
PO BOX 1508
Hoolahua, HI 96729
Cell 808-698-0909

Kaydence Oswald

DAVID Y. IGE
GOVERNOR

CHRISTINA KISHIMOTO
SUPERINTENDENT



LINDSAY BALL
COMPLEX AREA SUPERINTENDENT

STAN HAO
PRINCIPAL

Molokai High School

P O Box 158
2140 Farrington Avenue
Hoelehua, Hawaii 96729
Phone: 567-6950 Fax: 567-6960

FAX TRANSMITTAL

DATE: 2-7-2018

TO: LYNN DECOITE - / STAFF
Email/Fax: 808.586.6779

FROM: LISA TAKATA
RE: TESTIMONY - HB 2260
PAGES: 21 (including cover page)

- Urgent
- Please review
- Please reply
- For your files
- Per your request

CONFIDENTIALITY NOTICE: This fax transmittal, including any attachments, is for the sole use of the intended recipient(s) and may contain confidential and/or privileged information. Any review, use, disclosure, or distribution by unintended recipient is prohibited. If you are not the intended recipient, please contact the sender.

AN AFFIRMATIVE ACTION AND EQUAL OPPORTUNITY EMPLOYER

February 7, 2018

Re: Testimony in support of HB2200 - Relating to Education Funding. Requires the Legislative Reference Bureau to conduct a study on the impact of the weighted student formula on small and remote schools to determine whether the formula fulfills its statutory purpose of equalizing operational funding among the State's public schools.

Dear Chair Justini H. Woodson, Vice Chair Sam Satoru Kong, and Committee Members of the House Education Committee:

My name is Pomaikai Poaipuni. I am a freshman at Molokai High School. We approximately have 337 students and 30 teachers at our school.

I am writing this letter in support of HB2200. I am asking you that you fund the study so the Legislature can determine the impact of the weighted student formula on small schools like my school.

I can confirm that our students need more funds at Molokai High School.

In my world history class, there are not enough books. We are not allowed to take books home to study because some have to share with everyone.

Thank you very much for allowing me to submit my testimony.

Sincerely,

Pomaikai Poaipuni

Pomaikai Poaipuni

Molokai High School

PO Box 158 Hoolanua, HI 96721

Testimony in support of HB2260 - Relating to Education Funding.

REQUIRES the Legislative Reference Bureau to conduct a study on the impact of the weighted student formula on small and remote schools to determine whether the formula fulfills its statutory purpose of equalizing operational funding among the state's public schools.

Dear Chair Justin H. Woodson, Vice Chair Sam Satoru Kong, and committee members of the House Education Committee:

My name HOKULIPE Horswill-Carroll, I am a Freshman at Molokai High School. We currently have 337 students and 30 teachers at our school.

I am writing this letter in support of HB2260. I am asking that you fund the study so the legislature can determine the impact of the weighted students formula on small schools like my school.

I can confirm that our students need more funds at Molokai High School.

In my math class we do not use books. We have to work on worksheets printed on our office copier.

Thank you very much for allowing me to submit this testimony.

Sincerely,
Hokulipe

HOKULIPE H. Carroll
Molokai High School

February 07, 2018

Re: Testimony in Support of HB2260 - RELATING
TO EDUCATION FUNDING.

Requires the Legislative Reference Bureau to conduct a study on the impact of the weighted student formula on small and remote schools to determine whether the formula fulfills its statutory purpose of equalizing operational funding among the state's public schools.

Dear Chair Justin H. Woodson, Vice Chair Sam Gannon Kong,
and Committee Members of the House Education Committee:

My name is Alana Morris. I am a sophomore at Molokai High School. We currently have 337 students and 30 teachers at our school.

I am writing this letter in support of HB2260. I am asking that you fund the study so the Legislature can determine the impact of the weighted student formula on small schools like my school.

I can confirm that our students need more funds at Molokai High School.

In my biology class there aren't enough books. We're not allowed to take the books home to study. We have to leave them in class. It would be so much more helpful if we could take the books home to help with my homework.

Alana Morris

Thank you very much for allowing me
to submit testimony.

Sincerely,

Alana Morris

Alana Morris
Molokai High School
P.O. Box 158
Hoolehua, HI 96729

Alana Morris

February 7, 2018

Re: Testimony in Support of HB2260 - RELATING TO EDUCATION FUNDING.

Requires the Legislative Reference Bureau to conduct a study on the impact of the weighted student formula on small and remote schools to determine whether the formula fulfills its statutory purpose of equalizing operational funding among the State's public schools.

Dear Chair Justin H. Woodson, Vice Chair Sam Satoru Kong, and Committee Members of the House Education Committee:

My name is Kanoa Lealao-Hiro. I am a 9th grader at Molokai High School. We currently have 337 students and 30 teachers at our school.

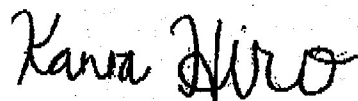
I am writing this letter in support of HB2260. I am asking that you fund the study so the Legislature can determine the impact of the weighted student formula on small schools like my school because

I can confirm that our students need more funds at Molokai High School.

In my English class, we do not use books. We have to work on worksheets printed on our office copier. I wish I had a text book so I could refer to important information instead of constantly looking for the worksheets.

Thank you very much for allowing me to submit testimony.

Sincerely,



Kanoa Lealao-Hiro
Molokai High School
PO Box 158
Hooluhua, HI 96729

February 7, 2018

Re: Testimony in Support of HB2260 - RELATING TO EDUCATION FUNDING.

Requires the Legislative Reference Bureau to conduct a study on the impact of the weighted student formula on small and remote schools to determine whether the formula fulfills its statutory purpose of equalizing operational funding among the State's public schools.

Dear Chair Justin H. Woodson, Vice Chair Sam Satoru Kong, and Committee Members of the House Education Committee:

My name is Kekumu Helm. I am a Junior at Molokai High School. We have a small school, consisting of 337 students and 30 teachers.

I am writing this letter in support of HB2260. I am asking that you fund the study so the Legislature can determine the impact of the weighted student formula on small schools like my school.

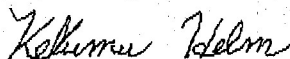
I can confirm that our students need more funds at Molokai High School.

In my chemistry and biology class, we don't have enough supplies to perform experiments and labs. As a result, were limited to what we can learn because we don't have the hands on experience.

In my Algebra 2 honors class, we do not use books. We have to work on worksheets printed on our office copier. It's always ideal to learn from the textbook, but this can't be done if we don't have a sufficient amount of books.

Thank you very much for allowing me to submit testimony.

Sincerely,



Kekumu Helm
Molokai High School
PO Box 158
Hoolehua, HI 96729
808-658-9029

2/7/2018

HB2260 2-7-18 - Google Docs

February 7, 2018

Re: Testimony in Support of HB2260 - RELATING TO EDUCATION FUNDING.

Requires the Legislative Reference Bureau to conduct a study on the impact of the weighted student formula on small and remote schools to determine whether the formula fulfills its statutory purpose of equalizing operational funding among the State's public schools.

Dear Chair Justin H. Woodson, Vice Chair Sam Satoru Kong, and Committee Members of the House Education Committee:

My name is Rayden DeKneef. I am a Senior at Molokai High School. We currently have 337 students and 30 teachers at our school and we need help.

I am writing this letter in support of HB2260. I am asking that you fund the study so the Legislature can determine the impact of the weighted student formula on small schools like my school.

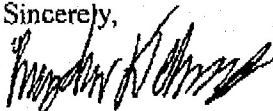
I can confirm that our students need more funds at Molokai High School.

In my Language Arts class, there are not enough books. We are not allowed to take books home to study. We can only use the books in class. This affects me because I believe with taking my books home I am allowed to study more which could yield better scores for tests and quizzes. For those who cannot finish the work on time, they must depend on a mobile device to take a picture of the work. This causes problems because not all students have phones. I feel that a lack of money should not put students at a disadvantage in a public high school setting.

In my Psychology class, we do not use books. We have to work on worksheets printed on our office copier. The books are limited which often results in us students having to share during class time. This sometimes makes learning and staying focused difficult as some of us are independent learners.

Thank you very much for allowing me to submit testimony.

Sincerely,



Rayden DeKneef
Molokai High School
PO Box 158
Hoolahua, HI 96729
Cell 808-658-1094

February 7, 2018

Re: Testimony in Support of HB2260 - RELATING TO EDUCATION FUNDING.

Requires the Legislative Reference Bureau to conduct a study on the impact of the weighted student formula on small and remote schools to determine whether the formula fulfills its statutory purpose of equalizing operational funding among the State's public schools.

Dear Chair Justin H. Woodson, Vice Chair Sam Satoru Kong, and Committee Members of the House Education Committee:

My name is Netanya Kahinu. I am currently a freshman at Molokai High School. We currently have 337 students and 30 teachers at our school and we need help.

I am writing this letter in support of HB2260. I am asking that you fund the study so the Legislature can determine the impact of the weighted student formula on small schools like my school.

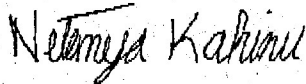
I can confirm that our students need more funds at Molokai High School.

In my health core class, there are not enough books. We are not allowed to take books home to study. We can only use the books in class. Sometimes the worksheets we have are really long and some people don't have phones so they can't take a picture of the book instead they have to come in on their own time or we have to cut into our next class time and be behind in our learning.

In my Algebra 1 class, we do not use books. We have to work on worksheets printed on our office copier. Sometimes the copies are low quality and that hinders my learning because I need to clarify what the actual problem is (stray marks). I personally prefer our own personal book that I can take home and use so I'm more organized and won't lose my worksheets.

Thank you very much for allowing me to submit testimony.

Sincerely,



Netanya Kahinu
Molokai High School
PO Box 158
Hoolehua, HI 96729
Cell (808) 646-0667

February 7, 2018

Re: Testimony in Support of HB2260 - RELATING TO EDUCATION FUNDING.

Requires the Legislative Reference Bureau to conduct a study on the impact of the weighted student formula on small and remote schools to determine whether the formula fulfills its statutory purpose of equalizing operational funding among the State's public schools.

Dear Chair Justin H. Woodson, Vice Chair Sam Satoru Kong, and Committee Members of the House Education Committee:

My name is Marc Bumatay . I am a Junior at Molokai High School. We currently have 337 students and 30 teachers at our school.

I am writing this letter in support of HB2260. I am asking that you fund the study so the Legislature can determine the impact of the weighted student formula on small schools like my school.

I can confirm that our students need more funds at Molokai High School.

In my Algebra II class, there are not enough books. We are not allowed to take books home to study. We can only use the books in class and when I have to share my book with someone, it slows me down because I have to wait for my partner to finish. If I had my own textbook, I feel that I could advance at a more rapid pace.

Thank you very much for allowing me to submit testimony.

Sincerely,



Marc Bumatay
Molokai High School
PO Box 158
Hoolehua, HI 96729

February 7, 2018

RE Testimony in support of HB 2260- relating to
Education Funding

Requires the Legislative Reference Bureau to conduct a
study on the impact of the weighted student formula
on small and remote schools to determine whether the
formula fulfills its statutory purpose of equalizing
operational funding among the states public schools.

Dear chair Justin H. Woodson, vice chair Sam Sabara
Kong, and committee of the House Education Committee:

My name is Kaira Kaina. I am a freshman at Molokai
Highschool. Currently, we only have 30 teachers and 337
students at our school.

I am writing this letter in support of HB2260. I am
asking that you fund the study so the Legislature can
determine the impact of the weighted student formula
on small schools like Molokai High School.

I can confirm that our students need more funds at
Molokai High School.

In my Leadership class, there are not enough computers.
We can only fit four people at a time out of a
twenty person class. My teacher had to write a grant
for these computers.

In my World History class, we don't have enough books
so we often share amongst three people. And most of
the books are damaged.

Kaira Kaina

In my Algebra I class, we don't use books. We have to work on worksheets printed off the office copier.

Thank you very much for allowing me to submit my testimony.

Sincerely,

Kaira J. Kaina

Kaira J. Kaina

Molokai High School

KAIRAKAINA

February 7, 2018

Re: Testimony in Support of HB2260 - RELATING TO
EDUCATION FUNDING

Requires the Legislative Reference Bureau to conduct
a study on the impact of the weighted student
formula on small and remote schools to
determine whether the formula fulfills its
statutory purpose of equalizing operational
funding among the State's public schools.

Dear Chair Justin H. Woodson, Vice Chair Sam
Satoru Kong, and Committee Members of the
House Education Committee:

My name is Maile-Kalauna Gomes. I am a
Junior at Molokai High School. We currently
have 377 students and 20 teachers at our
school.

I am writing this letter in support of HB2260.
I am asking that you fund the study so the
Legislature can determine the impact of the
weighted student formula on small schools
like my school.

I can confirm that our students need more
funds at Molokai High School.

Maile-Kalauna Gomes

In my ELA class, there isn't enough books. We are not allowed to take books home to study. We can only use the books in class.

Thank you very much for allowing me to submit testimony.

Sincerely,

Maike Kalauni Gomes

Maike-Kalauni Gomes

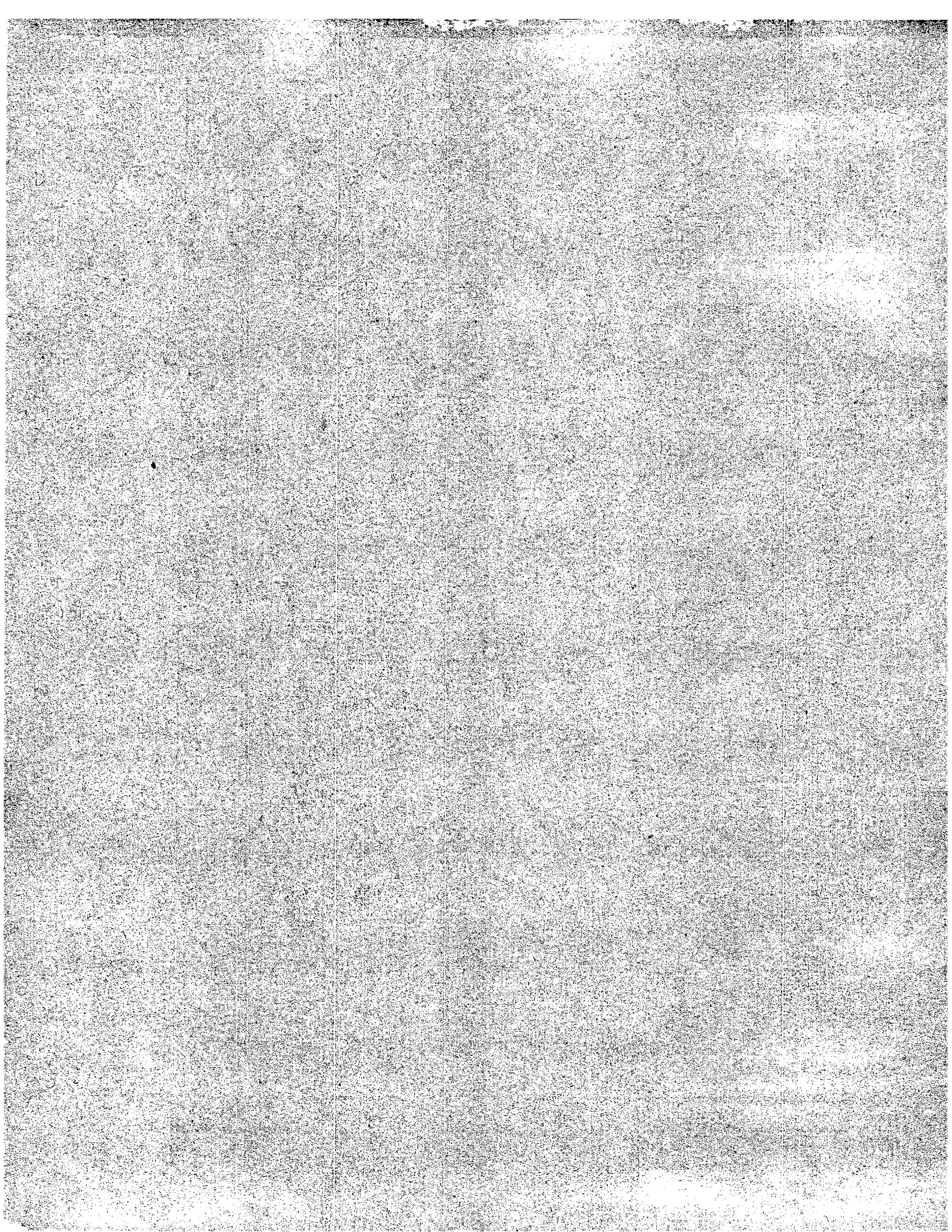
Molokai High School

PO Box 158

Ho'olehua, HI 96729

Cell 808-646-1298

Maike Kalauni Gomes



February 7, 2018

My Name is Marie-joy Kuahua, I am a sophomore
at Molokai High School.

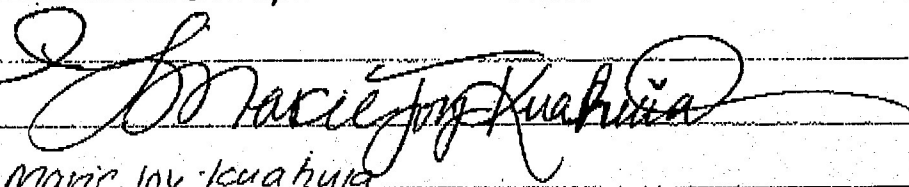
We currently have 337 students and 30 teachers
at our school. I am writing this letter
in support of HB2260. I am asking that you
fund the study so the Legislature can
determine the impact of the weighted
students formula on small schools
like my school.

I can confirm that our school
need more funding at Molokai High
School. In my Biology class, there are not
enough books. We are not allowed to
take books home to study. We can
only study and use books in class.

In this class we don't have books.
We have to work on work sheets printed on our
office copier.

Thank you very much for allowing
me to submit testimony.

Sincerely,



Marie-joy Kuahua

Molokai High School

P.O. Box 158, Haaheku, HI

February 7, 2018

Re: Testimony in Support of HB2260 - RELATING TO EDUCATION FUNDING.

Requires the Legislative Reference Bureau to conduct a study on the impact of the weighted student formula on small and remote schools to determine whether the formula fulfills its statutory purpose of equalizing operational funding among the State's public schools.

Dear Chair Justin H. Woodson, Vice Chair Sam Satoru Kong, and Committee Members of the House Education Committee:

My name is Peter Keliioomaluu. I am a junior at Molokai High School. We currently have 337 students and 30 teachers at our school.

I am writing this letter in support of HB2260. I am asking that you fund the study so the Legislature can determine the impact of the weighted student formula on small schools like my school.

I can confirm that our students need more funds at Molokai High School.

In my Biology class, there are not enough books. We are not allowed to take books home to study. We can only use the books in class. I would prefer to take the textbook home so I could study and score higher on my tests.

In my Chemistry class, my teacher had to write a grant to purchase chemicals to do experiments.

Also, in my Modern Hawaiian History class, we do not use books. We have to work on worksheets printed on our office copier.

Thank you very much for allowing me to submit testimony.

Sincerely,



Peter Keliioomaluu
Molokai High School
PO Box 158
Hoolehua, HI 96729

February 7, 2018

Re: Testimony in Support of HB2260 - RELATING TO EDUCATION FUNDING. Requires the Legislative Reference Bureau to conduct a study on the impact of the weighted student formula on small and remote schools to determine whether the formula fulfills its statutory purpose of equalizing operational funding among the State's public schools.

Dear Chair Justin H. Woodson, Vice Chair Sam Satoru Kong, and Committee Members of the House Education Committee:

My name is Shai Rawlins. I am a senior at Molokai High School. We currently have 337 students and 30 teachers at our school.

I am writing this letter in support of HB2260. I am asking that you fund the study so the legislature can determine the impact of the weighted student formula on small schools like mine.

In my environmental class, we do not have enough supplies for our experiments. I have participated in hands-on experiments since August 2017.

Recently, we were starting a fracking experiment but had to cancel due to the lack of supplies needed. Also, we had to cancel other experiments because of the lack of supplies and funding.

Shai Rawlins

In my art class, there aren't enough supplies to do our paintings. We have too many students and not enough paint so we are told to do our own thing and share paint trays. We are also told to not trash messed up canvases because there aren't new ones. Basically, we recycle everything.

Thank you very much for allowing me to submit my testimony.

Sincerely,
Shai Rawlins.

Lorralynn-Shai Rawlins-Manuel
Molokai High School
P.O. Box 158
Hoolehua, HI 96729
Cell: 808-567-7100

Shai Rawlins

February 7, 2018

Re: Testimony in Support of HB2260 - RELATING TO EDUCATION FUNDING.

Requires the Legislative Reference Bureau to conduct a study on the impact of the weighted student formula on small and remote schools to determine whether the formula fulfills its statutory purpose of equalizing operational funding among the State's public schools.

Dear Chair Justin H. Woodson, Vice Chair Sam Satoru Kong, and Committee Members of the House Education Committee:

My name is Kaimana Paleka. I am a junior at Molokai High School. We currently have 337 students and 30 teachers at our school.


I am writing this letter in support of HB2260. I am asking that you fund the study so the Legislature can determine the impact of the weighted student formula on small schools like my school.

I can confirm that our students need more funds at Molokai High School.

I personally wanted to take Auto Shop 1 and I wanted to learn more about cars and how they work because I want to be an auto mechanic. I wanted to learn more about cars so my mom wouldn't have to take our car to the shop and spend more money but, Auto Shop 1 was not offered because there was no money to pay a teacher. That really was disappointing.

Thank you very much for allowing me to submit testimony.

Sincerely,



Kaimana Paleka
Molokai High School
PO Box 158
Hoolehua, HI 96729

February 7, 2018

Re: Testimony in Support of HB22160 - Relating
to Education Funding

Requires the Legislative Preference Bureau to
conduct a study on the impact of the weighted
student formula fulfills its statutory purpose
of equalizing operational funding among the
State's public schools.

Dear Chair Justin H. Woodson, Vice Chair
Sam Satom Kady, and Committee Members of
the House Education Committee:

My name is Kayden Lee Nohea Hipwaka
'Okalani Kalawe-Oswald. I am a 12th grader at
Molokai High School.

I am writing this letter in support of
HB 22160. I am asking that you fund the
study so the Legislature can determine the
impact of the weighted student formula
on small schools like my school.

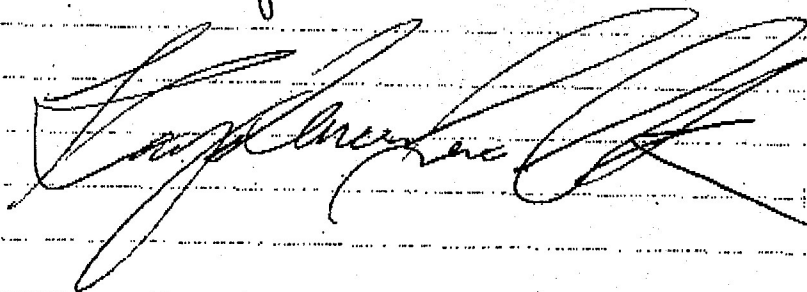
I can confirm that our students need more
funds at Molokai High School.

In my Psychology class, there is not
enough books in the class to take home.
We can only use them in class, but have
to take tests on the readings.

Thank you very much for allowing me to
submit testimony.

Kayden Oswald

Sincerely,



Kaydence-lee Oswald-Kalawe
Molokai High School
PO BOX 198
Hoolahua, HI 96729
Cell 808-698-0909

Kaydence Oswald