

House District(s) 27

Senate District(s) 13

THE TWENTY-NINTH LEGISLATURE  
APPLICATION FOR GRANTS  
CHAPTER 42F, HAWAII REVISED STATUTES

Log No:

For Legislature's Use Only

Type of Grant Request:

GRANT REQUEST – OPERATING

GRANT REQUEST – CAPITAL

"Grant" means an award of state funds by the legislature, by an appropriation to a specified recipient, to support the activities of the recipient and permit the community to benefit from those activities.

"Recipient" means any organization or person receiving a grant.

STATE DEPARTMENT OR AGENCY RELATED TO THIS REQUEST (LEAVE BLANK IF UNKNOWN): DEPARTMENT OF HEALTH

STATE PROGRAM I.D. NO. (LEAVE BLANK IF UNKNOWN): \_\_\_\_\_

I. APPLICANT INFORMATION:

Legal Name of Requesting Organization or Individual:

St. Francis Healthcare Foundation of Hawaii

Dbas: Not Applicable

Street Address: 2228 Liliha Street, Suite 205 Honolulu, HI 96817

Mailing Address: Same as Above

2. CONTACT PERSON FOR MATTERS INVOLVING THIS APPLICATION:

Name LESLIE LAM

Title Vice President

Phone # 808-547-8088

Fax # 808-547-8034

E-mail LLam@stfrancishawaii.org

3. TYPE OF BUSINESS ENTITY:

- NON PROFIT CORPORATION INCORPORATED IN HAWAII
- FOR PROFIT CORPORATION INCORPORATED IN HAWAII
- LIMITED LIABILITY COMPANY
- SOLE PROPRIETORSHIP/INDIVIDUAL
- OTHER

6. DESCRIPTIVE TITLE OF APPLICANT'S REQUEST:

SUPPORTING FIRST YEAR OPERATIONS OF ST. FRANCIS KUPUNA VILLAGE  
QUALITY OF LIFE CENTER

4. FEDERAL TAX ID #: [REDACTED]

5. STATE TAX ID #: [REDACTED]

7. AMOUNT OF STATE FUNDS REQUESTED:

FISCAL YEAR 2019: \$750,000

8. STATUS OF SERVICE DESCRIBED IN THIS REQUEST:

- NEW SERVICE (PRESENTLY DOES NOT EXIST)
- EXISTING SERVICE (PRESENTLY IN OPERATION)

SPECIFY THE AMOUNT BY SOURCES OF FUNDS AVAILABLE  
AT THE TIME OF THIS REQUEST:

STATE \$ 0

FEDERAL \$ 0

COUNTY \$78,032

PRIVATE/OTHER \$ 0

TYPE NAME OF INITIATIVE:

[REDACTED]

JERRY CORREA, PRESIDENT  
NAME & TITLE

JANUARY 18, 2018  
DATE SIGNED

JAN 19 2018  
ROAM

## Application for Grants

*Please check the box when item/section has been completed. If any item is not applicable to the request, the applicant should enter "not applicable".*

### **I. Background and Summary**

This section shall clearly and concisely summarize and highlight the contents of the request in such a way as to provide the State Legislature with a broad understanding of the request. Please include the following:

1.  A brief description of the applicant's background;

St. Francis Healthcare System of Hawaii (St. Francis) has and continues to be at the forefront of preparing to meet the needs of Hawaii's growing elder population. St. Francis is sponsored by the Sisters of St. Francis of the Neumann Communities of Syracuse, New York. Since their arrival 130 years ago, the Sisters have remained committed to following the example of Christ's healing ministry and the teachings of St. Francis of Assisi, caring for all with kindness, respect, and concern. Since 1883, the Sisters of St. Francis and their staff have been reaching out to those at the margins of society, including the sick, homeless, and abandoned, hoping to bring peace, comfort, and friendship to those who need it.

The Sisters of St. Francis have administered several hospitals including Malulani Hospital (now Maui Memorial Medical Center) and Hilo Hospital (now Hilo Medical Center) and are most known for founding St. Francis Hospital in 1927 to care for the poor and needy. In addition, they have led the health care industry with the introduction of numerous health care services that include: home health services on Oahu (1962) and on Kauai (1977); renal dialysis (1965); kidney transplants (1969); cancer rehabilitation (1973); hospice care (1978); heart transplants (1987); a bone marrow donor registry (1989); intergenerational adult day care (1996); outpatient palliative care (2008); and telehealth monitoring on Kauai (2008) and on Oahu (2009). The Sisters' continuum of care model achieves excellent health outcomes for those who entrust their care to them.

St. Francis continues to be a recognized leader in home- and community-based care, a sector of the healthcare continuum that has emerged as the single most important area of growth to meet the needs of older adults. In 1984, St. Francis Healthcare Foundation of Hawaii was established as an entity of St. Francis responsible for coordinating all fund development efforts.

2.  The goals and objectives related to the request;

To keep pace with Hawaii's aging population and enable our kupuna to age in place independently as long as possible, St. Francis is establishing the Quality of Life Center at

its Liliha campus to complement the recently completed 119-bed Skilled Nursing Facility. Part of Kupuna Village, the Quality of Life Center will offer a range of health and wellness programs designed to encourage senior adults to become active partners in living healthier, independent lives.

By co-locating services at its Liliha campus within the convenience of a bus line, seniors will have access to physicians or outpatient ancillary services, such as x-rays or lab tests, in conjunction with scheduled wellness activities all within a centralized location. Not only will the Quality of Life Center address the need for programs leading to healthy aging in place, it will provide access to nonmedical services for older adults in conjunction with medical care, including fall prevention, nutrition education, exercise, and caregiver support and training.

An award from State Grant-in-Aid will provide first year start-up costs so that programs will be fully operational in tandem with completion of the Quality of Life Center in December 2018.

3.  The public purpose and need to be served;

As Hawaii's population continues to age and our kupuna experience longer life spans due to medical advances, seniors will need programs that encourage healthy and active lifestyles that support aging in place.

According to a 2012 report from the Hawaii State Department of Business, Economic Development & Tourism, approximately 17% of the state's population is 65 years or older, but by 2030 will represent 23% of Hawaii's population. This aging segment of the population will continue to dominate the healthcare industry to an unprecedented extent. According to HMSA's Health Trends in Hawaii, 1 in 5 people will be 65 years or older by 2030, compared with 1 in 17 in 1970, representing an unparalleled shift in demographics. In 2011, the first wave of approximately 80 million baby boomers born between 1946 and 1965 turned age 65. As the baby boomer generation reaches retirement age, the population of seniors aged 85 and over will rise rapidly between 2030 and 2050.

Unfortunately, older adults are not engaging in the type of active lifestyles that lead to health and wellness. The Surgeon General's Report on Older Adults contends that one-third of men, and one-half of women engage in no physical activity by the age of 75, even though loss of strength and stamina is partially attributed to a decrease in physical activity.

The Surgeon General maintains that physical activity significantly impacts the health of older adults by helping maintain their ability to live independently, while reducing their risk of falling or fracturing bones. Regular exercise reduces the risk of death from coronary heart disease, and leads to a decreased incidence of high blood pressure, colon cancer, and diabetes. Physical activity also results in reduced blood pressure among older adults suffering from hypertension, an improvement in stamina and muscle strength for

seniors with chronic, disabling conditions, controlled joint swelling and pain from arthritis, and healthy maintenance of bones, muscles and joints.

Representing a shift in our focus to senior services, St. Francis Healthcare System is establishing the Kupuna Village Quality of Life Center, a one-stop health and wellness center that provides a continuum of services to meet the needs of Hawaii's growing senior population and their caregivers. According to the Surgeon General, older adults need aerobic activities, as well as muscle-strengthening exercises, regardless of whether they were previously active or led sedentary lifestyles. Community-based programs, such as those being offered at the Quality of Life Center, will meet this need for aerobic, strengthening, and flexibility activities, specifically designed for Hawaii's seniors.

4.  Describe the target population to be served; and

The Quality of Life Center will directly benefit seniors, predominantly ages 62 and older and their caregivers at or below median income level for Honolulu County. The initial target population will be seniors residing in the Liliha area, however will serve contiguous communities on Oahu. Liliha is a community where nearly 1 in 3 residents is age 60 and above and 48% of households includes at least one family member ages 65 years and over. According to the U.S. Census Bureau, over 75% of all households in Liliha and surrounding communities are living below the median household income level for Honolulu County. Approximately 40% are living on fixed incomes. In addition, nearly 1 in 4 households are receiving cash public assistance and/or Food Stamps/Supplemental Nutrition Assistance Program (SNAP) benefits.

5.  Describe the geographic coverage.

The Quality of Life Center will serve seniors residing in the Liliha area, however, transportation services will provide pick up and drop off services targeted to low income senior housing facilities such as Manoa Gardens, Kulana Hale and Wisteria Vistas to enable a greater number of seniors from Oahu's urban core to be able to participate in our programs.

## **II. Service Summary and Outcomes**

The Service Summary shall include a detailed discussion of the applicant's approach to the request. The applicant shall clearly and concisely specify the results, outcomes, and measures of effectiveness from this request. The applicant shall:

1.  Describe the scope of work, tasks and responsibilities;

**Manager of Volunteers and Caregiver Training** – • Will be responsible for the implementation, coordination and evaluation of the volunteer service program and volunteer activities in all departments. • For the Caregiver Training Program – will implement, coordinate and evaluate the caregiver classes including recruiting, vetting and

coordinating trainers and handling of all activities/functions related to the training classes. Will source and partner with community, social and governmental organizations for both programs.

**Director, Quality of Life Programs** – • Will be responsible for planning, development, implementation, administration and direction of quality of life programs, which are holistic in nature and address mind, body and spirit. • Will coordinate and ensure activities and daily operations of the program run smoothly.

**Social Worker** – • Reporting to the Director, Quality of Life, will meet with patients and families to assess service needs and define desired outcomes, assist with obtaining appropriate related services, and follow-up with patients and families to see that needs are met. • Will facilitate formal and informal meetings regarding patient and family communication and decision making, as well as participate in the development and review of appropriate protocols and processes that support appropriate referral and consistent care. • Will participate in developing and implementing appropriate measures of patient care quality and satisfaction.

**Program Support** – • Will be responsible for providing administrative assistance and secretarial support for the St. Francis Healthcare System Quality of Life Center. • Will perform a variety of tasks to support the goals, services and functions, including, but not limited to secretarial/clerical services, project coordination, and administrative and office support activities for multiple managers. • Duties may include fielding telephone calls, receiving and directing visitors, word processing, writing letters and other communications, coordinating meetings and related activities, taking minutes, creating spreadsheets and presentations, and filing.

2.  Provide a projected annual timeline for accomplishing the results or outcomes of the service;

If State GIA funds are awarded, St. Francis would be ready to draw down funds to operate programs in tandem with completion of the Kupuna Village Quality of Life Center within 1-3 months from the notice to proceed.

3.  Describe its quality assurance and evaluation plans for the request. Specify how the applicant plans to monitor, evaluate, and improve their results; and

St. Francis will evaluate critical patient safety and overall quality issues, including staff competency, medication management, infection control, and patient education as part of licensure through the Department of Human Services (DHS) and The Joint Commission. This onsite evaluation is a collaborative learning process in which experienced surveyors share best practices and insights to help address challenging issues and identify risks as well as high-performing areas.

Ongoing quality is evaluated through periodic post-surveys from The Joint Commission and DHS. In addition, St. Francis annually reviews its Strategic Plan to determine progress toward pre-established goals, evaluates satisfaction of leadership key performance indicators, collects data from Employee Engagement Surveys, and engages in comparative analysis between its operating budget and actual revenues and expenses each year.

4.  List the measure(s) of effectiveness that will be reported to the State agency through which grant funds are appropriated (the expending agency). The measure(s) will provide a standard and objective way for the State to assess the program's achievement or accomplishment. Please note that if the level of appropriation differs from the amount included in this application that the measure(s) of effectiveness will need to be updated and transmitted to the expending agency.

St. Francis will submit quarterly reports to the State encompassing signed employment contracts, payment stubs, and demographics on the number of seniors served through programs at Kupuna Village Quality of Life Center.

### **III. Financial**

#### **Budget**

1.  The applicant shall submit a budget utilizing the enclosed budget forms as applicable, to detail the cost of the request.
  - a. Budget request by source of funds ([Link](#))
  - b. Personnel salaries and wages ([Link](#))
  - c. Equipment and motor vehicles ([Link](#))
  - d. Capital project details ([Link](#))
  - e. Government contracts, grants, and grants in aid ([Link](#))

See attached forms.

2.  The applicant shall provide its anticipated quarterly funding requests for the fiscal year 2019.

Quarter 1	Quarter 2	Quarter 3	Quarter 4	Total Grant
\$187,500	\$187,500	\$187,500	\$187,500	\$750,000

3.  The applicant shall provide a listing of all other sources of funding that they are seeking for fiscal year 2019.

St. Francis is requesting first year operational funding through State Grant-in-Aid for Kupuna Village Quality of Life Center. Additional funds will be raised in early 2018 from private philanthropic sources to complete funding.

4.  The applicant shall provide a listing of all state and federal tax credits it has been granted within the prior three years. Additionally, the applicant shall provide a listing of all state and federal tax credits they have applied for or anticipate applying for pertaining to any capital project, if applicable.

This does not apply.

5.  The applicant shall provide a listing of all federal, state, and county government contracts, grants, and grants in aid it has been granted within the prior three years and will be receiving for fiscal year 2019 for program funding.

Source	Period	Amount	Purpose
City GIA	10/1/17 – 9/30/18	\$78,032	Fitness Equipment and Furnishings

6.  The applicant shall provide the balance of its unrestricted current assets as of December 31, 2017.

The balance of St. Francis Healthcare Foundation of Hawaii's unrestricted current assets as of December 31, 2017 is \$6,273,060.

#### **IV. Experience and Capability**

1.  **Necessary Skills and Experience**

The applicant shall demonstrate that it has the necessary skills, abilities, knowledge of, and experience relating to the request. State your experience and appropriateness for providing the service proposed in this application. The applicant shall also provide a listing of verifiable experience of related projects or contracts for the most recent three years that are pertinent to the request.

Following the legacy of Saint Marianne Cope, the Sisters of St. Francis have been dedicated to meeting the health needs of Hawaii's people for more than 130 years. The sisters are known for pioneering new services in Hawaii, and have focused recent efforts on meeting the needs of Hawaii's aging senior population.

As part of an extensive 20-year strategic plan, St. Francis Healthcare System divested its two acute hospitals in January 2007, specifically to focus on home- and community-based care primarily for older adults.

The hospital assets at the East and West campuses were returned to St. Francis five years later after Hawaii Medical Center filed for bankruptcy twice and subsequently closed. With the sale of the West hospital campus to The Queen's Health Systems in December 2012, St. Francis Healthcare System has launched a new, exciting chapter at its Liliha campus.

St. Francis has been the recipient of federal funds for two projects. In 2013, St. Francis completed construction of an \$8 million, 15,000-square-foot, single level intergenerational center in Ewa Villages to address the needs for services for both the elderly and preschool populations living in West Oahu. Opened in February 2013, the St. Francis Intergenerational Center enables families in the sandwich generation to drop off their aging parents who need assistance during the day and their young children in one convenient location.

St. Francis also has the experience of overseeing the management and operations of a vibrant, affordable senior independent living community. Franciscan Vistas Ewa, a 149-unit complex that is 100 percent leased, features amenities typically found only in luxury living centers. St. Francis will leverage its experience from these two facilities in Ewa Villages to build on this success at the Liliha campus.

St. Francis has already celebrated completion of its 119-bed skilled nursing facility to provide quality rehabilitative care to older adults until they are ready to return home. With the opening of the Quality of Life Center, St. Francis is able to offer a range of wellness and fitness activities designed to keep seniors healthy and fit.

2.  **Facilities**

The applicant shall provide a description of its facilities and demonstrate its adequacy in relation to the request. If facilities are not presently available, describe plans to secure facilities.

St. Francis recently opened a 50,000 sf 119-bed skilled nursing facility by upgrading three floors of the 40-year-old Sullivan Building and bringing it to code. Seventy percent of the rooms in the skilled nursing facility are private, many which offer panoramic views of the Honolulu skyline and serene views of Nuuanu Valley.

Each floor is designed to create a vibrant healing environment that encourages interaction, activity, and connection with the community. In addition, St. Francis modernized and renovated its 40-year-old commercial kitchen, which is housed in another former existing building on the St. Francis Liliha campus, with the dining area adjacent to the kitchen.

St. Francis is currently completing renovations to a portion of the Liliha campus to establish Kupuna Village, a one-stop health and wellness center that complements the Skilled Nursing Facility and provides a continuum of services to meet the needs of Hawaii's growing senior population and their caregivers.

**V. Personnel: Project Organization and Staffing**

1.  **Proposed Staffing, Staff Qualifications, Supervision and Training**



The applicant shall describe the proposed staffing pattern and proposed service capacity appropriate for the viability of the request. The applicant shall provide the qualifications and experience of personnel for the request and shall describe its ability to supervise, train and provide administrative direction relative to the request.

St. Francis Healthcare System's qualified staff have extensive experience in implementing, managing, and bringing similar, major capital projects from conception to completion.

St. Francis Healthcare Foundation of Hawaii is led by *President Jerry Correa*, who provides oversight of day-to-day operations covering a broad range of programs and services. Correa also leads the proposed transformation of the Liliha campus into St. Francis Kupuna Village, a one-stop health and wellness center for seniors and caregivers which includes the recently opened skilled nursing facility and Quality of Life Center. Prior to being named President, Correa served as Chief Operating Officer from 2007 through 2012, where he oversaw operational and financial performance of the different health services and programs.

*Lauri Rasmussen* oversees asset management and construction of Kupuna Village to ensure that all projects are completed on time and according to specifications. Most recently, Lauri oversaw the successful completion of the 119-bed skilled nursing facility, which was opened in 2015 on time and within budget. As Vice President of Operations, Lauri is responsible for the administrative functions that include information technology and communications, facilities and grounds maintenance, risk management, and safety for the organization.

*Leslie Lam* serves as Vice President of St. Francis Healthcare Foundation of Hawaii, where she is responsible for managing investments, as well as coordinating all fundraising efforts of St. Francis Healthcare System, its entities and programs. Prior to joining the Foundation in 2016, Leslie was Executive Director of American Diabetes Association, where she was instrumental in increasing fundraising net revenues by 14% through a donor cultivation plan that resulted in the establishment of multiple funding streams.

2.  **Organization Chart**

The applicant shall illustrate the position of each staff and line of responsibility/supervision. If the request is part of a large, multi-purpose organization, include an organization chart that illustrates the placement of this request.

See attached Organization Chart.

3.  **Compensation**

The applicant shall provide the annual salaries paid by the applicant to the three highest paid officers, directors, or employees of the organization by position.

St. Francis Healthcare Foundation's top officers and Board of Directors are volunteers and are not compensated.

Foundation Chairman – non-paid volunteer Bradford Harrison  
Foundation Board Secretary – non-paid volunteer Arnold Wong  
Foundation Member at Large – non-paid volunteer Larry Fujino

## **VI. Other**

### **1. Litigation**

The applicant shall disclose any pending litigation to which they are a party, including the disclosure of any outstanding judgement. If applicable, please explain.

This does not apply.

### **2. Licensure or Accreditation**

The applicant shall specify any special qualifications, including but not limited to licensure or accreditation that the applicant possesses relevant to this request.

St. Francis maintains licensure through the DHS and The Joint Commission, both of which require providers to commit to continuous improvement of services in collaboration with stakeholders and with ongoing monitoring of results.

St. Francis Hospice also recently earned a Gold Seal of Approval, receiving accreditation for another three years from The Joint Commission, an independent, not-for-profit organization that accredits and certifies nearly 21,000 health care organization and programs in the United States. St. Francis Hospice has been accredited since 1991 and is the first hospice program in Hawaii to be accredited.

St. Francis Hospice, its preschool and adult day care at St. Francis Intergenerational Center in Ewa Villages, and Franciscan Adult Day Center in Manoa are licensed by the Hawaii Department of Human Services. St. Francis Healthcare System's adult day care programs were recently voted the best adult day care programs in the state by Honolulu Star-Advertiser readers. Over 500,000 Star-Advertiser readers voted for their favorite local businesses in a multitude of categories and the results were announced on June 18, 2017.

### **3. Private Educational Institutions**

The applicant shall specify whether the grant will be used to support or benefit a sectarian or non-sectarian private educational institution. Please see [Article X, Section 1, of the State Constitution](#) for the relevance of this question.

This does not apply.

4.  **Future Sustainability Plan**

The applicant shall provide a plan for sustaining after fiscal year 2018-19 the activity funded by the grant if the grant of this application is:

- (a) Received by the applicant for fiscal year 2018-19, but
- (b) Not received by the applicant thereafter.

A grant from State Grant-in-Aid for first year start-up funding would enable St. Francis to operate its programs in tandem with completion of the Quality of Life Center in December 2018.

Additional funds will be raised in early 2018 from private philanthropic sources to complete funding for the first year. Fees-for-service, annual fund raising efforts, and the generous donations of individuals and friends of St. Francis will ensure the sustainability of the programs and services at the Quality of Life Center beyond the first year of operations.

As with all our properties, St. Francis has an ongoing maintenance plan to ensure that facilities and vehicles are well maintained in the future, further eliminating the need for funding beyond the grant period. In addition, annual fund raising efforts, volunteer assistance, and the generous donations of individuals and friends of St. Francis will ensure the longevity of programs and services at the Quality of Life Center.

5.  **Certificate of Good Standing (If the Applicant is an Organization)**

If the applicant is an organization, the applicant shall submit one (1) copy of a certificate of good standing from the Director of Commerce and Consumer Affairs that is dated no earlier than December 1, 2017.

See attached Certificate of Good Standing.

6.  **Declaration Statement**

The applicant shall submit a declaration statement affirming its compliance with Section 42F-103, Hawaii Revised Statutes. ([Link](#))

See attached Declaration Statement.

7.  **Public Purpose**

The applicant shall specify whether the grant will be used for a public purpose pursuant to Section 42F-102, Hawaii Revised Statutes. ([Link](#))

If awarded funding, State Grant-in-Aid funds would be used for a public purpose to meet the health and wellness needs of Hawaii's growing elder population and their caregivers as described in the above *Section I. Background and Summary – 3. Public purpose and need to be served.*

## BUDGET REQUEST BY SOURCE OF FUNDS

Period: July 1, 2018 to June 30, 2019

Applicant: St. Francis Healthcare Foundation

BUDGET CATEGORIES	Total State Funds Requested (a)	Total Federal Funds Requested (b)	Total County Funds Committed (c)	Total Private/Other Funds Requested (d)
<b>A. PERSONNEL COST</b>				
1. Salaries	\$373,000	\$0	\$0	\$0
2. Payroll Taxes & Assessments	\$0	\$0	\$0	\$0
3. Fringe Benefits	\$104,440	\$0	\$0	\$0
<b>TOTAL PERSONNEL COST</b>	<b>\$477,440</b>	<b>\$0</b>	<b>\$0</b>	
<b>B. OTHER CURRENT EXPENSES</b>				
1. Airfare, Inter-Island	\$0	\$0	\$0	\$0
2. Insurance	\$50,000	\$0	\$0	\$0
3. Lease/Rental of Equipment	\$0	\$0	\$0	\$0
4. Lease/Rental of Space	\$0	\$0	\$0	\$0
5. Staff Training	\$97,625	\$0	\$0	\$0
6. Caregiver Training Materials	\$5,000	\$0	\$0	\$0
7. Telecommunication	\$0	\$0	\$0	\$0
8. Utilities	\$77,935	\$0	\$0	\$42,065
9. Janitorial Services	\$42,000	\$0	\$0	\$0
10				
11				
12				
13				
14				
15				
16				
17				
18				
19				
20				
<b>TOTAL OTHER CURRENT EXPENSES</b>	<b>\$272,560</b>	<b>\$0</b>	<b>\$0</b>	<b>\$42,065</b>
<b>C. EQUIPMENT PURCHASES</b>	<b>\$0</b>	<b>\$0</b>	<b>\$78,032</b>	<b>\$0</b>
<b>D. MOTOR VEHICLE PURCHASES</b>	<b>\$0</b>	<b>\$0</b>	<b>\$0</b>	<b>\$0</b>
<b>E. CAPITAL</b>	<b>\$0</b>	<b>\$0</b>	<b>\$0</b>	<b>\$0</b>
<b>TOTAL (A+B+C+D+E)</b>	<b>\$750,000</b>	<b>\$0</b>	<b>\$78,032</b>	<b>\$42,065</b>
<b>SOURCES OF FUNDING</b>		Budget Prepared By:		
(a) Total State Funds Requested	\$750,000	Leslie Lam, Vice President		808-547-8088
(b) Total Federal Funds Requested	\$0	Name <span style="background-color: black; color: black;">[REDACTED]</span>		Phone
(c) Total County Funds Committed	\$78,032			January 18, 2018
(d) Total Private/Other Funds Requested	\$42,065	Signature of Authorized Official		Date
<b>TOTAL BUDGET</b>	<b>\$870,097</b>	Jerry Correa, President Name and Title (Please type or print)		

## BUDGET JUSTIFICATION - PERSONNEL SALARIES AND WAGES

Period: July 1, 2018 to June 30, 2019

Applicant: St. Francis Healthcare Foundation

POSITION TITLE	FULL TIME EQUIVALENT	ANNUAL SALARY A	% OF TIME ALLOCATED TO GRANT REQUEST B	TOTAL STATE FUNDS REQUESTED (A x B)
Quality of Life Center Director	1 FTE	\$72,500.00	100.00%	\$ 72,500.00
Quality of Life Center Manager of Caregivers	1 FTE	\$72,500.00	100.00%	\$ 72,500.00
Social Worker	1 FTE	\$72,000.00	100.00%	\$ 72,000.00
Social Worker	1 FTE	\$72,000.00	100.00%	\$ 72,000.00
Program Support Staff	1 FTE	\$42,000.00	100.00%	\$ 42,000.00
Program Support Staff	1 FTE	\$42,000.00	100.00%	\$ 42,000.00
				\$ -
				\$ -
				\$ -
				\$ -
				\$ -
				\$ -
				\$ -
				\$ -
				\$ -
<b>TOTAL:</b>				<b>373,000.00</b>
<b>JUSTIFICATION/COMMENTS: State GIA would be used to support first year operating costs, including salaries and wages of staff required to operate programs at QLC.</b>				

## BUDGET JUSTIFICATION - EQUIPMENT AND MOTOR VEHICLES

Period: July 1, 2018 to June 30, 2019

Applicant: St. Francis Healthcare Foundation

DESCRIPTION EQUIPMENT	NO. OF ITEMS	COST PER ITEM	TOTAL COST	TOTAL BUDGETED
Not Applicable			\$ -	
			\$ -	
			\$ -	
			\$ -	
			\$ -	
<b>TOTAL:</b>				

JUSTIFICATION/COMMENTS:

DESCRIPTION OF MOTOR VEHICLE	NO. OF VEHICLES	COST PER VEHICLE	TOTAL COST	TOTAL BUDGETED
Not Applicable			\$ -	
			\$ -	
			\$ -	
			\$ -	
			\$ -	
<b>TOTAL:</b>				

JUSTIFICATION/COMMENTS:

## BUDGET JUSTIFICATION - CAPITAL PROJECT DETAILS - Not Applicable

Period: July 1, 2018 to June 30, 2019

Applicant: St. Francis Healthcare Foundation

FUNDING AMOUNT REQUESTED						
TOTAL PROJECT COST	ALL SOURCES OF FUNDS RECEIVED IN PRIOR YEARS		STATE FUNDS REQUESTED	OF FUNDS REQUESTED	FUNDING REQUIRED IN SUCCEEDING YEARS	
	FY: 2016-2017	FY: 2017-2018	FY:2018-2019	FY:2018-2019	FY:2019-2020	FY:2020-2021
PLANS						
LAND ACQUISITION						
DESIGN						
CONSTRUCTION						
EQUIPMENT						
<b>TOTAL:</b>						
<b>JUSTIFICATION/COMMENTS:</b>						



**GOVERNMENT CONTRACTS, GRANTS, AND / OR GRANTS IN AID**

Applicant: St. Francis Healthcare Foundation

Contracts Total: \$78,032

	<b>CONTRACT DESCRIPTION</b>	<b>EFFECTIVE DATES</b>	<b>AGENCY</b>	<b>GOVERNMENT ENTITY (U.S. / State / Haw / Hon / Kau / Mau)</b>	<b>CONTRACT VALUE</b>
1	City Grant-in-Aid	10/1/17 - 9/30/18	Department of Community Services	City and County of Honolulu	\$78,032
2					
3					
4					
5					
6					
7					
8					
9					
10					
11					
12					
13					
14					
15					
16					
17					
18					
19					
20					
21					
22					
23					
24					
25					
26					

**DECLARATION STATEMENT OF  
APPLICANTS FOR GRANTS PURSUANT TO  
CHAPTER 42F, HAWAI'I REVISED STATUTES**

The undersigned authorized representative of the applicant certifies the following:

- 1) The applicant meets and will comply with all of the following standards for the award of grants pursuant to Section 42F-103, Hawai'i Revised Statutes:
  - a) Is licensed or accredited, in accordance with federal, state, or county statutes, rules, or ordinances, to conduct the activities or provide the services for which a grant is awarded;
  - b) Complies with all applicable federal and state laws prohibiting discrimination against any person on the basis of race, color, national origin, religion, creed, sex, age, sexual orientation, or disability;
  - c) Agrees not to use state funds for entertainment or lobbying activities; and
  - d) Allows the state agency to which funds for the grant were appropriated for expenditure, legislative committees and their staff, and the auditor full access to their records, reports, files, and other related documents and information for purposes of monitoring, measuring the effectiveness, and ensuring the proper expenditure of the grant.
- 2) If the applicant is an organization, the applicant meets the following requirements pursuant to Section 42F-103, Hawai'i Revised Statutes:
  - a) Is incorporated under the laws of the State; and
  - b) Has bylaws or policies that describe the manner in which the activities or services for which a grant is awarded shall be conducted or provided.
- 3) If the applicant is a non-profit organization, it meets the following requirements pursuant to Section 42F-103, Hawai'i Revised Statutes:
  - a) Is determined and designated to be a non-profit organization by the Internal Revenue Service; and
  - b) Has a governing board whose members have no material conflict of interest and serve without compensation.

Pursuant to Section 42F-103, Hawai'i Revised Statutes, for grants used for the acquisition of land, when the organization discontinues the activities or services on the land acquired for which the grant was awarded and disposes of the land in fee simple or by lease, the organization shall negotiate with the expending agency for a lump sum or installment repayment to the State of the amount of the grant used for the acquisition of the land.

Further, the undersigned authorized representative certifies that this statement is true and correct to the best of the applicant's knowledge.

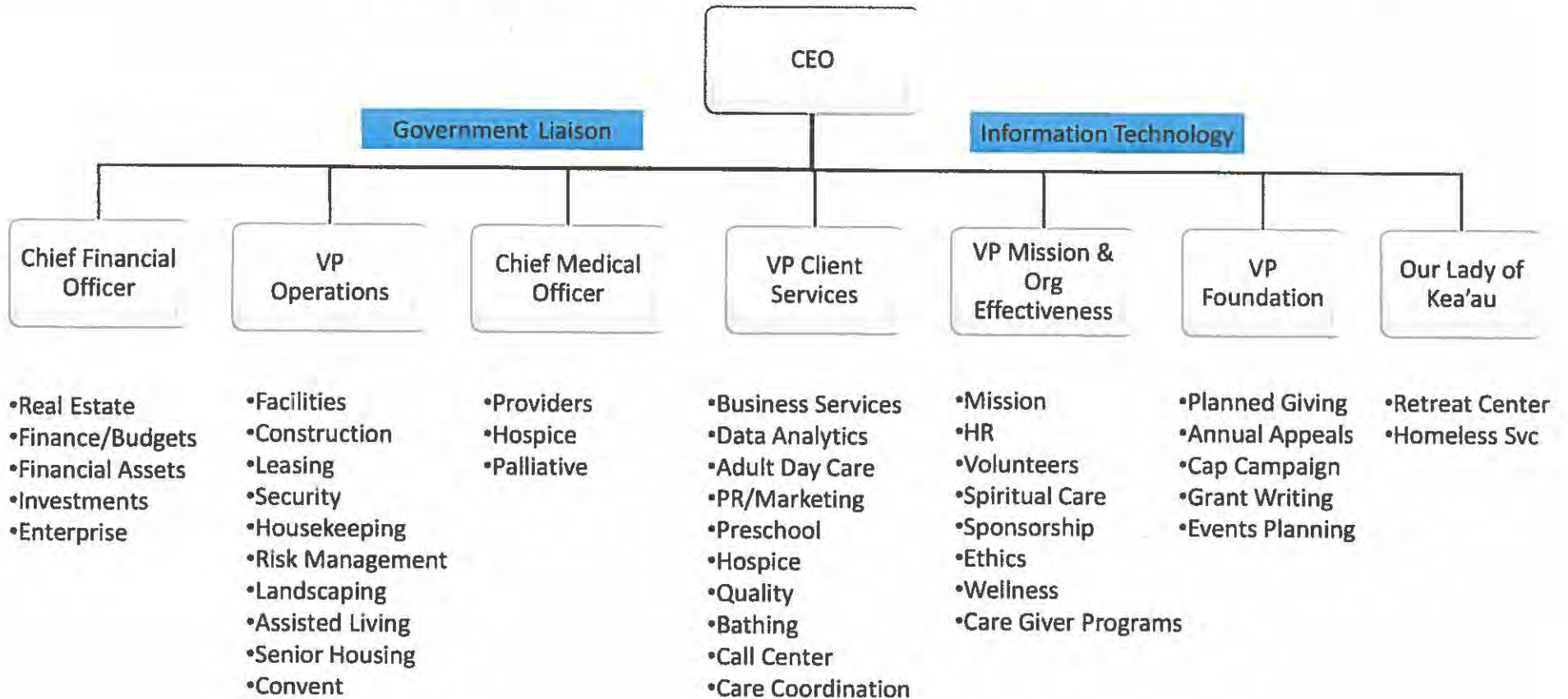
St. Francis Healthcare Foundation of Hawaii

\_\_\_\_\_  
January 18, 2018  
(Signature) (Date)

Jerry Correa  
\_\_\_\_\_  
(Typed Name) (Title)  
President

# Organizational Structure

April 10, 2017





## Department of Commerce and Consumer Affairs

### CERTIFICATE OF GOOD STANDING

I, the undersigned Director of Commerce and Consumer Affairs of the State of Hawaii, do hereby certify that

**ST. FRANCIS HEALTHCARE FOUNDATION OF HAWAII**

was incorporated under the laws of Hawaii on 12/07/1984 ; that it is an existing nonprofit corporation; and that, as far as the records of this Department reveal, has complied with all of the provisions of the Hawaii Nonprofit Corporations Act, regulating domestic nonprofit corporations.



IN WITNESS WHEREOF, I have hereunto set my hand and affixed the seal of the Department of Commerce and Consumer Affairs, at Honolulu, Hawaii.

Dated: January 12, 2018

Director of Commerce and Consumer Affairs