

House District(s) \_\_\_\_\_  
Senate District(s) \_\_\_\_\_

THE TWENTY-NINTH LEGISLATURE  
APPLICATION FOR GRANTS  
CHAPTER 42F, HAWAII REVISED STATUTES

Log No: \_\_\_\_\_

For Legislature's Use Only

Type of Grant Request:

GRANT REQUEST - OPERATING

GRANT REQUEST - CAPITAL

"Grant" means an award of state funds by the legislature, by an appropriation to a specified recipient, to support the activities of the recipient and permit the community to benefit from those activities.

"Recipient" means any organization or person receiving a grant.

STATE DEPARTMENT OR AGENCY RELATED TO THIS REQUEST (LEAVE BLANK IF UNKNOWN): \_\_\_\_\_

STATE PROGRAM I.D. NO. (LEAVE BLANK IF UNKNOWN): \_\_\_\_\_

1. APPLICANT INFORMATION:

Legal Name of Requesting Organization or Individual:  
Searider Productions Foundation

Dba: N/A

Street Address:  
84-370 Makaha Valley Road  
Waianae, Hawaii 96792

Mailing Address:

2. CONTACT PERSON FOR MATTERS INVOLVING THIS APPLICATION:

Name L. CANDY SUIISO

Title Executive Director

Phone # 808 255-2877

Fax # 808 697-7018

E-mail candysuiso@seariderproductions.com

3. TYPE OF BUSINESS ENTITY:

- NON PROFIT CORPORATION INCORPORATED IN HAWAII  
 FOR PROFIT CORPORATION INCORPORATED IN HAWAII  
 LIMITED LIABILITY COMPANY  
 SOLE PROPRIETORSHIP/INDIVIDUAL  
 OTHER

6. DESCRIPTIVE TITLE OF APPLICANT'S REQUEST:

TO SECURE FUNDING FOR PROGRAM STAFF, INSTRUCTORS COST, BUS TRANSPORTATION, TEACHER STIPENDS, TEXTBOOKS, SUPPLIES AND EQUIPMENT AND INSTRUCTIONAL MATERIALS

4. FEDERAL TAX ID #: [REDACTED]

5. STATE TAX ID #: [REDACTED]

7. AMOUNT OF STATE FUNDS REQUESTED:

FISCAL YEAR 2019: \$330,000

8. STATUS OF SERVICE DESCRIBED IN THIS REQUEST:

- NEW SERVICE (PRESENTLY DOES NOT EXIST)  
 EXISTING SERVICE (PRESENTLY IN OPERATION)

SPECIFY THE AMOUNT BY SOURCES OF FUNDS AVAILABLE AT THE TIME OF THIS REQUEST:

STATE \$ 0

FEDERAL \$ 0

COUNTY \$ 0

PRIVATE/OTHER \$ 0

L. CANDY SUIISO - EXECUTIVE DIRECTOR

NAME & TITLE

1/18/18  
DATE SIGNED

JAN 19 2018 9:47 AM

**Searider Productions Foundation**  
The Twenty-Ninth Legislature  
State Grant in Aid Application

The Searider Productions Foundation respectfully requests a second-year of funding in the amount of \$330,000 to support the Nanakuli-Waianae Complex Area Secondary Schools in the operations and expansion of a College and Career to Employment Pathway that focuses on three components for the Hospitality and Travel Industry: 1. Human Resource Development (future employees); 2. Service Development (Marketing products such as PSAs, flyers, banners,) and 3. Products and Supplies (Ogo product development). This pathway will include Chinese cultural and language awareness, job shadowing, skills development for tourism, creative media, and mariculture to prepare students for future job developments within the hospitality and tourism industry in the Ko Olina Resort Area.

**I. Background and Summary**

**1. Applicant's Background**

The Searider Productions Foundation (SPF) is a Hawaii non-profit 501(c)(3) corporation whose mission is to provide the Waianae Community on the Leeward Coast, especially it's youth, with the educational support, job training, and workforce development opportunities for success as citizens of local and global communities.

SPF strives to ensure that our leaders of tomorrow will honor and carry the values and traditions of our community forward as college graduates and career-ready citizens.

**2. Statement of Need Including Target Population and Geographic Coverage**

The Waianae Coast Community is made up of nine schools: Nanakuli High and Intermediate (grades 7-12), Nanakuli Elementary, and Nanaikapono Elementary, Waianae High, Waianae Intermediate, Waianae Elementary, Maili Elementary, Makaha Elementary, and Leihoku Elementary.

It covers the geographical area from Nanakuli to Makaha and for the purpose of this proposal the target population will be the secondary schools (grades 7-12). The current secondary student population of the complex area is approximately 3,750 students with 1,250 in grades 7-8 and 2,500 in grades 9-12.

The Nanakuli-Waianae Complex Area is characterized by high unemployment and low academic achievement. The median household income is \$55,000 and per capita income is \$16,333, compared to the state average of \$67,492 and 29,227, respectively. There are about 62% of our families who live below the federal poverty guidelines and due to this, we are the only Complex Area in the state where all nine of our schools qualified for the Federal Community Eligibility Provision Program which provides free transportation, breakfast, and lunch to all of our students.

The coast is plagued with homelessness, poverty, and startlingly low academic achievement. Leeward Coast families struggle with meager wages and comparatively high living costs, high unemployment, poor health indicators, low achieving schools, and a host of socio-economic challenges. Thus, a depressed economy and fewer job opportunities in the Leeward area have continued this vicious cycle of poverty which ultimately impacts educational attainment and hope for a successful future and the development of a thriving economically sustained community.

As the development of hotels in the Ko Olina Resort area by Chinese is projected in 2019, the clientele may largely be from Chinese speaking countries. For our students and adults in the Leeward Coast, the challenge is not just finding work, but they lack the skills and experiences for jobs in and related to the hospitality industry. Therefore, the need exists for the hospitality industry to have skilled workers who can provide high quality service to the hotel guests, provide marketing services to inform and attract visitors to Ko Olina Resorts, and to provide mariculture products (ogo) for use in the restaurants and other areas.

We have the potential workforce in our schools and community and this current undertaking aims to prepare our students through a scaffold curriculum from grades 7 through 12 and for our adults through a partnership with the UH college system, After School All Stars (ASAS) and the Ko Olina Resort hotels.

### **3. Goal and Objectives of the Nanakuli-Waianae Complex Area Project**

The goal is to provide our students and adults with the educational support, job training, and workforce development opportunities for success as citizens of local and global communities. This grant will operationalize and expand a College and Career to Employment Pathway for Hospitality and Travel Industry by focusing on three components: 1. Human Resource Development; 2. Services Development and 3. Products and Goods.

The objectives to meet our goal are:

1. Establish a Human Resource Development Pathway for Hospitality and Tourism.
  - a. Provide an afterschool Chinese Cultural program for intermediate students in grades 7-8 to create global awareness and understanding of China, its people and their society.
  - b. Provide up to 15 early college credits in Hospitality and Tourism for high school students. Successful students who complete all 15 credits will receive a Certificate of Competence in Hospitality and Tourism that is recognized by the American Hotel & Lodging Educational Institute. Students may also earn a CTE Honors Diploma by successfully completing the Honors Diploma Requirements.
  - c. Conduct professional development for DOE secondary teachers, resources teachers, school counselors, and school coaches on the various operations in the hospitality and travel industry, including the business and cultural protocols of China and other Asian countries, as well as landscaping, marketing, restaurant operations, and management.
  - d. Provide job shadowing and information on the various employment opportunities at the Ko Olina Resorts for our students and adults.
  - e. Establish a partnership with Leeward Community College and/or DOE Adult Education to provide an adult education Hospitality Job Training program through which successful participants will receive a Certificate of Professional Development recognized by the American Hotel & Lodging Educational Institute.
2. Establish a Services Development Program in Creative Media for the Searider Productions Program at Waianae High School.
  - a. Provide up to 15 early college credits in Creative Media for high school students to support the Hospitality and Travel Industry.



- b. Create and pilot a Directed Study course in Creative Media for students to demonstrate what they learned through a Performance Based Assessment project.
- 3. Research and Design an Educational Enterprise (Eduprise) in mariculture production for students in the Marine Science Learning Center at Waianae High School.
  - a. Provide an opportunity for students to do research, plan and gain entrepreneurial and maricultural skills and experiences in ogo production. This first year, the focus is on setting up an ogo production program – research, planning, and designing a seed stock tank.

These objectives are in alignment with the Hawaii Department of Education’s Strategic Plan Goals for preparing students for success in college, career, and citizenship in order to build a better future for themselves, their families, and the Westside Community on the Leeward Coast.

## **II. Service Summary and Outcomes**

### **1. Scope of Work, Tasks and Responsibility**

The Searider Productions Foundation (SPF) Nanakuli-Waianae Complex Area (NWCA) Project is comprised of the following activities:

- 1. Human Resource Development for Hospitality and Tourism
  - a. Develop and implement a Chinese cultural program in partnership with After School All Stars (ASAS). This program will be infused into ASAS’ Career Exploration program and provide students in grades 7-8 opportunities to engage in global and cultural awareness, history, the arts, food, society, and an introduction to simple conversational language. The program will be offered two times a week after school with special events that may be held during the school day, weekend, or evenings. ASAS will be responsible for hiring staff for this program and will work in partnership with the NWCA staff and SPF project coordinator in the development of curriculum, programming, monitoring, and evaluation.
  - b. Offer up to 15 early college credits in Hospitality and Travel for high school students in 1) CHN197 – Chinese in the Travel Industry, 2) HOST101 – Intro to Travel Industry Management, 3) HOST152 – Front Office Operations, 4) HOST 154 – Food and Beverage Operations, and 5) MGT 121 – Customer Service. Successful students who complete all 15 credits will receive a Certificate of Competence in Hospitality and Tourism that is recognized by the American Hotel & Lodging Educational Institute. Students may also receive a CTE Honors Diploma upon successful completion of Honors requirements. Waianae High and Nanakuli High/Intermediate School currently offer dual enrollment courses with both UH West Oahu and Leeward Community College. The existing structure will allow for the schools to add the various travel management courses and give students both UH credits as well as high school credit for graduation. The instructor costs will be the same as the agreed upon costs with each higher education institution and the classes will be taught on the high school campuses. The Early College Program courses fall under the oversight of the School Principal with program implementation responsibilities held by the College and Career Counselors. Work with the Office of Curriculum, Instruction, and Student Support (OCISS) to establish a CTE Honors Diploma for students who successfully completed required

courses and a Performance Based Assessment (PBA). The SPF project coordinator and the NWCA School Renewal Specialist in charge of the College and Career Program will be responsible for the coordination, support and evaluation of these courses.

- c. Provide professional development, training, and on the job experiences that will advance and broaden DOE secondary teachers', resources teachers', school counselors', and school coaches' understanding of the various operations in the hospitality and tourism industry at Ko Olina Resorts. Training will be provided in partnership with industry professionals and UH system instructors. The purpose of the job-embedded staff development is to increase global awareness, refine existing instructional materials and strategies to incorporate 21<sup>st</sup> century skills and integrate the real world situations into the classroom. The SPF project coordinator and the NWCA School Renewal Specialist in charge of the College and Career Program will be responsible for the coordination, support and evaluation of this professional development activity.
  - d. Secure partnerships with industry for job shadowing for students and externship for teachers to understand the opportunities in the Hospitality and Travel Industry. The NWCA School Renewal Specialist in charge of the College and Career Program and the SPF project coordinator will work with the School Principals, College and Career Counselors from the high schools and the UH system to create a consistent program procedure, identify potential job shadowing and externships partners, make contact and support the implementation of the program. Data collection, monitoring and evaluation will be the responsibility of the SPF project coordinator with assistance from the School Renewal Specialist and other Complex Area Staff.
  - e. Provide the adults in the community who may be interested in future job opportunities in the hotel industry at Ko Olina Resort with the career/work skills needed. Work with Leeward Community College (LeeCC) to offer a job training program that infuses simple conversational Chinese language and culture with entry level job training. Successful participants will receive a Certificate of Professional Development recognized by the American Hotel & Lodging Educational Institute. The SPF project coordinator and UH LeeCC staff will be responsible to assist, monitor and evaluate this program.
2. Services Development Program in Creative Media for the Hospitality and Travel Industry
- a. Offer 15 early college credits in Creative Media to Waianae High Searider Productions students in 1) ART112 – Intro to Digital Art, 2) CM120 – Intro to Digital Video, 3) ART126 – Intro to 3D Art, 4) ART107 – Intro to Digital Photography, and 5) CMXXX – Directed Study in Creative Media (Performance Based Assessment). These courses will be taught with emphasis in supporting the Hospitality and Travel Industry, thereby building relevance and real world connections for the students. Waianae High School currently offers dual enrollment courses with both UH West Oahu and Leeward Community College. The existing structure will allow Waianae High to add the Creative Media courses and give students both UH credits as well as high school credits for graduation. The instructor costs will be the same as the agreed upon costs with each higher education institution and the classes will be taught on the high school campuses. The Early College Program courses fall under the oversight of the School Principal with program implementation responsibilities held by the Searider Productions Early College Coordinator. The SPF project coordinator will be responsible for the support, monitoring, and evaluation of these courses.

- b. Work with UH West Oahu to design, establish and pilot an Early College Directed Study course in Creative Media for Waianae High students to demonstrate what they learned through a Performance Based Assessment (PBA) project. Students could create PSAs, banners, flyers, photographs, and other media items requested from Ko Olina Resorts to promote and/or inform visitors of the amenities and services available on property. The instructor costs will be the same as the agreed upon costs with UH West Oahu and the classes will be taught on the high school campus. This Early College course falls under the oversight of the School Principal with program implementation responsibilities held by the Searider Productions Early College Coordinator. The SPF project coordinator will be responsible for the support, monitoring, and evaluation of this course.
3. Research, Plan, and Design an Eduprise in Mariculture Ogo Production at Waianae High School Marine Science Learning Center
    - a. Research and work with the UH College System, with the Department of Agriculture, with other state and city agencies and small businesses to plan and design an appropriate operating tank to raise ogo meeting the standards for commercial use. Basic planning and designing of an ogo production project will be the main focus for this school year. This Marine Science project falls under the general oversight of the School Principal with program implementation responsibilities held by the Marine Science Teacher. Students will use the design thinking process to develop an ogo seeding tank, improved production system and continuing to research the marketability of their product. The SPF project coordinator will be responsible for the support, monitoring and evaluation of this project.

## 2. Projected Timeline

Target Date	Action
July 2018 Aug 2018	<b>Initial Set Up of Project</b> <ul style="list-style-type: none"> <li>• Contract SPF Project Coordinator</li> <li>• Create an Advisory Committee (monthly meetings)</li> </ul>
Aug 2018–May 2019 Sept 2018–June 2019 June – July 2019	<b>Monitoring and Evaluation</b> <ul style="list-style-type: none"> <li>• Monthly meetings</li> <li>• Ongoing monitoring and reporting at Advisory Committee meetings</li> <li>• Final evaluation and write up</li> </ul>
Aug – Dec 2018 Jan – May 2019 May – June 2019	<b>Human Resource Development for Hospitality and Tourism</b> <ol style="list-style-type: none"> <li>a. Intermediate School Chinese Cultural program           <ul style="list-style-type: none"> <li>• Work with ASAS to secure instructors for the inter. school Chinese Cultural program</li> <li>• Implement inter. school Chinese Cultural program</li> <li>• Evaluate program</li> </ul> </li> </ol>
Aug – Dec 2018 Sept – Dec 2018 Jan – May 2019	<ol style="list-style-type: none"> <li>b. Hospitality and Travel Industry UH Credit Courses           <ul style="list-style-type: none"> <li>• Offer six early college credits during first semester</li> <li>• Establish CTE Honors Recognition Program</li> <li>• Offer six early college credits during second semester</li> </ul> </li> </ol>



Target Date	Action
May – July 2019  Nov – Dec 2018 Jan – Feb 2019 June 2019  Oct – Dec 2018 Jan – June 2019  Oct – Dec 2018 Jan – May 2019	<ul style="list-style-type: none"> <li>• Offer six to nine early college credits during the summer</li> </ul> <p>c. Teacher Externship Program</p> <ul style="list-style-type: none"> <li>• Plan professional development, training, job experiences</li> <li>• Recruit teachers for externship</li> <li>• Implement and evaluate externship program</li> </ul> <p>d. Partnership for job shadowing and externships</p> <ul style="list-style-type: none"> <li>• Connect &amp; coordinate job shadowing and externship</li> <li>• Implement and evaluate</li> </ul> <p>e. Hospitality and Tourism Job Training for Adults</p> <ul style="list-style-type: none"> <li>• Contract UH to teach a Hospitality Job Training program</li> <li>• Implement and evaluate the Job Training course</li> </ul>
Aug – Dec 2018 Jan – May 2019 May – July 2019  Aug – Dec 2018 Jan – June 2019	<p><b>Creative Media to Support Hospitality and Tourism Industry</b></p> <p>a. Creative Media UH Credit Courses</p> <ul style="list-style-type: none"> <li>• Offer six early college credits during first semester</li> <li>• Offer six early college credits during second semester</li> <li>• Offer three early college credits during the summer</li> </ul> <p>b. Directed Study (PBA) course in Creative Media</p> <ul style="list-style-type: none"> <li>• Design course to infuse creative media in the tourism industry</li> <li>• Implement and evaluate program</li> </ul>
Aug – Nov 2018 Dec – Mar 2019 Mar – May 2019  May-June 2019	<p><b>Eduprise in Mariculture (ogo) Farming</b></p> <p>a. Preparation of aquaculture facility for ogo farming.</p> <p>b. Research and design an artificial seed stock tank.</p> <p>c. Research the conditions conducive for optimal ogo production – salinity and temperature of water, combination of animals with ogo, length of time before harvest, etc.</p> <p>d. Project Report completed by students and Teacher</p>

### C. Quality Assurance and Evaluation Plans

1. This is the second year that SPF is requesting funds to operationalize and expand this Hospitality and Tourism Employment Pathway. The challenges that were faced the first year will be addressed through better community outreach, earlier announcement of the courses to improve the registration system. Learning from the first year, the second year will provide opportunities to expand and diversify student participation in three pathways and to improve and stabilize the implementation of the program.
2. Searider Productions Foundation (SPF) will contract a project coordinator to ensure that the identified activities are progressing on time and the goal and objectives of this project are being met. The SPF project coordinator will work with NWCA School Renewal Specialist in charge of the College and Career program to monitor the progress of the identified activities and give update reports to the advisory committee.
3. An advisory committee made up of GIA stakeholders will meet monthly to oversee the execution and implementation of the project to be sure that the goal and objectives are being met. The committee will discuss any challenges and provide alternative actions to be taken. Meeting Notes will be taken and shared with Complex Area

Superintendent, School Principals, and Searider Productions Foundation President to serve as progress reports of the project.

4. A final evaluation report will be submitted to the Legislature one month after the grant project ends.

#### **D. Measures of Effectiveness**

The measurable outcomes are as follows:

1. Final documented curriculum and assessment for the intermediate school program.
2. Information provided by the After Schools All Stars Program Staff on the number of students served and perception survey data from students.
3. Number of courses and trainings conducted for the Early College and Adult Education Hospitality and Travel Industry, teacher/staff feedback, survey data from students on courses taken, and student course grades.
4. Number of community outreach events planned and participation/attendance.
5. Number of teachers externships established and completion with evaluation reports.
6. Student career day and internship surveys and evaluations completed by the participants and business/community partners for feedback.
7. Final documented plans for a seed stock tank and proposals to support next steps for the project to be funded.

### **III. Financial**

SPF seeks \$330,000 in funding to support project implementation and expansion.

1. \$96,000 at \$8,000/course (4 courses in the fall, 4 courses in the spring, and 4 courses in the summer).
2. \$33,500 for course textbooks, materials, supplies and facility use.
3. \$6,800 for student transportation for field trips, job shadowing, and UH orientation and/or testing.
4. \$9,000 for Intermediate School Program at Waianae Intermediate and Nanakuli Intermediate Schools.
5. \$13,000 for Creative Media in the Hospitality/Travel Industry Program Development and Implementation.
6. \$65,000 for Educational Enterprise for Mariculture Ogo Production
7. \$2,700 for Community Outreach and Office Supplies and Materials.
8. \$10,000 for Adult Education Job Training Program in Hospitality/Tourism.
9. \$14,000 for Teacher Externship Program.
10. \$50,000 for Grant Coordinator.
11. \$30,000 for SPF Administrative Cost at 10%.

Total cost for this GIA project: \$330,000

SPF does not receive any state or federal tax credits nor has it applied for any tax credits pertaining to any capital projects.

SPF does not have any federal or county contracts or grants. SPF received a GIA grant of \$110,000 last year.

### **IV. Experience and Capability**

#### **A. Necessary Skills and Experience**

SPF obtained its 501(c)(3) IRS tax exemption in June of 2014. Since then, it has met regularly with the Waianae High School Principal to identify the needs of the students and



program needs for the school. The focus has been on fundraising to support scholarships, programs and other activities at the school. As the SPF board of directors are either alumni, teachers, community and business members, there is continued focus on how to provide support and implement needed programs to better prepare our students and the larger community to be productive and successful members of the global society.

## **B. Facilities**

The following facilities will be used:

- The early college courses will be held on the high school campus facilities during the school year. During the summer, the courses may be held at either or both the Leeward Community College Maili Campus and Waianae High School.
- The after school grades 7-8 program will be held at the intermediate school campus facilities.
- The Mariculture Ogo Production program will be held at Waianae High Marine Science Learning Center.
- The NWCA College and Career Specialist will work out of his office in Nanakuli Elementary School. The SPF project coordinator will work out of the Leeward District Office to be under the direct supervision of the NW Complex Area Superintendent.
- The Adult Education Course will be held at the Leeward Community College Maili Campus.
- The Teacher Externship program will be held at the Leeward Community College Maili Campus and/or the Ko Olina Resorts.

## **V. Personnel: Project Organization and Staffing**

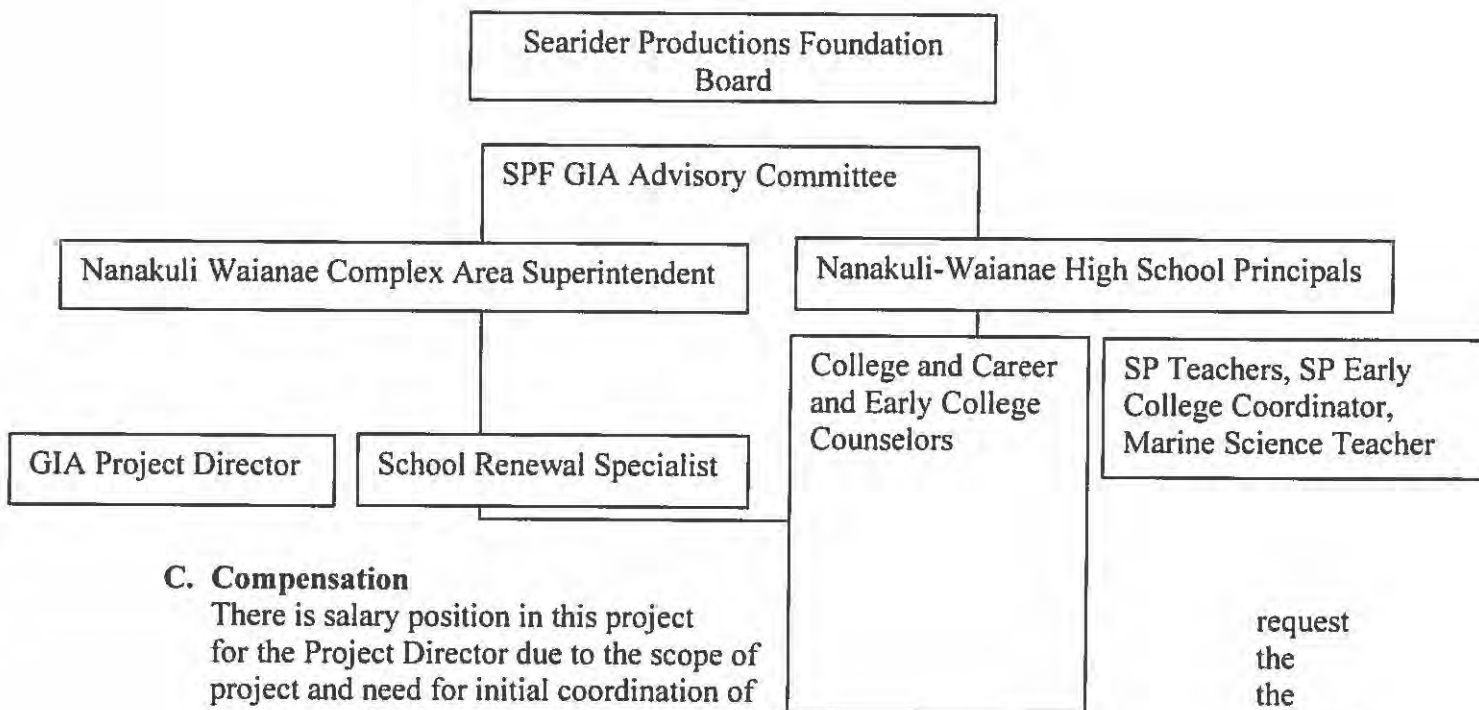
### **A. Proposed Staffing, Staff Qualifications, Supervision, and Training**

1. A Project Coordinator will be contracted to oversee the total GIA grant project and ensure that all activities are being implemented with fidelity to meet the goal and objectives of this project. The coordinator has experience coordinating both state and federal grants and was directly involved with the 21<sup>st</sup> Century Community Learning Center (CCLC) grant, Title I and Title II grants, GEAR UP grant, the UH West Oahu's Early Scholars Program and last year's GIA grant. The project coordinator will be under the direct supervision of the NW Complex Area Superintendent and will provide any training or conferencing needed to improve the skills and knowledge of the coordinator to strengthen the operations of the grant.
2. The School Renewal Specialist in charge of College and Career Program (SRS) will be responsible to coordinate and support implementation of the early college courses at the high school and with the adult community education and to support each high school in the development of the job shadowing programs. The SRS will also organize the teacher professional development program, monitor the progress, and write the reports for the early college courses and the teacher professional development program. The SRS is under the direct supervision of the NW Complex Area Superintendent. Qualifications include a bachelor's degree in Education, six years of responsible work experienced in education of which four years shall have been in teaching and two years in curriculum or program planning as appropriate.
3. The College and Career Counselors and the Seaside Productions (SP) Early College Coordinator work at the high schools and with students to set up class schedules that support transition through high school and to post-secondary education. They coordinate the Early College Program and set up the courses and instructors with each of the respective colleges for each semester. The College and Career Counselors and

the SP Early College Coordinator are supervised by their High School Principal. Qualifications include a bachelor's degree, teacher license as required by the Hawaii Teachers Standards Board and the Department of Education Office of Human Resources minimum requirements; formal or informal preparation for coordination and supervision of college and career programs; experience working with colleges and admissions offices; comfortable working independently; excellent organizational skills and follow through; excellent written and verbal communication skills; and technical ability.

4. The Marine Science Learning Center (MSLC) Teacher works at Waianae High School and with students to give them a hands-on/minds-on learning experience to instill sustainability, teamwork, entrepreneurship, and personal responsibility. In this project, the teacher will guide students in the research, planning, and designing of a seed stock tank to set up an ogo production program. The teacher will also guide students to use the design thinking process to improve the production system and to research the marketability of their product. This Marine Science teacher falls under the general oversight of the School Principal. Qualifications include a bachelor's degree, teacher license as required by the Hawaii Teachers Standards Board and the Department of Education Office of Human Resources minimum requirements; knowledge of Marine Science; comfortable working independently; excellent organizational skills and follow through; excellent written and verbal communication skills; and technical ability.

**B. Organizational Chart**



**C. Compensation**

There is salary position in this project for the Project Director due to the scope of project and need for initial coordination of structure and building of the system to capacity building and sustainability.

request the the support

**VI. Other**

**A. Litigation**

There is no pending litigation to which SPF is a party or judgment against SPF

**B. Licensure or Accreditation**

SPF is a Hawaii non-profit 501(c)(3) corporation duly organized in the State of Hawaii and registered as a charitable organization with the Department of the Attorney General, State of Hawaii.

**C. Federal and County Grants**

NA

**D. Private Educational Institutions**

NA

**E. Future Sustainability Plan**

The project is supported by SPF, the Waianae High School, Nanakuli High and Intermediate School and Waianae Intermediate School Principals, and the Nanakuli-Waianae Complex Area Superintendent. Once the program infrastructure is put in place and the partnerships developed, additional funding would be needed for the Early College Courses and the Mariculture Ogo Production. The advantage of having current personnel involved to implement the project is to build ownership and buy-in to continue the project beyond the funding cycle.

**F. Certificate of Good Standing**

Certificate of Good Standing is attached.



## BUDGET REQUEST BY SOURCE OF FUNDS

Period: July 1, 2018 to June 30, 2019

Searider Productions Foundation

Applicant: \_\_\_\_\_

BUDGET CATEGORIES	Total State Funds Requested (a)	Total Federal Funds Requested (b)	Total County Funds Requested (c)	Total Private/Other Funds Requested (d)
<b>A. PERSONNEL COST</b>				
1. Salaries				
2. Payroll Taxes & Assessments				
3. Fringe Benefits				
<b>TOTAL PERSONNEL COST</b>				
<b>B. OTHER CURRENT EXPENSES</b>				
1. Airfare, Inter-Island				
2. Insurance				
3. Lease/Rental of Equipment				
4. Lease/Rental of Space				
5. Staff Training				
6. Supplies	66,300			
7. Telecommunication				
8. Utilities				
9. College Courses	104,000			
10. Transportation/Field Trips	23,300			
11. Teacher Assistants/Contract	36,400			
12. Consultant Fees	15,000			
13. Instructors/Contract	5,000			
14. Grant Coordinator/Contract	50,000			
15. Administration Fee	30,000			
16.				
17.				
18.				
19.				
20.				
<b>TOTAL OTHER CURRENT EXPENSES</b>	<b>330,000</b>			
<b>C. EQUIPMENT PURCHASES</b>				
<b>D. MOTOR VEHICLE PURCHASES</b>				
<b>E. CAPITAL</b>				
<b>TOTAL (A+B+C+D+E)</b>	<b>330,000</b>			
<b>SOURCES OF FUNDING</b>		Budget Prepared By:		
(a) Total State Funds Requested	330,000	Colleen Murakami (808) 225-6881		
(b) Total Federal Funds Requested				Phone
(c) Total County Funds Requested				43,118
(d) Total Private/Other Funds Requested		Signature of Authorized Official		Date
<b>TOTAL BUDGET</b>	<b>330,000</b>	L. Candy Suiso, Executive Director		
		Name and Title (Please type or print)		

**GIA Budget 2018-19**

Budget	Description	Cost
<p>1. College Courses</p>	<p><b>Certificate of Competence in Hospitality and Tourism (\$56,000)</b>            HOST 152 Front Office Operations x 2 schools (\$16,000)            HOST 154 Food and Beverage Operations x 2 schools (\$16,000)  <b>Creative Media in the Hospitality/Tourism Industry at WHS (\$40,000)</b>            ART 112 Intro to Digital Art (\$8,000)            CM 120 Intro to Digital Video (\$8,000)            ART 126 – Intro to 3D Art (\$8,000)            CMXXX Directed Study Performance Based Assessment (\$8,000)  <b>Summer Session</b>            HOST 101 Introduction to Hospitality and Tourism x 1 course (\$8,000)            MGT 121 Management x 1 course (\$8,000)            CHN 197 Chinese in Hospitality Industry x 1 course (\$8,000)            ART 107 – Intro to Digital Photography (\$8,000)</p>	<p><b>\$96,000</b></p>
<p>2. College Courses Textbooks, Materials, Supplies, Facility Use Costs</p>	<p>HOST 101 – Textbooks &amp; Supplies (\$150/st. x 25 st. = \$3,750)            HOST 152 – Textbooks &amp; Supplies (\$125/st. x 35 st. = \$4,375)            HOST 154 – Textbooks &amp; Supplies (\$125/st. x 35 st. = \$4,375)            MGT 121 – Textbooks &amp; Supplies (\$175/st. x 25 st. = \$4,375)            CHN197 – Textbooks &amp; Supplies (\$100/st. x 30 st. = \$3,000)            ART 112 – Textbooks &amp; Supplies (\$25/st. x 20 st. = \$500)            CM 120 – Textbooks &amp; Supplies (\$25/st. x 20 st. = \$500)            ART 126 – Textbooks &amp; Supplies (\$50/st. x 20 st. = \$1,000)            ART 107 – Textbooks &amp; Supplies (\$50/st. x 20 st. = \$1,000)            CM XXX – Facility &amp; Equipment Rental, Supplies, Materials (\$10,625)</p>	<p><b>\$33,500</b></p>
<p>1. Student Transportation for Field Trips</p>	<p>HOST 101 – 1 Trip x \$400 = \$400            HOST 152 – 2 Sch x 1 Trip x \$400 = \$800            HOST 154 – 2 Sch x 1 Trip x \$400 = \$800            MGT 121 – 1 Trip x \$400 = \$400            CHN197 – 1 Trip x \$400 = \$400            ART 112 – 1 Trip x \$400 = \$400            CM 120 – 1 Trip x \$400 = \$400            ART 126 – 2 Trip x \$400 = \$800            ART 107 – 2 Trip x \$400 = \$800            CM XXX – 2 Trip x \$400 = \$800</p>	<p><b>\$, 6,800</b></p>
<p>1. Intermediate School Program</p>	<p><b>ASAS Career Exploration Class</b>            Instructor – 2 sch x 9 wks x 5 hr/wk x \$23/hr x 2 teachers = \$4,140            Supplies/materials – \$1,250/sch x 2 schools = \$2,500            Field Trips – 2 sch x 3 trips x \$394 = \$2,360</p>	<p><b>\$9,000</b></p>

Budget	Description	Cost
2. Creative Media in the Hospitality/Tourism Industry Program Development & Implementation	5 Teaching Assistants x \$2,600/contract = (\$13,000)	\$13,000
3. Educational Enterprise (Eduprise) for Hospitality/Travel Industry	Ogo Farming Eduprise supplies, materials, equipment, field trips, honoraria, stipends, consultant fees (\$65,000)	\$65,000
4. Community Outreach and Office Supplies/Materials	School and Community sessions for College, Career and Workforce Development, materials, supplies, refreshments, honoraria = \$2,700	\$2,700
5. Adult Education	Cost per student - \$400/student x 20 students = \$8,000 Books, teaching materials, field trip, = \$2,000	\$10,000
6. Teacher Externship	Instructors - \$5,000 Stipend for Teachers - \$200/day x 6 days x 7 teachers = \$8,400 Instructional Supplies \$600	\$14,000
7. Grant Coordinator	Contract @ \$4,167/month x 12 months = \$50,000	\$50,000
8. Administrative Fee 10%	\$300,000 x 10% = \$30,000	\$30,000
<b>TOTAL</b>		<b>\$330,000</b>





N/A

### BUDGET JUSTIFICATION - EQUIPMENT AND MOTOR VEHICLES

Period: July 1, 2018 to June 30, 2019

Applicant: \_\_\_\_\_

DESCRIPTION EQUIPMENT	NO. OF ITEMS	COST PER ITEM	TOTAL COST
			\$ -
			\$ -
			\$ -
			\$ -
			\$ -
TOTAL:			

JUSTIFICATION/COMMENTS:

DESCRIPTION OF MOTOR VEHICLE	NO. OF VEHICLES	COST PER VEHICLE	TOTAL COST
			\$ -
			\$ -
			\$ -
			\$ -
			\$ -
TOTAL:			

JUSTIFICATION/COMMENTS:

N/A

## BUDGET JUSTIFICATION - CAPITAL PROJECT DETAILS

Period: July 1, 2018 to June 30, 2019

Applicant: \_\_\_\_\_

FUNDING AMOUNT REQUESTED						
TOTAL PROJECT COST	ALL SOURCES OF FUNDS RECEIVED IN PRIOR YEARS		STATE FUNDS REQUESTED	OTHER SOURCES OF FUNDS REQUESTED	FUNDING REQUIRED IN SUCCEEDING YEARS	
	FY: 2016-2017	FY: 2017-2018	FY:2018-2019	FY:2018-2019	FY:2019-2020	FY:2020-2021
PLANS						
LAND ACQUISITION						
DESIGN						
CONSTRUCTION						
EQUIPMENT						
<b>TOTAL:</b>						
<b>JUSTIFICATION/COMMENTS:</b>						



N/A

**GOVERNMENT CONTRACTS, GRANTS, AND / OR GRANTS IN AID**

Applicant: \_\_\_\_\_

Contracts Total: -

	<b>CONTRACT DESCRIPTION</b>	<b>EFFECTIVE DATES</b>	<b>AGENCY</b>	<b>GOVERNMENT ENTITY (U.S. / State / Haw / Hon / Kau / Mau)</b>	<b>CONTRACT VALUE</b>
1					
2					
3					
4					
5					
6					
7					
8					
9					
10					
11					
12					
13					
14					
15					
16					
17					
18					
19					
20					
21					
22					
23					
24					
25					
26					
27					
28					
29					



## Department of Commerce and Consumer Affairs

### CERTIFICATE OF GOOD STANDING

I, the undersigned Director of Commerce and Consumer Affairs of the State of Hawaii, do hereby certify that

#### SEARIDER PRODUCTIONS FOUNDATION

was incorporated under the laws of Hawaii on 02/12/2013 ;  
that it is an existing nonprofit corporation; and that,  
as far as the records of this Department reveal, has complied  
with all of the provisions of the Hawaii Nonprofit Corporations  
Act, regulating domestic nonprofit corporations.



IN WITNESS WHEREOF, I have hereunto set  
my hand and affixed the seal of the  
Department of Commerce and Consumer  
Affairs, at Honolulu, Hawaii.

Dated: January 18, 2018

*Catherine P. Awat-Cole*

Director of Commerce and Consumer Affairs



**DECLARATION STATEMENT OF  
APPLICANTS FOR GRANTS PURSUANT TO  
CHAPTER 42F, HAWAII REVISIED STATUTES**

The undersigned authorized representative of the applicant certifies the following:

- 1) The applicant meets and will comply with all of the following standards for the award of grants pursuant to Section 42F-103, Hawaii Revised Statutes:
  - a) Is licensed or accredited, in accordance with federal, state, or county statutes, rules, or ordinances, to conduct the activities or provide the services for which a grant is awarded;
  - b) Complies with all applicable federal and state laws prohibiting discrimination against any person on the basis of race, color, national origin, religion, creed, sex, age, sexual orientation, or disability;
  - c) Agrees not to use state funds for entertainment or lobbying activities; and
  - d) Allows the state agency to which funds for the grant were appropriated for expenditure, legislative committees and their staff, and the auditor full access to their records, reports, files, and other related documents and information for purposes of monitoring, measuring the effectiveness, and ensuring the proper expenditure of the grant.
- 2) If the applicant is an organization, the applicant meets the following requirements pursuant to Section 42F-103, Hawaii Revised Statutes:
  - a) Is incorporated under the laws of the State; and
  - b) Has bylaws or policies that describe the manner in which the activities or services for which a grant is awarded shall be conducted or provided.
- 3) If the applicant is a non-profit organization, it meets the following requirements pursuant to Section 42F-103, Hawaii Revised Statutes:
  - a) Is determined and designated to be a non-profit organization by the Internal Revenue Service; and
  - b) Has a governing board whose members have no material conflict of interest and serve without compensation.

Pursuant to Section 42F-103, Hawaii Revised Statutes, for grants used for the acquisition of land, when the organization discontinues the activities or services on the land acquired for which the grant was awarded and disposes of the land in fee simple or by lease, the organization shall negotiate with the expending agency for a lump sum or installment repayment to the State of the amount of the grant used for the acquisition of the land.

Further, the undersigned authorized representative certifies that this statement is true and correct to the best of the applicant's knowledge.

Searider Productions Foundation

\_\_\_\_\_  
(Typed Name of Individual or Organization)

\_\_\_\_\_  
(Signature)  
L. Candy Suiso

1/18/18  
\_\_\_\_\_  
(Date)  
Executive Director

\_\_\_\_\_  
(Typed Name)

\_\_\_\_\_  
(Title)